

THEME Buildings & Businesses

"All Things Industry Related - Buildings and Businesses."

To Navigate Photos Use The "Next" and "Previous" Arrows Below



IMG04001
No Description Found.



IMG04002
No Description Found.



IMG04003
No Description Found.



IMG04004
No Description Found.

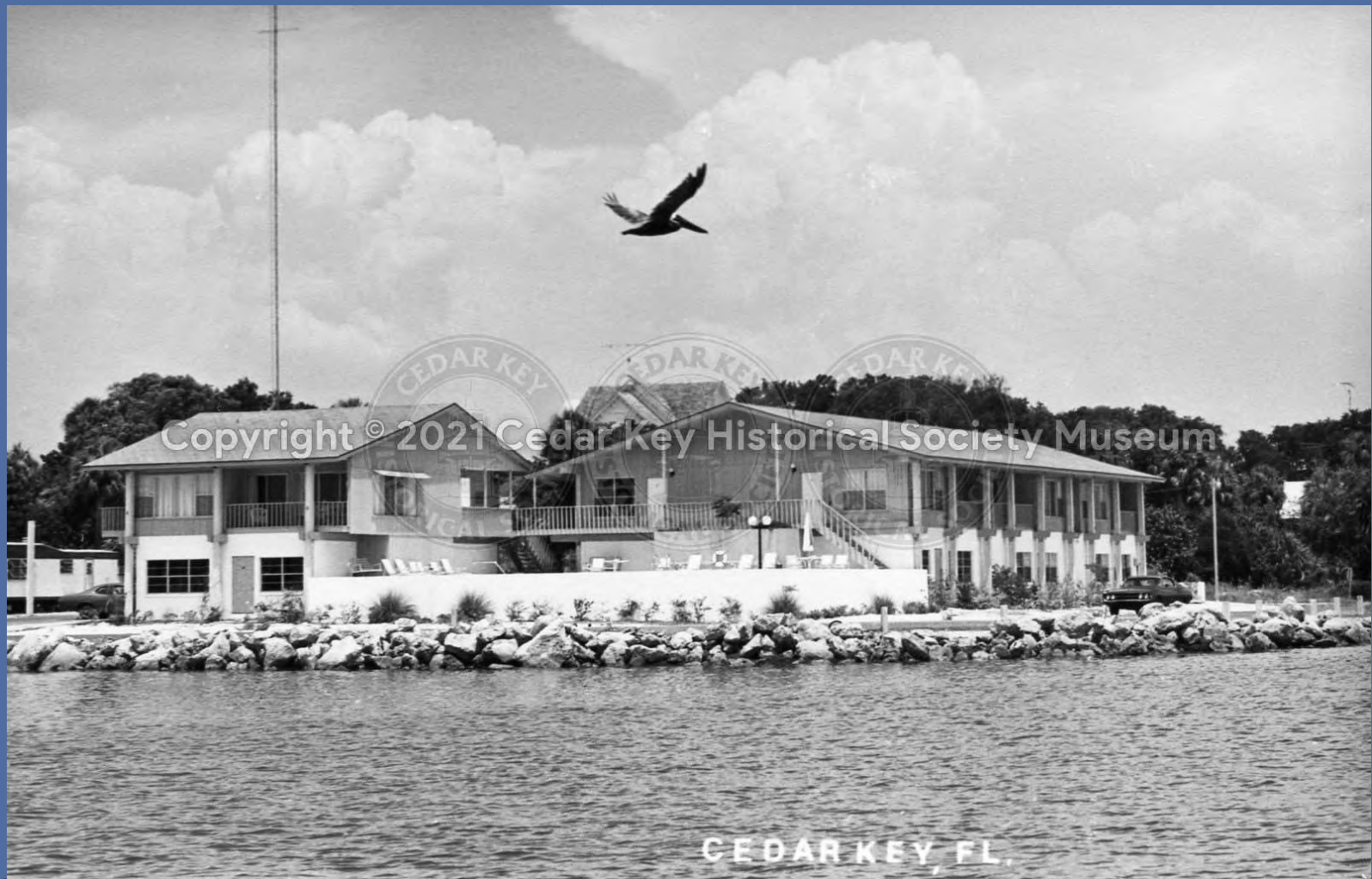


IMG04005
No Description Found.



IMG04006

Delainey's fish house, Zeigler's bait house



IMG04007
Beach Front Motel, Cedar Key FL



IMG04008
Butcher Shop



IMG04009

Cedar Inn, located on 2nd Street, Cedar Key FL



IMG04010

Cedar Key Seafood (Crab Plant) 1953-68, employed about 75 crabbers, bldg. was part of fiber factory prior to that.



THIS WHITE SPACE WAS
RENDERED DUE TO A
FORMAT ISSUE, AND IS
NOT PART OF THE
ORIGINAL PHOTO OR
DIGITAL SCAN. 527

IMG04011

Cedar Key State Bank - Cedar Key, Florida



THIS WHITE SPACE
WAS RENDERED DUE
TO A FORMAT ISSUE,
AND IS NOT PART OF
THE ORIGINAL PHOTO
OR DIGITAL SCAN.
527

IMG04012

Cedar Key State Bank (1912) Manuel Kepote (left), Sam White (right)



IMG04013

Homes along Second St., Hale Bldg. in backgrnd. prior to 1950



IMG04014

Tommy Watson, Temple Hodges Soda Fountain



IMG04015

1884 Peachline Grocery, 1894 sold for Unpaid Taxes, 1911 Frank Wadley bouth it, 1945 Wilkersons Restaurant, 1975 Pillsbury Arts

1884 WALPOLE AND ELLIS-
GENERAL MERCHANDISE
LUTTERLOH DRY GOODS,
GROCERIES.

1. MR. RICHARDS, TOWN MARSHAL

2.

3. BUTLER KING

4.

5. MR. NICHOLAS SCHLEMMER

6. MR. AUGUST SCHLEMMER

1950- DAY GROCERY STORE

1974- SALLY TILESTON, ARTS AND CRAFTS

1977- CEDAR KEY REALTY.



IMG04017
Main Street Pre-1950



IMG04018

1884 Walpole and Ellis Gen. Merch. Lutterloh Dry Goods, Groceries [1 of 2]



IMG04019
East end of 2nd St. early 1900's



THIS WHITE SPACE WAS
RENDERED DUE TO A
FORMAT ISSUE, AND IS
NOT PART OF THE
ORIGINAL PHOTO OR
DIGITAL SCAN. 527

IMG04020
Standard Oil station on big dock



IMG04021
Lutterloh Building



IMG04022

abrochure of Historical Museum bldg. when owned by Gertrude Teas 1960's

PEANUT ROASTING MACHINE-----"THE RIVAL"
MANUFACTURED BY BARTHOLOMEW CO., DES MOINES, IOWA.
PATENTED MAY 27TH, 1890.
THIS PEANUT ROASTER BELONGED TO THE SCHLEMMER
GENERAL STORE (1880-1930'S).

*Find
photo*



THE OLD SCHLEMMER STORE 2ND STREET 1998.

IMG04023
oldSchlemmer store (1880-1930's)



The Schlemmer House.

IMG04024
Schlemmer Store, ca. 1910



IMG04025

Thomas guest house, built in late 1950s



IMG04026
No Description Found.



890's Suwannee Hotel

THIS WHITE SPACE WAS
RENDERED DUE TO A
FORMAT ISSUE, AND IS
NOT PART OF THE
ORIGINAL PHOTO OR
DIGITAL SCAN. 527

IMG04027

Suwannee Hotel, built of tabby, ca. 1890s



IMC04028

Bettelinni Hotel, 1896; Schlemmer Hotel to left



IMG04029

Duden's Garage, sponge exchange in 1884

PEANUT ROASTING MACHINE-----"THE RIVAL"
MANUFACTURED BY BARTHOLOMEW CO., DES MOINES, IOWA.
PATENTED MAY 27TH, 1890.
THIS PEANUT ROASTER BELONGED TO THE SCHLEMMER
GENERAL STORE (1880-1930'S).

only - please make
copy for this
photo

find
photo

this
is first



THE OLD SCHLEMMER STORE 2ND STREET 1888

IMG04030
Schlemmer Store, 1888



THIS WHITE SPACE WAS
RENDERED USE TO A
FORMAT ISSUE, AND IS
NOT PART OF THE
ORIGINAL PHOTO OR
DIGITAL SCAN. SEE?

IMG04031

Cedar Key State Bank, early 1900s; note movie poster, Single Wives, playing across the street at the Star Theater

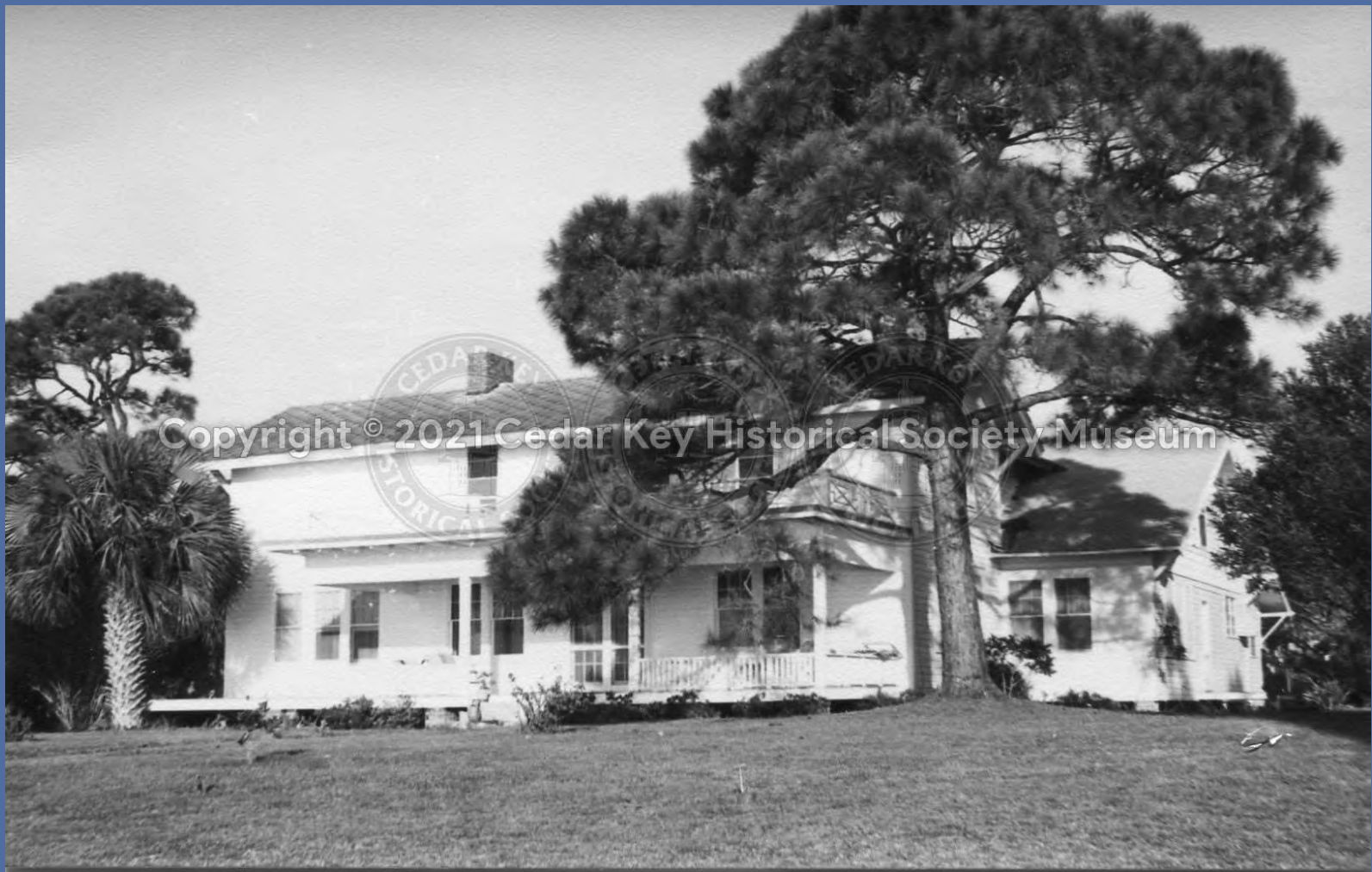


IMG04032
Women's Club, 1974

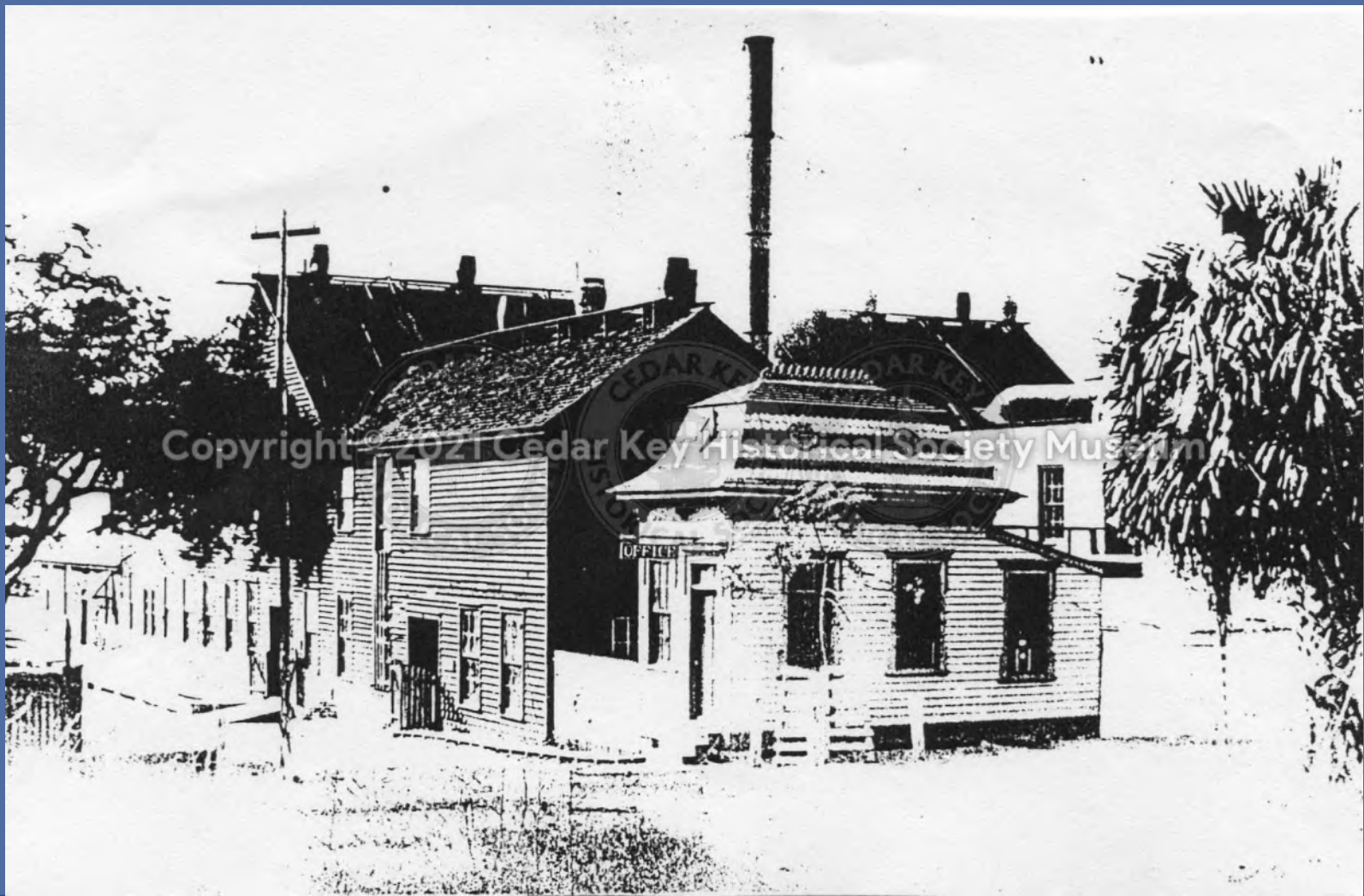


IMG04033

Located on G Street, built in early 1900s by Jim Bush



IMG04034
No Description Found.



IMG04035

Eagle Pencil Mill, telegraph pole on left



IMG04036
Hotel on Live Oak Key, 1894-95



IMG04037
Lutterloh Building 1970s



IMG04038

Richards house, George Henry Richards came to CK in 1876 and managed the Eagle Pencil Co. Mill on Goose Cove; Crevasse family lived here until it burned in 1916



IMG04039
Boothby House, perhaps



Copyright © 2021 Cedar Key Historical Society Museum

AMBROSE DRUG STORE
MAIN STREET, NORTH
SIDE, MIDDLE OF
BLOCK 12-BETWEEN B&C

IMG04040

Ambrose Drug Store, early 1900s; John Ambrose was friends with Dr. Edwin Andrews; Ambrose was from Waldo, on 2nd St., north side between B&C Sts.



IMG04041

Lutterloh, Schlemmer, Ms. Ferriday stores, L-R



IMG04042
Lillie Parrish home, 4th St.



IMG04043

Built by H.E. Charpia, early 20s, at 1st & E



IMG04044
No Description Found.



THIS WHITE SPACE WAS
RENDERED DUE TO A
FORMAT ISSUE, AND IS
NOT PART OF THE
ORIGINAL PHOTO OR
DIGITAL SCAN. 527

IMG04045

Eagle Pencil Co. Mill, site of present day, 2019, Faraway Inn



IMG04046
House at Hungry Bend



IMG04047

Formerly McCleod Store on 6th St., now apts., 1960s



IMG04048
Kirchain home, built 1900s



IMG04049

Baylor house, formerly schoolhouse, Babe Young had store before Monroe Baylor then Cason's lived here



IMG04050
Flags over CKHS Museum



IMG04051
No Description Found.



IMG04052
No Description Found.



THIS PHOTO SPACE AND
PAPERWORK NOT TO A FORMER
EXHIBIT, AND IS NOT PART OF
THE ORIGINAL PHOTO OR
DIGITAL SCAN, 521

IMG04053
Suwannee Hotel



IMG04054

Betty (Mrs.George)Andrews owned this dress shop on the east side of the Schlemmer building



IMG04055
No Description Found.



IMG04056
Cummer Cypress Co. Commissary, Sumner, 1913, D. Willard McElveen, Tommy West



N. E. Second Street, Cedar Key, Fla

LOOKING EAST - EARLY 1900'S

IMG04057

Looking east on 2nd St, early 1900s;Fowler Hotel (now Island Hotel 2019)on left;building on right now Capital City Bank (2019)



THIS WHITE SPACE WAS
RENDERED DUE TO A FORMAT
ISSUE, AND IS NOT PART
OF THE ORIGINAL PHOTO OR
DIGITAL SCAN. 527

IMG04058
Oyster Canning Factory;Ruger Oyster Cannery where Cedar Cove is now (2019);the other cannery was Mahoney Oyster
Cannery on Front Street



IMG04059
No Description Found.



IMG04060

Schlemmer Boarding House, library there now (2019); the 1896 hurricane destroyed the original hotel



THIS WHITE SPACE WAS
RENDERED DUE TO A
FORMAT ISSUE, AND IS
NOT PART OF THE
ORIGINAL PHOTO OR
DIGITAL SCAN. 527

IMG04061
2ndSt., 1967



IMG04062
Pontiac convertible, 1939 Chevy, Hudson, 1938 Chevy



IMG04063
No Description Found.



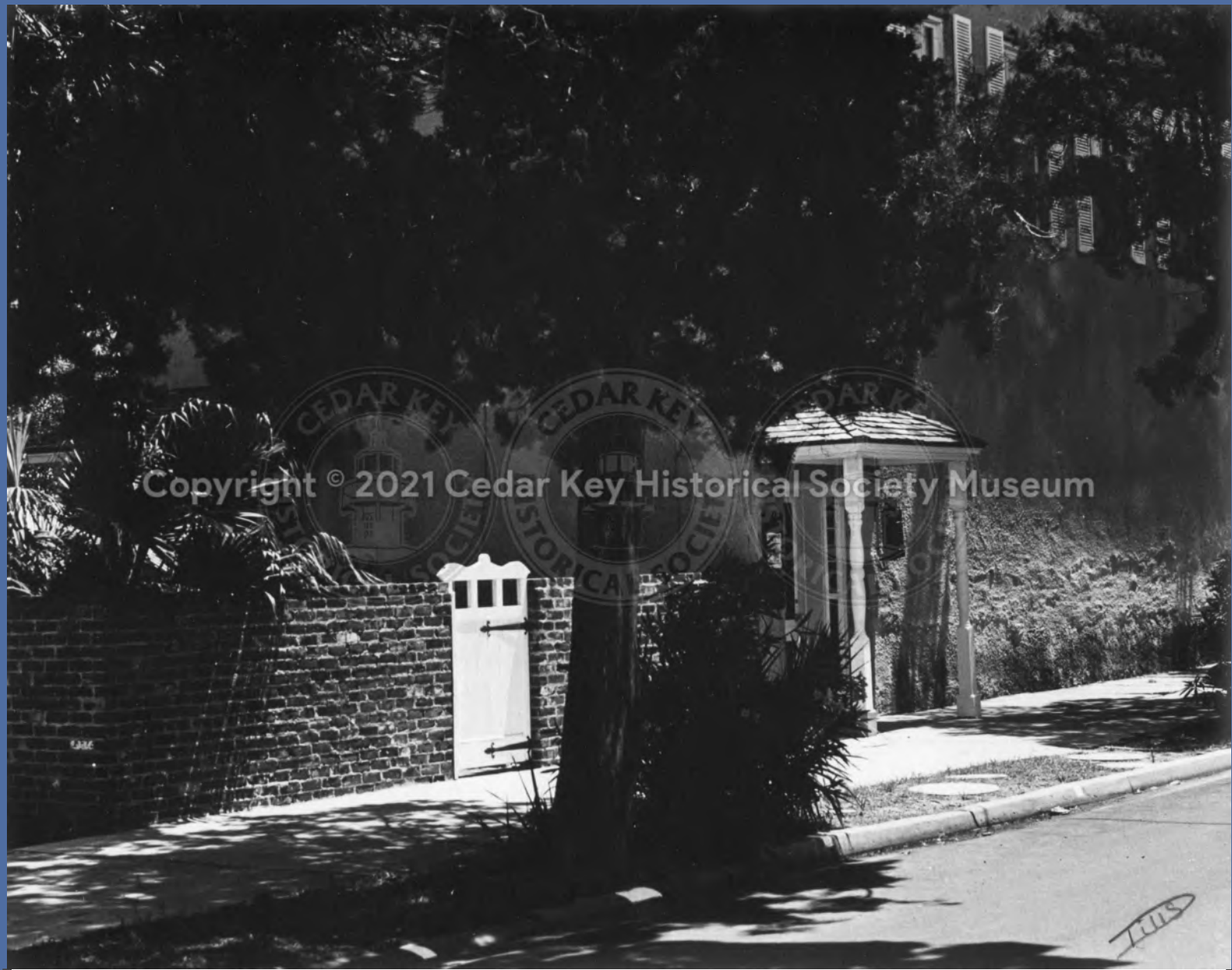
THIS WHITE SPACE
WAS RENDERED DUE
TO A FORMAT ISSUE,
AND IS NOT PART OF
THE ORIGINAL PHOTO
OR DIGITAL SCAN.
527

IMG04064

Mrs. Cooper's Shell House back of Church of Christ 1950



IMG04065
No Description Found.



IMG04066
No Description Found.



IMG04067
No Description Found.



IMG04068

Oldblock house,made of tabby,corner of G and 4th Sts. Oldest house in Cedar Key,purportedly;Indian mound to right



IMG04069

Looking at back of old block house, Indian mound in forefront, net spreads and Goose Cove in background, see
img00270



Copyright © 2021 Cedar Key Historical Society Museum

Cedar Key
Indian Mound

IMG04070

Old block house, corner of G & 4th Sts., made of tabby. Indian mound to left, house used as chicken coop by Sidney Padgett



IMG04071

Business section, Cedar Key; Schlemmer Boarding House on left, Schlemmer Store on right; boarding house (library there now 2019, fire station in the 1940s) was originally the Schlemmer Hotel



THIS WHITE SPACE WAS
RENDERED DUE TO A
FORMAT ISSUE, AND IS
NOT PART OF THE
ORIGINAL PHOTO OR
DIGITAL SCAN. 527

IMG04072
Butler King on right



IMG04073
Butler King on left



IMG04074
Frog's Landing



IMG04075
Helen's Place



IMG04076

Lumber mill where Faraway Inn is now, 2019



New train depot on East end of town

IMG04077

Newtrain depot on east end of Cedar Key



W. B. Ellis' Restaurant.

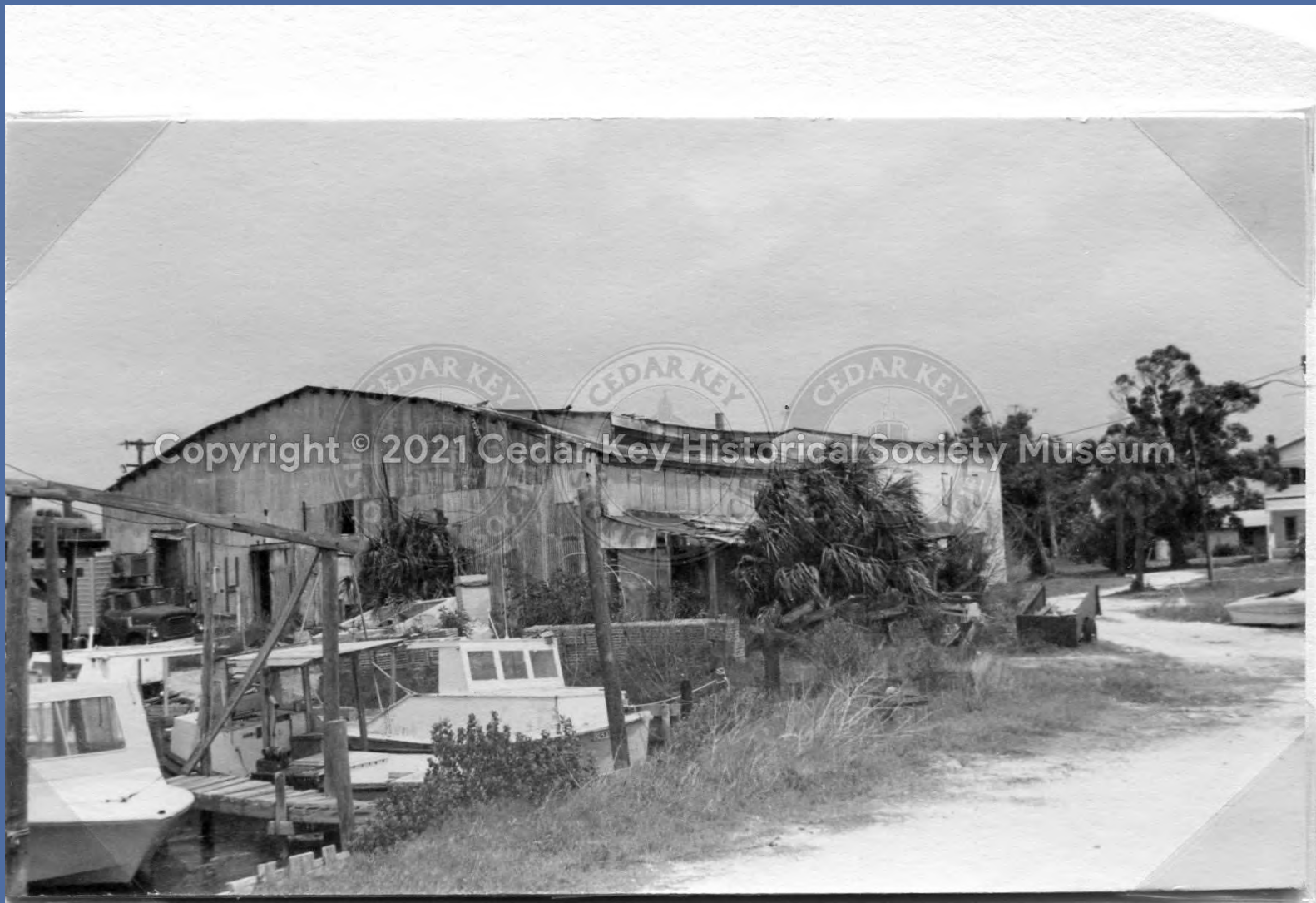
IMG04078

W.B. Ellis's Restaurant, Island Hotel far right, many owners, uses; barber shop, liquor store, 1884 J.S. Bodiford
Drugs, Mitchell Restaurant, McNulty's lived above Bodiford



IMG04079

Oyster plant then ice and power plant in 1921, remains after 1950 hurricane; site of Cedar Cove, 2019



IMG04080

See IMG04079; Randolph Hodges built it, Dr. Edwin Andrews raised money to build the power plant



IMG04081

Annie's Place now run,2019,by Annie Sheffield's granddaughter,Glenda;Boaz Wadley had bar here,1932;Maude Bryant,1947;'54-'68 Annie Sheffield Spiear grocery,restauration



IMG04082

2nd St. 1940s, L-R, McNulty Bldg., L&M, barber shop, Merle Richburg's Sundries, movie theater



IMG04083

McNulty building on NW corner across from Island Hotel



IMG04084

Markham's Store 1912, corner of 2nd&D, Markham in picture, Pelican Realty 2019



IMG04085

This is 2 different pictures;Schlemmer Store on bottom, Schlemmer Hotel on top



IMG04086

2ndSt. 1896,bridge from Schlemmer Hotel on right to Schlemmer Store on left



IMG04087

City Hall building moved from behind Sclemmer Store where it had been a bakery; numerous historic uses



IMG04088

Cedar Key State Bank established 1912



IMG04089
Cedar Key Depot, photo taken 2000



IMG04090

Markham Market 1924, east of Sclemmer's, Leslie Parham is behind counter



IMG04091

Markham's Market 1914, southside 2nd St., east of Bonish's 2019



IMG04092

Bickles-Cook home, Sandora's gallery in 1980s, Tony's, 2019, on left



THIS WHITE SPACE WAS
RENDERED DUE TO A
FORMAT ISSUE, AND IS
NOT PART OF THE
ORIGINAL PHOTO OR
DIGITAL SCAN. 527

IMG04093

diagonally across from post office,2019,originally on other side of street,what is the front was the back



THIS WHITE SPACE WAS
RENDERED DUE TO A FORMAT
ISSUE, AND IS NOT PART OF
THE ORIGINAL PHOTO OR
DIGITAL SCAN. 527

IMG04094
jail after 1950 hurricane



CEDAR KEY JAIL IN 1951.
1ST METHODIST CHURCH IS
THE WHITE BUILDING IN
THE BACKGROUND. 3RD STREET.

IMG04095

Cedar Key jail in 1951, Methodist Church in background



IMG04096

Alex and Leah Crevasse Kepote ca. 1915; Alex & Manuel Kepote Drug Store next to Drummond State bank, 2019; Leah & Alex, 2 children ret'd to Greece, he came back, she didn't



IMG04097

North side of 2nd St. looking east, Key Theater at left to the corner of 2nd & B streets; Tony's there now 2019



IMG04098
ca.'20s-'30s



IMG04099
No Description Found.

Copyright © 2021 Cedar Key Historical Society Museum



IMG04100

1960s, Brown's Seafood, Henry Brown & Herbert Coulter



IMG04101

Holman's Grocery, now, 2019, pizza place next to marina; Herbert Holman worked at US State Dept. museum docent, married Wilma Coburn Wilkerson



IMG04102

TomCat's (Rufus Collins), next to Key Motel, 2019



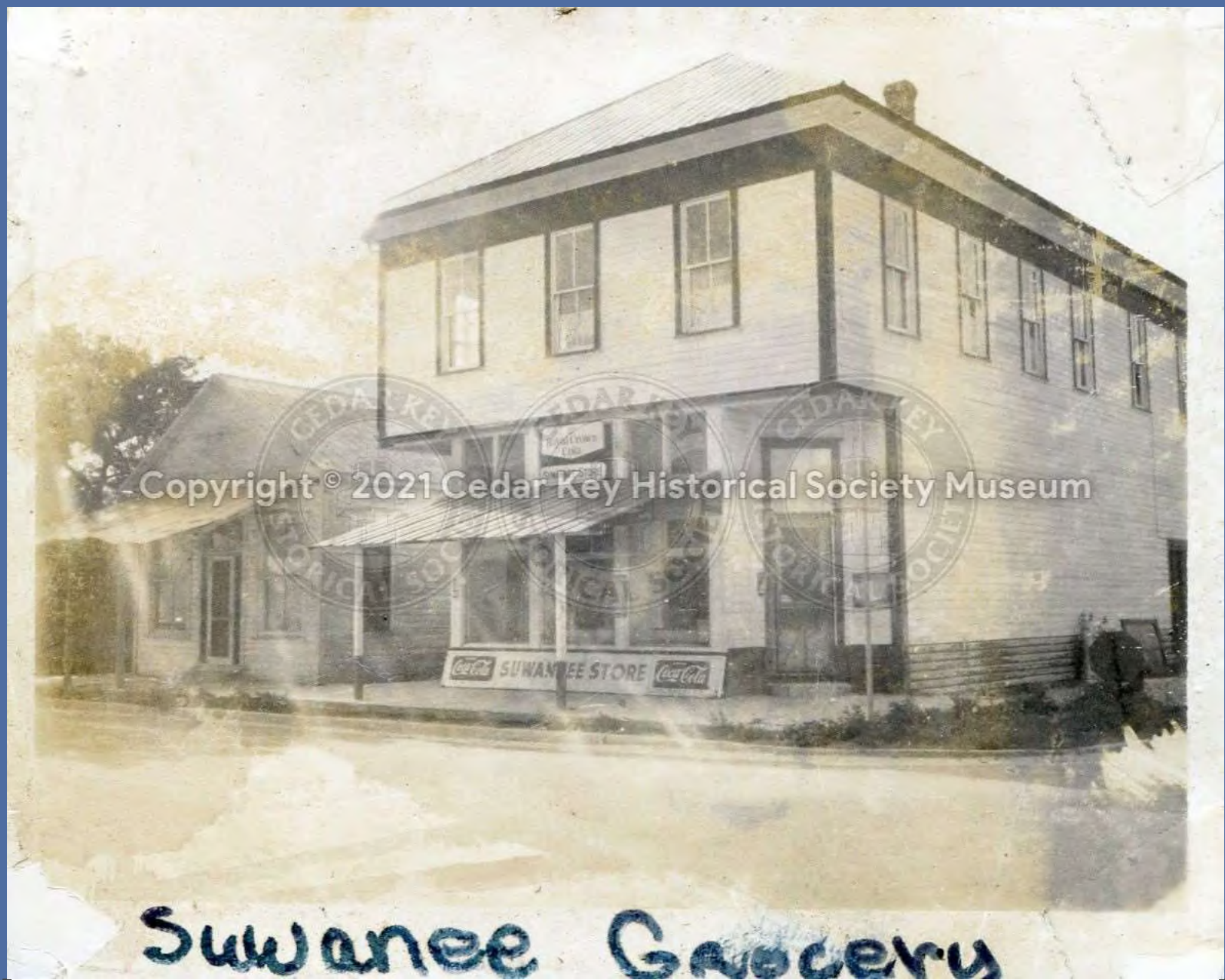
IMG04103
Cedar Key State Bank ca.60s-70s



Copyright © 2021 Cedar Key Historical Society Museum

IMG04104

cornerstone dated 1910 for Masonic Lodge is the step into the Suwanee Country Store now 1842 Coffee in 2019



Suwannee Grocery

IMG04105

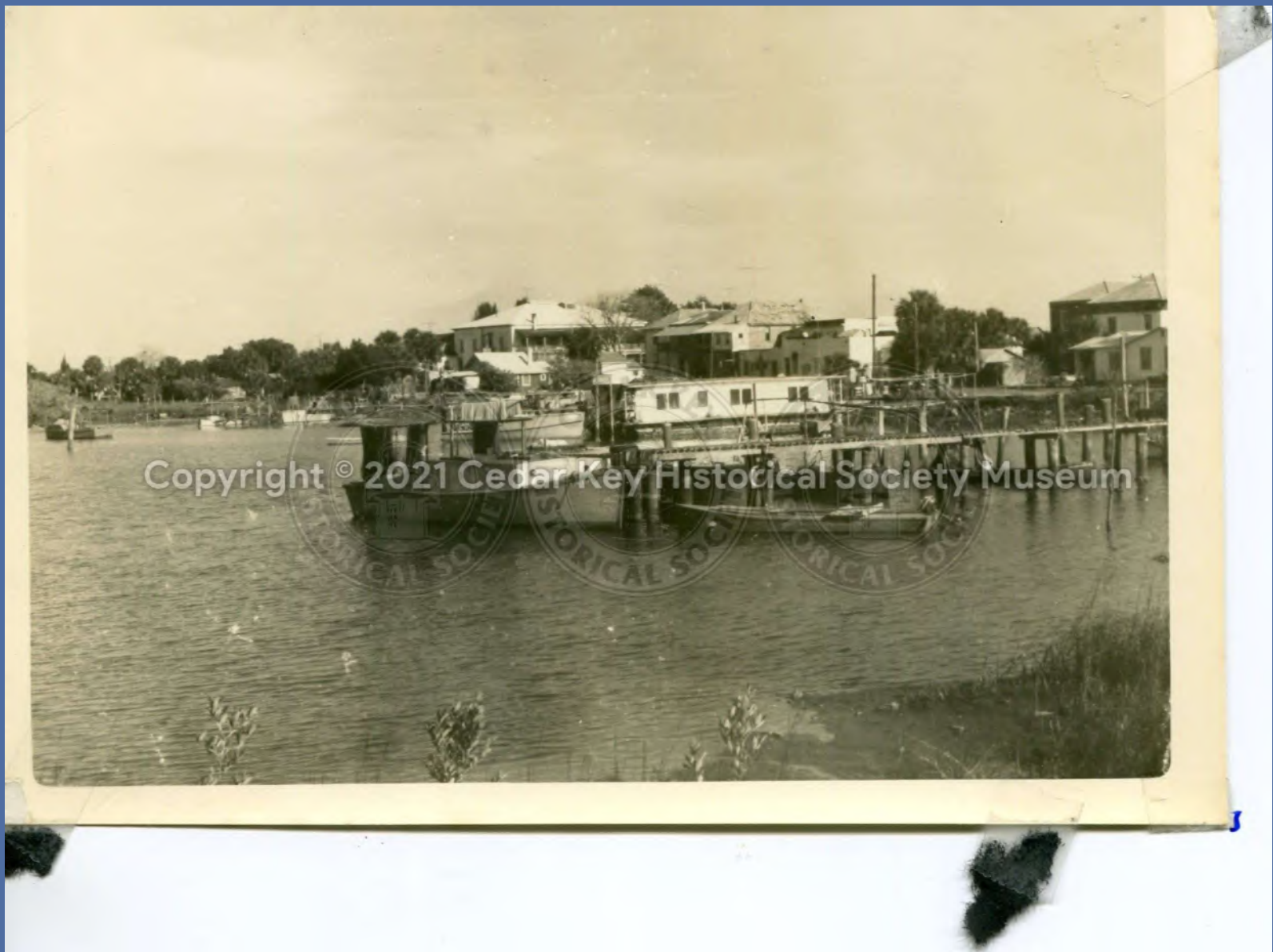
Suwannee Country Store now 1842 Coffee



THIS WHITE SPACE WAS RENDERED
DUE TO A FORMAT ISSUE, AND IS
NOT PART OF THE ORIGINAL PHOTO
OR DIGITAL SCAN. 527

IMG04106

Site of Fowlerwood Land Company, Suwanee Country Store, Masonic Lodge, SE corner of 2nd & D, now 1842 Coffee



IMG04107
No Description Found.

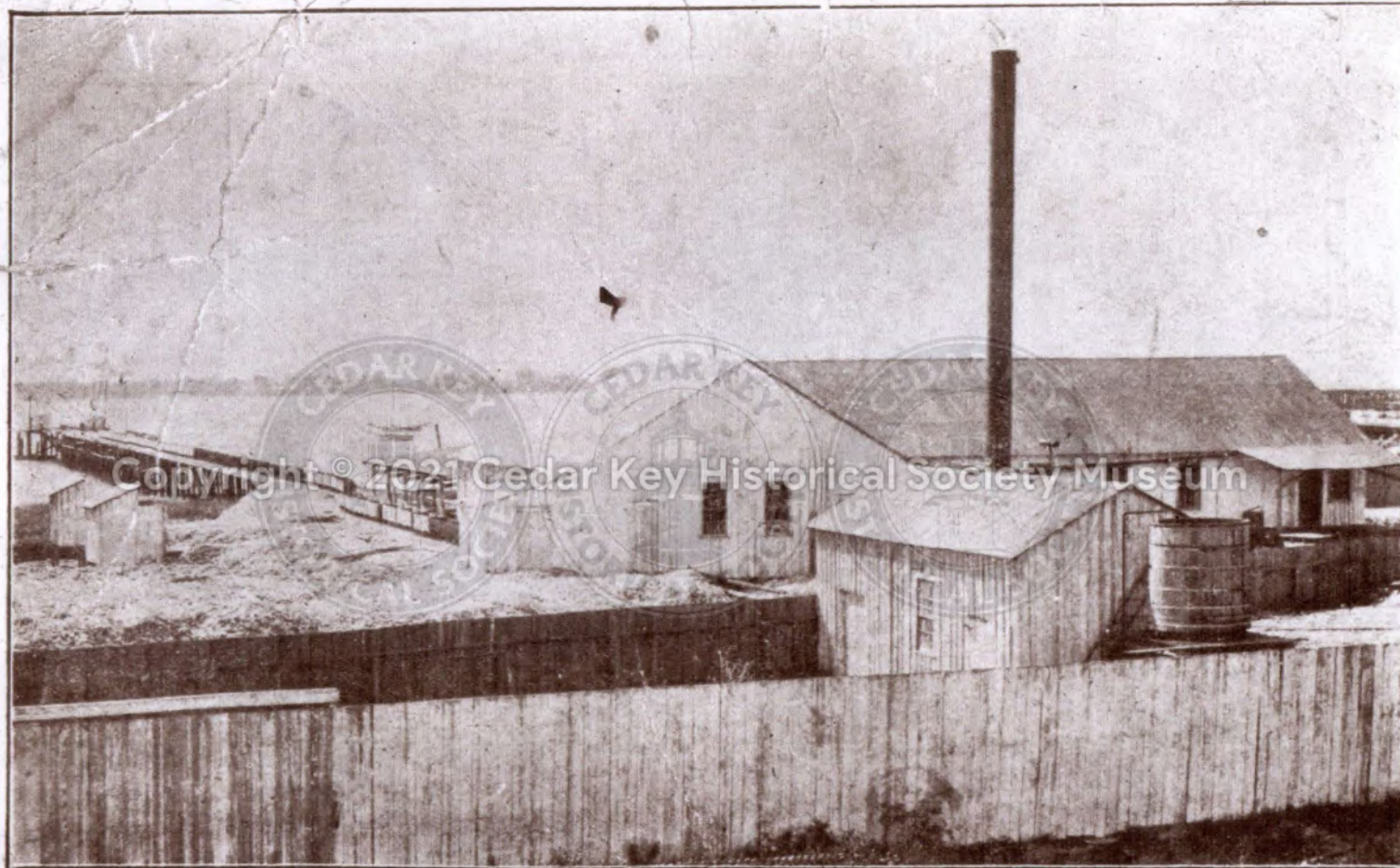


IMG04108

Icehouse only building left after fires and storms; Dottie Tileston owned it in the 60s



IMG04109
No Description Found.



OYSTER FACTORY, CEDAR KEY, FLA.

IMG04110

Ruge Oyster Factory now site of Cedar Cove, 2019



Copyright © 2021 Cedar Key Historical Society Museum

IMG04111

Lutterloh house 1880s, White house in background



IMG04112
2ndSt. looking east, 1960s



IMC04113

Schlemmer Rooming House, 1940s, and site of Schlemmer Hotel, now the fire department, 2019



IMG04114

Suwannee Grocery Store and Masonic Lodge, now 1842 Coffee, 2019, on right, Hale Building on left, now
Tongs, 2019, intersection of 2nd & D



IMG04115

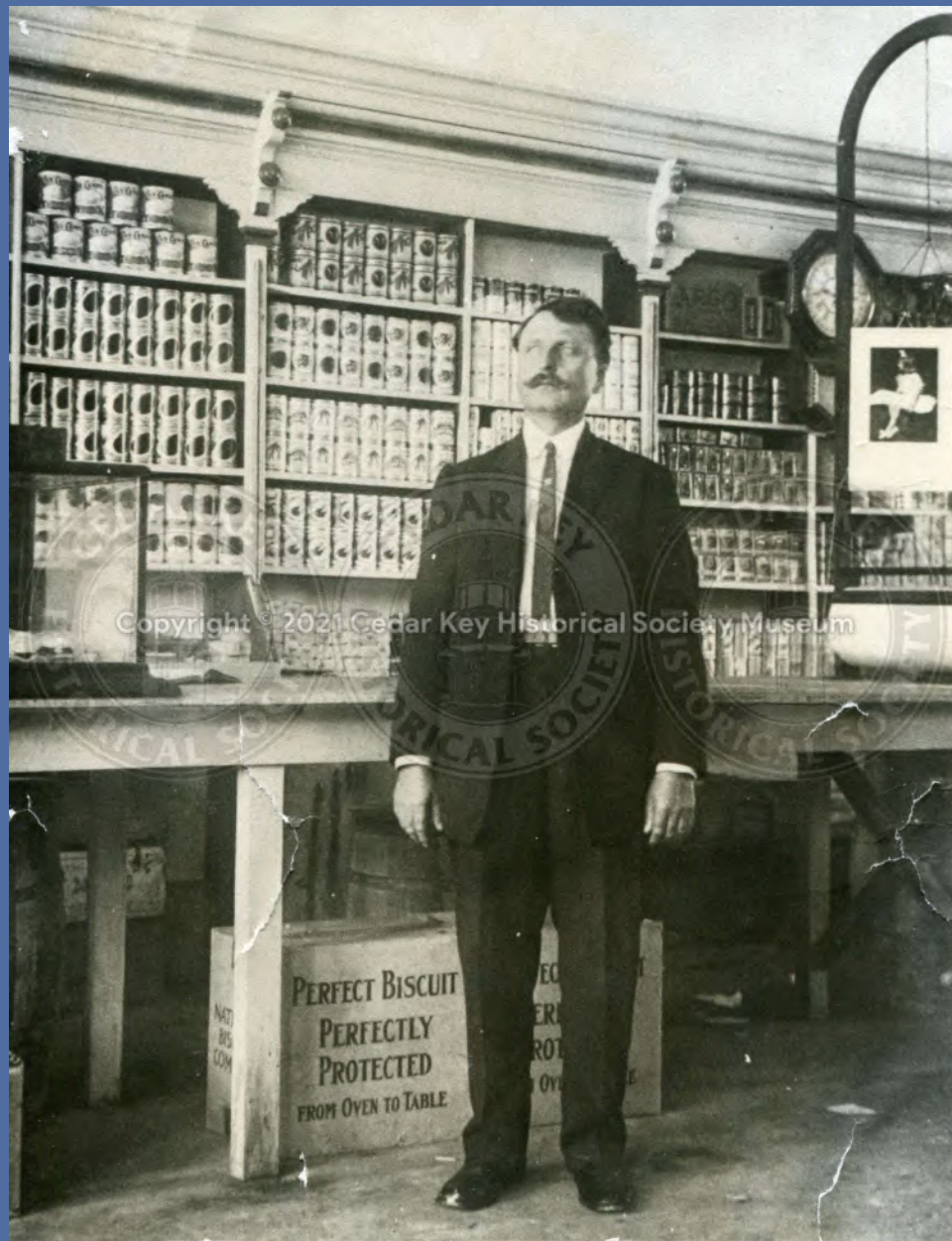
seated L-R, Bessie Gibbs, Clyde & Ruth Coulter, Island Hotel bar, 1950s



IMG04116
Island Hotel Dining Room 1950s



IMG04117
No Description Found.



THIS WHITE SPACE
WAS RENDERED DUE
TO A FORMAT ISSUE,
AND IS NOT PART OF
THE ORIGINAL PHOTO
OR DIGITAL SCAN.
527

IMG04118

August Schlemmer in his store or is it Mr. Markham in his store, see img00960



IMG04119

1912 store at corner of 2nd & D, is it Suwanee Country Store, see img00959



IMG04120
L-R, Butler King, Mr. Lutterloh

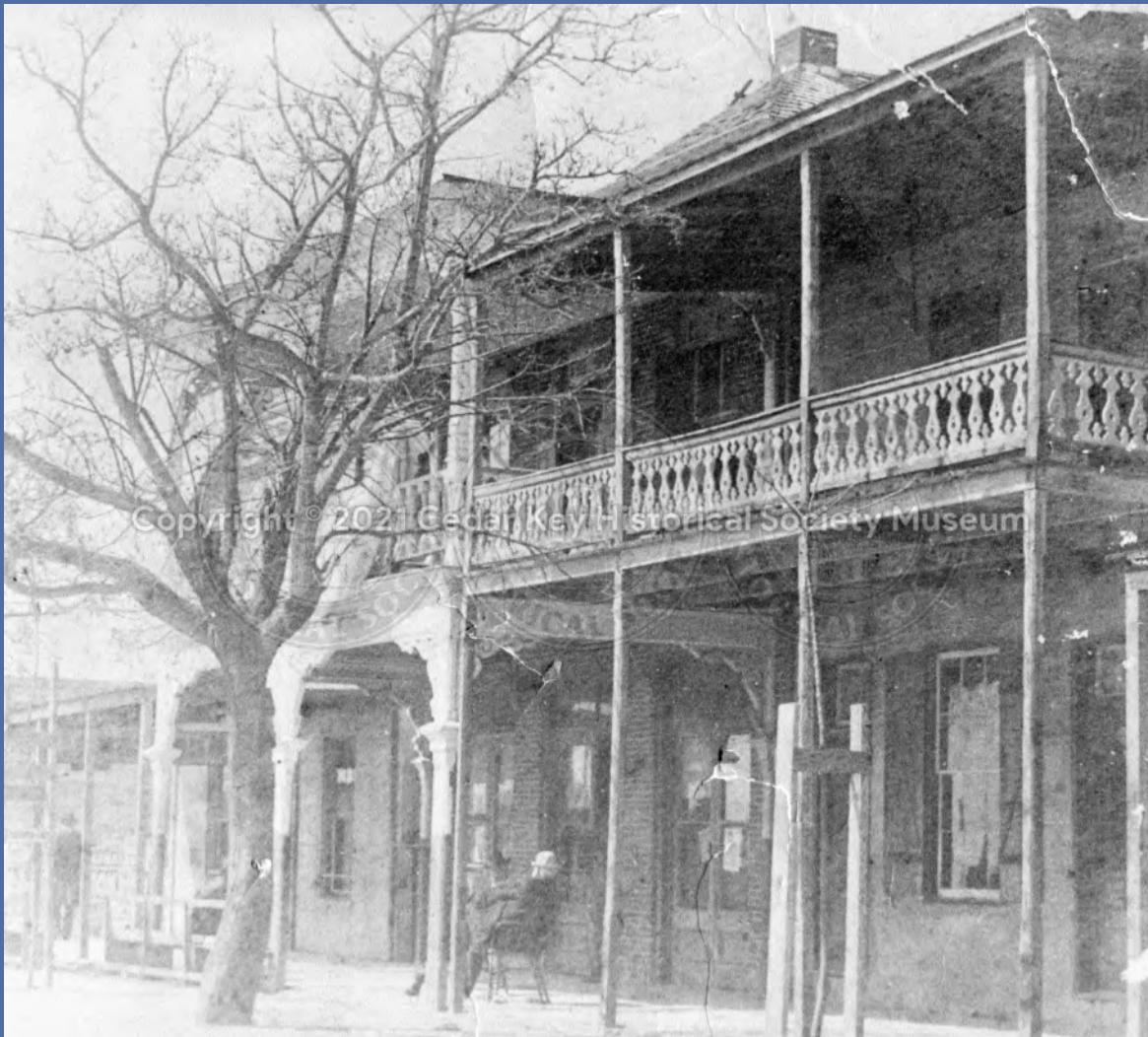


IMG04121
Post Office



IMG04122

1960s Prescott building moved from across the street formerly Hudson's Grocery



THIS WHITE SPACE
WAS RENDERED DUE
TO A FORMAT ISSUE,
AND IS NOT PART OF
THE ORIGINAL PHOTO
OR DIGITAL SCAN.
527

IMG04123
No Description Found.



IMG04124

Captain's Table, Ray & Helen Brown's, Atsena Otia in background



IMG04125
Faraway Inn on site of Eagle Cedar Mill



IMG04126
2ndSt. streets paved in 1929



IMG04127

Restaurant first Henry Brown, Madge Johnson, Joyce Wadley, now Carlin's 2018



IMG04128
Bettelini Hotel, est. 1878



IMG04129

Mahoney Oyster Plant, later Reed's Fiber Mill, located on Front (1st) St., the sides were removed later and it became a skating rink



IMG04130
Beach Front Motel on west end of island

Copyright © 2021 Cedar Key Historical Society Museum



IMG04131

1884 Walpole and Ellis General Merchandise, Lutterloh Dry Goods, Groceries; l-r, Mr. Richards, town marshal, 2., 3. Butler King, 4., 5. Nicholas Schlemmer, 6. August Schlemmer



Copyright © 2021 Cedar Key Historical Society Museum

EAGLE PENCIL FACTORY SUPERINTENDENT'S RESIDENCE

32

IMG04132

Eagle Pencil Factory Superintendent's residence, later rooming house, B.C. Wadley family home, now (2019) Bed & Breakfast



THIS WHITE SPACE WAS
RENDERED DUE TO A FORMAT
ISSUE, AND IS NOT PART OF
THE ORIGINAL PHOTO OR
DIGITAL SCAN. 527

IMG04133

Cedar Key State Bank now Drummond Bank 2019



THIS WHITE SPACE WAS
RENDERED DUE TO A FORMAT
ISSUE, AND IS NOT PART OF
THE ORIGINAL PHOTO OR
DIGITAL SCAN. 527

IMG04134
Cedar Key State Bank 1951



IMG04135

Lutterloh building far left, Hale building, Bickel Building, ca. 1930s



IMG04136

2nd, Main St., looking east, white building on right background is Jules Hodges store, ca. 1890s



IMG04137

Schlemmer Hotel on left(Pelican Realty,2021),Bettelini Hotel(estb.1878),1896



IMG04138

Schlemmer building on left(Pelican Realty,2021)building on right destroyed in 1896



IMG04139

Standard Manufacturing Company, fiber factory



IMG04140
Fiber Factory, buildings identified



IMG04141

Schlemmer building (white), Second Street, ca. 1920, note bull behind tree, UMC cartridges



IMG04142

Lutterloh building on left, Bryce house in background, ca.1890s



IMG04143

Lutterloh building in foreground, ca. 1890s, now Historical Society Museum



IMG04144

Schlemmer building,store downstairs,family lived upstairs,Schlemmer bakery in back,city hall was built from the remains of the bakery which was destroyed in storm of 1896



IMG04145

Betty Andrews' dress shop, ca. 1940s, Maddie Andrews ran it after Betty died



IMG04146

Polly Pillsbury's place, 1970s, now Bonish's (2021), Frank Wadley had a grocery and shoe repair business here in 1911



IMG04147

J.B.Lutterlohs general store across from city hall,ca.1890s;Joseph Day later had a store here and lived upstairs;his brother built the Historical Society building



IMG04148

Cedar Key State Bank(now Drummond's),1960s



IMG04149

Lutterloh and Schlemmer buildings and what was Trawick's drug store(art center,2021)

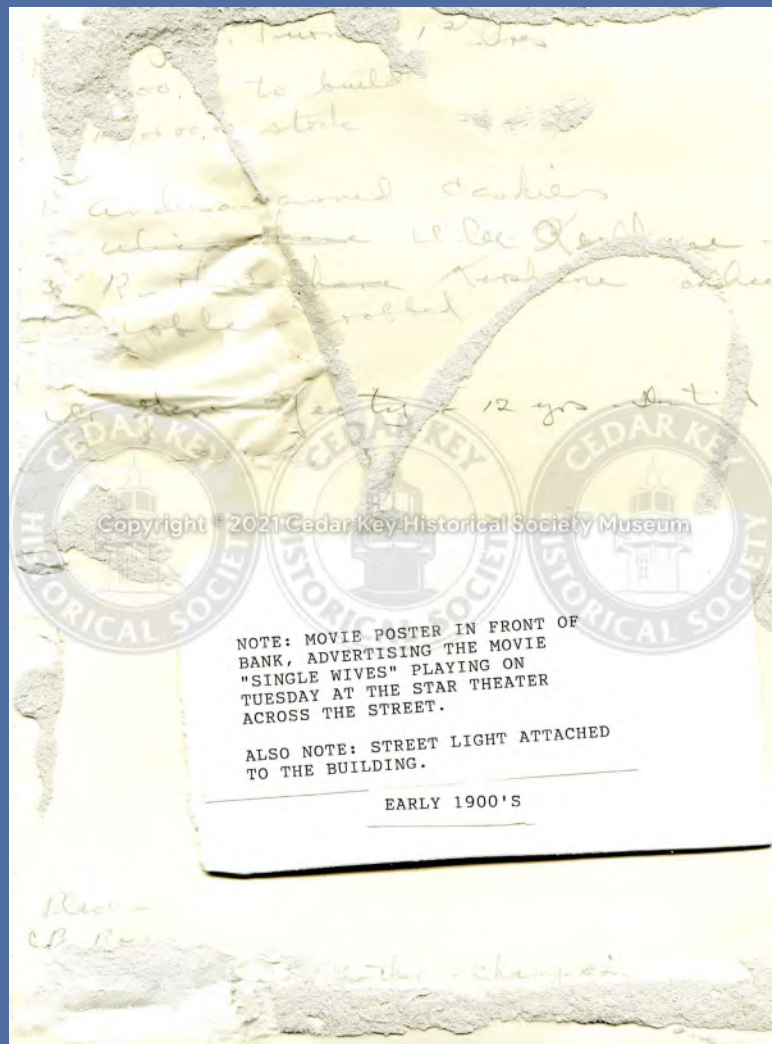


IMG04150
No Description Found.



THIS WHITE SPACE WAS
RENDERED DUE TO A
FORMAT ISSUE, AND IS
NOT PART OF THE
ORIGINAL PHOTO OR
DIGITAL SCAN. 527

IMG04151
Schlemmer Store, 1888



THIS WHITE SPACE WAS RENDERED
DUE TO A FORMAT ISSUE, AND IS
NOT PART OF THE ORIGINAL
PHOTO OR DIGITAL SCAN. 527

IMG04152
No Description Found.



IMG04153
No Description Found.



IMG04154
No Description Found.



IMG04155
No Description Found.

Photographic Records Number CK0230
Please attach Photographic Print

Copyright © 2021 Cedar Key Historical Society Museum



IMG04156
Hale Bldg. as Heron Restaurant



AMBROSE DRUG STORE
MAIN STREET, NORTH
SIDE, MIDDLE OF
BLOCK 12-BETWEEN B&C

IMG04157
J.P

Deep Sea Boats &
Guides Available

Fishing & Hunting
Paradise

JOYNER'S MOTEL

Copyright © 2021 Cedar Key Historical Society Museum

Owned & Operated by Mr. & Mrs. R. E. Joyner

Cedar Key, Florida

Air Cooled or Air Conditioned
With or Without Cooking Units

P. O. Box 948
Phone 3051

IMG04158

Joyner's Motel Cedar Key Florida 1962 (1)



IMG04159
Joyner's Motel Cedar Key Florida 1962 (2)



THIS WHITE SPACE WAS
RENDERED DUE TO A FORMAT
ISSUE, AND IS NOT PART OF
THE ORIGINAL PHOTO OR
DIGITAL SCAN. 527

IMG04160
Joyner's Motel Cedar Key Florida 1962 (3)

CEDAR KEY, FL.



IMG04161

Looking East across the Cedar Key Beach



IMG04162

Looking North on 2nd Street - Building on left became the Heron Restaurant in 1980's



IMG04163

Mr Markham in his store 1912 - Corner of 2nd and D Street



IMG04164
Railroad



IMG04165

Side Entrance to DR Coupes office - Building was 1884 J O Andrews Ladies and Gents Clothing



Copyright © 2021 Cedar Key Historical Society Museum

THE OSPREY

The Osprey welcomes you to enjoy Waterfront Efficiencies directly on the water at Cedar Key. All of our units are ground level and have two rooms, which can sleep 4 people. All have private front and back doors, the back door opening to great views of the Cedar Key Bay and fishing channels. There is plenty of space for boats and trailers.

All units have fully equipped kitchens, Cable television and telephones. We also have a private dock, with spectacular views of sunsets and sunrises. We offer fish cleaning facilities, picnic tables, a cooking grill and bicycles for exploring.

We also offer 2 prime waterfront RV parking spaces with water, cable TV and electrical hook-up.

NEW MARCH 1994

ROOMS AND RATES

RESERVE: 800-890-8327
543-9743

OWNER: Aubrey & Margaret McKneely

LOCATION: P.O. Box 306
Highway 24
Gulfside

RATES: \$44-\$60

FACILITIES: Cable TV, Bicycles,
Picnic tables and grills.

LIMITED: Pets (Please enquire)

PAYMENT: Visa, MasterCard, Cash, Check

CANCELLATION: 48 hours notice

THIS WHITE SPACE WAS
REMOVED DUE TO A
FORMAT ISSUE, AND IS
NOT PART OF THE
ORIGINAL PHOTO OR
TEXT.

IMG04166
The Osprey-March 1994



IMG04167

Walraths Store, site of Brown frame house owned by Fannie and Walter Duden Between Dudens and corner was the Reddicks Grocery - Currently Cedar Key Market

