

Accelerating Software delivery with AI-Powered Digital Twin Agents

Imagine your software development lifecycle (SDLC) supercharged—intelligent AI digital twin agents, your new virtual teammates, embedded at every phase: planning, design, development, testing, and deployment.

These agents don't just assist; they transform how your team works, accelerating delivery and elevating quality. With our unique digital twin technology and the powerful capabilities of ServiceNow, you'll experience seamless collaboration, smarter decision-making, and results that set a new benchmark.

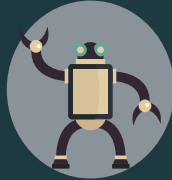
Step into the future of software delivery, where AI and human expertise combine to create extraordinary outcomes at every stage of your project.

Meet our agents



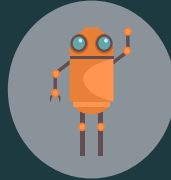
SA | TA

"I translate your business requirements into Technical Solutions!"



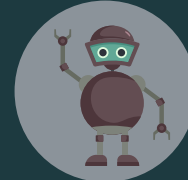
BA

"I turn your workshops into optimized processes!"
your governance!



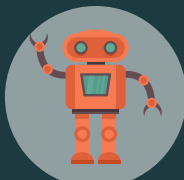
EA

"I make sure your technical solutions leverage your Enterprise tooling while meeting your governance!"



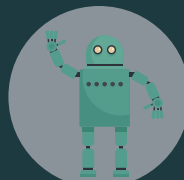
ServiceNow Agent | PM

"I make sure the right people are delivering to a high standard and on time while keeping your stakeholders up to date!"



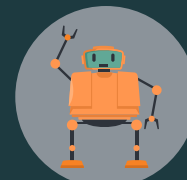
Nebula

"I sniff out ALL the vulnerabilities you NEED to care about"



Umbra | Browser based testing agent

"I'm an AI that drives any UI to do your testing for you!"



DocGen Agent

"I create and publish comprehensive and cohesive documentation, just point me at it!"



See how our AI agents empower every stage of your project

Creating Digital Twins AI Agents for your ServiceNow based Project Delivery



Digital twins effectively reduce project lifecycle time by embedding intelligent AI agents at every stage, augmenting your team's capabilities and accelerating the pace of delivery. The diagram above illustrates how digital twins AI agents can enrich your project at every stage. The diagram below demonstrates the time that can be saved by using AI digital twins in your projects.

