

THE PLAIN DEALER

Official Publication of the Plain Ol' A's

Mailing address: Plain Ol A's, P O Box 860782, Shawnee, KS 66286-0782

August 2025

The Club meets
the 4th Monday at 7:00 p.m
Tomahawk Ridge Community Center

Next Meeting
Monday
August 25, 2025

www.plainolas.com

President's Message

Happy August

I hope everyone is doing well. Well we had our first meeting back at Tomahawk Ridge Community Center and we are using a new room there with better room and amenities. Everyone seemed to enjoy it. We will continue meeting there the remainder of the year and look for something different if needed after the first of the year.

Hope to see everyone at the next meeting until then happy motoring.

Your president

Andrew Dugan

Sunday	Monday	Tuesday	Wednesday	Thursday	Friday	Saturday
August 2025					1	2
3	4	5	6	7	8 ★ NEWSLETTER DEADLINE	9
10	11	12	13	14	15 🚗	16
17	18	19	20 🚗	21	22	23 🚗
24	25 🚗	26	27	28	29	30
31						

Sunday	Monday	Tuesday	Wednesday	Thursday	Friday	Saturday
September 2025						
	1	2	3	4	5	6
7	8 ★ NEWSLETTER DEADLINE	9	10	11	12	13 🚗
14	15	16	17	18	19	20
21	22 🚗	23	24	25	26	27
28	29	30				



2025 Club Officers

President	Andrew Dugan	816-548-7436	andug125@gmail.com
Vice President	Steve Woerdehoff	913-449-2229	steves_skiing@yahoo.com
Treasurer	Bob Hess	816-668-3902	roberthess30@gmail.com
Secretary	Nancy Hess	816-679-9051	nancy12731@gmail.com
Director	Ed Jankowski	402-676-6951	emjank1626@gmail.com
Director	Ken Coleman	913-631-2752	kcoleman555@gmail.com
Director	John Smeltzer	913-638-7032	js5200ks@gmail.com

Committee Chairpersons - 2025

Calling	Ken Coleman	913-631-2752	kcoleman555@gmail.com
Ladies Night Out	Ken Coleman	913-631-2752	kcoleman555@gmail.com
Membership	John Smeltzer	913-638-7032	js5200ks@gmail.com
Newsletter	Joyce Tweedy	816-410-4613	jtweedy@swansonbernard.com
Restorer Articles	Ron and Theresa Guenther	913-682-2545	ronsaresto@yahoo.com
Seminars	Bob Hess	816-668-3902	roberthess30@gmail.com
Sunshine	Deborah Smeltzer	913-526-6977	deborah.smeltzer@gmail.com
Historian	OPEN		
Tour Codirector	Bill Hills	913-406-2085	bill.hills.sh@gmail.com
Car Show Coord.	Andy Dugan	816-548-7436	andug125@gmail.com
Christmas Party	Andy Dugan	816-548-7436	andug125@gmail.com
Memorial Day Picnic	Andy Dugan	816-548-7436	andug125@gmail.com
Refreshment Coord.	Steve Woerdehoff	913-449-2229	steves_skiing@yahoo.com
Webmaster	Joe Nicholas	913-710-3292	joseph.h.nicholas@gmail.com

Newsletter Articles

Information for the newsletter should be sent to Joyce Tweedy. Her email address is jtweedy@swansonbernard.com, or snail mail, 4600 Madison, Ste. 600, Kansas City, MO 64112 or phone Joyce at 816-410-4613.

The deadline for submission of articles is the 8th of the month.



Sunshine Report

Happy Summer!

I hope everyone was able to get out and enjoy the great weather we have recently had.

Sadly, POA member Dennis Cawley, passed on July 19, 2025. A condolence card has been sent to Janet and the family. Please keep Janet and the Cawley family in your thoughts during this difficult time.

Deborah Smeltzer
913-526-6977

Dog Days of Summer

The Dog Days of Summer, a period of hot, humid weather, typically fall between July 3rd and August 11th. This term originates from ancient Greece and Rome, where they believed the star Sirius, also known as the "Dog Star," added to the sun's heat, making the summer days even hotter.

Minutes - July 28, 2025

The Plain Ol' A's met on July 28, 2025, at Tomahawk Ridge Community Center. President Andy Dugan called the meeting to order at 7:00 P.M.

Guests and New Members-No guests or new members were at the meeting.

Minutes-The minutes were approved.

Treasurer's Report-The treasurer's report was approved as read.

Sunshine Report-Dennis Cawley died.

Tours-The following activities are being planned:

August 15	Aviation Institute
August 23	Johnson County Museum
September 13	Model A Day tour being planned
October 2	Cedar Lake Village car show
October 4	Turner Barn car show

Car Shows-

October 2	Cedar Lake Village car show
October 4	Turner Barn car show

Ladies' Night Out-We will eat at Strouds on August 20. A host is needed for September.

Webmaster-Joe was not at the meeting.

Meeting location-We will be meeting at Tomahawk Ridge Community Center for the remainder of the year. Monticello Historical Society has sold their building and refunded our payment for the remainder of the year.

Refreshments-Refreshments were provided by Reed Partridge and Keith and Kathy Nesbitt,
Nancy Hess, Secretary

August Ladies Night Out

Date: August 20, 2025

Time: 6:30

Sponsors: Bob & Nancy Hess
Phone: 816-668-3902
roberthess30@gmail.com

Place: Stroud's
8301 W. 135th Street, Overland Park, KS

If you plan to attend and have not signed up yet, please contact Bob or Nancy Hess.

Ladies Night Out 2025 Sponsor Sign Up

January	Lance & Terri Burton
February	John & Deborah Smeltzer
March	Ken and Fran Coleman
April	Bill & Deb Hills
May	Picnic
June	
July	Alan South
August	Bob & Nancy Hess
September	Mystery Tour
October	Ron & Theresa Guenther
November	Andrew & Christine Dugan
December	Christmas Party

Plain Ol' A's Refreshments

2025

August 25	Bill & Debbie Hills Steve Woerdehoff
September 22	Deborah & John Smeltzer Lance & Terri Burton
October 27	Alan South & Georgia Bianchi Andy Dugan
November 24	Lance & Terri Burton Open
December	Christmas Party

Refreshments

Paper plates, plastic silverware, napkins, and cups are provided by the Club.

If you are not able to serve, please contact Steve Woerdehoff at 913-449-2229 or steves_skiing@yahoo.com soon as you can.

Thank you, everyone for helping!

- Steve Woerdehoff

Tours 2025

August 15, 2025 The HOA Club has invited us to the **Aviation Institute**, 4100 Raytown Road, Kansas City, MO 64129 at 10:00.

The Aviation Institute is a school just west of Royals Stadium which teaches and certifies students to repair and maintain airplane engines. Old car guys will enjoy seeing the tools used with aircraft engine maintenance, and we will do this on a weekday so that we can see students doing class work.

If you have a grandson, granddaughter, niece (yes, lots of girls are going into the aircraft maintenance field), nephew, or whatever, that doesn't really want to go to college and enjoys using their hands, **BRING THEM!** Aircraft mechanics are well-paid, and those who get the various certifications get jobs all over the planet.

Lunch at Dagwood's after the tour. All of you know about Dagwood's on Southwest Blvd. in KC, KS. They recently opened a second location in Raytown, and we're going to check it out! **Dagwood's**, 6204 Raytown Trafficway, Raytown, MO. Please RSVP by Wednesday August 13 to me (bill.hills.sh@gmail.com) or (913-406-2085) to sign up.

August 23rd we will tour the **Johnson County Museum**, 8788 Metcalf Ave, Overland Park. We will meet at the museum at 10:00. After the museum we will go to lunch at Olive Garden.

The museum has several new exhibits to see. Hopefully it will not be too hot so that we can drive our Model As. Contact me (bill.hills.sh@gmail.com) or (913-406-2085) to sign up.

September 13th is International Model A Day. I am planning a mystery tour. We will meet at the McDonald's in Olathe (Harrison/K7 and Hamilton Circle) at 10:00. This will also be Lady's Night Out for September as we will end our tour at a restaurant. I will have a sign up sheet at the next meeting or you can contact me (bill.hills.sh@gmail.com) or (913-406-2085) to sign up.

October 2nd the 5th Annual Cedar Lake Village Car Show. This year, the event will take place on Thursday, from 2:00 PM to 4:00 PM.

The Cedar Lake Village Car Show is a wonderful opportunity to showcase your vehicles and connect with fellow car enthusiasts in a relaxed and enjoyable atmosphere. "It also gives our Residents an amazing opportunity to enjoy a car show in their own backyard! Whether you own a classic car, a modern marvel, or something in between, we welcome you to participate again in this fun-filled event. Please note that this is a non-competitive event with no prizes - just a chance to share in the joy of cars and camaraderie."

To help us ensure a fantastic experience for all attendees, we kindly ask that you RSVP by September 30th. Please RSVP by to Cheyenne at cdains1@good-sam.com, if you have any questions feel free to email those over as well.

October 4th Turner Barn Car Show. More info to come. We will go to the Gardner Airport for breakfast before going to the car show

Bill Hills
bill.hills.sh@gmail.com
913-406-2085

2025 Calendar

August

23 Johnson County Museum
 25 POA Meeting

September

13 International Model A Day
 22 POA Meeting

October

2 Cedar Lake Village Car Show
 4 Turner Barn Car Show
 27 POA Meeting

November

11 Leavenworth Veterans Day Parade
 24 POA Meeting

December

TBD POA Christmas Party





Dave Ryan	August 5
Ron Guenther	August 7
David Collis	August 17
Eddie Griggs	August 19

George & Cathy Hess	August 2
Ron & Theresa Guenther	August 17
Darrell & Deb Enloe	August 20

Dennis Cawley

Nov. 26, 1940 - July 19, 2025

Dennis Cawley, 84, passed away peacefully surrounded by his wife and daughters on Saturday, July 19, following a brain hemorrhage.

Dennis was raised on a farm northeast of Lawrence, KS. He was an All-State end on the Lawrence High School state championship football team before accepting a St. Benedict's College scholarship over scholarship offers from several large state universities. As a senior, he served as football team captain and was highlighted in Sports Illustrated's Small College Football edition. After graduation, Dennis worked as a graduate assistant coach for football, basketball, and baseball at St. Benedict's.

Dennis was drafted into the Army and served honorably for two years at Fort Benning, GA. After service, he worked for a major department store as a Personnel Manager in Little Rock, AR., and Lafayette, LA.

Moving back to the Kansas City area, Dennis transitioned to the railroad industry. He was a trainman with the Frisco Railroad, then became one of the original trainers at the newly founded Conductor Training Center at Johnson County Community College (JCCC). He worked for Burlington Northern and was an associate and adjunct professor at JCCC. Dennis developed corporate training programs used not only by company employees but by other major railroads and short lines. He developed specific JCCC programs to train students to be placed with various railroads around the country.

Dennis committed his life to supporting his faith, family, and education. He married Janet O'Sullivan in 1964 and they have four daughters and six grandchildren. Dennis was an active member of St. Joseph Parish in Shawnee, Kansas. He served as head of CYO football, a member of the School Board and Knights of Columbus. He also coached CYO football and basketball. He enjoyed attending his grandchildren's activities, sports, his Model A car club, reunions with friends from high school, the railroad, and the CYO football team he coached, and especially spending time on his nearby hobby farm where he grazed cattle and hosted family and friends.

Dennis is survived by Janet, his wife of 61 years; daughters Debbie Moeller (Mike, deceased), Carolyn Cawley, Michelle Masoner (Chris), and Jennifer Cawley; grandchildren Remi, Mack, and Hollis Moeller and James, Paul, and Maggie Masoner.

He is also survived by siblings Robert "Bob" (Barbara, deceased), Galen (Cathy), Phyllis Forchee (Jerry, deceased), Warren David, and many beloved in-laws, nieces, and nephews. Dennis was preceded in death by his parents, Thomas Jr. and Frances Seifner Cawley, and siblings Fr. Thomas Cawley, CMI, Marie Ice (Tony), and Evelyn Desch (George).

The family would like to thank the physicians and staff at The University of Kansas Health System who, over the last five years, ensured Dennis lived with strength and died with dignity.



Notes on National Touring

By John Smeltzer

The notes below are presented as serious information for anyone considering first time participation in a national tour. They could be jarring to readers used to the typically up-beat offerings in *The Plain Dealer*. They are not comprehensive of my full National Tour experience, but they do provide a few random insights and suggestions. If you lean toward caution instead of blind leaps of faith, read on.

On your marks – What should you consider to properly evaluate the opportunity?

- Where are you going? Be wary of states in which you have outstanding warrants or needy relatives.
- When are you going? Be especially attentive to the dates. Our recent departure was scheduled for Friday, the 13th! (The first missed off-ramp.) Aside from that concern, book lodging early. Room availability can dry up quickly and sleeping in a Model A was never something Edsel or Henry took as a serious design goal.
- Who's coming with you? Since this amount of travel carries real risks of breakdowns and other misfortunes, travelling within a group affords some confidence and comfort. It is imperative to evaluate those joining you on this adventure.
 - Some of them will bring hard-earned Model A travel experience to the discussions. Others might offer good advice based on logic and common sense. Cling to these people.
 - Avoid all others. They cannot be relied upon. Renounce them, their disciples and all their works. Other clues to their character are that they can not be viewed in the reflection of a rear-view mirror and they smell of brimstone.
- How are you getting there? Model A direct ...OR... truck pulling Model A on a trailer? If the caravan you're traveling with is trailering their Model As to the start, then so are you. You will have many questions.
 - "What size of trailer do I need?"
 - "What are the pitfalls of borrowing a trailer?"
 - "How do I navigate thru hotel parking lots with a trailer?"
 - "How do I navigate thru gas stations with a trailer?"
 - "Should the entire caravan navigate with trailers through the same gas station at the same time?"
 - "Is my trailer safe?"
 - "Is my car safe on a trailer?"
 - "How can I pull a trailer safely?"
 - "Is it possible to have fun pulling a trailer?"
 - "What amount of liability insurance should I carry when pulling a trailer?"
 - "Should I still drive after having been diagnosed with **Post Trailer Stress Disorder**?"
 - Etc.

Interrogate the know-it-alls from your Model A club. Insurance providers, financial advisors and therapists should also be consulted. Demand full answers to all of your worthy questions.

- What is your route? Whether to travel on Interstates vs State Highways is a big question. The interstate with faster speeds and increased traffic is more harrowing whether you're in a Model A or a truck pulling a trailer. Personally, I prefer state highways because I feel safer and can drive at a lower level of alert ...and the scenery is better.
- Does the tour lodging move day to day or stay in one place? If you'll be returning to your starting point each day, this will be easier...just one reservation to make. If not, then you'll have multiple reservations to make and then each day,
 - pack up your stuff,
 - check out,
 - drag your stuff to your car,
 - stuff your stuff into your car,
 - drag your stuff out of your car,
 - check in and, finally,
 - unpack your stuff.

This will also require that you have enough room in your Model A for your stuff. This could be challenging in smaller cars. There might be others in the caravan with larger cars who might help you out. Promise them anything in exchange. You need your stuff.

Get Set – What should you do to prepare? What to bring?

- Model A – if your car is running reliably, don't change anything. As long as the engine runs and propels you forward, drop the wrench! If the brakes bring you to an eventual stop, then hands off! All other functional matters can be fixed on the roadside by those with more experience and baling wire. This is your payback for them having dragged you along. Additionally, they will want to see that things are repaired well so that no further mechanical interventions and delays are required. As a result, your car will return home in a much better condition than before you left.
- Trailer – Check for the existence of signal lights, tires, hitches, brakes and straps. Whatever their condition, you'll have plausible deniability with the highway patrol.
- Truck (to pull trailer) – This is where you want to spend some time and attention to ensure mechanical perfection. After all, you can abandon a trailer and Model A almost anywhere, but you'll need reliable transportation to get you quickly away from incidents and to home in another state.
- CB Radio – It is encouraged to have a CB. Try to learn the fine art of adjusting the squelch and volume controls. Just try. I dare you. The noise from the static will curl your hair. The volume seems to change on its own. They are an awkward and noisy distraction but one cannot argue against their advantages. Alternatives such as yelling out of open windows at speed can be attempted but intended messages are lost entirely....and hats, sunglasses and chewing gum can not always be retrieved.
- Tools, parts, and Les Andrew's big red book – Yes, you are going to dump responsibility for the long-ignored maintenance of your car, and the fallout, to the more experienced in your caravan. They will probably have the expertise and tools but confer with them so that amongst your travelling companions, there are sufficient parts and tools to reconstruct an entire Model A from

scratch. Seek agreement from your travelling companions on which model is preferred. A Model A tow-truck is always a good candidate.

- Rabbit feet - 4 should do it and that fairly uses up one rabbit. For better luck, bring the rabbit.
- Cold drinks - a must!
- Plentiful snacks – These are also recommended, especially by those familiar with the hors d'oeuvres available at the Donner Party. Consider the aforementioned rabbit as part of the family. Bring extra sauce.
- Spouses and spare money - also useful.
- Everything else you own – bring it!

Go! – What can make a smooth tour experience more likely?

- Good attitude – Adversity can be defeated when confronted with the right attitude. For example, things can be going your way when, onto your Model A, a piano drops from above. Delay your initial negative reaction. First, because there are few gifted pianists. A bit of further reflection will reveal that the remainder of your tour will be from the comfort of a modern rental with air conditioning. Things are truly looking up. It takes just a bit of time and perspective. A good attitude is even easier to maintain when out of the heat and humidity.
- Good whiskey – Never pass a chance to end the day at the hotel with a libation to commemorate survival. Invite fellow travelers to join you. Bad whiskey works too.
- Plentiful sleep – Go to bed early. There is nothing else to do in the hotel. Get up refreshed and ready to face the continental breakfast. Your results may vary.
- Watchful eye - Check fluid levels and the ground for puddles at the start of each day before heading to the parking lot.
- Destination awareness - Know where you're going – generally, unless you've been selected to lead the caravan.
- Timely Communication – There will be important things to say to those in the other cars. It may be a missed turn, a blown tire, a steamy radiator or worse. Transmission of this vital info will result in a flurry of more messages, well-choreographed car maneuvers and then corrective teamwork. Even urgent pleas for a restroom stop from the soon-to-be incontinent will be met with universal appeal, and the group will respond like a well-oiled machine. “Teamwork / Herd Mentality,” “tomayto / tomahto.” Communication makes it happen.

The Finish Line - What to do next?

- Document the experience - Record the good and the bad of what you experienced. Use lots of adjectives. When it comes time to consider setting out on future large tours, review your notes and you'll be armed with enough details to nip the idea in the bud. You'll resist as best as you can,

but doubts may later creep in and corrode your resolve. If better judgement loses this internal struggle, this same good/bad list might allow you to better prepare for the road ahead.

- Educate others – This is the fun part. Tell stories that make you appear heroic and carry a tiny nugget of learned truth. The smaller the nugget, the better. This is because larger truths require longer stories and nobody will listen to you for very long. Also consider leaving out names when retelling stories that might cause embarrassment or testimony in a court of law. Although human nature enjoys first-rate gossip, our shared self-image holds tattle telling to be an odious practice. With any story, consider whether you have covered any whiff of tattle telling with sufficiently juicy entertainment. Working through this can be challenging. Be sure to invent enough facts to win the audience over.

Final-Final word

I've passed along the lessons learned as I found them on my first national tour. I hope these words of advice can contribute to your success. If not, know that even difficult experiences make great stories. Apollo 13 was no cakewalk for the astronauts, yet everyone loved the movie despite the conspicuous absence of old cars.

Everyone has stories. You'll figure out what makes your adventure valuable to you, and others, by telling stories. Tell them and tell them again. When they are all polished-up, submit your stories to the newsletter. They don't have to be about the national tour. Some stories will rival those of other intrepid adventurers. Some won't. Either way, we will learn about how to face a world full of challenges and what it's like to be you. Storytelling is the point of going on adventures. Go on one soon!



Model As Traveling down a wooded country road during the 2025 MAFCA National Tour - President Ed Tolman, photographer.

Jim's Tech Tips

"Ignition Misfires"

We've all experienced it. When the engine is cold and first started up, the engine is running rough and you can tell not all 4 cylinders are firing. It usually clears up in under a minute. But later, when the engine is warm, you should not feel a miss when climbing a hill or accelerating into traffic. If the power is just not there, like you know it should be, where to look? It could be a carburetor problem, but don't overlook fouled spark plugs and problems in the distributor.

Check the point gap in the distributor. The cam follower wears as you drive and the point gap closes down, giving a weak spark. So check it and increase the gap back to 0.020" if needed. While you are there, look for burned points and clean them up or replace them; you might have a bad or weak condenser.

Look at the rotor. Make sure the black flat spring is touching the underside of the cap, and is not burned up. Wipe off any oil film on the rotor.

Look at the underside of the distributor cap. Inspect the graphite button on the underside. I have seen caps with the entire button broken off and missing.

Look at the inside of the distributor body (the black plastic piece). Look for an oil and dirt film on the inside. Wipe it out with a clean cloth. Look for "carbon tracks" on the inside of the cap, where the spark is jumping down to ground on the metal housing. (See photo.) Replace if needed.



Until next time, *Have a Model A Day!*
Jim

Bulletin Board

Place notices and advertise items for sale. No charge for members and other individuals selling their own items. The Club has voted to include ads from other local Model A Clubs. ***Items will run in three issues, unless renewed or canceled. Date of first insertion is in parenthesis.***

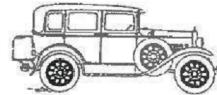
Commercial Business ads are: business card size - \$25.00 per year; quarter page size - \$35.00 per year; and half page size - \$50.00 per year. Fees for commercial ads includes a free subscription to the Club's monthly newsletter, *The Plain Dealer*.



Bert's Model "A" Ford Center

2767 S. Tejon, Englewood, CO 80110
ph# 303-293-3673 or 800-321-1931
email address - parts@modelastore.com
www.modelastore.com

We buy and sell original and reproduction Model A Ford parts!



"A" REPAIR SHOP

BOB HESS

12731 CHERRY STREET, KANSAS CITY 64145
816-941-4101 Cell: 816-668-3902

SERVICE - REPAIRS - UPGRADES AND COMPLETE RESTORATION
OVER 20 YEARS EXPERIENCE - MAFCA CERTIFIED MASTER JUDGE



Model A Ford Restoration - Repair

Ron Guenther

1327 Kansas
Leavenworth, KS 66048
(913) 682 - 2545

Complete restoration
Repair
Paint
Interiors

Member MAFCA Since 1981

EVERYTHING FROM A TO Z!



**FREE
CATALOG**
\$10.00 Outside the U.S.

888-262-5712
snydersantiqueauto.com



THE WORLD'S LARGEST SUPPLIER OF 1909-31 FORD PARTS!

M M

MITCHELL MANUFACTURING



**Steve & Cyndi Mitchell
Mitchell MFG.**

530-458-4500 800-859-2088
www.mitchelloverdrivemfg.com
mitchmanfc@frontiernet.net

MODEL A FORD
SYNCHRONIZED-TRANSMISSION
VINTAGE CAR OVERDRIVES

FORD OVERDRIVES/UNDERDRIVES
1928-1948

P.O. Box 925 1157 Parker St. Colusa, CA 95932

BOB BOND'S ARTISTRY



816-554-1800

1-800 BOB BOND

25612 NE Colbern Rd. Lee's Summit, MO 64086
email: bob@bobbondart.com • www.bobbondart.com

Model A Parts for Sale

Enclosed is a list of parts I am selling from older Model A restorations. If you know of anyone who might have an interest, please let me know. I can be reached at pgonsher@hotmail.com, or text 913-223-9635. (6/25)

Phillip Gronscher

Frame
Front axle
Rear axle
Hood
Splash aprons
Several engine blocks
Manifolds
Pistons
Heads
Transmission
Clutch
Rear fenders
Many miscellaneous parts
Several boxes of Model A magazines
Steering Wheel Shaft
Clutches

 **Gaslight Auto Parts**
since 1962

1909-48 FORD Parts
Model A, T, & V-8 Parts



800. 242.6491

www.gaslightauto.com

1445 S. US Hwy 68, Urbana, OH 43078



MAFCA Star Membership 2023 USA Application

Please Print

Name: _____

Spouse: _____

Address: _____

Telephone Number _____

Sponsoring MAFCA Member: _____

- Provide Digital Copy of *The Restorer* (email required): Yes ____ No ____
 - Email: _____
- I give MAFCA permission to publish my name and contact information: Yes ____ No ____

Benefits of Membership in MAFCA

- The Restorer Magazine, 6 issues per year and a digital edition.
- National Tours, Conventions, Nearly 300 Chapters Worldwide, Many Local Events and a National Office to support you.
- www.mafca.com, our official website, Email newsletters, Flying Quail flyingquail@yahoo.com and MAFCA on the Road mafca_ontheroad@yahoo.com
- Social media availability through our Facebook Group, Model A Ford Club of America, Technical Questions answered modelatechquestions@gmail.com,

Visit MAFCA.com to view merchandise store

Popular MAFCA Store Items Include:

- *The Coupe Book, Tudor Book, The Victoria Book*
- *Mechanics handbook Vol. I, Vol II and the Trouble Shooting Guide by Les Andrews*
- *Model A Restoration Guidelines and Judging Standards*
- *Model A & AA Paint & Finish Guide and the New How to Restore Your Model A Vol 10*



Mail Application to:
Model A Ford Club of America
250 S. Cypress St.
La Habra, CA 90631-5515





**PLAIN OL' A'S MODEL A FORD CLUB
NEW AND RENEWAL MEMBERSHIP APPLICATION**

Last Name: _____ Home Phone: _____

First: _____ Cell Phone: _____

Spouse: _____ Email: _____

Address: _____

City: _____ State: _____ Zip: _____

Has any of the above information changed since the last Roster? _____

Model & Year of Model A's: _____

Insurance Company: _____ Policy # _____

Are you interested in Touring? _____ Seminars? _____ Need Help with your Model A? _____

Are you a member of MAFCA? _____ MARC? _____ How long have you owned a Model A? _____

_____ Renewal dues are \$25.00 per year (**DUE BY DECEMBER 31**) and include an email version of the newsletter.

_____ Include a hard copy of the newsletter in addition to the email version with my membership renewal for an **additional annual charge of \$10.00.**

_____ New Member (dues are \$13.00 plus \$1.00 for each month remaining in the year).

_____ New Members may include an **optional .85 cents per month** for a hard copy of the newsletter along with their free email copy.

_____ Would you be willing to serve refreshments at a membership meeting?

Birthdate(s) (MM/DD) _____

Anniversary Date (MM/DD/YY) _____

Please send this application and your check payable to Plain Ol' A's to:

Bob Hess, Treasurer

12731 Cherry Street, Kansas City, MO 64145

The Club newsletter, *The Plain Dealer*, is sent once a month via email

Please be sure to include your email address.

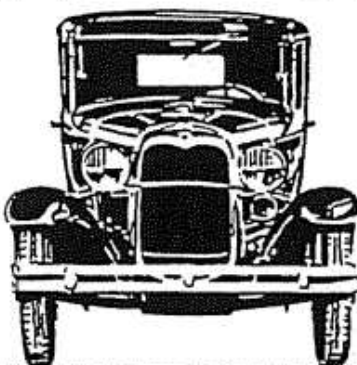
Email: _____

FIRST CLASS MAIL

4600 Madison, Suite 600
Kansas City, MO 64112-3031



SHADE TREE MECHANIC



PLAIN OL' A'S

MODEL A FORD CLUB
KANSAS