

# THE PLAIN DEALER

Official Publication of the Plain Ol' A's

Mailing address: Plain Ol' A's, P O Box 860782, Shawnee, KS 66286-0782

September 2020

The Club meets  
the 4<sup>th</sup> Monday at 7:30 p.m.  
Shawnee Masonic Lodge  
11109 Johnson Drive, Shawnee, Kansas

Next Meeting  
Monday  
September 28, 2020

[www.plainolas.com](http://www.plainolas.com)

## President's Message

Labor Day has come and gone along with the unofficial end to summer. The official end of summer is September 22 and marks the Fall Equinox. It also means fall is quickly approaching with lots of activities to get our Model A's out on the road. The temperate fall weather makes it a great time to join a tour or take it to a car show. Check out the calendar of events and join in on the fun.

With COVID-19 state, county, and local mandates still in place, we will be holding a monthly membership meeting this month (September 28 at 7:30). If you are high risk or do not feel comfortable joining us, please feel free to stay home. The Club will implement social distancing by removing tables and setting up pairs of chairs 6 feet from other pairs. Families/households will be required to sit together. Refreshments will not be provided (feel free to bring your own if you wish). The Club will wipe down frequently touched surfaces beforehand and will have hand sanitizer available for your use. Face masks are required, per the local and state mandates. If you have questions or concerns, please contact one of the Club Officers listed on page 2. I look forward to seeing you there. With everyone's support and understanding, we will persevere. Please stay safe and keep the faith. Now without further ado, I give everyone a 6 car length AHOOGA on!

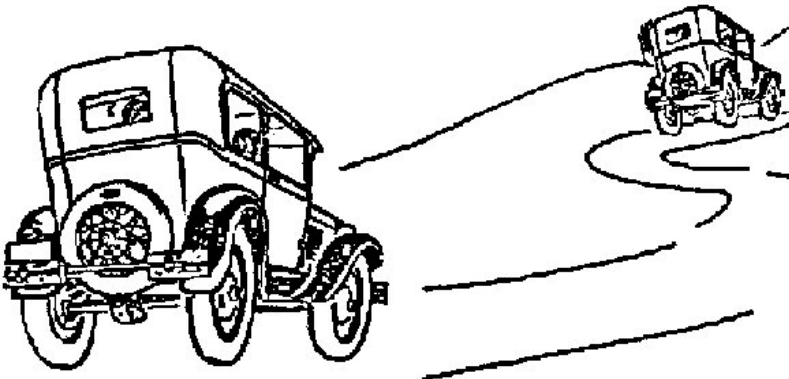
– Justin Read, President

### In This Edition

|  |      |
|--|------|
| President's Message                    | 1    |
| Minutes                                | 3    |
| Treasurer's Report                     | 3    |
| Calendar of Events                     | 4    |
| Car Shows                              | 4    |
| MAFFI Minute                           | 4    |
| Tours                                  | 5    |
| Bulletin Board Ads                     | 7-10 |
| MAFCA Application                      | 11   |
| Plain Ol' A's Registration Application | 11   |

| Sunday         | Monday | Tuesday                    | Wednesday | Thursday | Friday | Saturday |
|----------------|--------|----------------------------|-----------|----------|--------|----------|
| September 2020 |        |                            |           |          |        |          |
|                |        | 1                          | 2         | 3        | 4      | 5        |
| 6              | 7      | 8 ★<br>NEWSLETTER DEADLINE | 9         | 10       | 11     | 12       |
| 13             | 14     | 15                         | 16        | 17       | 18     | 19       |
| 20             | 21     | 22                         | 23        | 24       | 25     | 26       |
| 27             | 28     | 29                         | 30        |          |        |          |

| Sunday       | Monday | Tuesday | Wednesday | Thursday                   | Friday | Saturday |
|--------------|--------|---------|-----------|----------------------------|--------|----------|
| October 2020 |        |         |           |                            |        |          |
|              |        |         |           | 1                          | 2      | 3        |
| 4            | 5      | 6       | 7         | 8 ★<br>NEWSLETTER DEADLINE | 9      | 10       |
| 11           | 12     | 13      | 14        | 15                         | 16     | 17       |
| 18           | 19     | 20      | 21        | 22                         | 23     | 24       |
| 25           | 26     | 27      | 28        | 29                         | 30     | 31       |



## 2020 Club Officers

|                |                  |              |                       |
|----------------|------------------|--------------|-----------------------|
| President      | Justin Read      | 816-547-8608 | onsitetechn@mac.com   |
| Vice President | John Smeltzer    | 913-638-7032 | js5200ks@gmail.com    |
| Treasurer      | Bob Hess         | 816-668-3902 | rhess@kc.rr.com       |
| Secretary      | Nancy Hess       | 816-679-9051 | nancy12731@kc.rr.com  |
| Director       | Ken Coleman      | 913-631-2752 | kcoleman555@gmail.com |
| Director       | Bruce Mills      | 913-299-8384 | bmillskc@aol.com      |
| Director       | Theresa Guenther | 913-682-2545 | ronsaresto@yahoo.com  |

## Committee Chairpersons - 2020

|                     |                      |              |                               |
|---------------------|----------------------|--------------|-------------------------------|
| Calling             | Ken Coleman          | 913-631-2752 | kcoleman555@gmail.com         |
| Ladies Night Out    | Ken Coleman          | 913-631-2752 | kcoleman555@gmail.com         |
| Membership          | Chuck Marcus         | 913-681-6079 | cfnamarcus@yahoo.com          |
| Newsletter          | Jim Bernard          | 816-410-4610 | jbernardjr@swansonbernard.com |
| Restorer Articles   | Bruce & Vickie Mills | 913-299-8384 | bmillskc@aol.com              |
| Seminars            | Bob Hess             | 816-668-3902 | rhess@kc.rr.com               |
| Sunshine            | OPEN                 |              |                               |
| Historian           | Larry McDonald       | 913-385-2530 | mchawk46@gmail.com            |
| Tour Codirector     | Theresa Guenther     | 913-682-2545 | ronsaresto@yahoo.com          |
| Tour Codirector     | Bill Hills           | 913-406-2085 | bill.hills.sh@gmail.com       |
| Car Show Coord.     | Justin Read          | 816-547-8608 | onsitetechn@mac.com           |
| Christmas Party     | John Smeltzer        | 913-638-7032 | js5200ks@gmail.com            |
| Memorial Day Picnic | John Smeltzer        | 913-638-7032 | js5200ks@gmail.com            |
| Refreshment Coord.  | Fran Coleman         | 913-481-6658 | fcole61@gmail.com             |
| Webmaster           | OPEN                 |              |                               |

## Newsletter Articles

Information for the newsletter should be sent to Jim Bernard, Jr. His email address is [jbernardjr@swansonbernard.com](mailto:jbernardjr@swansonbernard.com), or snail mail, 4600 Madison, Ste. 600, Kansas City, MO 64112 or phone Jim at 816-410-4610 or Joyce at 816-410-4613.

The deadline for submission of articles is the 8<sup>th</sup> of the month.

## MAFCA

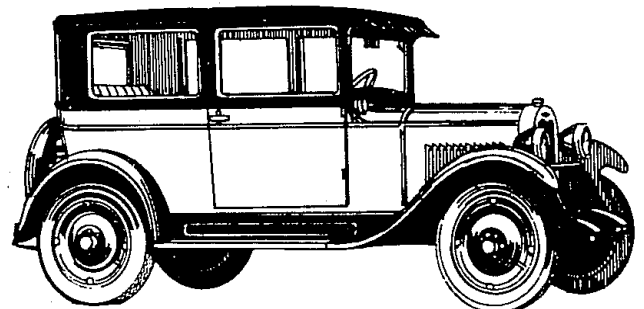
MAFCA, the Model A Ford Club of America, encourages national membership. There is a membership form in the back of the newsletter for anyone who is interested.

## Facebook

Plain Ol' A's is now on Facebook: Search For "Plain Ol' A's" and request to join the Private Group.  
<https://www.facebook.com/groups/2581927338560371>

## Welcome New Members

Andrew Dugan and Christine South  
 1009 SW Sunflower Street  
 Lee's Summit, MO 64081  
 816-591-5511 Home  
 816-458-7436 Cell  
 1931 S/W Fordor  
 Email: [csouth@hotmail.com](mailto:csouth@hotmail.com)



## Minutes - August 24, 2020

The Plain Ol' A's met on August 24, 2020, at the Masonic Hall. President Justin Read called the meeting to order at 7:30 P.M.

Guests and New Members-Bob Vanden Berghe was present.

Minutes-The minutes were approved as published in The Plain Dealer.

Treasurer's Report-Bob Hess gave the treasurer's report. The balance is \$15,289.26.

Sunshine Report-Leland Daise's brother died.

Ladies' Night Out-There will be no ladies' night out for the remainder of the year.

Tours-The following tours are being planned.

September 19-Tour to Kauffman Gardens

November 11-Leavenworth parade

November 14-Cold weather tour

Shawnee Town Events-Dates for Shawnee Town events are as follows: October 14.

Car Shows:

September 27-City Market--cancelled

October 31-HyVee car show

Other Business-The club has gas tank shields for sale for \$3.00. The board will consider increasing dues for members receiving the newsletter by mail. We will

make a decision regarding the Christmas party at a later time.

Regional Meet-Ron will contact other hotels regarding available dates and prices.

Refreshments-There were no refreshments. We will not have refreshments for the remainder of the year.

Nancy Hess  
Secretary

## Treasurer's Report - August 2020

|                             |                |             |
|-----------------------------|----------------|-------------|
| Beginning Balance 7/31/2020 |                | \$15,289.26 |
| Checking Balance            | \$1,598.83     |             |
| Income                      |                |             |
|                             | TOTAL INCOME   | + 0.00      |
| Expenses                    |                |             |
| August Newsletter           | 54.22          |             |
|                             | TOTAL EXPENSES | - 54.22     |
| Money Market Account        |                |             |
| Beginning Balance           | \$12,427.94    |             |
| Interest Payment            | 1.06           |             |
| Total Money Market Balance  |                | \$12,429.00 |
| Ending Balance 8/31/2020    |                | \$15,236.10 |

Submitted by Bob Hess, Treasurer

\*\*\*\*\*

## Five Myths About Lightening

Myth #1: A tree can act as sufficient shelter during a thunderstorm

Fact: Not true. Standing underneath or near a tree is the second most dangerous place to be during a thunderstorm; the most dangerous is being outside in an open space. An enclosed building with wiring and plumbing is the safest place to be during a storm. Remember: Trees, sheds, picnic shelters, tents or covered porches will not protect you from lightning.

Myth #2: Lightning victims carry an electrical charge. If you touch them, you can be electrocuted.

Fact: Not true. The human body does not store electricity. If you are able to, you should give a lightning victim first aid and/or immediately call 911.

Myth #3: If you are trapped outside during a thunderstorm, crouching down will reduce your risk of being struck by lightning.

Fact: No. Crouching down will not make you any safer. If you are stuck outside during a storm, keep moving toward a safe shelter.

Myth #4: Lightning never strikes in one place twice.

Fact: Actually, lightning can, and often does, strike the same place repeatedly - especially if it's a tall and isolated object. For example, the Empire State Building is hit about 25 times per year.

Myth #5: Lightning cannot strike in an area if it is not raining and skies are clear.

Fact: Not true. Do not wait until a thunderstorm is immediately overhead and for rain to begin to act. If you can hear thunder, lightning is close enough to pose an immediate threat, even if the sky above you is blue.

*from article by National Oceanic and Atmospheric Administration and  
reprinted by EarthSky.org*

# Calendar of Events

- Sept. 19 Model A Ford Day, Kauffman Gardens, KCMO, 4800 Rockhill Rd.  
Meet at 9:30 a.m. at Krispy Kream Donuts, Shawnee Mission Prkwy. & Antioch Rd.  
for running board breakfast, donuts provided by club, leave at 10:00 a.m.  
Social distance picnic at Riverfront Park, Parkville, MO
- Oct 14 Old Shawnee Town - History on Tap
- Oct. 31 Hy-Vee Car Show, Olathe, 119th & Ridgeview
- Nov. 11 Leavenworth Veterans Day Parade
- Nov. 14 Cold Weather Tour - Possible tour to Ft Leavenworth Lewis and Clark Center  
(CGSC), Foreign Officers Gift Collection

Future calendar of events are on hold until further notice.

All event days and times may be subject to change. If you would like to schedule a tour or event, please allow 6 - 8 weeks notice, due to our newsletter coming out in the middle of the month and meetings at the end of the month. To schedule a tour or car show, call Theresa or Ron Guenther (913) 682-2545 or email [www.ronsaresto@yahoo.com](mailto:www.ronsaresto@yahoo.com), or talk to us at a POA meeting.

## Car Shows

All events are considered tentative due to the current COVID-19 situation and host organization decisions.

- October 14 Shawnee Town History on Tap - Revolution! (6-8:30 pm) \$5/person RSVP at 248-2360
- October 31 HyVee Car Show 18101 W 119th St, Olathe, KS 66061 (10-2)
- CANCELED Shawnee Town Wheels & Dreams Car, Truck & Bike Show
- CANCELED Art of the Machine Car Show - River Market KCMO

## MAFFI Newsletter Minute August 2020

The Gilmore is excited to have a new mobile store which is a restored 1930 Ford Model A Pick-Up. The Garage Works students did the restoration on the vehicle and their operations staff created the slat walls, awning and sliding storage drawers.

The mobile store is stocked with impulse buy items like logo'd hats, T-Shirts, mugs, as well as books, model cars and other items as well as snacks, sodas and water. They are able to utilize the mobile store on numerous locations around our campus. This is especially valuable when there are events after hours or when the museum store is closed.

The vintage signage lettering was done by a local artist and made to look like it was done in the 1930's.

On your next visit to the museum, please check out our merchandise at the Gilmore Gift Shop

Marsha Quesnel, MAFFI Trustee



### Tours

Before you know it, we'll be seeing the colors of Fall. That means that the Model A tour season will soon be over. There still will be opportunities for us to get our cars out and about for a tour.

Our August Mystery Destination Scenic Tour had ten cars show up for the drive through Wyandotte, Leavenworth, and Johnson Counties. Ron and I guided the group through Leavenworth showing off the scenic views of the city. Highlighting the tour was the view of the Missouri River and the Centennial Bridge into Missouri from North Esplanade Park. North Esplanade Park was established as the first city park in the State of Kansas in 1854, the same year that Leavenworth was incorporated, making it the oldest city in the State of Kansas.

Everyone enjoyed the drive through Basehor and across the Kansas River to DeSoto and on to Lenexa's Sar-Ko-Par Park for the bring your own picnic lunch. After months of being apart, it was great to get together (social distancing) to socialize and visit. We had a beautiful day for our tour and a nice turnout.

Model A Ford Day is September 19th and we're planning to visit the Kaufman Gardens in Kansas City, Missouri, located south of the Nelson Art Museum. The Kaufmans were former owners of the Kansas City Royals and are buried at the Gardens. We'll meet at 9:30 a.m. at Krispy Kream Donuts on Shawnee Mission Parkway and Antioch Road for a running board breakfast provided by the club. We'll leave about 10:00 a.m. for the Gardens. When we're finished visiting the Gardens, we'll head up through Kansas City to Parkville, Missouri, for a picnic at Riverfront Park. Bring a picnic lunch and chairs for a social distancing good time. Call and let me know if you would like to attend if you didn't sign up at the last meeting.

Our touring calendar for the rest of the year includes a History on Tap, October 14th at Old Shawnee Town, Leavenworth's Veteran's Day Parade, November 11th, and a possible tour to Lewis and Clark Center (CGSC) at Ft. Leavenworth to view their collection of gifts from foreign officers who have attended this military school. More information will come out at a future club meeting and in the Plain Dealer Newsletter. Plan on signing up for one of our remaining tours before tour season ends.

Hope to see you soon on a club tour.

Happy Model A'ing!

Theresa Guenther, (913) 682-2545

\*\*\*\*\*

### 1930 Sweetheart of America

George Rifford received an email from the President of the MAFFI Museum. The 1930 "Sweetheart of America" has arrived at probably its last home, forever at the Model A Museum. They have plans of displaying this car and using it for educational purposes.



### Jim's Tech Tip by Jim Cannon

#### Bending the Radiator Overflow Tube Back



The Ford Service Bulletins of April, 1930 (page 450) advise that if you have excessive coolant loss through the radiator overflow tube, you can bend the tube back toward the back edge of the radiator filler neck. They also mention soldering in a brass washer where the tube passes through the baffle plate.

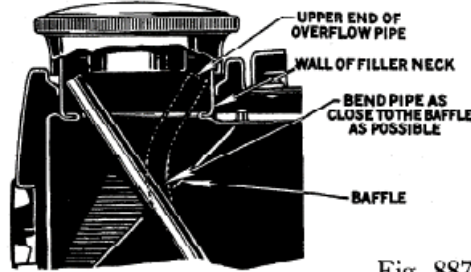


Fig. 887

To bend the tube, insert a larger Phillips screwdriver into the tube. You want the smooth shaft of the screwdriver to pretty much fill the tube, and don't have the tip of the screwdriver go below the baffle plate, about 2 to 3 inches. Then gently push the screwdriver back away from you a bit, remove the screwdriver a bit (~1/2"), then bend it some more. Repeat until the top of the tube is as far "back" as it will go.



If you need to, you can add a short piece of rubber tubing to the top of the overflow tube to raise the level in the top tank that much more before the coolant starts going out the overflow. But don't raise it too much or coolant will start leaking out of your radiator cap and make a mess on your paint and radiator shell.

I hope this helps. Have a Model A Day! Jim

www.thepricebook.com

## Burma Shave Signs

from the book *The Verse By the Side of the Road*, by Frank Rowsome, Jr.

Hinky Dinky  
Parley Voo  
Cheer Up Face  
The War  
Is Thru  
Burma-Shave

Golfers!  
If Fewer Strokes  
Are What you Crave  
You're Out of the Rough  
With  
Burma-Shave

Does Your Husband  
Misbehave  
Grunt and Grumble  
Rant and Rave  
Shoot the Brute Some  
Burma-Shave

Makes Shaving  
A  
Grin Game  
Not  
A Skin Game  
Burma-Shave

1880 A.D.  
Straight Razor and  
Shaving Soap  
1930 A.D.  
Safety Razor and  
Burma-Shave

Early to Bed  
Early to Rise  
Was Meant for Those  
Old Fashioned Guys  
Who Don't Use  
Burma-Shave

No Matter How  
You Slice It  
It's Still Your Face  
Be Humane  
Use  
Burma-Shave

Political Pull  
May Be  
Of Use  
For Razor Pull  
There's No Excuse  
Burma-Shave

### Bulletin Board

Place notices and advertise items for sale. No charge for members and other individuals selling their own items. The Club has voted to include ads from other local Model A Clubs. \*\*\*Items will run in three issues, unless renewed or canceled. Date of first insertion is in parenthesis.\*\*\*

Commercial Business ads are: business card size - \$25.00 per year; quarter page size - \$35.00 per year; and half page size - \$50.00 per year. Fees for commercial ads includes a free subscription to the Club's monthly newsletter, The Plain Dealer. For information, contact Jim Bernard, Jr. at 816-410-4610.

\*\*\*\*\*

## For Sale at Grandpa's Garage, DeSoto

12 Model A manifold heater covers,  
Choice \$30.00 and less, while they last.

8 Model A Horns ready to install, \$150.00 each

Approximately 50 old assorted jacks, \$5.00 to \$30.00

8 Model A jacks, one flip top

Also 10 original jack handles at \$15.00 each.

My building is under Contract of Sale. I am planning an auction in 2020. You can come now and buy your choice that you may not get at auction.

Everything for Sale: Cars, Car Parts, Tools, Memorabilia and literature, etc. Come and browse.

I still have 17 of the 29 cars for sale.

Always open on Tuesday mornings or call to schedule an appointment.

913-585-3326 Cell  
913-585-1313 Home - please leave a message.

**For Sale:**

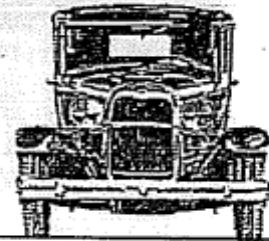
Ring & Pinnion 3:53 high speed  
Virtually new 1000 miles  
\$250 negotiable ring/ pinion 39/11 teeth  
Ken Coleman 913-481-6654 (6/2020)

**To Buy:**

I'm looking for a solid set of rear radius rods for my '28. My current rods have been rusting from the inside and sound like they're full of gravel.

Cheers,  
Todd Storrs  
248-736-1930 (7/2020)

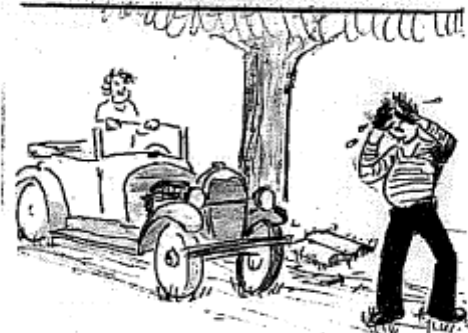
# SHADE TREE MECHANIC



UNDER THE SPREADING CHESTNUT TREE  
THE SHADE TREE MECHANIC STANDS  
WITH A WORRIED LOOK UPON HIS FACE  
AND VERY GREASY HANDS



I'VE WORKED ON THIS THING ALL DAY  
I'VE HAD THIS ALL APART  
I'VE DONE EVERY THING I KNOW TO DO  
AND THE DUMB THING STILL WONT START



THEN A LITTLE NEIGHBOR GIRL CAME OUT TO PLAY  
AND LOOKED UPON THE DASH  
SIR, I THINK I SEE YOUR PROBLEM  
YOU'RE ONLY OUT OF GAS

Dean

**For Sale:** 1931 Ford Mod A Deluxe 4 door sedan original outside except for new top and top trim, new running-board rubber, and replaced left front fender. 5 new tires[spare on right fender], original type luggage rack. A Texas car with no body rust-out, but there is some minor surface rust on various parts of the body as all paint is original. New Lebaron original type mohair interior, but still original paint on dash & door surrounds. Motor has been rebuilt using bearing inserts. This car is a great driver as is, but its restoration can inexpensively be finished. Car is in Illinois. Please call or email Jim Bequette 646-261-6479, jwbequette@yahoo.com for pictures and complete details. (7/2020)



*This is what was happening 90 years ago.*

| 1930 COST OF LIVING           |                     |
|-------------------------------|---------------------|
| <u>LIVING</u>                 |                     |
| New House                     | \$7,146.00          |
| Average Income                | \$1,973.00 per year |
| New Car                       | \$610.00            |
| Average Rent                  | \$15.00 per month   |
| Tuition to Harvard University | \$400.00 per year   |
| Movie Ticket                  | 25¢ each            |
| Gasoline                      | 10¢ per gallon      |
| United States Postage Stamp   | 2¢ each             |
| <u>FOOD</u>                   |                     |
| Granulated Sugar              | 65¢ for 10 pounds   |
| Vitamin D Milk                | 56¢ per gallon      |
| Ground Coffee                 | 46¢ per pound       |
| Bacon                         | 25¢ per pound       |
| Eggs                          | 15¢ per dozen       |
| Fresh Ground Hamburger        | 13¢ per pound       |
| Fresh Baked Bread             | 9¢ per loaf         |

| 1930 NATIONAL NEWS  |
|---|
| The first unemployment census is conducted.                         |
| The first of four heads on Mt. Rushmore unveiled by Gutzon Borglum. |
| The Veterans Administration is established.                         |
| The population of the United States is 123,202,624.                 |
| The "Blondie" comic strip begins publication.                       |
| The Chrysler Building in New York City is completed.                |
| Frozen foods are sold commercially for the first time.              |



### Videos Available to Our Members

Most available on VCR  
and some on DVD  
Roadside Troubleshooting  
(new)

Jewelry of the Model A Era (new)  
How To Stop On a Dime  
Gennin Along  
Carbs & Carbos  
Flasher (turn signals)  
Timing the Ignition  
Tillotson Carburetors  
Dial D for Distributor  
Electrical Seminar '87 Hargrave

#### Other Model A Titles

Kansas City (Movie)  
2000 Hillclimb Weston  
Yokahama Model A  
Picacho Peak Hill Climb 2000  
The New Ford Model A  
Ford Motor Co. 1928  
1995 Great North American Race  
Mid American Regional  
Mafca Regional meet 89  
Mafca Regional Meet 87  
OLD Cars, Creston 35 ford,  
87 reg, Atch Flyin

#### Other Cars

1935-36 Fords  
1932 V8  
Ford at the Races  
  
See Ken Coleman 913-631-2752

www.gaslightauto.com  
800.242.6491

Urbana, Ohio

**Gaslight Auto Parts**  
since 1962

**1909-48 Antique FORD  
Parts & Accessories**  
Model A, T, & V-8 Parts **FREE** Catalog

**800.242.6491**  
www.gaslightauto.com

**Classic Motor Sales, LLC.**

**J.B. Hodgdon**  
Classics to Current Models  
Office: (913) 362-2436  
Mobile: (913) 205-8448  
Email: [jb@hodgdon.com](mailto:jb@hodgdon.com)

6436 Vista Drive  
Shawnee, Kansas 66218

**BUY - SELL  
TRADE**

0083 144 VAD



### Model A Ford Restoration - Repair

Ron Guenther  
 Complete restoration 1327 Kansas  
 Repair Leavenworth, KS 66048  
 Paint (913) 682 - 2545  
 Interiors

Member MAFCA Since 1981

### A-Z Model A Parts - Zanes

Ron and Sondra Kester, Owners  
 787 Central Street  
 Glade, Kansas 67639  
 Phone: 785-543-6729  
 e-mail: 2officegirls@ruraltel.net

**EVERYTHING FROM A TO Z!**

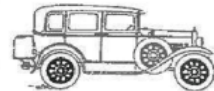


**FREE CATALOG**  
\$10.00 Outside the U.S.



**888-262-5712**  
snydersantiqueauto.com

**THE WORLD'S LARGEST SUPPLIER OF 1909-31 FORD PARTS!**



### "A" REPAIR SHOP

**BOB HESS**  
 12731 CHERRY STREET, KANSAS CITY 64145  
 816-941-4101 Cell: 816-668-3902

SERVICE - REPAIRS - UPGRADES AND COMPLETE RESTORATION  
OVER 20 YEARS EXPERIENCE - MAFCA CERTIFIED MASTER JUDGE

## BRATTON'S ANTIQUÉ AUTO PARTS



800-255-1929 Phone  
[www.brattons.com](http://www.brattons.com)  
 800-774-1930 Fax  
 1606 Back Acre Circle  
 Mount Airy, MD 21771

Your source for Quality Model A Ford Parts since 1976

[www.bobbondart.com](http://www.bobbondart.com) **50 YEARS**



- Graphics
- Lettering
- Pinstriping
- Airbrushing
- Flames
- Gold Leafing
- Logo Designing
- Automotive Art

25812 NE Colbern Road Lee's Summit, MO  
**816-554-1800 1-800 BOB BOND**

**Mike's "A" Ford-able Parts**  
**Mike Butcher** 

124 Model A Drive, Maysville, GA 30558  
 email: [mike@mikes-afordable.com](mailto:mike@mikes-afordable.com) - [www.mikes-afordable.com](http://www.mikes-afordable.com)  
 Fax: 706 652 2492 - Phone: 706 652 3866  
 1 888 TRY MIKE (879 6453)



Specialising in 1928 - 1931 Model A Ford Parts

**TUDOR AND COUPE OWNERS, REJOICE**



**POCKET T-SHIRTS HAVE ARRIVED!**

**IN HANDSOME BLUE OR GRAY**



**\$18 (117 NO POCKET) PLUS SHIPPING**  
 ADD 13 FOR XXL

**ORDER YOUR POCKET-T TODAY!**

To Order: [www.MAFCA.com](http://www.MAFCA.com) or 1-866-379-3819

SMALL DESIGN ON FRONT  
LARGE DESIGN ON BACK

Join The Model A Ford Club of America

New Membership

Name \_\_\_\_\_
Spouse's Name \_\_\_\_\_
Address \_\_\_\_\_
City \_\_\_\_\_
State \_\_\_\_\_ Zip \_\_\_\_\_
Country \_\_\_\_\_ Telephone \_\_\_\_\_
Permission to publish my telephone number in future Membership Rosters? Yes: \_\_\_\_\_ No: \_\_\_\_\_

~ Membership Benefits ~
The Restorer magazine • Technical Support • Local Chapters • National Meets • Era Fashion Guidelines • "How To Restore" Series • Judging Standards and Restoration Guidelines

Dues per year are
U.S. Membership - \$50
Canada/Mexico Membership - \$60
International Membership - \$70
Make checks or money orders payable to
MAFCA
U.S. Funds Only

Gift Membership

Name \_\_\_\_\_
Spouse's Name \_\_\_\_\_
Address \_\_\_\_\_
City \_\_\_\_\_
State \_\_\_\_\_ Zip \_\_\_\_\_
Country \_\_\_\_\_ Telephone \_\_\_\_\_
Permission to publish my telephone number in future Membership Rosters? Yes: \_\_\_\_\_ No: \_\_\_\_\_

For Credit Card Orders ~ Visa / MasterCard (circle one)
Card Number: [ ]
Exp. Date: \_\_\_\_\_
Signature: \_\_\_\_\_
\_\_\_\_\_ Membership Only \_\_\_\_\_ Membership + Initiation Package

Return this form and payment to:
MAFCA
250 South Cypress Street • La Habra, CA 90631-5515

Source: MAFCA Website

Revised November 1, 2017

Optional Initiation Package
For New Members Only
1 - Back Issue of The Restorer
1 - MAFCA Lapel Pin
1 - MAFCA Decal
1 - Name Badge
Only \$10 extra



PLAIN OL' A'S MODEL A FORD CLUB
NEW AND RENEWAL MEMBERSHIP APPLICATION

Last Name: \_\_\_\_\_ Home Phone: \_\_\_\_\_
First: \_\_\_\_\_ Cell Phone: \_\_\_\_\_
Spouse: \_\_\_\_\_ Email: \_\_\_\_\_
Address: \_\_\_\_\_
City: \_\_\_\_\_ State: \_\_\_\_\_ Zip: \_\_\_\_\_

Has any of the above information changed since the last Roster? \_\_\_\_\_

Model & Year of Model A's: \_\_\_\_\_

Insurance Company: \_\_\_\_\_ Policy # \_\_\_\_\_

Are you interested in Touring? \_\_\_\_\_ Seminars? \_\_\_\_\_ Need Help with your Model A? \_\_\_\_\_

Are you a member of MAFCA? \_\_\_\_\_ MARC? \_\_\_\_\_ How long have you owned a Model A? \_\_\_\_\_

\_\_\_\_\_ New Member (dues are \$8.00 plus \$1.00 for each month remaining in the year)

\_\_\_\_\_ Renewal (dues are \$20.00 per year and DUE BY DECEMBER 31)

\_\_\_\_\_ Would you be willing to serve refreshments at a membership meeting?

Please send this application and your check payable to Plain Ol' A's to:

Bob Hess, Treasurer
12731 Cherry Street
Kansas City, MO 64145

Do you want your newsletter sent to you by email \_\_\_\_\_ or by regular mail? \_\_\_\_\_

If by email, be sure to include your email address.

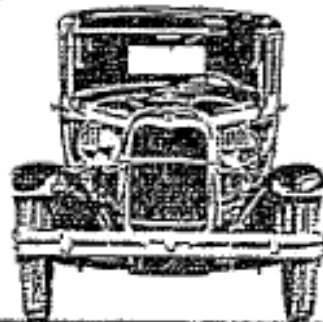
Email: \_\_\_\_\_

FIRST CLASS MAIL

4600 MADISON, STE. 600  
KANSAS CITY, MO 64112-3031



SHADE TREE MECHANIC



PLAIN OL' A'S

MODEL A FORD CLUB  
KANSAS