



Lockgate Stoves Limited

Product Catalogue



Supplier of Refleks stoves, flues and parts.

Refleks



Lockgate Stoves Limited
Long Eaton, Nottingham
0115 9988 305 / 07545 394 384
info@lockgate.com
www.lockgate.com

Lockgate-Refleks 2000 Stove Range

Visible Flame Marine Diesel Stove

Visible Flame Cast Iron Hotplate <small>(for 'K' models)</small>	Fiddle Rail <small>(for 'K' models)</small> No electrical power required	Brass or Copper Options Variable heat output
--	---	---




MODEL	HEAT OUTPUT (KW)			Fuel consumption (l/Hr)		Flue (mm)	Cowl (mm)
	min	max	Water Rating	min	max	Interior	& Ext Flue
2000 KT	0.9	4.2	—	0.18	0.54	90	90
2000 KVT	0.9	4.2	2.8	0.18	0.54	90	90
2062 M	0.5	2.4	—	0.12	0.36	90	90
2062 MK	0.55	3.5	—	0.15	0.48	90	90
2066 M	0.5	1.6	—	0.12	0.3	70	70
2066 MK	0.5	1.6	—	0.12	0.3	70	70
2060 M	0.9	5.8	—	0.18	0.8	90	90
2060 MK	0.9	5.8	—	0.18	0.8	90	90

Lockgate-Refleks 2000 KVT is fitted with a Stainless Steel Circular Back Boiler

Refleks Stove

Oil Stoves for Ship's Use

Range Sizes		Offshore & Inland Waterways versions
1.6kw, 2.4kw 3.5kw, 4.2kw & 5.8kw		No electrical power required
Variable heat output		Available with Water Heating Coil
Cast Iron Hotplate Option		Window fitted option
Brass & Copper Finish option		

The Refleks range of stoves are simple, robust and reliable.

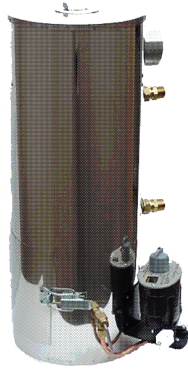
The Refleks is respected by the crews of commercial fishing boats and yachtsman around the world, who rely upon them for warmth in the most adverse of conditions.

Constructed entirely of stainless steel for long life in both coastal and inland waters, this is the product that sets the standard in boat stoves.

The technical partnership between Refleks & Lockgate has developed Inland Waterways versions of the Refleks stove to operate on the short flue requirement of the Narrowboat without compromise to efficiency and reliability.

Cold Furnace (Boiler)Stove

Lockgate-Refleks 66MV & 2000MVT



66MV



2000MVT

MODEL	HEAT OUTPUT (KW)			Fuel consumption (l/Hr)	
	min	max	Water Rating	min	max
66MV	0.5 kw	1.6 kw	5459 btu	0.12	0.3
2000MVT	0.9 kw	4.2 kw	14331 btu	0.18	0.54

DIMENSIONS & CONNECTIONS						
Height	Diame-ter	Flue	Air Inlet	Water Connec-tions	Water Connec-tions	Fuel Connec-tions
550 mm	240 mm	70 mm (Insulated option)	70 mm (Std)	15 mm	At Back	8 mm
520 mm	265 mm	90 mm (Insulated option)	90 mm (Optional)	3/4 BSP	As Drawing Page 6	8 mm

Refleks Stove

Oil Stoves for Ship's Use

MODEL	Heat Output (KW)		Fuel consumption (l/Hr)		Flue (mm)	Flue Entry
	max	Water Rating (BTU)	min	max		
66M	1.6	-	0.12	0.3	70	Top
66MK	1.6	-	0.12	0.3	70	Back
66MS	1.6	3753	0.12	0.3	70	Top
66MKS	1.6	3753	0.12	0.3	70	Back
62M	2.4	-	0.12	0.36	90	Back
62MK	3.5	-	0.15	0.48	90	Back
62MSK	3.5	5459	0.15	0.48	90	Back
60M	5.8	-	0.18	0.8	90	Back
60MK	5.8	-	0.18	0.8	90	Back
61MSK	5.8	13649	0.18	0.8	90	Back

The Inland Waterways version is produced by Lockgate Stoves and differs from the standard Refleks stove in the flue and control configurations. On some models, an oil regulator specifically for inland waterway craft is fitted.

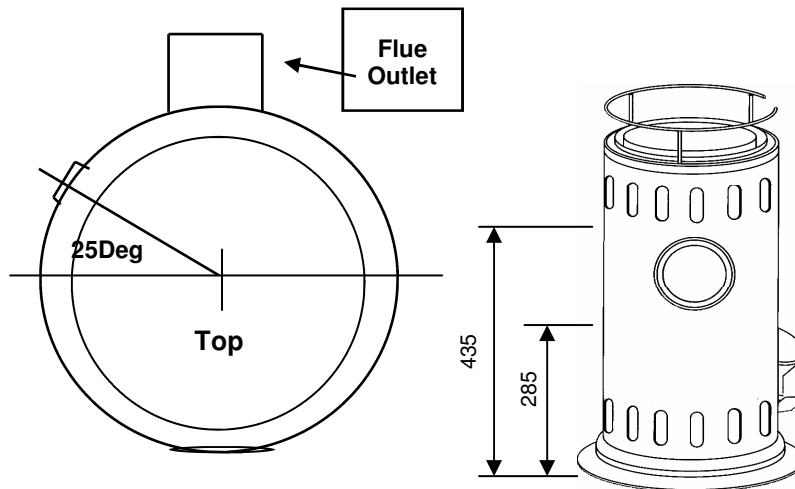
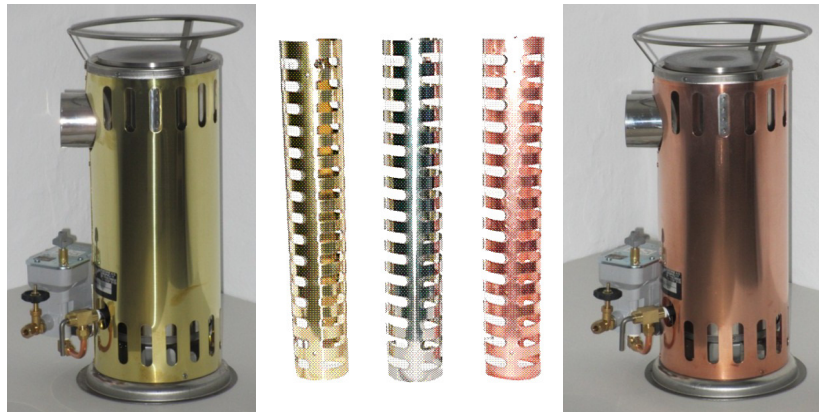
The downdraft caps used with Refleks Stoves for narrowboats have been specially designed by Lockgate for this application.

Colour Options

Colour options are available for the Refleks range.

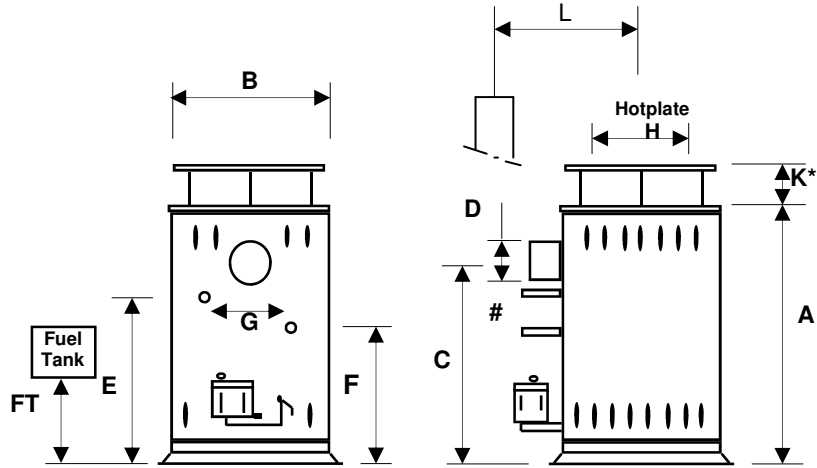
Durable stainless steel comes as standard.

Solid Brass and Solid Copper bodies are available complete with Solid Brass and Solid Copper flue guards, with their practicality of protection against the hot flue pipe and two-tone contrast of colour, these options are a good addition to any vessel.



2000KVT & MVT Boiler Connections

Lockgate-Refleks / Refleks Dimensions

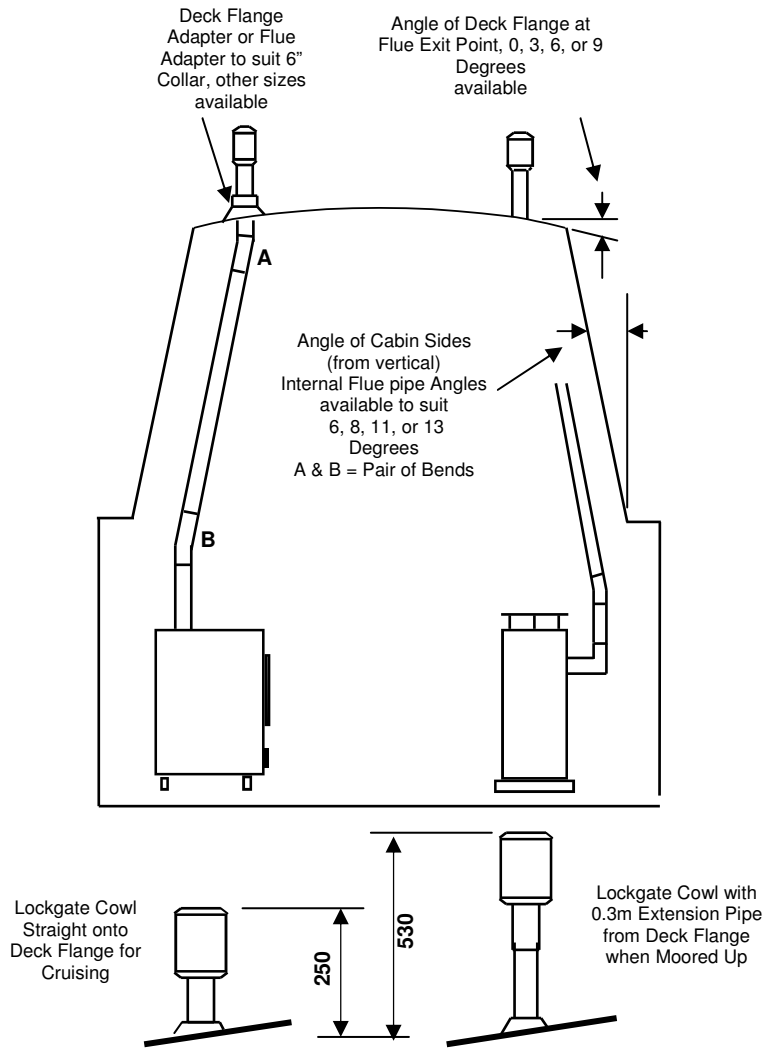


MODEL	A	B	C	D Dia	E	F	G	H Dia	FT Min	K	L
66M	420	165	-	70	-	-	-	-	265	-	-
66MK	420	165	345	70	-	-	-	135	265	30	200
66MS	420	165	-	70	375	245	160	-	265	-	-
66MKS	420	165	345	70	375	245	160	135	265	30	200
2062 / 62M	440	260	345	90	-	-	-	-	265	-	230
2062 / 62MK	440	260	345	90	-	-	-	145	265	65	230
2000 KVT/MVT	520	260	430	90	435*	285*	-*	145	265	65	230
2000KT	500	260	430	90	-	-	-	145	265	65	230
62MSK	440	260	345	90	385	265	170	145	265	65	230
60M	535	320	420	90	-	-	-	-	290	-	270
60MK	535	320	420	90	-	-	-	185	290	85	270
61MSK	630	320	525	90	575	345	200	185	290	85	270

Water Coil Connections, 66 – 3/8 BSP & 62/61 - 1/2 BSP Male,
2000KVT - 1/2" BSP Female Hot Plate fitted on models with "K" code only.
Note: * 2000KVT Back Boiler connection diagram, Page 6.

Dimension "L" Centre of Stove to centre of flue. This can be reduced by 50mm using a short flue knee bend for all flues.

Stove and Flue Pipe Component options 70mm & 90mm Narrowboat Flue Systems.



A full flue kit consists of 2xAngled bevel pipe, 1x1.0m straight pipe, 1xDecroation ring, 1xDeck Flange, 1x0.33m straight extension pipe, 1xLockgate cowl and 1xRight-angled bevel or adaptor where applicable. Flue guards are a recommended optional extra.

Typical Flue Component Menu		
Radiant Stove	Radiant Stove	Convection Stove
Cast Iron	Cast Iron	Lockgate-Refleks Style
Lockgate Cowl	Lockgate Cowl	Lockgate Cowl
0.3 Metre Pipe	0.3 Metre Pipe	0.3 Metre Pipe
	6" Adaptor	
Deck Flange	6" Cast Iron Collar	Deck Flange
Decoration Ring	Brass Décor Ring	Decoration Ring
Angle Bend (1 of Pair)	4.5 " Dia + 5' Pipe	Angle Bend (1 of Pair)
1.0 Metre Pipe		1.0 Metre Pipe
Angle Bend (1 of Pair)		Angle Bend (1 of Pair)
Stove Collar Adapter	Stove Collar Adapter	90 Degree Bend
Flue Guard (opt)		Flue Guard (opt)
Stove	Stove	Stove



Deck Flanges



Cast Iron Collar



D/Flange Cover



Flue Bends



Down Draft Cowls

Notes

Notes

Lockgate Stoves Limited

Manufactures and suppliers of Marine Diesel Heaters

www.lockgate.com

info@lockgate.com

Tel: 0115 99 88 305

Mob: 07545 394384



Refleks

Reg Office: Norfolk Road Long Eaton NG10 4RA
Stores Address: B.E.Webbes. 102 Wilsthorpe Rd Long Eaton NG10