



Email: info@lockgate.com

Website: www.lockgate.com

102 Wilsthorpe Road,

Long Eaton,

Nottinghamshire

NG10 3JW

Landline: 0115 99 88 305

Mobile : 07545 394 384



Contents

Introduction_____	Page 3
The Stoves_____	Page 4
- 66M Range _____	Page 5
- 62M Range _____	Page 6
- 2000 Range _____	Page 7
- 60M/61M Range _____	Page 8
- Heating Variations _____	Page 9
- Fresh Air Intake _____	Page 10
- Flue pipe_____	Page 11
- Cowls _____	Page 12
- Deck Flanges & Fittings _____	Page 13
- Optional Extras _____	Page 14-15



Introduction

Refleks have been producing oil/diesel stoves for over 60 years and have gained a great following and name in that time as an industry leader. Supplying stoves for everything from North Sea fishing vessels to inland canal barges, they have become known for their efficiency and reliability.

We have worked with Refleks for over 20 years and in that time have gained unrivalled knowledge and experience of the products, their workings and overall best practice. This has led us to be the UK's leading supplier and installer of Refleks Stoves.

Over recent years, we have found Refleks have become more and more popular, with people moving away from the traditional multi-fuel and wood burners due to the mess, fuss and space they take up.

Due to their modern, minimalist look, the Refleks are a fantastic option for new build or newly re-fitted boats, the stainless steel option works great for those customers who have more chrome fixtures and fittings, whereas the copper gives that funky centre piece vibe for those who like to be a little bit different, or those who want to pay homage to the traditional style boats by going for the brass.

We are always on hand for any questions you have or recommendations you may need help with.

Best wishes,

Lockgate

WHY REFLEKS?

No mess or dust from wood or coal

-

No storing of wood and coal

-

Can be gravity fed so no need for
electrics

-

Variable heat that can be turned up
and down via the regulator

-

Convactor style heating that is great
at circulating air and reducing
condensation onboard

-

Option of copper heating coil or
back boiler for water/radiator
heating

-

Can be ran on Diesel or Kerosene

-

Safe to be left running to maintain
heat

-

Different sized models and outputs
to best suit each boat

-

Self-serviceable



The Stoves



Model Variation Key

M = Marine stove

K = Hot plate

S = Copper Heating Coil

F = Fresh Air Intake

T = Thermocouple

V = Back-boiler

W = Bulkhead mounted

MV = Cold Furnace Model

20 = Viewing Window

The Stoves come in stainless steel as standard but have the option of coming in copper or brass for an additional cost

There are two different regulator options;

TOBY DVR Land Control – This is the most popular controller and is for use on inland waters.

TOBY DVR Marine Control – This is for use on off-shore vessels and comes fitted with an overflow pipe to allow for use when a ships movement is more prominent.

66M Range

The 66M is the smallest stove we offer. It has a maximum heat output of up to 1.6KW.

If you opt to have the stove without the hot plate, the flue comes directly out of the top, which is great for saving on space. This is the only model that has this option. Alternatively, if you opt to have the hot plate, the flue comes out of the rear of the stove on a 90 degree knee bend.

As well as being used for smaller boats, boatman's cabins and cruisers, the 66 is suitable for caravans/campervan conversions too.

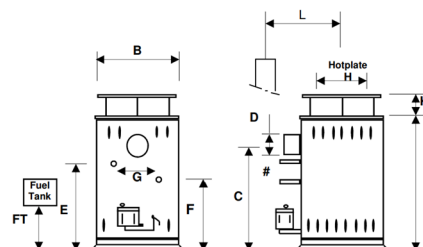
As with most of the stove models, there are additional extras you can opt for depending on preference. i.e. viewing window, hot plate and fiddle rail, copper heating coil and fresh air intake.

This model is also available as a bulkhead mounted stove, to allow for further space saving, or as a cold furnace stove, which has a fully insulated body to allow for radiator/water heating only without heating the space itself. This is a great option if wanting to put the stove within a cupboard or limited space.



Pictured above: 2066M in Stainless steel

MODEL	A	B	C	D Dia	E	F	G	H Dia	FT Min	K	L
66M	420	165	-	70	-	-	-	-	265	-	-
66MK	420	165	345	70	-	-	-	135	265	30	200
66MS	420	165	-	70	375	245	160	-	265	-	-
66MKS	420	165	345	70	375	245	160	135	265	30	200



Note: Dimension "L" Centre of Stove to centre of flue. This can be reduced by 50mm using a short flue knee bend for all flues.

Water Connections – 66MS 3/8" BSP Male

Maximum Heat Capacity (m³)

With insulation = 23m³

Without insulation = 14m³

Model	Heat Output (KW)			Fuel Consumption (l/Hr)		Flue (mm) Interior	Cowl (mm) & Ext Flue	Flue Entry
	Min	Max	Water Rating (BTU)	Min	Max			
66M	0.5	1.6	-	0.12	0.3	70	70	Top
66MK	0.5	1.6	-	0.12	0.3	70	70	Back
66MS	0.5	1.6	3753	0.12	0.3	70	70	Top
2066MK	0.5	1.6	-	0.12	0.3	70	70	Back

62M Range

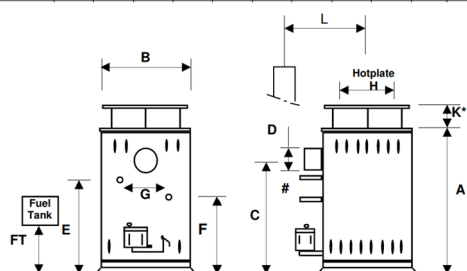
The 62M is the only stove model that has the option of different maximum outputs depending on whether you have the hot plate or not.

The 62M which is the standard model without a hot plate, has a maximum heat output of up to 2.4KW.

The 62MK which is the model with the cast iron hot plate, can be rated to a higher maximum output of up to 3.5KW.

This model has a good variable output range, going down to a minimum of 0.55KW, it allows a lower output for those spaces that require it.

MODEL	A	B	C	D Dia	E	F	G	H Dia	FT Min	K	L
2062 / 62M	440	260	345	90	-	-	-	-	265	-	230
2062 / 62MK	440	260	345	90	-	-	-	145	265	65	230



Note: Dimension "L" Centre of Stove to centre of flue. This can be reduced by 50mm using a short flue knee bend for all flues.

Water Connections – 62MS 1/2" BSP Male



Pictured above: 2062MK in Stainless Steel

Maximum Heat Capacity (m³)

With insulation = 35m³

Without insulation = 21m³

Note: The above is based on the 62M without the cast iron hot plate. The 62MK has slightly greater heating capabilities

Model	Heat Output (KW)			Fuel Consumption (l/Hr)		Flue (mm) Interior	Cowl (mm) & Ext Flue
	Min	Max	Water Rating (BTU)	Min	Max		
62M	0.5	2.4	—	0.12	0.36	90	90
62MK	0.55	3.5	—	0.15	0.48	90	90
62MSK	0.55	3.5	5459	0.15	0.48	90	90
2062M	0.5	2.4	—	0.12	0.36	90	90
2062MK	0.55	3.5	—	0.15	0.48	90	90

2000 Range

This is our most popular stove model for narrowboats as it is the closest in size and output to a multi fuel/wood burner.

The 2000KT/KVT come as standard with a viewing window, hot plate and fiddle rail.

When purchased through Lockgate, we pre-fit the 2000 with a thermocouple and flame failure device. This is the only model we offer this on due to it having a shallower burner pot than the other marine style stoves.

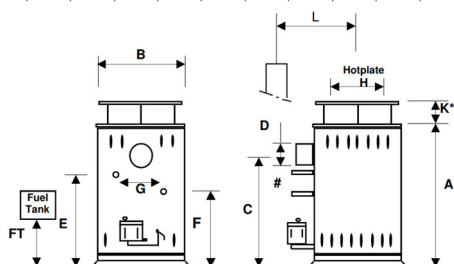
Rather than a copper heating coil, the 2000 has the option of coming with a stainless steel back boiler for water heating and a clear view through the window.

Similar to the 66, there is also a fully insulated version of the 2000 which heats water only. This is the 2000MVT. You will find additional information about this in the 'Heating Variations' section on Page 9.



Pictured above: 2000KT in Stainless steel

MODEL	A	B	C	D Dia	E	F	G	H Dia	FT Min	K	L
2000 KVT/MVT	520	260	430	90	435*	285*	-*	145	265	65	230
2000KT	500	260	430	90	-	-	-	145	265	65	230



Note: Dimension "L" Centre of Stove to centre of flue. This can be reduced by 50mm using a short flue knee bend for all flues.

*Water Connections – 2000KVT - 1/2" BSP Female

Maximum Heat Capacity (m³)

With insulation = 70m³

Without insulation = 40m³

Model	Heat Output (KW)			Fuel Consumption (l/Hr)		Flue (mm)	Cowl (mm)
	Min	Max	Water Rating (BTU)	Min	Max	Interior	& Ext Flue
2000KT	0.9	4.2	—	0.18	0.54	90	90
2000KVT	0.9	4.2	9238	0.18	0.54	90	90

60/61 Range

The 60/61 models are some of the larger models we offer, with a maximum heat output of up to 5.8KW. We find these models best suited to widebeams, larger narrowboats/vessels and bigger radiator systems.

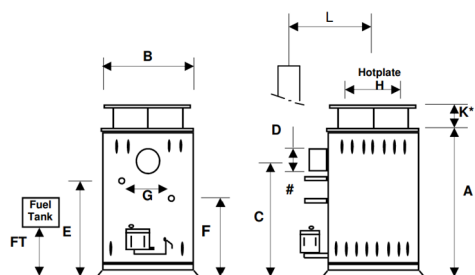
The 61MS is fitted with a copper heating coil for radiator/water heating, whereas the 60M is the air heating model only.

Due to its size, you are able to have a window with the 61MSK. As per the picture on the right hand side, you will be able to see part of the copper coil through the window.



Pictured above: 2061MSK in Copper

MODEL	A	B	C	D Dia	E	F	G	H Dia	FT Min	K	L
60M	535	320	420	90	-	-	-	-	290	-	270
60MK	535	320	420	90	-	-	-	185	290	85	270
61MSK	630	320	525	90	575	345	200	185	290	85	270



Note: Dimension "L" Centre of Stove to centre of flue. This can be reduced by 50mm using a short flue knee bend for all flues.

*Water Connections – 61 - 1/2 BSP Male

Maximum Heat Capacity (m³)

With insulation = 83m³

Without insulation = 50m³

Model	Heat Output (KW)			Fuel Consumption (l/Hr)		Flue (mm) Interior	Cowl (mm) & Ext Flue
	Min	Max	Water Rating (BTU)	Min	Max		
60M	0.9	5.8	—	0.18	0.8	90	90
60MK	0.9	5.8	—	0.18	0.8	90	90
61MS	0.9	5.8	13649	0.18	0.8	90	90
61MSK	0.9	5.8	13649	0.18	0.8	90	90

Heating Variations

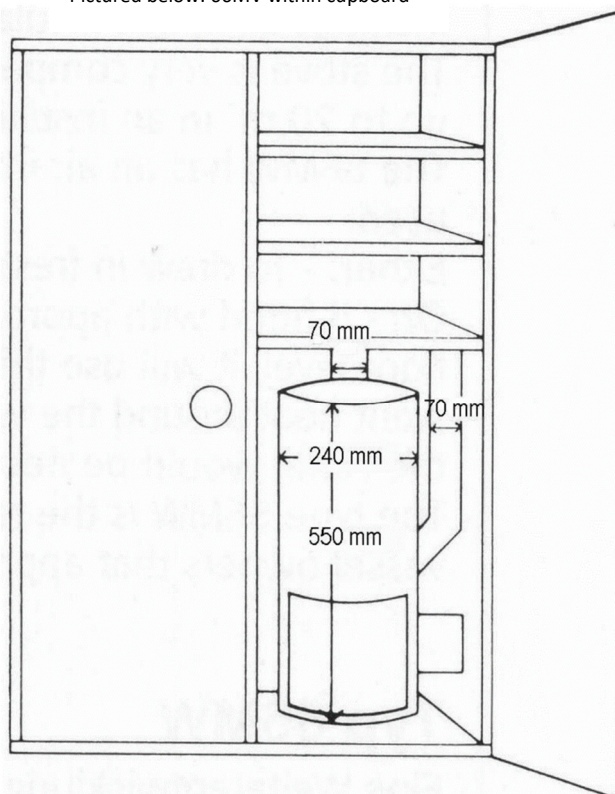
MV Range – ‘Cold Furnace’

This is the fully insulated range on offer that heats water/radiators only and does not give heat off into the cabin. These can be placed within cupboards when used with insulated internal flue which will give off an ambient heat and can create an airing cupboard effect, which makes great additional use of the space.

66MV – This is the smaller model and comes with a copper heating coil. (Dimensions are as mentioned in the ‘66 Range’ on page 5)

2000MV – This is the larger of the two and comes with a stainless steel back boiler. You are able to have this model with a window if so desired for an additional cost. This model does not have the option of coming with a hot plate due to being fully insulated. (Dimensions can be found in the ‘2000 Range’ on page 7).

Pictured below: 66MV within cupboard



MW Range – ‘Bulkhead Mounted’

66MW – This is the only bulkhead mounted stove option and gives a great alternative to the standard stove set up.

It gives the option of heating the desired area without taking up valuable floor space. This model comes pre-fitted with a ‘Fresh Air Intake’ to draw air from the cabin or the outside. (More information on this can be found on page 10).



Picture above: 66MW in Stainless Steel

Model	Height	Width	Depth
66MW	370mm	170mm	280mm

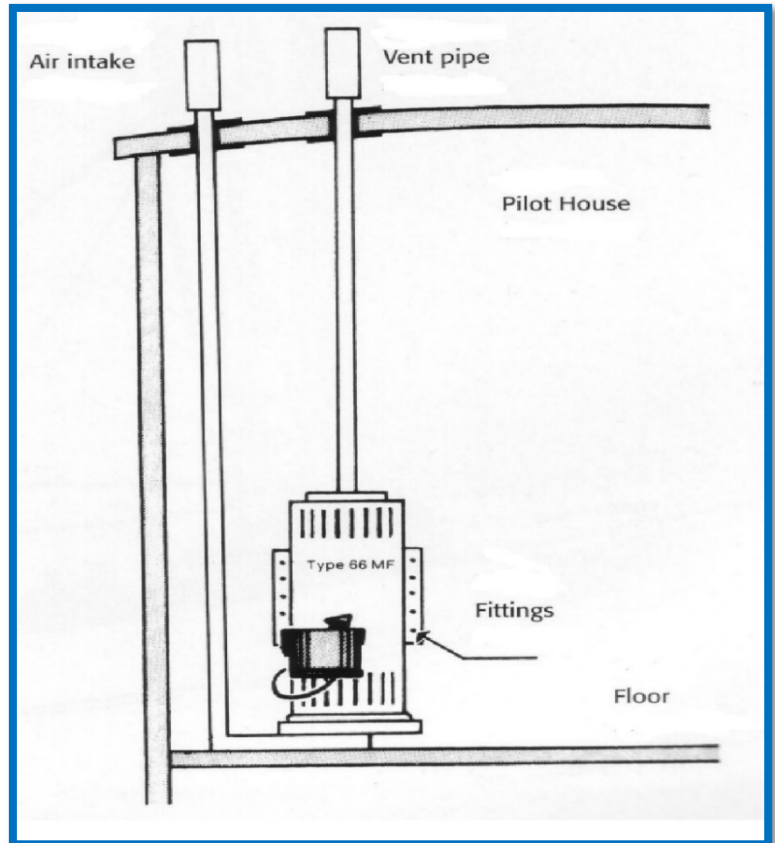
Fresh Air Intake

This is mainly used for balanced flue systems, where you draw air from the outside rather than the cabin.

This is great for shorter flue systems and off-shore craft as it deals better with high winds and allows for minimal ventilation as it does not draw any air from the cabin.

We find this to be popular with campervans and campervan conversions when used to draw air from underneath/the side of the van.

This is available to all of the stove models.



Flue Pipe

Depending on the layout and design on your boat will depend on the best flue kit to suit your needs.

We have two main flue kit types, a Flue kit including Bevels and a Straight flue kit.

If other elements or specifics are required, these can be itemized to ensure you are getting exactly what you require.

Bevels are available from 4 to 45 degrees.

We offer a unique delivery service whereby we will deliver the stove to the boat ourselves and place the stove and flue pipe in the desired location, ensuring you are happy with the look and positioning of it prior to leaving you with all the necessary components to get it installed.

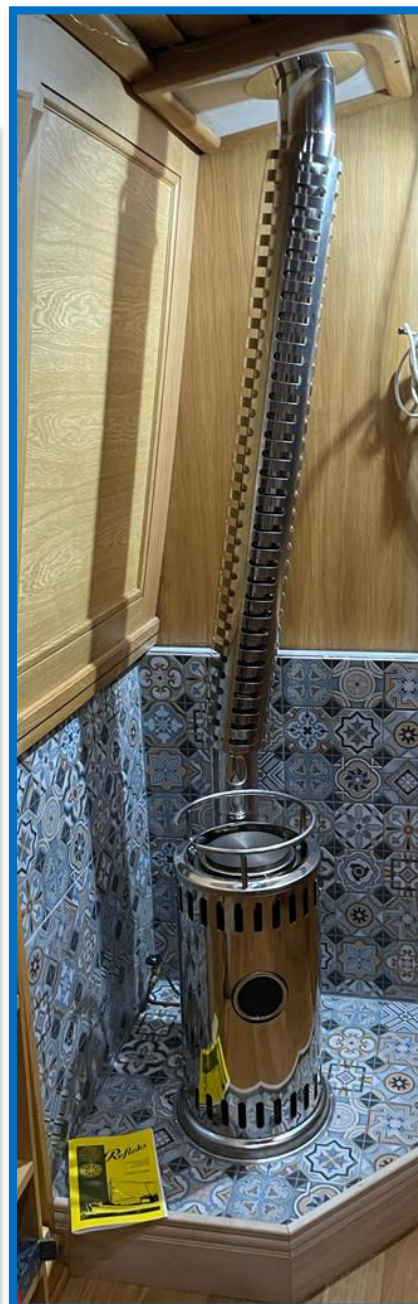
We also offer insulated flue pipe, which can be used internally if placing the stove within a cupboard or confined space. Sections of insulated flue can also be used externally to help protect wheelhouses or for use in off-shore waters.

Our standard single skin flue pipe comes in SS304 shiny stainless steel whereas insulated double skin flue usually comes in higher grade SS316 non-shiny stainless steel.

Both have the option of coming in either SS304 or SS316 depending on preference.



Pictured above: 2000KT in Stainless Steel with Straight flue kit



Pictured above: 2000KT in Stainless Steel with Flue kit including Bevels

Single Skin Flue – Available in 70mm, 90mm or 114mm

Insulated Flue – Available in 70/90mm, 90/114mm, 114/135mm

*Dependant on each stoves flue as detailed on pages 5-9

*Adaptors are available to reduce flue diameter if required

Cowls

Lockgate Downdraft Cowl

This is the standard cowl that comes included within our flue kits.

Designed specifically for diesel stoves and use on inland waters.

A 0.3m straight pipe comes included in our flue kits to be used as the external chimney pipe, the cowl then fits on top of this.



H-type Cowl

Used mainly for off-shore vessels, the H-type cowl is designed to deal with stronger winds and more adverse weather conditions. This makes it a great option for those customers who are moored in windier locations.

Due to cowls being interchangeable, customers can opt to have both and swap these as desired.



Deck Flanges & Fittings

Deck flanges are available in varying angles mainly from 0 to 12 degree.

Greater degree angles are available if required, as well as non-welded deck flanges if the angle is unknown or in-between sizes.

The angles come pre-fitted with a trim/skirt section for use with wood or plastic boats. These can be removed if being used with steel boats.

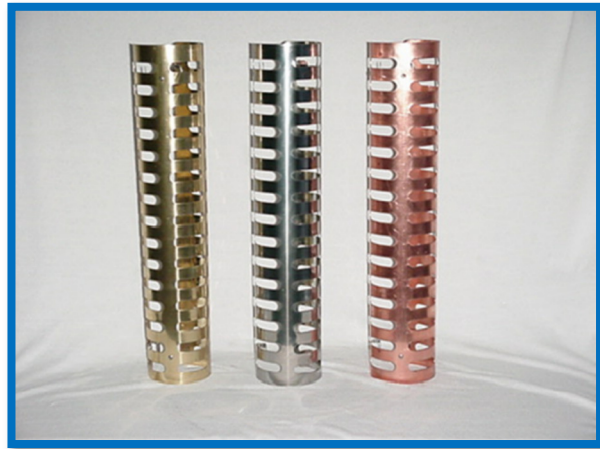
For customers who are replacing an existing stove i.e. multifuel burner, we have deck flanges to suit existing cast iron collars which are available in different diameters. This means the existing cast iron collar can remain in the roof to avoid any damage to paintwork or additional works required to remove this.



Optional Extras

Flue Guard

These are optional but are a great extra to have to protect from touching the flue by mistake. They also really set the flue off aesthetically and come in either stainless, copper or brass to match the stoves too.



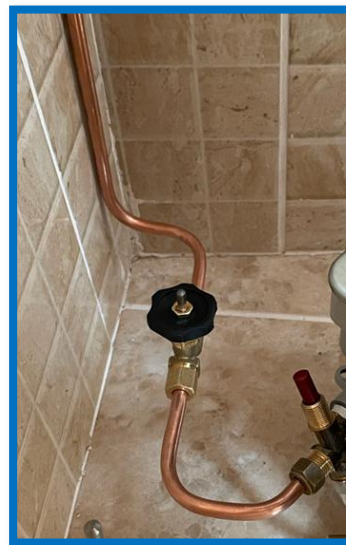
Deck Flange Cover

Essentially as stainless steel 'weather cap', this is placed over the deck flange fitting when the stove is not in use. This helps to prevent water or debris getting down the flue.



Safety Fire Valve

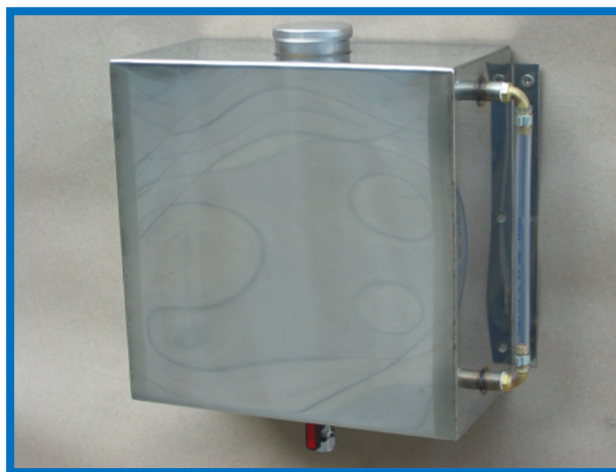
An essential extra to the stove system, this is a safety measure that gets installed within the fuel line in the vicinity of the stove and has an element inside that will melt and cut off the fuel should there be a fire around the stove. It also doubles up as a stop cock.



Refleks Diesel Tanks

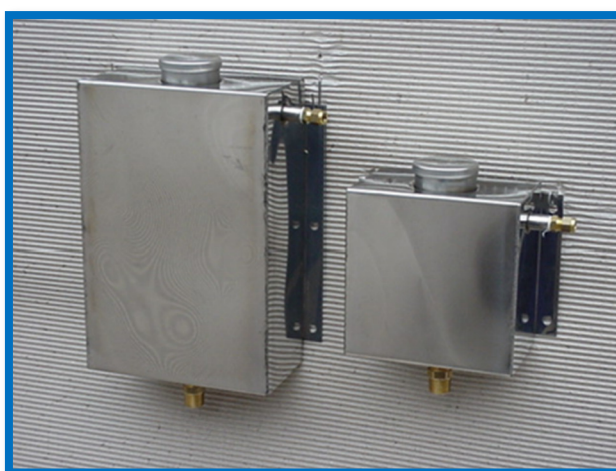
These are available from Refleks in 10L, 20L or 50L Capacities. They are made from Stainless steel and all have the option of coming pre-fitted with sight measure.

They come fitted with a breather and filler cap as standard.



Expansion Tanks

Available in 2.5L or 5L capacities. These come in stainless steel the same as above.



Custom Tanks

Custom made tanks are available if required. These come in mild steel, painted black and pre-fitted with a ½" BSP breather connection. A hole for the filler cap can be pre-cut if the desired location is known or it can be cut on site if not.

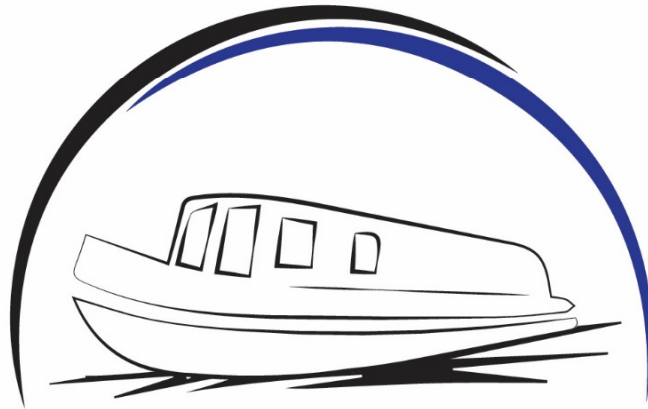
These come dye-tested.

Maintenance Trays

Commonly referred to as a 'drip tray', these are better described as a maintenance tray as they are only required when you are completing maintenance on the stove, fuel line and regulator. This is due to the regulator holding a small reservoir of fuel.

These come pre-fabricated in stainless steel from Refleks and are available in different sizes depending on the stove. They are also available made to customer specification if required.





LOCKGATE
S T O V E S