

2024

SRI LANKA

BELLA VITA

8 DAYS / 7 NIGHTS

DESTINATIONS

KANDY
NUWARAELIYA
ELLA
SIGIRIYA
UDAWALAWA
DHAMBULLA
PINNAWALA
GALLE
COLOMBO



Collaboration of Jetara & Isola

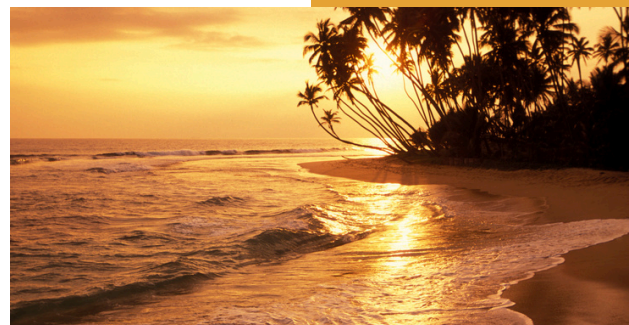
Let's Travel Together

Jetara Travels, a premier travel agency in Sri Lanka, and Isola Travels, a renowned travel company from Italy, are thrilled to announce their new partnership. This collaboration marks a significant step in delivering exceptional travel experiences tailored for European travelers eager to explore the enchanting island of Sri Lanka.

With Jetara's local expertise and Isola's deep understanding of European traveler preferences, this partnership is designed to offer seamless, immersive, and unforgettable journeys. From Sri Lanka's ancient cultural sites and breathtaking highlands to its pristine beaches and rich wildlife, we are committed to curating travel packages that meet the highest standards of comfort, adventure, and personalization.

Together, Jetara Travels and Isola Travels aim to create memories that last a lifetime, ensuring every journey is an inspiring story worth sharing.

We look forward to welcoming European travelers to the wonders of Sri Lanka through this unique collaboration!



CONTACT (JETARA TRAVELS – SRILANKA) CONTACT (ISOLA TRAVELS – ITALY)

+94712295600 (SAJITHA) 00393276598211 (ROSHAN)

WEBSITE WWW.JETARATRAVELS.COM WEBSITE WWW.ISOLATRAVELS.COM

EMAIL JETARATRAVELS@GMAIL.COM EMAIL INFO@ISOLATRAVELS.COM



DETAILED ITINERARY



DAY 01

Arrival and Transfer to Kandy

Upon arrival at Bandaranaike International Airport, you will be greeted and transferred to Kandy. En route, visit a Spice Garden in Matale to discover the rich variety of Sri Lankan spices and their uses in cuisine and medicine. Once in Kandy, check in to your hotel and relax. In the evening, visit the revered Temple of the Sacred Tooth Relic, followed by a captivating cultural dance performance. Spend the night in Kandy, soaking in the serene atmosphere of this heritage city.

Take your time on vacation



DAY 02

Kandy – Sigiriya – Dambulla

Start your day early with a hearty breakfast before heading to the magnificent Sigiriya Rock Fortress, a UNESCO World Heritage Site. Also known as the “Lion Rock,” Sigiriya is an ancient rock fortress and palace built in the 5th century. Ascend to the summit, passing through water gardens, mirror walls, and fresco galleries to enjoy panoramic views of the surrounding landscapes.

After lunch, visit the Dambulla Cave Temple, another UNESCO World Heritage Site. This iconic site comprises five caves adorned with exquisite murals depicting Buddhist art and over 150 statues of the Buddha. The golden Buddha statue at the entrance is a must-see. Spend the evening relaxing in Dambulla, surrounded by the region's tranquil natural scenery.



DAY 04

Nuwara Eliya – Ella

After breakfast, embark on the picturesque train journey to Ella, renowned for its breathtaking views of rolling hills, tea plantations, and lush greenery. In Ella, visit the iconic Nine Arches Bridge, a marvel of colonial-era engineering. Spend the evening strolling through the charming town or relaxing at your hotel, enjoying the serene surroundings.

DAY 03

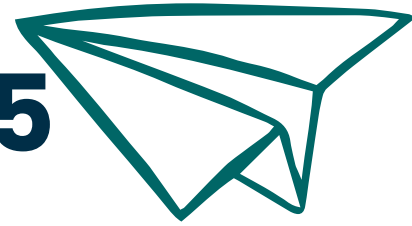
Dambulla – Nuwara Eliya

Leave Dambulla and travel to Nuwara Eliya, often called "Little England" for its cool climate and colonial charm. Along the way, stop at a traditional Sri Lankan village for an immersive experience. Take a bullock cart ride, enjoy a boat ride, and savor authentic Sri Lankan cuisine during your visit. Continue to Nuwara Eliya, stopping at a tea factory and plantation to learn about Ceylon tea production and enjoy a fresh cup of tea. Upon arrival, explore Victoria Park and Lake Gregory before retiring for the night.





DAY 05



Ella

Begin your day with an invigorating hike to Little Adam's Peak, a popular trekking spot that rewards you with panoramic views of tea plantations and valleys. Take your time soaking in the breathtaking scenery. Later, visit the stunning Ravana Falls, a cascading waterfall named after the legendary king from the Ramayana epic.

Spend the rest of the day exploring Ella's vibrant cafes, indulging in some shopping for local crafts, or simply relaxing amidst the serene surroundings. Ella offers the perfect blend of adventure and tranquility for a memorable day.

DAY 06

Ella – Udawalawe – Galle



Set off early from Ella and travel to Udawalawe National Park for an exhilarating wildlife safari. Known for its large population of elephants, the park also provides opportunities to spot deer, crocodiles, and a variety of bird species. Capture stunning photographs and enjoy the natural beauty of this wildlife haven.

After the safari, continue your journey to the historic city of Galle. Check in to your hotel and spend the evening exploring the enchanting Galle Fort, a UNESCO World Heritage Site. Wander through its cobblestone streets lined with colonial-era buildings, boutique shops, and cafes. End your day by watching the sunset over the fort's ramparts, a truly magical experience.

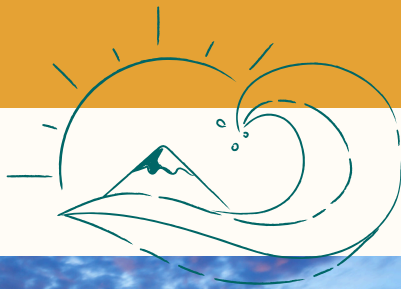


DAY 07

Galle

Spend the morning delving deeper into the history and culture of Galle Fort. Visit its iconic landmarks, including the Dutch Reformed Church, the lighthouse, and the Maritime Museum. Learn about the fort's rich colonial heritage and the fusion of Dutch, Portuguese, and British influences.

In the afternoon, unwind at a nearby beach, bask in the sun, or engage in water activities such as snorkeling or jet skiing. Enjoy a relaxed evening, soaking up the coastal charm of Galle, and savor a delicious seafood dinner to round off your day.



DAY 08



Departure

On your final day, bid farewell to Sri Lanka as you travel to Colombo or directly to Bandaranaike International Airport for your departure. If time allows, enjoy a brief city tour of Colombo, visiting key attractions such as Galle Face Green, Independence Square, and the bustling markets of Pettah. Conclude your journey with wonderful memories of Sri Lanka's culture, nature, and hospitality.

TOUR COST

Per Person in Double
Room *

1162 USD- 2 pax

990 USD- 4 pax

926 USD- 6 pax

887 USD- 8 pax

1546 USD- 10 pax

* Terms & Conditions apply



ACCOMODATION SUMMARY

Day	City	Hotel	Meal
01	Kandy	Queens hotel Kandy	HB
02	Sigiriya	Golden ray Sigiriya	HB
03	Nuwaraeliya	Fort windshire Nuwaraeliya	HB
04	Ella	Morning dew Ella	HB
05	Ella	Morning dew Ella	HB
06	Galle	Thambapanni retreat Galle	HB
07	Galle	Thambapanni retreat Galle	HB

Jetara Travel Package Inclusions

- Accommodation: Stay in a Double or Twin room with breakfast and dinner at selected hotels or equivalent alternatives.
- Transportation: Private luxury vehicle for all internal road travel as outlined in the itinerary, ensuring comfort and ease of movement.
- Chauffeur Guide: The expertise of an English chauffeur guide to assist throughout the journey, enriching the travel experience with local insights.
- Taxes and Fees: All applicable taxes and VAT included in the package, offering complete pricing transparency.
- Guided Experiences:
 - City Tours: Guided tours of Nuwaraeliya ,Galle, Colombo and Kandy for a deeper understanding of Sri Lankan culture and urban life.
- Daily Refreshments: 1 liter of bottled drinking water per person per day to stay refreshed.
- Entrance Fees: Entry fees to **Pinnawala elephant orphanage ,Temple of tooth Kandy ,Royal botanical garden ,Gregory lake,Udawalawa national park entrance and Jeep safari ,Ella train ride,Cultural show kandy , Sigiriya ,Dhambulla Cave temple and turtle hatchery Galle**
- Meals: 8 Srilankan Special Lunches at local Restaurants

Jetara Travel Package Exclusions

- Personal Expenses: All expenses of a personal nature, including laundry, telephones, beverages, and any other personal services.
- Unlisted Services: Any services or experiences not specifically mentioned in the inclusions..
- International Travel: Airfare to and from Sri Lanka, along with any visa-related expenses.



Terms and Conditions

Rates and Availability:

- The rates provided are based on the hotels listed in the itinerary and are subject to change if government taxes or other factors change.
- Room availability will be confirmed upon check-in unless a block booking with a 50% advance payment is made.

Program-Specific Rates:

- These rates apply only to the listed itinerary. If clients wish to add or omit specific destinations, adjustments can be made. Customized itineraries can also be arranged upon request.

Customer Care and Complaints:

- Jetara Travel Agency is committed to ensuring a high level of customer satisfaction at all stages of your holiday.
- Any issues should be addressed with the service provider (e.g., hotel management), our local representative (if available), or ground agents as soon as possible.
- If unresolved, clients must notify Jetara Travel Agency within 24 hours via email to facilitate a prompt resolution.
- Jetara Travel Agency provides contact numbers before travel, and it is the client's responsibility to keep them accessible. We reserve the right to deny liability if this procedure is not strictly followed.

Force Majeure:

- Jetara Travel Agency cannot be held responsible for events outside our reasonable control, including but not limited to war, civil unrest, terrorism, extreme weather, natural disasters, flight cancellations, or rescheduling by airlines.
- Travelers are advised to consult their healthcare provider at least one month before travel regarding recommended vaccinations, malaria prevention, and other health measures as appropriate for their personal health needs.

Liability:

- Jetara Travel Agency accepts liability only for incidents directly caused by our proven negligence or that of our suppliers for arrangements forming part of your itinerary, covering accommodation and transfers arranged exclusively by us. This liability extends to illness, injury, or death only under these conditions.





CANCELLATION POLICY

- *30 Days or More Before Arrival: No charge; any payments made will be reimbursed (less any applicable bank fees).*
- *14–29 Days Before Arrival: 30% of the total booking value will be charged.*
- *7–13 Days Before Arrival: 75% of the total booking value will be charged.*
- *Less than 7 Days Before Arrival: 100% of the total booking value will be charged.*

