



SYNERGY-W8R P342 HERMES (ET)



WKSFM0164 WORLD K'S MICHIFUKU

SMOFF0126 SUMO CATTLE CO MICHIFUKU F126 (AI)

SMOFC0152 SUMO CATTLE CO HANA C152 (AI) (ET)

Sire: MYMFP0342 ARUBIAL UNITED P0342 (AI) (ET)

BDWIFY0408 MACQUARIE WAGYU Y408 (AI) (ET)

BDWFC1624 MACQUARIE WAGYU C1624

BDWFFZ0736 MACQUARIE WAGYU F Z736

SYNFF23U44235 SYNERGY-W8R P342 HERMES (ET)

WKSFM0164 WORLD K'S MICHIFUKU

SMOFF0126 SUMO CATTLE CO MICHIFUKU F126 (AI)

SMOFC0152 SUMO CATTLE CO HANA C152 (AI) (ET)

Dam: SYNFR563 SYNERGY F126 HIKOKURA R563 (ET)

IMUFNTF149 MITSUHIKOKURA (IMP USA)

USAFB16638 VT MS MITSUITOMICHI 149 A23 (ET)

PEDFB13667 VT MS ITOSHIGEMICHI (ET)

(July 2) 2024 Breedplan

Gestation Length	Birth Weight	200 Day Weight	400 Day Weight	600 Day Weight	Mat Cow Wt	Milk	Carcass Weight	Eye Muscle Area	Rump Fat	Retail Beef Yield	Marble Score	Marble Fineness	Breeder Feeder Index	Self Replacing Index
-2.9	+3.7	+23	+41	+54	+80	-3	+56	+9.2	-0.6	+0.3	+2.9	+0.60	\$470	\$421

HERMES & Hikohime Family Background in the Synergy Program:

Hermes is a special young bull with a slight line breeding to the super-sire Sumo Michifuku F126 and the Hikohime 3/2 maternal line. We have concentrated the Sumo F126 blood in this pedigree in part because of the success of his dam's full brother in our beef program. He produced incredible results for us as our highest %IMF steer to date at 59.44%, dMS 17.54, 105.63 cm² EMA, and 920 lbs HCW!

Arubial United has been a breed changing force in Wagyu, injecting much needed size and growth into the breed, while maintaining great carcass traits for Marble Score and Eye Muscle Area. Hermes is an elite son of United that maintains growth without United's extreme birth weight and improves his carcass traits! He is currently one of only 3 bulls in the world with his 57 CW, 9.1 EMA, 2.9 MS, and .61 MF (August 1 Run)!!

United now has 63 carcasses on his Breedplan proof with accuracies over 90% for most traits giving confidence in his ability to produce great carcasses. United was averaging an 8.5 AUS-MEAT MS and 502 kg HCW over his 1st 16 carcasses for Arubial Wagyu at the 2023 Marble High Sale. See Ribeyes below from Arubial Wagyu published during the 2023 Marble High Sale. These are truly massive hot carcass weights at any age!

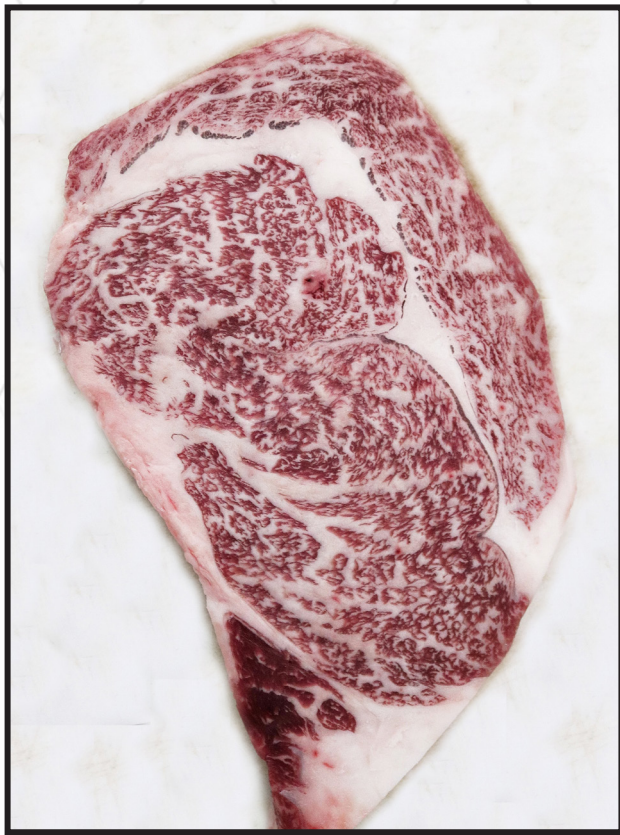


Sire: ARUBIAL UNITED P0342 (AI) (ET)

United Steer from Arubial Wagyu: dMS 13.02 & 582.5 kg HCW



United Steer from Arubial Wagyu: dMS 13.30 & 519.5 kg HCW



Dam: SYNERGY F126 HIKOKURA R563 (ET)

Full Brother to Dam (R563)

**59.44% IMF, 105.63 cm² REA,
& 920 lbs HCW!**

His dam is Synergy F126 Hikokura R563, a direct daughter of Sumo Michifuku F126. She was one of the top selling animals in our 2023 sale, selling for \$13,000 to Colby Carpenter of 22 Wagyu. She is an elite Sumo Cattle Co Michifuku F126 daughter backed by a tremendous pedigree of TF149 x TF148 x Michifuku x Kikuhana x TF Hikohime 3/2! Her genomic EBV panel is almost perfectly balanced with a combination of moderate birthweight, great growth traits, high milk, large carcass weight, good ribeye area, and fantastic marble score. Her dam is a rare daughter of Misuhikokura TF 149, who was one of the largest bulls phenotypically, in the Takeda farms export group. Mitsuhikokura's maternal grandmother, Hikokura 3-5, was awarded a grand prize at the Fourth Zenkyo Competition. Shogo Takeda produced Mitsuhikokura to be used on cattle with a high degree of inbreeding. He worked well here combining with Hikohime 3/2, Itoshigenami, and Michifuku.

The full brother to Synergy F126 Hikokura R563, produced one of our best carcasses to date in our Stonyrun Farms branded beef program. He is our highest MIJ camera % IMF and digital Marble Score carcass to date at 59.44% IMF and 17.54 dMS! But he was a great all-round carcass too with more than just marbling including a large 105.63 cm² Ribeye Area, and a heavy 920 lbs Hot Carcass Weight! This great carcass performance gives us confidence in the elite potential of Hermes!

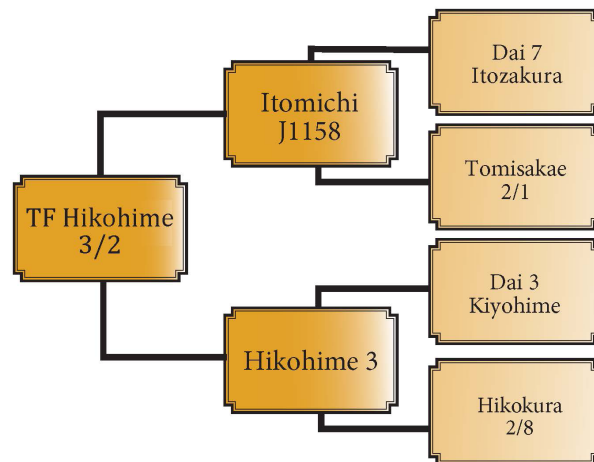


- Daniel Guerrero
- 843.298.5849
- wagyu8ranch@gmail.com
- w8ranch.com
- Loren Ruth
- 484.369.9590
- Loren@synergywagyu.com
- www.SynergySires.com
- www.SynergyWagyu.com

TF Hikohime 3/2 has produced leading direct maternal descendant sires including Coates Itoshigenami G113, Sumo Cattle Co Michifuku F154, Arubial United, Marura Notorious, Mayura Prologue, Mayura D0482, CHR Kitaguni 07K, CHR Yasufuku 246T, and CHR Takazakura 101L to name a few. These Breedplan leading sires from Australia are well known and need little introduction. However, in the United States, at Crescent Harbor Ranch, the sires CHR Kitaguni 07K, CHR Yasufuku 246T, and CHR Takazakura 101L may need more introduction. At the time they were bred by Ralph Valdez all three were well known and highly used both as E.T. & A.I. sires. They all hailed from Ralph's Kikuhana daughter of TF Hikohime 3/2. CHR Kitaguni 07K is well known for high marbling and producing great carcasses while maintaining growth/size, a rare trait for a Kitaguni son. CHR Takazakura 101L is found in many pedigrees and is synonymous with balanced females and great maternal traits. 246T much like 07K and 101L is known to have produced great balanced cattle that perform on the rail and in the paddock. Hermes hails from this branch of the Ralph's CHR Kikuhana cow family!

To Summarize:

What a bull! Hermes is one of only 3 bulls in the world and the only bull in the US with his carcass traits EBVs for CW, EMA, MS, and MF (Breedplan August Run 1). These are the money-making traits for Wagyu. He is a United son with a unique sire stack behind that. The next bull in the pedigree is F126, giving Hermes a double shot of F126. F126 is proving himself to be a fantastic sire that has transmitted superior milk production and great carcass traits, particularly for EMA. The maternal great grandsire is the physically impressive TF149 Mitsuhikokura. Behind TF149 is a classic sire stack of TF148 x Michifuku x Kikuhana. The base female of this pedigree is the breed influencing TF Hikohime 3/2. The ribeye reference photo is from a full brother to his dam, which is our highest IMF scoring carcass to date at 59.44% IMF! This bull spells profitability with his pedigree, phenotype, and breed-leading EBVs. He is an investment opportunity that will pay big dividends!



Foundation Cow Hikohime 3/2's Pedigree



CHR Kitaguni 07K



CHR Takazakura 101L