



SYNERGY N0387 NOTORIETY U120 (ET)



IMUFQTF148 ITOSHIGENAMI (IMP USA)
ADBFA0139 MAYURA ITOSHIGENAMI JNR (AI)
ADBFX0001 MAYURA DAI NI KINNTOU 1 (AI)
Sire: ADBFN0387 MAYURA NOTORIOUS N0387
IMUFLT151 ITOZURUDOI TF151 (IMP USA)
WGWFD8223 WAGYU GENETICS HIKOHIME D8223 (AI) (ET)
3NOFA0471 WICKIUP HIKOHIME Z471 (AI) (ET)
SYNF23U120 SYNERGY N0387 NOTORIETY U120 (ET)
PEDFA10632 SHIGESHIGENAMI J10632
IMUFQTF148 ITOSHIGENAMI (IMP USA)
PEDFA661 FUKUYUKI
Dam: SYNFN50 SYNERGY 148 SUZU 50E ET (ET)
WKSFP1593 WORLD K'S SHIGESHIGETANI 1593
USAFB21531 SYNERGY SHIG SUZITO (ET)
USAFB11844 STONYRUN ID 151 SUZITO 3 (ET)

(July 2) 2024 Breedplan

Gestation Length	Birth Weight	200 Day Weight	400 Day Weight	600 Day Weight	Mat Cow Wt	Milk	Carcass Weight	Eye Muscle Area	Rump Fat	Retail Beef Yield	Marble Score	Marble Fineness	Breeder Feeder Index
+0.5	-1.6	-3	-2	+2	-6	-1	+5	13.6	-1.5	+2.4	+3.4	+0.41	\$425

Notoriety U120 & Suzito Family Background in the Synergy Program:

This heifer, Notoriety U120, combines our best known and carcass proven Suzito cow family with the world renowned sire Mayura Notorious! She has an impressive sire stack of carcass proven bulls featuring Notorious x TF148 x Shigeshigetani x TF151 x Suzutaka 2 (maternal sister to Shigeshigetani) x Suzutani. She marries Suzutani royalty with Mayura bred excellence creating extreme top 1% carcass traits!

Her sire Mayura Notorious N0378, is now deceased and semen is extremely rare & valuable. Having sold to a high of \$57,500 USD / straw! He is the result of mating the two highest performing animals at Mayura station. His dam has produced 4 carcasses, MIJ Ave MS 11, EMA 110.25, HSCW 449.375kg, Ave 302 DOF in the Mayura program. Notorious is now carcass proven and is an extreme transmitting sire for Ribeye Area, one of the most heritable and profitable areas of the entire carcass. This is a staple focus at Synergy Wagyu, improving Ribeye Area directly creates increased profits in our Stonyrun Farms Branded Beef program. Notorious's sire is none other than JNR, a true once in a generation sire and the foundation of the Mayura Station branded beef program. JNR's breed leading EBVs are backed up by jaw dropping raw data averages from Mayura Station (2019 Data) on 805 carcasses of 9.05 MS, 448 kg (985.6 lbs.) HSCW, and 109 cm² (16.90 in²) EMA (10th/11th rib).

Mayura Notorious is now backed by 54 carcasses in Breedplan with great accuracies for all traits, highlighted by a +3.2 MS, +15.7 EMA, +26 CW, and \$505 BFI! Notorious carcasses have won the 2022 & 2024 AWA Branded Beef Competition awards! A truly amazing feat that also highlights the eating quality he pocesses.



Sire: MAYURA NOTORIOUS N0387

**WAGYU
BRANDED
BEEF
COMPETITION**

**2022 GRAND
CHAMPION WINNER**
AWARDED TO THE HIGHEST SCORING ENTRY ACROSS ALL THREE CLASSES

Mayura
Signature Series
FULL-BLOODED WAGYU BEEF
和牛肉

WAGYU BRANDED BEEF COMPETITION	WAGYU BRANDED BEEF COMPETITION	WAGYU BRANDED BEEF COMPETITION
CHAMPION	CHAMPION	GOLD MEDAL
2022 - GRAND CHAMPION WAGYU	2022 - FULLBLOOD JAPANESE BLACK	2022 - FULLBLOOD JAPANESE BLACK

SIGNATURE SERIES
BY MAYURA STATION

SCORE 976

Wagyu content **Fullblood 100%**

Breeder **Mayura Station**

Digital Marbling **61%**
Digital Marbling Fineness **93.1**
Eye Muscle Area **145 cm²**

Days on feed (approx) **270**
Feed ingredients include cereal hay, corn, wheat and Mayura's proprietary chocolate feed

Approx. age at slaughter **28 months**
Target carcass wt. range **<440 kg**
Processor **G & K O'Connor**

World class, extremely marbled, juiciness and flavour that dissolves in a rich beef and butter succulence. Exotic caramel and sweet fresh finish.

2022 Branded Beef Competition Notorious Steer!

GRAND CHAMPION 2024
AWARDED TO THE HIGHEST SCORING ENTRY ACROSS ALL CLASSES

Mayura
Signature Series
FULL-BLOODED WAGYU BEEF
和牛肉

WAGYU BRANDED BEEF COMPETITION	WAGYU BRANDED BEEF COMPETITION	WAGYU BRANDED BEEF COMPETITION
TROPHY	CHAMPION	GOLD MEDAL
2024 - GRAND CHAMPION WAGYU	2024 - FULLBLOOD WAGYU	2024 - FULLBLOOD WAGYU

Signature Series
BY MAYURA STATION

Breeder **Mayura Station**

Digital Marbling **60%**
Digital Marbling Fineness **8.1**
Unsaturated Fatty Acid **62%**
Eye Muscle Area **155 cm²**

Days on feed (approx) **300**
Age at slaughter (approx) **27 months**
Target CWT range **450 kg**
Processor **G & K O'Connor**

Exceptional melt in your mouth juiciness, with lasting umami flavours and a satisfying silky mouthfeel.

Sire ID **ADBFN0387**
Dam ID **ADBFN1201**

2024 Branded Beef Competition Notorious Steer!



JNR x Michifuku x Suzito 3!

57.18 % IMF, 16.87 dMS, 8.38 NFI-2, 82.45 cm²,
970 lbs HCW



Maternal Brother to U120!

42.98 % IMF, 123.38 cm² EMA, 942 lbs HCW



Dam: SYNERGY 148 SUZU 50E ET (ET)



Ribeye: Maternal Brother

42.98 % IMF, 123.38 cm² EMA, 942 lbs HCW

50E is one of our favorite cows and has developed into a cornerstone of our program having produced amazing breeding stock and carcasses for us. She is an tremendous example of what the Suzutani maternal line is capable of transmitting. Her sire stack is a list of some of the best and most proven sires in the Wagyu breed; TF148 x Shigeshigetani x TF151 x Takazakura (Full sister to TWA Shikikan) x Suzutani! We are now working with her progeny sired by Mayura Itoshigenami JNR, Sumo F154, Sumo L195, and highlighted by this Notorious daughter U120! Her progeny are prominent influences in both our Fullblood and F1 programs.

We cannot overlook the importance of U120's maternal line the Suzutani, but where do we begin talking about the Queen of the Breed, Suzutani! Suzutani was a direct import from Japan along with Okutani and Rikitani. She has gone on to establish herself as arguably the most genetically influential cow in the Wagyu breed outside of Japan. She has produced breed leading sires in both the US and Australia. This long list includes sires such as Sanjiro, Shigeshigetani, Kanadagene 100, TWA Shikikan, and Sanjiro 3. Both the US and Australian sire summaries are dotted with her sons, grandsons, and great grandsons. Suzutani has put a powerful stamp of quality carcass traits into her offspring, particularly with extensive marbling and huge rib eye area. Because of this, feedlot operators the world over specifically seek Suzutani influenced cattle. If breeders are looking to capitalize on the specific trait of marbling that is unique to Wagyu, then you need to be pursuing Suzutani genetics.

To Summarize:

Suzu 120 is a rare jewel of the breed. She has a stunning pedigree of highly proven sires infused into arguably the greatest carcass trait maternal line of the breed in the Suzutani. Superior carcass traits are infused into her genetic profile beginning with her sire, Notorious, and continued with her beautiful maternal line and sire stack. Itoshigenami is stacked on Shigeshigetani, who was in turn mated to the \$52,000 Suzito 3. The dam of Suzito 3 is a maternal sister to Sanjiro, Sanjiro 3, and Shigeshigetani. Suzu 120 is one of only a handful of flush age females in the world with her genomic EBVs for MS, EMA, and MF! Notoriety U120 will provide a fantastic return on investment simply with her flush potential. In her first 3 OPU sessions she produced 60, 40, and 26 oocytes. Her productive life is just beginning and she has a long career ahead of her. Partner with Synergy on this elite heifer to chart a powerful course in to the future that will impact generations to come!



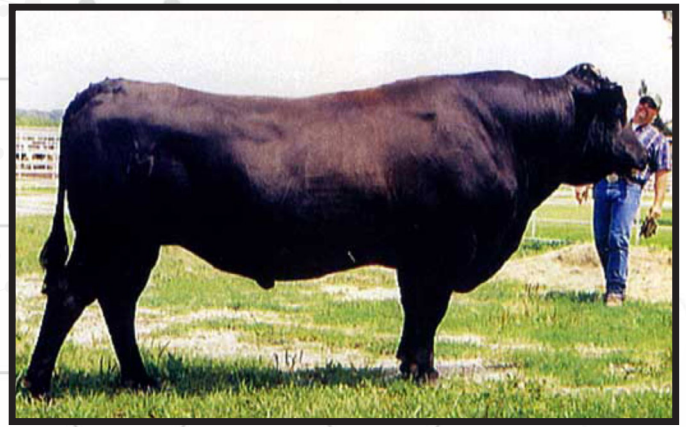
Maternal Great Granddam: STONYRUN ID 151 SUZITO 3 (ET)



WORLD K'S SUZUTANI



Maternal Granddam: SYNERGY SHIG SUZITO (ET)



WORLD K'S SHIGESHIGETANI 1593



484.369.9590 • Loren@synergywagyu.com
• www.SynergySires.com
• www.SynergyWagyu.com
• Loren Ruth, 446 Stony Run Rd., Spring City, PA 19475