



## DAVIS PARK GARBAGE & RECYCLING 2025

JAN 2025						
S	M	T	W	T	F	S
			1	2	3	4
5	6	7	8	9	10	11
12	13	14	15	16	17	18
19	20	21	22	23	24	25
26	27	28	29	30	31	

FEB 2025						
S	M	T	W	T	F	S
						1
2	3	4	5	6	7	8
9	10	11	12	13	14	15
16	17	18	19	20	21	22
23	24	25	26	27	28	

MAR 2025						
S	M	T	W	T	F	S
						1
2	3	4	5	6	7	8
9	10	11	12	13	14	15
16	17	18	19	20	21	22
23	24	25	26	27	28	29
30	31					

APR 2025						
S	M	T	W	T	F	S
		1	2	3	4	5
6	7	8	9	10	11	12
13	14	15	16	17	18	19
20	21	22	23	24	25	26
27	28	29	30			

MAY 2025						
S	M	T	W	T	F	S
				1	2	3
4	5	6	7	8	9	10
11	12	13	14	15	16	17
18	19	20	21	22	23	24
25	26	27	28	29	30	31

JUN 2025						
S	M	T	W	T	F	S
1	2	3	4	5	6	7
8	9	10	11	12	13	14
15	16	17	18	19	20	21
22	23	24	25	26	27	28
29	30					

JUL 2025						
S	M	T	W	T	F	S
		1	2	3	4	5
6	7	8	9	10	11	12
13	14	15	16	17	18	19
20	21	22	23	24	25	26
27	28	29	30	31		

AUG 2025						
S	M	T	W	T	F	S
					1	2
3	4	5	6	7	8	9
10	11	12	13	14	15	16
17	18	19	20	21	22	23
24	25	26	27	28	29	30
31						

SEP 2025						
S	M	T	W	T	F	S
	1	2	3	4	5	6
7	8	9	10	11	12	13
14	15	16	17	18	19	20
21	22	23	24	25	26	27
28	29	30				

OCT 2025						
S	M	T	W	T	F	S
			1	2	3	4
5	6	7	8	9	10	11
12	13	14	15	16	17	18
19	20	21	22	23	24	25
26	27	28	29	30	31	

NOV 2025						
S	M	T	W	T	F	S
						1
2	3	4	5	6	7	8
9	10	11	12	13	14	15
16	17	18	19	20	21	22
23	24	25	26	27	28	29
30						

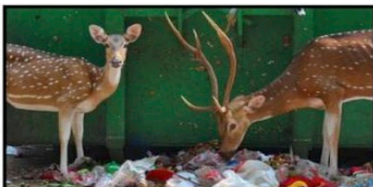
DEC 2025						
S	M	T	W	T	F	S
	1	2	3	4	5	6
7	8	9	10	11	12	13
14	15	16	17	18	19	20
21	22	23	24	25	26	27
28	29	30	31			

**Solid Waste & Recycling Collection -**  
Paper/Cardboard must be separate of  
Plastic/Metal

**Solid Waste, Bulk Item, Landscaping &**  
**Recycling Collection - Paper/Cardboard**  
must be separate of Plastic/Metal

**Holidays – When applicable, pickup will**  
**occur on the following day as indicated.**  
**COLLECTION WILL REMAIN ON FRIDAY**  
**FOR THE 4TH OF JULY!**

**Solid Waste, Bulk Item & Landscaping**  
**Debris Collection**



**COVER BINS**  
**TIGHTLY TO**  
**DETER ANIMALS**



# Davis Park Refuse District

## Collection Schedule & Guidelines

- Solid Waste & Bulk Item Collection
  - Tuesdays: March 18 through December 2
  - Fridays: May 23 through September 12
  - All solid waste must be bagged and in watertight containers, loose waste will not be picked up.
- Recycling
  - Tuesdays: March 18 through December 2
  - Paper/Cardboard recycling must be placed separated of plastic/aluminum items
- Winter Pick-up: None, please call for special arrangements
- Holidays: No collection, will be rescheduled to the next business day

**Pick-Up Location:** Please make sure all items are placed in front of premises, adjacent to and not more than 5 feet from the nearly public walkway by 5 a.m. on day of pick up. Please cover containers tightly to discourage animal intrusion. Cans should be limited to 50 lbs. for the safety of our staff.

**Bulk Items:** Please email [Carting@BrownieNY.com](mailto:Carting@BrownieNY.com) or call (631) 750-5325 to make arrangements for bulk pick-up. Limit 4 items per location per week. Refrigerators must have doors removed, Mattresses and box springs must be placed in a plastic disposal bag. Limit 4 items per household weekly.

**Landscaping Debris:** Small pieces of landscaping may be placed in sturdy plastic bags. Branches must be tied/bundled no larger than 4' x 2' for collection. 5 bags/bundles per solid waste pickup day, limit 50 lbs. Loose yard waste will not be collected nor will sand, soil, grass or stumps. Landscaping debris must be a product of homeowner performed work, not a hired contractor.

**Contractor Debris:** Any and all contractor debris must be removed by special arrangement. Please call (631) 750-5325 to schedule. Please be aware it is illegal to stack wood or other debris on public property. Dumpsters are available upon request.

**Recycling:** Place the following items in your recycling container. Excess recyclables may be placed in clear plastic bags only. Additional approved containers, if desired, are available for purchase from the Town of Brookhaven.

**\*CLEAN GLASS CAN NOW BE SELF DEPOSITED IN THE LABELED BIN AT THE FREIGHT DOCK\***

- Metal Cans
  - Rinsed clean; labels, caps, and lids need not be removed. Do not crush. Aerosol spray cans are acceptable with plastic caps removed.
- Plastic Containers (#1, #2, #5)
  - Rinsed clean, look for the number in the triangle symbol on the bottom of the container; labels, caps and lids need not be removed.
- Aluminum Foil & Foil Pans must be rinsed and crumpled
- Paper Products must be packed in brown paper grocery bags or tied in bundles with twine; no plastic bags nor plastic string/wire.
- Corrugated Cardboard must be flattened and tied with string (no plastic tie/wire)
- **MIXED RECYCLING WILL NOT BE SEPARATED BY PICKUP ATTENDANTS AND WILL BE TREATED AS GARBAGE THE FOLLOWING PICKUP DAY.**

For collection problems, please contact:  
Brownie Carting, Inc.  
(631) 750-5325  
[Carting@BrownieNY.com](mailto:Carting@BrownieNY.com)