



## CHERRY GROVE GARBAGE & RECYCLING 2025

JAN 2025						
S	M	T	W	T	F	S
			1	2	3	4
5	6	7	8	9	10	11
12	13	14	15	16	17	18
19	20	21	22	23	24	25
26	27	28	29	30	31	

FEB 2025						
S	M	T	W	T	F	S
						1
2	3	4	5	6	7	8
9	10	11	12	13	14	15
16	17	18	19	20	21	22
23	24	25	26	27	28	

MAR 2025						
S	M	T	W	T	F	S
						1
2	3	4	5	6	7	8
9	10	11	12	13	14	15
16	17	18	19	20	21	22
23	24	25	26	27	28	29
30	31					

APR 2025						
S	M	T	W	T	F	S
		1	2	3	4	5
6	7	8	9	10	11	12
13	14	15	16	17	18	19
20	21	22	23	24	25	26
27	28	29	30			

MAY 2025						
S	M	T	W	T	F	S
				1	2	3
4	5	6	7	8	9	10
11	12	13	14	15	16	17
18	19	20	21	22	23	24
25	26	27	28	29	30	31

JUN 2025						
S	M	T	W	T	F	S
1	2	3	4	5	6	7
8	9	10	11	12	13	14
15	16	17	18	19	20	21
22	23	24	25	26	27	28
29	30					

JUL 2025						
S	M	T	W	T	F	S
		1	2	3	4	5
6	7	8	9	10	11	12
13	14	15	16	17	18	19
20	21	22	23	24	25	26
27	28	29	30	31		

AUG 2025						
S	M	T	W	T	F	S
					1	2
3	4	5	6	7	8	9
10	11	12	13	14	15	16
17	18	19	20	21	22	23
24	25	26	27	28	29	30
31						

SEP 2025						
S	M	T	W	T	F	S
	1	2	3	4	5	6
7	8	9	10	11	12	13
14	15	16	17	18	19	20
21	22	23	24	25	26	27
28	29	30				

OCT 2025						
S	M	T	W	T	F	S
			1	2	3	4
5	6	7	8	9	10	11
12	13	14	15	16	17	18
19	20	21	22	23	24	25
26	27	28	29	30	31	

NOV 2025						
S	M	T	W	T	F	S
						1
2	3	4	5	6	7	8
9	10	11	12	13	14	15
16	17	18	19	20	21	22
23	24	25	26	27	28	29
30						

DEC 2025						
S	M	T	W	T	F	S
	1	2	3	4	5	6
7	8	9	10	11	12	13
14	15	16	17	18	19	20
21	22	23	24	25	26	27
28	29	30	31			

Solid Waste & Recycling Collection  
Paper/Cardboard must be separate of  
Plastic/Metal

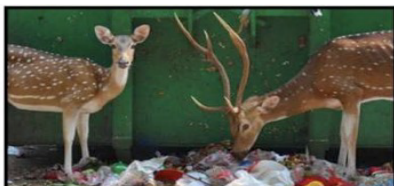
Solid Waste & Plastic/Metal Recycling  
Collection

Marina Self-Service Dumpster Only –  
Household Waste & Recycling - MUST  
Be Separated

Solid Waste & Paper/Cardboard  
Recycling Collection

Holidays – When applicable, pickup will  
occur on the following day as indicated.  
COLLECTION WILL REMAIN ON FRIDAY  
FOR THE 4TH OF JULY!

Cherry Grove Community Cleanup Day



COVER BINS  
TIGHTLY TO  
DETER ANIMALS



# Cherry Grove Refuse District Collection Schedule & Guidelines

- Solid Waste & Bulk Item Collection
  - Tuesdays: April 1 through December 2
  - Fridays: May 9 through September 5
  - **All solid waste must be bagged and in watertight containers, loose waste will not be picked up.**
- Recycling
  - Tuesdays: April 1 through December 2
  - Fridays: May 9 through September 5
  - **Paper/Cardboard recycling must be placed separate of plastic/aluminum items**
- Winter Pick-up (December through March)
  - No house-to-house collection. Containers are provided and labeled, located on the north side of the main ferry dock. For garbage – please use a sturdy, tied black bag. For paper and cardboard, please tie loose items and flatten boxes. Metal cans and #1, 2 & 5 plastics can be mixed. Must be deposited in the container loose - no bags! Dumpsters swapped on Tuesdays.
- Holidays: No collection, will be rescheduled to the next business day

**Pick-Up Location:** Please make sure all items are placed in front of premises, adjacent to and not more than 5 feet from the nearby public walkway by 5 a.m. on day of pick up. Please cover containers tightly to discourage animal intrusion. Cans should be limited to 50 lbs. for the safety of our staff.

**Bulk Items:** Please email [Carting@BrownieNY.com](mailto:Carting@BrownieNY.com) or call (631) 750-5325 to make arrangements for bulk pick-up. Limit 4 items per location per week. Refrigerators must have doors removed, Mattresses and box springs must be placed in a plastic disposal bag. Limit 4 items per household weekly.

**Landscaping Debris:** Small pieces of landscaping may be placed in sturdy plastic bags. Branches must be tied/bundled no larger than 4' x 2' for collection. 5 bags/bundles per solid waste pickup day, limit 50 lbs. Loose yard waste will not be collected nor will sand, soil, grass or stumps. Landscaping debris must be a product of the homeowner performed work, not a hired contractor.

**Contractor Debris:** Any and all contractor debris must be removed by special arrangement. Please call (631) 750-5325 to schedule. Please be aware it is illegal to stack wood or other debris on public property. Dumpsters are available upon request.

**Recycling:** Place the following items in your recycling container. Excess recyclables may be placed in clear plastic bags only. Additional approved containers are available for purchase from the Town of Brookhaven.

- Metal Cans
  - Rinsed clean; labels, caps, and lids need not be removed. Do not crush. Aerosol spray cans are acceptable with plastic caps removed.
- Plastic Containers (#1, #2, #5)
  - Rinsed clean, look for the number in the triangle symbol on the bottom of the container; labels, caps and lids need not be removed.
- Aluminum Foil & Foil Pans must be rinsed and crumpled
- Paper Products must be packed in brown paper grocery bags or tied in bundles with twine; no plastic bags nor plastic string/wire.
- Corrugated Cardboard must be flattened and tied with string (no plastic tie/wire)
- **MIXED RECYCLING WILL NOT BE SEPARATED BY PICKUP ATTENDANTS AND WILL BE TREATED AS GARBAGE THE FOLLOWING PICKUP DAY.**

For collection problems, please contact:

Brownie Carting, Inc.

(631) 750-5325

[Carting@BrownieNY.com](mailto:Carting@BrownieNY.com)