



FIRE ISLAND PINES GARBAGE & RECYCLING 2025

| JAN 2025 | | | | | | |
|----------|----|----|----|----|----|----|
| S | M | T | W | T | F | S |
| | | | 1 | 2 | 3 | 4 |
| 5 | 6 | 7 | 8 | 9 | 10 | 11 |
| 12 | 13 | 14 | 15 | 16 | 17 | 18 |
| 19 | 20 | 21 | 22 | 23 | 24 | 25 |
| 26 | 27 | 28 | 29 | 30 | 31 | |

| FEB 2025 | | | | | | |
|----------|----|----|----|----|----|----|
| S | M | T | W | T | F | S |
| | | | | | | 1 |
| 2 | 3 | 4 | 5 | 6 | 7 | 8 |
| 9 | 10 | 11 | 12 | 13 | 14 | 15 |
| 16 | 17 | 18 | 19 | 20 | 21 | 22 |
| 23 | 24 | 25 | 26 | 27 | 28 | |

| MAR 2025 | | | | | | |
|----------|----|----|----|----|----|----|
| S | M | T | W | T | F | S |
| | | | | | | 1 |
| 2 | 3 | 4 | 5 | 6 | 7 | 8 |
| 9 | 10 | 11 | 12 | 13 | 14 | 15 |
| 16 | 17 | 18 | 19 | 20 | 21 | 22 |
| 23 | 24 | 25 | 26 | 27 | 28 | 29 |
| 30 | 31 | | | | | |

| APR 2025 | | | | | | |
|----------|----|----|----|----|----|----|
| S | M | T | W | T | F | S |
| | | 1 | 2 | 3 | 4 | 5 |
| 6 | 7 | 8 | 9 | 10 | 11 | 12 |
| 13 | 14 | 15 | 16 | 17 | 18 | 19 |
| 20 | 21 | 22 | 23 | 24 | 25 | 26 |
| 27 | 28 | 29 | 30 | | | |

| MAY 2025 | | | | | | |
|----------|----|----|----|----|----|----|
| S | M | T | W | T | F | S |
| | | | | 1 | 2 | 3 |
| 4 | 5 | 6 | 7 | 8 | 9 | 10 |
| 11 | 12 | 13 | 14 | 15 | 16 | 17 |
| 18 | 19 | 20 | 21 | 22 | 23 | 24 |
| 25 | 26 | 27 | 28 | 29 | 30 | 31 |

| JUN 2025 | | | | | | |
|----------|----|----|----|----|----|----|
| S | M | T | W | T | F | S |
| 1 | 2 | 3 | 4 | 5 | 6 | 7 |
| 8 | 9 | 10 | 11 | 12 | 13 | 14 |
| 15 | 16 | 17 | 18 | 19 | 20 | 21 |
| 22 | 23 | 24 | 25 | 26 | 27 | 28 |
| 29 | 30 | | | | | |

| JUL 2025 | | | | | | |
|----------|----|----|----|----|----|----|
| S | M | T | W | T | F | S |
| | | 1 | 2 | 3 | 4 | 5 |
| 6 | 7 | 8 | 9 | 10 | 11 | 12 |
| 13 | 14 | 15 | 16 | 17 | 18 | 19 |
| 20 | 21 | 22 | 23 | 24 | 25 | 26 |
| 27 | 28 | 29 | 30 | 31 | | |

| AUG 2025 | | | | | | |
|----------|----|----|----|----|----|----|
| S | M | T | W | T | F | S |
| | | | | | 1 | 2 |
| 3 | 4 | 5 | 6 | 7 | 8 | 9 |
| 10 | 11 | 12 | 13 | 14 | 15 | 16 |
| 17 | 18 | 19 | 20 | 21 | 22 | 23 |
| 24 | 25 | 26 | 27 | 28 | 29 | 30 |
| 31 | | | | | | |

| SEP 2025 | | | | | | |
|----------|----|----|----|----|----|----|
| S | M | T | W | T | F | S |
| | 1 | 2 | 3 | 4 | 5 | 6 |
| 7 | 8 | 9 | 10 | 11 | 12 | 13 |
| 14 | 15 | 16 | 17 | 18 | 19 | 20 |
| 21 | 22 | 23 | 24 | 25 | 26 | 27 |
| 28 | 29 | 30 | | | | |

| OCT 2025 | | | | | | |
|----------|----|----|----|----|----|----|
| S | M | T | W | T | F | S |
| | | | 1 | 2 | 3 | 4 |
| 5 | 6 | 7 | 8 | 9 | 10 | 11 |
| 12 | 13 | 14 | 15 | 16 | 17 | 18 |
| 19 | 20 | 21 | 22 | 23 | 24 | 25 |
| 26 | 27 | 28 | 29 | 30 | 31 | |

| NOV 2025 | | | | | | |
|----------|----|----|----|----|----|----|
| S | M | T | W | T | F | S |
| | | | | | | 1 |
| 2 | 3 | 4 | 5 | 6 | 7 | 8 |
| 9 | 10 | 11 | 12 | 13 | 14 | 15 |
| 16 | 17 | 18 | 19 | 20 | 21 | 22 |
| 23 | 24 | 25 | 26 | 27 | 28 | 29 |
| 30 | | | | | | |

| DEC 2025 | | | | | | |
|----------|----|----|----|----|----|----|
| S | M | T | W | T | F | S |
| | 1 | 2 | 3 | 4 | 5 | 6 |
| 7 | 8 | 9 | 10 | 11 | 12 | 13 |
| 14 | 15 | 16 | 17 | 18 | 19 | 20 |
| 21 | 22 | 23 | 24 | 25 | 26 | 27 |
| 28 | 29 | 30 | 31 | | | |

Solid Waste Collection Days

Recyclables & Landscaping
Collection Days

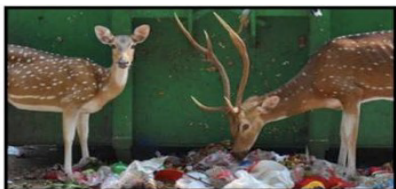
Bulk Item ONLY Collection Days

Marina Self-Service Dumpsters
Only. Garbage & Recyclables
Must Be Separated. No Bulk
Items or Construction Debris!

Solid Waste & Bulk Item
Collection Days

Holiday - When applicable,
collection will take place on the
following day (if applicable)

Special Collection Day -
Landscaping Debris Only!



**COVER BINS
TIGHTLY TO
DETER ANIMALS**



Fire Island Pines Refuse District Collection Schedule & Guidelines

- Solid Waste Collection (Includes Commercial Pickup Locations)
 - Mondays: March through November
 - Thursdays: April through September
 - **All solid waste must be bagged and in watertight containers, loose waste will not be picked up.**
- Bulk Item Collection - Thursdays: March through November
- Recycling & Landscaping - Wednesdays: March through November
- E-Waste: Homeowner must deliver to the residential freight dock on the first Thursday of each month by 6 a.m.
 - TVs, Computers, Printers, Radios, DVD Players, Routers, Modems, Phones, Cameras, etc.
- Winter Pick-up (December through February)
 - No house-to-house collection. Labeled containers are located West of Harbor Walk on the South side of the Boulevard. For garbage – please use a sturdy, tied black bag. For paper and cardboard, please tie loose items and flatten boxes. Metal cans and #1, 2 & 5 plastics can be mixed. Must be deposited in the container loose - no bags! Dumpsters swapped on Tuesdays.
- Holidays: No collection, will be rescheduled to the next business day

Pick-Up Location: Please make sure all items are placed in front of premises, adjacent to & not more than 5 feet from the nearly public walkway by 5 a.m. on day of pick up. Please cover containers tightly to discourage intrusion from animals. Brownie Companies is not responsible for the removal of loose debris left inside sheds and/or gatehouses. All garbage must be bagged and containers must be limited to 50 lbs. for the safety of the attendants. **Residents are NOT permitted to bring waste and/or recyclables to the freight dock from March through November.**

Bulk Items: To be collected separately on THURSDAYS, limit 4 per household. This includes cans or bags of construction debris. Brownie Carting is not obligated to take railroad ties, dirt, concrete, hot tubs, propane, or acetylene tanks. Large furniture and appliance pickups must be emailed or called in 24 hours in advance. Mattresses/box springs must be placed in plastic mattress disposal bags. Construction debris must be a product of homeowner performed work, not a hired contractor.

Landscaping Debris: Small pieces of landscaping must be placed in kraft paper bags. Branches must be tied/bundled no larger than 4' x 2' for collection. 5 bags/bundles collected on WEDNESDAYS, limit 50 lbs. Loose yard waste will not be collected nor will sand, soil, grass or stumps. Landscaping debris must be a product of homeowner performed work, not a hired contractor. Plastic bags will not be accepted!

Recycling:

CLEAN GLASS CAN NOW BE SELF DEPOSITED IN THE LABELED BINS BEHIND THE EAST END OF THE WAGON RACK

Place the following items in your recycling container. If recycling container is full, the remainder may be placed in clear plastic bags. Additional approved containers are available for purchase from the Town of Brookhaven.

- Metal Cans
 - Rinsed clean; labels, caps, and lids need not be removed. Do not crush. Aerosol spray cans are acceptable with plastic caps removed.
- Plastic Containers (#1, #2, #5)
 - Rinsed clean, look for the number in the triangle symbol on the bottom of the container; labels, caps and lids need not be removed.
- Aluminum Foil & Foil Pans must be rinsed and crumpled
- Paper Products must be packed in brown paper grocery bags or tied in bundles with twine; no plastic bags nor plastic string/wire.
- Corrugated Cardboard must be flattened and tied with string (no plastic tie/wire)
- **MIXED RECYCLING WILL NOT BE SEPARATED BY PICKUP ATTENDANTS AND WILL BE TREATED AS GARBAGE THE FOLLOWING PICKUP DAY.**

For collection problems, please contact:

Brownie Carting, Inc.

(631) 750-5325

Carting@BrownieNY.com