

The Outdoor Collection



(RTB after 30 days) on all hardware

STOWAWAY

OUTDOOR  DISPLAY

Highly portable outdoor stand with great visual impact

- High quality fibreglass poles with graphic printed onto 117gsm knitted polyester
- Sprung fibreglass poles pack away into a small carry bag.
- Supplied with graphic, ground pegs and carry bag ready to go.
- Assembly time: 30 secs
- People required: 1



Specification

Name	S Stowaway	M Stowaway	L Stowaway
Overall Width	1420mm	1720mm	2020mm
Overall Height	700mm	850mm	1000mm
Overall Depth	400-480mm	400-480mm	400-480mm

Available sizes



Stowaway



Mistral

LAMP-POST BANNER

**Display your message from
a lamp post or a wall**

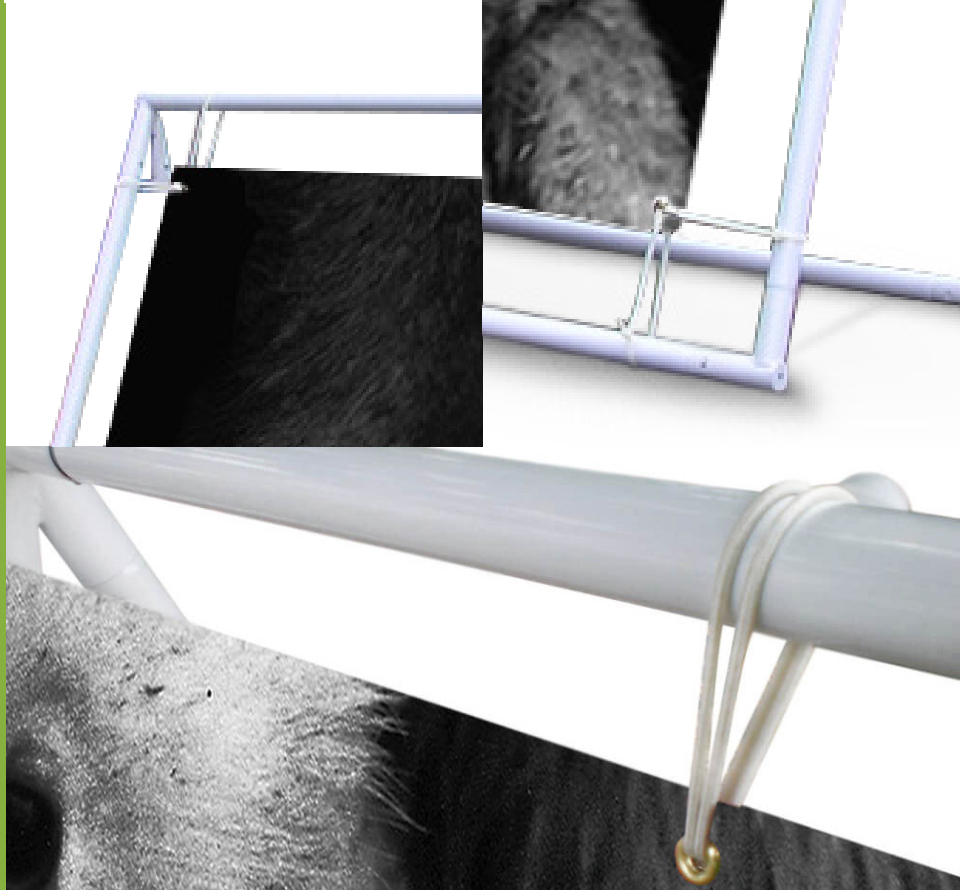
- Brackets can be moved for adjustable height
- Brackets are made from weather proof aluminium castings and GRP tubes
- Pole pockets top and bottom
- Includes two wind-slits and two securing-eyelets as standard for continuous use in all weather conditions.



HEAVY DUTY *banner frame*

Make the most of your banner with these extremely durable banner frames

- Includes bespoke-printed graphic to fit the frame
- 35mm diameter steel tube construction
- Single-sided or double-sided available in different sizes 3×1 / 4.5×1 / 6×1m
- Includes bungees ties
- Built to last



TORNADO

OUTDOOR COUNTER

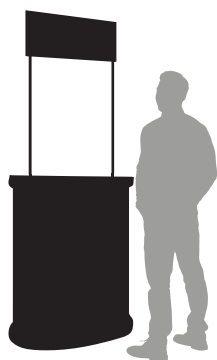
A lightweight frame with tambour graphic wrap, making it a very portable promotions counter

- Base graphic printed on 440gsm PVC with no splits or breaks
- Weatherproof, robust and durable
- Hollow base can be filled with water or sand for outdoor stability
- Suitable for indoor or outdoor use
- Header graphic printed on Self-Adhesive Vinyl applied to 5mm Foamex

Specification

Name	Tornado
Overall Width	850mm
Overall Height	2050mm
Counter Height	1260mm
Overall Depth	500mm
Header Graphic Size	770mm (W) × 290mm (H)
Base Graphic Size	2130mm (W) × 870mm (H)
Weight	17kg
Warranty	12 months

One size



Tornado

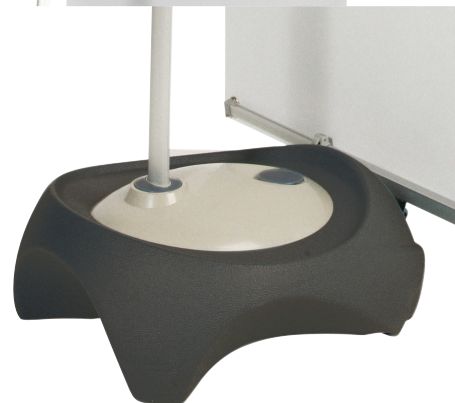


BLIZZARD

OUTDOOR BANNER STAND

An elegant outdoor display with a water-fillable base

- Ideal for all kinds of corporate, sporting and outdoor events and promotions. Its simple design makes it very easy to assemble on-site and its water-fillable base makes it very stable.
- Includes banner with hems and eyelets 0.8m wide × 2m high printed on 440gsm PVC to your artwork.
- Unique composite outdoor/indoor design with telescopic pole and water fillable base.
- Base holds 15 litres water (approx.)
- Optional deluxe carry bag
- We print the graphics on our standard 440gsm PVC outdoor banner-grade material so you know they are excellent print quality and perfectly suited to being outdoors.
- Replacement graphics easily ordered and fitted.



One size



Blizzard
800mm-wide

Specification

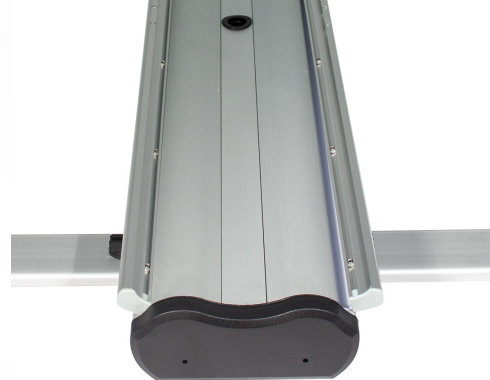
Name	Blizzard
Overall Width	800mm
Overall Height	2100mm
Overall Depth	540mm
Eyelets in Graphic	4
Graphic Width	800mm
Graphic Height	2000mm
Weight	4kg
Set-Up Time	6 mins
People Required	1
Beaufort Scale	4 (13-18mph/21-29kph)
Warranty	12 months





The weather-resilient double-sided unit

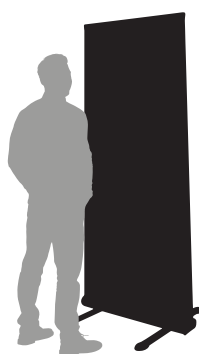
- Bespoke-printed graphics printed on 440gsm PVC
- Multi-screw-secured snap rail
- Large twin feet
- Three-part heavy-duty bungee pole
- Includes ground pegs to secure the unit in wind speeds of up to 24mph/38kph



Specification

Name	Thunder
Overall Width	895mm
Overall Height	2090mm
Overall Depth	810mm
Graphic Width	850mm
Graphic Height	2175mm
Visible Graphic Width	850mm
Visible Graphic Height	2025mm
Warranty	12 months
Weight	11kg

One size



Thunder
850mm-wide



Monsoon

Wall-mounted banner frame system with easy push-fit assembly

- Wall-mounted banner frame system with easy push-fit assembly. Graphic is secured with looped bungees.
- Banner printed onto 440gsm PVC with hems and eyelets all round.
- Replacement graphics easily ordered and installed.
- Beaufort scale: 5 (18-24mph/29-38kph)

Specification

Name	Medium	Large
Overall Width	2000mm	3000mm
Overall Height	1000mm	1250mm
Eyelets in graphic	8	8
Graphic Width	1840mm	2840mm
Graphic Height	840mm	1090mm