

PCQ CHARITY SCRAPPY SPINNER QUILT

Skill level: Easy



Large throw, 64" x 80",
8 x 10 block layout, 80 blocks



Small throw, 48" x 64",
6 x 8 block layout, 48 blocks

Jelly Roll and 2-1/2"
strip friendly.



Block, 8" finished
(8-1/2" unfinished)

For each block:

- Cut 1 strip of neutral or light fabric 2-1/2" wide by 8-1/2" long. A Jelly Roll or 2-1/2" WOF strip should yield 4 pieces, maybe 5.
- Cut assorted prints 2-1/2" by 6-1/2". A 2-1/2" WOF strip should yield 6 pieces.
- Sew pairs of colored strips together lengthwise, then sew two pairs together to make a strata.
- Sew a 2-1/2" light strip to one long side of the print strata.

Make the number of blocks indicated for the quilt size desired.

Arrange blocks according to the orientation shown in the images above so the light bars rotate.

Note: other layouts are possible such as stair steps or ladders.

Sew rows and columns together to complete the top.

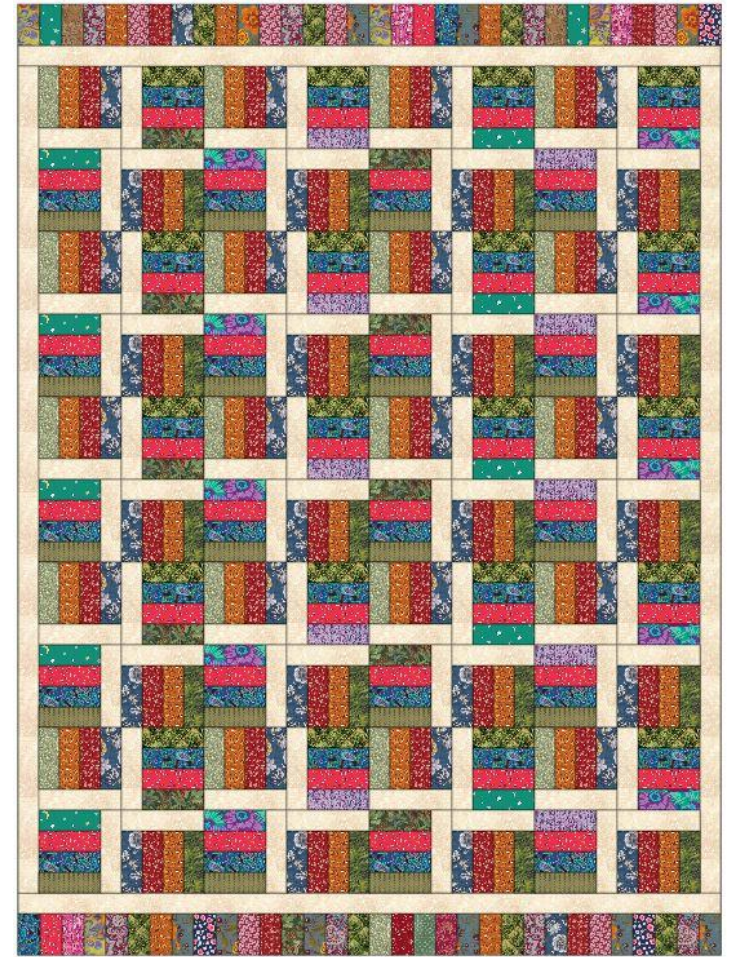
See reverse side for optional Twin Bed size with borders.

For all sizes, edge-stitching around the top is recommended.

Optional Twin size, 68" x 92": Make Large Throw size as above and add borders.

For borders:

- Cut 8, 2-1/2" by WOF strips of light fabric as used in the blocks.
- Piece 2 strips end-to-end. Make 4, for side borders and parts of top and bottom borders.
- Measure sides of quilt top; trim side border strips to length (should be 80-1/2")
- Mark the quilt top and the borders at the halves and quarters. Matching marks, attach side borders to top. Press toward the border.
- Cut assorted colored prints 2-1/2" by 4-1/2", total 68 pieces.
- Sew pairs of colored pieces together lengthwise, then fours. Join five of these units plus one pair into a strip for the top border and likewise for the bottom border (should be 68-1/2").
- Measure width of quilt top, and length of pieced top and bottom border strips (should be 68-1/2"). Trim light border strips to this length.
- Mark a light strip and a pieced border strip at the halves and quarters. Matching marks, join the light strip to the pieced border. Press toward the light strip.
- Mark the quilt top and the light edge of the borders at the halves and quarters. Matching marks, attach top and bottom borders to quilt top. Press toward the light border.



Optional Twin Bed Size

68" x 92"