

12 1U Server (Fixed)

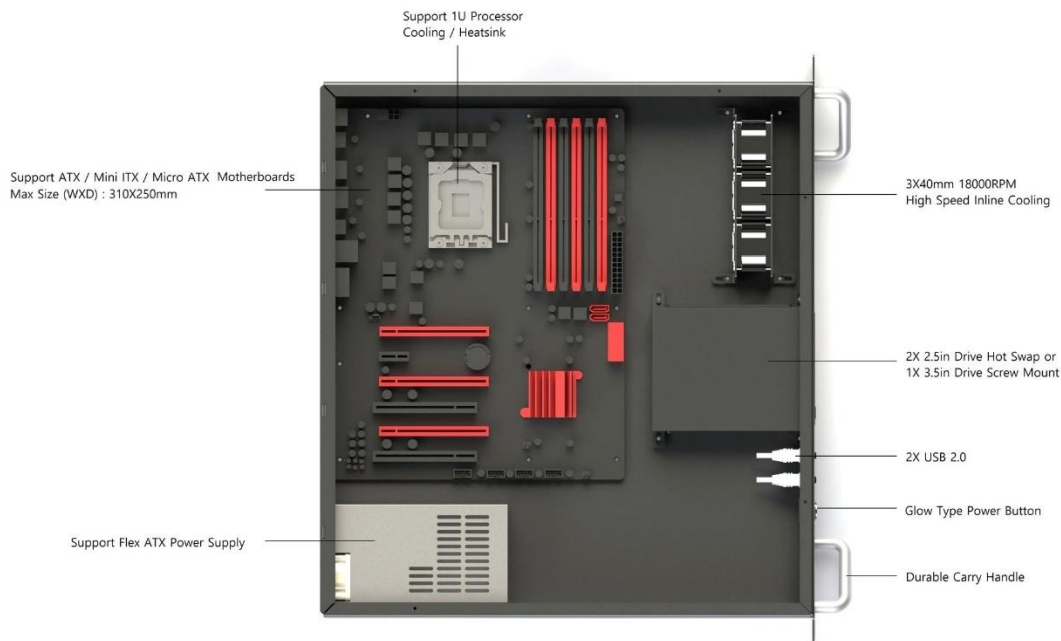
Model EM-1UPCG V1

12.1 Specification

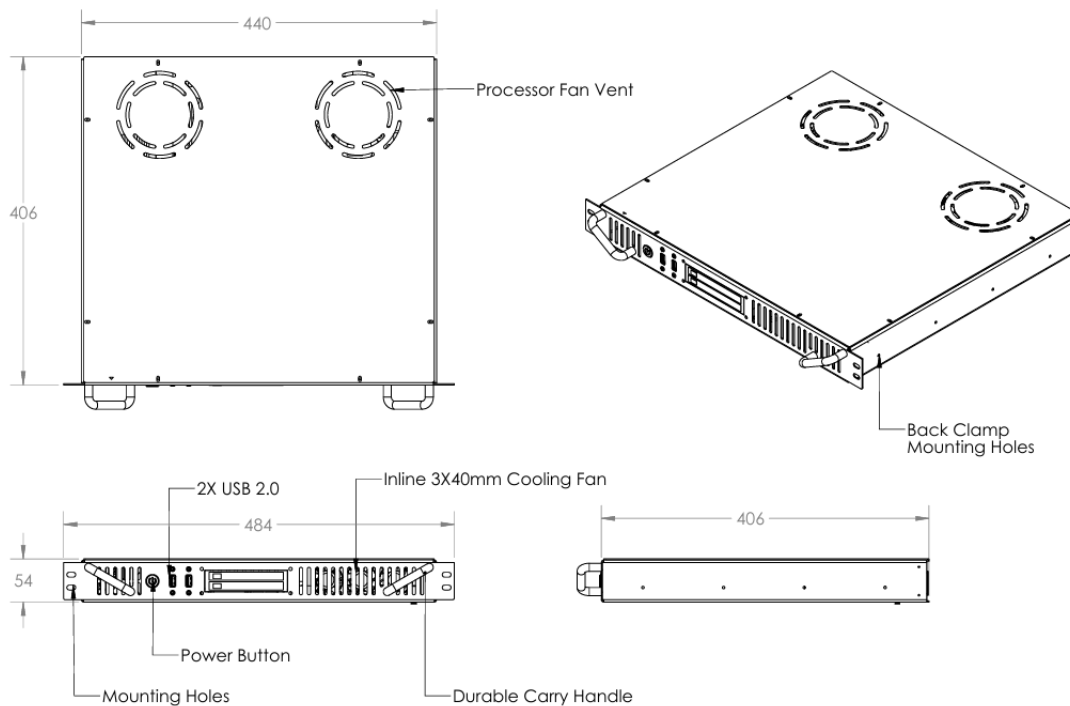


Product Description	Model No.	EM-1UPCG V1
	Type	19 Inch 1U Server
	Size LWH (mm)	484x406x54
	Weight KG	4
	Color	Black textured powder coated
Cooling	Yes	3 Nos 40X15mm Fan
GPU Support	GPU Support	No
	Maximum GPU Length Support	NA
Motherboard Support	Motherboard support type (WxD)	Mini ITX / Micro ATX (310X250mm)
	Maximum CPU Cooling Height	40mm
SMPS Support	SMPS Support type	Flex ATX
	Maximum SMPS Length	200mm
Hard Drive support	Hot Swap Support	Optionally Support Dual 2X 2.5" Drive Hot Swap
	2.5Inch SSD/HDD Support	1 on Screw mount or 2 on Hot swap
	3.5Inch SSD/HDD Support	1 on screw mount
Package Including	Power Button	1
	Installation nuts & bolts M5x10	10
	Allen Key 4mm	1
	SMPS Mounting Screw	0
	GPU Mounting Screw	0
	Motherboard Mounting Screw M3x10	10

12.2 Modules Assembly



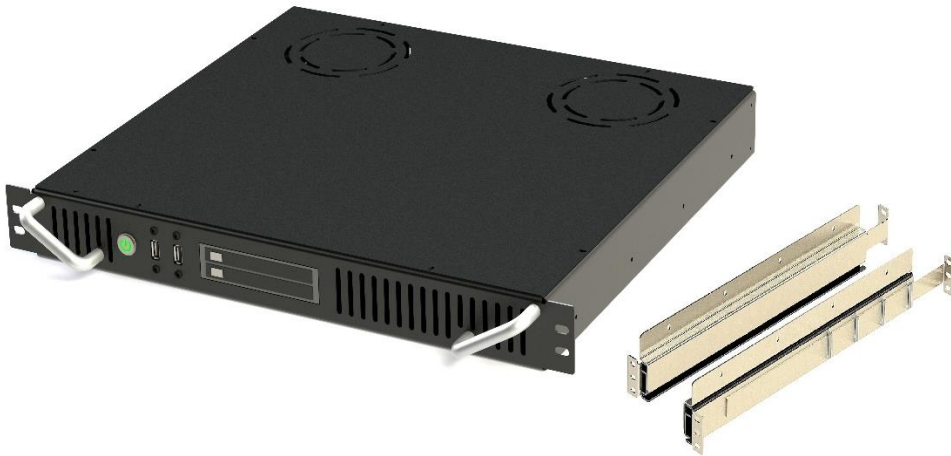
12.3 Product Drawings



13 1U Server (Telescopic)

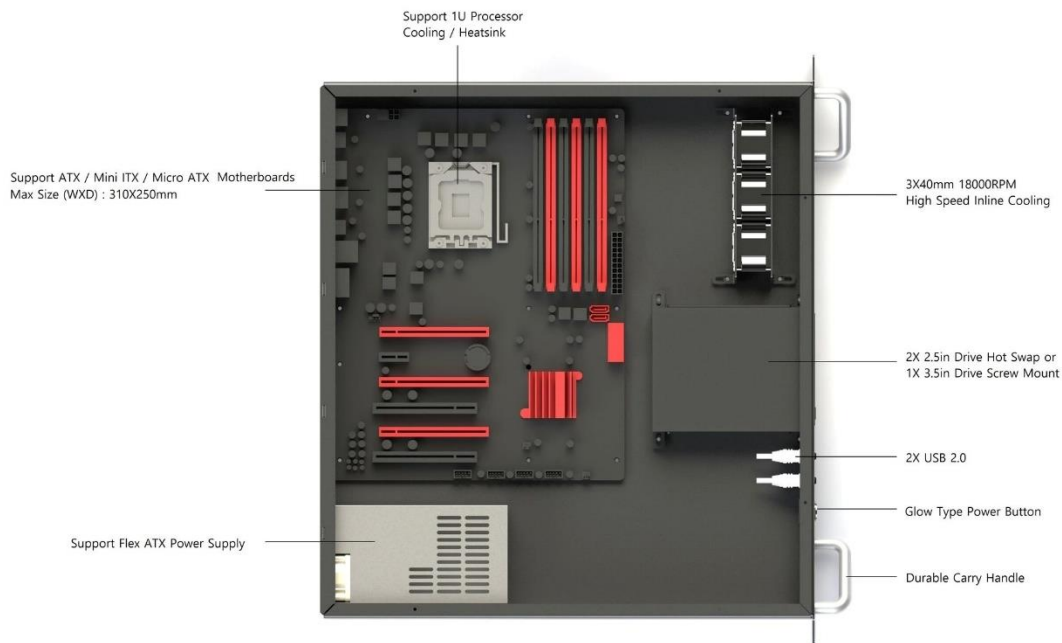
Model EM-1UPCGTC V1

13.1 Specification



Product Description	Model No.	EM-1UPCGTC V1
	Type	19 Inch 1U Server
	Size LWH (mm)	484x406x54
	Weight KG	4
	Color	Black textured powder coated
Cooling	Yes	3 Nos 40X15mm Fan
GPU Support	GPU Support	No
	Maximum GPU Length Support	NA
Motherboard Support	Motherboard support type (WxD)	Mini ITX / Micro ATX (310X250mm)
	Maximum CPU Cooling Height	40mm
SMPS Support	SMPS Support type	Flex ATX
	Maximum SMPS Length	200mm
Hard Drive support	Hot Swap Support	Optionally Support Dual 2X 2.5" Drive Hot Swap
	2.5Inch SSD/HDD Support	1 on Screw mount or 2 on Hot swap
	3.5Inch SSD/HDD Support	1 on screw mount
Package Including	Power Button	1
	Installation nuts & bolts M5x10	10
	Allen Key 4mm	1
	SMPS Mounting Screw	0
	GPU Mounting Screw	0
	Motherboard Mounting Screw M3x10	10

13.2 Modules Assembly



13.3 Product Drawings

