

Waveform Trigger Source
 Trigger Level(s)
 Pre-Trigger/Record Time
 Sample Rate
 Setup File Name
 Operator

Vert at October 6, 2021 10:18:54
 Geo 0.0200 in/s, Mic 0.01029 psi
 0.50 sec/8.0 sec (Fixed)
 4096 sps
 Spicewood Hwy 71 - Station 1.mmb
 Operator

Serial Number
 Model Number
 Battery Level
 Unit Calibration
 Event File Name
 USB Sensor Support

UM8173
 Micromate ISEE 10.90FB
 3.8 volts
 September 2, 2021 by Instantel
 UM8173_20211006101854.IDFW
 Disabled

Notes

Location Station 1
 Client Spicewood Crushed Stone
 Company Hwy 71 Quarry
 General Notes IGS, Inc.

Extended Note N30.49572 W98.21577

Post Event Notes No text to be displayed.

Geophone

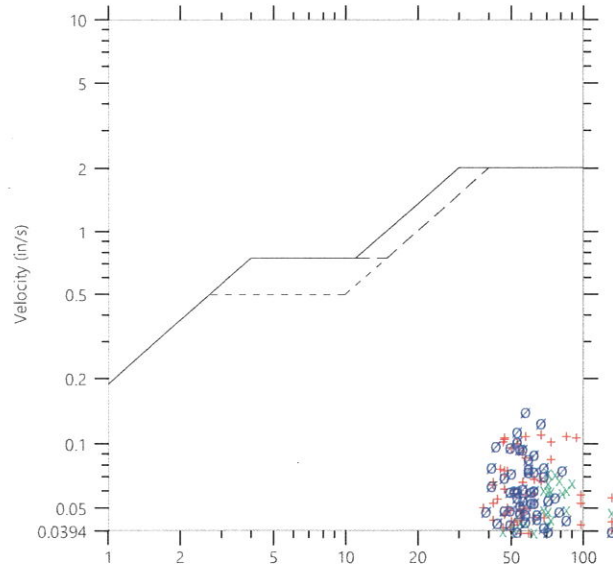
	Tran	Vert	Long
Peak Particle Velocity	0.1126 in/s	0.0748 in/s	0.1431 in/s
Zero Crossing Frequency	66.1 Hz	70.6 Hz	56.9 Hz
Time (Relative to Trigger)	0.396 sec	0.084 sec	0.252 sec
Peak Acceleration	0.168 g	0.099 g	0.188 g
Peak Displacement	0.000 in	0.000 in	0.000 in
Sensor Check	Passed	Passed	Passed
Frequency	7.5 Hz	7.5 Hz	7.1 Hz
Overswing Ratio	4.1	3.3	3.6

Peak Vector Sum 0.1592 in/s at 0.252 sec

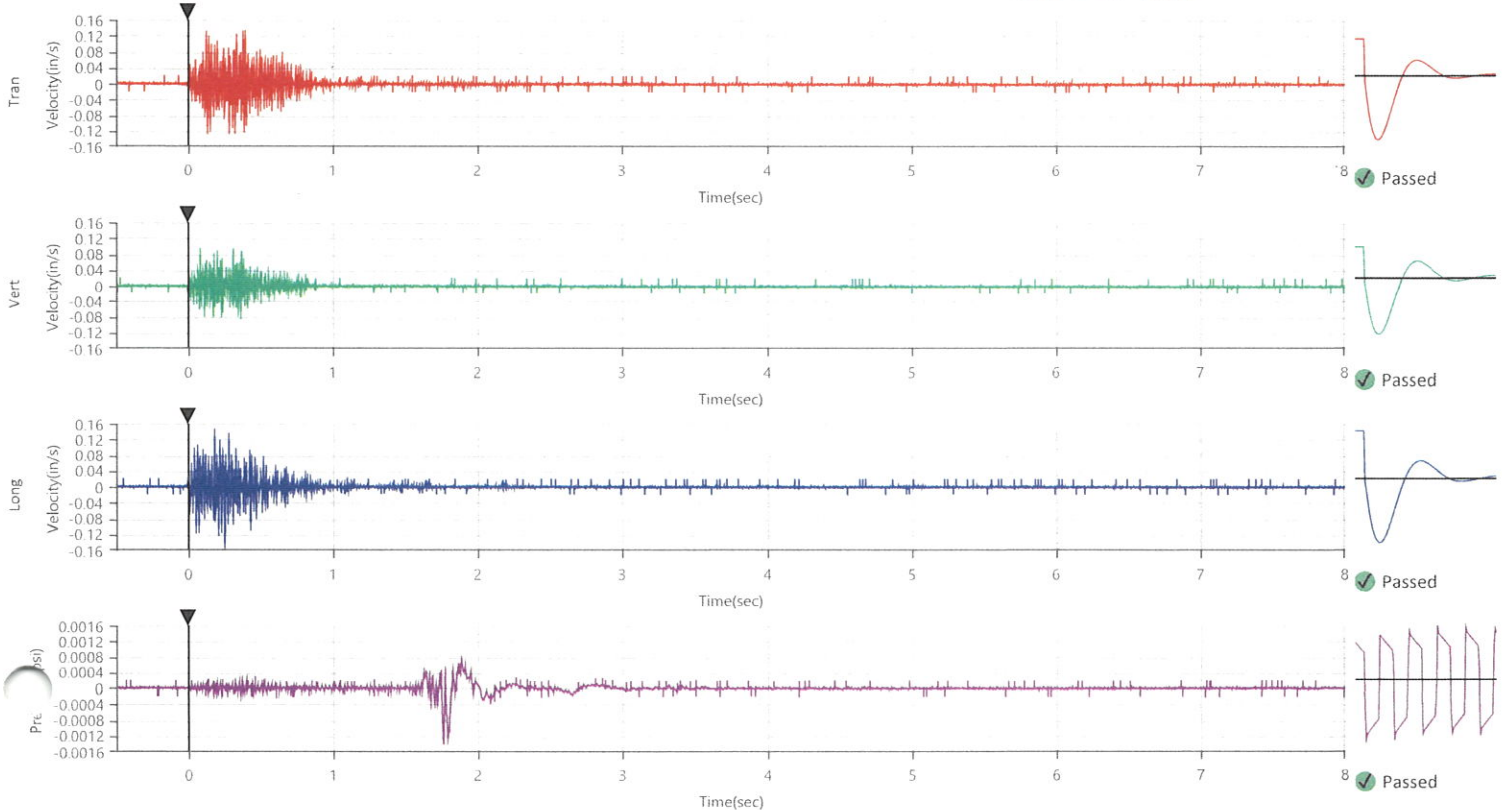
ISEE Linear Microphone

Peak Sound Pressure Level 0.001287 psi
 Peak Sound Pressure Level 112.9 dB(L)
 Time (Relative to Trigger) 1.760 sec
 Zero Crossing Frequency 24.1 Hz
 Sensor Check Passed
 Frequency 19.7 Hz
 Test Amplitude 1392 mv

USBM RI8507 And OSMRE
 Velocity versus Frequency (Zero Crossing)



Frequency (Hz) Sensor Check
 + Tran x Vert o Long



Waveform Trigger Source
 Trigger Level(s)
 Pre-Trigger/Record Time
 Sample Rate
 Setup File Name
 Operator

Vert at October 6, 2021 10:18:54
 Geo 0.0200 in/s, Mic 0.01029 psi
 0.50 sec/8.0 sec (Fixed)
 4096 sps
 Spicewood Hwy 71 - Station 1.mmb
 Operator

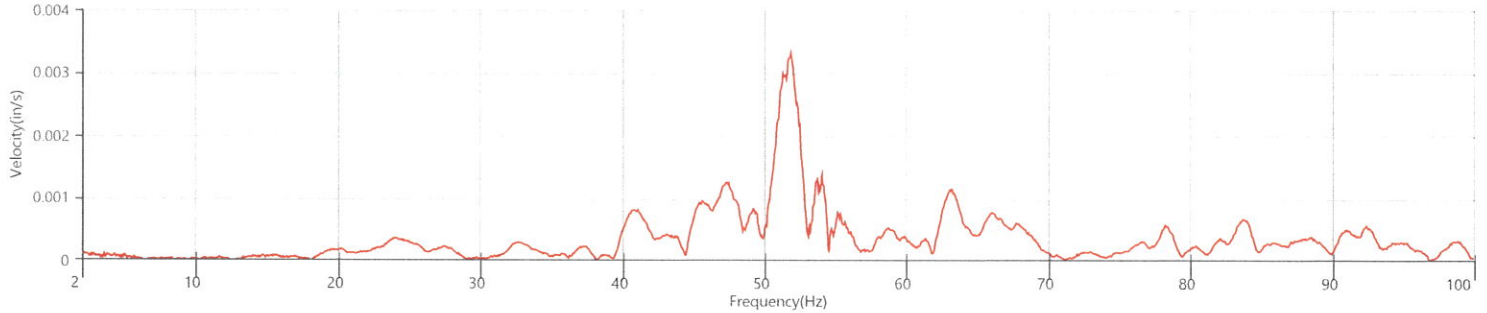
Serial Number
 Model Number
 Battery Level
 Unit Calibration
 Event File Name
 USB Sensor Support

UM8173
 Micromate ISEE 10.90FB
 3.8 volts
 September 2, 2021 by Instantel
 UM8173_20211006101854.IDFW
 Disabled

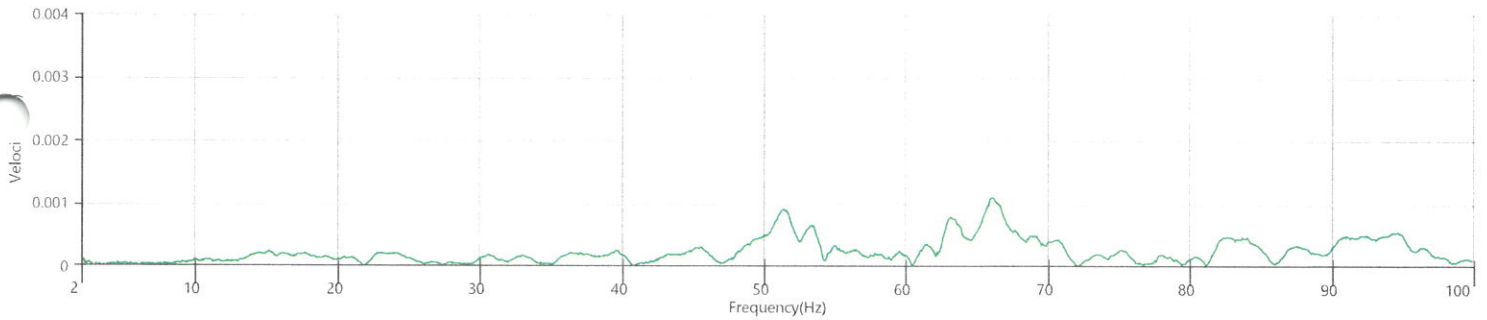
Notes
 Location Station 1
 Client Spicewood Crushed Stone
 Company Hwy 71 Quarry
 General Notes IGS, Inc.

Extended Note N30.49572 W98.21577
 Post Event Notes No text to be displayed.

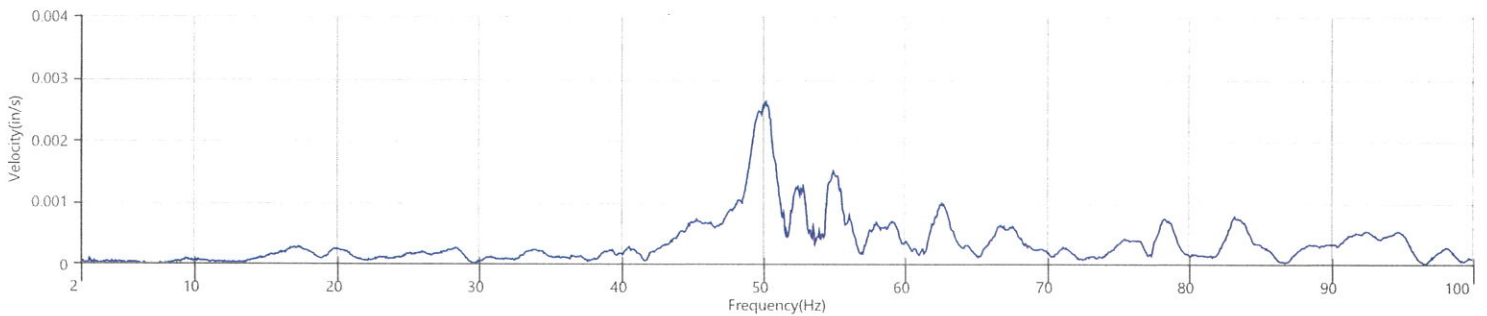
Tran - Dominant Frequency 51.8 Hz, Amplitude 0.0033 in/s (Peak Particle Velocity: 0.1126 in/s)



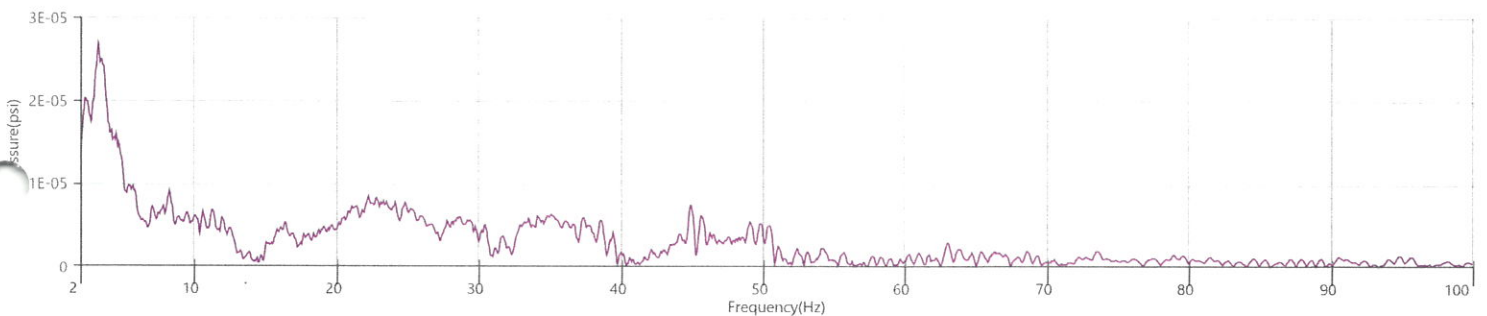
Vert - Dominant Frequency 66.1 Hz, Amplitude 0.0011 in/s (Peak Particle Velocity: 0.0748 in/s)



Long - Dominant Frequency 50.2 Hz, Amplitude 0.0026 in/s (Peak Particle Velocity: 0.1431 in/s)



Mic - Dominant Frequency 3.2 Hz, Amplitude 0.00003 psi (Peak Sound Pressure Level: 0.001287 psi)



Waveform Trigger Source
 Trigger Level(s)
 Pre-Trigger/Record Time
 Sample Rate
 Output File Name
 Operator

Tran at October 6, 2021 10:18:54
 Geo 0.0200 in/s, Mic 0.01029 psi
 0.50 sec/8.0 sec (Fixed)
 4096 sps
 Spicewood Hwy 71 - Station 2.mmb
 Operator

Serial Number
 Model Number
 Battery Level
 Unit Calibration
 Event File Name
 USB Sensor Support

UM8826
 Micromate ISEE 10.90
 3.8 volts
 February 11, 2021 by InstanTel
 UM8826_20211006101854.IDFW
 Disabled

Notes

Location Station 2
 Client Spicewood Crushed Stone
 Company Hwy 71
 General Notes IGS, Inc

Extended Note N30.49650 W21572
 Post Event Notes No text to be displayed.

Geophone

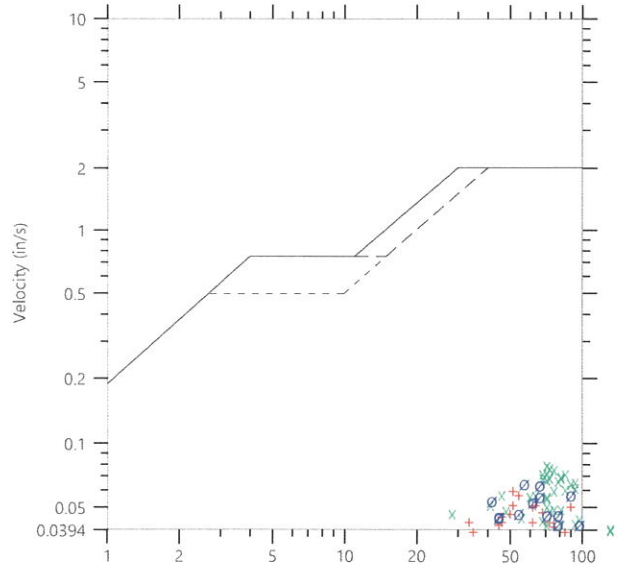
	Tran	Vert	Long
Peak Particle Velocity	0.0618 in/s	0.0804 in/s	0.0664 in/s
Zero Crossing Frequency	51.2 Hz	70.6 Hz	56.9 Hz
Time (Relative to Trigger)	0.151 sec	0.447 sec	0.228 sec
Peak Acceleration	0.079 g	0.105 g	0.082 g
Peak Displacement	0.000 in	0.000 in	0.000 in
Sensor Check	Passed	Passed	Passed
Frequency	7.3 Hz	7.5 Hz	7.3 Hz
Overswing Ratio	4.5	3.6	4.5

Peak Vector Sum 0.0917 in/s at 0.227 sec

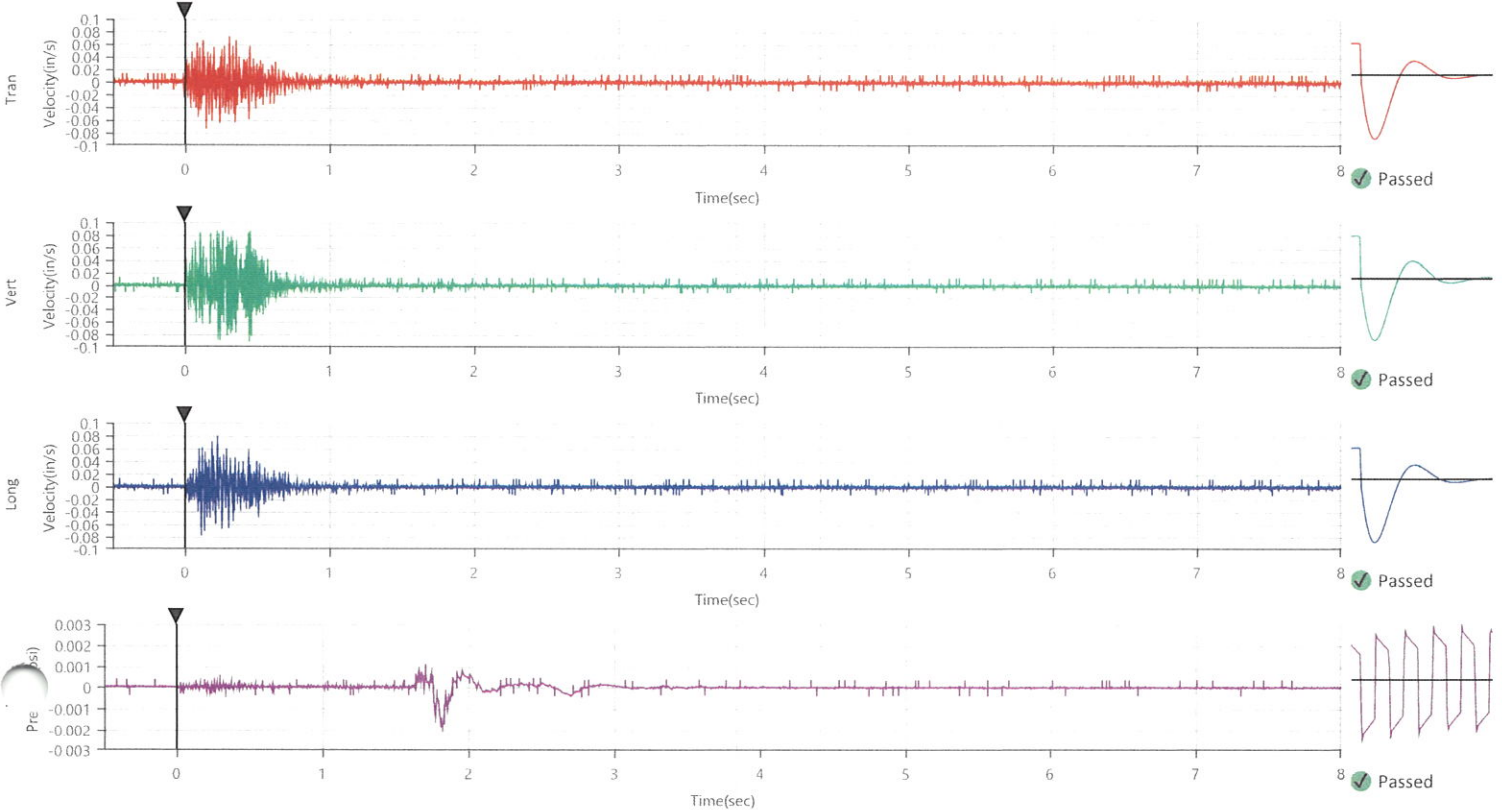
ISEE Linear Microphone

Peak Sound Pressure Level 0.001827 psi
 Peak Sound Pressure Level 116.0 dB(L)
 Time (Relative to Trigger) 1.814 sec
 Zero Crossing Frequency 3.9 Hz
 Sensor Check Passed
 Frequency 19.7 Hz
 Test Amplitude 1353 mv

USBM RI8507 And OSMRE
 Velocity versus Frequency (Zero Crossing)



Frequency (Hz) Sensor Check
 + Tran x Vert o Long



Waveform Trigger Source
 Trigger Level(s)
 Pre-Trigger/Record Time
 Sample Rate
 Output File Name
 Operator

Tran at October 6, 2021 10:18:54
 Geo 0.0200 in/s, Mic 0.01029 psi
 0.50 sec/8.0 sec (Fixed)
 4096 sps
 Spicewood Hwy 71 - Station 2.mmb
 Operator

Serial Number
 Model Number
 Battery Level
 Unit Calibration
 Event File Name
 USB Sensor Support

UM8826
 Micromate ISEE 10.90
 3.8 volts
 February 11, 2021 by Instantel
 UM8826_20211006101854.IDFW
 Disabled

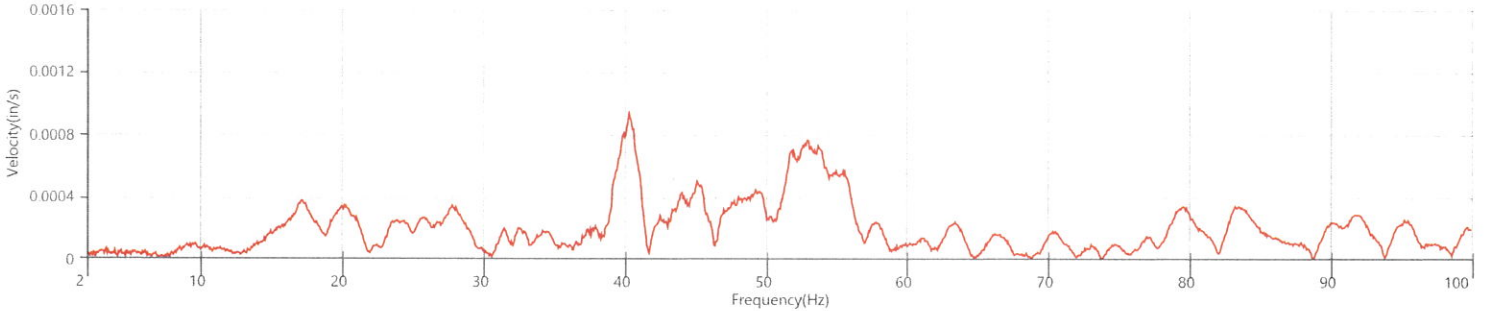
Notes

Location Station 2
 Client Spicewood Crushed Stone
 Company Hwy 71
 General Notes IGS, Inc

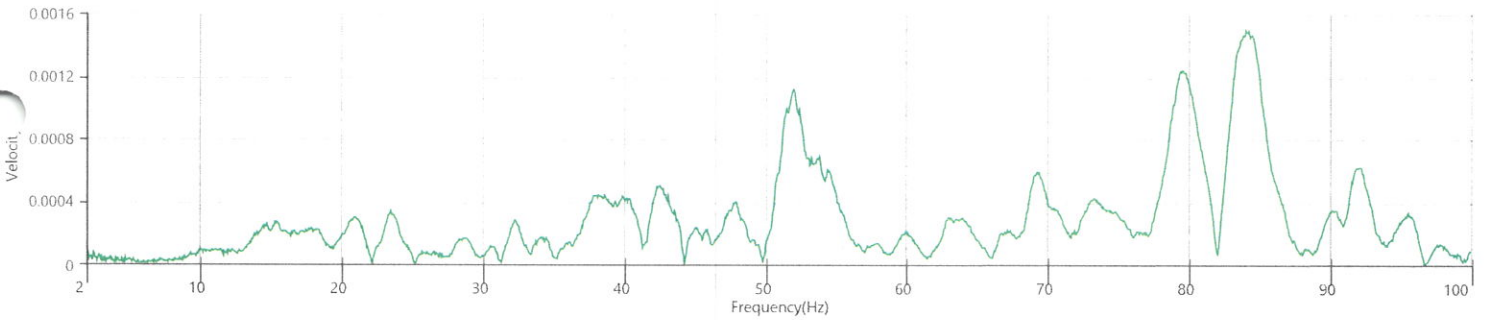
Extended Note N30.49650 W21572

Post Event Notes No text to be displayed.

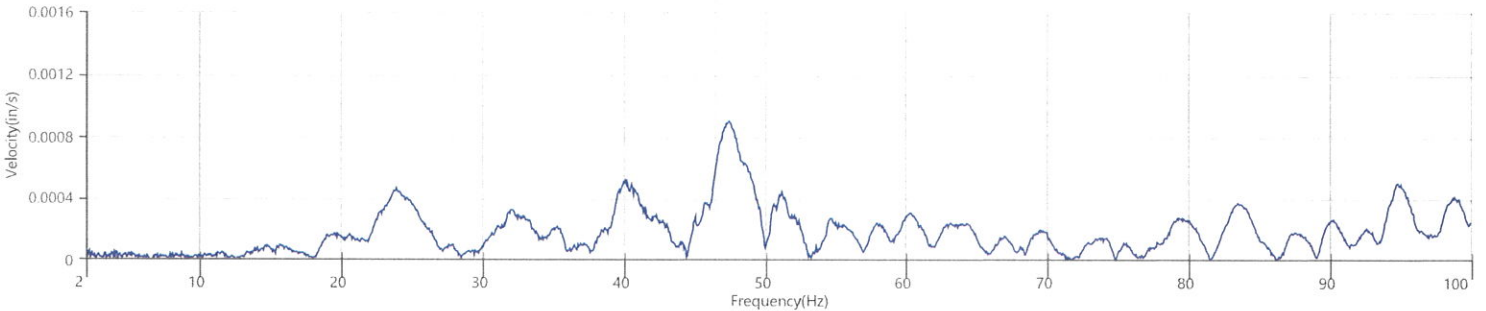
Tran - Dominant Frequency 40.3 Hz, Amplitude 0.0009 in/s (Peak Particle Velocity: 0.0618 in/s)



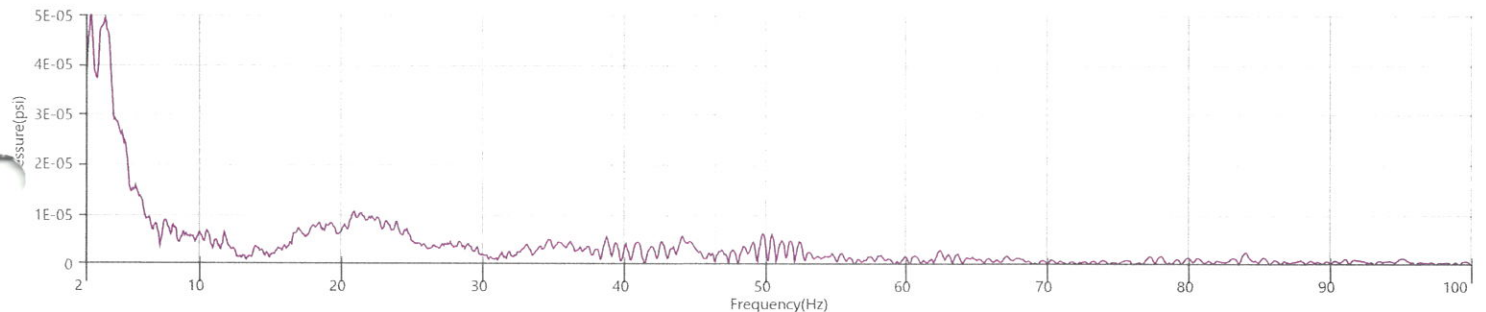
Vert - Dominant Frequency 84.0 Hz, Amplitude 0.0015 in/s (Peak Particle Velocity: 0.0804 in/s)



Long - Dominant Frequency 47.4 Hz, Amplitude 0.0009 in/s (Peak Particle Velocity: 0.0664 in/s)



Mic - Dominant Frequency 2.4 Hz, Amplitude 0.00005 psi (Peak Sound Pressure Level: 0.001827 psi)



Waveform Trigger Source
 Trigger Level(s)
 Pre-Trigger/Record Time
 Sample Rate
 Output File Name
 Operator

Tran at October 6, 2021 10:18:54
 Geo 0.0200 in/s, Mic 0.01029 psi
 0.50 sec/8.0 sec (Fixed)
 4096 sps
 Spicewood Hwy 71 - Station 3.mmb
 Operator

Serial Number
 Model Number
 Battery Level
 Unit Calibration
 Event File Name
 USB Sensor Support

UM6460
 Micromate ISEE 10.90FB
 3.8 volts
 September 9, 2021 by Instantel
 UM6460_20211006101854.IDFW
 Disabled

Notes

Location Station 3
 Client Spicewood Crushed Stone
 Company Hwy 71 Quarry
 General Notes IGS, Inc.

Extended Note N30.49742 W98.21566

Post Event Notes No text to be displayed.

Geophone

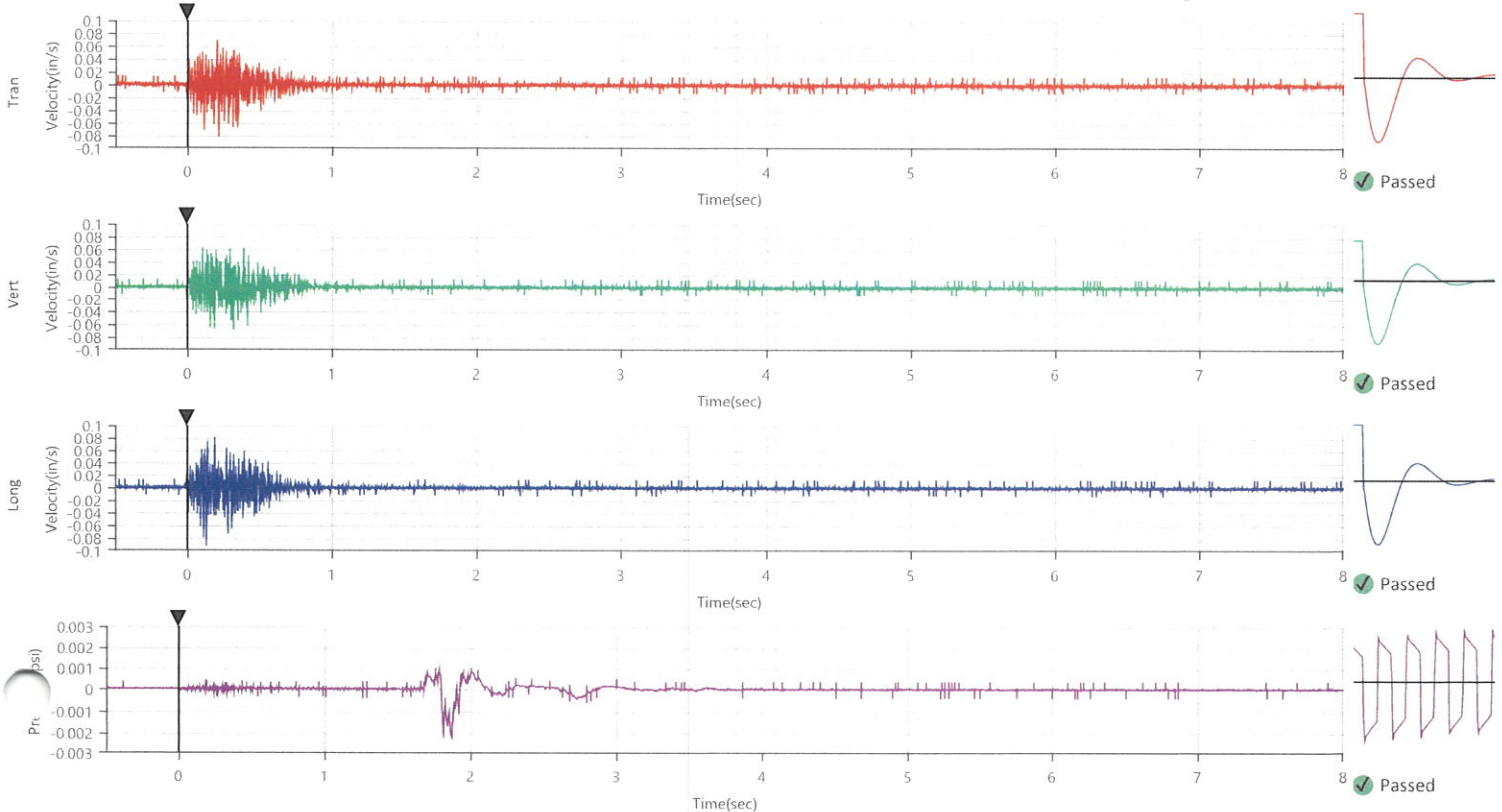
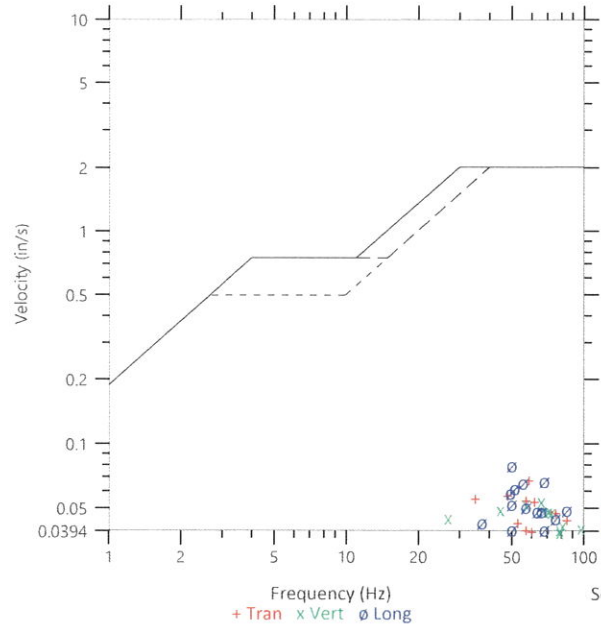
	Tran	Vert	Long
Peak Particle Velocity	0.0695 in/s	0.0565 in/s	0.0801 in/s
Zero Crossing Frequency	58.5 Hz	>100 Hz	50.0 Hz
Time (Relative to Trigger)	0.218 sec	0.321 sec	0.135 sec
Peak Acceleration	0.109 g	0.099 g	0.115 g
Peak Displacement	0.000 in	0.000 in	0.000 in
Sensor Check	✓ Passed	✓ Passed	✓ Passed
Frequency	7.5 Hz	7.3 Hz	7.3 Hz
Overswing Ratio	3.2	3.7	3.5

Peak Vector Sum 0.0915 in/s at 0.114 sec

ISEE Linear Microphone

Peak Sound Pressure Level	0.002046 psi
Peak Sound Pressure Level	117.0 dB(L)
Time (Relative to Trigger)	1.866 sec
Zero Crossing Frequency	4.9 Hz
Sensor Check	✓ Passed
Frequency	19.7 Hz
Test Amplitude	1325 mv

USBM R18507 And OSMRE
 Velocity versus Frequency (Zero Crossing)



Waveform Trigger Source
 Trigger Level(s)
 Pre-Trigger/Record Time
 Sample Rate
 Output File Name
 Operator

Tran at October 6, 2021 10:18:54
 Geo 0.0200 in/s, Mic 0.01029 psi
 0.50 sec/8.0 sec (Fixed)
 4096 sps
 Spicewood Hwy 71 - Station 3.mmb
 Operator

Serial Number
 Model Number
 Battery Level
 Unit Calibration
 Event File Name
 USB Sensor Support

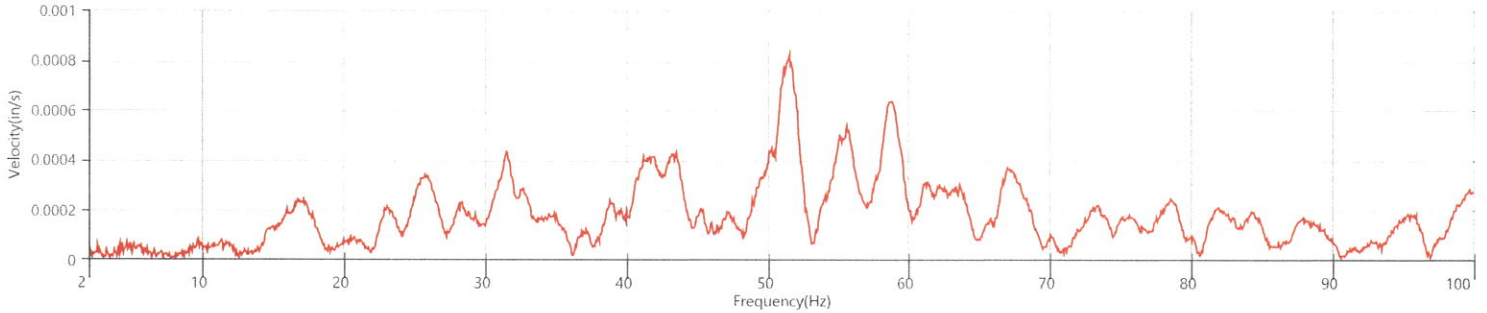
UM6460
 Micromate ISEE 10.90FB
 3.8 volts
 September 9, 2021 by InstanTel
 UM6460_20211006101854.IDFW
 Disabled

Notes
 Location
 Client
 Company
 General Notes

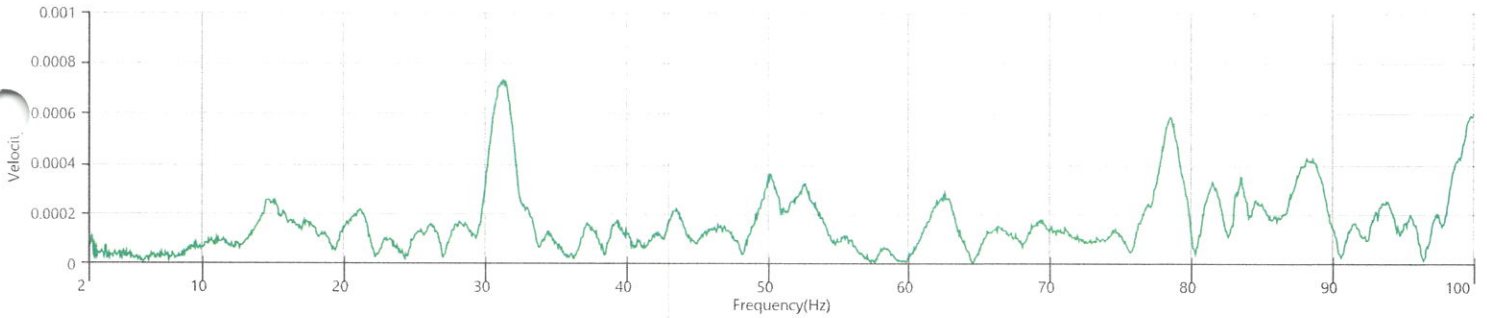
Station 3
 Spicewood Crushed Stone
 Hwy 71 Quarry
 IGS, Inc.

Extended Note N30.49742 W98.21566
 Post Event Notes No text to be displayed.

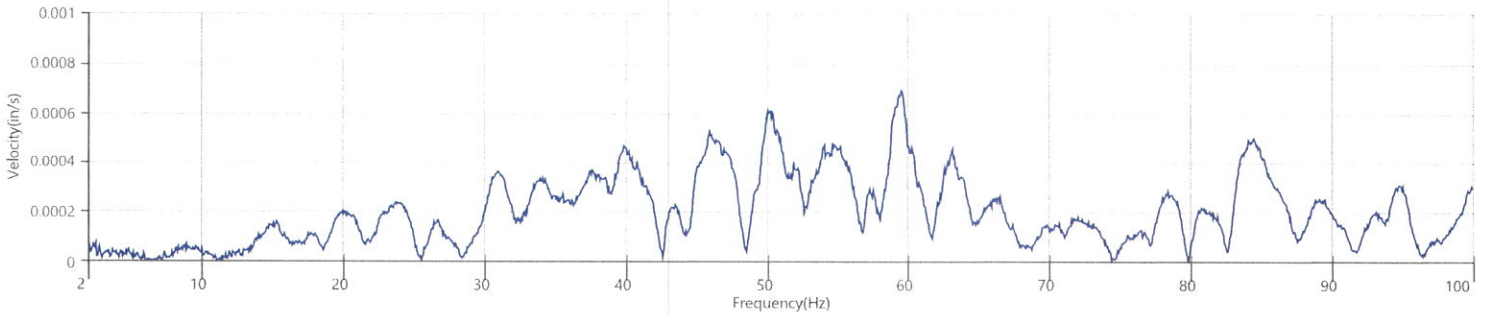
Tran - Dominant Frequency 51.5 Hz, Amplitude 0.0008 in/s (Peak Particle Velocity: 0.0695 in/s)



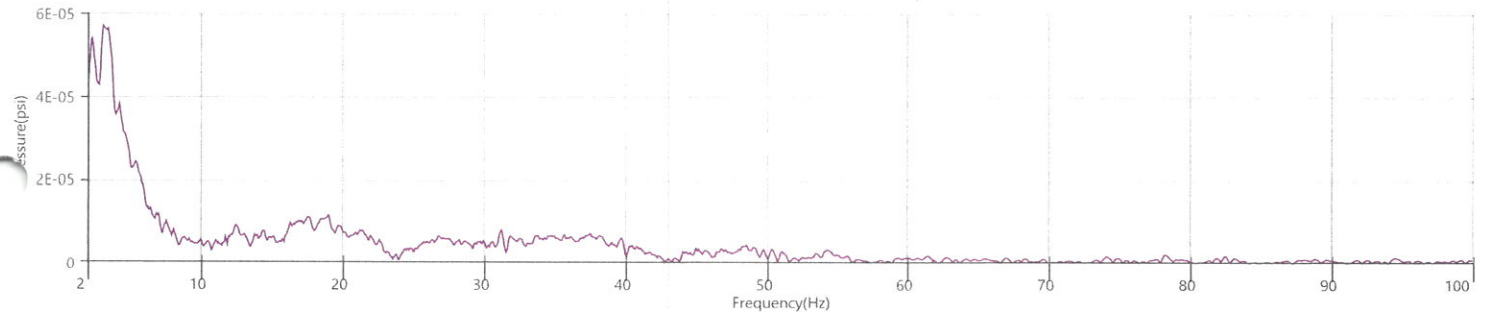
Vert - Dominant Frequency 31.3 Hz, Amplitude 0.0007 in/s (Peak Particle Velocity: 0.0565 in/s)



Long - Dominant Frequency 59.5 Hz, Amplitude 0.0007 in/s (Peak Particle Velocity: 0.0801 in/s)



Mic - Dominant Frequency 3.1 Hz, Amplitude 0.00006 psi (Peak Sound Pressure Level: 0.002046 psi)



Waveform Trigger Source
 Trigger Level(s)
 Pre-Trigger/Record Time
 Sample Rate
 Up File Name
 Operator

Long at October 6, 2021 10:18:54
 Geo 0.0200 in/s, Mic 0.01029 psi
 0.50 sec/8.0 sec (Fixed)
 4096 sps
 Spicewood Hwy 71 - Station 4.mmb
 Operator

Serial Number
 Model Number
 Battery Level
 Unit Calibration
 Event File Name
 USB Sensor Support

UM7153
 Micromate ISEE 10.90FB
 3.8 volts
 September 16, 2021 by InstanTel
 UM7153_20211006101854.IDFW
 Disabled

Notes

Location Station 4
 Client Spicewood Crushed Stone
 Company Hwy 71 Quarry
 General Notes IGS, Inc.

Extended Note N30.49821 W98.21578

Post Event Notes No text to be displayed.

Geophone

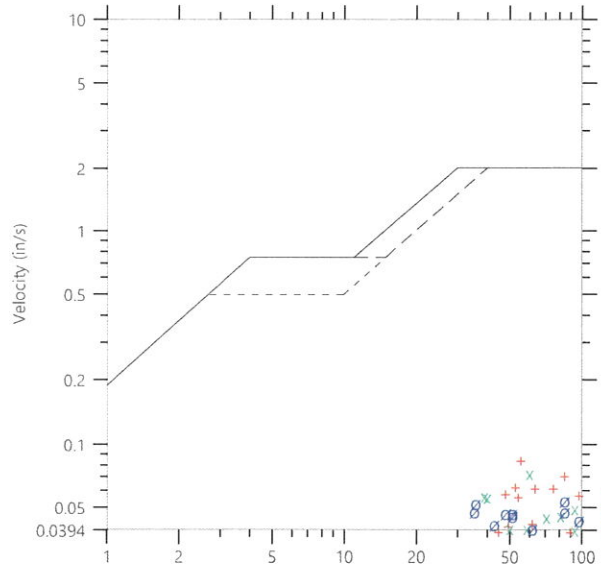
	Tran	Vert	Long
Peak Particle Velocity	0.0860 in/s	0.0735 in/s	0.0549 in/s
Zero Crossing Frequency	55.4 Hz	62.1 Hz	85.3 Hz
Time (Relative to Trigger)	0.330 sec	0.187 sec	0.244 sec
Peak Acceleration	0.132 g	0.076 g	0.095 g
Peak Displacement	0.000 in	0.000 in	0.000 in
Sensor Check	Passed	Passed	Passed
Frequency	7.3 Hz	7.1 Hz	7.3 Hz
Overswing Ratio	3.7	3.7	4.6

Peak Vector Sum 0.0864 in/s at 0.330 sec

ISEE Linear Microphone

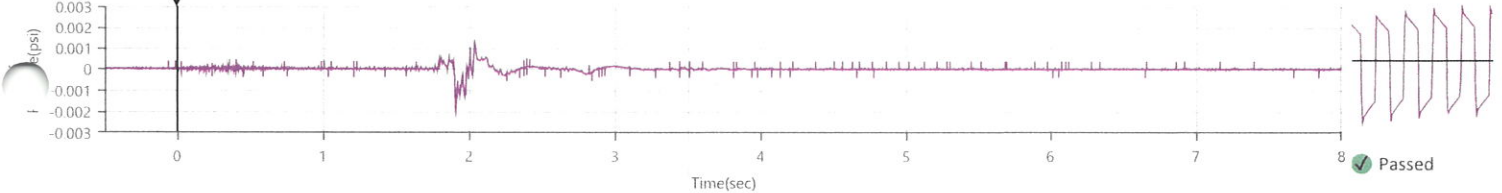
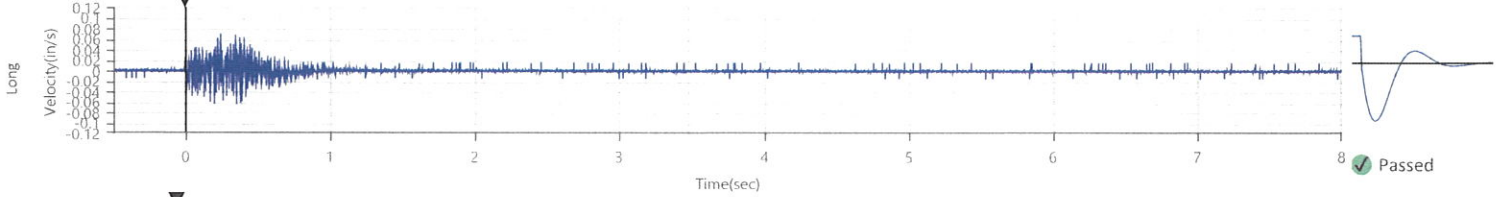
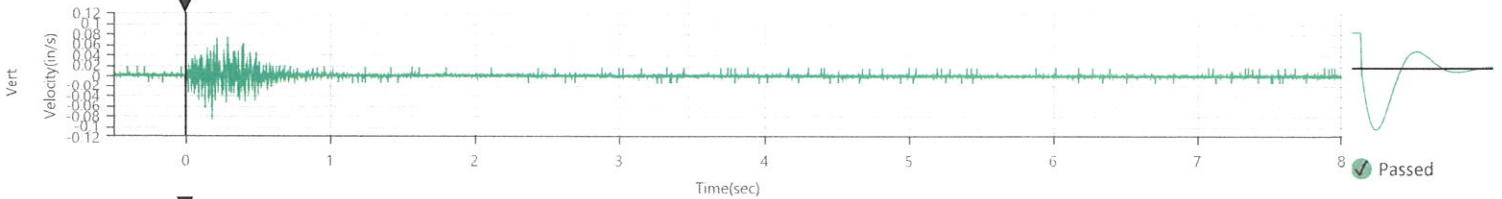
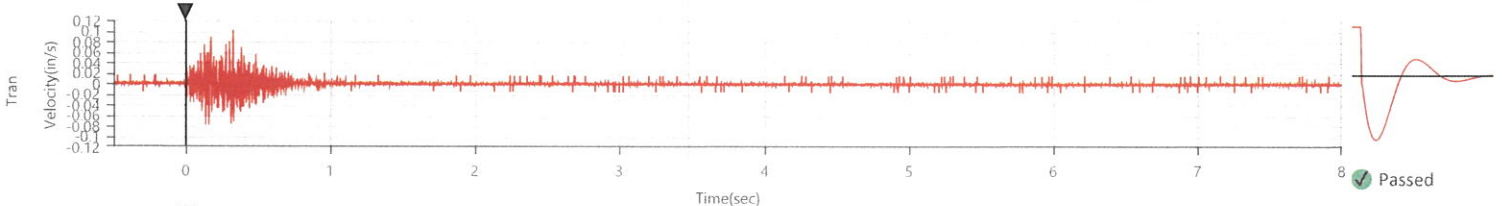
Peak Sound Pressure Level 0.001868 psi
 Peak Sound Pressure Level 116.2 dB(L)
 Time (Relative to Trigger) 1.912 sec
 Zero Crossing Frequency 5.9 Hz
 Sensor Check Passed
 Frequency 19.7 Hz
 Test Amplitude 1403 mv

USBM R18507 And OSMRE
 Velocity versus Frequency (Zero Crossing)



Frequency (Hz)
 + Tran x Vert o Long

Sensor Check



Waveform Trigger Source
 Trigger Level(s)
 Pre-Trigger/Record Time
 Sample Rate
 File Name
 Operator

Long at October 6, 2021 10:18:54
 Geo 0.0200 in/s, Mic 0.01029 psi
 0.50 sec/8.0 sec (Fixed)
 4096 sps
 Spicewood Hwy 71 - Station 4.mmb
 Operator

Serial Number
 Model Number
 Battery Level
 Unit Calibration
 Event File Name
 USB Sensor Support

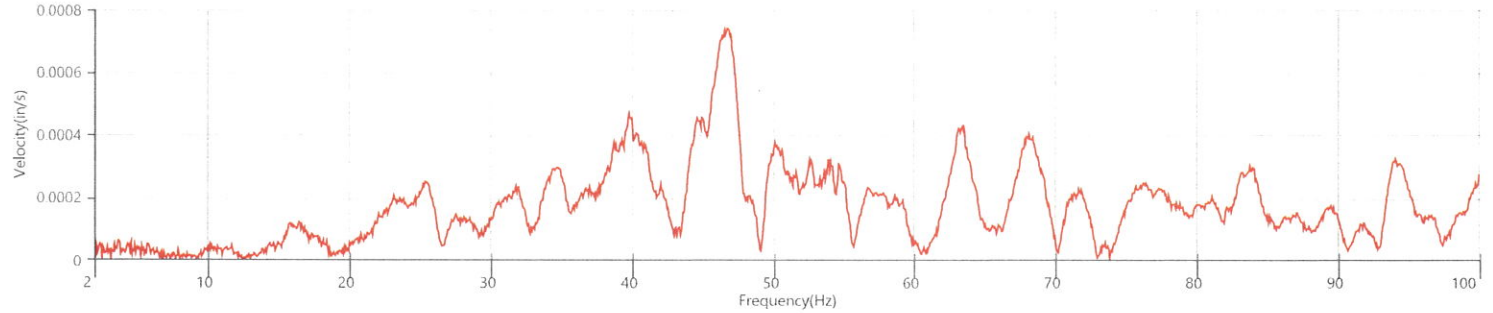
UM7153
 Micromate ISEE 10.90FB
 3.8 volts
 September 16, 2021 by Instantel
 UM7153_20211006101854.IDFW
 Disabled

Notes

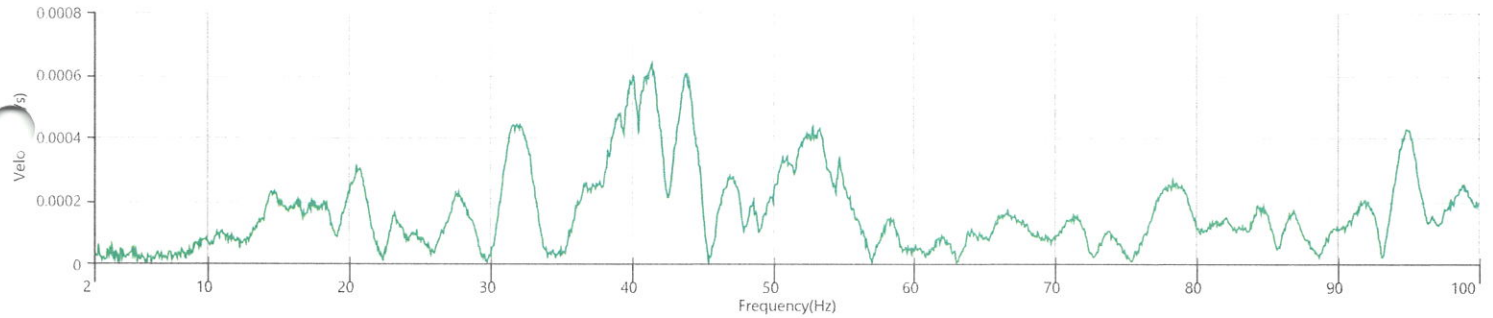
Location Station 4
 Client Spicewood Crushed Stone
 Company Hwy 71 Quarry
 General Notes IGS, Inc.

Extended Note N30.49821 W98.21578
 Post Event Notes No text to be displayed.

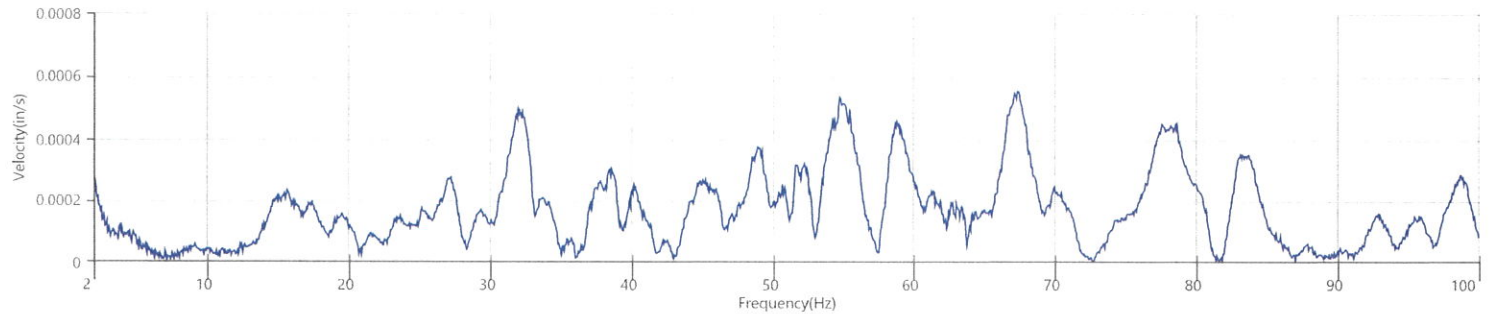
Tran - Dominant Frequency 46.8 Hz, Amplitude 0.0007 in/s (Peak Particle Velocity: 0.0860 in/s)



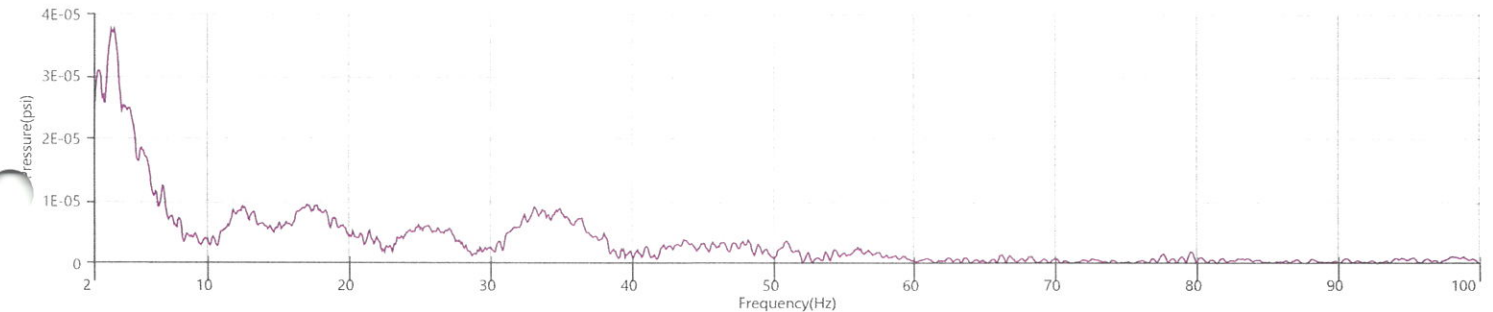
Vert - Dominant Frequency 41.4 Hz, Amplitude 0.0006 in/s (Peak Particle Velocity: 0.0735 in/s)



Long - Dominant Frequency 67.3 Hz, Amplitude 0.0006 in/s (Peak Particle Velocity: 0.0549 in/s)



Mic - Dominant Frequency 3.4 Hz, Amplitude 0.00004 psi (Peak Sound Pressure Level: 0.001868 psi)



Waveform Trigger Source
 Trigger Level(s)
 Pre-Trigger/Record Time
 Sample Rate
 Setup File Name
 Operator

Tran at October 6, 2021 10:18:54
 Geo 0.0200 in/s, Mic 0.01029 psi
 0.50 sec/8.0 sec (Fixed)
 4096 sps
 Spicewood Hwy 71 - Station 5.mmb
 Operator

Serial Number
 Model Number
 Battery Level
 Unit Calibration
 Event File Name
 USB Sensor Support

UM8232
 Micromate ISEE 10.90
 3.8 volts
 February 18, 2021 by InstanTel
 UM8232_20211006101854.IDFW
 Disabled

Notes

Location Station 5
 Client Spicewood Crushed Stone
 Company Hwy 71 Quarry
 General Notes IGS, Inc.

Extended Note N30.49911 W98.21538

Post Event Notes No text to be displayed.

Geophone

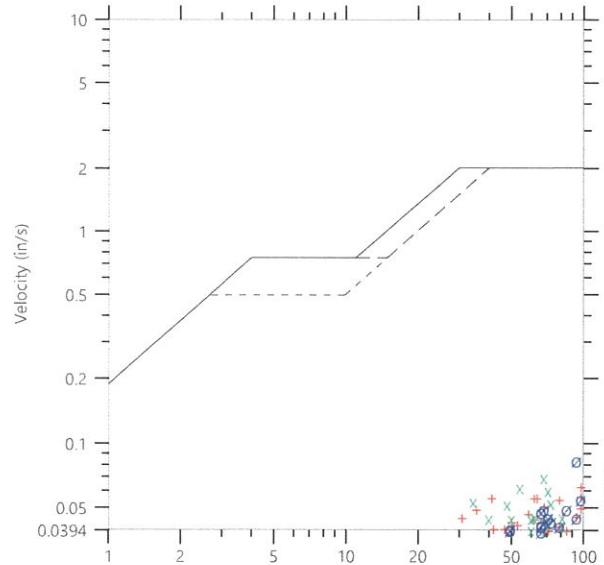
	Tran	Vert	Long
Peak Particle Velocity	0.0639 in/s	0.0704 in/s	0.0841 in/s
Zero Crossing Frequency	97.5 Hz	68.3 Hz	93.1 Hz
Time (Relative to Trigger)	0.160 sec	0.411 sec	0.349 sec
Peak Acceleration	0.115 g	0.089 g	0.145 g
Peak Displacement	0.000 in	0.000 in	0.000 in
Sensor Check	Passed	Passed	Passed
Frequency	7.5 Hz	7.7 Hz	7.3 Hz
Overswing Ratio	3.6	3.1	4.4

Peak Vector Sum 0.1011 in/s at 0.159 sec

ISEE Linear Microphone

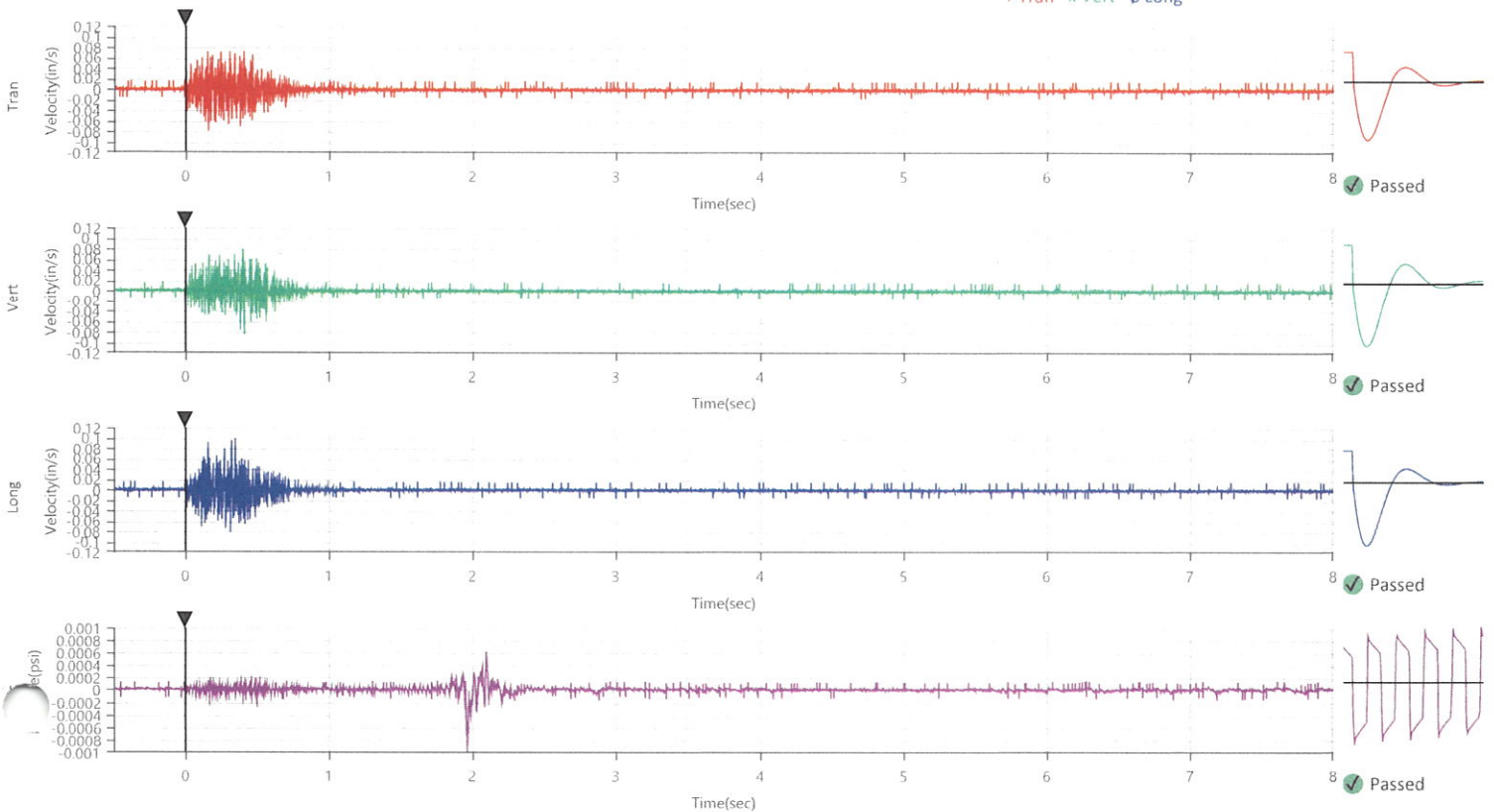
Peak Sound Pressure Level 0.000891 psi
 Peak Sound Pressure Level 109.7 dB(L)
 Time (Relative to Trigger) 1.962 sec
 Zero Crossing Frequency 10.4 Hz
 Sensor Check Passed
 Frequency 20.5 Hz
 Test Amplitude 1384 mv

USBM RI8507 And OSMRE
 Velocity versus Frequency (Zero Crossing)



Frequency (Hz)
 + Tran x Vert o Long

Sensor Check



Waveform Trigger Source
 Trigger Level(s)
 Pre-Trigger/Record Time
 Sample Rate
 Setup File Name
 Operator

Tran at October 6, 2021 10:18:54
 Geo 0.0200 in/s, Mic 0.01029 psi
 0.50 sec/8.0 sec (Fixed)
 4096 sps
 Spicewood Hwy 71 - Station 5.mmb
 Operator

Serial Number
 Model Number
 Battery Level
 Unit Calibration
 Event File Name
 USB Sensor Support

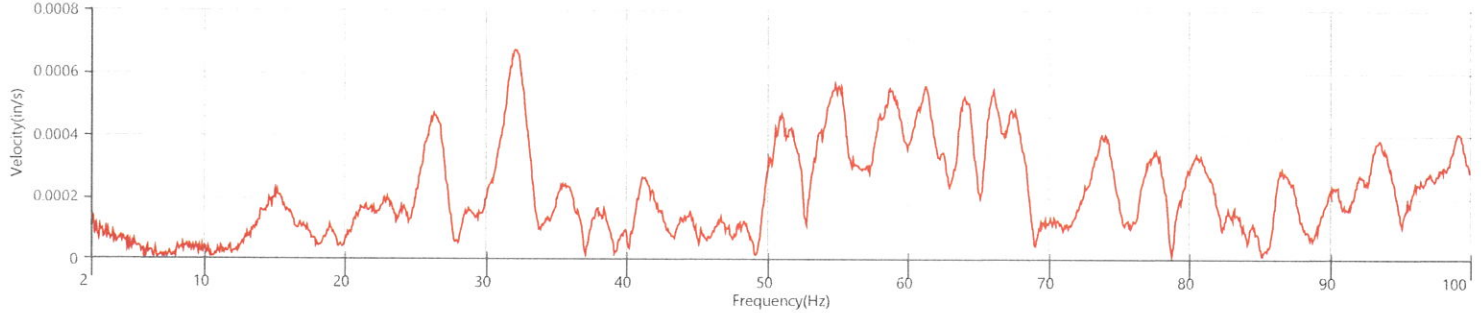
UM8232
 Micromate ISEE 10.90
 3.8 volts
 February 18, 2021 by InstanTel
 UM8232_20211006101854.IDFW
 Disabled

Notes

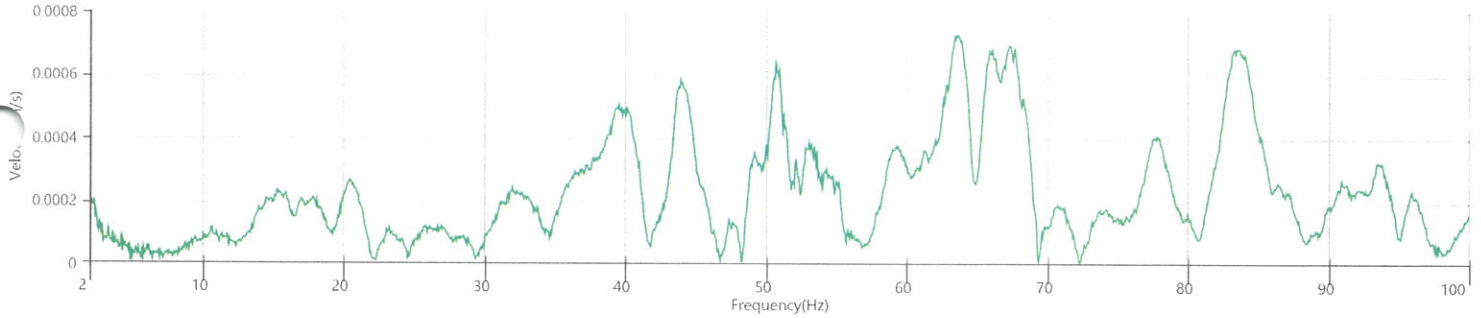
Location Station 5
 Client Spicewood Crushed Stone
 Company Hwy 71 Quarry
 General Notes IGS, Inc.

Extended Note N30.49911 W98.21538
 Post Event Notes No text to be displayed.

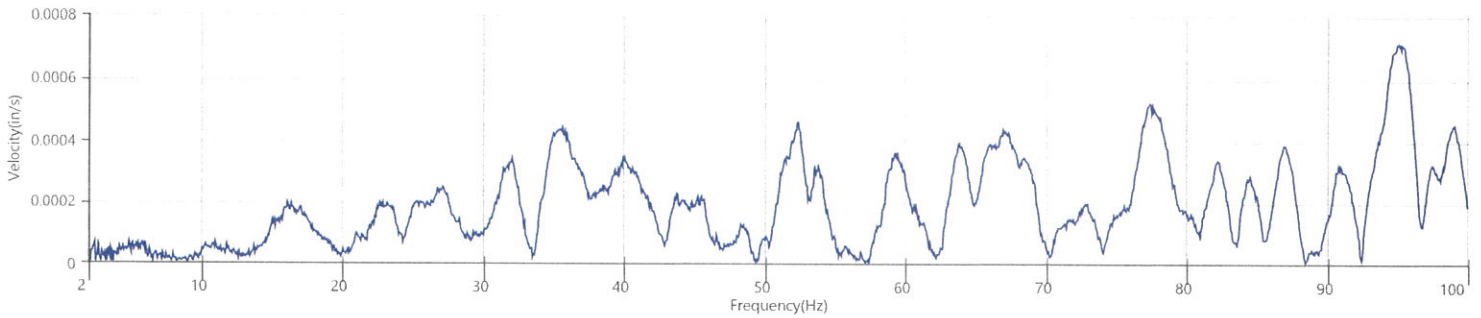
Tran - Dominant Frequency 32.1 Hz, Amplitude 0.0007 in/s (Peak Particle Velocity: 0.0639 in/s)



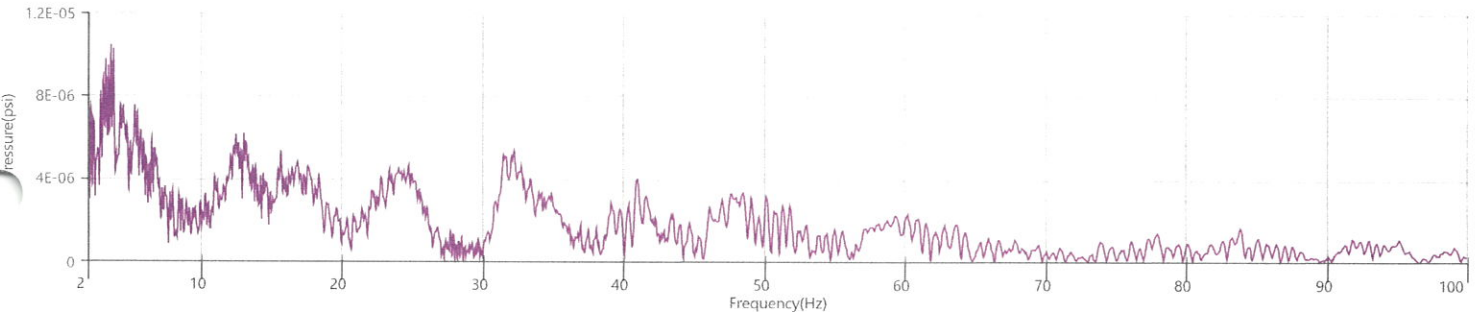
Vert - Dominant Frequency 63.7 Hz, Amplitude 0.0007 in/s (Peak Particle Velocity: 0.0704 in/s)



Long - Dominant Frequency 95.1 Hz, Amplitude 0.0007 in/s (Peak Particle Velocity: 0.0841 in/s)



Mic - Dominant Frequency 3.6 Hz, Amplitude 0.00001 psi (Peak Sound Pressure Level: 0.000891 psi)



Waveform Trigger Source
 Trigger Level(s)
 Pre-Trigger/Record Time
 Sample Rate
 Output File Name
 Operator

Vert at October 6, 2021 10:18:54
 Geo 0.0200 in/s, Mic 0.01029 psi
 0.50 sec/8.0 sec (Fixed)
 4096 sps
 Spicewood Hwy 71 - Station 6.mmb
 Operator

Serial Number
 Model Number
 Battery Level
 Unit Calibration
 Event File Name
 USB Sensor Support

UM7453
 Micromate ISEE 10.90FB
 3.8 volts
 September 16, 2021 by InstanTel
 UM7453_20211006101854.IDFW
 Disabled

Notes

Location Station 6
 Client Spicewood Crushed Stone
 Company Hwy 71 Quarry
 General Notes IGS, Inc.

Extended Note N30.495113 W98.206539

Post Event Notes No text to be displayed.

Geophone

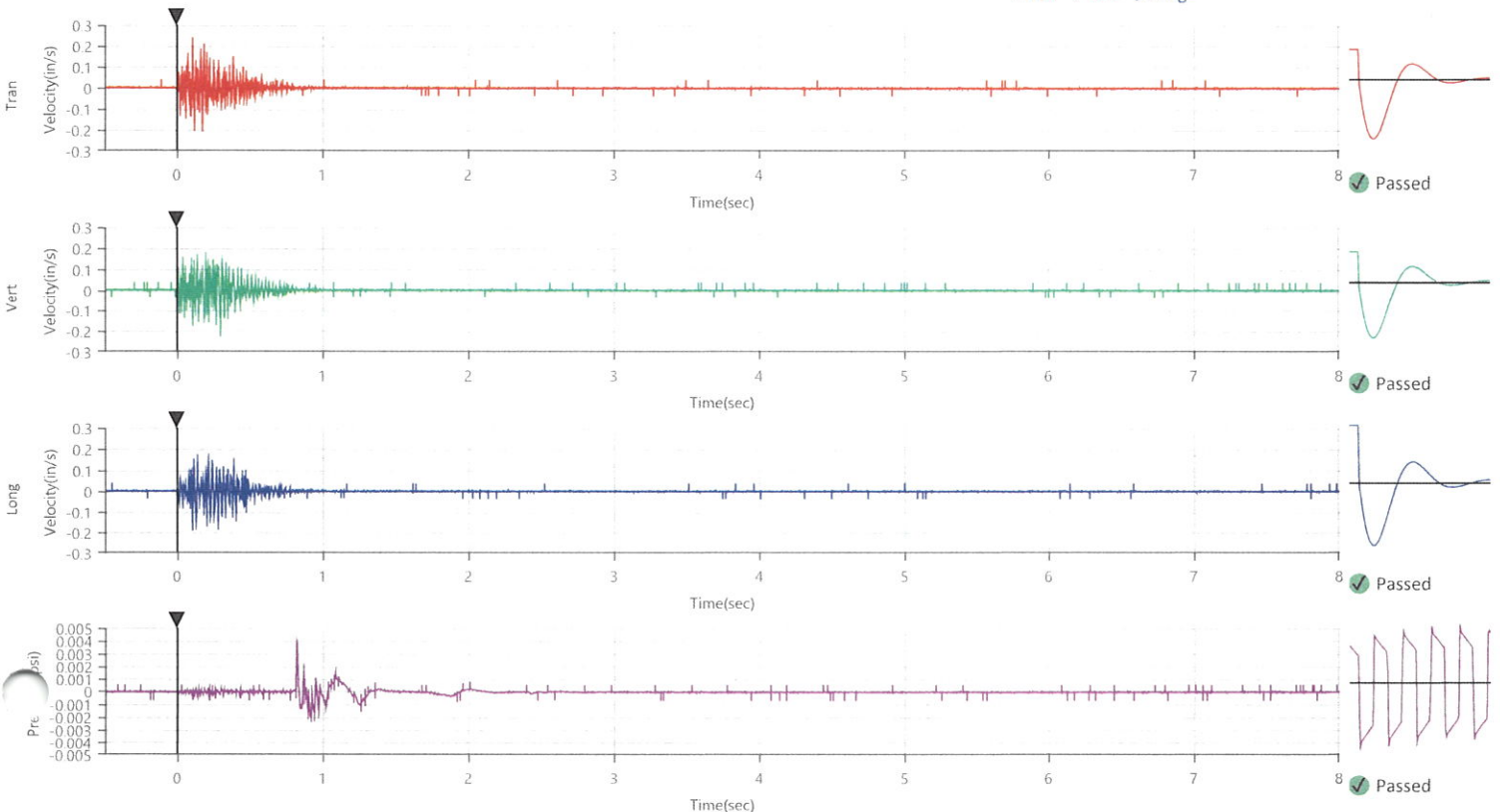
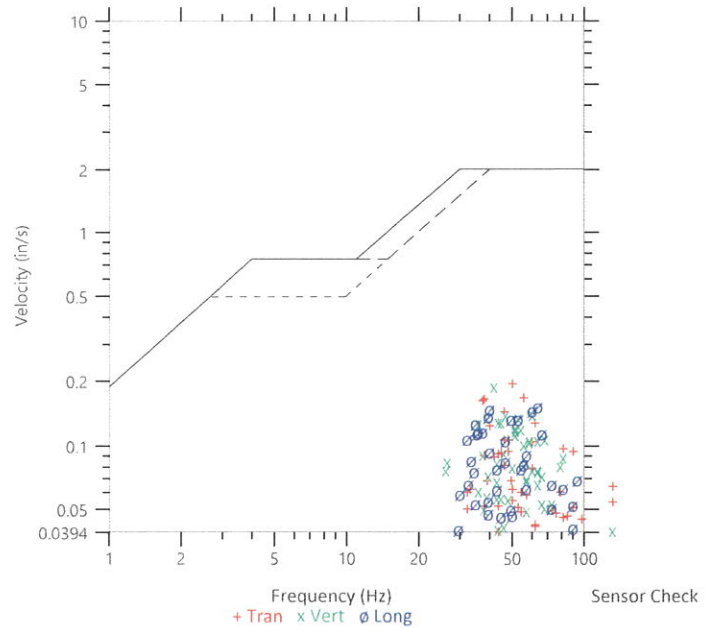
	Tran	Vert	Long
Peak Particle Velocity	0.2011 in/s	0.1927 in/s	0.1545 in/s
Zero Crossing Frequency	50.0 Hz	41.8 Hz	64.0 Hz
Time (Relative to Trigger)	0.106 sec	0.301 sec	0.102 sec
Peak Acceleration	0.207 g	0.145 g	0.184 g
Peak Displacement	0.001 in	0.001 in	0.001 in
Sensor Check	✓ Passed	✓ Passed	✓ Passed
Frequency	7.5 Hz	7.5 Hz	7.5 Hz
Overswing Ratio	3.6	3.6	3.0

Peak Vector Sum 0.2254 in/s at 0.106 sec

ISEE Linear Microphone

Peak Sound Pressure Level 0.003988 psi
 Peak Sound Pressure Level 122.8 dB(L)
 Time (Relative to Trigger) 0.822 sec
 Zero Crossing Frequency 14.9 Hz
 Sensor Check ✓ Passed
 Frequency 19.7 Hz
 Test Amplitude 1412 mv

USBM R18507 And OSMRE
 Velocity versus Frequency (Zero Crossing)



Waveform Trigger Source
 Trigger Level(s)
 Pre-Trigger/Record Time
 Sample Rate
 Output File Name
 Operator

Vert at October 6, 2021 10:18:54
 Geo 0.0200 in/s, Mic 0.01029 psi
 0.50 sec/8.0 sec (Fixed)
 4096 sps
 Spicewood Hwy 71 - Station 6.mmb
 Operator

Serial Number
 Model Number
 Battery Level
 Unit Calibration
 Event File Name
 USB Sensor Support

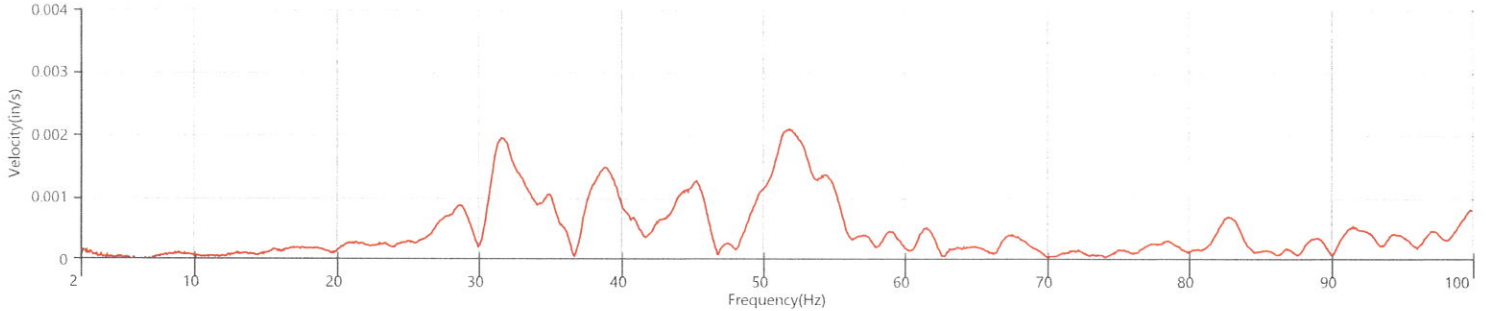
UM7453
 Micromate ISEE 10.90FB
 3.8 volts
 September 16, 2021 by InstanTEL
 UM7453_20211006101854.IDFW
 Disabled

Notes
 Location
 Client
 Company
 General Notes

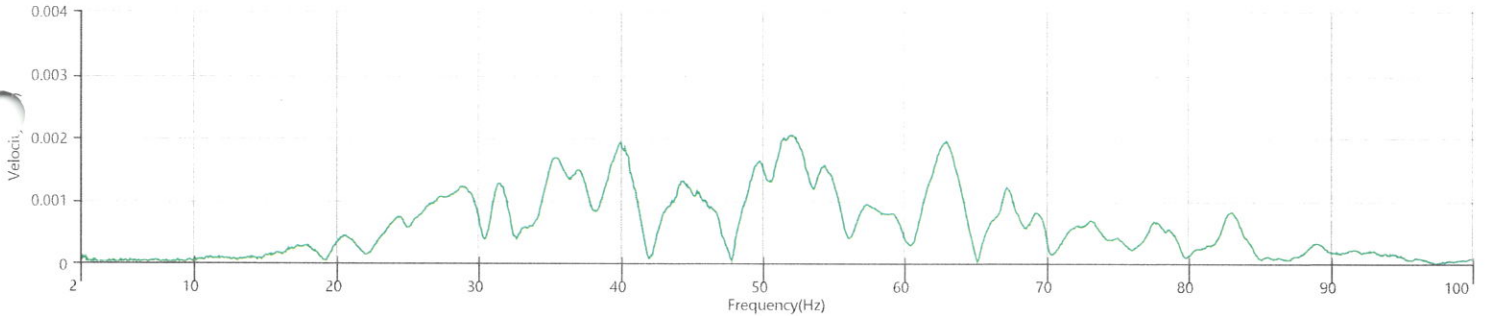
Station 6
 Spicewood Crushed Stone
 Hwy 71 Quarry
 IGS, Inc.

Extended Note N30.495113 W98.206539
 Post Event Notes No text to be displayed.

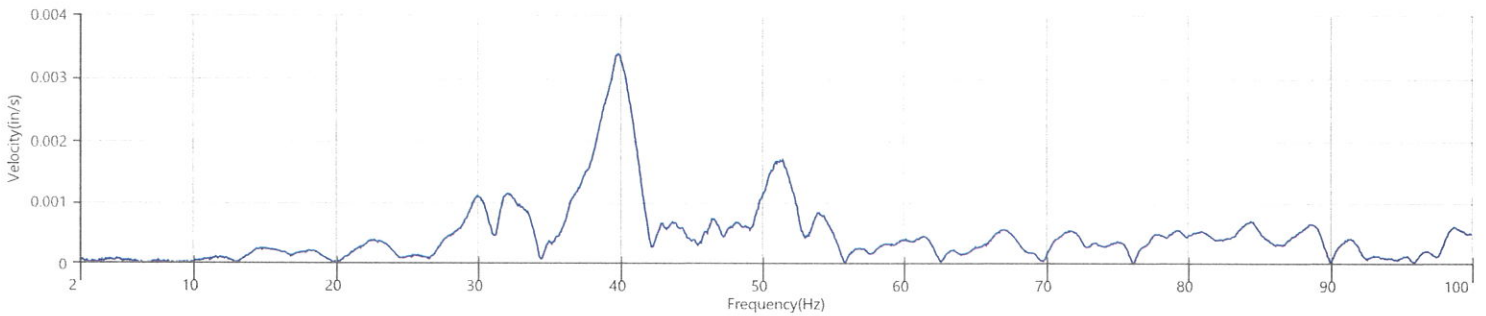
Tran - Dominant Frequency 51.8 Hz, Amplitude 0.0021 in/s (Peak Particle Velocity: 0.2011 in/s)



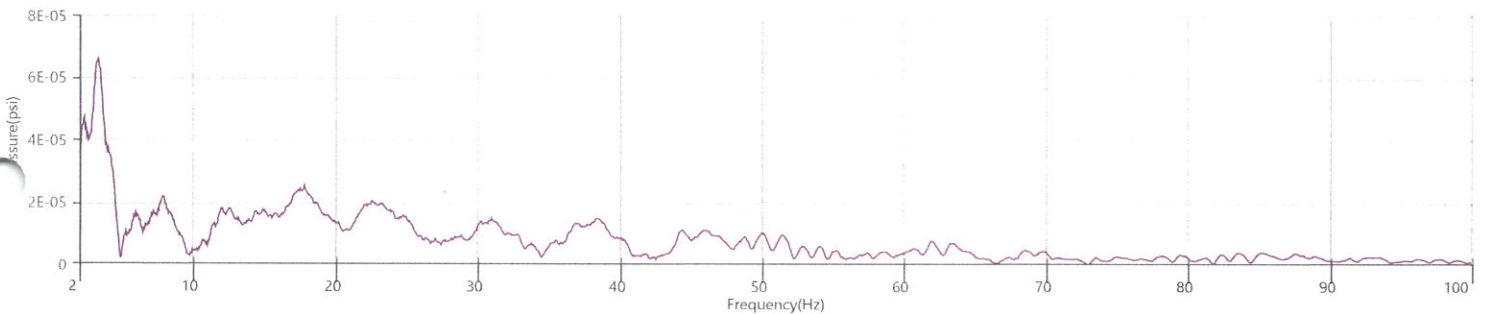
Vert - Dominant Frequency 52.0 Hz, Amplitude 0.0020 in/s (Peak Particle Velocity: 0.1927 in/s)



Long - Dominant Frequency 39.9 Hz, Amplitude 0.0034 in/s (Peak Particle Velocity: 0.1545 in/s)



Mic - Dominant Frequency 3.3 Hz, Amplitude 0.00007 psi (Peak Sound Pressure Level: 0.003988 psi)



Start October 5, 2021 09:04:15
Finish October 5, 2021 23:26:05
Number of Intervals/Interval 861.84/60 sec
Sample Rate 4096 sps
Setup File Name Spicewood Hwy 71 - Noise 1.mmb
Operator Operator

Serial Number
Model Number
Battery Level
Unit Calibration
Event File Name
USB Sensor Support

UM13416
 Micromate ISEE 10.90FB
 3.8 volts
 August 24, 2021 by Instantel
 UM13416_20211005090415.IDFH
 Disabled

Notes
Location Noise 1
Client Spicewood Crushed Stone
Company Hwy 71 Quarry
General Notes IGS, Inc.

Extended Note N30.49572 W98.21577
Post Event Notes No text to be displayed.

Sound Level Microphone
LMax 109.7 dB(A)
Date Oct 5, 2021
Time 09:06:15
Sound(dB(A))
Sensor Check Passed
Test Amplitude 918 mv

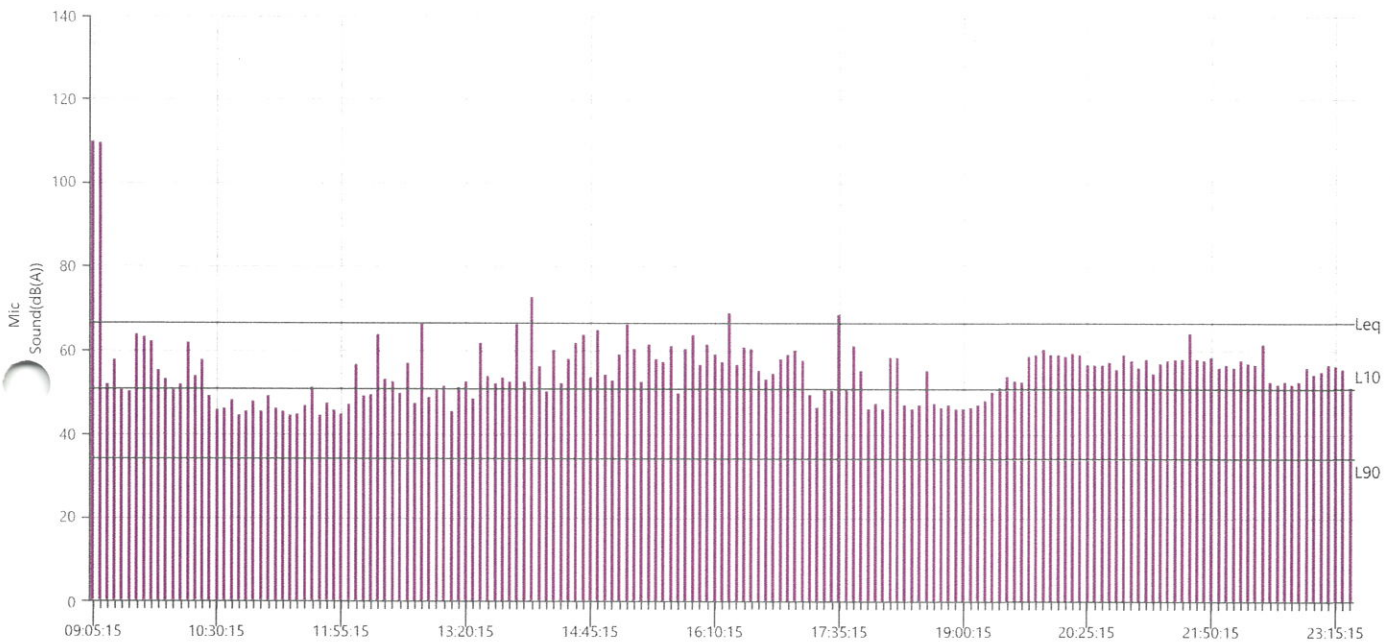
A-Weight Slow
 109.7 dB(A)
 Oct 5, 2021
 09:06:15

LMin	L10	L90	Leq
<30	51	34	66.4

Sensor Check



Passed



Start October 5, 2021 20:44:15
Finish October 5, 2021 23:25:58
Number of Intervals/Interval 161.72/60 sec
Sample Rate 4096 sps
Setup File Name Spicewood Hwy 71 - Noise 2.mmb
Operator Operator

Serial Number UM13415
Model Number Micromate ISEE 10.90FB
Battery Level 3.8 volts
Unit Calibration September 16, 2021 by Instantel
Microphone Calibration UA10098, September 15, 2021 by Instantel
Event File Name UM13415_20211005204415.IDFH
USB Sensor Support Disabled

Notes
Location Noise 2
Client Spicewood Crushed Stone
Company Hwy 71 Quarry
General Notes IGS, Inc.

Extended Note Station 5N30.49911 W98.21538

Post Event Notes No text to be displayed.

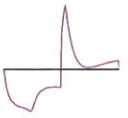
Sound Level Microphone

LMax 53.5 dB(A)
Date Oct 5, 2021
Time 22:30:15
Sound(dB(A))
Sensor Check Passed
Test Amplitude 995 mv

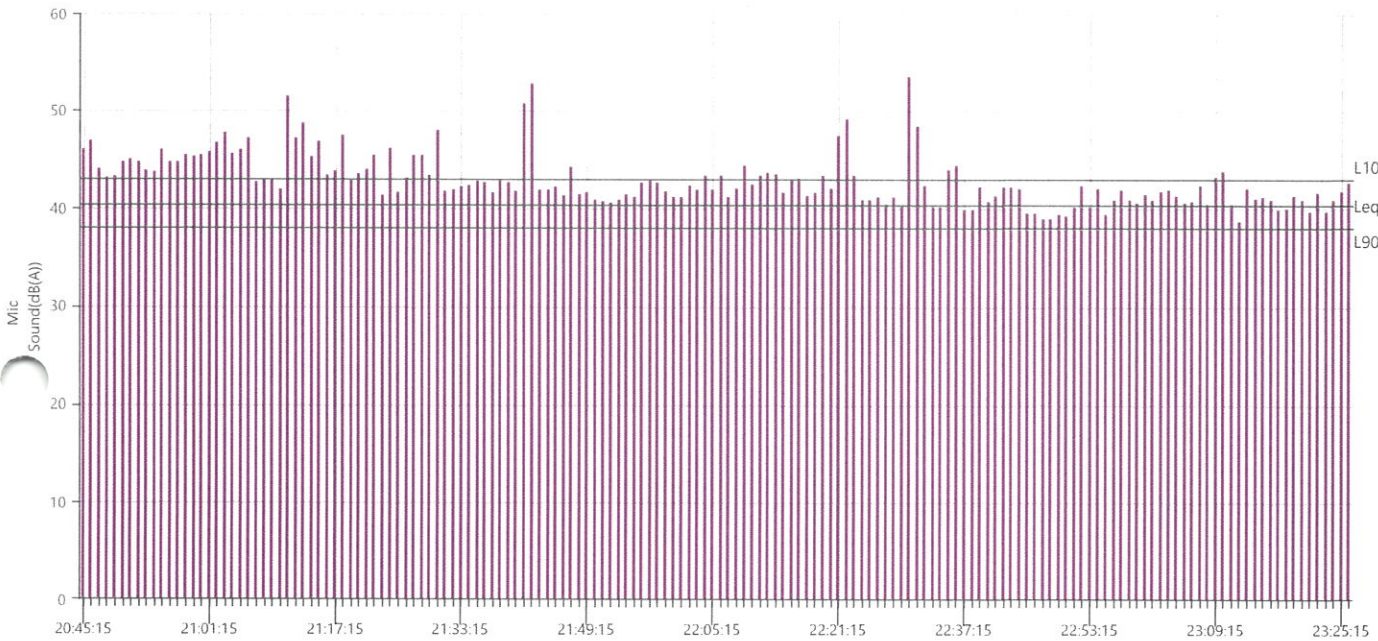
A-Weight Slow

LMin 33.9 **L10** 43 **L90** 38 **Leq** 40.4
 Passed
 995 mv

Sensor Check



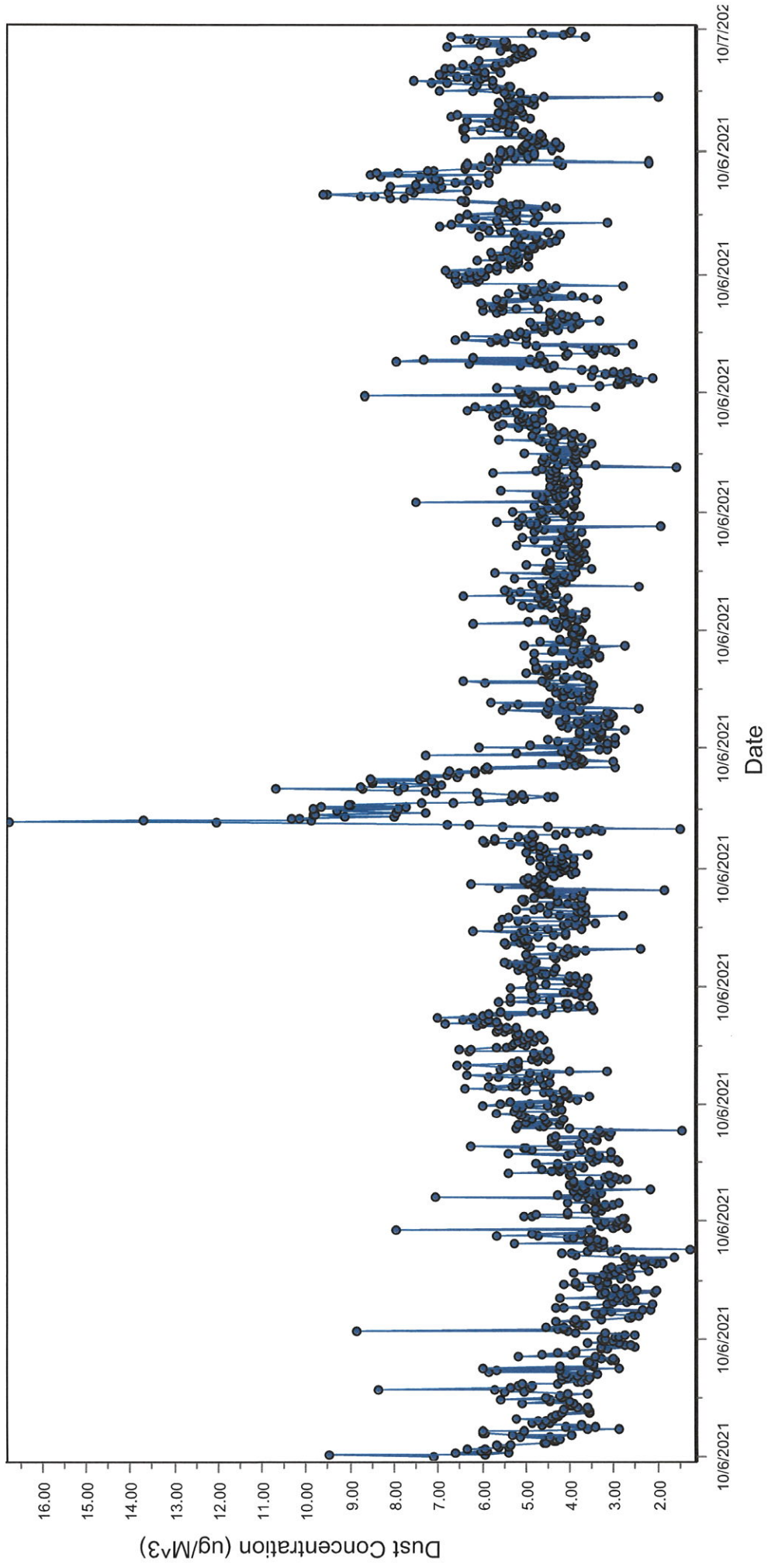
Passed



Spicewood Crushed Stone - Hwy 71 Quarry

North Dust Monitor

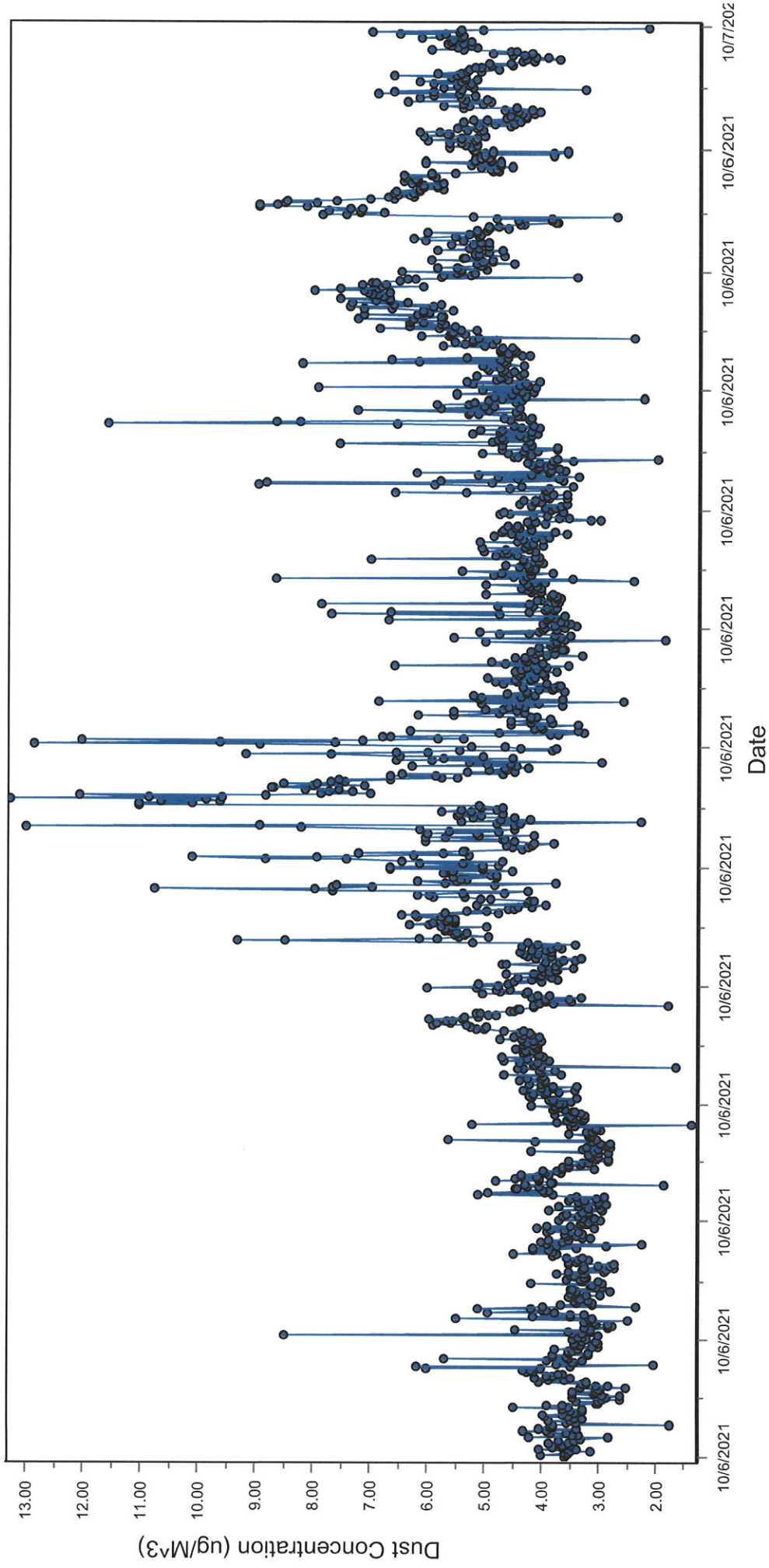
● D100@AvgPartL



Spicewood Crushed Stone - Hwy 71 Quarry

South Dust Monitor

● D100@AvgPartL



Cathy Sereno

From: Joe Crownover <joe.crownover@igs-inc.com>
Sent: Friday, December 3, 2021 6:42 AM
To: Cathy Sereno
Subject: Oct 6 Data
Attachments: Spicewood - South Monitor 10-06-21.pdf; Spicewood - North Monitor 10-06-21.pdf

Sorry for the late response.

Extremely low readings.

Regards,



Joe Crownover, PG
Vice President & Regional Manager
INTEGRATED GEOTECHNICAL SOLUTIONS, INC

Cell +1-512-517-5179 Office +1-346-246-7026
Address 13003 Lemur Lane, Cypress, TX, 77429
Email joe.crownover@igs-inc.com Website www.igs-inc.com



Cathy Sereno

From: Joe Crownover <joe.crownover@igs-inc.com>
Sent: Sunday, November 28, 2021 8:37 AM
To: Cathy Sereno
Subject: RE: November 10th SCS Blast
Attachments: UM13416_2021110000005.IDFH.pdf; UM8232_2021110100932.IDFW.pdf; UM7153_2021110141428.IDFW.pdf; UM6460_2021110100931.IDFW.pdf; UM8173_2021110100932.IDFW.pdf; UM8826_2021110100932.IDFW.pdf; UM7453_2021110100932.IDFW.pdf; UM13415_2021110100932.IDFW.pdf; UM6460_202111006101854.IDFW.pdf; UM7153_20211006101854.IDFW.pdf; UM7453_20211006101854.IDFW.pdf; UM8173_20211006101854.IDFW.pdf; UM8232_20211006101854.IDFW.pdf; UM8826_20211006101854.IDFW.pdf; UM13415_20211005204415.IDFH.pdf; UM13416_20211005090415.IDFH.pdf

Mayor,

Below is the spreadsheet with readings and distances for the two blasts since our equipment has been installed on property.

Spicewood Crushed Stone - Hwy 71 Quarry

General Event Information			Blast					
Date/Time	Unit	Unit Location	Blast Number	Blast Location	Distance	Scaled Distance	PPV	Geo ZCF
10/06/21 0:00	UM13416	Noise 1	04-21		1998.7 ft	89.46		
10/06/21 0:00	UM13415	Noise 2	04-21		2336.9 ft	104.59		
10/06/21 10:18	UM7153	Station 4	04-21		2265.7 ft	101.4	NT	NT
10/06/21 10:18	UM8173	Station 1	04-21		2001.9 ft	89.6	0.1431 in/s	56.9 Hz
10/06/21 10:18	UM8826	Station 2	04-21		2026.6 ft	90.7	0.0804 in/s	70.6 Hz
10/06/21 10:18	UM6460	Station 3	04-21		2108.9 ft	94.39	0.0801 in/s	50.0 Hz
10/06/21 10:18	UM7153	Station 4	04-21		2265.7 ft	101.4	0.0860 in/s	55.4 Hz
10/06/21 10:18	UM8232	Station 5	04-21		2339.5 ft	104.7	0.0841 in/s	93.1 Hz
10/06/21 10:18	UM7453	Station 6	04-21		914.7 ft	40.94	0.2011 in/s	50.0 Hz



Spicewood Crushed Stone - Hwy 71 Quarry

General Event Information			Blast			Distance	Scaled Distance	PPV	Geo ZCF
Date/Time	Unit	Unit Location	Blast Number	Blast Location	Distance				
11/10/21 0:00	UM13416	Noise 1	05-21	South Face	1998.7 ft	137.55			
11/10/21 0:00	UM8232	Noise 2	05-21	South Face	2335.3 ft	160.73			
11/10/21 10:09	UM7153	Station 4	05-21	South Face	2264.4 ft	155.86	NT	NT	
11/10/21 10:09	UM6460	Station 3	05-21	South Face	2107.9 ft	145.09	0.0813 in/s	66.1 Hz	
11/10/21 10:09	UM8173	Station 1	05-21	South Face	2001.6 ft	137.77	0.1589 in/s	41.0 Hz	
11/10/21 10:09	UM8826	Station 2	05-21	South Face	2026.2 ft	139.45	0.0909 in/s	78.8 Hz	
11/10/21 10:09	UM7453	Station 6	05-21	South Face	915.0 ft	62.97	0.2548 in/s	46.5 Hz	
11/10/21 10:09	UM13415	Station 5	05-21	South Face	2337.9 ft	160.9	0.0664 in/s	81.9 Hz	



Let me know if you need anything else.

Regards,



Joe Crownover, PG
Vice President & Regional Manager
INTEGRATED GEOTECHNICAL SOLUTIONS, INC

Cell +1-512-517-5179 Office +1-346-246-7026
Address 13003 Lemur Lane, Cypress, TX, 77429
Email joe.crownover@igs-inc.com Website www.igs-inc.com



From: Cathy Sereno <mayor@doublehorntx.org>
Sent: Monday, November 22, 2021 10:51 AM
To: Joe Crownover <joe.crownover@igs-inc.com>
Subject: November 10th SCS Blast

Good morning Joe,
Just following up on the blast SCS conducted on November 10th.
Do you have the reports ready for distribution?
Let me know the status at your earliest convenience.
Hope you are doing well and ready to enjoy your Thanksgiving holiday!
Cathy Sereno
Mayor
City of Double Horn