

Date/Time	Unit	Unit Location	Blast		Blast Location	Distance	PPV	Geo ZCF	Sound Level Microphone		
			Blast Number	Unit Location					Peak	Time of Peak	Leq
01/05/22 0:00	UM13416	Noise 1	01-22	South Face	1997.4 ft	-	-	106.8 dB(A)	14:52:05	54.2 dB	
01/05/22 0:00	UM8232	Noise 2	01-22	South Face	2334.3 ft	-	-	63.7 dB(A)	6:22:05	39.4 dB	
01/05/22 11:05	UM8173	Station 1	01-22	South Face	2000.3 ft	0.1595 in/s	52.5 Hz	103.4 dB(L)			
01/05/22 11:05	UM8826	Station 2	01-22	South Face	2024.9 ft	0.1061 in/s	68.3 Hz	107.7 dB(L)			
01/05/22 11:05	UM6460	Station 3	01-22	South Face	2106.9 ft	0.0946 in/s	64.0 Hz	109.9 dB(L)			
01/05/22 11:05	UM7153	Station 4	01-22	South Face	2263.4 ft	No Trigger	-	No Trigger			
01/05/22 11:05	UM13415	Station 5	01-22	South Face	2336.6 ft	0.0683 in/s	78.8 Hz	102.5 dB(L)			
01/05/22 11:05	UM7453	Station 6	01-22	South Face	916.3 ft	0.3001 in/s	52.5 Hz	117.8 dB(L)			

Start January 5, 2022 00:00:05
Finish January 5, 2022 22:23:39
Number of Intervals/Interval 1343.57/60 sec
Sample Rate 4096 sps
Setup File Name Spicewood Hwy 71 - Noise 1.mmb
Operator Operator

Serial Number
Model Number
Battery Level
Unit Calibration
Event File Name
USB Sensor Support

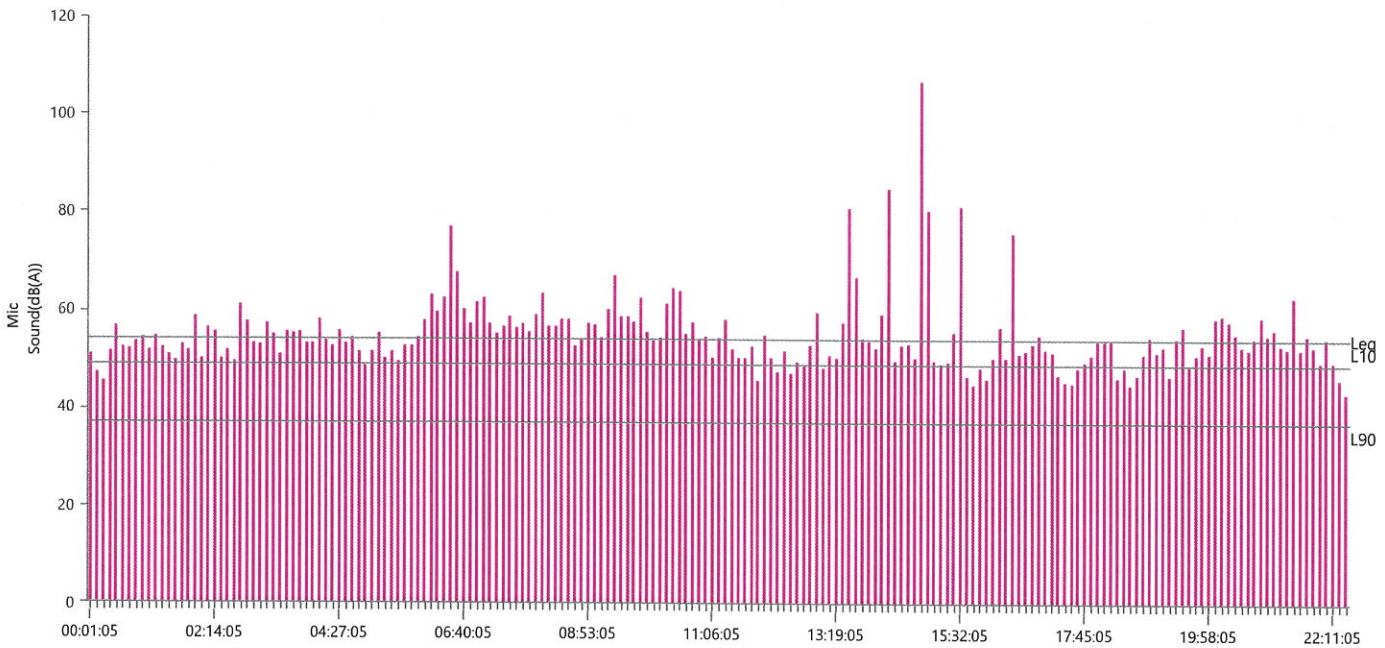
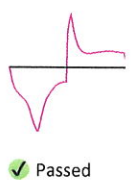
UM13416
 Micromate ISEE 10.90FB
 3.8 volts
 August 24, 2021 by InstanTel
 UM13416_20220105000005.IDFH
 Disabled

Notes
Location Noise 1
Client Spicewood Crushed Stone
Company Hwy 71 Quarry
General Notes IGS, Inc.

Extended Note N30.49572 W98.21577
Post Event Notes No text to be displayed.

Sound Level Microphone
LMax 106.8 dB(A)
Date Jan 5, 2022
Time 14:52:05
LMin **L10** **L90** **Leq**
 <30 49 37 54.2
 ✓ Passed
 1077 mv

Sensor Check



Start January 5, 2022 00:00:05
Finish January 5, 2022 20:14:34
Number of Intervals/Interval 1214.48/60 sec
Sample Rate 4096 sps
Setup File Name Spicewood Hwy 71 - Noise 2.mmb
Operator Operator

Serial Number
Model Number
Battery Level
Unit Calibration
Microphone Calibration
Event File Name
USB Sensor Support

UM8232
 Micromate ISEE 10.90
 3.8 volts
 February 18, 2021 by InstanTEL
 UA10098, September 15, 2021 by InstanTEL
 UM8232_20220105000005.IDFH
 Disabled

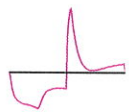
Notes
Location Noise 2
Client Spicewood Crushed Stone
Company Hwy 71 Quarry
General Notes IGS, Inc.

Extended Note Station 5N30.49911 W98.21538
Post Event Notes No text to be displayed.

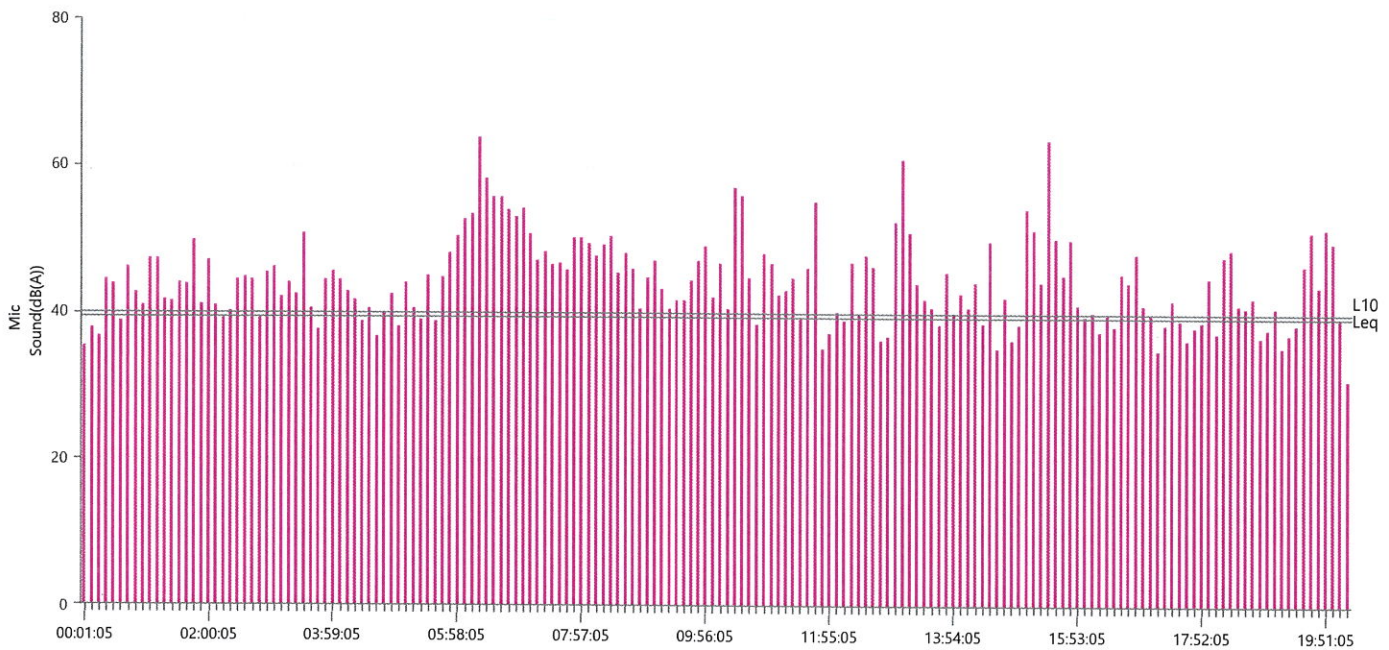
Sound Level Microphone
LMax 63.7 dB(A)
Date Jan 5, 2022
Time 06:22:05
Sound(dB(A))
Sensor Check ✔ Passed
Test Amplitude 1018 mv

A-Weight Slow	LMin	L10	L90	Leq
	<30	40	<30	39.4

Sensor Check



✔ Passed



Waveform Trigger Source
Trigger Level(s)
Pre-Trigger/Record Time
Sample Rate
Setup File Name
Operator

Long at January 5, 2022 11:05:56
 Geo 0.0200 in/s, Mic 0.01029 psi
 0.50 sec/8.0 sec (Fixed)
 4096 sps
 Spicewood Hwy 71 - Station 1.mmb
 Operator

Serial Number
Model Number
Battery Level
Unit Calibration
Event File Name
USB Sensor Support

UM8173
 Micromate ISEE 10.90FB
 3.8 volts
 September 2, 2021 by InstanTEL
 UM8173_20220105110556.IDFW
 Disabled

Notes

Location Station 1
 Client Spicewood Crushed Stone
 Company Hwy 71 Quarry
 General Notes IGS, Inc.

Extended Note N30.49572 W98.21577

Post Event Notes No text to be displayed.

Geophone

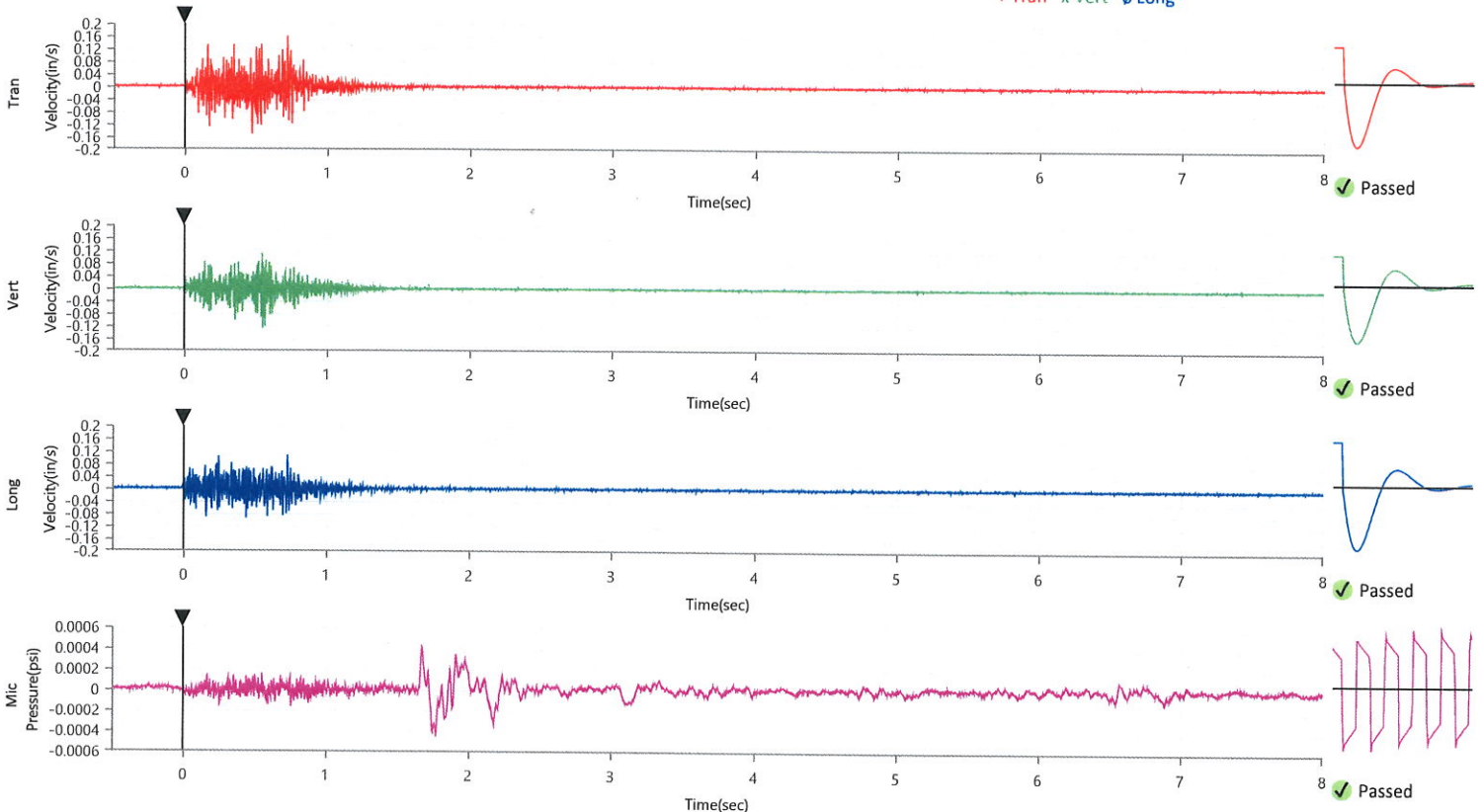
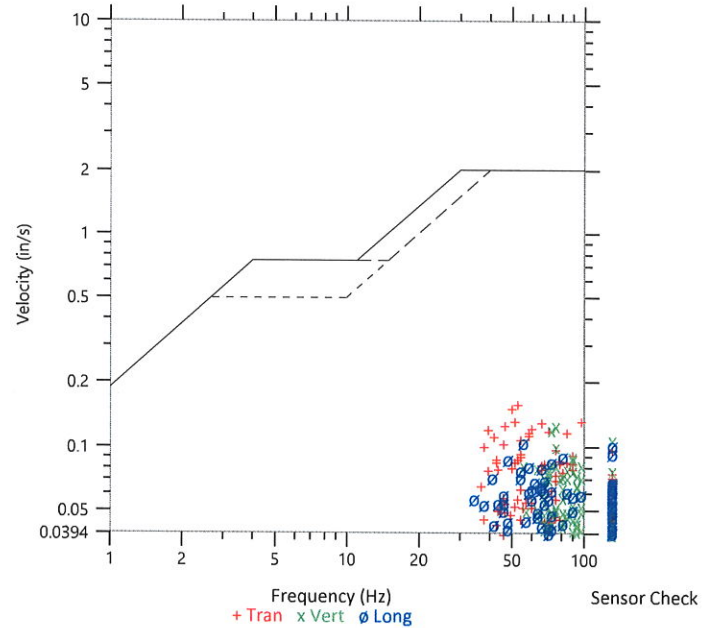
	Tran	Vert	Long
Peak Particle Velocity	0.1595 in/s	0.1282 in/s	0.1061 in/s
Zero Crossing Frequency	52.5 Hz	75.9 Hz	53.9 Hz
Time (Relative to Trigger)	0.718 sec	0.550 sec	0.727 sec
Peak Acceleration	0.240 g	0.197 g	0.250 g
Peak Displacement	0.000 in	0.000 in	0.000 in
Sensor Check	✓ Passed	✓ Passed	✓ Passed
Frequency	7.5 Hz	7.5 Hz	7.1 Hz
Overswing Ratio	4.1	3.4	3.7

Peak Vector Sum 0.1708 in/s at 0.718 sec

ISEE Linear Microphone

Peak Sound Pressure Level 0.000430 psi
 Peak Sound Pressure Level 103.4 dB(L)
 Time (Relative to Trigger) 1.771 sec
 Zero Crossing Frequency 5.9 Hz
 Sensor Check ✓ Passed
 Frequency 19.7 Hz
 Test Amplitude 1599 mv

USBM R18507 And OSMRE
 Velocity versus Frequency (Zero Crossing)



Waveform Trigger Source
Trigger Level(s)
Pre-Trigger/Record Time
Sample Rate
Setup File Name
Operator

Tran at January 5, 2022 11:05:58
 Geo 0.0200 in/s, Mic 0.01029 psi
 0.50 sec/8.0 sec (Fixed)
 4096 sps
 Spicewood Hwy 71 - Station 2.mmb
 Operator

Serial Number
Model Number
Battery Level
Unit Calibration
Event File Name
USB Sensor Support

UM8826
 Micromate ISEE 10.90
 3.8 volts
 February 11, 2021 by Instantel
 UM8826_20220105110558.IDFW
 Disabled

Notes

Location Station 2
 Client Spicewood Crushed Stone
 Company Hwy 71
 General Notes IGS, Inc

Extended Note N30.49650 W21572

Post Event Notes No text to be displayed.

Geophone

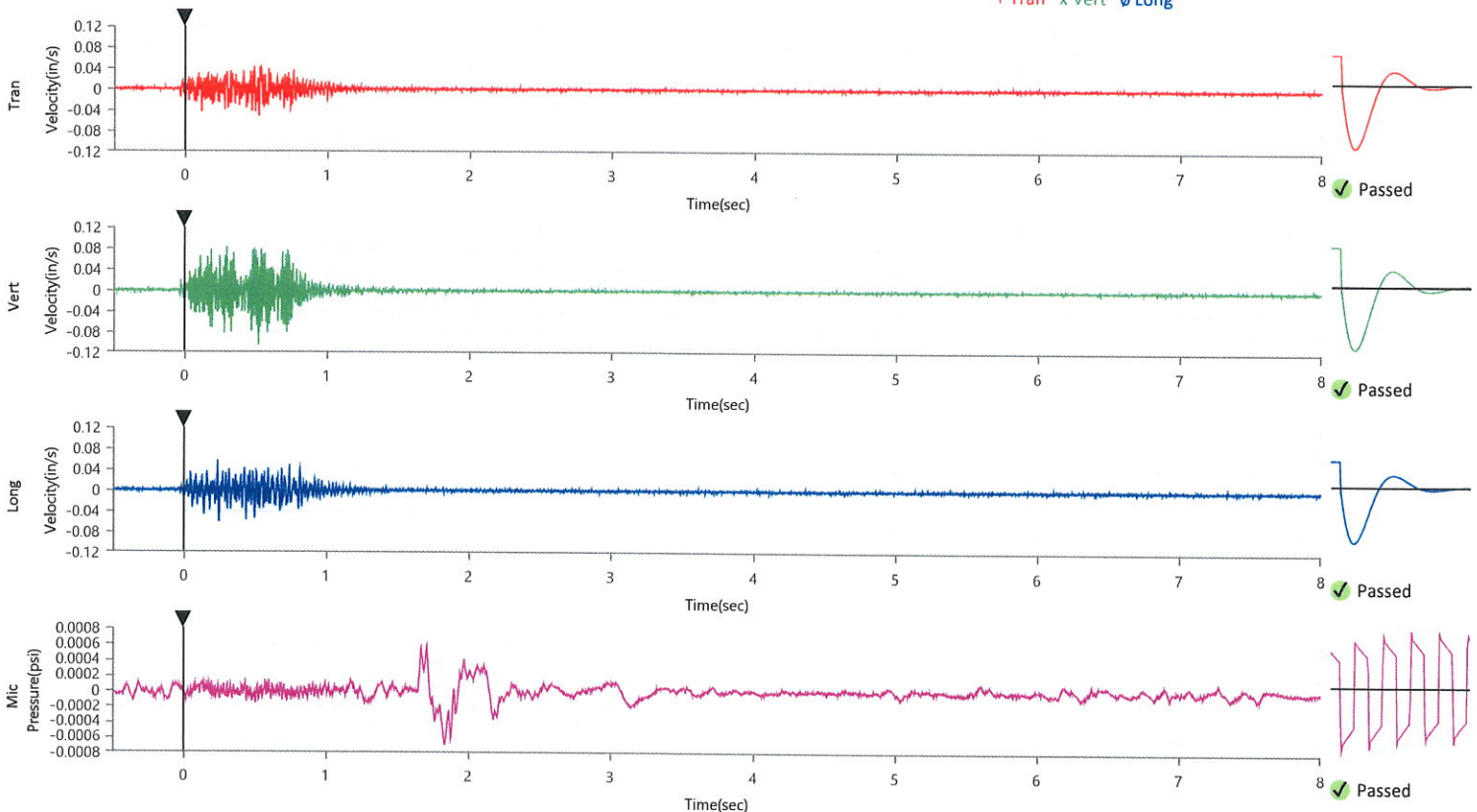
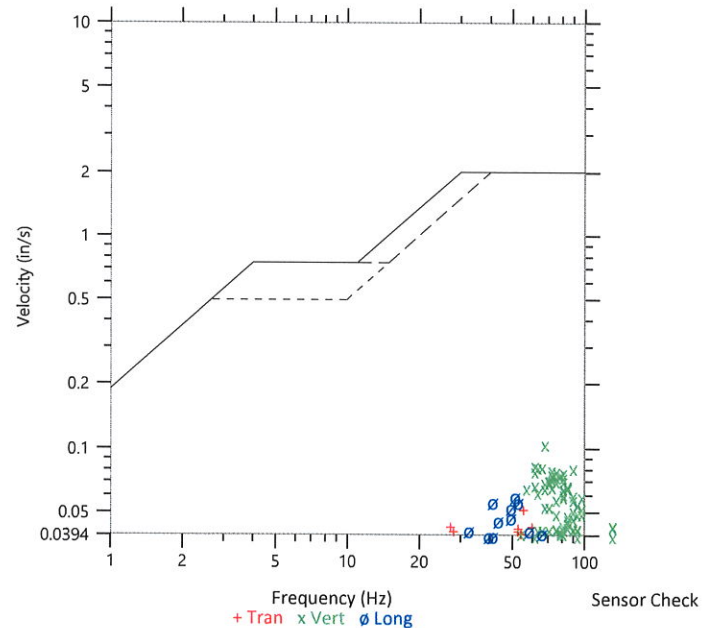
	Tran	Vert	Long
Peak Particle Velocity	0.0524 in/s	0.1061 in/s	0.0605 in/s
Zero Crossing Frequency	55.4 Hz	68.3 Hz	51.2 Hz
Time (Relative to Trigger)	0.519 sec	0.520 sec	0.244 sec
Peak Acceleration	0.066 g	0.122 g	0.063 g
Peak Displacement	0.000 in	0.000 in	0.000 in
Sensor Check	✓ Passed	✓ Passed	✓ Passed
Frequency	7.3 Hz	7.5 Hz	7.3 Hz
Overswing Ratio	4.6	3.8	4.7

Peak Vector Sum 0.1200 in/s at 0.520 sec

ISEE Linear Microphone

Peak Sound Pressure Level 0.000707 psi
 Peak Sound Pressure Level 107.7 dB(L)
 Time (Relative to Trigger) 1.834 sec
 Zero Crossing Frequency 3.0 Hz
 Sensor Check ✓ Passed
 Frequency 19.7 Hz
 Test Amplitude 1556 mv

USBM R18507 And OSMRE
 Velocity versus Frequency (Zero Crossing)



Waveform Trigger Source
 Trigger Level(s)
 Pre-Trigger/Record Time
 Sample Rate
 Setup File Name
 Operator

Tran at January 5, 2022 11:05:58
 Geo 0.0200 in/s, Mic 0.01029 psi
 0.50 sec/8.0 sec (Fixed)
 4096 sps
 Spicewood Hwy 71 - Station 3.mmb
 Operator

Serial Number
 Model Number
 Battery Level
 Unit Calibration
 Event File Name
 USB Sensor Support

UM6460
 Micromate ISEE 10.90FB
 3.8 volts
 September 9, 2021 by InstanTEL
 UM6460_20220105110558.IDFW
 Disabled

Notes

Location Station 3
 Client Spicewood Crushed Stone
 Company Hwy 71 Quarry
 General Notes IGS, Inc.

Extended Note N30.49742 W98.21566

Post Event Notes No text to be displayed.

Geophone

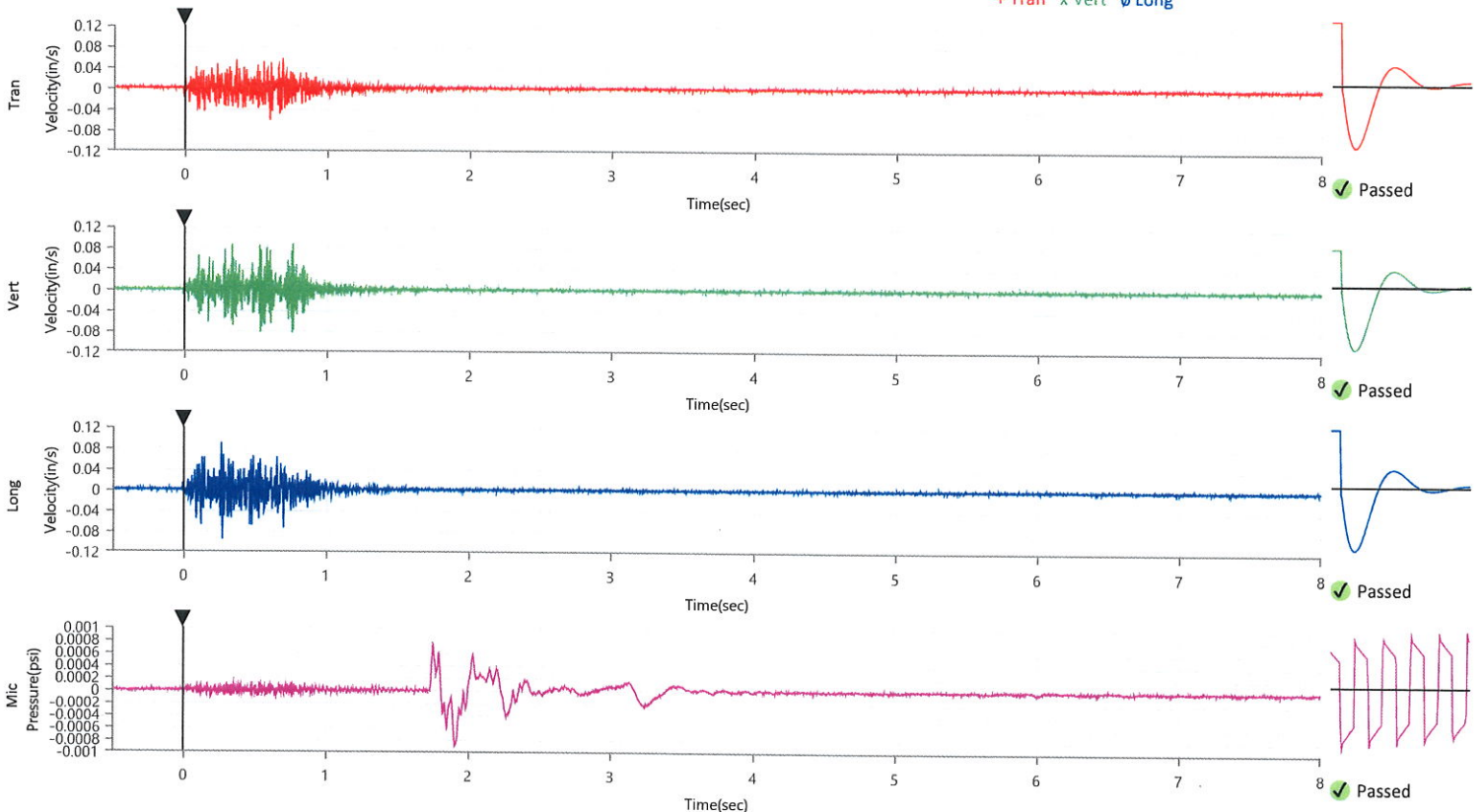
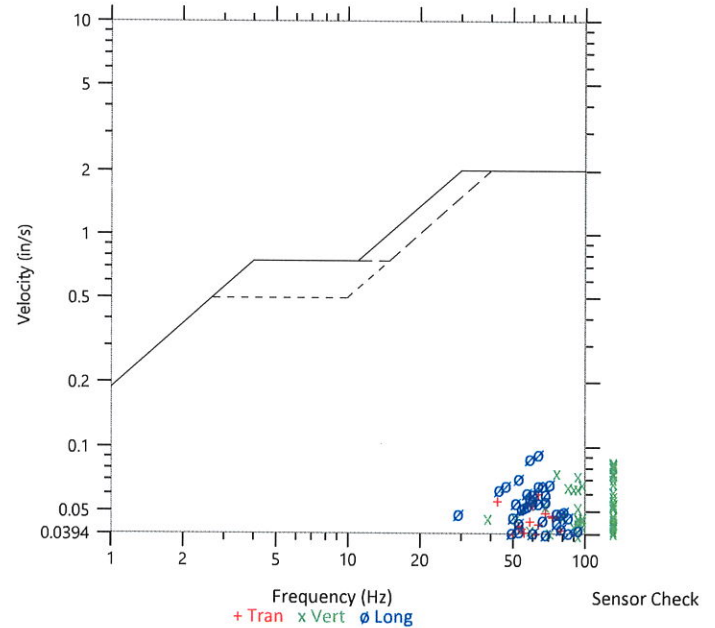
	Tran	Vert	Long
Peak Particle Velocity	0.0614 in/s	0.0872 in/s	0.0946 in/s
Zero Crossing Frequency	64.0 Hz	>100 Hz	64.0 Hz
Time (Relative to Trigger)	0.598 sec	0.760 sec	0.270 sec
Peak Acceleration	0.102 g	0.155 g	0.122 g
Peak Displacement	0.000 in	0.000 in	0.000 in
Sensor Check	✓ Passed	✓ Passed	✓ Passed
Frequency	7.5 Hz	7.3 Hz	7.5 Hz
Overswing Ratio	3.2	3.8	3.5

Peak Vector Sum 0.1008 in/s at 0.335 sec

ISEE Linear Microphone

Peak Sound Pressure Level 0.000905 psi
 Peak Sound Pressure Level 109.9 dB(L)
 Time (Relative to Trigger) 1.904 sec
 Zero Crossing Frequency 2.7 Hz
 Sensor Check ✓ Passed
 Frequency 20.5 Hz
 Test Amplitude 1406 mv

USBM R18507 And OSMRE
 Velocity versus Frequency (Zero Crossing)



Waveform Trigger Source
Trigger Level(s)
Pre-Trigger/Record Time
Sample Rate
Setup File Name
Operator

Long at January 5, 2022 11:05:59
 Geo 0.0200 in/s, Mic 0.01029 psi
 0.50 sec/8.0 sec (Fixed)
 4096 sps
 Spicewood Hwy 71 - Station 5.mmb
 Operator

Serial Number
Model Number
Battery Level
Unit Calibration
Event File Name
USB Sensor Support

UM13415
 Micromate ISEE 10.90FB
 3.8 volts
 September 16, 2021 by InstanTEL
 UM13415_20220105110559.IDFW
 Disabled

Notes

Location Station 5
 Client Spicewood Crushed Stone
 Company Hwy 71 Quarry
 General Notes IGS, Inc.

Extended Note N30.49911 W98.21538

Post Event Notes No text to be displayed.

Geophone

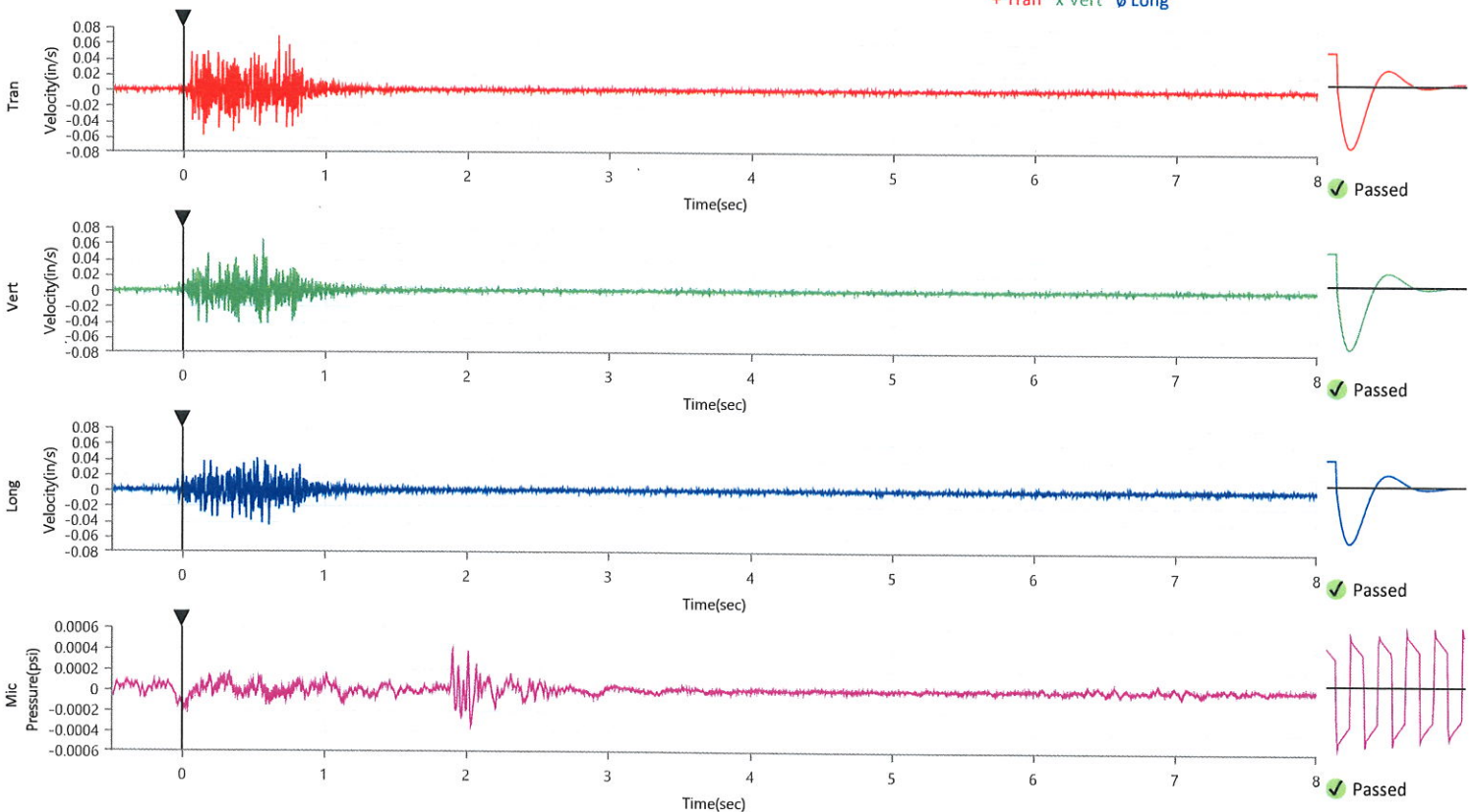
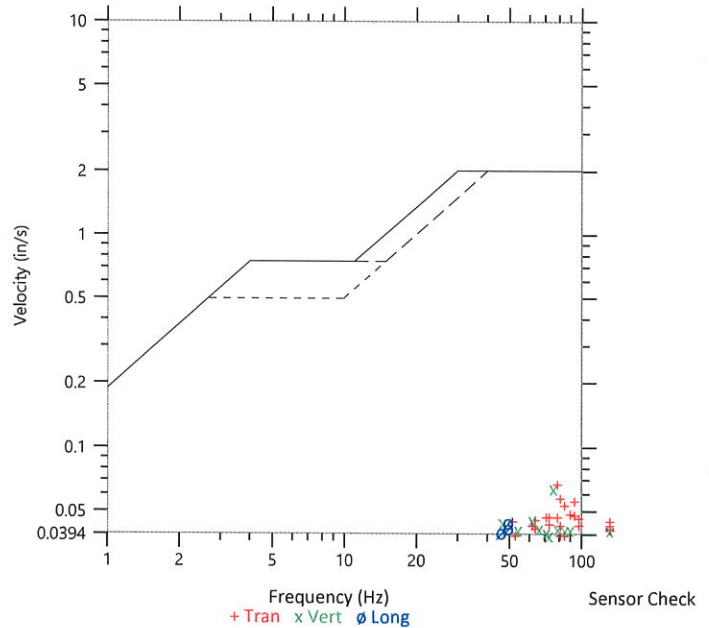
	Tran	Vert	Long
Peak Particle Velocity	0.0683 in/s	0.0652 in/s	0.0450 in/s
Zero Crossing Frequency	78.8 Hz	75.9 Hz	48.8 Hz
Time (Relative to Trigger)	0.672 sec	0.564 sec	0.611 sec
Peak Acceleration	0.099 g	0.079 g	0.066 g
Peak Displacement	0.000 in	0.000 in	0.000 in
Sensor Check	✓ Passed	✓ Passed	✓ Passed
Frequency	7.5 Hz	7.5 Hz	7.3 Hz
Overswing Ratio	4.1	4.6	4.9

Peak Vector Sum 0.0690 in/s at 0.672 sec

ISEE Linear Microphone

Peak Sound Pressure Level 0.000385 psi
 Peak Sound Pressure Level 102.5 dB(L)
 Time (Relative to Trigger) 1.903 sec
 Zero Crossing Frequency 18.1 Hz
 Sensor Check ✓ Passed
 Frequency 20.5 Hz
 Test Amplitude 1588 mv

USBM R18507 And OSMRE
 Velocity versus Frequency (Zero Crossing)



Waveform Trigger Source
Trigger Level(s)
Pre-Trigger/Record Time
Sample Rate
Setup File Name
Operator

Tran at January 5, 2022 11:05:58
 Geo 0.0200 in/s, Mic 0.01029 psi
 0.50 sec/8.0 sec (Fixed)
 4096 sps
 Spicewood Hwy 71 - Station 6.mmb
 Operator

Serial Number
Model Number
Battery Level
Unit Calibration
Event File Name
USB Sensor Support

UM7453
 Micromate ISEE 10.90FB
 3.8 volts
 September 16, 2021 by InstanTEL
 UM7453_20220105110558.IDFW
 Disabled

Notes

Location Station 6
 Client Spicewood Crushed Stone
 Company Hwy 71 Quarry
 General Notes IGS, Inc.

Extended Note N30.495113 W98.206539

Post Event Notes No text to be displayed.

Geophone

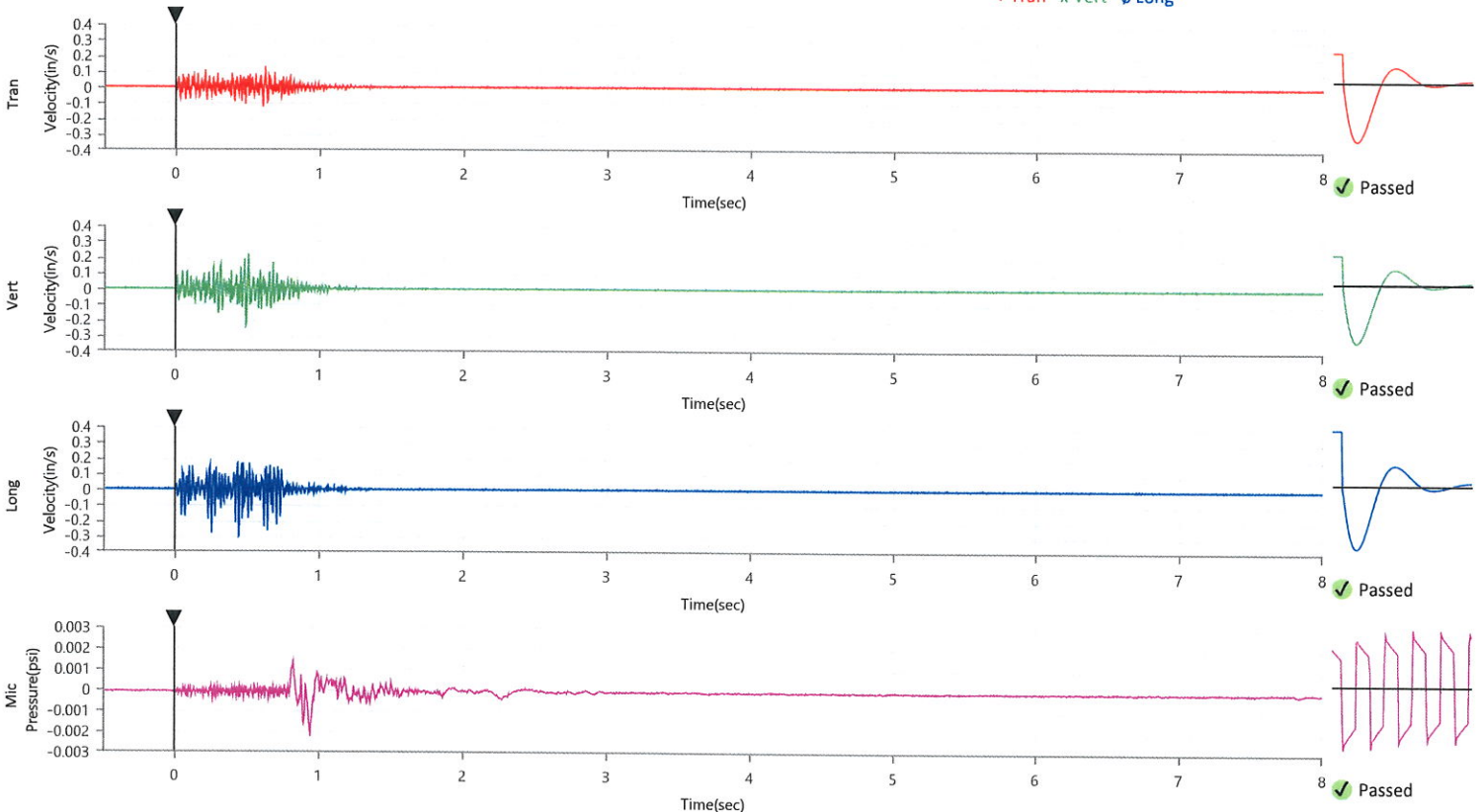
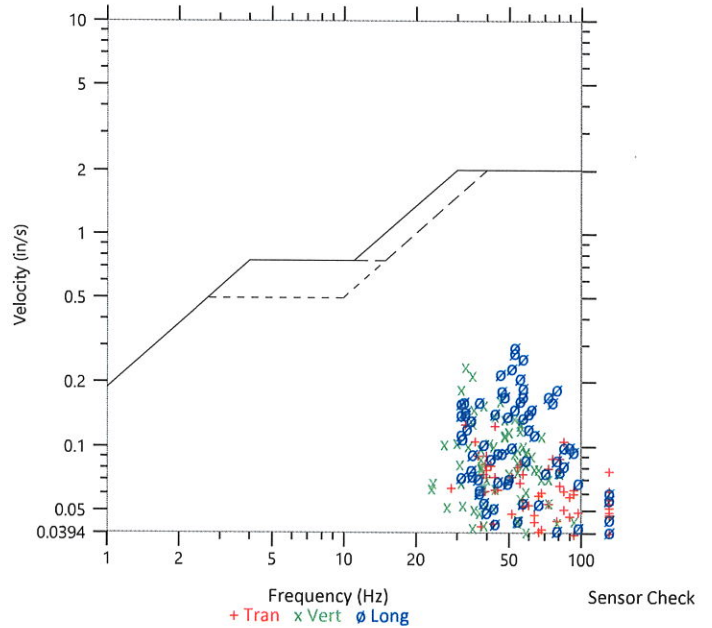
	Tran	Vert	Long
Peak Particle Velocity	0.1297 in/s	0.2402 in/s	0.3001 in/s
Zero Crossing Frequency	32.5 Hz	32.5 Hz	52.5 Hz
Time (Relative to Trigger)	0.621 sec	0.489 sec	0.444 sec
Peak Acceleration	0.165 g	0.207 g	0.270 g
Peak Displacement	0.000 in	0.001 in	0.001 in
Sensor Check	✓ Passed	✓ Passed	✓ Passed
Frequency	7.3 Hz	7.3 Hz	7.5 Hz
Overswing Ratio	3.7	3.7	3.1

Peak Vector Sum 0.3127 in/s at 0.444 sec

ISEE Linear Microphone

Peak Sound Pressure Level 0.002248 psi
 Peak Sound Pressure Level 117.8 dB(L)
 Time (Relative to Trigger) 0.942 sec
 Zero Crossing Frequency 8.6 Hz
 Sensor Check ✓ Passed
 Frequency 19.7 Hz
 Test Amplitude 1591 mv

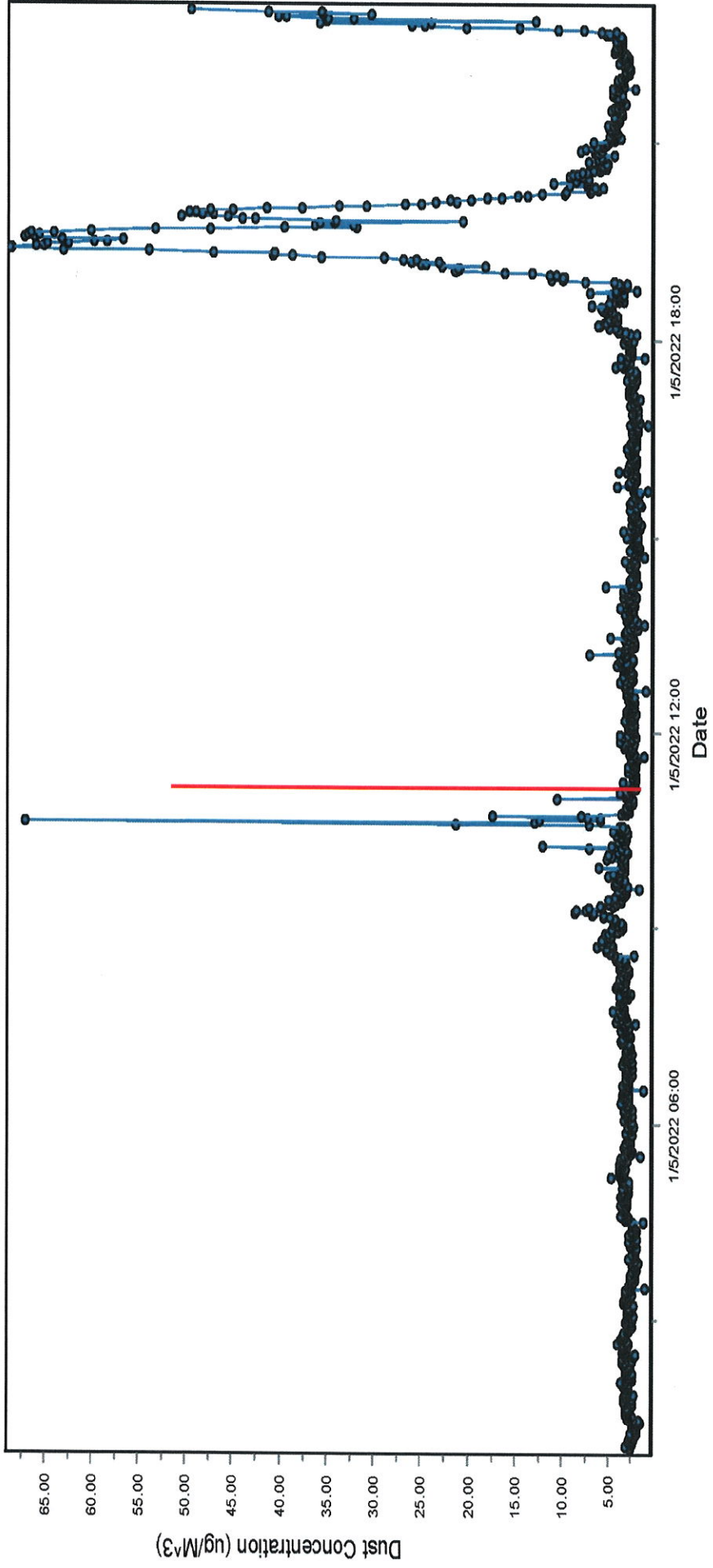
USBM R18507 And OSMRE
 Velocity versus Frequency (Zero Crossing)



Spicewood Crushed Stone - Hwy 71 Quarry

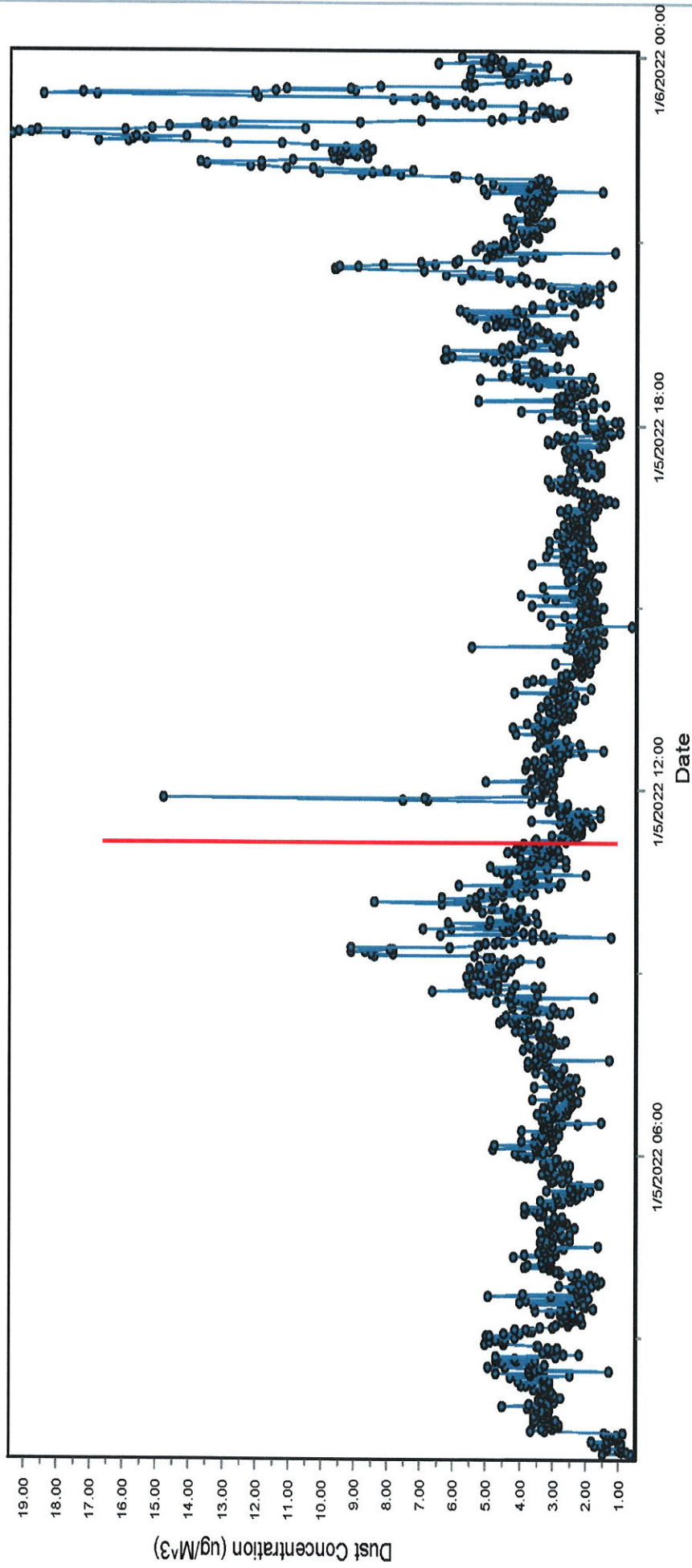
South Dust Monitor

● D100@AvgPartL



Spicewood Crushed Stone - Hwy 71 Quarry
North Dust Monitor

● D100@AvgPartL



Spicewood Hwy 71 - Station 5

Spicewood Hwy 71 North Dust

Spicewood Hwy 71 - Station 4

Spicewood Hwy 71 - Station 3

Spicewood Hwy 71 - Station 2

Spicewood Hwy 71 - Station 1

Blast

Spicewood Hwy 71 - Station 6

Spicewood Hwy 71 - South Dust

Spicewood Hwy 71 - Noise 3

Double Horn Boat & RV Storage

Professional Civil Process - Corporate