

Date/Time	Unit	Unit Location	Blast		Blast Location	Distance	PPV	Geo ZCF	Sound Level Microphone		
			Blast Number	Level					PSPL	Peak	Time of Peak
03/03/22 0:00	UM13917	Noise 2	05-22	Level 1	2362.2 ft	-	-	-	60.9 dB(A)	8:46:05	31.0 dB
03/03/22 0:00	UM13416	Noise 3	05-22	Level 1	2015.1 ft	-	-	-	70.6 dB(A)	16:18:05	51.5 dB
03/03/22 11:25	UM8173	Station 1	05-22	Level 1	2016.7 ft	0.1657 in/s	44.5 Hz	106.6 dB(L)	-	-	-
03/03/22 11:25	UM9068	Station 2	05-22	Level 1	2044.6 ft	0.1306 in/s	68.3 Hz	107.3 dB(L)	-	-	-
03/03/22 11:25	UM6460	Station 3	05-22	Level 1	2130.2 ft	0.0869 in/s	70.6 Hz	112.4 dB(L)	-	-	-
03/03/22 11:25	UM7153	Station 4	05-22	Level 1	2289.0 ft	0.0875 in/s	41.0 Hz	108.9 dB(L)	-	-	-
03/03/22 11:25	UM13415	Station 5	05-22	Level 1	2364.8 ft	0.1120 in/s	30.1 Hz	99.2 dB(L)	-	-	-
03/03/22 11:25	UM7453	Station 6	05-22	Level 1	900.9 ft	0.1431 in/s	43.6 Hz	118.9 dB(L)	-	-	-

Spicewood Hwy 71 - Station 5

Spicewood Hwy 71 - Station 4

Spicewood Hwy 71 - Station 3

Spicewood Hwy 71 - Station 2

Spicewood Hwy 71 - Station 1

05-22

Spicewood Hwy 71 - Station 6

Spicewood Hwy 71 - South Dust

Spicewood Hwy 71 - Noise 3



Start March 3, 2022 00:00:05
Finish March 3, 2022 22:55:49
Number of Intervals/Interval 1375.72/60 sec
Sample Rate 4096 sps
Setup File Name Spicewood Hwy 71 - Noise 2.mmb
Operator Operator

Serial Number UM13917
Model Number Micromate ISEE 10.90FB
Battery Level 3.8 volts
Unit Calibration November 23, 2021 by InstanTel
Microphone Calibration UA10859, September 30, 2021 by InstanTel
Event File Name UM13917_20220303000005.IDFH
USB Sensor Support Disabled

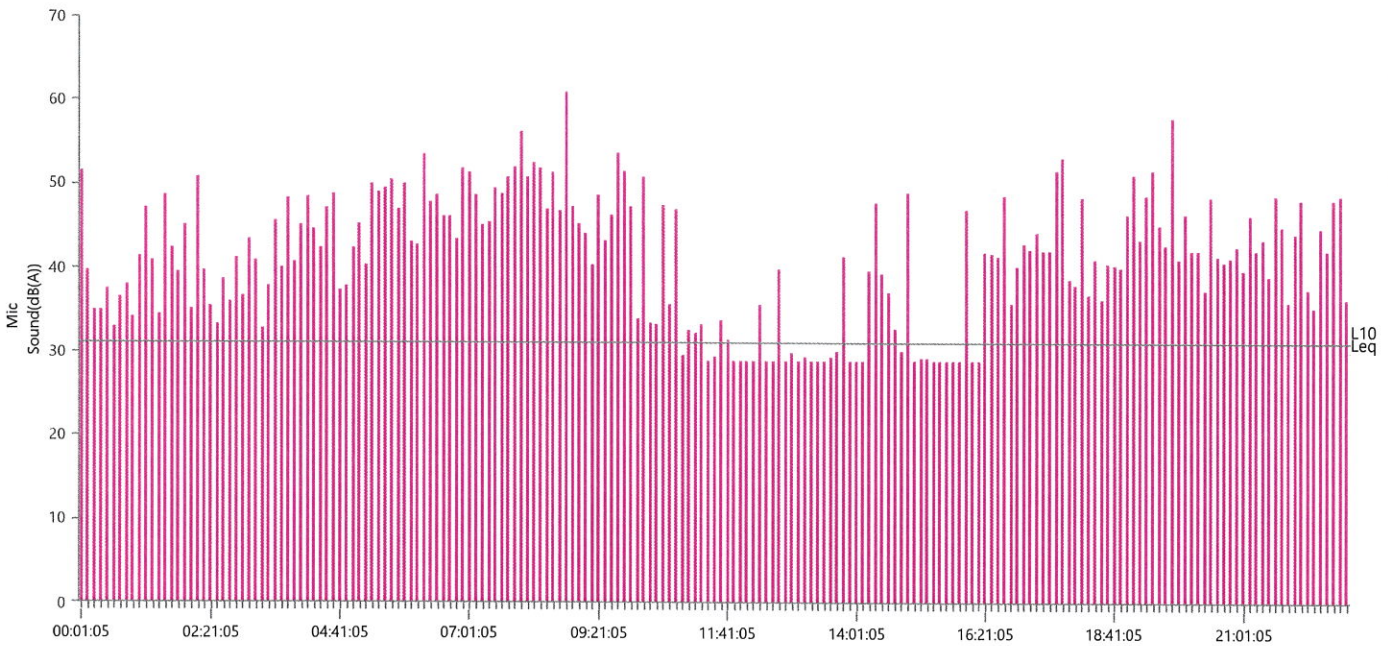
Notes
Location Noise 2
Client Spicewood Crushed Stone
Company Hwy 71 Quarry
General Notes IGS, Inc.

Extended Note Station 5N30.49911 W98.21538

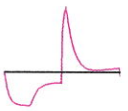
Post Event Notes No text to be displayed.

Sound Level Microphone
LMax 60.9 dB(A)
Date Mar 3, 2022
Time 08:46:05
Sound(dB(A))
Sensor Check ✓ Passed
Test Amplitude 1106 mv

A-Weight Slow			
LMin	L10	L90	Leq
<30	31	<30	31.0



Sensor Check



✓ Passed

Start March 3, 2022 00:00:05
Finish March 3, 2022 22:23:39
Number of Intervals/Interval 1343.56/60 sec
Sample Rate 4096 sps
Setup File Name Spicewood Hwy 71 - Noise 3.mmb
Operator Operator

Serial Number
Model Number
Battery Level
Unit Calibration
Event File Name
USB Sensor Support

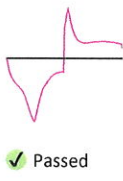
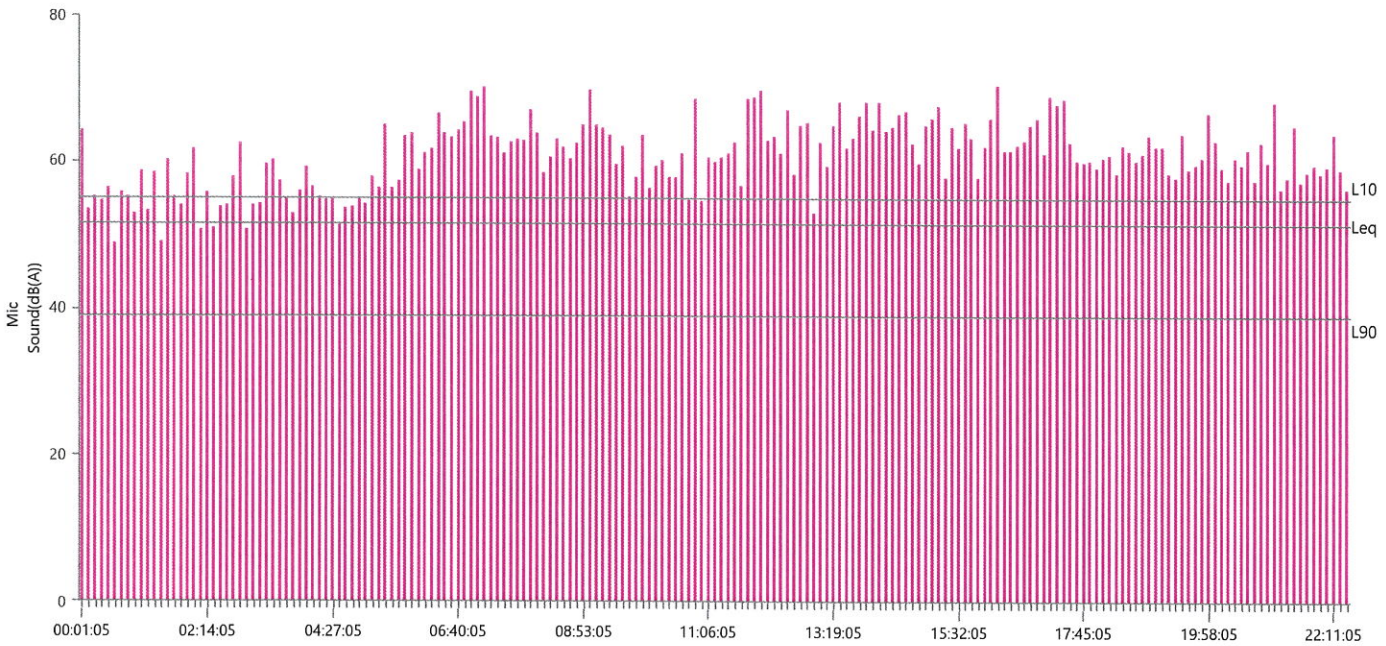
UM13416
 Micromate ISEE 10.90FB
 3.8 volts
 August 24, 2021 by InstanTEL
 UM13416_20220303000005.IDFH
 Disabled

Notes
Location Noise 3
Client Spicewood Crushed Stone
Company Hwy 71 Quarry
General Notes IGS, Inc.

Extended Note N30.490958 W98.213495
Post Event Notes No text to be displayed.

Sound Level Microphone A-Weight Slow
 LMax 70.6 dB(A)
 Date Mar 3, 2022
 Time 16:18:05
 Sound(dB(A)) LMin L10 L90 Leq
 34.6 55 39 51.5
 Sensor Check Passed
 Test Amplitude 1069 mv

Sensor Check



Waveform Trigger Source
 Trigger Level(s)
 Pre-Trigger/Record Time
 Sample Rate
 Setup File Name
 Operator

Vert at March 3, 2022 11:25:13
 Geo 0.0200 in/s, Mic 0.01029 psi
 0.50 sec/8.0 sec (Fixed)
 4096 sps
 Spicewood Hwy 71 - Station 1.mmb
 Operator

Serial Number
 Model Number
 Battery Level
 Unit Calibration
 Event File Name
 USB Sensor Support

UM8173
 Micromate ISEE 10.90FB
 3.8 volts
 September 2, 2021 by InstanTel
 UM8173_20220303112513.IDFW
 Disabled

Notes

Location Station 1
 Client Spicewood Crushed Stone
 Company Hwy 71 Quarry
 General Notes IGS, Inc.

Extended Note N30.49572 W98.21577

Post Event Notes No text to be displayed.

Geophone

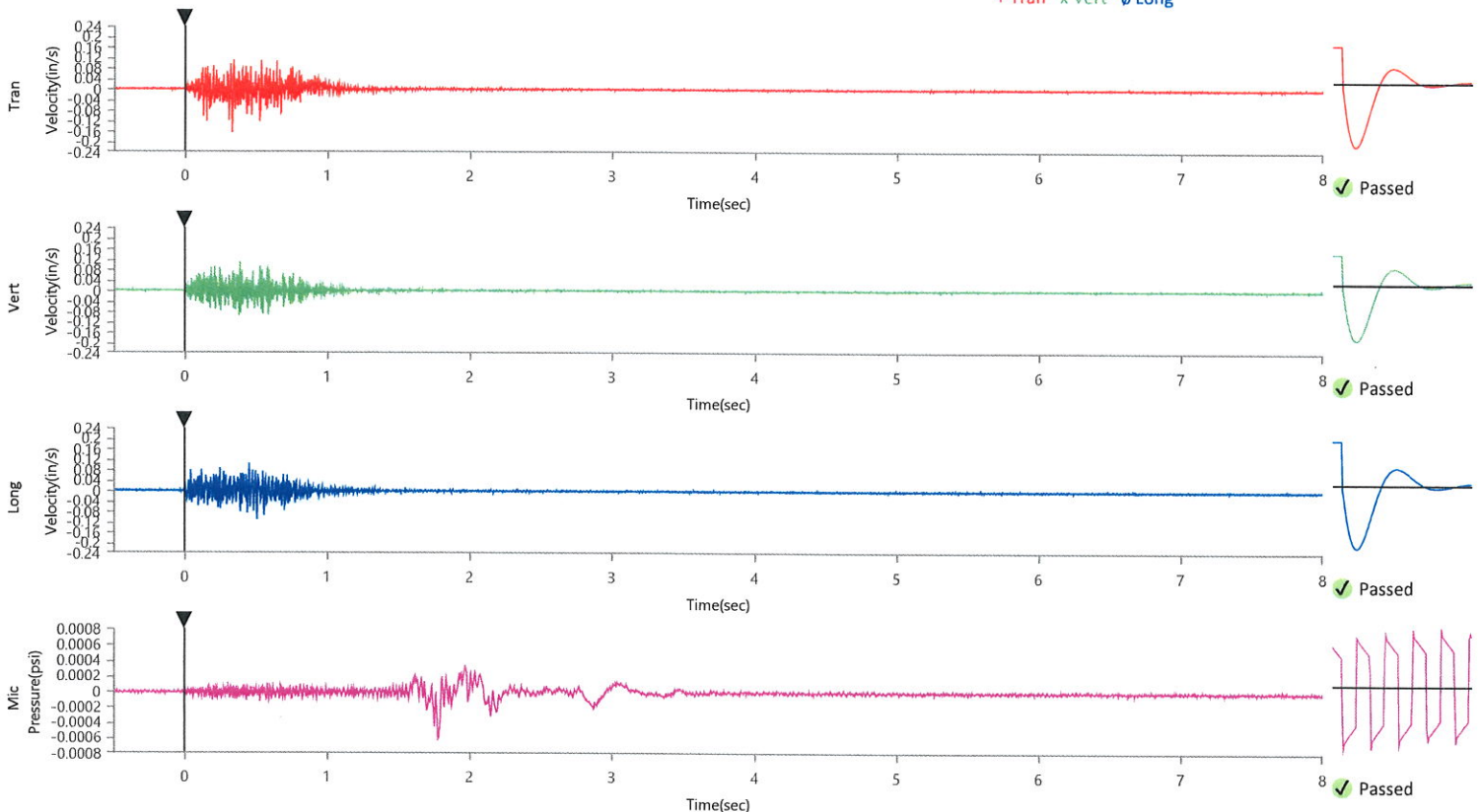
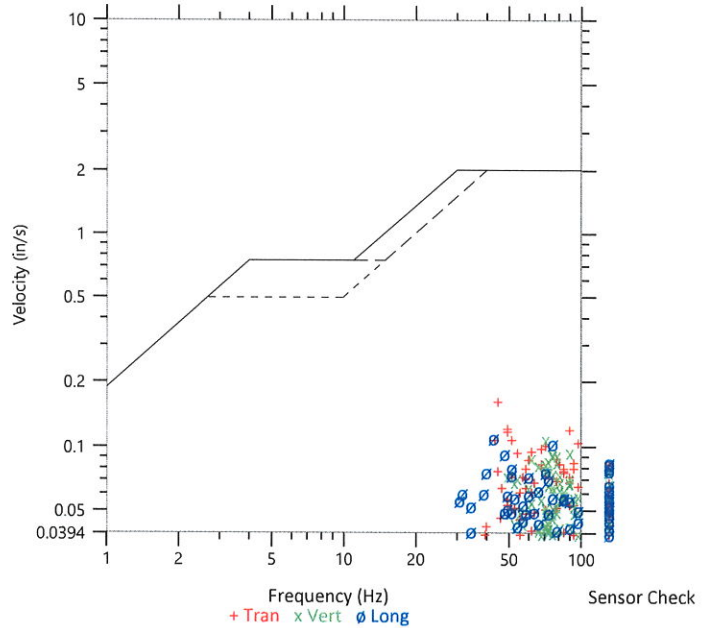
	Tran	Vert	Long
Peak Particle Velocity	0.1657 in/s	0.1089 in/s	0.1105 in/s
Zero Crossing Frequency	44.5 Hz	70.6 Hz	42.7 Hz
Time (Relative to Trigger)	0.333 sec	0.387 sec	0.509 sec
Peak Acceleration	0.184 g	0.155 g	0.211 g
Peak Displacement	0.000 in	0.000 in	0.000 in
Sensor Check	✓ Passed	✓ Passed	✓ Passed
Frequency	7.5 Hz	7.5 Hz	7.1 Hz
Overswing Ratio	4.1	3.4	3.7

Peak Vector Sum 0.1678 in/s at 0.333 sec

ISEE Linear Microphone

Peak Sound Pressure Level	0.000619 psi
Peak Sound Pressure Level	106.6 dB(L)
Time (Relative to Trigger)	1.779 sec
Zero Crossing Frequency	8.3 Hz
Sensor Check	✓ Passed
Frequency	19.7 Hz
Test Amplitude	1479 mv

USBM RI8507 And OSMRE
 Velocity versus Frequency (Zero Crossing)



Waveform Trigger Source
Trigger Level(s)
Pre-Trigger/Record Time
Sample Rate
Setup File Name
Operator

Tran at March 3, 2022 11:25:13
 Geo 0.0200 in/s, Mic 0.01029 psi
 0.50 sec/8.0 sec (Fixed)
 4096 sps
 Spicewood Hwy 71 - Station 2.mmb
 Operator

Serial Number
Model Number
Battery Level
Unit Calibration
Event File Name
USB Sensor Support

UM9068
 Micromate ISEE 10.90FB
 3.8 volts
 December 2, 2021 by InstanTel
 UM9068_20220303112513.IDFW
 Disabled

Notes

Location Station 2
 Client Spicewood Crushed Stone
 Company Hwy 71
 General Notes IGS, Inc

Extended Note N30.49650 W21572

Post Event Notes No text to be displayed.

Geophone

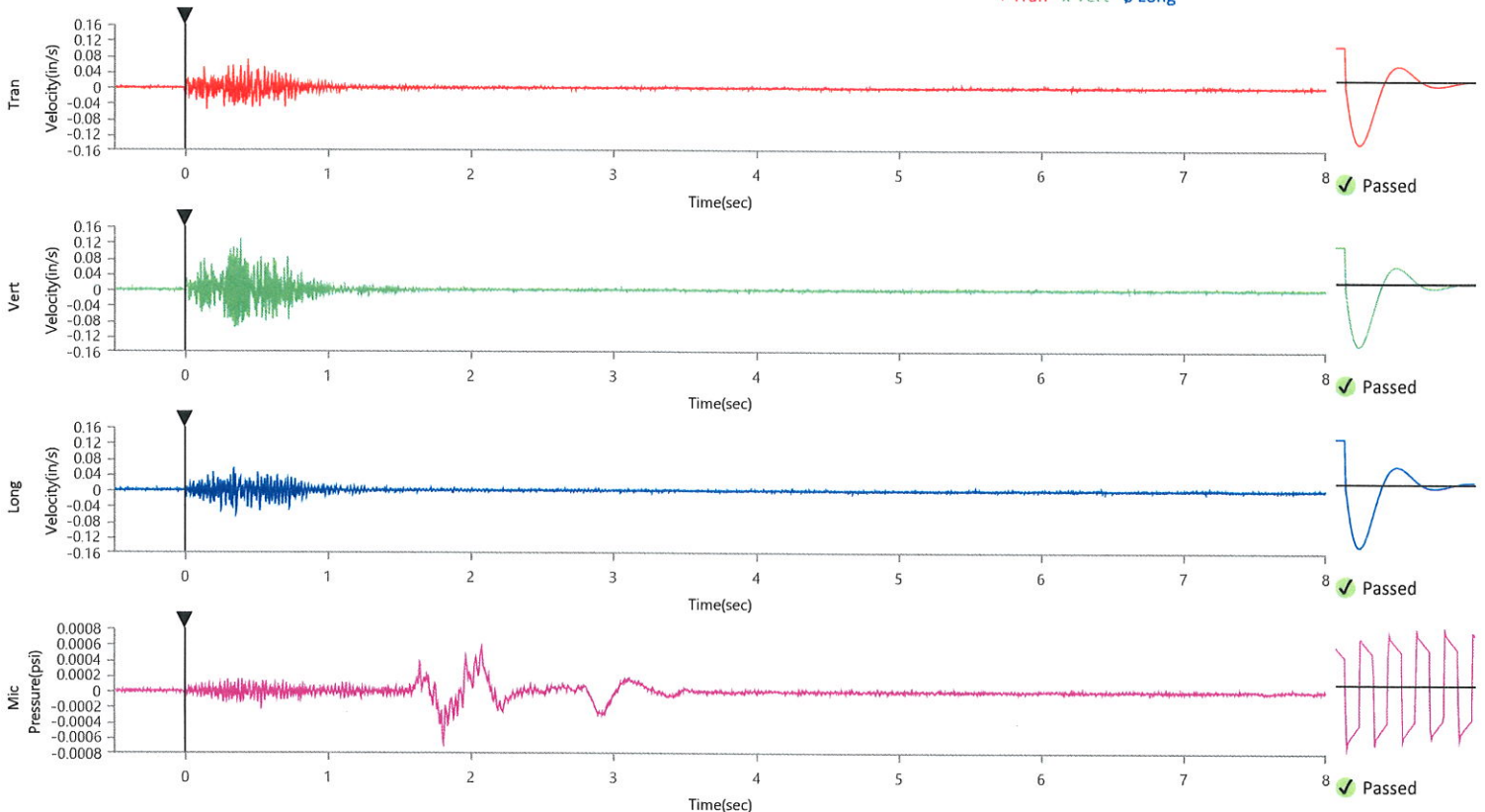
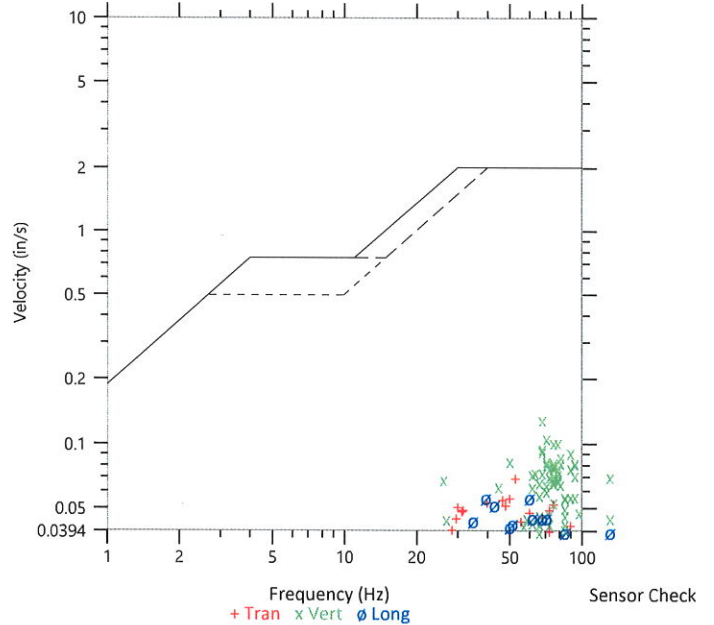
	Tran	Vert	Long
Peak Particle Velocity	0.0708 in/s	0.1306 in/s	0.0571 in/s
Zero Crossing Frequency	52.5 Hz	68.3 Hz	40.2 Hz
Time (Relative to Trigger)	0.440 sec	0.390 sec	0.360 sec
Peak Acceleration	0.082 g	0.148 g	0.069 g
Peak Displacement	0.000 in	0.000 in	0.000 in
Sensor Check	✓ Passed	✓ Passed	✓ Passed
Frequency	7.1 Hz	7.5 Hz	7.5 Hz
Overswing Ratio	4.2	3.8	3.6

Peak Vector Sum 0.1418 in/s at 0.390 sec

ISEE Linear Microphone

Peak Sound Pressure Level	0.000673 psi
Peak Sound Pressure Level	107.3 dB(L)
Time (Relative to Trigger)	1.807 sec
Zero Crossing Frequency	3.1 Hz
Sensor Check	✓ Passed
Frequency	19.7 Hz
Test Amplitude	1453 mv

USBM R18507 And OSMRE
 Velocity versus Frequency (Zero Crossing)



Waveform Trigger Source
Trigger Level(s)
Pre-Trigger/Record Time
Sample Rate
Setup File Name
Operator

Tran at March 3, 2022 11:25:13
 Geo 0.0200 in/s, Mic 0.01029 psi
 0.50 sec/8.0 sec (Fixed)
 4096 sps
 Spicewood Hwy 71 - Station 3.mmb
 Operator

Serial Number
Model Number
Battery Level
Unit Calibration
Event File Name
USB Sensor Support

UM6460
 Micromate ISEE 10.90FB
 3.8 volts
 September 9, 2021 by Instantel
 UM6460_20220303112513.IDFW
 Disabled

Notes

Location Station 3
 Client Spicewood Crushed Stone
 Company Hwy 71 Quarry
 General Notes IGS, Inc.

Extended Note N30.49742 W98.21566

Post Event Notes No text to be displayed.

Geophone

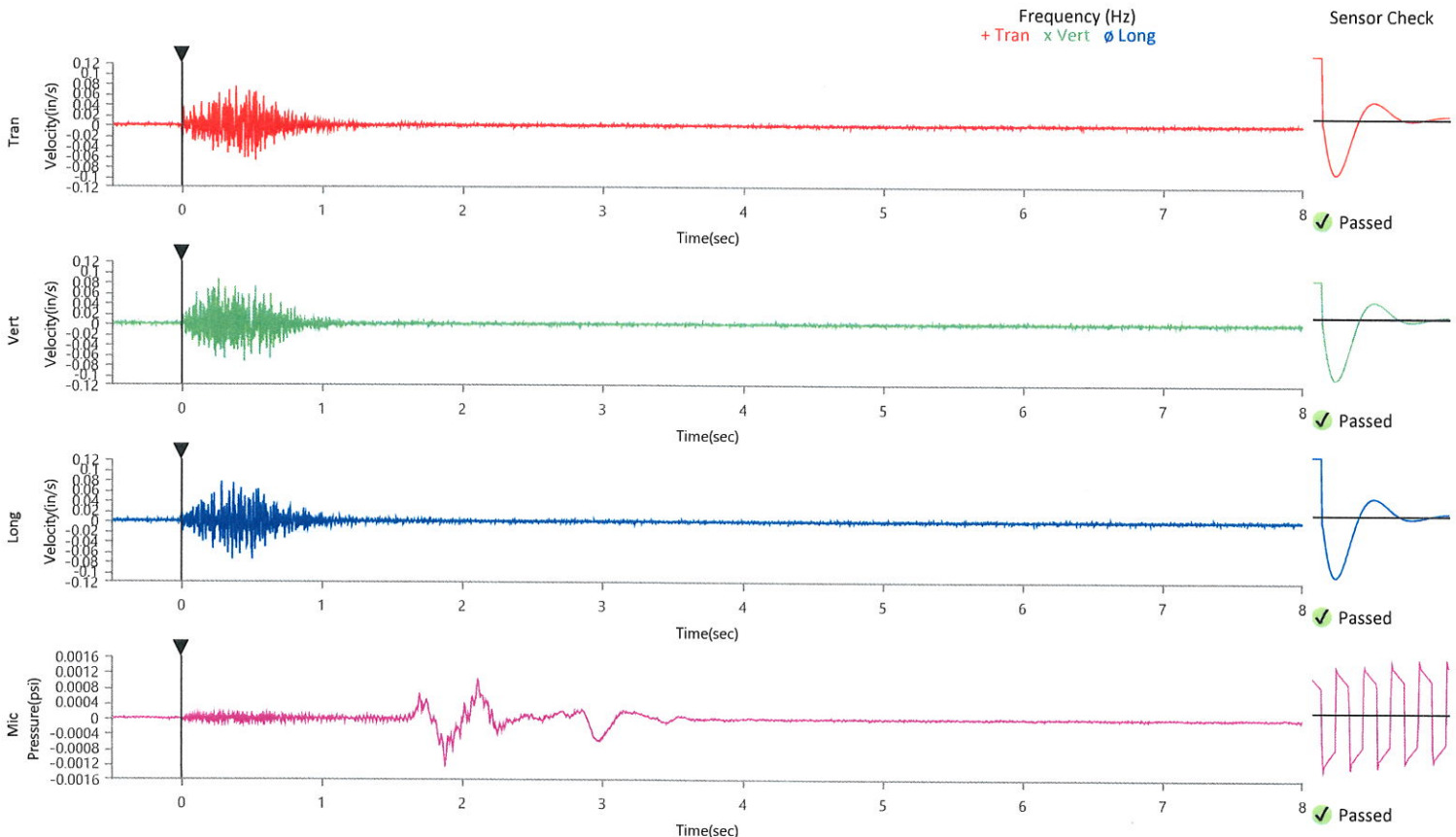
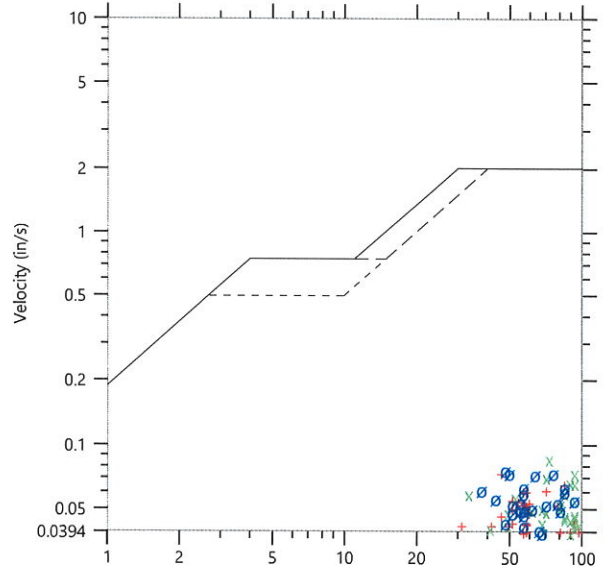
	Tran	Vert	Long
Peak Particle Velocity	0.0745 in/s	0.0869 in/s	0.0766 in/s
Zero Crossing Frequency	45.5 Hz	70.6 Hz	47.6 Hz
Time (Relative to Trigger)	0.385 sec	0.262 sec	0.286 sec
Peak Acceleration	0.158 g	0.135 g	0.122 g
Peak Displacement	0.000 in	0.000 in	0.000 in
Sensor Check	✓ Passed	✓ Passed	✓ Passed
Frequency	7.5 Hz	7.3 Hz	7.5 Hz
Overswing Ratio	3.1	3.8	3.5

Peak Vector Sum 0.1134 in/s at 0.525 sec

ISEE Linear Microphone

Peak Sound Pressure Level	0.001213 psi
Peak Sound Pressure Level	112.4 dB(L)
Time (Relative to Trigger)	1.878 sec
Zero Crossing Frequency	2.5 Hz
Sensor Check	✓ Passed
Frequency	19.7 Hz
Test Amplitude	1358 mv

USBM R18507 And OSMRE
 Velocity versus Frequency (Zero Crossing)



Waveform Trigger Source
Trigger Level(s)
Pre-Trigger/Record Time
Sample Rate
Setup File Name
Operator

Vert at March 3, 2022 11:25:13
 Geo 0.0200 in/s, Mic 0.01029 psi
 0.50 sec/8.0 sec (Fixed)
 4096 sps
 Spicewood Hwy 71 - Station 4.mmb
 Operator

Serial Number
Model Number
Battery Level
Unit Calibration
Event File Name
USB Sensor Support

UM7153
 Micromate ISEE 10.90FB
 3.8 volts
 September 16, 2021 by InstanTel
 UM7153_20220303112513.IDFW
 Disabled

Notes

Location Station 4
 Client Spicewood Crushed Stone
 Company Hwy 71 Quarry
 General Notes IGS, Inc.

Extended Note N30.49821 W98.21578

Post Event Notes No text to be displayed.

Geophone

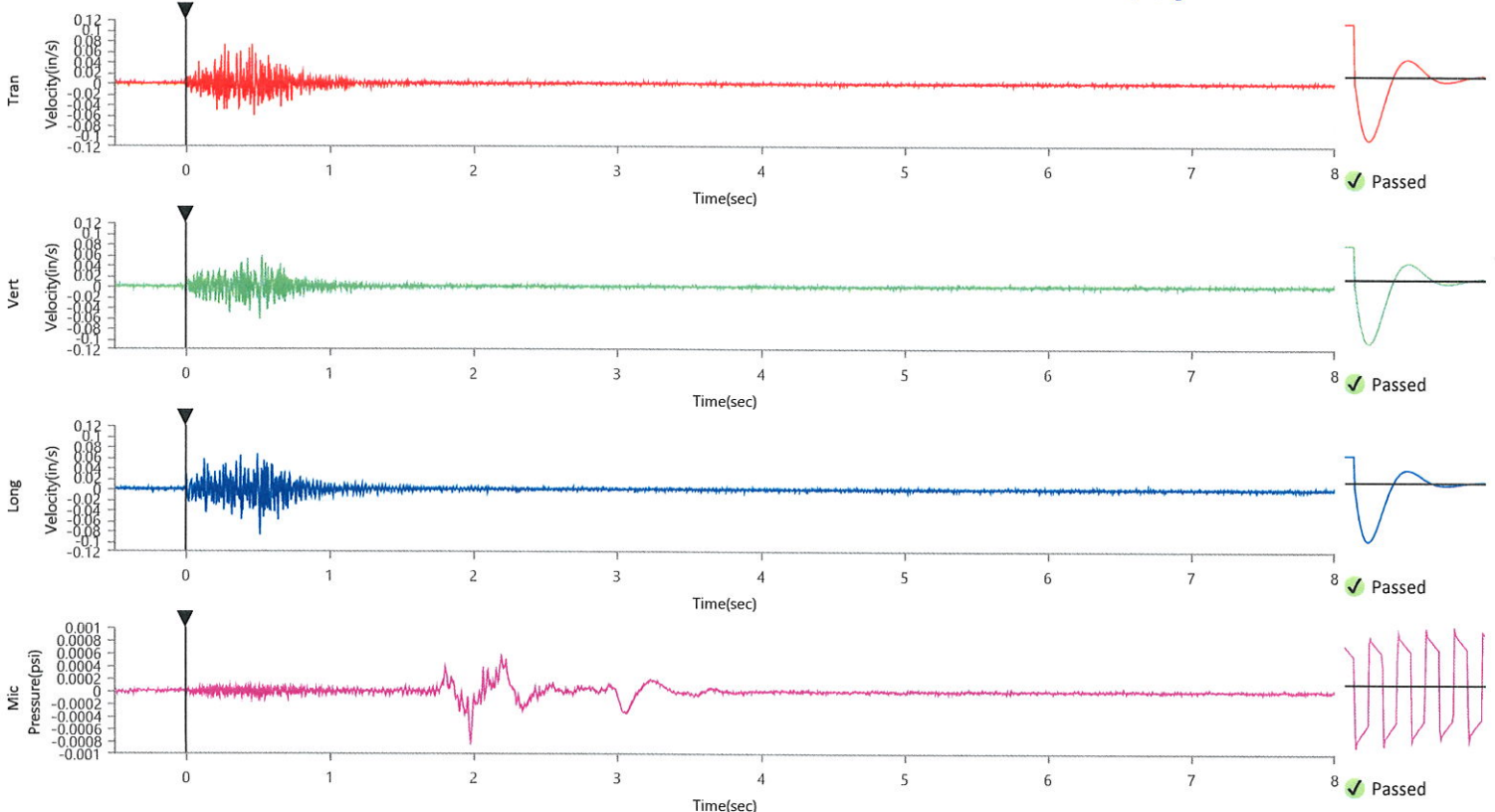
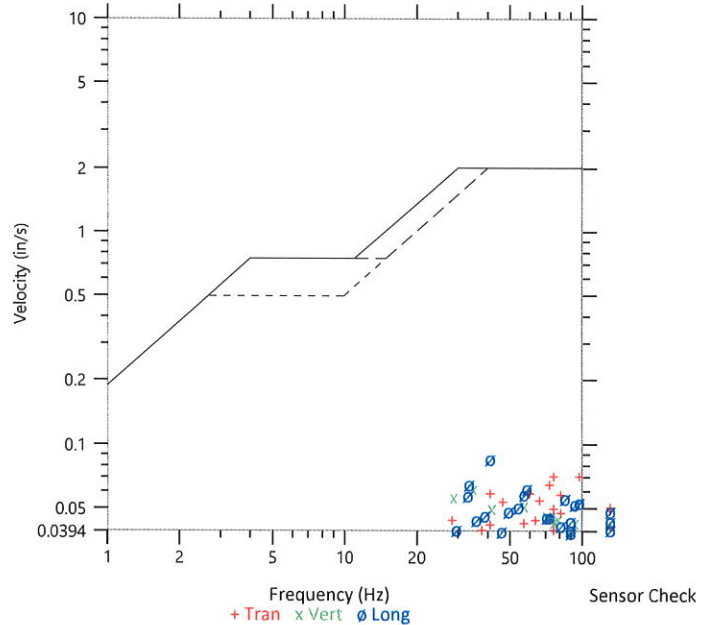
	Tran	Vert	Long
Peak Particle Velocity	0.0726 in/s	0.0630 in/s	0.0875 in/s
Zero Crossing Frequency	97.5 Hz	34.7 Hz	41.0 Hz
Time (Relative to Trigger)	0.270 sec	0.513 sec	0.516 sec
Peak Acceleration	0.109 g	0.082 g	0.089 g
Peak Displacement	0.000 in	0.000 in	0.000 in
Sensor Check	✓ Passed	✓ Passed	✓ Passed
Frequency	7.3 Hz	7.3 Hz	7.3 Hz
Overswing Ratio	3.7	3.7	4.7

Peak Vector Sum 0.0937 in/s at 0.516 sec

ISEE Linear Microphone

Peak Sound Pressure Level	0.000812 psi
Peak Sound Pressure Level	108.9 dB(L)
Time (Relative to Trigger)	1.977 sec
Zero Crossing Frequency	2.7 Hz
Sensor Check	✓ Passed
Frequency	19.7 Hz
Test Amplitude	1503 mv

USBM RI8507 And OSMRE
 Velocity versus Frequency (Zero Crossing)



Waveform Trigger Source
 Trigger Level(s)
 Pre-Trigger/Record Time
 Sample Rate
 Setup File Name
 Operator

Long at March 3, 2022 11:25:13
 Geo 0.0200 in/s, Mic 0.01029 psi
 0.50 sec/8.0 sec (Fixed)
 4096 sps
 Spicewood Hwy 71 - Station 5.mmb
 Operator

Serial Number
 Model Number
 Battery Level
 Unit Calibration
 Event File Name
 USB Sensor Support

UM13415
 Micromate ISEE 10.90FB
 3.8 volts
 September 16, 2021 by Instantel
 UM13415_20220303112513.IDFW
 Disabled

Notes

Location Station 5
 Client Spicewood Crushed Stone
 Company Hwy 71 Quarry
 General Notes IGS, Inc.

Extended Note N30.49911 W98.21538

Post Event Notes No text to be displayed.

Geophone

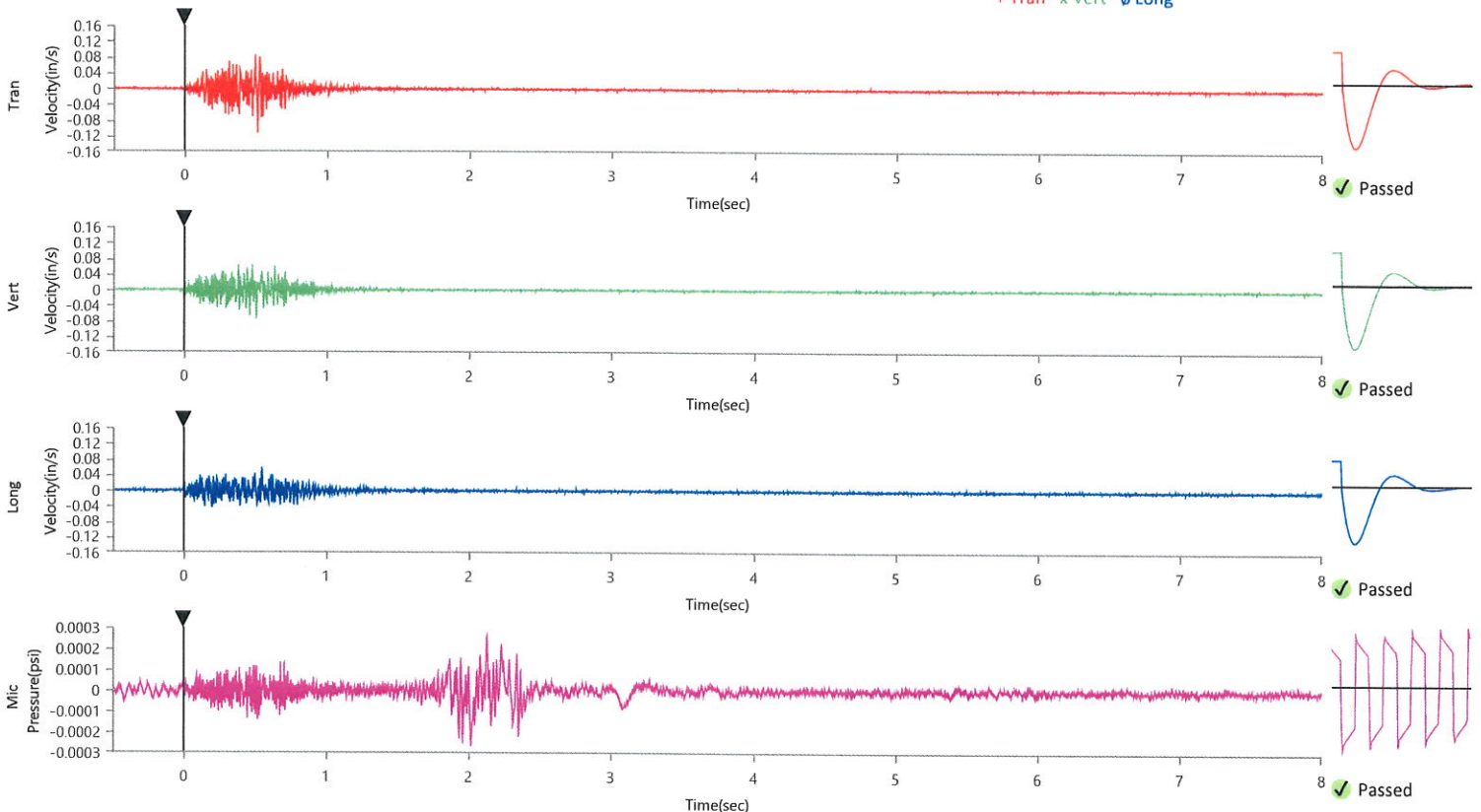
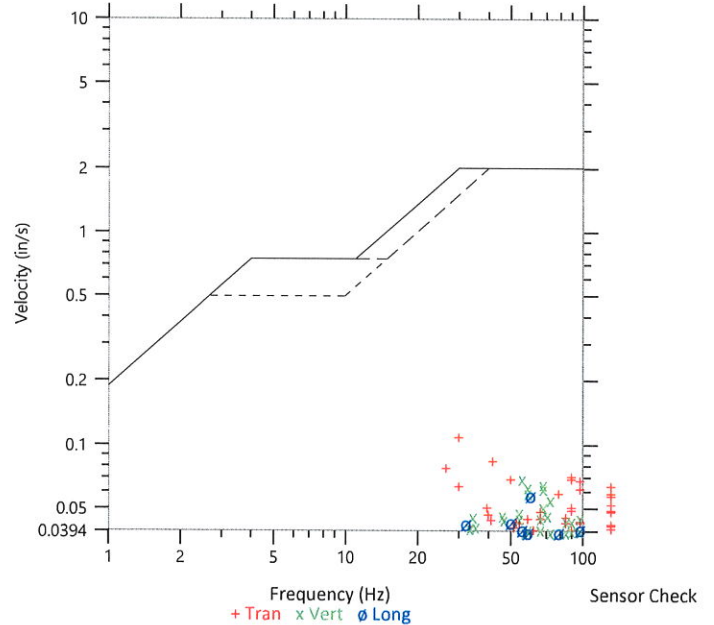
	Tran	Vert	Long
Peak Particle Velocity	0.1120 in/s	0.0701 in/s	0.0586 in/s
Zero Crossing Frequency	30.1 Hz	56.9 Hz	60.2 Hz
Time (Relative to Trigger)	0.513 sec	0.508 sec	0.547 sec
Peak Acceleration	0.142 g	0.115 g	0.092 g
Peak Displacement	0.000 in	0.000 in	0.000 in
Sensor Check	✓ Passed	✓ Passed	✓ Passed
Frequency	7.5 Hz	7.5 Hz	7.3 Hz
Overswing Ratio	4.1	4.6	4.9

Peak Vector Sum 0.1163 in/s at 0.514 sec

ISEE Linear Microphone

Peak Sound Pressure Level	0.000266 psi
Peak Sound Pressure Level	99.2 dB(L)
Time (Relative to Trigger)	2.014 sec
Zero Crossing Frequency	11.4 Hz
Sensor Check	✓ Passed
Frequency	20.5 Hz
Test Amplitude	1474 mv

USBM R18507 And OSMRE
 Velocity versus Frequency (Zero Crossing)



Waveform Trigger Source
 Trigger Level(s)
 Pre-Trigger/Record Time
 Sample Rate
 Setup File Name
 Operator

Vert at March 3, 2022 11:25:13
 Geo 0.0200 in/s, Mic 0.01029 psi
 0.50 sec/8.0 sec (Fixed)
 4096 sps
 Spicewood Hwy 71 - Station 6.mmb
 Operator

Serial Number
 Model Number
 Battery Level
 Unit Calibration
 Event File Name
 USB Sensor Support

UM7453
 Micromate ISEE 10.90FB
 3.8 volts
 September 16, 2021 by Instantel
 UM7453_20220303112513.IDFW
 Disabled

Notes

Location Station 6
 Client Spicewood Crushed Stone
 Company Hwy 71 Quarry
 General Notes IGS, Inc.

Extended Note N30.495113 W98.206539

Post Event Notes No text to be displayed.

Geophone

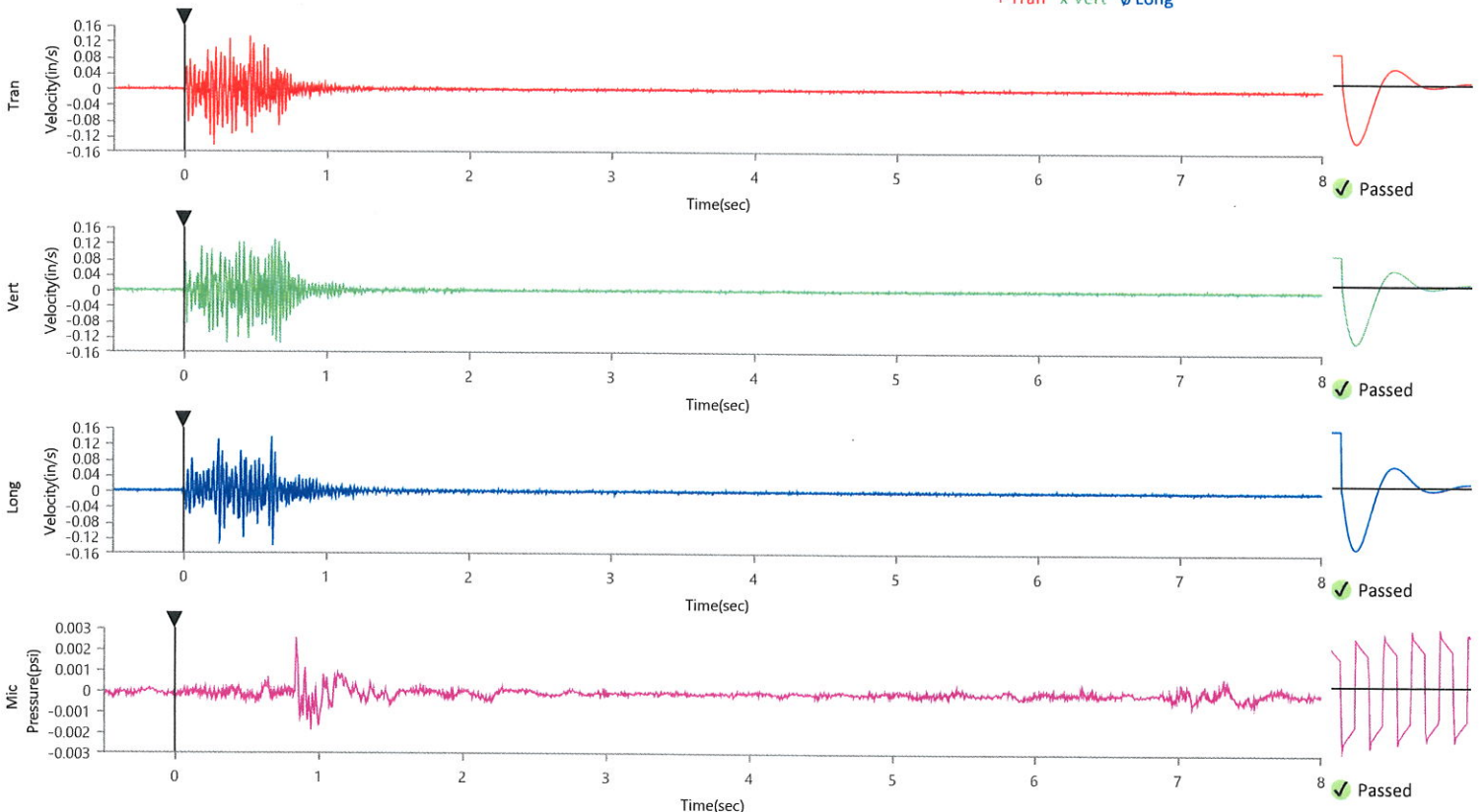
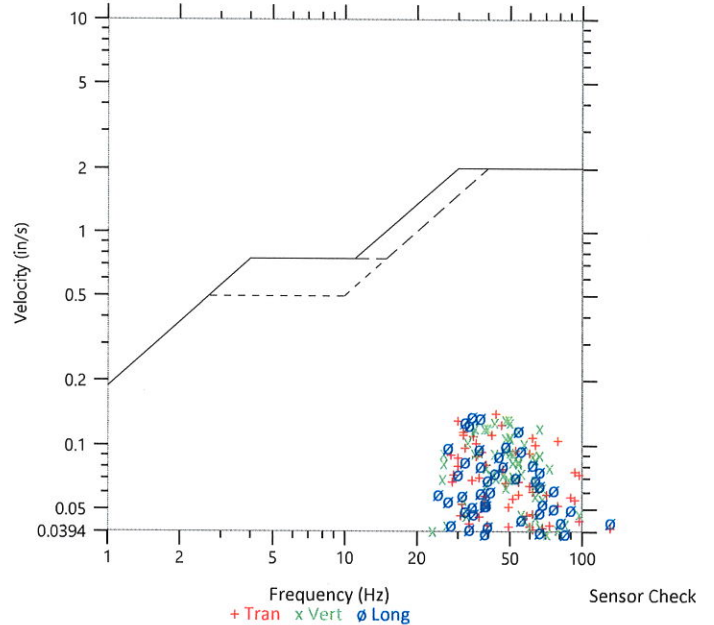
	Tran	Vert	Long
Peak Particle Velocity	0.1431 in/s	0.1362 in/s	0.1396 in/s
Zero Crossing Frequency	43.6 Hz	48.8 Hz	34.1 Hz
Time (Relative to Trigger)	0.205 sec	0.674 sec	0.627 sec
Peak Acceleration	0.142 g	0.138 g	0.148 g
Peak Displacement	0.001 in	0.001 in	0.001 in
Sensor Check	✓ Passed	✓ Passed	✓ Passed
Frequency	7.3 Hz	7.3 Hz	7.5 Hz
Overswing Ratio	3.7	3.7	3.1

Peak Vector Sum 0.1786 in/s at 0.253 sec

ISEE Linear Microphone

Peak Sound Pressure Level	0.002545 psi
Peak Sound Pressure Level	118.9 dB(L)
Time (Relative to Trigger)	0.842 sec
Zero Crossing Frequency	20.7 Hz
Sensor Check	✓ Passed
Frequency	19.7 Hz
Test Amplitude	1496 mv

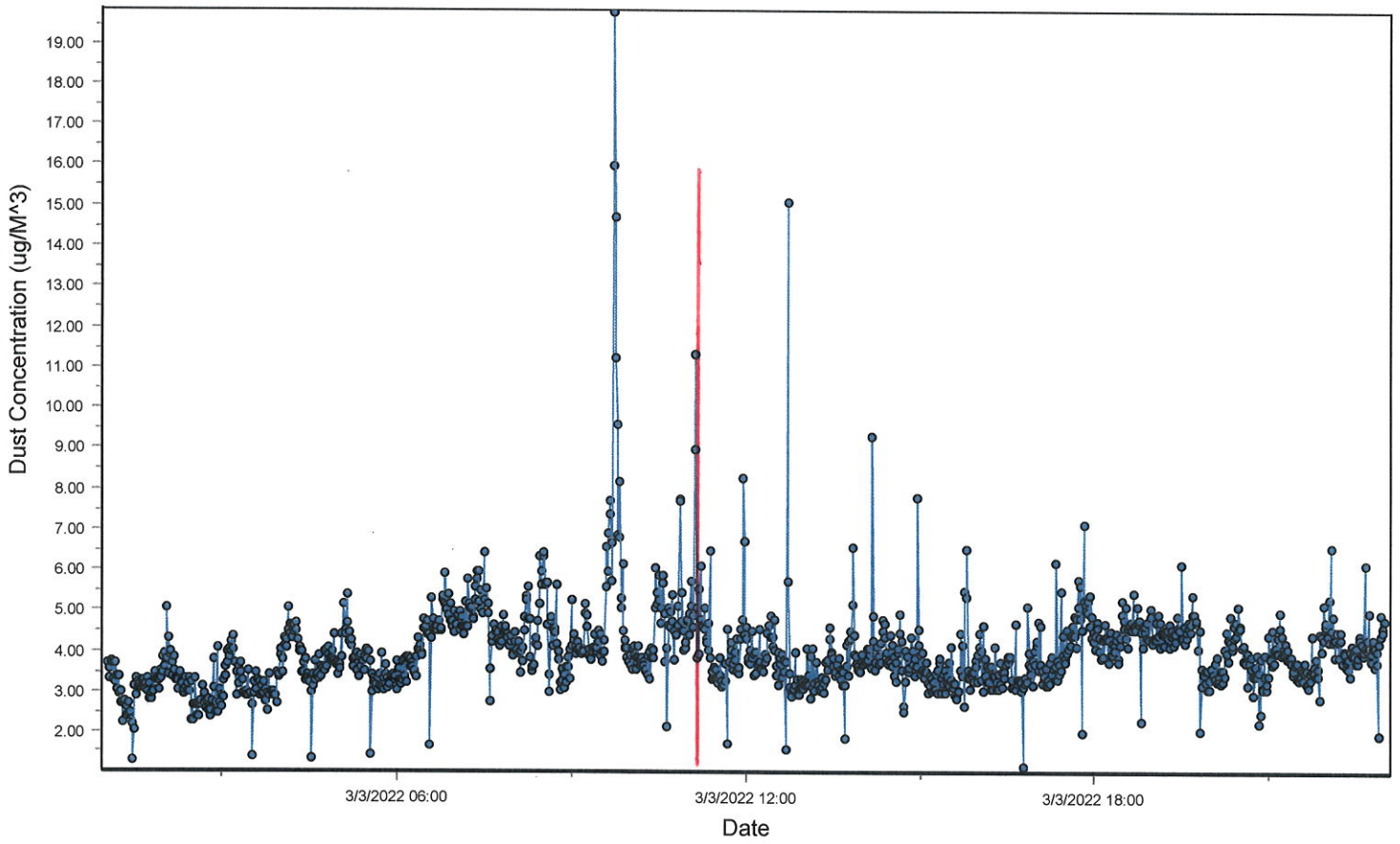
USBM R18507 And OSMRE
 Velocity versus Frequency (Zero Crossing)



Spicewood Crushed Stone - Hwy 71 Quarry

South Dust Monitor

D100@AvgPartL



Spicewood Crushed Stone - Hwy 71 Quarry

North Dust Monitor

• D100@AvgPartL

