

Date/Time	Unit	Unit Location	Blast		Blast Location	Distance	PPV	Geo ZCF	Sound Level Microphone		
			Blast Number	Unit Location					PSPL	Peak	Time of Peak
06/21/22 0:00	UM13917	Noise 2	10-22	Floor/NE	2339.2 ft	-	-	-	54.5 dB(A)	8:28:05	31.7 dB
06/21/22 0:00	UM13416	Noise 3	10-22	Floor/NE	2188.6 ft	-	-	-	75.3 dB(A)	8:28:05	47.8 dB
06/21/22 14:58	UM8046	Station 1	10-22	Floor/NE	2089.9 ft	0.1220 in/s	70.6 Hz	111.1 dB(L)	-	-	-
06/21/22 14:58	UM9068	Station 2	10-22	Floor/NE	2094.8 ft	0.0528 in/s	68.3 Hz	109.8 dB(L)	-	-	-
06/21/22 14:58	UM6548	Station 3	10-22	Floor/NE	2153.5 ft	0.0676 in/s	73.1 Hz	108.0 dB(L)	-	-	-
06/21/22 14:58	UM7153	Station 4	10-22	Floor/NE	2292.3 ft	0.0583 in/s	68.3 Hz	104.9 dB(L)	-	-	-
06/21/22 14:58	UM13415	Station 5	10-22	Floor/NE	2341.8 ft	0.0583 in/s	68.3 Hz	100.7 dB(L)	-	-	-
06/21/22 14:58	UM7453	Station 6	10-22	Floor/NE	839.9 ft	0.1933 in/s	58.5 Hz	116.2 dB(L)	-	-	-

**Start** June 21, 2022 00:00:05  
**Finish** June 21, 2022 23:29:59  
**Number of Intervals/Interval** 1409.91/60 sec  
**Sample Rate** 4096 sps  
**Setup File Name** Spicewood Hwy 71 - Noise 2.mmb  
**Operator** Operator

**Serial Number** UM13917  
**Model Number** Micromate ISEE 10.90GC  
**Battery Level** 3.8 volts  
**Unit Calibration** November 23, 2021 by InstanTel  
**Microphone Calibration** UA10858, May 9, 2022 by InstanTel  
**Event File Name** UM13917\_20220621000005.IDFH  
**USB Sensor Support** Disabled

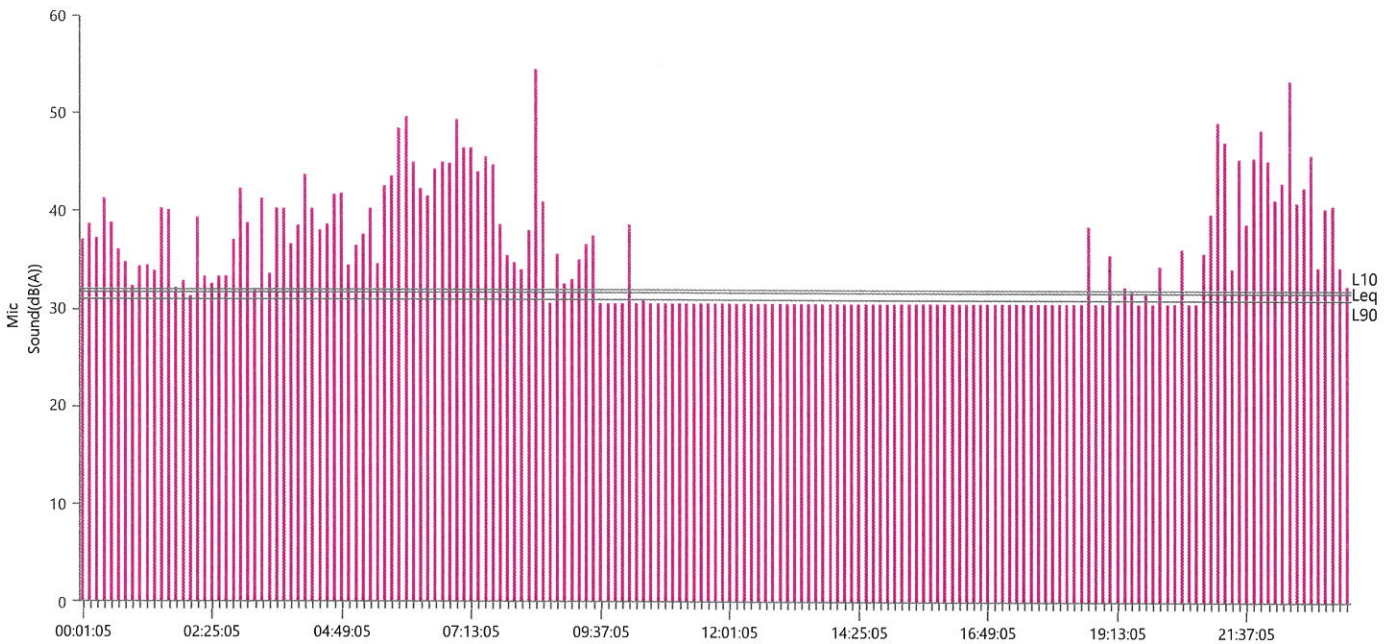
**Notes**  
**Location** Noise 2  
**Client** Spicewood Crushed Stone  
**Company** Hwy 71 Quarry  
**General Notes** IGS, Inc.

**Extended Note** Station 5N30.49911 W98.21538

**Post Event Notes** No text to be displayed.

**Sound Level Microphone**  
**LMax** 54.5 dB(A)  
**Date** Jun 21, 2022  
**Time** 08:28:05  
**Sound(dB(A))**  
**Sensor Check** ✓ Passed  
**Test Amplitude** 996 mv

A-Weight Slow			
LMin	L10	L90	Leq
30.4	32	31	31.7



**Start** June 21, 2022 00:00:05  
**Finish** June 21, 2022 23:29:59  
**Number of Intervals/Interval** 1409.91/60 sec  
**Sample Rate** 4096 sps  
**Setup File Name** Spicewood Hwy 71 - Noise 3.mmb  
**Operator** Operator

**Serial Number** UM13416  
**Model Number** Micromate ISEE 10.90GC  
**Battery Level** 3.8 volts  
**Unit Calibration** August 24, 2021 by InstanTel  
**Microphone Calibration** UA10983, November 8, 2021 by InstanTel  
**Event File Name** UM13416\_20220621000005.IDFH  
**USB Sensor Support** Disabled

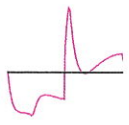
**Notes**  
**Location** Noise 3  
**Client** Spicewood Crushed Stone  
**Company** Hwy 71 Quarry  
**General Notes** IGS, Inc.

**Extended Note** N30.490958 W98.213495  
**Post Event Notes** No text to be displayed.

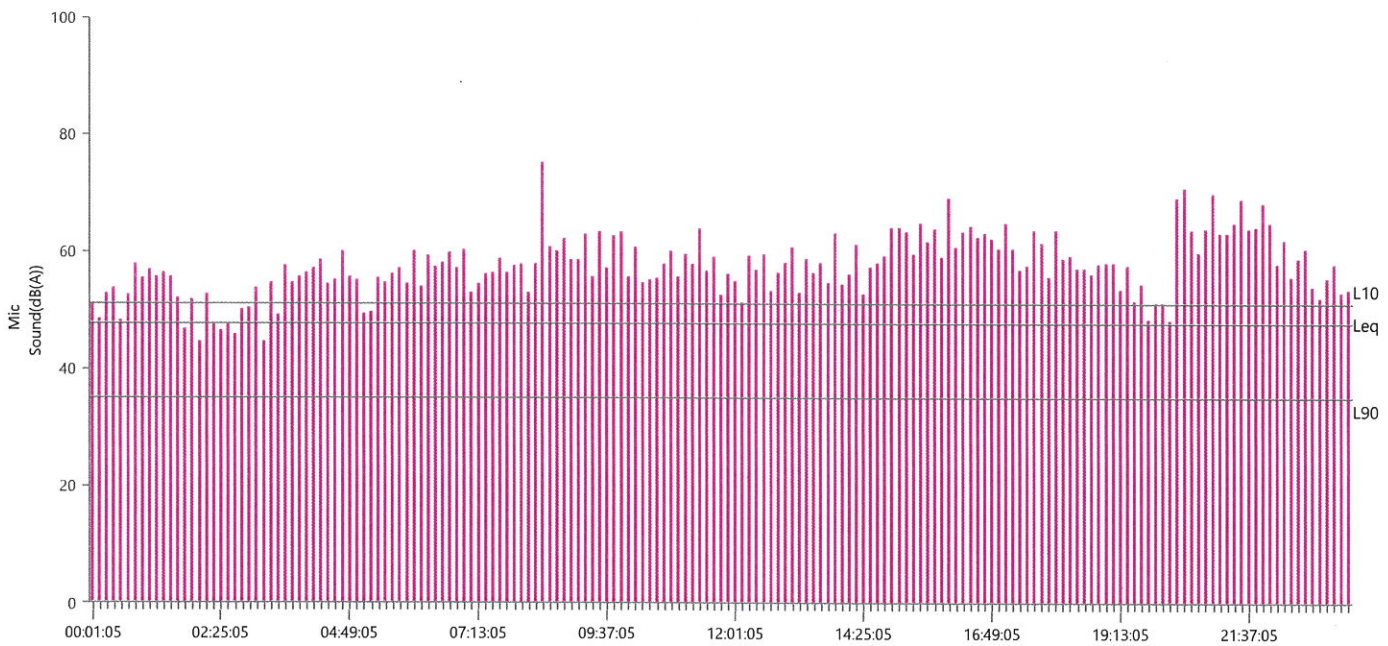
**Sound Level Microphone**  
**LMax** 75.3 dB(A)  
**Date** Jun 21, 2022  
**Time** 08:28:05  

	LMin	L10	L90	Leq
Sound(dB(A))	31.9	51	35	47.8
Sensor Check	✓ Passed			
Test Amplitude	1042 mv			

Sensor Check



✓ Passed



Waveform Trigger Source  
 Trigger Level(s)  
 Trigger Level (Mic)  
 Pre-Trigger/Record Time  
 Sample Rate  
 Setup File Name  
 Operator

Long at June 21, 2022 14:58:24  
 Geo 0.0200 in/s  
 Mic 0.01029 psi, 131 dB(L)  
 0.50 sec/8.0 sec (Fixed)  
 4096 sps  
 Spicewood Hwy 71 - Station 1.mmb  
 Operator

Serial Number  
 Model Number  
 Battery Level  
 Unit Calibration  
 Event File Name  
 USB Sensor Support

UM8046  
 Micromate ISEE 10.90GC  
 3.8 volts  
 May 6, 2022 by InstanTel  
 UM8046\_20220621145824.IDFW  
 Disabled

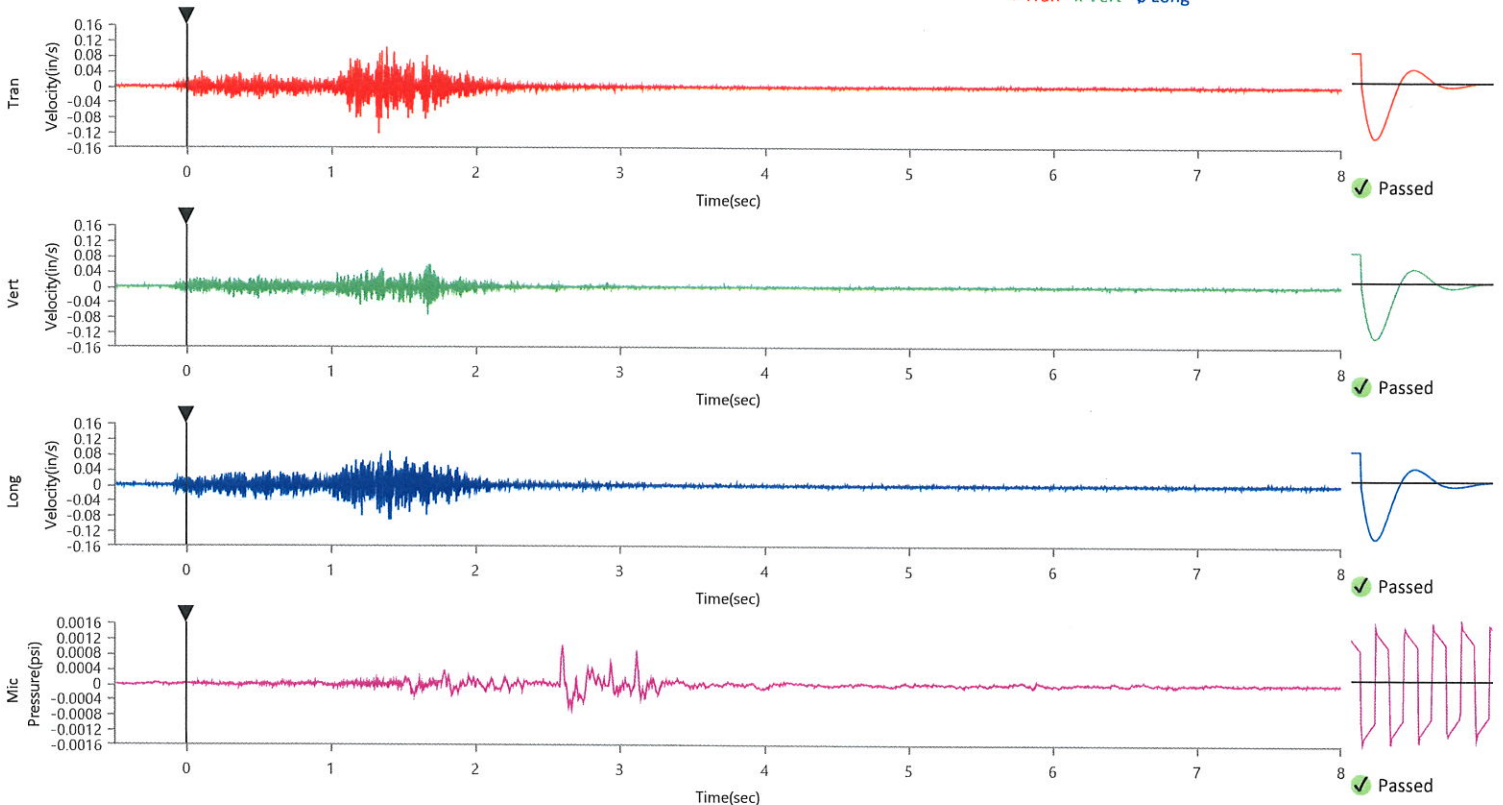
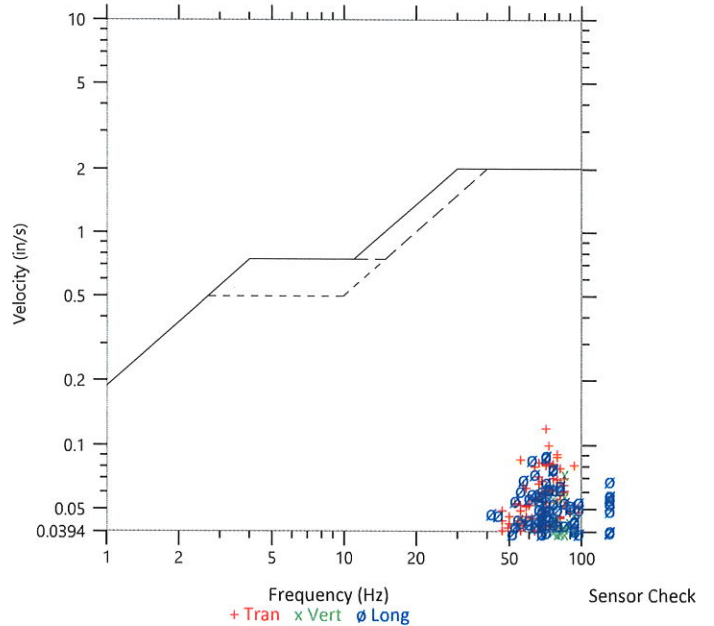
**Notes**  
 Location Station 1  
 Client Spicewood Crushed Stone  
 Company Hwy 71 Quarry  
 General Notes IGS, Inc.

**Extended Note** N30.49572 W98.21577  
**Post Event Notes** No text to be displayed.

Geophone	Tran	Vert	Long
Peak Particle Velocity	0.1220 in/s	0.0745 in/s	0.0906 in/s
Zero Crossing Frequency	70.6 Hz	85.3 Hz	70.6 Hz
Time (Relative to Trigger)	1.325 sec	1.666 sec	1.415 sec
Peak Acceleration	0.155 g	0.099 g	0.132 g
Peak Displacement	0.000 in	0.000 in	0.000 in
Sensor Check	✓ Passed	✓ Passed	✓ Passed
Frequency	7.5 Hz	7.3 Hz	7.1 Hz
Overswing Ratio	4.1	3.9	4.4
Peak Vector Sum	0.1344 in/s at 1.325 sec		

ISEE Linear Microphone	
Peak Sound Pressure Level	0.001040 psi
Peak Sound Pressure Level	111.1 dB(L)
Time (Relative to Trigger)	2.601 sec
Zero Crossing Frequency	11.6 Hz
Sensor Check	✓ Passed
Frequency	20.5 Hz
Test Amplitude	1252 mv

USBM RI8507 And OSMRE  
 Velocity versus Frequency (Zero Crossing)





Waveform Trigger Source  
 Trigger Level(s)  
 Trigger Level (Mic)  
 Pre-Trigger/Record Time  
 Sample Rate  
 Setup File Name  
 Operator

Vert at June 21, 2022 14:58:23  
 Geo 0.0200 in/s  
 Mic 0.01029 psi, 131 dB(L)  
 0.50 sec/8.0 sec (Fixed)  
 4096 sps  
 Spicewood Hwy 71 - Station 2.mmb  
 Operator

Serial Number  
 Model Number  
 Battery Level  
 Unit Calibration  
 Event File Name  
 USB Sensor Support

UM9068  
 Micromate ISEE 10.90FB  
 3.8 volts  
 December 2, 2021 by InstanTel  
 UM9068\_20220621145823.IDFW  
 Disabled

**Notes**

Location Station 2  
 Client Spicewood Crushed Stone  
 Company Hwy 71  
 General Notes IGS, Inc

Extended Note N30.49650 W21572

Post Event Notes No text to be displayed.

**Geophone**

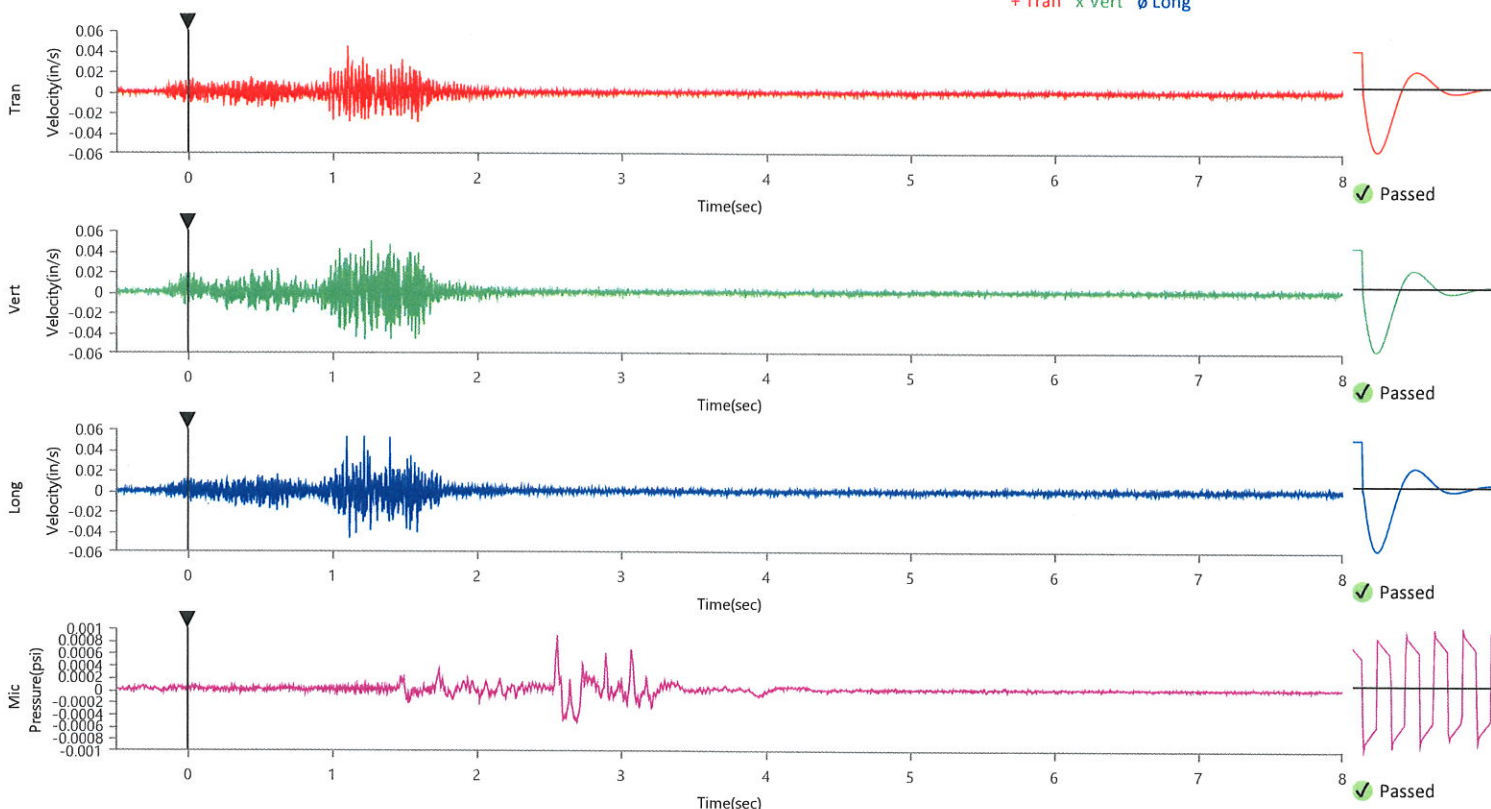
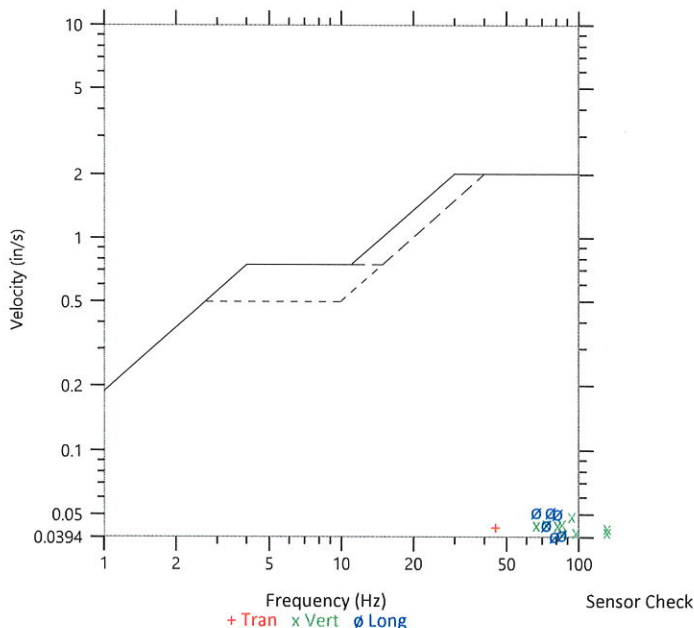
	Tran	Vert	Long
Peak Particle Velocity	0.0447 in/s	0.0503 in/s	0.0528 in/s
Zero Crossing Frequency	44.5 Hz	93.1 Hz	68.3 Hz
Time (Relative to Trigger)	1.102 sec	1.266 sec	1.096 sec
Peak Acceleration	0.076 g	0.086 g	0.079 g
Peak Displacement	0.000 in	0.000 in	0.000 in
Sensor Check	✓ Passed	✓ Passed	✓ Passed
Frequency	7.3 Hz	7.5 Hz	7.5 Hz
Overswing Ratio	3.9	3.6	3.4

Peak Vector Sum 0.0699 in/s at 1.396 sec

**ISEE Linear Microphone**

Peak Sound Pressure Level 0.000898 psi  
 Peak Sound Pressure Level 109.8 dB(L)  
 Time (Relative to Trigger) 2.555 sec  
 Zero Crossing Frequency 8.1 Hz  
 Sensor Check ✓ Passed  
 Frequency 19.7 Hz  
 Test Amplitude 1229 mv

USBM R18507 And OSMRE  
 Velocity versus Frequency (Zero Crossing)



**Waveform Trigger Source**  
**Trigger Level(s)**  
**Trigger Level (Mic)**  
**Pre-Trigger/Record Time**  
**Sample Rate**  
**Setup File Name**  
**Operator**

Vert at June 21, 2022 14:58:23  
 Geo 0.0200 in/s  
 Mic 0.01029 psi, 131 dB(L)  
 0.50 sec/8.0 sec (Fixed)  
 4096 sps  
 Spicewood Hwy 71 - Station 3.mmb  
 Operator

**Serial Number**  
**Model Number**  
**Battery Level**  
**Unit Calibration**  
**Event File Name**  
**USB Sensor Support**

UM6548  
 Micromate ISEE 10.90GC  
 3.8 volts  
 April 19, 2022 by InstanTel  
 UM6548\_20220621145823.IDFW  
 Disabled

**Notes**

Location Station 3  
 Client Spicewood Crushed Stone  
 Company Hwy 71 Quarry  
 General Notes IGS, Inc.

**Extended Note** N30.49742 W98.21566

**Post Event Notes** No text to be displayed.

**Geophone**

Peak Particle Velocity  
 Zero Crossing Frequency  
 Time (Relative to Trigger)  
 Peak Acceleration  
 Peak Displacement  
 Sensor Check  
 Frequency  
 Overswing Ratio

Tran	Vert	Long
0.0596 in/s	0.0496 in/s	0.0676 in/s
60.2 Hz	>100 Hz	73.1 Hz
1.189 sec	1.152 sec	1.159 sec
0.063 g	0.095 g	0.086 g
0.000 in	0.000 in	0.000 in
✓ Passed	✓ Passed	✓ Passed
7.3 Hz	7.5 Hz	7.5 Hz
3.5	3.5	3.1

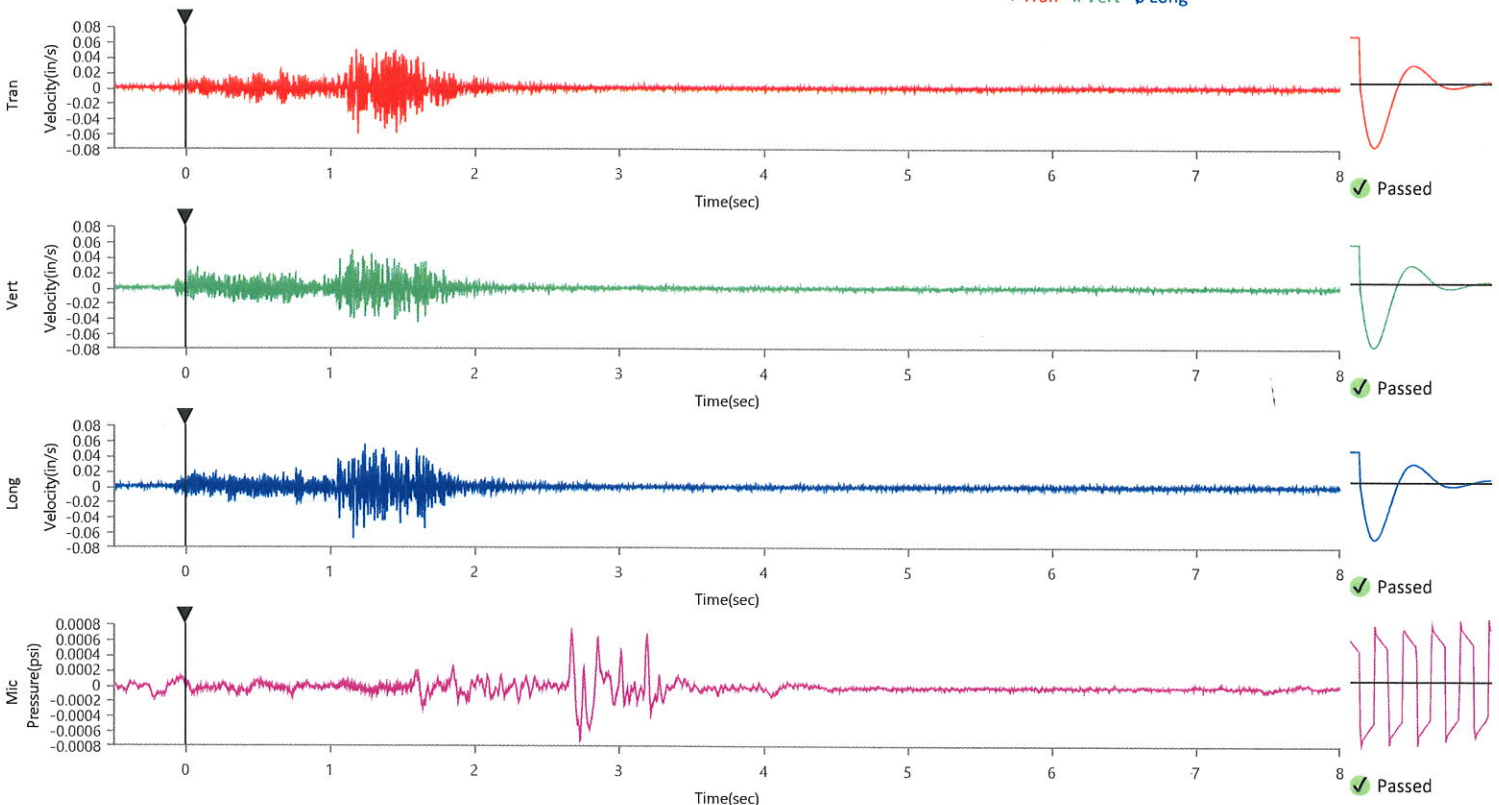
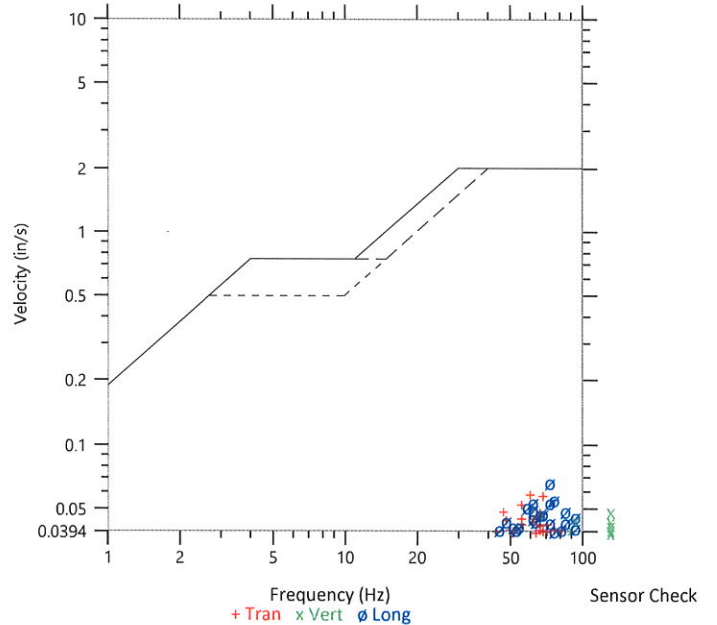
Peak Vector Sum 0.0731 in/s at 1.158 sec

**ISEE Linear Microphone**

Peak Sound Pressure Level  
 Peak Sound Pressure Level  
 Time (Relative to Trigger)  
 Zero Crossing Frequency  
 Sensor Check  
 Frequency  
 Test Amplitude

0.000725 psi  
 108.0 dB(L)  
 2.729 sec  
 9.4 Hz  
 ✓ Passed  
 20.5 Hz  
 1287 mv

**USBM RI8507 And OSMRE**  
 Velocity versus Frequency (Zero Crossing)



Waveform Trigger Source  
 Trigger Level(s)  
 Trigger Level (Mic)  
 Pre-Trigger/Record Time  
 Sample Rate  
 Setup File Name  
 Operator

Long at June 21, 2022 14:58:23  
 Geo 0.0200 in/s  
 Mic 0.01029 psi, 131 dB(L)  
 0.50 sec/8.0 sec (Fixed)  
 4096 sps  
 Spicewood Hwy 71 - Station 4.mmb  
 Operator

Serial Number  
 Model Number  
 Battery Level  
 Unit Calibration  
 Event File Name  
 USB Sensor Support

UM7153  
 Micromate ISEE 10.90FB  
 3.8 volts  
 September 16, 2021 by InstanTel  
 UM7153\_20220621145823.IDFW  
 Disabled

**Notes**

Location Station 4  
 Client Spicewood Crushed Stone  
 Company Hwy 71 Quarry  
 General Notes IGS, Inc.

Extended Note N30.49821 W98.21578

Post Event Notes No text to be displayed.

**Geophone**

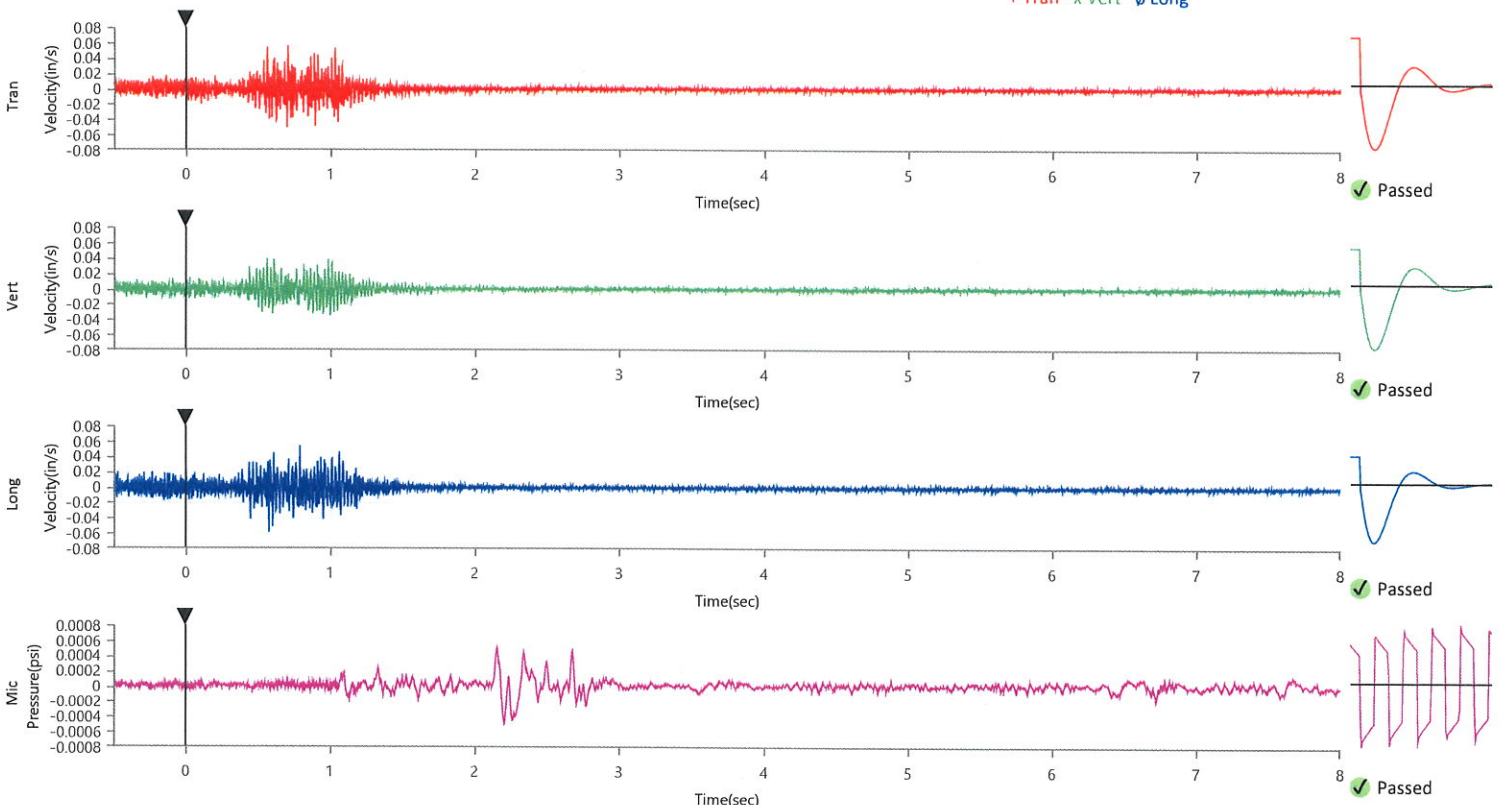
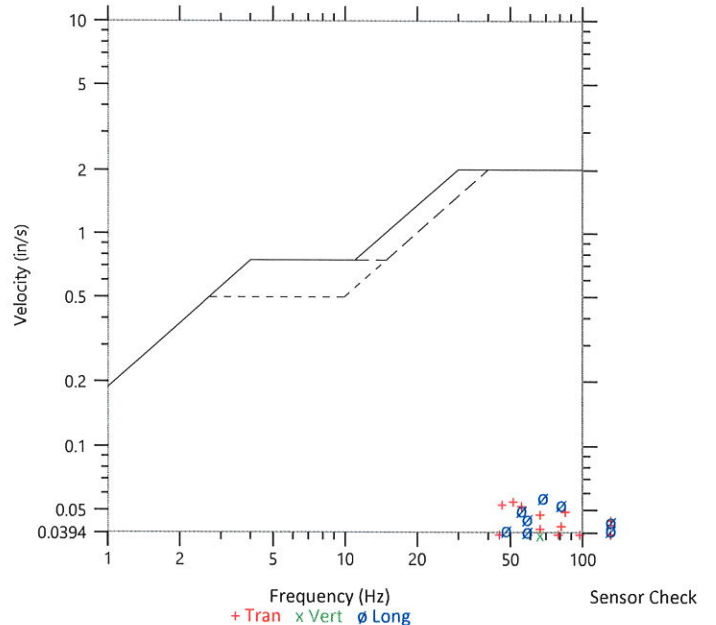
	Tran	Vert	Long
Peak Particle Velocity	0.0562 in/s	0.0397 in/s	0.0583 in/s
Zero Crossing Frequency	51.2 Hz	66.1 Hz	68.3 Hz
Time (Relative to Trigger)	0.704 sec	0.562 sec	0.576 sec
Peak Acceleration	0.072 g	0.079 g	0.089 g
Peak Displacement	0.000 in	0.000 in	0.000 in
Sensor Check	✓ Passed	✓ Passed	✓ Passed
Frequency	7.3 Hz	7.3 Hz	7.3 Hz
Overswing Ratio	3.4	3.5	4.5

Peak Vector Sum 0.0732 in/s at 0.576 sec

**ISEE Linear Microphone**

Peak Sound Pressure Level 0.000511 psi  
 Peak Sound Pressure Level 104.9 dB(L)  
 Time (Relative to Trigger) 2.152 sec  
 Zero Crossing Frequency 8.3 Hz  
 Sensor Check ✓ Passed  
 Frequency 19.7 Hz  
 Test Amplitude 1260 mv

USBM R18507 And OSMRE  
 Velocity versus Frequency (Zero Crossing)





**Waveform Trigger Source**  
**Trigger Level(s)**  
**Trigger Level (Mic)**  
**Pre-Trigger/Record Time**  
**Sample Rate**  
**Setup File Name**  
**Operator**

Long at June 21, 2022 14:58:24  
 Geo 0.0200 in/s  
 Mic 0.01029 psi, 131 dB(L)  
 0.50 sec/8.0 sec (Fixed)  
 4096 sps  
 Spicewood Hwy 71 - Station 5.mmb  
 Operator

**Serial Number**  
**Model Number**  
**Battery Level**  
**Unit Calibration**  
**Event File Name**  
**USB Sensor Support**

UM13415  
 Micromate ISEE 10.90FB  
 3.8 volts  
 September 16, 2021 by InstanTel  
 UM13415\_20220621145824.IDFW  
 Disabled

**Notes**

Location Station 5  
 Client Spicewood Crushed Stone  
 Company Hwy 71 Quarry  
 General Notes IGS, Inc.

**Extended Note** N30.49911 W98.21538

**Post Event Notes** No text to be displayed.

**Geophone**

Peak Particle Velocity  
 Zero Crossing Frequency  
 Time (Relative to Trigger)  
 Peak Acceleration  
 Peak Displacement  
 Sensor Check  
 Frequency  
 Overswing Ratio

Tran	Vert	Long
0.0583 in/s	0.0372 in/s	0.0574 in/s
68.3 Hz	85.3 Hz	>100 Hz
0.737 sec	0.710 sec	1.113 sec
0.112 g	0.059 g	0.105 g
0.000 in	0.000 in	0.000 in
✓ Passed	✓ Passed	✓ Passed
7.5 Hz	7.5 Hz	7.3 Hz
4.0	4.5	4.8

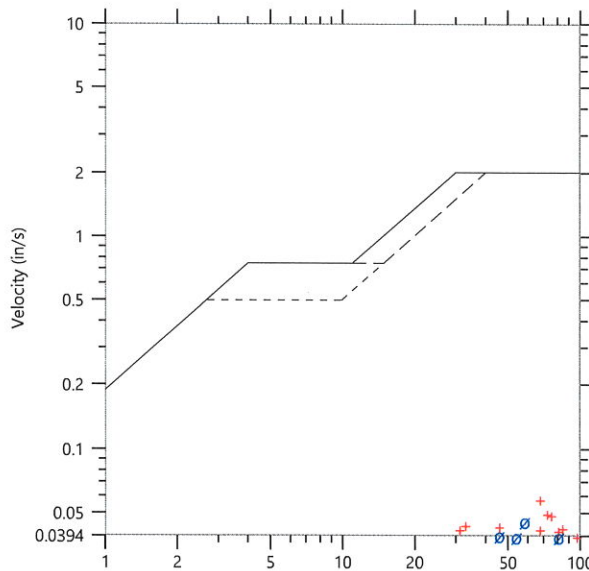
Peak Vector Sum 0.0615 in/s at 1.113 sec

**ISEE Linear Microphone**

Peak Sound Pressure Level  
 Peak Sound Pressure Level  
 Time (Relative to Trigger)  
 Zero Crossing Frequency  
 Sensor Check  
 Frequency  
 Test Amplitude

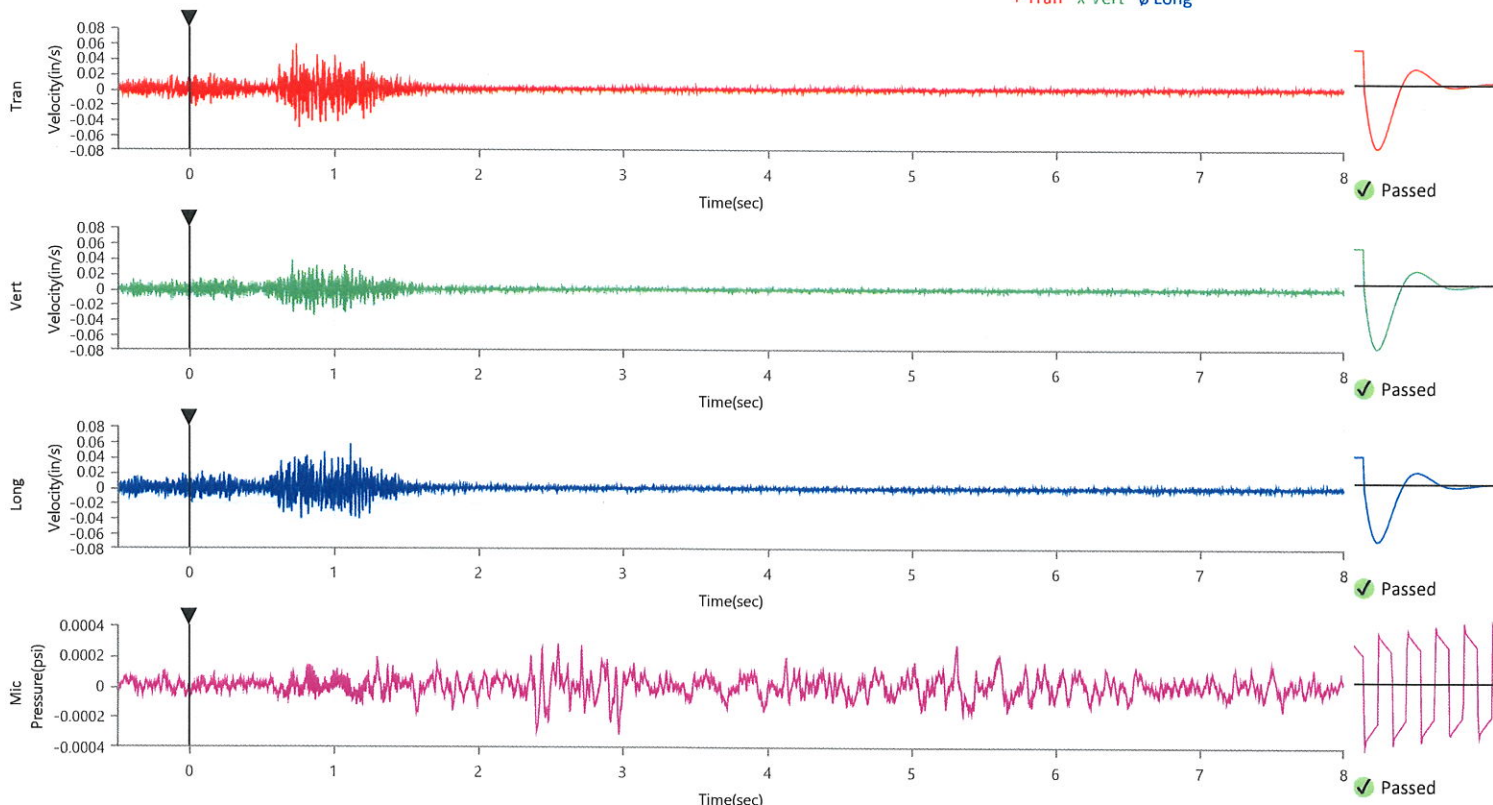
0.000315 psi  
 100.7 dB(L)  
 2.971 sec  
 13.0 Hz  
 ✓ Passed  
 19.7 Hz  
 1215 mv

**USBM RI8507 And OSMRE**  
 Velocity versus Frequency (Zero Crossing)



Frequency (Hz)  
 + Tran x Vert o Long

Sensor Check





**Waveform Trigger Source**  
**Trigger Level(s)**  
**Trigger Level (Mic)**  
**Pre-Trigger/Record Time**  
**Sample Rate**  
**Setup File Name**  
**Operator**

Vert at June 21, 2022 14:58:23  
 Geo 0.0200 in/s  
 Mic 0.01029 psi, 131 dB(L)  
 0.50 sec/8.0 sec (Fixed)  
 4096 sps  
 Spicewood Hwy 71 - Station 6.mmb  
 Operator

**Serial Number**  
**Model Number**  
**Battery Level**  
**Unit Calibration**  
**Event File Name**  
**USB Sensor Support**

UM7453  
 Micromate ISEE 10.90FB  
 3.8 volts  
 September 16, 2021 by Instantel  
 UM7453\_20220621145823.IDFW  
 Disabled

**Notes**

Location Station 6  
 Client Spicewood Crushed Stone  
 Company Hwy 71 Quarry  
 General Notes IGS, Inc.

**Extended Note** N30.495113 W98.206539

**Post Event Notes** No text to be displayed.

**Geophone**

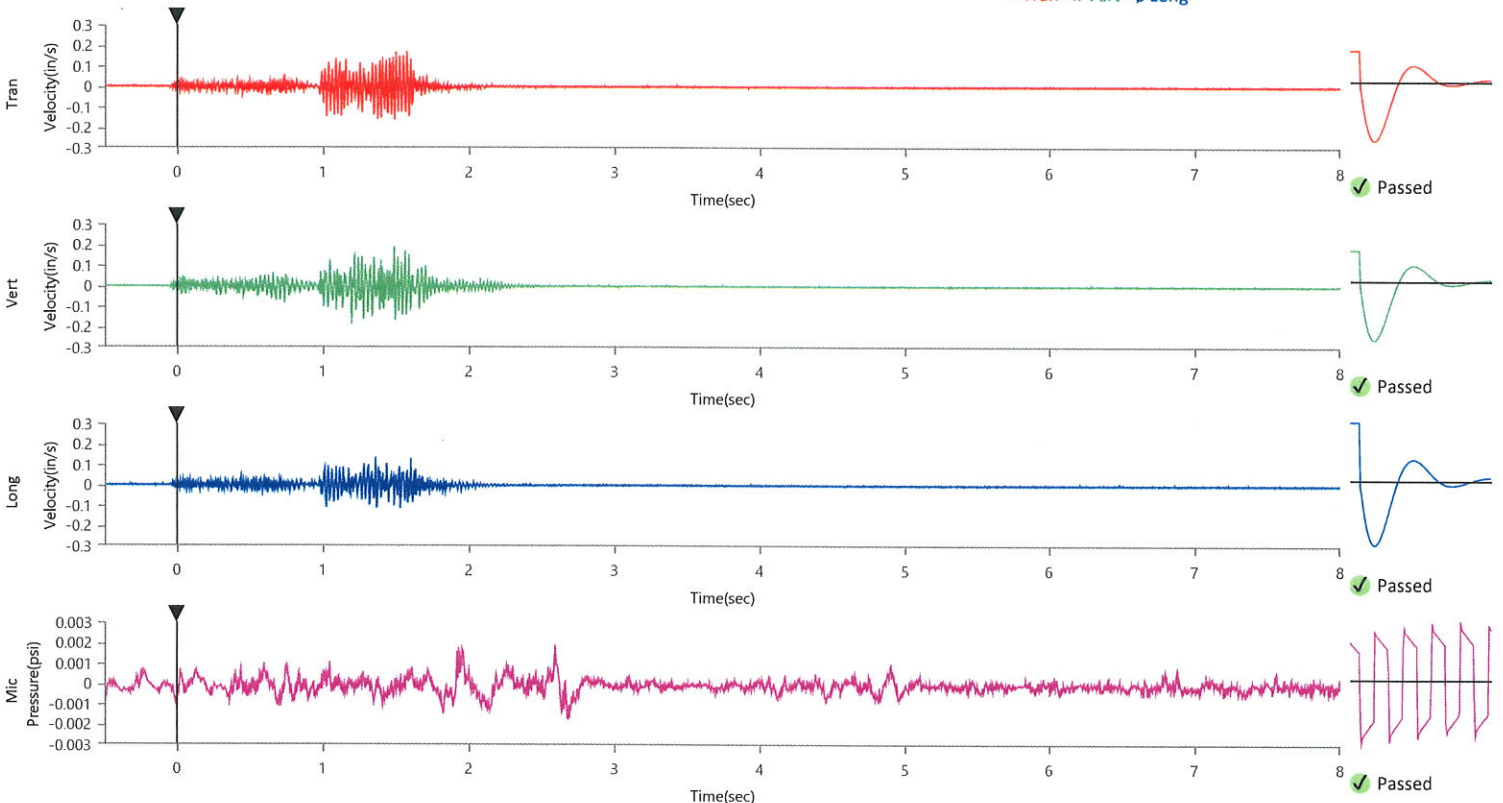
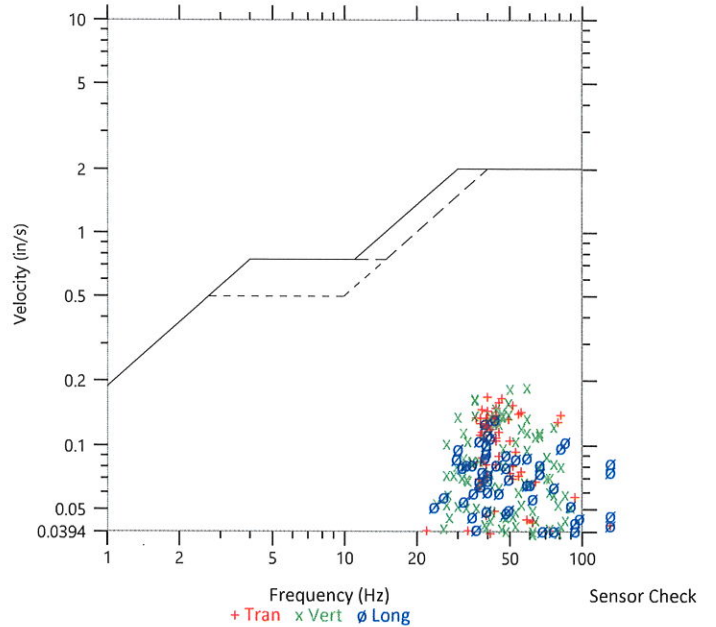
	Tran	Vert	Long
Peak Particle Velocity	0.1728 in/s	0.1933 in/s	0.1365 in/s
Zero Crossing Frequency	40.2 Hz	58.5 Hz	42.7 Hz
Time (Relative to Trigger)	1.574 sec	1.487 sec	1.361 sec
Peak Acceleration	0.227 g	0.230 g	0.181 g
Peak Displacement	0.001 in	0.001 in	0.000 in
Sensor Check	✓ Passed	✓ Passed	✓ Passed
Frequency	7.5 Hz	7.5 Hz	7.5 Hz
Overswing Ratio	3.5	3.5	2.9

Peak Vector Sum 0.2259 in/s at 1.488 sec

**ISEE Linear Microphone**

Peak Sound Pressure Level 0.001881 psi  
 Peak Sound Pressure Level 116.2 dB(L)  
 Time (Relative to Trigger) 2.594 sec  
 Zero Crossing Frequency 5.3 Hz  
 Sensor Check ✓ Passed  
 Frequency 19.7 Hz  
 Test Amplitude 1256 mv

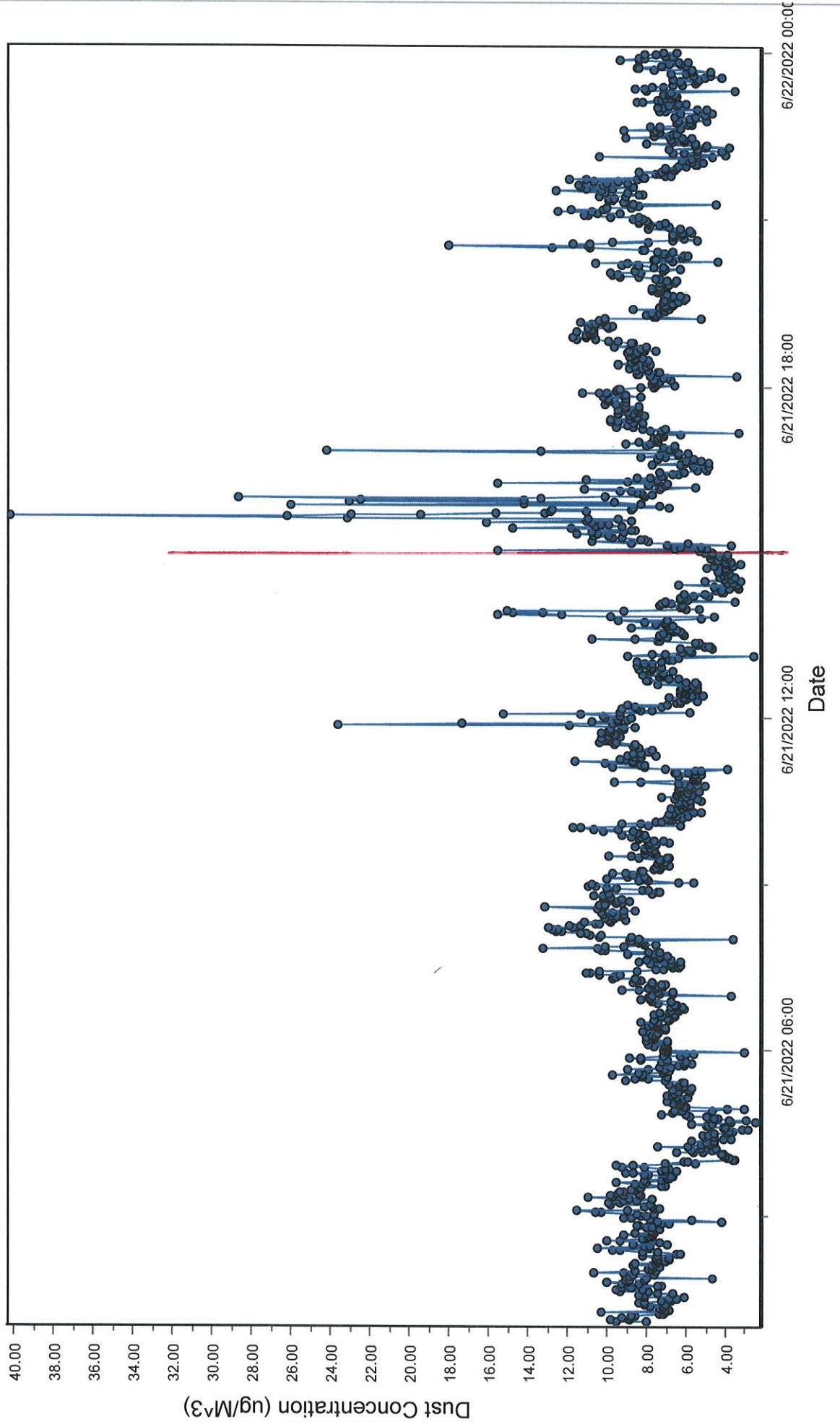
**USBM RI8507 And OSMRE**  
 Velocity versus Frequency (Zero Crossing)



# Spicewood Crushed Stone - Hwy 71 Quarry

## North Dust Monitor

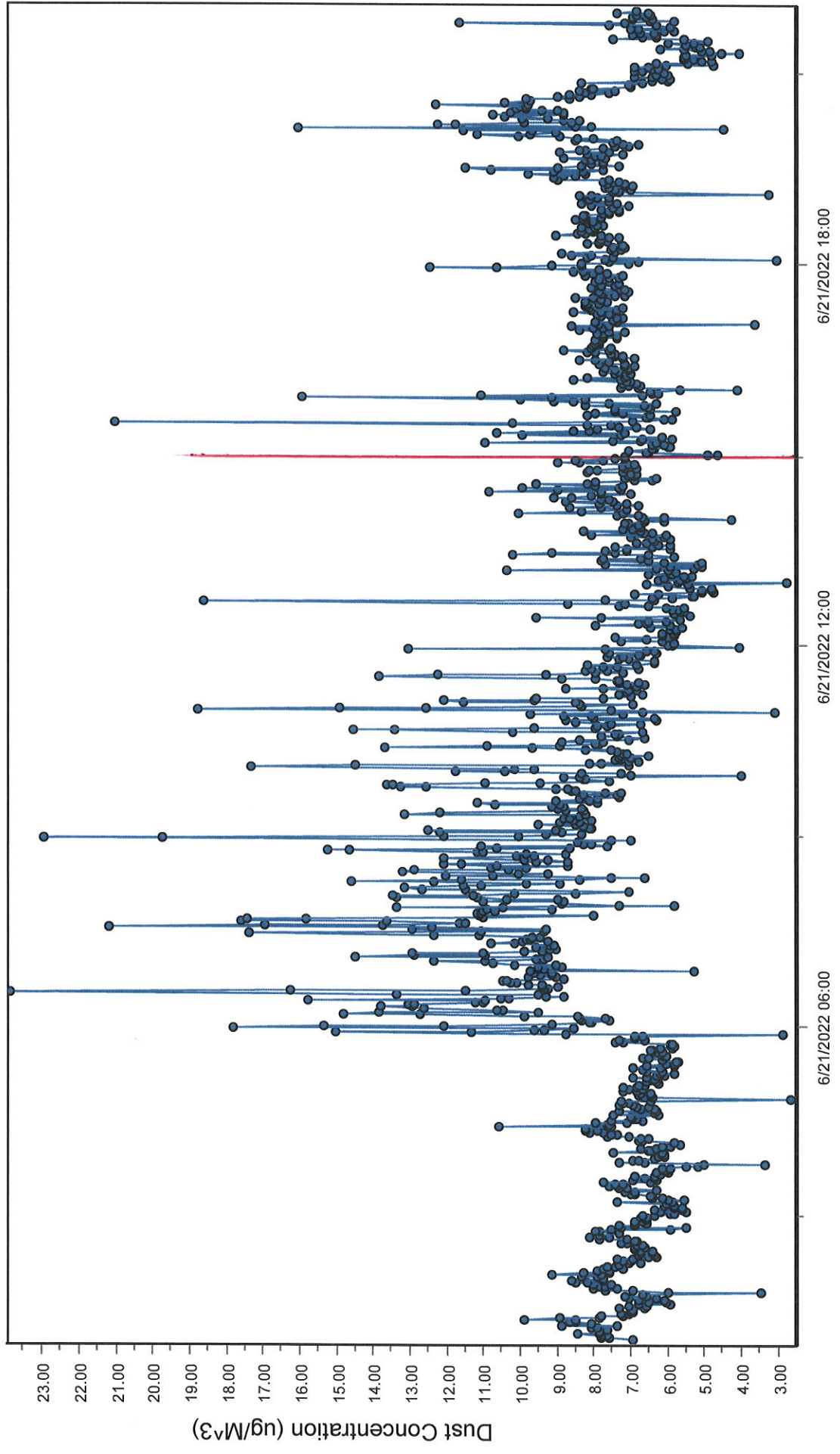
● D100@AvgPartL



# Spicewood Crushed Stone - Hwy 71 Quarry

## South Dust Monitor

● D100@AvgPartL



6/21/2022 18:00

6/21/2022 12:00

6/21/2022 06:00

Date



Creekside Trail

Spicewood Hwy 71 - Station 5

The Carver Group

Spicewood Hwy 71 - Station 4

Spicewood Hwy 71 - Station 3

Spicewood Hwy 71 - Station 2

Spicewood Hwy 71 - Station 1

Spicewood Hwy 71 - Station 6

10-22

Spicewood Hwy 71 - South Dust

Spicewood Hwy 71 - Noise 3

71

Google Earth

Mountain Laurel Ln

Oak Park Dr

Terrata Homes LLC

Lasta View Trail

