

Date/Time	Unit	Unit Location	Blast		Distance	PPV	Geo ZCF	Sound Level Microphone			
			Blast Number	Blast Location				PSPL	Peak	Time of Peak	Leq
06/24/22 0:00	UM13917	Noise 2	11-22	Level 1	2153.8 ft	-	-	-	50.5 dB(A)	23:13:05	31.2 dB
06/24/22 0:00	UM13416	Noise 3	11-22	Level 1	1949.5 ft	-	-	-	68.9 dB(A)	16:25:05	47.9 dB
06/24/22 10:51	UM8046	Station 1	11-22	Level 1	1803.8 ft	0.2138 in/s	70.6 Hz	108.2 dB(L)	-	-	-
06/24/22 10:51	UM9068	Station 2	11-22	Level 1	1825.8 ft	0.1117 in/s	85.3 Hz	107.6 dB(L)	-	-	-
06/24/22 10:51	UM6548	Station 3	11-22	Level 1	1910.4 ft	0.1365 in/s	68.3 Hz	106.4 dB(L)	-	-	-
06/24/22 10:51	UM7153	Station 4	11-22	Level 1	2072.2 ft	0.1521 in/s	93.1 Hz	105.0 dB(L)	-	-	-
06/24/22 10:51	UM13415	Station 5	11-22	Level 1	2156.1 ft	0.1080 in/s	70.6 Hz	98.7 dB(L)	-	-	-
06/24/22 10:51	UM7453	Station 6	11-22	Level 1	1112.8 ft	0.2042 in/s	32.0 Hz	123.7 dB(L)	-	-	-

Start June 24, 2022 00:00:05
Finish June 24, 2022 23:29:59
Number of Intervals/Interval 1409.91/60 sec
Sample Rate 4096 sps
Setup File Name Spicewood Hwy 71 - Noise 2.mmb
Operator Operator

Serial Number
Model Number
Battery Level
Unit Calibration
Microphone Calibration
Event File Name
USB Sensor Support

UM13917
 Micromate ISEE 10.90GC
 3.8 volts
 November 23, 2021 by Instantel
 UA10858, May 9, 2022 by Instantel
 UM13917_20220624000005.IDFH
 Disabled

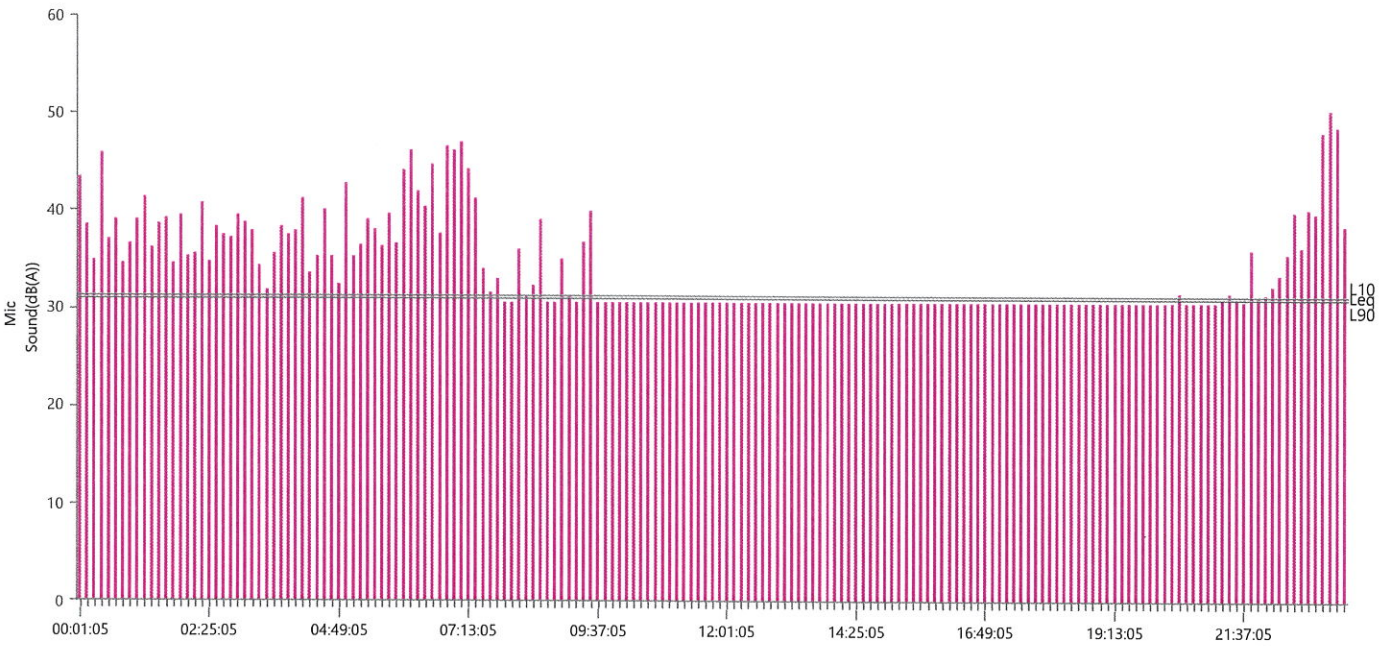
Notes
Location Noise 2
Client Spicewood Crushed Stone
Company Hwy 71 Quarry
General Notes IGS, Inc.

Extended Note Station 5N30.49911 W98.21538

Post Event Notes No text to be displayed.

Sound Level Microphone
 LMax 50.5 dB(A)
 Date Jun 24, 2022
 Time 23:13:05
Sound(dB(A))
 Sensor Check Passed
 Test Amplitude 1000 mv

A-Weight Slow
 50.5 dB(A)
 Jun 24, 2022
 23:13:05
LMin L10 L90 Leq
 30.4 31 31 31.2
 Passed
 1000 mv



Sensor Check



Passed

Start June 24, 2022 00:00:05
Finish June 24, 2022 23:29:59
Number of Intervals/Interval 1409.91/60 sec
Sample Rate 4096 sps
Setup File Name Spicewood Hwy 71 - Noise 3.mmb
Operator Operator

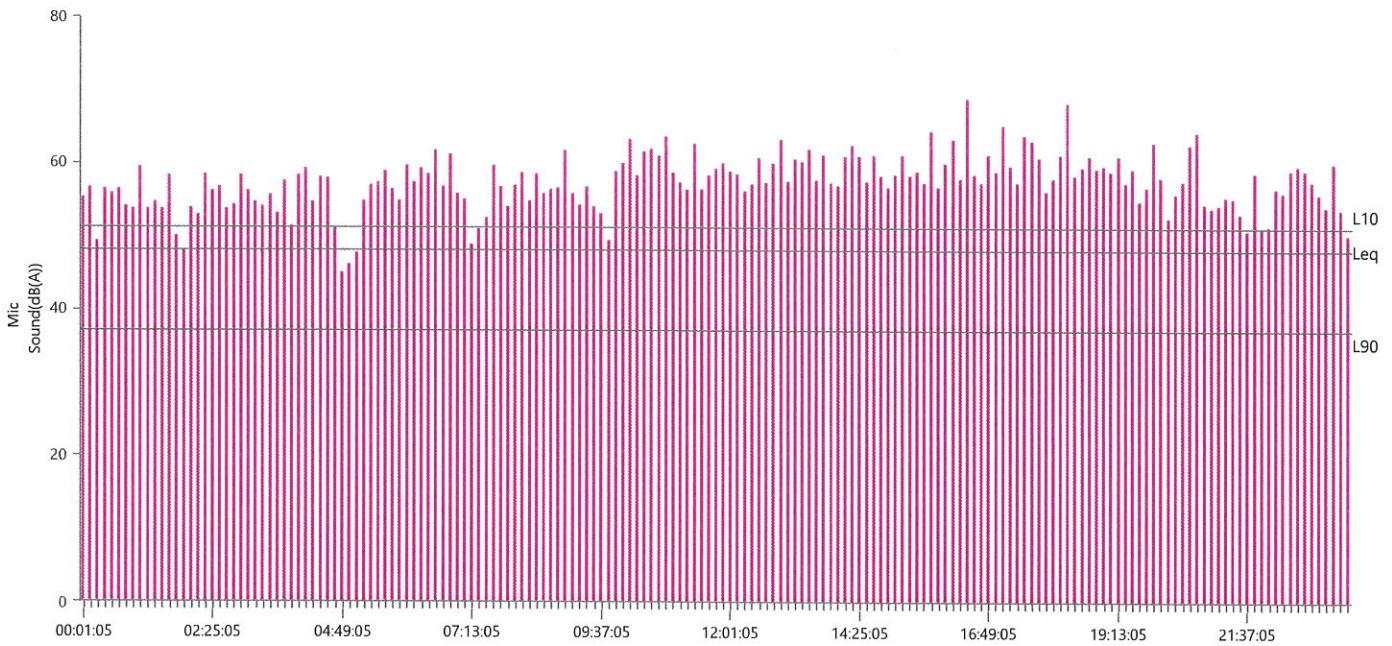
Serial Number UM13416
Model Number Micromate ISEE 10.90GC
Battery Level 3.8 volts
Unit Calibration August 24, 2021 by InstanTel
Microphone Calibration UA10983, November 8, 2021 by InstanTel
Event File Name UM13416_20220624000005.IDFH
USB Sensor Support Disabled

Notes
Location Noise 3
Client Spicewood Crushed Stone
Company Hwy 71 Quarry
General Notes IGS, Inc.

Extended Note N30.490958 W98.213495
Post Event Notes No text to be displayed.

Sound Level Microphone
LMax 68.9 dB(A)
Date Jun 24, 2022
Time 16:25:05
Sound(dB(A))
Sensor Check Passed
Test Amplitude 1045 mv

A-Weight Slow	LMin	L10	L90	Leq
68.9 dB(A)	32.0	51	37	47.9



Sensor Check



Passed

Waveform Trigger Source
Trigger Level(s)
Trigger Level (Mic)
Pre-Trigger/Record Time
Sample Rate
Setup File Name
Operator

Long at June 24, 2022 10:51:03
 Geo 0.0200 in/s
 Mic 0.01029 psi, 131 dB(L)
 0.50 sec/8.0 sec (Fixed)
 4096 sps
 Spicewood Hwy 71 - Station 1.mmb
 Operator

Serial Number
Model Number
Battery Level
Unit Calibration
Event File Name
USB Sensor Support

UM8046
 Micromate ISEE 10.90GC
 3.8 volts
 May 6, 2022 by InstanTel
 UM8046_20220624105103.IDFW
 Disabled

Notes

Location Station 1
 Client Spicewood Crushed Stone
 Company Hwy 71 Quarry
 General Notes IGS, Inc.

Extended Note N30.49572 W98.21577

Post Event Notes No text to be displayed.

Geophone

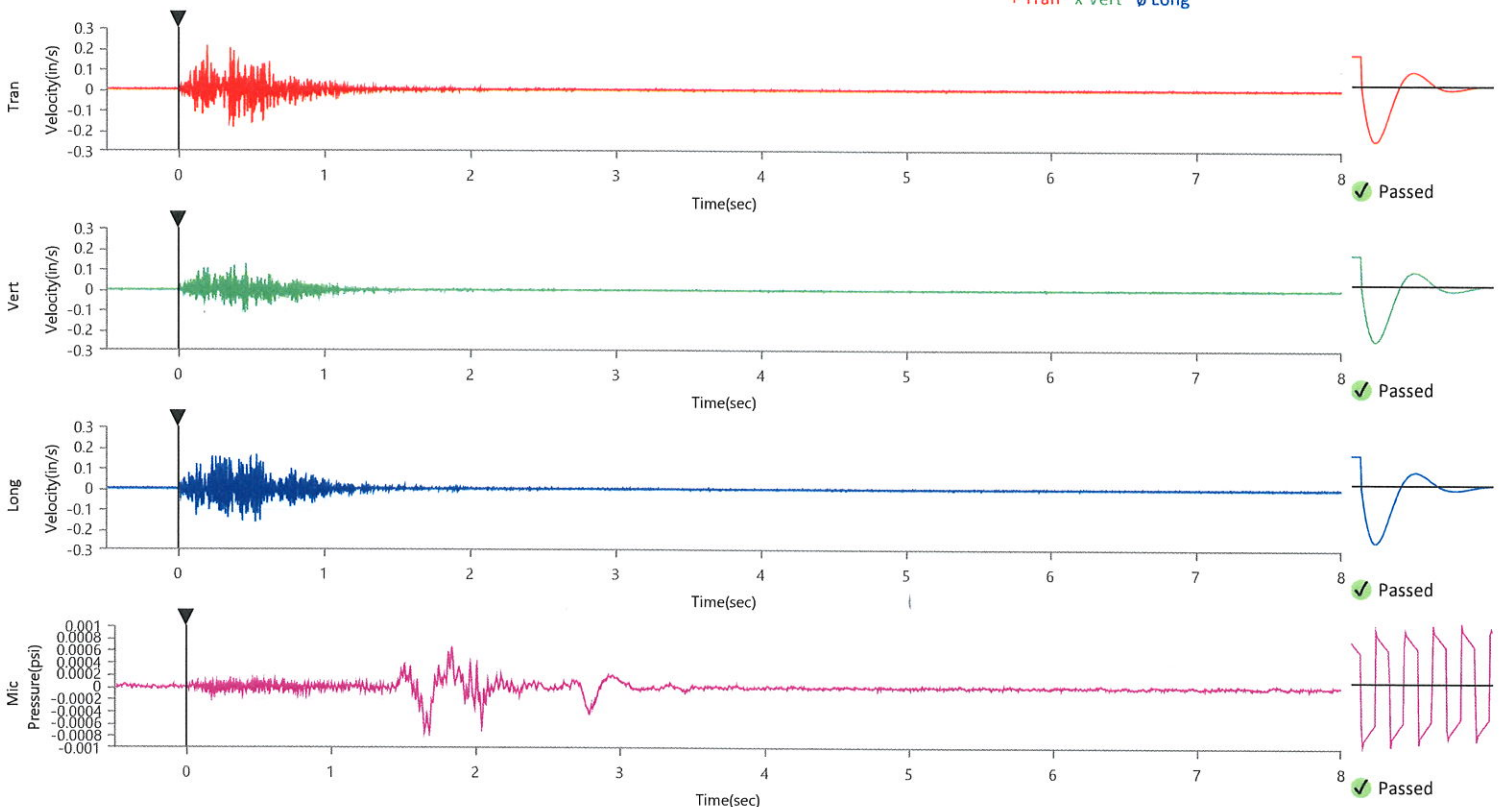
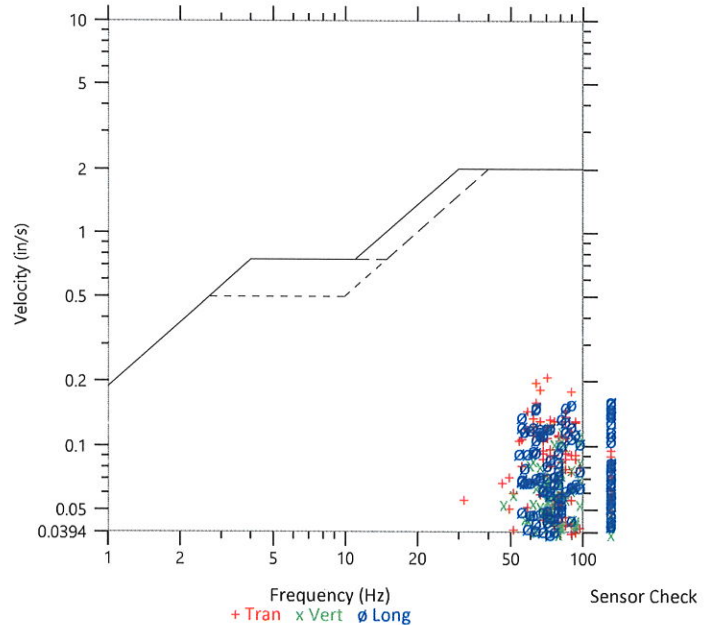
	Tran	Vert	Long
Peak Particle Velocity	0.2138 in/s	0.1251 in/s	0.1648 in/s
Zero Crossing Frequency	70.6 Hz	73.1 Hz	>100 Hz
Time (Relative to Trigger)	0.194 sec	0.461 sec	0.537 sec
Peak Acceleration	0.293 g	0.211 g	0.342 g
Peak Displacement	0.000 in	0.000 in	0.000 in
Sensor Check	✓ Passed	✓ Passed	✓ Passed
Frequency	7.5 Hz	7.3 Hz	7.1 Hz
Overswing Ratio	4.1	3.9	4.4

Peak Vector Sum 0.2162 in/s at 0.351 sec

ISEE Linear Microphone

Peak Sound Pressure Level 0.000745 psi
 Peak Sound Pressure Level 108.2 dB(L)
 Time (Relative to Trigger) 1.681 sec
 Zero Crossing Frequency 4.5 Hz
 Sensor Check ✓ Passed
 Frequency 19.7 Hz
 Test Amplitude 1253 mv

USBM R18507 And OSMRE
 Velocity versus Frequency (Zero Crossing)



Waveform Trigger Source
 Trigger Level(s)
 Trigger Level (Mic)
 Pre-Trigger/Record Time
 Sample Rate
 Setup File Name
 Operator

Tran at June 24, 2022 10:51:03
 Geo 0.0200 in/s
 Mic 0.01029 psi, 131 dB(L)
 0.50 sec/8.0 sec (Fixed)
 4096 sps
 Spicewood Hwy 71 - Station 2.mmb
 Operator

Serial Number
 Model Number
 Battery Level
 Unit Calibration
 Event File Name
 USB Sensor Support

UM9068
 Micromate ISEE 10.90FB
 3.8 volts
 December 2, 2021 by Instantel
 UM9068_20220624105103.IDFW
 Disabled

Notes

Location Station 2
 Client Spicewood Crushed Stone
 Company Hwy 71
 General Notes IGS, Inc

Extended Note N30.49650 W21572

Post Event Notes No text to be displayed.

Geophone

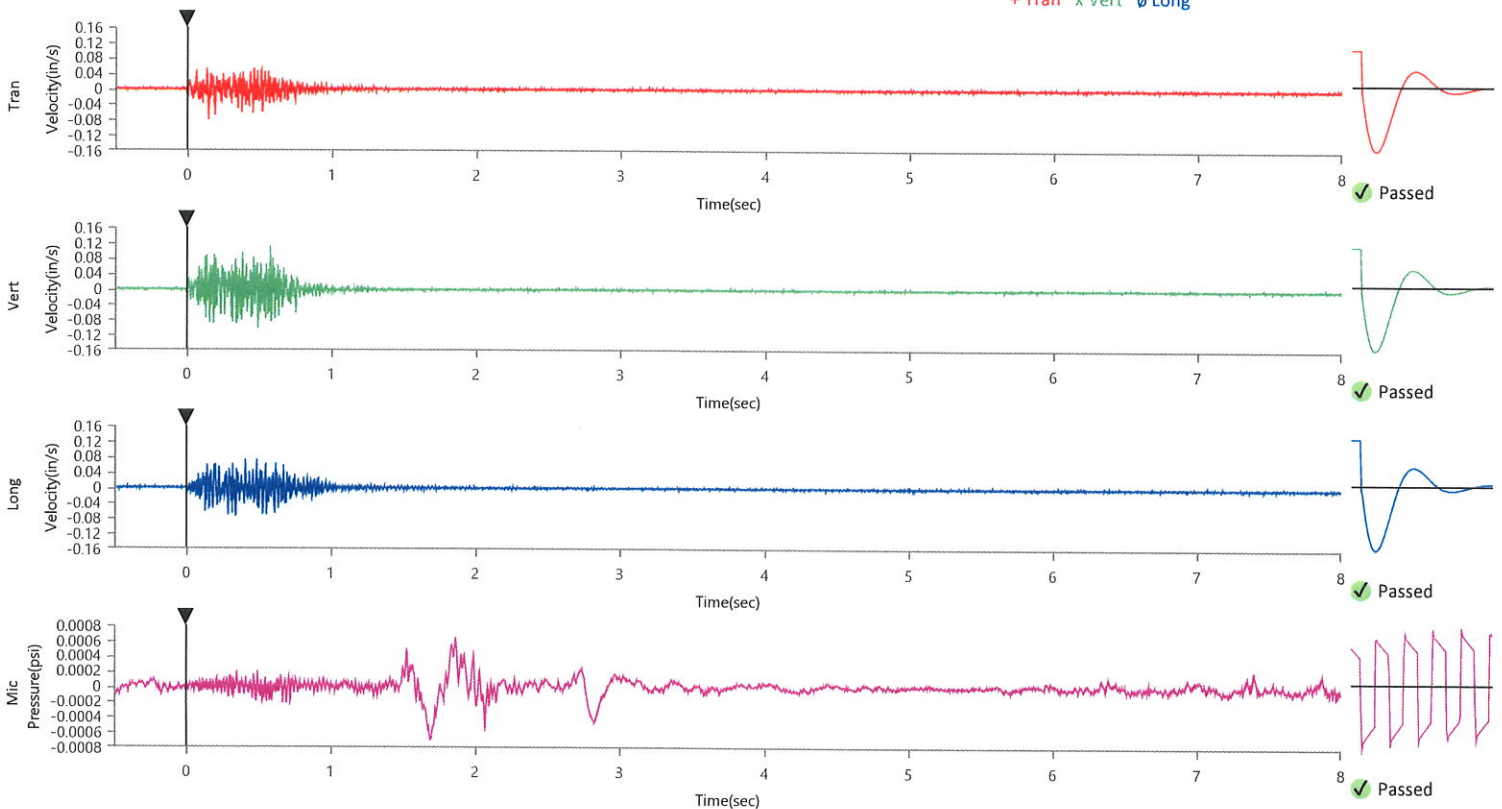
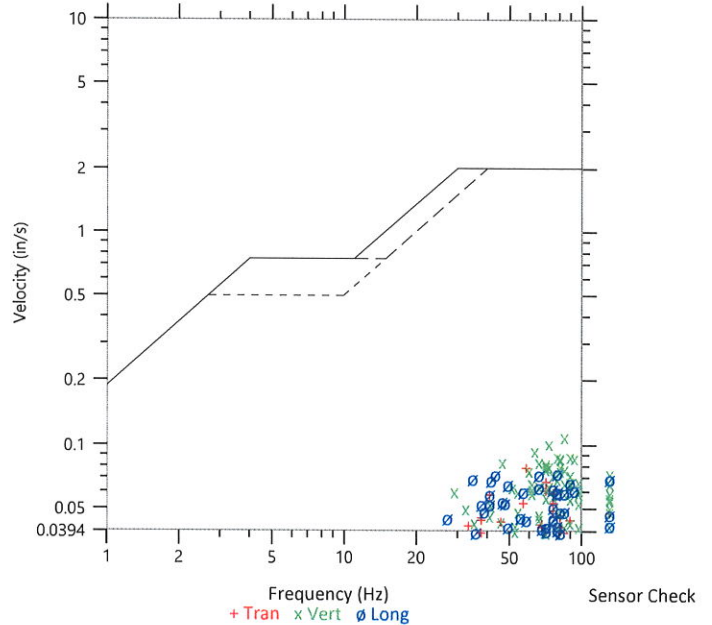
	Tran	Vert	Long
Peak Particle Velocity	0.0794 in/s	0.1117 in/s	0.0748 in/s
Zero Crossing Frequency	58.5 Hz	85.3 Hz	78.8 Hz
Time (Relative to Trigger)	0.146 sec	0.577 sec	0.342 sec
Peak Acceleration	0.138 g	0.174 g	0.142 g
Peak Displacement	0.000 in	0.000 in	0.000 in
Sensor Check	✓ Passed	✓ Passed	✓ Passed
Frequency	7.3 Hz	7.5 Hz	7.5 Hz
Overswing Ratio	3.9	3.6	3.4

Peak Vector Sum 0.1173 in/s at 0.342 sec

ISEE Linear Microphone

Peak Sound Pressure Level 0.000695 psi
 Peak Sound Pressure Level 107.6 dB(L)
 Time (Relative to Trigger) 1.686 sec
 Zero Crossing Frequency 3.5 Hz
 Sensor Check ✓ Passed
 Frequency 19.7 Hz
 Test Amplitude 1240 mv

USBM R18507 And OSMRE
 Velocity versus Frequency (Zero Crossing)



Waveform Trigger Source
Trigger Level(s)
Trigger Level (Mic)
Pre-Trigger/Record Time
Sample Rate
Setup File Name
Operator

Long at June 24, 2022 10:51:02
 Geo 0.0200 in/s
 Mic 0.01029 psi, 131 dB(L)
 0.50 sec/8.0 sec (Fixed)
 4096 sps
 Spicewood Hwy 71 - Station 3.mmb
 Operator

Serial Number
Model Number
Battery Level
Unit Calibration
Event File Name
USB Sensor Support

UM6548
 Micromate ISEE 10.90GC
 3.8 volts
 April 19, 2022 by InstanTEL
 UM6548_20220624105102.IDFW
 Disabled

Notes

Location Station 3
 Client Spicewood Crushed Stone
 Company Hwy 71 Quarry
 General Notes IGS, Inc.

Extended Note N30.49742 W98.21566

Post Event Notes No text to be displayed.

Geophone

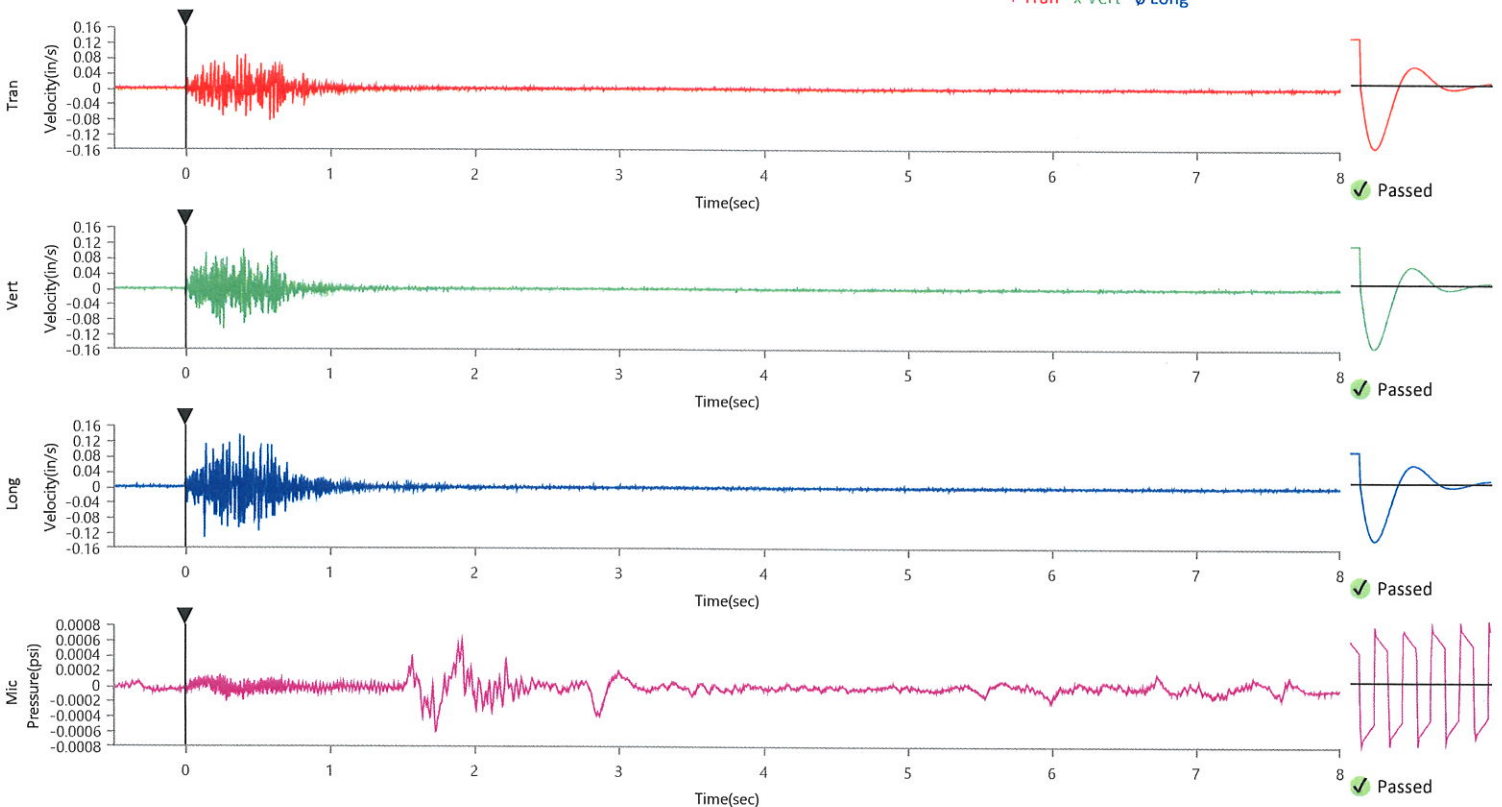
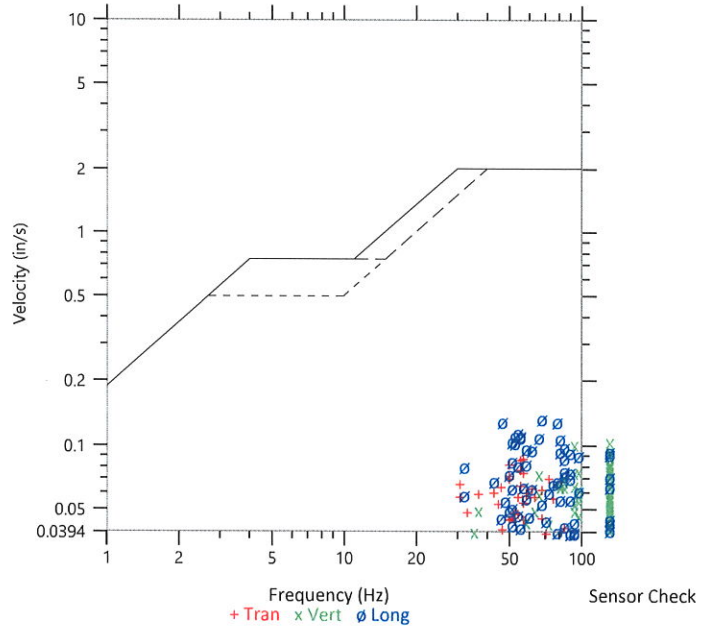
	Tran	Vert	Long
Peak Particle Velocity	0.0884 in/s	0.1055 in/s	0.1365 in/s
Zero Crossing Frequency	56.9 Hz	>100 Hz	68.3 Hz
Time (Relative to Trigger)	0.411 sec	0.262 sec	0.377 sec
Peak Acceleration	0.135 g	0.188 g	0.194 g
Peak Displacement	0.000 in	0.000 in	0.000 in
Sensor Check	✓ Passed	✓ Passed	✓ Passed
Frequency	7.3 Hz	7.5 Hz	7.5 Hz
Overswing Ratio	3.5	3.5	3.1

Peak Vector Sum 0.1448 in/s at 0.377 sec

ISEE Linear Microphone

Peak Sound Pressure Level 0.000603 psi
 Peak Sound Pressure Level 106.4 dB(L)
 Time (Relative to Trigger) 1.730 sec
 Zero Crossing Frequency 7.1 Hz
 Sensor Check ✓ Passed
 Frequency 20.5 Hz
 Test Amplitude 1283 mv

USBM R18507 And OSMRE
 Velocity versus Frequency (Zero Crossing)



Waveform Trigger Source
 Trigger Level(s)
 Trigger Level (Mic)
 Pre-Trigger/Record Time
 Sample Rate
 Setup File Name
 Operator

Long at June 24, 2022 10:51:03
 Geo 0.0200 in/s
 Mic 0.01029 psi, 131 dB(L)
 0.50 sec/8.0 sec (Fixed)
 4096 sps
 Spicewood Hwy 71 - Station 4.mmb
 Operator

Serial Number
 Model Number
 Battery Level
 Unit Calibration
 Event File Name
 USB Sensor Support

UM7153
 Micromate ISEE 10.90FB
 3.8 volts
 September 16, 2021 by InstanTEL
 UM7153_20220624105103.IDFW
 Disabled

Notes

Location Station 4
 Client Spicewood Crushed Stone
 Company Hwy 71 Quarry
 General Notes IGS, Inc.

Extended Note N30.49821 W98.21578

Post Event Notes No text to be displayed.

Geophone

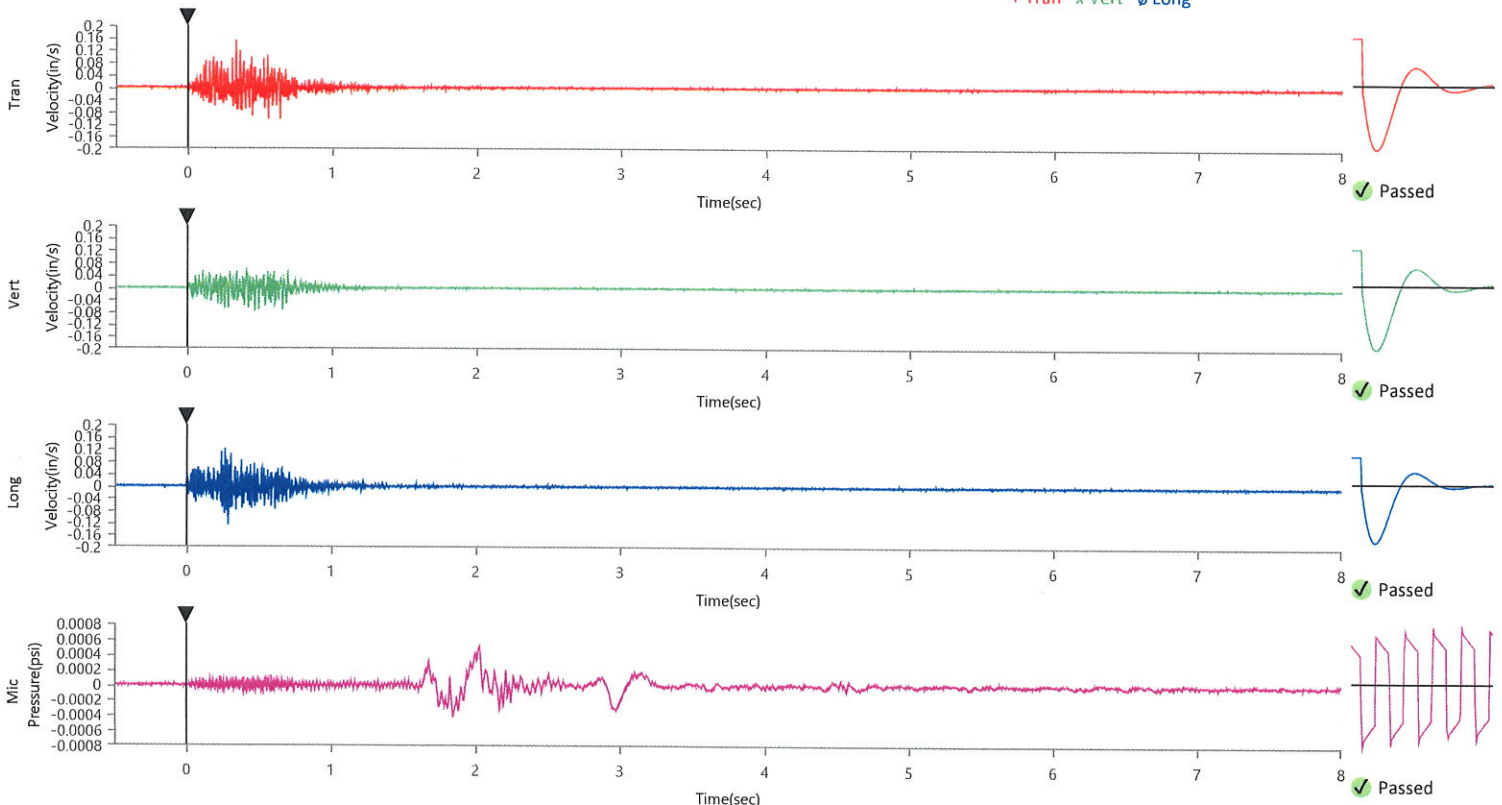
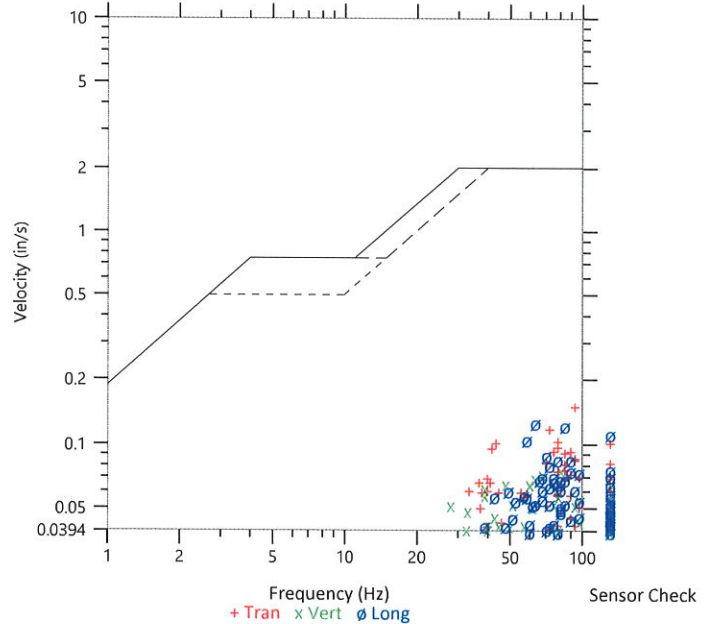
	Tran	Vert	Long
Peak Particle Velocity	0.1521 in/s	0.0770 in/s	0.1266 in/s
Zero Crossing Frequency	93.1 Hz	85.3 Hz	64.0 Hz
Time (Relative to Trigger)	0.335 sec	0.468 sec	0.286 sec
Peak Acceleration	0.204 g	0.142 g	0.188 g
Peak Displacement	0.000 in	0.000 in	0.000 in
Sensor Check	✓ Passed	✓ Passed	✓ Passed
Frequency	7.3 Hz	7.3 Hz	7.3 Hz
Overswing Ratio	3.5	3.5	4.5

Peak Vector Sum 0.1580 in/s at 0.335 sec

ISEE Linear Microphone

Peak Sound Pressure Level 0.000515 psi
 Peak Sound Pressure Level 105.0 dB(L)
 Time (Relative to Trigger) 2.025 sec
 Zero Crossing Frequency 4.3 Hz
 Sensor Check ✓ Passed
 Frequency 19.7 Hz
 Test Amplitude 1263 mv

USBM R18507 And OSMRE
 Velocity versus Frequency (Zero Crossing)



Waveform Trigger Source
 Trigger Level(s)
 Trigger Level (Mic)
 Pre-Trigger/Record Time
 Sample Rate
 Setup File Name
 Operator

Long at June 24, 2022 10:51:03
 Geo 0.0200 in/s
 Mic 0.01029 psi, 131 dB(L)
 0.50 sec/8.0 sec (Fixed)
 4096 sps
 Spicewood Hwy 71 - Station 5.mmb
 Operator

Serial Number
 Model Number
 Battery Level
 Unit Calibration
 Event File Name
 USB Sensor Support

UM13415
 Micromate ISEE 10.90FB
 3.8 volts
 September 16, 2021 by InstanTEL
 UM13415_20220624105103.IDFW
 Disabled

Notes

Location Station 5
 Client Spicewood Crushed Stone
 Company Hwy 71 Quarry
 General Notes IGS, Inc.

Extended Note N30.49911 W98.21538

Post Event Notes No text to be displayed.

Geophone

Peak Particle Velocity
 Zero Crossing Frequency
 Time (Relative to Trigger)
 Peak Acceleration
 Peak Displacement
 Sensor Check
 Frequency
 Overswing Ratio

Tran	Vert	Long
0.1067 in/s	0.1080 in/s	0.0797 in/s
97.5 Hz	70.6 Hz	68.3 Hz
0.176 sec	0.595 sec	0.548 sec
0.247 g	0.125 g	0.122 g
0.000 in	0.000 in	0.000 in
✓ Passed	✓ Passed	✓ Passed
7.5 Hz	7.5 Hz	7.3 Hz
4.0	4.5	4.8

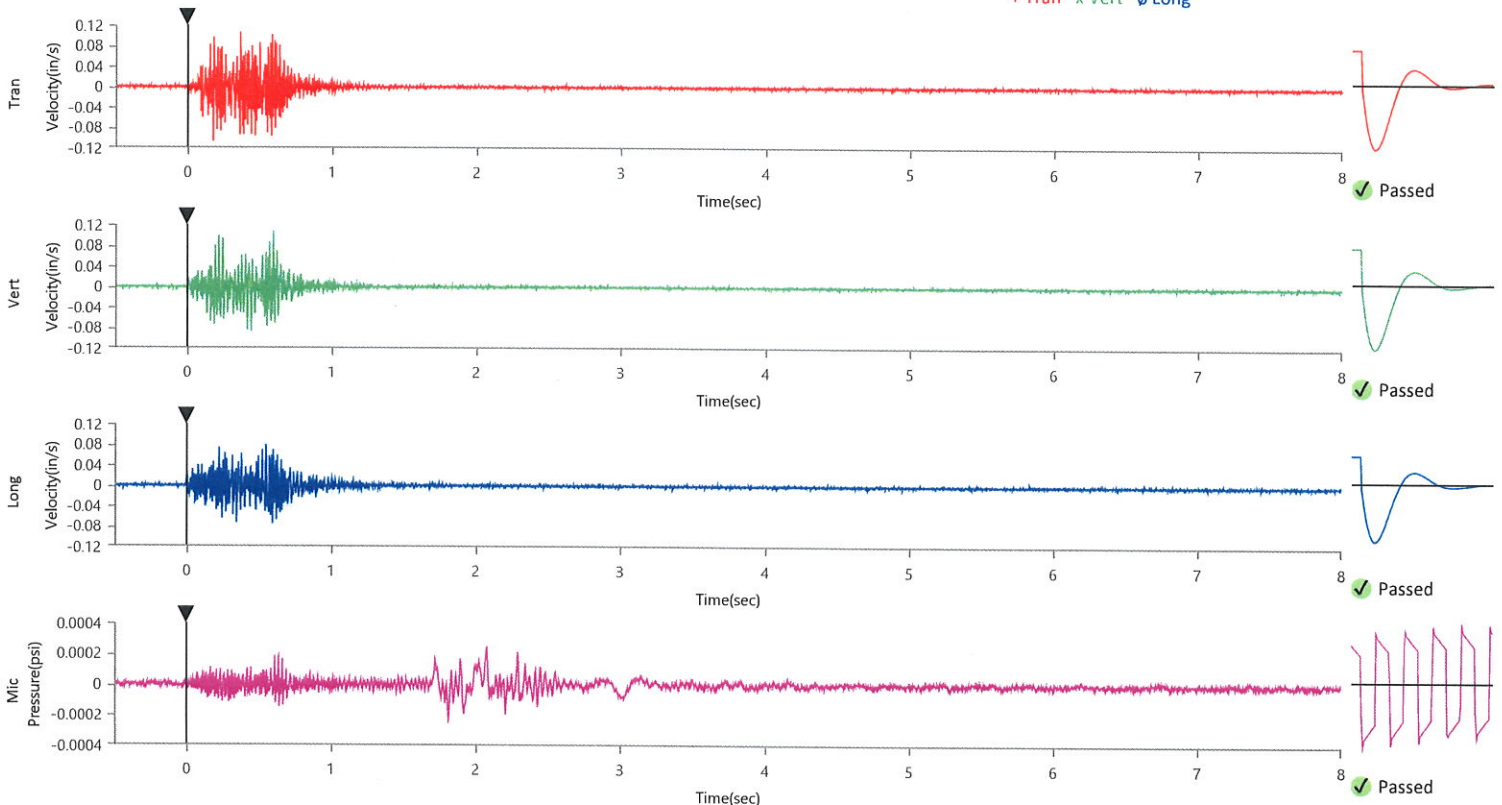
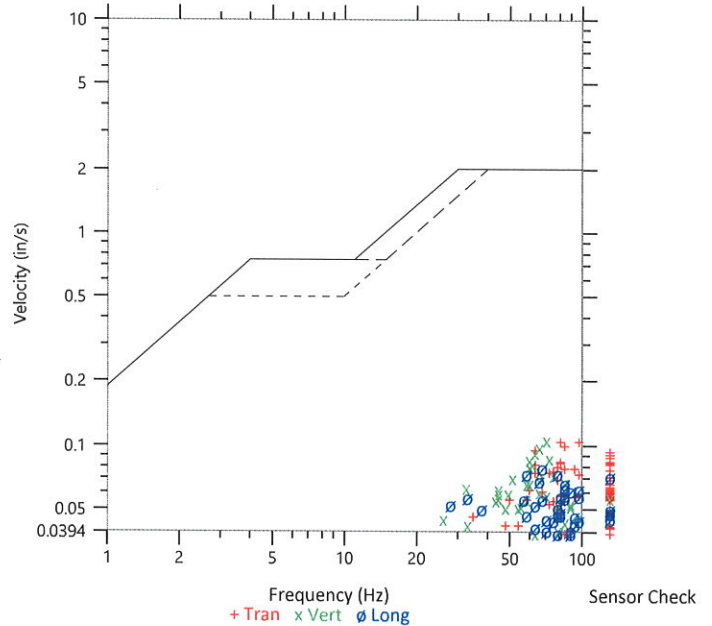
Peak Vector Sum 0.1222 in/s at 0.595 sec

ISEE Linear Microphone

Peak Sound Pressure Level
 Peak Sound Pressure Level
 Time (Relative to Trigger)
 Zero Crossing Frequency
 Sensor Check
 Frequency
 Test Amplitude

0.000250 psi
 98.7 dB(L)
 2.075 sec
 15.3 Hz
 ✓ Passed
 19.7 Hz
 1200 mv

USBM R18507 And OSMRE
 Velocity versus Frequency (Zero Crossing)



Waveform Trigger Source
Trigger Level(s)
Trigger Level (Mic)
Pre-Trigger/Record Time
Sample Rate
Setup File Name
Operator

Vert at June 24, 2022 10:51:03
 Geo 0.0200 in/s
 Mic 0.01029 psi, 131 dB(L)
 0.50 sec/8.0 sec (Fixed)
 4096 sps
 Spicewood Hwy 71 - Station 6.mmb
 Operator

Serial Number
Model Number
Battery Level
Unit Calibration
Event File Name
USB Sensor Support

UM7453
 Micromate ISEE 10.90FB
 3.8 volts
 September 16, 2021 by InstanTel
 UM7453_20220624105103.IDFW
 Disabled

Notes
 Location Station 6
 Client Spicewood Crushed Stone
 Company Hwy 71 Quarry
 General Notes IGS, Inc.

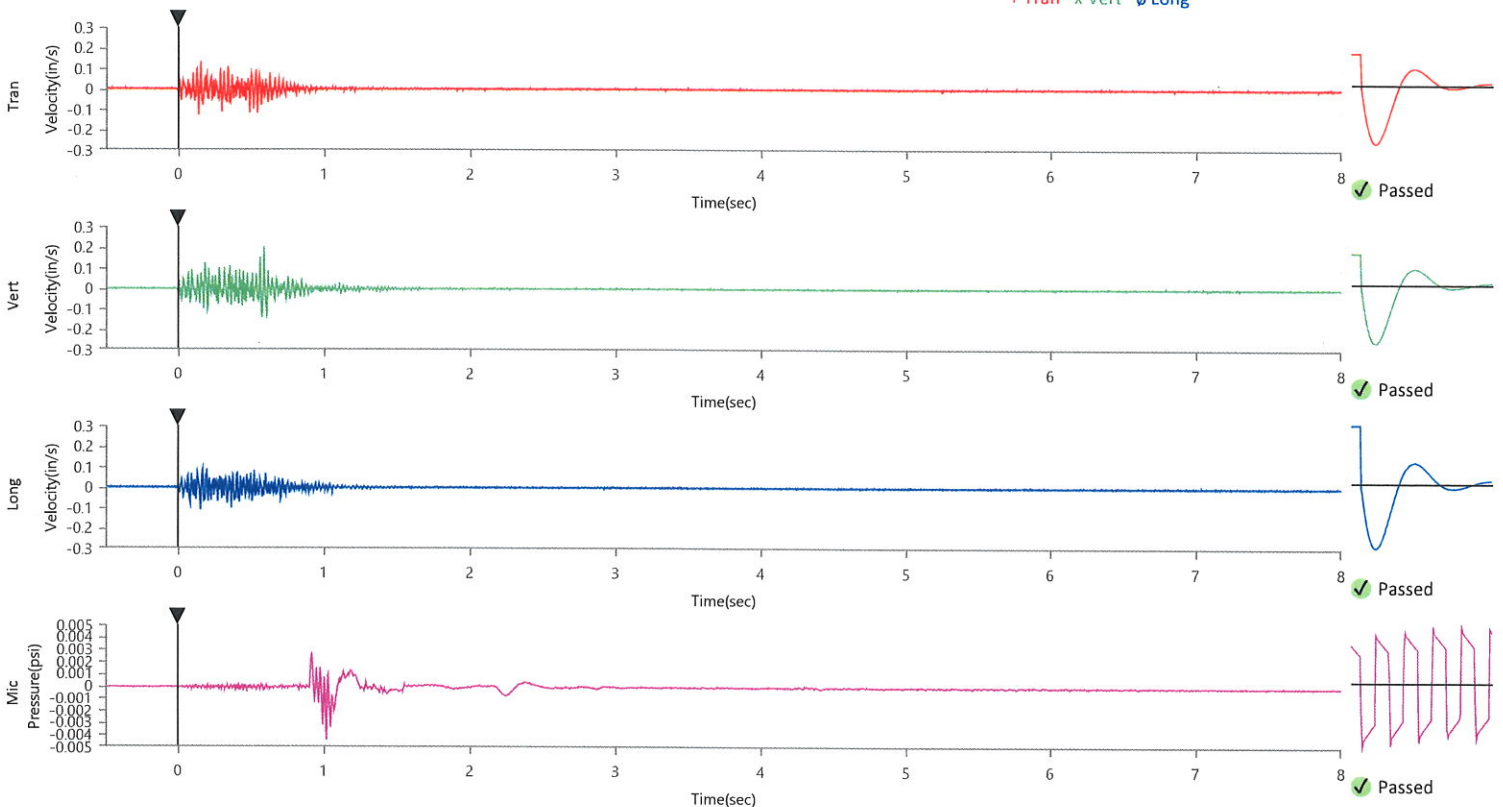
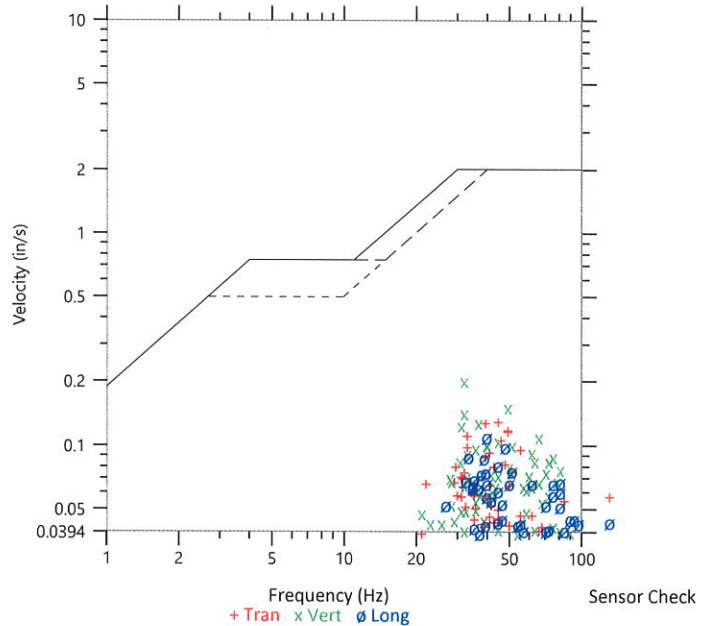
Extended Note N30.495113 W98.206539

Post Event Notes No text to be displayed.

Geophone	Tran	Vert	Long
Peak Particle Velocity	0.1319 in/s	0.2042 in/s	0.1108 in/s
Zero Crossing Frequency	44.5 Hz	32.0 Hz	40.2 Hz
Time (Relative to Trigger)	0.151 sec	0.587 sec	0.151 sec
Peak Acceleration	0.138 g	0.155 g	0.118 g
Peak Displacement	0.000 in	0.001 in	0.000 in
Sensor Check	✓ Passed	✓ Passed	✓ Passed
Frequency	7.3 Hz	7.5 Hz	7.5 Hz
Overswing Ratio	3.5	3.5	2.9
Peak Vector Sum	0.2083 in/s at 0.587 sec		

ISEE Linear Microphone
 Peak Sound Pressure Level 0.004433 psi
 Peak Sound Pressure Level 123.7 dB(L)
 Time (Relative to Trigger) 1.018 sec
 Zero Crossing Frequency 26.9 Hz
 Sensor Check ✓ Passed
 Frequency 19.7 Hz
 Test Amplitude 1268 mv

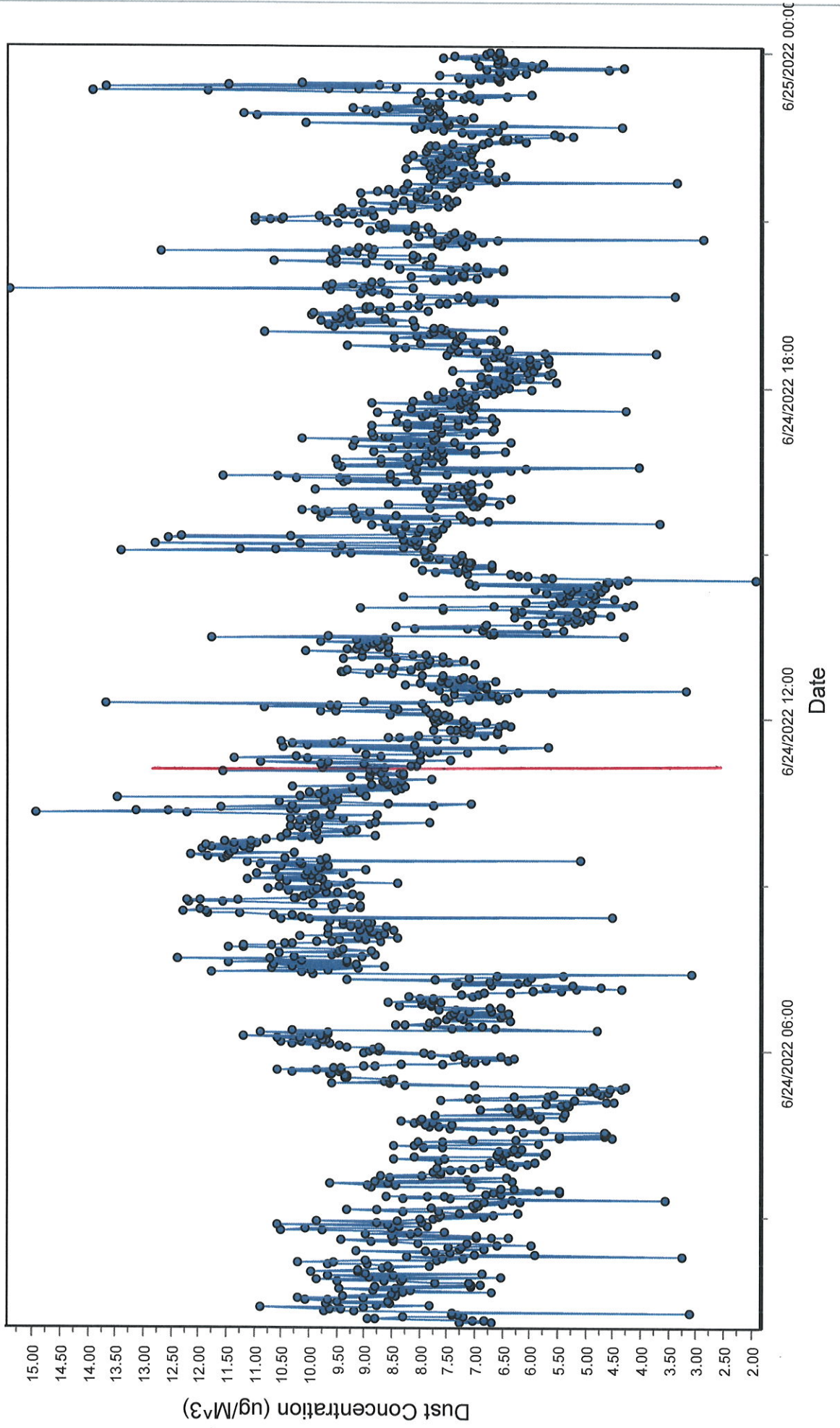
USBM R18507 And OSMRE
 Velocity versus Frequency (Zero Crossing)



Spicewood Crushed Stone - Hwy 71 Quarry

North Dust Monitor

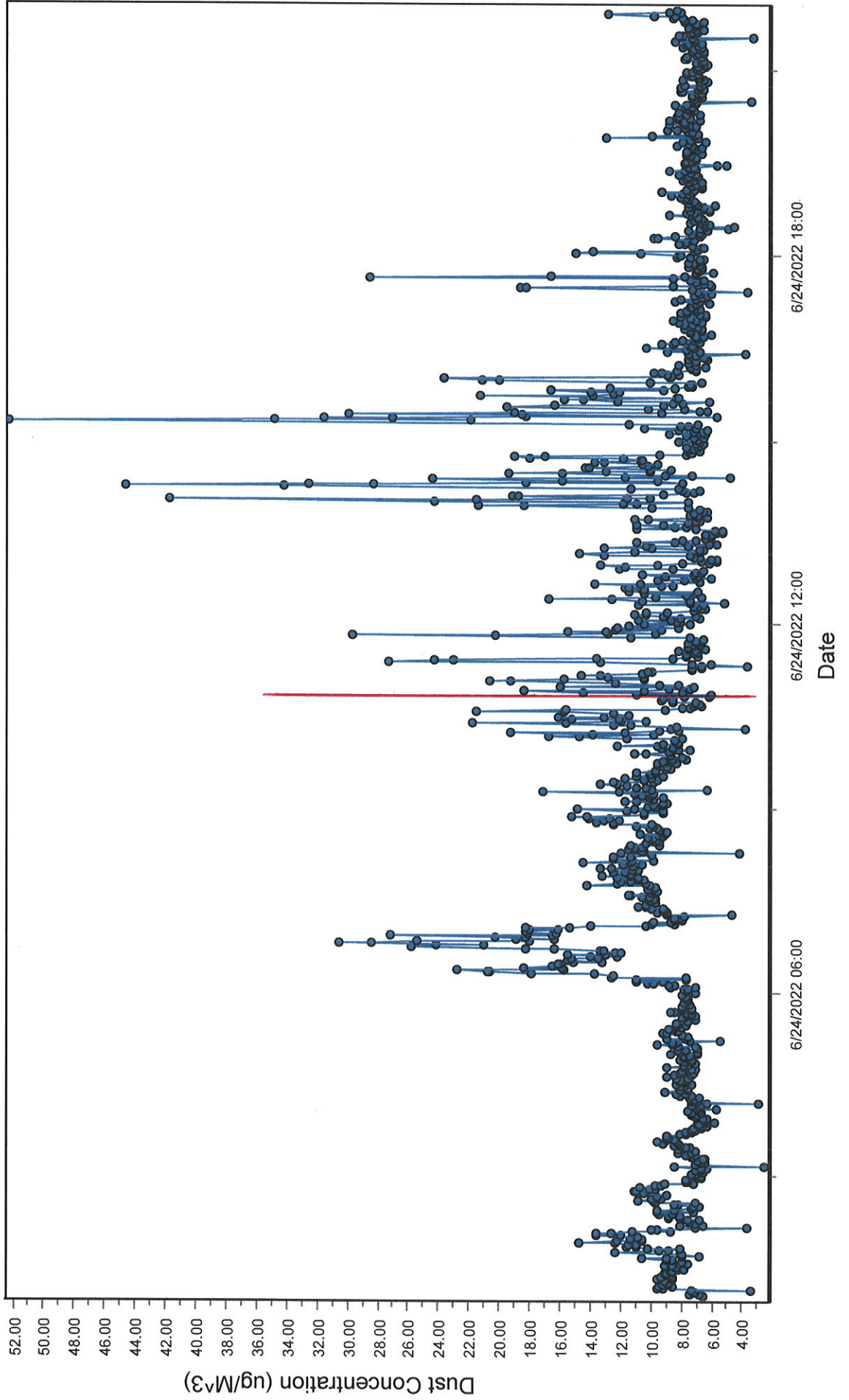
● D100@AvgPartL



Spicewood Crushed Stone - Hwy 71 Quarry

South Dust Monitor

● D100@AvgPartL



Creekside Trail

Spicewood Hwy 71 - Station 5

The Carver Group

Spicewood Hwy 71 - Station 4

Spicewood Hwy 71 - Station 3

Spicewood Hwy 71 - Station 2

Spicewood Hwy 71 - Station 1

Spicewood Hwy 71 - Station 6

Spicewood Hwy 71 - South Dust

Spicewood Hwy 71 - Noise 3

Insta View Trail

Oak Park Dr

Mountain Laurel Ln

Terrata Homes

71

Google Earth

