

Date/Time	Unit	Unit Location	Blast Number	Blast Location	Distance	PPV	Geo ZCF	PSPL	Sound Level Microphone		
									Peak	Time of Peak	Leq
09/20/22 0:00	UM13917	Noise 2	15-22	Level 1	2009.2 ft	-	-	-	66.9 dB(A)	11:19:54	43.8 dB
09/20/22 0:00	UM13907	Noise 3	15-22	Level 1	2117.8 ft	-	-	-	64.6 dB(A)	17:46:05	45.1
09/20/22 10:34	UM8046	Station 1	15-22	Level 1	1780.5 ft	0.2185 in/s	52.5 Hz	108.9 dB(L)	-	-	-
09/20/22 10:34	UM9068	Station 2	15-22	Level 1	1769.3 ft	0.2259 in/s	78.8 Hz	110.1 dB(L)	-	-	-
09/20/22 10:34	UM6503	Station 3	15-22	Level 1	1817.9 ft	0.1592 in/s	>100.0 Hz	112.1 dB(L)	-	-	-
09/20/22 10:34	UM8003	Station 4	15-22	Level 1	1955.7 ft	0.1884 in/s	75.9 Hz	111.9 dB(L)	-	-	-
09/20/22 10:34	UM7111	Station 5	15-22	Level 1	2011.8 ft	0.1564 in/s	51.2 Hz	107.0 dB(L)	-	-	-
09/20/22 10:34	UM7450	Station 6	15-22	Level 1	1173.5 ft	0.1970 in/s	60.2 Hz	125.7 dB(L)	-	-	-

Start September 20, 2022 00:00:04
Finish September 20, 2022 23:29:59
Number of Intervals/Interval 42297.75/2 sec
Sample Rate 4096 sps
Setup File Name Spicewood Hwy 71 - Noise 2.mmb
Operator Operator

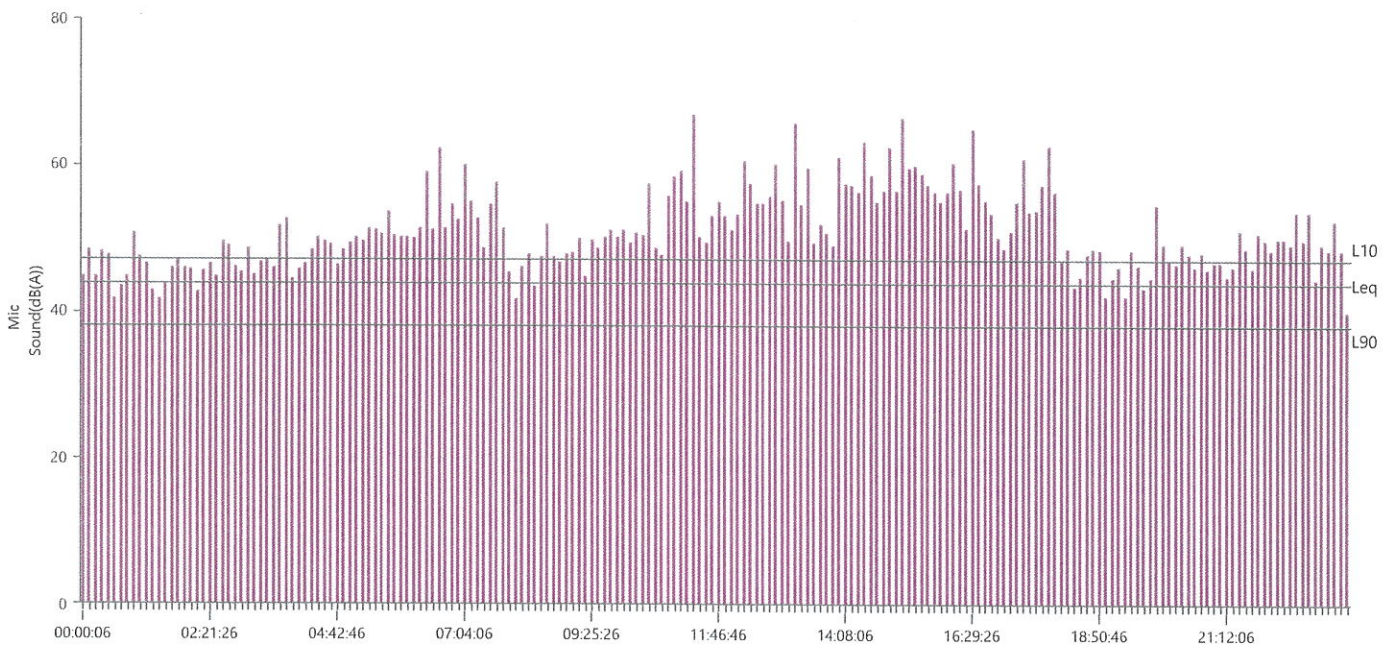
Serial Number UM13917
Model Number Micromate ISEE 10.90GC
Battery Level 3.8 volts
Unit Calibration July 19, 2022 by InstanTel
Microphone Calibration UA10038, July 19, 2022 by InstanTel
Event File Name UM13917_20220920000004.IDFH
USB Sensor Support Disabled

Notes
Location Noise 2
Client Spicewood Crushed Stone
Company Hwy 71 Quarry
General Notes IGS, Inc.

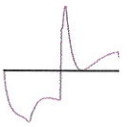
Extended Note Station 5N30.49911 W98.21538

Post Event Notes No text to be displayed.

Sound Level Microphone	A-Weight Slow			
LMax	66.9 dB(A)			
Date	Sep 20, 2022			
Time	11:19:54			
	LMin	L10	L90	Leq
Sound(dB(A))	34.6	47	38	43.8
Sensor Check	✓ Passed			
Test Amplitude	1043 mv			



Sensor Check



✓ Passed

Start September 20, 2022 00:00:05
Finish September 20, 2022 23:29:59
Number of Intervals/Interval 1409.91/60 sec
Sample Rate 4096 sps
Setup File Name Spicewood Hwy 71 - Noise 3.mmb
Operator Operator

Serial Number UM13907
Model Number Micromate ISEE 10.90GC
Battery Level 3.8 volts
Unit Calibration August 2, 2022 by InstanTel
Microphone Calibration UA10761, July 29, 2022 by InstanTel
Event File Name UM13907_20220920000005.IDFH
USB Sensor Support Disabled

Notes
Location Noise 3
Client Spicewood Crushed Stone
Company Hwy 71 Quarry
General Notes IGS, Inc.

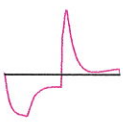
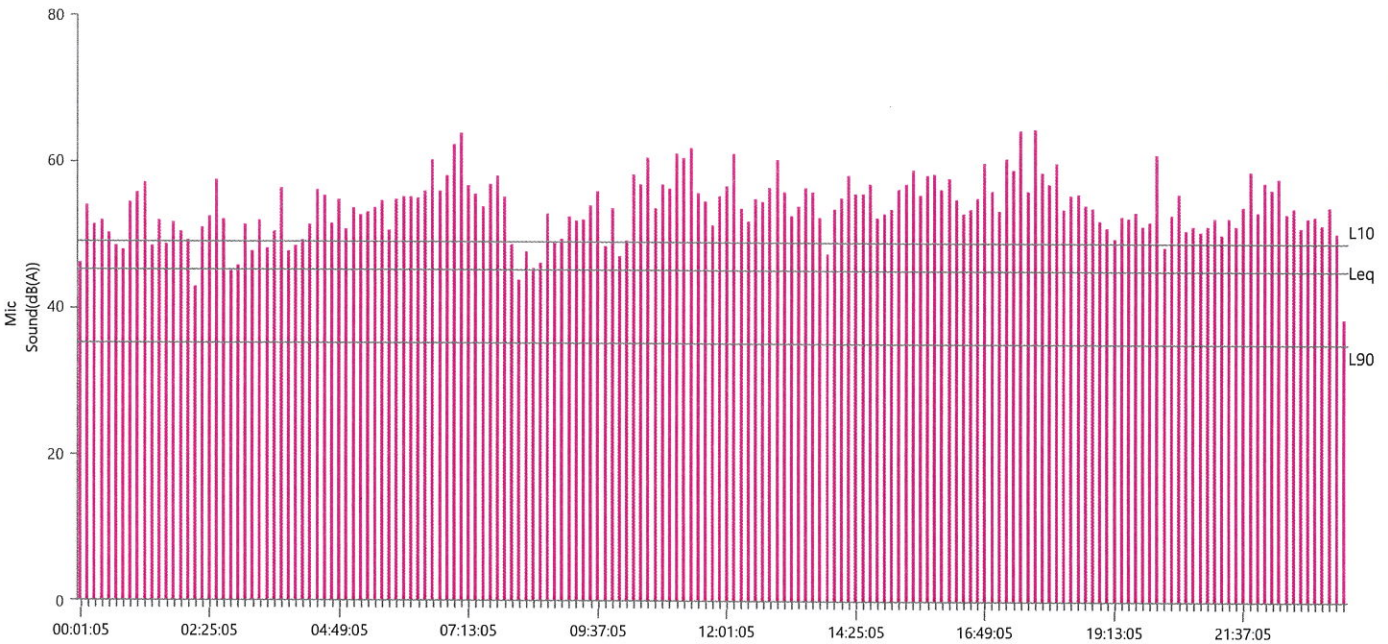
Extended Note N30.490958 W98.213495
Post Event Notes No text to be displayed.

Sound Level Microphone
LMax 64.6 dB(A)
Date Sep 20, 2022
Time 17:46:05
Sound(dB(A))
Sensor Check ✓ Passed
Test Amplitude 1048 mv

A-Weight Slow
 64.6 dB(A)
 Sep 20, 2022
 17:46:05

LMin	L10	L90	Leq
30.4	49	35	45.1

Sensor Check



✓ Passed

Waveform Trigger Source
 Trigger Level(s)
 Trigger Level (Mic)
 Pre-Trigger/Record Time
 Sample Rate
 Setup File Name
 Operator

Long at September 20, 2022 10:34:37
 Geo 0.0200 in/s
 Mic 0.01029 psi, 131 dB(L)
 0.50 sec/8.0 sec (Fixed)
 4096 sps
 Spicewood Hwy 71 - Station 1.mmb
 Operator

Serial Number
 Model Number
 Battery Level
 Unit Calibration
 Event File Name
 USB Sensor Support

UM8046
 Micromate ISEE 10.90GC
 3.8 volts
 May 6, 2022 by InstanTEL
 UM8046_20220920103437.IDFW
 Disabled

Notes

Location Station 1
 Client Spicewood Crushed Stone
 Company Hwy 71 Quarry
 General Notes IGS, Inc.

Extended Note N30.49572 W98.21577

Post Event Notes No text to be displayed.

Geophone

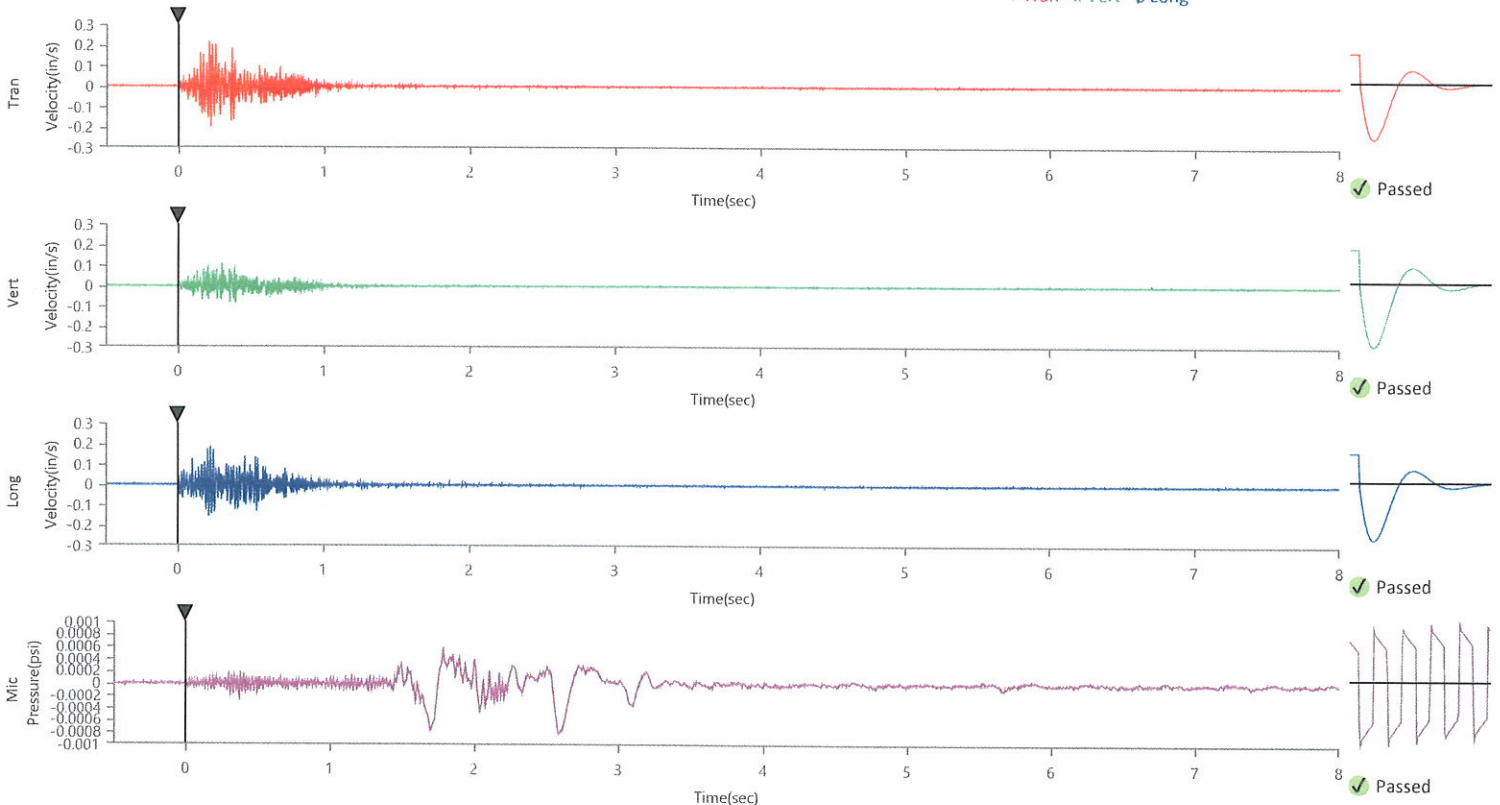
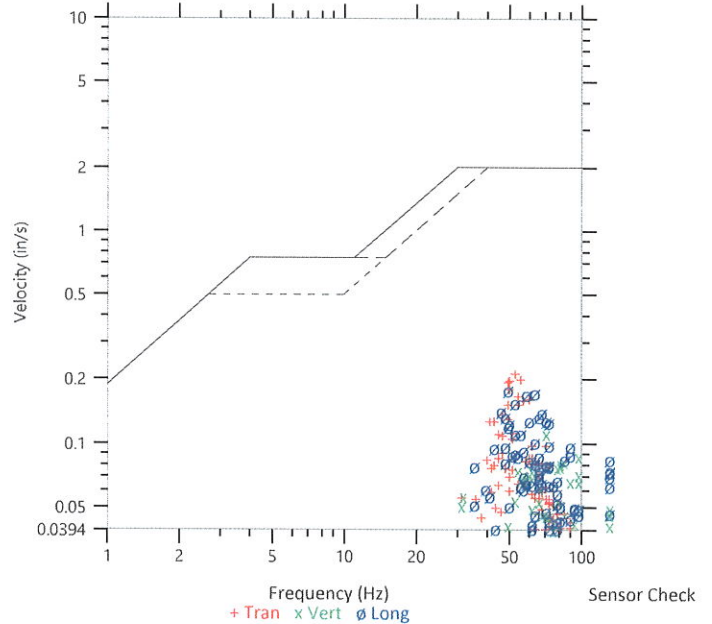
	Tran	Vert	Long
Peak Particle Velocity	0.2185 in/s	0.1130 in/s	0.1822 in/s
Zero Crossing Frequency	52.5 Hz	70.6 Hz	48.8 Hz
Time (Relative to Trigger)	0.209 sec	0.299 sec	0.221 sec
Peak Acceleration	0.263 g	0.145 g	0.204 g
Peak Displacement	0.001 in	0.000 in	0.001 in
Sensor Check	✓ Passed	✓ Passed	✓ Passed
Frequency	7.5 Hz	7.3 Hz	7.1 Hz
Overswing Ratio	4.1	4.0	4.5

Peak Vector Sum 0.2662 in/s at 0.221 sec

ISEE Linear Microphone

Peak Sound Pressure Level 0.000810 psi
 Peak Sound Pressure Level 108.9 dB(L)
 Time (Relative to Trigger) 2.582 sec
 Zero Crossing Frequency 3.6 Hz
 Sensor Check ✓ Passed
 Frequency 19.7 Hz
 Test Amplitude 1297 mv

USBM R18507 And OSMRE
 Velocity versus Frequency (Zero Crossing)



Waveform Trigger Source
 Trigger Level(s)
 Trigger Level (Mic)
 Pre-Trigger/Record Time
 Sample Rate
 Setup File Name
 Operator

Tran at September 20, 2022 10:34:37
 Geo 0.0200 in/s
 Mic 0.01029 psi, 131 dB(L)
 0.50 sec/8.0 sec (Fixed)
 4096 sps
 Spicewood Hwy 71 - Station 2.mmb
 Operator

Serial Number
 Model Number
 Battery Level
 Unit Calibration
 Event File Name
 USB Sensor Support

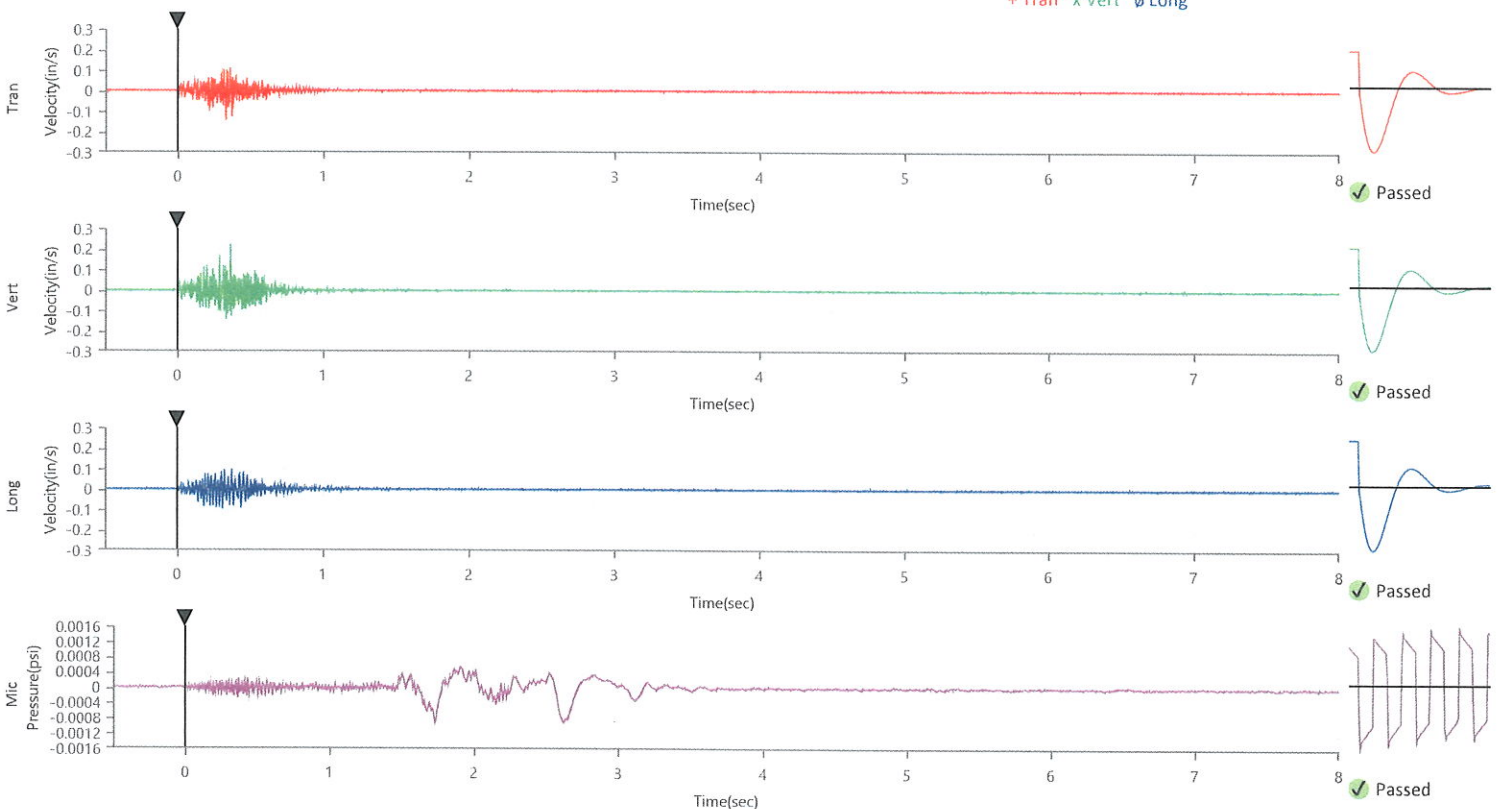
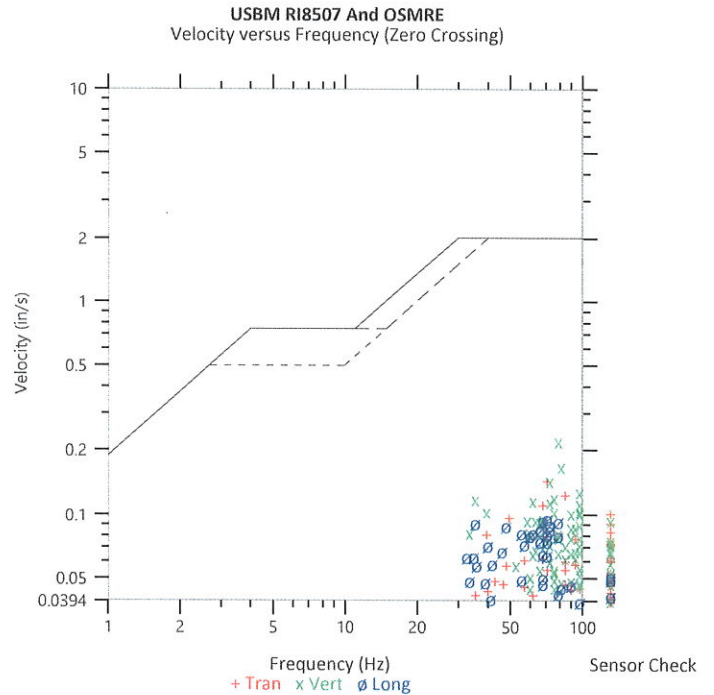
UM9068
 Micromate ISEE 10.90FB
 3.8 volts
 December 2, 2021 by Instantel
 UM9068_20220920103437.IDFW
 Disabled

Notes
 Location Station 2
 Client Spicewood Crushed Stone
 Company Hwy 71
 General Notes IGS, Inc

Extended Note N30.49650 W21572
Post Event Notes No text to be displayed.

Geophone	Tran	Vert	Long
Peak Particle Velocity	0.1465 in/s	0.2259 in/s	0.0974 in/s
Zero Crossing Frequency	70.6 Hz	78.8 Hz	70.6 Hz
Time (Relative to Trigger)	0.329 sec	0.364 sec	0.373 sec
Peak Acceleration	0.194 g	0.270 g	0.151 g
Peak Displacement	0.000 in	0.000 in	0.000 in
Sensor Check	✓ Passed	✓ Passed	✓ Passed
Frequency	7.3 Hz	7.7 Hz	7.5 Hz
Overswing Ratio	3.9	3.6	3.4
Peak Vector Sum	0.2266 in/s at 0.364 sec		

ISEE Linear Microphone	
Peak Sound Pressure Level	0.000929 psi
Peak Sound Pressure Level	110.1 dB(L)
Time (Relative to Trigger)	1.728 sec
Zero Crossing Frequency	3.1 Hz
Sensor Check	✓ Passed
Frequency	19.7 Hz
Test Amplitude	1272 mv



Waveform Trigger Source
 Trigger Level(s)
 Trigger Level (Mic)
 Pre-Trigger/Record Time
 Sample Rate
 Setup File Name
 Operator

Vert at September 20, 2022 10:34:37
 Geo 0.0200 in/s
 Mic 0.01029 psi, 131 dB(L)
 0.50 sec/8.0 sec (Fixed)
 4096 sps
 Spicewood Hwy 71 - Station 3.mmb
 Operator

Serial Number
 Model Number
 Battery Level
 Unit Calibration
 Event File Name
 USB Sensor Support

UM6503
 Micromate ISEE 10.90GC
 3.8 volts
 July 18, 2022 by Instantel
 UM6503_20220920103437.IDFW
 Disabled

Notes

Location Station 3
 Client Spicewood Crushed Stone
 Company Hwy 71 Quarry
 General Notes IGS, Inc.

Extended Note N30.49742 W98.21566

Post Event Notes No text to be displayed.

Geophone

Peak Particle Velocity
 Zero Crossing Frequency
 Time (Relative to Trigger)
 Peak Acceleration
 Peak Displacement
 Sensor Check
 Frequency
 Overswing Ratio

Tran
 0.1086 in/s
 55.4 Hz
 0.432 sec
 0.155 g
 0.000 in
 ✓ Passed
 7.3 Hz
 3.3

Vert
 0.1592 in/s
 >100 Hz
 0.271 sec
 0.293 g
 0.000 in
 ✓ Passed
 7.5 Hz
 3.5

Long
 0.1586 in/s
 70.6 Hz
 0.302 sec
 0.191 g
 0.000 in
 ✓ Passed
 7.3 Hz
 4.1

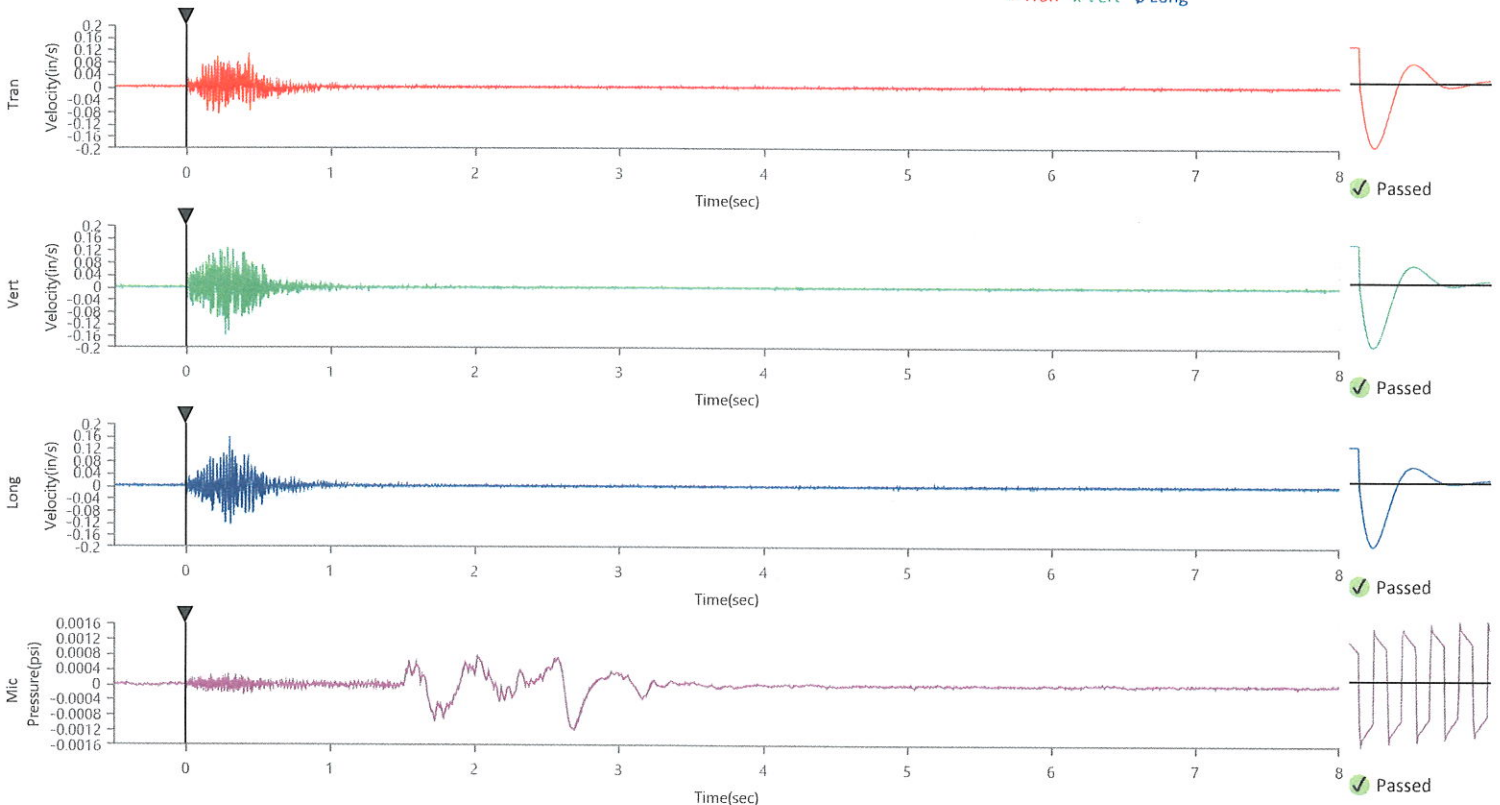
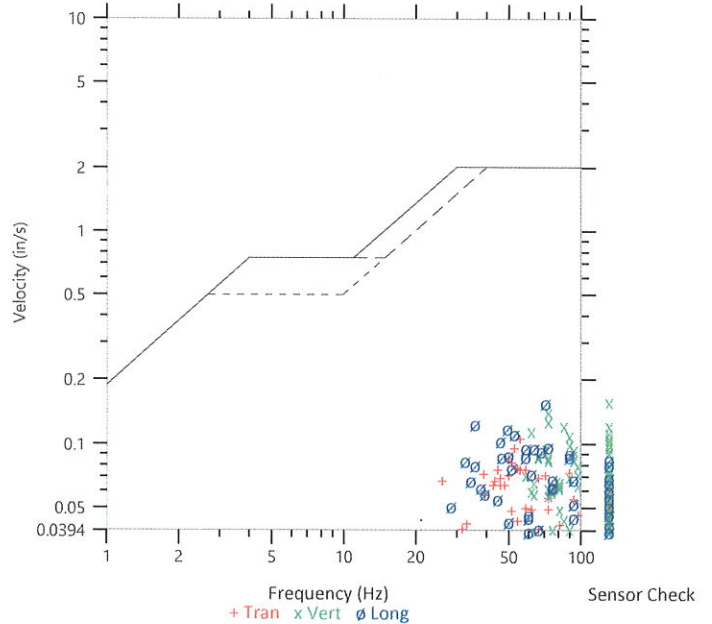
Peak Vector Sum 0.1773 in/s at 0.302 sec

ISEE Linear Microphone

Peak Sound Pressure Level
 Peak Sound Pressure Level
 Time (Relative to Trigger)
 Zero Crossing Frequency
 Sensor Check
 Frequency
 Test Amplitude

0.001163 psi
 112.1 dB(L)
 2.685 sec
 2.5 Hz
 ✓ Passed
 20.5 Hz
 1325 mv

USBM R18507 And OSMRE
 Velocity versus Frequency (Zero Crossing)



Waveform Trigger Source
 Trigger Level(s)
 Trigger Level (Mic)
 Pre-Trigger/Record Time
 Sample Rate
 Setup File Name
 Operator

Vert at September 20, 2022 10:34:38
 Geo 0.0200 in/s
 Mic 0.01029 psi, 131 dB(L)
 0.50 sec/8.0 sec (Fixed)
 4096 sps
 Spicewood Hwy 71 - Station 4.mmb
 Operator

Serial Number
 Model Number
 Battery Level
 Unit Calibration
 Event File Name
 USB Sensor Support

UM8003
 Micromate ISEE 10.90GC
 3.8 volts
 July 20, 2022 by Instantel
 UM8003_20220920103438.IDFW
 Disabled

Notes

Location Station 4
 Client Spicewood Crushed Stone
 Company Hwy 71 Quarry
 General Notes IGS, Inc.

Extended Note N30.49821 W98.21578

Post Event Notes No text to be displayed.

Geophone

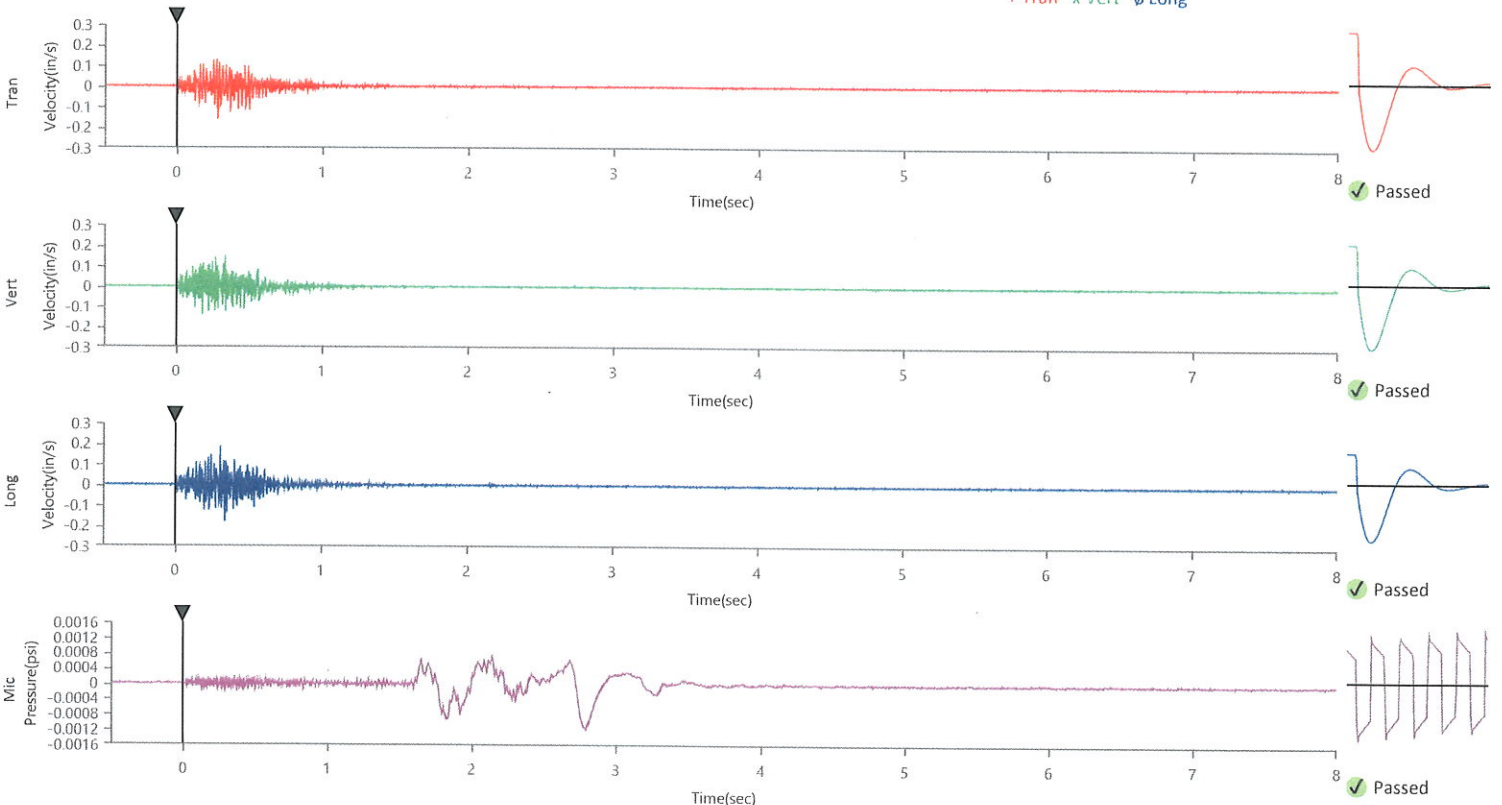
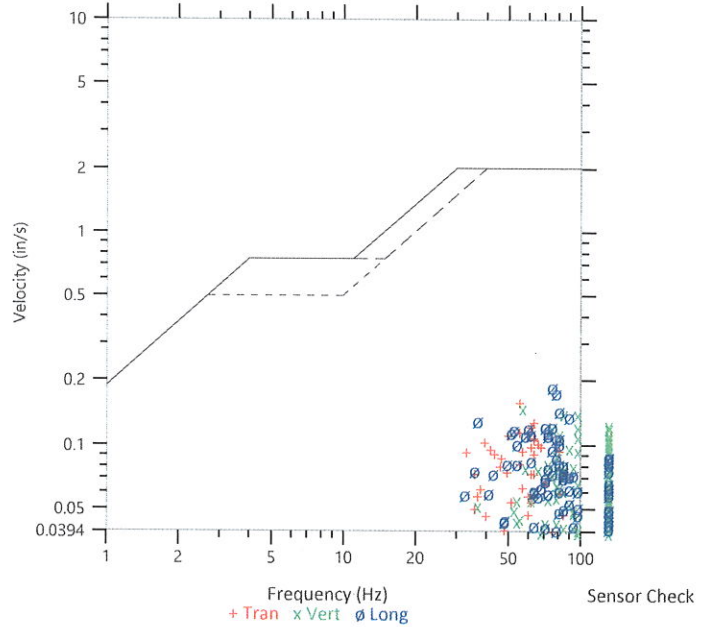
	Tran	Vert	Long
Peak Particle Velocity	0.1595 in/s	0.1511 in/s	0.1884 in/s
Zero Crossing Frequency	55.4 Hz	56.9 Hz	75.9 Hz
Time (Relative to Trigger)	0.278 sec	0.332 sec	0.305 sec
Peak Acceleration	0.145 g	0.263 g	0.237 g
Peak Displacement	0.000 in	0.000 in	0.000 in
Sensor Check	✓ Passed	✓ Passed	✓ Passed
Frequency	7.3 Hz	7.3 Hz	7.5 Hz
Overswing Ratio	3.4	3.6	3.4

Peak Vector Sum 0.1992 in/s at 0.279 sec

ISEE Linear Microphone

Peak Sound Pressure Level 0.001148 psi
 Peak Sound Pressure Level 111.9 dB(L)
 Time (Relative to Trigger) 2.781 sec
 Zero Crossing Frequency 2.6 Hz
 Sensor Check ✓ Passed
 Frequency 20.5 Hz
 Test Amplitude 1329 mv

USBM RI8507 And OSMRE
 Velocity versus Frequency (Zero Crossing)



Waveform Trigger Source
 Trigger Level(s)
 Trigger Level (Mic)
 Pre-Trigger/Record Time
 Sample Rate
 Setup File Name
 Operator

Long at September 20, 2022 10:34:37
 Geo 0.0200 in/s
 Mic 0.01029 psi, 131 dB(L)
 0.50 sec/8.0 sec (Fixed)
 4096 sps
 Spicewood Hwy 71 - Station 5.mmb
 Operator

Serial Number
 Model Number
 Battery Level
 Unit Calibration
 Event File Name
 USB Sensor Support

UM7111
 Micromate ISEE 10.90GC
 3.8 volts
 July 20, 2022 by InstanTEL
 UM7111_20220920103437.IDFW
 Disabled

Notes

Location Station 5
 Client Spicewood Crushed Stone
 Company Hwy 71 Quarry
 General Notes IGS, Inc.

Extended Note N30.49911 W98.21538

Post Event Notes No text to be displayed.

Geophone

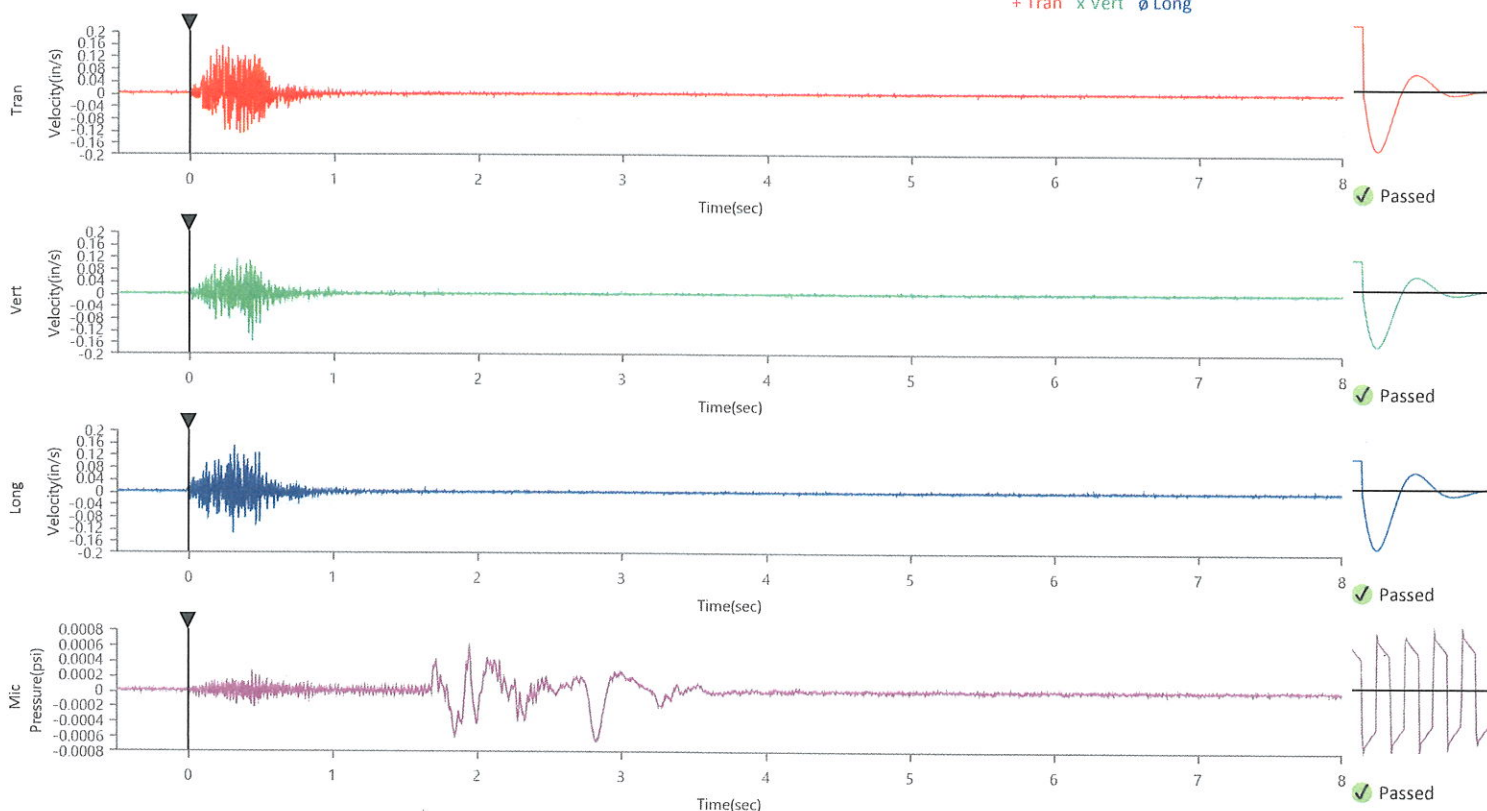
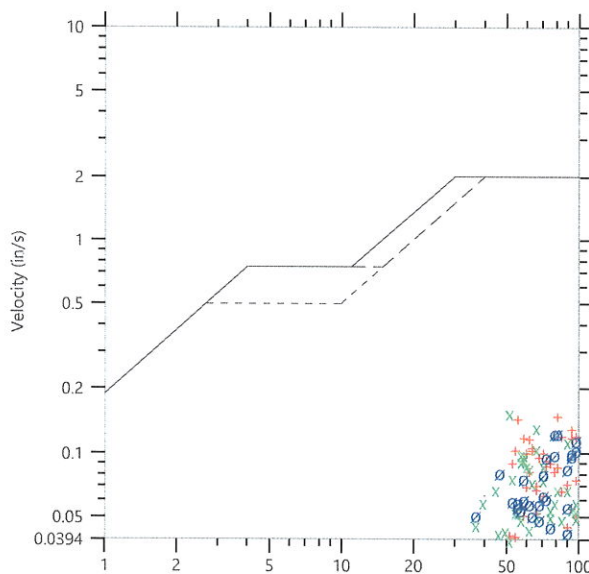
	Tran	Vert	Long
Peak Particle Velocity	0.1517 in/s	0.1564 in/s	0.1480 in/s
Zero Crossing Frequency	81.9 Hz	51.2 Hz	>100 Hz
Time (Relative to Trigger)	0.225 sec	0.437 sec	0.313 sec
Peak Acceleration	0.309 g	0.201 g	0.283 g
Peak Displacement	0.000 in	0.000 in	0.000 in
Sensor Check	✓ Passed	✓ Passed	✓ Passed
Frequency	7.3 Hz	7.3 Hz	7.3 Hz
Overswing Ratio	3.7	3.9	3.5

Peak Vector Sum 0.1746 in/s at 0.266 sec

ISEE Linear Microphone

Peak Sound Pressure Level 0.000650 psi
 Peak Sound Pressure Level 107.0 dB(L)
 Time (Relative to Trigger) 2.816 sec
 Zero Crossing Frequency 3.6 Hz
 Sensor Check ✓ Passed
 Frequency 20.5 Hz
 Test Amplitude 1332 mv

USBM RI8507 And OSMRE
 Velocity versus Frequency (Zero Crossing)



Waveform Trigger Source
 Trigger Level(s)
 Trigger Level (Mic)
 Pre-Trigger/Record Time
 Sample Rate
 Setup File Name
 Operator

Vert at September 20, 2022 10:34:37
 Geo 0.0200 in/s
 Mic 0.01029 psi, 131 dB(L)
 0.50 sec/8.0 sec (Fixed)
 4096 sps
 Spicewood Hwy 71 - Station 6.mmb
 Operator

Serial Number
 Model Number
 Battery Level
 Unit Calibration
 Event File Name
 USB Sensor Support

UM7450
 Micromate ISEE 10.90GC
 3.8 volts
 August 4, 2022 by InstanTEL
 UM7450_20220920103437.IDFW
 Disabled

Notes

Location Station 6
 Client Spicewood Crushed Stone
 Company Hwy 71 Quarry
 General Notes IGS, Inc.

Extended Note N30.495113 W98.206539

Post Event Notes No text to be displayed.

Geophone

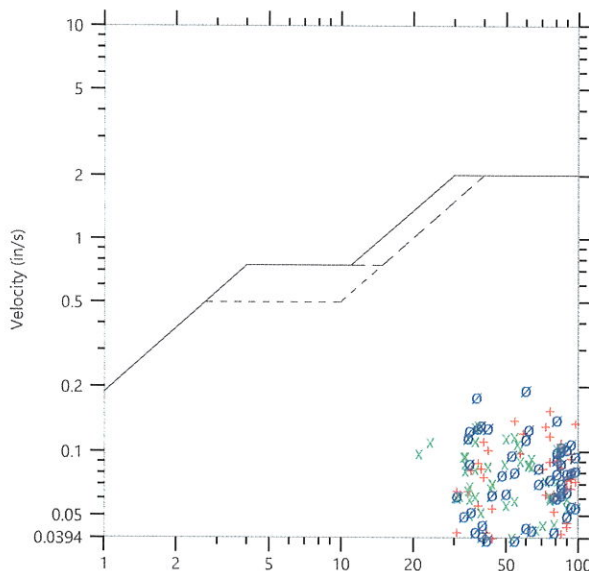
	Tran	Vert	Long
Peak Particle Velocity	0.1567 in/s	0.1359 in/s	0.1970 in/s
Zero Crossing Frequency	75.9 Hz	37.9 Hz	60.2 Hz
Time (Relative to Trigger)	0.224 sec	0.428 sec	0.305 sec
Peak Acceleration	0.260 g	0.132 g	0.257 g
Peak Displacement	0.000 in	0.001 in	0.001 in
Sensor Check	✓ Passed	✓ Passed	✓ Passed
Frequency	7.3 Hz	7.5 Hz	7.1 Hz
Overswing Ratio	4.0	3.9	5.2

Peak Vector Sum 0.2110 in/s at 0.306 sec

ISEE Linear Microphone

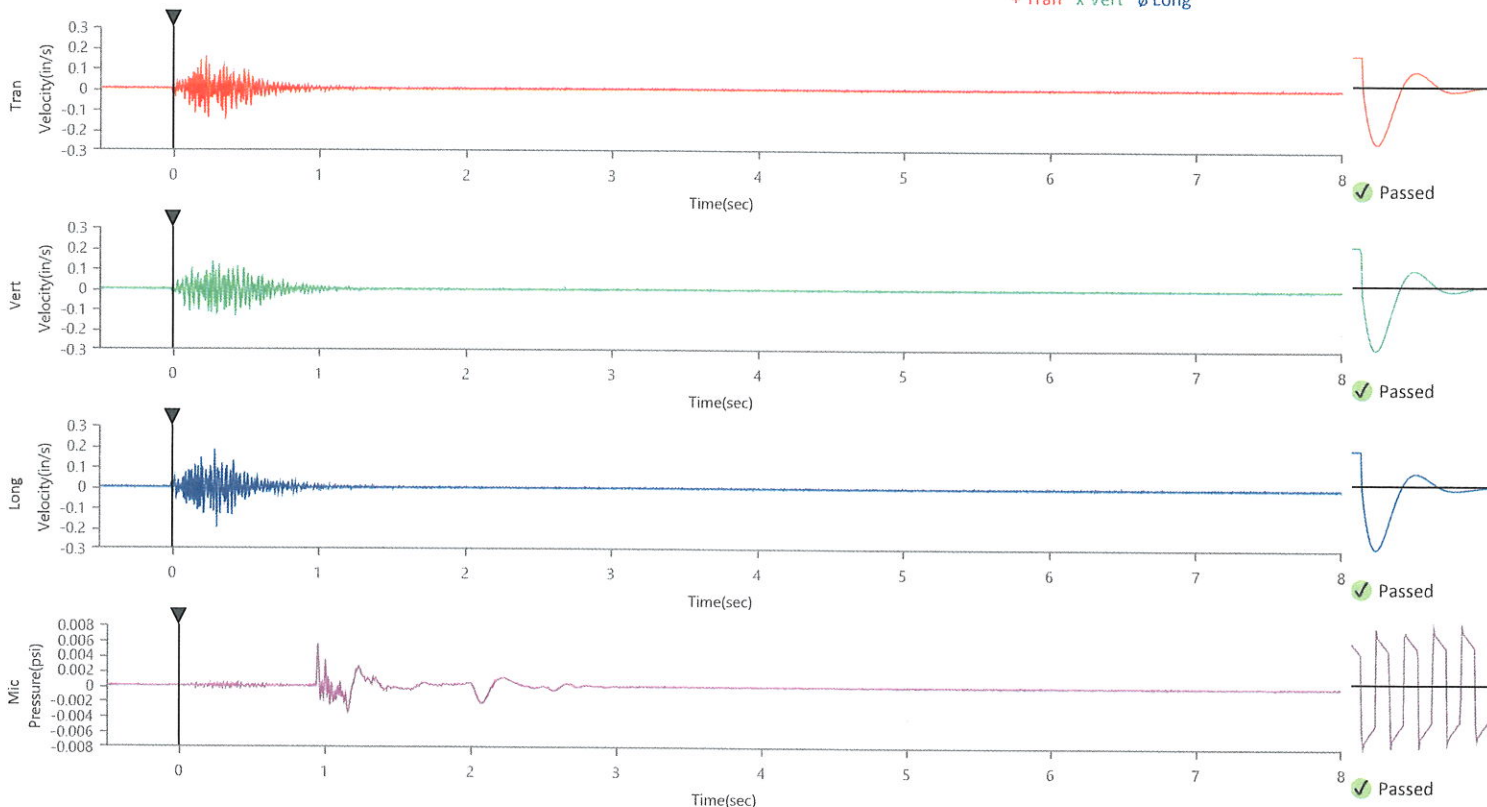
Peak Sound Pressure Level	0.005587 psi
Peak Sound Pressure Level	125.7 dB(L)
Time (Relative to Trigger)	0.953 sec
Zero Crossing Frequency	19.9 Hz
Sensor Check	✓ Passed
Frequency	20.5 Hz
Test Amplitude	1323 mv

USBM RI8507 And OSMRE
 Velocity versus Frequency (Zero Crossing)



Frequency (Hz)
 + Tran x Vert o Long

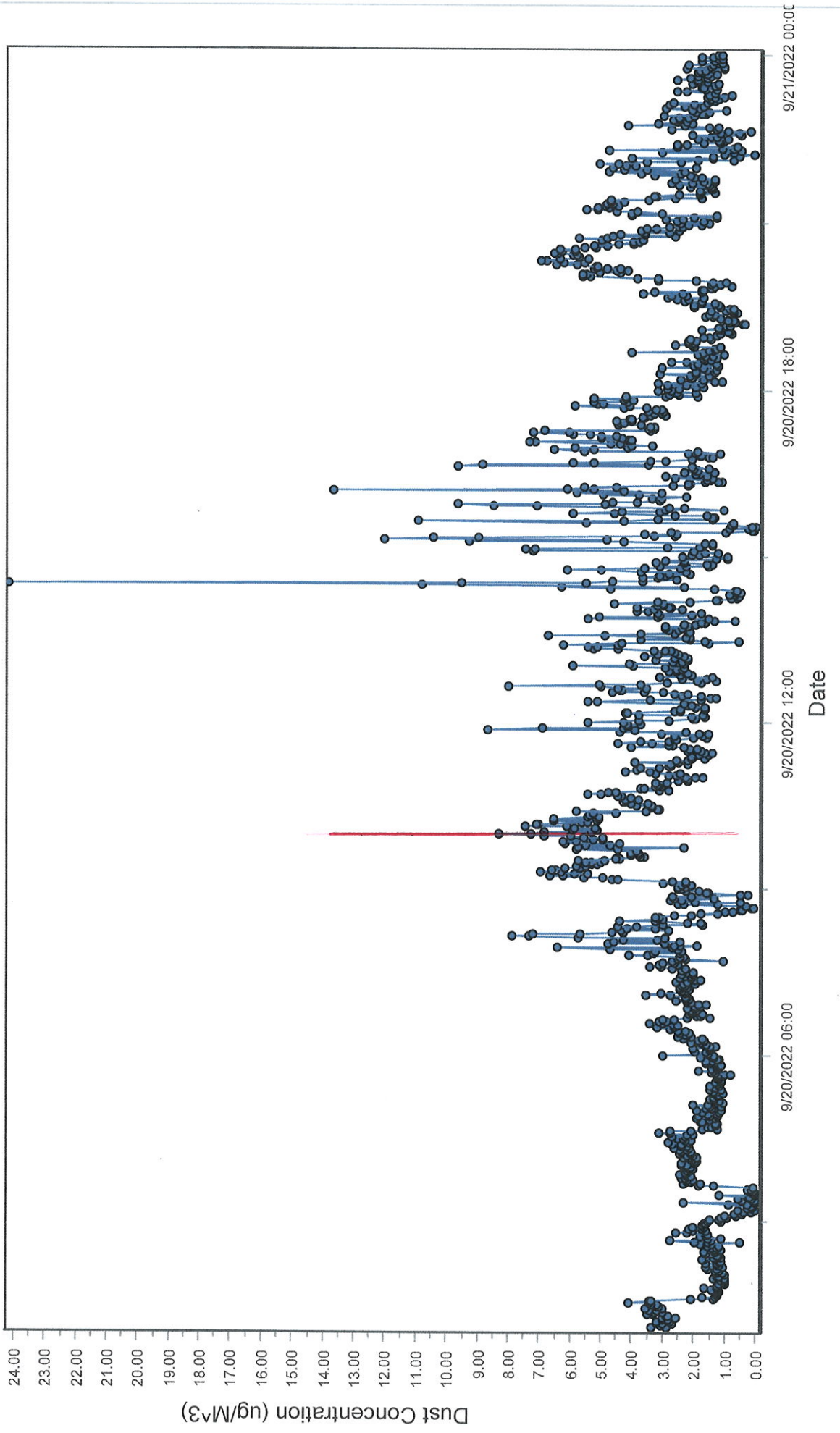
Sensor Check



Spicewood Crushed Stone - Hwy 71 Quarry

North Dust Monitor

● D100@AvgPartL



Spicewood Crushed Stone - Hwy 71 Quarry

South Dust Monitor

● D100@AvgPartL

