

Date/Time	Unit	Unit Location	Blast		Distance	PPV	Geo ZCF	Sound Level Microphone			
			Blast Number	Blast Location				PSPL	Peak	Time of Peak	Leq
10/14/22 0:00	UM13917	Noise 2	16 & 17-22	Level 1	2181.1 ft	-	-	-	64.9 dB(A)	12:37:18	46.8 dB
10/14/22 0:00	UM13907	Noise 3	16 & 17-22	Level 1	2201.7 ft	-	-	-	65.6 dB(A)	14:31:05	46.1
10/14/22 12:37	UM8046	Station 1	16 & 17-22	Level 1	1971.1 ft	0.2554 in/s	64.0 Hz	109.3 dB(L)	-	-	-
10/14/22 12:37	UM9068	Station 2	16 & 17-22	Level 1	1962.2 ft	0.1924 in/s	81.9 Hz	108.8 dB(L)	-	-	-
10/14/22 12:37	UM6503	Station 3	16 & 17-22	Level 1	2008.2 ft	0.1936 in/s	62.1 Hz	110.4 dB(L)	-	-	-
10/14/22 12:37	UM8003	Station 4	16 & 17-22	Level 1	2139.7 ft	0.2150 in/s	56.9 Hz	110.5 dB(L)	-	-	-
10/14/22 12:37	UM7111	Station 5	16 & 17-22	Level 1	2183.7 ft	0.2405 in/s	>100.0 Hz	105.8 dB(L)	-	-	-
10/14/22 12:37	UM7450	Station 6	16 & 17-22	Level 1	983.6 ft	0.2712 in/s	35.3 Hz	122.2 dB(L)	-	-	-

**Start** October 14, 2022 00:00:04  
**Finish** October 14, 2022 23:29:59  
**Number of Intervals/Interval** 42297.75/2 sec  
**Sample Rate** 4096 sps  
**Setup File Name** Spicewood Hwy 71 - Noise 2.mmb  
**Operator** Operator

**Serial Number** UM13917  
**Model Number** Micromate ISEE 10.90GC  
**Battery Level** 3.8 volts  
**Unit Calibration** July 19, 2022 by InstanTel  
**Microphone Calibration** UA10038, July 19, 2022 by InstanTel  
**Event File Name** UM13917\_20221014000004.IDFH  
**USB Sensor Support** Disabled

**Notes**  
**Location** Noise 2  
**Client** Spicewood Crushed Stone  
**Company** Hwy 71 Quarry  
**General Notes** IGS, Inc.

**Extended Note** Station 5N30.49911 W98.21538

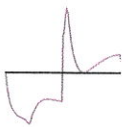
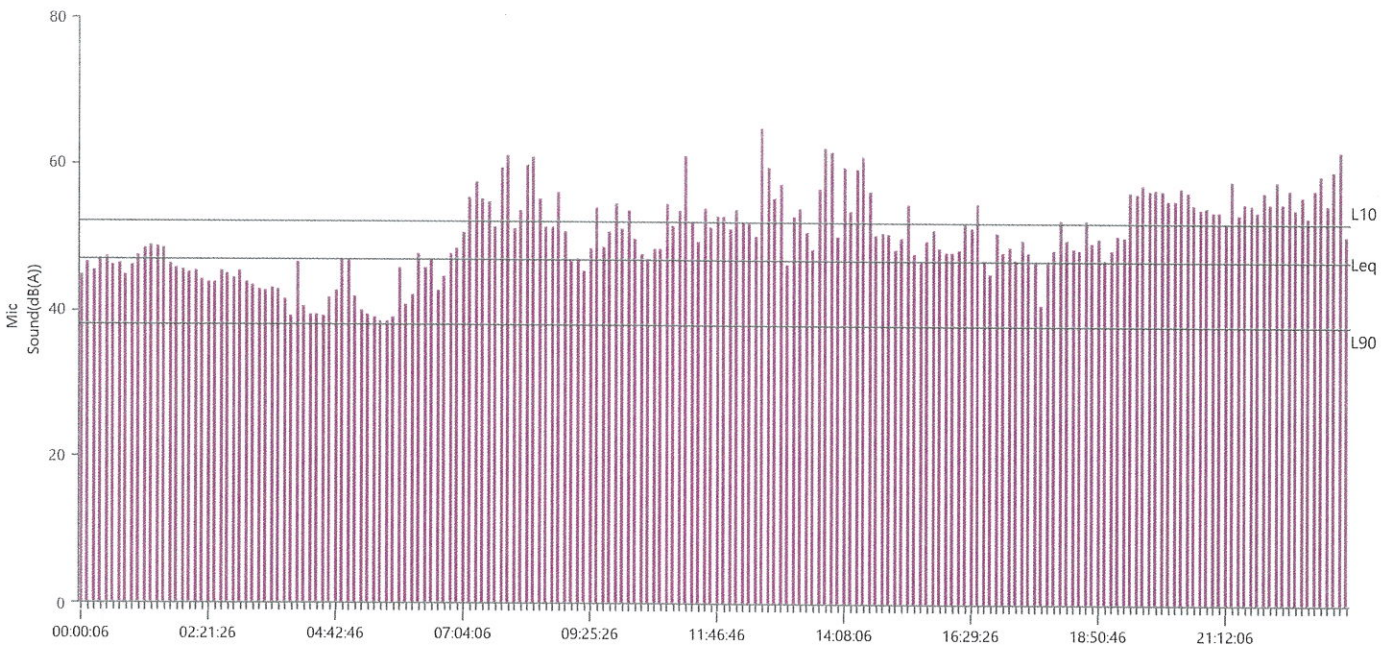
**Post Event Notes** No text to be displayed.

**Sound Level Microphone**  
**LMax** 64.9 dB(A)  
**Date** Oct 14, 2022  
**Time** 12:37:18  
**Sound(dB(A))**  
**Sensor Check** ✔ Passed  
**Test Amplitude** 1093 mv

**A-Weight Slow**  
 64.9 dB(A)  
 Oct 14, 2022  
 12:37:18  

LMin	L10	L90	Leq
34.6	52	38	46.8

Sensor Check



✔ Passed

**Start** October 14, 2022 00:00:05  
**Finish** October 14, 2022 23:29:58  
**Number of Intervals/Interval** 1409.89/60 sec  
**Sample Rate** 4096 sps  
**Setup File Name** Spicewood Hwy 71 - Noise 3.mmb  
**Operator** Operator

**Serial Number**  
**Model Number**  
**Battery Level**  
**Unit Calibration**  
**Microphone Calibration**  
**Event File Name**  
**USB Sensor Support**

UM13907  
 Micromate ISEE 10.90GC  
 3.8 volts  
 August 2, 2022 by InstanTel  
 UA10761, July 29, 2022 by InstanTel  
 UM13907\_20221014000005.IDFH  
 Disabled

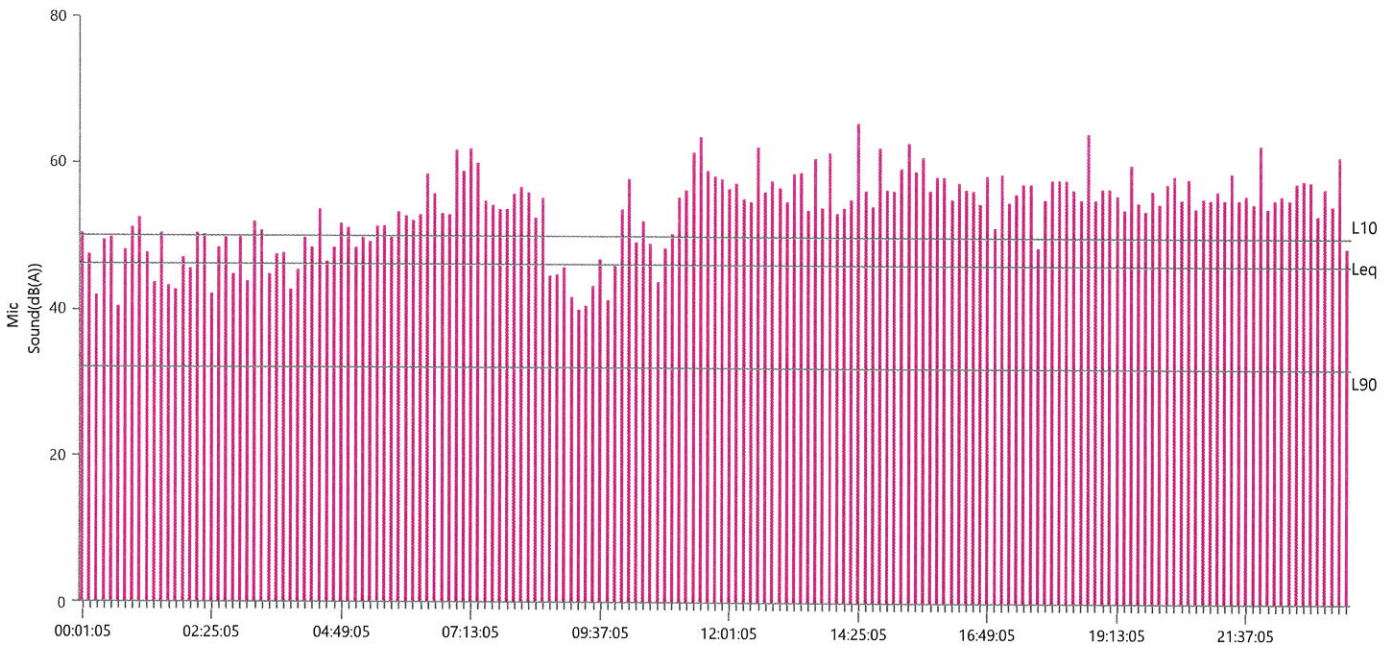
**Notes**  
**Location** Noise 3  
**Client** Spicewood Crushed Stone  
**Company** Hwy 71 Quarry  
**General Notes** IGS, Inc.

**Extended Note** N30.490958 W98.213495  
**Post Event Notes** No text to be displayed.

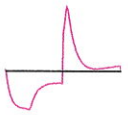
**Sound Level Microphone**  
**LMax** 65.6 dB(A)  
**Date** Oct 14, 2022  
**Time** 14:31:05  
**Sound(dB(A))**  
**Sensor Check** ✓ Passed  
**Test Amplitude** 1088 mv

**A-Weight Slow**  
 65.6 dB(A)  
 Oct 14, 2022  
 14:31:05  

LMin	L10	L90	Leq
30.4	50	32	46.1



Sensor Check



✓ Passed



Waveform Trigger Source  
 Trigger Level(s)  
 Trigger Level (Mic)  
 Pre-Trigger/Record Time  
 Sample Rate  
 Setup File Name  
 Operator

Long at October 14, 2022 12:37:17  
 Geo 0.0200 in/s  
 Mic 0.01029 psi, 131 dB(L)  
 0.50 sec/8.0 sec (Fixed)  
 4096 sps  
 Spicewood Hwy 71 - Station 1.mmb  
 Operator

Serial Number  
 Model Number  
 Battery Level  
 Unit Calibration  
 Event File Name  
 USB Sensor Support

UM8046  
 Micromate ISEE 10.90GC  
 3.8 volts  
 May 6, 2022 by InstanTel  
 UM8046\_20221014123717.IDFW  
 Disabled

**Notes**

Location Station 1  
 Client Spicewood Crushed Stone  
 Company Hwy 71 Quarry  
 General Notes IGS, Inc.

Extended Note N30.49572 W98.21577

Post Event Notes No text to be displayed.

**Geophone**

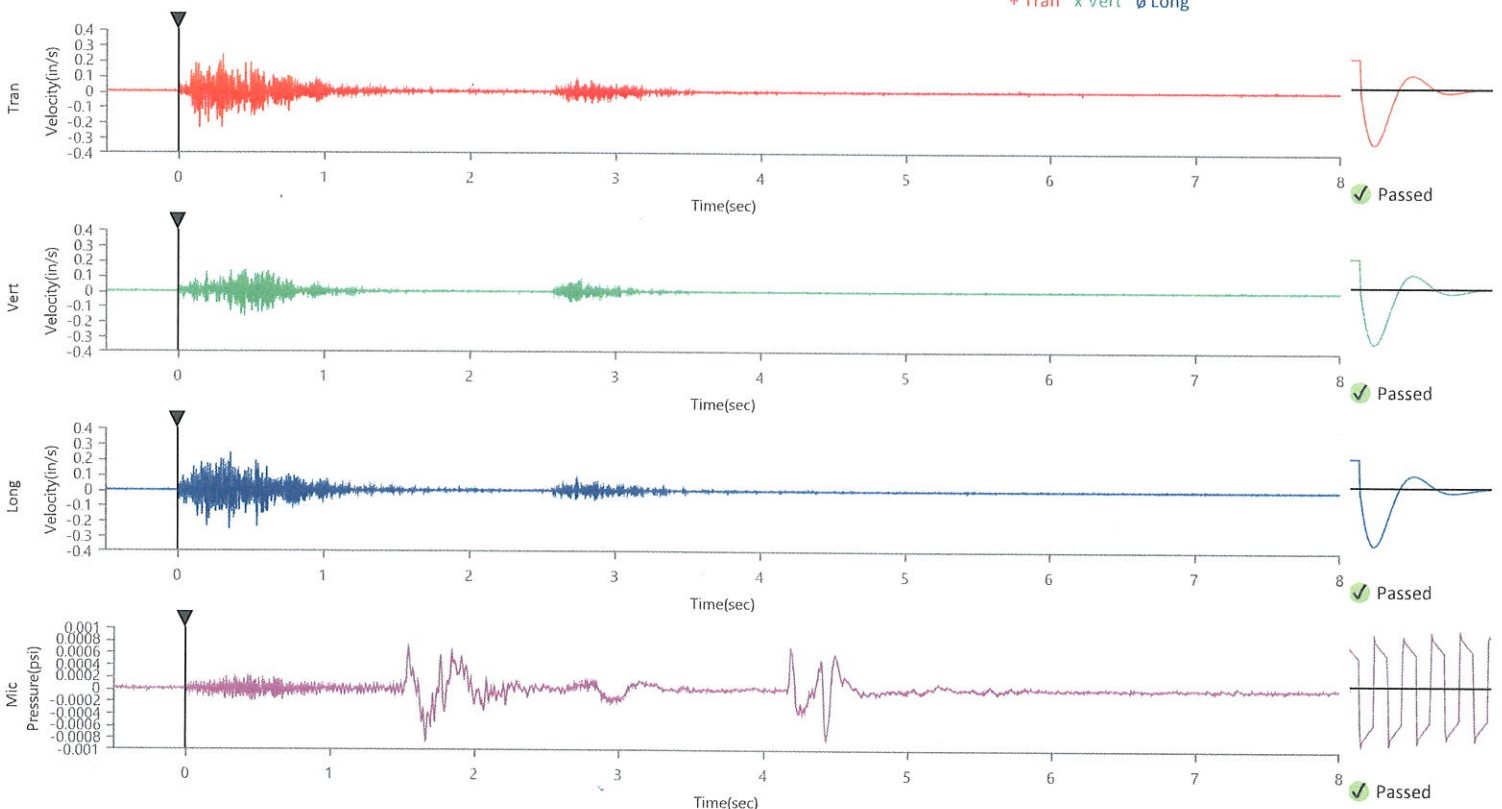
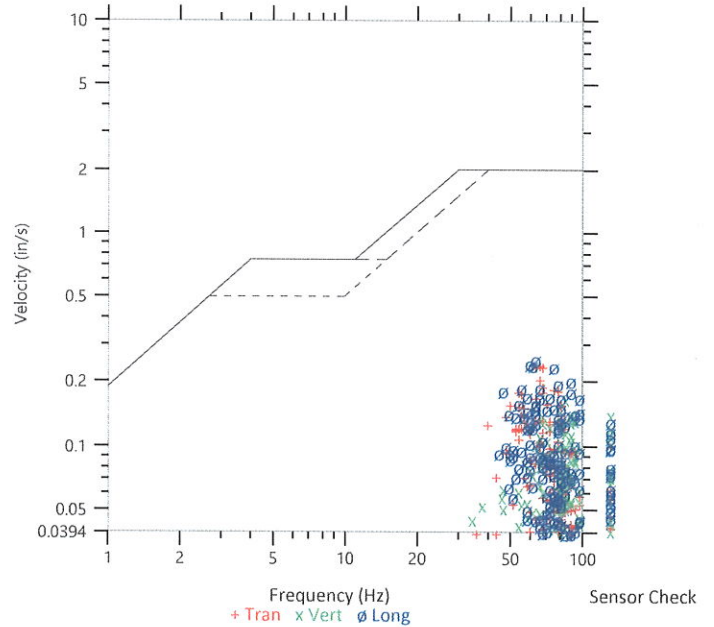
	Tran	Vert	Long
Peak Particle Velocity	0.2402 in/s	0.1673 in/s	0.2554 in/s
Zero Crossing Frequency	66.1 Hz	85.3 Hz	64.0 Hz
Time (Relative to Trigger)	0.142 sec	0.456 sec	0.352 sec
Peak Acceleration	0.296 g	0.260 g	0.375 g
Peak Displacement	0.001 in	0.000 in	0.001 in
Sensor Check	✓ Passed	✓ Passed	✓ Passed
Frequency	7.5 Hz	7.3 Hz	7.1 Hz
Overswing Ratio	4.2	4.0	4.6

Peak Vector Sum 0.3089 in/s at 0.296 sec

**ISEE Linear Microphone**

Peak Sound Pressure Level 0.000844 psi  
 Peak Sound Pressure Level 109.3 dB(L)  
 Time (Relative to Trigger) 1.660 sec  
 Zero Crossing Frequency 4.1 Hz  
 Sensor Check ✓ Passed  
 Frequency 19.7 Hz  
 Test Amplitude 1393 mv

USBM R18507 And OSMRE  
 Velocity versus Frequency (Zero Crossing)



Waveform Trigger Source  
 Trigger Level(s)  
 Trigger Level (Mic)  
 Pre-Trigger/Record Time  
 Sample Rate  
 Setup File Name  
 Operator

Vert at October 14, 2022 12:37:17  
 Geo 0.0200 in/s  
 Mic 0.01029 psi, 131 dB(L)  
 0.50 sec/8.0 sec (Fixed)  
 4096 sps  
 Spicewood Hwy 71 - Station 2.mmb  
 Operator

Serial Number  
 Model Number  
 Battery Level  
 Unit Calibration  
 Event File Name  
 USB Sensor Support

UM9068  
 Micromate ISEE 10.90FB  
 3.8 volts  
 December 2, 2021 by InstanTel  
 UM9068\_20221014123717.IDFW  
 Disabled

**Notes**

Location Station 2  
 Client Spicewood Crushed Stone  
 Company Hwy 71  
 General Notes IGS, Inc

Extended Note N30.49650 W21572

Post Event Notes No text to be displayed.

**Geophone**

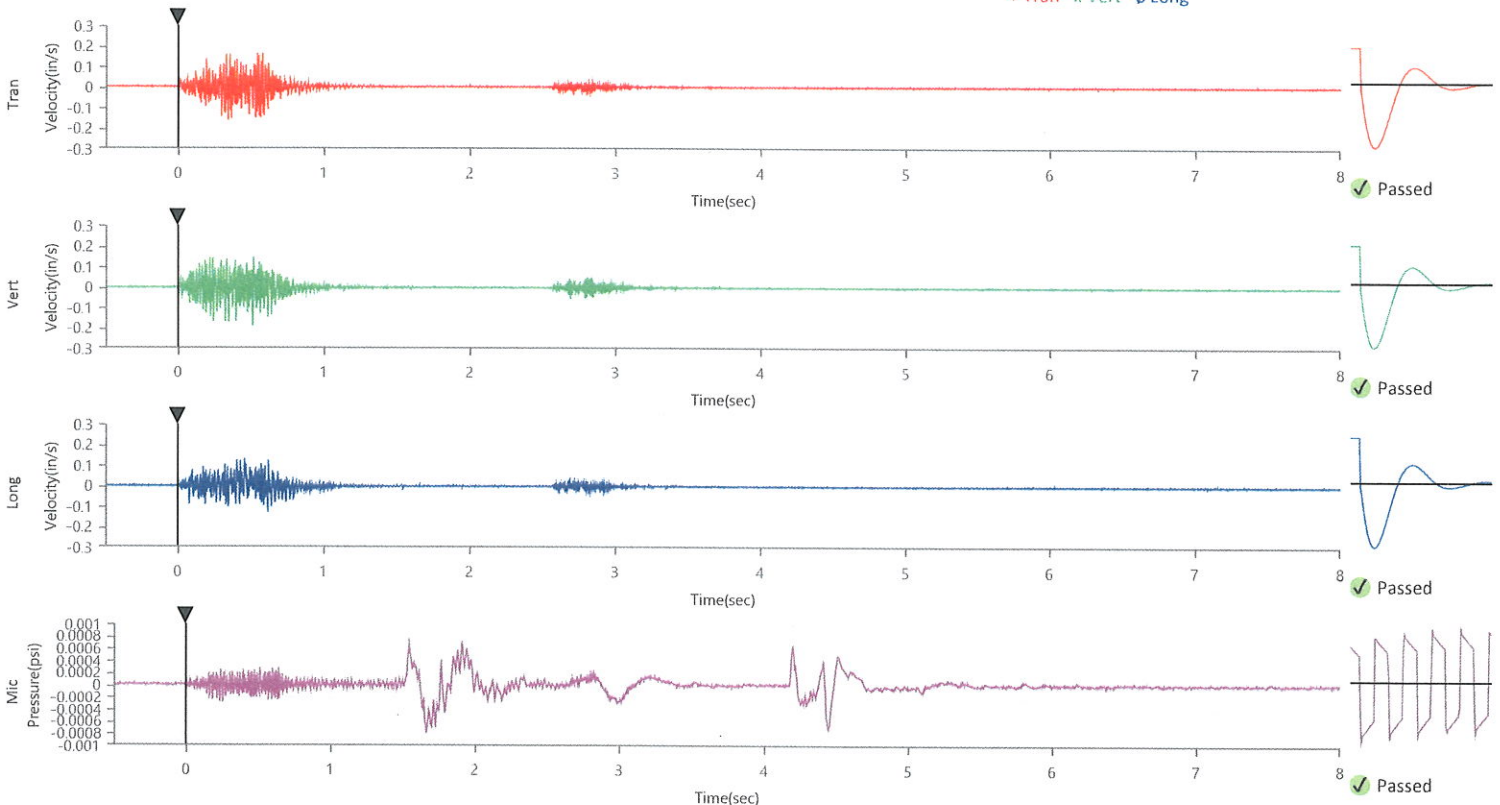
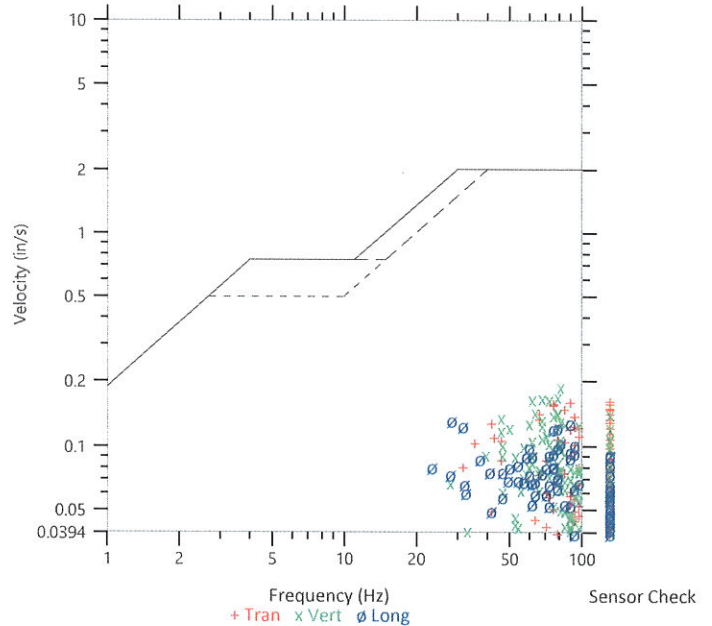
	Tran	Vert	Long
Peak Particle Velocity	0.1648 in/s	0.1924 in/s	0.1341 in/s
Zero Crossing Frequency	>100 Hz	81.9 Hz	28.4 Hz
Time (Relative to Trigger)	0.340 sec	0.511 sec	0.457 sec
Peak Acceleration	0.323 g	0.313 g	0.273 g
Peak Displacement	0.000 in	0.000 in	0.001 in
Sensor Check	✓ Passed	✓ Passed	✓ Passed
Frequency	7.3 Hz	7.5 Hz	7.5 Hz
Overswing Ratio	4.0	3.7	3.4

Peak Vector Sum 0.2107 in/s at 0.512 sec

**ISEE Linear Microphone**

Peak Sound Pressure Level 0.000797 psi  
 Peak Sound Pressure Level 108.8 dB(L)  
 Time (Relative to Trigger) 1.665 sec  
 Zero Crossing Frequency 3.6 Hz  
 Sensor Check ✓ Passed  
 Frequency 19.7 Hz  
 Test Amplitude 1370 mv

USBM R18507 And OSMRE  
 Velocity versus Frequency (Zero Crossing)



Waveform Trigger Source  
 Trigger Level(s)  
 Trigger Level (Mic)  
 Pre-Trigger/Record Time  
 Sample Rate  
 Setup File Name  
 Operator

Vert at October 14, 2022 12:37:16  
 Geo 0.0200 in/s  
 Mic 0.01029 psi, 131 dB(L)  
 0.50 sec/8.0 sec (Fixed)  
 4096 sps  
 Spicewood Hwy 71 - Station 3.mmb  
 Operator

Serial Number  
 Model Number  
 Battery Level  
 Unit Calibration  
 Event File Name  
 USB Sensor Support

UM6503  
 Micromate ISEE 10.90GC  
 3.8 volts  
 July 18, 2022 by InstanTel  
 UM6503\_20221014123716.IDFW  
 Disabled

**Notes**

Location Station 3  
 Client Spicewood Crushed Stone  
 Company Hwy 71 Quarry  
 General Notes IGS, Inc.

Extended Note N30.49742 W98.21566

Post Event Notes No text to be displayed.

**Geophone**

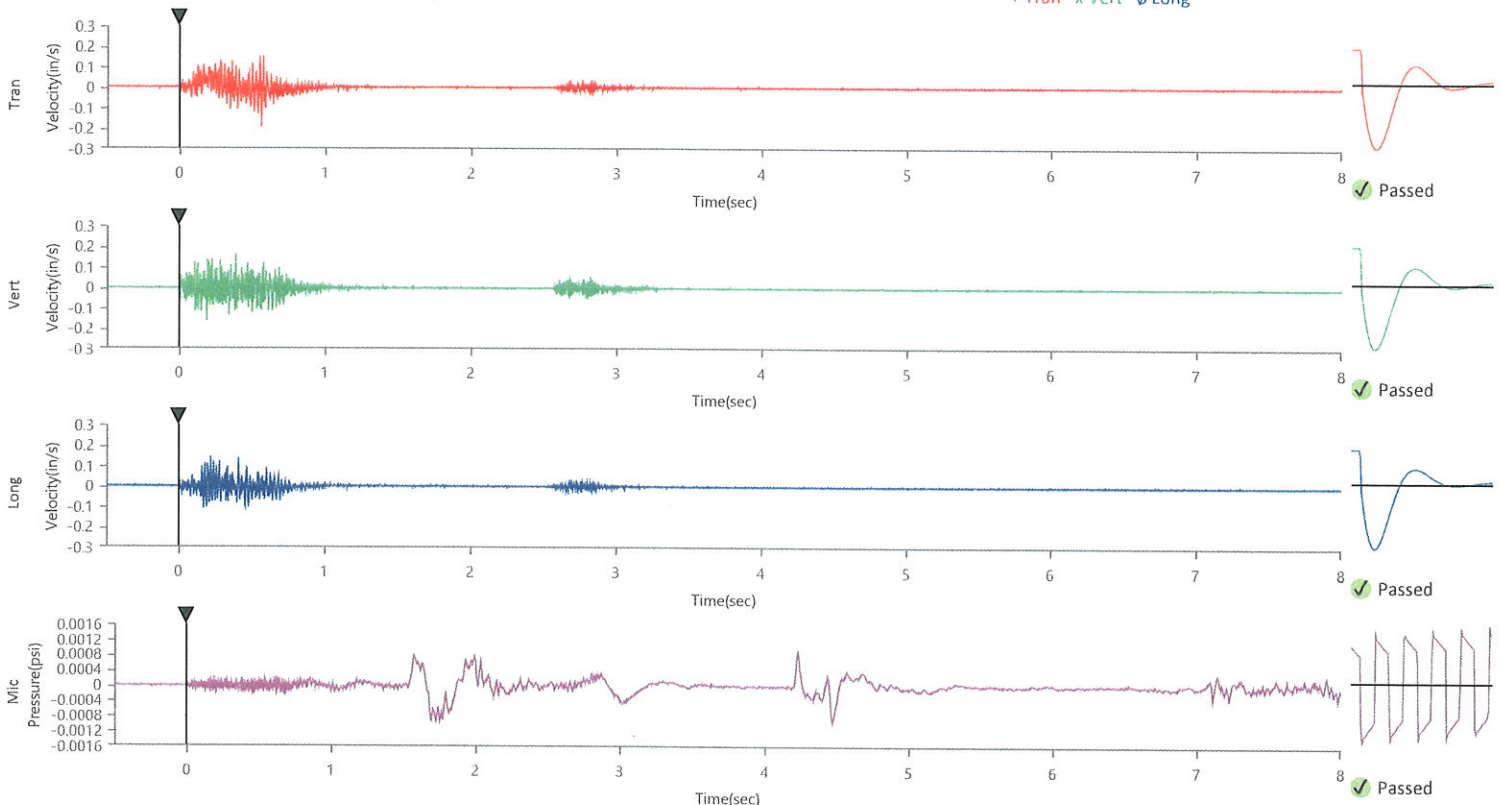
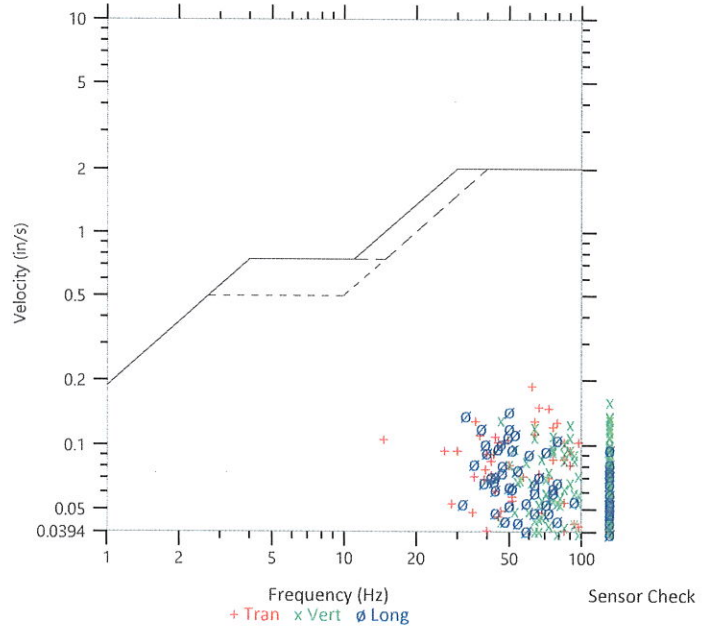
	Tran	Vert	Long
Peak Particle Velocity	0.1936 in/s	0.1632 in/s	0.1458 in/s
Zero Crossing Frequency	62.1 Hz	>100 Hz	50.0 Hz
Time (Relative to Trigger)	0.562 sec	0.187 sec	0.215 sec
Peak Acceleration	0.194 g	0.359 g	0.207 g
Peak Displacement	0.001 in	0.000 in	0.000 in
Sensor Check	✓ Passed	✓ Passed	✓ Passed
Frequency	7.3 Hz	7.5 Hz	7.3 Hz
Overswing Ratio	3.3	3.5	4.1

Peak Vector Sum 0.2036 in/s at 0.278 sec

**ISEE Linear Microphone**

Peak Sound Pressure Level 0.000965 psi  
 Peak Sound Pressure Level 110.4 dB(L)  
 Time (Relative to Trigger) 1.693 sec  
 Zero Crossing Frequency 2.4 Hz  
 Sensor Check ✓ Passed  
 Frequency 20.5 Hz  
 Test Amplitude 1439 mv

USBM R18507 And OSMRE  
 Velocity versus Frequency (Zero Crossing)





Waveform Trigger Source  
 Trigger Level(s)  
 Trigger Level (Mic)  
 Pre-Trigger/Record Time  
 Sample Rate  
 Setup File Name  
 Operator

Vert at October 14, 2022 12:37:17  
 Geo 0.0200 in/s  
 Mic 0.01029 psi, 131 dB(L)  
 0.50 sec/8.0 sec (Fixed)  
 4096 sps  
 Spicewood Hwy 71 - Station 4.mmb  
 Operator

Serial Number  
 Model Number  
 Battery Level  
 Unit Calibration  
 Event File Name  
 USB Sensor Support

UM8003  
 Micromate ISEE 10.90GC  
 3.8 volts  
 July 20, 2022 by Instantel  
 UM8003\_20221014123717.IDFW  
 Disabled

**Notes**

Location Station 4  
 Client Spicewood Crushed Stone  
 Company Hwy 71 Quarry  
 General Notes IGS, Inc.

Extended Note N30.49821 W98.21578

Post Event Notes No text to be displayed.

**Geophone**

Peak Particle Velocity  
 Zero Crossing Frequency  
 Time (Relative to Trigger)  
 Peak Acceleration  
 Peak Displacement  
 Sensor Check  
 Frequency  
 Overswing Ratio

Tran	Vert	Long
0.2150 in/s	0.1921 in/s	0.1921 in/s
56.9 Hz	68.3 Hz	48.8 Hz
0.551 sec	0.512 sec	0.413 sec
0.253 g	0.309 g	0.257 g
0.001 in	0.000 in	0.001 in
✓ Passed	✓ Passed	✓ Passed
7.3 Hz	7.3 Hz	7.3 Hz
3.5	3.7	3.5

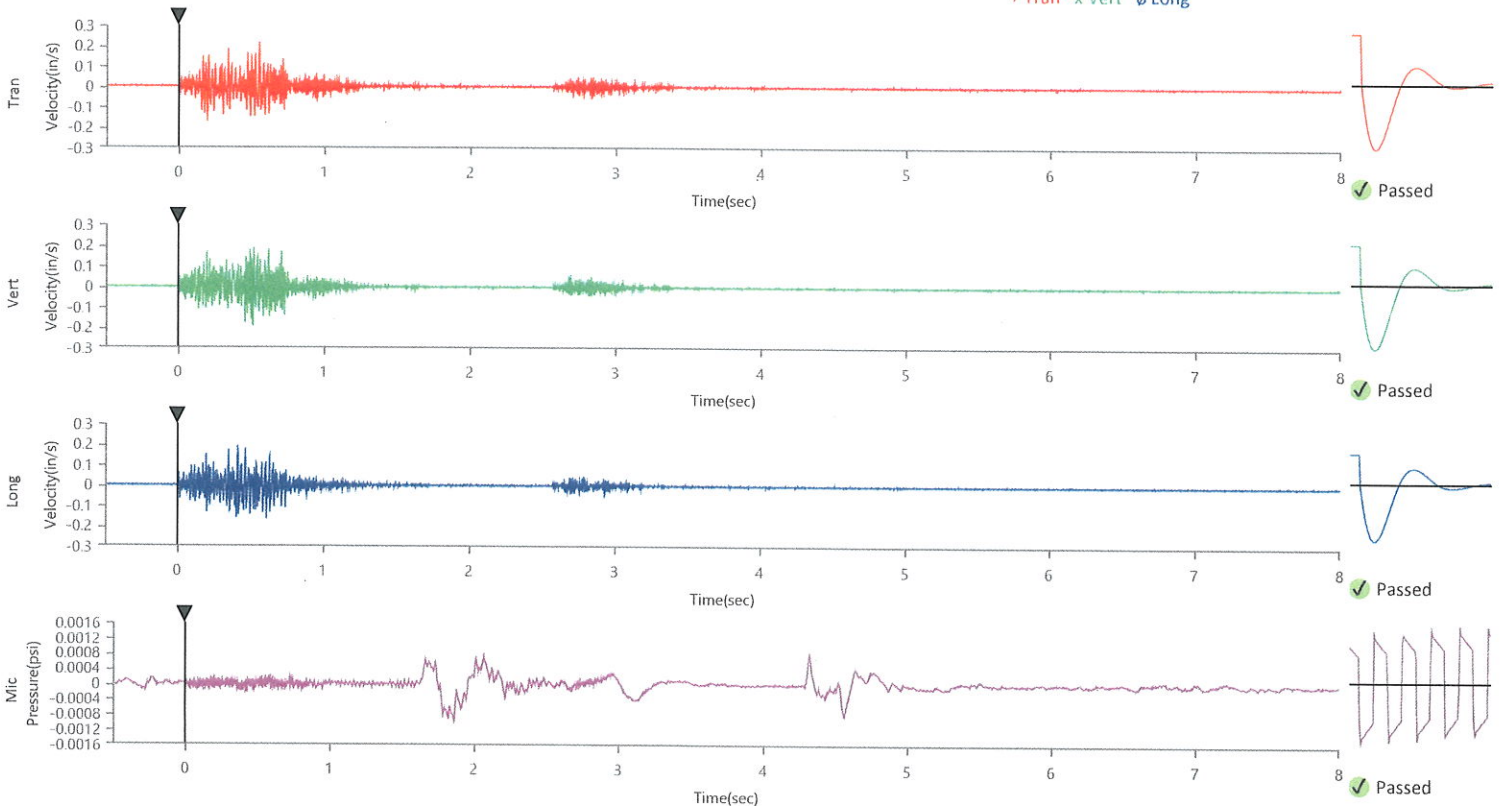
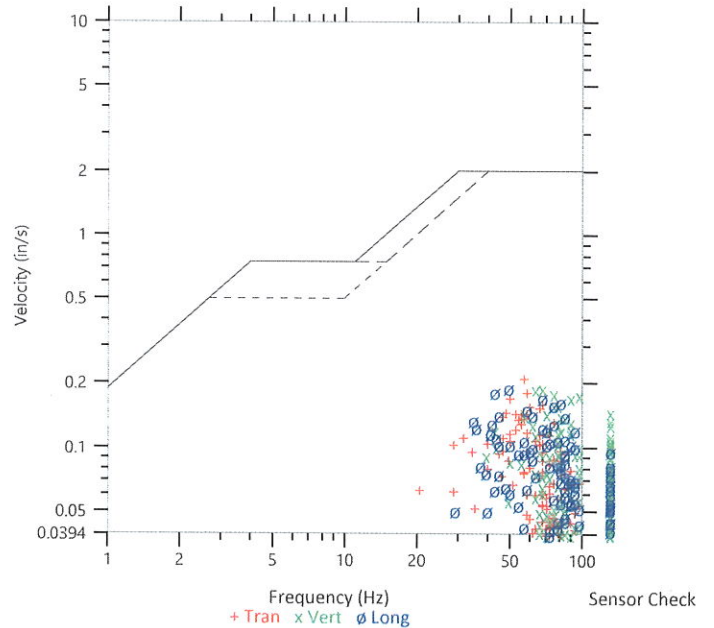
Peak Vector Sum 0.2609 in/s at 0.193 sec

**ISEE Linear Microphone**

Peak Sound Pressure Level  
 Peak Sound Pressure Level  
 Time (Relative to Trigger)  
 Zero Crossing Frequency  
 Sensor Check  
 Frequency  
 Test Amplitude

0.000974 psi  
 110.5 dB(L)  
 1.860 sec  
 2.4 Hz  
 ✓ Passed  
 20.5 Hz  
 1428 mv

USBM R18507 And OSMRE  
 Velocity versus Frequency (Zero Crossing)



Waveform Trigger Source  
 Trigger Level(s)  
 Trigger Level (Mic)  
 Pre-Trigger/Record Time  
 Sample Rate  
 Setup File Name  
 Operator

Vert at October 14, 2022 12:37:16  
 Geo 0.0200 in/s  
 Mic 0.01029 psi, 131 dB(L)  
 0.50 sec/8.0 sec (Fixed)  
 4096 sps  
 Spicewood Hwy 71 - Station 5.mmb  
 Operator

Serial Number  
 Model Number  
 Battery Level  
 Unit Calibration  
 Event File Name  
 USB Sensor Support

UM7111  
 Micromate ISEE 10.90GC  
 3.8 volts  
 July 20, 2022 by Instantel  
 UM7111\_20221014123716.IDFW  
 Disabled

**Notes**

Location Station 5  
 Client Spicewood Crushed Stone  
 Company Hwy 71 Quarry  
 General Notes IGS, Inc.

Extended Note N30.49911 W98.21538

Post Event Notes No text to be displayed.

**Geophone**

Peak Particle Velocity  
 Zero Crossing Frequency  
 Time (Relative to Trigger)  
 Peak Acceleration  
 Peak Displacement  
 Sensor Check  
 Frequency  
 Overswing Ratio

Tran	Vert	Long
0.2405 in/s	0.1679 in/s	0.1924 in/s
>100 Hz	85.3 Hz	>100 Hz
0.367 sec	0.625 sec	0.313 sec
0.477 g	0.313 g	0.398 g
0.000 in	0.000 in	0.000 in
✓ Passed	✓ Passed	✓ Passed
7.5 Hz	7.1 Hz	7.3 Hz
3.7	4.0	3.6

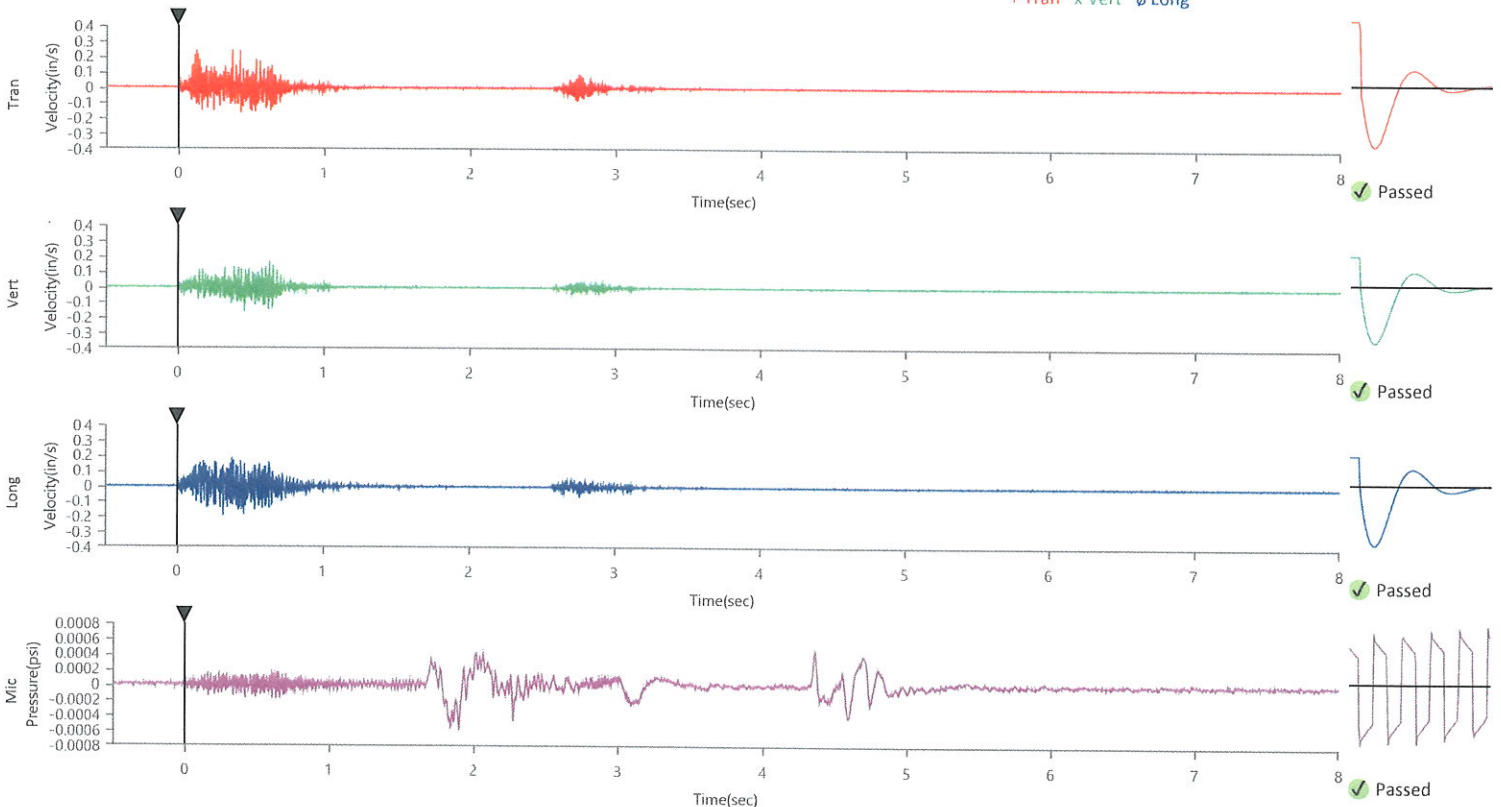
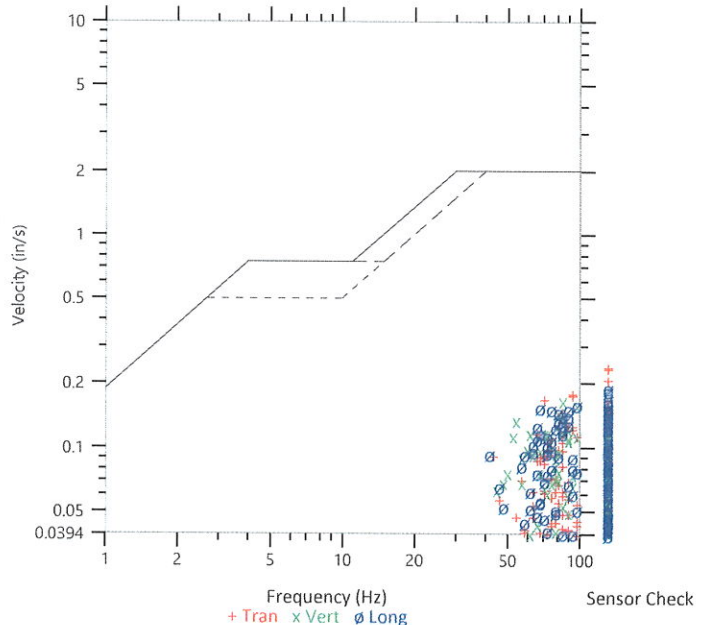
Peak Vector Sum 0.2672 in/s at 0.367 sec

**ISEE Linear Microphone**

Peak Sound Pressure Level  
 Peak Sound Pressure Level  
 Time (Relative to Trigger)  
 Zero Crossing Frequency  
 Sensor Check  
 Frequency  
 Test Amplitude

0.000565 psi  
 105.8 dB(L)  
 1.896 sec  
 3.6 Hz  
 ✓ Passed  
 20.5 Hz  
 1431 mv

USBM R18507 And OSMRE  
 Velocity versus Frequency (Zero Crossing)





Waveform Trigger Source  
 Trigger Level(s)  
 Trigger Level (Mic)  
 Pre-Trigger/Record Time  
 Sample Rate  
 Setup File Name  
 Operator

Long at October 14, 2022 12:37:16  
 Geo 0.0200 in/s  
 Mic 0.01029 psi, 131 dB(L)  
 0.50 sec/8.0 sec (Fixed)  
 4096 sps  
 Spicewood Hwy 71 - Station 6.mmb  
 Operator

Serial Number  
 Model Number  
 Battery Level  
 Unit Calibration  
 Event File Name  
 USB Sensor Support

UM7450  
 Micromate ISEE 10.90GC  
 3.8 volts  
 August 4, 2022 by InstanTel  
 UM7450\_20221014123716.IDFW  
 Disabled

**Notes**

Location Station 6  
 Client Spicewood Crushed Stone  
 Company Hwy 71 Quarry  
 General Notes IGS, Inc.

Extended Note N30.495113 W98.206539

Post Event Notes No text to be displayed.

**Geophone**

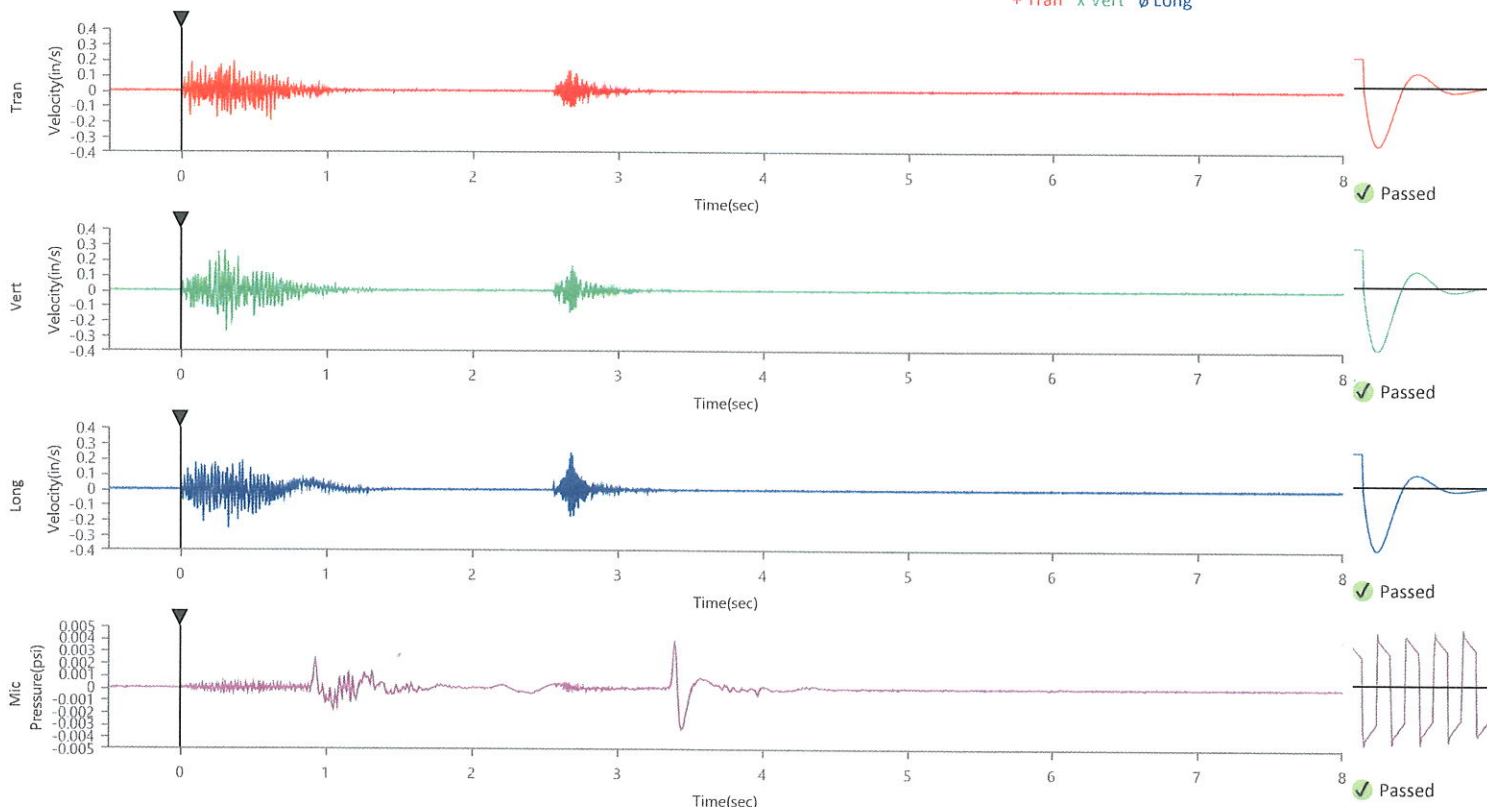
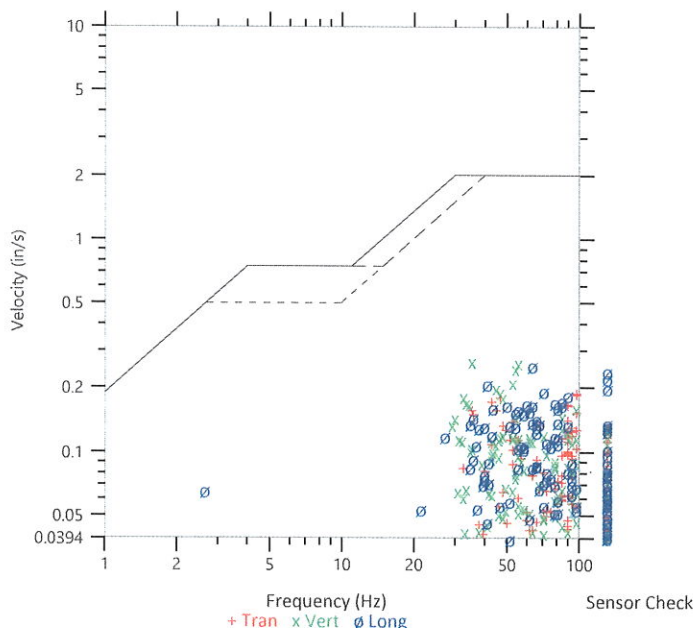
	Tran	Vert	Long
Peak Particle Velocity	0.1930 in/s	0.2712 in/s	0.2554 in/s
Zero Crossing Frequency	97.5 Hz	35.3 Hz	64.0 Hz
Time (Relative to Trigger)	0.611 sec	0.307 sec	0.324 sec
Peak Acceleration	0.336 g	0.290 g	0.375 g
Peak Displacement	0.001 in	0.001 in	0.003 in
Sensor Check	✓ Passed	✓ Passed	✓ Passed
Frequency	7.3 Hz	7.3 Hz	7.1 Hz
Overswing Ratio	4.1	3.9	5.3

Peak Vector Sum 0.3124 in/s at 0.307 sec

**ISEE Linear Microphone**

Peak Sound Pressure Level 0.003717 psi  
 Peak Sound Pressure Level 122.2 dB(L)  
 Time (Relative to Trigger) 3.395 sec  
 Zero Crossing Frequency 6.1 Hz  
 Sensor Check ✓ Passed  
 Frequency 20.5 Hz  
 Test Amplitude 1475 mv

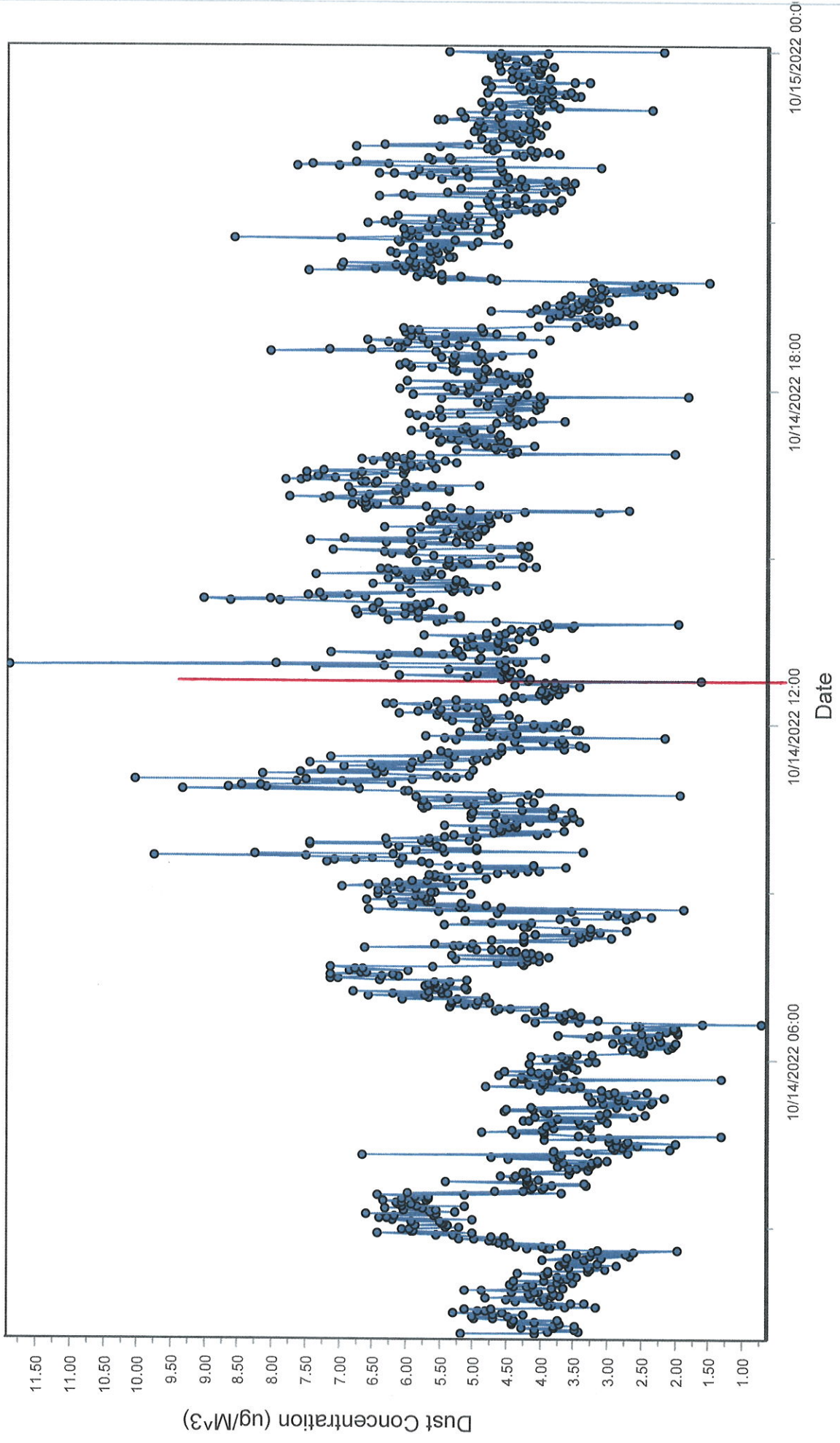
USBM RI8507 And OSMRE  
 Velocity versus Frequency (Zero Crossing)



# Spicewood Crushed Stone - Hwy 71 Quarry

## North Dust Monitor

● D100@AvgPartL



# Spicewood Crushed Stone - Hwy 71 Quarry

## South Dust Monitor

● D100@AvgPartL

