

Date/Time	Unit	Unit Location	Blast Number	Blast Location	Distance	PPV	Geo ZCF	Sound Level Microphone			
								PSPL	Peak	Time of Peak	Leq
12/20/2022 0:00	UM13917	Noise 2	19-22	Level 1	1947.8 ft	-	-	-	60.2 dB(A)	16:24:19	38.0 dB
12/20/2022 0:00	UM13907	Noise 3	19-22	Level 1	2143.3 ft	-	-	-	58.8 dB(A)	11:58:05	38.7 dB
12/20/2022 11:56	UM8046	Station 1	19-22	Level 1	1745.1 ft	0.2892 in/s	47.6 Hz	111.6 dB(L)	-	-	-
12/20/2022 11:56	UM11576	Station 2	19-22	Level 1	1725.4 ft	0.1825 in/s	78.8 Hz	113.7 dB(L)	-	-	-
12/20/2022 11:56	UM6503	Station 3	19-22	Level 1	1766.1 ft	No Trigger	-	-	-	-	-
12/20/2022 11:56	UM8003	Station 4	19-22	Level 1	1898.9 ft	0.1254 in/s	58.5 Hz	111.8 dB(L)	-	-	-
12/20/2022 11:55	UM7111	Station 5	19-22	Level 1	1950.4 ft	0.1263 in/s	>100.0 Hz	108.4 dB(L)	-	-	-
12/20/2022 11:56	UM7450	Station 6	19-22	Level 1	1225.7 ft	0.2324 in/s	60.2 Hz	119.9 dB(L)	-	-	-

Start December 20, 2022 00:00:05
Finish December 20, 2022 23:29:59
Number of Intervals/Interval 42297.25/2 sec
Sample Rate 4096 sps
Setup File Name Spicewood Hwy 71 - Noise 2.mmb
Operator Operator

Serial Number UM13917
Model Number Micromate ISEE 10.90GC
Battery Level 3.8 volts
Unit Calibration July 19, 2022 by InstanTel
Microphone Calibration UA10038, July 19, 2022 by InstanTel
Event File Name UM13917_20221220000005.IDFH
USB Sensor Support Disabled

Notes
Location Noise 2
Client Spicewood Crushed Stone
Company Hwy 71 Quarry
General Notes IGS, Inc.

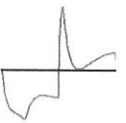
Extended Note Station 5N30.49911 W98.21538
Post Event Notes No text to be displayed.

Sound Level Microphone A-Weight Slow
LMax 60.2 dB(A)
Date Dec 20, 2022
Time 16:24:19

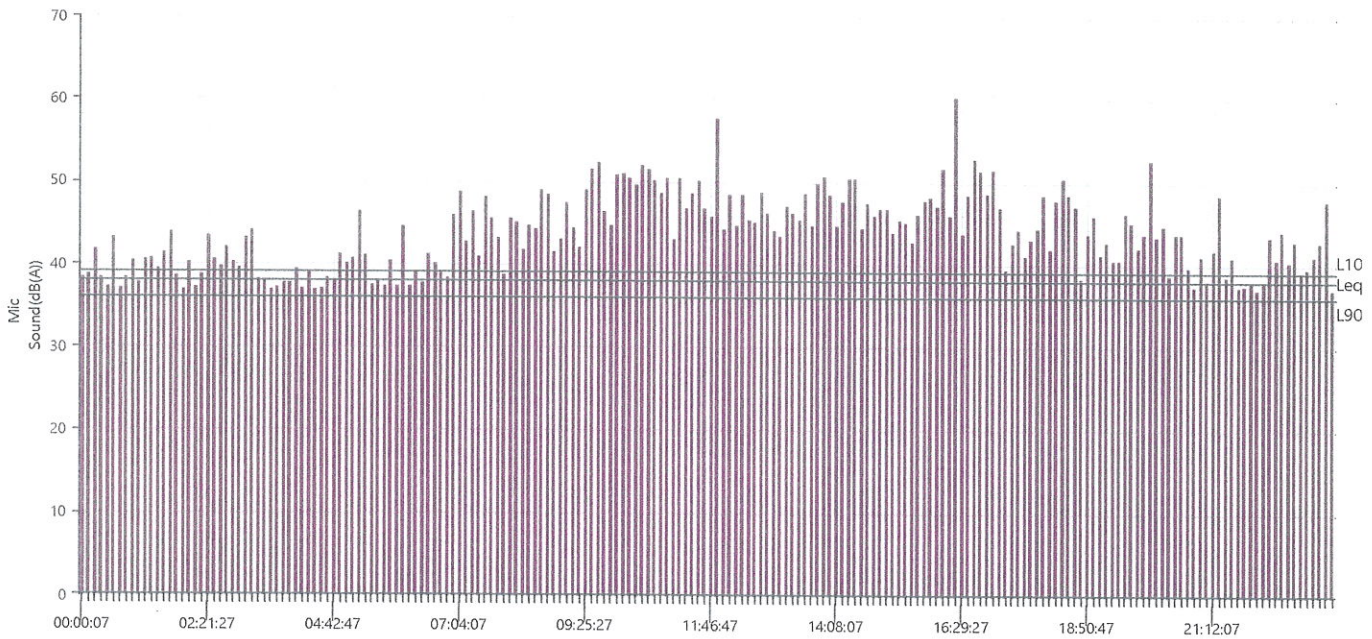
LMin	L10	L90	Leq
35.7	39	36	38.0

Sound(dB(A))
Sensor Check ✔ Passed
Test Amplitude 1099 mv

Sensor Check



✔ Passed



Start
Finish
Number of Intervals/Interval
Sample Rate
Setup File Name
Operator

December 20, 2022 00:00:05
 December 20, 2022 23:29:59
 1409.91/60 sec
 4096 sps
 Spicewood Hwy 71 - Noise 3.mmb
 Operator

Serial Number
Model Number
Battery Level
Unit Calibration
Microphone Calibration
Event File Name
USB Sensor Support

UM13907
 Micromate ISEE 10.90GC
 3.8 volts
 August 2, 2022 by Instantel
 UA10761, July 29, 2022 by Instantel
 UM13907_20221220000005.IDFH
 Disabled

Notes
Location
Client
Company
General Notes

Noise 3
 Spicewood Crushed Stone
 Hwy 71 Quarry
 IGS, Inc.

Extended Note N30.490958 W98.213495
Post Event Notes No text to be displayed.

Sound Level Microphone
LMax
Date
Time

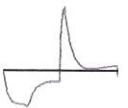
A-Weight Slow
 58.8 dB(A)
 Dec 20, 2022
 11:58:05

LMin	L10	L90	Leq
30.4	42	31	38.7

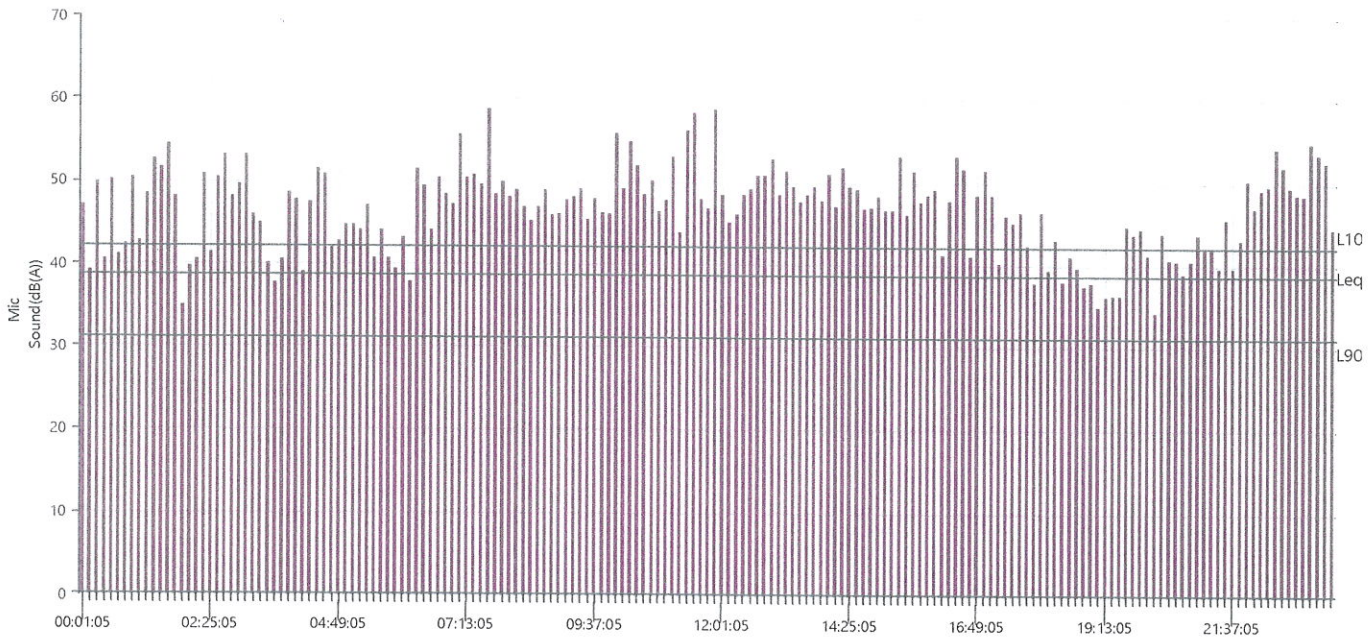
 ✓ Passed
 1073 mv

Sound(dB(A))
Sensor Check
Test Amplitude

Sensor Check



✓ Passed



Waveform Trigger Source
 Trigger Level(s)
 Trigger Level (Mic)
 Pre-Trigger/Record Time
 Sample Rate
 Setup File Name
 Operator

Vert at December 20, 2022 11:56:05
 Geo 0.0200 in/s
 Mic 0.01029 psi, 131 dB(L)
 0.50 sec/8.0 sec (Fixed)
 4096 sps
 Spicewood Hwy 71 - Station 1.mmb
 Operator

Serial Number
 Model Number
 Battery Level
 Unit Calibration
 Event File Name
 USB Sensor Support

UM8046
 Micromate ISEE 10.90GC
 3.8 volts
 May 6, 2022 by InstanTel
 UM8046_20221220115605.IDFW
 Disabled

Notes

Location Station 1
 Client Spicewood Crushed Stone
 Company Hwy 71 Quarry
 General Notes IGS, Inc.

Extended Note N30.49572 W98.21577

Post Event Notes No text to be displayed.

Geophone

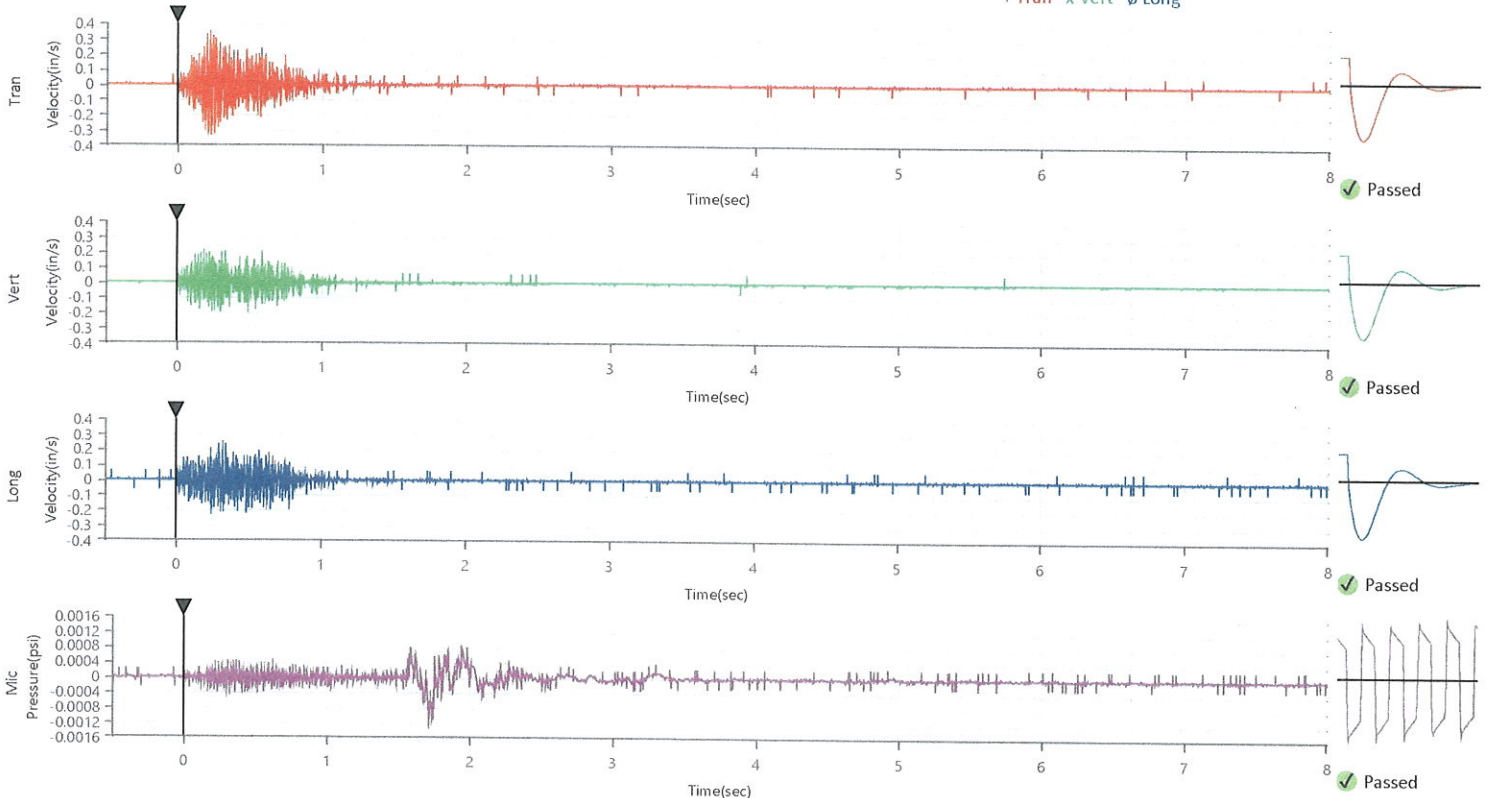
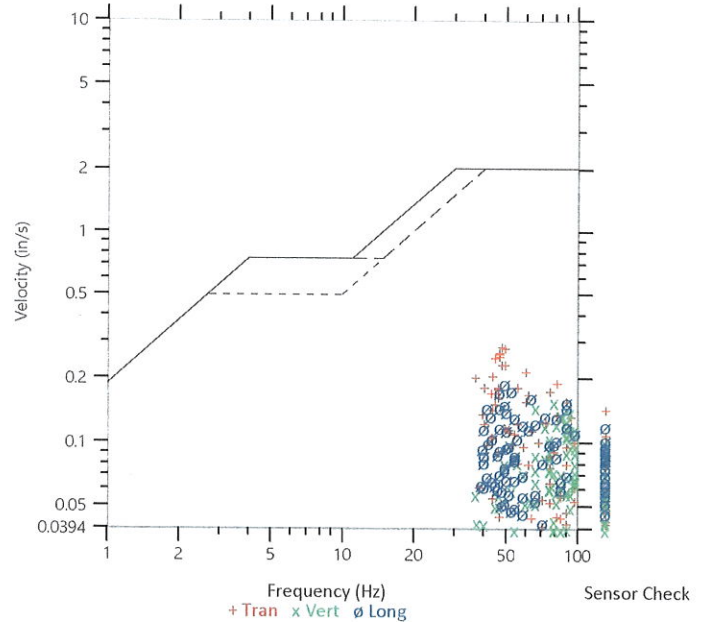
	Tran	Vert	Long
Peak Particle Velocity	0.2892 in/s	0.1570 in/s	0.1933 in/s
Zero Crossing Frequency	47.6 Hz	78.8 Hz	48.8 Hz
Time (Relative to Trigger)	0.219 sec	0.179 sec	0.316 sec
Peak Acceleration	0.267 g	0.217 g	0.296 g
Peak Displacement	0.001 in	0.000 in	0.001 in
Sensor Check	✓ Passed	✓ Passed	✓ Passed
Frequency	7.5 Hz	7.3 Hz	7.1 Hz
Overswing Ratio	4.4	4.2	4.8

Peak Vector Sum 0.3259 in/s at 0.219 sec

ISEE Linear Microphone

Peak Sound Pressure Level	0.001105 psi
Peak Sound Pressure Level	111.6 dB(L)
Time (Relative to Trigger)	1.712 sec
Zero Crossing Frequency	5.5 Hz
Sensor Check	✓ Passed
Frequency	19.7 Hz
Test Amplitude	1479 mv

USBM RI8507 And OSMRE
 Velocity versus Frequency (Zero Crossing)



Waveform Trigger Source
 Trigger Level(s)
 Trigger Level (Mic)
 Pre-Trigger/Record Time
 Sample Rate
 Setup File Name
 Operator

Tran at December 20, 2022 11:56:35
 Geo 0.0200 in/s
 Mic 0.01029 psi, 131 dB(L)
 0.50 sec/8.0 sec (Fixed)
 4096 sps
 Spicewood Hwy 71 - Station 2.mmb
 Operator

Serial Number
 Model Number
 Battery Level
 Unit Calibration
 Event File Name
 USB Sensor Support

UM11576
 Micromate ISEE 10.90GC
 3.8 volts
 September 21, 2022 by InstanTel
 UM11576_20221220115635.IDFW
 Disabled

Notes

Location Station 2
 Client Spicewood Crushed Stone
 Company Hwy 71
 General Notes IGS, Inc

Extended Note N30.49650 W21572

Post Event Notes No text to be displayed.

Geophone

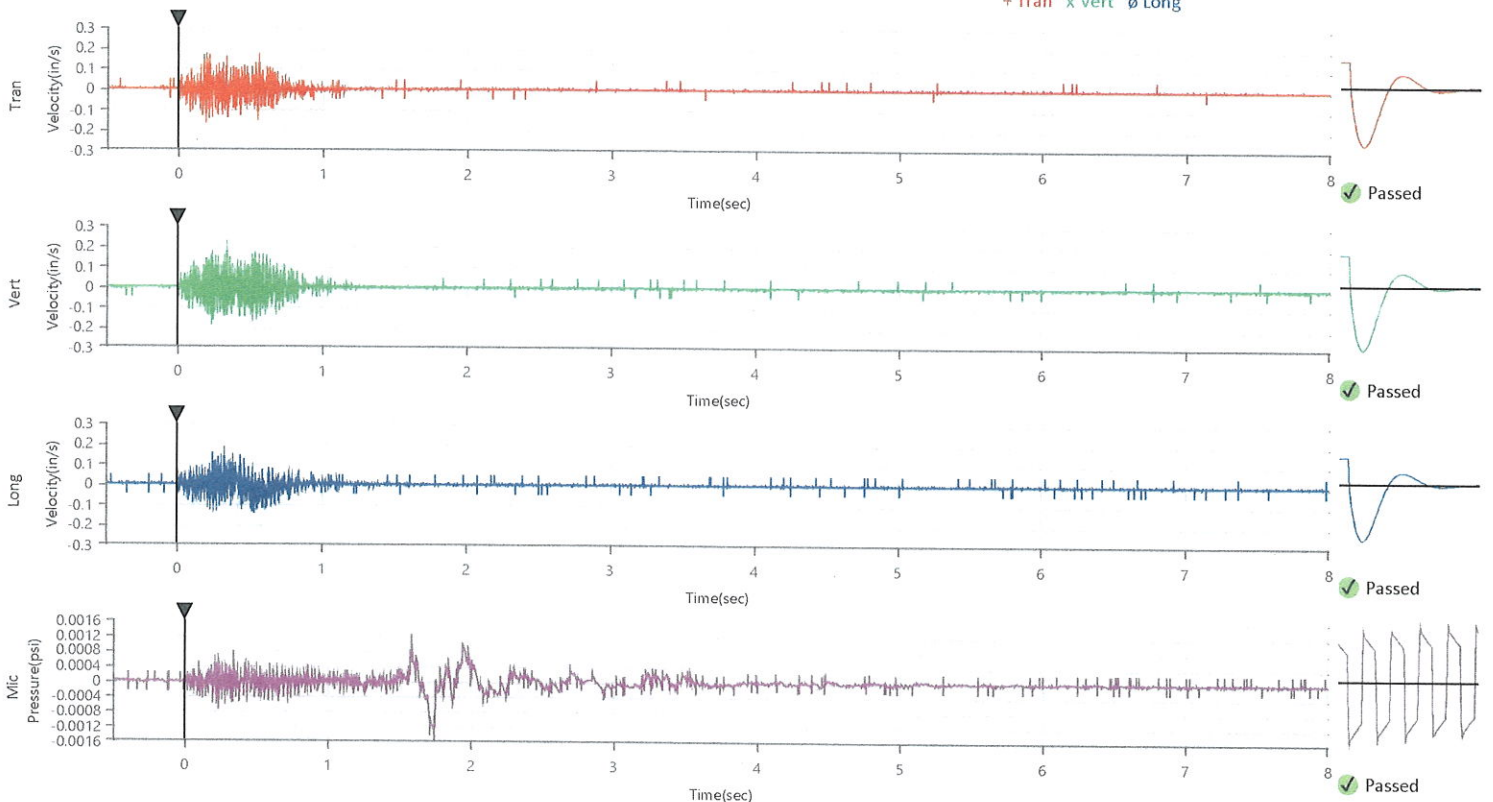
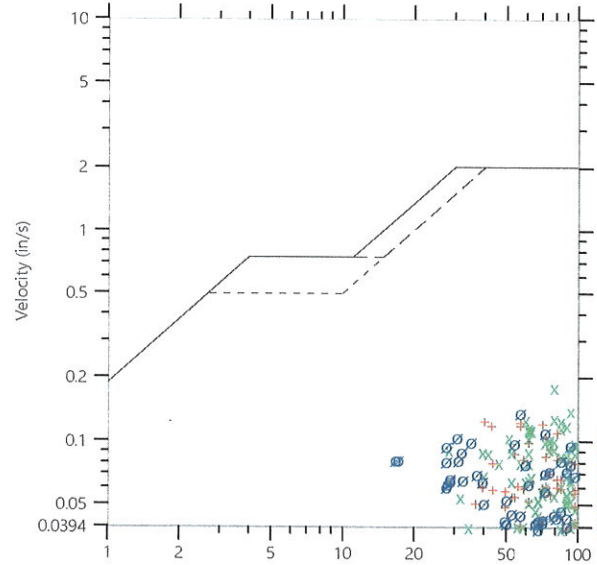
	Tran	Vert	Long
Peak Particle Velocity	0.1282 in/s	0.1825 in/s	0.1403 in/s
Zero Crossing Frequency	40.2 Hz	78.8 Hz	56.9 Hz
Time (Relative to Trigger)	0.557 sec	0.334 sec	0.322 sec
Peak Acceleration	0.227 g	0.237 g	0.191 g
Peak Displacement	0.000 in	0.000 in	0.001 in
Sensor Check	✓ Passed	✓ Passed	✓ Passed
Frequency	7.3 Hz	7.3 Hz	7.1 Hz
Overswing Ratio	4.3	4.6	4.9

Peak Vector Sum 0.1919 in/s at 0.334 sec

ISEE Linear Microphone

Peak Sound Pressure Level	0.001400 psi
Peak Sound Pressure Level	113.7 dB(L)
Time (Relative to Trigger)	1.740 sec
Zero Crossing Frequency	4.0 Hz
Sensor Check	✓ Passed
Frequency	20.5 Hz
Test Amplitude	1515 mv

USBM RI8507 And OSMRE
 Velocity versus Frequency (Zero Crossing)



Waveform Trigger Source
 Trigger Level(s)
 Trigger Level (Mic)
 Pre-Trigger/Record Time
 Sample Rate
 Setup File Name
 Operator

Vert at December 20, 2022 11:56:03
 Geo 0.0200 in/s
 Mic 0.01029 psi, 131 dB(L)
 0.50 sec/8.0 sec (Fixed)
 4096 sps
 Spicewood Hwy 71 - Station 4.mmb
 Operator

Serial Number
 Model Number
 Battery Level
 Unit Calibration
 Event File Name
 USB Sensor Support

UM8003
 Micromate ISEE 10.90GC
 3.8 volts
 July 20, 2022 by InstanTel
 UM8003_20221220115603.IDFW
 Disabled

Notes

Location Station 4
 Client Spicewood Crushed Stone
 Company Hwy 71 Quarry
 General Notes IGS, Inc.

Extended Note N30.49821 W98.21578

Post Event Notes No text to be displayed.

Geophone

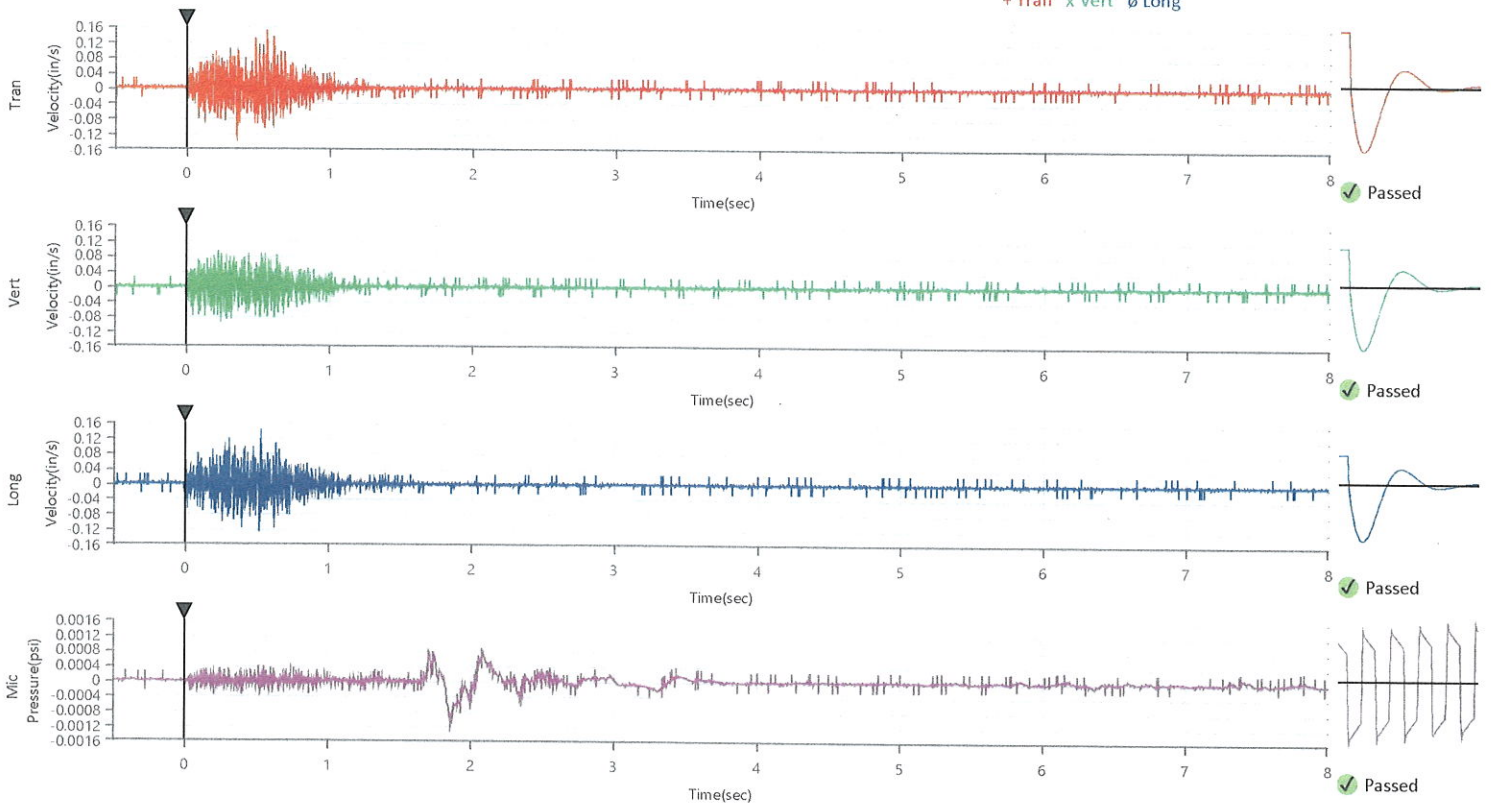
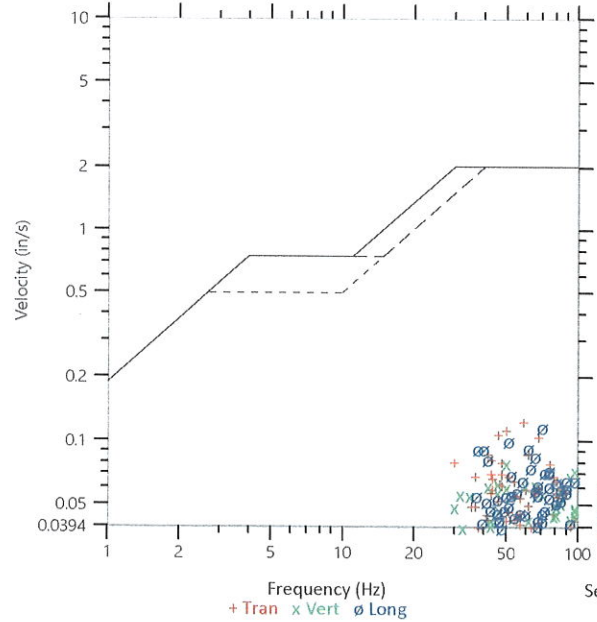
	Tran	Vert	Long
Peak Particle Velocity	0.1254 in/s	0.0794 in/s	0.1185 in/s
Zero Crossing Frequency	58.5 Hz	50.0 Hz	70.6 Hz
Time (Relative to Trigger)	0.560 sec	0.518 sec	0.528 sec
Peak Acceleration	0.132 g	0.128 g	0.142 g
Peak Displacement	0.000 in	0.000 in	0.000 in
Sensor Check	✓ Passed	✓ Passed	✓ Passed
Frequency	7.3 Hz	7.3 Hz	7.3 Hz
Overswing Ratio	3.5	3.9	3.6

Peak Vector Sum 0.1475 in/s at 0.528 sec

ISEE Linear Microphone

Peak Sound Pressure Level	0.001125 psi
Peak Sound Pressure Level	111.8 dB(L)
Time (Relative to Trigger)	1.857 sec
Zero Crossing Frequency	2.3 Hz
Sensor Check	✓ Passed
Frequency	20.5 Hz
Test Amplitude	1494 mv

USBM RI8507 And OSMRE
 Velocity versus Frequency (Zero Crossing)



Waveform Trigger Source
 Trigger Level(s)
 Trigger Level (Mic)
 Pre-Trigger/Record Time
 Sample Rate
 Setup File Name
 Operator

Vert at December 20, 2022 11:55:56
 Geo 0.0200 in/s
 Mic 0.01029 psi, 131 dB(L)
 0.50 sec/8.0 sec (Fixed)
 4096 sps
 Spicewood Hwy 71 - Station 5.mmb
 Operator

Serial Number
 Model Number
 Battery Level
 Unit Calibration
 Event File Name
 USB Sensor Support

UM7111
 Micromate ISEE 10.90GC
 3.8 volts
 July 20, 2022 by InstanTel
 UM7111_20221220115556.IDFW
 Disabled

Notes

Location Station 5
 Client Spicewood Crushed Stone
 Company Hwy 71 Quarry
 General Notes IGS, Inc.

Extended Note N30.49911 W98.21538

Post Event Notes No text to be displayed.

Geophone

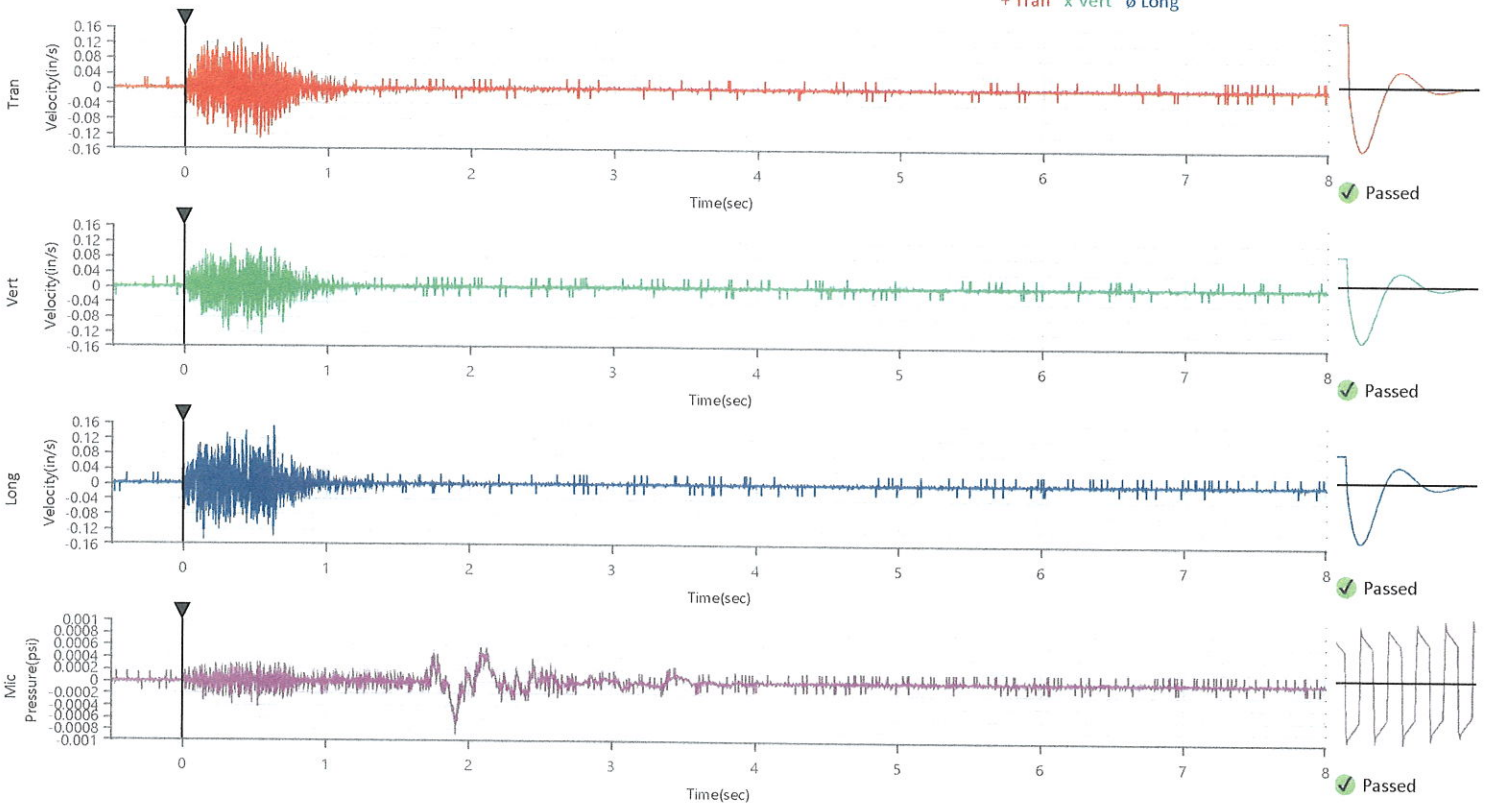
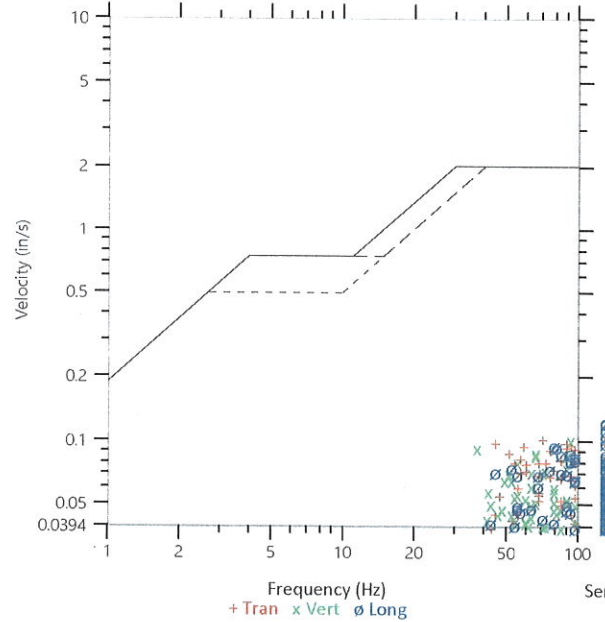
	Tran	Vert	Long
Peak Particle Velocity	0.1074 in/s	0.1030 in/s	0.1263 in/s
Zero Crossing Frequency	>100 Hz	93.1 Hz	>100 Hz
Time (Relative to Trigger)	0.530 sec	0.543 sec	0.637 sec
Peak Acceleration	0.197 g	0.161 g	0.250 g
Peak Displacement	0.000 in	0.000 in	0.000 in
Sensor Check	✓ Passed	✓ Passed	✓ Passed
Frequency	7.3 Hz	7.1 Hz	7.3 Hz
Overswing Ratio	4.0	4.1	3.7

Peak Vector Sum 0.1575 in/s at 0.637 sec

ISEE Linear Microphone

Peak Sound Pressure Level	0.000761 psi
Peak Sound Pressure Level	108.4 dB(L)
Time (Relative to Trigger)	1.906 sec
Zero Crossing Frequency	2.9 Hz
Sensor Check	✓ Passed
Frequency	20.5 Hz
Test Amplitude	1559 mv

USBM RI8507 And OSMRE
 Velocity versus Frequency (Zero Crossing)



Waveform Trigger Source
 Trigger Level(s)
 Trigger Level (Mic)
 Pre-Trigger/Record Time
 Sample Rate
 Setup File Name
 Operator

Vert at December 20, 2022 11:56:03
 Geo 0.0200 in/s
 Mic 0.01029 psi, 131 dB(L)
 0.50 sec/8.0 sec (Fixed)
 4096 sps
 Spicewood Hwy 71 - Station 6.mmb
 Operator

Serial Number
 Model Number
 Battery Level
 Unit Calibration
 Event File Name
 USB Sensor Support

UM7450
 Micromate ISEE 10.90GC
 3.8 volts
 August 4, 2022 by InstanTel
 UM7450_20221220115603.IDFW
 Disabled

Notes

Location Station 6
 Client Spicewood Crushed Stone
 Company Hwy 71 Quarry
 General Notes IGS, Inc.

Extended Note N30.495113 W98.206539

Post Event Notes No text to be displayed.

Geophone

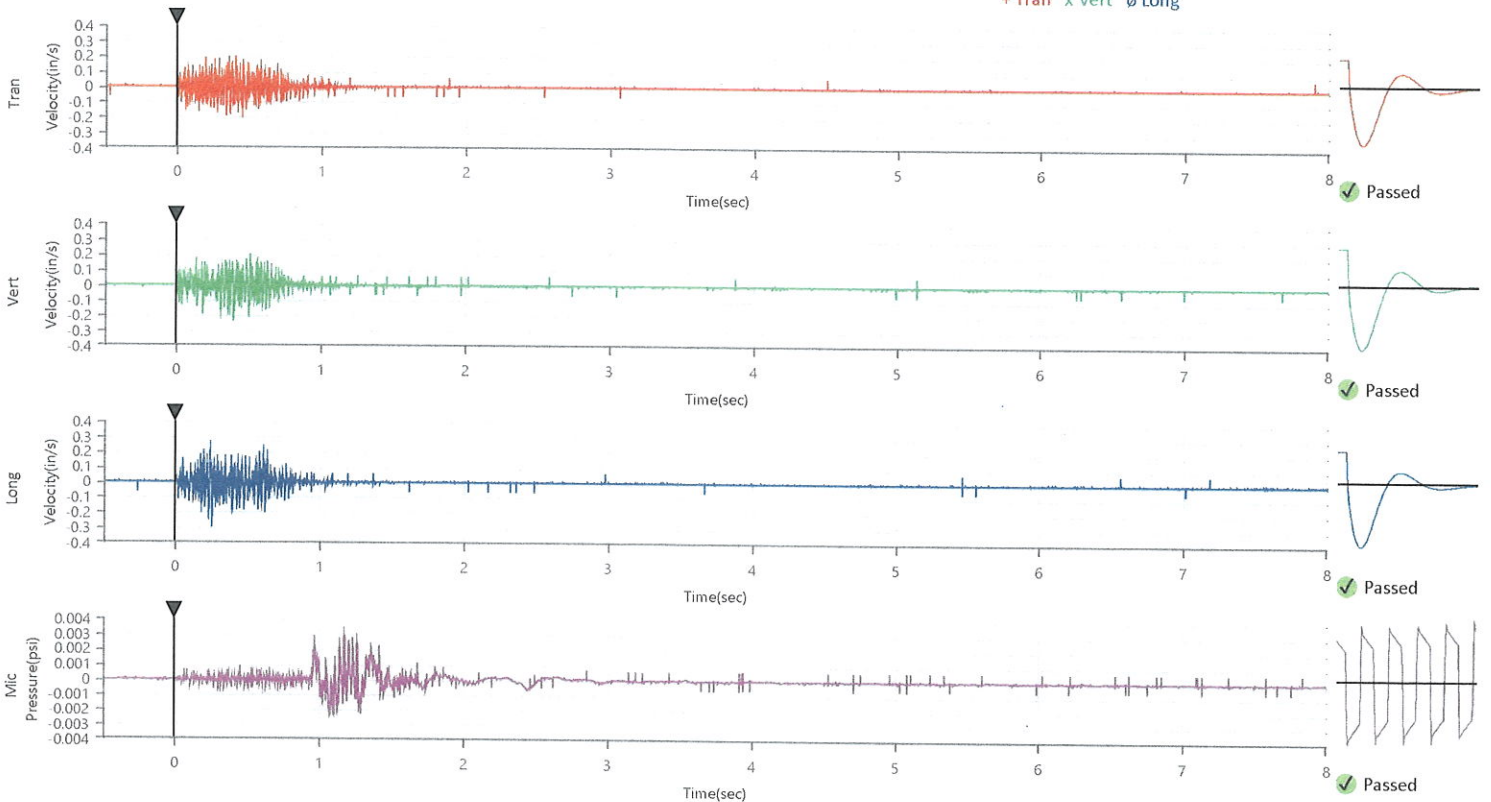
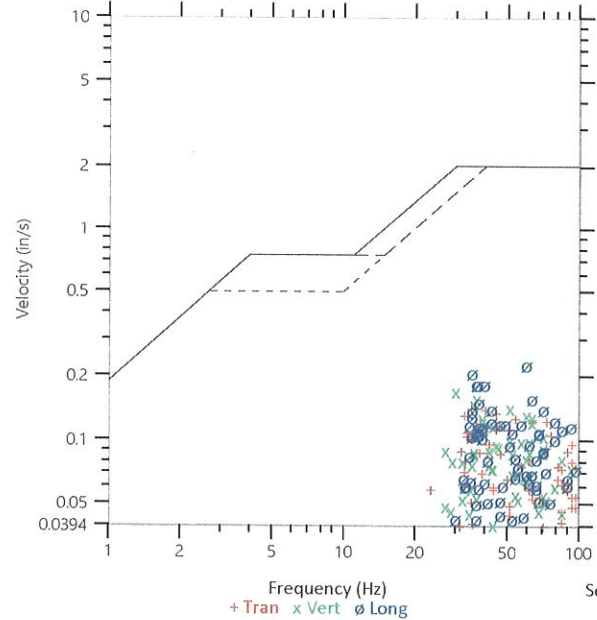
	Tran	Vert	Long
Peak Particle Velocity	0.1443 in/s	0.1732 in/s	0.2324 in/s
Zero Crossing Frequency	34.7 Hz	30.1 Hz	60.2 Hz
Time (Relative to Trigger)	0.447 sec	0.397 sec	0.251 sec
Peak Acceleration	0.158 g	0.148 g	0.283 g
Peak Displacement	0.001 in	0.001 in	0.001 in
Sensor Check	✓ Passed	✓ Passed	✓ Passed
Frequency	7.3 Hz	7.3 Hz	7.1 Hz
Overswing Ratio	4.2	4.1	5.5

Peak Vector Sum 0.2483 in/s at 0.250 sec

ISEE Linear Microphone

Peak Sound Pressure Level	0.002871 psi
Peak Sound Pressure Level	119.9 dB(L)
Time (Relative to Trigger)	1.173 sec
Zero Crossing Frequency	37.9 Hz
Sensor Check	✓ Passed
Frequency	20.5 Hz
Test Amplitude	1561 mv

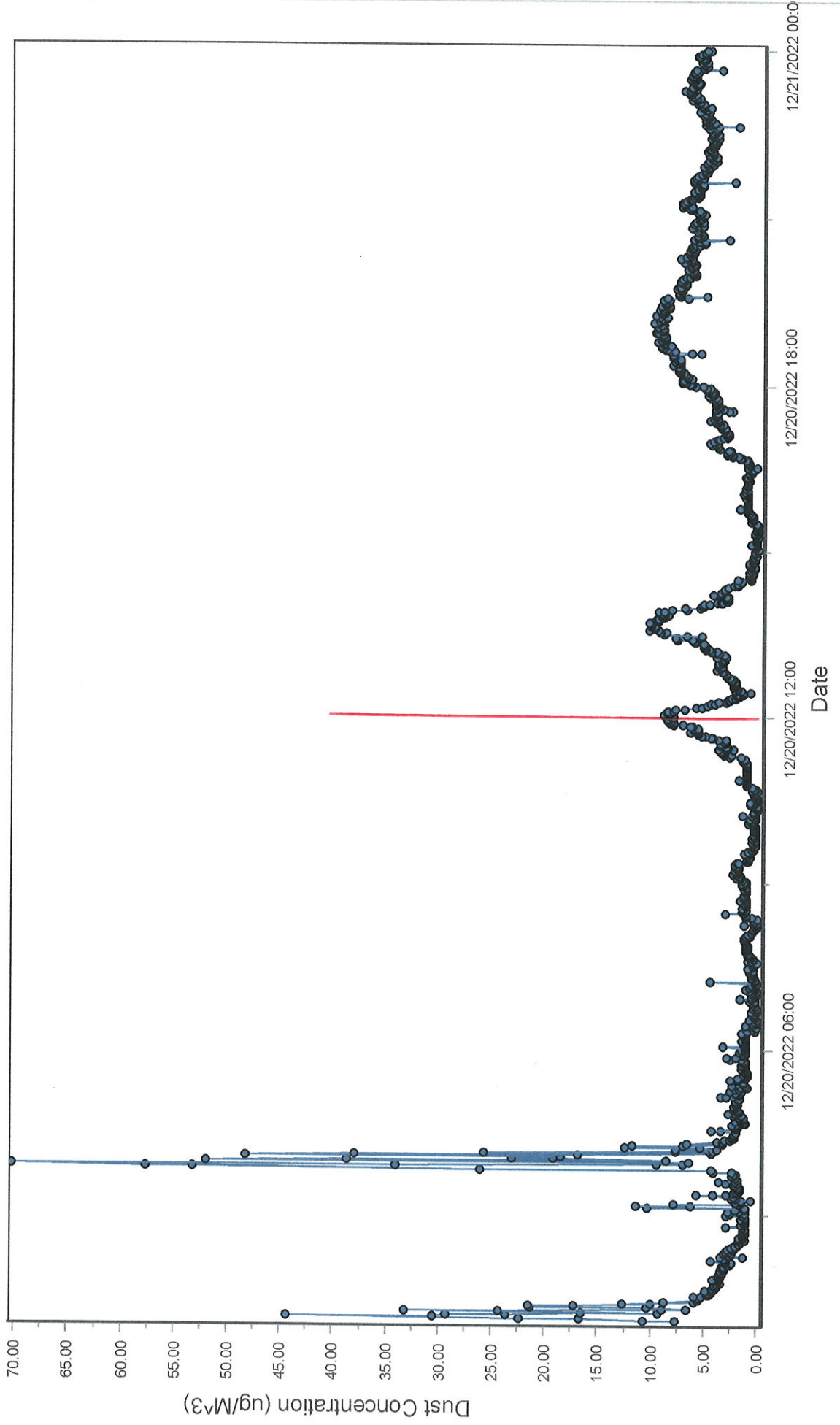
USBM R18507 And OSMRE
 Velocity versus Frequency (Zero Crossing)



Spicewood Crushed Stone - Hwy 71 Quarry

North Dust Monitor

● D100@AvgPartL



Spicewood Crushed Stone - Hwy 71 Quarry

South Dust Monitor

◆ D100@AvgPartL

