

Waveform Trigger Source
Trigger Level(s)
Trigger Level (Mic)
Pre-Trigger/Record Time
Sample Rate
Setup File Name
Operator

Vert at January 9, 2024 11:09:52
 Geo 0.0200 in/s
 Mic 0.01029 psi, 131 dB(L)
 0.50 sec/8.0 sec (Fixed)
 4096 sps
 Spicewood Hwy 71 - Station 1.mmb
 Operator

Serial Number
Model Number
Battery Level
Unit Calibration
Event File Name
USB Sensor Support

UM20119
 Micromate ISEE 10.90GC
 3.8 volts
 April 24, 2023 by Instantel
 UM20119_20240109110952.IDFW
 Disabled

Notes

Location Station 1
 Client Spicewood Crushed Stone
 Company Hwy 71 Quarry
 General Notes IGS, Inc.

Extended Note N30.49572 W98.21577

Post Event Notes No text to be displayed.

Geophone

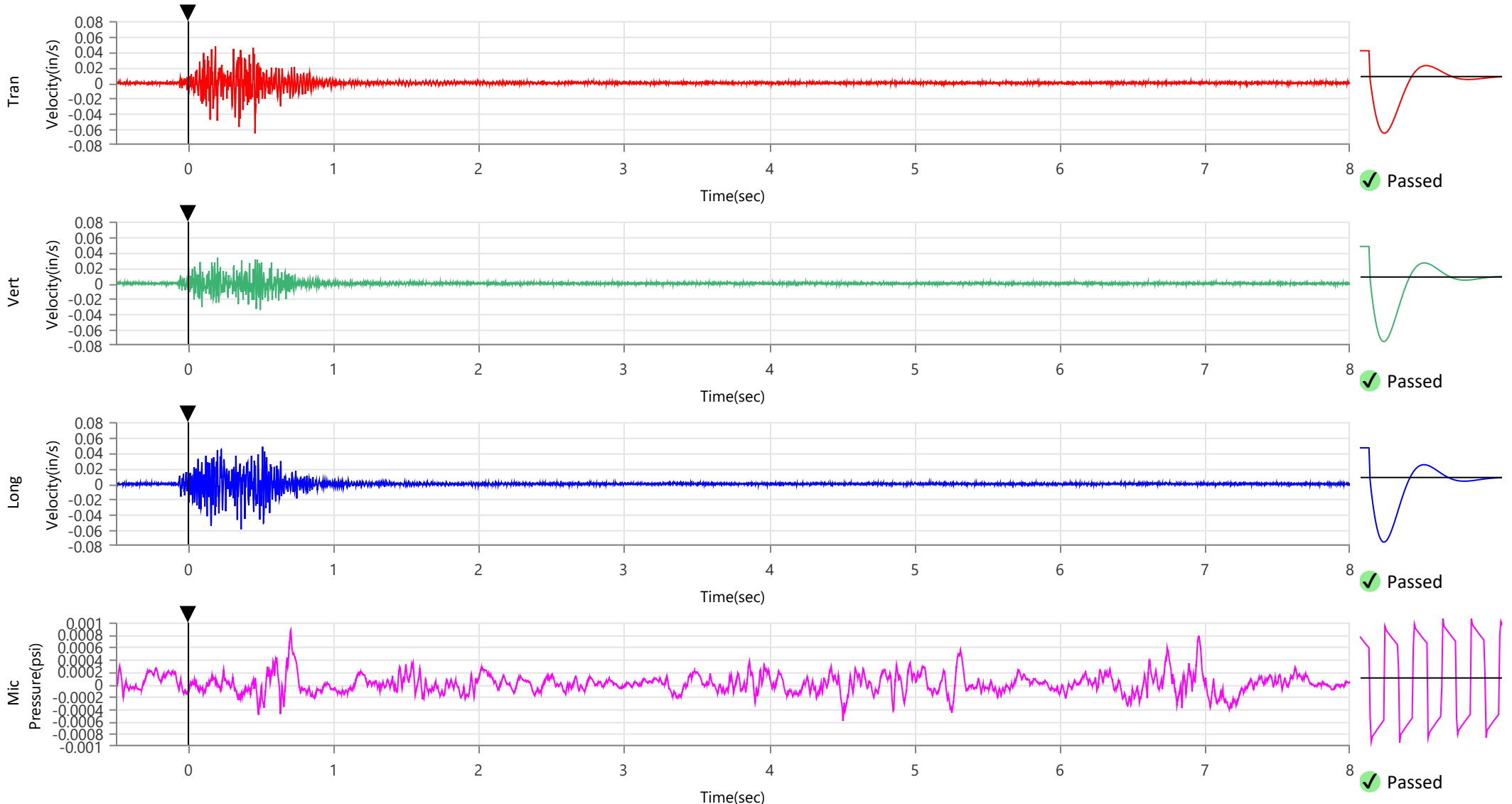
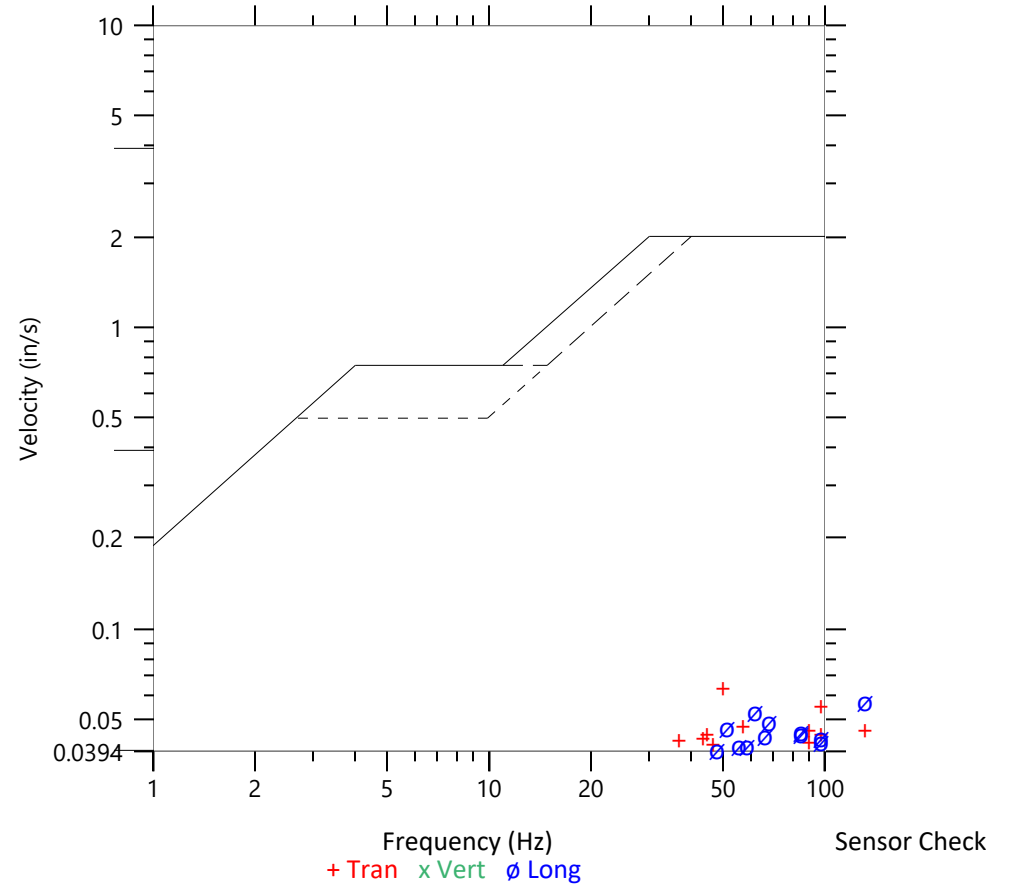
	Tran	Vert	Long
Peak Particle Velocity	0.0652 in/s	0.0344 in/s	0.0586 in/s
Zero Crossing Frequency	51.2 Hz	66.1 Hz	>100 Hz
Time (Relative to Trigger)	0.458 sec	0.495 sec	0.363 sec
Peak Acceleration	0.099 g	0.056 g	0.092 g
Peak Displacement	0.000 in	0.000 in	0.000 in
Sensor Check	✓ Passed	✓ Passed	✓ Passed
Frequency	6.9 Hz	7.3 Hz	7.1 Hz
Overswing Ratio	5.1	4.5	5.0

Peak Vector Sum 0.0670 in/s at 0.459 sec

ISEE Linear Microphone

Peak Sound Pressure Level 0.000878 psi
 Peak Sound Pressure Level 109.6 dB(L)
 Time (Relative to Trigger) 0.706 sec
 Zero Crossing Frequency 5.3 Hz
 Sensor Check ✓ Passed
 Frequency 19.7 Hz
 Test Amplitude 1546 mv

USBM R18507 And OSMRE
 Velocity versus Frequency (Zero Crossing)



Waveform Trigger Source
Trigger Level(s)
Trigger Level (Mic)
Pre-Trigger/Record Time
Sample Rate
Setup File Name
Operator

Vert at January 9, 2024 11:09:52
 Geo 0.0200 in/s
 Mic 0.01029 psi, 131 dB(L)
 0.50 sec/8.0 sec (Fixed)
 4096 sps
 Spicewood Hwy 71 - Station 1.mmb
 Operator

Serial Number
Model Number
Battery Level
Unit Calibration
Event File Name
USB Sensor Support

UM20119
 Micromate ISEE 10.90GC
 3.8 volts
 April 24, 2023 by Instantel
 UM20119_20240109110952.IDFW
 Disabled

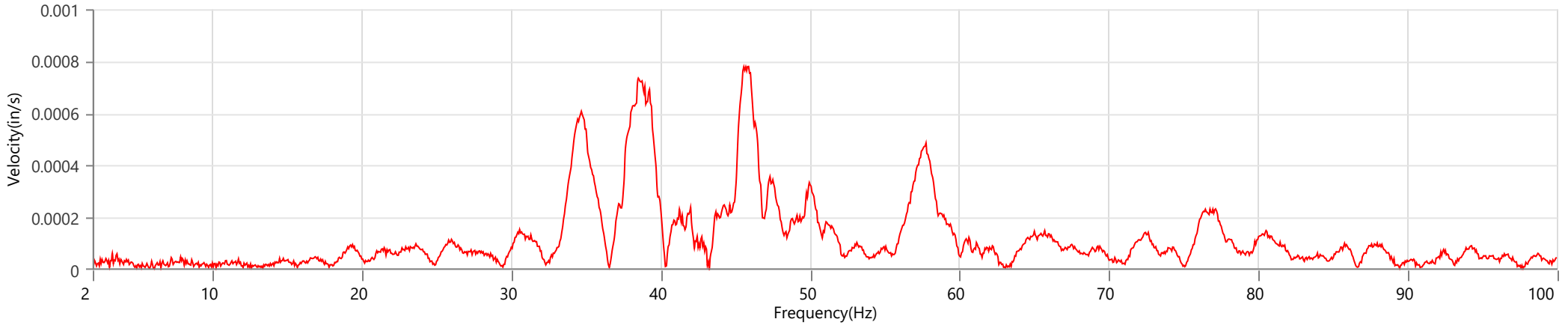
Notes

Location Station 1
 Client Spicewood Crushed Stone
 Company Hwy 71 Quarry
 General Notes IGS, Inc.

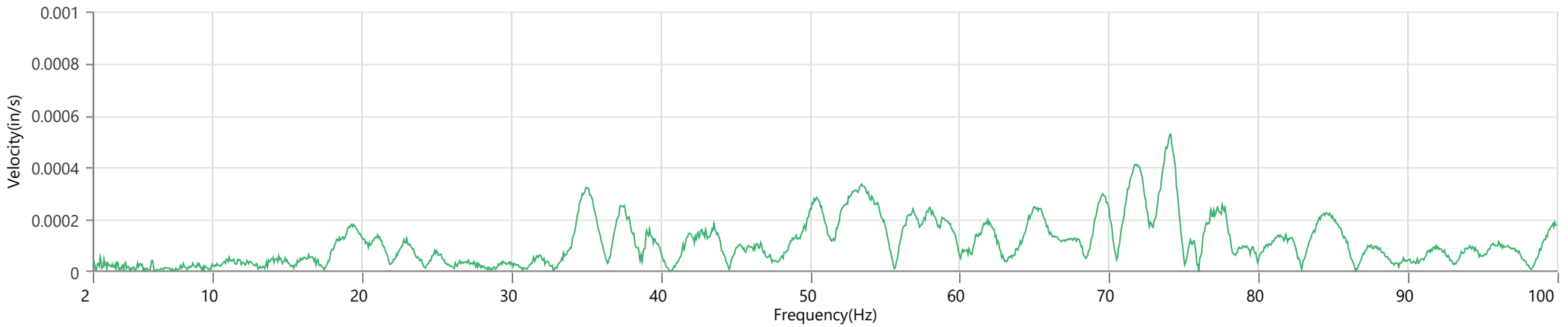
Extended Note N30.49572 W98.21577

Post Event Notes No text to be displayed.

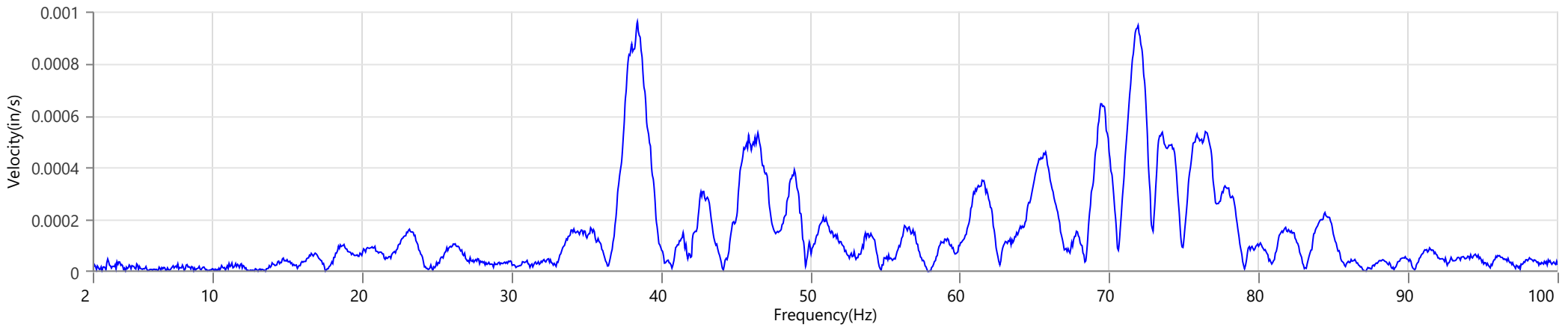
Tran - Dominant Frequency 45.9 Hz, Amplitude 0.0008 in/s (Peak Particle Velocity: 0.0652 in/s)



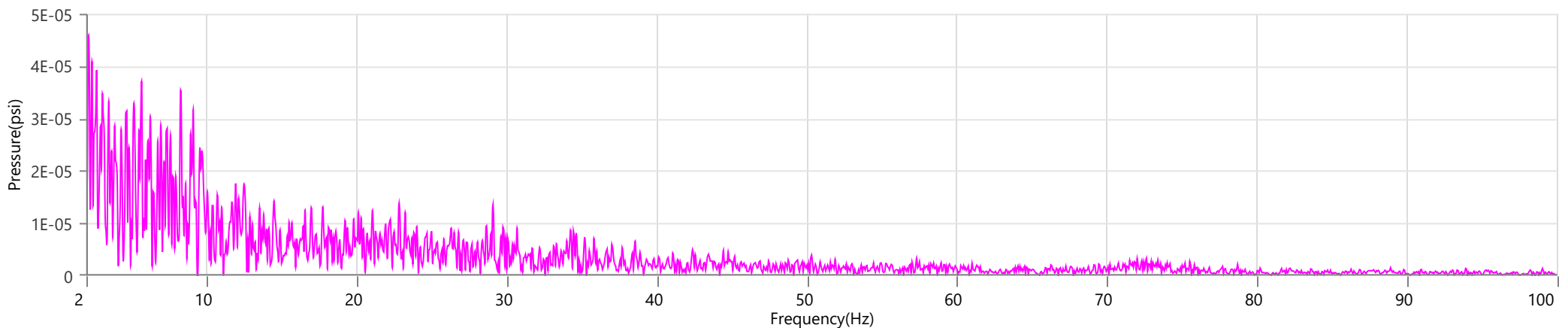
Vert - Dominant Frequency 74.1 Hz, Amplitude 0.0005 in/s (Peak Particle Velocity: 0.0344 in/s)



Long - Dominant Frequency 38.4 Hz, Amplitude 0.0010 in/s (Peak Particle Velocity: 0.0586 in/s)



Mic - Dominant Frequency 2.1 Hz, Amplitude 0.00004 psi (Peak Sound Pressure Level: 0.000878 psi)



Waveform Trigger Source
Trigger Level(s)
Trigger Level (Mic)
Pre-Trigger/Record Time
Sample Rate
Setup File Name
Operator

Vert at January 9, 2024 11:09:52
 Geo 0.0200 in/s
 Mic 0.01029 psi, 131 dB(L)
 0.50 sec/8.0 sec (Fixed)
 4096 sps
 Spicewood Hwy 71 - Station 2.mmb
 Operator

Serial Number
Model Number
Battery Level
Unit Calibration
Event File Name
USB Sensor Support

UM7306
 Micromate ISEE 10.90GC
 3.8 volts
 August 18, 2023 by Instantel
 UM7306_20240109110952.IDFW
 Disabled

Notes

Location Station 2
 Client Spicewood Crushed Stone
 Company Hwy 71
 General Notes IGS, Inc

Extended Note N30.49650 W21572

Post Event Notes No text to be displayed.

Geophone

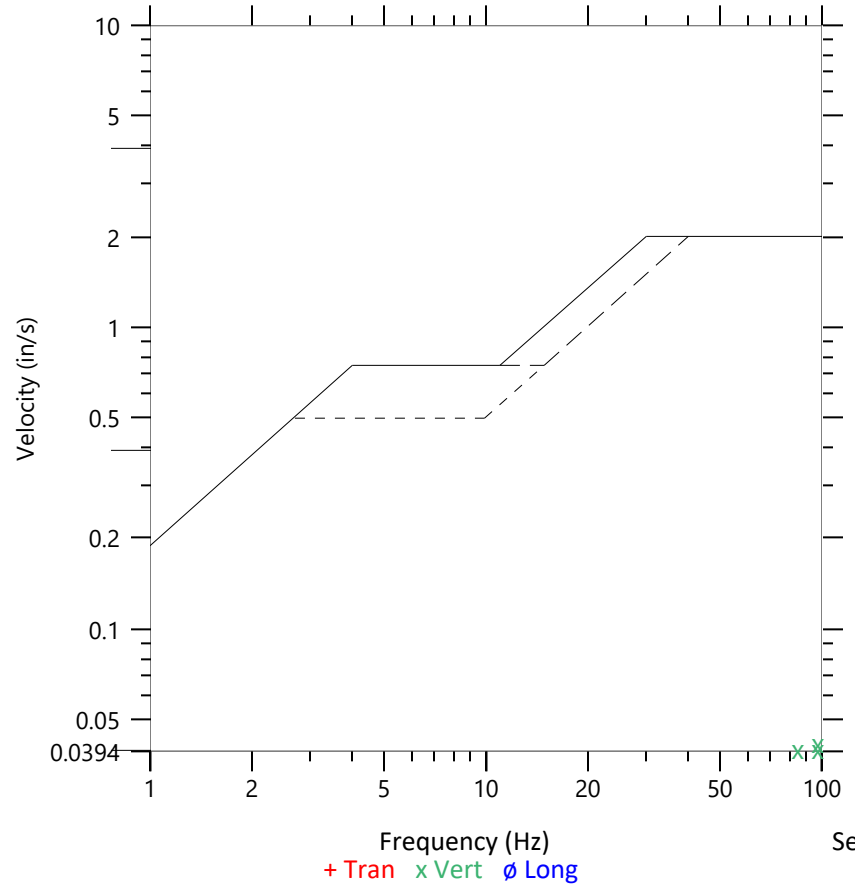
	Tran	Vert	Long
Peak Particle Velocity	0.0223 in/s	0.0422 in/s	0.0338 in/s
Zero Crossing Frequency	>100 Hz	97.5 Hz	75.9 Hz
Time (Relative to Trigger)	0.413 sec	0.444 sec	0.457 sec
Peak Acceleration	0.043 g	0.076 g	0.049 g
Peak Displacement	0.000 in	0.000 in	0.000 in
Sensor Check	✓ Passed	✓ Passed	✓ Passed
Frequency	7.1 Hz	7.3 Hz	7.7 Hz
Overswing Ratio	3.6	3.2	3.2

Peak Vector Sum 0.0439 in/s at 0.438 sec

ISEE Linear Microphone

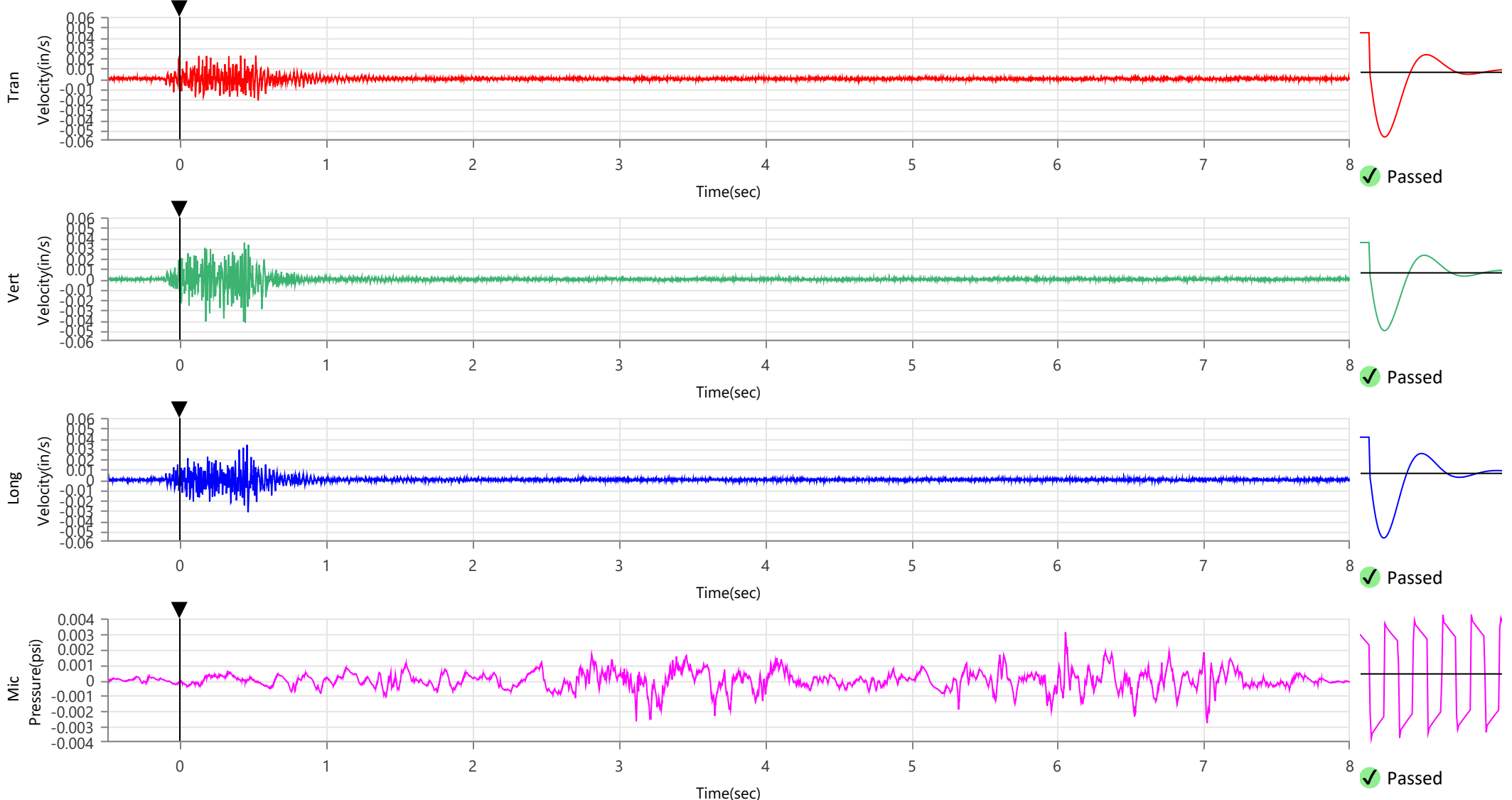
Peak Sound Pressure Level 0.003117 psi
 Peak Sound Pressure Level 120.6 dB(L)
 Time (Relative to Trigger) 6.055 sec
 Zero Crossing Frequency 15.4 Hz
 Sensor Check ✓ Passed
 Frequency 19.7 Hz
 Test Amplitude 1552 mv

USBM R18507 And OSMRE
 Velocity versus Frequency (Zero Crossing)



Sensor Check

+ Tran x Vert ø Long



Waveform Trigger Source
Trigger Level(s)
Trigger Level (Mic)
Pre-Trigger/Record Time
Sample Rate
Setup File Name
Operator

Vert at January 9, 2024 11:09:52
 Geo 0.0200 in/s
 Mic 0.01029 psi, 131 dB(L)
 0.50 sec/8.0 sec (Fixed)
 4096 sps
 Spicewood Hwy 71 - Station 2.mmb
 Operator

Serial Number
Model Number
Battery Level
Unit Calibration
Event File Name
USB Sensor Support

UM7306
 Micromate ISEE 10.90GC
 3.8 volts
 August 18, 2023 by Instantel
 UM7306_20240109110952.IDFW
 Disabled

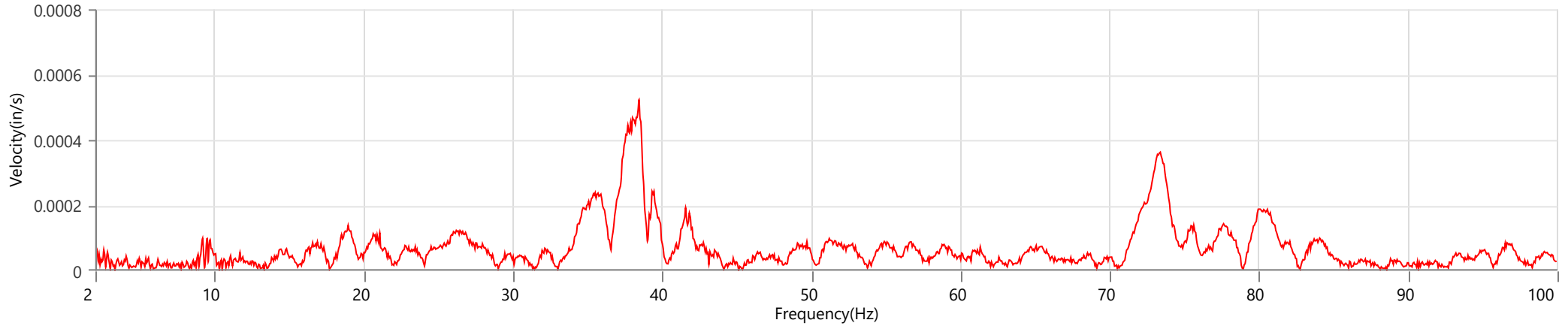
Notes

Location Station 2
 Client Spicewood Crushed Stone
 Company Hwy 71
 General Notes IGS, Inc

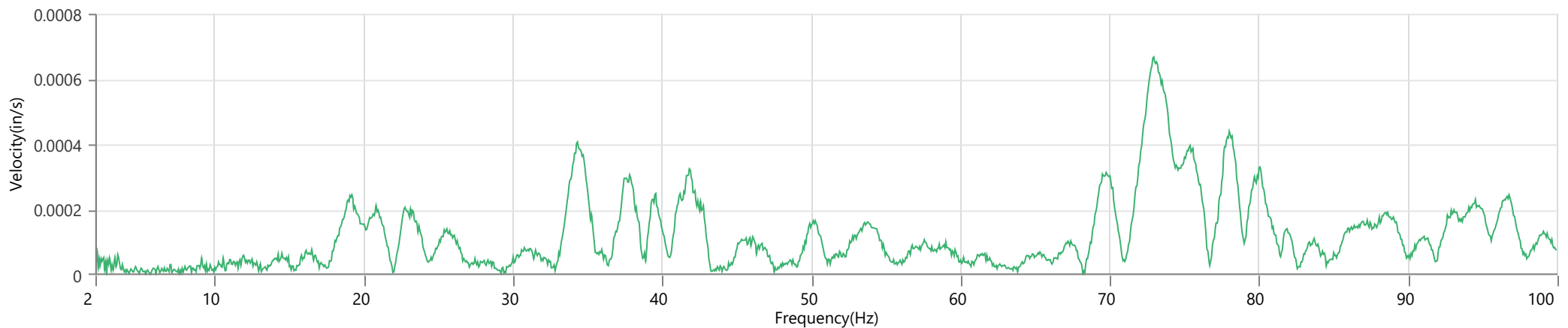
Extended Note N30.49650 W21572

Post Event Notes No text to be displayed.

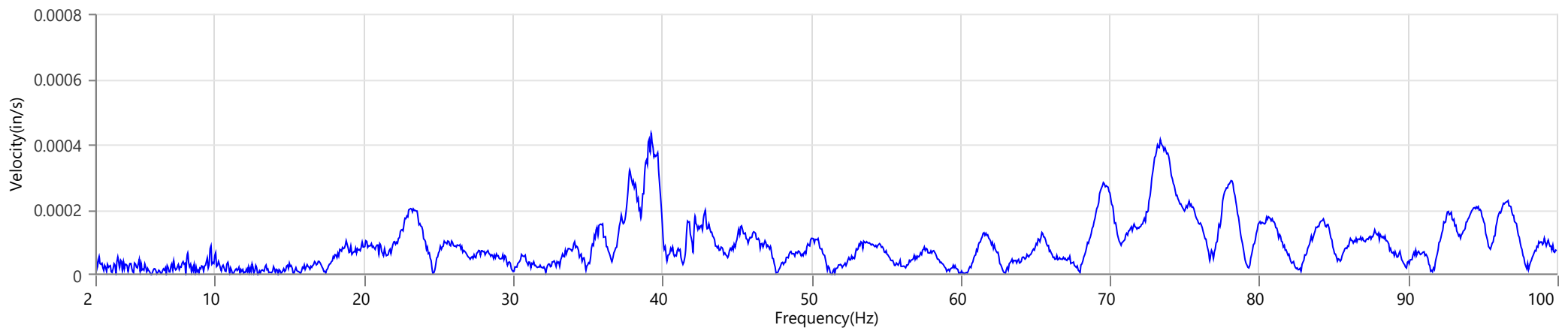
Tran - Dominant Frequency 38.4 Hz, Amplitude 0.0005 in/s (Peak Particle Velocity: 0.0223 in/s)



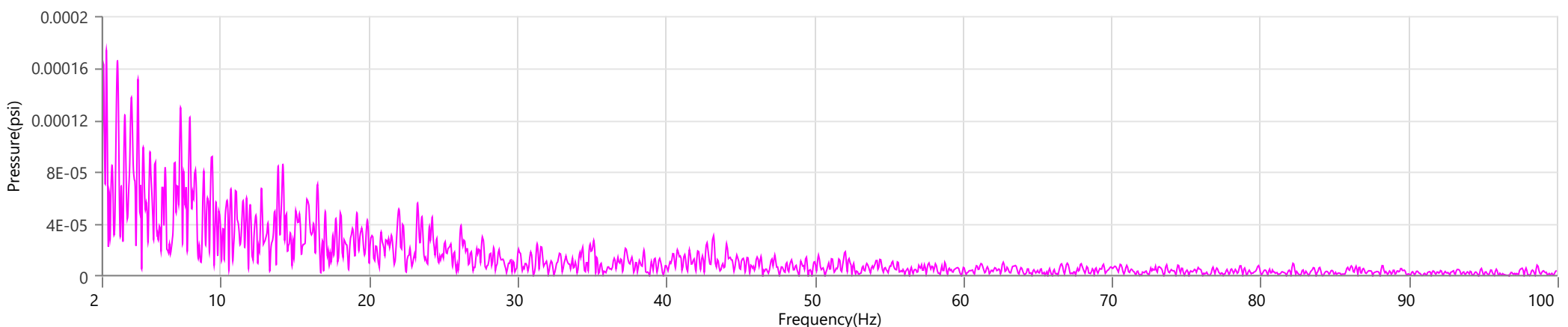
Vert - Dominant Frequency 72.9 Hz, Amplitude 0.0007 in/s (Peak Particle Velocity: 0.0422 in/s)



Long - Dominant Frequency 39.2 Hz, Amplitude 0.0004 in/s (Peak Particle Velocity: 0.0338 in/s)



Mic - Dominant Frequency 2.3 Hz, Amplitude 0.00017 psi (Peak Sound Pressure Level: 0.003117 psi)



Waveform Trigger Source
Trigger Level(s)
Trigger Level (Mic)
Pre-Trigger/Record Time
Sample Rate
Setup File Name
Operator

Vert at January 9, 2024 11:09:52
 Geo 0.0200 in/s
 Mic 0.01029 psi, 131 dB(L)
 0.50 sec/8.0 sec (Fixed)
 4096 sps
 Spicewood Hwy 71 - Station 3.mmb
 Operator

Serial Number
Model Number
Battery Level
Unit Calibration
Event File Name
USB Sensor Support

UM20082
 Micromate ISEE 10.90GC
 3.8 volts
 May 19, 2023 by Instantel
 UM20082_20240109110952.IDFW
 Disabled

Notes

Location Station 3
 Client Spicewood Crushed Stone
 Company Hwy 71 Quarry
 General Notes IGS, Inc.

Extended Note N30.49742 W98.21566

Post Event Notes No text to be displayed.

Geophone

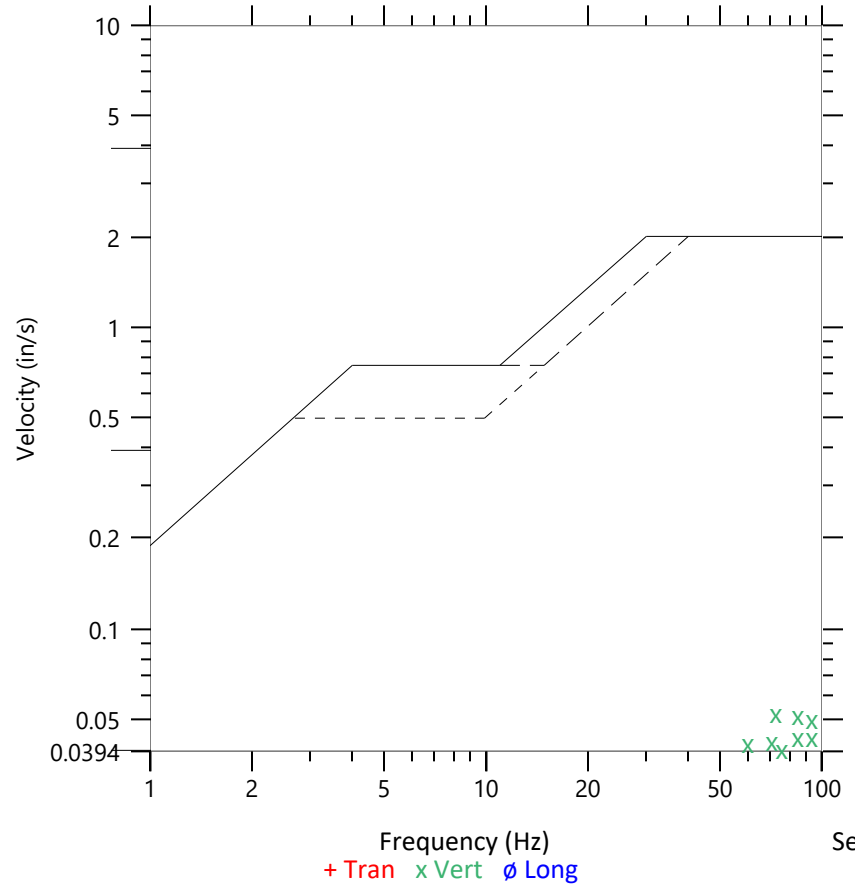
	Tran	Vert	Long
Peak Particle Velocity	0.0375 in/s	0.0537 in/s	0.0375 in/s
Zero Crossing Frequency	48.8 Hz	73.1 Hz	68.3 Hz
Time (Relative to Trigger)	0.204 sec	0.337 sec	0.422 sec
Peak Acceleration	0.059 g	0.099 g	0.066 g
Peak Displacement	0.000 in	0.000 in	0.000 in
Sensor Check	✓ Passed	✓ Passed	✓ Passed
Frequency	7.3 Hz	7.5 Hz	7.3 Hz
Overswing Ratio	4.4	4.2	4.3

Peak Vector Sum 0.0567 in/s at 0.337 sec

ISEE Linear Microphone

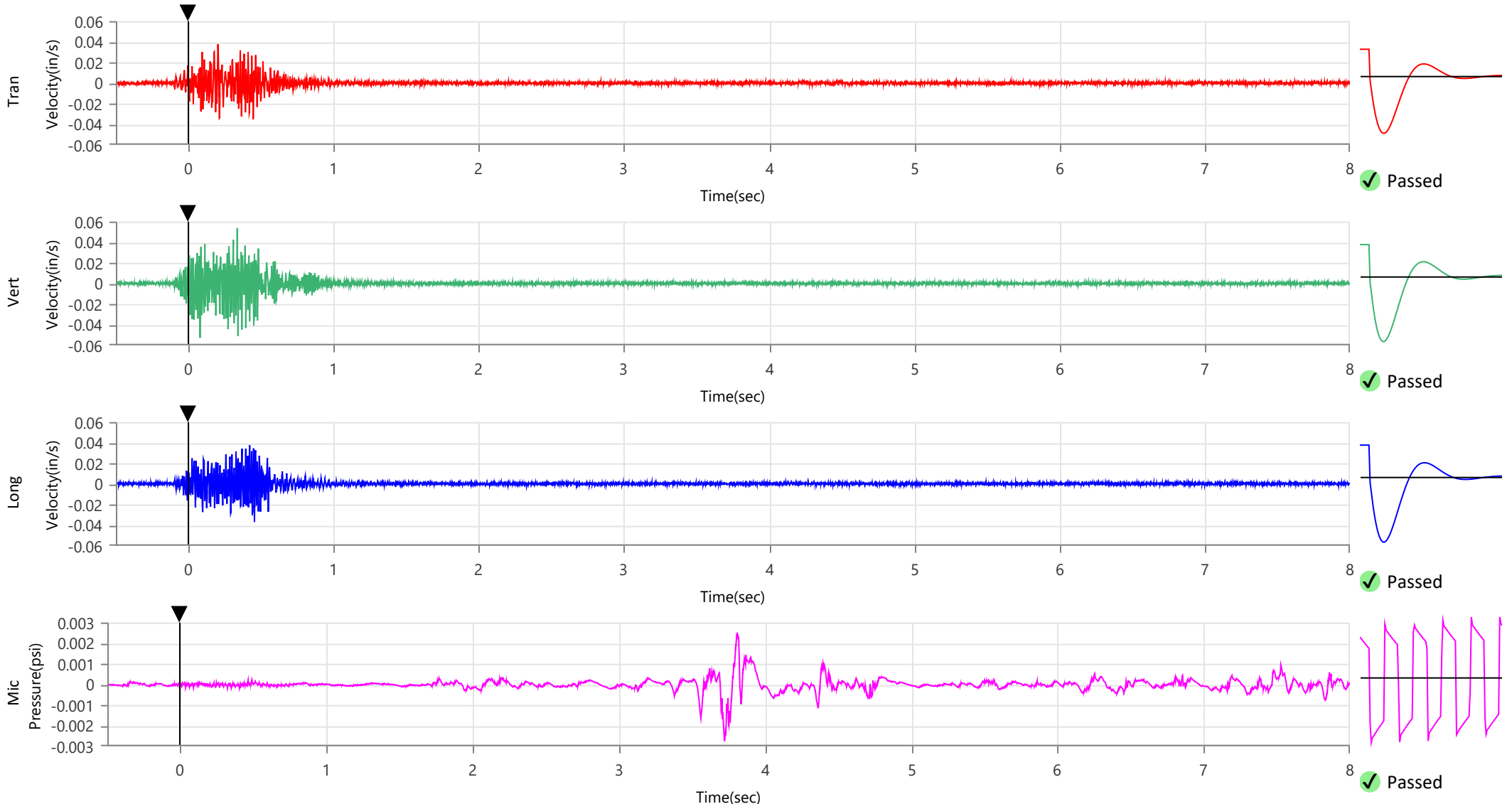
Peak Sound Pressure Level 0.002660 psi
 Peak Sound Pressure Level 119.2 dB(L)
 Time (Relative to Trigger) 3.724 sec
 Zero Crossing Frequency 5.9 Hz
 Sensor Check ✓ Passed
 Frequency 20.5 Hz
 Test Amplitude 1608 mv

USBM R18507 And OSMRE
 Velocity versus Frequency (Zero Crossing)



Sensor Check

+ Tran x Vert ø Long



Waveform Trigger Source
Trigger Level(s)
Trigger Level (Mic)
Pre-Trigger/Record Time
Sample Rate
Setup File Name
Operator

Vert at January 9, 2024 11:09:52
 Geo 0.0200 in/s
 Mic 0.01029 psi, 131 dB(L)
 0.50 sec/8.0 sec (Fixed)
 4096 sps
 Spicewood Hwy 71 - Station 3.mmb
 Operator

Serial Number
Model Number
Battery Level
Unit Calibration
Event File Name
USB Sensor Support

UM20082
 Micromate ISEE 10.90GC
 3.8 volts
 May 19, 2023 by InstanTEL
 UM20082_20240109110952.IDFW
 Disabled

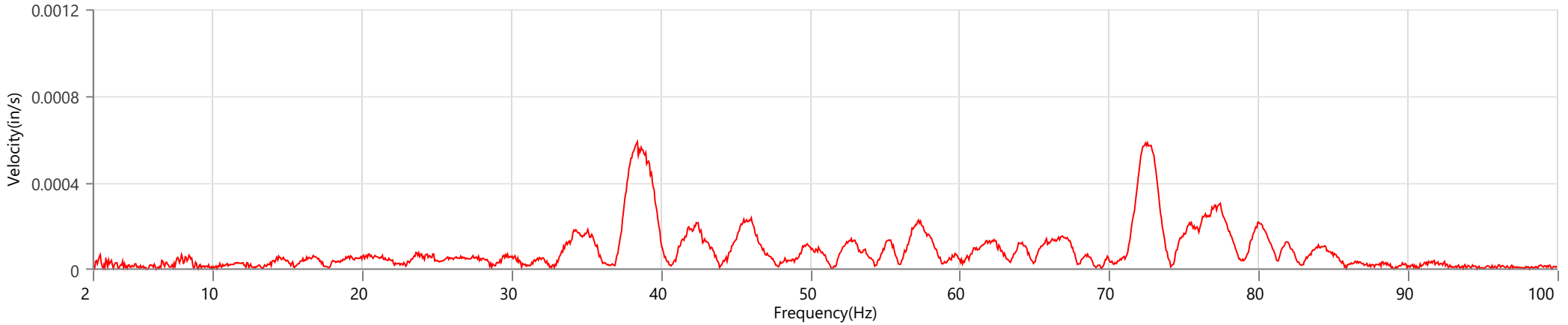
Notes

Location Station 3
 Client Spicewood Crushed Stone
 Company Hwy 71 Quarry
 General Notes IGS, Inc.

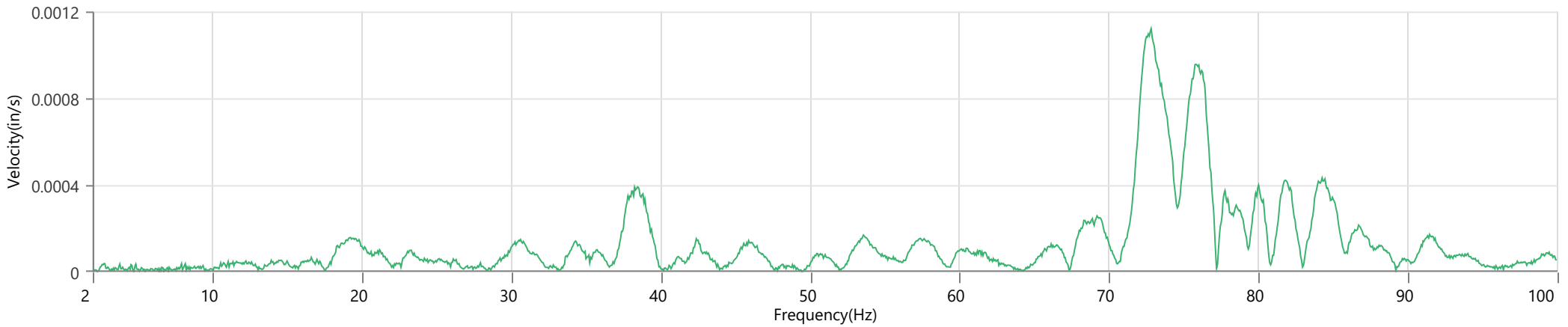
Extended Note N30.49742 W98.21566

Post Event Notes No text to be displayed.

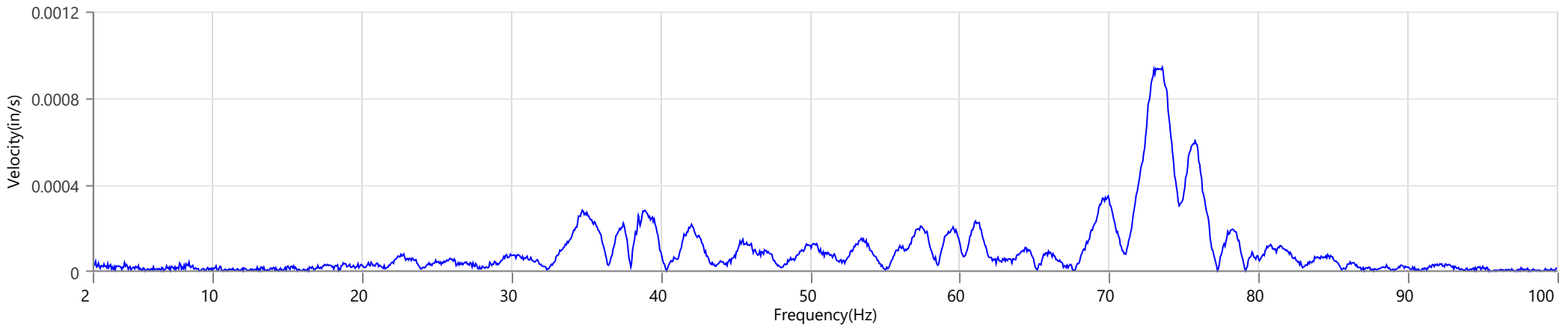
Tran - Dominant Frequency 38.4 Hz, Amplitude 0.0006 in/s (Peak Particle Velocity: 0.0375 in/s)



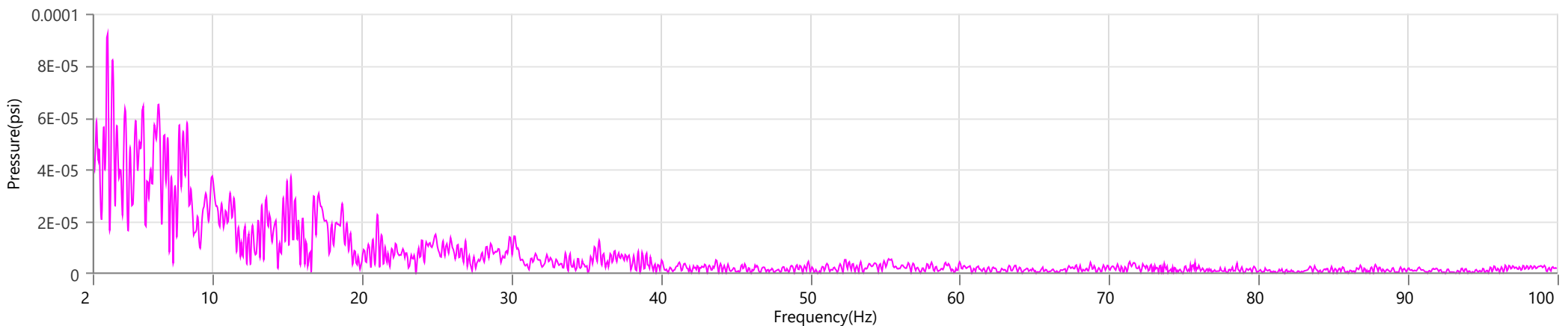
Vert - Dominant Frequency 72.8 Hz, Amplitude 0.0011 in/s (Peak Particle Velocity: 0.0537 in/s)



Long - Dominant Frequency 73.6 Hz, Amplitude 0.0009 in/s (Peak Particle Velocity: 0.0375 in/s)



Mic - Dominant Frequency 3.0 Hz, Amplitude 0.00009 psi (Peak Sound Pressure Level: 0.002660 psi)



Waveform Trigger Source
Trigger Level(s)
Trigger Level (Mic)
Pre-Trigger/Record Time
Sample Rate
Setup File Name
Operator

Tran at January 9, 2024 11:09:53
 Geo 0.0200 in/s
 Mic 0.01029 psi, 131 dB(L)
 0.50 sec/8.0 sec (Fixed)
 4096 sps
 Spicewood Hwy 71 - Station 4.mmb
 Operator

Serial Number
Model Number
Battery Level
Unit Calibration
Event File Name
USB Sensor Support

UM7490
 Micromate ISEE 10.90GC
 3.8 volts
 February 23, 2023 by InstanTEL
 UM7490_20240109110953.IDFW
 Disabled

Notes

Location Station 4
 Client Spicewood Crushed Stone
 Company Hwy 71 Quarry
 General Notes IGS, Inc.

Extended Note N30.49821 W98.21578

Post Event Notes No text to be displayed.

Geophone

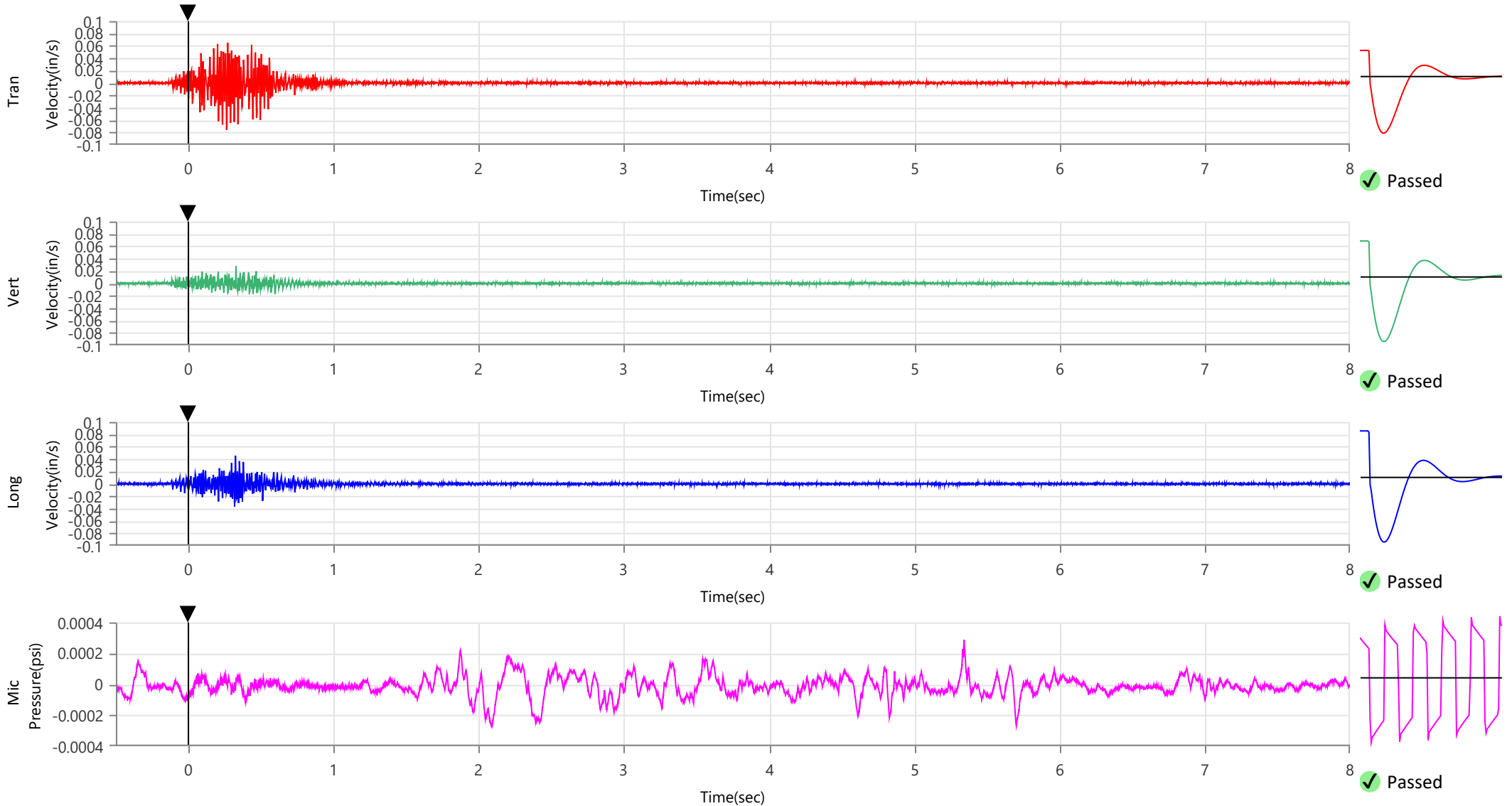
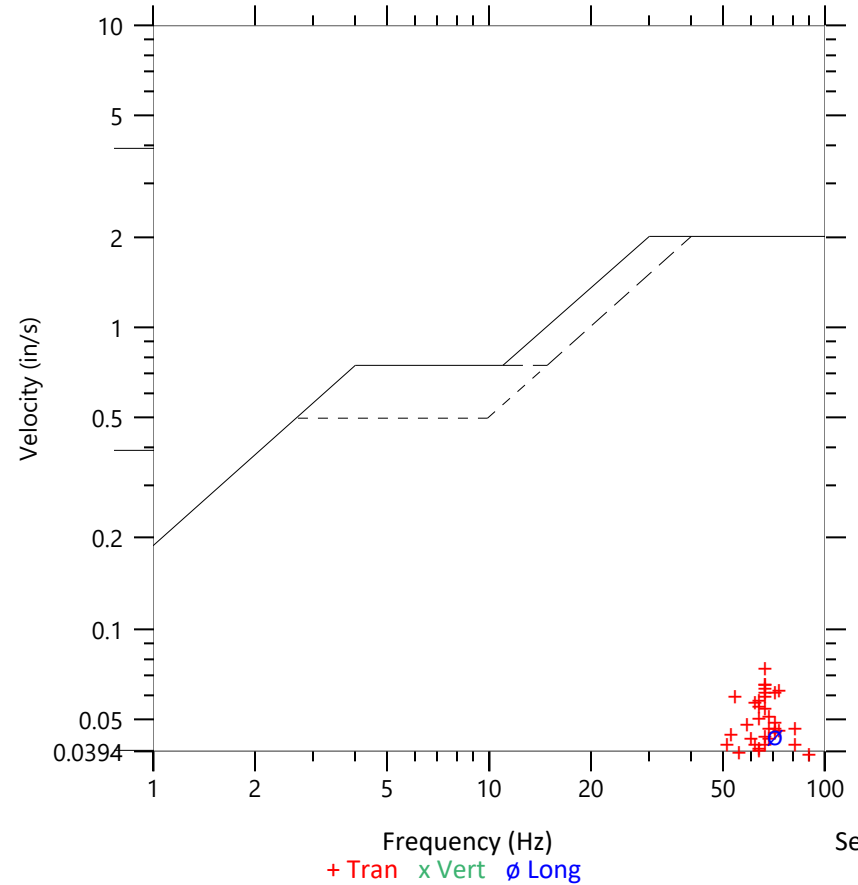
	Tran	Vert	Long
Peak Particle Velocity	0.0760 in/s	0.0279 in/s	0.0453 in/s
Zero Crossing Frequency	66.1 Hz	78.8 Hz	70.6 Hz
Time (Relative to Trigger)	0.263 sec	0.329 sec	0.325 sec
Peak Acceleration	0.079 g	0.039 g	0.056 g
Peak Displacement	0.000 in	0.000 in	0.000 in
Sensor Check	✓ Passed	✓ Passed	✓ Passed
Frequency	7.1 Hz	7.3 Hz	7.5 Hz
Overswing Ratio	5.0	3.8	3.7

Peak Vector Sum 0.0770 in/s at 0.263 sec

ISEE Linear Microphone

Peak Sound Pressure Level 0.000288 psi
 Peak Sound Pressure Level 99.9 dB(L)
 Time (Relative to Trigger) 5.343 sec
 Zero Crossing Frequency 6.3 Hz
 Sensor Check ✓ Passed
 Frequency 20.5 Hz
 Test Amplitude 1557 mv

USBM R18507 And OSMRE
 Velocity versus Frequency (Zero Crossing)



Waveform Trigger Source
Trigger Level(s)
Trigger Level (Mic)
Pre-Trigger/Record Time
Sample Rate
Setup File Name
Operator

Tran at January 9, 2024 11:09:53
 Geo 0.0200 in/s
 Mic 0.01029 psi, 131 dB(L)
 0.50 sec/8.0 sec (Fixed)
 4096 sps
 Spicewood Hwy 71 - Station 4.mmb
 Operator

Serial Number
Model Number
Battery Level
Unit Calibration
Event File Name
USB Sensor Support

UM7490
 Micromate ISEE 10.90GC
 3.8 volts
 February 23, 2023 by Instantel
 UM7490_20240109110953.IDFW
 Disabled

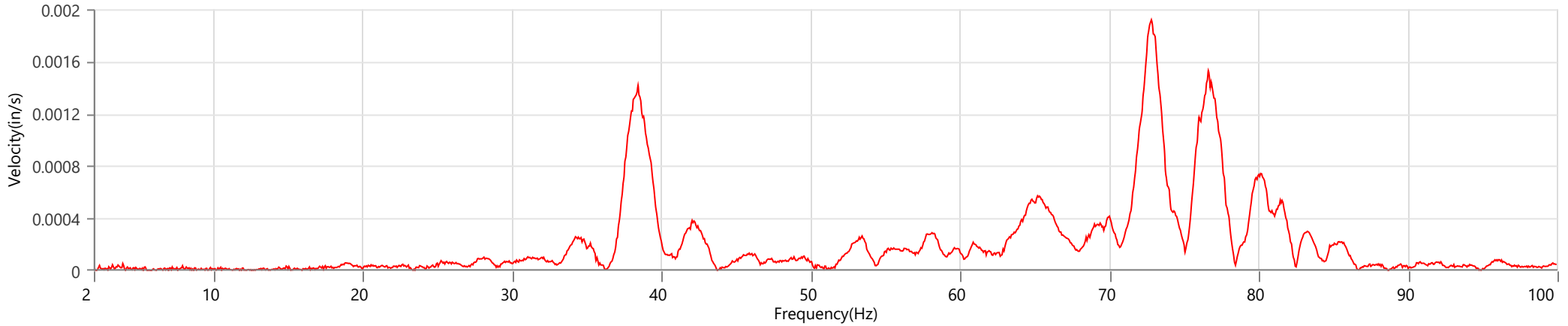
Notes

Location Station 4
 Client Spicewood Crushed Stone
 Company Hwy 71 Quarry
 General Notes IGS, Inc.

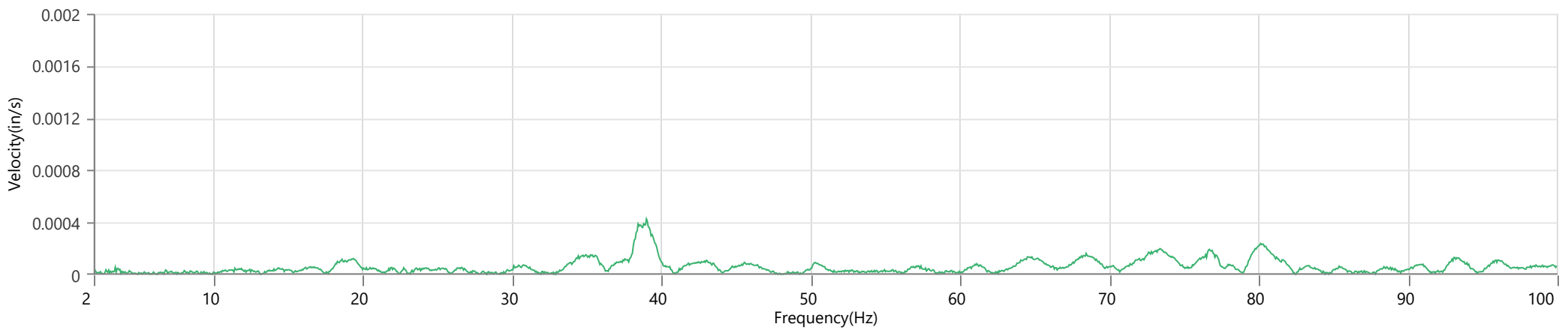
Extended Note N30.49821 W98.21578

Post Event Notes No text to be displayed.

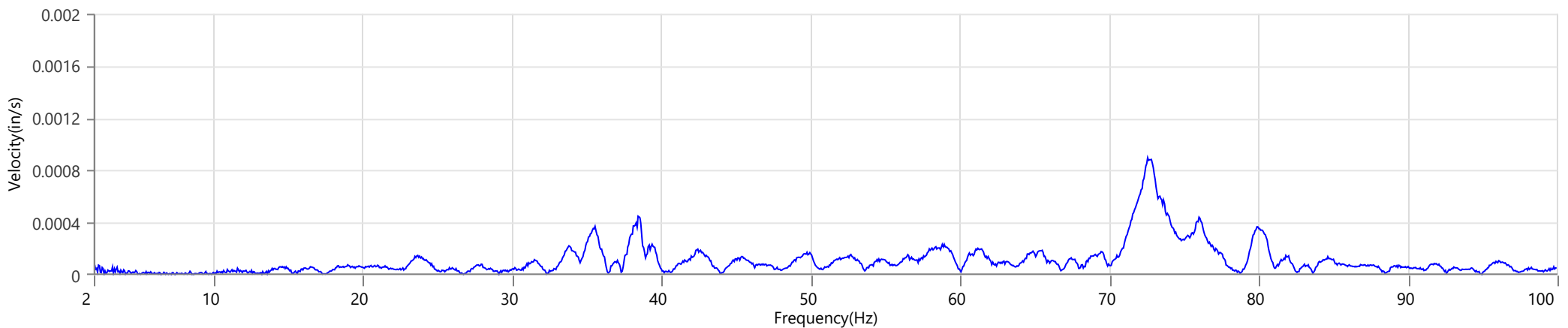
Tran - Dominant Frequency 72.8 Hz, Amplitude 0.0019 in/s (Peak Particle Velocity: 0.0760 in/s)



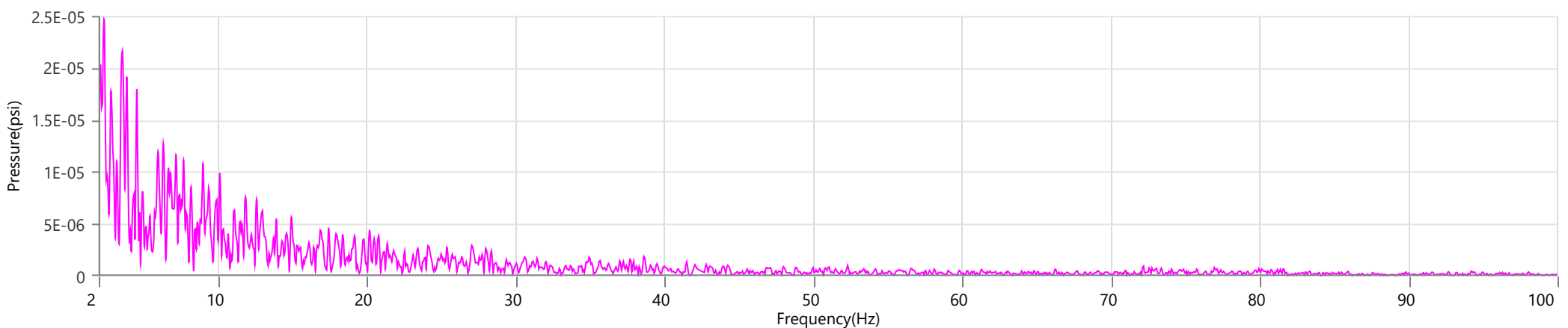
Vert - Dominant Frequency 39.0 Hz, Amplitude 0.0004 in/s (Peak Particle Velocity: 0.0279 in/s)



Long - Dominant Frequency 72.6 Hz, Amplitude 0.0009 in/s (Peak Particle Velocity: 0.0453 in/s)



Mic - Dominant Frequency 2.4 Hz, Amplitude 0.00002 psi (Peak Sound Pressure Level: 0.000288 psi)



Waveform Trigger Source
Trigger Level(s)
Trigger Level (Mic)
Pre-Trigger/Record Time
Sample Rate
Setup File Name
Operator

Tran at January 9, 2024 11:09:53
 Geo 0.0200 in/s
 Mic 0.01029 psi, 131 dB(L)
 0.50 sec/8.0 sec (Fixed)
 4096 sps
 Spicewood Hwy 71 - Station 5.mmb
 Operator

Serial Number
Model Number
Battery Level
Unit Calibration
Event File Name
USB Sensor Support

UM7409
 Micromate ISEE 10.90GC
 3.8 volts
 June 27, 2023 by Instantel
 UM7409_20240109110953.IDFW
 Disabled

Notes

Location Station 5
 Client Spicewood Crushed Stone
 Company Hwy 71 Quarry
 General Notes IGS, Inc.

Extended Note N30.49911 W98.21538

Post Event Notes No text to be displayed.

Geophone

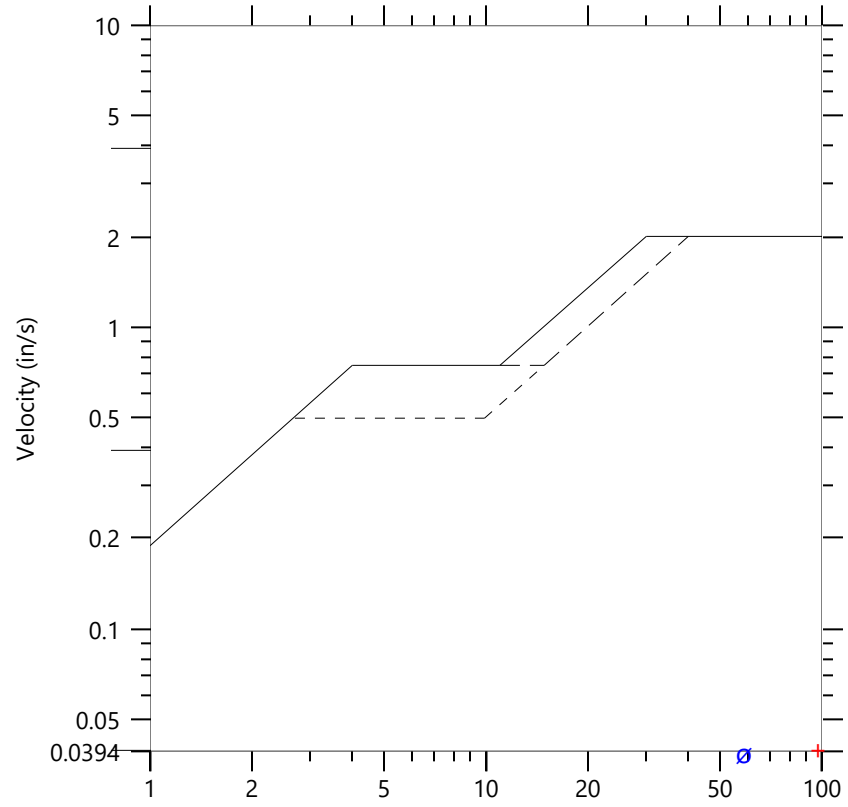
	Tran	Vert	Long
Peak Particle Velocity	0.0403 in/s	0.0360 in/s	0.0503 in/s
Zero Crossing Frequency	97.5 Hz	>100 Hz	>100 Hz
Time (Relative to Trigger)	0.438 sec	0.353 sec	0.383 sec
Peak Acceleration	0.089 g	0.082 g	0.089 g
Peak Displacement	0.000 in	0.000 in	0.000 in
Sensor Check	✓ Passed	✓ Passed	✓ Passed
Frequency	7.5 Hz	7.3 Hz	7.3 Hz
Overswing Ratio	3.7	4.0	3.3

Peak Vector Sum 0.0656 in/s at 0.349 sec

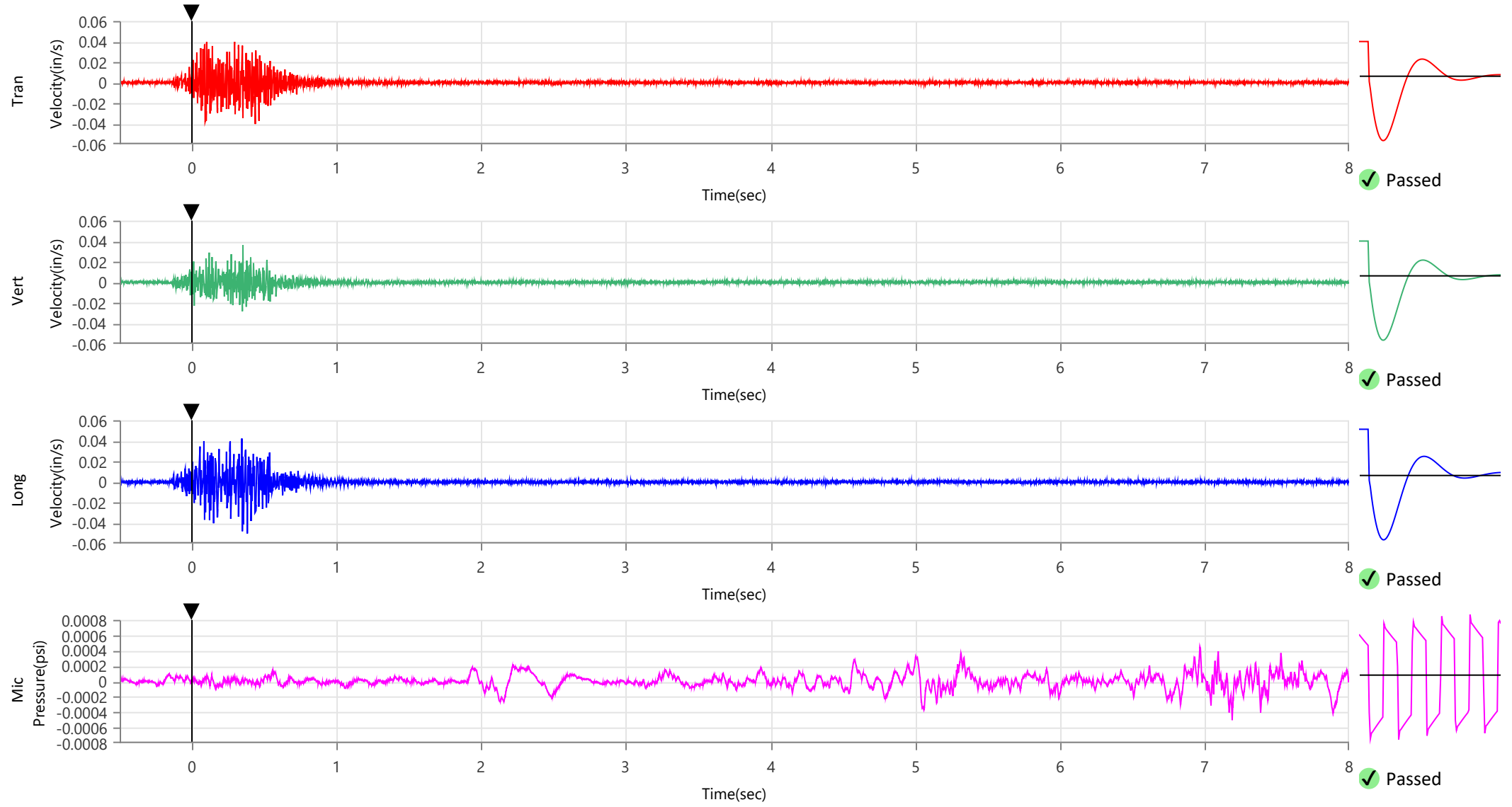
ISEE Linear Microphone

Peak Sound Pressure Level 0.000502 psi
 Peak Sound Pressure Level 104.8 dB(L)
 Time (Relative to Trigger) 7.192 sec
 Zero Crossing Frequency 11.6 Hz
 Sensor Check ✓ Passed
 Frequency 19.7 Hz
 Test Amplitude 1553 mv

USBM R18507 And OSMRE
 Velocity versus Frequency (Zero Crossing)



Frequency (Hz)
 + Tran x Vert ø Long
 Sensor Check



Waveform Trigger Source
Trigger Level(s)
Trigger Level (Mic)
Pre-Trigger/Record Time
Sample Rate
Setup File Name
Operator

Tran at January 9, 2024 11:09:53
 Geo 0.0200 in/s
 Mic 0.01029 psi, 131 dB(L)
 0.50 sec/8.0 sec (Fixed)
 4096 sps
 Spicewood Hwy 71 - Station 5.mmb
 Operator

Serial Number
Model Number
Battery Level
Unit Calibration
Event File Name
USB Sensor Support

UM7409
 Micromate ISEE 10.90GC
 3.8 volts
 June 27, 2023 by Instantel
 UM7409_20240109110953.IDFW
 Disabled

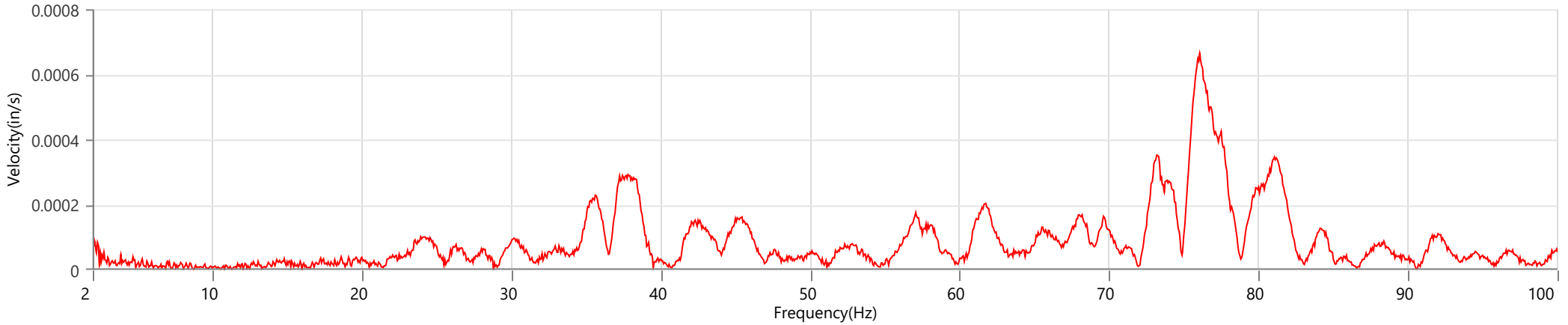
Notes

Location Station 5
 Client Spicewood Crushed Stone
 Company Hwy 71 Quarry
 General Notes IGS, Inc.

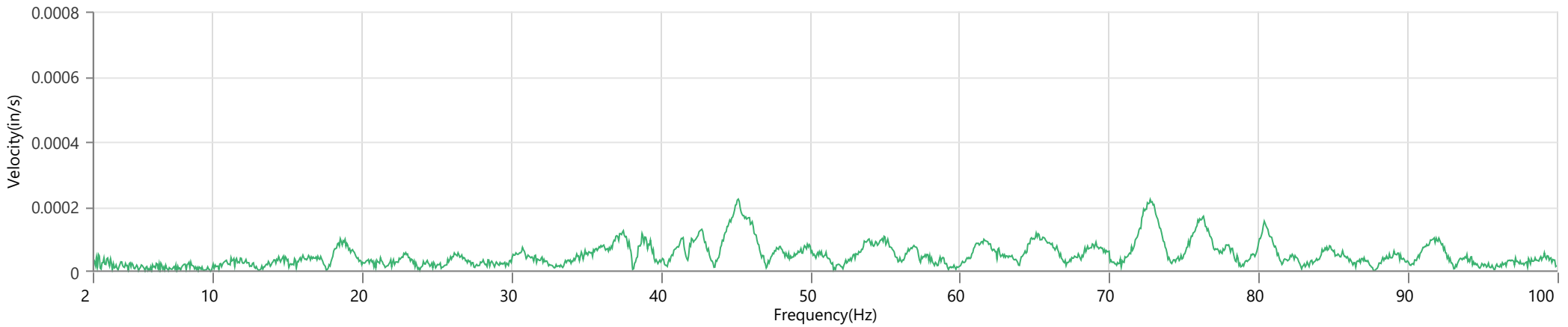
Extended Note N30.49911 W98.21538

Post Event Notes No text to be displayed.

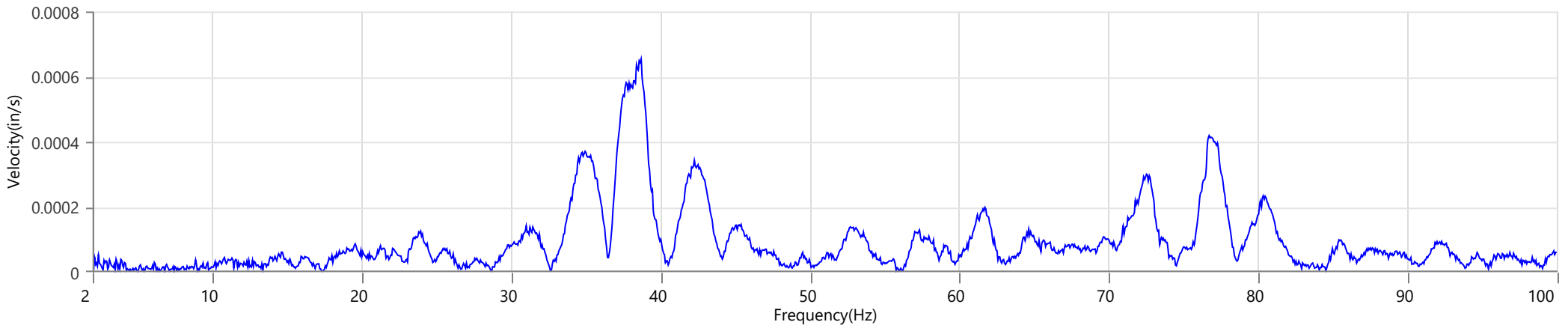
Tran - Dominant Frequency 76.1 Hz, Amplitude 0.0007 in/s (Peak Particle Velocity: 0.0403 in/s)



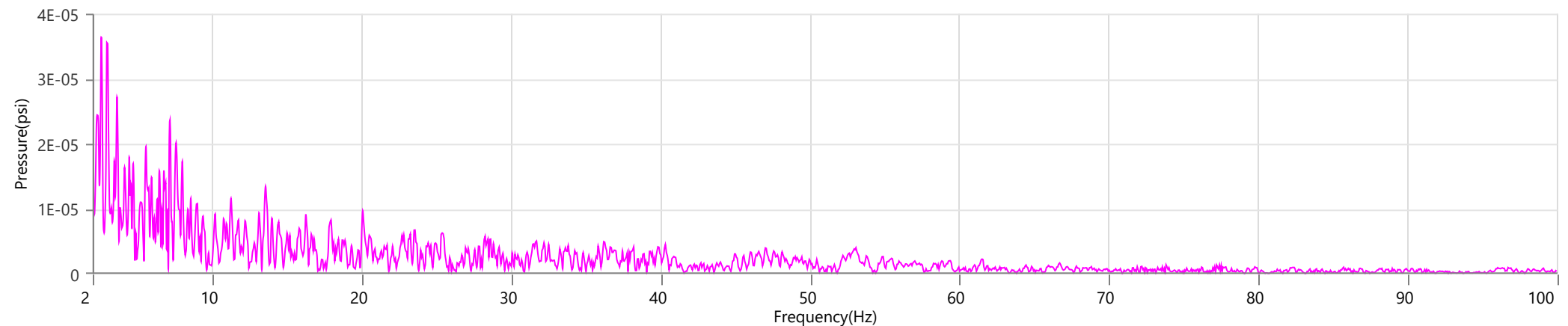
Vert - Dominant Frequency 45.2 Hz, Amplitude 0.0002 in/s (Peak Particle Velocity: 0.0360 in/s)



Long - Dominant Frequency 38.7 Hz, Amplitude 0.0007 in/s (Peak Particle Velocity: 0.0503 in/s)



Mic - Dominant Frequency 2.6 Hz, Amplitude 0.00004 psi (Peak Sound Pressure Level: 0.000502 psi)



Waveform Trigger Source
Trigger Level(s)
Trigger Level (Mic)
Pre-Trigger/Record Time
Sample Rate
Setup File Name
Operator

Vert at January 9, 2024 11:09:51
 Geo 0.0200 in/s
 Mic 0.01029 psi, 131 dB(L)
 0.50 sec/8.0 sec (Fixed)
 4096 sps
 Spicewood Hwy 71 - Station 6.mmb
 Operator

Serial Number
Model Number
Battery Level
Unit Calibration
Event File Name
USB Sensor Support

UM7284
 Micromate ISEE 10.90GC
 3.8 volts
 June 26, 2023 by Instantel
 UM7284_20240109110951.IDFW
 Disabled

Notes

Location Station 6
 Client Spicewood Crushed Stone
 Company Hwy 71 Quarry
 General Notes IGS, Inc.

Extended Note N30.495113 W98.206539

Post Event Notes No text to be displayed.

Geophone

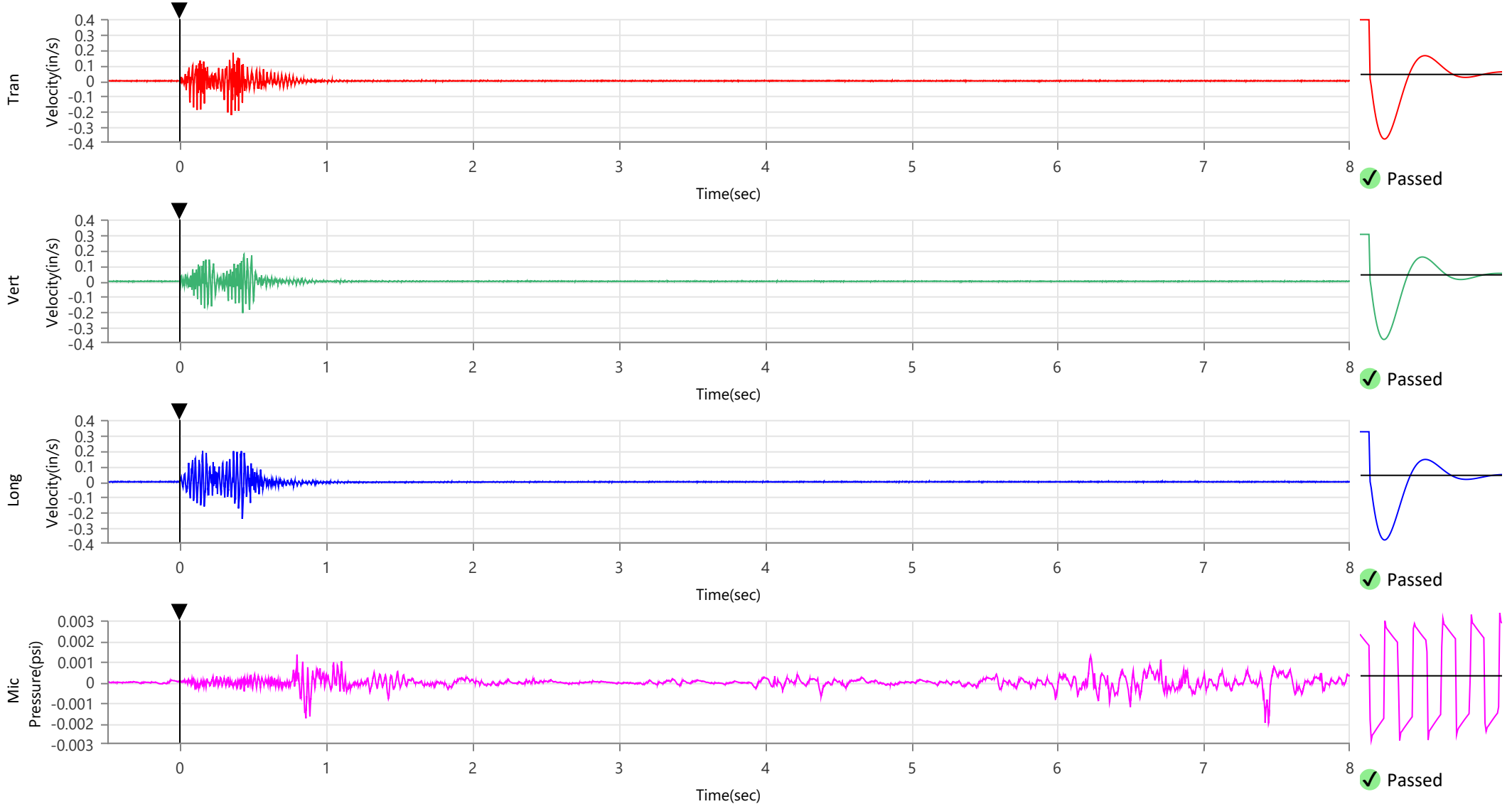
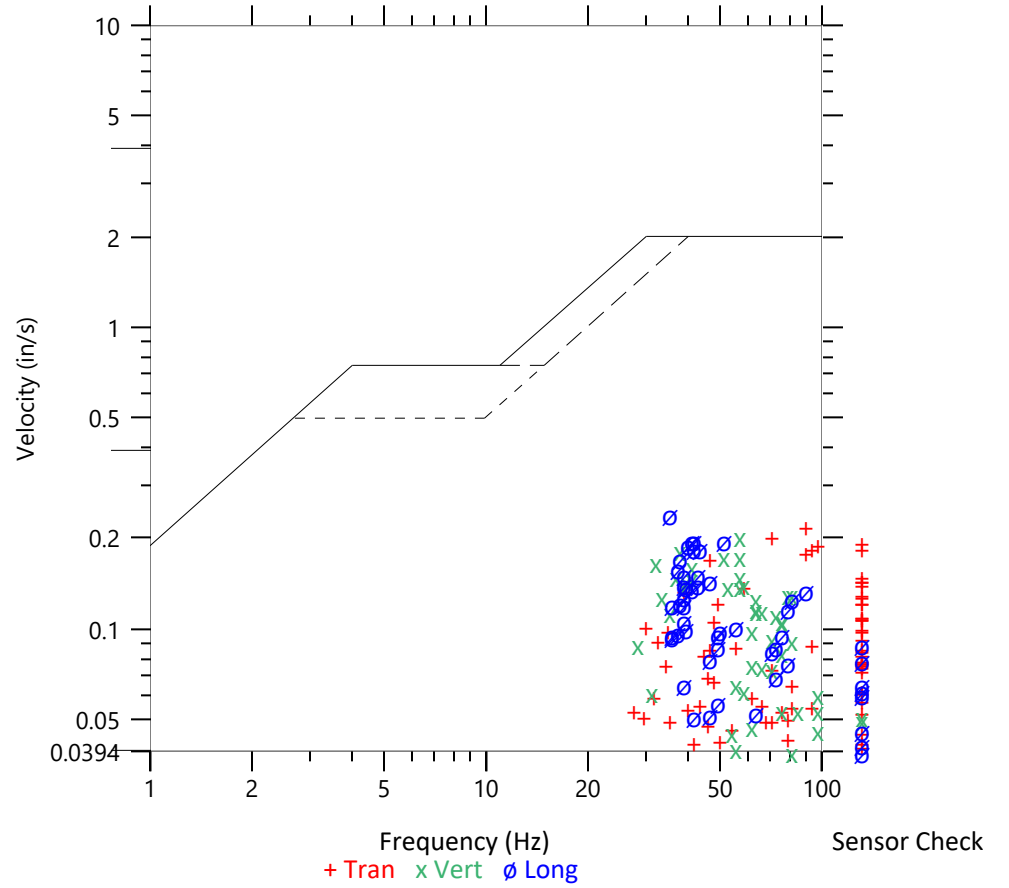
	Tran	Vert	Long
Peak Particle Velocity	0.2222 in/s	0.2054 in/s	0.2402 in/s
Zero Crossing Frequency	89.0 Hz	56.9 Hz	35.3 Hz
Time (Relative to Trigger)	0.349 sec	0.427 sec	0.424 sec
Peak Acceleration	0.323 g	0.207 g	0.313 g
Peak Displacement	0.001 in	0.001 in	0.001 in
Sensor Check	✓ Passed	✓ Passed	✓ Passed
Frequency	7.3 Hz	7.5 Hz	7.1 Hz
Overswing Ratio	3.4	3.6	4.0

Peak Vector Sum 0.3065 in/s at 0.424 sec

ISEE Linear Microphone

Peak Sound Pressure Level 0.001992 psi
 Peak Sound Pressure Level 116.7 dB(L)
 Time (Relative to Trigger) 7.444 sec
 Zero Crossing Frequency 8.2 Hz
 Sensor Check ✓ Passed
 Frequency 20.5 Hz
 Test Amplitude 1553 mv

USBM R18507 And OSMRE
 Velocity versus Frequency (Zero Crossing)



Waveform Trigger Source
Trigger Level(s)
Trigger Level (Mic)
Pre-Trigger/Record Time
Sample Rate
Setup File Name
Operator

Vert at January 9, 2024 11:09:51
 Geo 0.0200 in/s
 Mic 0.01029 psi, 131 dB(L)
 0.50 sec/8.0 sec (Fixed)
 4096 sps
 Spicewood Hwy 71 - Station 6.mmb
 Operator

Serial Number
Model Number
Battery Level
Unit Calibration
Event File Name
USB Sensor Support

UM7284
 Micromate ISEE 10.90GC
 3.8 volts
 June 26, 2023 by Instantel
 UM7284_20240109110951.IDFW
 Disabled

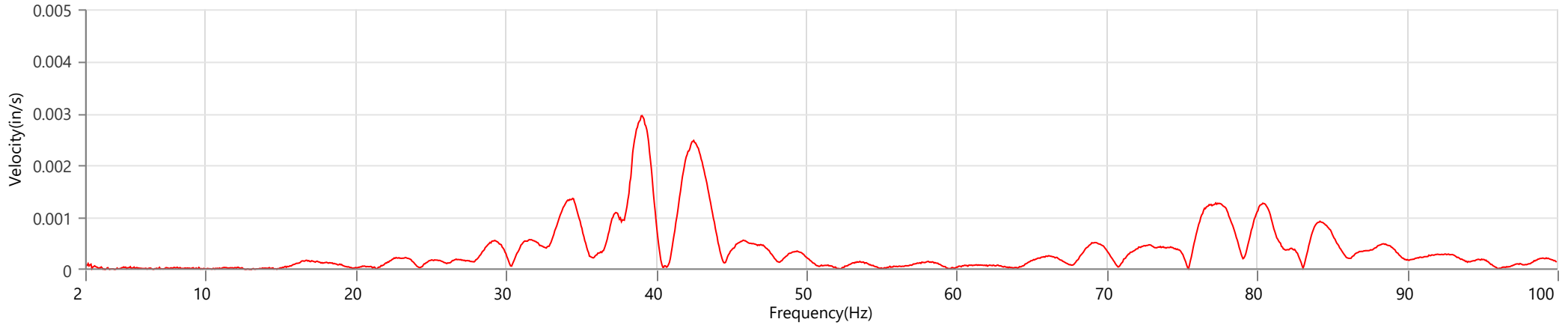
Notes

Location Station 6
 Client Spicewood Crushed Stone
 Company Hwy 71 Quarry
 General Notes IGS, Inc.

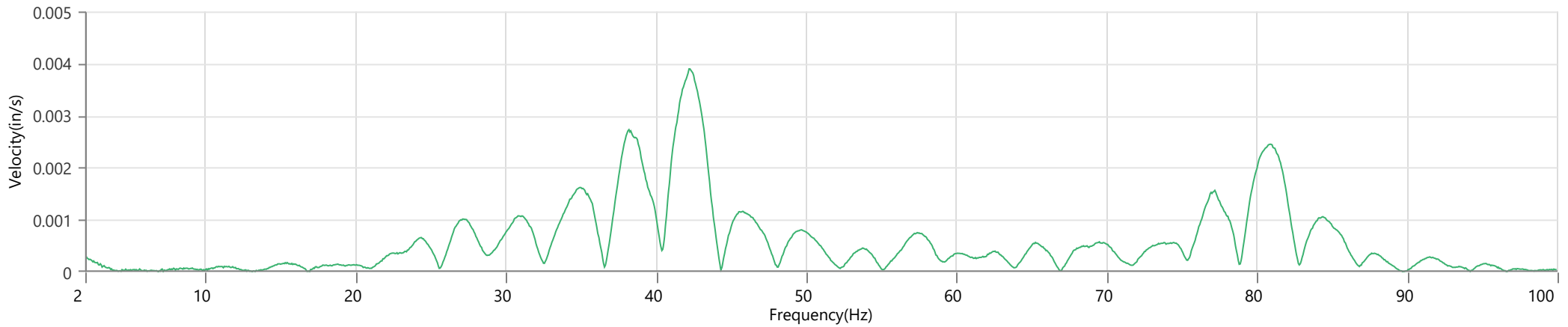
Extended Note N30.495113 W98.206539

Post Event Notes No text to be displayed.

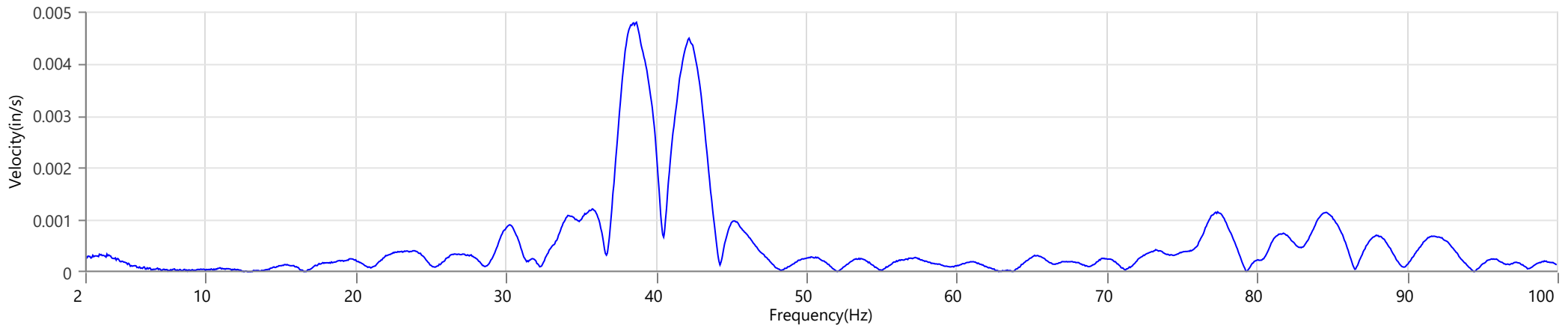
Tran - Dominant Frequency 39.1 Hz, Amplitude 0.0030 in/s (Peak Particle Velocity: 0.2222 in/s)



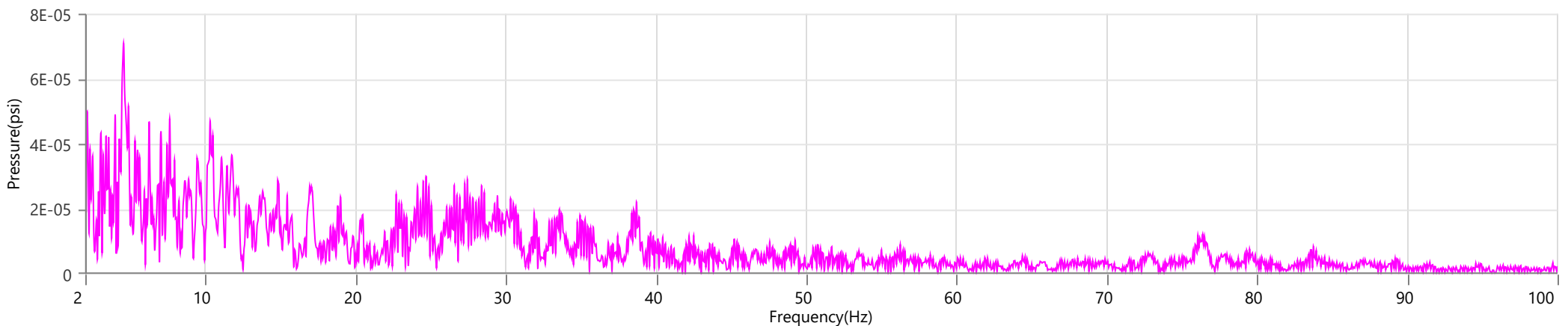
Vert - Dominant Frequency 42.2 Hz, Amplitude 0.0039 in/s (Peak Particle Velocity: 0.2054 in/s)



Long - Dominant Frequency 38.7 Hz, Amplitude 0.0048 in/s (Peak Particle Velocity: 0.2402 in/s)



Mic - Dominant Frequency 4.6 Hz, Amplitude 0.00007 psi (Peak Sound Pressure Level: 0.001992 psi)



Start January 9, 2024 00:00:05
Finish January 9, 2024 23:29:59
Number of Intervals/Interval 1409.91/60 sec
Sample Rate 4096 sps
Setup File Name Spicewood Hwy 71 - Noise 2.mmb
Operator Operator

Serial Number UM11630
Model Number Micromate ISEE 10.90GC
Battery Level 3.8 volts
Unit Calibration June 19, 2023 by Instantel
Microphone Calibration UA10154, March 2, 2023 by Instantel
Event File Name UM11630_20240109000005.IDFH
USB Sensor Support Disabled

Notes
Location Noise 2
Client Spicewood Crushed Stone
Company Hwy 71 Quarry
General Notes IGS, Inc.

Extended Note Station 5N30.49911 W98.21538

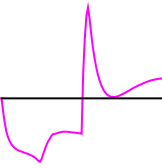
Post Event Notes No text to be displayed.

Sound Level Microphone

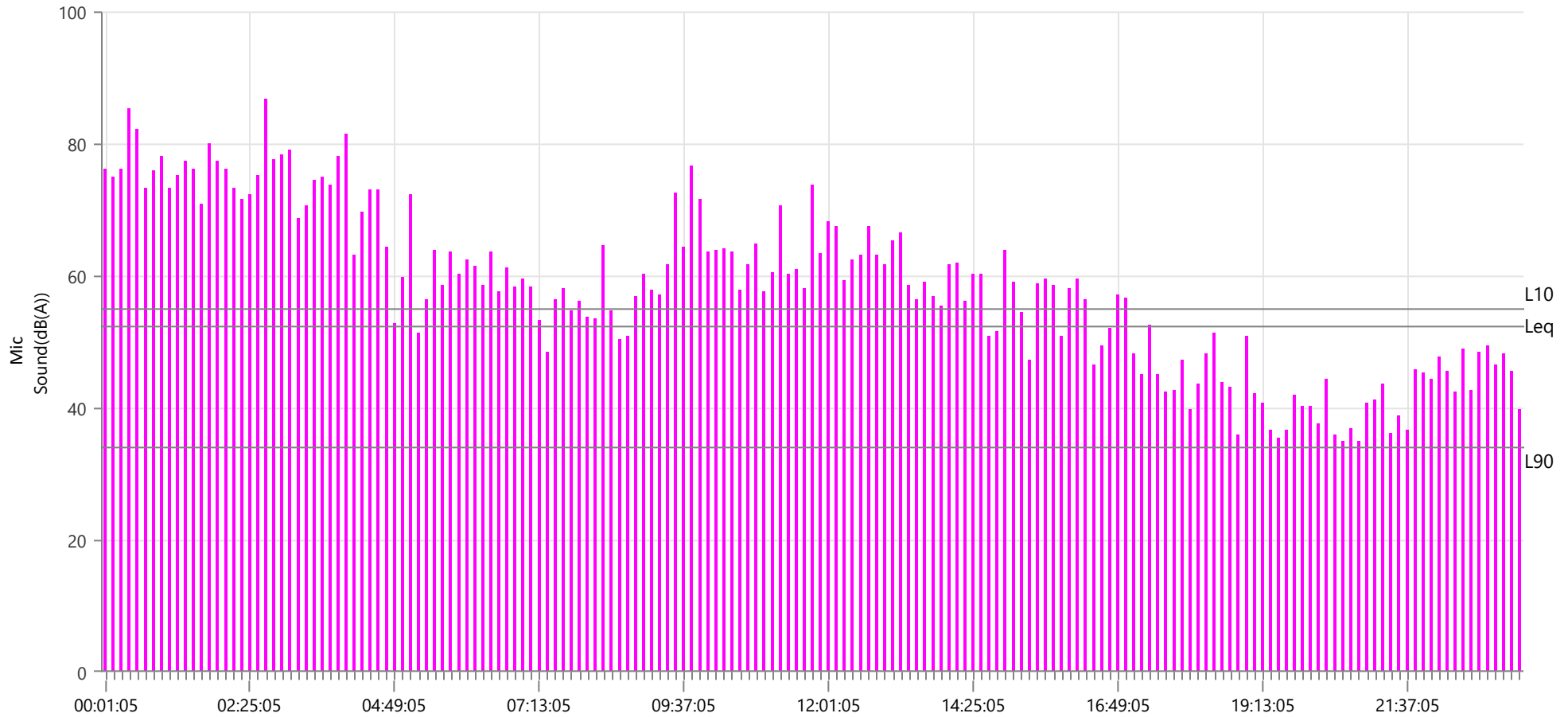
LMax 86.8 dB(A)
Date Jan 9, 2024
Time 02:45:05

	LMin	L10	L90	Leq
Sound(dB(A))	32.3	55	34	52.4
Sensor Check	✓ Passed			
Test Amplitude	1136 mv			

Sensor Check



✓ Passed



Start January 9, 2024 00:00:10
Finish January 9, 2024 23:29:59
Number of Intervals/Interval 1409.82/60 sec
Sample Rate 4096 sps
Setup File Name Spicewood Hwy 71 - Noise 3.mmb
Operator Operator

Serial Number UM11574
Model Number Micromate ISEE 10.90GC
Battery Level 3.8 volts
Unit Calibration June 28, 2023 by Instantel
Microphone Calibration UA10761, July 29, 2022 by Instantel
Event File Name UM11574_20240109000010.IDFH
USB Sensor Support Disabled

Notes
Location Noise 3
Client Spicewood Crushed Stone
Company Hwy 71 Quarry
General Notes IGS, Inc.

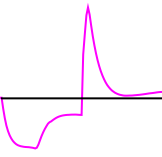
Extended Note N30.490958 W98.213495

Post Event Notes No text to be displayed.

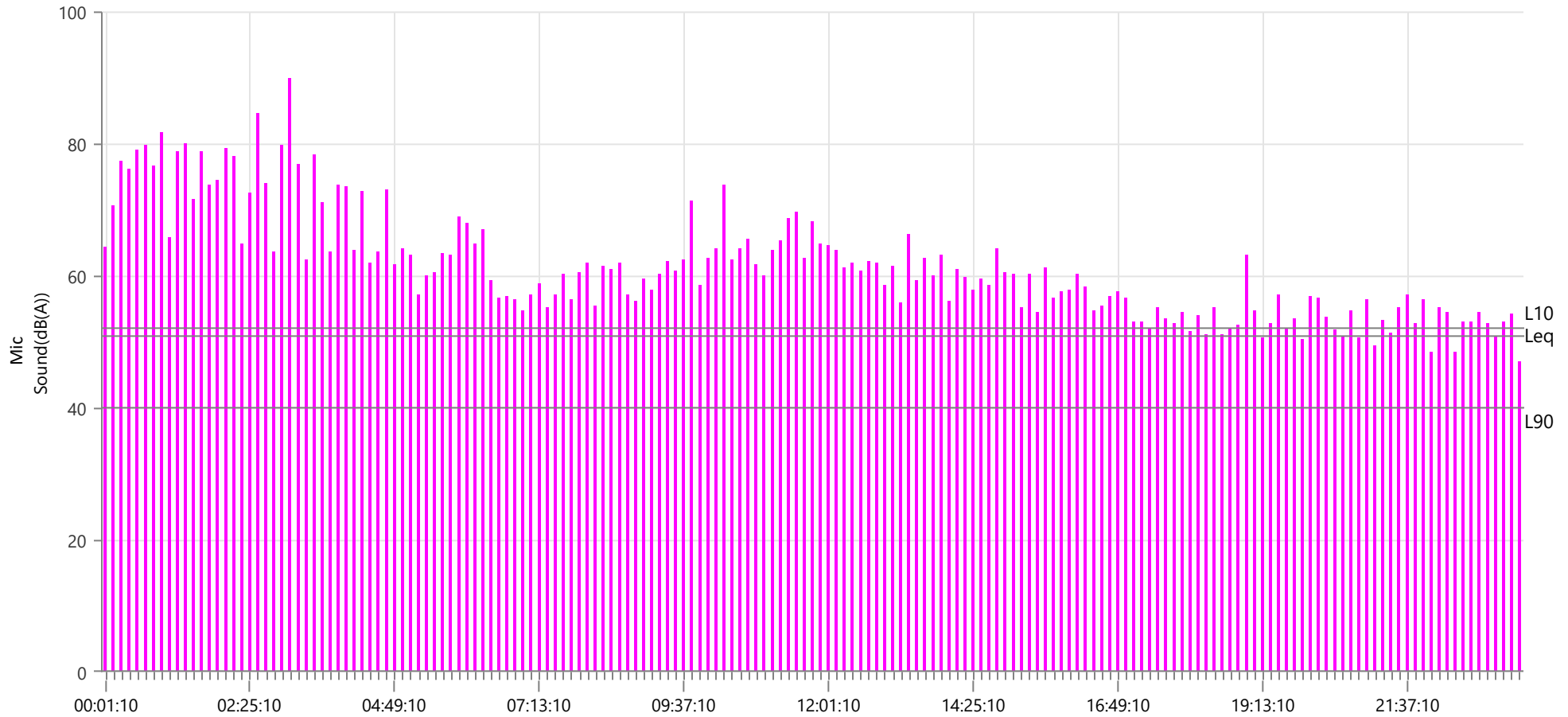
Sound Level Microphone

A-Weight Slow
LMax 89.8 dB(A)
Date Jan 9, 2024
Time 03:11:10
LMin **L10** **L90** **Leq**
 31.6 52 40 50.9
Sensor Check Passed
Test Amplitude 1145 mv

Sensor Check



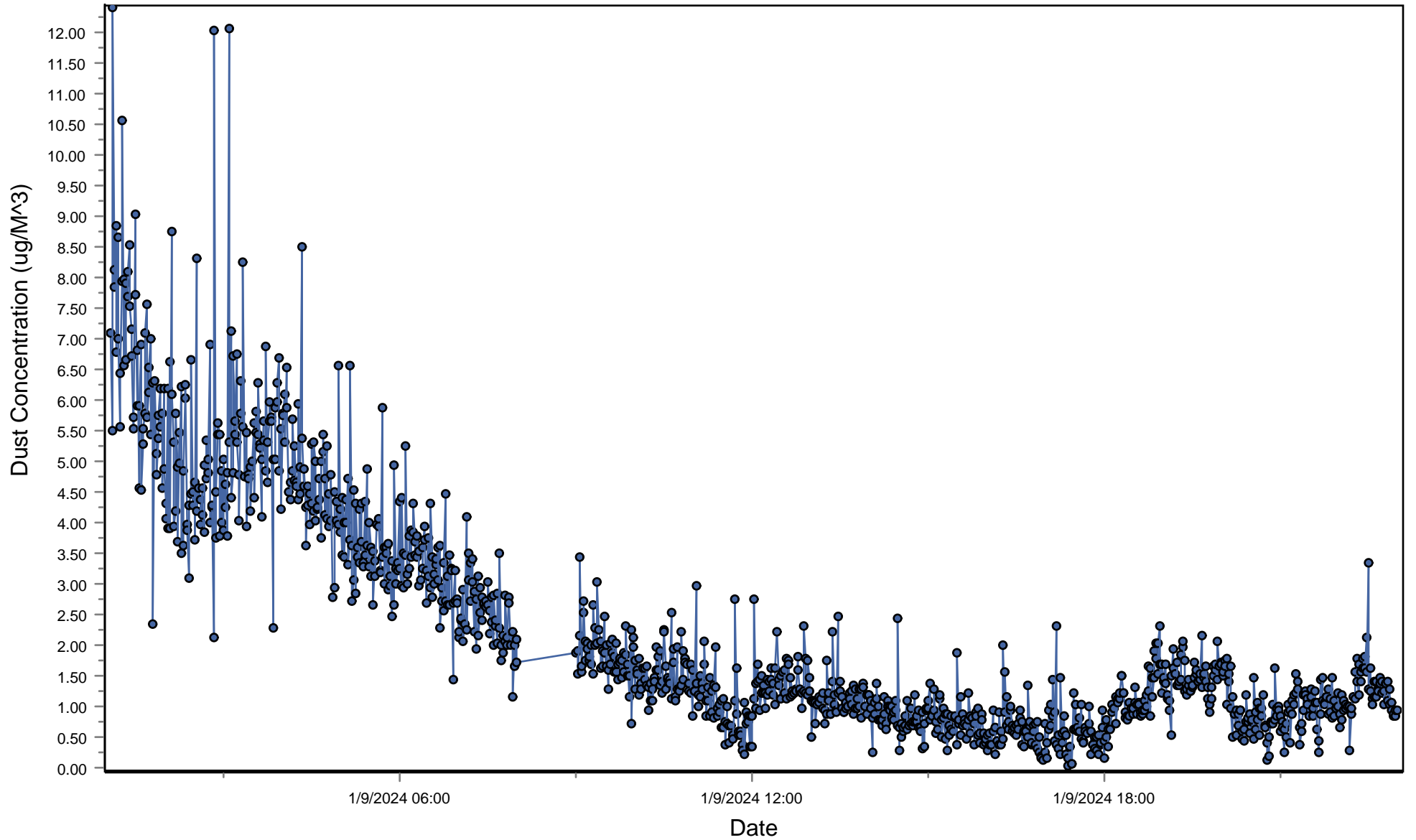
Passed



Spicewood Crushed Stone - Hwy 71 Quarry

South Dust Monitor

D100@AvgPartL



Spicewood Crushed Stone - Hwy 71 Quarry

North Dust Monitor

D100@AvgPartL

