

Waveform Trigger Source
Trigger Level(s)
Trigger Level (Mic)
Pre-Trigger/Record Time
Sample Rate
Setup File Name
Operator

Vert at January 25, 2024 11:47:31
 Geo 0.0200 in/s
 Mic 0.01029 psi, 131 dB(L)
 0.50 sec/8.0 sec (Fixed)
 4096 sps
 Spicewood Hwy 71 - Station 1.mmb
 Operator

Serial Number
Model Number
Battery Level
Unit Calibration
Event File Name
USB Sensor Support

UM20119
 Micromate ISEE 10.90GC
 3.8 volts
 April 24, 2023 by Instantel
 UM20119_20240125114731.IDFW
 Disabled

Notes

Location Station 1
 Client Spicewood Crushed Stone
 Company Hwy 71 Quarry
 General Notes IGS, Inc.

Extended Note N30.49572 W98.21577

Post Event Notes No text to be displayed.

Geophone

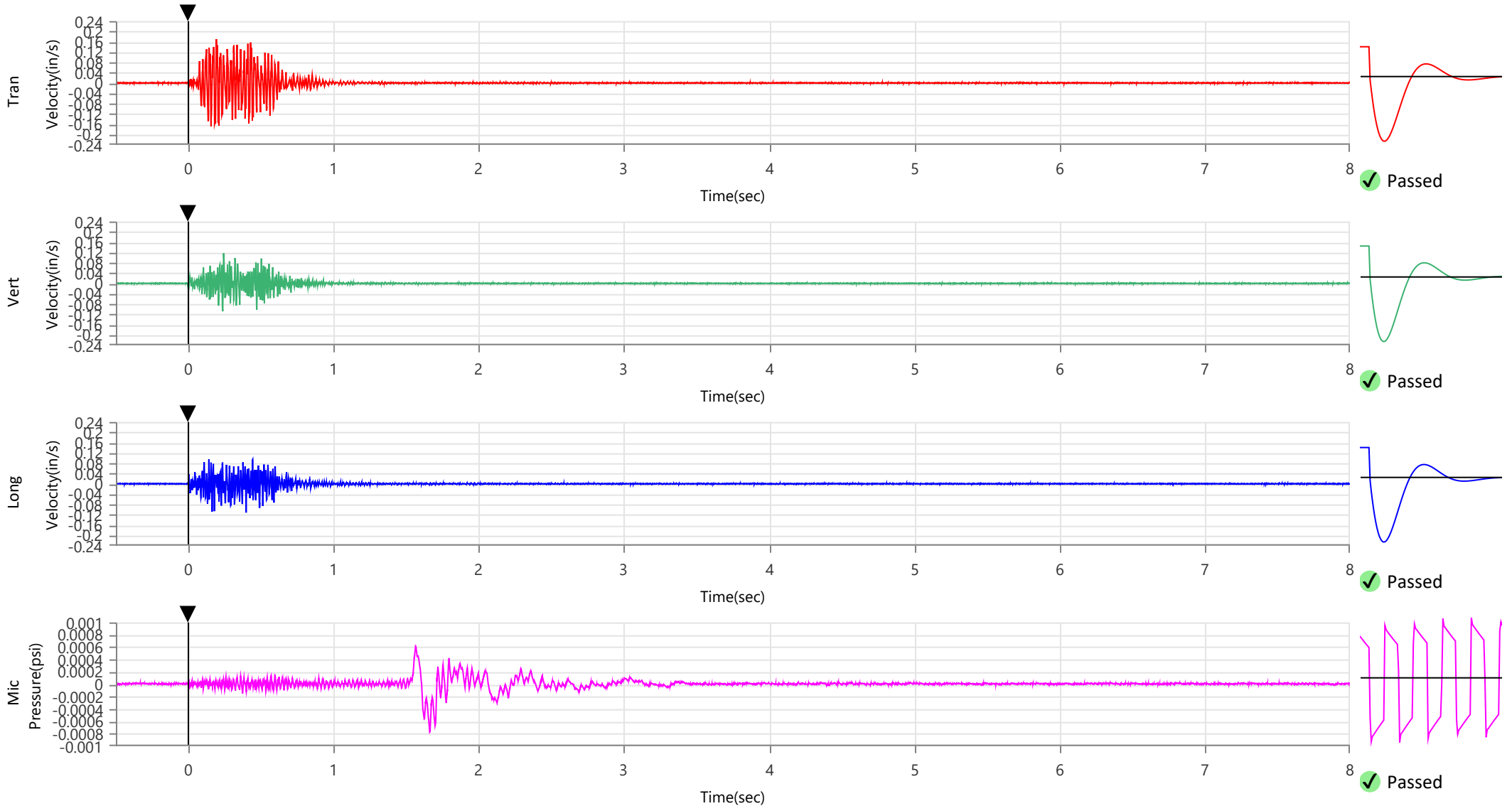
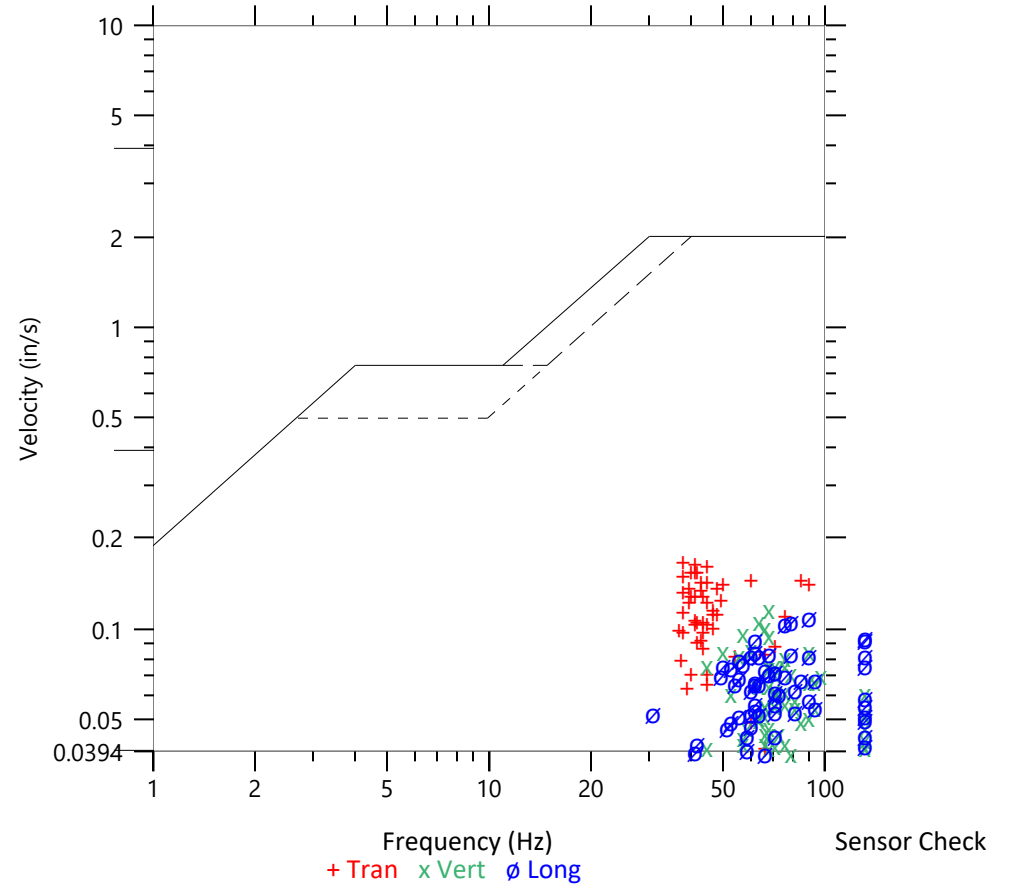
	Tran	Vert	Long
Peak Particle Velocity	0.1700 in/s	0.1173 in/s	0.1117 in/s
Zero Crossing Frequency	37.9 Hz	68.3 Hz	89.0 Hz
Time (Relative to Trigger)	0.193 sec	0.243 sec	0.398 sec
Peak Acceleration	0.260 g	0.138 g	0.197 g
Peak Displacement	0.001 in	0.000 in	0.000 in
Sensor Check	✓ Passed	✓ Passed	✓ Passed
Frequency	6.9 Hz	7.3 Hz	7.1 Hz
Overswing Ratio	5.1	4.5	5.0

Peak Vector Sum 0.1891 in/s at 0.156 sec

ISEE Linear Microphone

Peak Sound Pressure Level 0.000774 psi
 Peak Sound Pressure Level 108.5 dB(L)
 Time (Relative to Trigger) 1.663 sec
 Zero Crossing Frequency 4.8 Hz
 Sensor Check ✓ Passed
 Frequency 19.7 Hz
 Test Amplitude 1455 mv

USBM R18507 And OSMRE
 Velocity versus Frequency (Zero Crossing)



Waveform Trigger Source
Trigger Level(s)
Trigger Level (Mic)
Pre-Trigger/Record Time
Sample Rate
Setup File Name
Operator

Vert at January 25, 2024 11:47:31
 Geo 0.0200 in/s
 Mic 0.01029 psi, 131 dB(L)
 0.50 sec/8.0 sec (Fixed)
 4096 sps
 Spicewood Hwy 71 - Station 1.mmb
 Operator

Serial Number
Model Number
Battery Level
Unit Calibration
Event File Name
USB Sensor Support

UM20119
 Micromate ISEE 10.90GC
 3.8 volts
 April 24, 2023 by InstanTel
 UM20119_20240125114731.IDFW
 Disabled

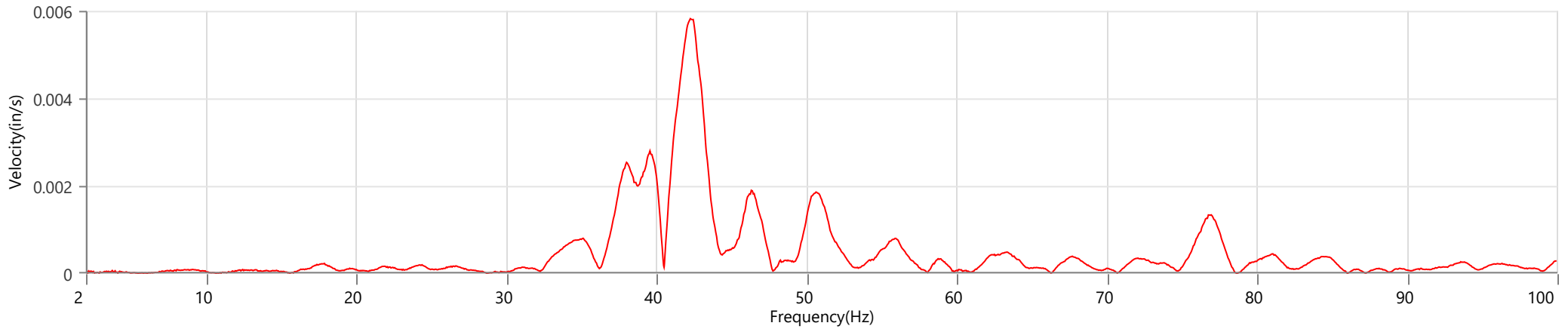
Notes

Location Station 1
 Client Spicewood Crushed Stone
 Company Hwy 71 Quarry
 General Notes IGS, Inc.

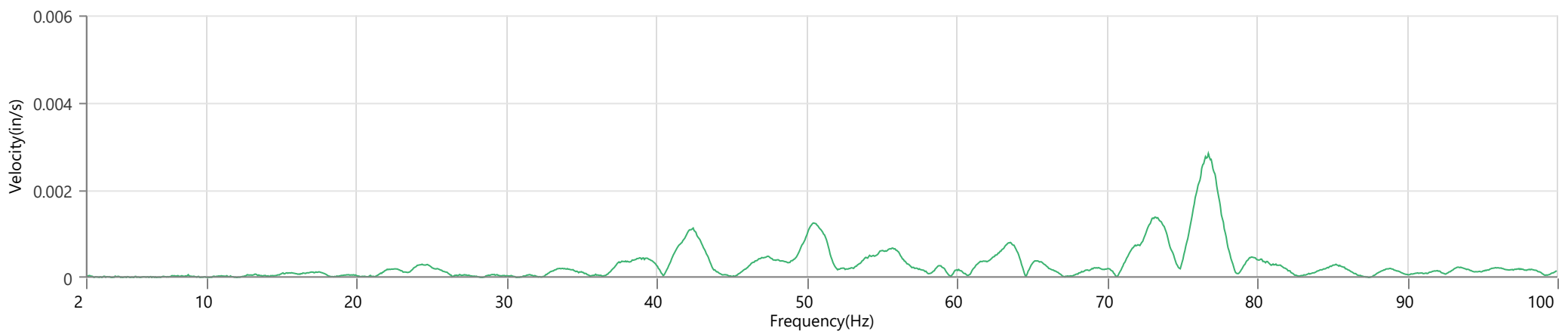
Extended Note N30.49572 W98.21577

Post Event Notes No text to be displayed.

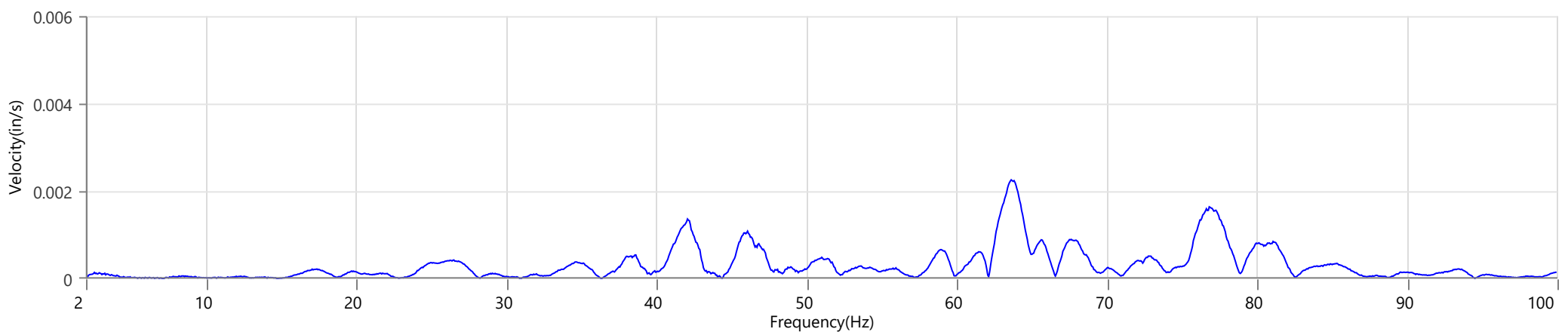
Tran - Dominant Frequency 42.2 Hz, Amplitude 0.0058 in/s (Peak Particle Velocity: 0.1700 in/s)



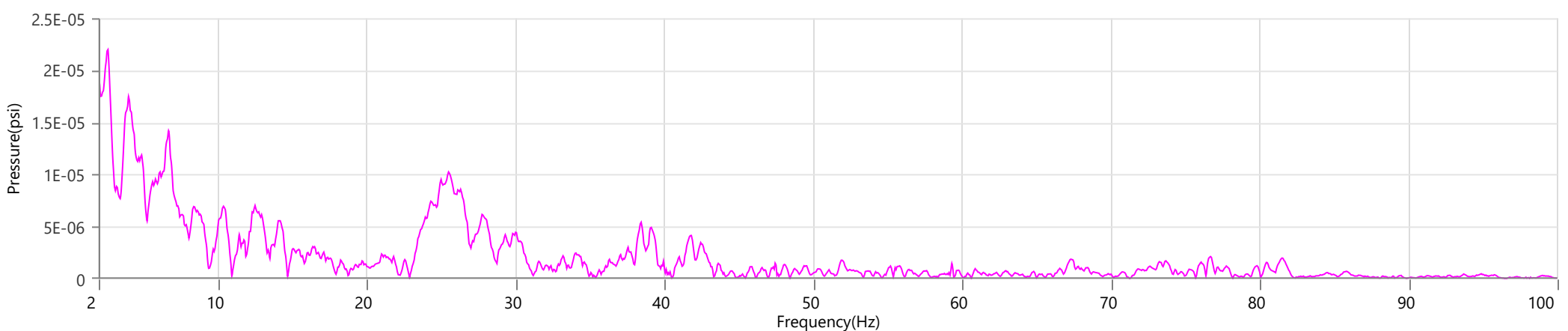
Vert - Dominant Frequency 76.8 Hz, Amplitude 0.0028 in/s (Peak Particle Velocity: 0.1173 in/s)



Long - Dominant Frequency 63.6 Hz, Amplitude 0.0023 in/s (Peak Particle Velocity: 0.1117 in/s)



Mic - Dominant Frequency 2.6 Hz, Amplitude 0.00002 psi (Peak Sound Pressure Level: 0.000774 psi)



Waveform Trigger Source
Trigger Level(s)
Trigger Level (Mic)
Pre-Trigger/Record Time
Sample Rate
Setup File Name
Operator

Tran at January 25, 2024 11:47:31
 Geo 0.0200 in/s
 Mic 0.01029 psi, 131 dB(L)
 0.50 sec/8.0 sec (Fixed)
 4096 sps
 Spicewood Hwy 71 - Station 2.mmb
 Operator

Serial Number
Model Number
Battery Level
Unit Calibration
Event File Name
USB Sensor Support

UM7306
 Micromate ISEE 10.90GC
 3.8 volts
 August 18, 2023 by Instantel
 UM7306_20240125114731.IDFW
 Disabled

Notes

Location Station 2
 Client Spicewood Crushed Stone
 Company Hwy 71
 General Notes IGS, Inc

Extended Note N30.49650 W21572

Post Event Notes No text to be displayed.

Geophone

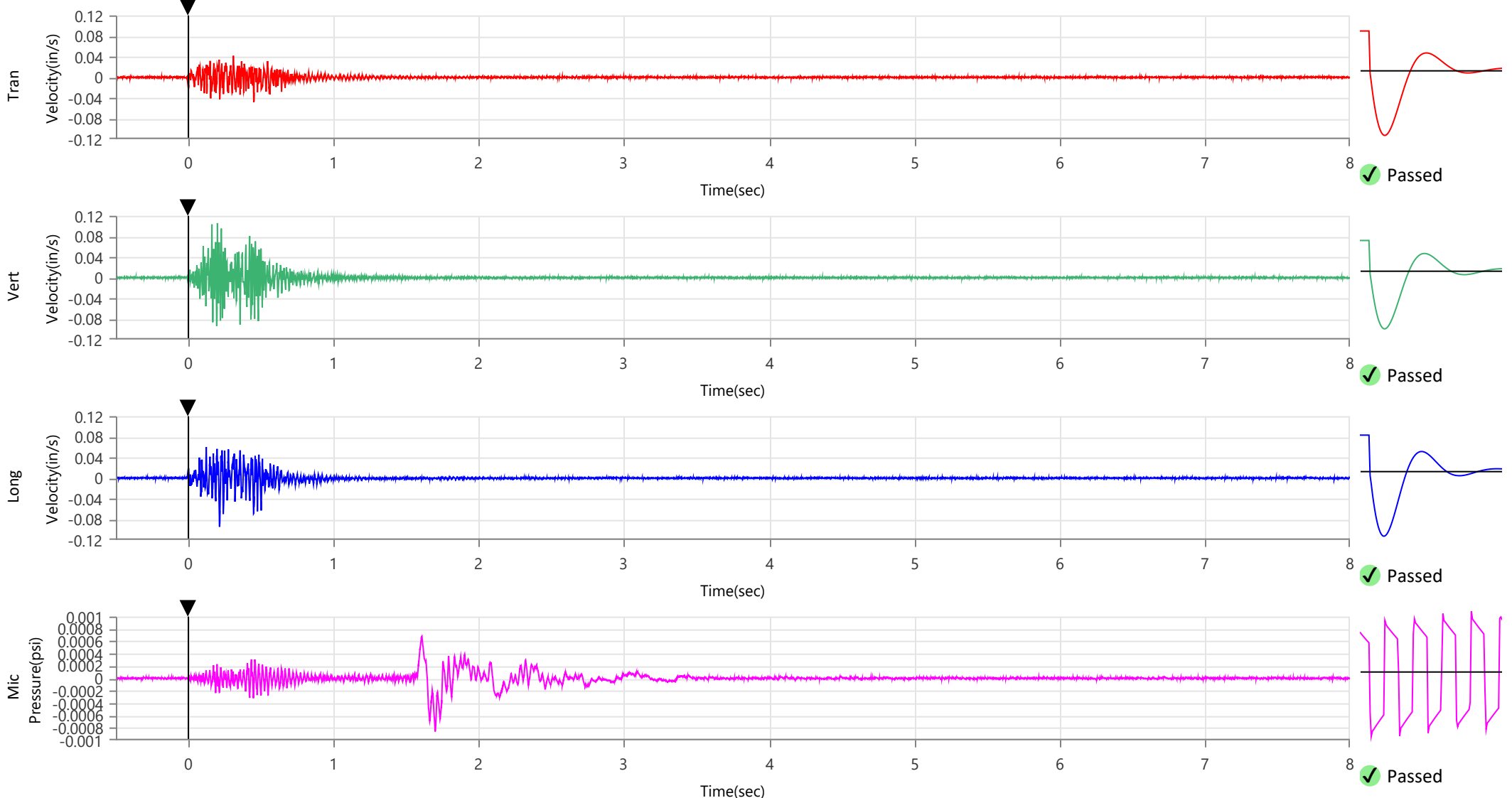
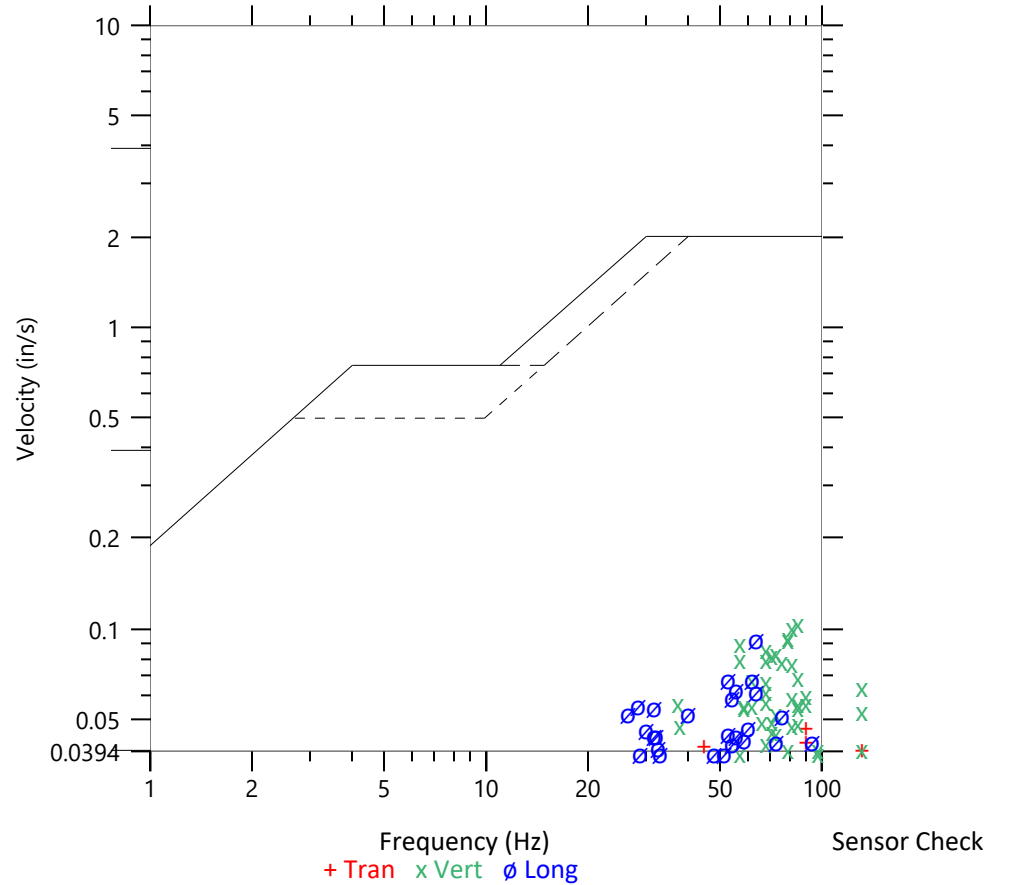
	Tran	Vert	Long
Peak Particle Velocity	0.0484 in/s	0.1058 in/s	0.0946 in/s
Zero Crossing Frequency	89.0 Hz	85.3 Hz	64.0 Hz
Time (Relative to Trigger)	0.451 sec	0.200 sec	0.215 sec
Peak Acceleration	0.082 g	0.158 g	0.095 g
Peak Displacement	0.000 in	0.000 in	0.000 in
Sensor Check	✓ Passed	✓ Passed	✓ Passed
Frequency	7.1 Hz	7.3 Hz	7.7 Hz
Overswing Ratio	3.6	3.2	3.2

Peak Vector Sum 0.1109 in/s at 0.200 sec

ISEE Linear Microphone

Peak Sound Pressure Level 0.000860 psi
 Peak Sound Pressure Level 109.4 dB(L)
 Time (Relative to Trigger) 1.700 sec
 Zero Crossing Frequency 4.8 Hz
 Sensor Check ✓ Passed
 Frequency 19.7 Hz
 Test Amplitude 1467 mv

USBM R18507 And OSMRE
 Velocity versus Frequency (Zero Crossing)



Waveform Trigger Source
Trigger Level(s)
Trigger Level (Mic)
Pre-Trigger/Record Time
Sample Rate
Setup File Name
Operator

Tran at January 25, 2024 11:47:31
 Geo 0.0200 in/s
 Mic 0.01029 psi, 131 dB(L)
 0.50 sec/8.0 sec (Fixed)
 4096 sps
 Spicewood Hwy 71 - Station 2.mmb
 Operator

Serial Number
Model Number
Battery Level
Unit Calibration
Event File Name
USB Sensor Support

UM7306
 Micromate ISEE 10.90GC
 3.8 volts
 August 18, 2023 by Instantel
 UM7306_20240125114731.IDFW
 Disabled

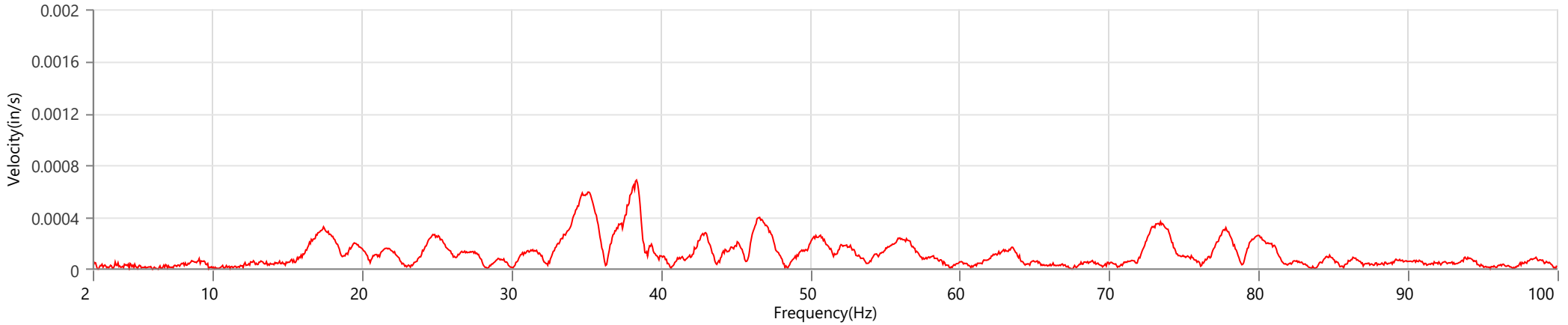
Notes

Location Station 2
 Client Spicewood Crushed Stone
 Company Hwy 71
 General Notes IGS, Inc

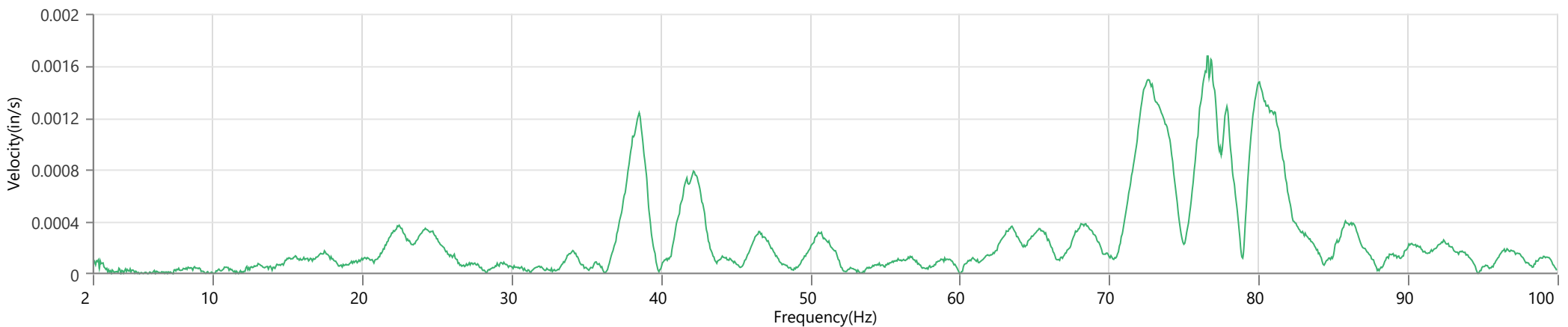
Extended Note N30.49650 W21572

Post Event Notes No text to be displayed.

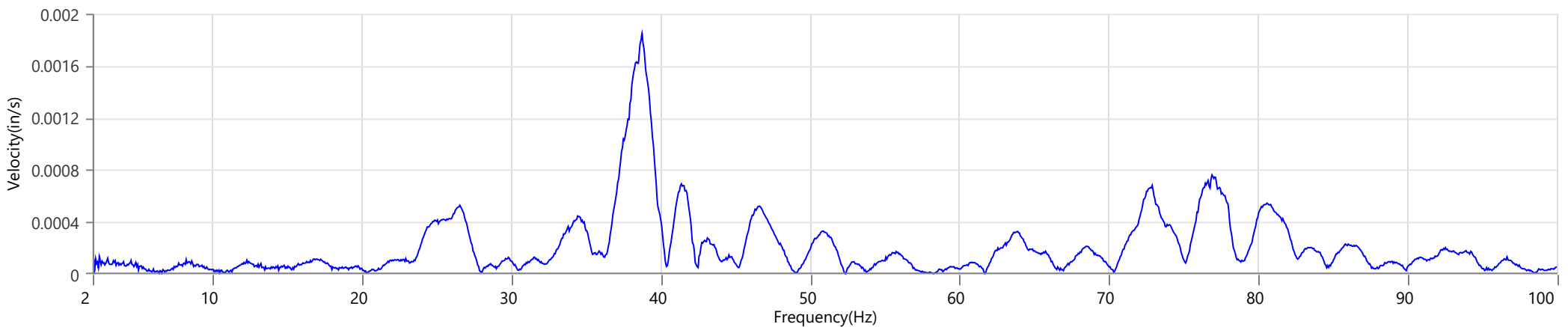
Tran - Dominant Frequency 38.4 Hz, Amplitude 0.0007 in/s (Peak Particle Velocity: 0.0484 in/s)



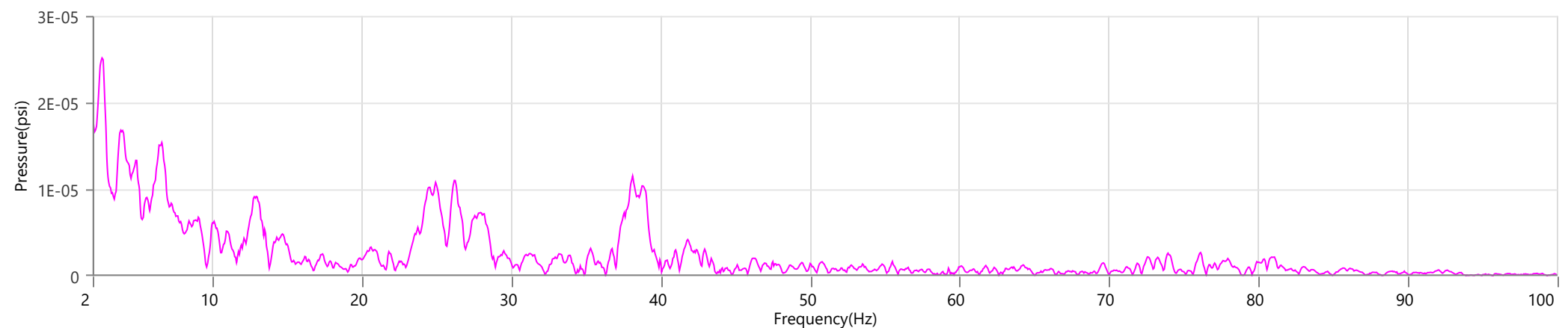
Vert - Dominant Frequency 76.6 Hz, Amplitude 0.0017 in/s (Peak Particle Velocity: 0.1058 in/s)



Long - Dominant Frequency 38.8 Hz, Amplitude 0.0018 in/s (Peak Particle Velocity: 0.0946 in/s)



Mic - Dominant Frequency 2.6 Hz, Amplitude 0.00003 psi (Peak Sound Pressure Level: 0.000860 psi)



Waveform Trigger Source
Trigger Level(s)
Trigger Level (Mic)
Pre-Trigger/Record Time
Sample Rate
Setup File Name
Operator

Long at January 25, 2024 11:47:31
 Geo 0.0200 in/s
 Mic 0.01029 psi, 131 dB(L)
 0.50 sec/8.0 sec (Fixed)
 4096 sps
 Spicewood Hwy 71 - Station 4.mmb
 Operator

Serial Number
Model Number
Battery Level
Unit Calibration
Event File Name
USB Sensor Support

UM7490
 Micromate ISEE 10.90GC
 3.8 volts
 February 23, 2023 by Instantel
 UM7490_20240125114731.IDFW
 Disabled

Notes

Location Station 4
 Client Spicewood Crushed Stone
 Company Hwy 71 Quarry
 General Notes IGS, Inc.

Extended Note N30.49821 W98.21578

Post Event Notes No text to be displayed.

Geophone

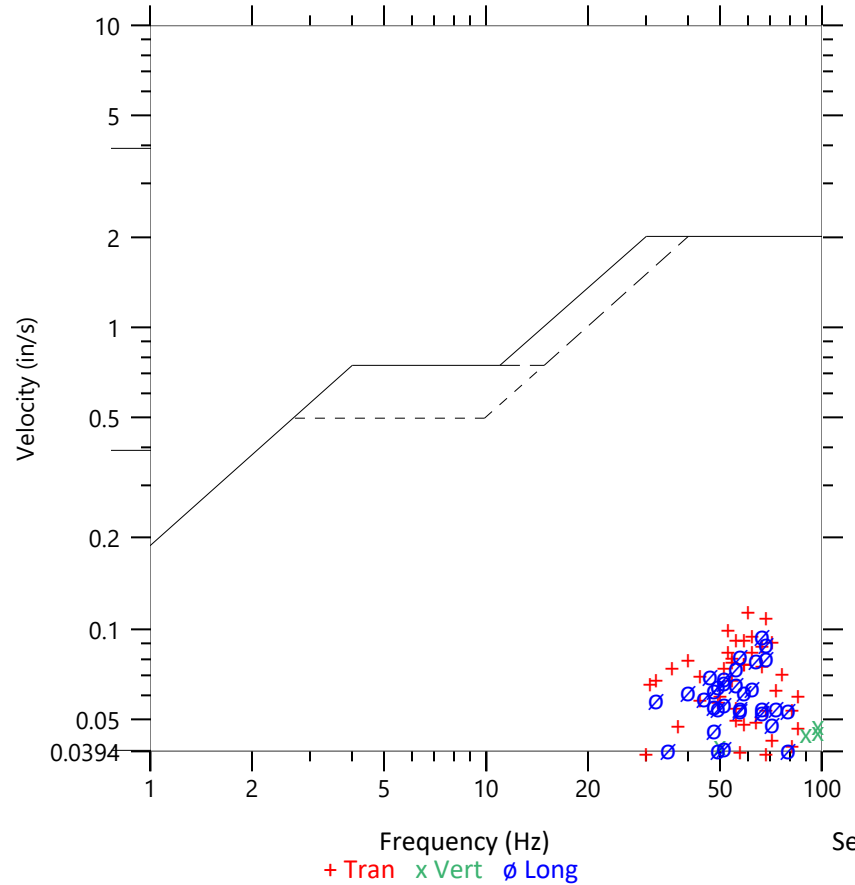
	Tran	Vert	Long
Peak Particle Velocity	0.1170 in/s	0.0487 in/s	0.0971 in/s
Zero Crossing Frequency	60.2 Hz	97.5 Hz	66.1 Hz
Time (Relative to Trigger)	0.176 sec	0.309 sec	0.158 sec
Peak Acceleration	0.145 g	0.072 g	0.102 g
Peak Displacement	0.000 in	0.000 in	0.000 in
Sensor Check	✓ Passed	✓ Passed	✓ Passed
Frequency	7.1 Hz	7.3 Hz	7.5 Hz
Overswing Ratio	4.9	3.8	3.7

Peak Vector Sum 0.1313 in/s at 0.127 sec

ISEE Linear Microphone

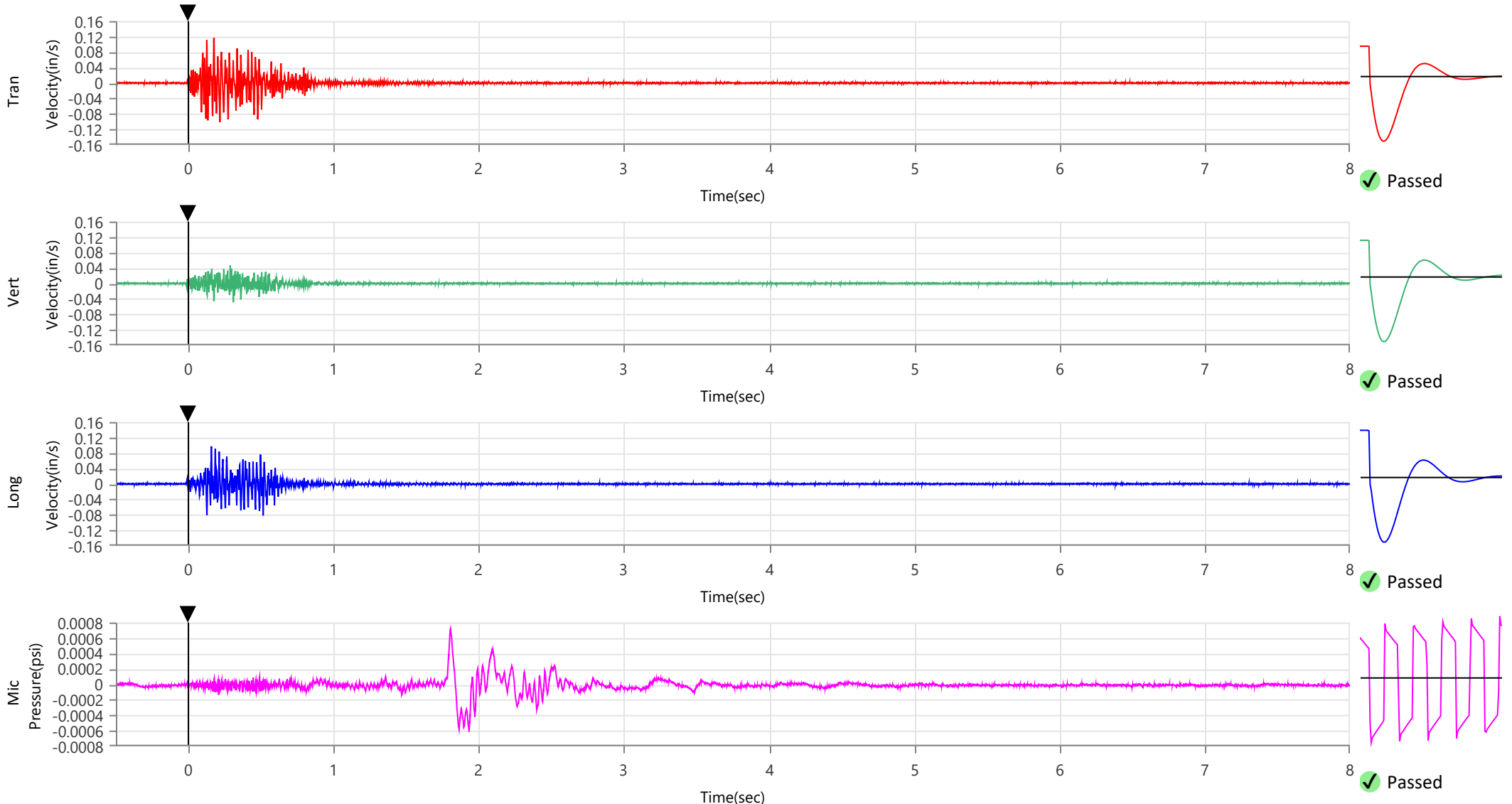
Peak Sound Pressure Level 0.000718 psi
 Peak Sound Pressure Level 107.9 dB(L)
 Time (Relative to Trigger) 1.805 sec
 Zero Crossing Frequency 6.4 Hz
 Sensor Check ✓ Passed
 Frequency 20.5 Hz
 Test Amplitude 1509 mv

USBM R18507 And OSMRE
 Velocity versus Frequency (Zero Crossing)



Sensor Check

+ Tran x Vert o Long



Waveform Trigger Source
Trigger Level(s)
Trigger Level (Mic)
Pre-Trigger/Record Time
Sample Rate
Setup File Name
Operator

Long at January 25, 2024 11:47:31
 Geo 0.0200 in/s
 Mic 0.01029 psi, 131 dB(L)
 0.50 sec/8.0 sec (Fixed)
 4096 sps
 Spicewood Hwy 71 - Station 4.mmb
 Operator

Serial Number
Model Number
Battery Level
Unit Calibration
Event File Name
USB Sensor Support

UM7490
 Micromate ISEE 10.90GC
 3.8 volts
 February 23, 2023 by Instantel
 UM7490_20240125114731.IDFW
 Disabled

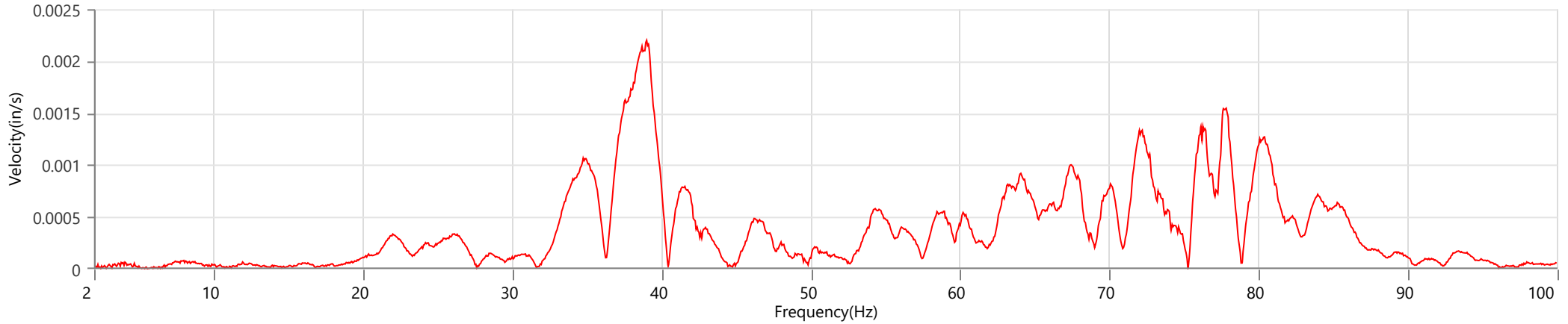
Notes

Location Station 4
 Client Spicewood Crushed Stone
 Company Hwy 71 Quarry
 General Notes IGS, Inc.

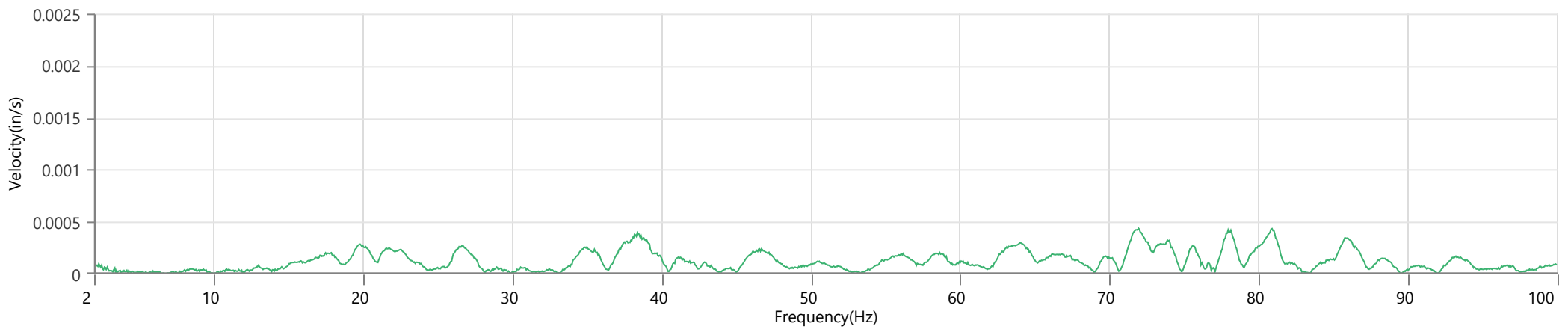
Extended Note N30.49821 W98.21578

Post Event Notes No text to be displayed.

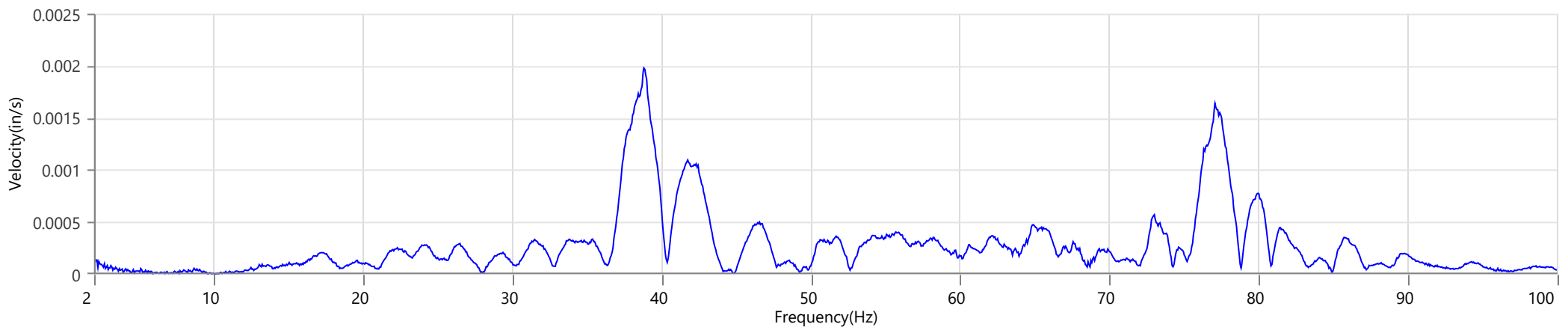
Tran - Dominant Frequency 39.0 Hz, Amplitude 0.0022 in/s (Peak Particle Velocity: 0.1170 in/s)



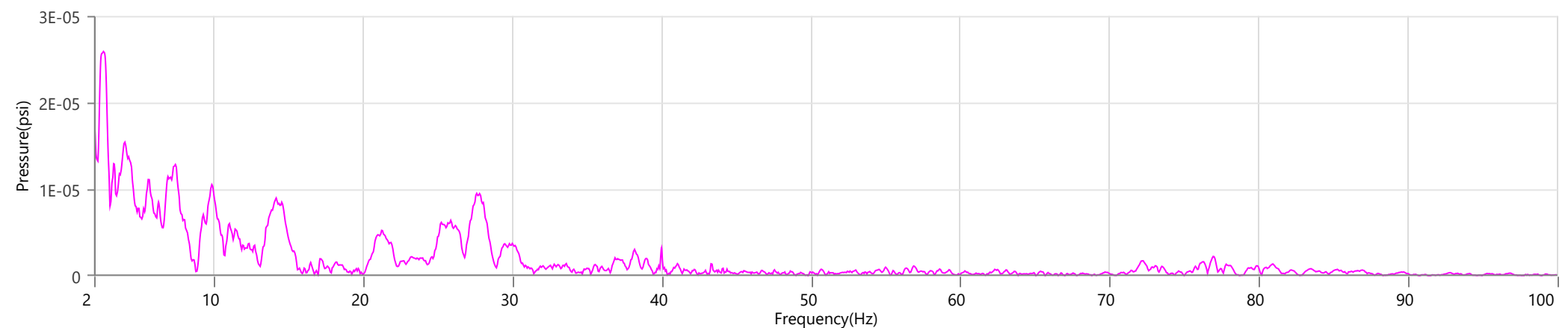
Vert - Dominant Frequency 71.9 Hz, Amplitude 0.0004 in/s (Peak Particle Velocity: 0.0487 in/s)



Long - Dominant Frequency 38.8 Hz, Amplitude 0.0020 in/s (Peak Particle Velocity: 0.0971 in/s)



Mic - Dominant Frequency 2.6 Hz, Amplitude 0.00003 psi (Peak Sound Pressure Level: 0.000718 psi)



Waveform Trigger Source
Trigger Level(s)
Trigger Level (Mic)
Pre-Trigger/Record Time
Sample Rate
Setup File Name
Operator

Long at January 25, 2024 11:47:31
 Geo 0.0200 in/s
 Mic 0.01029 psi, 131 dB(L)
 0.50 sec/8.0 sec (Fixed)
 4096 sps
 Spicewood Hwy 71 - Station 5.mmb
 Operator

Serial Number
Model Number
Battery Level
Unit Calibration
Event File Name
USB Sensor Support

UM7409
 Micromate ISEE 10.90GC
 3.8 volts
 June 27, 2023 by Instantel
 UM7409_20240125114731.IDFW
 Disabled

Notes

Location Station 5
 Client Spicewood Crushed Stone
 Company Hwy 71 Quarry
 General Notes IGS, Inc.

Extended Note N30.49911 W98.21538

Post Event Notes No text to be displayed.

Geophone

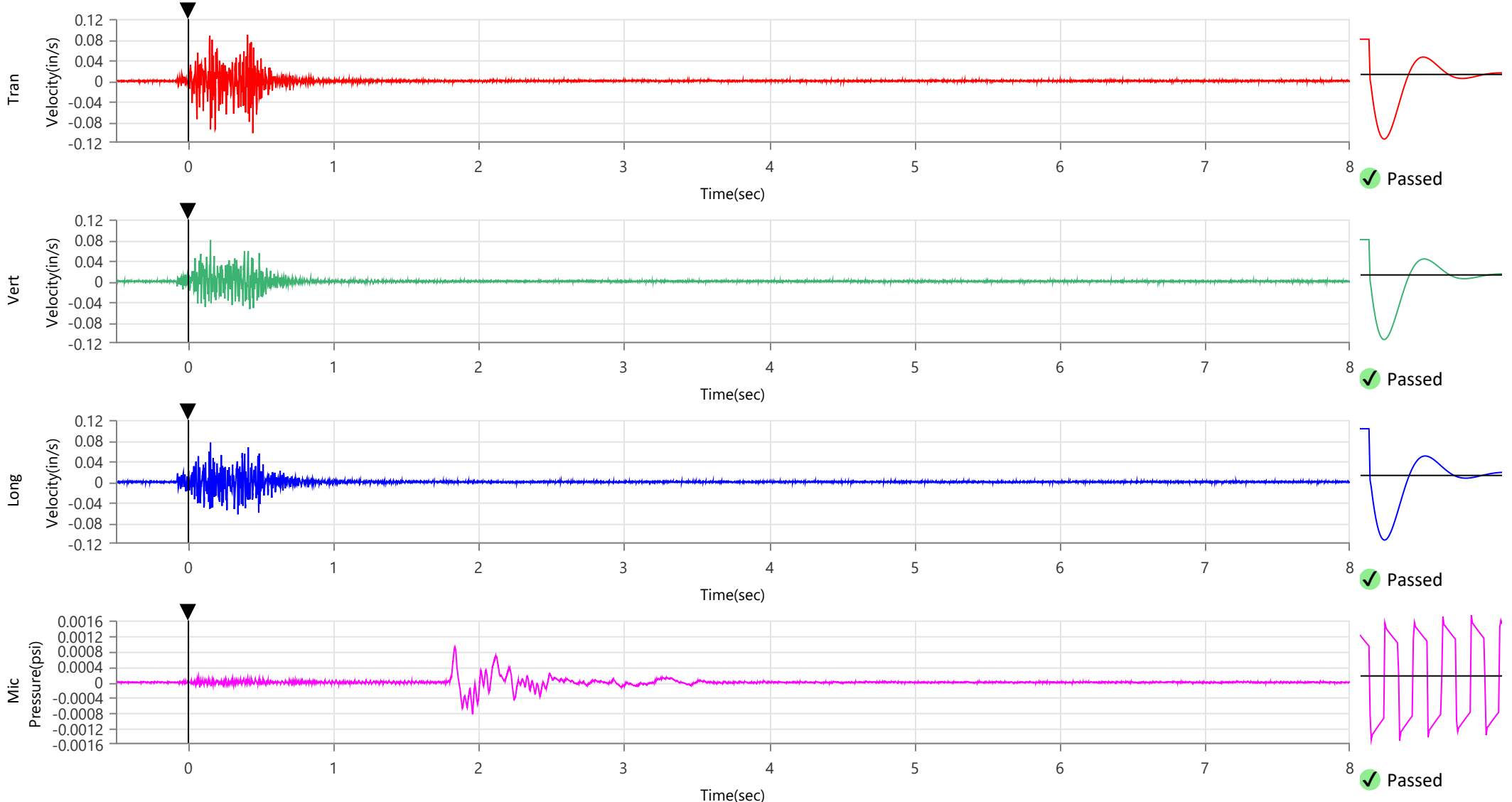
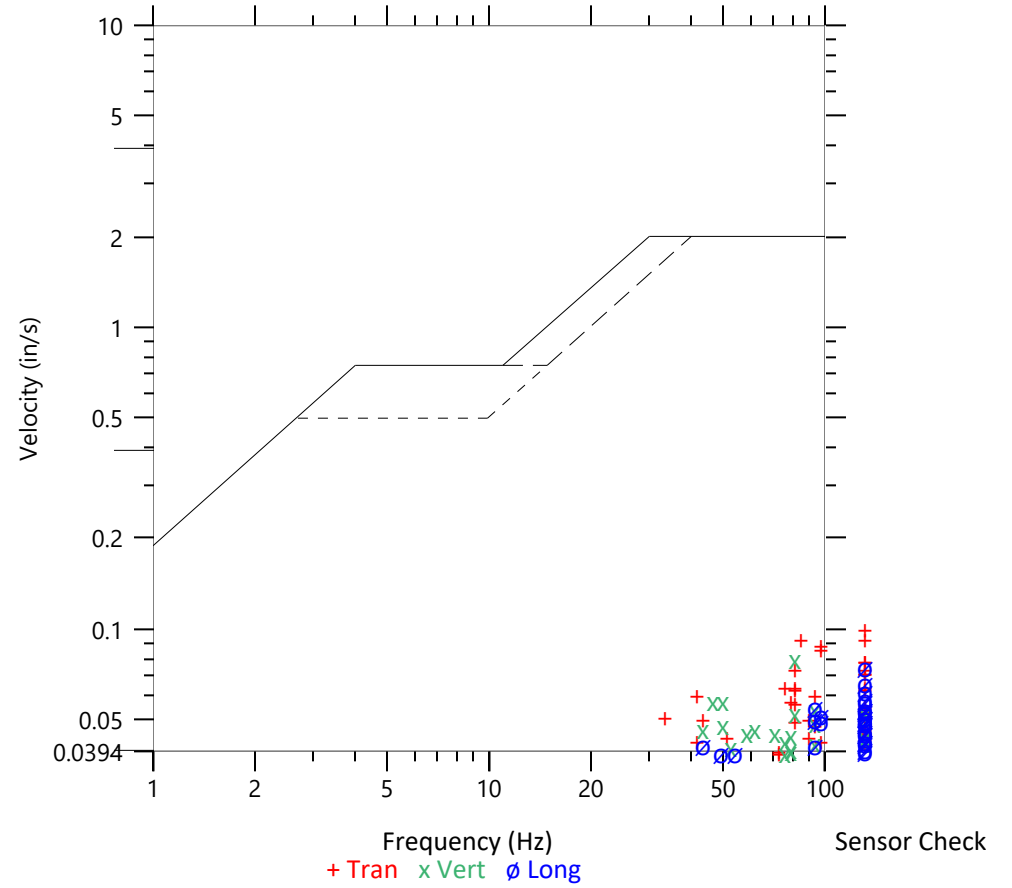
	Tran	Vert	Long
Peak Particle Velocity	0.1015 in/s	0.0801 in/s	0.0760 in/s
Zero Crossing Frequency	>100 Hz	81.9 Hz	>100 Hz
Time (Relative to Trigger)	0.444 sec	0.152 sec	0.152 sec
Peak Acceleration	0.158 g	0.128 g	0.142 g
Peak Displacement	0.000 in	0.000 in	0.000 in
Sensor Check	✓ Passed	✓ Passed	✓ Passed
Frequency	7.5 Hz	7.3 Hz	7.3 Hz
Overswing Ratio	3.7	4.0	3.3

Peak Vector Sum 0.1452 in/s at 0.152 sec

ISEE Linear Microphone

Peak Sound Pressure Level 0.000920 psi
 Peak Sound Pressure Level 110.0 dB(L)
 Time (Relative to Trigger) 1.836 sec
 Zero Crossing Frequency 6.5 Hz
 Sensor Check ✓ Passed
 Frequency 19.7 Hz
 Test Amplitude 1456 mv

USBM R18507 And OSMRE
 Velocity versus Frequency (Zero Crossing)



Waveform Trigger Source
Trigger Level(s)
Trigger Level (Mic)
Pre-Trigger/Record Time
Sample Rate
Setup File Name
Operator

Long at January 25, 2024 11:47:31
 Geo 0.0200 in/s
 Mic 0.01029 psi, 131 dB(L)
 0.50 sec/8.0 sec (Fixed)
 4096 sps
 Spicewood Hwy 71 - Station 5.mmb
 Operator

Serial Number
Model Number
Battery Level
Unit Calibration
Event File Name
USB Sensor Support

UM7409
 Micromate ISEE 10.90GC
 3.8 volts
 June 27, 2023 by Instantel
 UM7409_20240125114731.IDFW
 Disabled

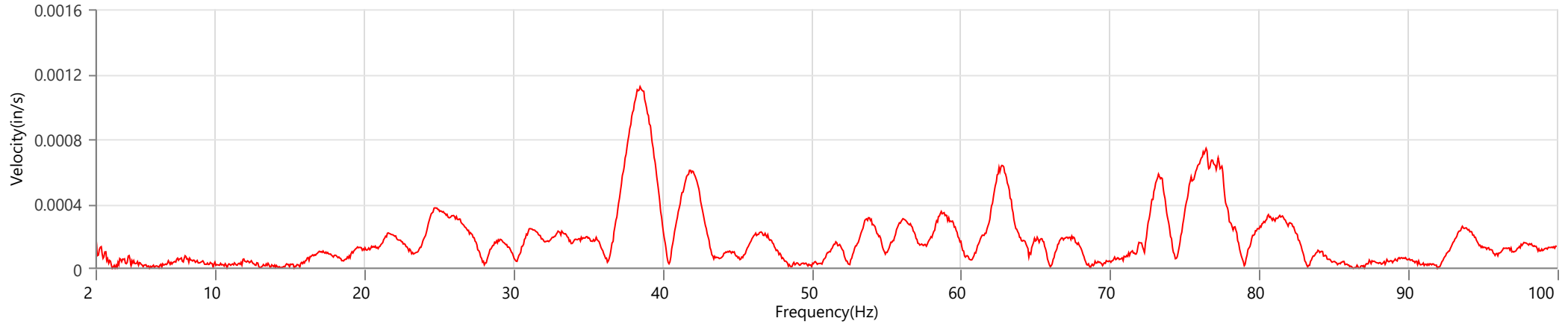
Notes

Location Station 5
 Client Spicewood Crushed Stone
 Company Hwy 71 Quarry
 General Notes IGS, Inc.

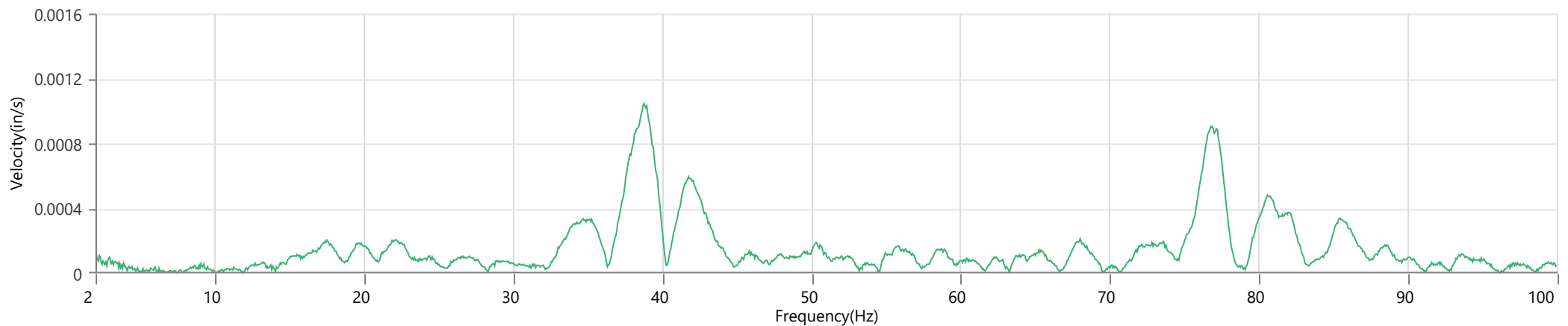
Extended Note N30.49911 W98.21538

Post Event Notes No text to be displayed.

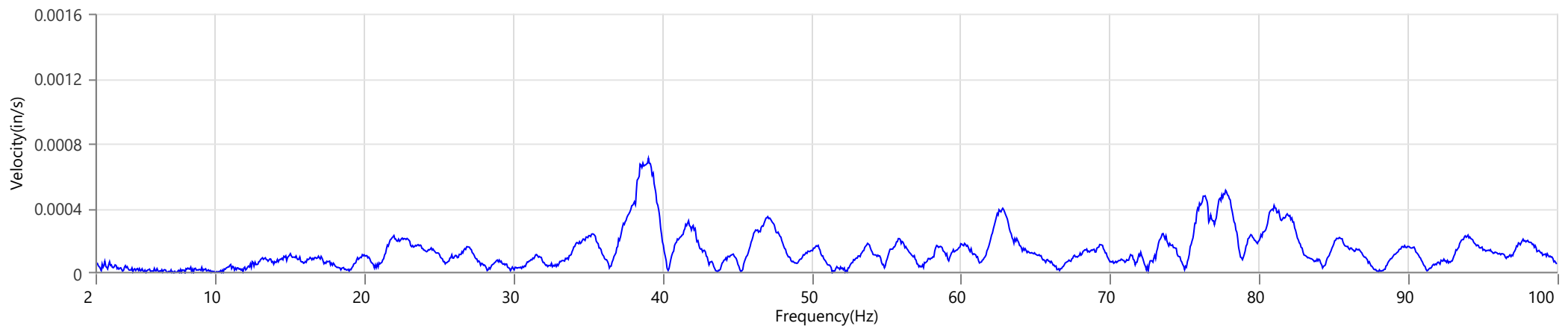
Tran - Dominant Frequency 38.5 Hz, Amplitude 0.0011 in/s (Peak Particle Velocity: 0.1015 in/s)



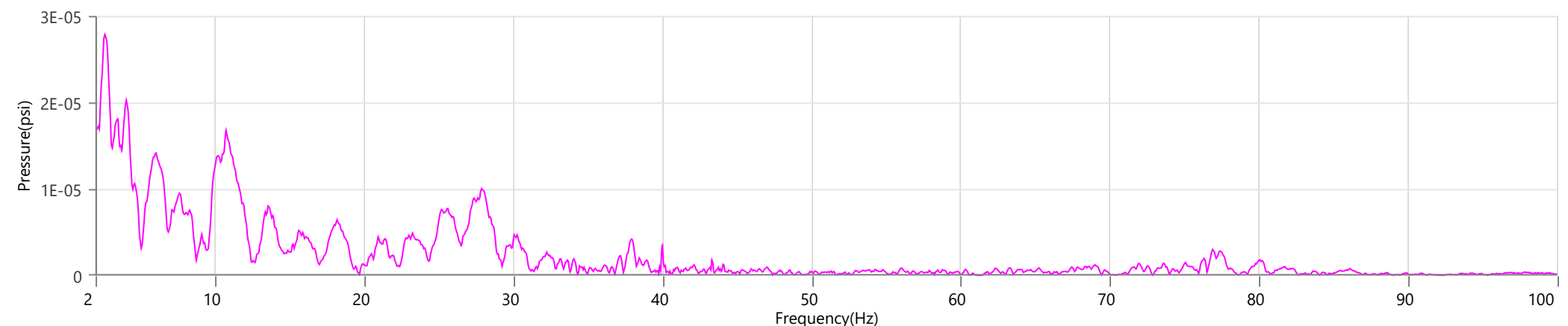
Vert - Dominant Frequency 38.8 Hz, Amplitude 0.0010 in/s (Peak Particle Velocity: 0.0801 in/s)



Long - Dominant Frequency 39.1 Hz, Amplitude 0.0007 in/s (Peak Particle Velocity: 0.0760 in/s)



Mic - Dominant Frequency 2.6 Hz, Amplitude 0.00003 psi (Peak Sound Pressure Level: 0.000920 psi)



Start January 25, 2024 00:00:05
Finish January 25, 2024 23:29:59
Number of Intervals/Interval 1409.91/60 sec
Sample Rate 4096 sps
Setup File Name Spicewood Hwy 71 - Noise 2.mmb
Operator Operator

Serial Number UM11630
Model Number Micromate ISEE 10.90GC
Battery Level 3.8 volts
Unit Calibration June 19, 2023 by Instantel
Microphone Calibration UA10154, March 2, 2023 by Instantel
Event File Name UM11630_20240125000005.IDFH
USB Sensor Support Disabled

Notes
Location Noise 2
Client Spicewood Crushed Stone
Company Hwy 71 Quarry
General Notes IGS, Inc.

Extended Note Station 5N30.49911 W98.21538

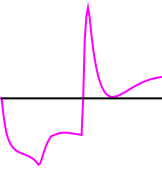
Post Event Notes No text to be displayed.

Sound Level Microphone

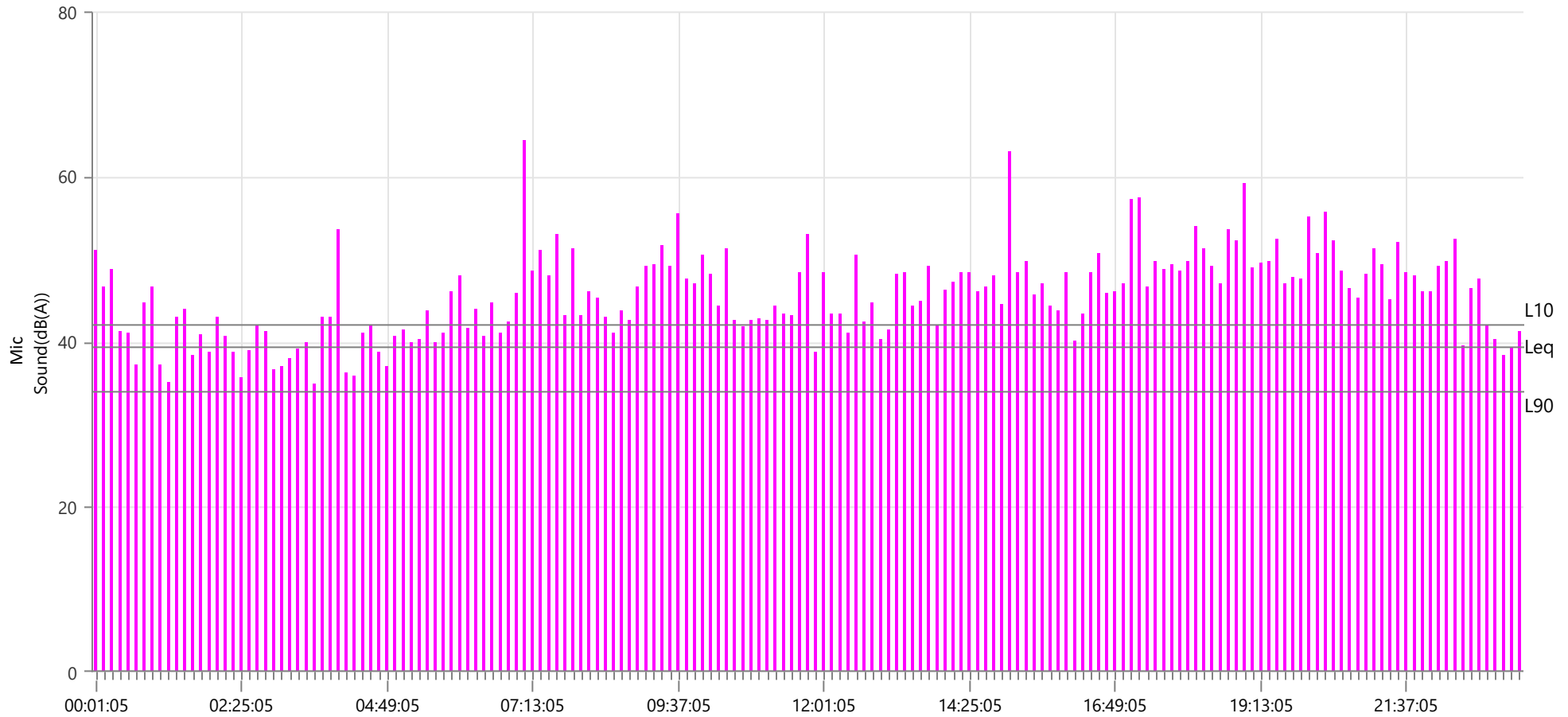
LMax 64.3 dB(A)
Date Jan 25, 2024
Time 07:05:05

	LMin	L10	L90	Leq
Sound(dB(A))	32.3	42	34	39.3
Sensor Check	✓ Passed			
Test Amplitude	1064 mv			

Sensor Check



✓ Passed



Start January 25, 2024 00:00:05
Finish January 25, 2024 23:29:59
Number of Intervals/Interval 1409.91/60 sec
Sample Rate 4096 sps
Setup File Name Spicewood Hwy 71 - Noise 3.mmb
Operator Operator

Serial Number UM11574
Model Number Micromate ISEE 10.90GC
Battery Level 3.7 volts
Unit Calibration June 28, 2023 by Instantel
Microphone Calibration UA10761, July 29, 2022 by Instantel
Event File Name UM11574_20240125000005.IDFH
USB Sensor Support Disabled

Notes
Location Noise 3
Client Spicewood Crushed Stone
Company Hwy 71 Quarry
General Notes IGS, Inc.

Extended Note N30.490958 W98.213495

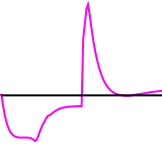
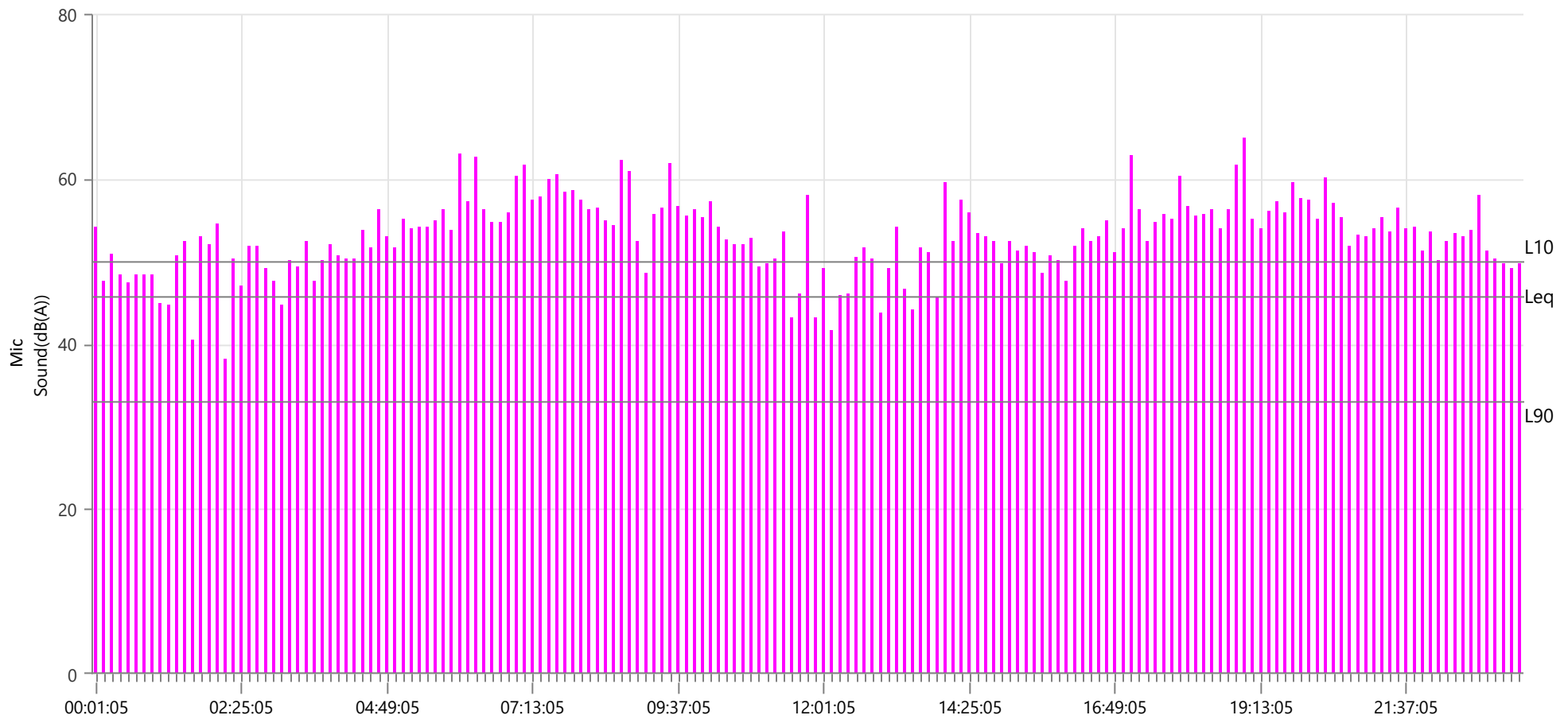
Post Event Notes No text to be displayed.

Sound Level Microphone

LMax 64.9 dB(A)
Date Jan 25, 2024
Time 18:59:05

	LMin	L10	L90	Leq
Sound(dB(A))	30.9	50	33	45.7
Sensor Check	✓ Passed			
Test Amplitude	1149 mv			

Sensor Check

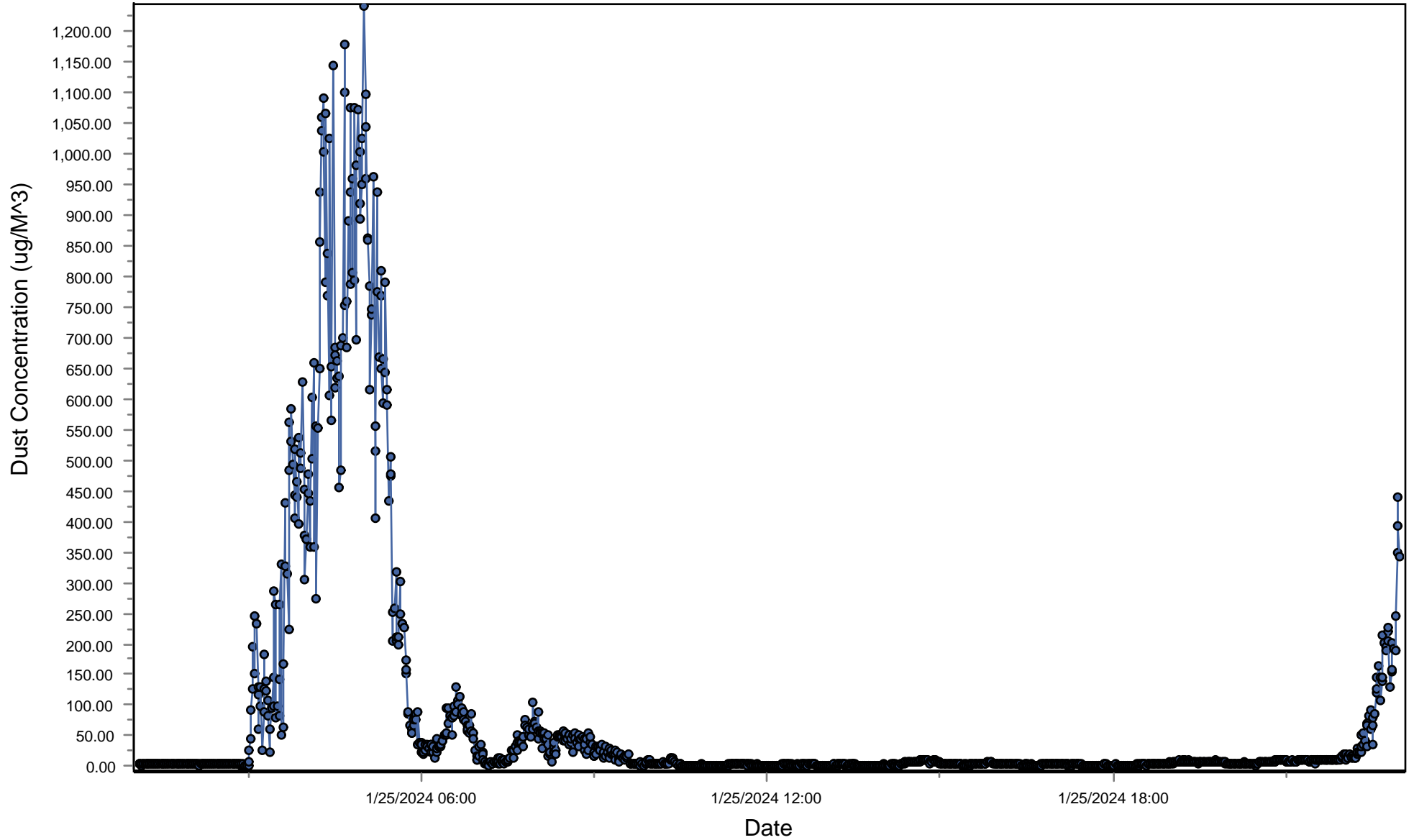


✓ Passed

Spicewood Crushed Stone - Hwy 71 Quarry

South Dust Monitor

● D100@AvgPartL



Spicewood Crushed Stone - Hwy 71 Quarry

North Dust Monitor

● D100@AvgPartL

