

Waveform Trigger Source
Trigger Level(s)
Trigger Level (Mic)
Pre-Trigger/Record Time
Sample Rate
Setup File Name
Operator

Vert at February 23, 2024 10:08:32
 Geo 0.0200 in/s
 Mic 0.01029 psi, 131 dB(L)
 0.50 sec/8.0 sec (Fixed)
 4096 sps
 Spicewood Hwy 71 - Station 1.mmb
 Operator

Serial Number
Model Number
Battery Level
Unit Calibration
Event File Name
USB Sensor Support

UM20119
 Micromate ISEE 10.90GC
 3.8 volts
 April 24, 2023 by Instantel
 UM20119_20240223100832.IDFW
 Disabled

Notes

Location Station 1
 Client Spicewood Crushed Stone
 Company Hwy 71 Quarry
 General Notes IGS, Inc.

Extended Note N30.49572 W98.21577

Post Event Notes No text to be displayed.

Geophone

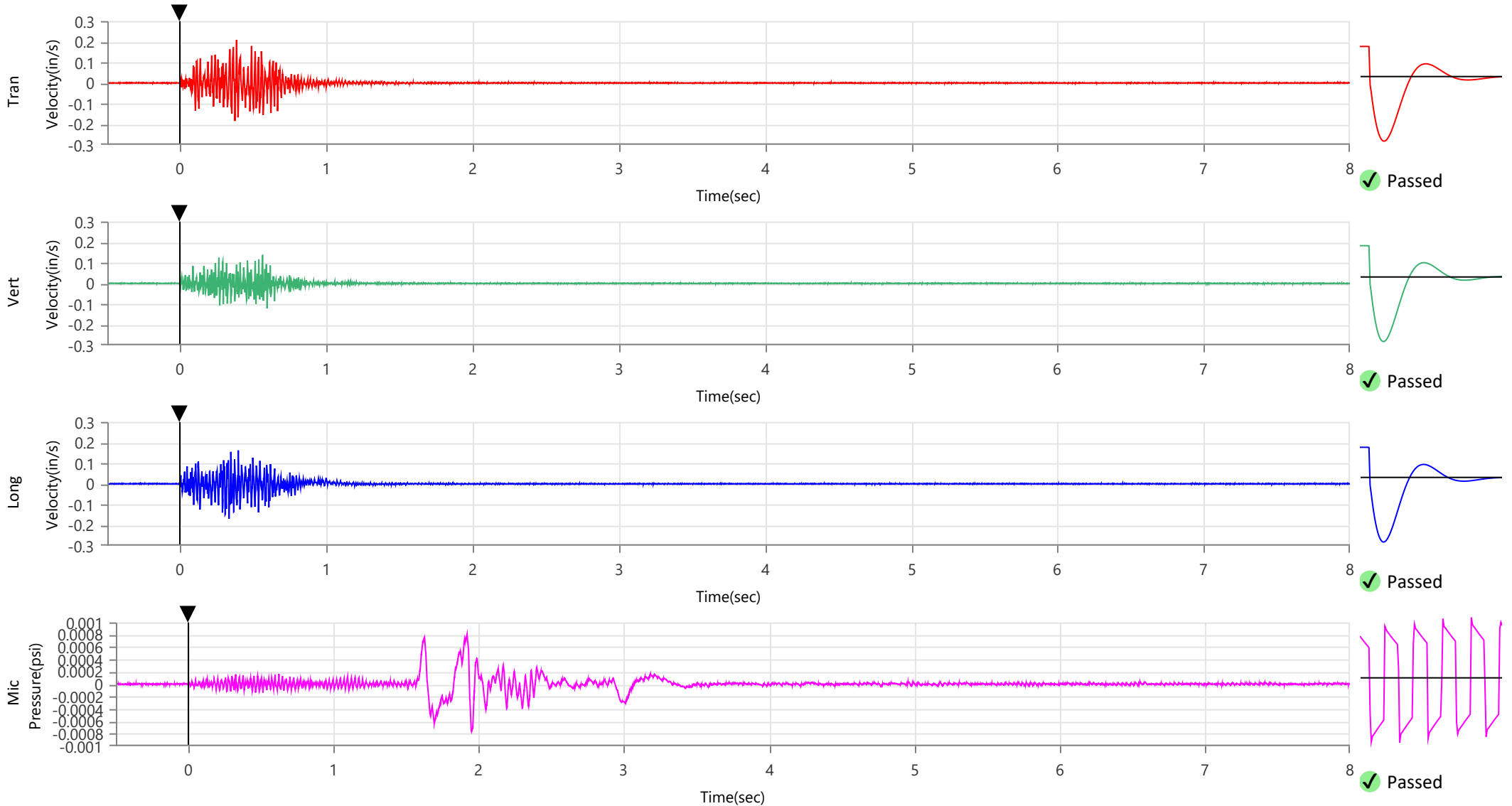
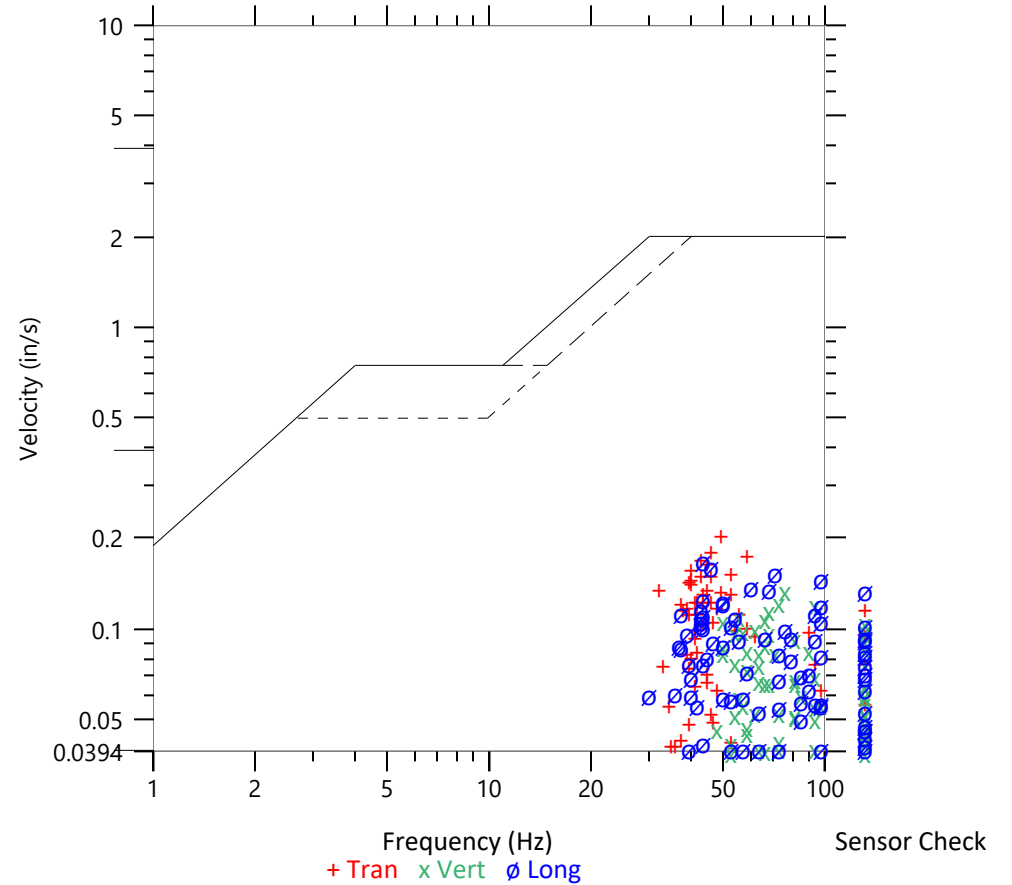
	Tran	Vert	Long
Peak Particle Velocity	0.2088 in/s	0.1356 in/s	0.1697 in/s
Zero Crossing Frequency	48.8 Hz	75.9 Hz	43.6 Hz
Time (Relative to Trigger)	0.384 sec	0.562 sec	0.333 sec
Peak Acceleration	0.250 g	0.201 g	0.263 g
Peak Displacement	0.001 in	0.000 in	0.000 in
Sensor Check	✓ Passed	✓ Passed	✓ Passed
Frequency	6.9 Hz	7.3 Hz	7.3 Hz
Overswing Ratio	5.0	4.5	4.9

Peak Vector Sum 0.2432 in/s at 0.384 sec

ISEE Linear Microphone

Peak Sound Pressure Level 0.000799 psi
 Peak Sound Pressure Level 108.8 dB(L)
 Time (Relative to Trigger) 1.919 sec
 Zero Crossing Frequency 4.6 Hz
 Sensor Check ✓ Passed
 Frequency 19.7 Hz
 Test Amplitude 1461 mv

USBM R18507 And OSMRE
 Velocity versus Frequency (Zero Crossing)



Waveform Trigger Source
Trigger Level(s)
Trigger Level (Mic)
Pre-Trigger/Record Time
Sample Rate
Setup File Name
Operator

Vert at February 23, 2024 10:08:32
 Geo 0.0200 in/s
 Mic 0.01029 psi, 131 dB(L)
 0.50 sec/8.0 sec (Fixed)
 4096 sps
 Spicewood Hwy 71 - Station 1.mmb
 Operator

Serial Number
Model Number
Battery Level
Unit Calibration
Event File Name
USB Sensor Support

UM20119
 Micromate ISEE 10.90GC
 3.8 volts
 April 24, 2023 by InstanTel
 UM20119_20240223100832.IDFW
 Disabled

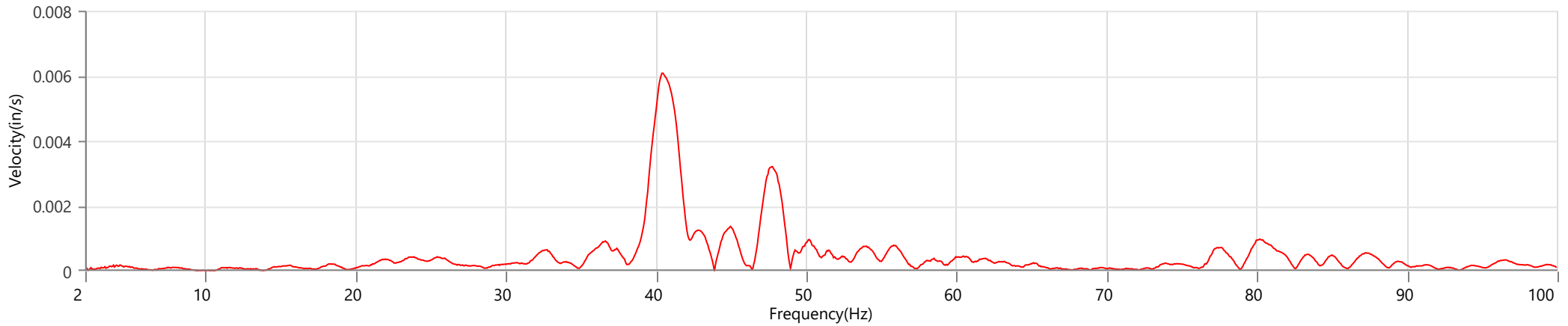
Notes

Location Station 1
 Client Spicewood Crushed Stone
 Company Hwy 71 Quarry
 General Notes IGS, Inc.

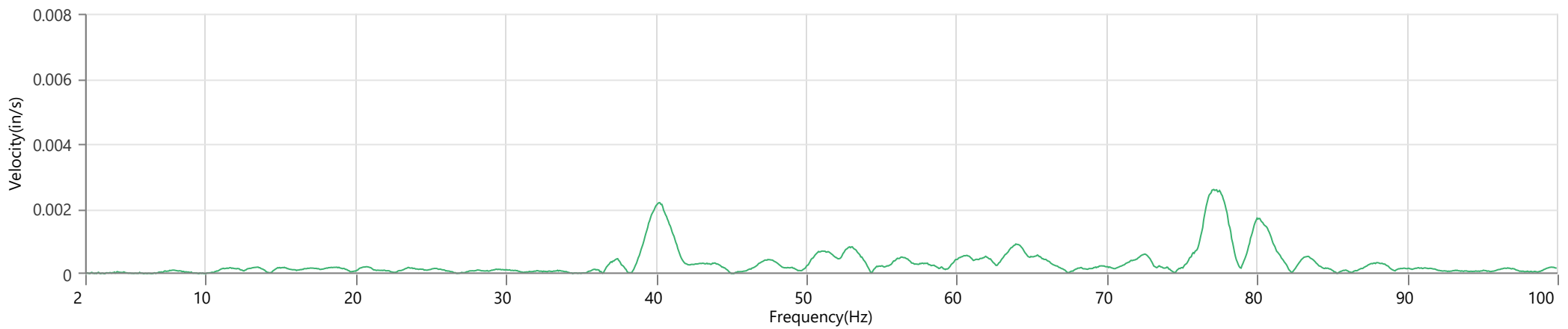
Extended Note N30.49572 W98.21577

Post Event Notes No text to be displayed.

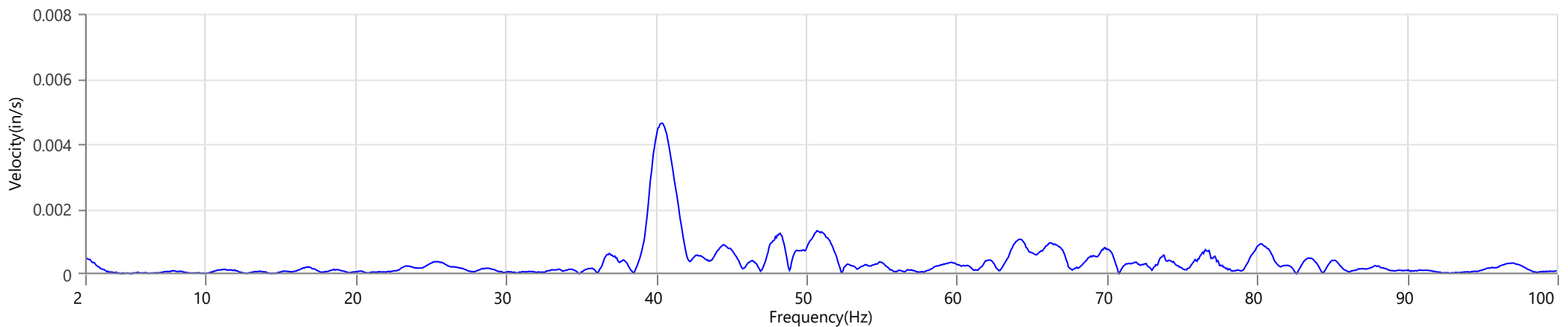
Tran - Dominant Frequency 40.4 Hz, Amplitude 0.0061 in/s (Peak Particle Velocity: 0.2088 in/s)



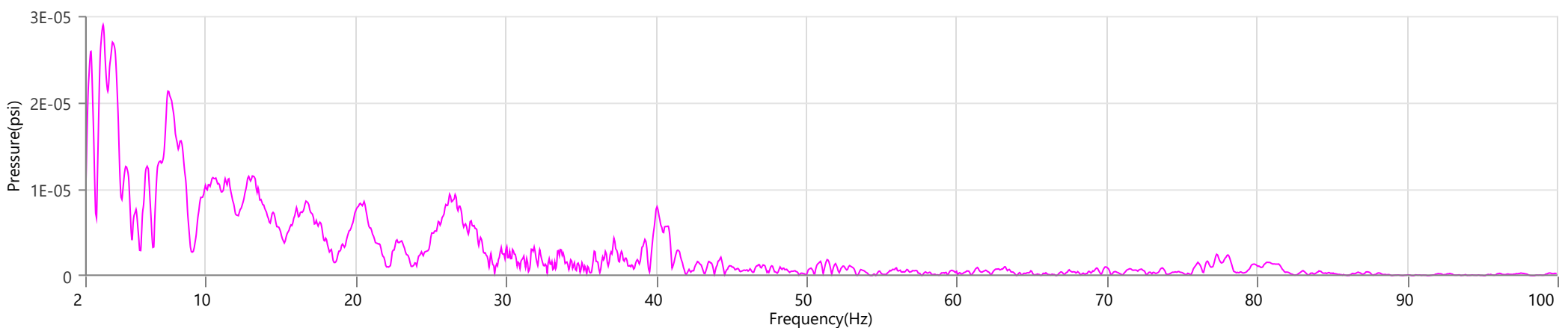
Vert - Dominant Frequency 77.1 Hz, Amplitude 0.0026 in/s (Peak Particle Velocity: 0.1356 in/s)



Long - Dominant Frequency 40.4 Hz, Amplitude 0.0046 in/s (Peak Particle Velocity: 0.1697 in/s)



Mic - Dominant Frequency 3.2 Hz, Amplitude 0.00003 psi (Peak Sound Pressure Level: 0.000799 psi)



Waveform Trigger Source
Trigger Level(s)
Trigger Level (Mic)
Pre-Trigger/Record Time
Sample Rate
Setup File Name
Operator

Long at February 23, 2024 10:08:32
 Geo 0.0200 in/s
 Mic 0.01029 psi, 131 dB(L)
 0.50 sec/8.0 sec (Fixed)
 4096 sps
 Spicewood Hwy 71 - Station 2.mmb
 Operator

Serial Number
Model Number
Battery Level
Unit Calibration
Event File Name
USB Sensor Support

UM7306
 Micromate ISEE 10.90GC
 3.8 volts
 August 18, 2023 by Instantel
 UM7306_20240223100832.IDFW
 Disabled

Notes

Location Station 2
 Client Spicewood Crushed Stone
 Company Hwy 71
 General Notes IGS, Inc

Extended Note N30.49650 W21572

Post Event Notes No text to be displayed.

Geophone

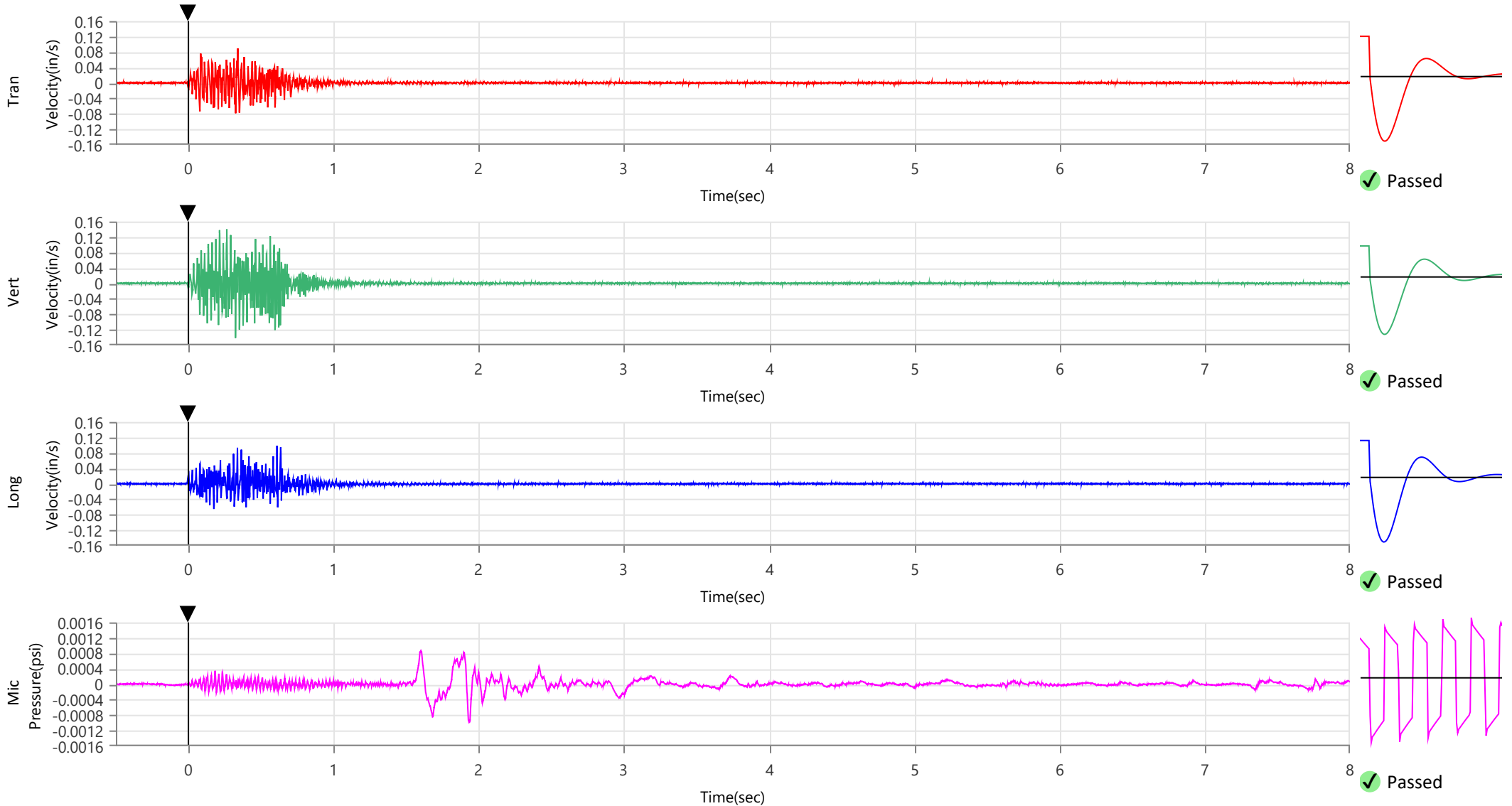
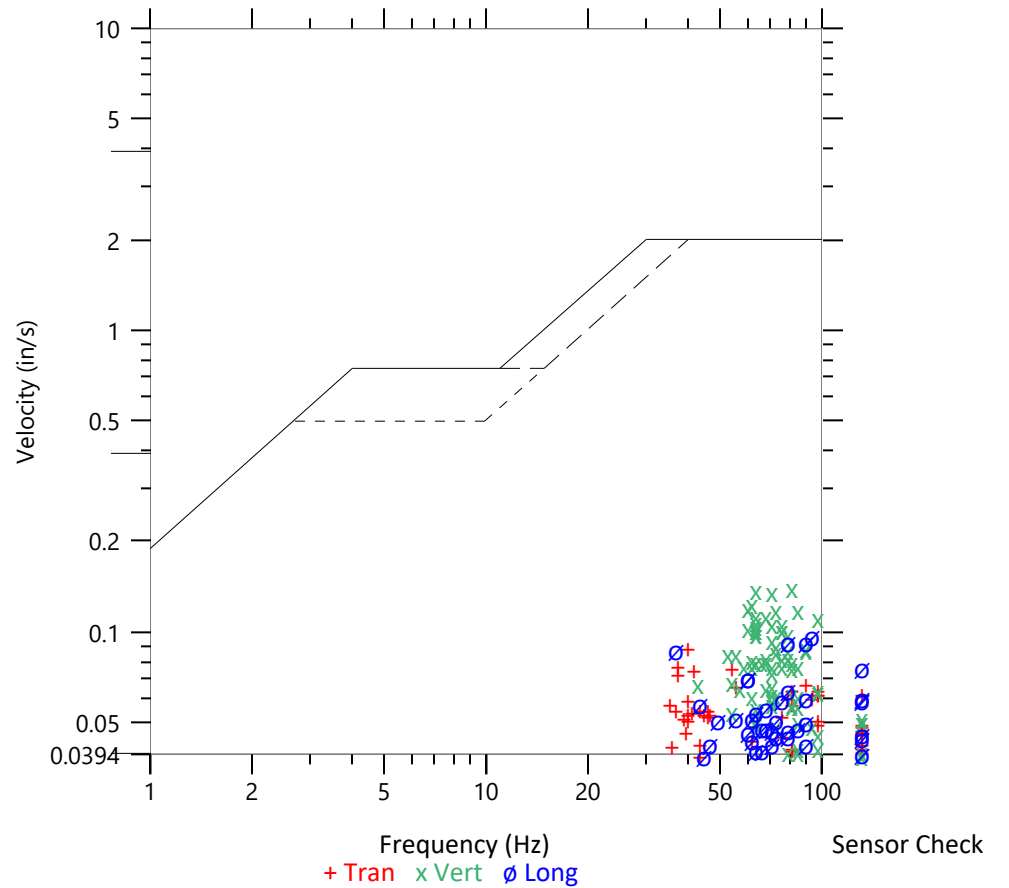
	Tran	Vert	Long
Peak Particle Velocity	0.0894 in/s	0.1412 in/s	0.0987 in/s
Zero Crossing Frequency	40.2 Hz	81.9 Hz	93.1 Hz
Time (Relative to Trigger)	0.341 sec	0.325 sec	0.611 sec
Peak Acceleration	0.155 g	0.191 g	0.155 g
Peak Displacement	0.000 in	0.000 in	0.000 in
Sensor Check	✓ Passed	✓ Passed	✓ Passed
Frequency	7.1 Hz	7.3 Hz	7.7 Hz
Overswing Ratio	3.5	3.2	3.1

Peak Vector Sum 0.1602 in/s at 0.325 sec

ISEE Linear Microphone

Peak Sound Pressure Level 0.000990 psi
 Peak Sound Pressure Level 110.7 dB(L)
 Time (Relative to Trigger) 1.933 sec
 Zero Crossing Frequency 13.2 Hz
 Sensor Check ✓ Passed
 Frequency 19.7 Hz
 Test Amplitude 1467 mv

USBM R18507 And OSMRE
 Velocity versus Frequency (Zero Crossing)



Waveform Trigger Source
Trigger Level(s)
Trigger Level (Mic)
Pre-Trigger/Record Time
Sample Rate
Setup File Name
Operator

Long at February 23, 2024 10:08:32
 Geo 0.0200 in/s
 Mic 0.01029 psi, 131 dB(L)
 0.50 sec/8.0 sec (Fixed)
 4096 sps
 Spicewood Hwy 71 - Station 2.mmb
 Operator

Serial Number
Model Number
Battery Level
Unit Calibration
Event File Name
USB Sensor Support

UM7306
 Micromate ISEE 10.90GC
 3.8 volts
 August 18, 2023 by Instantel
 UM7306_20240223100832.IDFW
 Disabled

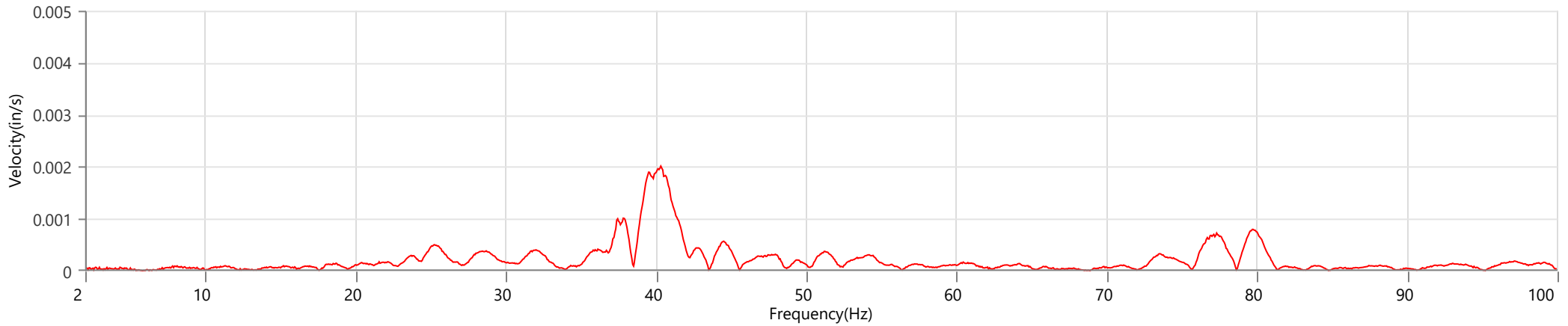
Notes

Location Station 2
 Client Spicewood Crushed Stone
 Company Hwy 71
 General Notes IGS, Inc

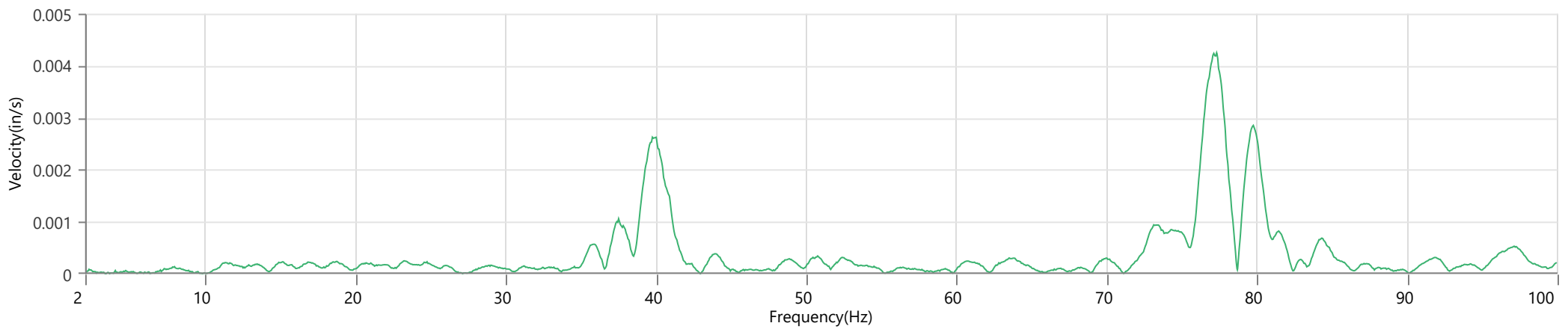
Extended Note N30.49650 W21572

Post Event Notes No text to be displayed.

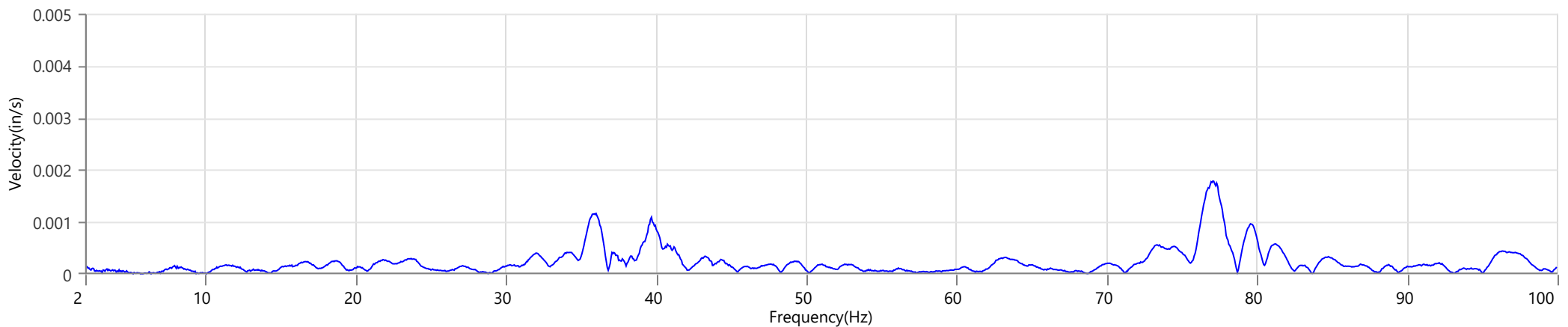
Tran - Dominant Frequency 40.3 Hz, Amplitude 0.0020 in/s (Peak Particle Velocity: 0.0894 in/s)



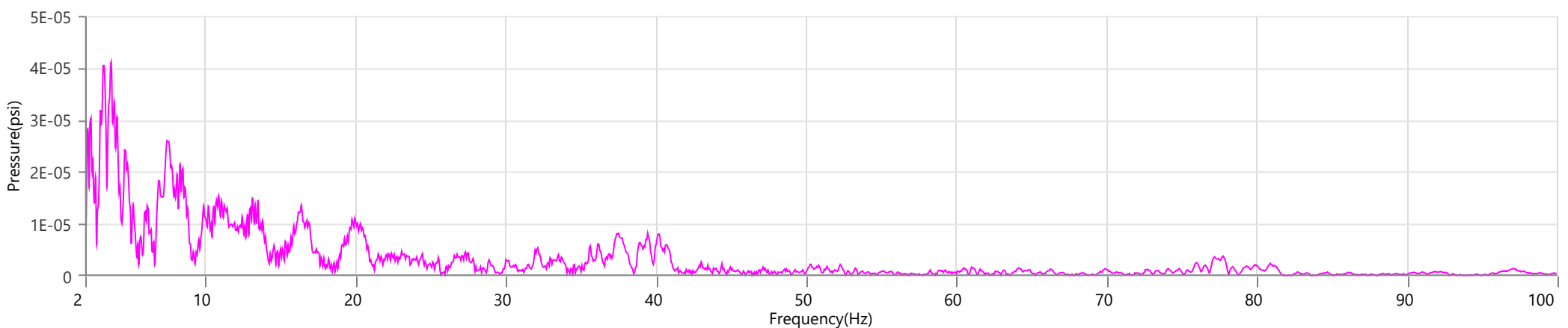
Vert - Dominant Frequency 77.3 Hz, Amplitude 0.0042 in/s (Peak Particle Velocity: 0.1412 in/s)



Long - Dominant Frequency 77.1 Hz, Amplitude 0.0018 in/s (Peak Particle Velocity: 0.0987 in/s)



Mic - Dominant Frequency 3.7 Hz, Amplitude 0.00004 psi (Peak Sound Pressure Level: 0.000990 psi)



Waveform Trigger Source
Trigger Level(s)
Trigger Level (Mic)
Pre-Trigger/Record Time
Sample Rate
Setup File Name
Operator

Vert at February 23, 2024 10:08:33
 Geo 0.0200 in/s
 Mic 0.01029 psi, 131 dB(L)
 0.50 sec/8.0 sec (Fixed)
 4096 sps
 Spicewood Hwy 71 - Station 3.mmb
 Operator

Serial Number
Model Number
Battery Level
Unit Calibration
Event File Name
USB Sensor Support

UM20082
 Micromate ISEE 10.90GC
 3.8 volts
 May 19, 2023 by Instantel
 UM20082_20240223100833.IDFW
 Disabled

Notes

Location Station 3
 Client Spicewood Crushed Stone
 Company Hwy 71 Quarry
 General Notes IGS, Inc.

Extended Note N30.49742 W98.21566

Post Event Notes No text to be displayed.

Geophone

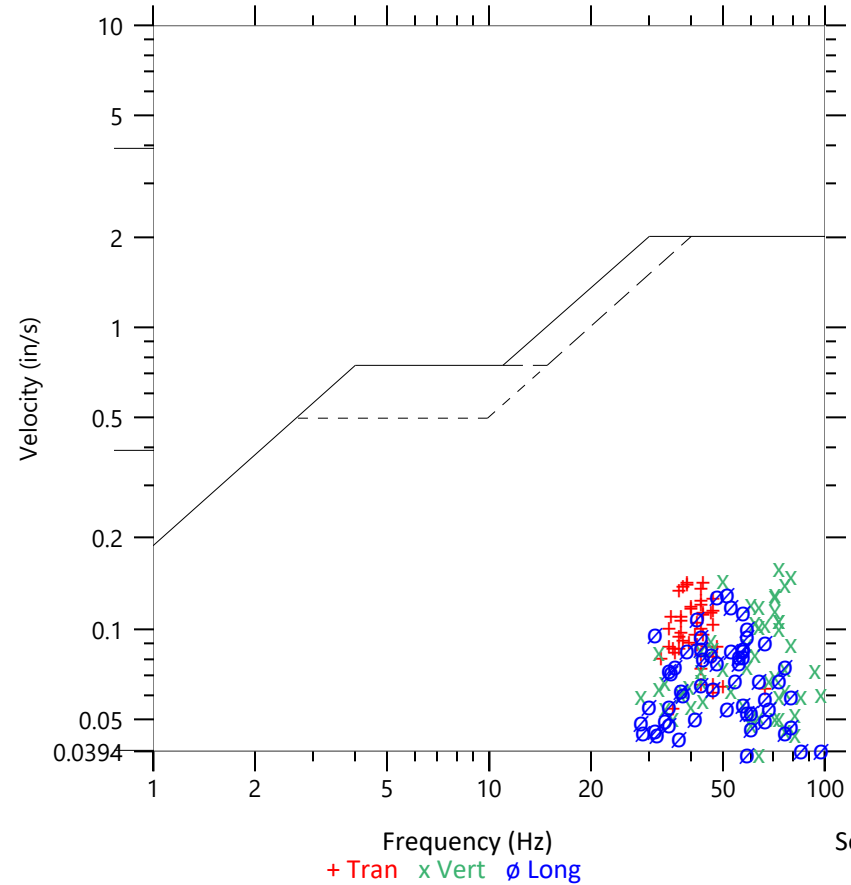
	Tran	Vert	Long
Peak Particle Velocity	0.1465 in/s	0.1632 in/s	0.1334 in/s
Zero Crossing Frequency	38.6 Hz	73.1 Hz	51.2 Hz
Time (Relative to Trigger)	0.478 sec	0.416 sec	0.363 sec
Peak Acceleration	0.155 g	0.184 g	0.151 g
Peak Displacement	0.000 in	0.000 in	0.000 in
Sensor Check	✓ Passed	✓ Passed	✓ Passed
Frequency	7.3 Hz	7.5 Hz	7.3 Hz
Overswing Ratio	4.4	4.1	4.3

Peak Vector Sum 0.1897 in/s at 0.336 sec

ISEE Linear Microphone

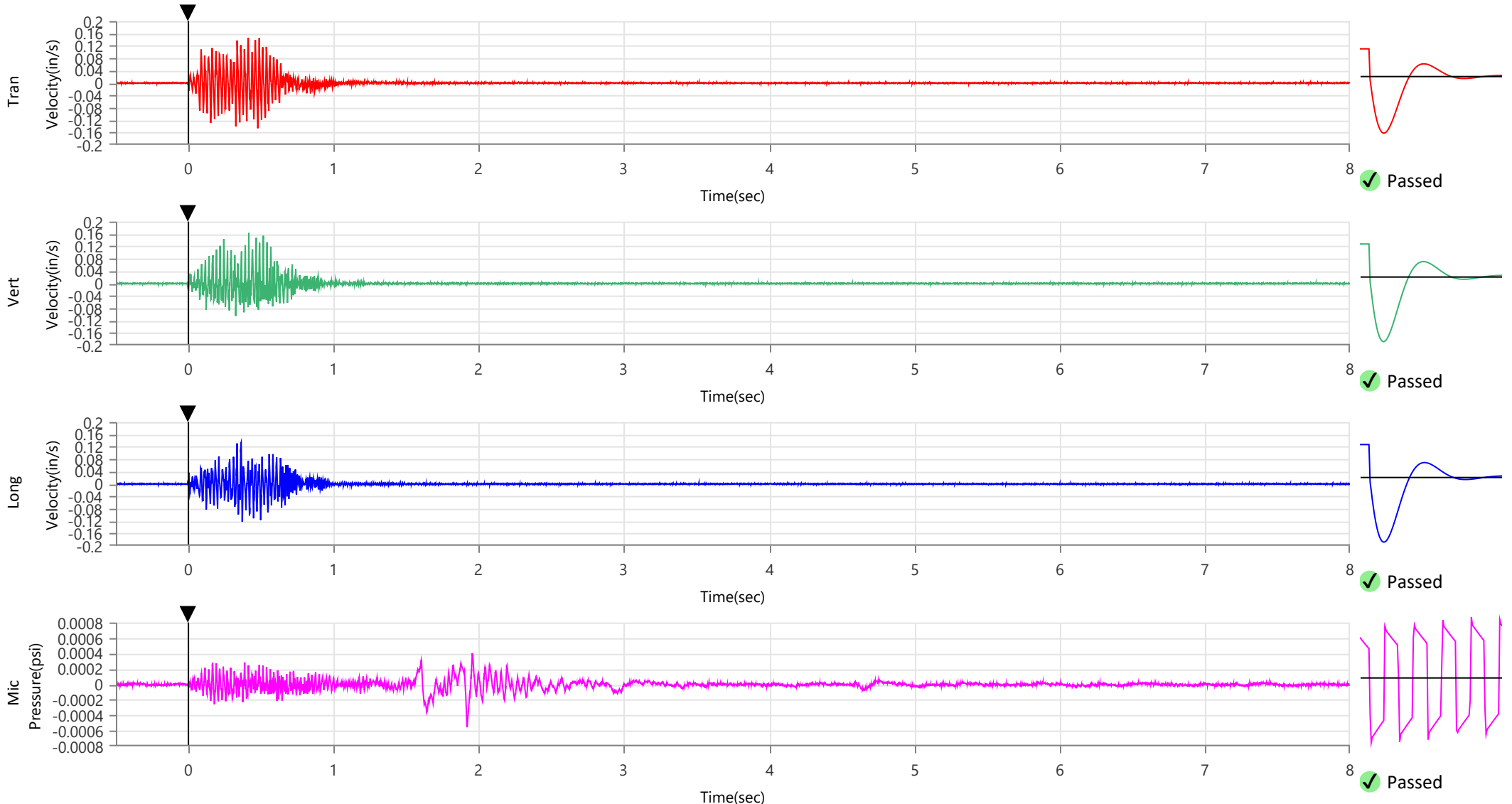
Peak Sound Pressure Level 0.000556 psi
 Peak Sound Pressure Level 105.6 dB(L)
 Time (Relative to Trigger) 1.919 sec
 Zero Crossing Frequency 13.1 Hz
 Sensor Check ✓ Passed
 Frequency 19.7 Hz
 Test Amplitude 1462 mv

USBM R18507 And OSMRE
 Velocity versus Frequency (Zero Crossing)



Sensor Check

+ Tran x Vert o Long



Waveform Trigger Source
Trigger Level(s)
Trigger Level (Mic)
Pre-Trigger/Record Time
Sample Rate
Setup File Name
Operator

Vert at February 23, 2024 10:08:33
 Geo 0.0200 in/s
 Mic 0.01029 psi, 131 dB(L)
 0.50 sec/8.0 sec (Fixed)
 4096 sps
 Spicewood Hwy 71 - Station 3.mmb
 Operator

Serial Number
Model Number
Battery Level
Unit Calibration
Event File Name
USB Sensor Support

UM20082
 Micromate ISEE 10.90GC
 3.8 volts
 May 19, 2023 by Instantel
 UM20082_20240223100833.IDFW
 Disabled

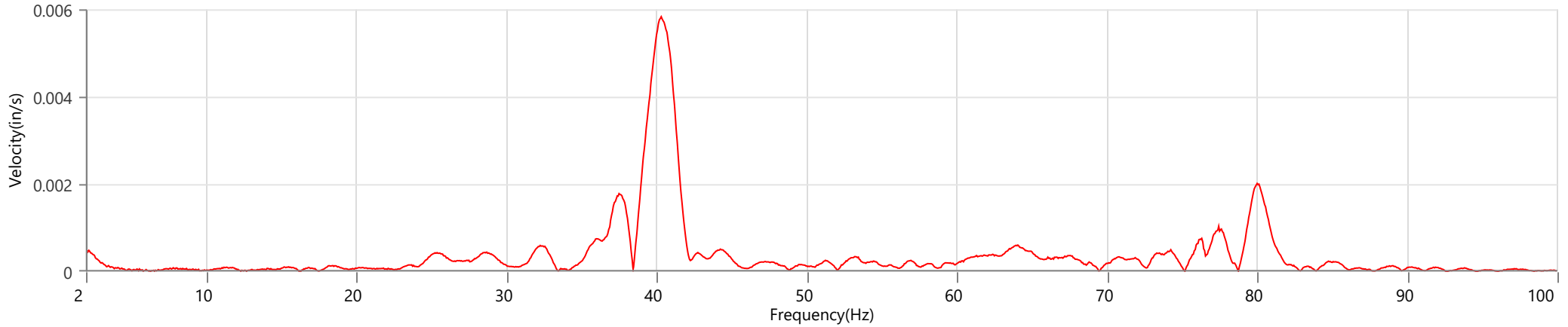
Notes

Location Station 3
 Client Spicewood Crushed Stone
 Company Hwy 71 Quarry
 General Notes IGS, Inc.

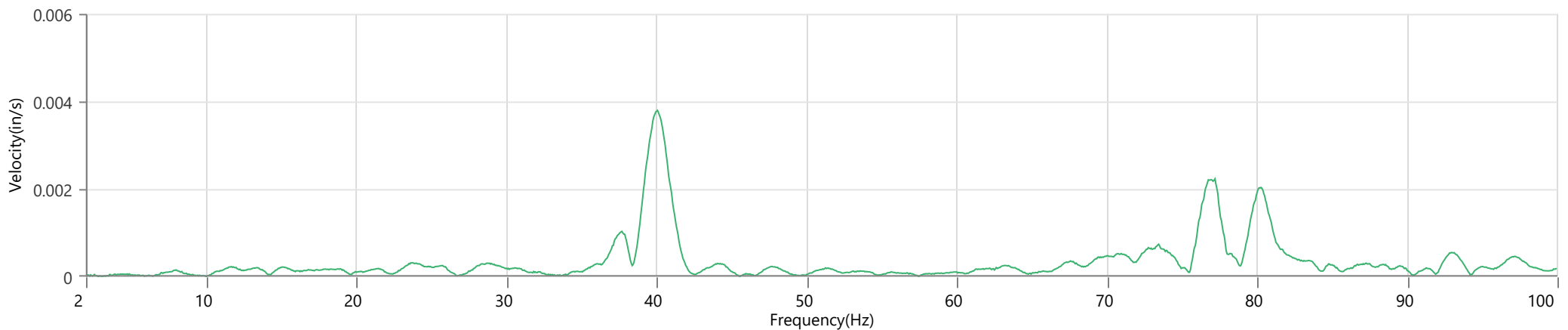
Extended Note N30.49742 W98.21566

Post Event Notes No text to be displayed.

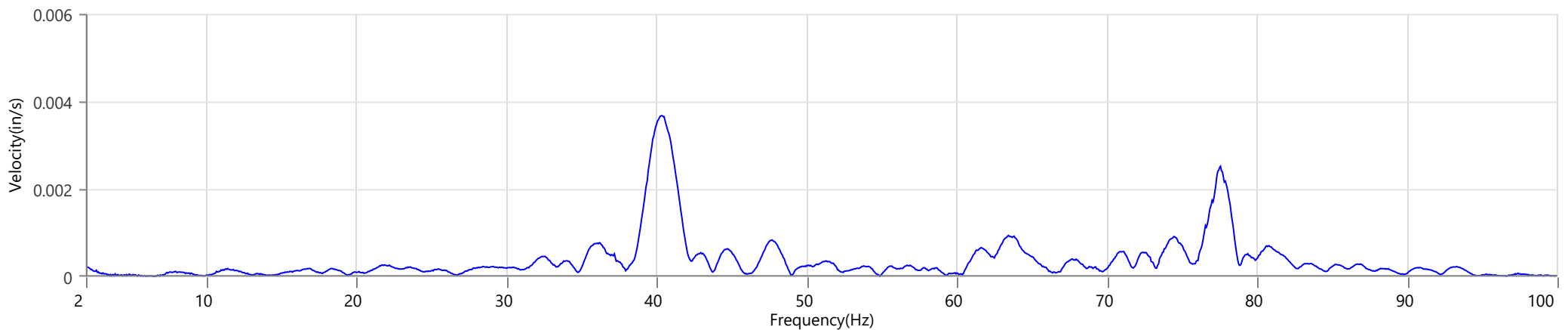
Tran - Dominant Frequency 40.3 Hz, Amplitude 0.0058 in/s (Peak Particle Velocity: 0.1465 in/s)



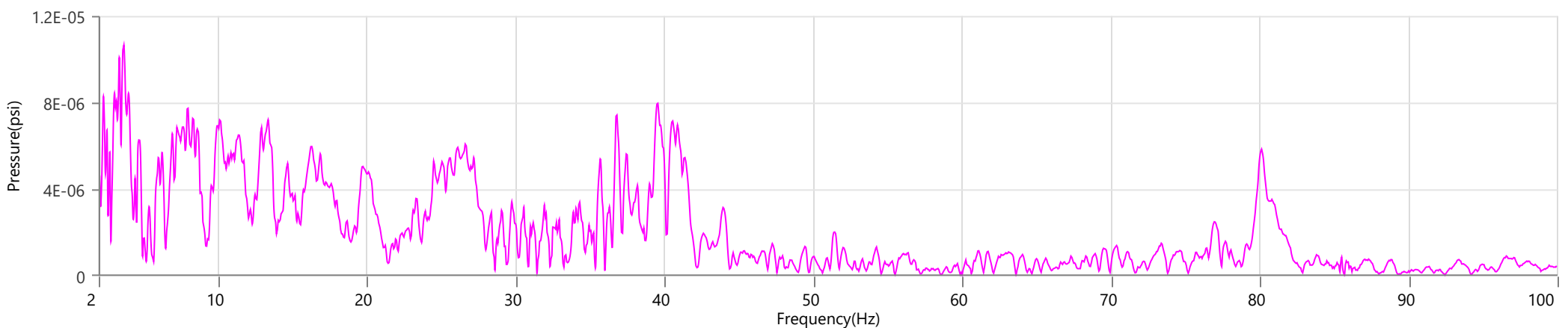
Vert - Dominant Frequency 40.1 Hz, Amplitude 0.0038 in/s (Peak Particle Velocity: 0.1632 in/s)



Long - Dominant Frequency 40.4 Hz, Amplitude 0.0037 in/s (Peak Particle Velocity: 0.1334 in/s)



Mic - Dominant Frequency 3.7 Hz, Amplitude 0.00001 psi (Peak Sound Pressure Level: 0.000556 psi)



Waveform Trigger Source
Trigger Level(s)
Trigger Level (Mic)
Pre-Trigger/Record Time
Sample Rate
Setup File Name
Operator

Vert at February 23, 2024 10:08:33
 Geo 0.0200 in/s
 Mic 0.01029 psi, 131 dB(L)
 0.50 sec/8.0 sec (Fixed)
 4096 sps
 Spicewood Hwy 71 - Station 4.mmb
 Operator

Serial Number
Model Number
Battery Level
Unit Calibration
Event File Name
USB Sensor Support

UM7490
 Micromate ISEE 10.90GC
 3.8 volts
 February 23, 2023 by Instantel
 UM7490_20240223100833.IDFW
 Disabled

Notes

Location Station 4
 Client Spicewood Crushed Stone
 Company Hwy 71 Quarry
 General Notes IGS, Inc.

Extended Note N30.49821 W98.21578

Post Event Notes No text to be displayed.

Geophone

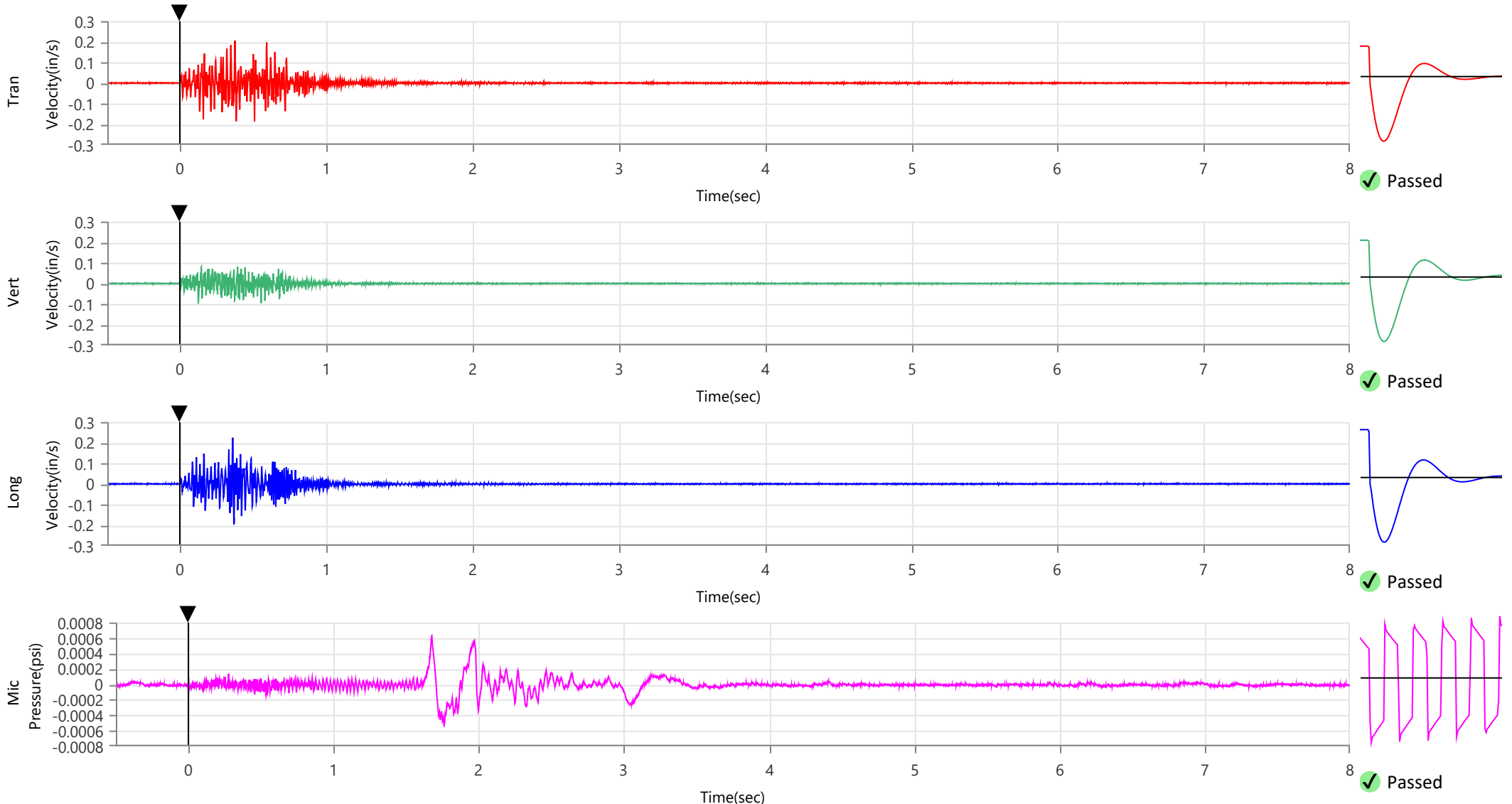
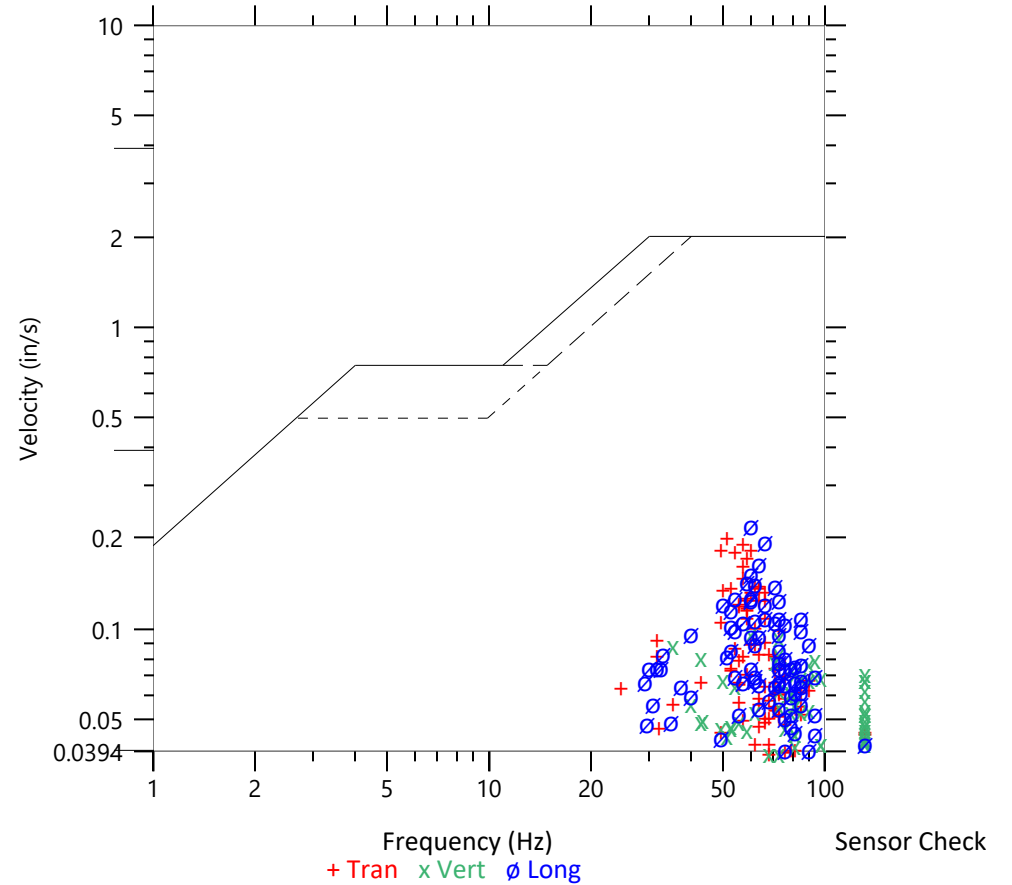
	Tran	Vert	Long
Peak Particle Velocity	0.2054 in/s	0.0984 in/s	0.2240 in/s
Zero Crossing Frequency	51.2 Hz	60.2 Hz	60.2 Hz
Time (Relative to Trigger)	0.373 sec	0.124 sec	0.358 sec
Peak Acceleration	0.184 g	0.151 g	0.220 g
Peak Displacement	0.001 in	0.000 in	0.001 in
Sensor Check	✓ Passed	✓ Passed	✓ Passed
Frequency	7.1 Hz	7.3 Hz	7.5 Hz
Overswing Ratio	4.9	3.8	3.6

Peak Vector Sum 0.2314 in/s at 0.373 sec

ISEE Linear Microphone

Peak Sound Pressure Level 0.000626 psi
 Peak Sound Pressure Level 106.7 dB(L)
 Time (Relative to Trigger) 1.677 sec
 Zero Crossing Frequency 5.8 Hz
 Sensor Check ✓ Passed
 Frequency 20.5 Hz
 Test Amplitude 1492 mv

USBM R18507 And OSMRE
 Velocity versus Frequency (Zero Crossing)



Waveform Trigger Source
Trigger Level(s)
Trigger Level (Mic)
Pre-Trigger/Record Time
Sample Rate
Setup File Name
Operator

Vert at February 23, 2024 10:08:33
 Geo 0.0200 in/s
 Mic 0.01029 psi, 131 dB(L)
 0.50 sec/8.0 sec (Fixed)
 4096 sps
 Spicewood Hwy 71 - Station 4.mmb
 Operator

Serial Number
Model Number
Battery Level
Unit Calibration
Event File Name
USB Sensor Support

UM7490
 Micromate ISEE 10.90GC
 3.8 volts
 February 23, 2023 by Instantel
 UM7490_20240223100833.IDFW
 Disabled

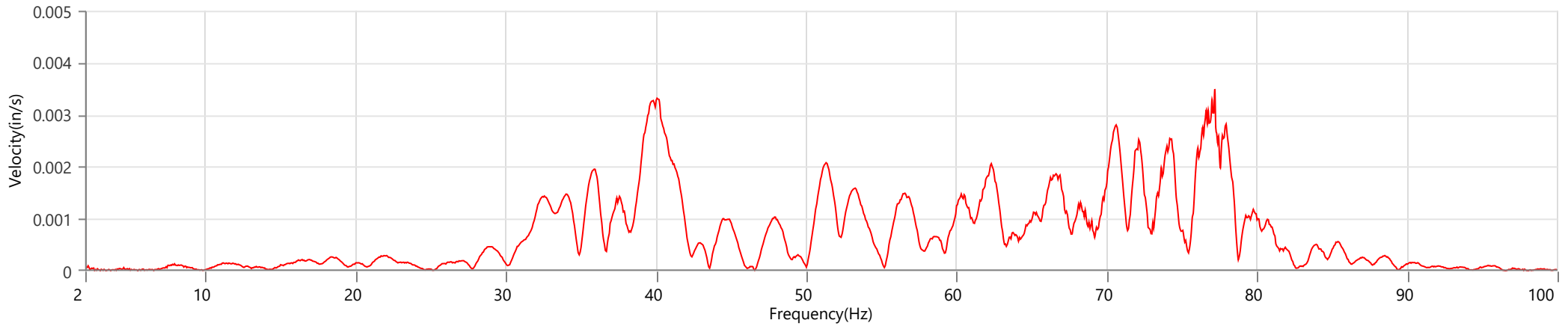
Notes

Location Station 4
 Client Spicewood Crushed Stone
 Company Hwy 71 Quarry
 General Notes IGS, Inc.

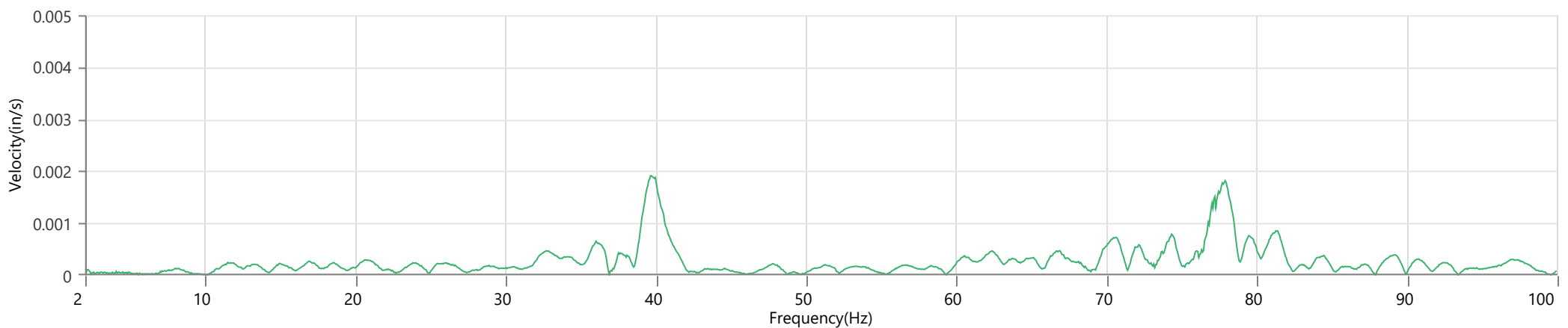
Extended Note N30.49821 W98.21578

Post Event Notes No text to be displayed.

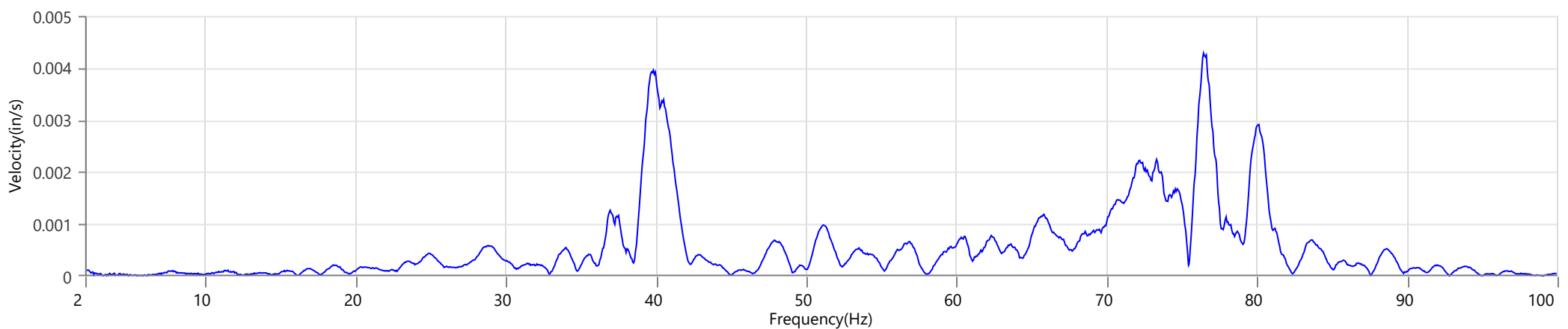
Tran - Dominant Frequency 77.2 Hz, Amplitude 0.0035 in/s (Peak Particle Velocity: 0.2054 in/s)



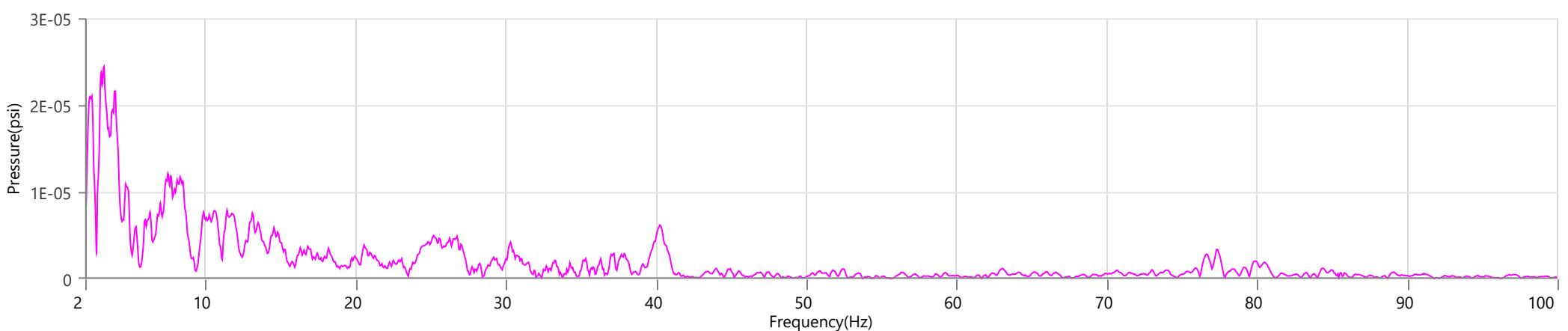
Vert - Dominant Frequency 39.7 Hz, Amplitude 0.0019 in/s (Peak Particle Velocity: 0.0984 in/s)



Long - Dominant Frequency 76.4 Hz, Amplitude 0.0043 in/s (Peak Particle Velocity: 0.2240 in/s)



Mic - Dominant Frequency 3.2 Hz, Amplitude 0.00002 psi (Peak Sound Pressure Level: 0.000626 psi)



Waveform Trigger Source
Trigger Level(s)
Trigger Level (Mic)
Pre-Trigger/Record Time
Sample Rate
Setup File Name
Operator

Vert at February 23, 2024 10:08:32
 Geo 0.0200 in/s
 Mic 0.01029 psi, 131 dB(L)
 0.50 sec/8.0 sec (Fixed)
 4096 sps
 Spicewood Hwy 71 - Station 5.mmb
 Operator

Serial Number
Model Number
Battery Level
Unit Calibration
Event File Name
USB Sensor Support

UM7409
 Micromate ISEE 10.90GC
 3.8 volts
 June 27, 2023 by Instantel
 UM7409_20240223100832.IDFW
 Disabled

Notes

Location Station 5
 Client Spicewood Crushed Stone
 Company Hwy 71 Quarry
 General Notes IGS, Inc.

Extended Note N30.49911 W98.21538

Post Event Notes No text to be displayed.

Geophone

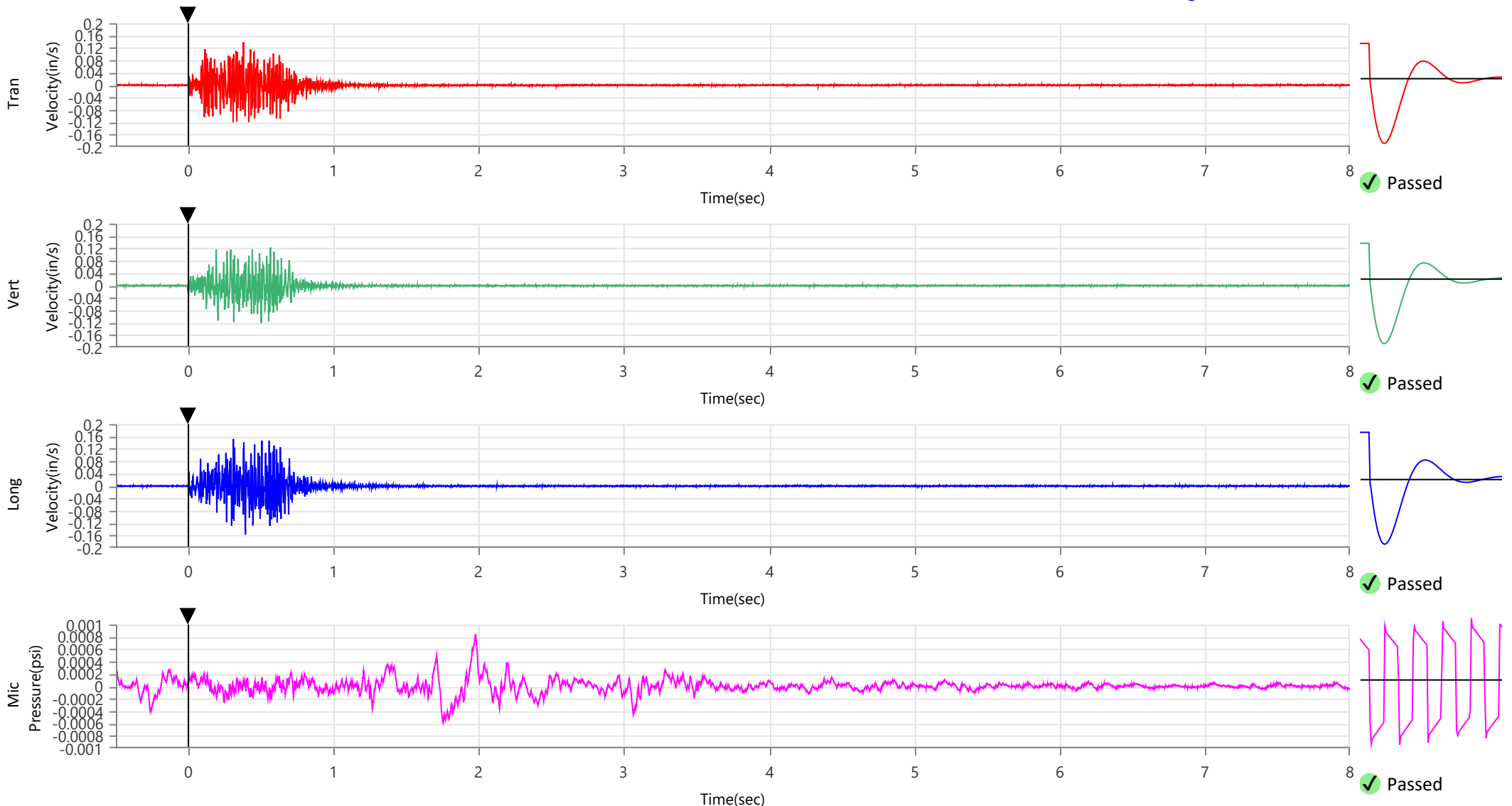
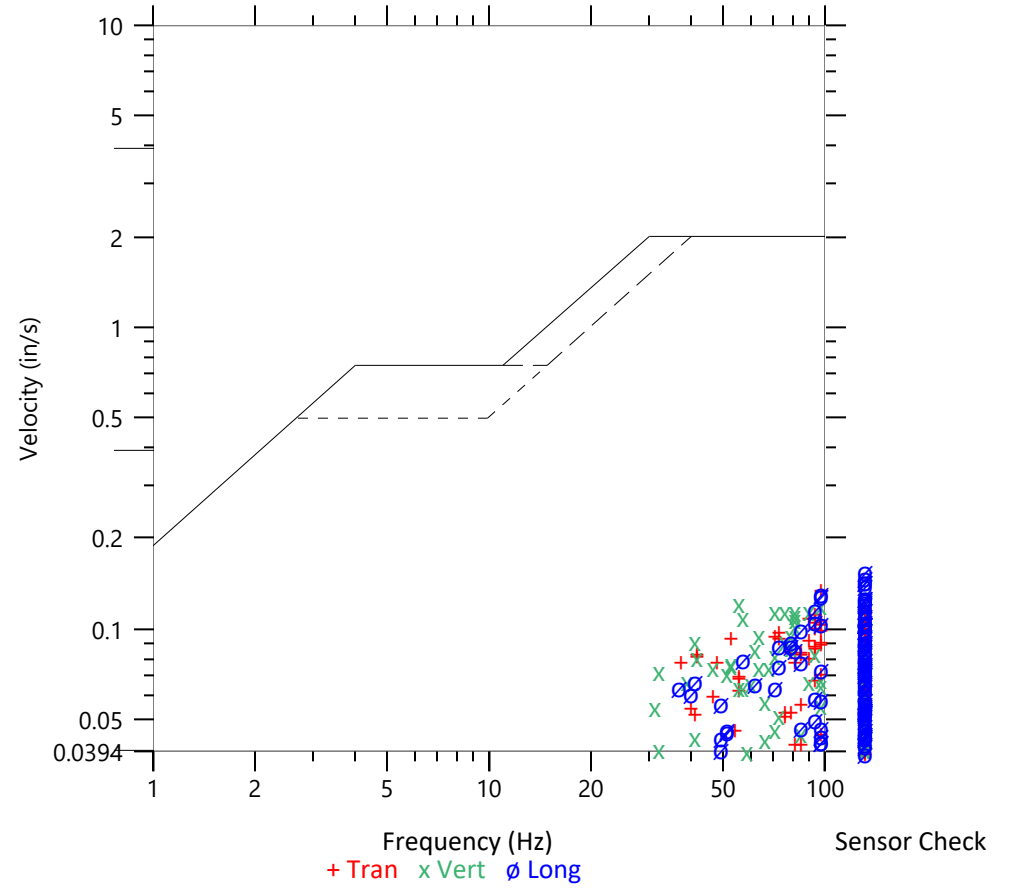
	Tran	Vert	Long
Peak Particle Velocity	0.1384 in/s	0.1229 in/s	0.1573 in/s
Zero Crossing Frequency	>100 Hz	55.4 Hz	>100 Hz
Time (Relative to Trigger)	0.379 sec	0.564 sec	0.393 sec
Peak Acceleration	0.220 g	0.237 g	0.276 g
Peak Displacement	0.000 in	0.000 in	0.000 in
Sensor Check	✓ Passed	✓ Passed	✓ Passed
Frequency	7.5 Hz	7.3 Hz	7.3 Hz
Overswing Ratio	3.6	3.9	3.3

Peak Vector Sum 0.2041 in/s at 0.309 sec

ISEE Linear Microphone

Peak Sound Pressure Level 0.000846 psi
 Peak Sound Pressure Level 109.3 dB(L)
 Time (Relative to Trigger) 1.979 sec
 Zero Crossing Frequency 2.8 Hz
 Sensor Check ✓ Passed
 Frequency 19.7 Hz
 Test Amplitude 1469 mv

USBM R18507 And OSMRE
 Velocity versus Frequency (Zero Crossing)



Waveform Trigger Source
Trigger Level(s)
Trigger Level (Mic)
Pre-Trigger/Record Time
Sample Rate
Setup File Name
Operator

Vert at February 23, 2024 10:08:32
 Geo 0.0200 in/s
 Mic 0.01029 psi, 131 dB(L)
 0.50 sec/8.0 sec (Fixed)
 4096 sps
 Spicewood Hwy 71 - Station 5.mmb
 Operator

Serial Number
Model Number
Battery Level
Unit Calibration
Event File Name
USB Sensor Support

UM7409
 Micromate ISEE 10.90GC
 3.8 volts
 June 27, 2023 by Instantel
 UM7409_20240223100832.IDFW
 Disabled

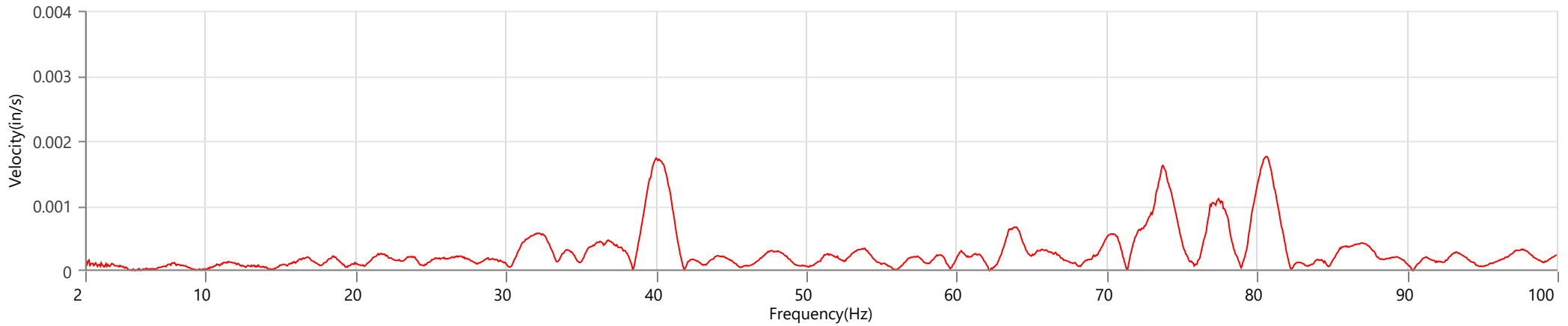
Notes

Location Station 5
 Client Spicewood Crushed Stone
 Company Hwy 71 Quarry
 General Notes IGS, Inc.

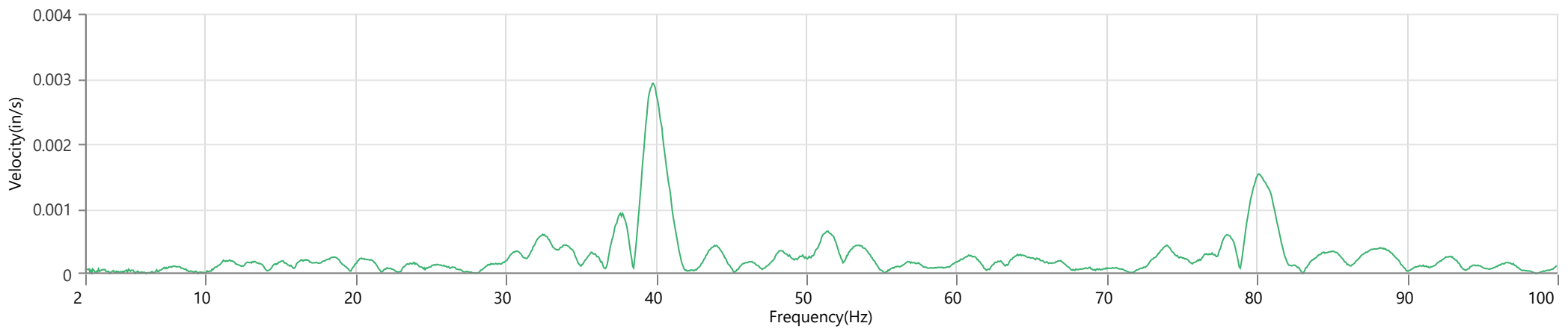
Extended Note N30.49911 W98.21538

Post Event Notes No text to be displayed.

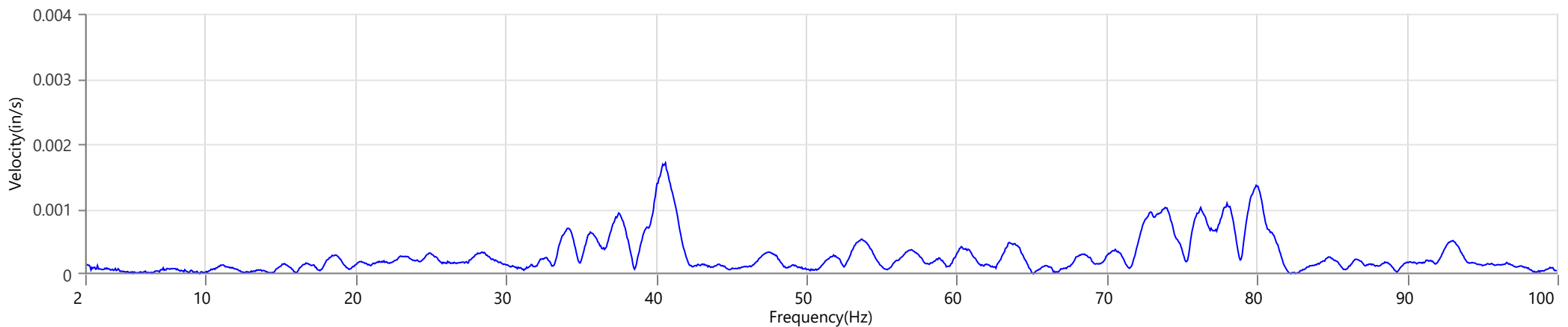
Tran - Dominant Frequency 80.6 Hz, Amplitude 0.0018 in/s (Peak Particle Velocity: 0.1384 in/s)



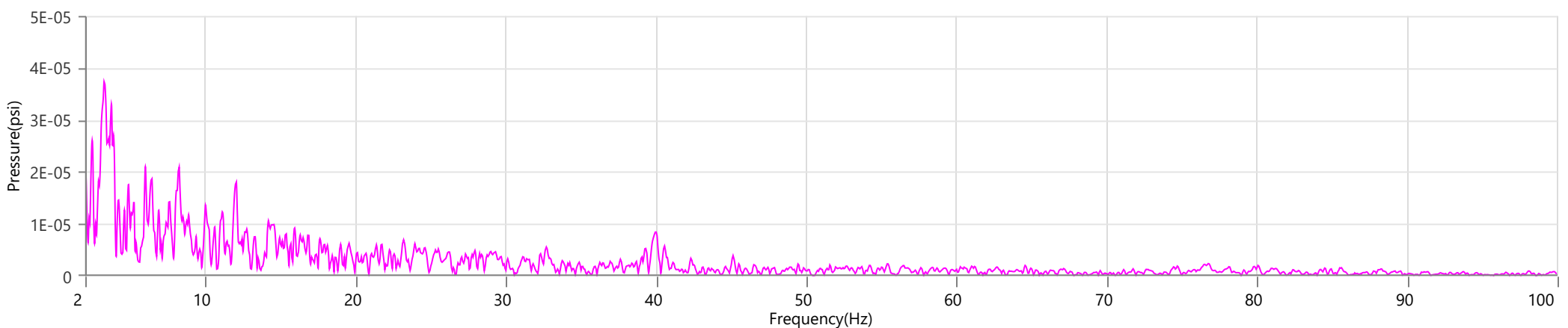
Vert - Dominant Frequency 39.8 Hz, Amplitude 0.0029 in/s (Peak Particle Velocity: 0.1229 in/s)



Long - Dominant Frequency 40.6 Hz, Amplitude 0.0017 in/s (Peak Particle Velocity: 0.1573 in/s)



Mic - Dominant Frequency 3.2 Hz, Amplitude 0.00004 psi (Peak Sound Pressure Level: 0.000846 psi)



Waveform Trigger Source
Trigger Level(s)
Trigger Level (Mic)
Pre-Trigger/Record Time
Sample Rate
Setup File Name
Operator

Vert at February 23, 2024 10:08:33
 Geo 0.0200 in/s
 Mic 0.01029 psi, 131 dB(L)
 0.50 sec/8.0 sec (Fixed)
 4096 sps
 Spicewood Hwy 71 - Station 6.mmb
 Operator

Serial Number
Model Number
Battery Level
Unit Calibration
Event File Name
USB Sensor Support

UM7284
 Micromate ISEE 10.90GC
 3.8 volts
 June 26, 2023 by Instantel
 UM7284_20240223100833.IDFW
 Disabled

Notes

Location Station 6
 Client Spicewood Crushed Stone
 Company Hwy 71 Quarry
 General Notes IGS, Inc.

Extended Note N30.495113 W98.206539

Post Event Notes No text to be displayed.

Geophone

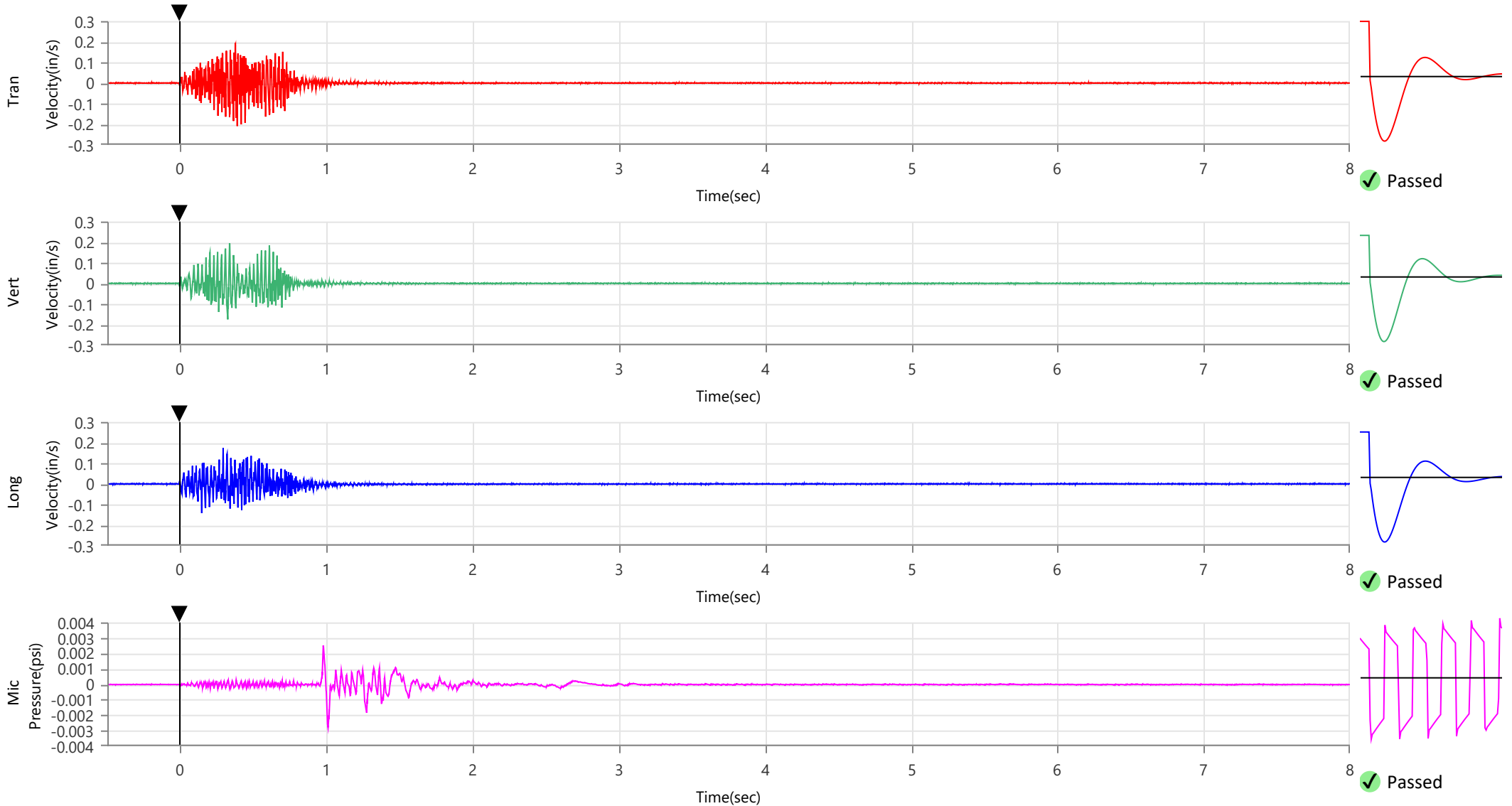
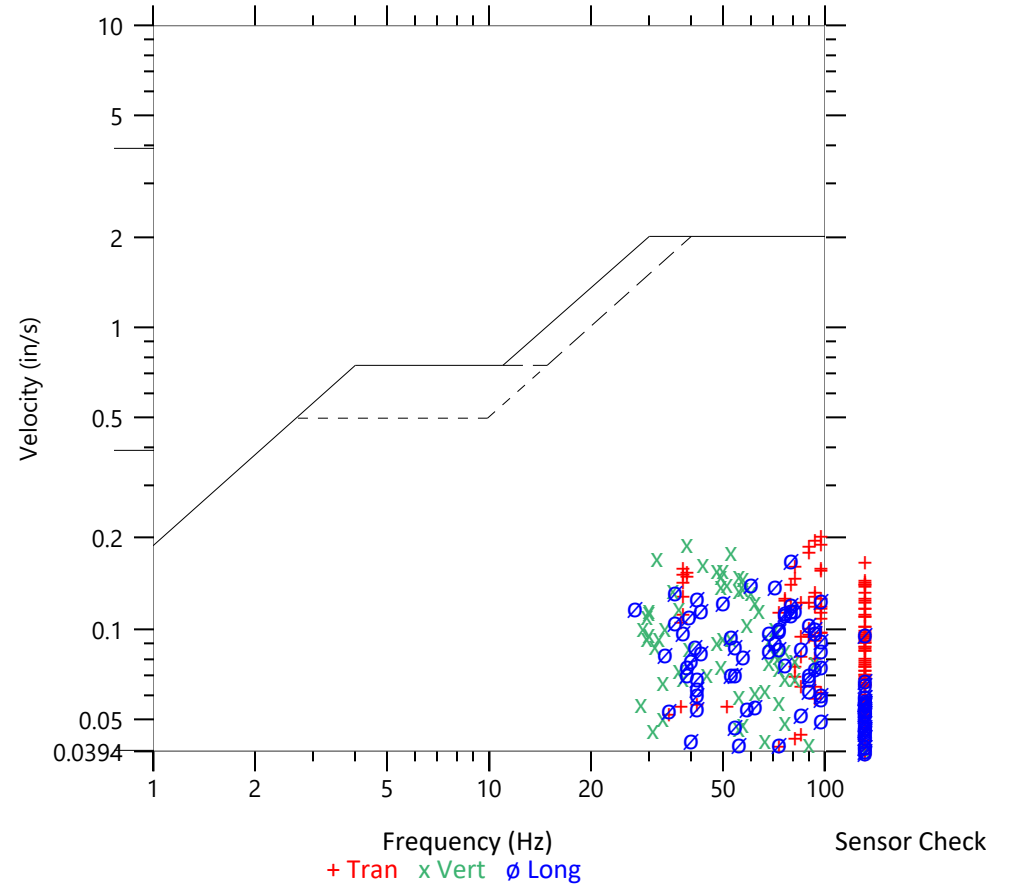
	Tran	Vert	Long
Peak Particle Velocity	0.2091 in/s	0.1943 in/s	0.1741 in/s
Zero Crossing Frequency	97.5 Hz	38.6 Hz	78.8 Hz
Time (Relative to Trigger)	0.390 sec	0.337 sec	0.292 sec
Peak Acceleration	0.326 g	0.174 g	0.220 g
Peak Displacement	0.001 in	0.001 in	0.000 in
Sensor Check	✓ Passed	✓ Passed	✓ Passed
Frequency	7.3 Hz	7.5 Hz	7.1 Hz
Overswing Ratio	3.3	3.5	3.9

Peak Vector Sum 0.2559 in/s at 0.337 sec

ISEE Linear Microphone

Peak Sound Pressure Level 0.002797 psi
 Peak Sound Pressure Level 119.7 dB(L)
 Time (Relative to Trigger) 1.010 sec
 Zero Crossing Frequency 8.2 Hz
 Sensor Check ✓ Passed
 Frequency 20.5 Hz
 Test Amplitude 1458 mv

USBM R18507 And OSMRE
 Velocity versus Frequency (Zero Crossing)



Waveform Trigger Source
Trigger Level(s)
Trigger Level (Mic)
Pre-Trigger/Record Time
Sample Rate
Setup File Name
Operator

Vert at February 23, 2024 10:08:33
 Geo 0.0200 in/s
 Mic 0.01029 psi, 131 dB(L)
 0.50 sec/8.0 sec (Fixed)
 4096 sps
 Spicewood Hwy 71 - Station 6.mmb
 Operator

Serial Number
Model Number
Battery Level
Unit Calibration
Event File Name
USB Sensor Support

UM7284
 Micromate ISEE 10.90GC
 3.8 volts
 June 26, 2023 by Instantel
 UM7284_20240223100833.IDFW
 Disabled

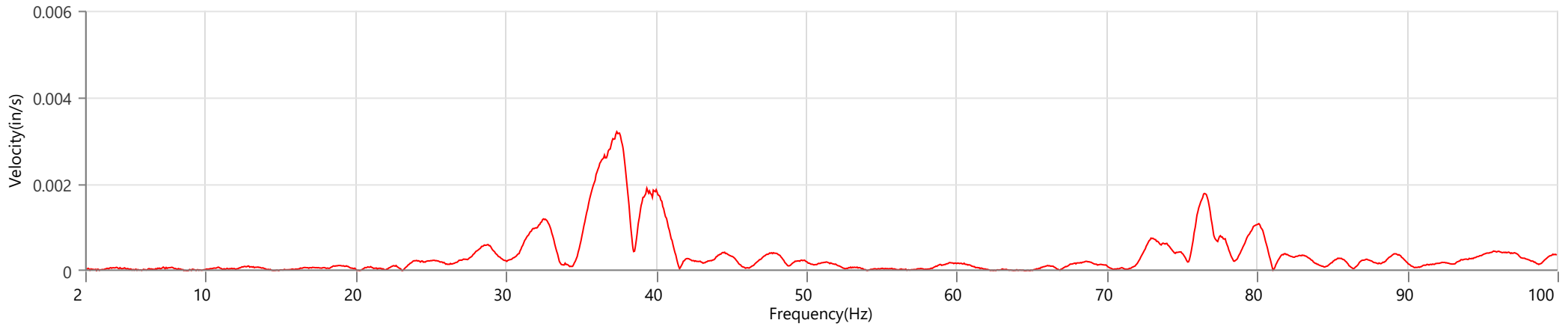
Notes

Location Station 6
 Client Spicewood Crushed Stone
 Company Hwy 71 Quarry
 General Notes IGS, Inc.

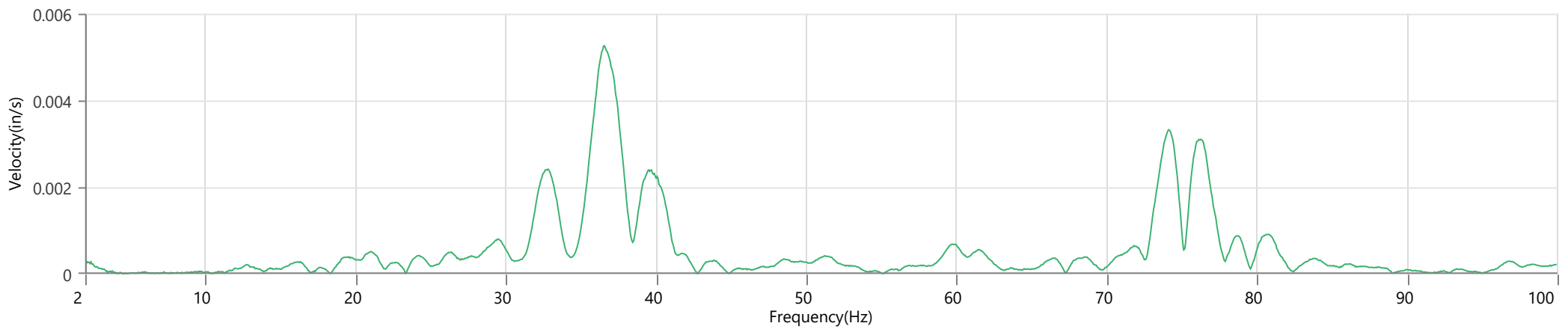
Extended Note N30.495113 W98.206539

Post Event Notes No text to be displayed.

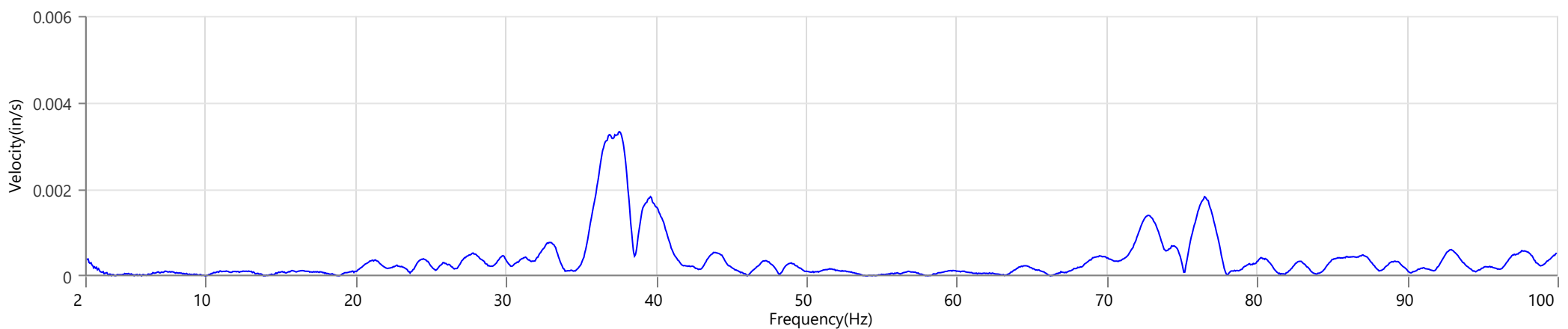
Tran - Dominant Frequency 37.4 Hz, Amplitude 0.0032 in/s (Peak Particle Velocity: 0.2091 in/s)



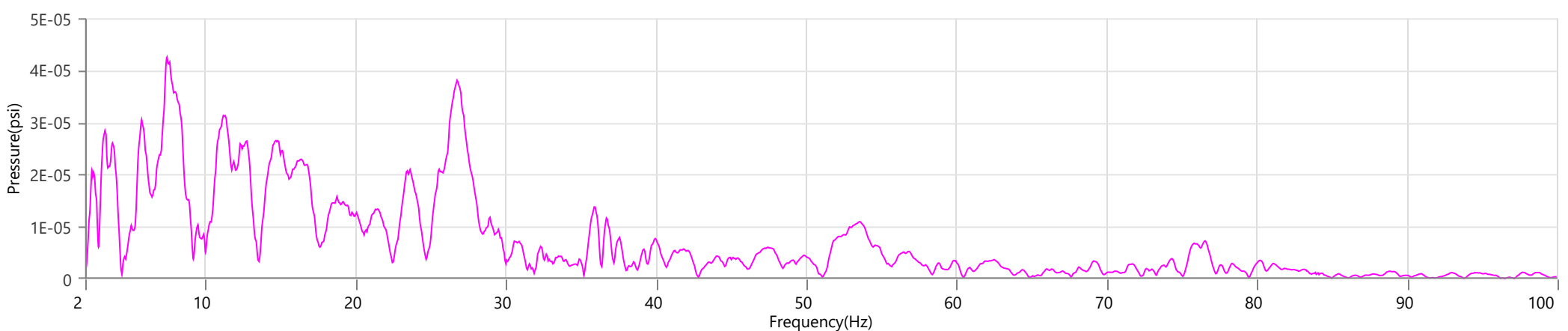
Vert - Dominant Frequency 36.6 Hz, Amplitude 0.0053 in/s (Peak Particle Velocity: 0.1943 in/s)



Long - Dominant Frequency 37.6 Hz, Amplitude 0.0033 in/s (Peak Particle Velocity: 0.1741 in/s)



Mic - Dominant Frequency 7.4 Hz, Amplitude 0.00004 psi (Peak Sound Pressure Level: 0.002797 psi)



Start February 23, 2024 00:00:05
Finish February 23, 2024 23:29:59
Number of Intervals/Interval 1409.91/60 sec
Sample Rate 4096 sps
Setup File Name Spicewood Hwy 71 - Noise 2.mmb
Operator Operator

Serial Number UM11630
Model Number Micromate ISEE 10.90GC
Battery Level 3.8 volts
Unit Calibration June 19, 2023 by Instantel
Microphone Calibration UA10154, March 2, 2023 by Instantel
Event File Name UM11630_20240223000005.IDFH
USB Sensor Support Disabled

Notes
Location Noise 2
Client Spicewood Crushed Stone
Company Hwy 71 Quarry
General Notes IGS, Inc.

Extended Note Station 5N30.49911 W98.21538

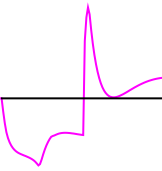
Post Event Notes No text to be displayed.

Sound Level Microphone

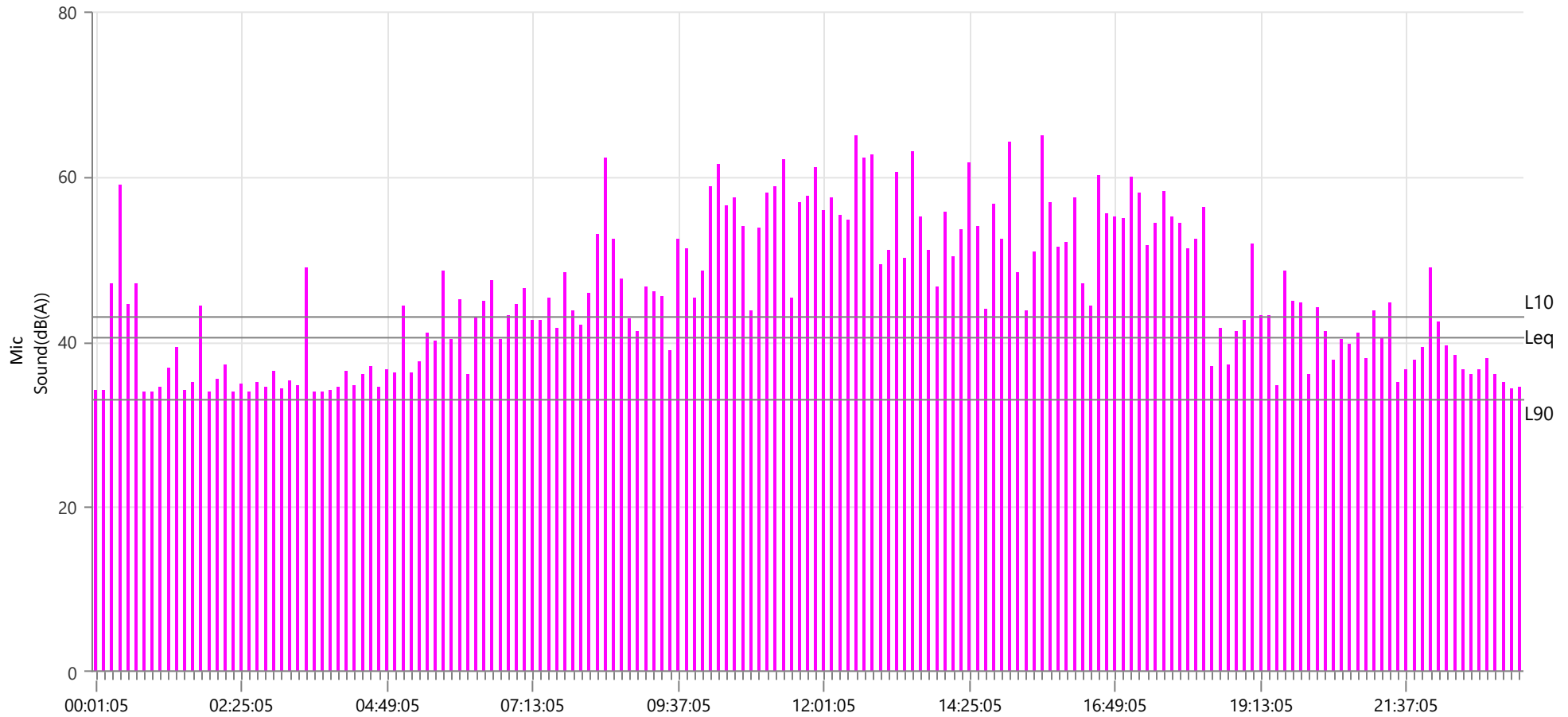
LMax 65.0 dB(A)
Date Feb 23, 2024
Time 15:43:05

	LMin	L10	L90	Leq
Sound(dB(A))	31.2	43	33	40.5
Sensor Check	✓ Passed			
Test Amplitude	1110 mv			

Sensor Check



✓ Passed



Start February 23, 2024 00:00:05
Finish February 23, 2024 23:29:59
Number of Intervals/Interval 1409.91/60 sec
Sample Rate 4096 sps
Setup File Name Spicewood Hwy 71 - Noise 3.mmb
Operator Operator

Serial Number UM11574
Model Number Micromate ISEE 10.90GC
Battery Level 3.8 volts
Unit Calibration June 28, 2023 by Instantel
Microphone Calibration UA10761, July 29, 2022 by Instantel
Event File Name UM11574_20240223000005.IDFH
USB Sensor Support Disabled

Notes
Location Noise 3
Client Spicewood Crushed Stone
Company Hwy 71 Quarry
General Notes IGS, Inc.

Extended Note N30.490958 W98.213495

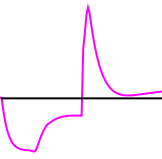
Post Event Notes No text to be displayed.

Sound Level Microphone

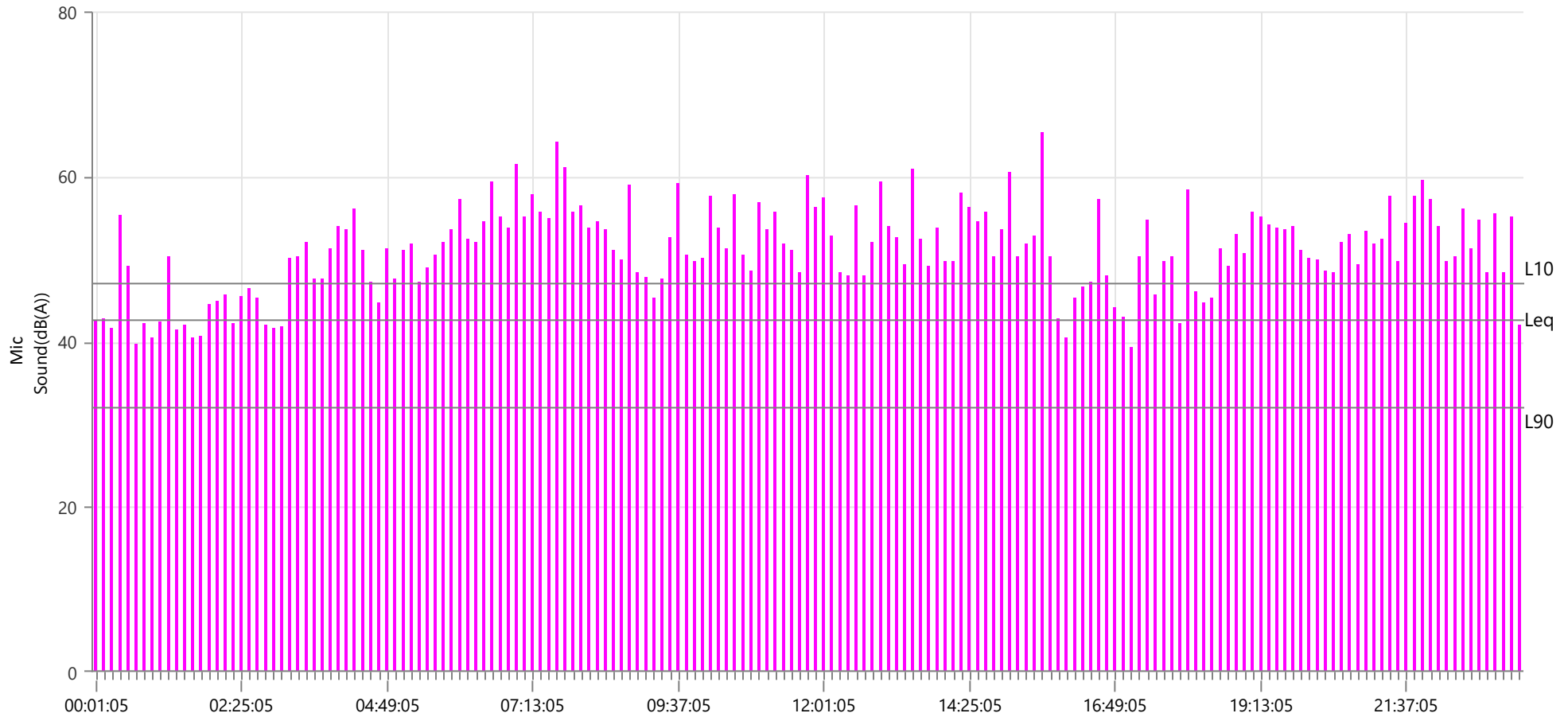
LMax 65.3 dB(A)
Date Feb 23, 2024
Time 15:43:05

	LMin	L10	L90	Leq
Sound(dB(A))	30.4	47	32	42.5
Sensor Check	✓ Passed			
Test Amplitude	1115 mv			

Sensor Check



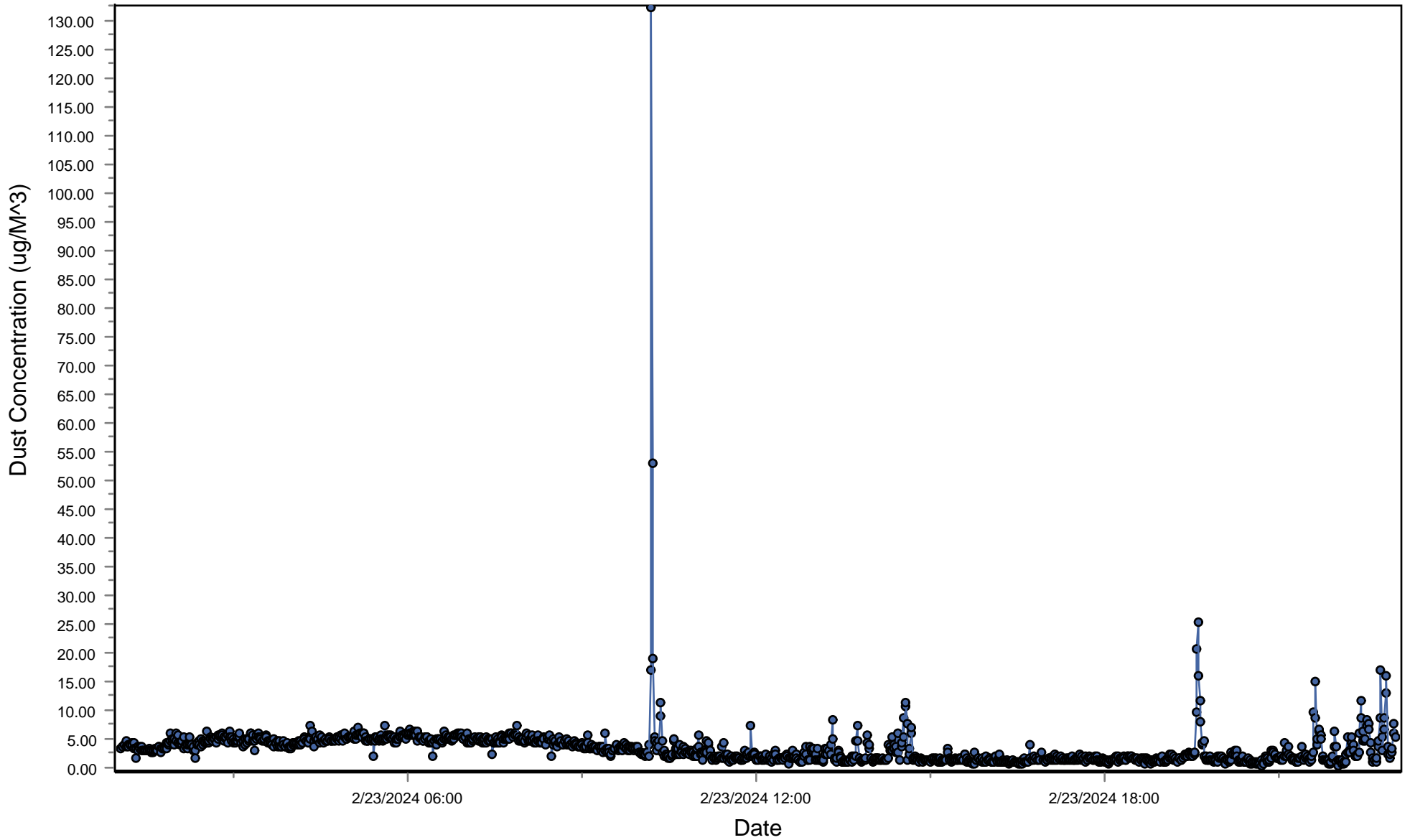
✓ Passed



Spicewood Crushed Stone - Hwy 71 Quarry

South Dust Monitor

● D100@AvgPartL



Spicewood Crushed Stone - Hwy 71 Quarry

North Dust Monitor

● D100@AvgPartL

