

**Waveform Trigger Source**  
**Trigger Level(s)**  
**Trigger Level (Mic)**  
**Pre-Trigger/Record Time**  
**Sample Rate**  
**Setup File Name**  
**Operator**

Long at March 12, 2024 10:15:59  
 Geo 0.0200 in/s  
 Mic 0.01029 psi, 131 dB(L)  
 0.50 sec/8.0 sec (Fixed)  
 4096 sps  
 Spicewood Hwy 71 - Station 2.mmb  
 Operator

**Serial Number**  
**Model Number**  
**Battery Level**  
**Unit Calibration**  
**Event File Name**  
**USB Sensor Support**

UM7306  
 Micromate ISEE 10.90GC  
 3.8 volts  
 August 18, 2023 by InstanTel  
 UM7306\_20240312101559.IDFW  
 Disabled

**Notes**

Location Station 2  
 Client Spicewood Crushed Stone  
 Company Hwy 71  
 General Notes IGS, Inc

**Extended Note** N30.49650 W21572

**Post Event Notes** No text to be displayed.

**Geophone**

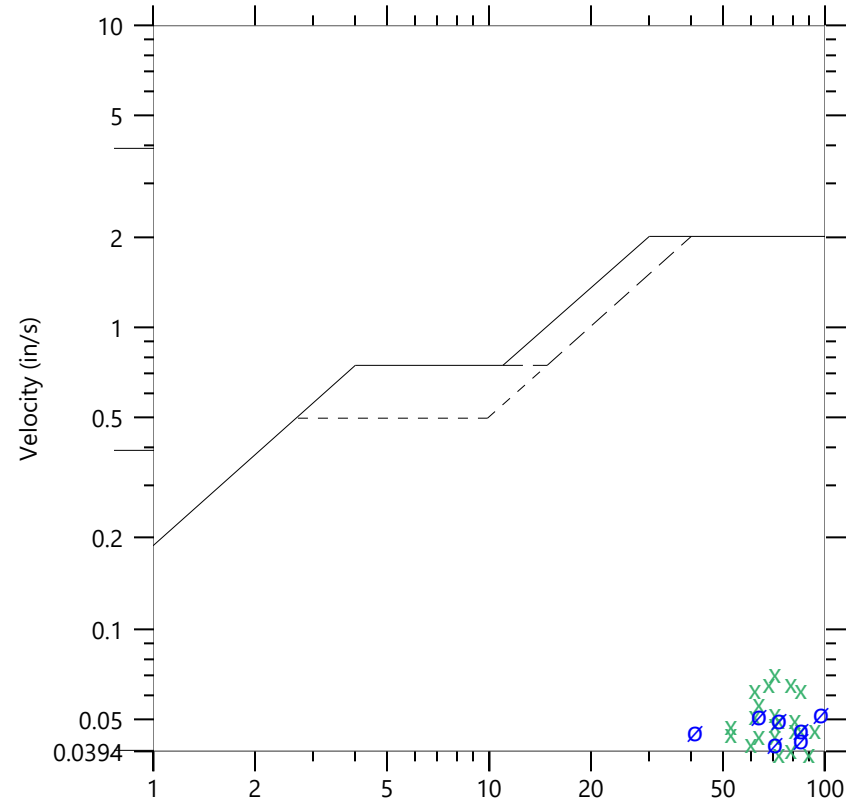
	Tran	Vert	Long
Peak Particle Velocity	0.0382 in/s	0.0726 in/s	0.0618 in/s
Zero Crossing Frequency	>100 Hz	70.6 Hz	>100 Hz
Time (Relative to Trigger)	0.260 sec	0.126 sec	0.085 sec
Peak Acceleration	0.072 g	0.102 g	0.115 g
Peak Displacement	0.000 in	0.000 in	0.000 in
Sensor Check	✓ Passed	✓ Passed	✓ Passed
Frequency	7.1 Hz	7.5 Hz	7.7 Hz
Overswing Ratio	3.5	3.1	3.1

Peak Vector Sum 0.0766 in/s at 0.146 sec

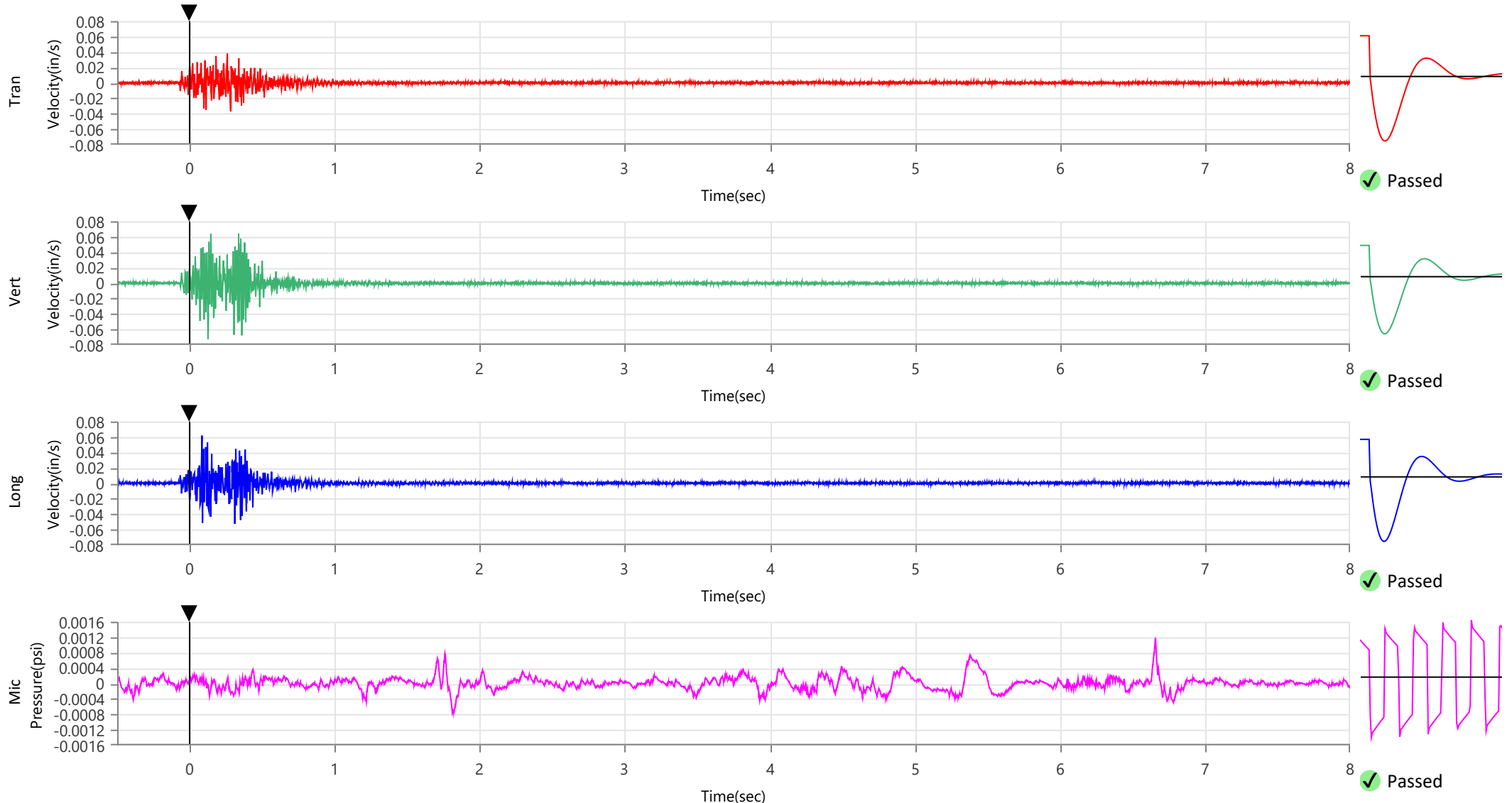
**ISEE Linear Microphone**

Peak Sound Pressure Level 0.001190 psi  
 Peak Sound Pressure Level 112.3 dB(L)  
 Time (Relative to Trigger) 6.658 sec  
 Zero Crossing Frequency 6.6 Hz  
 Sensor Check ✓ Passed  
 Frequency 19.7 Hz  
 Test Amplitude 1382 mv

**USBM R18507 And OSMRE**  
 Velocity versus Frequency (Zero Crossing)



Frequency (Hz)  
 + Tran x Vert o Long  
 Sensor Check



**Waveform Trigger Source**  
**Trigger Level(s)**  
**Trigger Level (Mic)**  
**Pre-Trigger/Record Time**  
**Sample Rate**  
**Setup File Name**  
**Operator**

Long at March 12, 2024 10:15:59  
 Geo 0.0200 in/s  
 Mic 0.01029 psi, 131 dB(L)  
 0.50 sec/8.0 sec (Fixed)  
 4096 sps  
 Spicewood Hwy 71 - Station 2.mmb  
 Operator

**Serial Number**  
**Model Number**  
**Battery Level**  
**Unit Calibration**  
**Event File Name**  
**USB Sensor Support**

UM7306  
 Micromate ISEE 10.90GC  
 3.8 volts  
 August 18, 2023 by Instantel  
 UM7306\_20240312101559.IDFW  
 Disabled

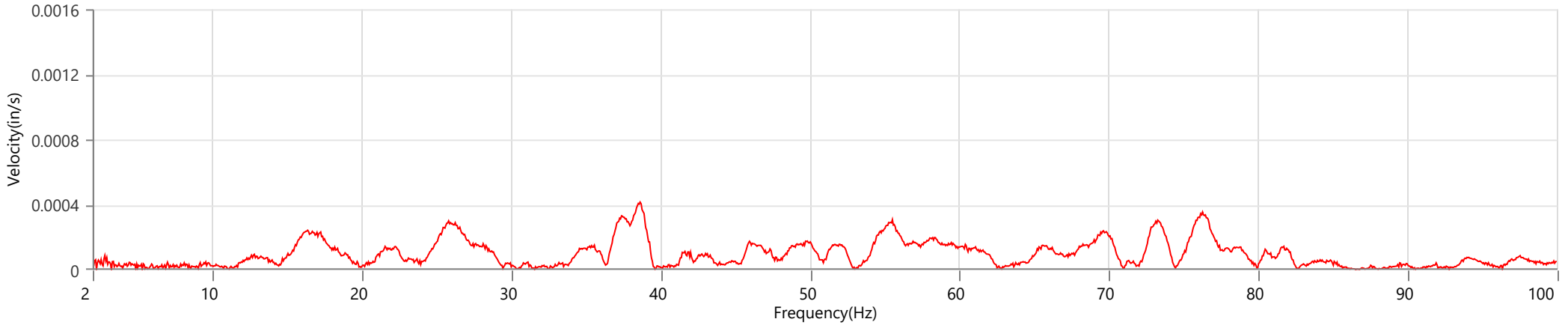
**Notes**

Location Station 2  
 Client Spicewood Crushed Stone  
 Company Hwy 71  
 General Notes IGS, Inc

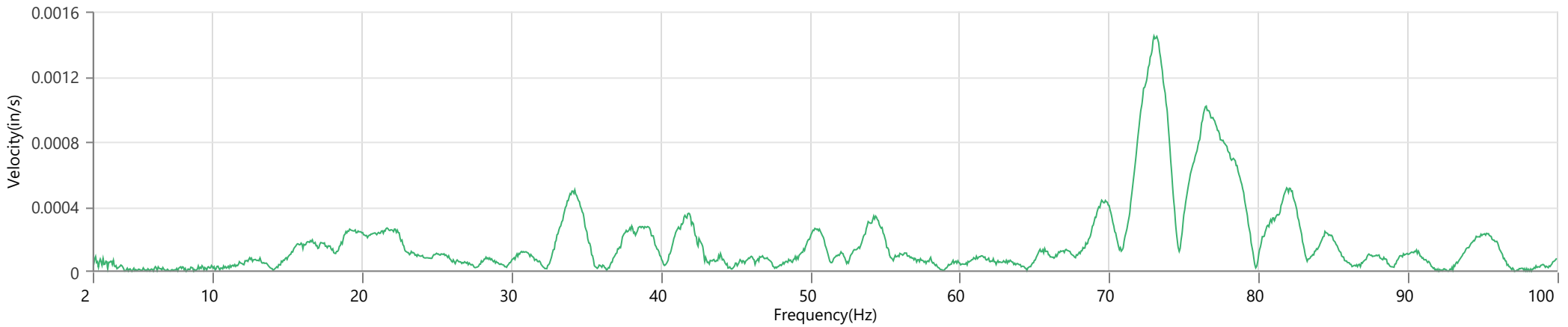
**Extended Note** N30.49650 W21572

**Post Event Notes** No text to be displayed.

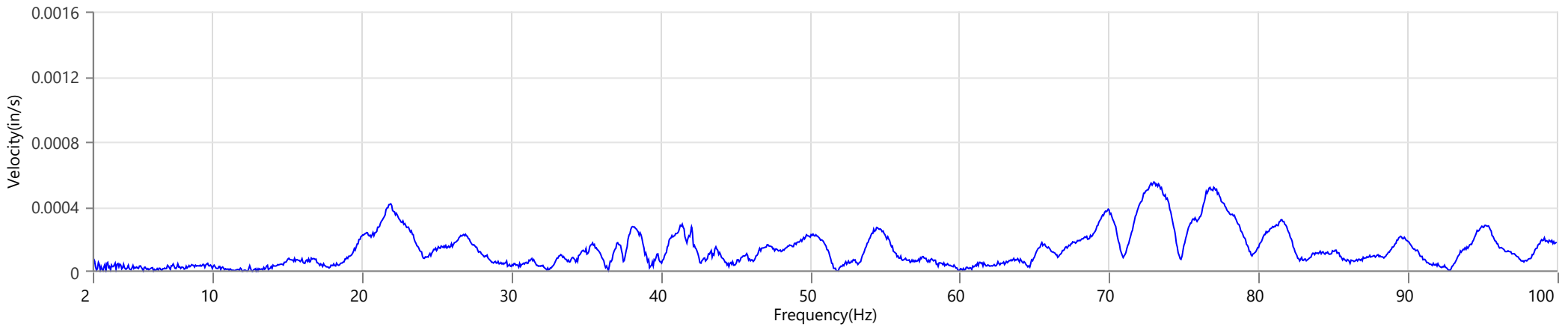
**Tran - Dominant Frequency 38.6 Hz, Amplitude 0.0004 in/s (Peak Particle Velocity: 0.0382 in/s)**



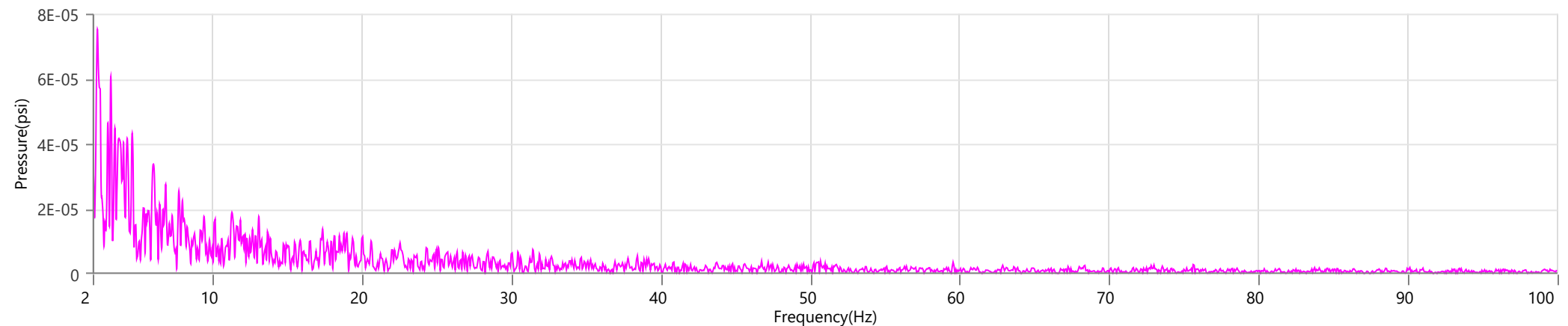
**Vert - Dominant Frequency 73.0 Hz, Amplitude 0.0014 in/s (Peak Particle Velocity: 0.0726 in/s)**



**Long - Dominant Frequency 73.0 Hz, Amplitude 0.0006 in/s (Peak Particle Velocity: 0.0618 in/s)**



**Mic - Dominant Frequency 2.3 Hz, Amplitude 0.00008 psi (Peak Sound Pressure Level: 0.001190 psi)**



**Waveform Trigger Source**  
**Trigger Level(s)**  
**Trigger Level (Mic)**  
**Pre-Trigger/Record Time**  
**Sample Rate**  
**Setup File Name**  
**Operator**

Vert at March 12, 2024 10:15:58  
 Geo 0.0200 in/s  
 Mic 0.01029 psi, 131 dB(L)  
 0.50 sec/8.0 sec (Fixed)  
 4096 sps  
 Spicewood Hwy 71 - Station 3.mmb  
 Operator

**Serial Number**  
**Model Number**  
**Battery Level**  
**Unit Calibration**  
**Event File Name**  
**USB Sensor Support**

UM20082  
 Micromate ISEE 10.90GC  
 3.8 volts  
 May 19, 2023 by Instantel  
 UM20082\_20240312101558.IDFW  
 Disabled

**Notes**

Location Station 3  
 Client Spicewood Crushed Stone  
 Company Hwy 71 Quarry  
 General Notes IGS, Inc.

**Extended Note** N30.49742 W98.21566

**Post Event Notes** No text to be displayed.

**Geophone**

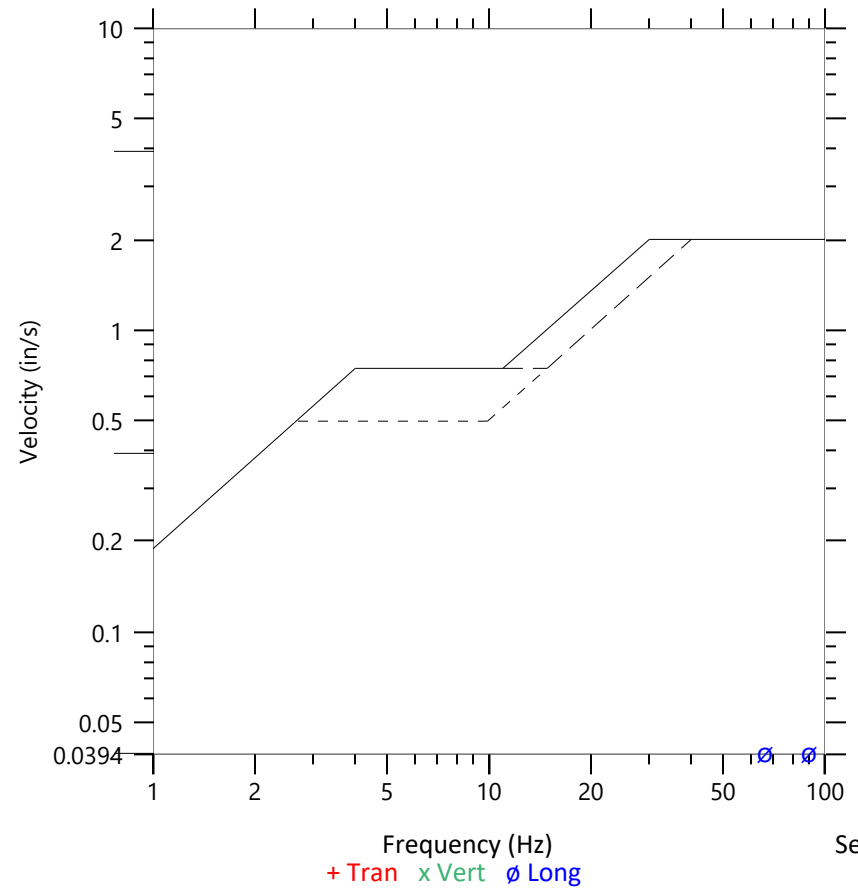
	Tran	Vert	Long
Peak Particle Velocity	0.0292 in/s	0.0341 in/s	0.0410 in/s
Zero Crossing Frequency	93.1 Hz	>100 Hz	66.1 Hz
Time (Relative to Trigger)	0.325 sec	0.028 sec	0.354 sec
Peak Acceleration	0.056 g	0.086 g	0.082 g
Peak Displacement	0.000 in	0.000 in	0.000 in
Sensor Check	✓ Passed	✓ Passed	✓ Passed
Frequency	7.3 Hz	7.5 Hz	7.3 Hz
Overswing Ratio	4.4	4.1	4.3

Peak Vector Sum 0.0470 in/s at 0.354 sec

**ISEE Linear Microphone**

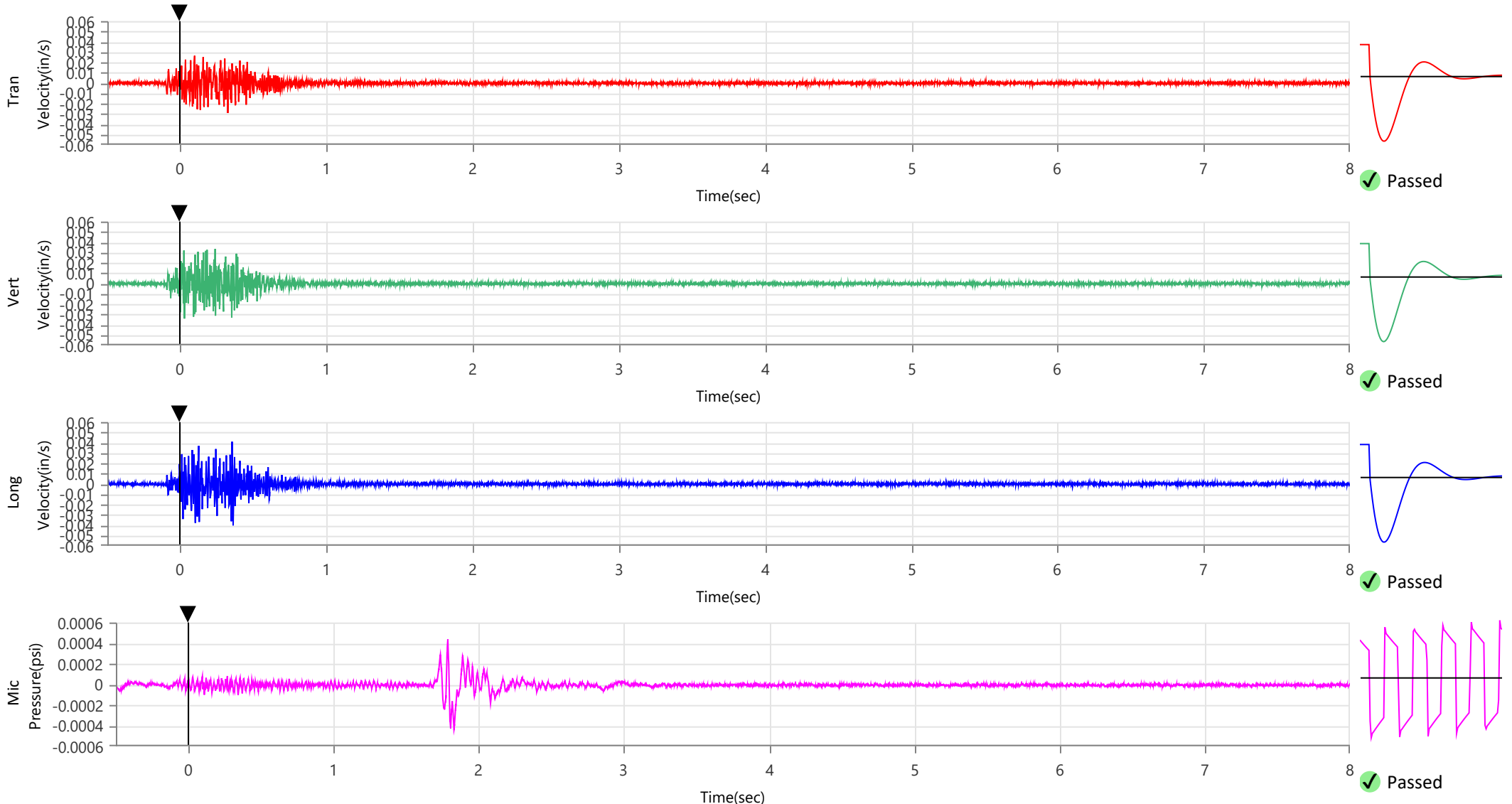
Peak Sound Pressure Level 0.000441 psi  
 Peak Sound Pressure Level 103.6 dB(L)  
 Time (Relative to Trigger) 1.829 sec  
 Zero Crossing Frequency 6.3 Hz  
 Sensor Check ✓ Passed  
 Frequency 20.5 Hz  
 Test Amplitude 1445 mv

**USBM R18507 And OSMRE**  
 Velocity versus Frequency (Zero Crossing)



Sensor Check

Frequency (Hz)  
 + Tran x Vert ø Long



**Waveform Trigger Source**  
**Trigger Level(s)**  
**Trigger Level (Mic)**  
**Pre-Trigger/Record Time**  
**Sample Rate**  
**Setup File Name**  
**Operator**

Vert at March 12, 2024 10:15:58  
 Geo 0.0200 in/s  
 Mic 0.01029 psi, 131 dB(L)  
 0.50 sec/8.0 sec (Fixed)  
 4096 sps  
 Spicewood Hwy 71 - Station 3.mmb  
 Operator

**Serial Number**  
**Model Number**  
**Battery Level**  
**Unit Calibration**  
**Event File Name**  
**USB Sensor Support**

UM20082  
 Micromate ISEE 10.90GC  
 3.8 volts  
 May 19, 2023 by InstanTel  
 UM20082\_20240312101558.IDFW  
 Disabled

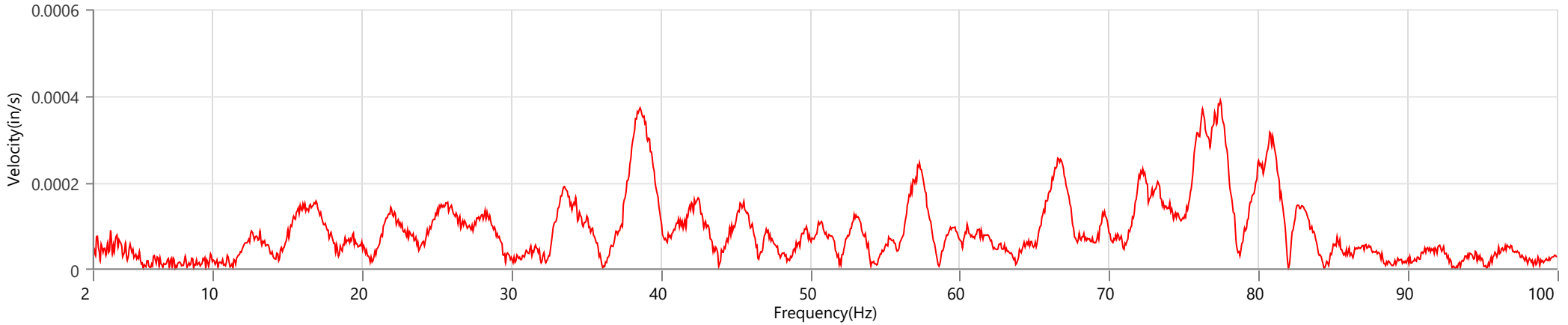
**Notes**

Location Station 3  
 Client Spicewood Crushed Stone  
 Company Hwy 71 Quarry  
 General Notes IGS, Inc.

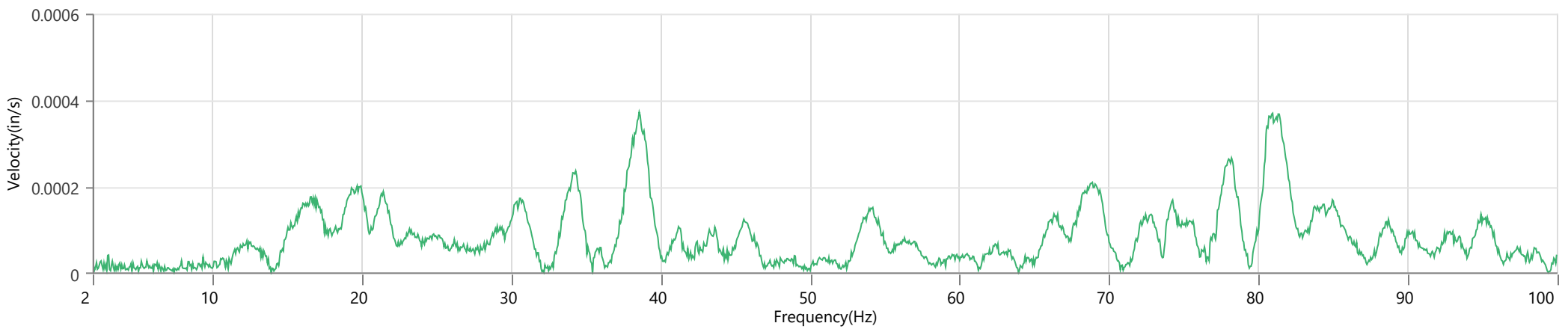
**Extended Note** N30.49742 W98.21566

**Post Event Notes** No text to be displayed.

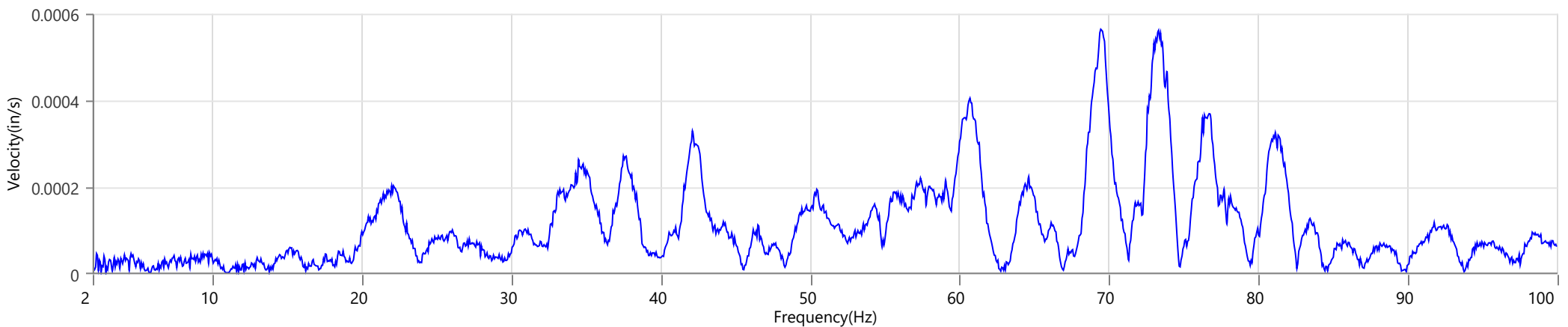
**Tran - Dominant Frequency 77.4 Hz, Amplitude 0.0004 in/s (Peak Particle Velocity: 0.0292 in/s)**



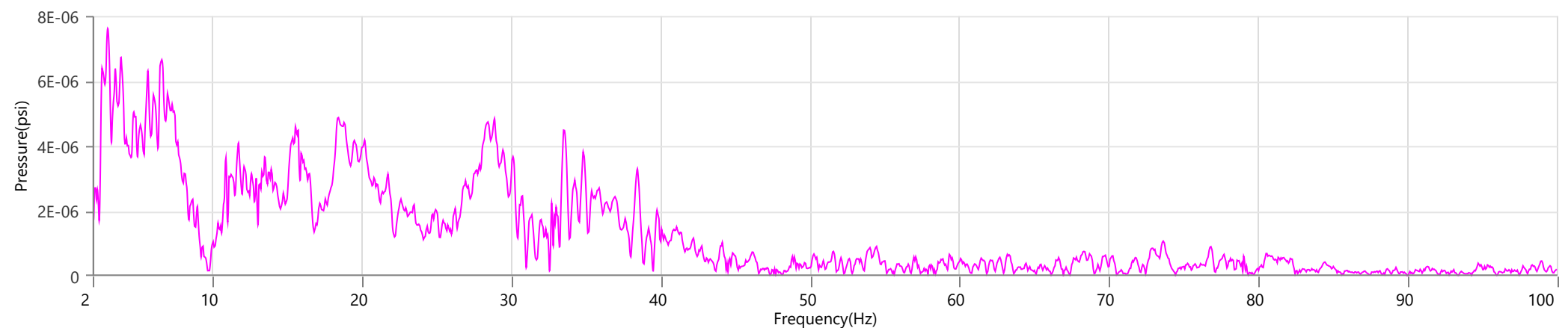
**Vert - Dominant Frequency 38.6 Hz, Amplitude 0.0004 in/s (Peak Particle Velocity: 0.0341 in/s)**



**Long - Dominant Frequency 69.4 Hz, Amplitude 0.0006 in/s (Peak Particle Velocity: 0.0410 in/s)**



**Mic - Dominant Frequency 3.0 Hz, Amplitude 0.00001 psi (Peak Sound Pressure Level: 0.000441 psi)**



**Waveform Trigger Source**  
**Trigger Level(s)**  
**Trigger Level (Mic)**  
**Pre-Trigger/Record Time**  
**Sample Rate**  
**Setup File Name**  
**Operator**

Tran at March 12, 2024 10:15:58  
 Geo 0.0200 in/s  
 Mic 0.01029 psi, 131 dB(L)  
 0.50 sec/8.0 sec (Fixed)  
 4096 sps  
 Spicewood Hwy 71 - Station 4.mmb  
 Operator

**Serial Number**  
**Model Number**  
**Battery Level**  
**Unit Calibration**  
**Event File Name**  
**USB Sensor Support**

UM7490  
 Micromate ISEE 10.90GC  
 3.8 volts  
 February 23, 2023 by InstanTEL  
 UM7490\_20240312101558.IDFW  
 Disabled

**Notes**

Location Station 4  
 Client Spicewood Crushed Stone  
 Company Hwy 71 Quarry  
 General Notes IGS, Inc.

**Extended Note** N30.49821 W98.21578

**Post Event Notes** No text to be displayed.

**Geophone**

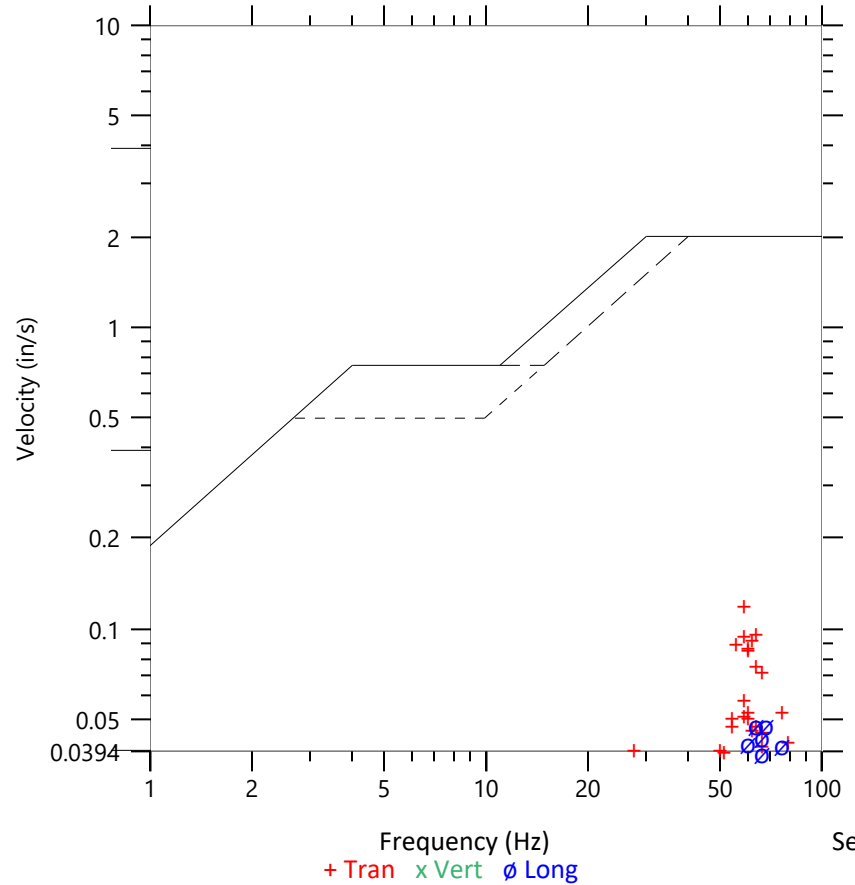
	Tran	Vert	Long
Peak Particle Velocity	0.1210 in/s	0.0335 in/s	0.0490 in/s
Zero Crossing Frequency	58.5 Hz	>100 Hz	68.3 Hz
Time (Relative to Trigger)	0.233 sec	0.314 sec	0.477 sec
Peak Acceleration	0.115 g	0.063 g	0.069 g
Peak Displacement	0.000 in	0.000 in	0.000 in
Sensor Check	✓ Passed	✓ Passed	✓ Passed
Frequency	7.1 Hz	7.3 Hz	7.3 Hz
Overswing Ratio	4.8	3.7	3.6

Peak Vector Sum 0.1241 in/s at 0.233 sec

**ISEE Linear Microphone**

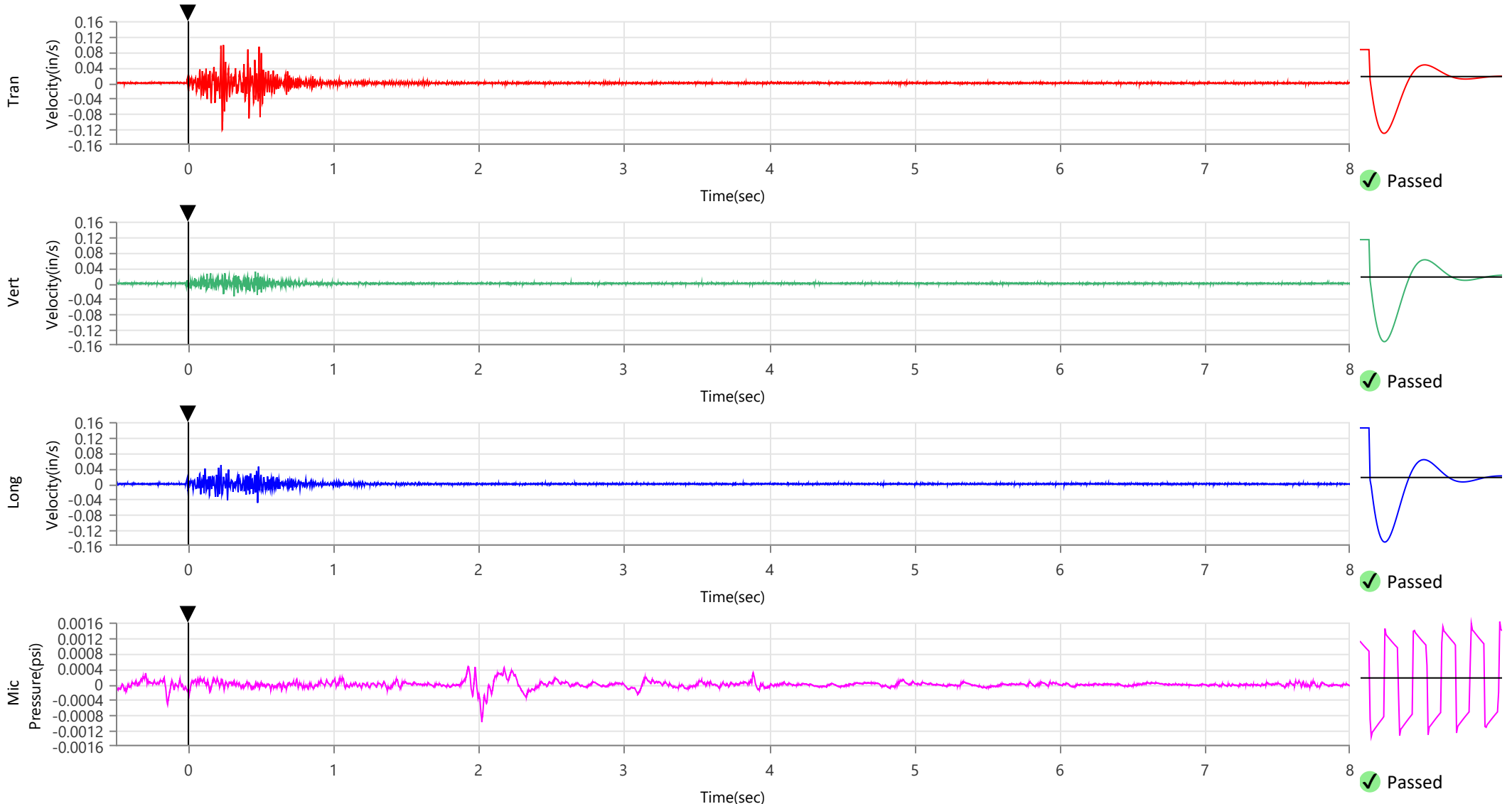
Peak Sound Pressure Level 0.000974 psi  
 Peak Sound Pressure Level 110.5 dB(L)  
 Time (Relative to Trigger) 2.021 sec  
 Zero Crossing Frequency 4.3 Hz  
 Sensor Check ✓ Passed  
 Frequency 20.5 Hz  
 Test Amplitude 1409 mv

**USBM R18507 And OSMRE**  
 Velocity versus Frequency (Zero Crossing)



Sensor Check

+ Tran x Vert o Long



**Waveform Trigger Source**  
**Trigger Level(s)**  
**Trigger Level (Mic)**  
**Pre-Trigger/Record Time**  
**Sample Rate**  
**Setup File Name**  
**Operator**

Tran at March 12, 2024 10:15:58  
 Geo 0.0200 in/s  
 Mic 0.01029 psi, 131 dB(L)  
 0.50 sec/8.0 sec (Fixed)  
 4096 sps  
 Spicewood Hwy 71 - Station 4.mmb  
 Operator

**Serial Number**  
**Model Number**  
**Battery Level**  
**Unit Calibration**  
**Event File Name**  
**USB Sensor Support**

UM7490  
 Micromate ISEE 10.90GC  
 3.8 volts  
 February 23, 2023 by Instantel  
 UM7490\_20240312101558.IDFW  
 Disabled

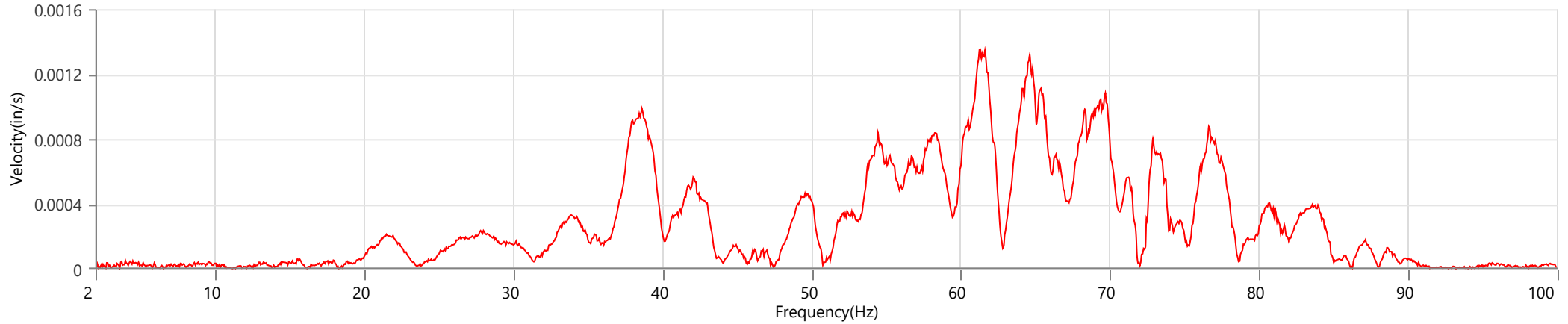
**Notes**

Location Station 4  
 Client Spicewood Crushed Stone  
 Company Hwy 71 Quarry  
 General Notes IGS, Inc.

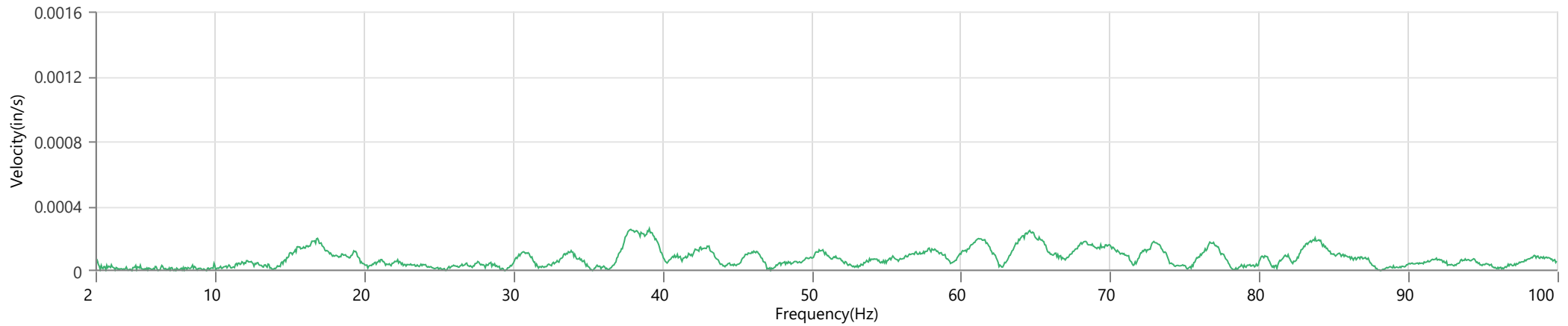
**Extended Note** N30.49821 W98.21578

**Post Event Notes** No text to be displayed.

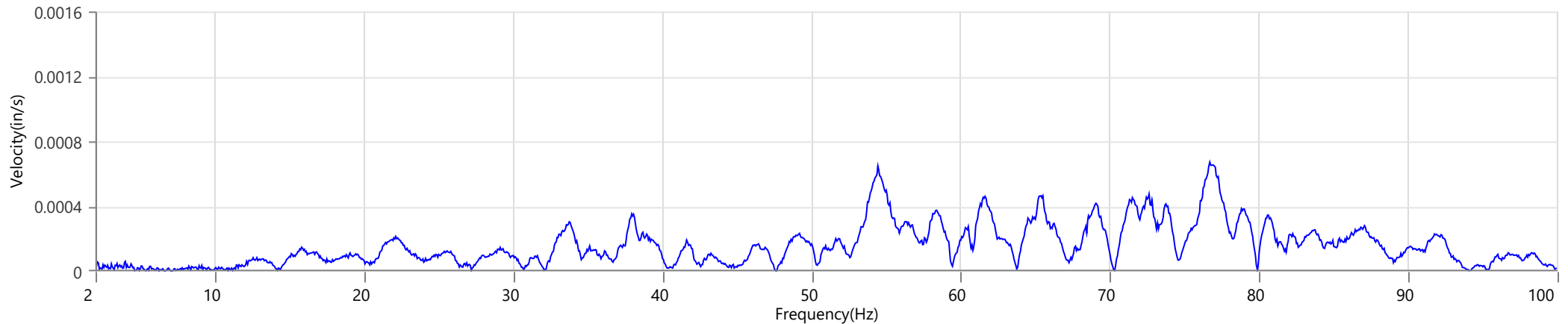
**Tran - Dominant Frequency 61.3 Hz, Amplitude 0.0014 in/s (Peak Particle Velocity: 0.1210 in/s)**



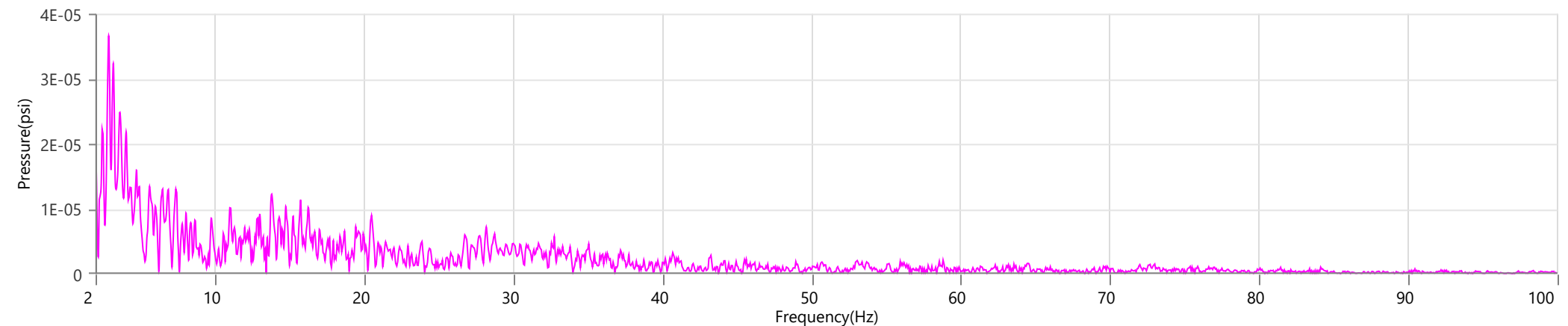
**Vert - Dominant Frequency 39.1 Hz, Amplitude 0.0003 in/s (Peak Particle Velocity: 0.0335 in/s)**



**Long - Dominant Frequency 76.7 Hz, Amplitude 0.0007 in/s (Peak Particle Velocity: 0.0490 in/s)**



**Mic - Dominant Frequency 2.9 Hz, Amplitude 0.00004 psi (Peak Sound Pressure Level: 0.000974 psi)**





**Waveform Trigger Source**  
**Trigger Level(s)**  
**Trigger Level (Mic)**  
**Pre-Trigger/Record Time**  
**Sample Rate**  
**Setup File Name**  
**Operator**

Tran at March 12, 2024 10:15:58  
 Geo 0.0200 in/s  
 Mic 0.01029 psi, 131 dB(L)  
 0.50 sec/8.0 sec (Fixed)  
 4096 sps  
 Spicewood Hwy 71 - Station 5.mmb  
 Operator

**Serial Number**  
**Model Number**  
**Battery Level**  
**Unit Calibration**  
**Event File Name**  
**USB Sensor Support**

UM7409  
 Micromate ISEE 10.90GC  
 3.8 volts  
 June 27, 2023 by Instantel  
 UM7409\_20240312101558.IDFW  
 Disabled

**Notes**

Location Station 5  
 Client Spicewood Crushed Stone  
 Company Hwy 71 Quarry  
 General Notes IGS, Inc.

**Extended Note** N30.49911 W98.21538

**Post Event Notes** No text to be displayed.

**Geophone**

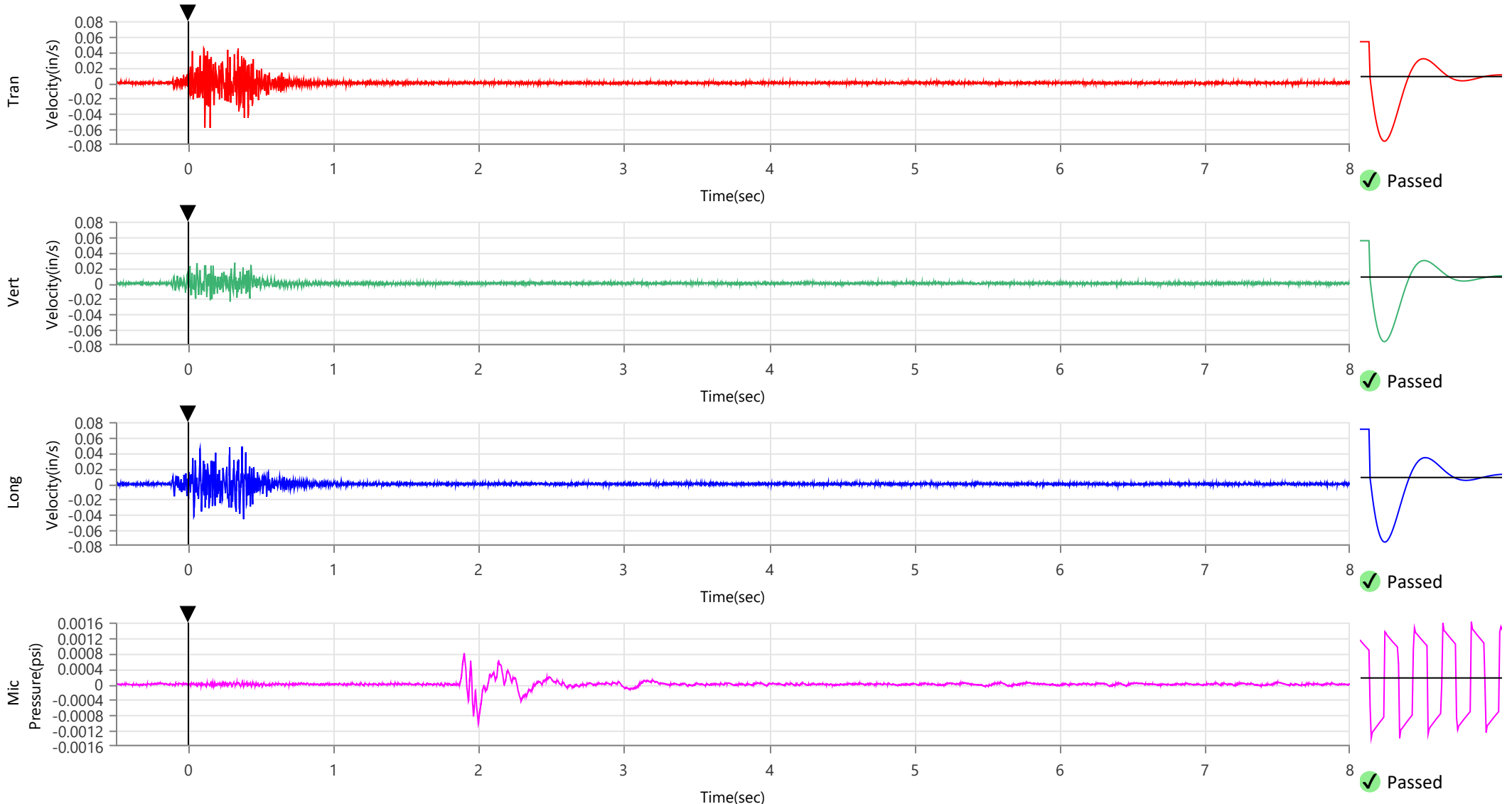
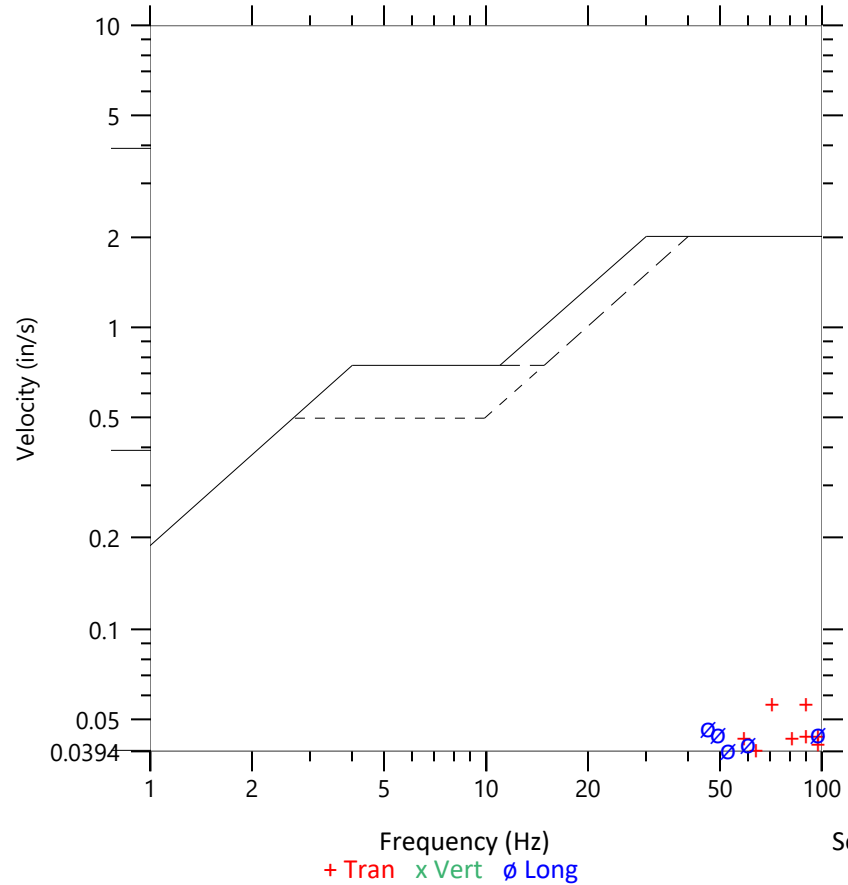
	Tran	Vert	Long
Peak Particle Velocity	0.0580 in/s	0.0267 in/s	0.0484 in/s
Zero Crossing Frequency	93.1 Hz	45.5 Hz	45.5 Hz
Time (Relative to Trigger)	0.150 sec	0.320 sec	0.370 sec
Peak Acceleration	0.082 g	0.056 g	0.079 g
Peak Displacement	0.000 in	0.000 in	0.000 in
Sensor Check	✓ Passed	✓ Passed	✓ Passed
Frequency	7.5 Hz	7.3 Hz	7.3 Hz
Overswing Ratio	3.6	3.9	3.2

Peak Vector Sum 0.0629 in/s at 0.150 sec

**ISEE Linear Microphone**

Peak Sound Pressure Level 0.001013 psi  
 Peak Sound Pressure Level 110.9 dB(L)  
 Time (Relative to Trigger) 1.997 sec  
 Zero Crossing Frequency 4.5 Hz  
 Sensor Check ✓ Passed  
 Frequency 19.7 Hz  
 Test Amplitude 1380 mv

**USBM R18507 And OSMRE**  
 Velocity versus Frequency (Zero Crossing)



**Waveform Trigger Source**  
**Trigger Level(s)**  
**Trigger Level (Mic)**  
**Pre-Trigger/Record Time**  
**Sample Rate**  
**Setup File Name**  
**Operator**

Tran at March 12, 2024 10:15:58  
 Geo 0.0200 in/s  
 Mic 0.01029 psi, 131 dB(L)  
 0.50 sec/8.0 sec (Fixed)  
 4096 sps  
 Spicewood Hwy 71 - Station 5.mmb  
 Operator

**Serial Number**  
**Model Number**  
**Battery Level**  
**Unit Calibration**  
**Event File Name**  
**USB Sensor Support**

UM7409  
 Micromate ISEE 10.90GC  
 3.8 volts  
 June 27, 2023 by InstanTEL  
 UM7409\_20240312101558.IDFW  
 Disabled

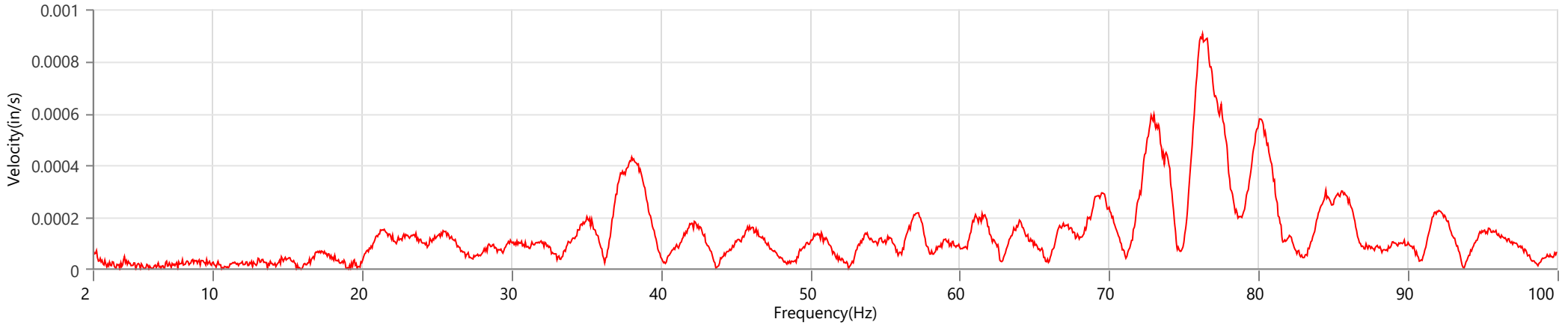
**Notes**

Location Station 5  
 Client Spicewood Crushed Stone  
 Company Hwy 71 Quarry  
 General Notes IGS, Inc.

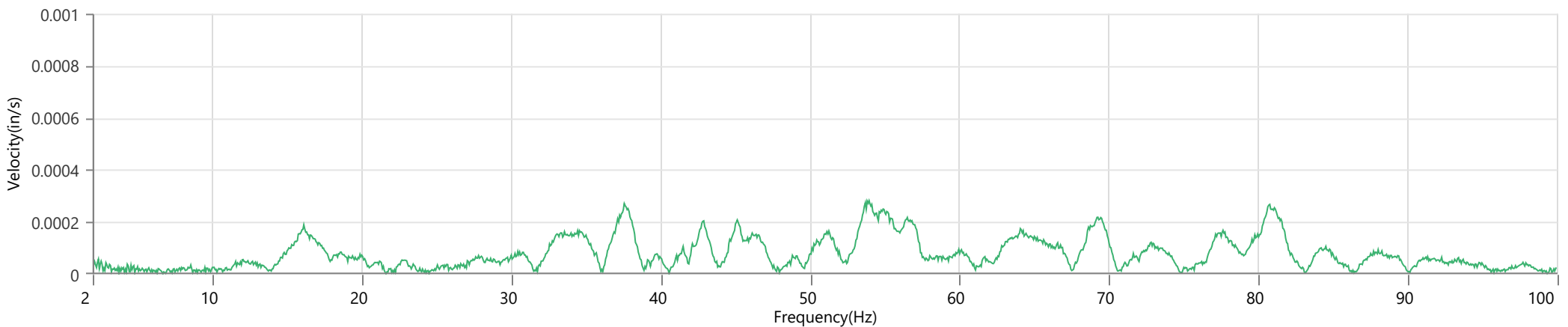
**Extended Note** N30.49911 W98.21538

**Post Event Notes** No text to be displayed.

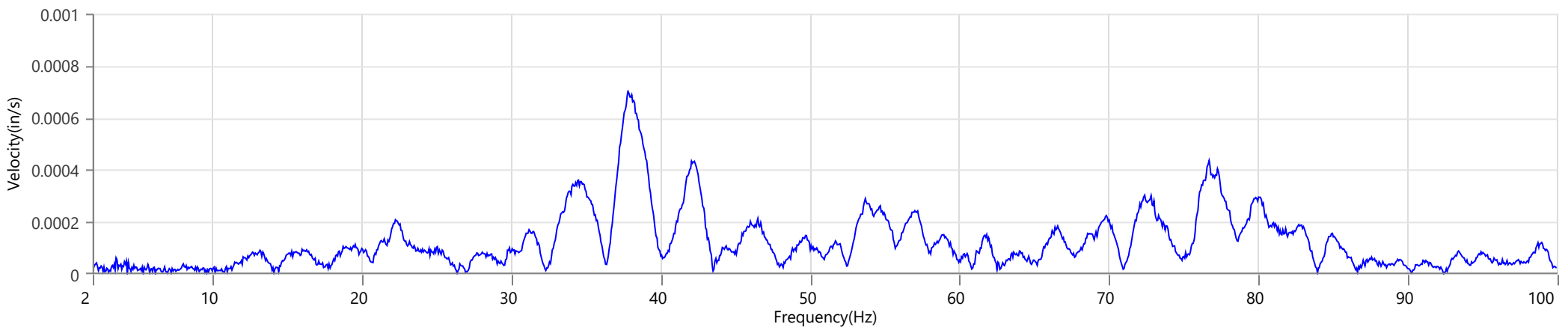
**Tran - Dominant Frequency 76.2 Hz, Amplitude 0.0009 in/s (Peak Particle Velocity: 0.0580 in/s)**



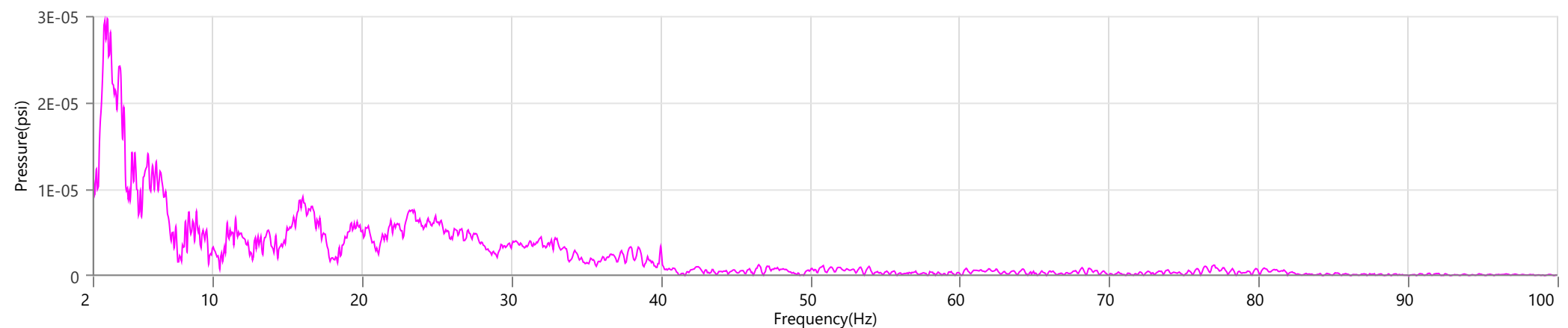
**Vert - Dominant Frequency 53.9 Hz, Amplitude 0.0003 in/s (Peak Particle Velocity: 0.0267 in/s)**



**Long - Dominant Frequency 37.8 Hz, Amplitude 0.0007 in/s (Peak Particle Velocity: 0.0484 in/s)**



**Mic - Dominant Frequency 3.0 Hz, Amplitude 0.00003 psi (Peak Sound Pressure Level: 0.001013 psi)**





**Waveform Trigger Source**  
**Trigger Level(s)**  
**Trigger Level (Mic)**  
**Pre-Trigger/Record Time**  
**Sample Rate**  
**Setup File Name**  
**Operator**

Vert at March 12, 2024 10:15:58  
 Geo 0.0200 in/s  
 Mic 0.01029 psi, 131 dB(L)  
 0.50 sec/8.0 sec (Fixed)  
 4096 sps  
 Spicewood Hwy 71 - Station 6.mmb  
 Operator

**Serial Number**  
**Model Number**  
**Battery Level**  
**Unit Calibration**  
**Event File Name**  
**USB Sensor Support**

UM7284  
 Micromate ISEE 10.90GC  
 3.8 volts  
 June 26, 2023 by Instantel  
 UM7284\_20240312101558.IDFW  
 Disabled

**Notes**

Location Station 6  
 Client Spicewood Crushed Stone  
 Company Hwy 71 Quarry  
 General Notes IGS, Inc.

**Extended Note** N30.495113 W98.206539

**Post Event Notes** No text to be displayed.

**Geophone**

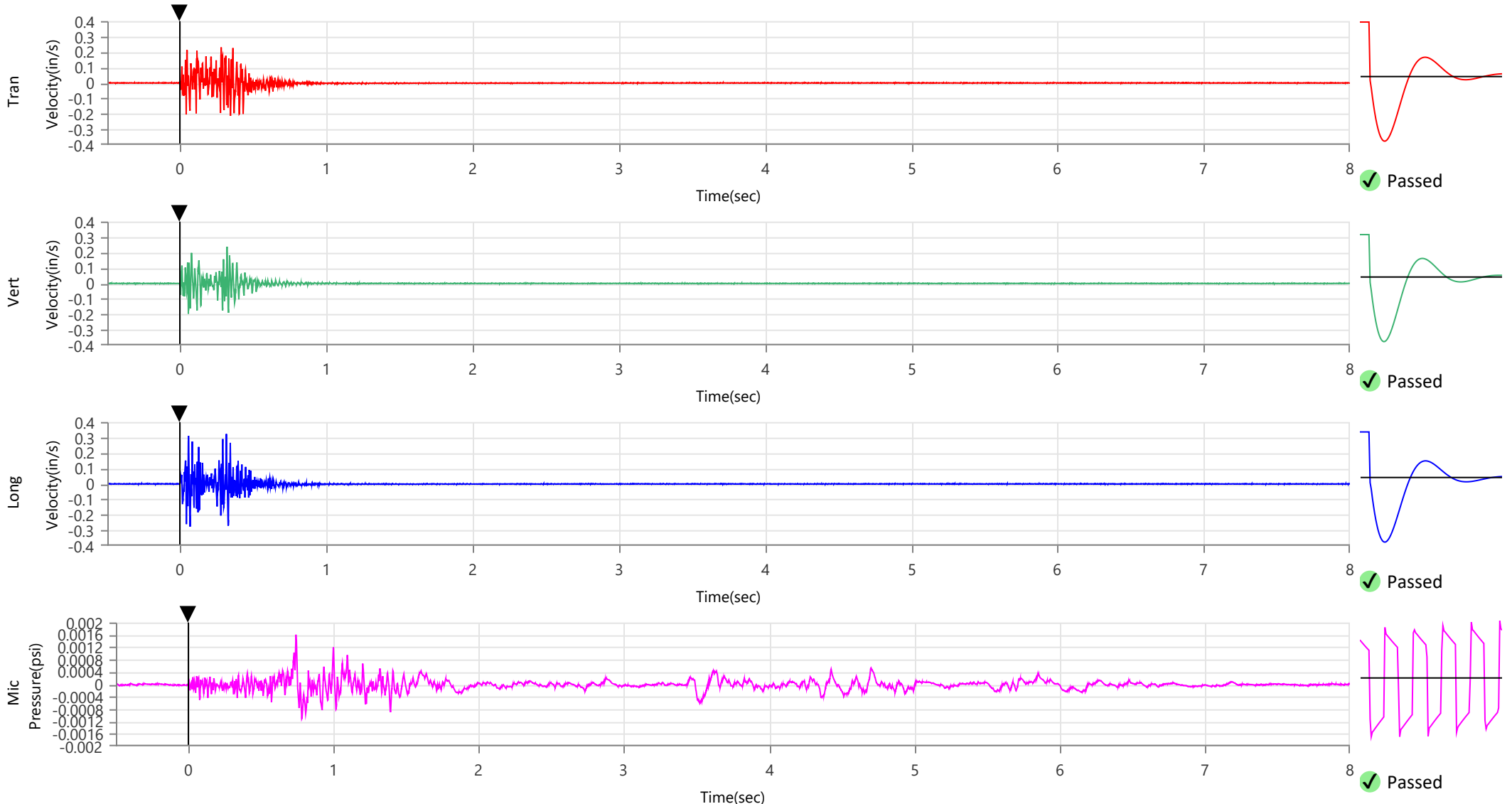
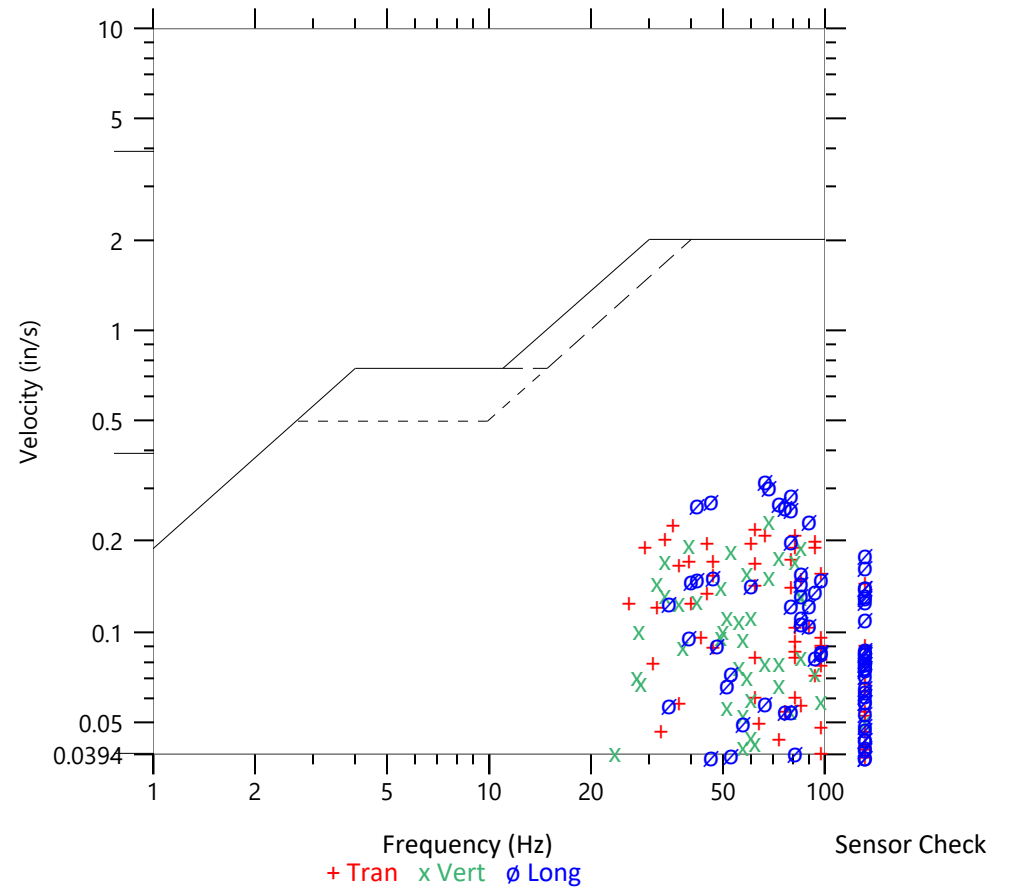
	Tran	Vert	Long
Peak Particle Velocity	0.2302 in/s	0.2374 in/s	0.3227 in/s
Zero Crossing Frequency	35.3 Hz	68.3 Hz	66.1 Hz
Time (Relative to Trigger)	0.280 sec	0.320 sec	0.315 sec
Peak Acceleration	0.342 g	0.326 g	0.375 g
Peak Displacement	0.001 in	0.001 in	0.001 in
Sensor Check	✓ Passed	✓ Passed	✓ Passed
Frequency	7.3 Hz	7.5 Hz	7.1 Hz
Overswing Ratio	3.3	3.4	3.8

Peak Vector Sum 0.3438 in/s at 0.056 sec

**ISEE Linear Microphone**

Peak Sound Pressure Level	0.001607 psi
Peak Sound Pressure Level	114.9 dB(L)
Time (Relative to Trigger)	0.741 sec
Zero Crossing Frequency	10.5 Hz
Sensor Check	✓ Passed
Frequency	20.5 Hz
Test Amplitude	1407 mv

**USBM R18507 And OSMRE**  
 Velocity versus Frequency (Zero Crossing)



**Waveform Trigger Source**  
**Trigger Level(s)**  
**Trigger Level (Mic)**  
**Pre-Trigger/Record Time**  
**Sample Rate**  
**Setup File Name**  
**Operator**

Vert at March 12, 2024 10:15:58  
 Geo 0.0200 in/s  
 Mic 0.01029 psi, 131 dB(L)  
 0.50 sec/8.0 sec (Fixed)  
 4096 sps  
 Spicewood Hwy 71 - Station 6.mmb  
 Operator

**Serial Number**  
**Model Number**  
**Battery Level**  
**Unit Calibration**  
**Event File Name**  
**USB Sensor Support**

UM7284  
 Micromate ISEE 10.90GC  
 3.8 volts  
 June 26, 2023 by Instantel  
 UM7284\_20240312101558.IDFW  
 Disabled

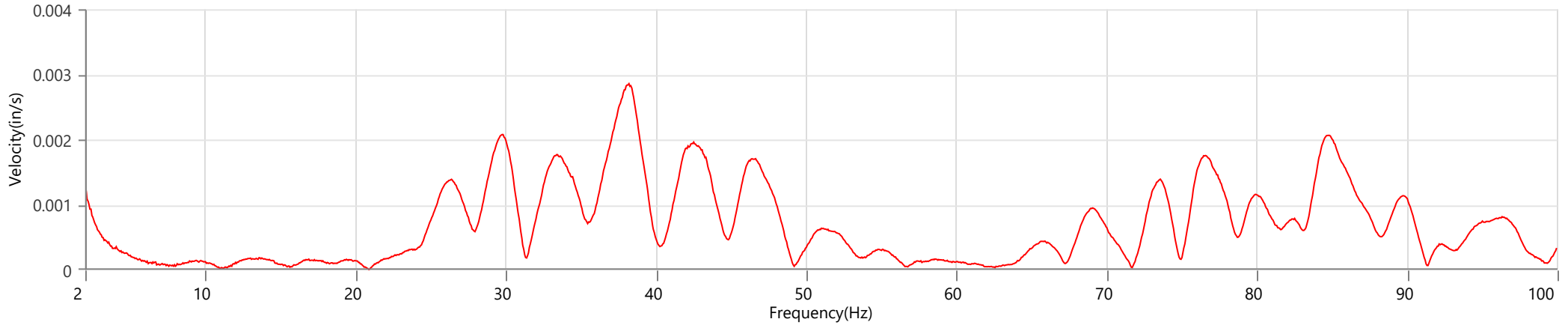
**Notes**

Location Station 6  
 Client Spicewood Crushed Stone  
 Company Hwy 71 Quarry  
 General Notes IGS, Inc.

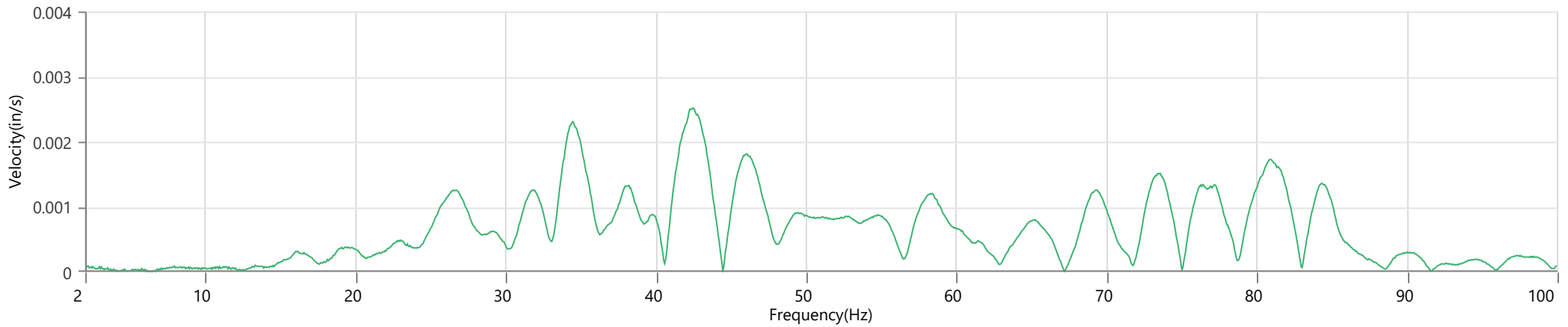
**Extended Note** N30.495113 W98.206539

**Post Event Notes** No text to be displayed.

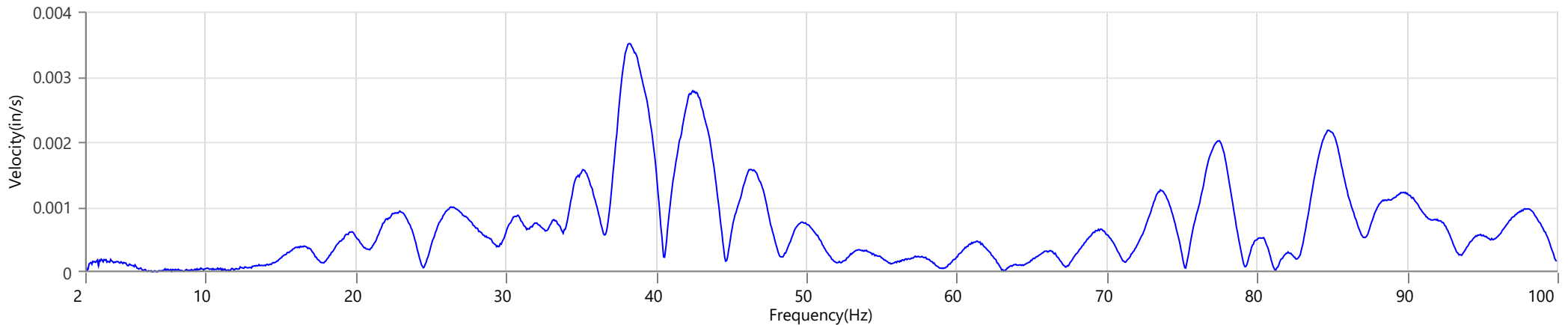
**Tran - Dominant Frequency 38.2 Hz, Amplitude 0.0029 in/s (Peak Particle Velocity: 0.2302 in/s)**



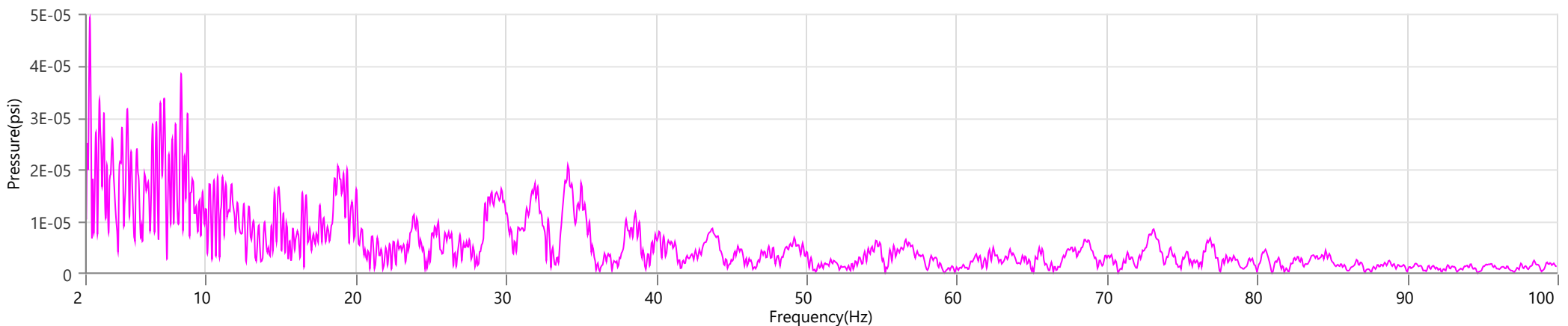
**Vert - Dominant Frequency 42.4 Hz, Amplitude 0.0025 in/s (Peak Particle Velocity: 0.2374 in/s)**



**Long - Dominant Frequency 38.2 Hz, Amplitude 0.0035 in/s (Peak Particle Velocity: 0.3227 in/s)**



**Mic - Dominant Frequency 2.3 Hz, Amplitude 0.00005 psi (Peak Sound Pressure Level: 0.001607 psi)**



**Start** March 12, 2024 00:00:05  
**Finish** March 12, 2024 23:29:59  
**Number of Intervals/Interval** 1409.91/60 sec  
**Sample Rate** 4096 sps  
**Setup File Name** Spicewood Hwy 71 - Noise 2.mmb  
**Operator** Operator

**Serial Number** UM11630  
**Model Number** Micromate ISEE 10.90GC  
**Battery Level** 3.8 volts  
**Unit Calibration** June 19, 2023 by Instantel  
**Microphone Calibration** UA10154, March 2, 2023 by Instantel  
**Event File Name** UM11630\_20240312000005.IDFH  
**USB Sensor Support** Disabled

**Notes**  
**Location** Noise 2  
**Client** Spicewood Crushed Stone  
**Company** Hwy 71 Quarry  
**General Notes** IGS, Inc.

**Extended Note** Station 5N30.49911 W98.21538

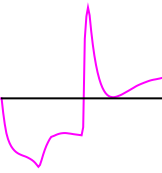
**Post Event Notes** No text to be displayed.

**Sound Level Microphone**

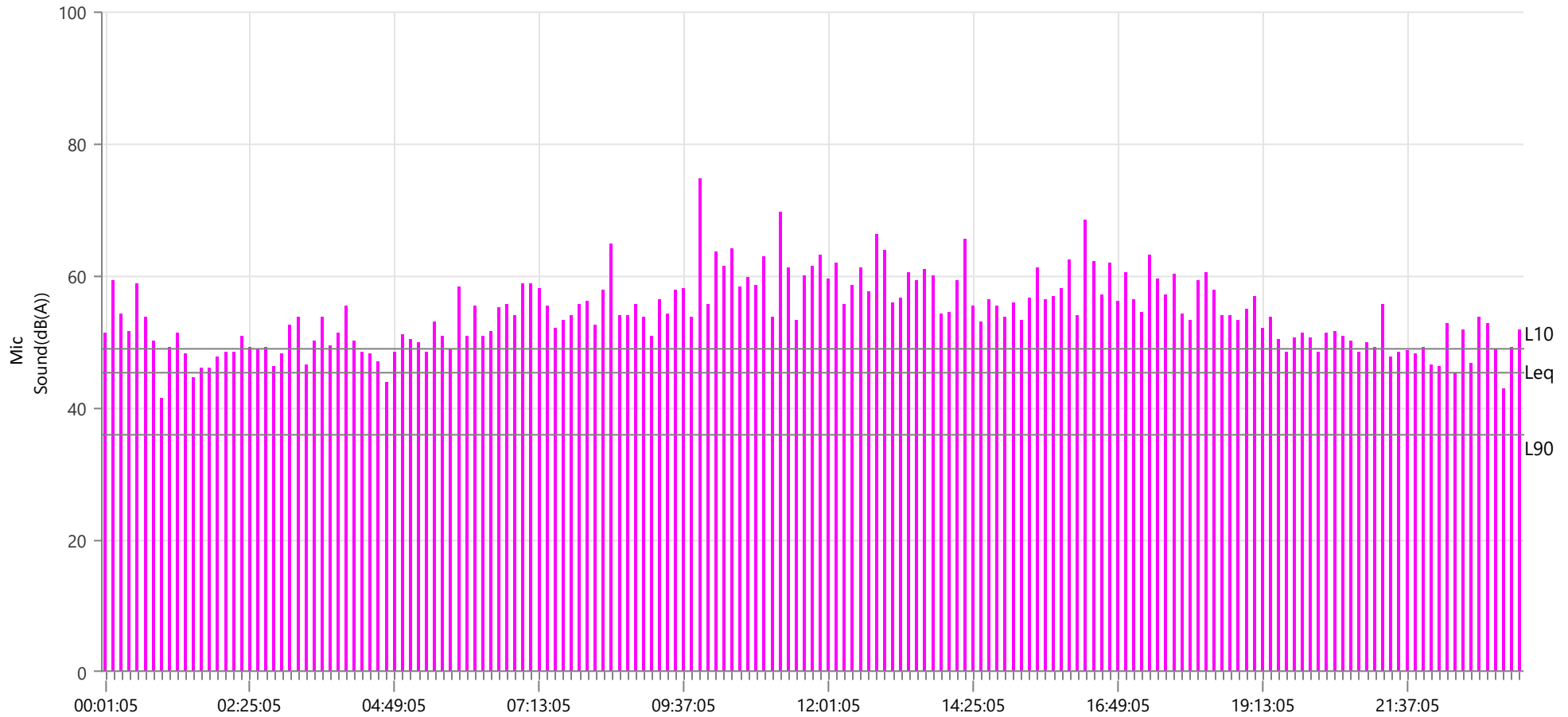
**LMax** 74.7 dB(A)  
**Date** Mar 12, 2024  
**Time** 10:00:05

	<b>LMin</b>	<b>L10</b>	<b>L90</b>	<b>Leq</b>
Sound(dB(A))	32.6	49	36	45.4
Sensor Check	✓ Passed			
Test Amplitude	1083 mv			

**Sensor Check**



✓ Passed



**Start** March 12, 2024 00:00:05  
**Finish** March 12, 2024 23:29:59  
**Number of Intervals/Interval** 1409.91/60 sec  
**Sample Rate** 4096 sps  
**Setup File Name** Spicewood Hwy 71 - Noise 3.mmb  
**Operator** Operator

**Serial Number** UM11574  
**Model Number** Micromate ISEE 10.90GC  
**Battery Level** 3.8 volts  
**Unit Calibration** June 28, 2023 by Instantel  
**Microphone Calibration** UA10761, July 29, 2022 by Instantel  
**Event File Name** UM11574\_20240312000005.IDFH  
**USB Sensor Support** Disabled

**Notes**  
**Location** Noise 3  
**Client** Spicewood Crushed Stone  
**Company** Hwy 71 Quarry  
**General Notes** IGS, Inc.

**Extended Note** N30.490958 W98.213495

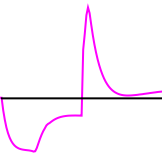
**Post Event Notes** No text to be displayed.

**Sound Level Microphone**

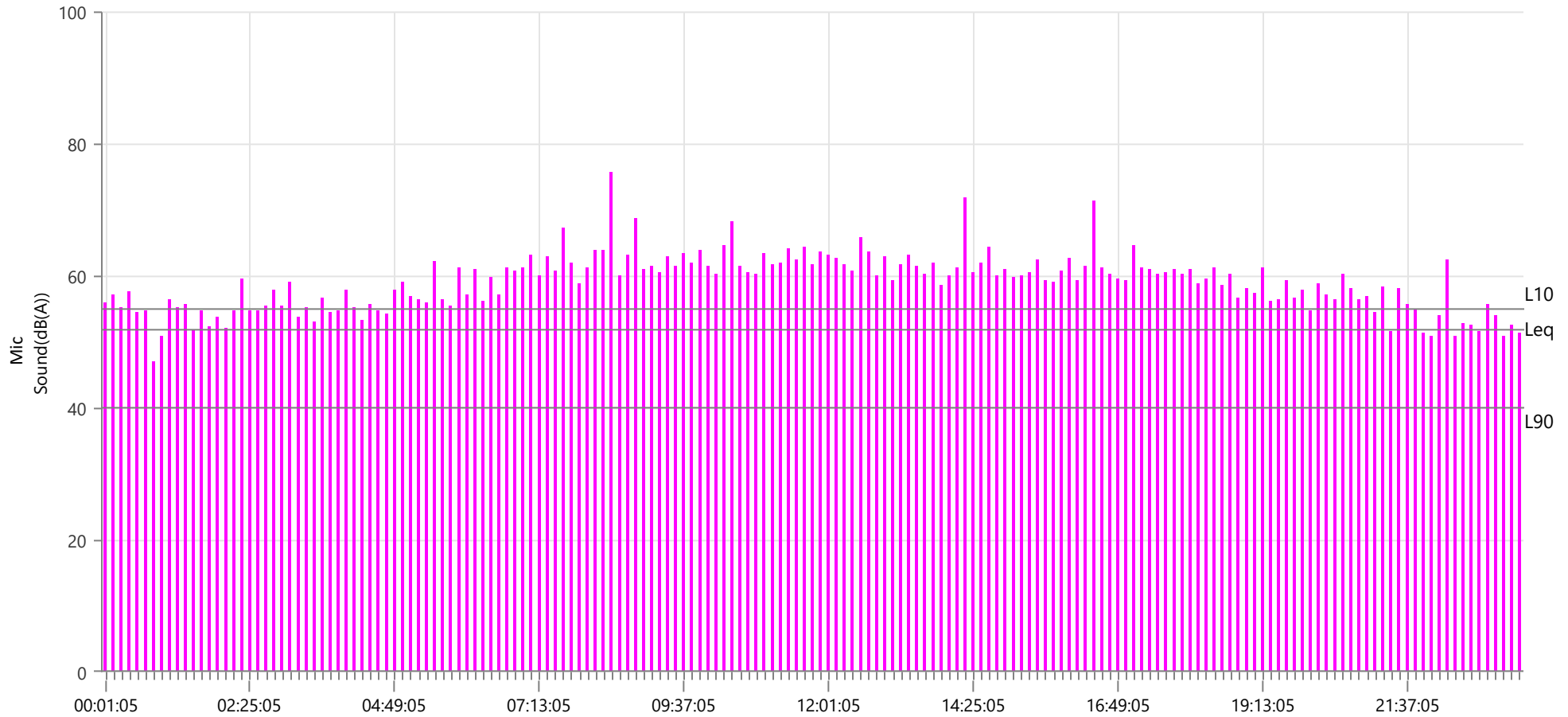
**LMax** 75.5 dB(A)  
**Date** Mar 12, 2024  
**Time** 08:30:05

	<b>LMin</b>	<b>L10</b>	<b>L90</b>	<b>Leq</b>
Sound(dB(A))	30.9	55	40	51.8
Sensor Check	✓ Passed			
Test Amplitude	1101 mv			

Sensor Check



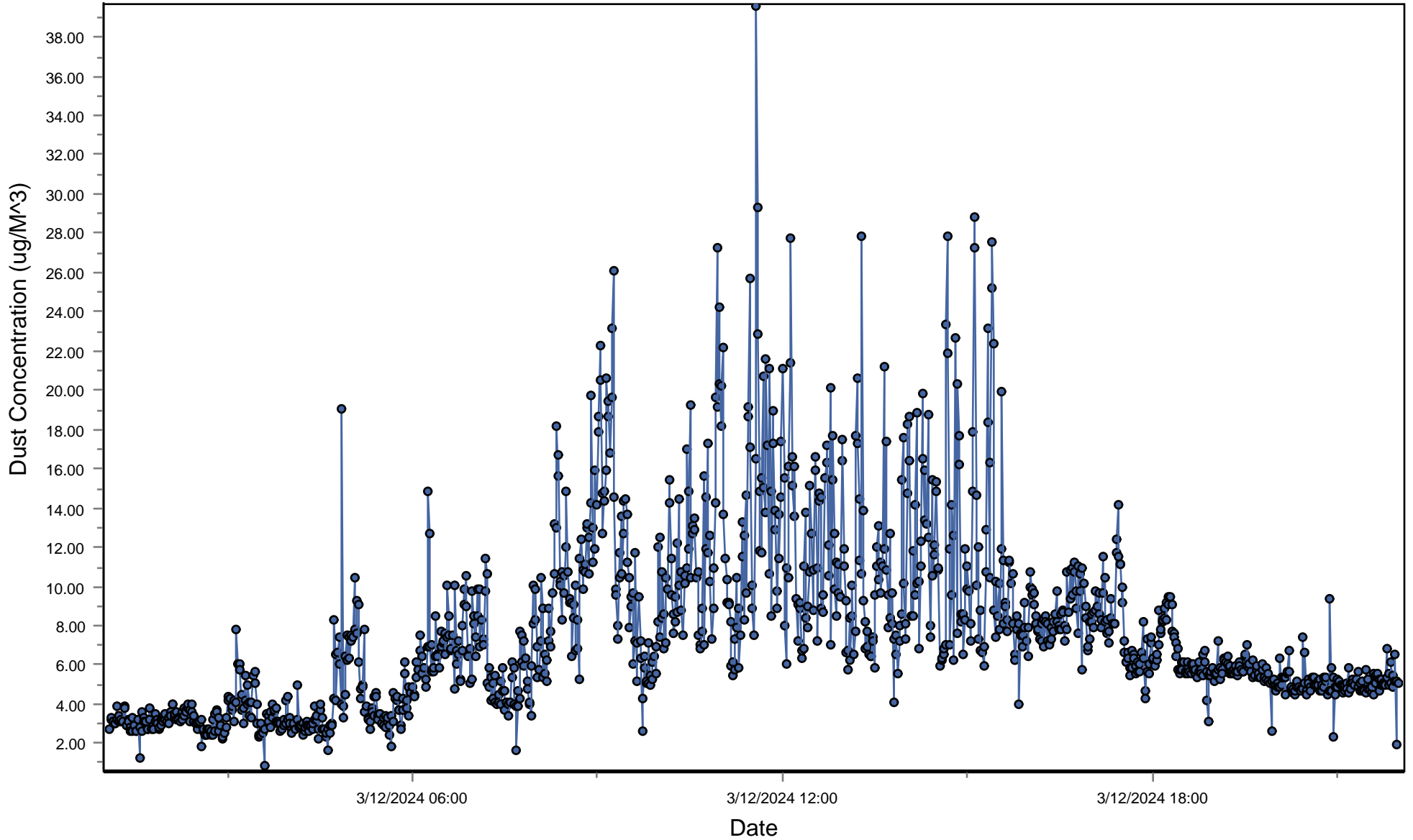
✓ Passed



# Spicewood Crushed Stone - Hwy 71 Quarry

## South Dust Monitor

● D100@AvgPartL



# Spicewood Crushed Stone - Hwy 71 Quarry

## North Dust Monitor

● D100@AvgPartL

