

**Waveform Trigger Source**  
**Trigger Level(s)**  
**Trigger Level (Mic)**  
**Pre-Trigger/Record Time**  
**Sample Rate**  
**Setup File Name**  
**Operator**

Vert at March 26, 2024 11:03:02  
 Geo 0.0200 in/s  
 Mic 0.01029 psi, 131 dB(L)  
 0.25 sec/8.0 sec (Fixed)  
 4096 sps  
 Spicewood Hwy 71 - Station 1.mmb  
 Operator

**Serial Number**  
**Model Number**  
**Battery Level**  
**Unit Calibration**  
**Event File Name**  
**USB Sensor Support**

UM20119  
 Micromate ISEE 10.90GC  
 3.8 volts  
 April 24, 2023 by Instantel  
 UM20119\_20240326110302.IDFW  
 Disabled

**Notes**

Location Station 1  
 Client Spicewood Crushed Stone  
 Company Hwy 71 Quarry  
 General Notes IGS, Inc.

**Extended Note** N30.49572 W98.21577

**Post Event Notes** No text to be displayed.

**Geophone**

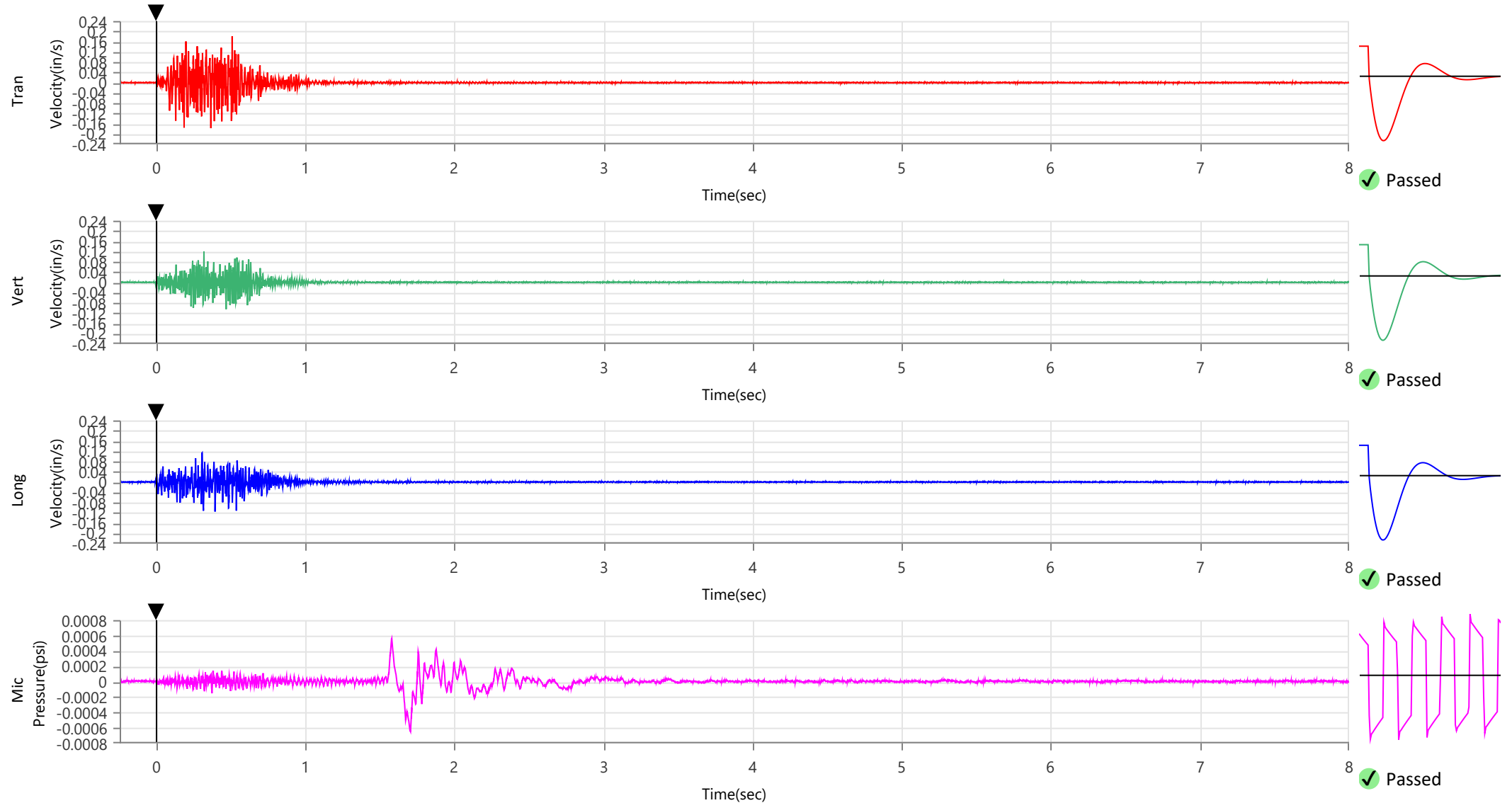
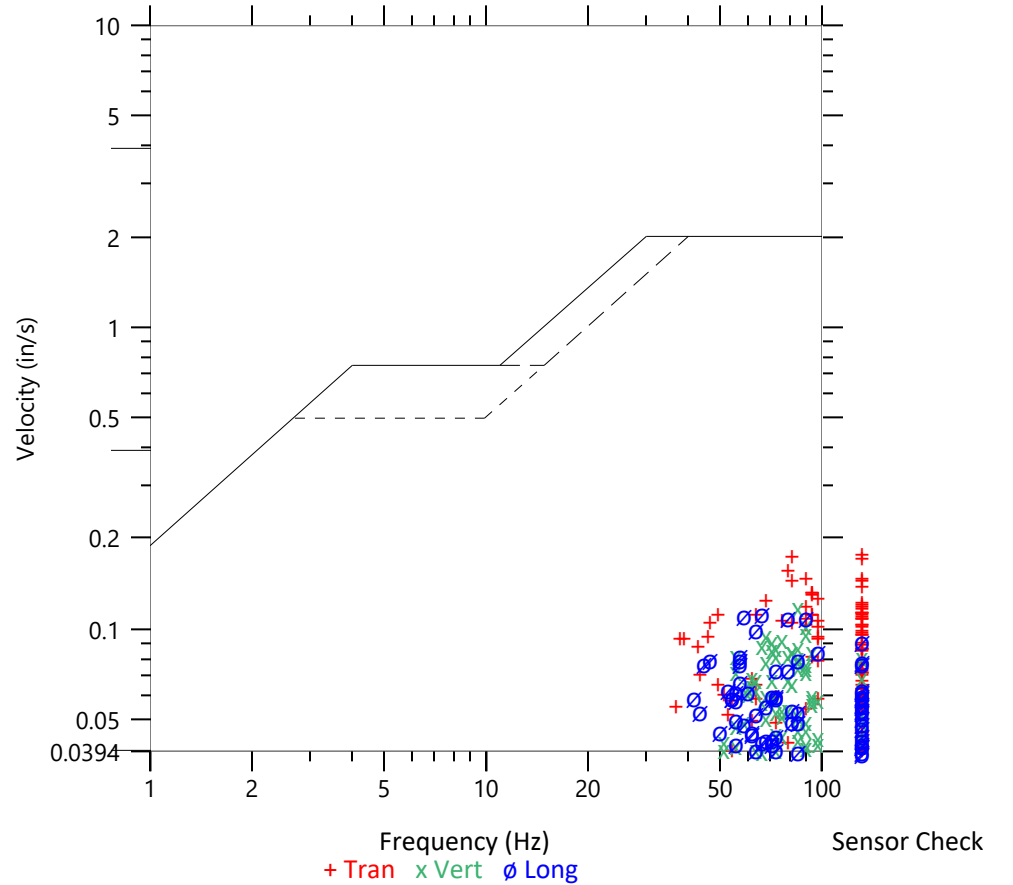
	Tran	Vert	Long
Peak Particle Velocity	0.1806 in/s	0.1207 in/s	0.1151 in/s
Zero Crossing Frequency	>100 Hz	85.3 Hz	66.1 Hz
Time (Relative to Trigger)	0.509 sec	0.320 sec	0.395 sec
Peak Acceleration	0.319 g	0.174 g	0.188 g
Peak Displacement	0.000 in	0.000 in	0.000 in
Sensor Check	✓ Passed	✓ Passed	✓ Passed
Frequency	6.9 Hz	7.3 Hz	7.1 Hz
Overswing Ratio	5.0	4.5	4.9

Peak Vector Sum 0.1998 in/s at 0.509 sec

**ISEE Linear Microphone**

Peak Sound Pressure Level 0.000648 psi  
 Peak Sound Pressure Level 107.0 dB(L)  
 Time (Relative to Trigger) 1.705 sec  
 Zero Crossing Frequency 3.7 Hz  
 Sensor Check ✓ Passed  
 Frequency 19.7 Hz  
 Test Amplitude 1556 mv

**USBM RI8507 And OSMRE**  
Velocity versus Frequency (Zero Crossing)



**Waveform Trigger Source**  
**Trigger Level(s)**  
**Trigger Level (Mic)**  
**Pre-Trigger/Record Time**  
**Sample Rate**  
**Setup File Name**  
**Operator**

Vert at March 26, 2024 11:03:02  
 Geo 0.0200 in/s  
 Mic 0.01029 psi, 131 dB(L)  
 0.25 sec/8.0 sec (Fixed)  
 4096 sps  
 Spicewood Hwy 71 - Station 1.mmb  
 Operator

**Serial Number**  
**Model Number**  
**Battery Level**  
**Unit Calibration**  
**Event File Name**  
**USB Sensor Support**

UM20119  
 Micromate ISEE 10.90GC  
 3.8 volts  
 April 24, 2023 by Instantel  
 UM20119\_20240326110302.IDFW  
 Disabled

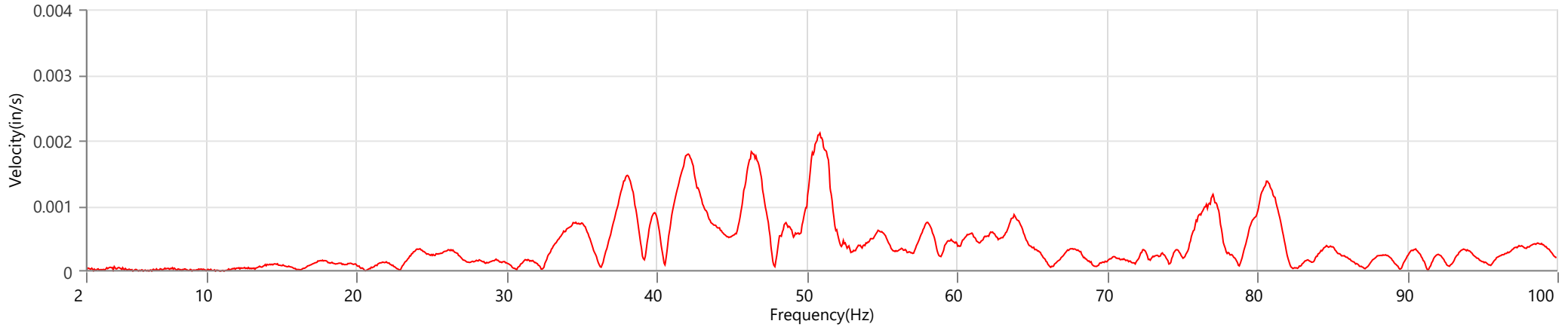
**Notes**

Location Station 1  
 Client Spicewood Crushed Stone  
 Company Hwy 71 Quarry  
 General Notes IGS, Inc.

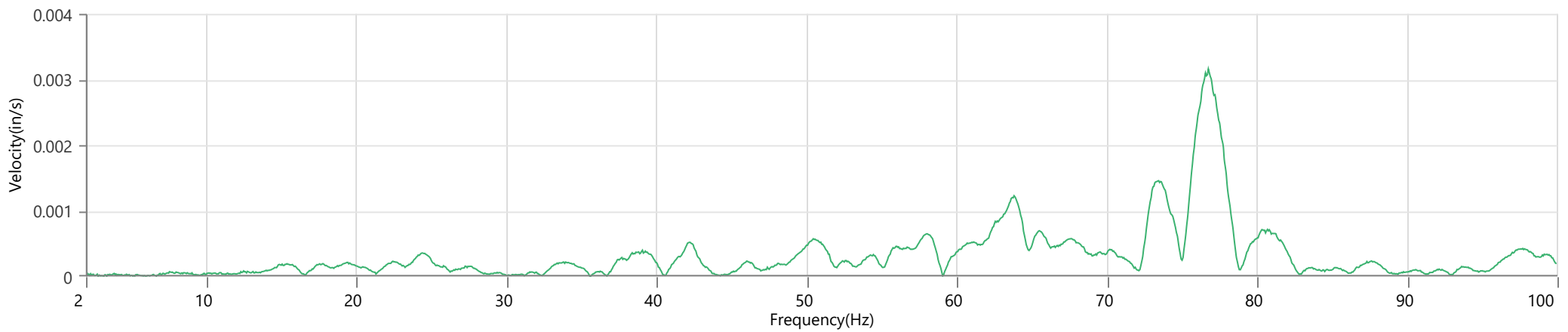
**Extended Note** N30.49572 W98.21577

**Post Event Notes** No text to be displayed.

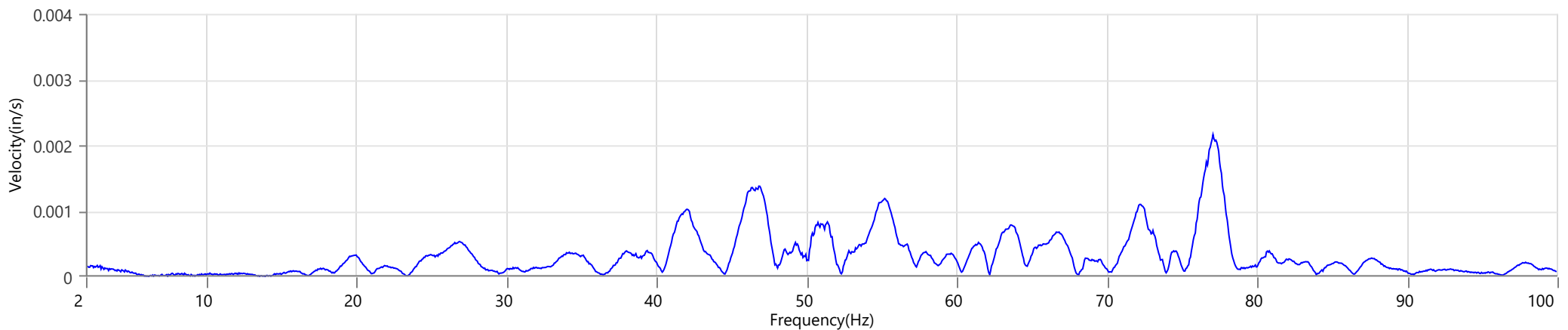
**Tran - Dominant Frequency 50.9 Hz, Amplitude 0.0021 in/s (Peak Particle Velocity: 0.1806 in/s)**



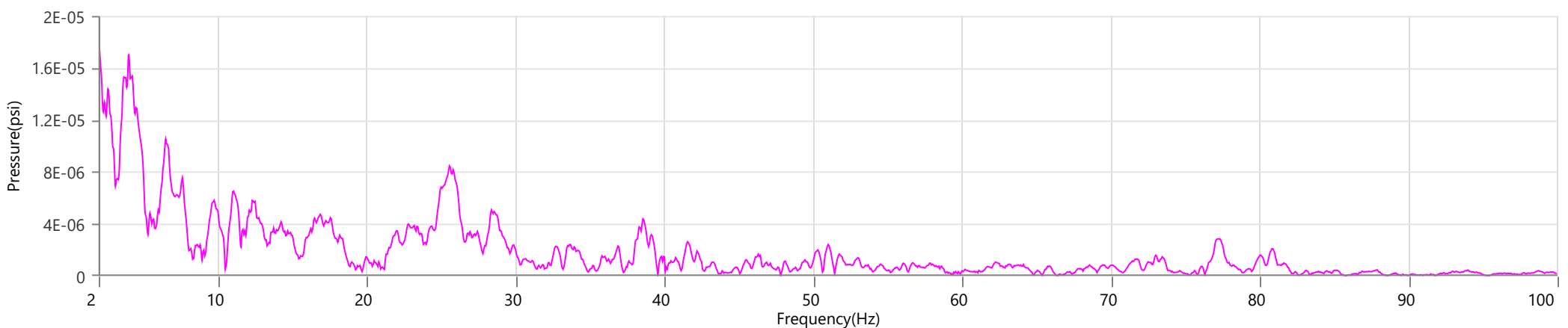
**Vert - Dominant Frequency 76.8 Hz, Amplitude 0.0032 in/s (Peak Particle Velocity: 0.1207 in/s)**



**Long - Dominant Frequency 77.1 Hz, Amplitude 0.0022 in/s (Peak Particle Velocity: 0.1151 in/s)**



**Mic - Dominant Frequency 2.0 Hz, Amplitude 0.00002 psi (Peak Sound Pressure Level: 0.000648 psi)**



**Waveform Trigger Source**  
**Trigger Level(s)**  
**Trigger Level (Mic)**  
**Pre-Trigger/Record Time**  
**Sample Rate**  
**Setup File Name**  
**Operator**

Tran at March 26, 2024 11:03:01  
 Geo 0.0200 in/s  
 Mic 0.01029 psi, 131 dB(L)  
 0.50 sec/8.0 sec (Fixed)  
 4096 sps  
 Spicewood Hwy 71 - Station 2.mmb  
 Operator

**Serial Number**  
**Model Number**  
**Battery Level**  
**Unit Calibration**  
**Event File Name**  
**USB Sensor Support**

UM7306  
 Micromate ISEE 10.90GC  
 3.8 volts  
 August 18, 2023 by Instantel  
 UM7306\_20240326110301.IDFW  
 Disabled

**Notes**

Location Station 2  
 Client Spicewood Crushed Stone  
 Company Hwy 71  
 General Notes IGS, Inc

**Extended Note** N30.49650 W21572

**Post Event Notes** No text to be displayed.

**Geophone**

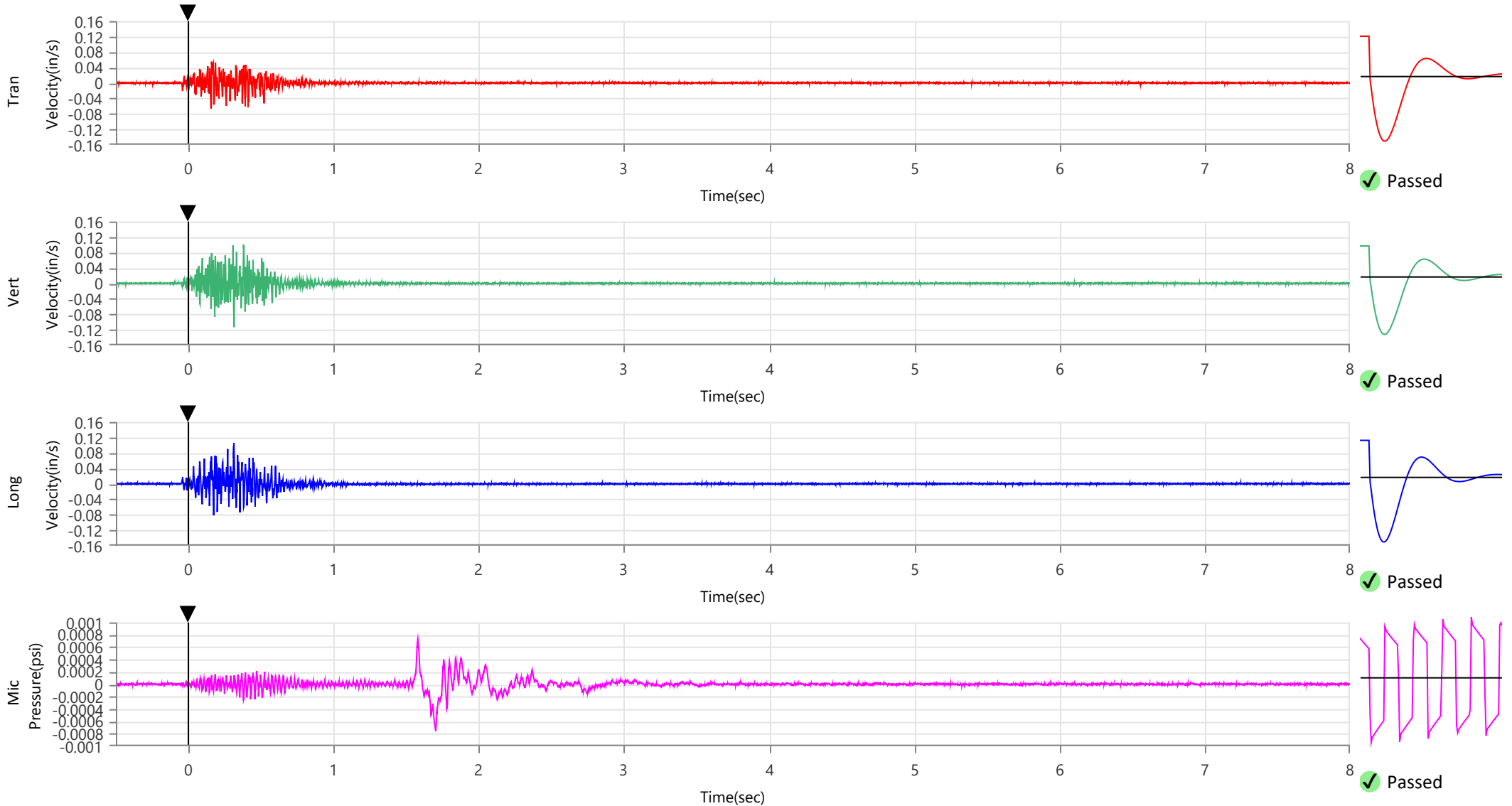
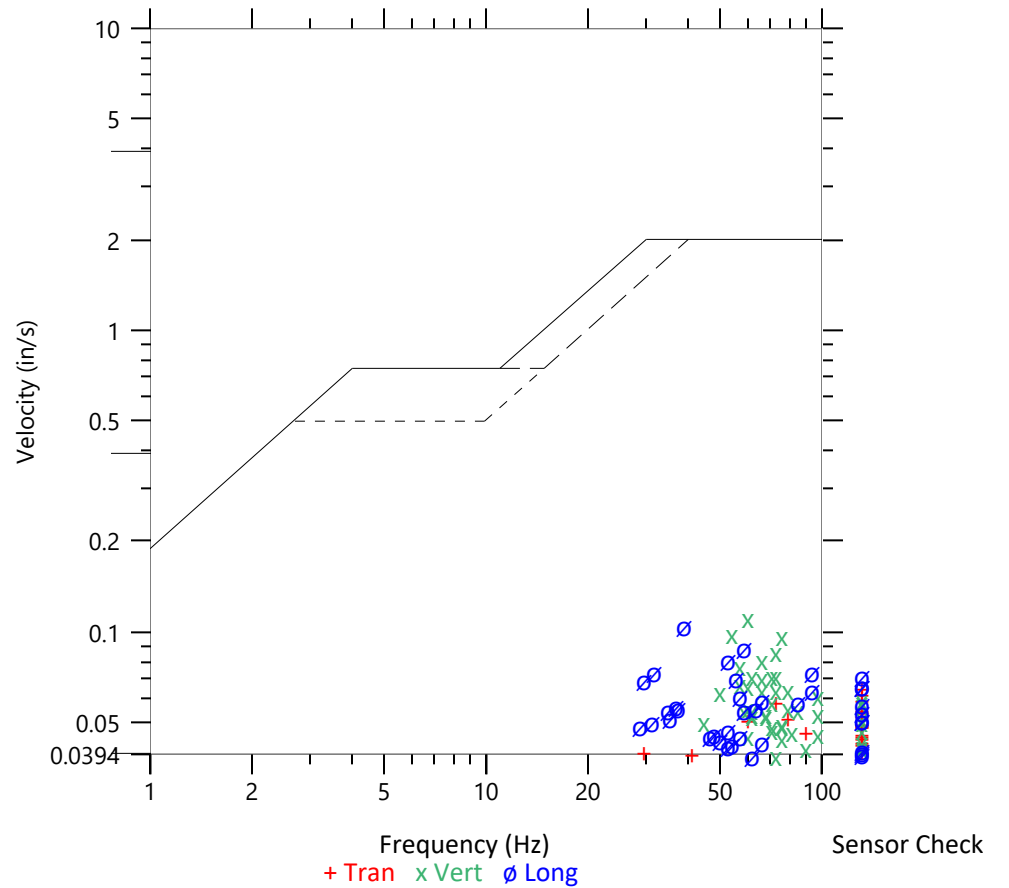
	Tran	Vert	Long
Peak Particle Velocity	0.0664 in/s	0.1133 in/s	0.1055 in/s
Zero Crossing Frequency	>100 Hz	60.2 Hz	38.6 Hz
Time (Relative to Trigger)	0.156 sec	0.315 sec	0.313 sec
Peak Acceleration	0.138 g	0.165 g	0.148 g
Peak Displacement	0.000 in	0.000 in	0.000 in
Sensor Check	✓ Passed	✓ Passed	✓ Passed
Frequency	7.1 Hz	7.5 Hz	7.7 Hz
Overswing Ratio	3.5	3.2	3.1

Peak Vector Sum 0.1399 in/s at 0.314 sec

**ISEE Linear Microphone**

Peak Sound Pressure Level 0.000761 psi  
 Peak Sound Pressure Level 108.4 dB(L)  
 Time (Relative to Trigger) 1.704 sec  
 Zero Crossing Frequency 3.7 Hz  
 Sensor Check ✓ Passed  
 Frequency 19.7 Hz  
 Test Amplitude 1530 mv

**USBM R18507 And OSMRE**  
 Velocity versus Frequency (Zero Crossing)



**Waveform Trigger Source**  
**Trigger Level(s)**  
**Trigger Level (Mic)**  
**Pre-Trigger/Record Time**  
**Sample Rate**  
**Setup File Name**  
**Operator**

Tran at March 26, 2024 11:03:01  
 Geo 0.0200 in/s  
 Mic 0.01029 psi, 131 dB(L)  
 0.50 sec/8.0 sec (Fixed)  
 4096 sps  
 Spicewood Hwy 71 - Station 2.mmb  
 Operator

**Serial Number**  
**Model Number**  
**Battery Level**  
**Unit Calibration**  
**Event File Name**  
**USB Sensor Support**

UM7306  
 Micromate ISEE 10.90GC  
 3.8 volts  
 August 18, 2023 by Instantel  
 UM7306\_20240326110301.IDFW  
 Disabled

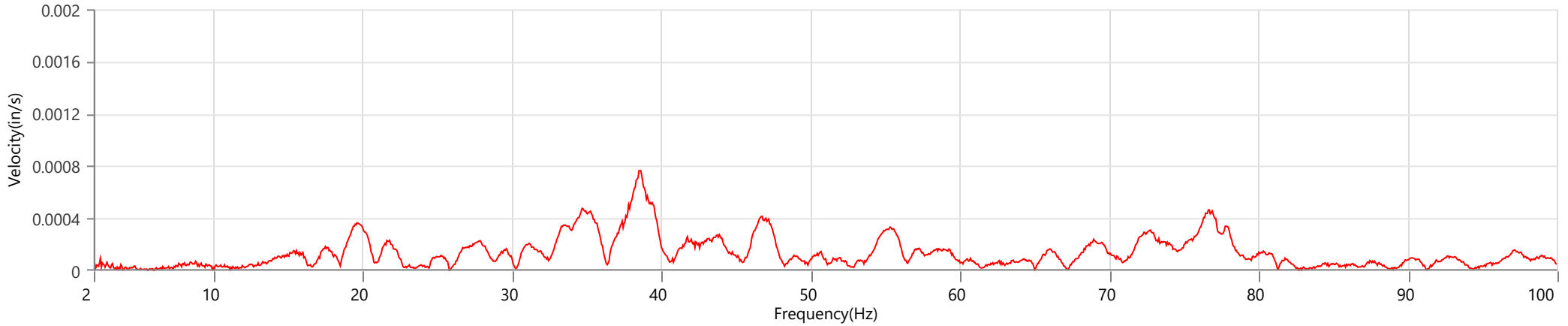
**Notes**

Location Station 2  
 Client Spicewood Crushed Stone  
 Company Hwy 71  
 General Notes IGS, Inc

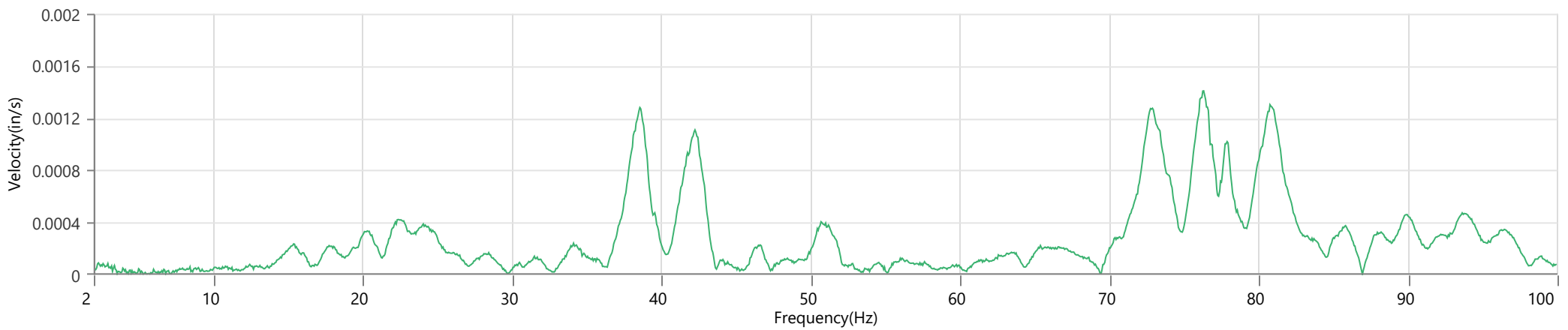
**Extended Note** N30.49650 W21572

**Post Event Notes** No text to be displayed.

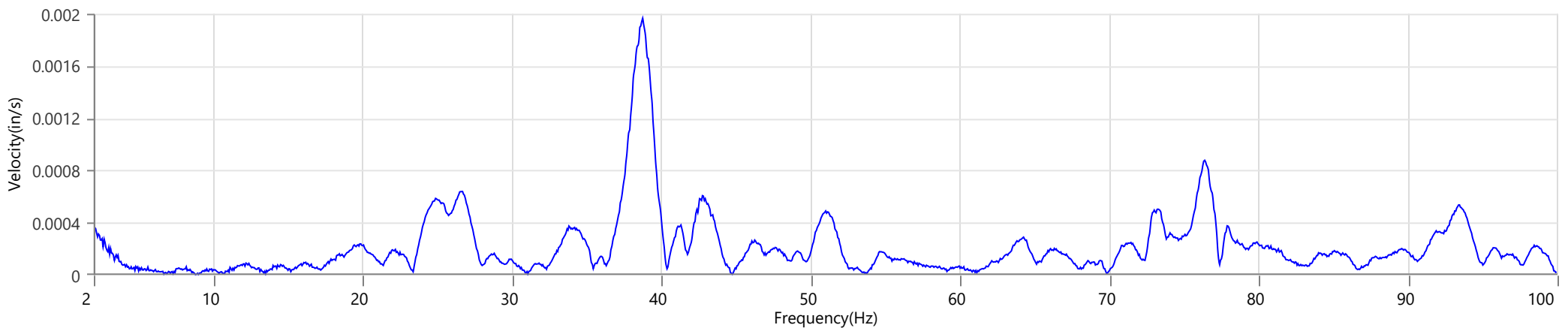
**Tran - Dominant Frequency 38.6 Hz, Amplitude 0.0008 in/s (Peak Particle Velocity: 0.0664 in/s)**



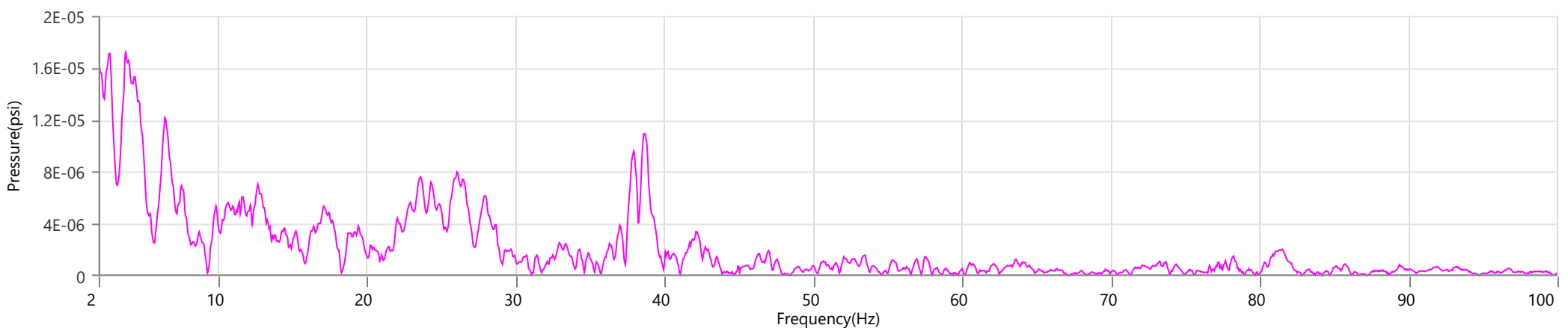
**Vert - Dominant Frequency 76.3 Hz, Amplitude 0.0014 in/s (Peak Particle Velocity: 0.1133 in/s)**



**Long - Dominant Frequency 38.8 Hz, Amplitude 0.0020 in/s (Peak Particle Velocity: 0.1055 in/s)**



**Mic - Dominant Frequency 3.8 Hz, Amplitude 0.00002 psi (Peak Sound Pressure Level: 0.000761 psi)**



**Waveform Trigger Source**  
**Trigger Level(s)**  
**Trigger Level (Mic)**  
**Pre-Trigger/Record Time**  
**Sample Rate**  
**Setup File Name**  
**Operator**

Vert at March 26, 2024 11:03:02  
 Geo 0.0200 in/s  
 Mic 0.01029 psi, 131 dB(L)  
 0.50 sec/8.0 sec (Fixed)  
 4096 sps  
 Spicewood Hwy 71 - Station 3.mmb  
 Operator

**Serial Number**  
**Model Number**  
**Battery Level**  
**Unit Calibration**  
**Event File Name**  
**USB Sensor Support**

UM20082  
 Micromate ISEE 10.90GC  
 3.8 volts  
 May 19, 2023 by Instantel  
 UM20082\_20240326110302.IDFW  
 Disabled

**Notes**

Location Station 3  
 Client Spicewood Crushed Stone  
 Company Hwy 71 Quarry  
 General Notes IGS, Inc.

**Extended Note** N30.49742 W98.21566

**Post Event Notes** No text to be displayed.

**Geophone**

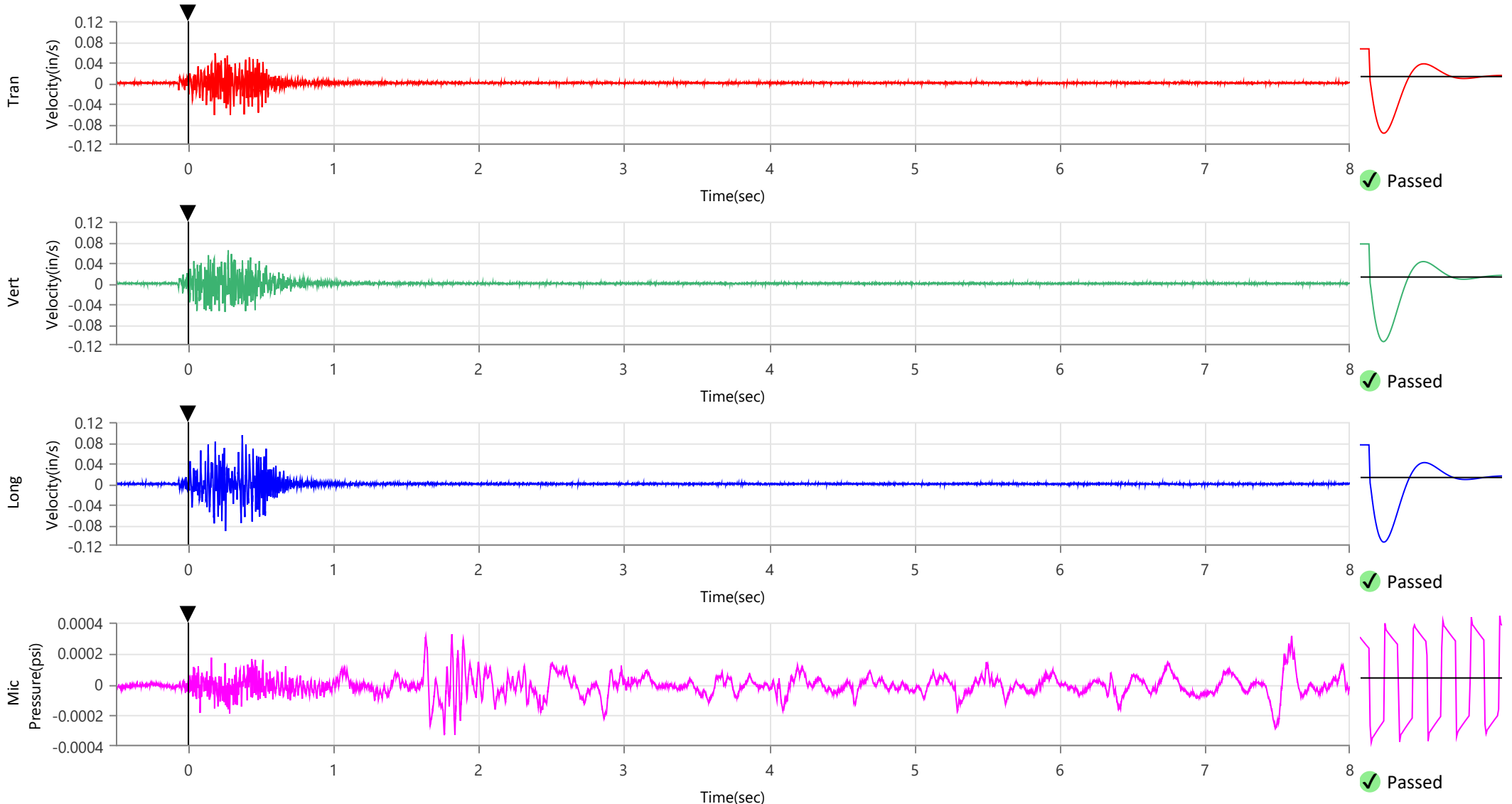
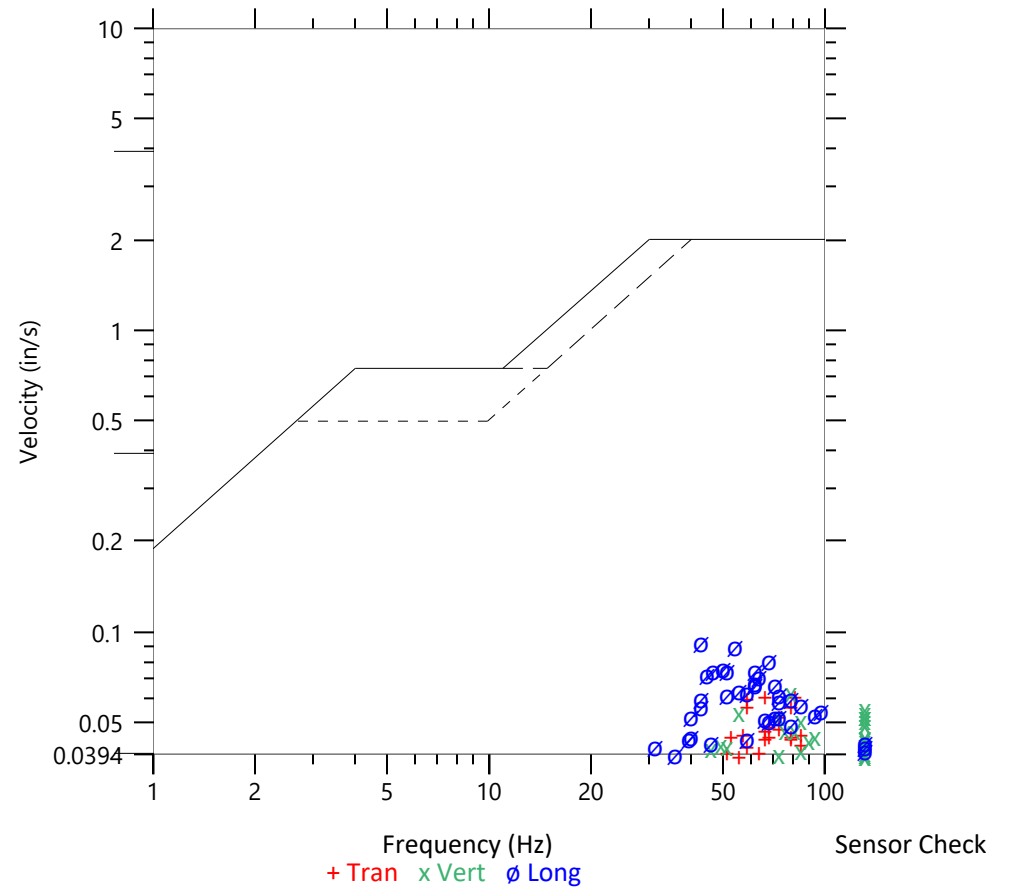
	Tran	Vert	Long
Peak Particle Velocity	0.0624 in/s	0.0645 in/s	0.0946 in/s
Zero Crossing Frequency	81.9 Hz	81.9 Hz	43.6 Hz
Time (Relative to Trigger)	0.179 sec	0.275 sec	0.371 sec
Peak Acceleration	0.092 g	0.115 g	0.109 g
Peak Displacement	0.000 in	0.000 in	0.000 in
Sensor Check	✓ Passed	✓ Passed	✓ Passed
Frequency	7.3 Hz	7.5 Hz	7.3 Hz
Overswing Ratio	4.4	4.1	4.3

Peak Vector Sum 0.1067 in/s at 0.178 sec

**ISEE Linear Microphone**

Peak Sound Pressure Level 0.000329 psi  
 Peak Sound Pressure Level 101.1 dB(L)  
 Time (Relative to Trigger) 1.762 sec  
 Zero Crossing Frequency 8.0 Hz  
 Sensor Check ✓ Passed  
 Frequency 20.5 Hz  
 Test Amplitude 1630 mv

**USBM R18507 And OSMRE**  
 Velocity versus Frequency (Zero Crossing)



**Waveform Trigger Source**  
**Trigger Level(s)**  
**Trigger Level (Mic)**  
**Pre-Trigger/Record Time**  
**Sample Rate**  
**Setup File Name**  
**Operator**

Vert at March 26, 2024 11:03:02  
 Geo 0.0200 in/s  
 Mic 0.01029 psi, 131 dB(L)  
 0.50 sec/8.0 sec (Fixed)  
 4096 sps  
 Spicewood Hwy 71 - Station 3.mmb  
 Operator

**Serial Number**  
**Model Number**  
**Battery Level**  
**Unit Calibration**  
**Event File Name**  
**USB Sensor Support**

UM20082  
 Micromate ISEE 10.90GC  
 3.8 volts  
 May 19, 2023 by Instantel  
 UM20082\_20240326110302.IDFW  
 Disabled

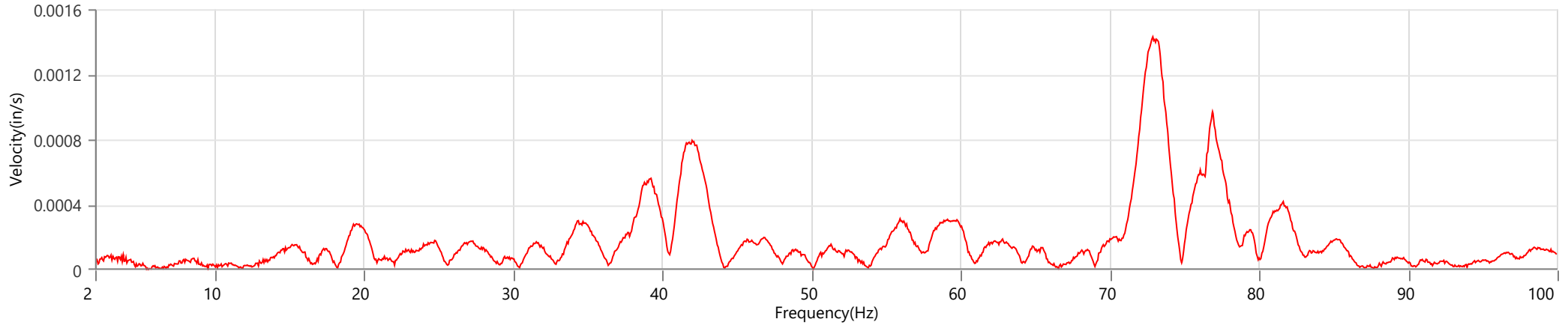
**Notes**

Location Station 3  
 Client Spicewood Crushed Stone  
 Company Hwy 71 Quarry  
 General Notes IGS, Inc.

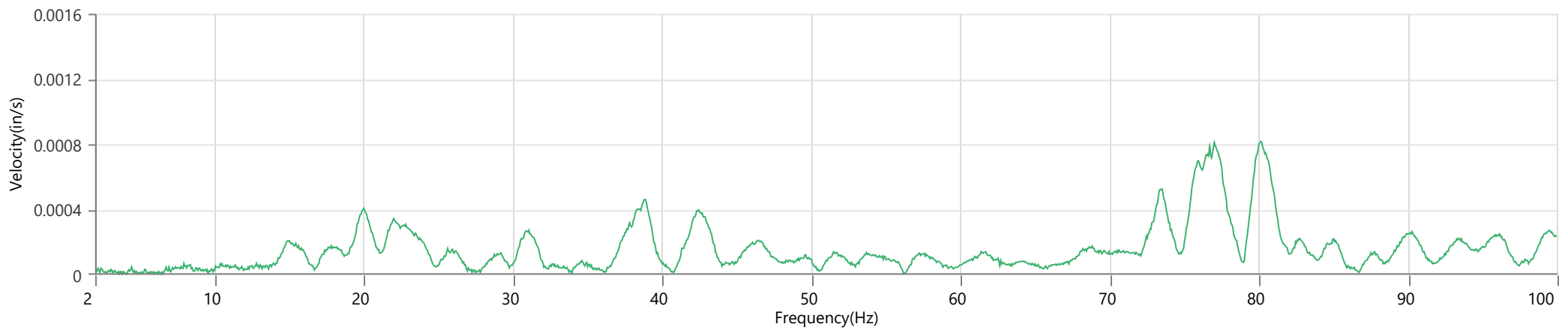
**Extended Note** N30.49742 W98.21566

**Post Event Notes** No text to be displayed.

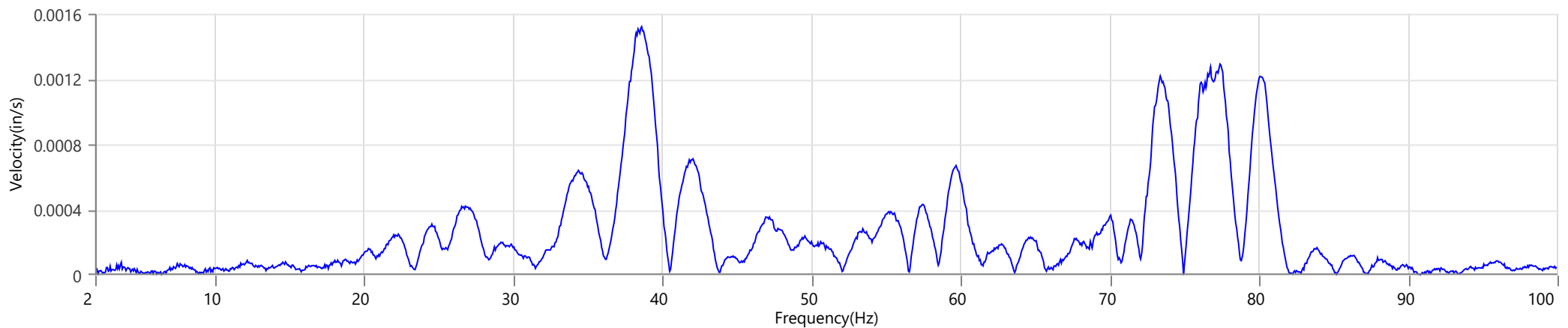
**Tran - Dominant Frequency 72.9 Hz, Amplitude 0.0014 in/s (Peak Particle Velocity: 0.0624 in/s)**



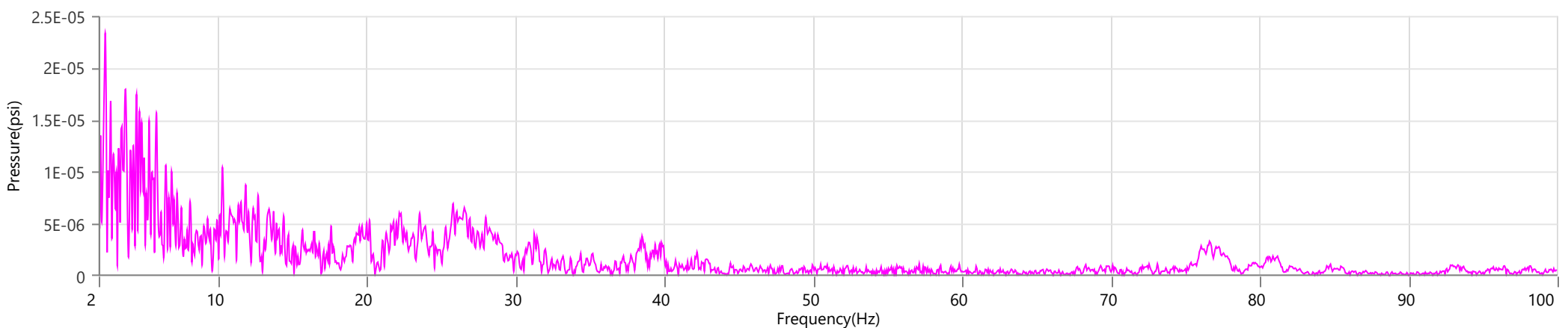
**Vert - Dominant Frequency 80.1 Hz, Amplitude 0.0008 in/s (Peak Particle Velocity: 0.0645 in/s)**



**Long - Dominant Frequency 38.6 Hz, Amplitude 0.0015 in/s (Peak Particle Velocity: 0.0946 in/s)**



**Mic - Dominant Frequency 2.4 Hz, Amplitude 0.00002 psi (Peak Sound Pressure Level: 0.000329 psi)**





**Waveform Trigger Source**  
**Trigger Level(s)**  
**Trigger Level (Mic)**  
**Pre-Trigger/Record Time**  
**Sample Rate**  
**Setup File Name**  
**Operator**

Tran at March 26, 2024 11:03:02  
 Geo 0.0200 in/s  
 Mic 0.01029 psi, 131 dB(L)  
 0.25 sec/8.0 sec (Fixed)  
 4096 sps  
 Spicewood Hwy 71 - Station 4.mmb  
 Operator

**Serial Number**  
**Model Number**  
**Battery Level**  
**Unit Calibration**  
**Event File Name**  
**USB Sensor Support**

UM7490  
 Micromate ISEE 10.90GC  
 3.8 volts  
 February 23, 2023 by InstanTel  
 UM7490\_20240326110302.IDFW  
 Disabled

**Notes**

Location Station 4  
 Client Spicewood Crushed Stone  
 Company Hwy 71 Quarry  
 General Notes IGS, Inc.

**Extended Note** N30.49821 W98.21578

**Post Event Notes** No text to be displayed.

**Geophone**

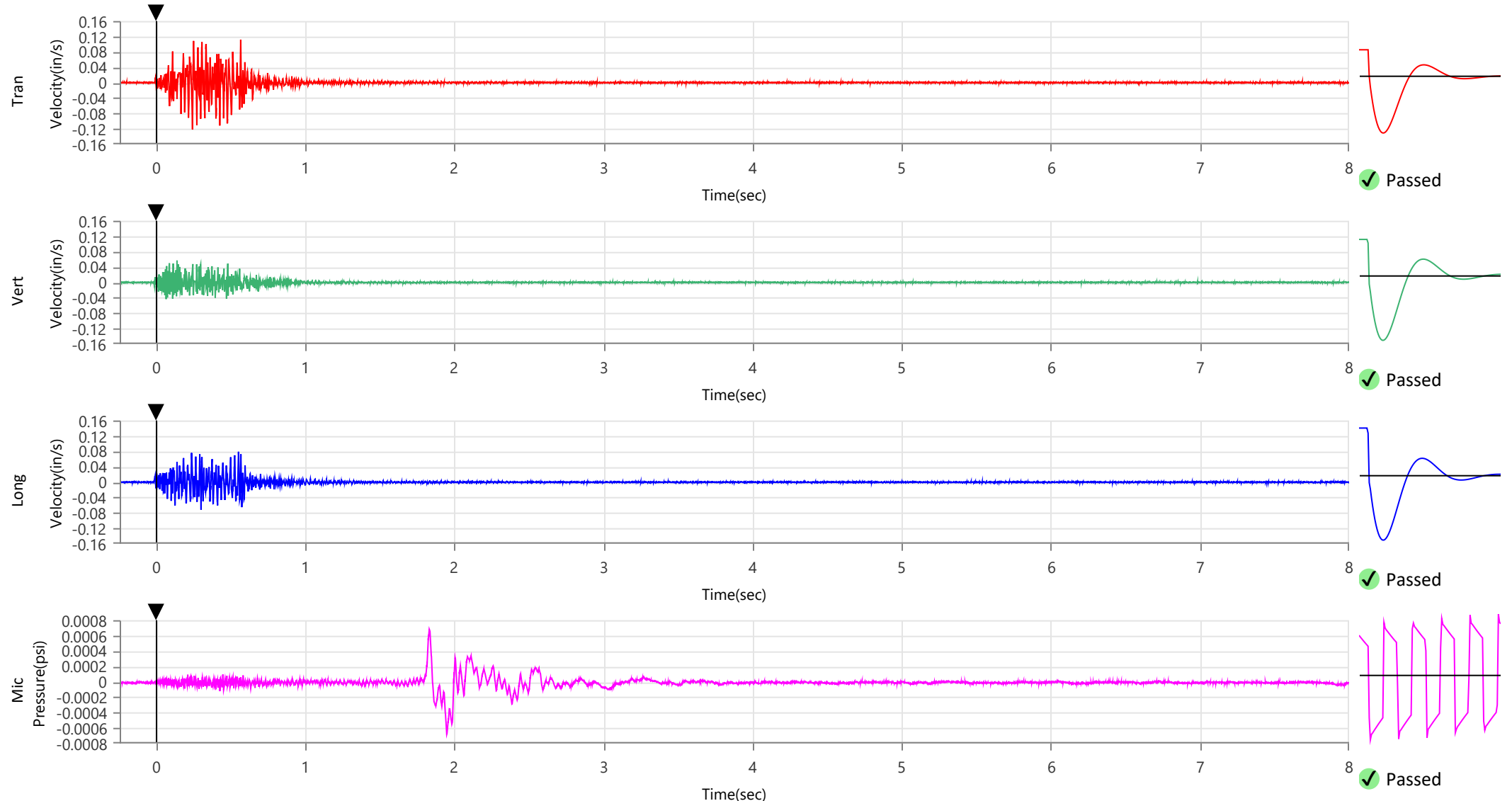
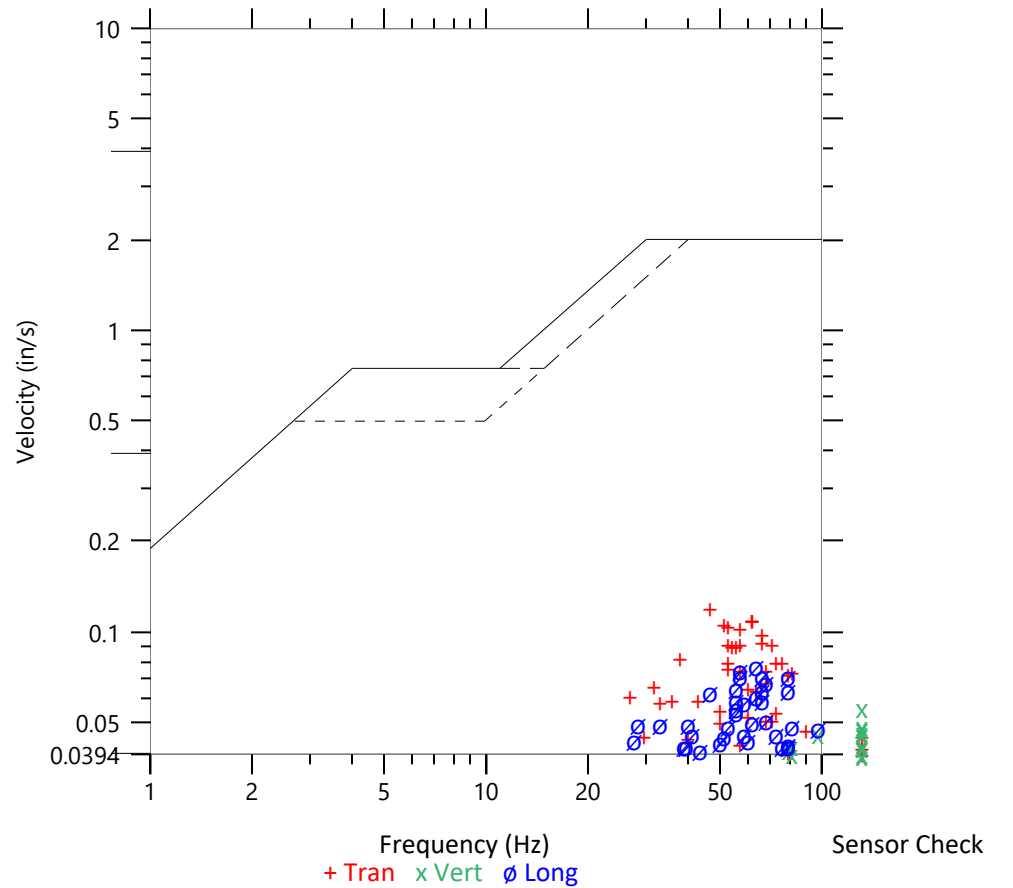
	Tran	Vert	Long
Peak Particle Velocity	0.1213 in/s	0.0568 in/s	0.0788 in/s
Zero Crossing Frequency	46.5 Hz	>100 Hz	64.0 Hz
Time (Relative to Trigger)	0.242 sec	0.139 sec	0.551 sec
Peak Acceleration	0.118 g	0.112 g	0.092 g
Peak Displacement	0.000 in	0.000 in	0.000 in
Sensor Check	✓ Passed	✓ Passed	✓ Passed
Frequency	7.1 Hz	7.3 Hz	7.5 Hz
Overswing Ratio	4.9	3.8	3.6

Peak Vector Sum 0.1307 in/s at 0.567 sec

**ISEE Linear Microphone**

Peak Sound Pressure Level 0.000682 psi  
 Peak Sound Pressure Level 107.4 dB(L)  
 Time (Relative to Trigger) 1.831 sec  
 Zero Crossing Frequency 7.9 Hz  
 Sensor Check ✓ Passed  
 Frequency 20.5 Hz  
 Test Amplitude 1544 mv

**USBM R18507 And OSMRE**  
 Velocity versus Frequency (Zero Crossing)



**Waveform Trigger Source**  
**Trigger Level(s)**  
**Trigger Level (Mic)**  
**Pre-Trigger/Record Time**  
**Sample Rate**  
**Setup File Name**  
**Operator**

Tran at March 26, 2024 11:03:02  
 Geo 0.0200 in/s  
 Mic 0.01029 psi, 131 dB(L)  
 0.25 sec/8.0 sec (Fixed)  
 4096 sps  
 Spicewood Hwy 71 - Station 4.mmb  
 Operator

**Serial Number**  
**Model Number**  
**Battery Level**  
**Unit Calibration**  
**Event File Name**  
**USB Sensor Support**

UM7490  
 Micromate ISEE 10.90GC  
 3.8 volts  
 February 23, 2023 by Instantel  
 UM7490\_20240326110302.IDFW  
 Disabled

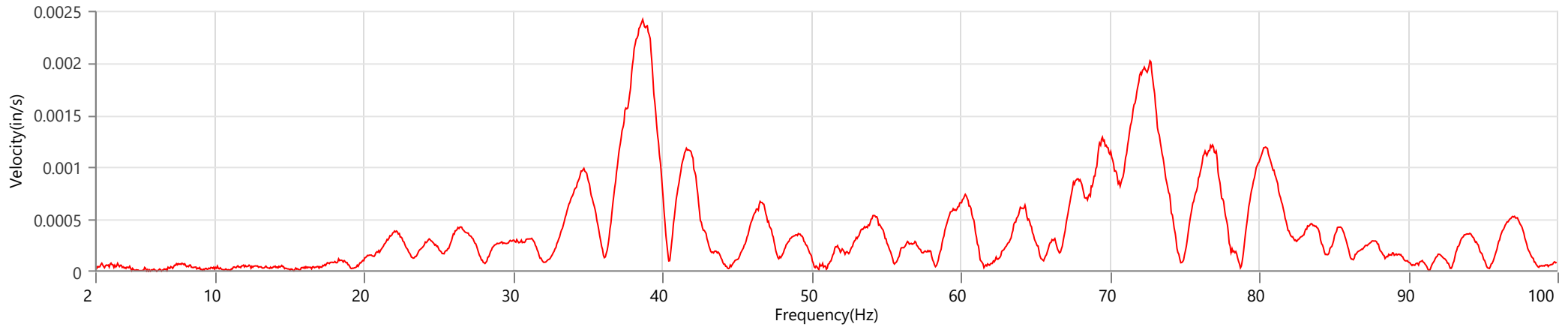
**Notes**

Location Station 4  
 Client Spicewood Crushed Stone  
 Company Hwy 71 Quarry  
 General Notes IGS, Inc.

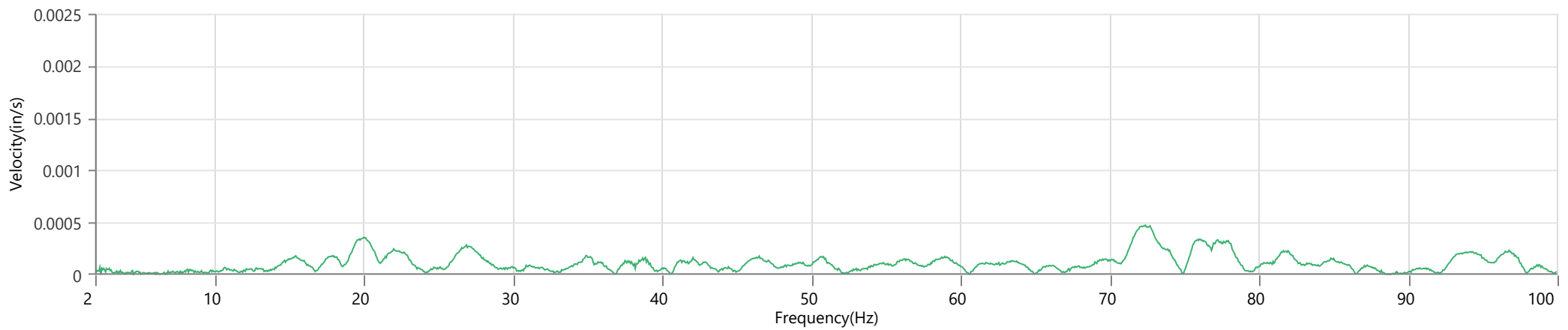
**Extended Note** N30.49821 W98.21578

**Post Event Notes** No text to be displayed.

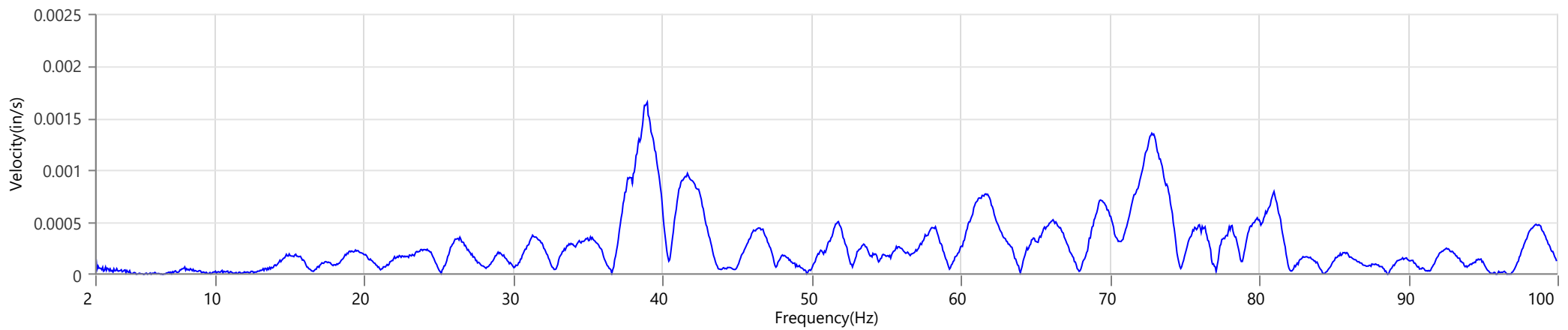
**Tran - Dominant Frequency 38.7 Hz, Amplitude 0.0024 in/s (Peak Particle Velocity: 0.1213 in/s)**



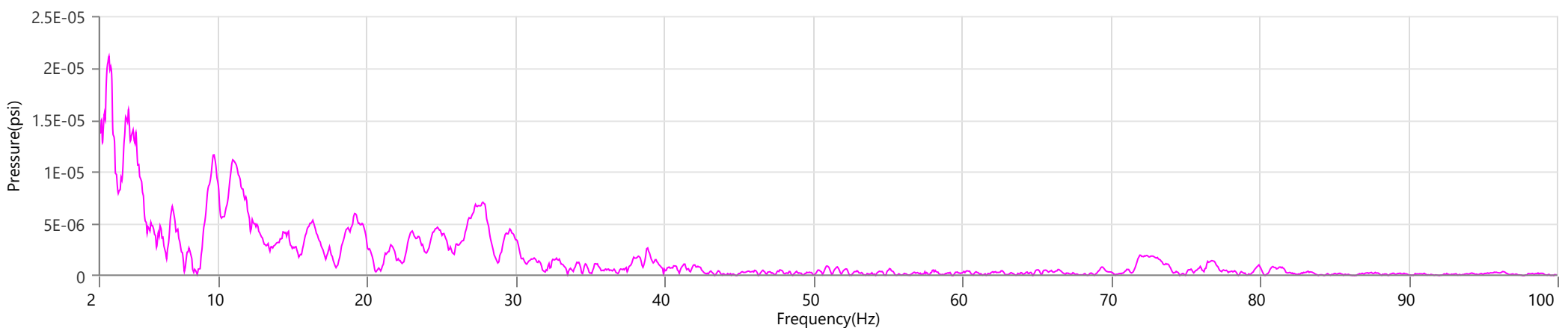
**Vert - Dominant Frequency 72.4 Hz, Amplitude 0.0005 in/s (Peak Particle Velocity: 0.0568 in/s)**



**Long - Dominant Frequency 39.0 Hz, Amplitude 0.0017 in/s (Peak Particle Velocity: 0.0788 in/s)**



**Mic - Dominant Frequency 2.7 Hz, Amplitude 0.00002 psi (Peak Sound Pressure Level: 0.000682 psi)**





**Waveform Trigger Source**  
**Trigger Level(s)**  
**Trigger Level (Mic)**  
**Pre-Trigger/Record Time**  
**Sample Rate**  
**Setup File Name**  
**Operator**

Tran at March 26, 2024 11:03:02  
 Geo 0.0200 in/s  
 Mic 0.01029 psi, 131 dB(L)  
 0.50 sec/8.0 sec (Fixed)  
 4096 sps  
 Spicewood Hwy 71 - Station 5.mmb  
 Operator

**Serial Number**  
**Model Number**  
**Battery Level**  
**Unit Calibration**  
**Event File Name**  
**USB Sensor Support**

UM7409  
 Micromate ISEE 10.90GC  
 3.8 volts  
 June 27, 2023 by Instantel  
 UM7409\_20240326110302.IDFW  
 Disabled

**Notes**

Location Station 5  
 Client Spicewood Crushed Stone  
 Company Hwy 71 Quarry  
 General Notes IGS, Inc.

**Extended Note** N30.49911 W98.21538

**Post Event Notes** No text to be displayed.

**Geophone**

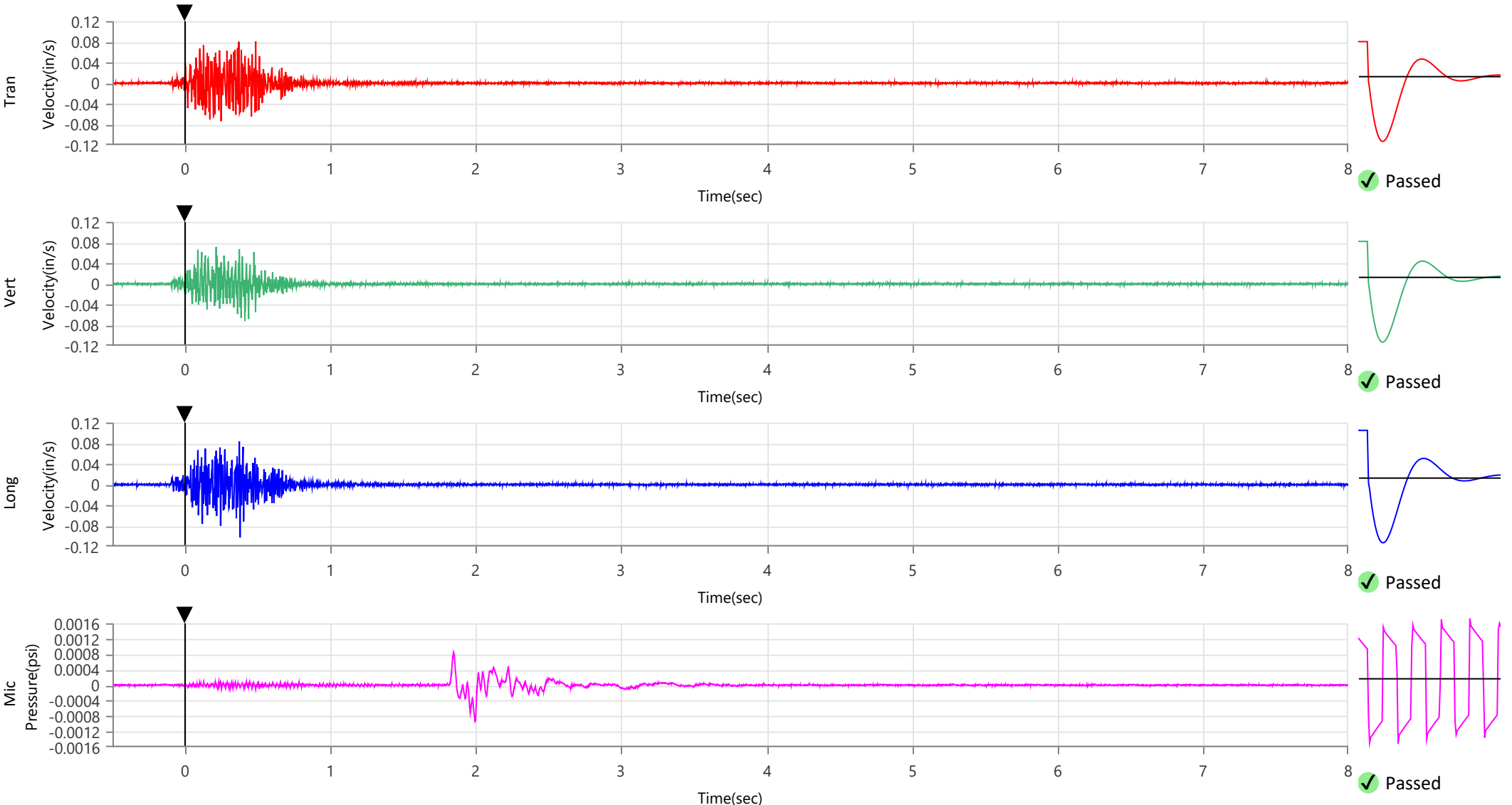
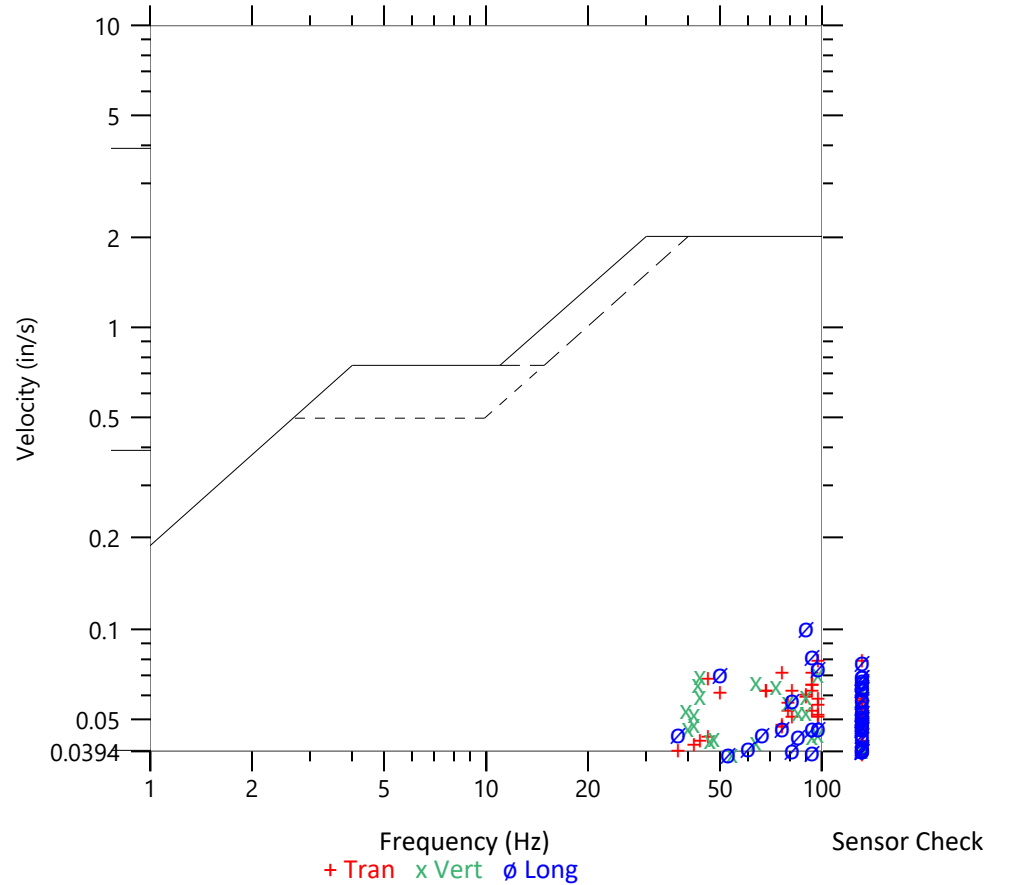
	Tran	Vert	Long
Peak Particle Velocity	0.0807 in/s	0.0723 in/s	0.1027 in/s
Zero Crossing Frequency	97.5 Hz	97.5 Hz	89.0 Hz
Time (Relative to Trigger)	0.486 sec	0.411 sec	0.378 sec
Peak Acceleration	0.132 g	0.118 g	0.171 g
Peak Displacement	0.000 in	0.000 in	0.000 in
Sensor Check	✓ Passed	✓ Passed	✓ Passed
Frequency	7.5 Hz	7.3 Hz	7.3 Hz
Overswing Ratio	3.6	3.9	3.2

Peak Vector Sum 0.1159 in/s at 0.373 sec

**ISEE Linear Microphone**

Peak Sound Pressure Level 0.000936 psi  
 Peak Sound Pressure Level 110.2 dB(L)  
 Time (Relative to Trigger) 1.995 sec  
 Zero Crossing Frequency 8.0 Hz  
 Sensor Check ✓ Passed  
 Frequency 19.7 Hz  
 Test Amplitude 1542 mv

**USBM R18507 And OSMRE**  
 Velocity versus Frequency (Zero Crossing)



**Waveform Trigger Source**  
**Trigger Level(s)**  
**Trigger Level (Mic)**  
**Pre-Trigger/Record Time**  
**Sample Rate**  
**Setup File Name**  
**Operator**

Tran at March 26, 2024 11:03:02  
 Geo 0.0200 in/s  
 Mic 0.01029 psi, 131 dB(L)  
 0.50 sec/8.0 sec (Fixed)  
 4096 sps  
 Spicewood Hwy 71 - Station 5.mmb  
 Operator

**Serial Number**  
**Model Number**  
**Battery Level**  
**Unit Calibration**  
**Event File Name**  
**USB Sensor Support**

UM7409  
 Micromate ISEE 10.90GC  
 3.8 volts  
 June 27, 2023 by Instantel  
 UM7409\_20240326110302.IDFW  
 Disabled

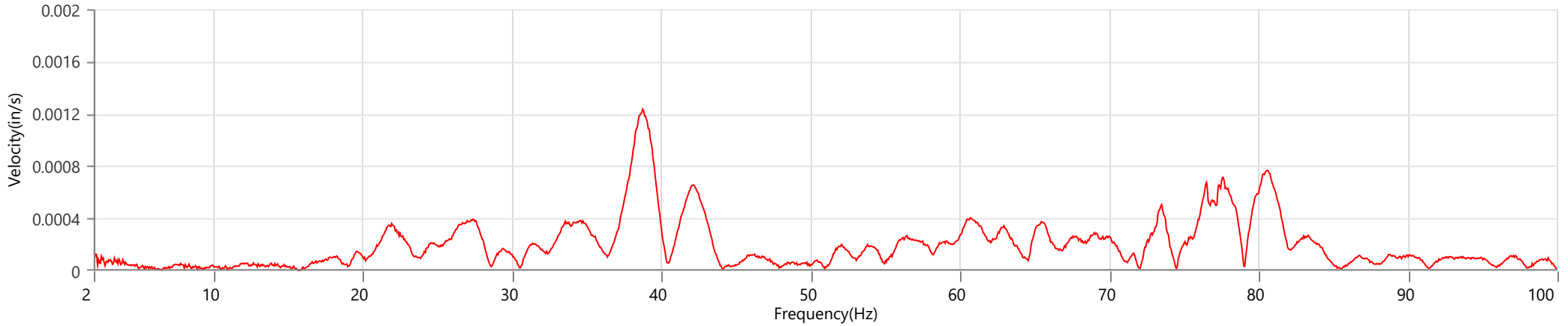
**Notes**

Location Station 5  
 Client Spicewood Crushed Stone  
 Company Hwy 71 Quarry  
 General Notes IGS, Inc.

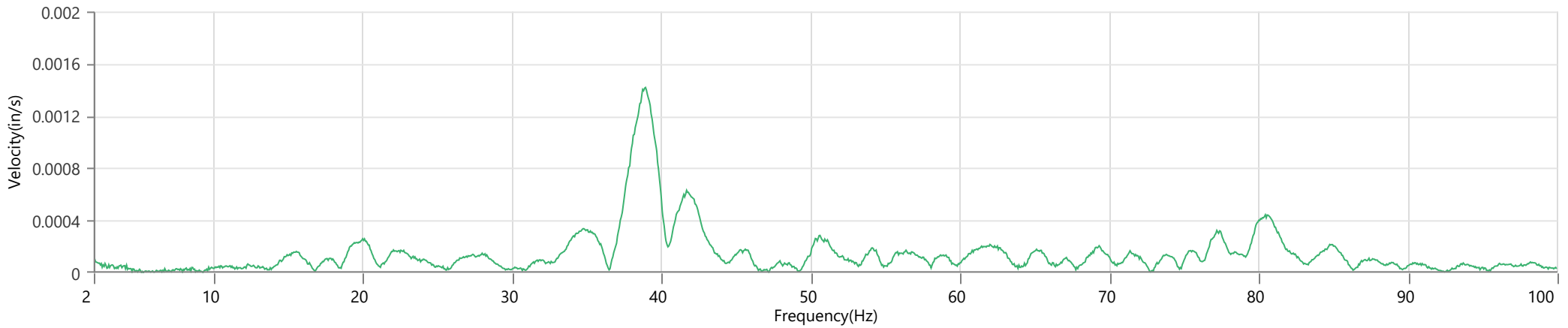
**Extended Note** N30.49911 W98.21538

**Post Event Notes** No text to be displayed.

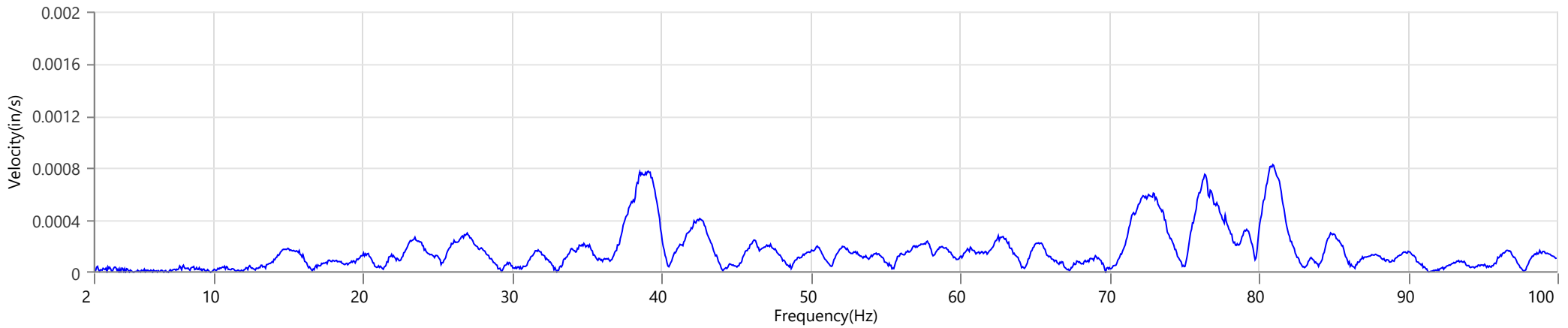
**Tran - Dominant Frequency 38.8 Hz, Amplitude 0.0012 in/s (Peak Particle Velocity: 0.0807 in/s)**



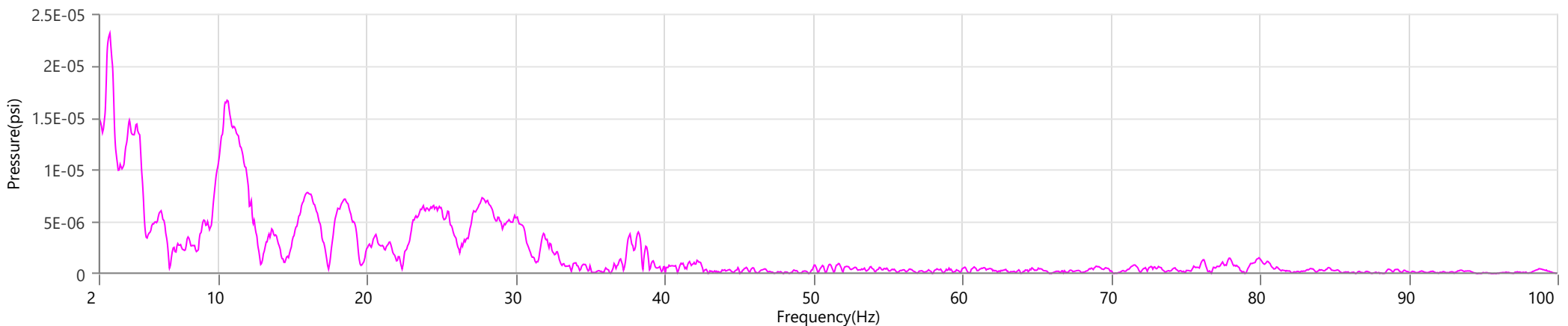
**Vert - Dominant Frequency 38.9 Hz, Amplitude 0.0014 in/s (Peak Particle Velocity: 0.0723 in/s)**



**Long - Dominant Frequency 80.9 Hz, Amplitude 0.0008 in/s (Peak Particle Velocity: 0.1027 in/s)**



**Mic - Dominant Frequency 2.8 Hz, Amplitude 0.00002 psi (Peak Sound Pressure Level: 0.000936 psi)**



**Waveform Trigger Source**  
**Trigger Level(s)**  
**Trigger Level (Mic)**  
**Pre-Trigger/Record Time**  
**Sample Rate**  
**Setup File Name**  
**Operator**

Long at March 26, 2024 11:03:01  
 Geo 0.0200 in/s  
 Mic 0.01029 psi, 131 dB(L)  
 0.50 sec/8.0 sec (Fixed)  
 4096 sps  
 Spicewood Hwy 71 - Station 6.mmb  
 Operator

**Serial Number**  
**Model Number**  
**Battery Level**  
**Unit Calibration**  
**Event File Name**  
**USB Sensor Support**

UM7284  
 Micromate ISEE 10.90GC  
 3.8 volts  
 June 26, 2023 by Instantel  
 UM7284\_20240326110301.IDFW  
 Disabled

**Notes**

Location Station 6  
 Client Spicewood Crushed Stone  
 Company Hwy 71 Quarry  
 General Notes IGS, Inc.

**Extended Note** N30.495113 W98.206539

**Post Event Notes** No text to be displayed.

**Geophone**

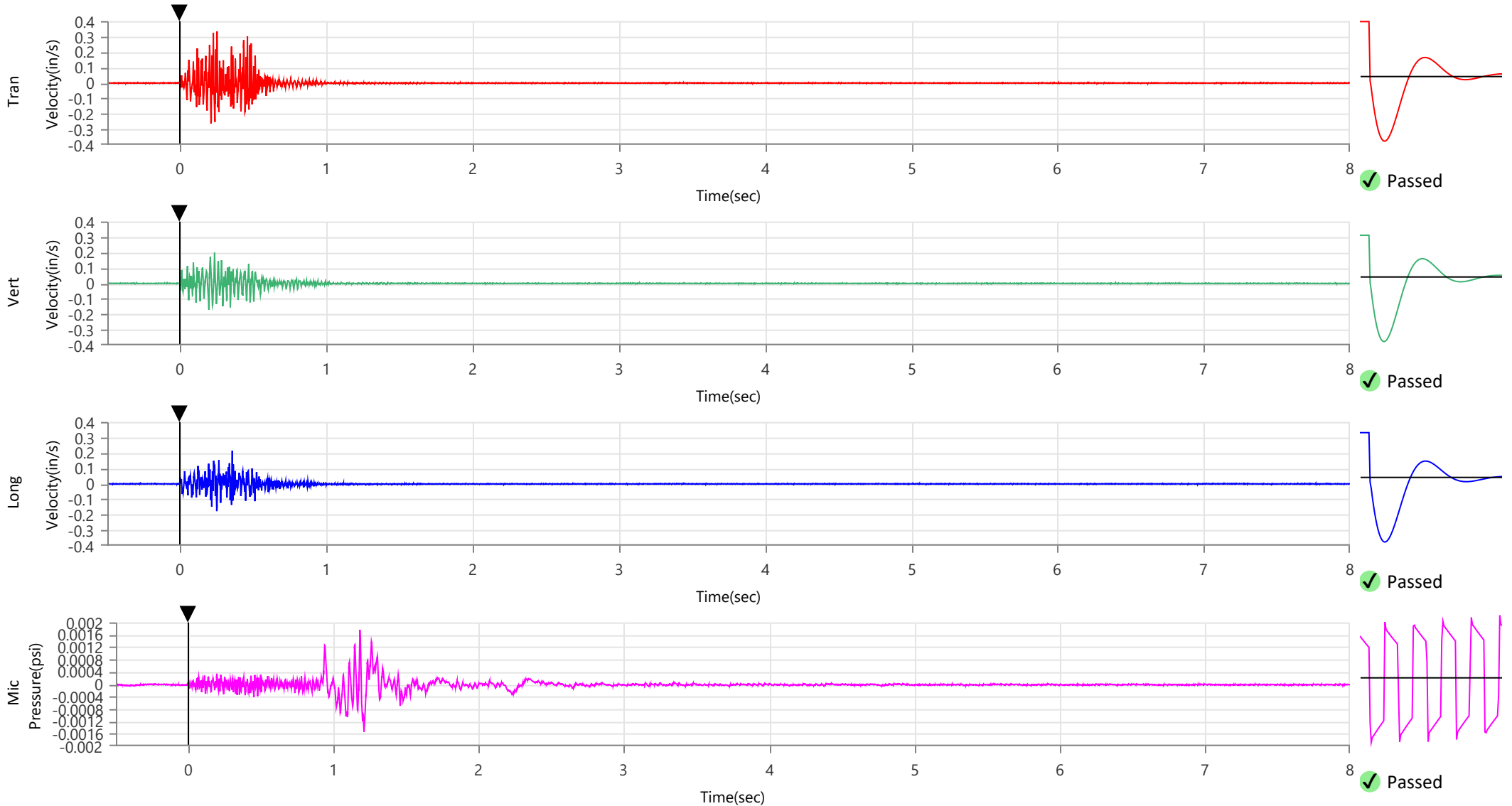
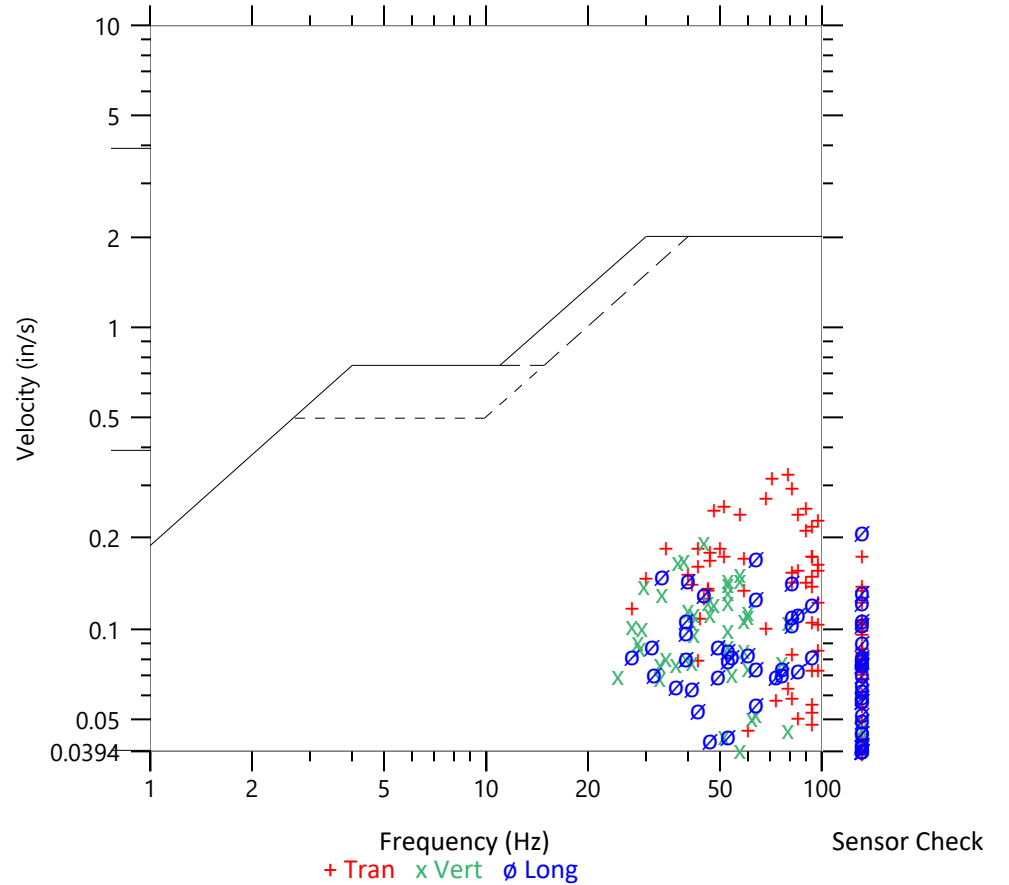
	<b>Tran</b>	<b>Vert</b>	<b>Long</b>
Peak Particle Velocity	0.3327 in/s	0.1983 in/s	0.2147 in/s
Zero Crossing Frequency	78.8 Hz	44.5 Hz	>100 Hz
Time (Relative to Trigger)	0.251 sec	0.234 sec	0.354 sec
Peak Acceleration	0.405 g	0.188 g	0.332 g
Peak Displacement	0.001 in	0.001 in	0.001 in
Sensor Check	✓ Passed	✓ Passed	✓ Passed
Frequency	7.3 Hz	7.5 Hz	7.1 Hz
Overswing Ratio	3.3	3.5	3.9

Peak Vector Sum 0.3543 in/s at 0.251 sec

**ISEE Linear Microphone**

Peak Sound Pressure Level 0.001762 psi  
 Peak Sound Pressure Level 115.7 dB(L)  
 Time (Relative to Trigger) 1.181 sec  
 Zero Crossing Frequency 31.0 Hz  
 Sensor Check ✓ Passed  
 Frequency 20.5 Hz  
 Test Amplitude 1574 mv

**USBM R18507 And OSMRE**  
 Velocity versus Frequency (Zero Crossing)



**Waveform Trigger Source**  
**Trigger Level(s)**  
**Trigger Level (Mic)**  
**Pre-Trigger/Record Time**  
**Sample Rate**  
**Setup File Name**  
**Operator**

Long at March 26, 2024 11:03:01  
 Geo 0.0200 in/s  
 Mic 0.01029 psi, 131 dB(L)  
 0.50 sec/8.0 sec (Fixed)  
 4096 sps  
 Spicewood Hwy 71 - Station 6.mmb  
 Operator

**Serial Number**  
**Model Number**  
**Battery Level**  
**Unit Calibration**  
**Event File Name**  
**USB Sensor Support**

UM7284  
 Micromate ISEE 10.90GC  
 3.8 volts  
 June 26, 2023 by Instantel  
 UM7284\_20240326110301.IDFW  
 Disabled

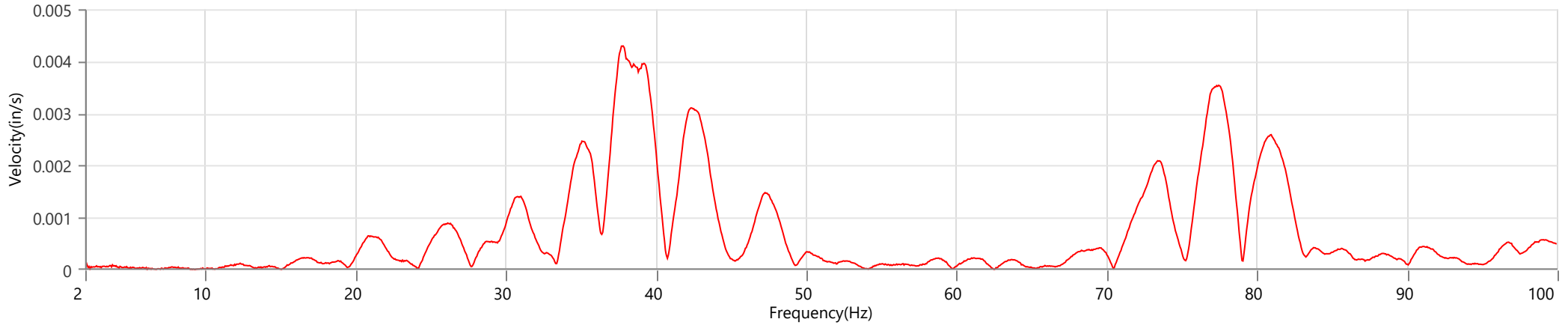
**Notes**

Location Station 6  
 Client Spicewood Crushed Stone  
 Company Hwy 71 Quarry  
 General Notes IGS, Inc.

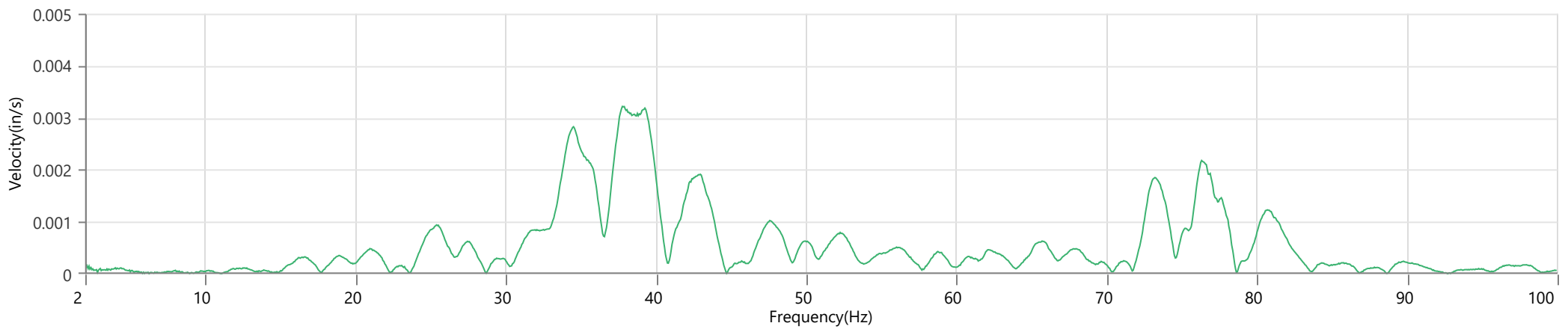
**Extended Note** N30.495113 W98.206539

**Post Event Notes** No text to be displayed.

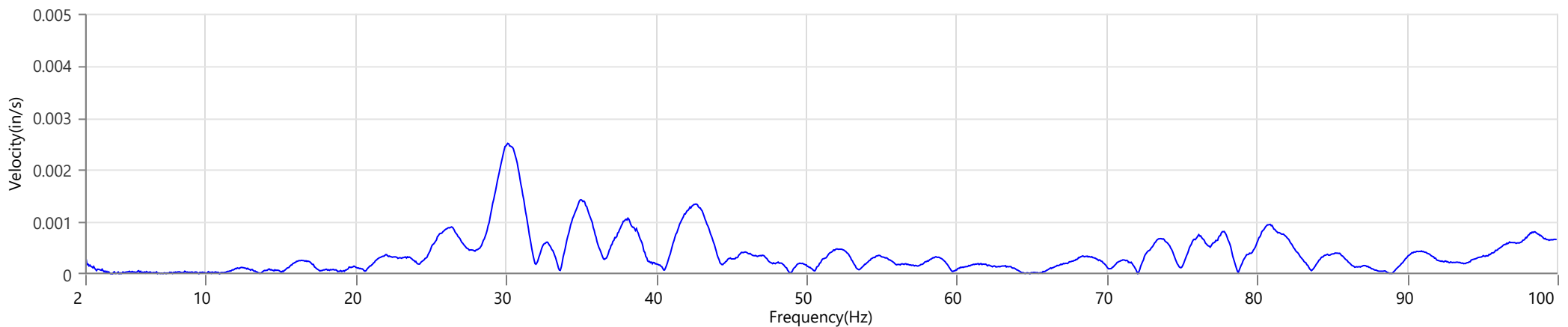
**Tran - Dominant Frequency 37.8 Hz, Amplitude 0.0043 in/s (Peak Particle Velocity: 0.3327 in/s)**



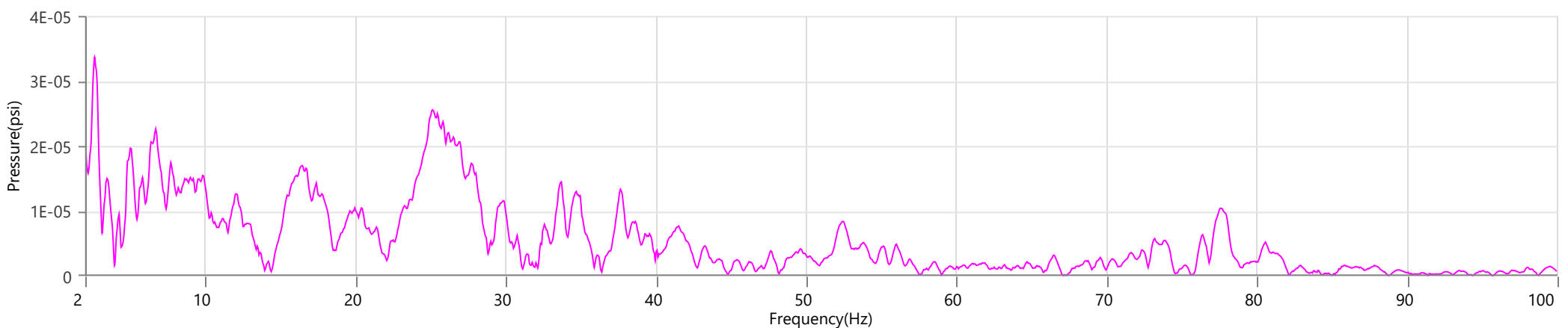
**Vert - Dominant Frequency 37.8 Hz, Amplitude 0.0032 in/s (Peak Particle Velocity: 0.1983 in/s)**



**Long - Dominant Frequency 30.1 Hz, Amplitude 0.0025 in/s (Peak Particle Velocity: 0.2147 in/s)**



**Mic - Dominant Frequency 2.6 Hz, Amplitude 0.00003 psi (Peak Sound Pressure Level: 0.001762 psi)**



**Start** March 26, 2024 00:00:05  
**Finish** March 26, 2024 23:29:59  
**Number of Intervals/Interval** 1409.91/60 sec  
**Sample Rate** 4096 sps  
**Setup File Name** Spicewood Hwy 71 - Noise 2.mmb  
**Operator** Operator

**Serial Number** UM11630  
**Model Number** Micromate ISEE 10.90GC  
**Battery Level** 3.8 volts  
**Unit Calibration** June 19, 2023 by Instantel  
**Microphone Calibration** UA10154, March 2, 2023 by Instantel  
**Event File Name** UM11630\_20240326000005.IDFH  
**USB Sensor Support** Disabled

**Notes**  
**Location** Noise 2  
**Client** Spicewood Crushed Stone  
**Company** Hwy 71 Quarry  
**General Notes** IGS, Inc.

**Extended Note** Station 5N30.49911 W98.21538

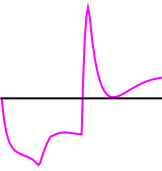
**Post Event Notes** No text to be displayed.

**Sound Level Microphone**

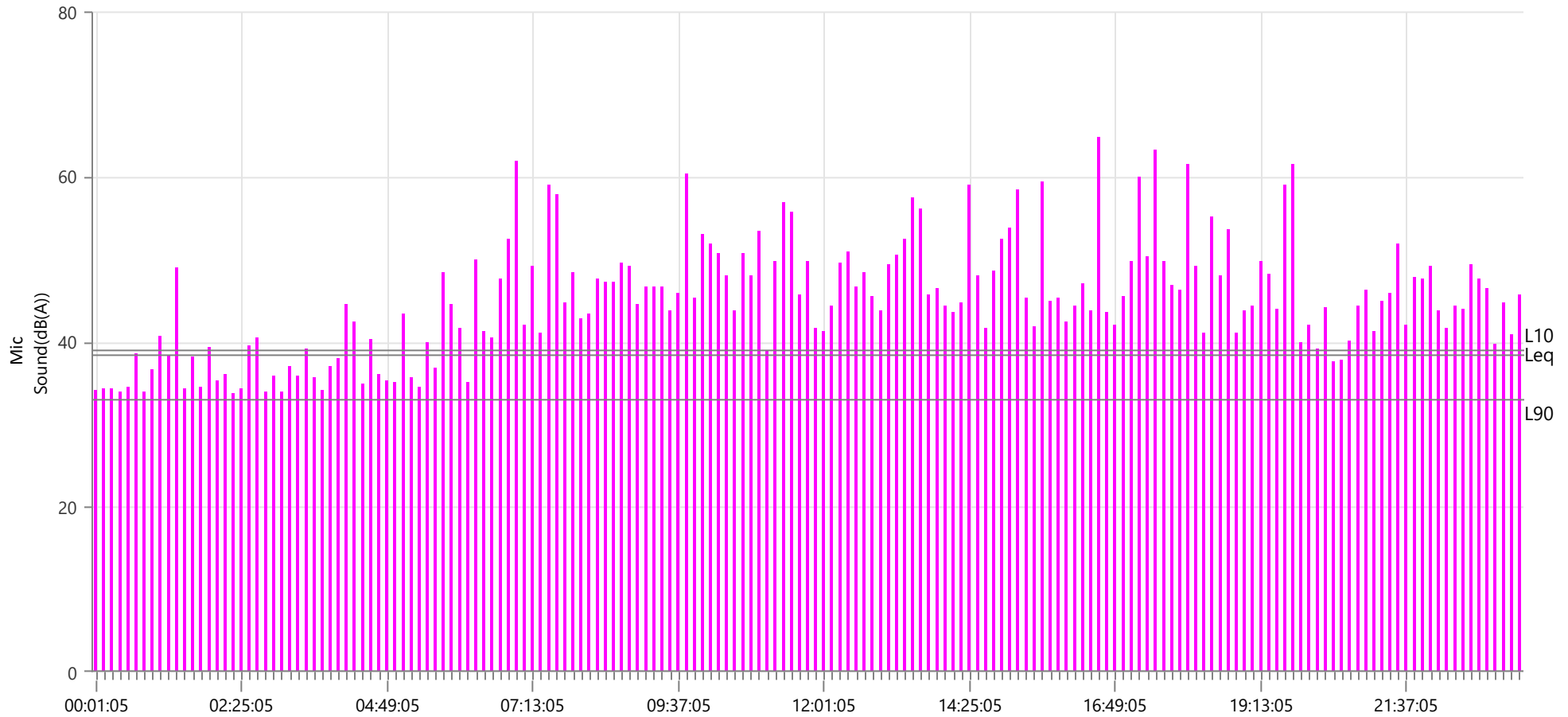
**LMax** 64.7 dB(A)  
**Date** Mar 26, 2024  
**Time** 16:36:05

	<b>LMin</b>	<b>L10</b>	<b>L90</b>	<b>Leq</b>
Sound(dB(A))	32.0	39	33	38.3
Sensor Check	✓ Passed			
Test Amplitude	1100 mv			

Sensor Check



✓ Passed



**Start** March 26, 2024 00:00:05  
**Finish** March 26, 2024 23:29:59  
**Number of Intervals/Interval** 1409.91/60 sec  
**Sample Rate** 4096 sps  
**Setup File Name** Spicewood Hwy 71 - Noise 3.mmb  
**Operator** Operator

**Serial Number** UM11574  
**Model Number** Micromate ISEE 10.90GC  
**Battery Level** 3.8 volts  
**Unit Calibration** June 28, 2023 by Instantel  
**Microphone Calibration** UA10761, July 29, 2022 by Instantel  
**Event File Name** UM11574\_20240326000005.IDFH  
**USB Sensor Support** Disabled

**Notes**  
**Location** Noise 3  
**Client** Spicewood Crushed Stone  
**Company** Hwy 71 Quarry  
**General Notes** IGS, Inc.

**Extended Note** N30.490958 W98.213495

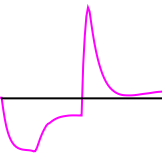
**Post Event Notes** No text to be displayed.

**Sound Level Microphone**

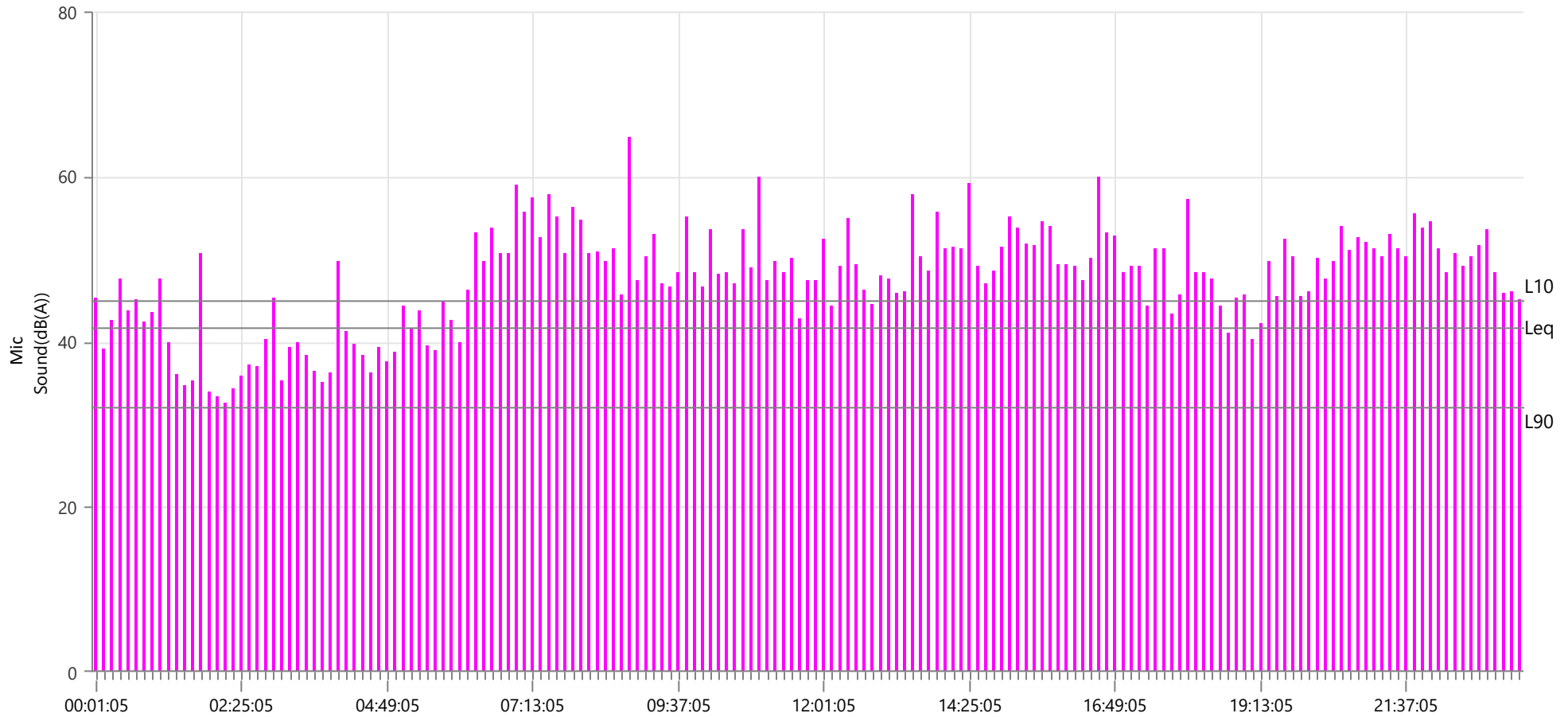
**LMax** 64.7 dB(A)  
**Date** Mar 26, 2024  
**Time** 08:55:05

	<b>LMin</b>	<b>L10</b>	<b>L90</b>	<b>Leq</b>
Sound(dB(A))	30.4	45	32	41.5
Sensor Check	✓ Passed			
Test Amplitude	1120 mv			

**Sensor Check**



✓ Passed

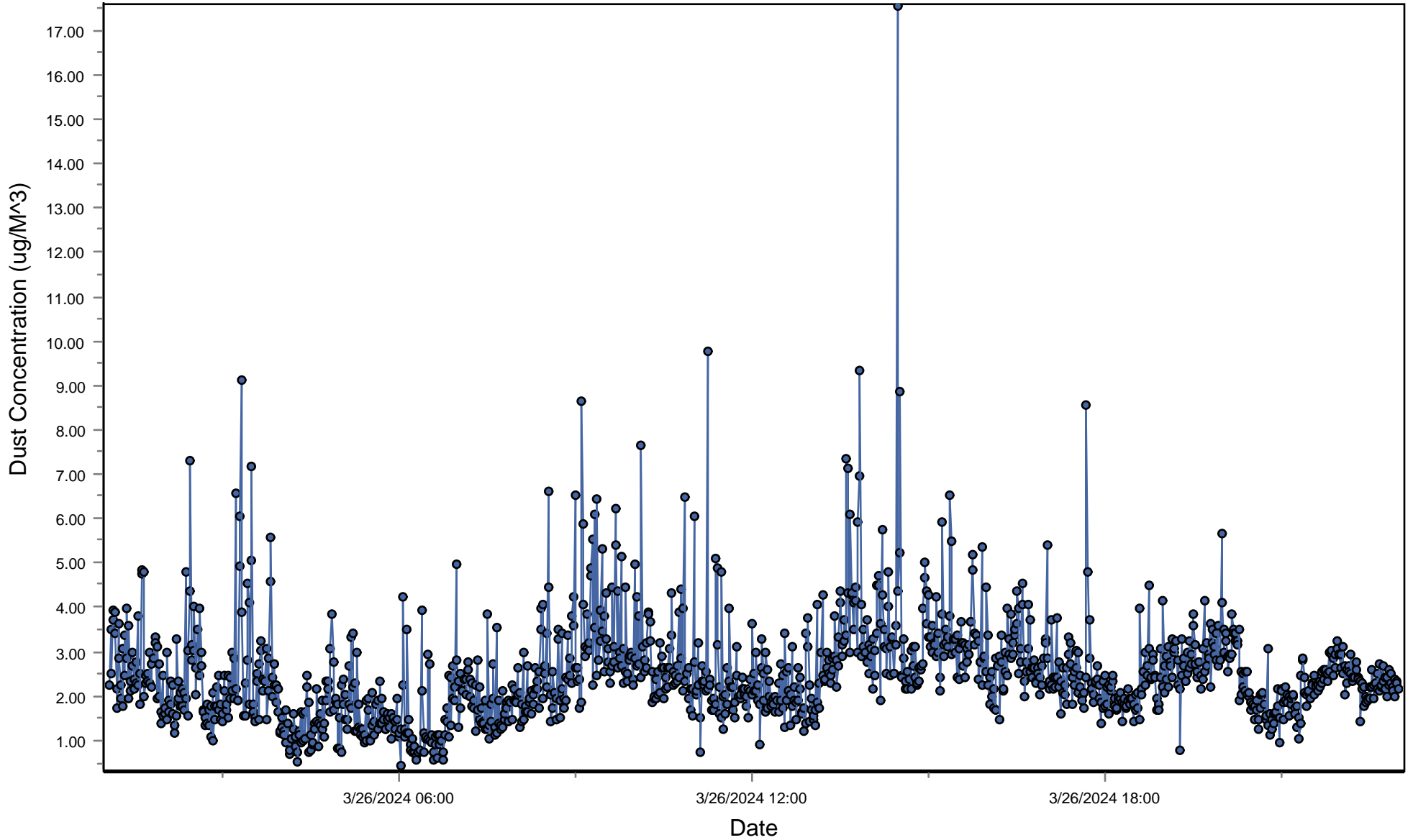




# Spicewood Crushed Stone - Hwy 71 Quarry

## South Dust Monitor

● D100@AvgPartL



# Spicewood Crushed Stone - Hwy 71 Quarry

## North Dust Monitor

● D100@AvgPartL

