

Waveform Trigger Source
Trigger Level(s)
Trigger Level (Mic)
Pre-Trigger/Record Time
Sample Rate
Setup File Name
Operator

Long at April 28, 2026 10:43:40
 Geo 0.0200 in/s
 Mic 0.01029 psi, 131 dB(L)
 0.50 sec/8.0 sec (Fixed)
 4096 sps
 Spicewood Hwy 71 - Station 1.mmb
 Operator

Serial Number
Model Number
Battery Level
Unit Calibration
Event File Name
USB Sensor Support

UM20084
 Micromate ISEE 11.0CB
 3.8 volts
 December 31, 2025 by Instantel
 UM20084_20260428104340.IDFW
 Disabled

Notes

Location Station 1
 Client Spicewood Crushed Stone
 Company Hwy 71 Quarry
 General Notes IGS, Inc.

Extended Note N30.49572 W98.21577

Post Event Notes No text to be displayed.

Geophone

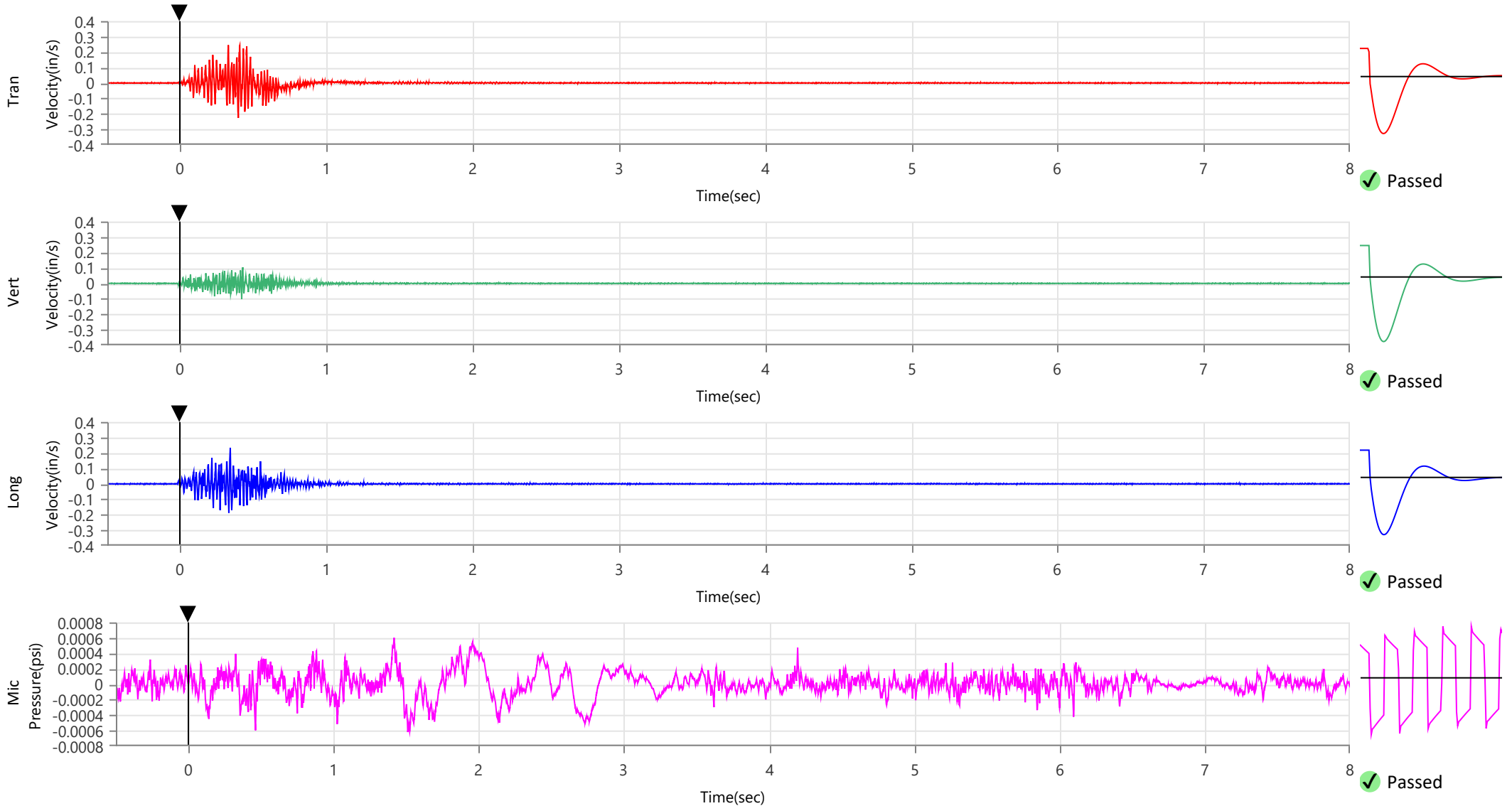
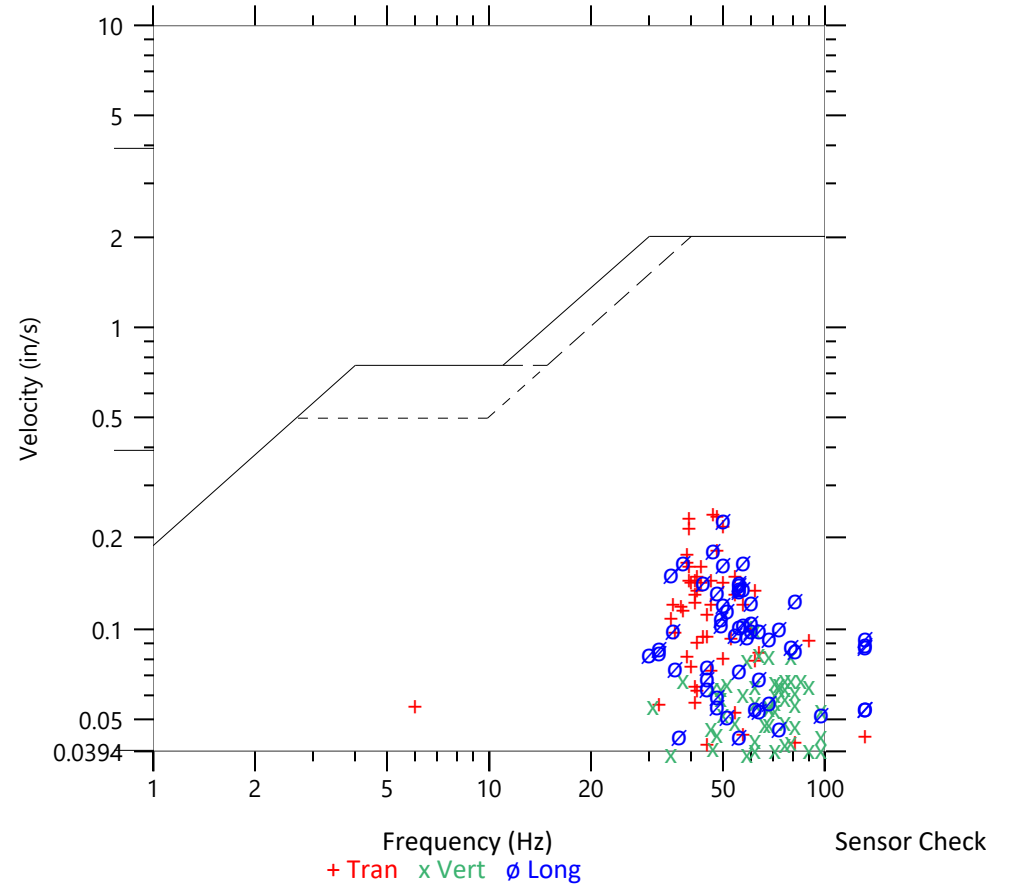
	Tran	Vert	Long
Peak Particle Velocity	0.2445 in/s	0.1040 in/s	0.2334 in/s
Zero Crossing Frequency	46.5 Hz	58.5 Hz	50.0 Hz
Time (Relative to Trigger)	0.329 sec	0.427 sec	0.341 sec
Peak Acceleration	0.224 g	0.135 g	0.211 g
Peak Displacement	0.001 in	0.000 in	0.001 in
Sensor Check	✓ Passed	✓ Passed	✓ Passed
Frequency	7.5 Hz	7.3 Hz	7.1 Hz
Overswing Ratio	4.4	4.9	5.0

Peak Vector Sum 0.2817 in/s at 0.331 sec

ISEE Linear Microphone

Peak Sound Pressure Level 0.000619 psi
 Peak Sound Pressure Level 106.6 dB(L)
 Time (Relative to Trigger) 1.511 sec
 Zero Crossing Frequency 4.7 Hz
 Sensor Check ✓ Passed
 Frequency 19.7 Hz
 Test Amplitude 1266 mv

USBM R18507 And OSMRE
 Velocity versus Frequency (Zero Crossing)



Waveform Trigger Source
Trigger Level(s)
Trigger Level (Mic)
Pre-Trigger/Record Time
Sample Rate
Setup File Name
Operator

Long at April 28, 2026 10:43:40
 Geo 0.0200 in/s
 Mic 0.01029 psi, 131 dB(L)
 0.50 sec/8.0 sec (Fixed)
 4096 sps
 Spicewood Hwy 71 - Station 1.mmb
 Operator

Serial Number
Model Number
Battery Level
Unit Calibration
Event File Name
USB Sensor Support

UM20084
 Micromate ISEE 11.0CB
 3.8 volts
 December 31, 2025 by Instantel
 UM20084_20260428104340.IDFW
 Disabled

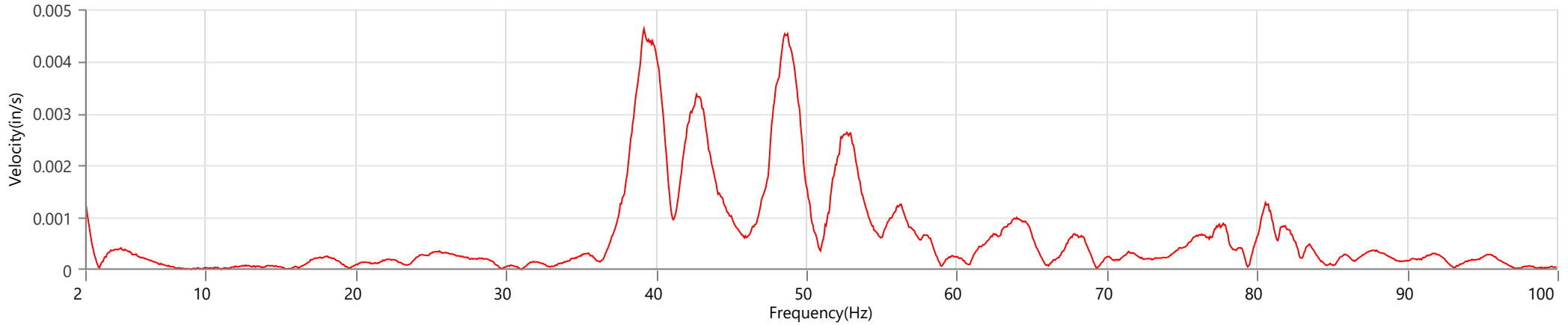
Notes

Location Station 1
 Client Spicewood Crushed Stone
 Company Hwy 71 Quarry
 General Notes IGS, Inc.

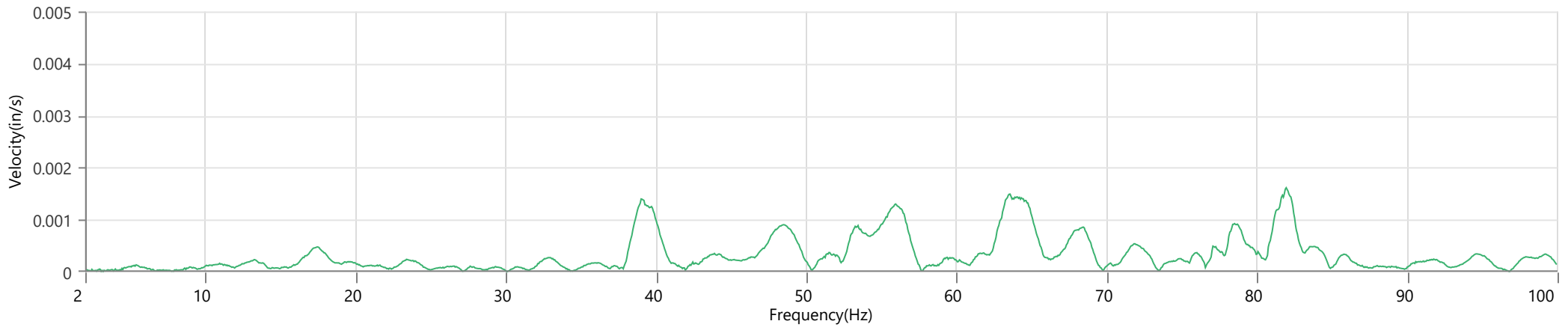
Extended Note N30.49572 W98.21577

Post Event Notes No text to be displayed.

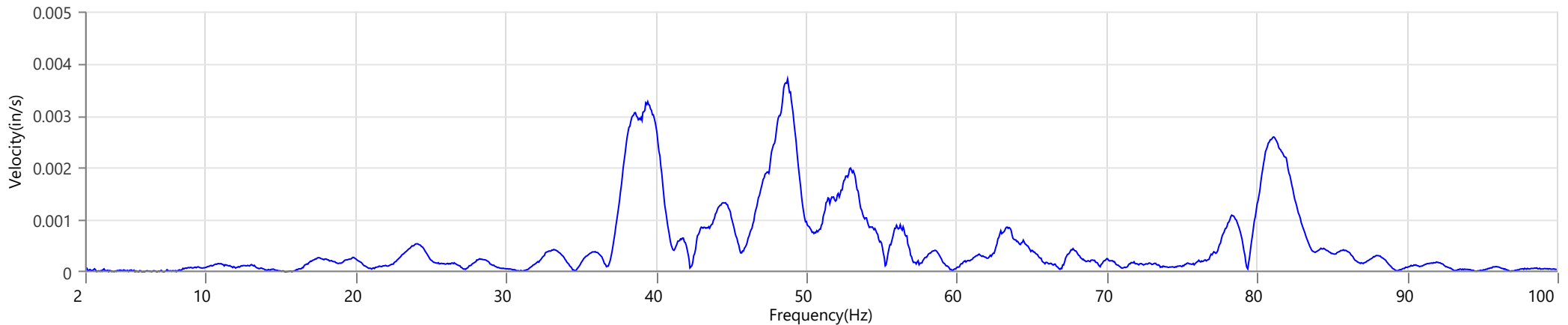
Tran - Dominant Frequency 39.2 Hz, Amplitude 0.0046 in/s (Peak Particle Velocity: 0.2445 in/s)



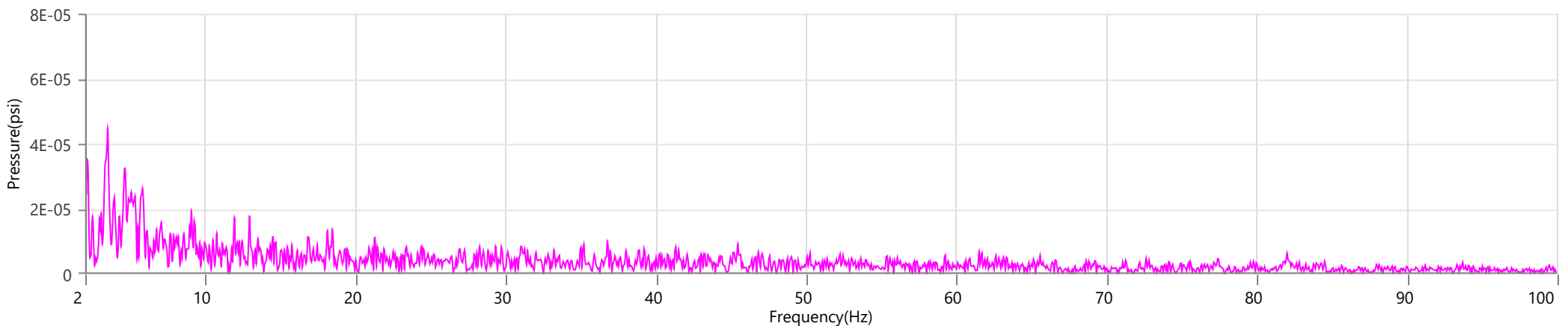
Vert - Dominant Frequency 81.9 Hz, Amplitude 0.0016 in/s (Peak Particle Velocity: 0.1040 in/s)



Long - Dominant Frequency 48.8 Hz, Amplitude 0.0037 in/s (Peak Particle Velocity: 0.2334 in/s)



Mic - Dominant Frequency 2.0 Hz, Amplitude 0.00005 psi (Peak Sound Pressure Level: 0.000619 psi)



Waveform Trigger Source
Trigger Level(s)
Trigger Level (Mic)
Pre-Trigger/Record Time
Sample Rate
Setup File Name
Operator

Long at April 28, 2026 10:43:39
 Geo 0.0200 in/s
 Mic 0.01029 psi, 131 dB(L)
 0.50 sec/8.0 sec (Fixed)
 4096 sps
 Spicewood Hwy 71 - Station 2.mmb
 Operator

Serial Number
Model Number
Battery Level
Unit Calibration
Event File Name
USB Sensor Support

UM22230
 Micromate ISEE 11.0CB
 3.8 volts
 December 13, 2025 by Instantel
 UM22230_20260428104339.IDFW
 Disabled

Notes

Location Station 2
 Client Spicewood Crushed Stone
 Company Hwy 71
 General Notes IGS, Inc

Extended Note N30.49650 W-98.21572

Post Event Notes No text to be displayed.

Geophone

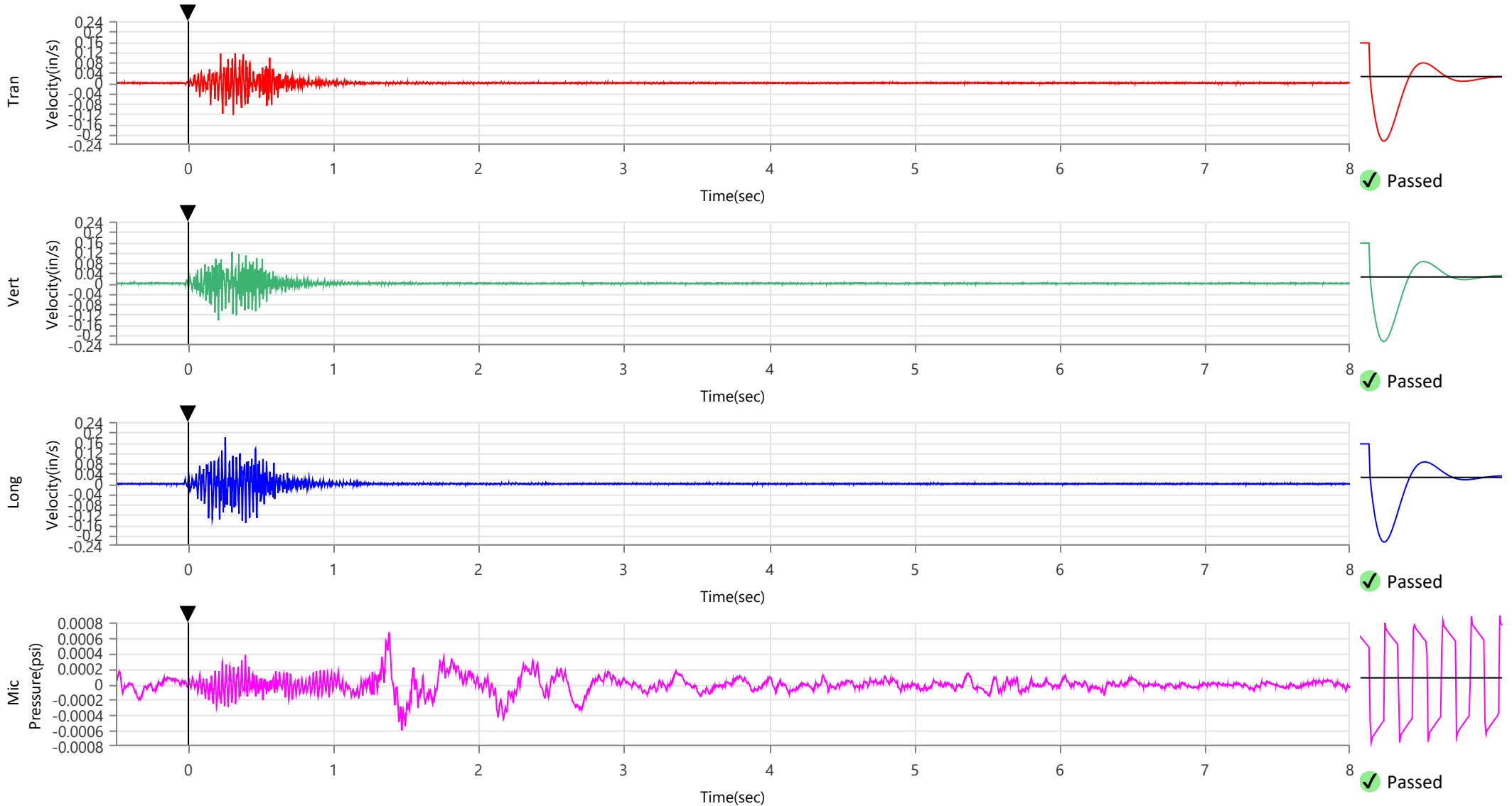
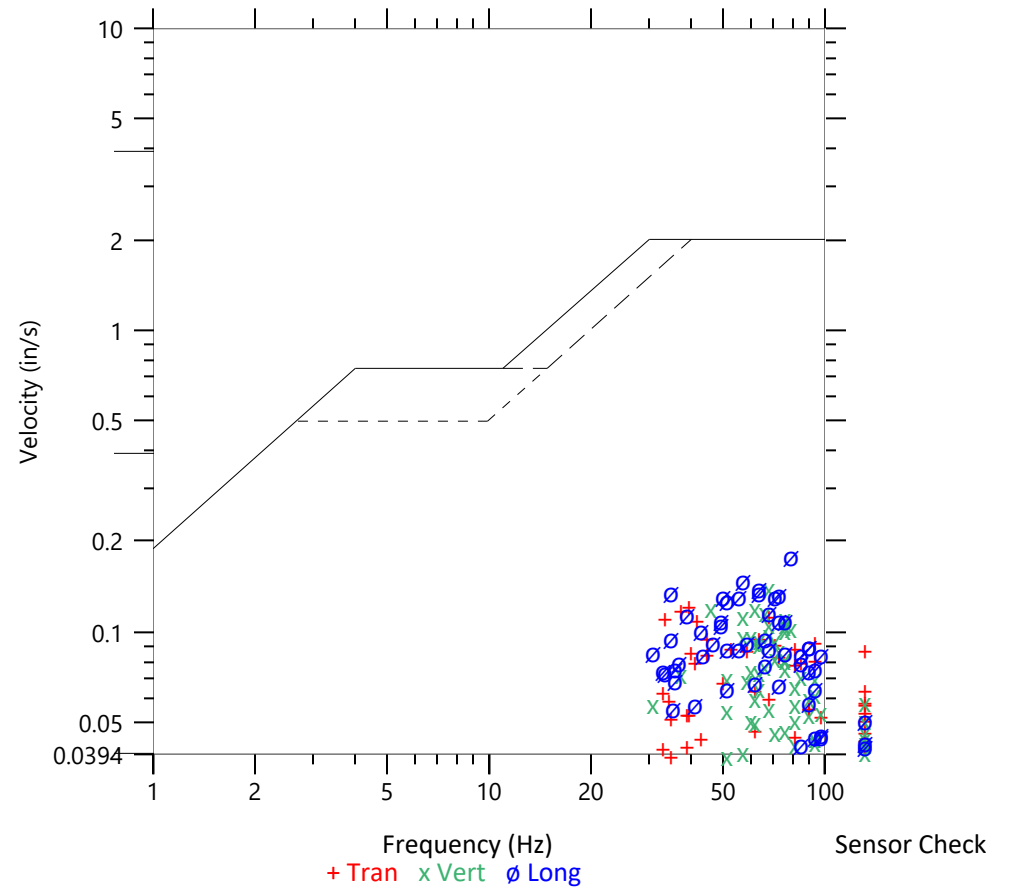
	Tran	Vert	Long
Peak Particle Velocity	0.1244 in/s	0.1427 in/s	0.1800 in/s
Zero Crossing Frequency	39.4 Hz	68.3 Hz	78.8 Hz
Time (Relative to Trigger)	0.308 sec	0.207 sec	0.254 sec
Peak Acceleration	0.181 g	0.178 g	0.220 g
Peak Displacement	0.000 in	0.000 in	0.000 in
Sensor Check	✓ Passed	✓ Passed	✓ Passed
Frequency	7.3 Hz	7.3 Hz	7.3 Hz
Overswing Ratio	4.7	4.1	4.1

Peak Vector Sum 0.1961 in/s at 0.396 sec

ISEE Linear Microphone

Peak Sound Pressure Level 0.000664 psi
 Peak Sound Pressure Level 107.2 dB(L)
 Time (Relative to Trigger) 1.382 sec
 Zero Crossing Frequency 4.8 Hz
 Sensor Check ✓ Passed
 Frequency 20.5 Hz
 Test Amplitude 1252 mv

USBM RI8507 And OSMRE
 Velocity versus Frequency (Zero Crossing)



Waveform Trigger Source
Trigger Level(s)
Trigger Level (Mic)
Pre-Trigger/Record Time
Sample Rate
Setup File Name
Operator

Long at April 28, 2026 10:43:39
 Geo 0.0200 in/s
 Mic 0.01029 psi, 131 dB(L)
 0.50 sec/8.0 sec (Fixed)
 4096 sps
 Spicewood Hwy 71 - Station 2.mmb
 Operator

Serial Number
Model Number
Battery Level
Unit Calibration
Event File Name
USB Sensor Support

UM22230
 Micromate ISEE 11.0CB
 3.8 volts
 December 13, 2025 by Instantel
 UM22230_20260428104339.IDFW
 Disabled

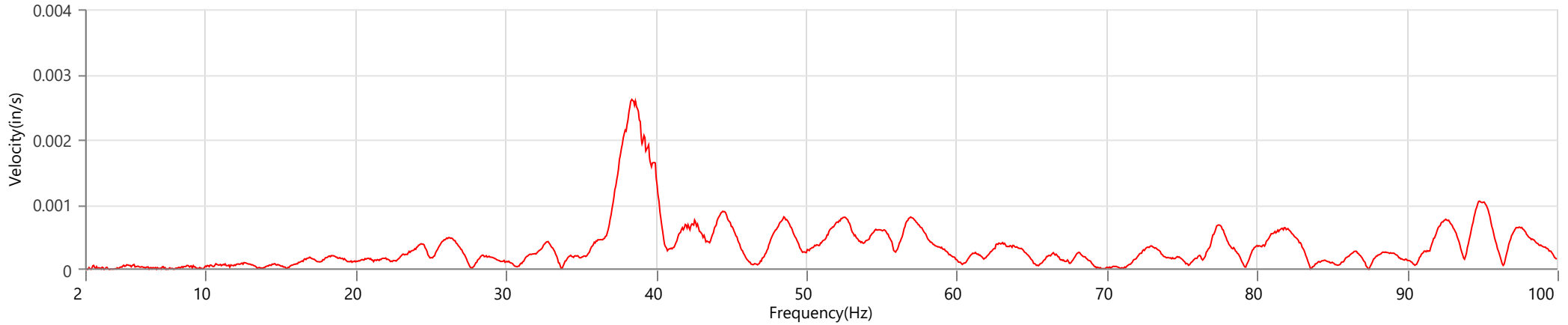
Notes

Location Station 2
 Client Spicewood Crushed Stone
 Company Hwy 71
 General Notes IGS, Inc

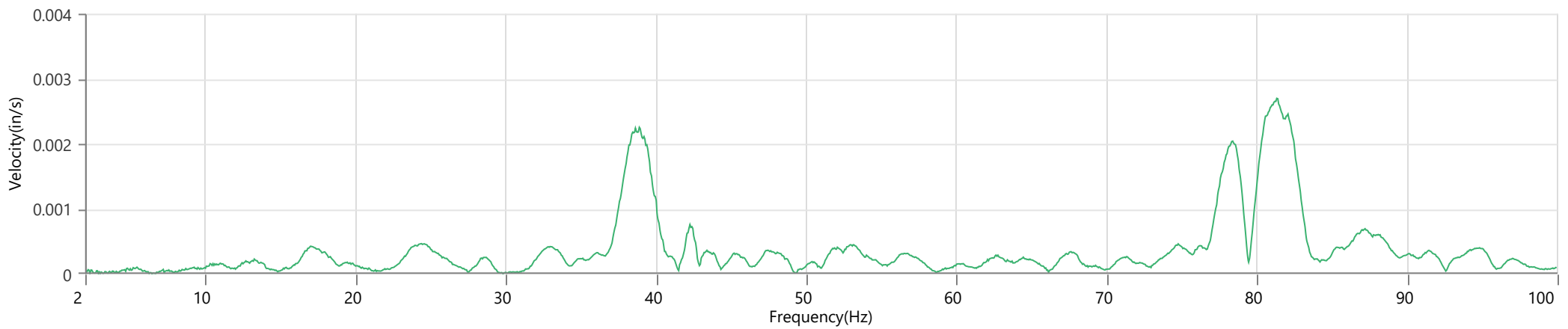
Extended Note N30.49650 W-98.21572

Post Event Notes No text to be displayed.

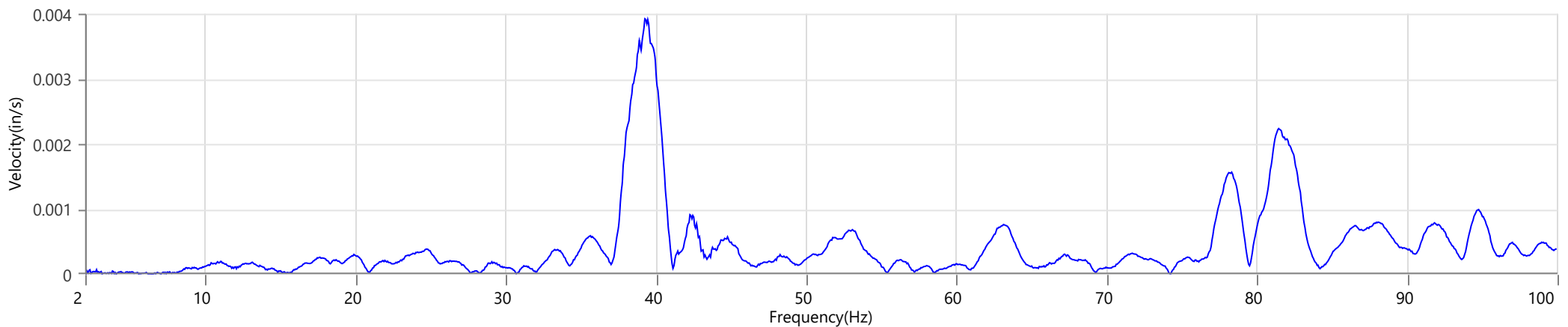
Tran - Dominant Frequency 38.4 Hz, Amplitude 0.0026 in/s (Peak Particle Velocity: 0.1244 in/s)



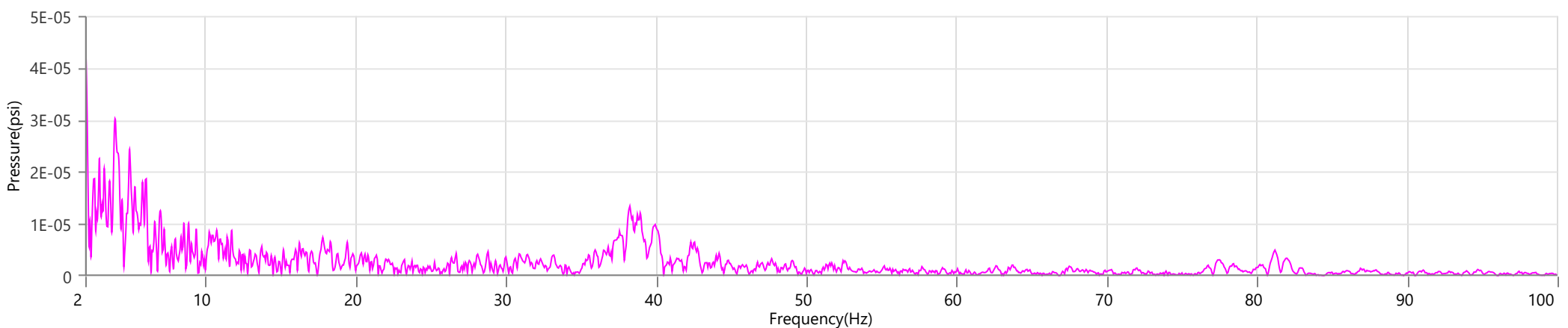
Vert - Dominant Frequency 81.3 Hz, Amplitude 0.0027 in/s (Peak Particle Velocity: 0.1427 in/s)



Long - Dominant Frequency 39.2 Hz, Amplitude 0.0039 in/s (Peak Particle Velocity: 0.1800 in/s)



Mic - Dominant Frequency 2.0 Hz, Amplitude 0.00004 psi (Peak Sound Pressure Level: 0.000664 psi)



Waveform Trigger Source
Trigger Level(s)
Trigger Level (Mic)
Pre-Trigger/Record Time
Sample Rate
Setup File Name
Operator

Long at April 28, 2026 10:43:39
 Geo 0.0200 in/s
 Mic 0.01029 psi, 131 dB(L)
 0.50 sec/8.0 sec (Fixed)
 4096 sps
 Spicewood Hwy 71 - Station 3.mmb
 Operator

Serial Number
Model Number
Battery Level
Unit Calibration
Event File Name
USB Sensor Support

UM6512
 Micromate ISEE 11.0CB
 3.8 volts
 December 20, 2025 by Instantel
 UM6512_20260428104339.IDFW
 Disabled

Notes

Location Station 3
 Client Spicewood Crushed Stone
 Company Hwy 71 Quarry
 General Notes IGS, Inc.

Extended Note N30.49742 W98.21566

Post Event Notes No text to be displayed.

Geophone

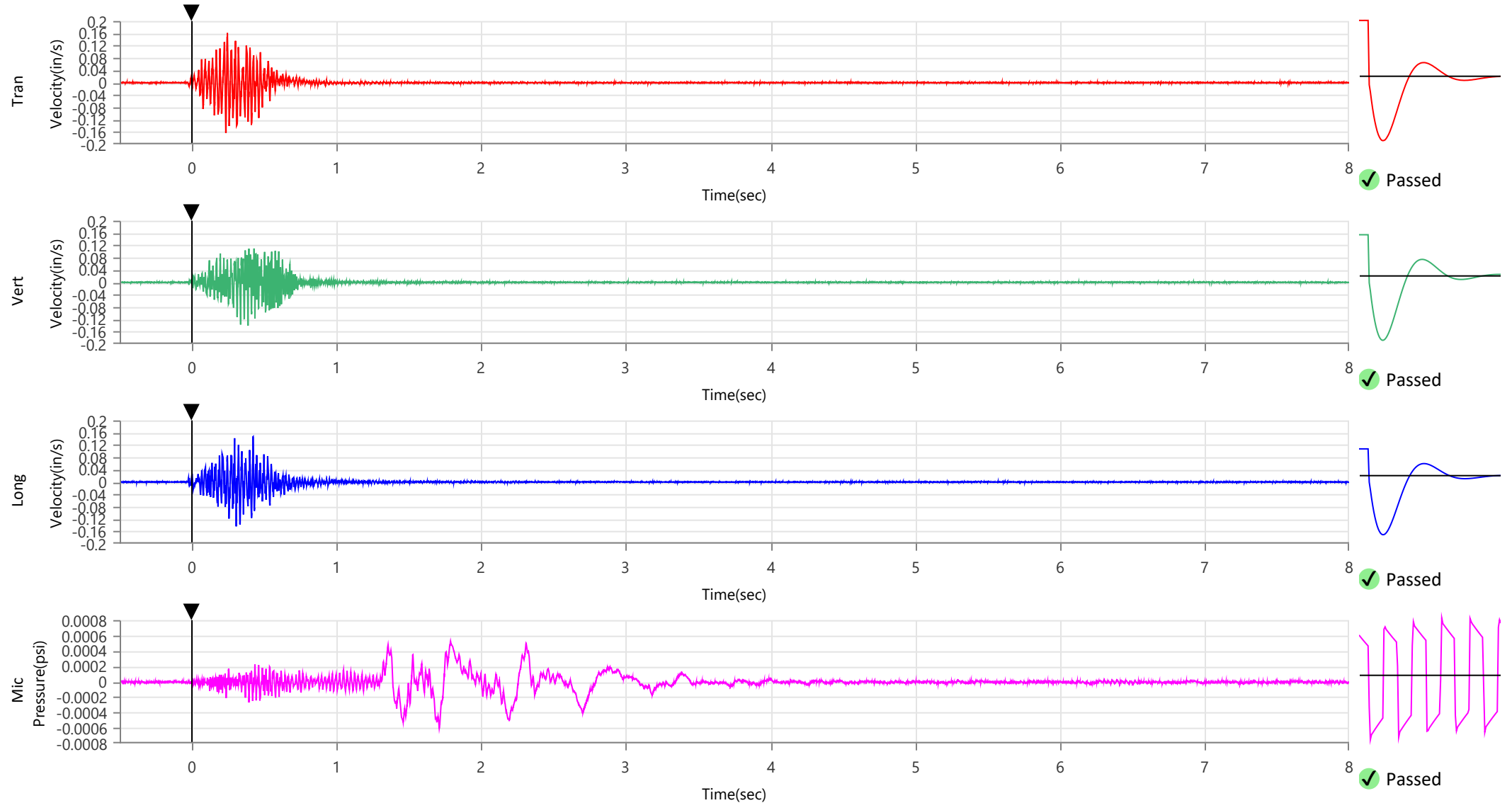
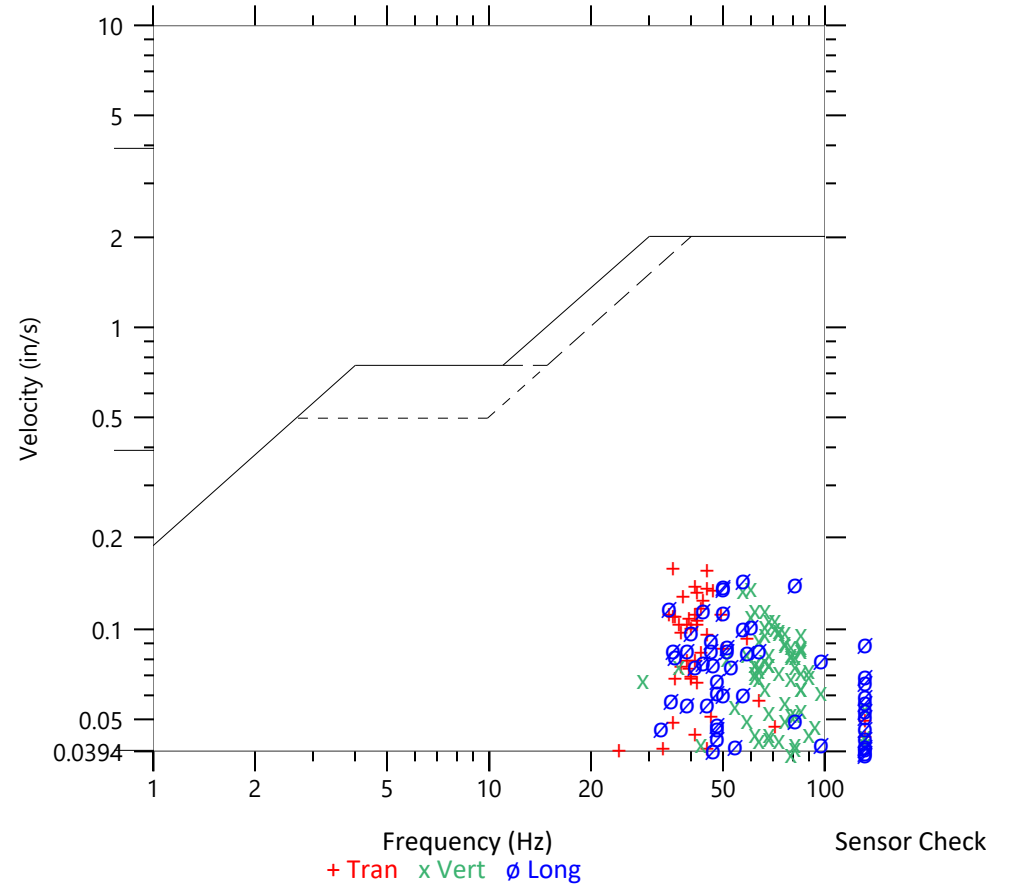
	Tran	Vert	Long
Peak Particle Velocity	0.1626 in/s	0.1406 in/s	0.1474 in/s
Zero Crossing Frequency	35.3 Hz	60.2 Hz	56.9 Hz
Time (Relative to Trigger)	0.235 sec	0.388 sec	0.423 sec
Peak Acceleration	0.207 g	0.178 g	0.211 g
Peak Displacement	0.001 in	0.000 in	0.000 in
Sensor Check	✓ Passed	✓ Passed	✓ Passed
Frequency	7.1 Hz	7.5 Hz	7.1 Hz
Overswing Ratio	4.7	3.8	4.9

Peak Vector Sum 0.2052 in/s at 0.412 sec

ISEE Linear Microphone

Peak Sound Pressure Level 0.000605 psi
 Peak Sound Pressure Level 106.4 dB(L)
 Time (Relative to Trigger) 1.710 sec
 Zero Crossing Frequency 5.4 Hz
 Sensor Check ✓ Passed
 Frequency 19.7 Hz
 Test Amplitude 1466 mv

USBM RI8507 And OSMRE
 Velocity versus Frequency (Zero Crossing)



Waveform Trigger Source
Trigger Level(s)
Trigger Level (Mic)
Pre-Trigger/Record Time
Sample Rate
Setup File Name
Operator

Long at April 28, 2026 10:43:39
 Geo 0.0200 in/s
 Mic 0.01029 psi, 131 dB(L)
 0.50 sec/8.0 sec (Fixed)
 4096 sps
 Spicewood Hwy 71 - Station 3.mmb
 Operator

Serial Number
Model Number
Battery Level
Unit Calibration
Event File Name
USB Sensor Support

UM6512
 Micromate ISEE 11.0CB
 3.8 volts
 December 20, 2025 by Instantel
 UM6512_20260428104339.IDFW
 Disabled

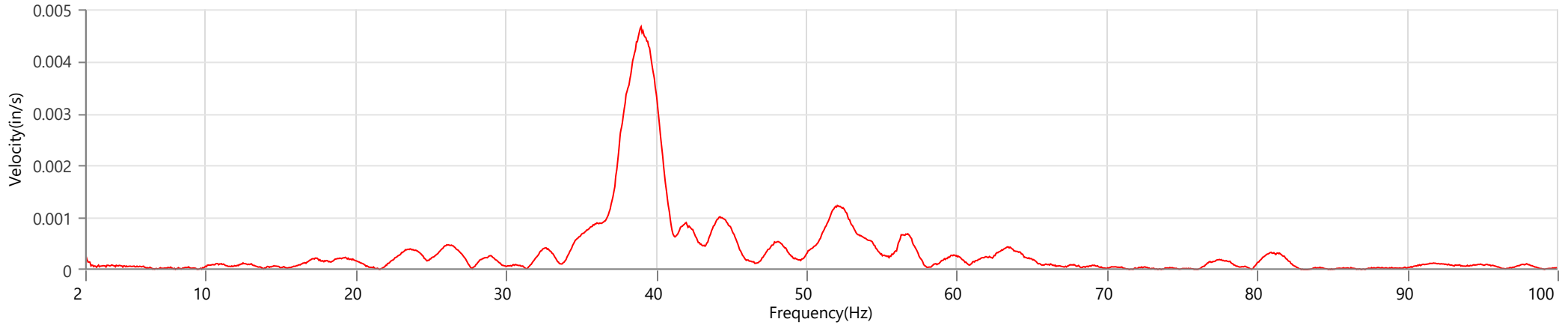
Notes

Location Station 3
 Client Spicewood Crushed Stone
 Company Hwy 71 Quarry
 General Notes IGS, Inc.

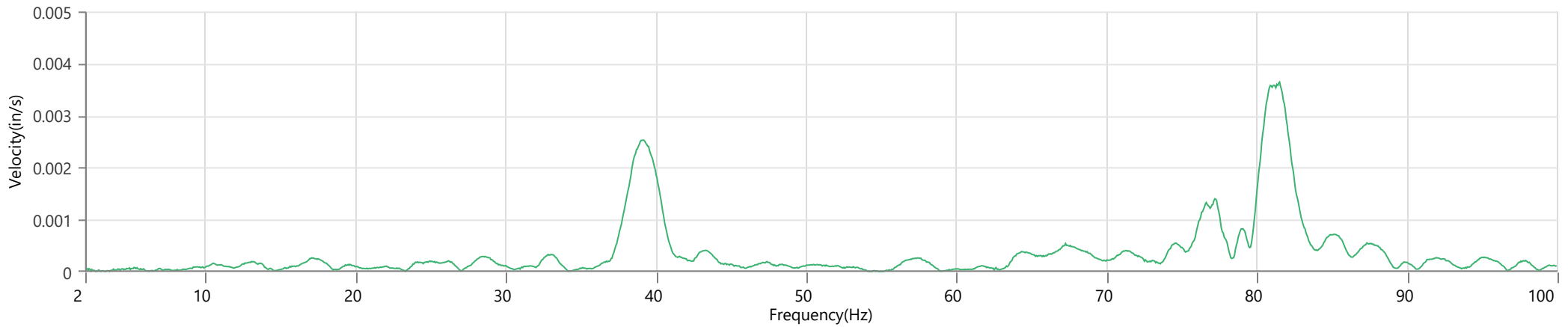
Extended Note N30.49742 W98.21566

Post Event Notes No text to be displayed.

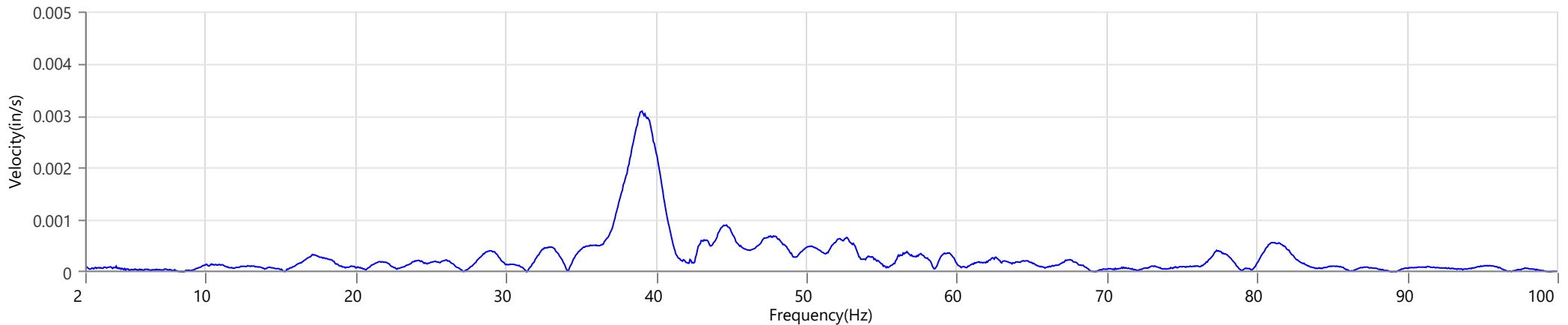
Tran - Dominant Frequency 39.0 Hz, Amplitude 0.0047 in/s (Peak Particle Velocity: 0.1626 in/s)



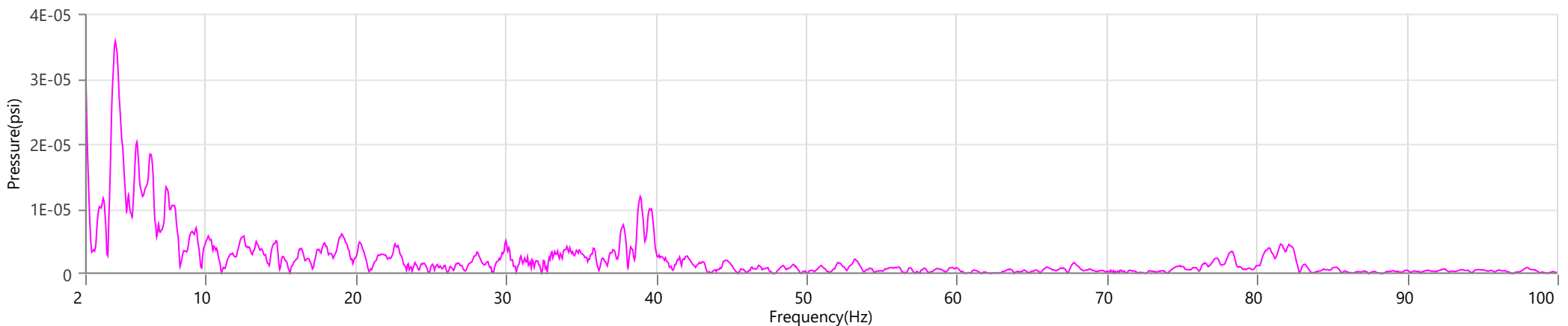
Vert - Dominant Frequency 81.5 Hz, Amplitude 0.0036 in/s (Peak Particle Velocity: 0.1406 in/s)



Long - Dominant Frequency 39.1 Hz, Amplitude 0.0031 in/s (Peak Particle Velocity: 0.1474 in/s)



Mic - Dominant Frequency 4.0 Hz, Amplitude 0.00004 psi (Peak Sound Pressure Level: 0.000605 psi)



Waveform Trigger Source
Trigger Level(s)
Trigger Level (Mic)
Pre-Trigger/Record Time
Sample Rate
Setup File Name
Operator

Long at April 28, 2026 10:43:42
 Geo 0.0200 in/s
 Mic 0.01029 psi, 131 dB(L)
 0.50 sec/8.0 sec (Fixed)
 4096 sps
 Spicewood Hwy 71 - Station 4.mmb
 Operator

Serial Number
Model Number
Battery Level
Unit Calibration
Event File Name
USB Sensor Support

UM21515
 Micromate ISEE 11.0CB
 3.8 volts
 December 23, 2025 by Instantel
 UM21515_20260428104342.IDFW
 Disabled

Notes

Location Station 4
 Client Spicewood Crushed Stone
 Company Hwy 71 Quarry
 General Notes IGS, Inc.

Extended Note N30.49821 W98.21578

Post Event Notes No text to be displayed.

Geophone

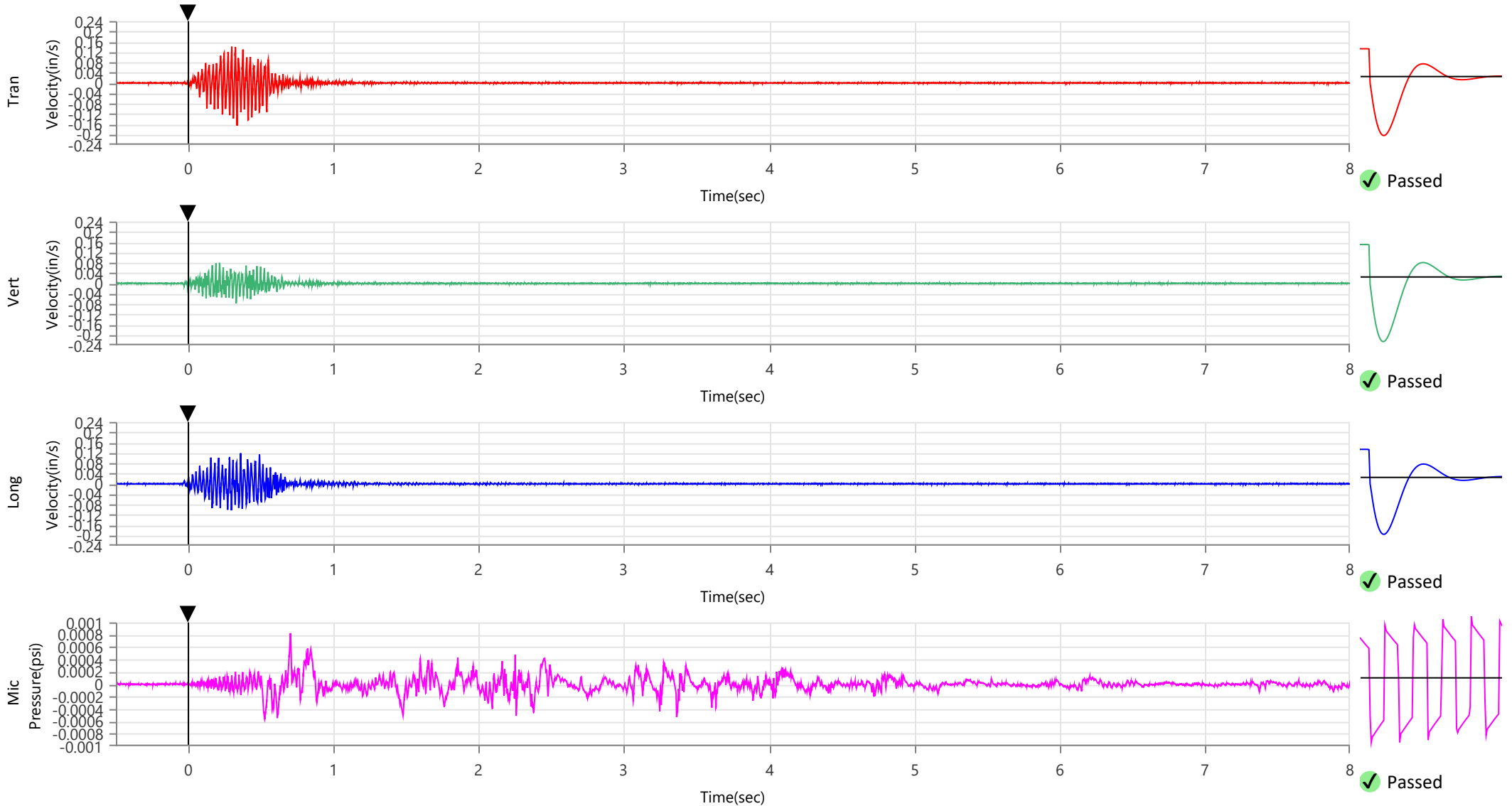
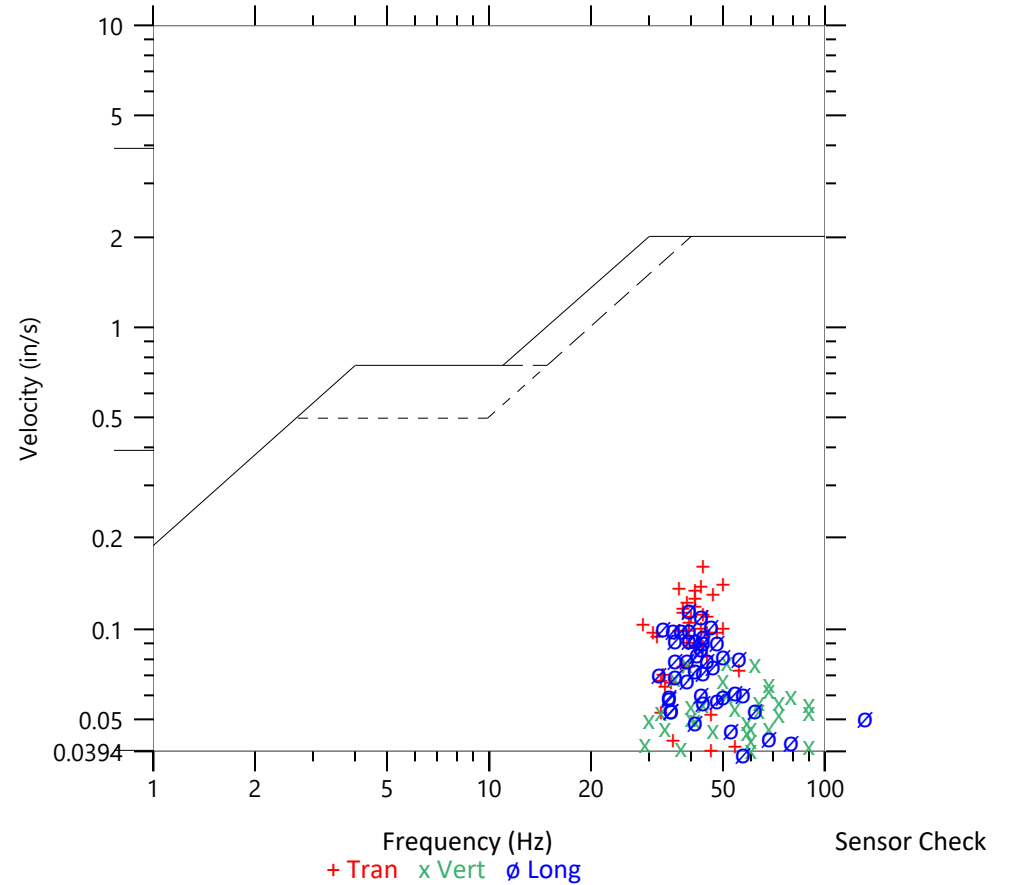
	Tran	Vert	Long
Peak Particle Velocity	0.1657 in/s	0.0797 in/s	0.1188 in/s
Zero Crossing Frequency	43.6 Hz	51.2 Hz	39.4 Hz
Time (Relative to Trigger)	0.335 sec	0.215 sec	0.359 sec
Peak Acceleration	0.155 g	0.102 g	0.142 g
Peak Displacement	0.001 in	0.000 in	0.000 in
Sensor Check	✓ Passed	✓ Passed	✓ Passed
Frequency	7.3 Hz	7.5 Hz	7.3 Hz
Overswing Ratio	4.6	4.4	4.2

Peak Vector Sum 0.1806 in/s at 0.335 sec

ISEE Linear Microphone

Peak Sound Pressure Level 0.000826 psi
 Peak Sound Pressure Level 109.1 dB(L)
 Time (Relative to Trigger) 0.703 sec
 Zero Crossing Frequency 8.4 Hz
 Sensor Check ✓ Passed
 Frequency 19.7 Hz
 Test Amplitude 1280 mv

USBM RI8507 And OSMRE
 Velocity versus Frequency (Zero Crossing)



Waveform Trigger Source
Trigger Level(s)
Trigger Level (Mic)
Pre-Trigger/Record Time
Sample Rate
Setup File Name
Operator

Long at April 28, 2026 10:43:42
 Geo 0.0200 in/s
 Mic 0.01029 psi, 131 dB(L)
 0.50 sec/8.0 sec (Fixed)
 4096 sps
 Spicewood Hwy 71 - Station 4.mmb
 Operator

Serial Number
Model Number
Battery Level
Unit Calibration
Event File Name
USB Sensor Support

UM21515
 Micromate ISEE 11.0CB
 3.8 volts
 December 23, 2025 by Instantel
 UM21515_20260428104342.IDFW
 Disabled

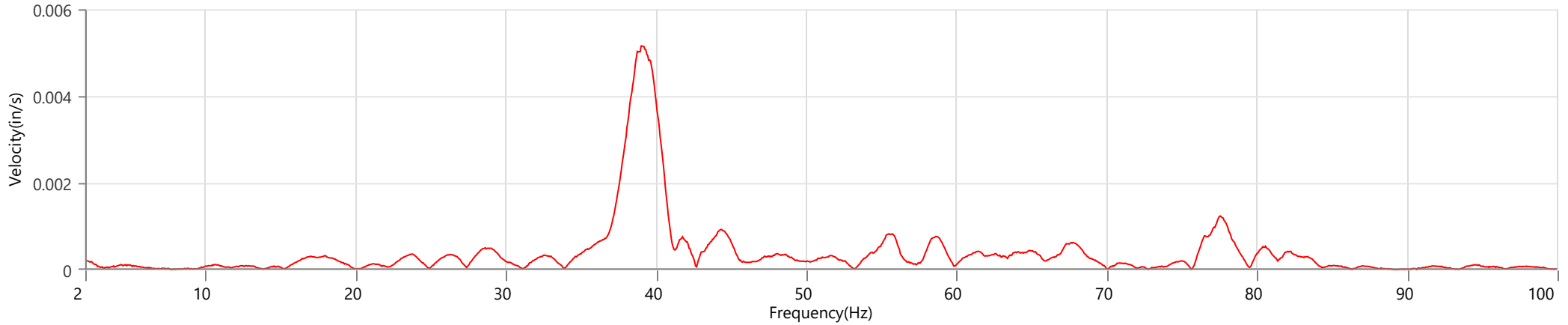
Notes

Location Station 4
 Client Spicewood Crushed Stone
 Company Hwy 71 Quarry
 General Notes IGS, Inc.

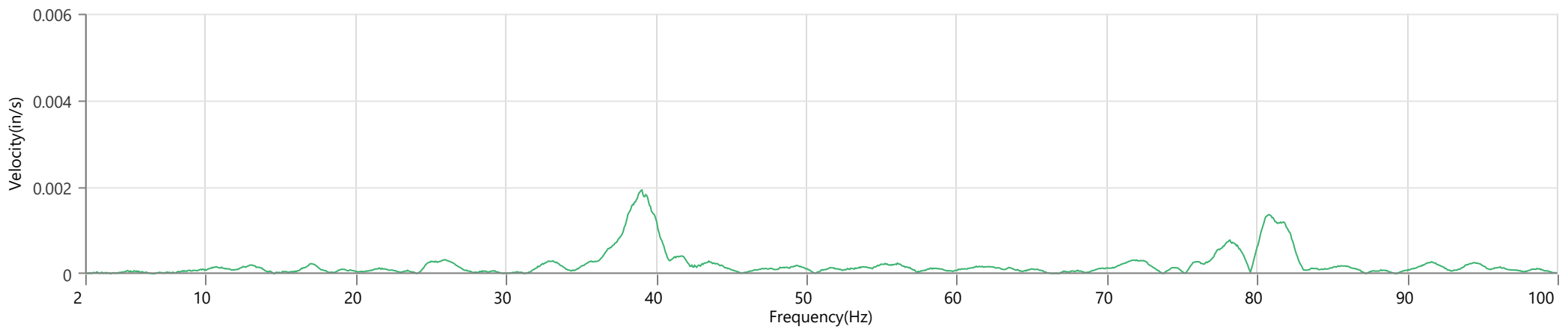
Extended Note N30.49821 W98.21578

Post Event Notes No text to be displayed.

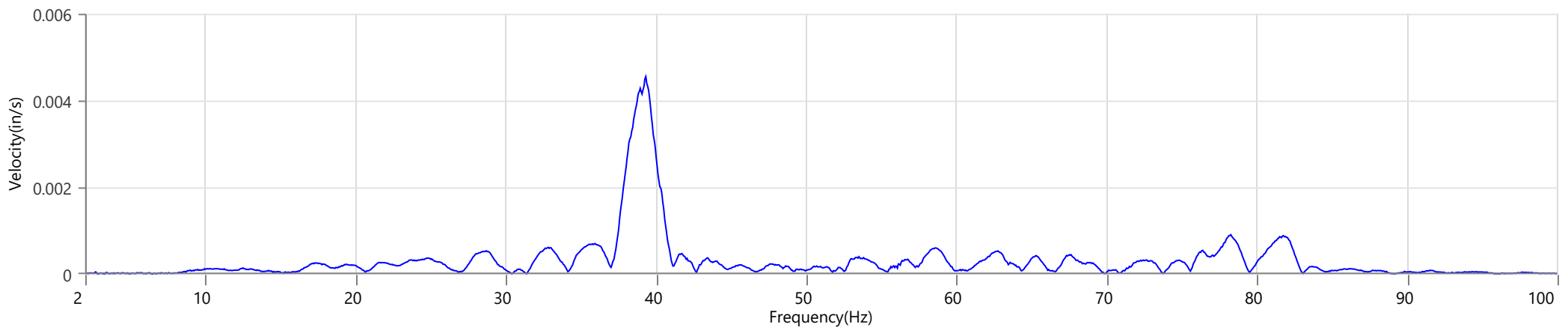
Tran - Dominant Frequency 39.1 Hz, Amplitude 0.0052 in/s (Peak Particle Velocity: 0.1657 in/s)



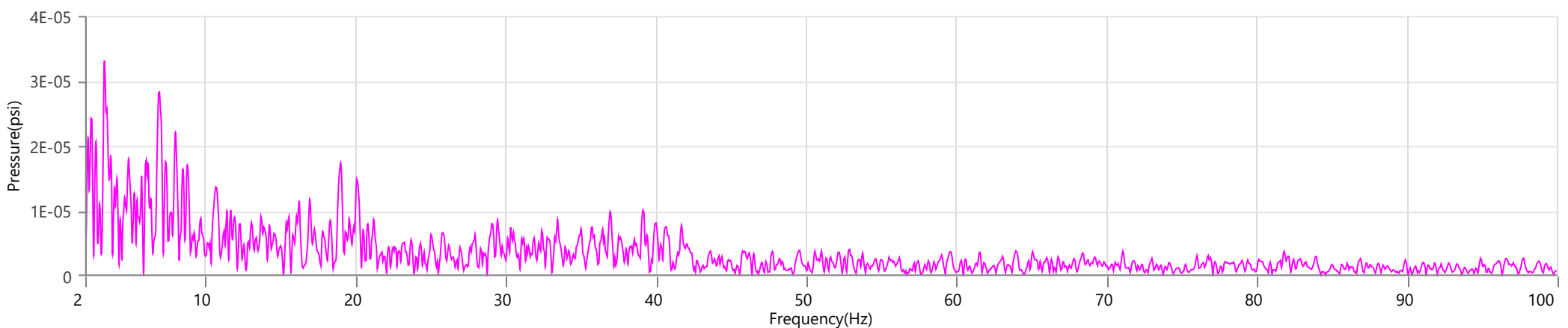
Vert - Dominant Frequency 39.1 Hz, Amplitude 0.0019 in/s (Peak Particle Velocity: 0.0797 in/s)



Long - Dominant Frequency 39.3 Hz, Amplitude 0.0046 in/s (Peak Particle Velocity: 0.1188 in/s)



Mic - Dominant Frequency 3.2 Hz, Amplitude 0.00003 psi (Peak Sound Pressure Level: 0.000826 psi)



Waveform Trigger Source
Trigger Level(s)
Trigger Level (Mic)
Pre-Trigger/Record Time
Sample Rate
Setup File Name
Operator

Long at April 28, 2026 10:43:39
 Geo 0.0200 in/s
 Mic 0.01029 psi, 131 dB(L)
 0.50 sec/8.0 sec (Fixed)
 4096 sps
 Spicewood Hwy 71 - Station 5.mmb
 Operator

Serial Number
Model Number
Battery Level
Unit Calibration
Event File Name
USB Sensor Support

UM6323
 Micromate ISEE 11.0CB
 3.8 volts
 January 6, 2026 by Instantel
 UM6323_20260428104339.IDFW
 Disabled

Notes

Location Station 5
 Client Spicewood Crushed Stone
 Company Hwy 71 Quarry
 General Notes IGS, Inc.

Extended Note N30.49911 W98.21538

Post Event Notes No text to be displayed.

Geophone

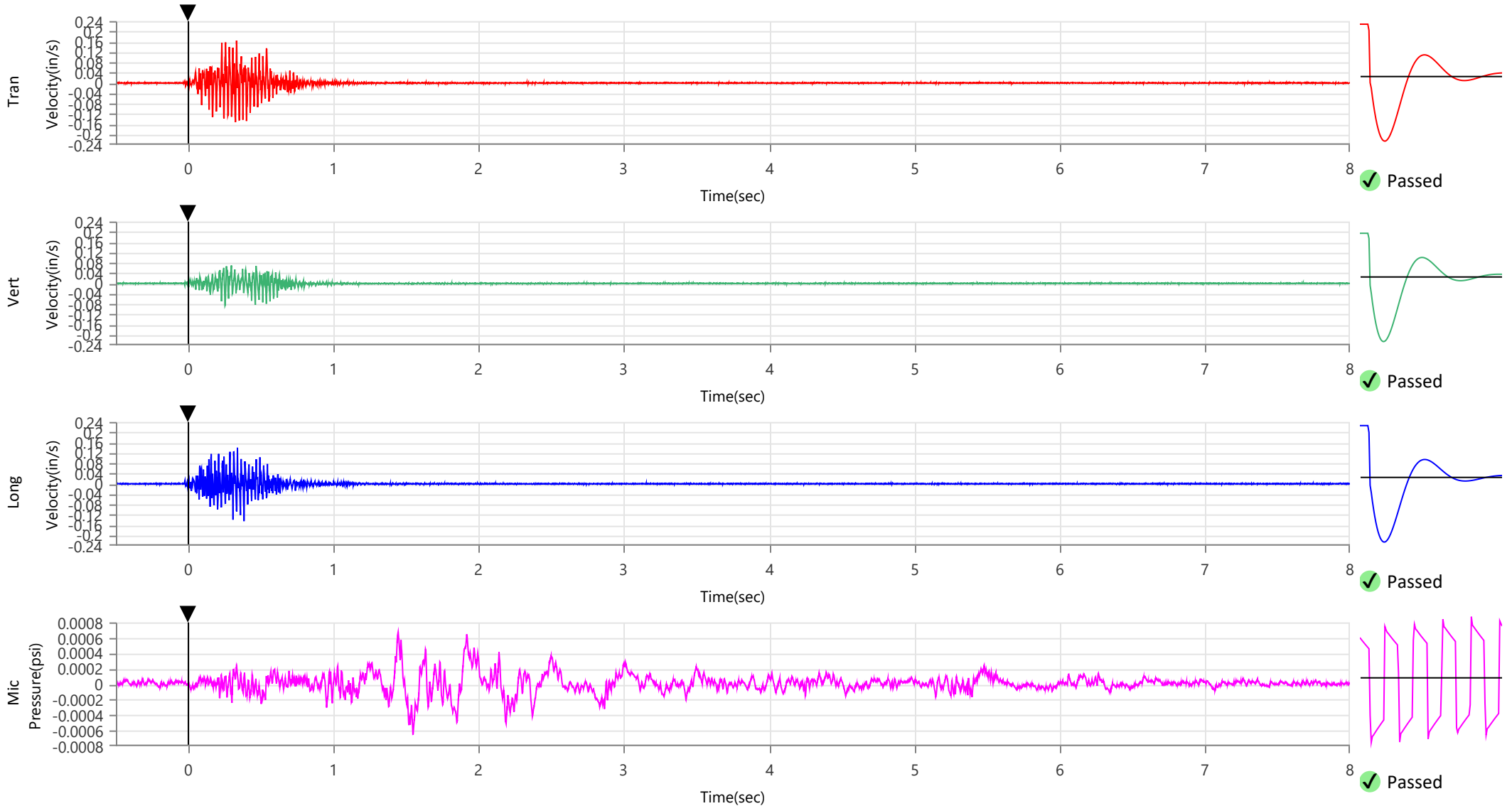
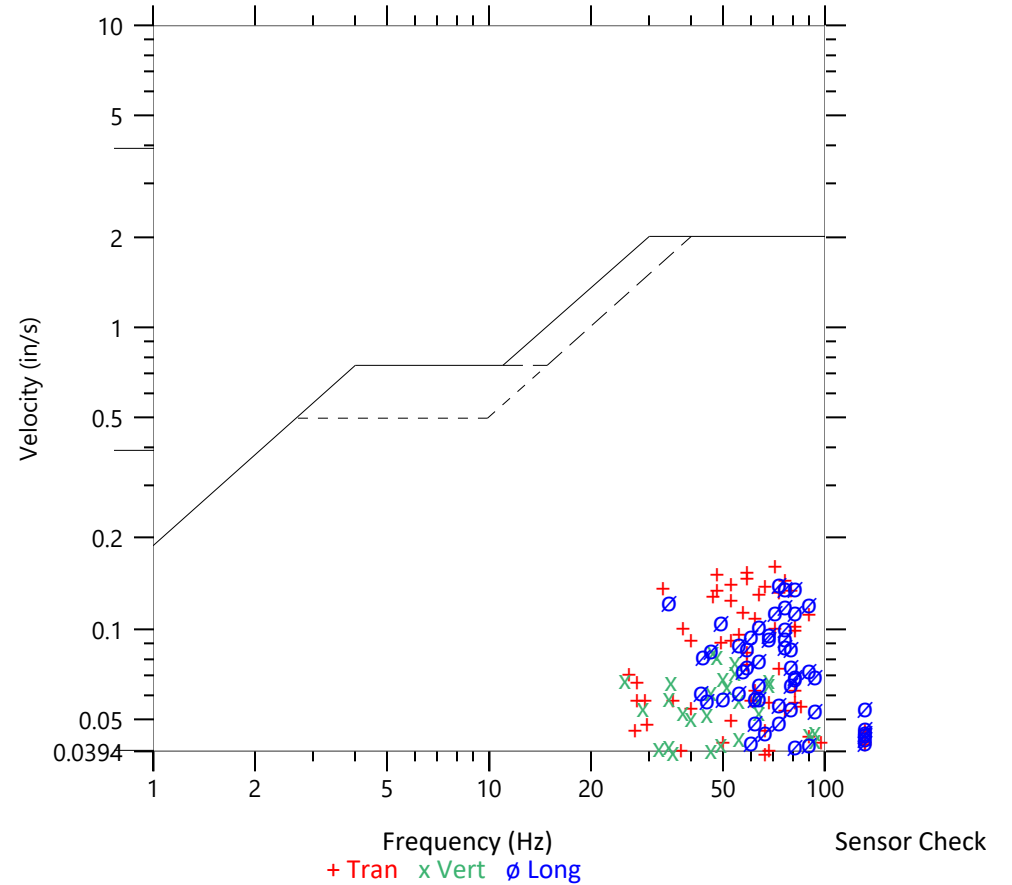
	Tran	Vert	Long
Peak Particle Velocity	0.1645 in/s	0.0863 in/s	0.1449 in/s
Zero Crossing Frequency	70.6 Hz	46.5 Hz	73.1 Hz
Time (Relative to Trigger)	0.332 sec	0.253 sec	0.383 sec
Peak Acceleration	0.197 g	0.122 g	0.230 g
Peak Displacement	0.000 in	0.000 in	0.000 in
Sensor Check	✓ Passed	✓ Passed	✓ Passed
Frequency	7.5 Hz	7.7 Hz	7.3 Hz
Overswing Ratio	2.9	3.3	3.6

Peak Vector Sum 0.1911 in/s at 0.332 sec

ISEE Linear Microphone

Peak Sound Pressure Level 0.000677 psi
 Peak Sound Pressure Level 107.4 dB(L)
 Time (Relative to Trigger) 1.445 sec
 Zero Crossing Frequency 7.6 Hz
 Sensor Check ✓ Passed
 Frequency 19.7 Hz
 Test Amplitude 1266 mv

USBM R18507 And OSMRE
 Velocity versus Frequency (Zero Crossing)



Waveform Trigger Source
Trigger Level(s)
Trigger Level (Mic)
Pre-Trigger/Record Time
Sample Rate
Setup File Name
Operator

Long at April 28, 2026 10:43:39
 Geo 0.0200 in/s
 Mic 0.01029 psi, 131 dB(L)
 0.50 sec/8.0 sec (Fixed)
 4096 sps
 Spicewood Hwy 71 - Station 5.mmb
 Operator

Serial Number
Model Number
Battery Level
Unit Calibration
Event File Name
USB Sensor Support

UM6323
 Micromate ISEE 11.0CB
 3.8 volts
 January 6, 2026 by Instantel
 UM6323_20260428104339.IDFW
 Disabled

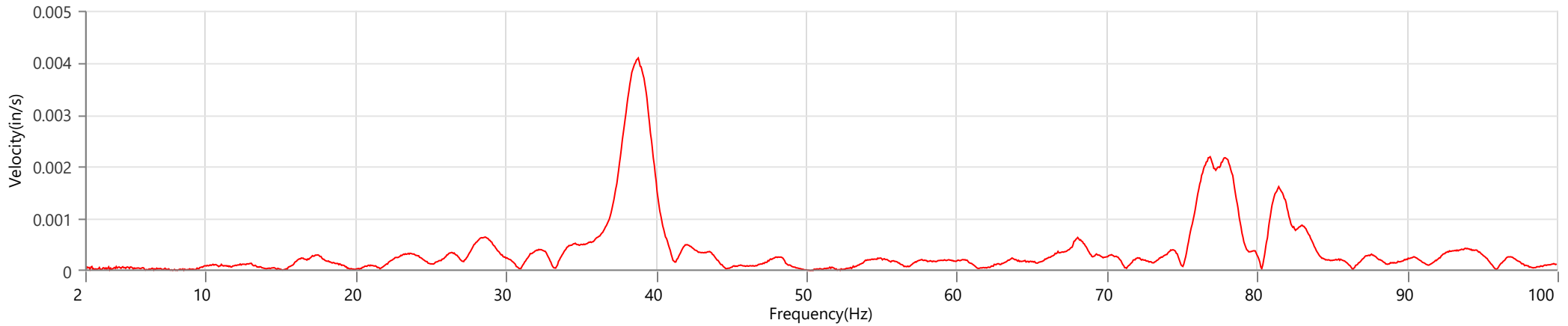
Notes

Location Station 5
 Client Spicewood Crushed Stone
 Company Hwy 71 Quarry
 General Notes IGS, Inc.

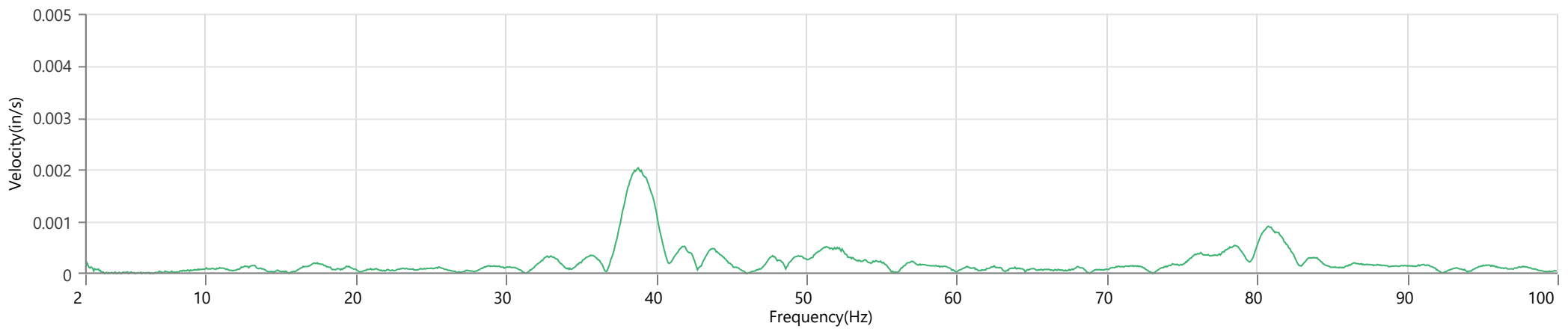
Extended Note N30.49911 W98.21538

Post Event Notes No text to be displayed.

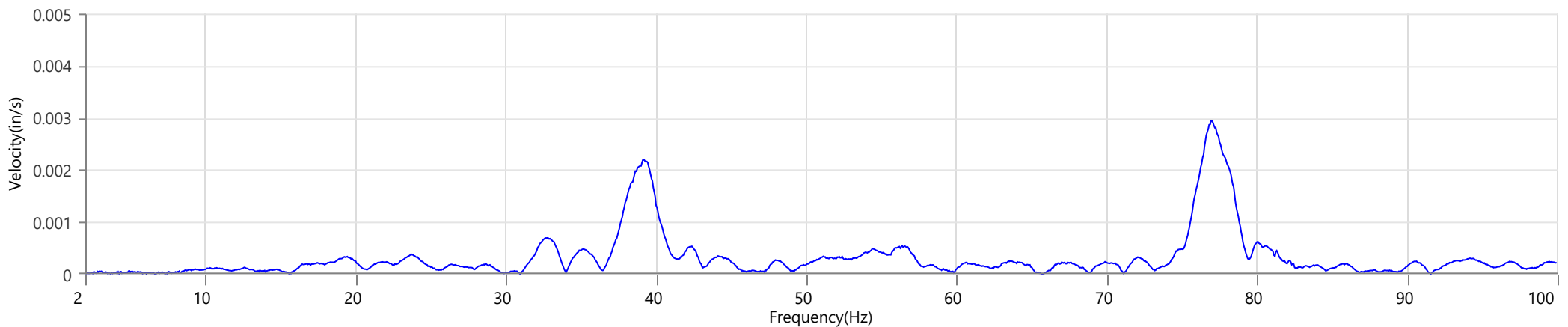
Tran - Dominant Frequency 38.8 Hz, Amplitude 0.0041 in/s (Peak Particle Velocity: 0.1645 in/s)



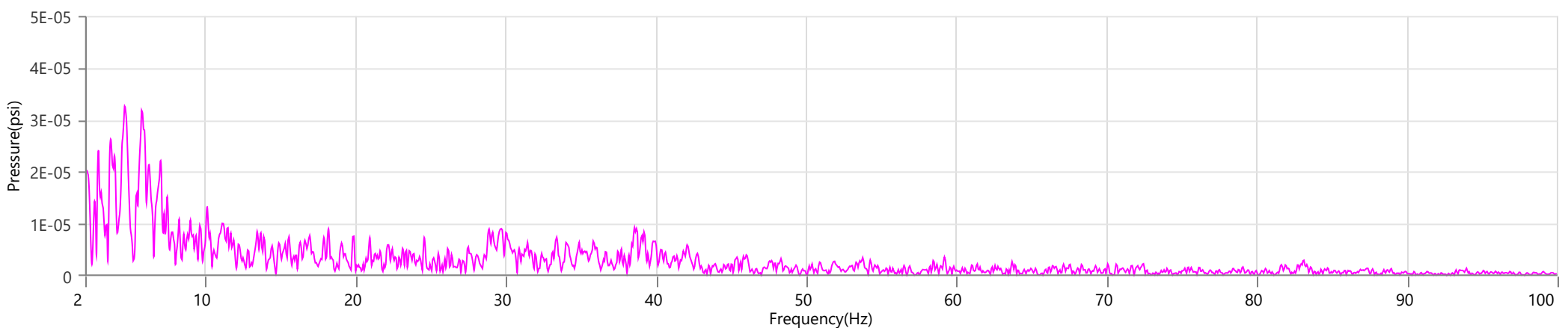
Vert - Dominant Frequency 38.8 Hz, Amplitude 0.0020 in/s (Peak Particle Velocity: 0.0863 in/s)



Long - Dominant Frequency 77.0 Hz, Amplitude 0.0029 in/s (Peak Particle Velocity: 0.1449 in/s)



Mic - Dominant Frequency 4.6 Hz, Amplitude 0.00003 psi (Peak Sound Pressure Level: 0.000677 psi)



Waveform Trigger Source
Trigger Level(s)
Trigger Level (Mic)
Pre-Trigger/Record Time
Sample Rate
Setup File Name
Operator

Tran at April 28, 2026 10:43:40
 Geo 0.0200 in/s
 Mic 0.01029 psi, 131 dB(L)
 0.50 sec/8.0 sec (Fixed)
 4096 sps
 Spicewood Hwy 71 - Station 6.mmb
 Operator

Serial Number
Model Number
Battery Level
Unit Calibration
Event File Name
USB Sensor Support

UM21525
 Micromate ISEE 11.0CB
 3.8 volts
 April 6, 2026 by Instantel
 UM21525_20260428104340.IDFW
 Disabled

Notes

Location Station 6
 Client Spicewood Crushed Stone
 Company Hwy 71 Quarry
 General Notes IGS, Inc.

Extended Note N30.495113 W98.206539

Post Event Notes No text to be displayed.

Geophone

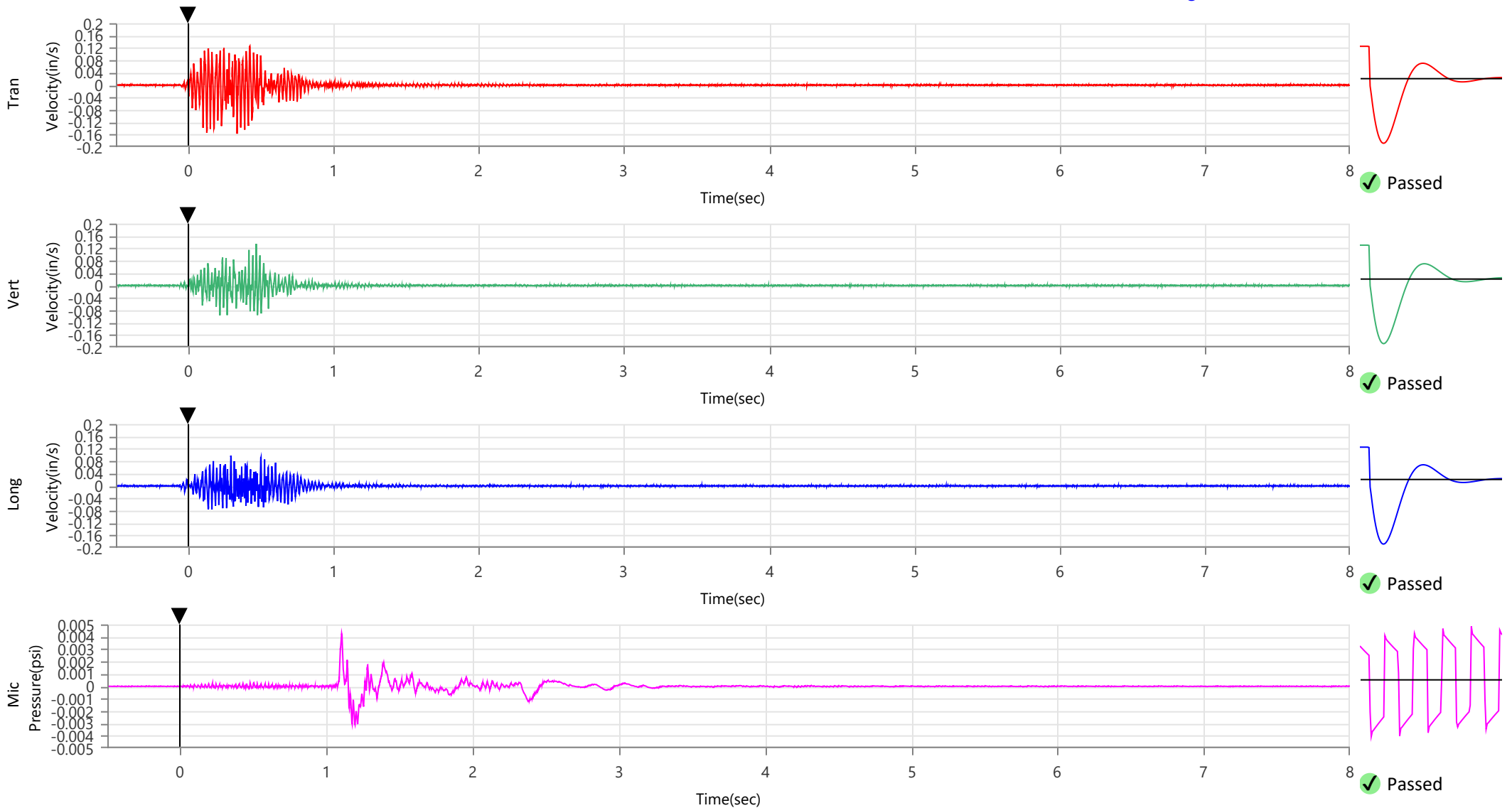
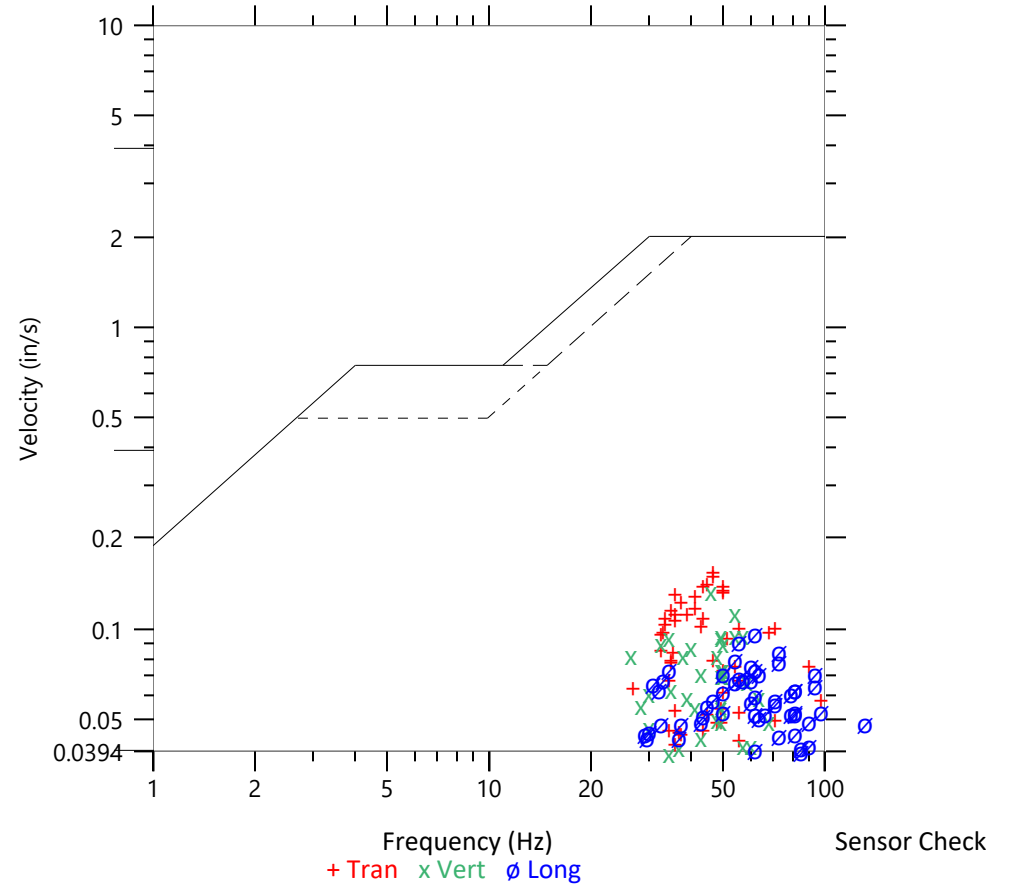
	Tran	Vert	Long
Peak Particle Velocity	0.1573 in/s	0.1347 in/s	0.0981 in/s
Zero Crossing Frequency	46.5 Hz	45.5 Hz	62.1 Hz
Time (Relative to Trigger)	0.336 sec	0.468 sec	0.293 sec
Peak Acceleration	0.151 g	0.125 g	0.112 g
Peak Displacement	0.001 in	0.000 in	0.000 in
Sensor Check	✓ Passed	✓ Passed	✓ Passed
Frequency	7.5 Hz	7.3 Hz	7.3 Hz
Overswing Ratio	4.1	4.2	4.3

Peak Vector Sum 0.1604 in/s at 0.126 sec

ISEE Linear Microphone

Peak Sound Pressure Level 0.004258 psi
 Peak Sound Pressure Level 123.3 dB(L)
 Time (Relative to Trigger) 1.104 sec
 Zero Crossing Frequency 6.8 Hz
 Sensor Check ✓ Passed
 Frequency 19.7 Hz
 Test Amplitude 1274 mv

USBM R18507 And OSMRE
 Velocity versus Frequency (Zero Crossing)



Waveform Trigger Source
Trigger Level(s)
Trigger Level (Mic)
Pre-Trigger/Record Time
Sample Rate
Setup File Name
Operator

Tran at April 28, 2026 10:43:40
 Geo 0.0200 in/s
 Mic 0.01029 psi, 131 dB(L)
 0.50 sec/8.0 sec (Fixed)
 4096 sps
 Spicewood Hwy 71 - Station 6.mmb
 Operator

Serial Number
Model Number
Battery Level
Unit Calibration
Event File Name
USB Sensor Support

UM21525
 Micromate ISEE 11.0CB
 3.8 volts
 April 6, 2026 by Instantel
 UM21525_20260428104340.IDFW
 Disabled

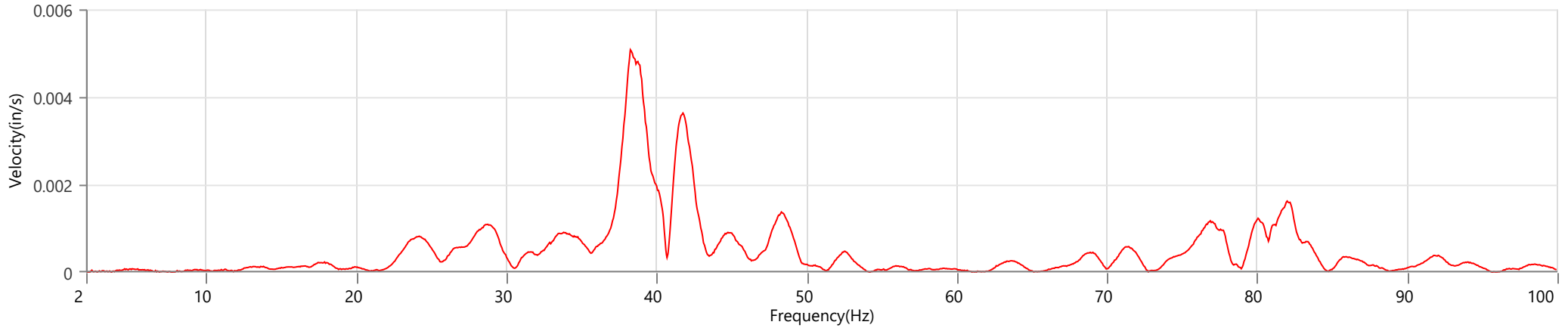
Notes

Location Station 6
 Client Spicewood Crushed Stone
 Company Hwy 71 Quarry
 General Notes IGS, Inc.

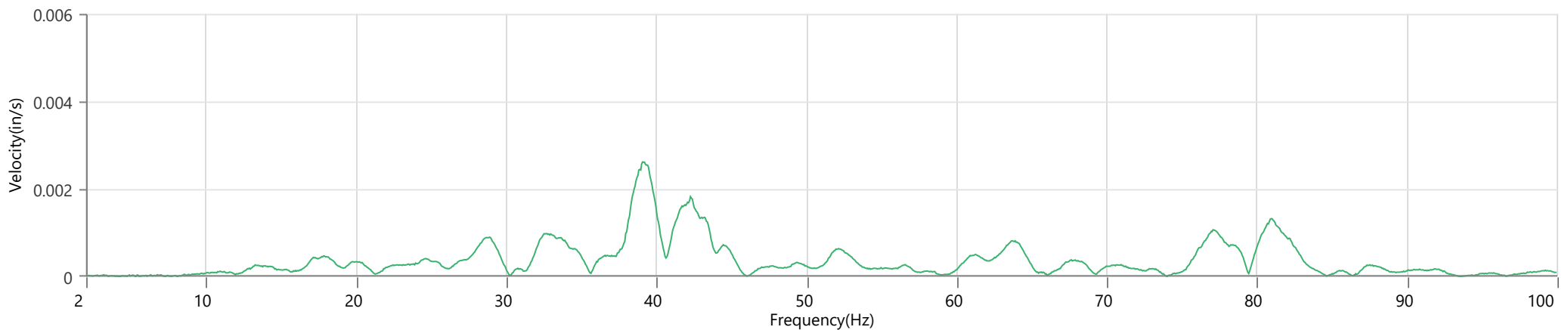
Extended Note N30.495113 W98.206539

Post Event Notes No text to be displayed.

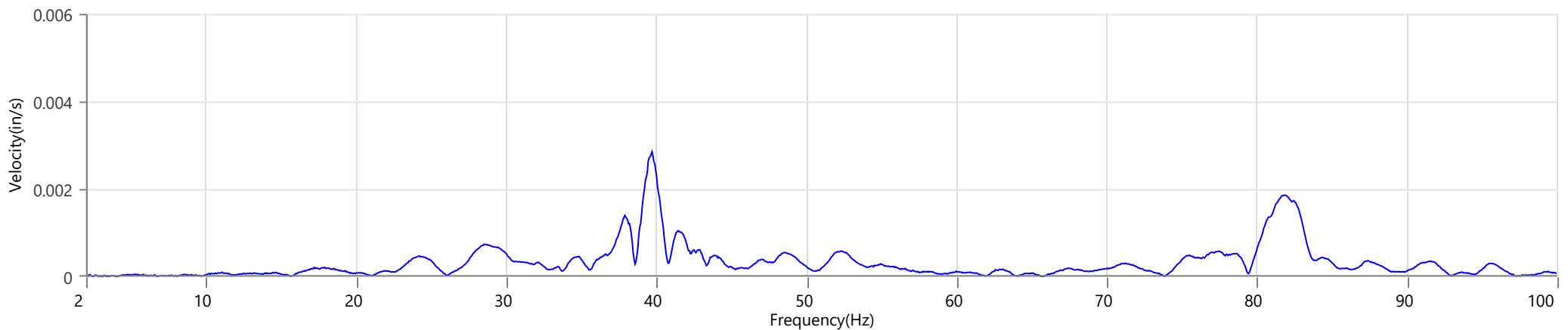
Tran - Dominant Frequency 38.2 Hz, Amplitude 0.0051 in/s (Peak Particle Velocity: 0.1573 in/s)



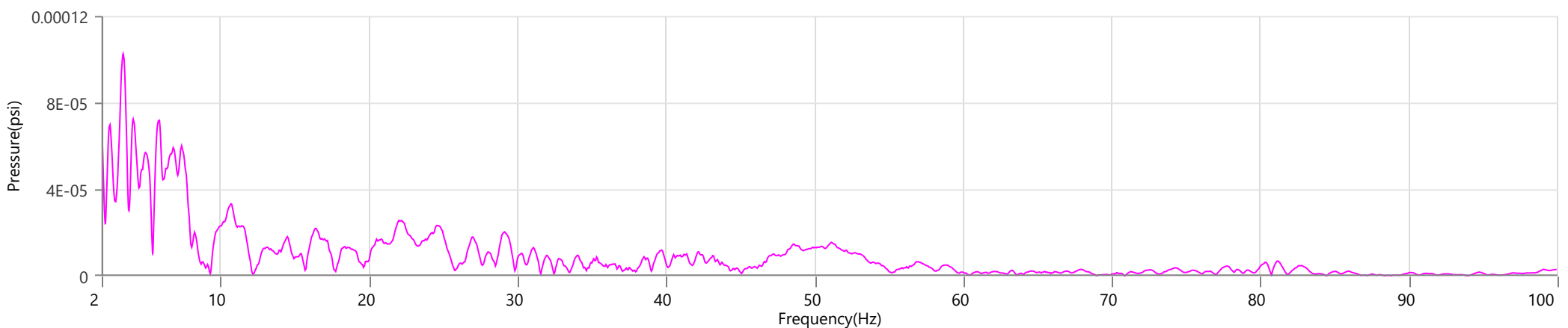
Vert - Dominant Frequency 39.1 Hz, Amplitude 0.0026 in/s (Peak Particle Velocity: 0.1347 in/s)



Long - Dominant Frequency 39.7 Hz, Amplitude 0.0029 in/s (Peak Particle Velocity: 0.0981 in/s)



Mic - Dominant Frequency 3.4 Hz, Amplitude 0.00010 psi (Peak Sound Pressure Level: 0.004258 psi)



Start April 28, 2026 00:00:05
Finish April 28, 2026 23:29:59
Number of Intervals/Interval 1409.91/60 sec
Sample Rate 4096 sps
Setup File Name Spicewood Hwy 71 - Noise 2.mmb
Operator Operator

Serial Number UM21399
Model Number Micromate ISEE 11.0CB
Battery Level 3.8 volts
Unit Calibration March 25, 2026 by Instantel
Microphone Calibration UA10767, February 18, 2025 by Instantel
Event File Name UM21399_20260428000005.IDFH
USB Sensor Support Disabled

Notes
Location Noise 2
Client Spicewood Crushed Stone
Company Hwy 71 Quarry
General Notes IGS, Inc.

Extended Note Station 5N30.49911 W98.21538

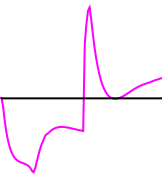
Post Event Notes No text to be displayed.

Sound Level Microphone

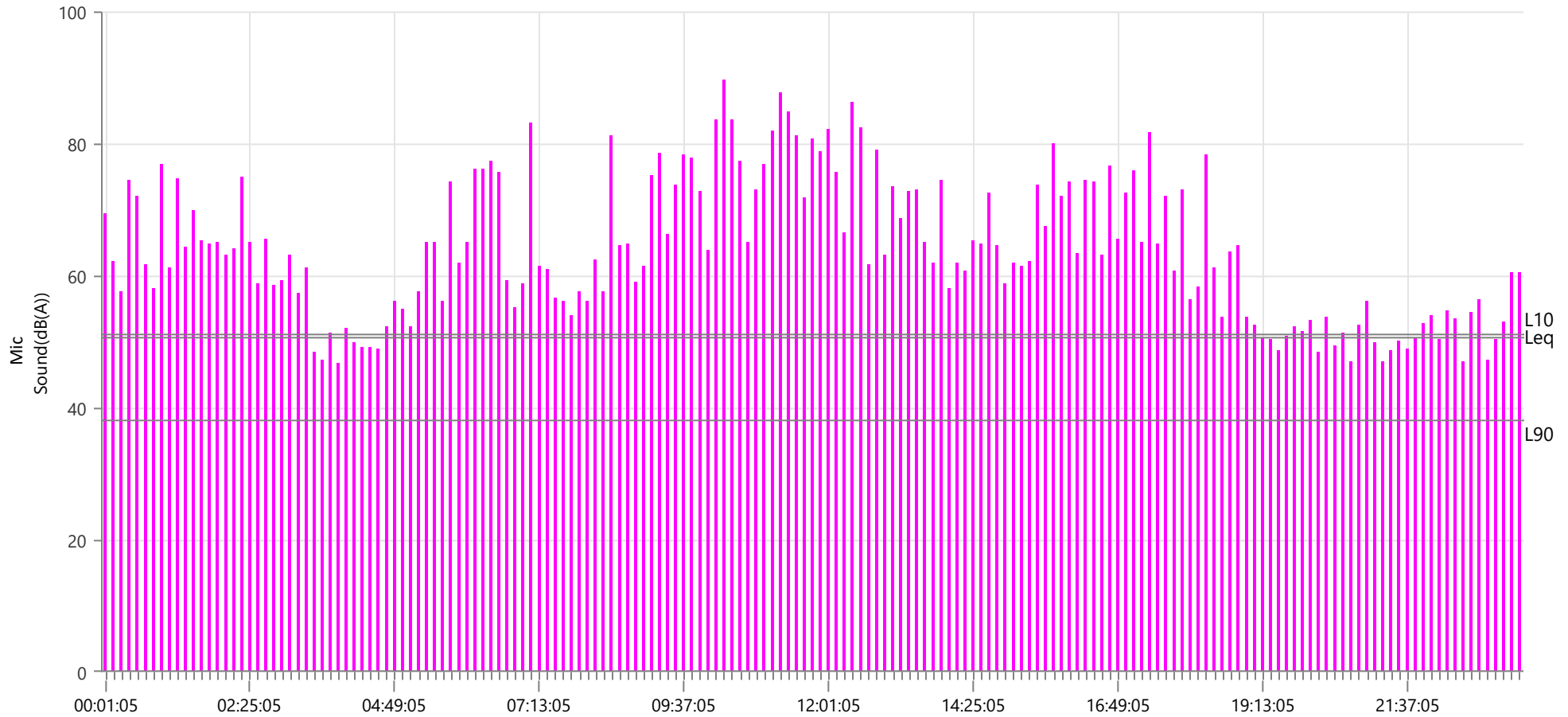
LMax 89.6 dB(A)
Date Apr 28, 2026
Time 10:22:05

	LMin	L10	L90	Leq
Sound(dB(A))	35.3	51	38	50.7
Sensor Check	✓ Passed			
Test Amplitude	1096 mv			

Sensor Check



✓ Passed



Start April 28, 2026 00:00:10
Finish April 28, 2026 23:29:59
Number of Intervals/Interval 1409.82/60 sec
Sample Rate 4096 sps
Setup File Name Spicewood Hwy 71 - Noise 3.mmb
Operator Operator

Serial Number UM13925
Model Number Micromate ISEE 11.0CB
Battery Level 3.8 volts
Unit Calibration April 6, 2026 by Instantel
Microphone Calibration UA10751, April 6, 2026 by Instantel
Event File Name UM13925_20260428000010.IDFH
USB Sensor Support Disabled

Notes
Location Noise 3
Client Spicewood Crushed Stone
Company Hwy 71 Quarry
General Notes IGS, Inc.

Extended Note N30.490958 W98.213495

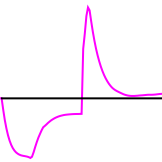
Post Event Notes No text to be displayed.

Sound Level Microphone

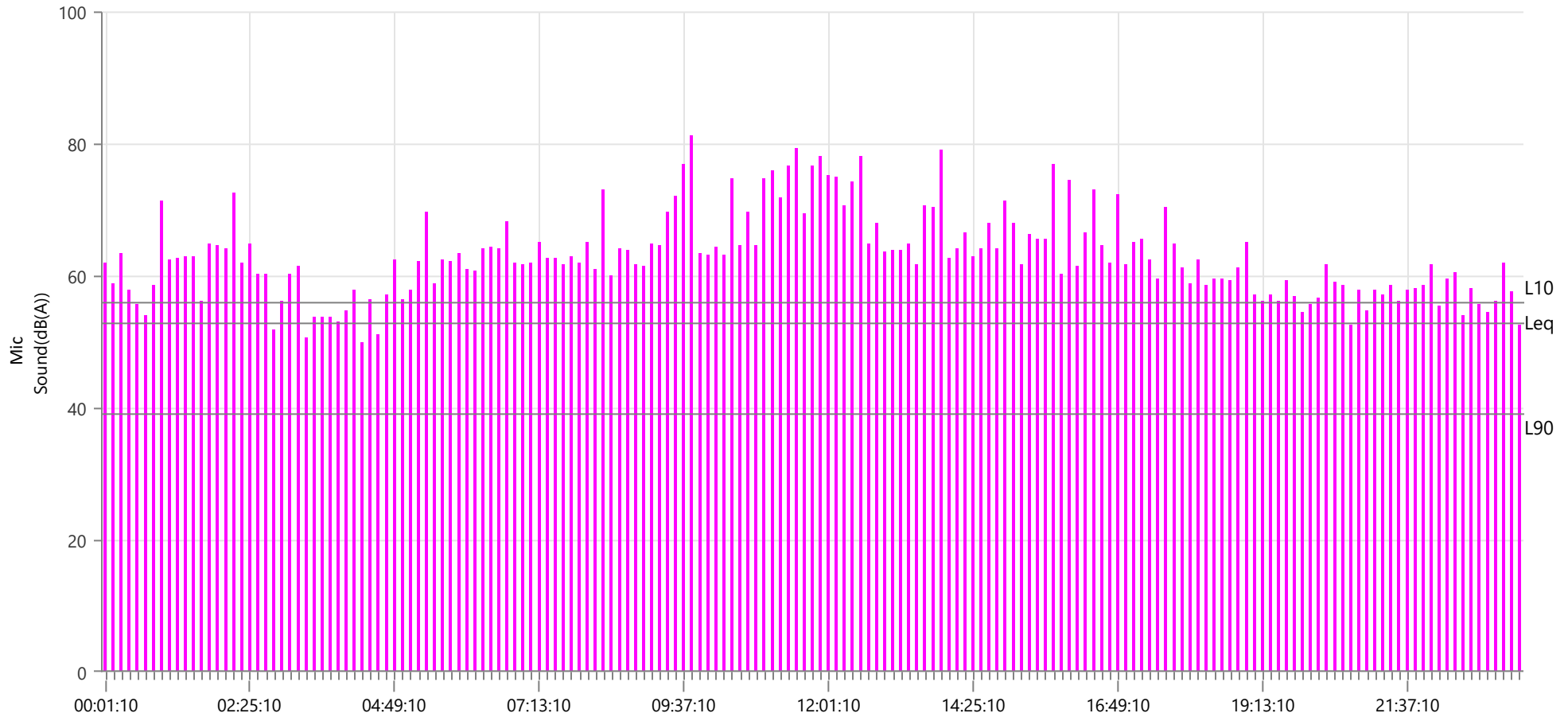
LMax 81.1 dB(A)
Date Apr 28, 2026
Time 09:49:10

	LMin	L10	L90	Leq
Sound(dB(A))	32.4	56	39	52.8
Sensor Check	✓ Passed			
Test Amplitude	1084 mv			

Sensor Check



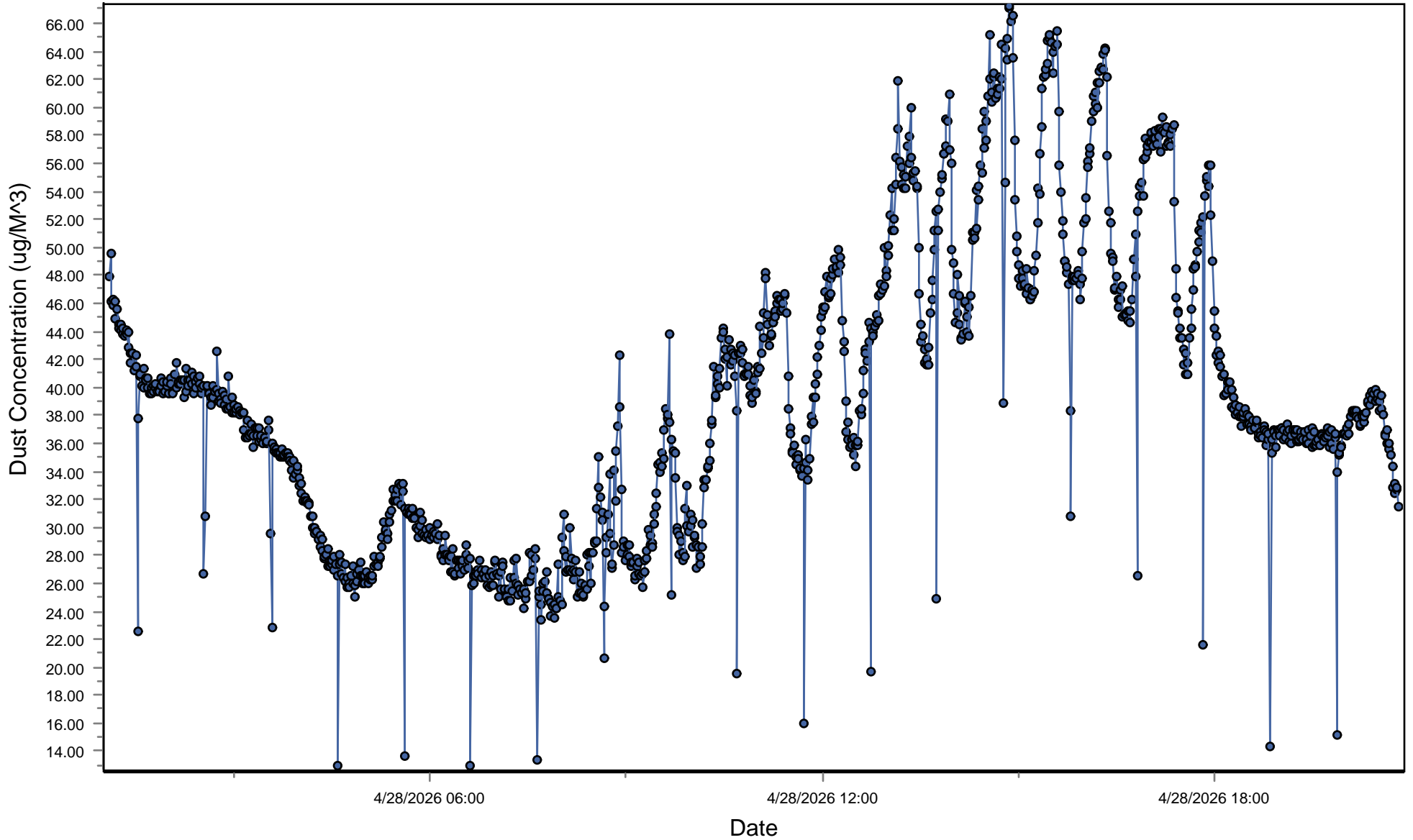
✓ Passed



Spicewood Crushed Stone - Hwy 71 Quarry

South Dust Monitor

● D100@AvgPartL



Spicewood Crushed Stone - Hwy 71 Quarry

North Dust Monitor

● D100@AvgPartL

