

**Waveform Trigger Source**  
**Trigger Level(s)**  
**Trigger Level (Mic)**  
**Pre-Trigger/Record Time**  
**Sample Rate**  
**Setup File Name**  
**Operator**

Vert at May 14, 2026 13:46:18  
 Geo 0.0200 in/s  
 Mic 0.01029 psi, 131 dB(L)  
 0.50 sec/8.0 sec (Fixed)  
 4096 sps  
 Spicewood Hwy 71 - Station 1.mmb  
 Operator

**Serial Number**  
**Model Number**  
**Battery Level**  
**Unit Calibration**  
**Event File Name**  
**USB Sensor Support**

UM20084  
 Micromate ISEE 11.0CB  
 3.8 volts  
 December 31, 2025 by Instantel  
 UM20084\_20260514134618.IDFW  
 Disabled

**Notes**

Location Station 1  
 Client Spicewood Crushed Stone  
 Company Hwy 71 Quarry  
 General Notes IGS, Inc.

**Extended Note** N30.49572 W98.21577

**Post Event Notes** No text to be displayed.

**Geophone**

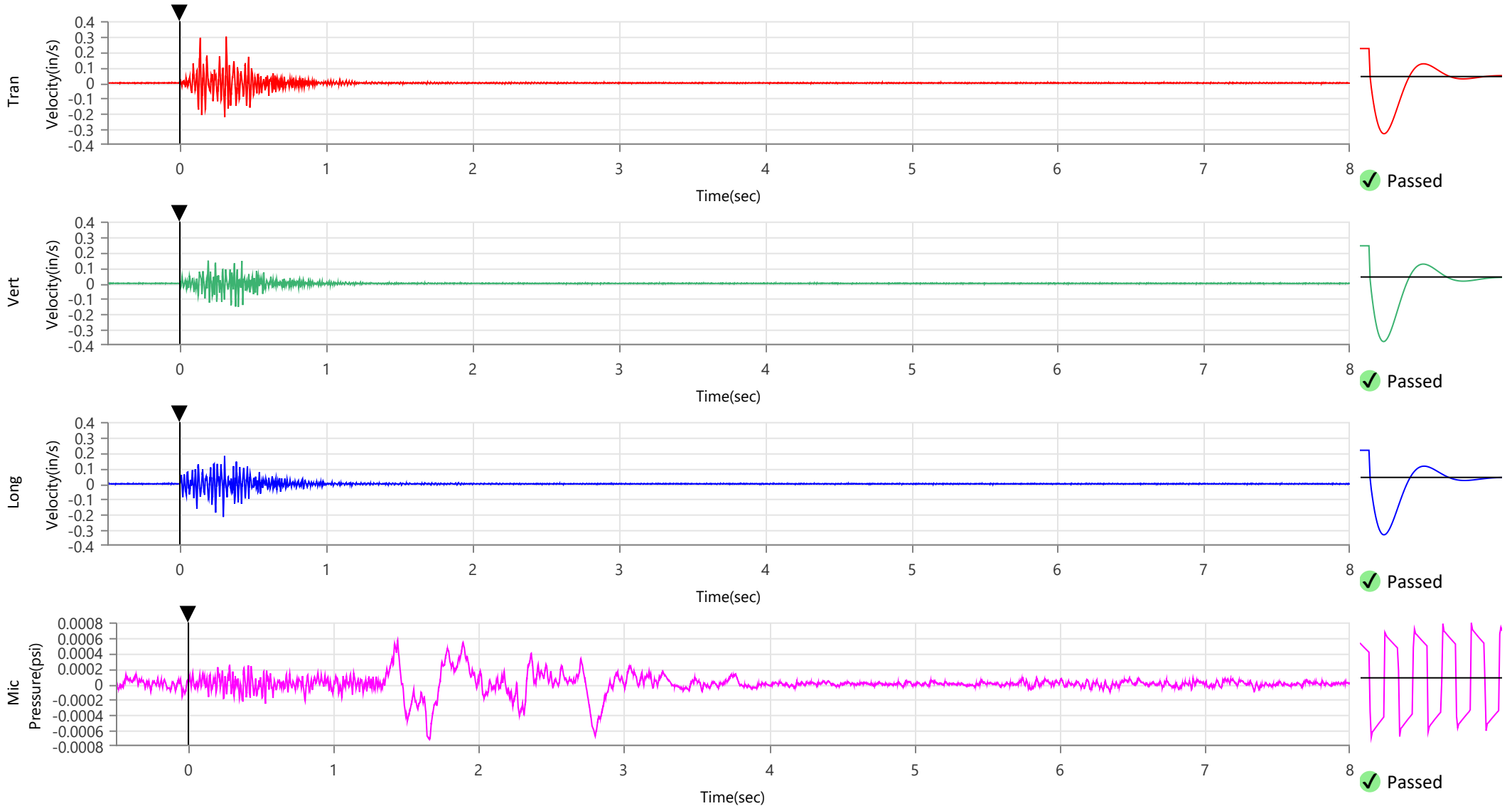
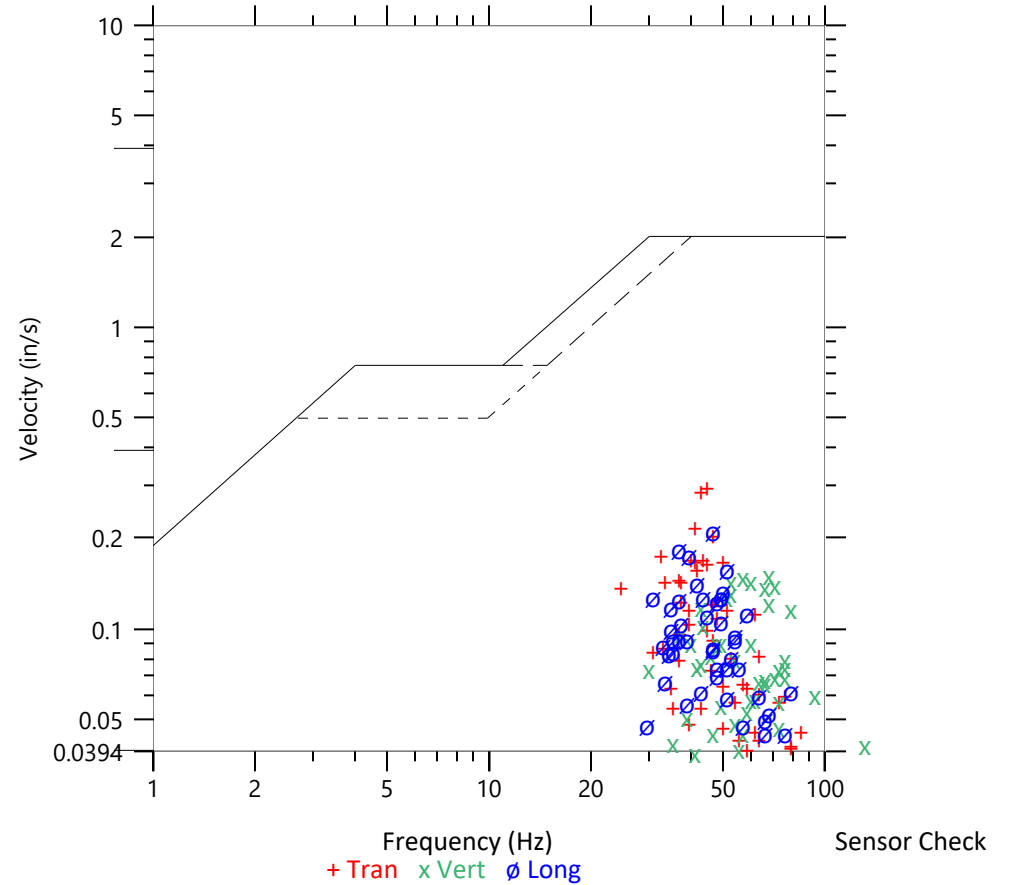
	Tran	Vert	Long
Peak Particle Velocity	0.2991 in/s	0.1524 in/s	0.2141 in/s
Zero Crossing Frequency	44.5 Hz	68.3 Hz	46.5 Hz
Time (Relative to Trigger)	0.313 sec	0.397 sec	0.294 sec
Peak Acceleration	0.253 g	0.181 g	0.197 g
Peak Displacement	0.001 in	0.000 in	0.001 in
Sensor Check	✓ Passed	✓ Passed	✓ Passed
Frequency	7.3 Hz	7.3 Hz	7.1 Hz
Overswing Ratio	4.4	5.0	5.1

Peak Vector Sum 0.3077 in/s at 0.313 sec

**ISEE Linear Microphone**

Peak Sound Pressure Level 0.000716 psi  
 Peak Sound Pressure Level 107.8 dB(L)  
 Time (Relative to Trigger) 1.661 sec  
 Zero Crossing Frequency 2.0 Hz  
 Sensor Check ✓ Passed  
 Frequency 19.7 Hz  
 Test Amplitude 1331 mv

**USBM R18507 And OSMRE**  
 Velocity versus Frequency (Zero Crossing)



**Waveform Trigger Source**  
**Trigger Level(s)**  
**Trigger Level (Mic)**  
**Pre-Trigger/Record Time**  
**Sample Rate**  
**Setup File Name**  
**Operator**

Vert at May 14, 2026 13:46:18  
 Geo 0.0200 in/s  
 Mic 0.01029 psi, 131 dB(L)  
 0.50 sec/8.0 sec (Fixed)  
 4096 sps  
 Spicewood Hwy 71 - Station 1.mmb  
 Operator

**Serial Number**  
**Model Number**  
**Battery Level**  
**Unit Calibration**  
**Event File Name**  
**USB Sensor Support**

UM20084  
 Micromate ISEE 11.0CB  
 3.8 volts  
 December 31, 2025 by Instantel  
 UM20084\_20260514134618.IDFW  
 Disabled

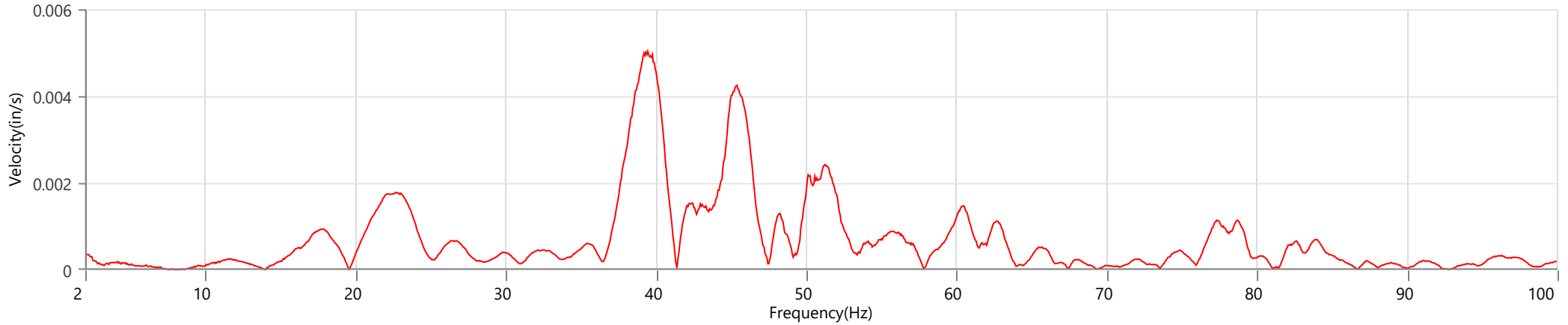
**Notes**

Location Station 1  
 Client Spicewood Crushed Stone  
 Company Hwy 71 Quarry  
 General Notes IGS, Inc.

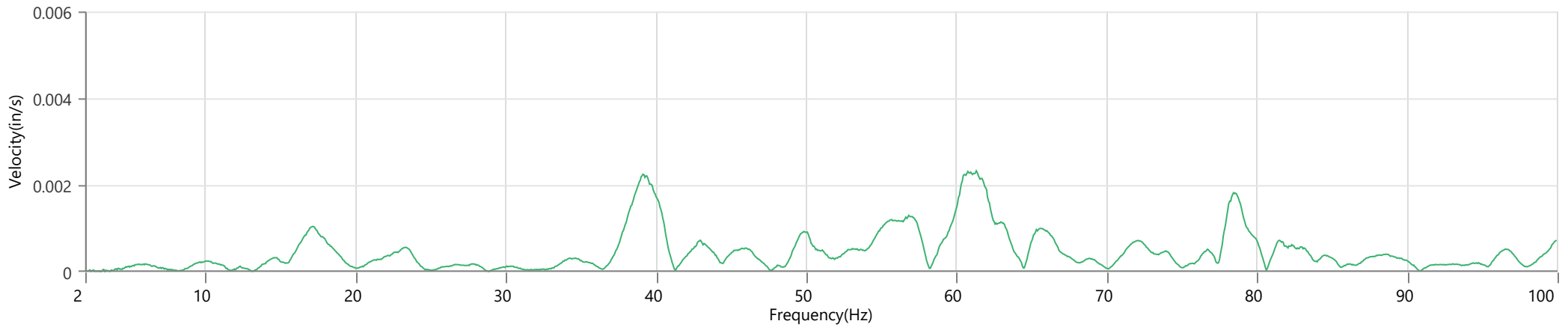
**Extended Note** N30.49572 W98.21577

**Post Event Notes** No text to be displayed.

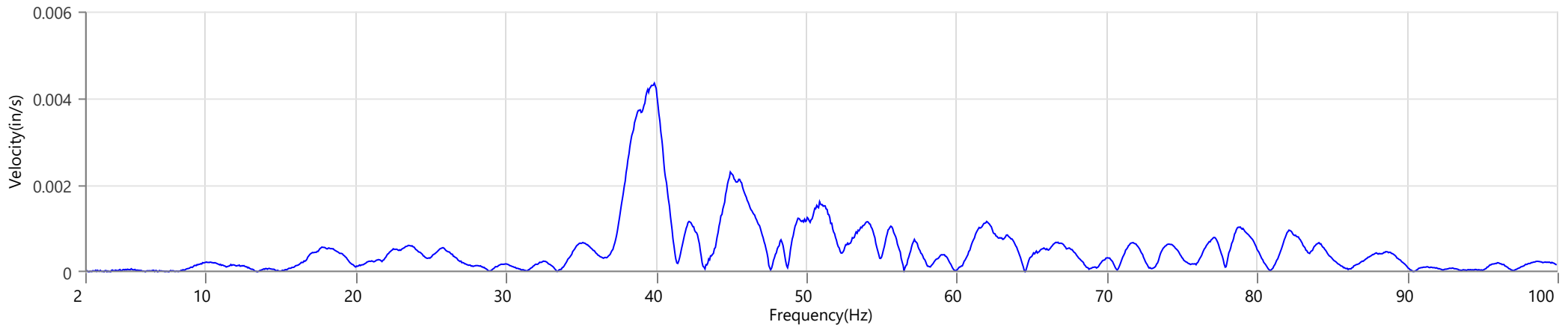
**Tran - Dominant Frequency 39.4 Hz, Amplitude 0.0050 in/s (Peak Particle Velocity: 0.2991 in/s)**



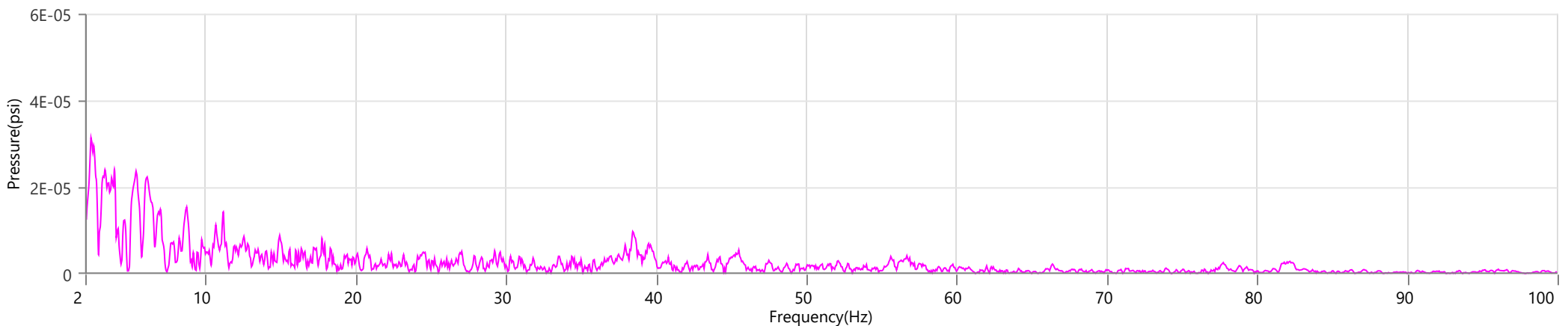
**Vert - Dominant Frequency 61.3 Hz, Amplitude 0.0023 in/s (Peak Particle Velocity: 0.1524 in/s)**



**Long - Dominant Frequency 39.9 Hz, Amplitude 0.0043 in/s (Peak Particle Velocity: 0.2141 in/s)**



**Mic - Dominant Frequency 2.4 Hz, Amplitude 0.00003 psi (Peak Sound Pressure Level: 0.000716 psi)**



**Waveform Trigger Source**  
**Trigger Level(s)**  
**Trigger Level (Mic)**  
**Pre-Trigger/Record Time**  
**Sample Rate**  
**Setup File Name**  
**Operator**

Long at May 14, 2026 13:46:19  
 Geo 0.0200 in/s  
 Mic 0.01029 psi, 131 dB(L)  
 0.31 sec/8.0 sec (Fixed)  
 4096 sps  
 Spicewood Hwy 71 - Station 2.mmb  
 Operator

**Serial Number**  
**Model Number**  
**Battery Level**  
**Unit Calibration**  
**Event File Name**  
**USB Sensor Support**

UM22230  
 Micromate ISEE 11.0CB  
 3.8 volts  
 December 13, 2025 by Instantel  
 UM22230\_20260514134619.IDFW  
 Disabled

**Notes**

Location Station 2  
 Client Spicewood Crushed Stone  
 Company Hwy 71  
 General Notes IGS, Inc

**Extended Note** N30.49650 W-98.21572

**Post Event Notes** No text to be displayed.

**Geophone**

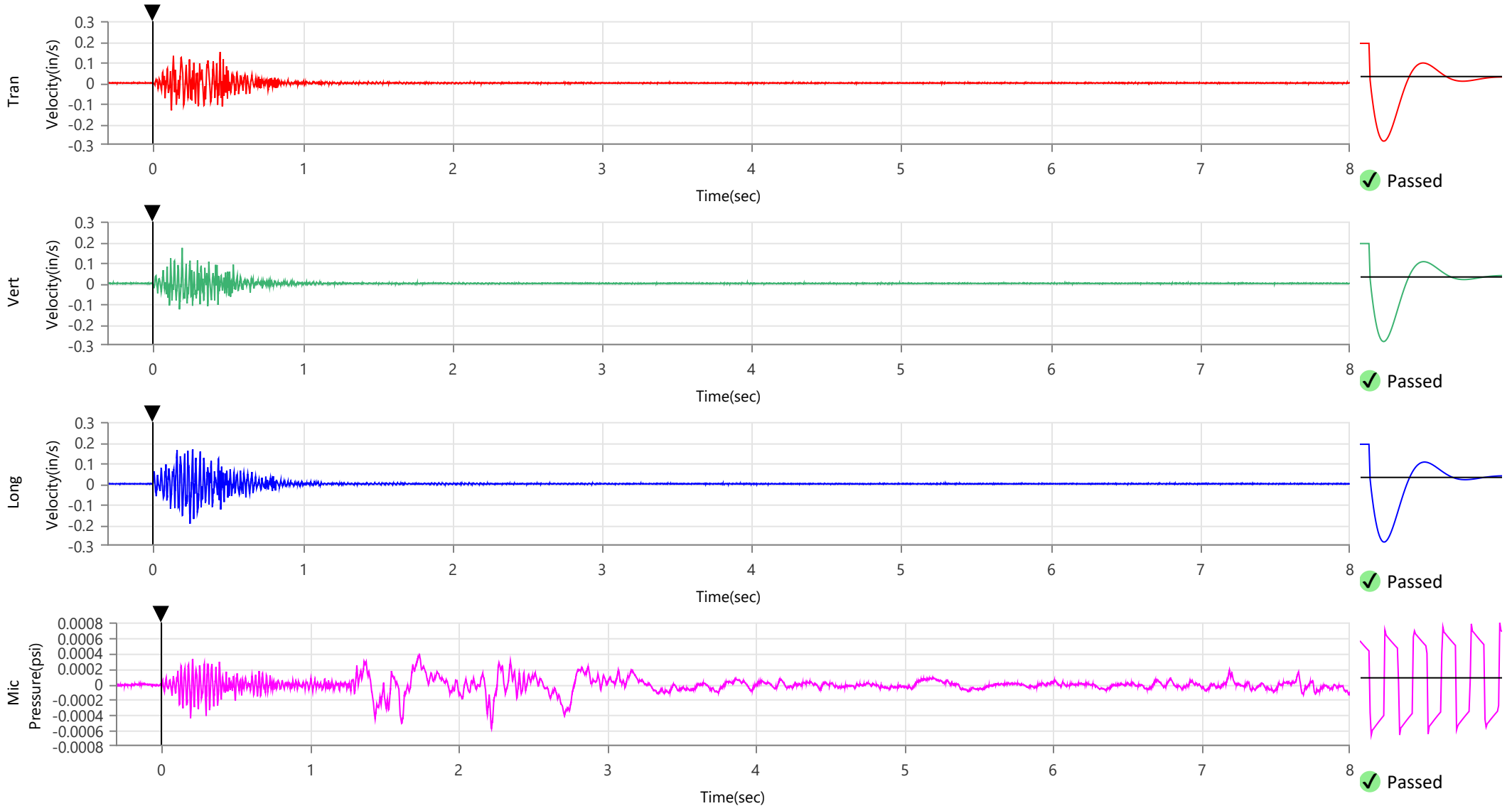
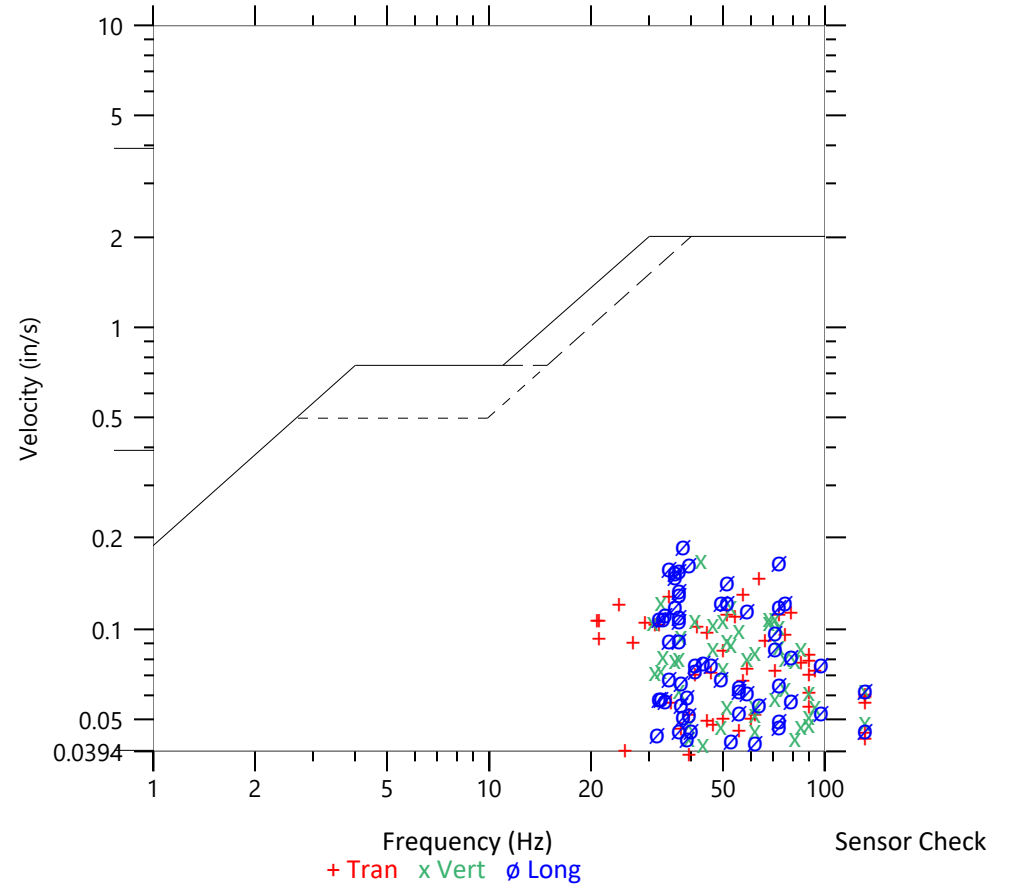
	Tran	Vert	Long
Peak Particle Velocity	0.1505 in/s	0.1722 in/s	0.1936 in/s
Zero Crossing Frequency	64.0 Hz	42.7 Hz	37.9 Hz
Time (Relative to Trigger)	0.446 sec	0.192 sec	0.245 sec
Peak Acceleration	0.178 g	0.151 g	0.217 g
Peak Displacement	0.001 in	0.001 in	0.001 in
Sensor Check	✓ Passed	✓ Passed	✓ Passed
Frequency	7.3 Hz	7.5 Hz	7.3 Hz
Overswing Ratio	4.7	4.2	4.2

Peak Vector Sum 0.2239 in/s at 0.245 sec

**ISEE Linear Microphone**

Peak Sound Pressure Level 0.000574 psi  
 Peak Sound Pressure Level 105.9 dB(L)  
 Time (Relative to Trigger) 2.221 sec  
 Zero Crossing Frequency 6.2 Hz  
 Sensor Check ✓ Passed  
 Frequency 20.5 Hz  
 Test Amplitude 1326 mv

**USBM R18507 And OSMRE**  
 Velocity versus Frequency (Zero Crossing)



**Waveform Trigger Source**  
**Trigger Level(s)**  
**Trigger Level (Mic)**  
**Pre-Trigger/Record Time**  
**Sample Rate**  
**Setup File Name**  
**Operator**

Long at May 14, 2026 13:46:19  
 Geo 0.0200 in/s  
 Mic 0.01029 psi, 131 dB(L)  
 0.31 sec/8.0 sec (Fixed)  
 4096 sps  
 Spicewood Hwy 71 - Station 2.mmb  
 Operator

**Serial Number**  
**Model Number**  
**Battery Level**  
**Unit Calibration**  
**Event File Name**  
**USB Sensor Support**

UM22230  
 Micromate ISEE 11.0CB  
 3.8 volts  
 December 13, 2025 by Instantel  
 UM22230\_20260514134619.IDFW  
 Disabled

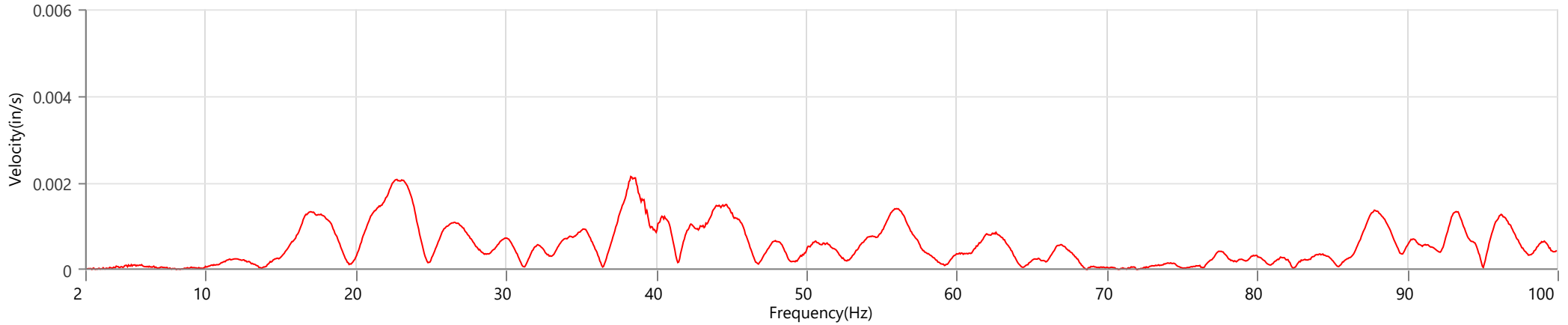
**Notes**

Location Station 2  
 Client Spicewood Crushed Stone  
 Company Hwy 71  
 General Notes IGS, Inc

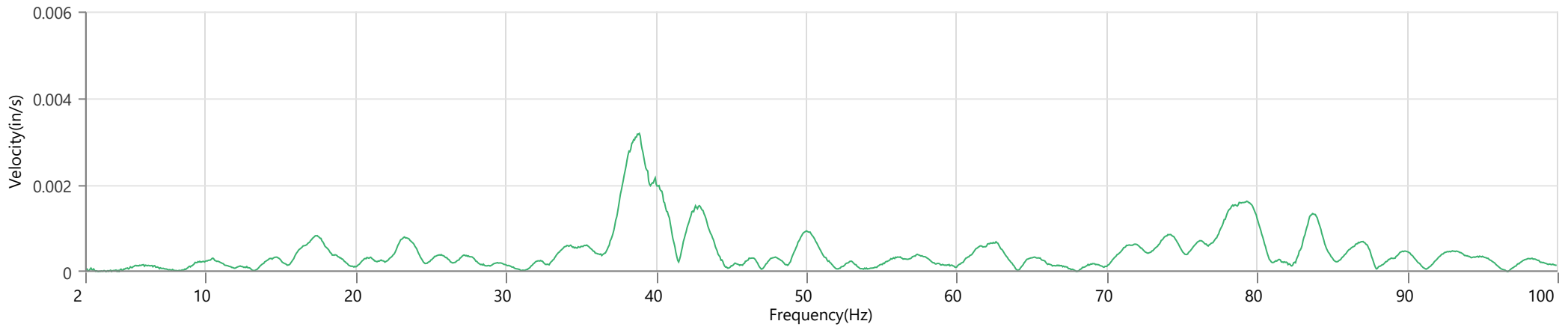
**Extended Note** N30.49650 W-98.21572

**Post Event Notes** No text to be displayed.

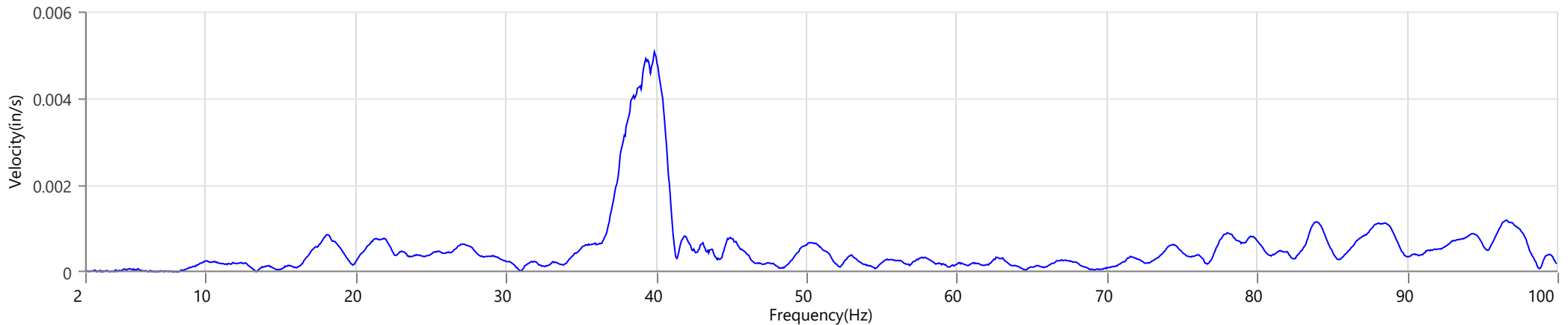
**Tran - Dominant Frequency 38.3 Hz, Amplitude 0.0021 in/s (Peak Particle Velocity: 0.1505 in/s)**



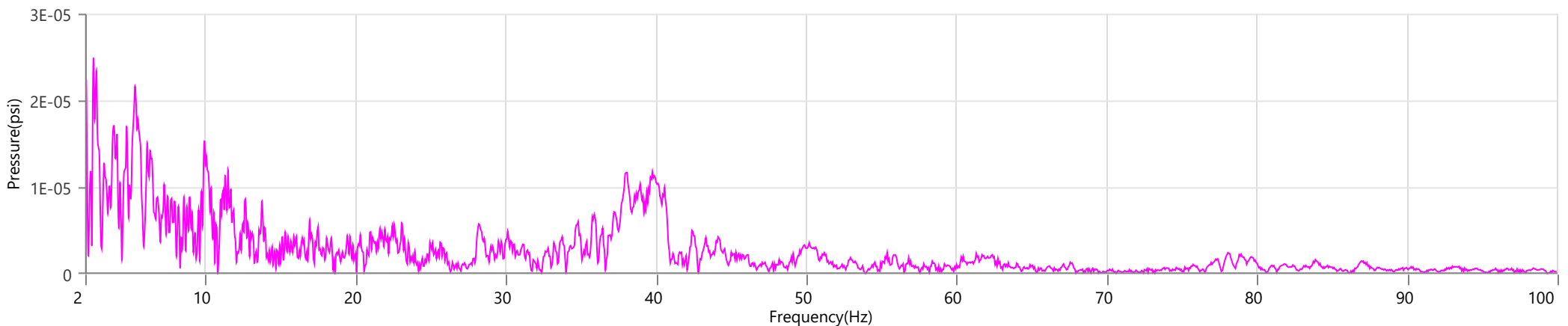
**Vert - Dominant Frequency 38.9 Hz, Amplitude 0.0032 in/s (Peak Particle Velocity: 0.1722 in/s)**



**Long - Dominant Frequency 39.9 Hz, Amplitude 0.0051 in/s (Peak Particle Velocity: 0.1936 in/s)**



**Mic - Dominant Frequency 2.6 Hz, Amplitude 0.00002 psi (Peak Sound Pressure Level: 0.000574 psi)**



**Waveform Trigger Source**  
**Trigger Level(s)**  
**Trigger Level (Mic)**  
**Pre-Trigger/Record Time**  
**Sample Rate**  
**Setup File Name**  
**Operator**

Long at May 14, 2026 13:46:18  
 Geo 0.0200 in/s  
 Mic 0.01029 psi, 131 dB(L)  
 0.50 sec/8.0 sec (Fixed)  
 4096 sps  
 Spicewood Hwy 71 - Station 3.mmb  
 Operator

**Serial Number**  
**Model Number**  
**Battery Level**  
**Unit Calibration**  
**Event File Name**  
**USB Sensor Support**

UM6512  
 Micromate ISEE 11.0CB  
 3.8 volts  
 December 20, 2025 by Instantel  
 UM6512\_20260514134618.IDFW  
 Disabled

**Notes**

Location Station 3  
 Client Spicewood Crushed Stone  
 Company Hwy 71 Quarry  
 General Notes IGS, Inc.

**Extended Note** N30.49742 W98.21566

**Post Event Notes** No text to be displayed.

**Geophone**

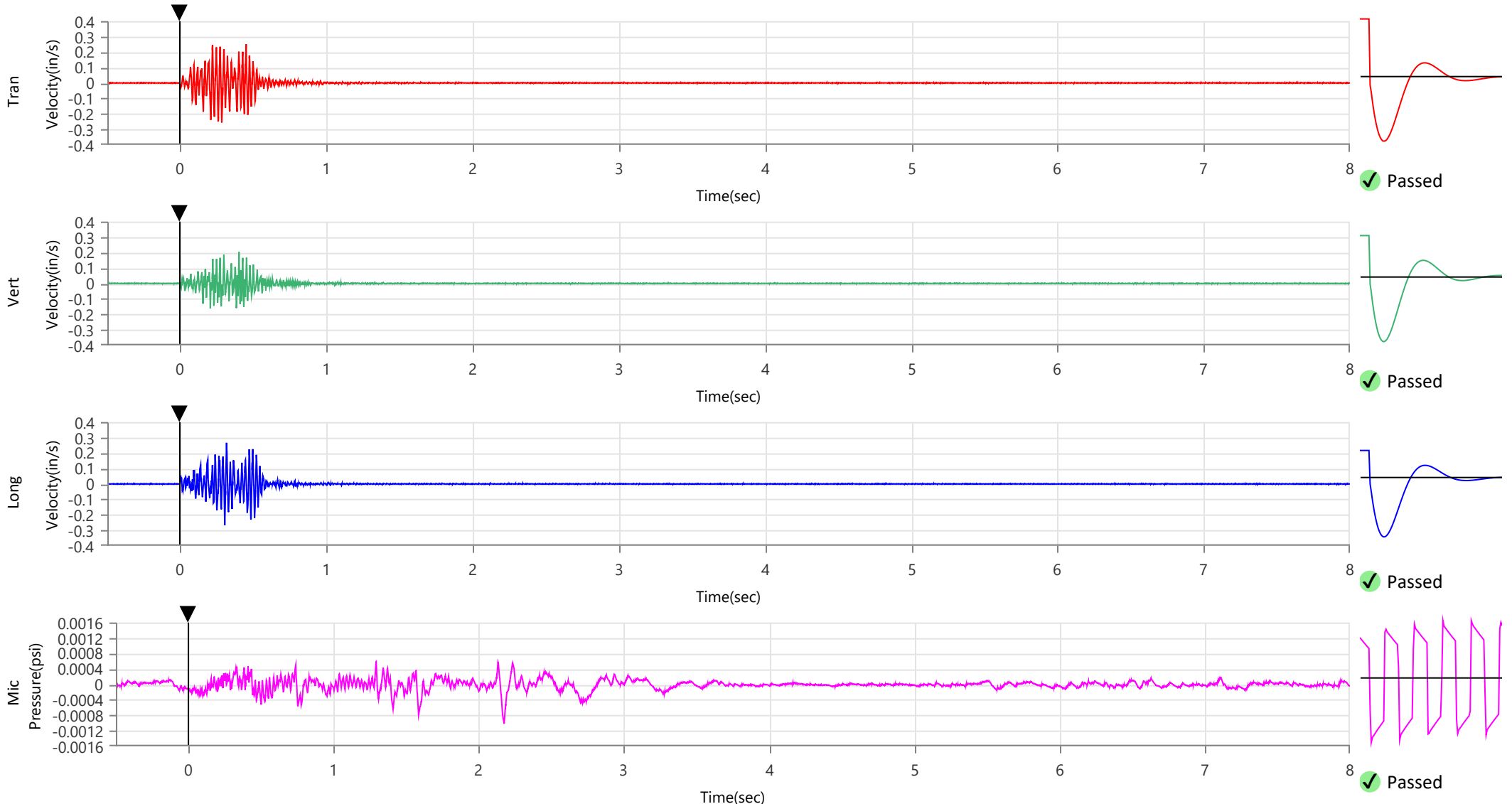
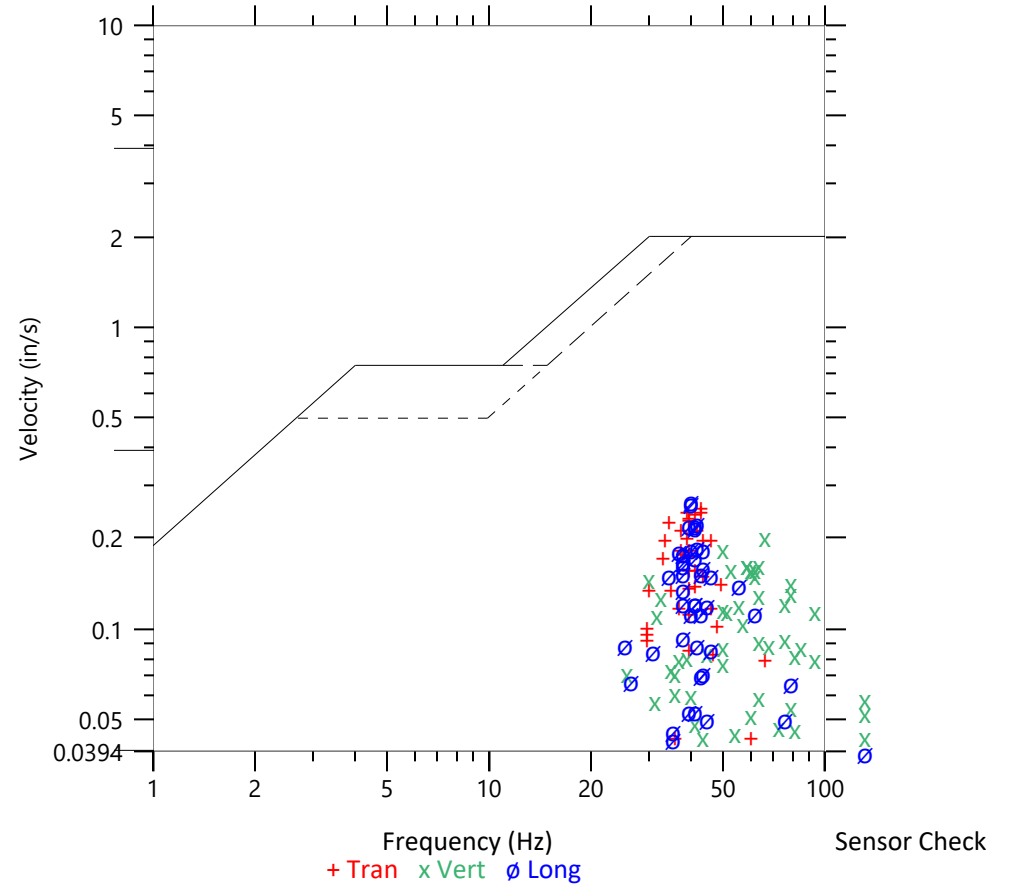
	Tran	Vert	Long
Peak Particle Velocity	0.2560 in/s	0.2033 in/s	0.2678 in/s
Zero Crossing Frequency	42.7 Hz	66.1 Hz	40.2 Hz
Time (Relative to Trigger)	0.283 sec	0.402 sec	0.303 sec
Peak Acceleration	0.270 g	0.201 g	0.220 g
Peak Displacement	0.001 in	0.001 in	0.001 in
Sensor Check	✓ Passed	✓ Passed	✓ Passed
Frequency	7.1 Hz	7.5 Hz	7.1 Hz
Overswing Ratio	4.7	3.8	4.8

Peak Vector Sum 0.3062 in/s at 0.271 sec

**ISEE Linear Microphone**

Peak Sound Pressure Level 0.001008 psi  
 Peak Sound Pressure Level 110.8 dB(L)  
 Time (Relative to Trigger) 2.175 sec  
 Zero Crossing Frequency 8.0 Hz  
 Sensor Check ✓ Passed  
 Frequency 19.7 Hz  
 Test Amplitude 1649 mv

**USBM R18507 And OSMRE**  
 Velocity versus Frequency (Zero Crossing)



**Waveform Trigger Source**  
**Trigger Level(s)**  
**Trigger Level (Mic)**  
**Pre-Trigger/Record Time**  
**Sample Rate**  
**Setup File Name**  
**Operator**

Long at May 14, 2026 13:46:18  
 Geo 0.0200 in/s  
 Mic 0.01029 psi, 131 dB(L)  
 0.50 sec/8.0 sec (Fixed)  
 4096 sps  
 Spicewood Hwy 71 - Station 3.mmb  
 Operator

**Serial Number**  
**Model Number**  
**Battery Level**  
**Unit Calibration**  
**Event File Name**  
**USB Sensor Support**

UM6512  
 Micromate ISEE 11.0CB  
 3.8 volts  
 December 20, 2025 by Instantel  
 UM6512\_20260514134618.IDFW  
 Disabled

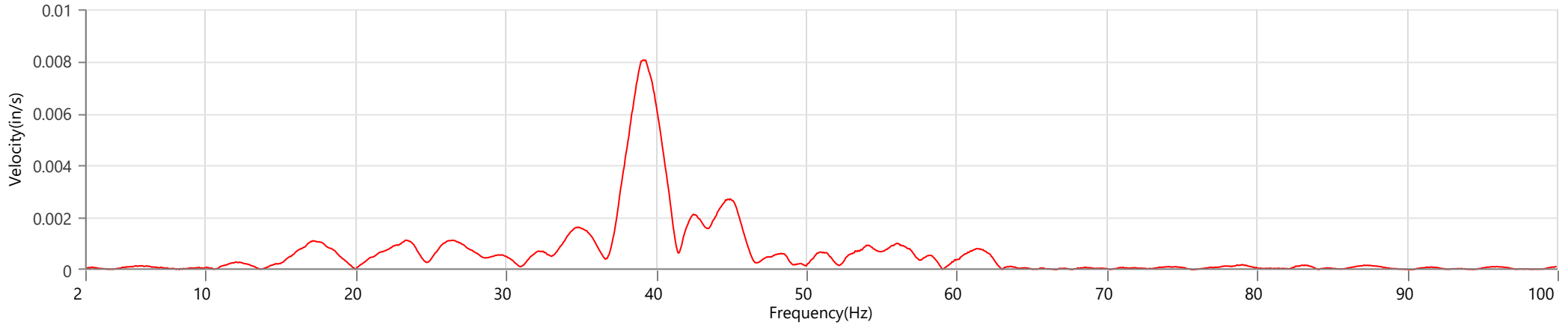
**Notes**

Location Station 3  
 Client Spicewood Crushed Stone  
 Company Hwy 71 Quarry  
 General Notes IGS, Inc.

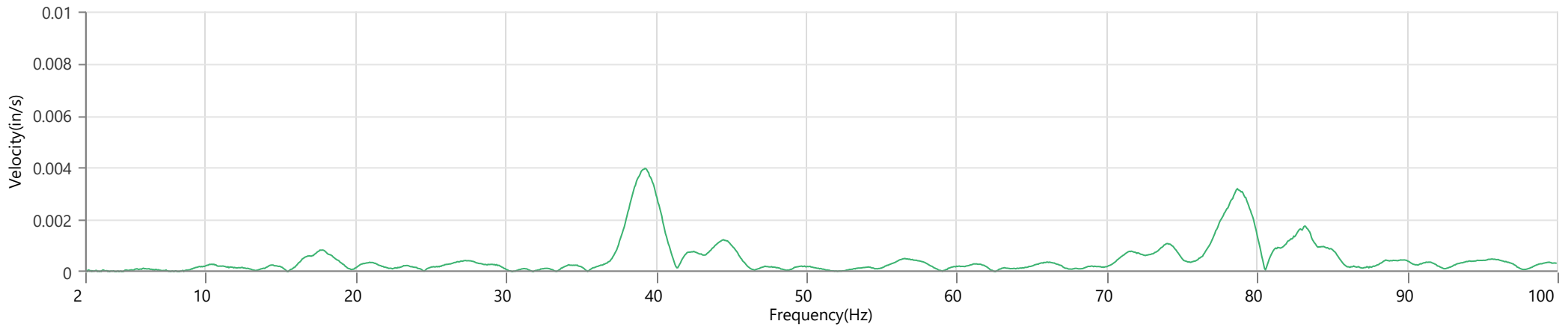
**Extended Note** N30.49742 W98.21566

**Post Event Notes** No text to be displayed.

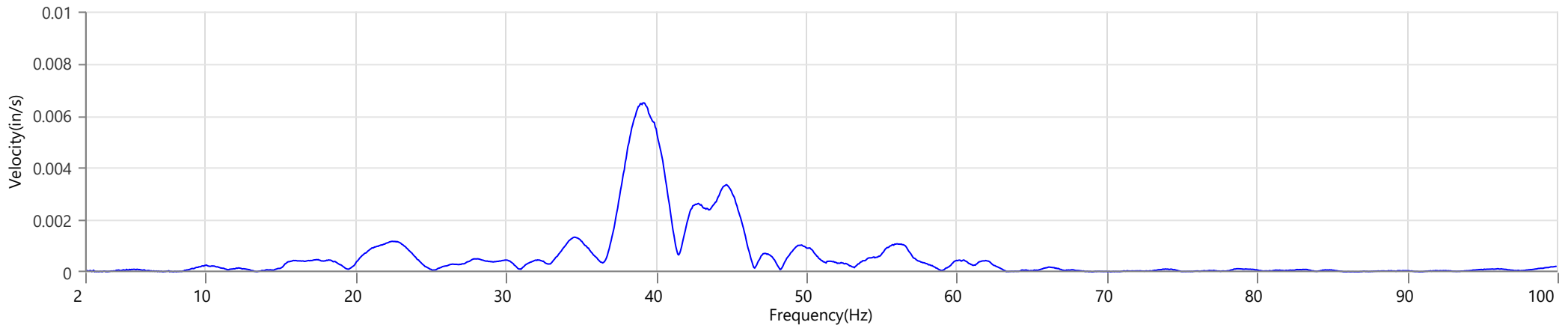
**Tran - Dominant Frequency 39.2 Hz, Amplitude 0.0081 in/s (Peak Particle Velocity: 0.2560 in/s)**



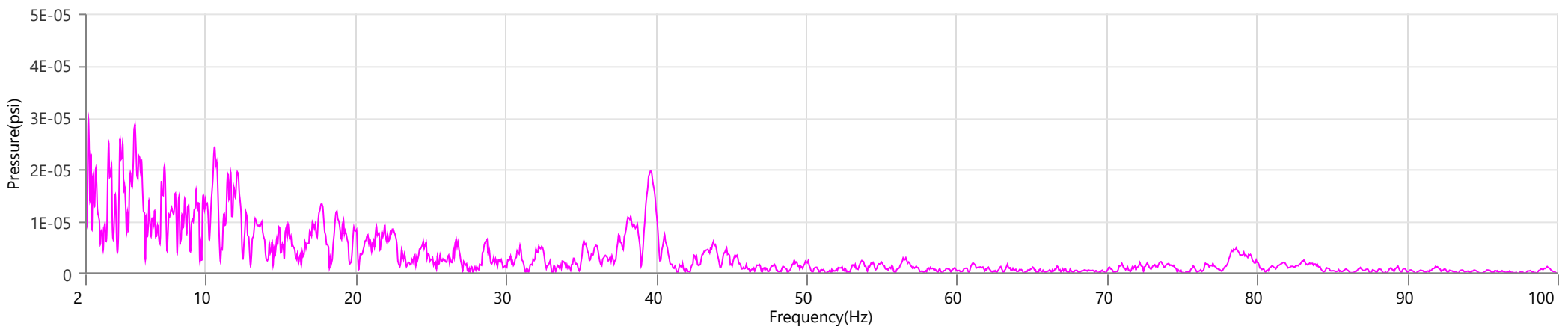
**Vert - Dominant Frequency 39.2 Hz, Amplitude 0.0040 in/s (Peak Particle Velocity: 0.2033 in/s)**



**Long - Dominant Frequency 39.2 Hz, Amplitude 0.0065 in/s (Peak Particle Velocity: 0.2678 in/s)**



**Mic - Dominant Frequency 2.2 Hz, Amplitude 0.00003 psi (Peak Sound Pressure Level: 0.001008 psi)**



**Waveform Trigger Source**  
**Trigger Level(s)**  
**Trigger Level (Mic)**  
**Pre-Trigger/Record Time**  
**Sample Rate**  
**Setup File Name**  
**Operator**

Vert at May 14, 2026 13:46:20  
 Geo 0.0200 in/s  
 Mic 0.01029 psi, 131 dB(L)  
 0.50 sec/8.0 sec (Fixed)  
 4096 sps  
 Spicewood Hwy 71 - Station 4.mmb  
 Operator

**Serial Number**  
**Model Number**  
**Battery Level**  
**Unit Calibration**  
**Event File Name**  
**USB Sensor Support**

UM21515  
 Micromate ISEE 11.0CB  
 3.8 volts  
 December 23, 2025 by Instantel  
 UM21515\_20260514134620.IDFW  
 Disabled

**Notes**

Location Station 4  
 Client Spicewood Crushed Stone  
 Company Hwy 71 Quarry  
 General Notes IGS, Inc.

**Extended Note** N30.49821 W98.21578

**Post Event Notes** No text to be displayed.

**Geophone**

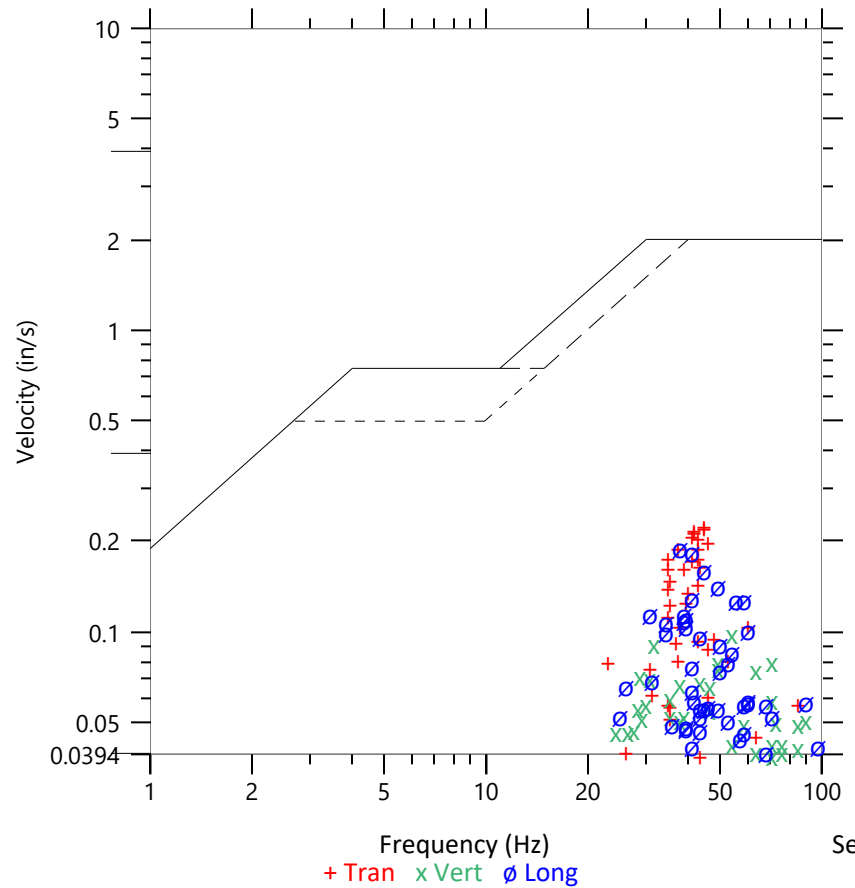
	Tran	Vert	Long
Peak Particle Velocity	0.2290 in/s	0.0993 in/s	0.1911 in/s
Zero Crossing Frequency	44.5 Hz	53.9 Hz	37.9 Hz
Time (Relative to Trigger)	0.492 sec	0.386 sec	0.249 sec
Peak Acceleration	0.214 g	0.109 g	0.151 g
Peak Displacement	0.001 in	0.000 in	0.001 in
Sensor Check	✓ Passed	✓ Passed	✓ Passed
Frequency	7.3 Hz	7.5 Hz	7.3 Hz
Overswing Ratio	4.6	4.4	4.2

Peak Vector Sum 0.2455 in/s at 0.252 sec

**ISEE Linear Microphone**

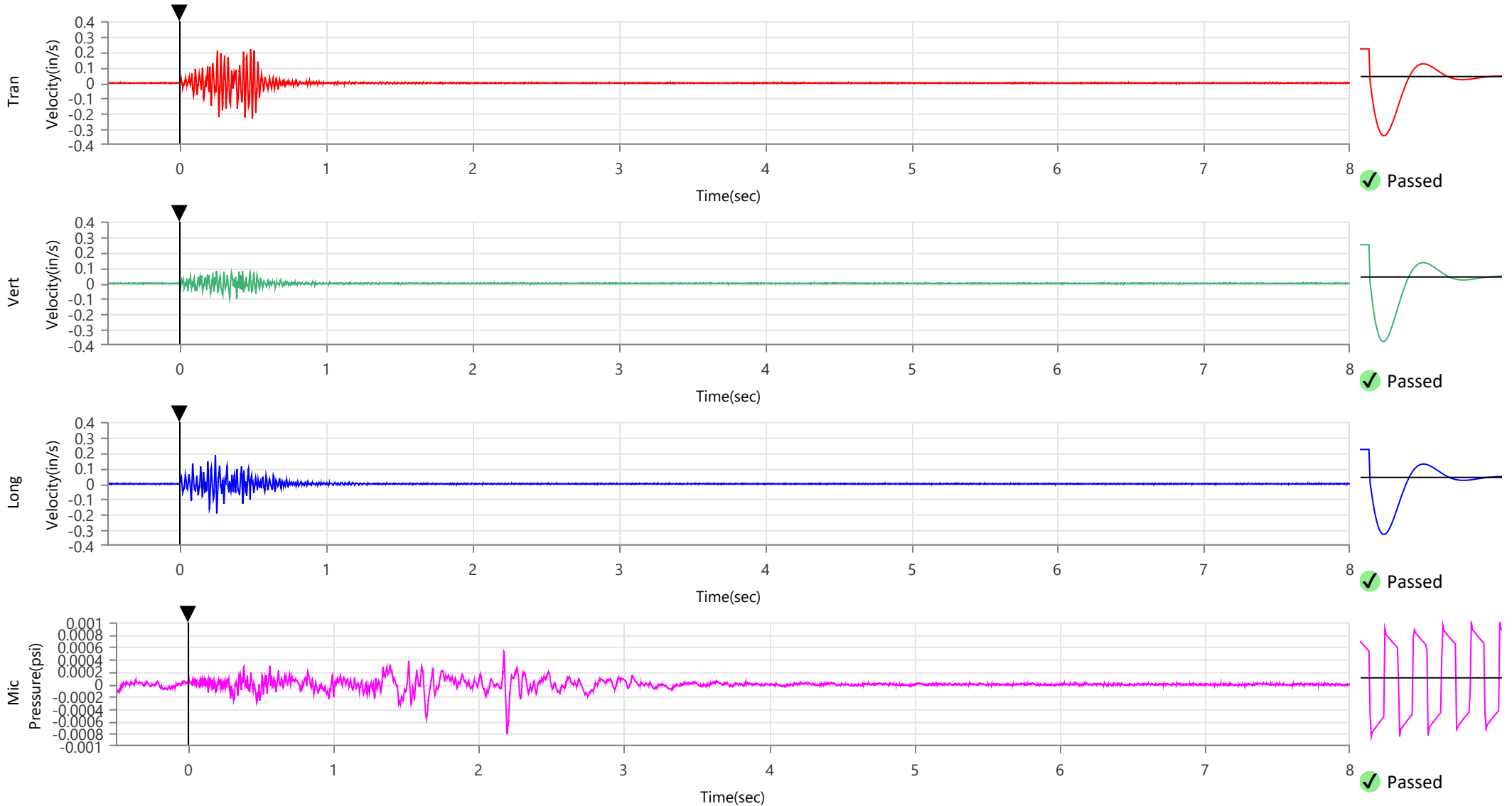
Peak Sound Pressure Level	0.000801 psi
Peak Sound Pressure Level	108.8 dB(L)
Time (Relative to Trigger)	2.196 sec
Zero Crossing Frequency	13.7 Hz
Sensor Check	✓ Passed
Frequency	20.5 Hz
Test Amplitude	1359 mv

**USBM RI8507 And OSMRE**  
 Velocity versus Frequency (Zero Crossing)



Sensor Check

+ Tran x Vert o Long



**Waveform Trigger Source**  
**Trigger Level(s)**  
**Trigger Level (Mic)**  
**Pre-Trigger/Record Time**  
**Sample Rate**  
**Setup File Name**  
**Operator**

Vert at May 14, 2026 13:46:20  
 Geo 0.0200 in/s  
 Mic 0.01029 psi, 131 dB(L)  
 0.50 sec/8.0 sec (Fixed)  
 4096 sps  
 Spicewood Hwy 71 - Station 4.mmb  
 Operator

**Serial Number**  
**Model Number**  
**Battery Level**  
**Unit Calibration**  
**Event File Name**  
**USB Sensor Support**

UM21515  
 Micromate ISEE 11.0CB  
 3.8 volts  
 December 23, 2025 by Instantel  
 UM21515\_20260514134620.IDFW  
 Disabled

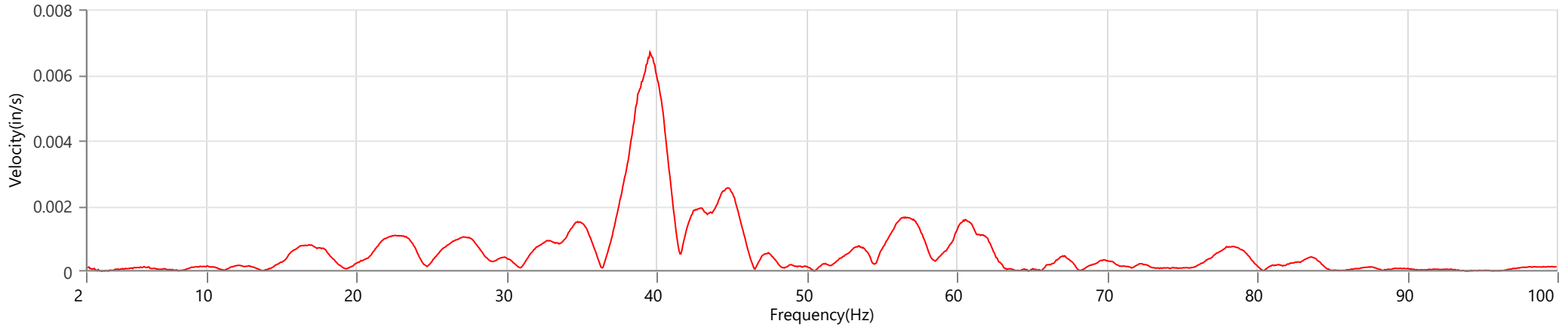
**Notes**

Location Station 4  
 Client Spicewood Crushed Stone  
 Company Hwy 71 Quarry  
 General Notes IGS, Inc.

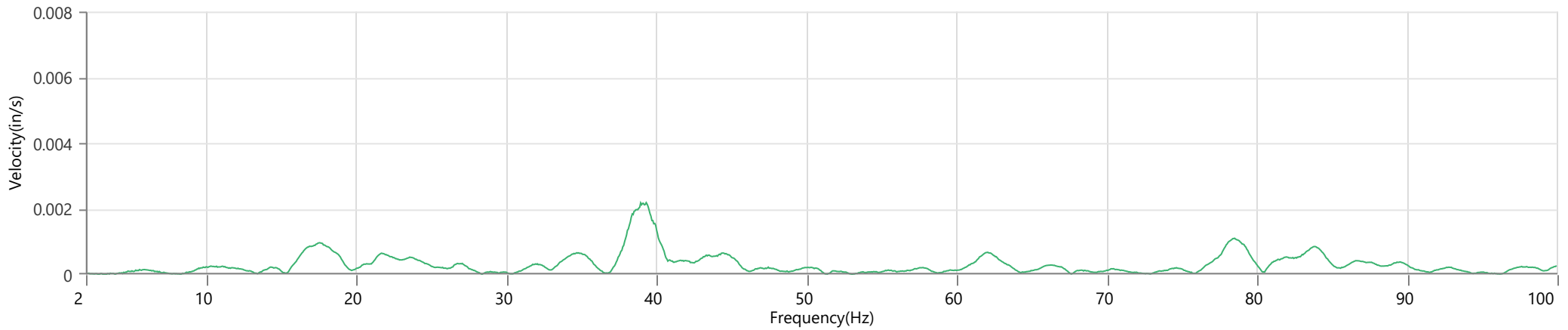
**Extended Note** N30.49821 W98.21578

**Post Event Notes** No text to be displayed.

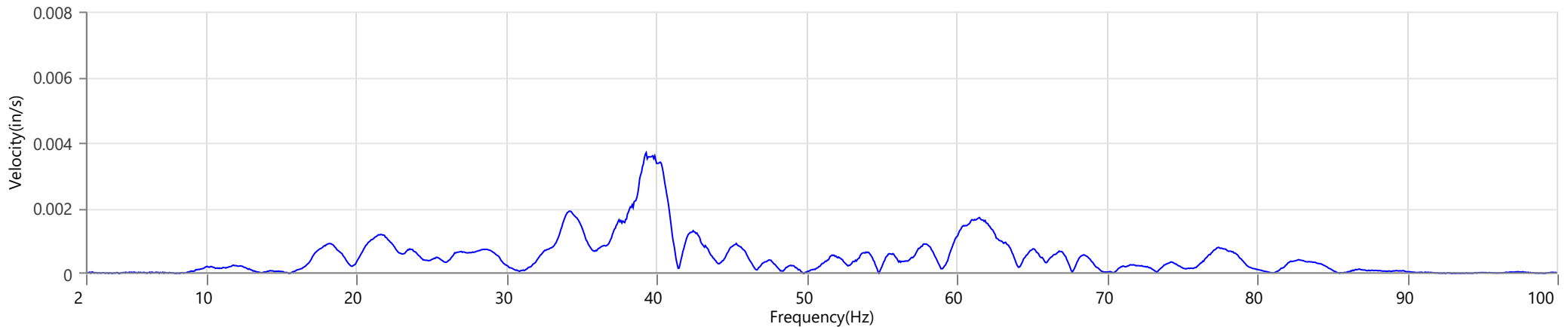
**Tran - Dominant Frequency 39.6 Hz, Amplitude 0.0067 in/s (Peak Particle Velocity: 0.2290 in/s)**



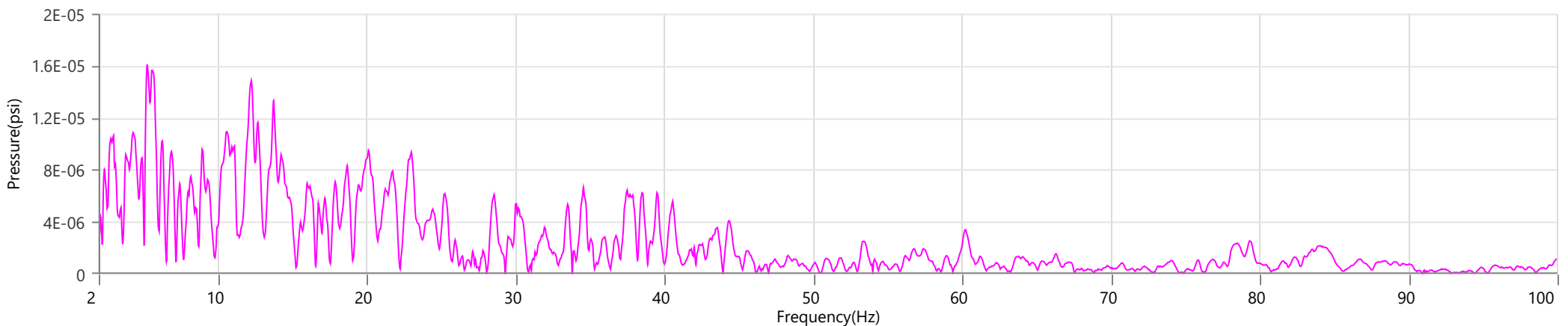
**Vert - Dominant Frequency 39.3 Hz, Amplitude 0.0022 in/s (Peak Particle Velocity: 0.0993 in/s)**



**Long - Dominant Frequency 39.3 Hz, Amplitude 0.0037 in/s (Peak Particle Velocity: 0.1911 in/s)**



**Mic - Dominant Frequency 5.2 Hz, Amplitude 0.00002 psi (Peak Sound Pressure Level: 0.000801 psi)**



**Waveform Trigger Source**  
**Trigger Level(s)**  
**Trigger Level (Mic)**  
**Pre-Trigger/Record Time**  
**Sample Rate**  
**Setup File Name**  
**Operator**

Vert at May 14, 2026 13:46:18  
 Geo 0.0200 in/s  
 Mic 0.01029 psi, 131 dB(L)  
 0.50 sec/8.0 sec (Fixed)  
 4096 sps  
 Spicewood Hwy 71 - Station 5.mmb  
 Operator

**Serial Number**  
**Model Number**  
**Battery Level**  
**Unit Calibration**  
**Event File Name**  
**USB Sensor Support**

UM6323  
 Micromate ISEE 11.0CB  
 3.8 volts  
 January 6, 2026 by InstanTEL  
 UM6323\_20260514134618.IDFW  
 Disabled

**Notes**

Location Station 5  
 Client Spicewood Crushed Stone  
 Company Hwy 71 Quarry  
 General Notes IGS, Inc.

**Extended Note** N30.49911 W98.21538

**Post Event Notes** No text to be displayed.

**Geophone**

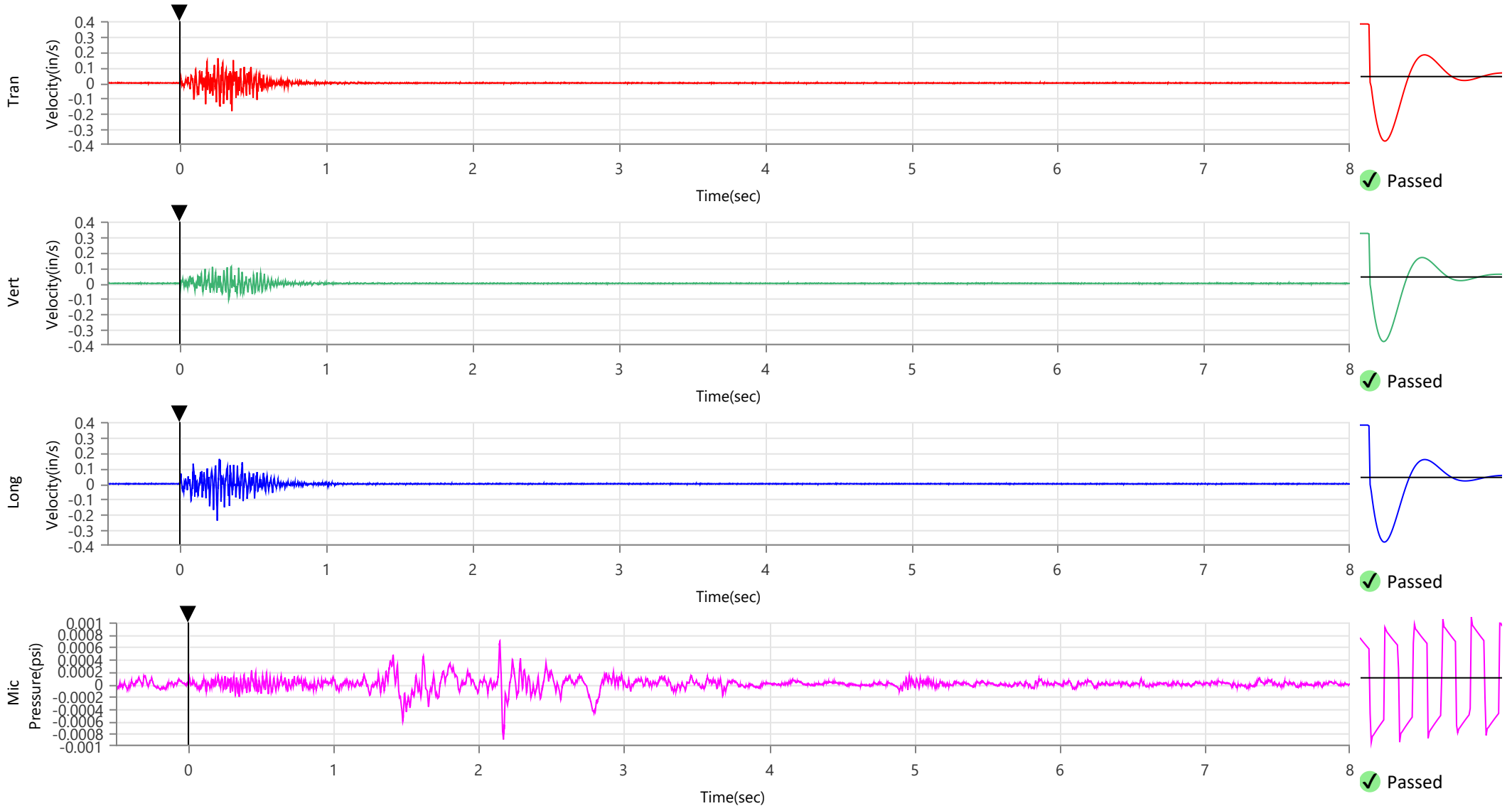
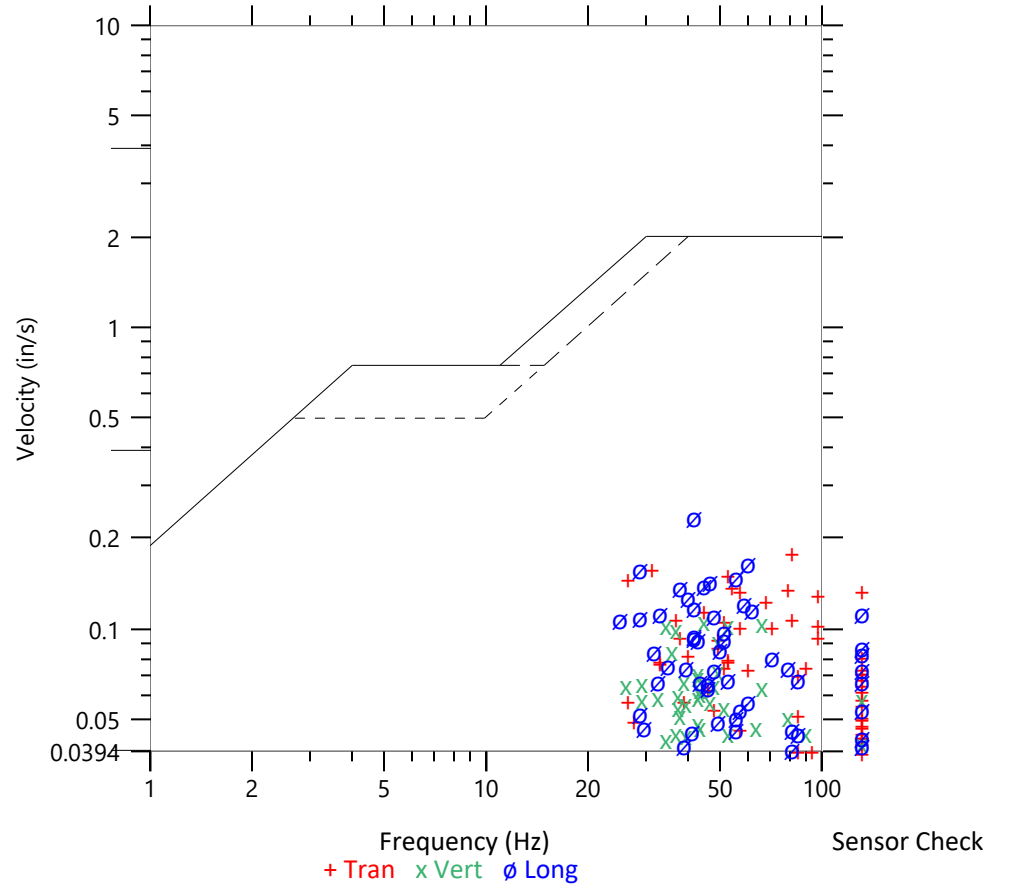
	Tran	Vert	Long
Peak Particle Velocity	0.1822 in/s	0.1071 in/s	0.2380 in/s
Zero Crossing Frequency	81.9 Hz	44.5 Hz	41.8 Hz
Time (Relative to Trigger)	0.353 sec	0.348 sec	0.252 sec
Peak Acceleration	0.247 g	0.125 g	0.220 g
Peak Displacement	0.001 in	0.000 in	0.001 in
Sensor Check	✓ Passed	✓ Passed	✓ Passed
Frequency	7.5 Hz	7.7 Hz	7.3 Hz
Overswing Ratio	2.9	3.3	3.6

Peak Vector Sum 0.2404 in/s at 0.253 sec

**ISEE Linear Microphone**

Peak Sound Pressure Level 0.000893 psi  
 Peak Sound Pressure Level 109.8 dB(L)  
 Time (Relative to Trigger) 2.170 sec  
 Zero Crossing Frequency 8.6 Hz  
 Sensor Check ✓ Passed  
 Frequency 19.7 Hz  
 Test Amplitude 1269 mv

**USBM R18507 And OSMRE**  
Velocity versus Frequency (Zero Crossing)



**Waveform Trigger Source**  
**Trigger Level(s)**  
**Trigger Level (Mic)**  
**Pre-Trigger/Record Time**  
**Sample Rate**  
**Setup File Name**  
**Operator**

Vert at May 14, 2026 13:46:18  
 Geo 0.0200 in/s  
 Mic 0.01029 psi, 131 dB(L)  
 0.50 sec/8.0 sec (Fixed)  
 4096 sps  
 Spicewood Hwy 71 - Station 5.mmb  
 Operator

**Serial Number**  
**Model Number**  
**Battery Level**  
**Unit Calibration**  
**Event File Name**  
**USB Sensor Support**

UM6323  
 Micromate ISEE 11.0CB  
 3.8 volts  
 January 6, 2026 by Instantel  
 UM6323\_20260514134618.IDFW  
 Disabled

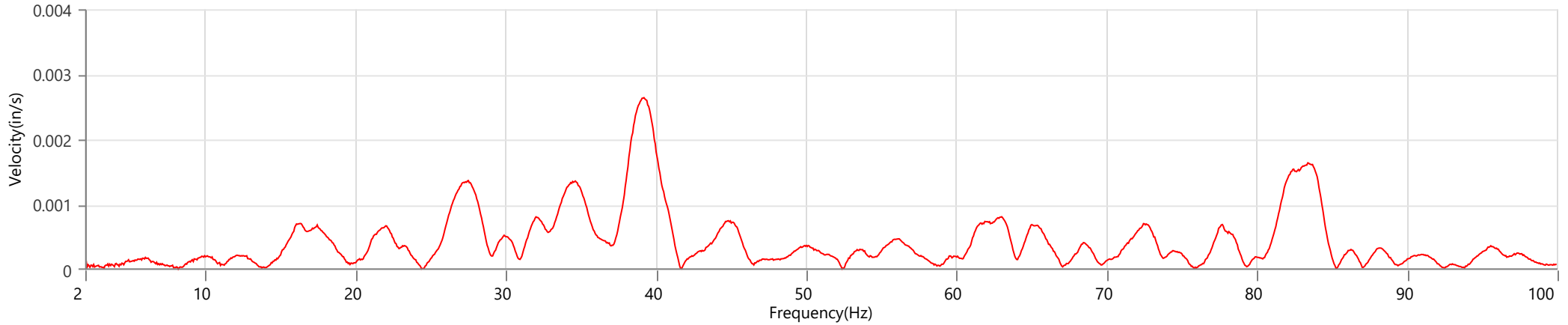
**Notes**

Location Station 5  
 Client Spicewood Crushed Stone  
 Company Hwy 71 Quarry  
 General Notes IGS, Inc.

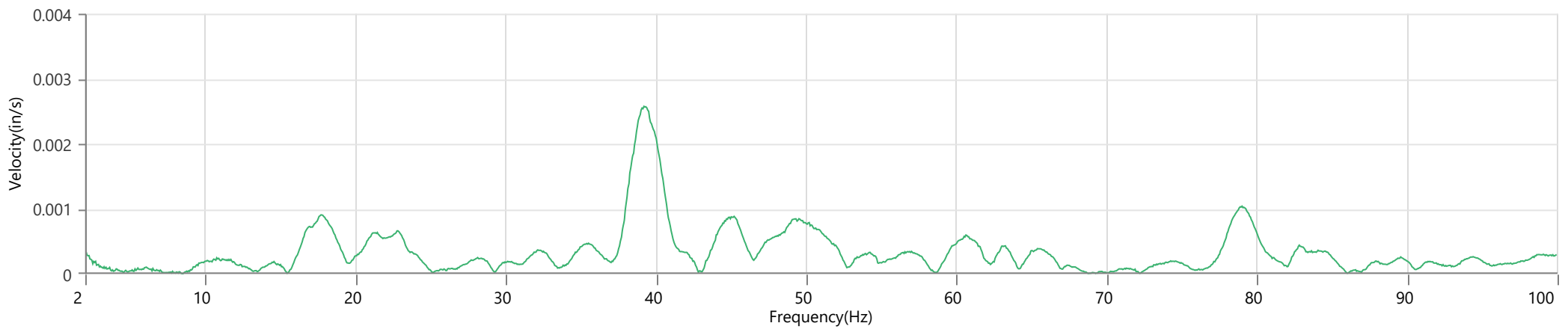
**Extended Note** N30.49911 W98.21538

**Post Event Notes** No text to be displayed.

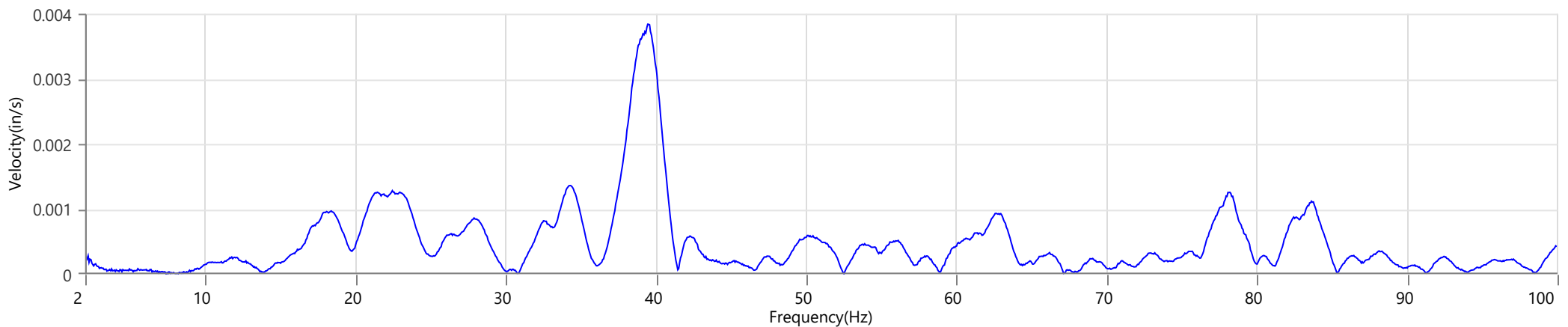
**Tran - Dominant Frequency 39.2 Hz, Amplitude 0.0026 in/s (Peak Particle Velocity: 0.1822 in/s)**



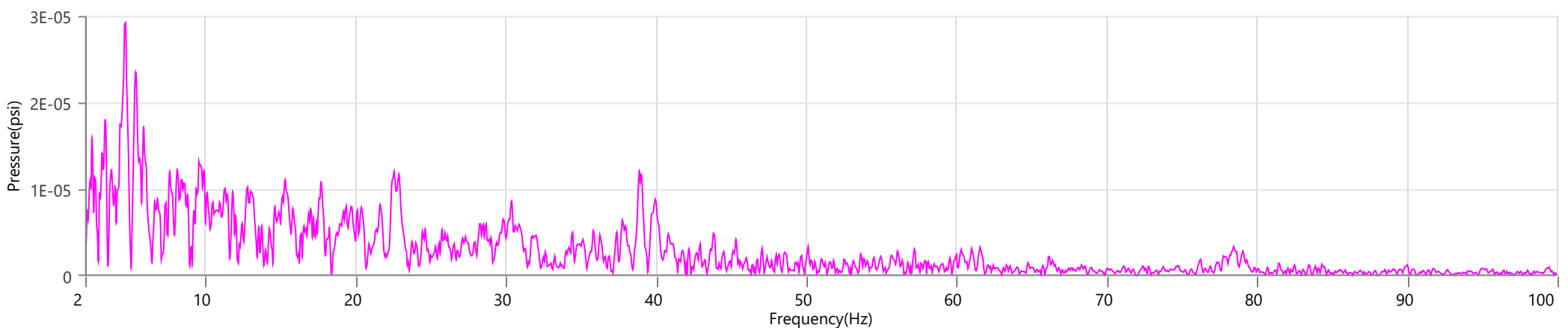
**Vert - Dominant Frequency 39.2 Hz, Amplitude 0.0026 in/s (Peak Particle Velocity: 0.1071 in/s)**



**Long - Dominant Frequency 39.4 Hz, Amplitude 0.0038 in/s (Peak Particle Velocity: 0.2380 in/s)**



**Mic - Dominant Frequency 4.7 Hz, Amplitude 0.00003 psi (Peak Sound Pressure Level: 0.000893 psi)**



**Waveform Trigger Source**  
**Trigger Level(s)**  
**Trigger Level (Mic)**  
**Pre-Trigger/Record Time**  
**Sample Rate**  
**Setup File Name**  
**Operator**

Vert at May 14, 2026 13:46:18  
 Geo 0.0200 in/s  
 Mic 0.01029 psi, 131 dB(L)  
 0.50 sec/8.0 sec (Fixed)  
 4096 sps  
 Spicewood Hwy 71 - Station 6.mmb  
 Operator

**Serial Number**  
**Model Number**  
**Battery Level**  
**Unit Calibration**  
**Event File Name**  
**USB Sensor Support**

UM21525  
 Micromate ISEE 11.0CB  
 3.8 volts  
 April 6, 2026 by Instantel  
 UM21525\_20260514134618.IDFW  
 Disabled

**Notes**

Location Station 6  
 Client Spicewood Crushed Stone  
 Company Hwy 71 Quarry  
 General Notes IGS, Inc.

**Extended Note** N30.495113 W98.206539

**Post Event Notes** No text to be displayed.

**Geophone**

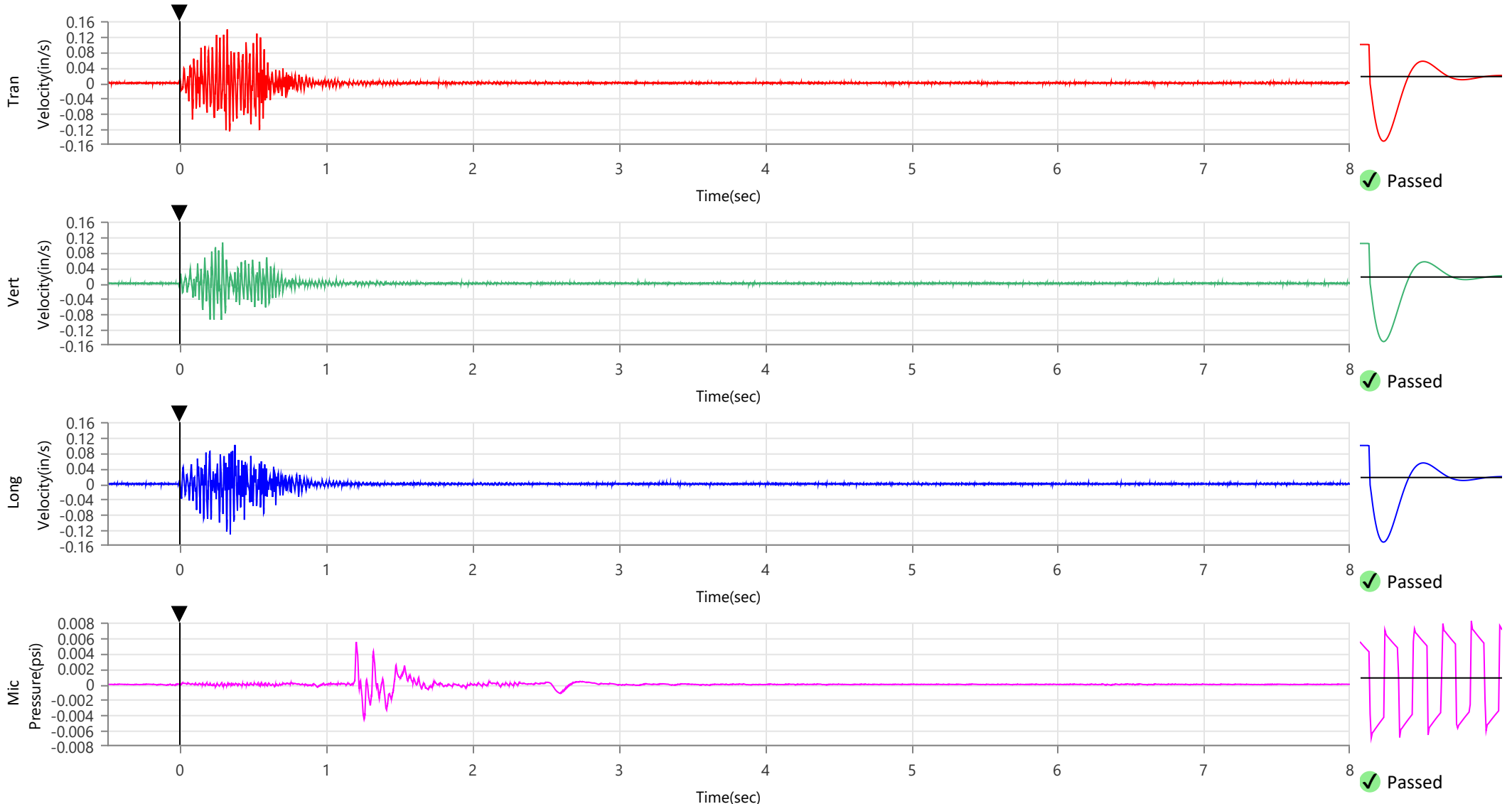
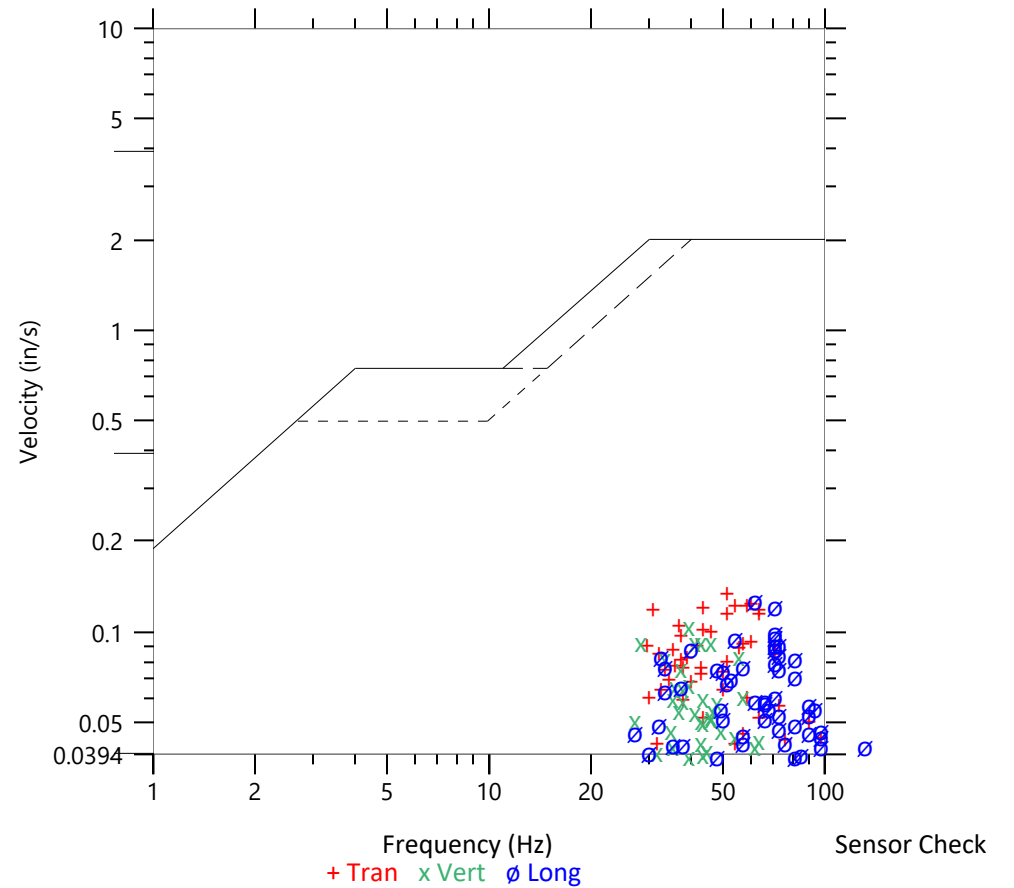
	Tran	Vert	Long
Peak Particle Velocity	0.1384 in/s	0.1061 in/s	0.1303 in/s
Zero Crossing Frequency	52.5 Hz	39.4 Hz	62.1 Hz
Time (Relative to Trigger)	0.321 sec	0.289 sec	0.342 sec
Peak Acceleration	0.148 g	0.105 g	0.145 g
Peak Displacement	0.001 in	0.000 in	0.000 in
Sensor Check	✓ Passed	✓ Passed	✓ Passed
Frequency	7.5 Hz	7.3 Hz	7.3 Hz
Overswing Ratio	4.2	4.2	4.4

Peak Vector Sum 0.1407 in/s at 0.318 sec

**ISEE Linear Microphone**

Peak Sound Pressure Level 0.005493 psi  
 Peak Sound Pressure Level 125.5 dB(L)  
 Time (Relative to Trigger) 1.204 sec  
 Zero Crossing Frequency 10.1 Hz  
 Sensor Check ✓ Passed  
 Frequency 19.7 Hz  
 Test Amplitude 1355 mv

**USBM R18507 And OSMRE**  
Velocity versus Frequency (Zero Crossing)



**Waveform Trigger Source**  
**Trigger Level(s)**  
**Trigger Level (Mic)**  
**Pre-Trigger/Record Time**  
**Sample Rate**  
**Setup File Name**  
**Operator**

Vert at May 14, 2026 13:46:18  
 Geo 0.0200 in/s  
 Mic 0.01029 psi, 131 dB(L)  
 0.50 sec/8.0 sec (Fixed)  
 4096 sps  
 Spicewood Hwy 71 - Station 6.mmb  
 Operator

**Serial Number**  
**Model Number**  
**Battery Level**  
**Unit Calibration**  
**Event File Name**  
**USB Sensor Support**

UM21525  
 Micromate ISEE 11.0CB  
 3.8 volts  
 April 6, 2026 by Instantel  
 UM21525\_20260514134618.IDFW  
 Disabled

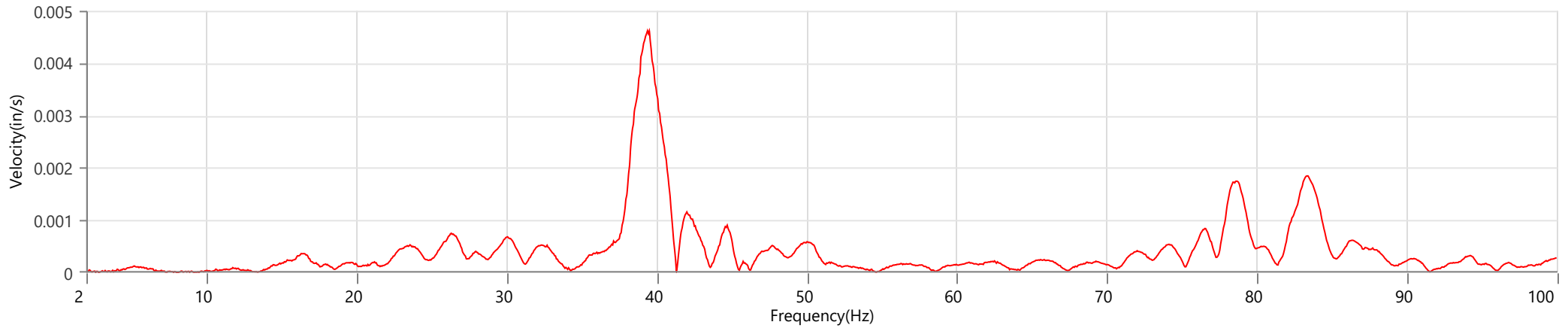
**Notes**

Location Station 6  
 Client Spicewood Crushed Stone  
 Company Hwy 71 Quarry  
 General Notes IGS, Inc.

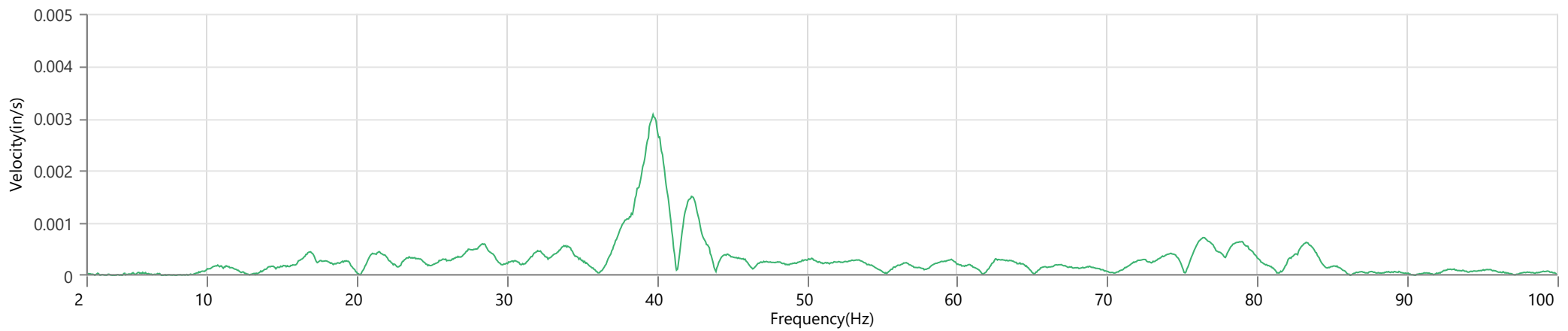
**Extended Note** N30.495113 W98.206539

**Post Event Notes** No text to be displayed.

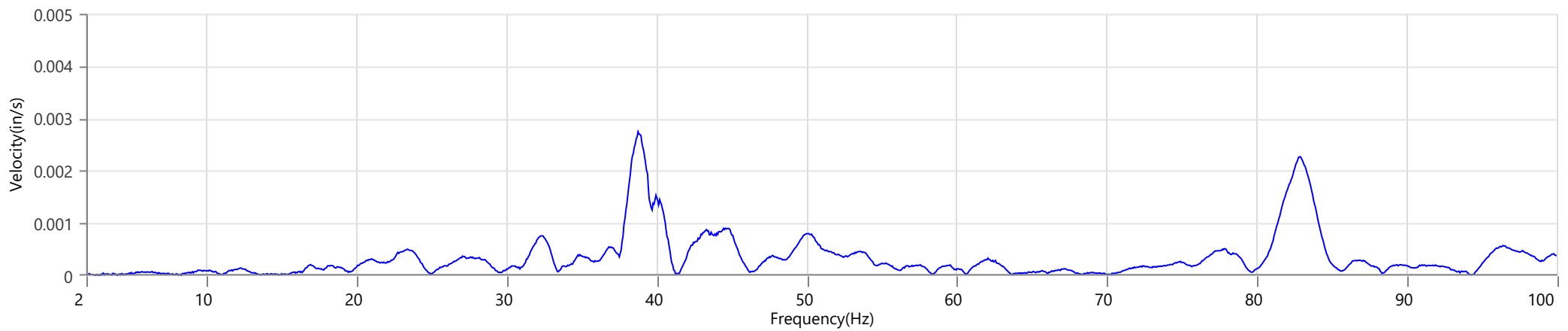
**Tran - Dominant Frequency 39.4 Hz, Amplitude 0.0046 in/s (Peak Particle Velocity: 0.1384 in/s)**



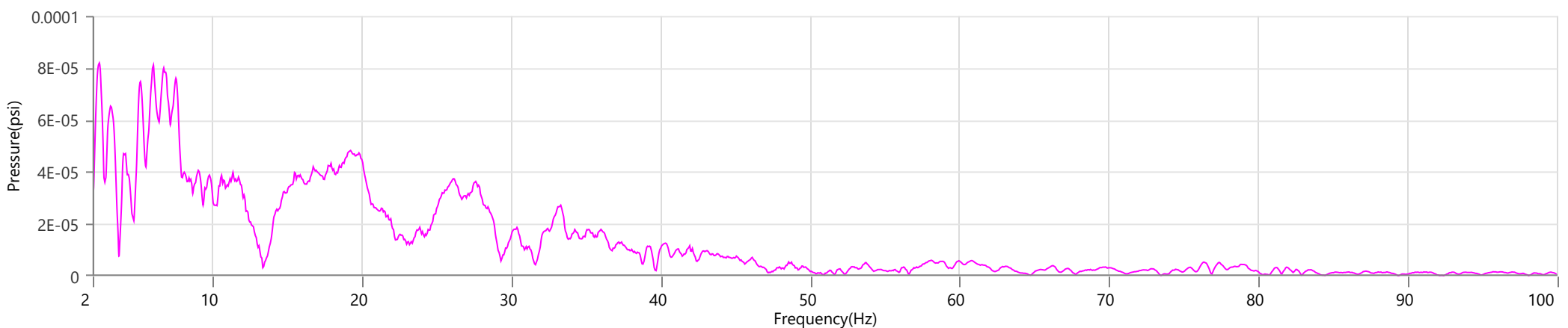
**Vert - Dominant Frequency 39.8 Hz, Amplitude 0.0031 in/s (Peak Particle Velocity: 0.1061 in/s)**



**Long - Dominant Frequency 38.8 Hz, Amplitude 0.0027 in/s (Peak Particle Velocity: 0.1303 in/s)**



**Mic - Dominant Frequency 2.4 Hz, Amplitude 0.00008 psi (Peak Sound Pressure Level: 0.005493 psi)**



**Start** May 14, 2026 00:00:05  
**Finish** May 14, 2026 23:29:59  
**Number of Intervals/Interval** 1409.91/60 sec  
**Sample Rate** 4096 sps  
**Setup File Name** Spicewood Hwy 71 - Noise 2.mmb  
**Operator** Operator

**Serial Number** UM21399  
**Model Number** Micromate ISEE 11.0CB  
**Battery Level** 3.8 volts  
**Unit Calibration** March 25, 2026 by Instantel  
**Event File Name** UM21399\_20260514000005.IDFH  
**USB Sensor Support** Disabled

**Notes**  
**Location** Noise 2  
**Client** Spicewood Crushed Stone  
**Company** Hwy 71 Quarry  
**General Notes** IGS, Inc.

**Extended Note** Station 5N30.49911 W98.21538

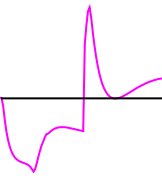
**Post Event Notes** No text to be displayed.

**Sound Level Microphone**

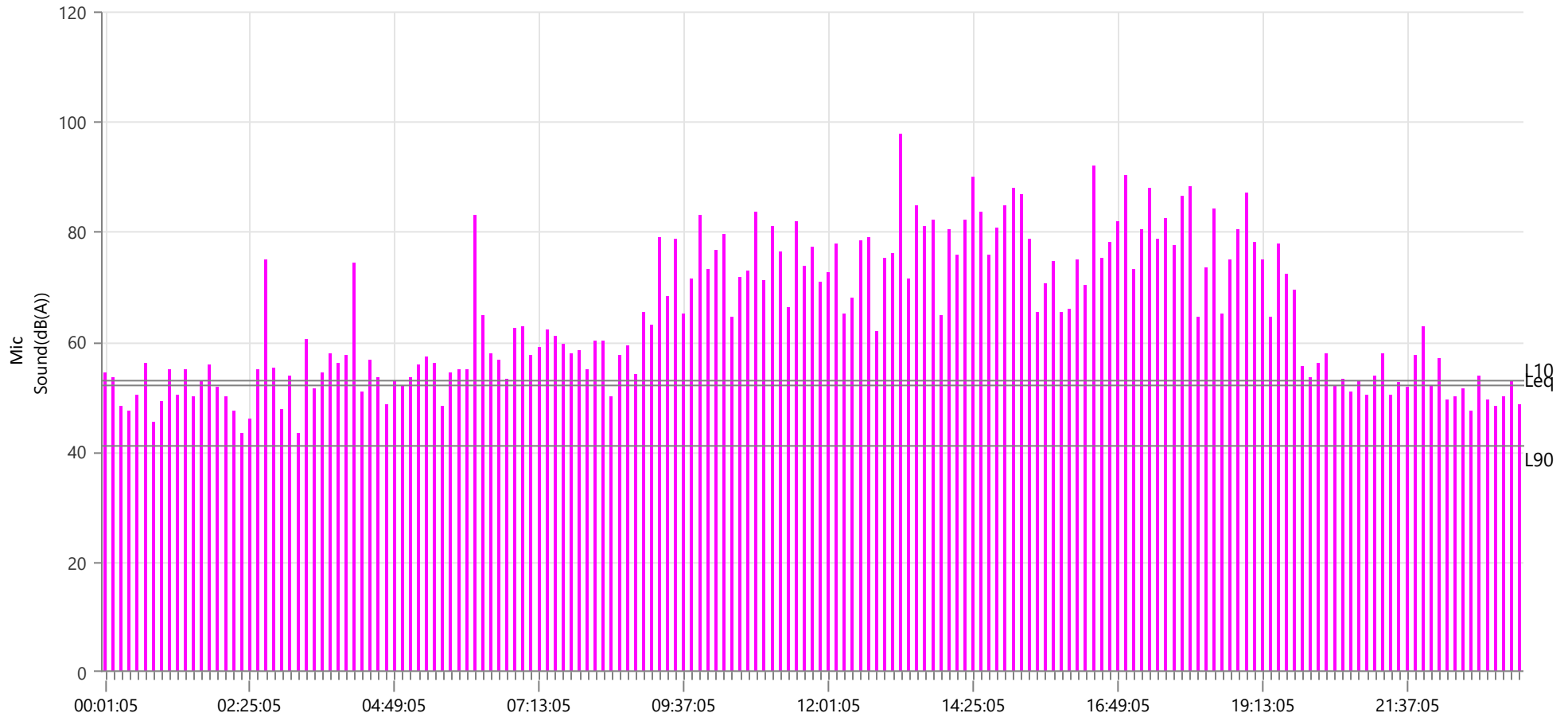
**LMax** 97.6 dB(A)  
**Date** May 14, 2026  
**Time** 13:13:05

	<b>LMin</b>	<b>L10</b>	<b>L90</b>	<b>Leq</b>
Sound(dB(A))	36.3	52	41	52.8
Sensor Check	✓ Passed			
Test Amplitude	1108 mv			

**Sensor Check**



✓ Passed



**Start** May 14, 2026 00:00:05  
**Finish** May 14, 2026 23:29:59  
**Number of Intervals/Interval** 1409.91/60 sec  
**Sample Rate** 4096 sps  
**Setup File Name** Spicewood Hwy 71 - Noise 3.mmb  
**Operator** Operator

**Serial Number** UM13925  
**Model Number** Micromate ISEE 11.0CB  
**Battery Level** 3.8 volts  
**Unit Calibration** April 6, 2026 by Instantel  
**Microphone Calibration** UA10751, April 6, 2026 by Instantel  
**Event File Name** UM13925\_20260514000005.IDFH  
**USB Sensor Support** Disabled

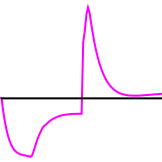
**Notes**  
**Location** Noise 3  
**Client** Spicewood Crushed Stone  
**Company** Hwy 71 Quarry  
**General Notes** IGS, Inc.

**Extended Note** N30.490958 W98.213495

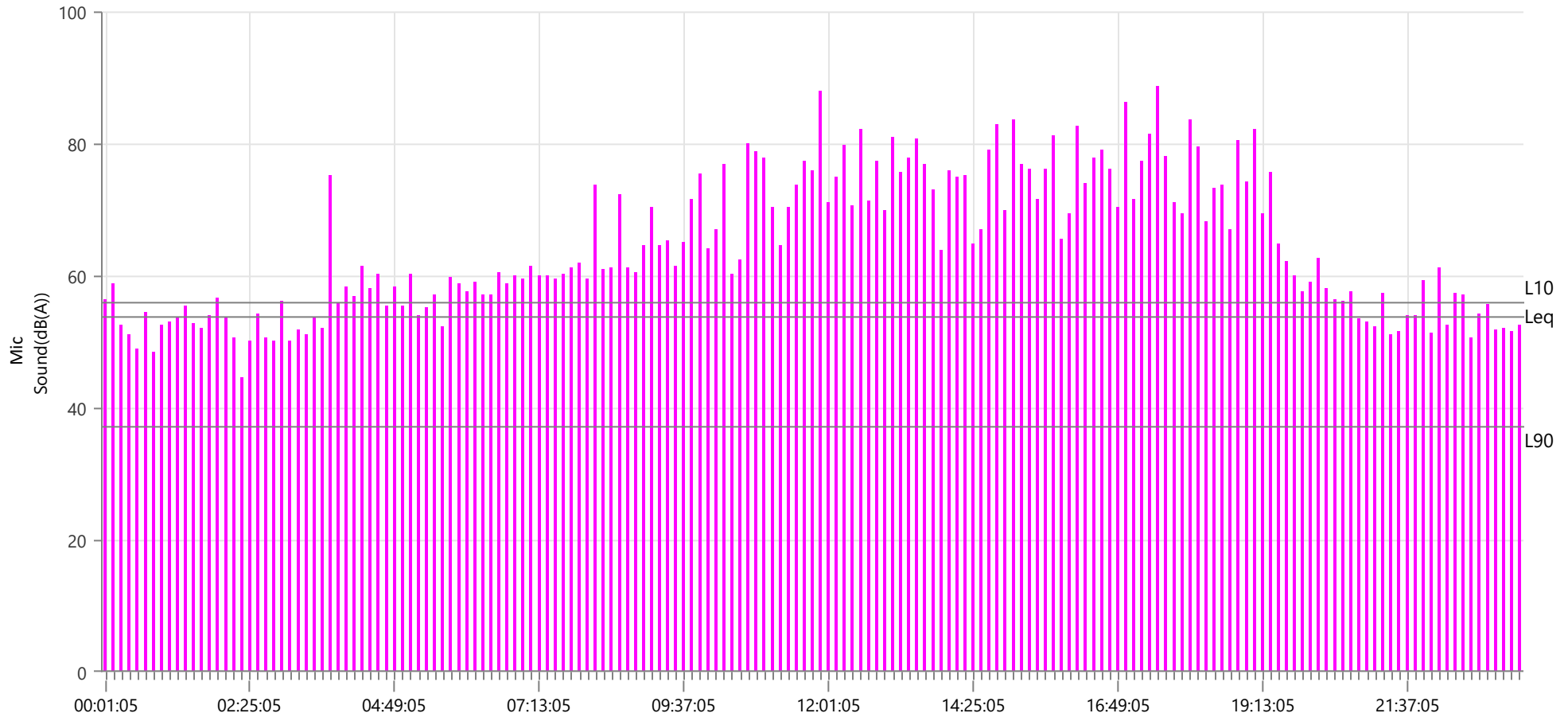
**Post Event Notes** No text to be displayed.

**Sound Level Microphone**  
**LMax** 88.8 dB(A)  
**Date** May 14, 2026  
**Time** 17:35:05  
**LMin** 32.6    **L10** 56    **L90** 37    **Leq** 53.6  
**Sound(dB(A))**  
**Sensor Check** Passed  
**Test Amplitude** 1116 mv

Sensor Check



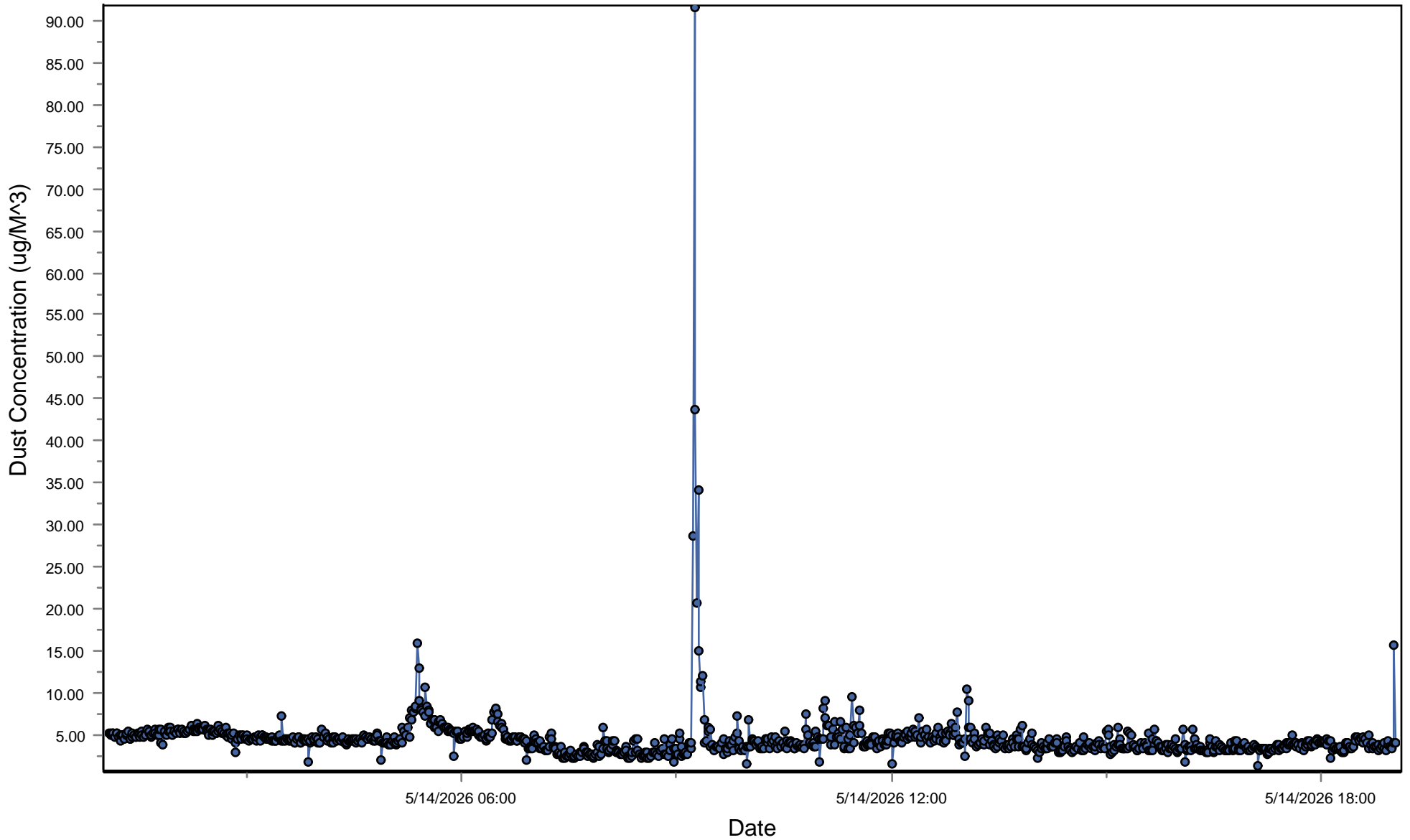
Passed



# Spicewood Crushed Stone - Hwy 71 Quarry

## South Dust Monitor

● D100@AvgPartL



# Spicewood Crushed Stone - Hwy 71 Quarry

## North Dust Monitor

D100@AvgPartL

