

Waveform Trigger Source
Trigger Level(s)
Trigger Level (Mic)
Pre-Trigger/Record Time
Sample Rate
Setup File Name
Operator

Vert at April 10, 2026 13:52:04
 Geo 0.0200 in/s
 Mic 0.01029 psi, 131 dB(L)
 0.50 sec/8.0 sec (Fixed)
 4096 sps
 Spicewood Hwy 71 - Station 1.mmb
 Operator

Serial Number
Model Number
Battery Level
Unit Calibration
Event File Name
USB Sensor Support

UM20084
 Micromate ISEE 11.0CB
 3.8 volts
 December 31, 2025 by Instantel
 UM20084_20260410135204.IDFW
 Disabled

Notes

Location Station 1
 Client Spicewood Crushed Stone
 Company Hwy 71 Quarry
 General Notes IGS, Inc.

Extended Note N30.49572 W98.21577

Post Event Notes No text to be displayed.

Geophone

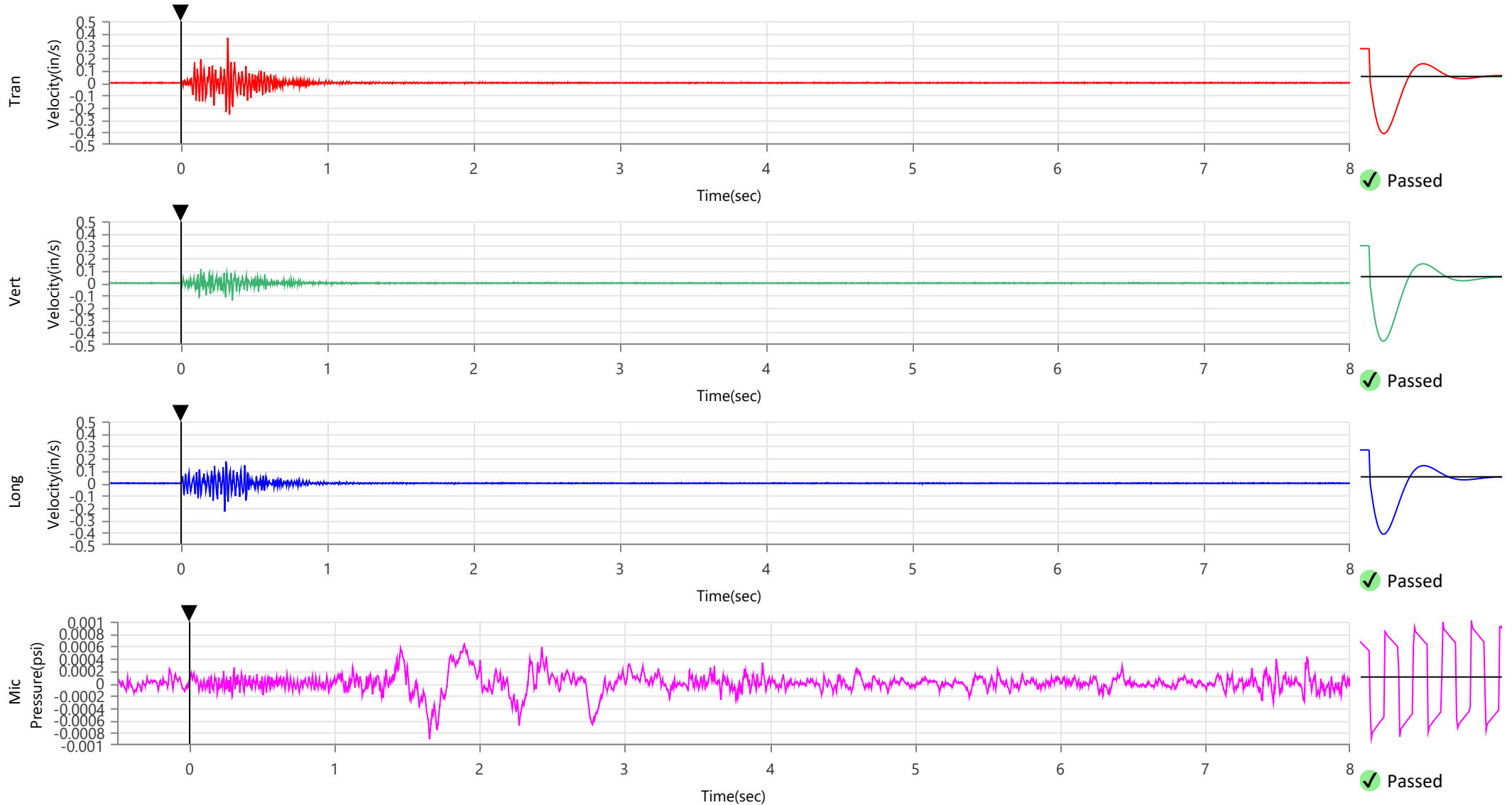
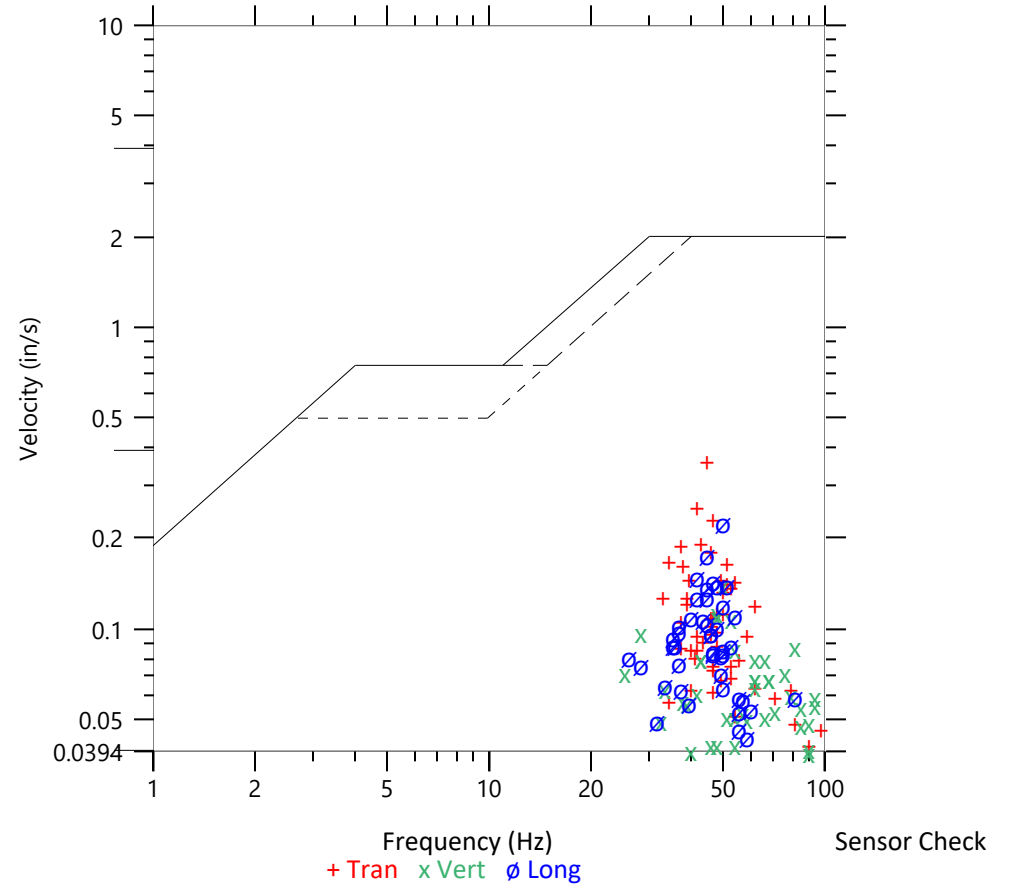
	Tran	Vert	Long
Peak Particle Velocity	0.3652 in/s	0.1412 in/s	0.2287 in/s
Zero Crossing Frequency	44.5 Hz	50.0 Hz	50.0 Hz
Time (Relative to Trigger)	0.316 sec	0.348 sec	0.295 sec
Peak Acceleration	0.283 g	0.161 g	0.211 g
Peak Displacement	0.001 in	0.000 in	0.001 in
Sensor Check	✓ Passed	✓ Passed	✓ Passed
Frequency	7.3 Hz	7.3 Hz	7.3 Hz
Overswing Ratio	4.5	5.0	5.1

Peak Vector Sum 0.3916 in/s at 0.316 sec

ISEE Linear Microphone

Peak Sound Pressure Level 0.000902 psi
 Peak Sound Pressure Level 109.9 dB(L)
 Time (Relative to Trigger) 1.655 sec
 Zero Crossing Frequency 2.3 Hz
 Sensor Check ✓ Passed
 Frequency 19.7 Hz
 Test Amplitude 1366 mv

USBM RI8507 And OSMRE
 Velocity versus Frequency (Zero Crossing)



Waveform Trigger Source
Trigger Level(s)
Trigger Level (Mic)
Pre-Trigger/Record Time
Sample Rate
Setup File Name
Operator

Vert at April 10, 2026 13:52:04
 Geo 0.0200 in/s
 Mic 0.01029 psi, 131 dB(L)
 0.50 sec/8.0 sec (Fixed)
 4096 sps
 Spicewood Hwy 71 - Station 1.mmb
 Operator

Serial Number
Model Number
Battery Level
Unit Calibration
Event File Name
USB Sensor Support

UM20084
 Micromate ISEE 11.0CB
 3.8 volts
 December 31, 2025 by Instantel
 UM20084_20260410135204.IDFW
 Disabled

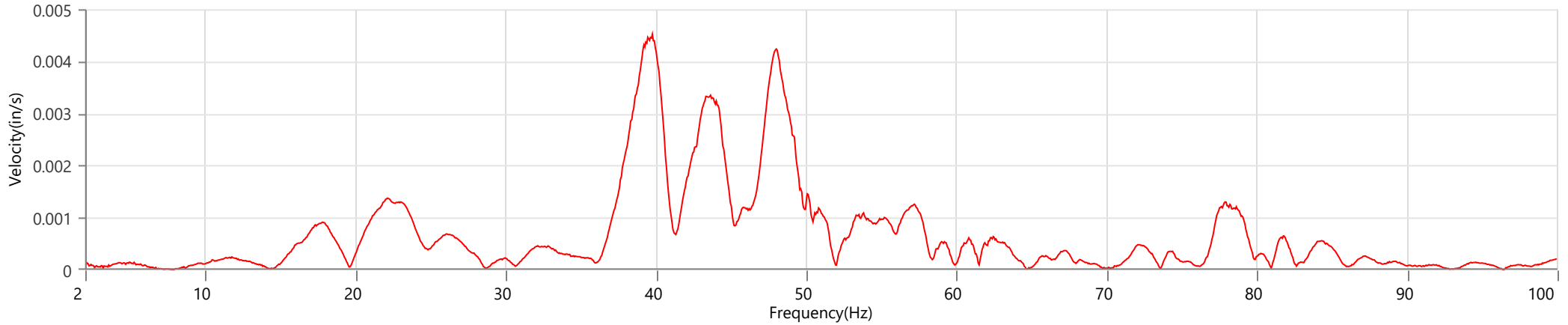
Notes

Location Station 1
 Client Spicewood Crushed Stone
 Company Hwy 71 Quarry
 General Notes IGS, Inc.

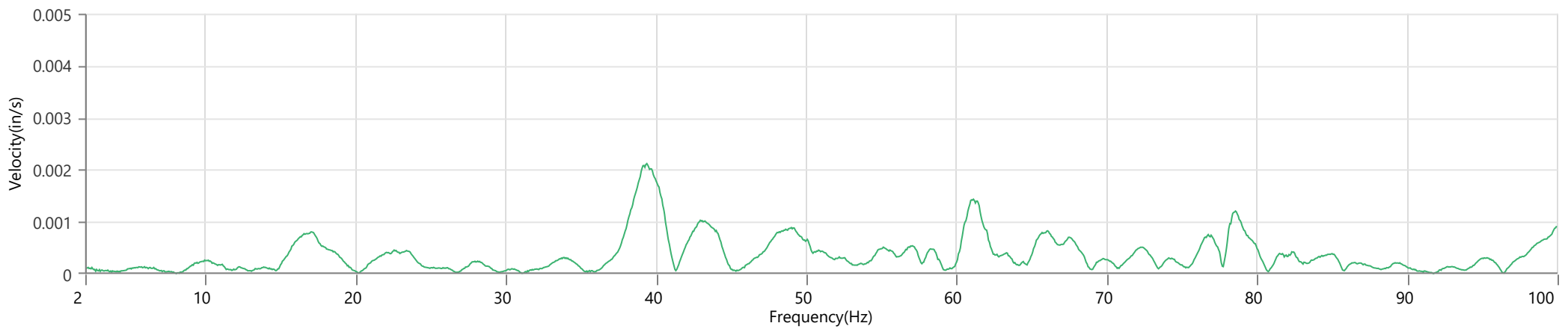
Extended Note N30.49572 W98.21577

Post Event Notes No text to be displayed.

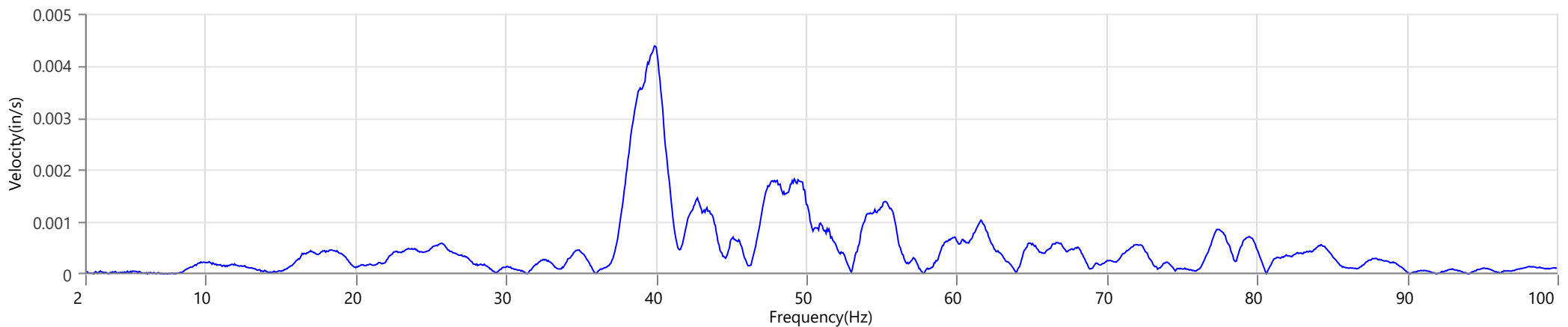
Tran - Dominant Frequency 39.8 Hz, Amplitude 0.0045 in/s (Peak Particle Velocity: 0.3652 in/s)



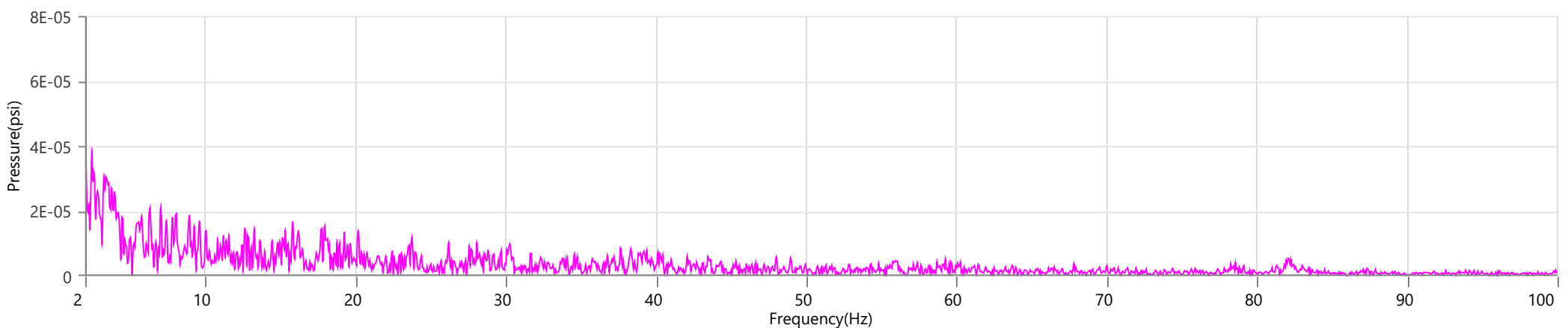
Vert - Dominant Frequency 39.4 Hz, Amplitude 0.0021 in/s (Peak Particle Velocity: 0.1412 in/s)



Long - Dominant Frequency 39.9 Hz, Amplitude 0.0044 in/s (Peak Particle Velocity: 0.2287 in/s)



Mic - Dominant Frequency 2.0 Hz, Amplitude 0.00005 psi (Peak Sound Pressure Level: 0.000902 psi)



Waveform Trigger Source
Trigger Level(s)
Trigger Level (Mic)
Pre-Trigger/Record Time
Sample Rate
Setup File Name
Operator

Long at April 10, 2026 13:52:04
 Geo 0.0200 in/s
 Mic 0.01029 psi, 131 dB(L)
 0.50 sec/8.0 sec (Fixed)
 4096 sps
 Spicewood Hwy 71 - Station 2.mmb
 Operator

Serial Number
Model Number
Battery Level
Unit Calibration
Event File Name
USB Sensor Support

UM22230
 Micromate ISEE 11.0CB
 3.8 volts
 December 13, 2025 by Instantel
 UM22230_20260410135204.IDFW
 Disabled

Notes

Location Station 2
 Client Spicewood Crushed Stone
 Company Hwy 71
 General Notes IGS, Inc

Extended Note N30.49650 W-98.21572

Post Event Notes No text to be displayed.

Geophone

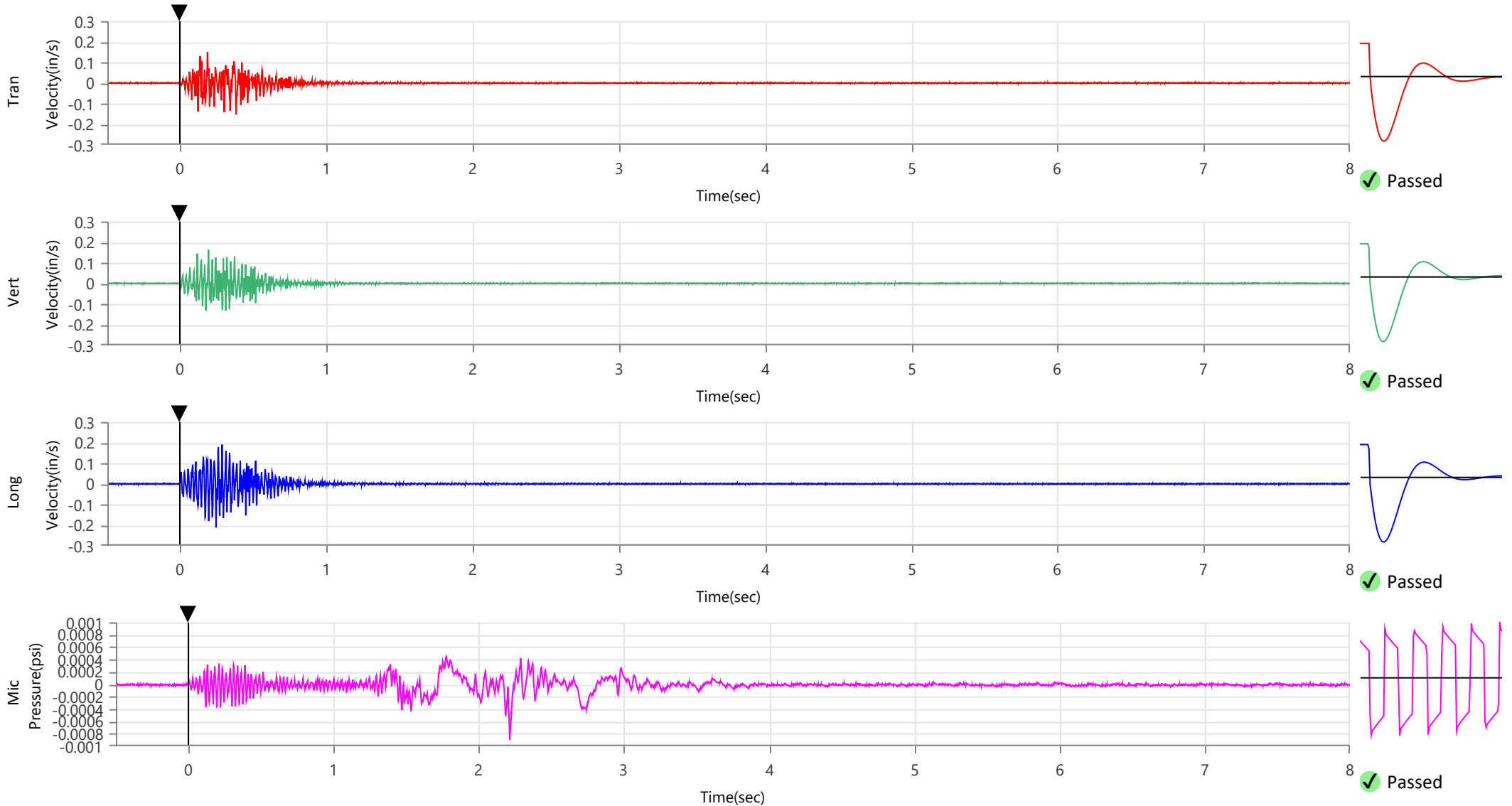
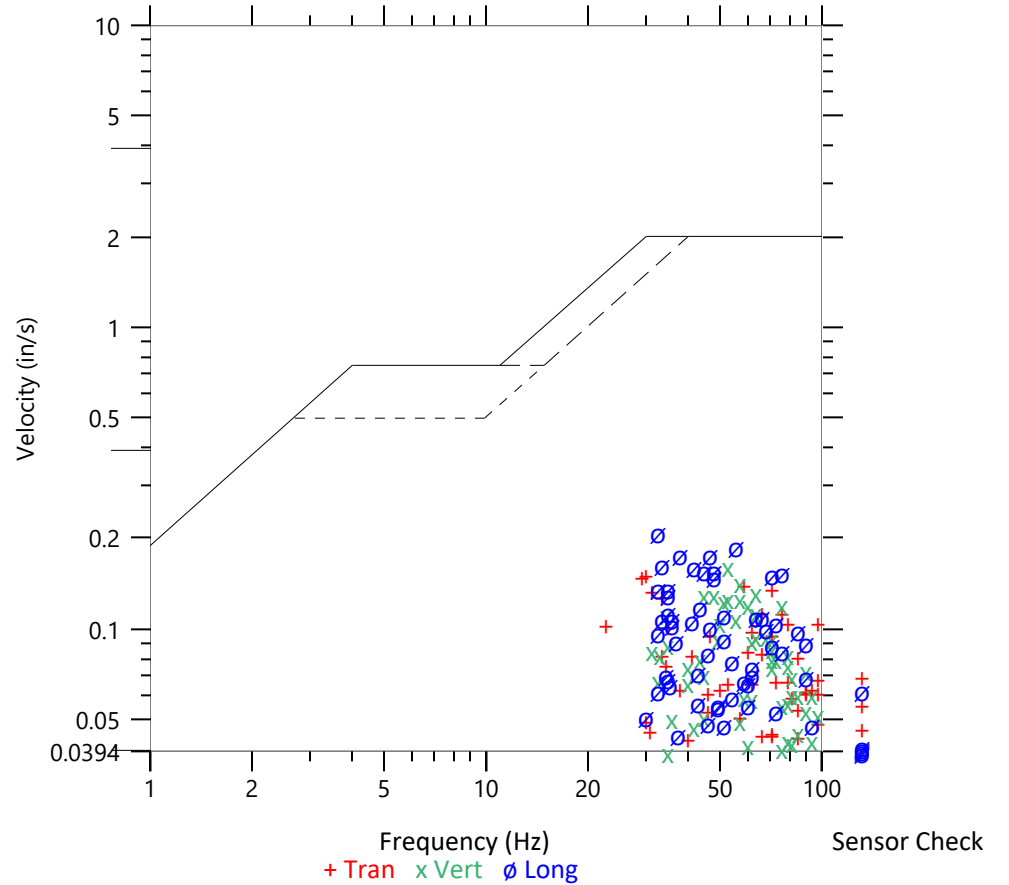
	Tran	Vert	Long
Peak Particle Velocity	0.1533 in/s	0.1629 in/s	0.2119 in/s
Zero Crossing Frequency	30.1 Hz	52.5 Hz	32.5 Hz
Time (Relative to Trigger)	0.381 sec	0.193 sec	0.244 sec
Peak Acceleration	0.165 g	0.165 g	0.184 g
Peak Displacement	0.001 in	0.000 in	0.001 in
Sensor Check	✓ Passed	✓ Passed	✓ Passed
Frequency	7.3 Hz	7.5 Hz	7.3 Hz
Overswing Ratio	4.7	4.2	4.2

Peak Vector Sum 0.2493 in/s at 0.194 sec

ISEE Linear Microphone

Peak Sound Pressure Level 0.000896 psi
 Peak Sound Pressure Level 109.8 dB(L)
 Time (Relative to Trigger) 2.215 sec
 Zero Crossing Frequency 6.5 Hz
 Sensor Check ✓ Passed
 Frequency 20.5 Hz
 Test Amplitude 1347 mv

USBM R18507 And OSMRE
 Velocity versus Frequency (Zero Crossing)



Waveform Trigger Source
Trigger Level(s)
Trigger Level (Mic)
Pre-Trigger/Record Time
Sample Rate
Setup File Name
Operator

Long at April 10, 2026 13:52:04
 Geo 0.0200 in/s
 Mic 0.01029 psi, 131 dB(L)
 0.50 sec/8.0 sec (Fixed)
 4096 sps
 Spicewood Hwy 71 - Station 2.mmb
 Operator

Serial Number
Model Number
Battery Level
Unit Calibration
Event File Name
USB Sensor Support

UM22230
 Micromate ISEE 11.0CB
 3.8 volts
 December 13, 2025 by Instantel
 UM22230_20260410135204.IDFW
 Disabled

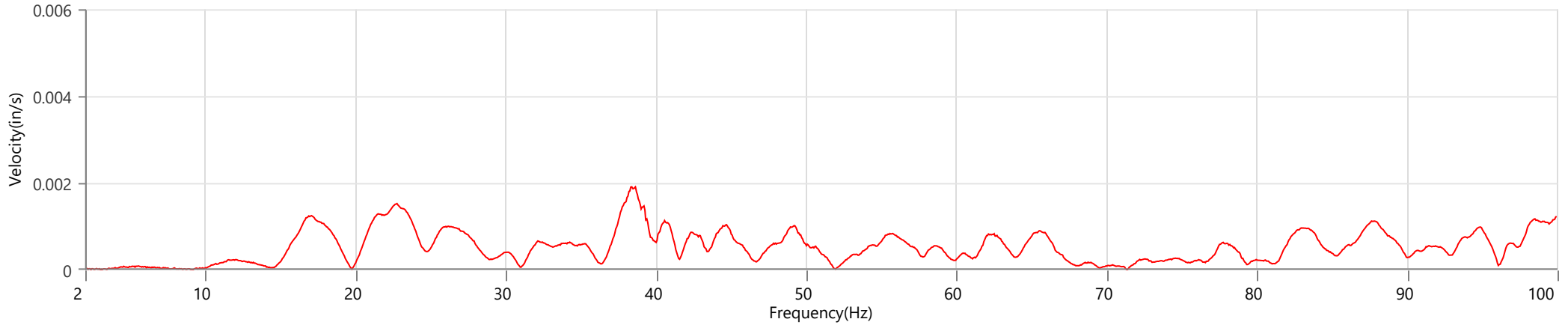
Notes

Location Station 2
 Client Spicewood Crushed Stone
 Company Hwy 71
 General Notes IGS, Inc

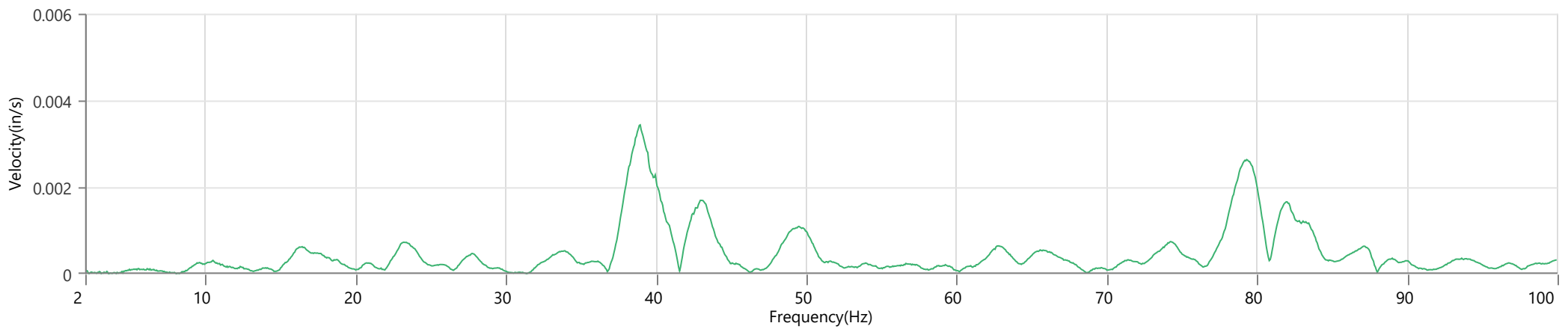
Extended Note N30.49650 W-98.21572

Post Event Notes No text to be displayed.

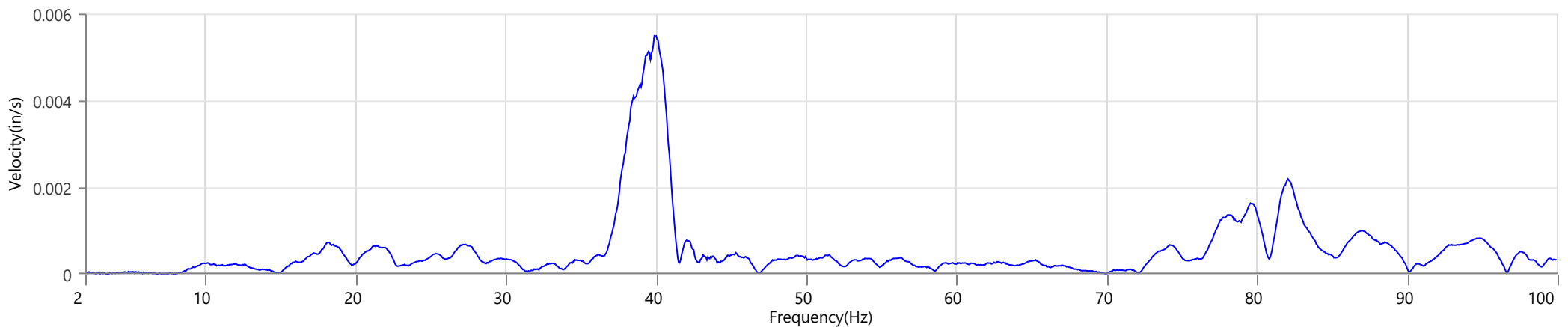
Tran - Dominant Frequency 38.4 Hz, Amplitude 0.0019 in/s (Peak Particle Velocity: 0.1533 in/s)



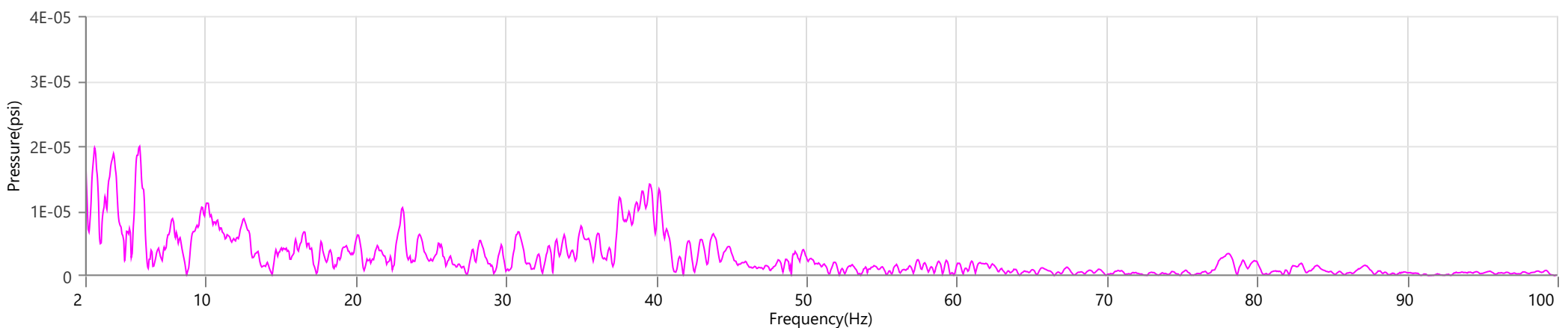
Vert - Dominant Frequency 38.9 Hz, Amplitude 0.0034 in/s (Peak Particle Velocity: 0.1629 in/s)



Long - Dominant Frequency 39.9 Hz, Amplitude 0.0055 in/s (Peak Particle Velocity: 0.2119 in/s)



Mic - Dominant Frequency 2.0 Hz, Amplitude 0.00002 psi (Peak Sound Pressure Level: 0.000896 psi)



Waveform Trigger Source
Trigger Level(s)
Trigger Level (Mic)
Pre-Trigger/Record Time
Sample Rate
Setup File Name
Operator

Long at April 10, 2026 13:52:04
 Geo 0.0200 in/s
 Mic 0.01029 psi, 131 dB(L)
 0.50 sec/8.0 sec (Fixed)
 4096 sps
 Spicewood Hwy 71 - Station 3.mmb
 Operator

Serial Number
Model Number
Battery Level
Unit Calibration
Event File Name
USB Sensor Support

UM6512
 Micromate ISEE 11.0CB
 3.8 volts
 December 20, 2025 by Instantel
 UM6512_20260410135204.IDFW
 Disabled

Notes

Location Station 3
 Client Spicewood Crushed Stone
 Company Hwy 71 Quarry
 General Notes IGS, Inc.

Extended Note N30.49742 W98.21566

Post Event Notes No text to be displayed.

Geophone

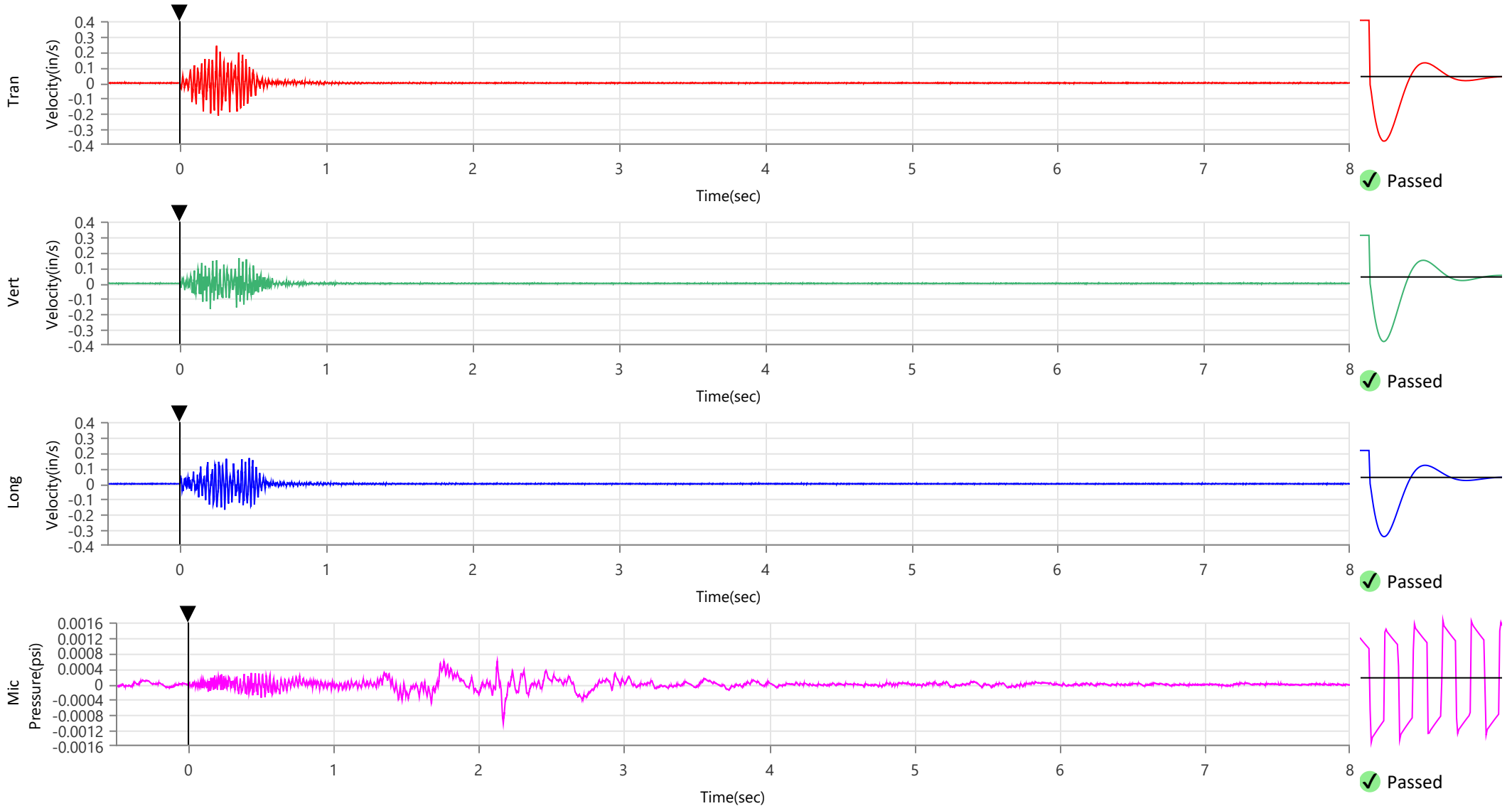
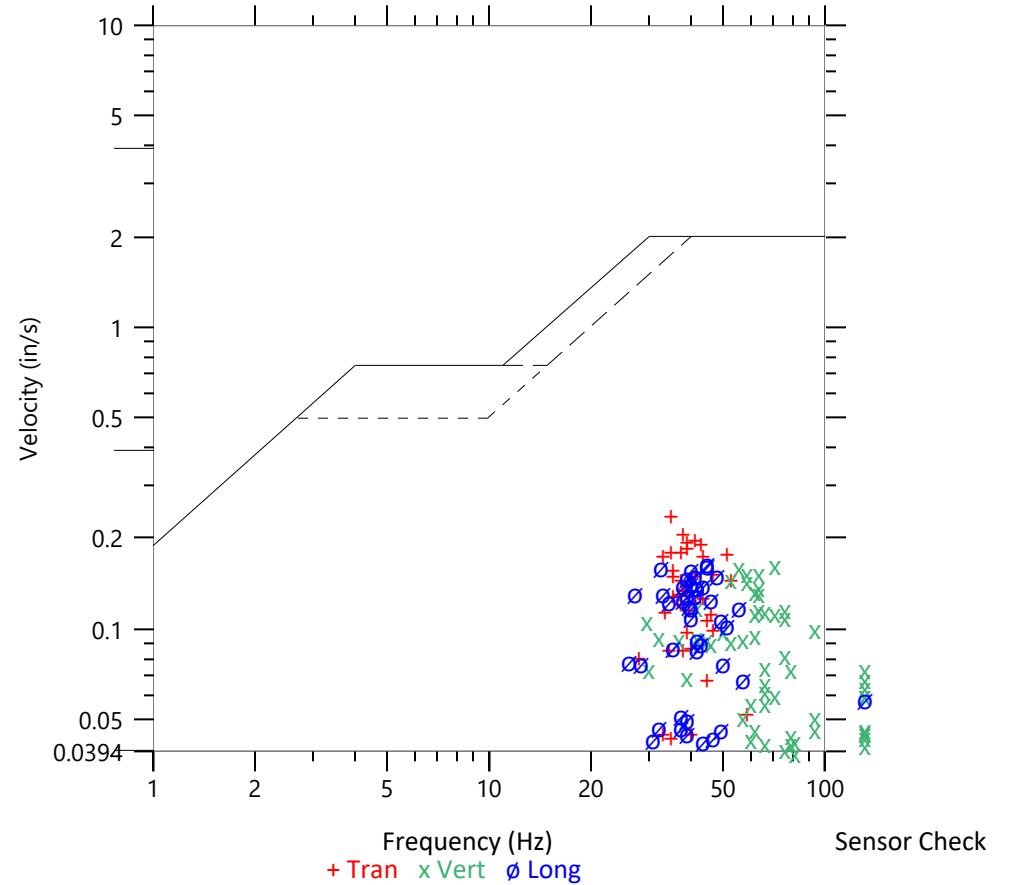
	Tran	Vert	Long
Peak Particle Velocity	0.2405 in/s	0.1654 in/s	0.1679 in/s
Zero Crossing Frequency	34.7 Hz	70.6 Hz	44.5 Hz
Time (Relative to Trigger)	0.247 sec	0.205 sec	0.304 sec
Peak Acceleration	0.280 g	0.220 g	0.217 g
Peak Displacement	0.001 in	0.000 in	0.001 in
Sensor Check	✓ Passed	✓ Passed	✓ Passed
Frequency	7.1 Hz	7.5 Hz	7.1 Hz
Overswing Ratio	4.7	3.8	4.8

Peak Vector Sum 0.2791 in/s at 0.247 sec

ISEE Linear Microphone

Peak Sound Pressure Level 0.001017 psi
 Peak Sound Pressure Level 110.9 dB(L)
 Time (Relative to Trigger) 2.169 sec
 Zero Crossing Frequency 9.9 Hz
 Sensor Check ✓ Passed
 Frequency 19.7 Hz
 Test Amplitude 1478 mv

USBM R18507 And OSMRE
 Velocity versus Frequency (Zero Crossing)



Waveform Trigger Source
Trigger Level(s)
Trigger Level (Mic)
Pre-Trigger/Record Time
Sample Rate
Setup File Name
Operator

Long at April 10, 2026 13:52:04
 Geo 0.0200 in/s
 Mic 0.01029 psi, 131 dB(L)
 0.50 sec/8.0 sec (Fixed)
 4096 sps
 Spicewood Hwy 71 - Station 3.mmb
 Operator

Serial Number
Model Number
Battery Level
Unit Calibration
Event File Name
USB Sensor Support

UM6512
 Micromate ISEE 11.0CB
 3.8 volts
 December 20, 2025 by Instantel
 UM6512_20260410135204.IDFW
 Disabled

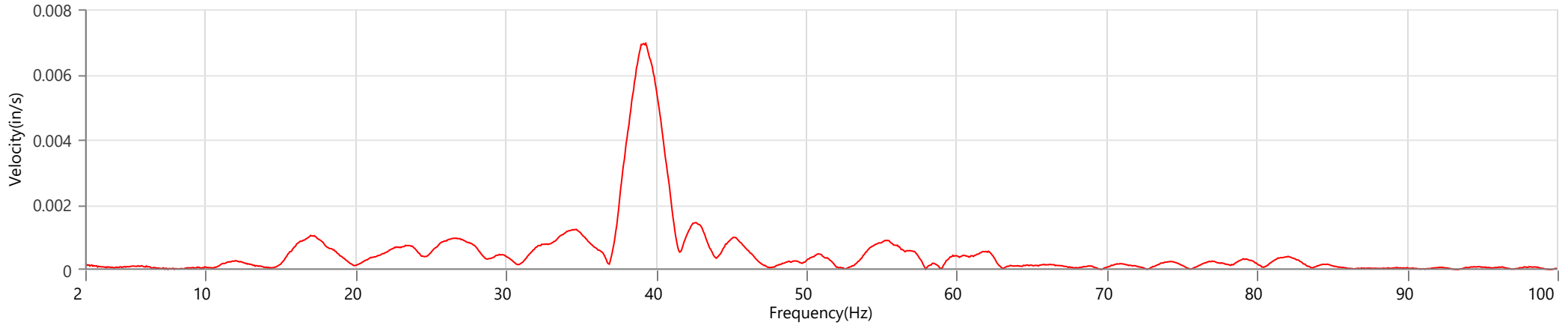
Notes

Location Station 3
 Client Spicewood Crushed Stone
 Company Hwy 71 Quarry
 General Notes IGS, Inc.

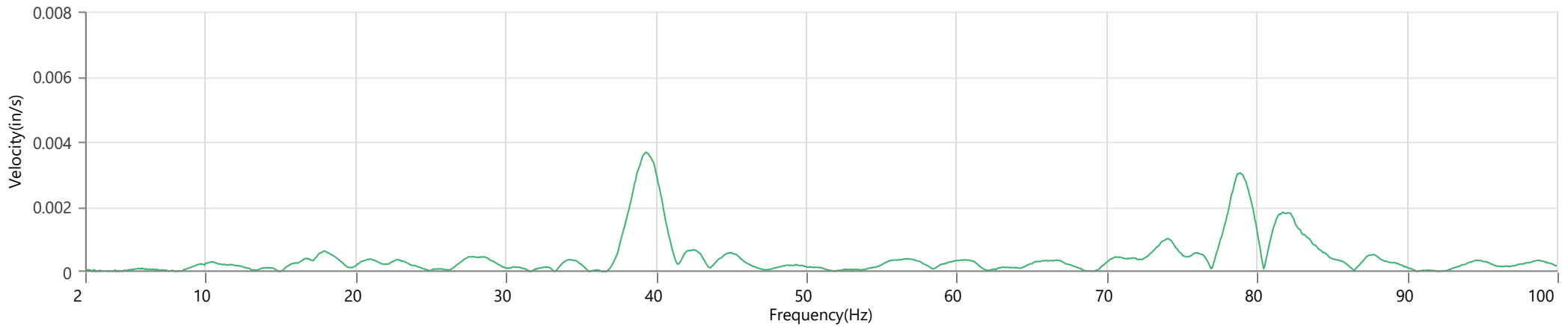
Extended Note N30.49742 W98.21566

Post Event Notes No text to be displayed.

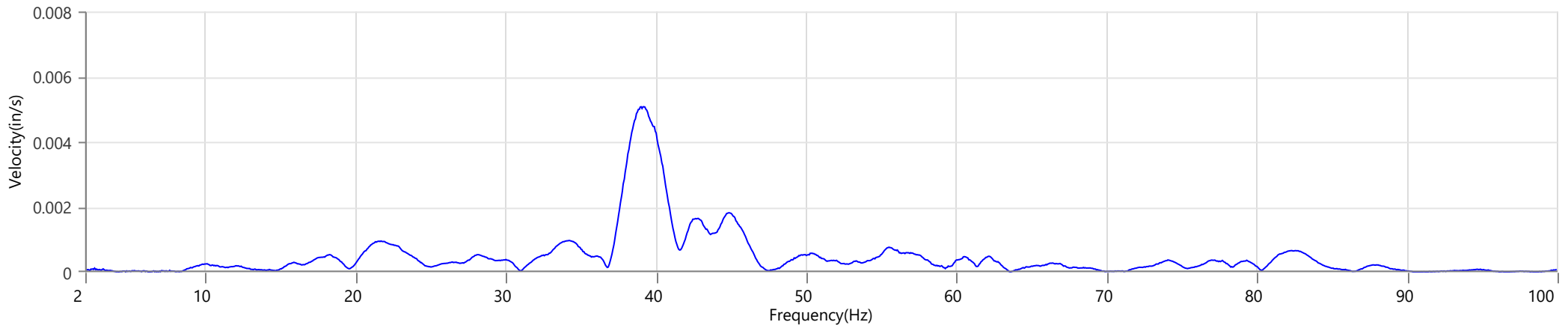
Tran - Dominant Frequency 39.3 Hz, Amplitude 0.0070 in/s (Peak Particle Velocity: 0.2405 in/s)



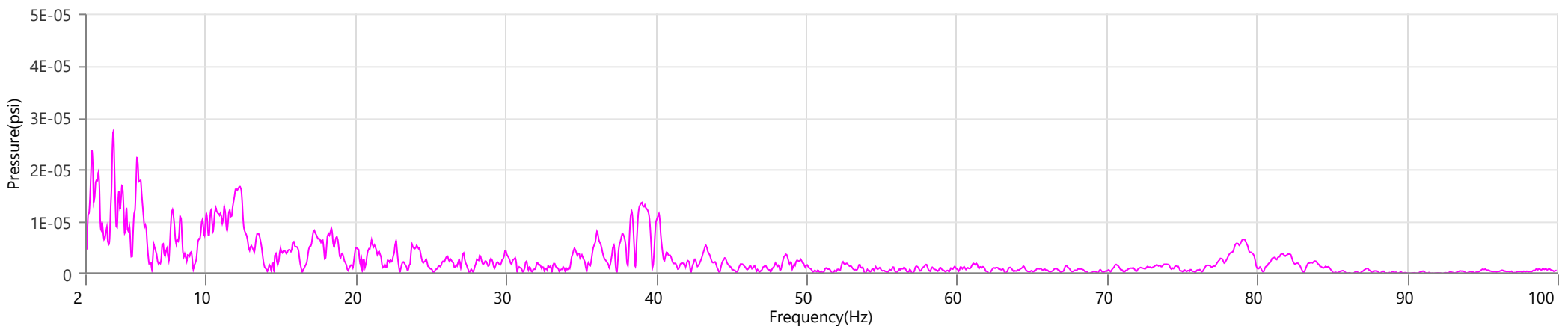
Vert - Dominant Frequency 39.3 Hz, Amplitude 0.0037 in/s (Peak Particle Velocity: 0.1654 in/s)



Long - Dominant Frequency 39.2 Hz, Amplitude 0.0051 in/s (Peak Particle Velocity: 0.1679 in/s)



Mic - Dominant Frequency 3.9 Hz, Amplitude 0.00003 psi (Peak Sound Pressure Level: 0.001017 psi)



Waveform Trigger Source
 Trigger Level(s)
 Trigger Level (Mic)
 Pre-Trigger/Record Time
 Sample Rate
 Setup File Name
 Operator

Vert at April 10, 2026 13:52:05
 Geo 0.0200 in/s
 Mic 0.01029 psi, 131 dB(L)
 0.50 sec/8.0 sec (Fixed)
 4096 sps
 Spicewood Hwy 71 - Station 4.mmb
 Operator

Serial Number
 Model Number
 Battery Level
 Unit Calibration
 Event File Name
 USB Sensor Support

UM21515
 Micromate ISEE 11.0CB
 3.8 volts
 December 23, 2025 by Instantel
 UM21515_20260410135205.IDFW
 Disabled

Notes

Location Station 4
 Client Spicewood Crushed Stone
 Company Hwy 71 Quarry
 General Notes IGS, Inc.

Extended Note N30.49821 W98.21578

Post Event Notes No text to be displayed.

Geophone

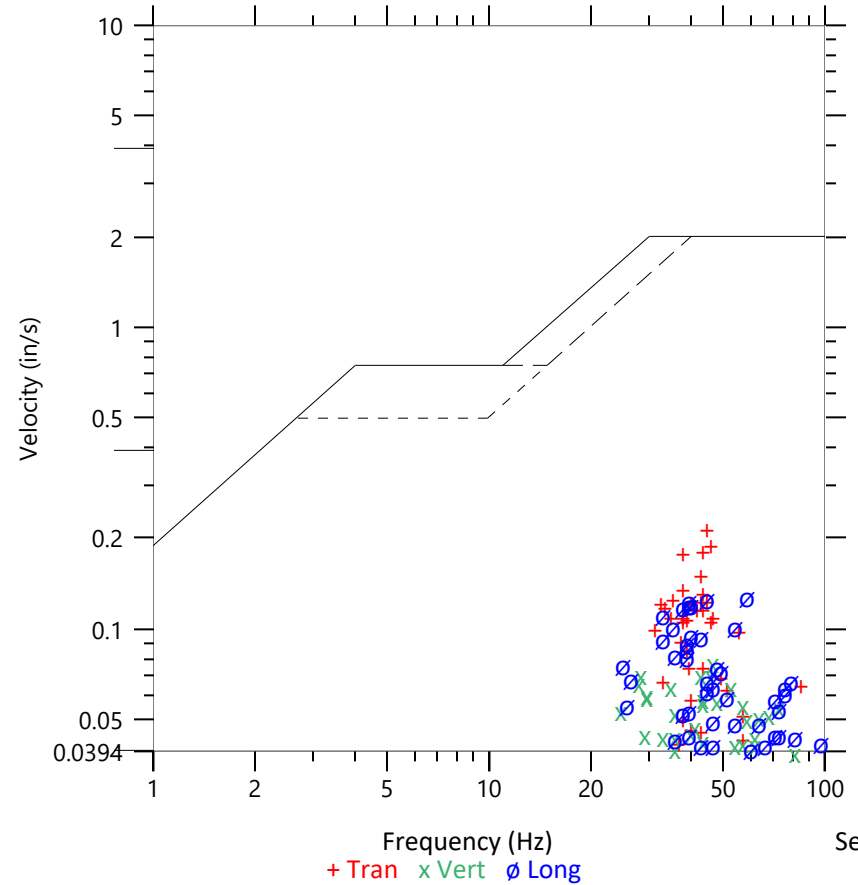
	Tran	Vert	Long
Peak Particle Velocity	0.2163 in/s	0.0788 in/s	0.1294 in/s
Zero Crossing Frequency	44.5 Hz	46.5 Hz	60.2 Hz
Time (Relative to Trigger)	0.442 sec	0.386 sec	0.427 sec
Peak Acceleration	0.194 g	0.082 g	0.135 g
Peak Displacement	0.001 in	0.000 in	0.001 in
Sensor Check	✓ Passed	✓ Passed	✓ Passed
Frequency	7.3 Hz	7.5 Hz	7.3 Hz
Overswing Ratio	4.6	4.5	4.2

Peak Vector Sum 0.2195 in/s at 0.442 sec

ISEE Linear Microphone

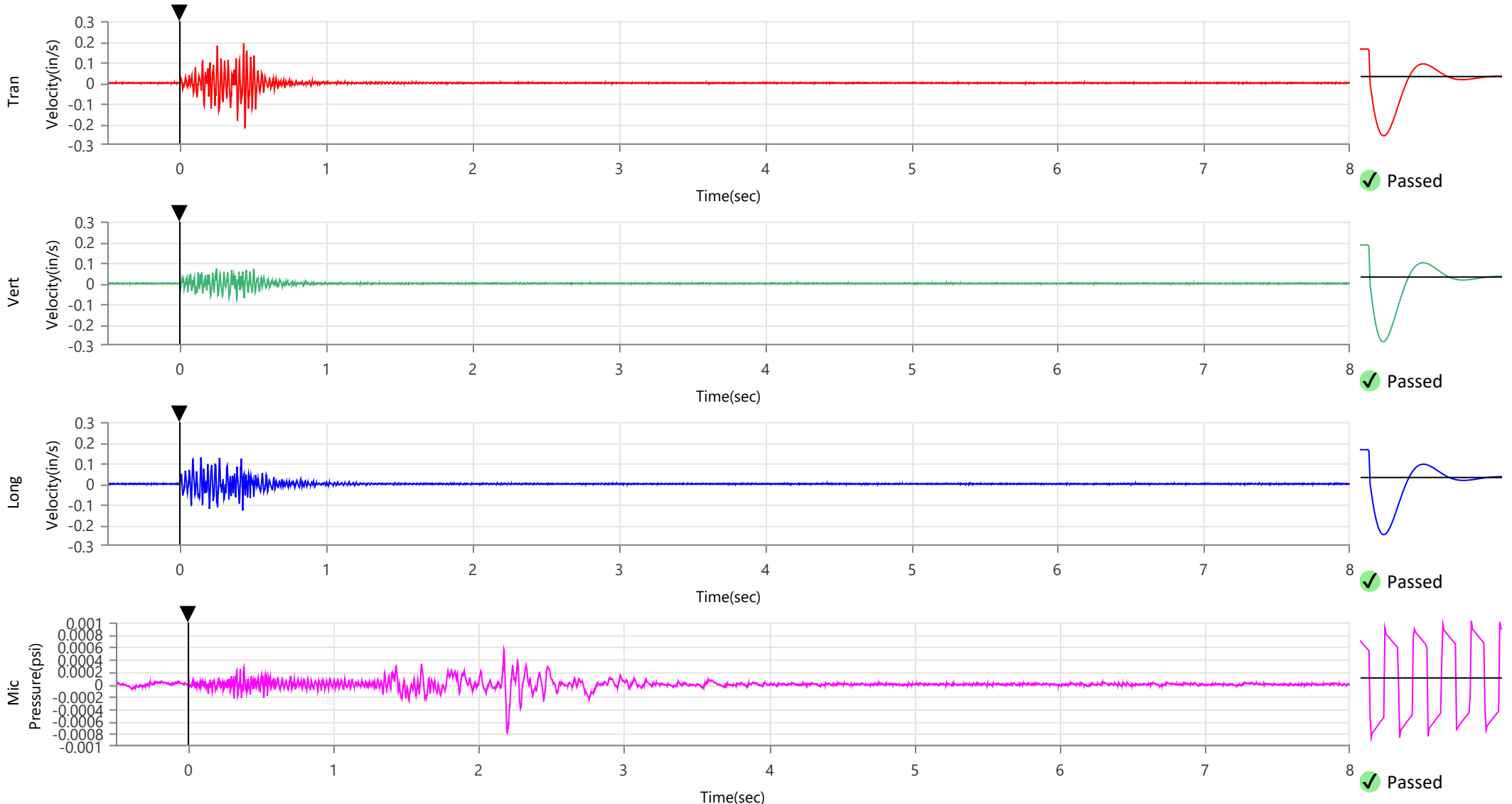
Peak Sound Pressure Level 0.000779 psi
 Peak Sound Pressure Level 108.6 dB(L)
 Time (Relative to Trigger) 2.197 sec
 Zero Crossing Frequency 12.8 Hz
 Sensor Check ✓ Passed
 Frequency 20.5 Hz
 Test Amplitude 1383 mv

USBM R18507 And OSMRE
 Velocity versus Frequency (Zero Crossing)



Sensor Check

+ Tran x Vert o Long



Waveform Trigger Source
Trigger Level(s)
Trigger Level (Mic)
Pre-Trigger/Record Time
Sample Rate
Setup File Name
Operator

Vert at April 10, 2026 13:52:05
 Geo 0.0200 in/s
 Mic 0.01029 psi, 131 dB(L)
 0.50 sec/8.0 sec (Fixed)
 4096 sps
 Spicewood Hwy 71 - Station 4.mmb
 Operator

Serial Number
Model Number
Battery Level
Unit Calibration
Event File Name
USB Sensor Support

UM21515
 Micromate ISEE 11.0CB
 3.8 volts
 December 23, 2025 by Instantel
 UM21515_20260410135205.IDFW
 Disabled

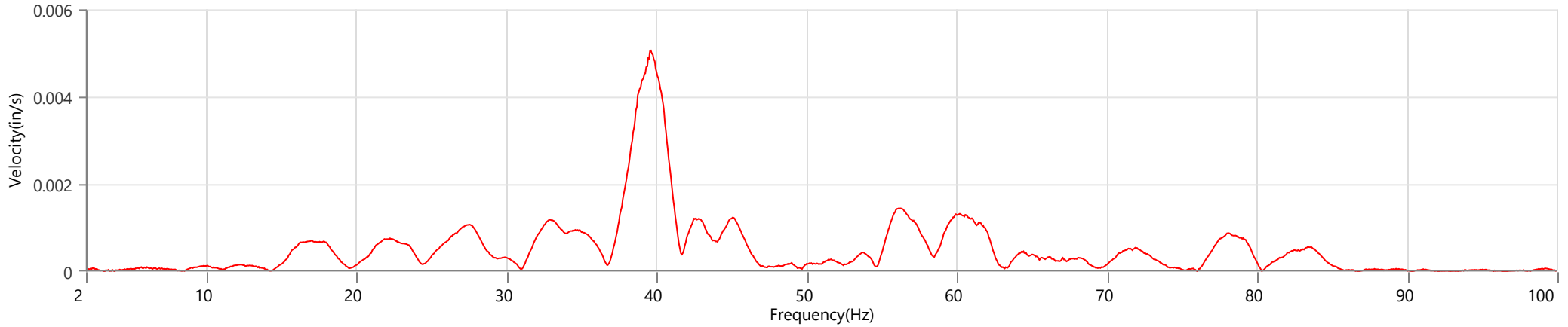
Notes

Location Station 4
 Client Spicewood Crushed Stone
 Company Hwy 71 Quarry
 General Notes IGS, Inc.

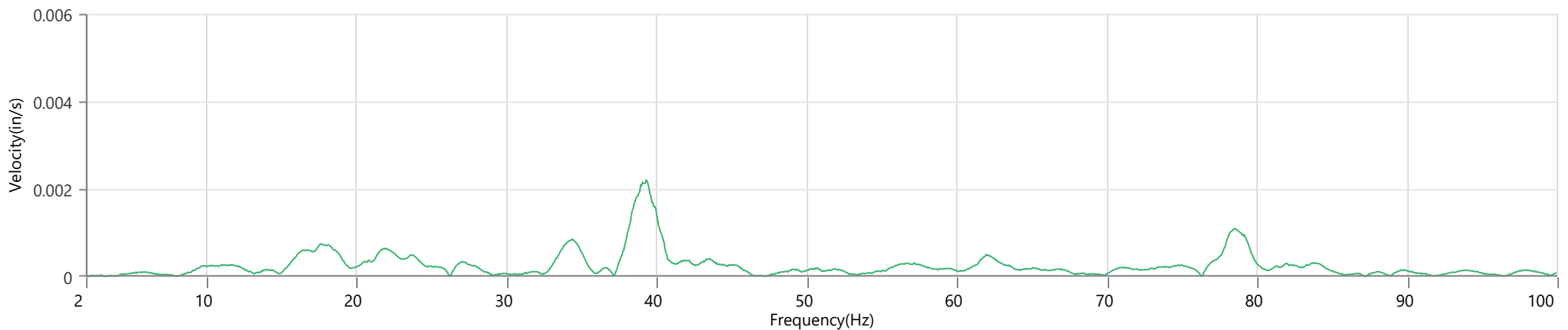
Extended Note N30.49821 W98.21578

Post Event Notes No text to be displayed.

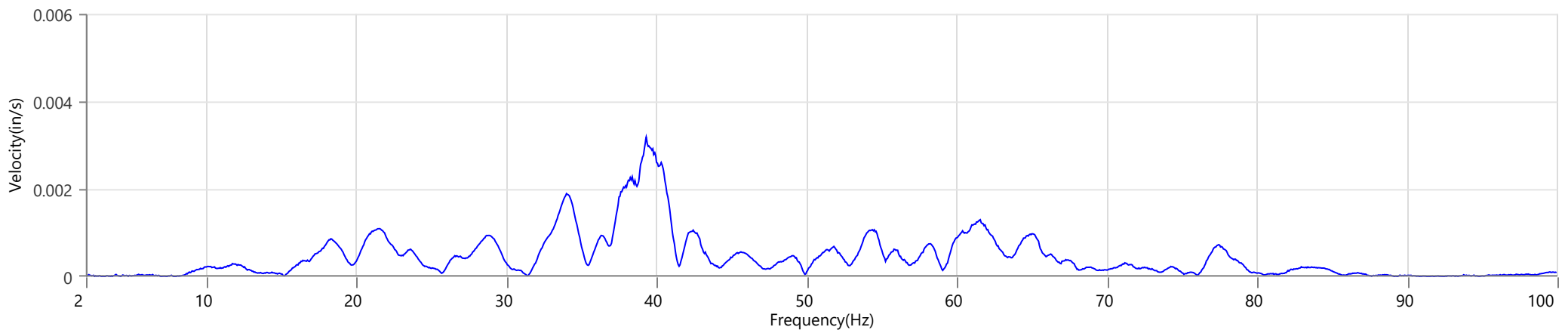
Tran - Dominant Frequency 39.6 Hz, Amplitude 0.0051 in/s (Peak Particle Velocity: 0.2163 in/s)



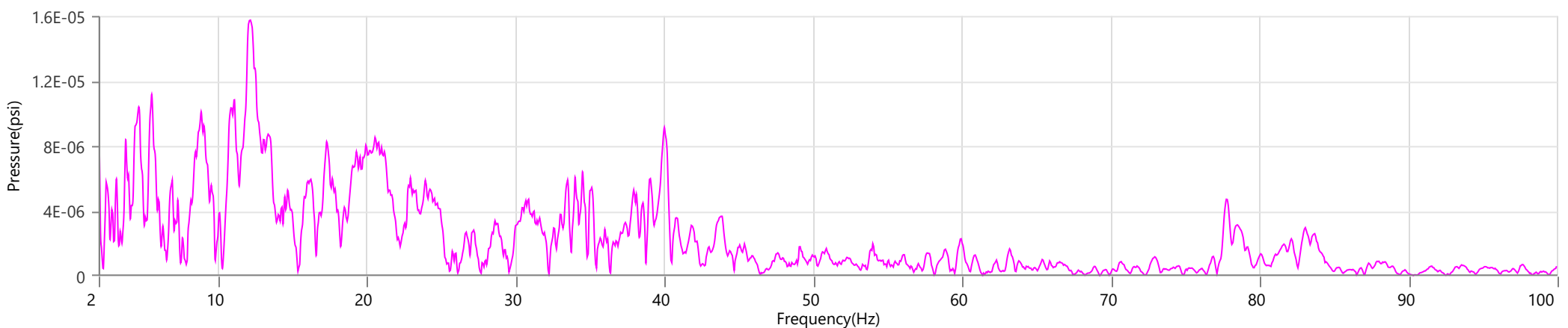
Vert - Dominant Frequency 39.3 Hz, Amplitude 0.0022 in/s (Peak Particle Velocity: 0.0788 in/s)



Long - Dominant Frequency 39.3 Hz, Amplitude 0.0032 in/s (Peak Particle Velocity: 0.1294 in/s)



Mic - Dominant Frequency 12.2 Hz, Amplitude 0.00002 psi (Peak Sound Pressure Level: 0.000779 psi)



Waveform Trigger Source
Trigger Level(s)
Trigger Level (Mic)
Pre-Trigger/Record Time
Sample Rate
Setup File Name
Operator

Vert at April 10, 2026 13:52:04
 Geo 0.0200 in/s
 Mic 0.01029 psi, 131 dB(L)
 0.50 sec/8.0 sec (Fixed)
 4096 sps
 Spicewood Hwy 71 - Station 5.mmb
 Operator

Serial Number
Model Number
Battery Level
Unit Calibration
Event File Name
USB Sensor Support

UM6323
 Micromate ISEE 11.0CB
 3.8 volts
 January 6, 2026 by Instantel
 UM6323_20260410135204.IDFW
 Disabled

Notes

Location Station 5
 Client Spicewood Crushed Stone
 Company Hwy 71 Quarry
 General Notes IGS, Inc.

Extended Note N30.49911 W98.21538

Post Event Notes No text to be displayed.

Geophone

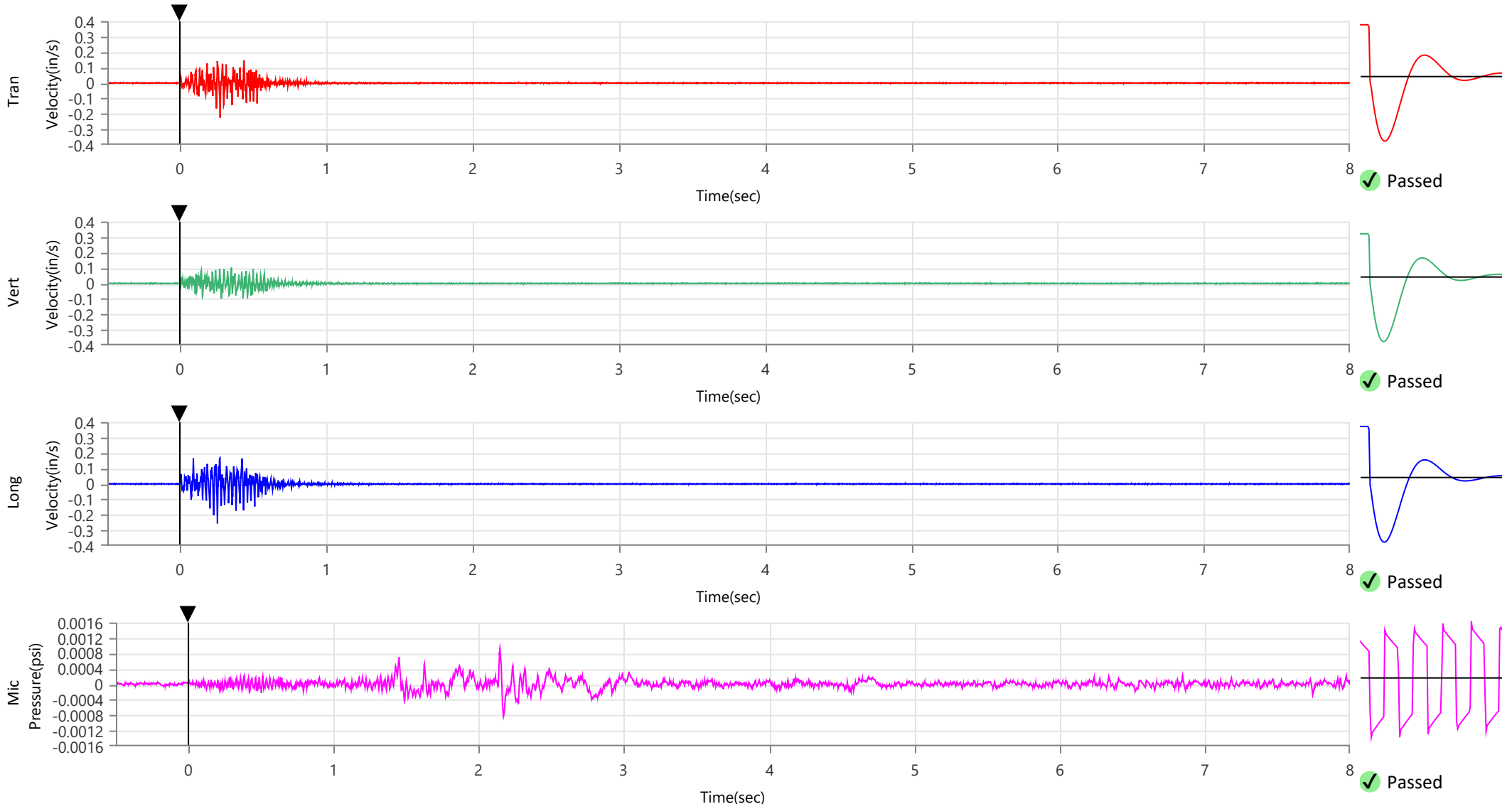
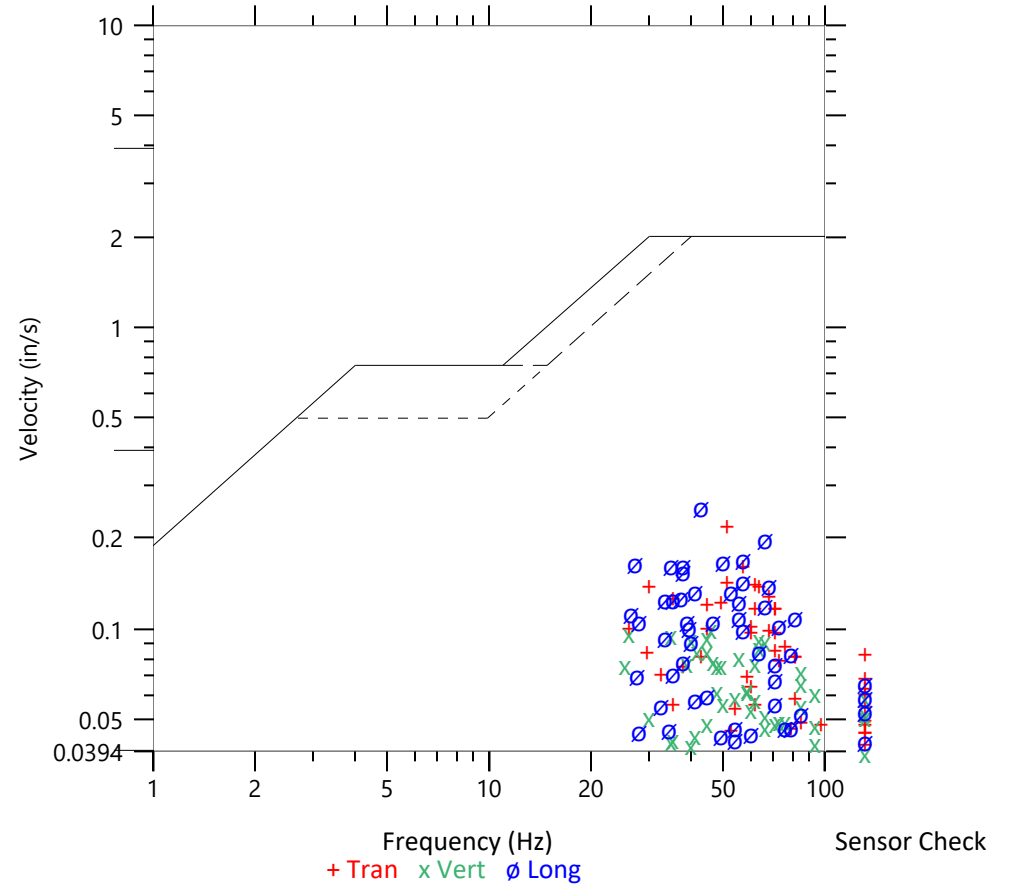
	Tran	Vert	Long
Peak Particle Velocity	0.2247 in/s	0.1021 in/s	0.2557 in/s
Zero Crossing Frequency	51.2 Hz	45.5 Hz	42.7 Hz
Time (Relative to Trigger)	0.272 sec	0.349 sec	0.253 sec
Peak Acceleration	0.201 g	0.145 g	0.250 g
Peak Displacement	0.001 in	0.000 in	0.001 in
Sensor Check	✓ Passed	✓ Passed	✓ Passed
Frequency	7.5 Hz	7.7 Hz	7.3 Hz
Overswing Ratio	3.0	3.3	3.6

Peak Vector Sum 0.2920 in/s at 0.253 sec

ISEE Linear Microphone

Peak Sound Pressure Level 0.000936 psi
 Peak Sound Pressure Level 110.2 dB(L)
 Time (Relative to Trigger) 2.146 sec
 Zero Crossing Frequency 20.7 Hz
 Sensor Check ✓ Passed
 Frequency 19.7 Hz
 Test Amplitude 1359 mv

USBM R18507 And OSMRE
 Velocity versus Frequency (Zero Crossing)



Waveform Trigger Source
Trigger Level(s)
Trigger Level (Mic)
Pre-Trigger/Record Time
Sample Rate
Setup File Name
Operator

Vert at April 10, 2026 13:52:04
 Geo 0.0200 in/s
 Mic 0.01029 psi, 131 dB(L)
 0.50 sec/8.0 sec (Fixed)
 4096 sps
 Spicewood Hwy 71 - Station 5.mmb
 Operator

Serial Number
Model Number
Battery Level
Unit Calibration
Event File Name
USB Sensor Support

UM6323
 Micromate ISEE 11.0CB
 3.8 volts
 January 6, 2026 by Instantel
 UM6323_20260410135204.IDFW
 Disabled

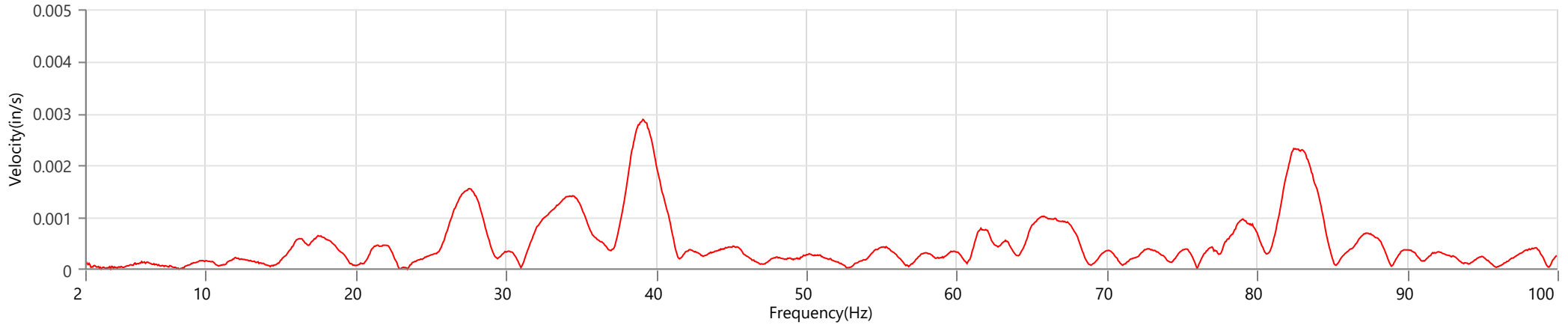
Notes

Location Station 5
 Client Spicewood Crushed Stone
 Company Hwy 71 Quarry
 General Notes IGS, Inc.

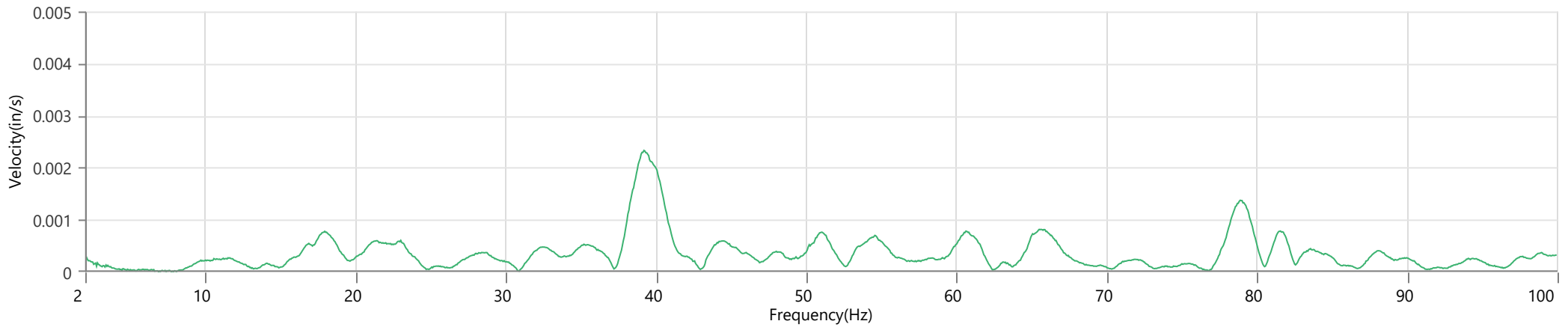
Extended Note N30.49911 W98.21538

Post Event Notes No text to be displayed.

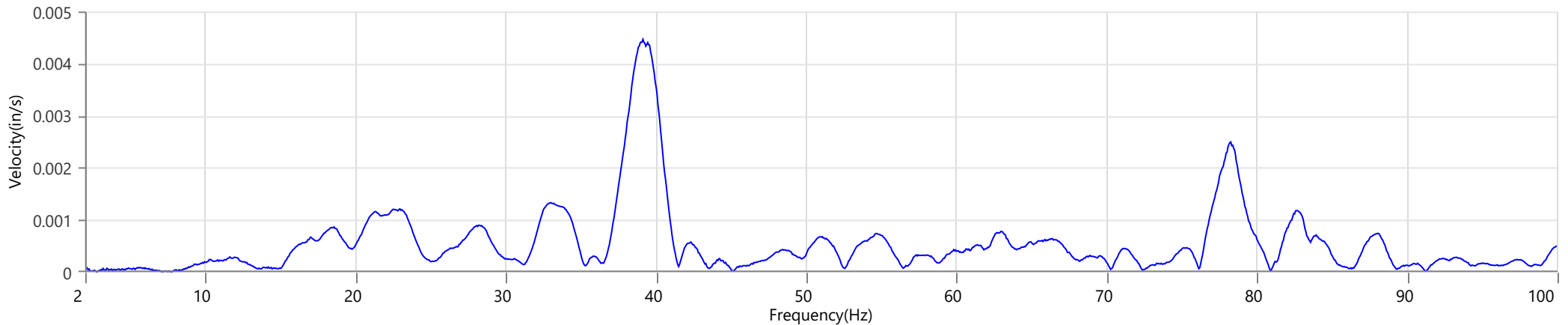
Tran - Dominant Frequency 39.1 Hz, Amplitude 0.0029 in/s (Peak Particle Velocity: 0.2247 in/s)



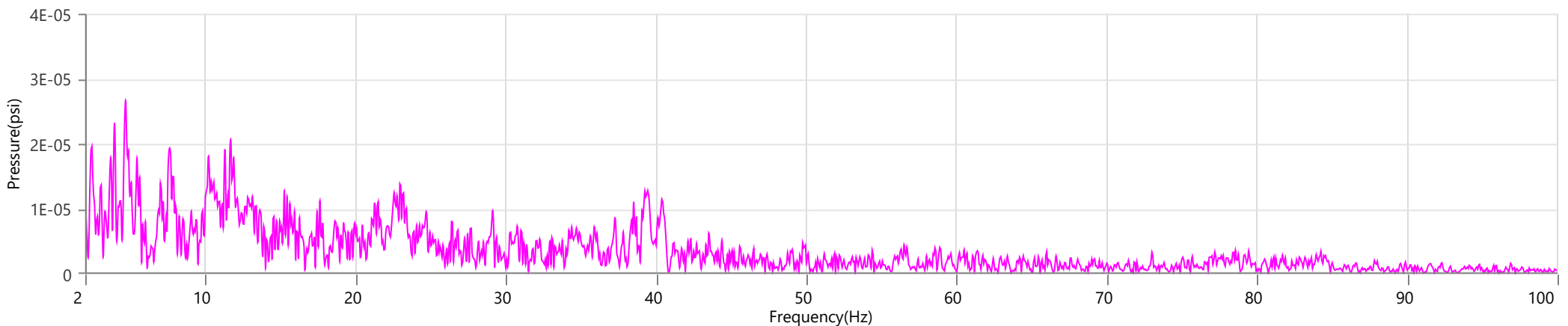
Vert - Dominant Frequency 39.2 Hz, Amplitude 0.0023 in/s (Peak Particle Velocity: 0.1021 in/s)



Long - Dominant Frequency 39.1 Hz, Amplitude 0.0045 in/s (Peak Particle Velocity: 0.2557 in/s)



Mic - Dominant Frequency 4.7 Hz, Amplitude 0.00003 psi (Peak Sound Pressure Level: 0.000936 psi)



Waveform Trigger Source
Trigger Level(s)
Trigger Level (Mic)
Pre-Trigger/Record Time
Sample Rate
Setup File Name
Operator

Vert at April 10, 2026 13:52:05
 Geo 0.0200 in/s
 Mic 0.01029 psi, 131 dB(L)
 0.50 sec/8.0 sec (Fixed)
 4096 sps
 Spicewood Hwy 71 - Station 6.mmb
 Operator

Serial Number
Model Number
Battery Level
Unit Calibration
Event File Name
USB Sensor Support

UM6470
 Micromate ISEE 11.0AK
 3.8 volts
 May 1, 2025 by Instantel
 UM6470_20260410135205.IDFW
 Disabled

Notes

Location Station 6
 Client Spicewood Crushed Stone
 Company Hwy 71 Quarry
 General Notes IGS, Inc.

Extended Note N30.495113 W98.206539

Post Event Notes No text to be displayed.

Geophone

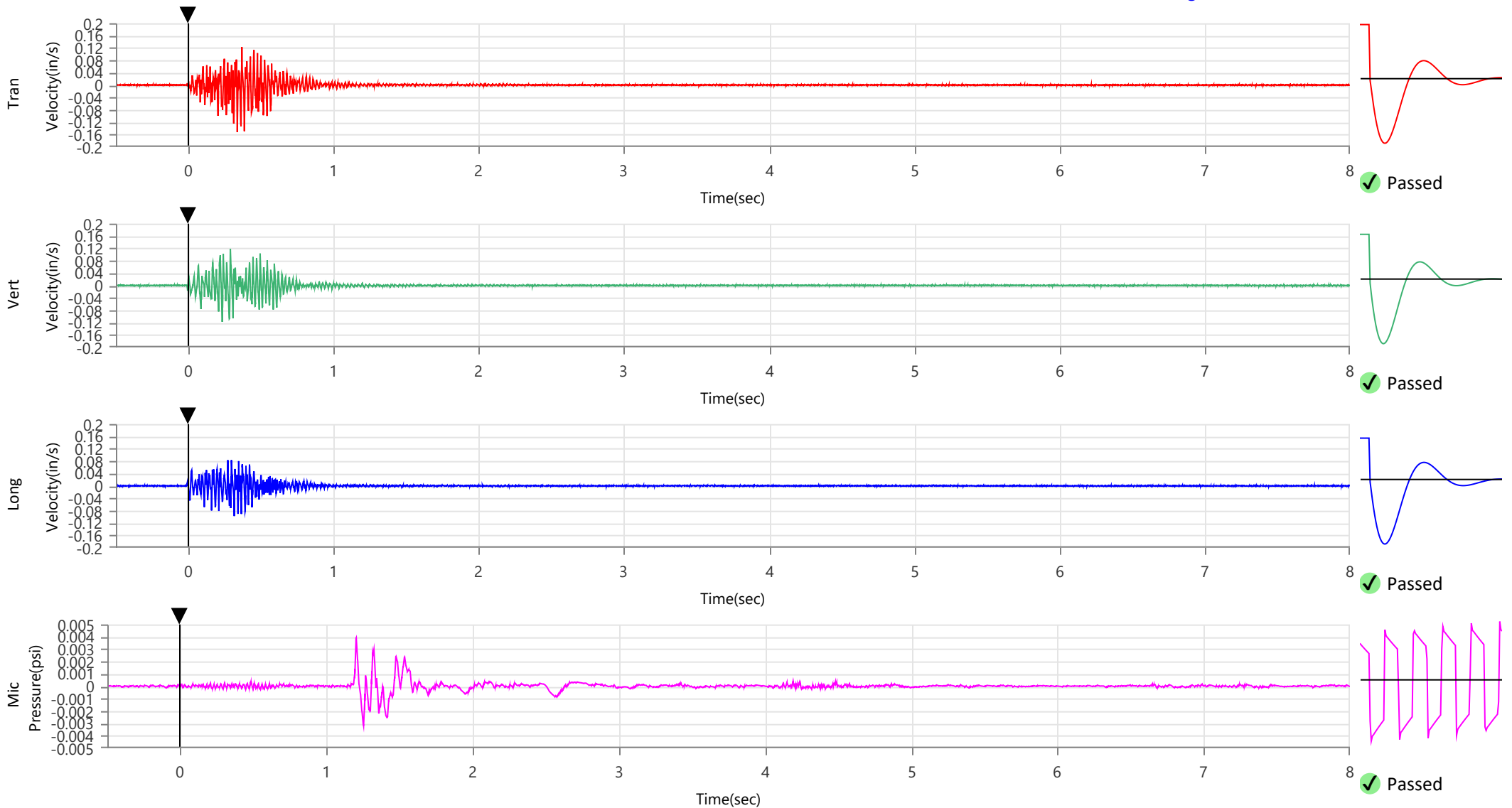
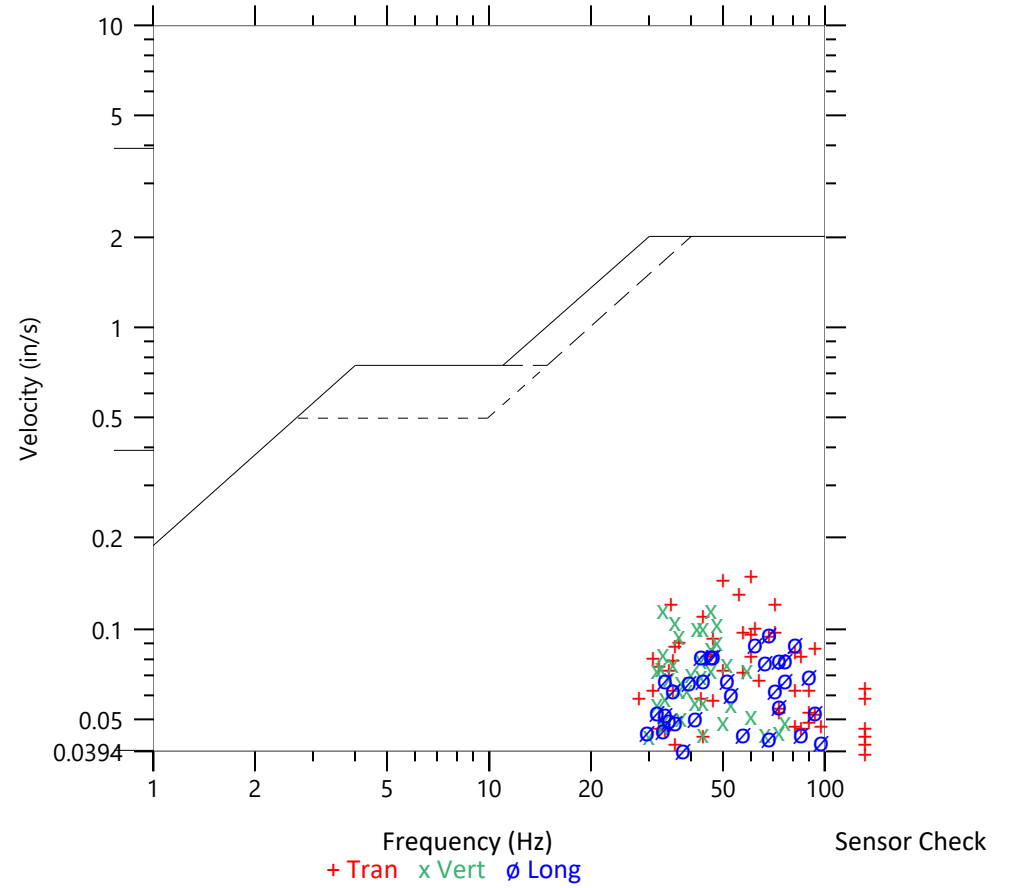
	Tran	Vert	Long
Peak Particle Velocity	0.1524 in/s	0.1185 in/s	0.0977 in/s
Zero Crossing Frequency	60.2 Hz	33.6 Hz	68.3 Hz
Time (Relative to Trigger)	0.336 sec	0.289 sec	0.316 sec
Peak Acceleration	0.171 g	0.135 g	0.122 g
Peak Displacement	0.000 in	0.000 in	0.000 in
Sensor Check	✓ Passed	✓ Passed	✓ Passed
Frequency	7.3 Hz	7.9 Hz	7.3 Hz
Overswing Ratio	3.5	3.7	3.7

Peak Vector Sum 0.1566 in/s at 0.336 sec

ISEE Linear Microphone

Peak Sound Pressure Level 0.003929 psi
 Peak Sound Pressure Level 122.6 dB(L)
 Time (Relative to Trigger) 1.203 sec
 Zero Crossing Frequency 8.4 Hz
 Sensor Check ✓ Passed
 Frequency 20.5 Hz
 Test Amplitude 1441 mv

USBM R18507 And OSMRE
 Velocity versus Frequency (Zero Crossing)



Waveform Trigger Source
Trigger Level(s)
Trigger Level (Mic)
Pre-Trigger/Record Time
Sample Rate
Setup File Name
Operator

Vert at April 10, 2026 13:52:05
 Geo 0.0200 in/s
 Mic 0.01029 psi, 131 dB(L)
 0.50 sec/8.0 sec (Fixed)
 4096 sps
 Spicewood Hwy 71 - Station 6.mmb
 Operator

Serial Number
Model Number
Battery Level
Unit Calibration
Event File Name
USB Sensor Support

UM6470
 Micromate ISEE 11.0AK
 3.8 volts
 May 1, 2025 by Instantel
 UM6470_20260410135205.IDFW
 Disabled

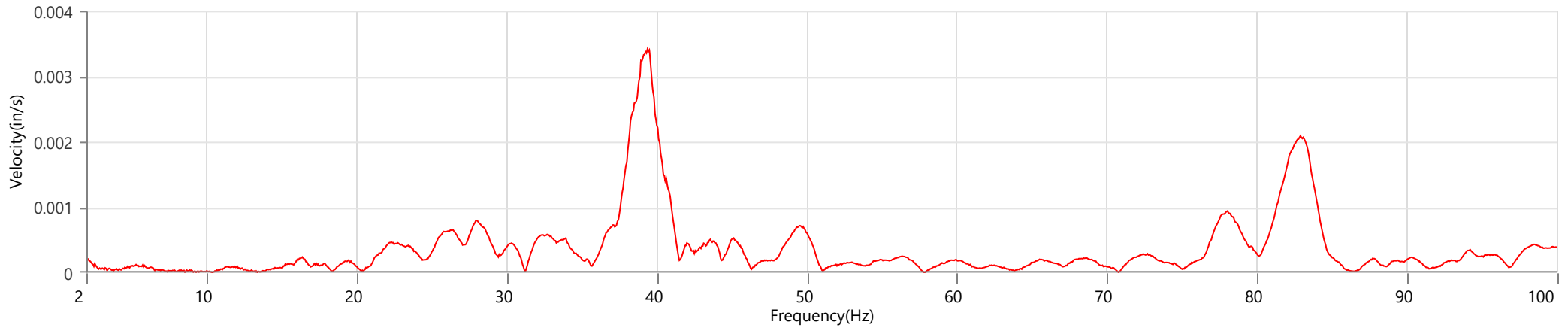
Notes

Location Station 6
 Client Spicewood Crushed Stone
 Company Hwy 71 Quarry
 General Notes IGS, Inc.

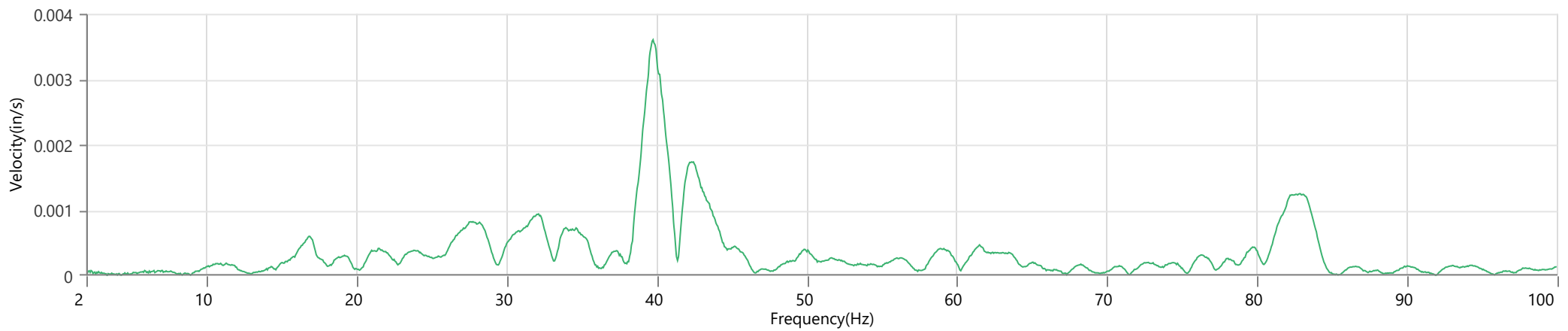
Extended Note N30.495113 W98.206539

Post Event Notes No text to be displayed.

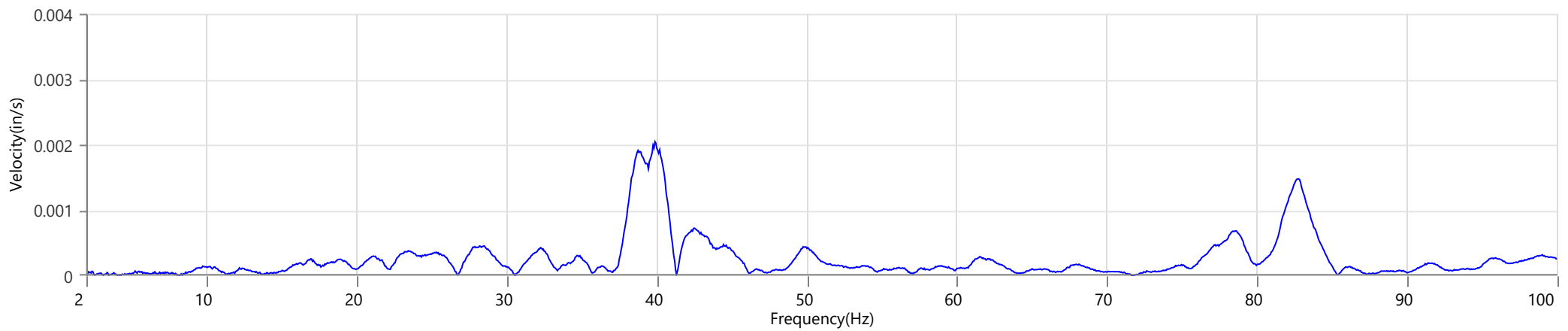
Tran - Dominant Frequency 39.4 Hz, Amplitude 0.0034 in/s (Peak Particle Velocity: 0.1524 in/s)



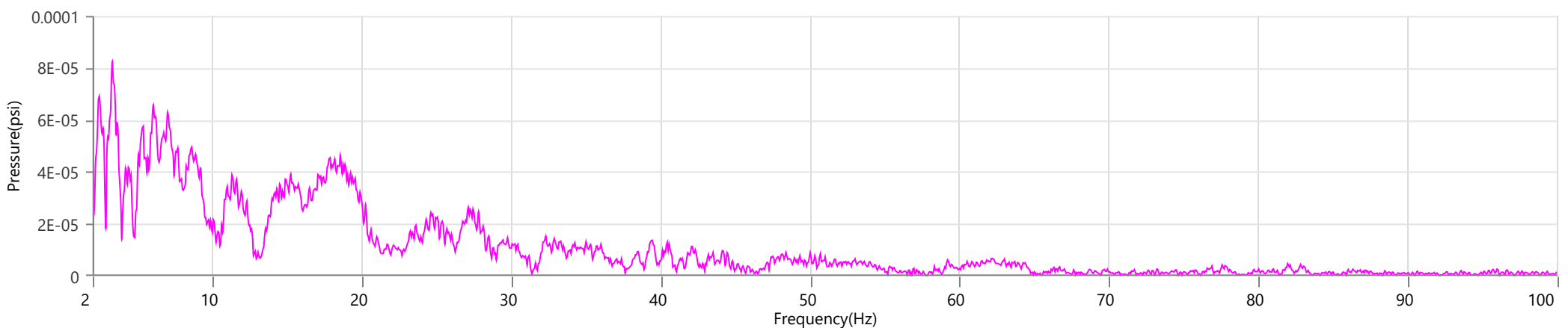
Vert - Dominant Frequency 39.8 Hz, Amplitude 0.0036 in/s (Peak Particle Velocity: 0.1185 in/s)



Long - Dominant Frequency 39.9 Hz, Amplitude 0.0020 in/s (Peak Particle Velocity: 0.0977 in/s)



Mic - Dominant Frequency 3.3 Hz, Amplitude 0.00008 psi (Peak Sound Pressure Level: 0.003929 psi)



Start April 10, 2026 00:00:10
Finish April 10, 2026 23:29:59
Number of Intervals/Interval 1409.82/60 sec
Sample Rate 4096 sps
Setup File Name Spicewood Hwy 71 - Noise 2.mmb
Operator Operator

Serial Number UM21399
Model Number Micromate ISEE 11.0CB
Battery Level 3.8 volts
Unit Calibration March 25, 2026 by Instantel
Microphone Calibration UA10767, February 18, 2025 by Instantel
Event File Name UM21399_20260410000010.IDFH
USB Sensor Support Disabled

Notes
Location Noise 2
Client Spicewood Crushed Stone
Company Hwy 71 Quarry
General Notes IGS, Inc.

Extended Note Station 5N30.49911 W98.21538

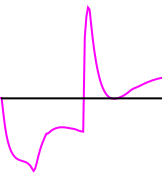
Post Event Notes No text to be displayed.

Sound Level Microphone

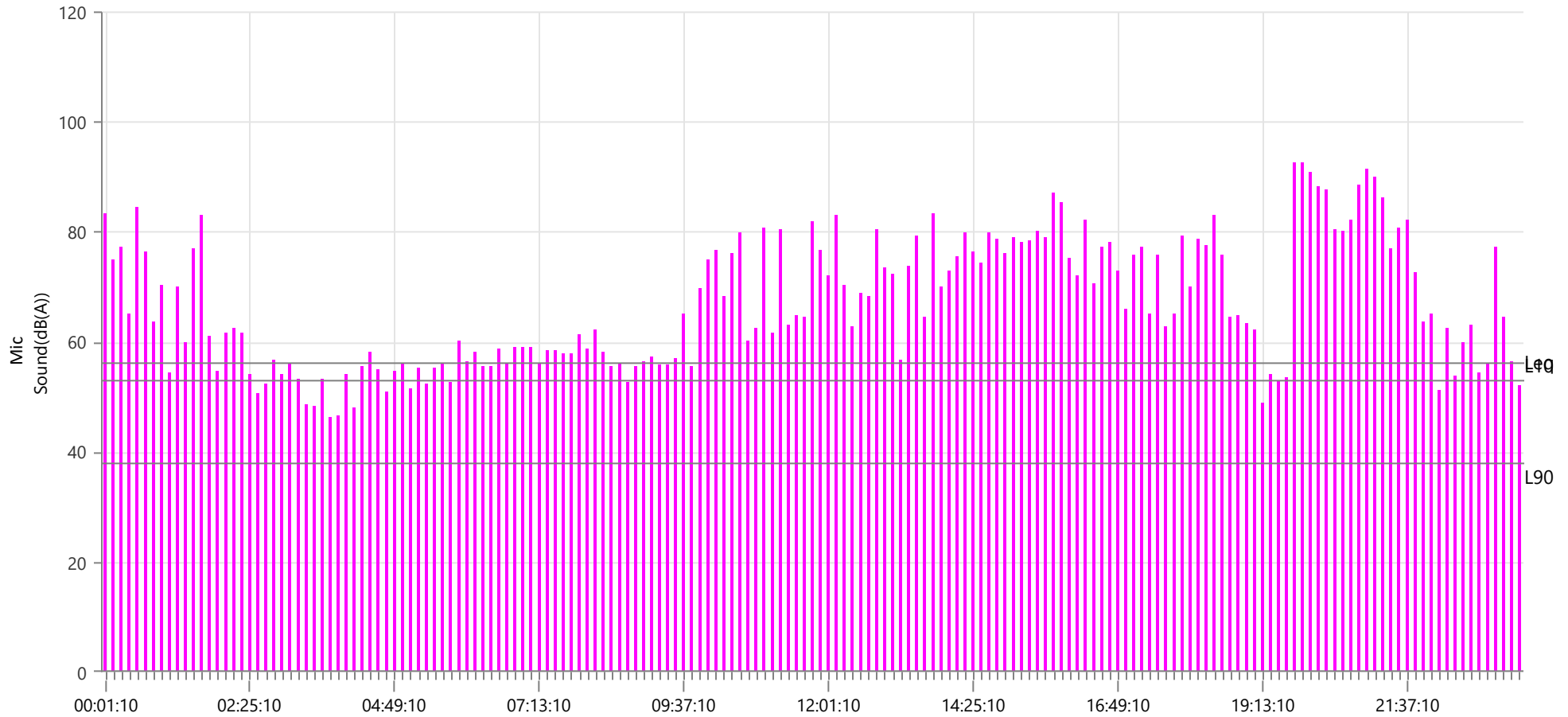
LMax 92.5 dB(A)
Date Apr 10, 2026
Time 19:49:10

	LMin	L10	L90	Leq
Sound(dB(A))	35.3	53	38	56.1
Sensor Check	✓ Passed			
Test Amplitude	1094 mv			

Sensor Check



✓ Passed



Start April 10, 2026 00:00:05
Finish April 10, 2026 23:29:59
Number of Intervals/Interval 1409.91/60 sec
Sample Rate 4096 sps
Setup File Name Spicewood Hwy 71 - Noise 3.mmb
Operator Operator

Serial Number UM8328
Model Number Micromate ISEE 11.0AK
Battery Level 3.8 volts
Unit Calibration May 22, 2025 by Instantel
Microphone Calibration UA10376, February 18, 2025 by Field
Event File Name UM8328_20260410000005.IDFH
USB Sensor Support Disabled

Notes
Location Noise 3
Client Spicewood Crushed Stone
Company Hwy 71 Quarry
General Notes IGS, Inc.

Extended Note N30.490958 W98.213495

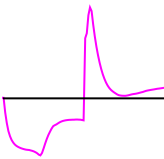
Post Event Notes No text to be displayed.

Sound Level Microphone

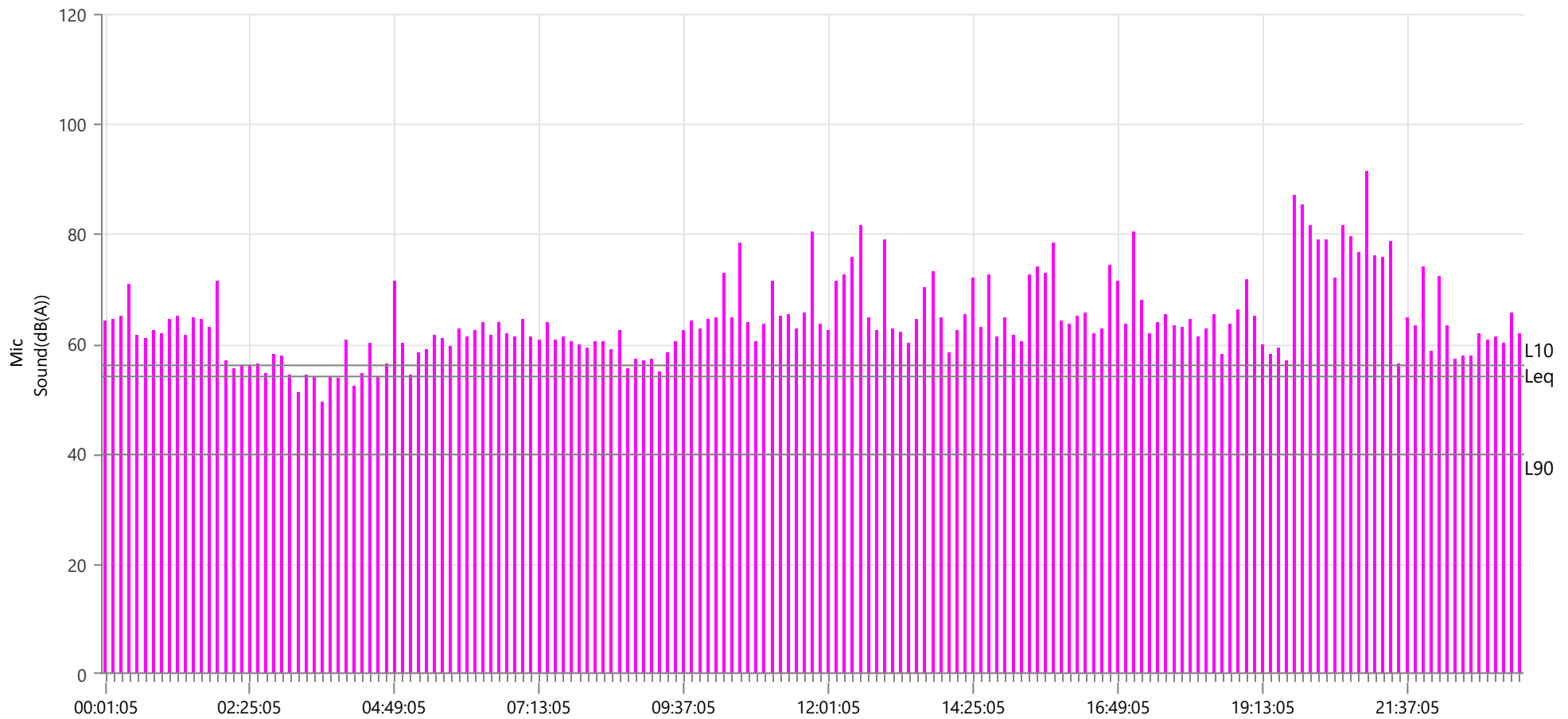
LMax 91.3 dB(A)
Date Apr 10, 2026
Time 21:00:05

	LMin	L10	L90	Leq
Sound(dB(A))	35.6	56	40	54.1
Sensor Check	✓ Passed			
Test Amplitude	970 mv			

Sensor Check



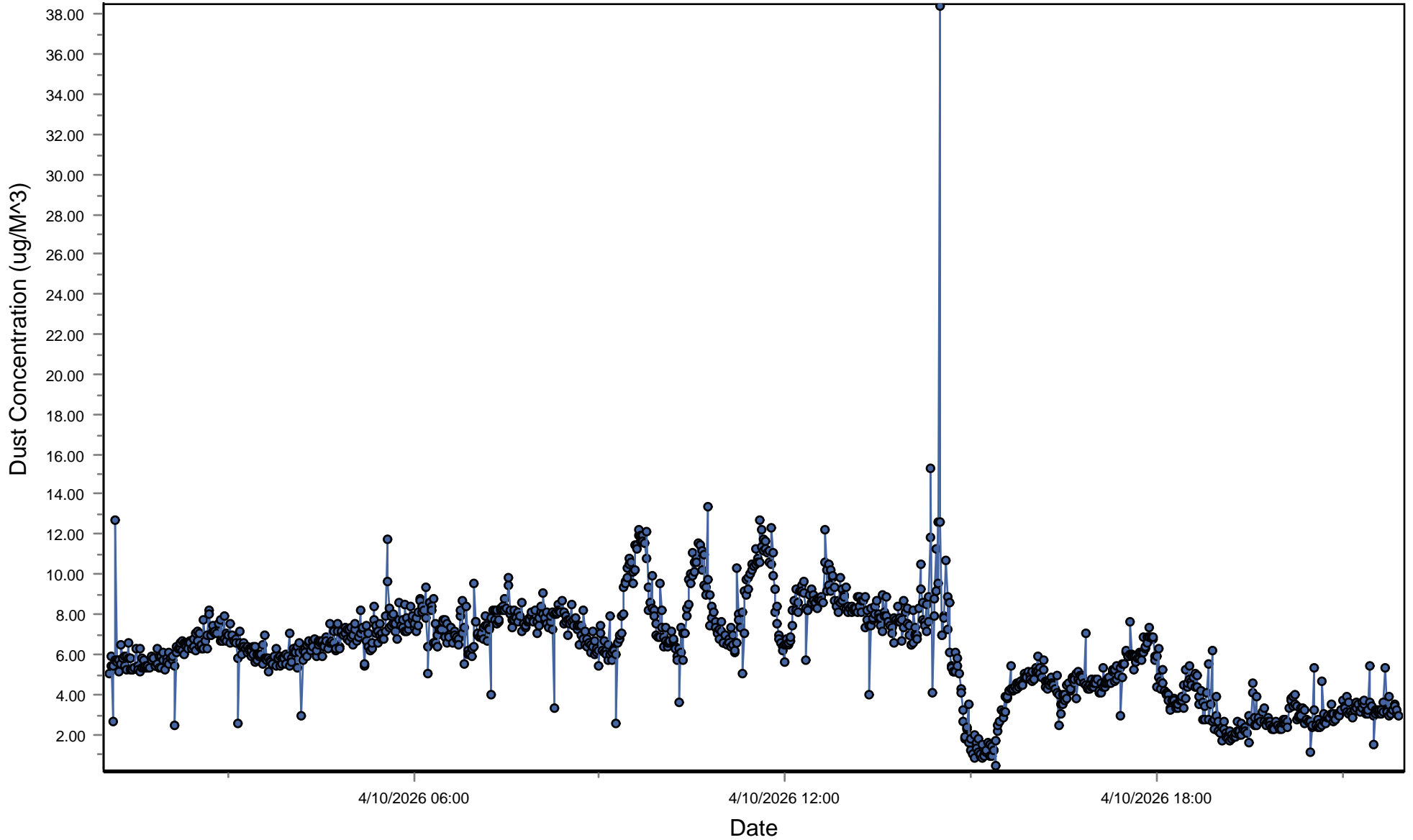
✓ Passed



Spicewood Crushed Stone - Hwy 71 Quarry

South Dust Monitor

● D100@AvgPartL



Spicewood Crushed Stone - Hwy 71 Quarry

North Dust Monitor

● D100@AvgPartL

