



**CITY OF DOUBLE HORN**

**ORDINANCE 2019-ORD001**

**AN ORDINANCE OF THE CITY OF DOUBLE HORN, BURNET COUNTY, TEXAS DOCUMENTING THE BORDERS OF THE CITY OF DOUBLE HORN AND THE BOUNDARIES OF ITS EXTRATERRITORIAL JURISDICTION (ETJ).**

**WHEREAS**, Chapter 41, Section §41.001(a) of the Texas Local Government Code requires that each municipality shall prepare a map that shows the boundaries of the municipality and of its extraterritorial jurisdiction. A copy of the map shall be kept in the office of the secretary or clerk of the municipality; and

**WHEREAS**, the City of Double Horn, Texas (the "City") has commissioned a survey to properly document the boundaries of the city and of its extraterritorial jurisdiction as described and depicted in Exhibit "A", attached hereto and incorporated herein by reference.

**NOW, THEREFORE, BE IT ORDAINED BY THE CITY COUNCIL OF THE CITY OF DOUBLE HORN THAT:**

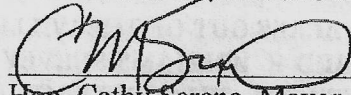
SECTION 1. The map and associated documentation, attached as Exhibit "A", formally defines the boundaries of the City of Double Horn and its extraterritorial jurisdiction.

SECTION 2. The City Secretary is directed to file a certified copy of this Ordinance in the office of the County Clerk of Burnet County, Texas, and in the official records of the City.

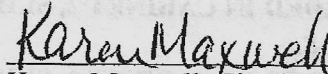
SECTION 3. This ordinance shall become effective immediately upon its passage.

ADOPTED AND APPROVED on this 14<sup>th</sup> day of March 2019 by a vote of the City Council of the City of Double Horn, Texas.

**CITY OF DOUBLE HORN, TEXAS**

  
\_\_\_\_\_  
Hon. Cathy Sereno, Mayor

**ATTEST:**

  
\_\_\_\_\_  
Karen Maxwell, City Secretary

**APPROVED AS TO FORM:**

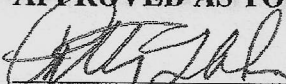
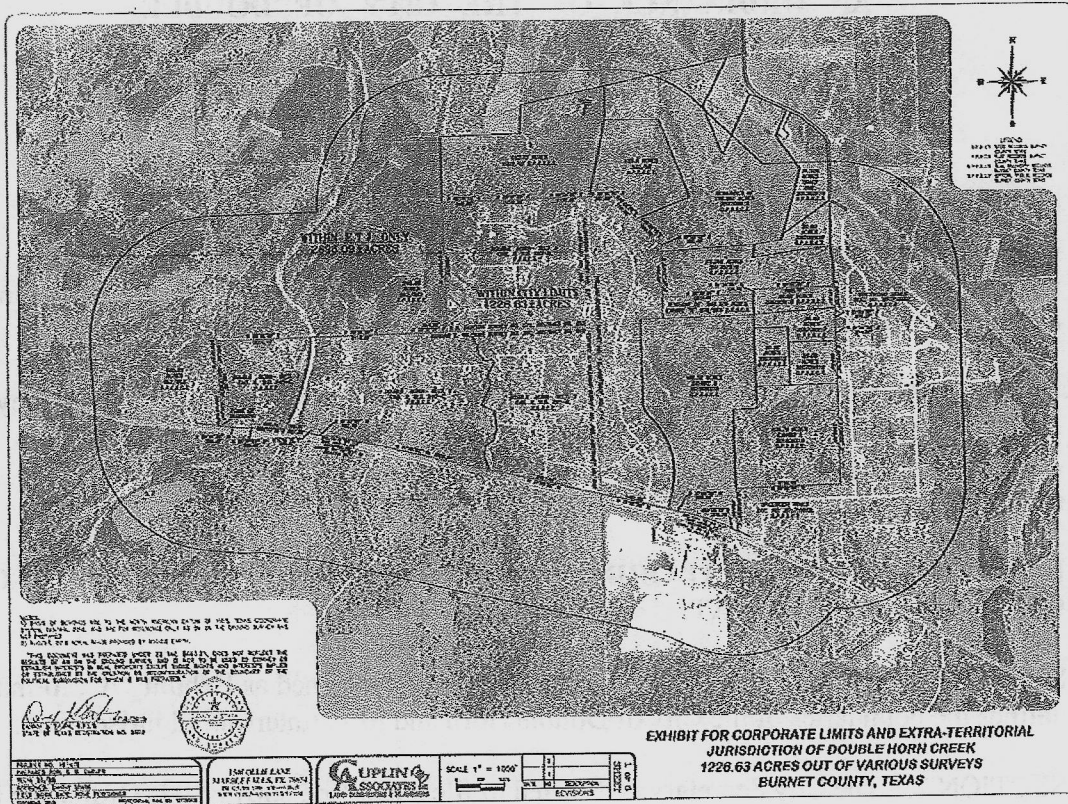
  
\_\_\_\_\_  
Patty L. Akers, City Attorney

Exhibit "A"



"THIS DOCUMENT WAS PREPARED UNDER 22 TAC §663.21, DOES NOT REFLECT THE RESULTS OF AN ON THE GROUND SURVEY, AND IS NOT TO BE USED TO CONVEY OR ESTABLISH INTERESTS IN REAL PROPERTY EXCEPT THOSE RIGHTS AND INTERESTS IMPLIED OR ESTABLISHED BY THE CREATION OR RECONFIGURATION OF THE BOUNDARY OF THE POLITICAL SUBDIVISION FOR WHICH IT WAS PREPARED"

BEING 1226.63 ACRES OUT OF THE WILLIAM ROBERTS SURVEY NO. 13, ABSTRACT NO. 714, THE EDWARD E. WILLIAMS SURVEY NO. 260, ABSTRACT NO. 945, AND THE N.M. DAWSON SURVEY NO. 271, ABSTRACT NO. 265, IN BURNET COUNTY, TEXAS, AND CONSISTING OF THE FOLLOWING:

- 1) DOUBLE HORN SUBDIVISION, SECTION 1, RECORDED IN CABINET 2, SLIDE 145C, PLAT RECORDS OF BURNET COUNTY, TEXAS.
- 2) DOUBLE HORN SUBDIVISION, SECTION 2, RECORDED IN CABINET 2, SLIDE 160C, PLAT RECORDS OF BURNET COUNTY, TEXAS.
- 3) DOUBLE HORN SUBDIVISION, SECTION 3, RECORDED IN CABINET 2, SLIDE 191A, PLAT RECORDS OF BURNET COUNTY, TEXAS.

- 4) **DOUBLE HORN SUBDIVISION, SECTION 4, RECORDED IN CABINET 3, SLIDE 163D, PLAT RECORDS OF BURNET COUNTY, TEXAS.**
- 5) **A REMNANT OF 565.379 ACRES TO KATHLYN N. TANNER, DESCRIBED IN EXHIBIT B OF VOLUME 316, PAGE 883, DEED RECORDS OF BURNET COUNTY, TEXAS,**
- 6) **A 20.00 ACRE TRACT TO THE CARRINGTON FAMILY PARTNERSHIP, LTD., DESCRIBED IN DOCUMENT NO. 200709919, OFFICIAL PUBLIC RECORDS OF BURNET COUNTY, TEXAS,**
- 7) **A 20.00 ACRE TRACT TO THE CARRINGTON FAMILY PARTNERSHIP, LTD., DESCRIBED IN DOCUMENT NO. 200709917, OFFICIAL PUBLIC RECORDS OF BURNET COUNTY, TEXAS,**
- 8) **A 20.00 ACRE TRACT TO THE CARRINGTON FAMILY PARTNERSHIP, LTD., DESCRIBED IN DOCUMENT NO. 200709918, OFFICIAL PUBLIC RECORDS OF BURNET COUNTY, TEXAS,**
- 9) **A 20.00 ACRE TRACT TO THE CARRINGTON FAMILY PARTNERSHIP, LTD., DESCRIBED IN DOCUMENT NO. 200709916, OFFICIAL PUBLIC RECORDS OF BURNET COUNTY, TEXAS,**
- 10) **A 100.74 ACRE TRACT TO SPICEWOOD CRUSHED STONE, LLC, DESCRIBED IN EXHIBIT A OF DOCUMENT NO. 201808310, OFFICIAL PUBLIC RECORDS OF BURNET COUNTY, TEXAS, AND**
- 11) **A 180.52 ACRE TRACT TO SPICEWOOD CRUSHED STONE, LLC, DESCRIBED IN EXHIBIT B OF DOCUMENT NO. 201808310, OFFICIAL PUBLIC RECORDS OF BURNET COUNTY, TEXAS**

**SAID 1226.63 ACRES FURTHER DESCRIBED BY METES AND BOUNDS AS FOLLOWS:**

*(The following 4 courses and distances are based on those of record in Cabinet 2, Slide 145-C, Plat Records of Burnet County, Texas)*

**BEGINNING** in the Northern Right of Way Line of Texas Highway 71, at the Southwest corner of said Double Horn, Section 1, the Southeast corner of a tract of land called 345.89 acres of record in Volume 662, Page 803, Real Property Records of Burnet County, Texas, and the Southwest corner hereof;

**THENCE** with the Eastern and Southern boundary lines of said 345.89 acre tract, the Western and Northern boundary lines of said Double Horn, Section 1, and the Western and Northern boundary lines hereof, the following four (4) courses and distances:

- 1) **N 02°06'02" W, a distance of 630.86 feet to a calculated point for angle point hereof;**
- 2) **N 04°15'03" W, a distance of 582.38 feet to a calculated point for angle point hereof;**
- 3) **N 03°15'24" W, a distance of 579.23 feet to a calculated point for the Westernmost Northwest corner hereof; and**



- 4) N 88°32'59" E, a distance of 2015.14 feet to a calculated point in a stream bed for the Northwest corner of Double Horn Section 2, a subdivision of record in Cabinet 2, Slide 160-C, plat Records of Burnet County, Texas, and an angle point hereof;

*(The following 2 courses and distances are based on those of record in Cabinet 2, Slide 160-C, Plat Records of Burnet County, Texas)*

**THENCE** with the Northern boundary line of said Double Horn, Section 2, and the Northern boundary hereof, the following two (2) courses and distances:

- 1) N 88°32'59" E, a distance of 2118.90 feet to a calculated point for angle point hereof; and
- 2) N 88°32'59" E, a distance of 744.29 feet to a calculated point at the Westernmost Southwest corner of Double Horn Creek Section 4, a subdivision of record in Cabinet 3, Slide 163-D, Plat Records of Burnet County, Texas, for a reentrant corner hereof;

*(The following 9 courses and distances are based on those of record in Cabinet 3, Slide 163-D, Plat Records of Burnet County, Texas)*

**THENCE** with the Western, Northern and Eastern boundary lines of said Double Horn, Section 4, and the Western, Northern and Eastern boundary lines hereof, the following (9) courses and distances:

- 1) N 01°36'03" W, a distance of 2762.72 feet to a calculated point for the Southwest corner of a tract of land called 193.73 acres of record in Volume 1009, Page 03, Official Public Records of Burnet County, Texas, and the Northernmost Northwest corner hereof;
- 2) N 88°26'12" E, a distance of 942.65 feet to a calculated point for angle point hereof;
- 3) N 88°27'25" E, a distance of 1119.39 feet to a calculated point for angle point hereof;
- 4) N 88°24'42" E, a distance of 1152.45 feet to a calculated point for the Southeast corner of said 193.73 acre tract, the Southwest corner of a tract of land called 125.0 acres of record in Volume 532, Page 06, Real Property Records of Burnet County, Texas, and an angle point hereof;
- 5) N 88°32'52" E, with the Southern and Southwest boundary lines of said 125.0 acre tract, a distance of 392.00 feet to a calculated point for angle point hereof;
- 6) S 46°42'39" E, a distance of 715.38 feet to a calculated point for the Southernmost Southwest corner of said 125.0 acre tract, and a northwesterly corner of the remnant of a tract of land called 138.961 acres of record in Document No. 200709913, Official Public Records of Burnet County, Texas, and an angle point hereof;
- 7) S 46°38'15" E, with the Southwest and Westerly boundary lines of said Remnant of 138.961 acres, a distance of 680.59 feet to a calculated point for an angle point hereof;
- 8) S 01°33'12" E, a distance of 252.49 feet to a calculated point for the Southwest corner of said remnant of 138.961 acres, the Northwest corner of a tract of land called 73.296 acres of record in Document No. 201702910, Official Public Records of Burnet County, Texas, and a point on line hereof; and
- 9) S 01°33'12" E, with the Western boundary line of said 73.296 acre tract, a distance of 962.36 feet to a calculated point for the Southwest corner of said 73.296 acre tract, the Northwest corner of a remnant of a 565.379 acre tract described in exhibit B of Volume 316, Page 883, Deed Records of Burnet County, Texas, and a reentrant corner hereof;

*(The following 3 courses and distances are based on those of record in Document No. 201702910, Official Public Records of Burnet County, Texas)*

THENCE with the Southern boundary lines of said 73.296 acre tract, the following three (3) courses and distances:

- 1) N 88°28'30" E, a distance of 1914.86 feet to a calculated point for a point in the Western boundary line of a 20.00 acre tract of record in Document No. 200709919, Official Public Records of Burnet County, Texas, the Northwest corner of said Remnant of 565.379 acre tract and a reentrant corner hereof;
- 2) N 01°26'20" W, a distance of 104.94 feet to a calculated point for the Northwest corner of said 20.00 acre tract in Doc. No. 200709919, Official Public Records of Burnet County, Texas, and a Northwesterly corner hereof; and
- 3) N 88°37'32" E, a distance of 1695.57 feet to a calculated point in the Western boundary line of Spicewood Trails, a subdivision of record in Document No. 201710002, Official Public Records of Burnet County, Texas, for the Northeast corner of said 20.00 acre tract in Doc. No. 200709919 and an angle point hereof;

THENCE with the Western and Northern boundary lines of said Spicewood Trails Subdivision, the following seven (7) courses and distances:

*(The following course and distance are based on those of record in Document No. 200709919, Official Public Records of Burnet County, Texas)*

- 1) S 01°22'27" E, a distance of 471.51 feet to a calculated point for the Northeast corner of a 20.00 acres tract of land of record in Document No. 200709917, Official Public Records of Burnet County, Texas, the Southeast corner of said 20.00 acres in Doc. No. 200709919, Official Public Records of Burnet County, Texas, and a point on line hereof;

*(The following 2 courses and distances are based on those of record in Document No. 200709917, Official Public Records of Burnet County, Texas)*

- 2) S 01°22'27" E, a distance of 378.27 feet to a calculated point for angle point hereof;
- 3) S 01°21'58" E, a distance of 314.02 feet to a calculated point for the Northeast corner of a 20.00 acre tract of land of record in Document No. 200709916, Official Public Records of Burnet County, Texas, the Southeast corner of said 20.00 acre tract in Doc. No. 200709917, Official Public Records of Burnet County, Texas, and an angle point hereof;

*(The following course and distance is based on those of record in Document No. 200709916, Official Public Records of Burnet County, Texas)*

- 4) S 01°21'58" E, a distance of 886.52 feet to a calculated point for the Northeast corner of a 100.74 acre tract of land described in Exhibit A of Document No. 201808310, Official Public Records of Burnet County, Texas, the Southeast corner of said 20.00 acre tract in

Doc. No. 200709916, Official Public Records of Burnet County, Texas, and an angle point hereof;

*(The following 3 courses and distances are based on those of record in Document No. 201808310, Official Public Records of Burnet County, Texas)*

- 5) S 01°30'20" E, with the Eastern boundary line of said 100.74 acre tract, a distance of 2105.58 feet to a calculated point for the Southeast corner of said 100.74 acre tract, a reentrant corner of said Spicewood Trails Subdivision and an angle point hereof;
- 6) S 88°09'56" W, a distance of 2192.66 feet to a calculated point in the Eastern boundary line of a 180.52 acre tract described in Exhibit B of said Doc. No. 201808310, Official Public Records of Burnet County, Texas, for the Westernmost corner of said Spicewood Trails Subdivision and a reentrant corner hereof; and
- 7) S 01°26'27" E, a distance of 896.69 feet to a calculated point in the Northern Right of Way line of said Texas Highway 71, for the Southwest corner of said Spicewood Trails Subdivision, the Southernmost corner of said 180.52 acre tract and the Southernmost corner hereof;

THENCE along the Northern Right of Way line of said Highway 71, the following thirteen (13) courses and distances:

*(The following 3 courses and distances are based on those of record in Document No. 201808310, Official Public Records of Burnet County, Texas)*

- 1) N 64°33'33" W, a distance of 275.09 feet to a calculated point for Point of Curvature of a curve to the left;
- 2) along said curve, with a radius of 3909.72 feet, a delta angle of 12°33'07" and a chord length of 854.81 feet bearing N 70°53'10" W, an arc distance of 856.52 feet to a calculated point for the Point of Tangency of same
- 3) N 77°06'20" W, a distance of 406.93 feet to a calculated point for the Southwest corner of said 180.52 acre tract and the Southeast corner of said Double Horn Creek, Section 4, and an angle point hereof;

*(The following course and distance are based on those of record in Cabinet 3, Slide 163-D, Plat Records of Burnet County, Texas)*

- 4) N 77°05'58" W, a distance of 1481.86 feet to a calculated point for the Southeast corner of said Double Horn Creek, Section 4, the Southeast corner of Double Horn, Section 3, a subdivision of record in Cabinet 2, Slide 191-A, Plat Records of Burnet County, Texas, and an angle point hereof;

*(The following course and distance are based on those of record in Cabinet 2, Slide 191-A, Plat Records of Burnet County, Texas)*

- 5) N 77°09'00" W, a distance of 2401.43 feet to a calculated point in a creek bed for the Southwest corner of said Double Horn, Section 3, the Southeast corner of said Double Horn, Section 2 and an angle point hereof;

**(The following 5 courses and distances are based on those of record in Cabinet 2, Slide 160-C, Plat Records of Burnet County, Texas)**

- 6) N 77°09'03" W, a distance of 2839.88 feet to a calculated point for the Point of Curvature of a curve to the left;
- 7) along said curve with a radius of 5819.39 feet, a delta angle of 6°59'25", and a chord of 709.54 feet bearing of N 80°40'37" W, an arc distance of 709.98 feet, to the point of tangency of same;
- 8) N 84°07'57" W, a distance of 192.76 feet to a calculated point for angle point in said Highway and an angle point hereof;
- 9) N 72°42'10" W, a distance of 306.37 feet to a calculated point for angle point in said Highway and an angle point hereof;
- 10) N 84°12'20" W, a distance of 345.01 feet a calculated point in a stream bed for the Southwest corner of said Double Horn, Section 2, and the Southeast corner of said Double Horn, Section 1, a point on line hereof;

**(The following 3 courses and distances are based on those of record in Cabinet 2, Slide 145-C, Plat Records of Burnet County, Texas)**

- 11) N 84°12'20" W, a distance of 552.34 feet to a calculated point for angle point in said Highway and an angle point hereof;
- 12) S 84°37'03" W, a distance of 306.08 feet to a calculated point for angle point in said Highway and an angle point hereof;
- 13) N 84°11'35" W, a distance of 509.40 feet to the POINT OF BEGINNING and calculated to contain 1226.63 acres within the City Limits.



**FILED AND RECORDED**  
OFFICIAL PUBLIC RECORDS

*Janet Parker*

Janet Parker, County Clerk

Burnet County Texas

3/15/2019 10:18:41 AM

FEE: \$50.00

201902535

ORD

