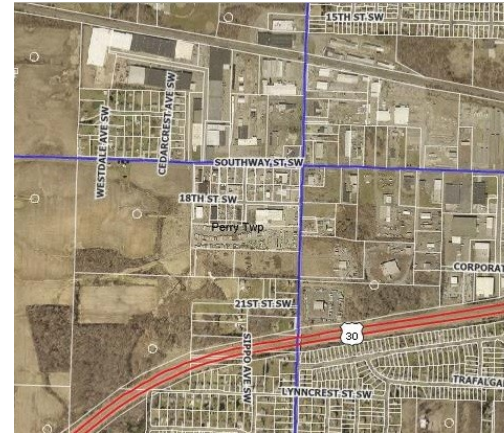


FOR SALE

Prime Land Development

4309 Southway Street, Canton, Ohio 44706 (Stark County Ohio—US Route 30 Visible)



PROPERTY HIGHLIGHTS

- Southway SW frontage
- US 30 visible
- Re-zoning
- Retail
- Light Industrial
- Commercial Development
- Utilities in place
- Close proximity to major intersection

BUILDING INFORMATION

Property Description: Here's your chance to Develop Prime Real Estate along US Route 30. Your Vision can become a reality with this 91 acre acquisition. Visible from US Route 30 and frontage on Southway Street SW. Ready for re-zoning by Perry Township, this property would appeal to Developers, Builders, Healthcare Facilities, etc. Call today for more details.

Location Description: Frontage on Southway SW and backs up to US Route 30, All Utilities are in place for immediate land development.

Zoning: Current - Agricultural

CONTACT INFORMATION

Kolp Real Estate

328 Cleveland Av NW, Canton, OH, 44702

Dave Berens (330) 412-1005 / DtBerens@Gmail.com

General Information:

Price: \$2,760,000

Acres: 91.81

Parcel Numbers:

4301188

4316520

4311037

4316412

County: Stark

City: Canton, Ohio/Perry Twp.

**Information is from reliable sources but is not guaranteed and subject to change. Main photo above is aerial shot which includes areas outside of property line. Contact Agent for updates.*

