

St. Paul A.M.E. Church

Women's Day

Rise up! Morning is Coming

- Psalm 30:5^b



Sunday, November 17th, 2024

The Rt. Rev. Samuel L. Green, Presiding Prelate 1st District

The Rev. Howard H. L. Dill, Presiding Elder

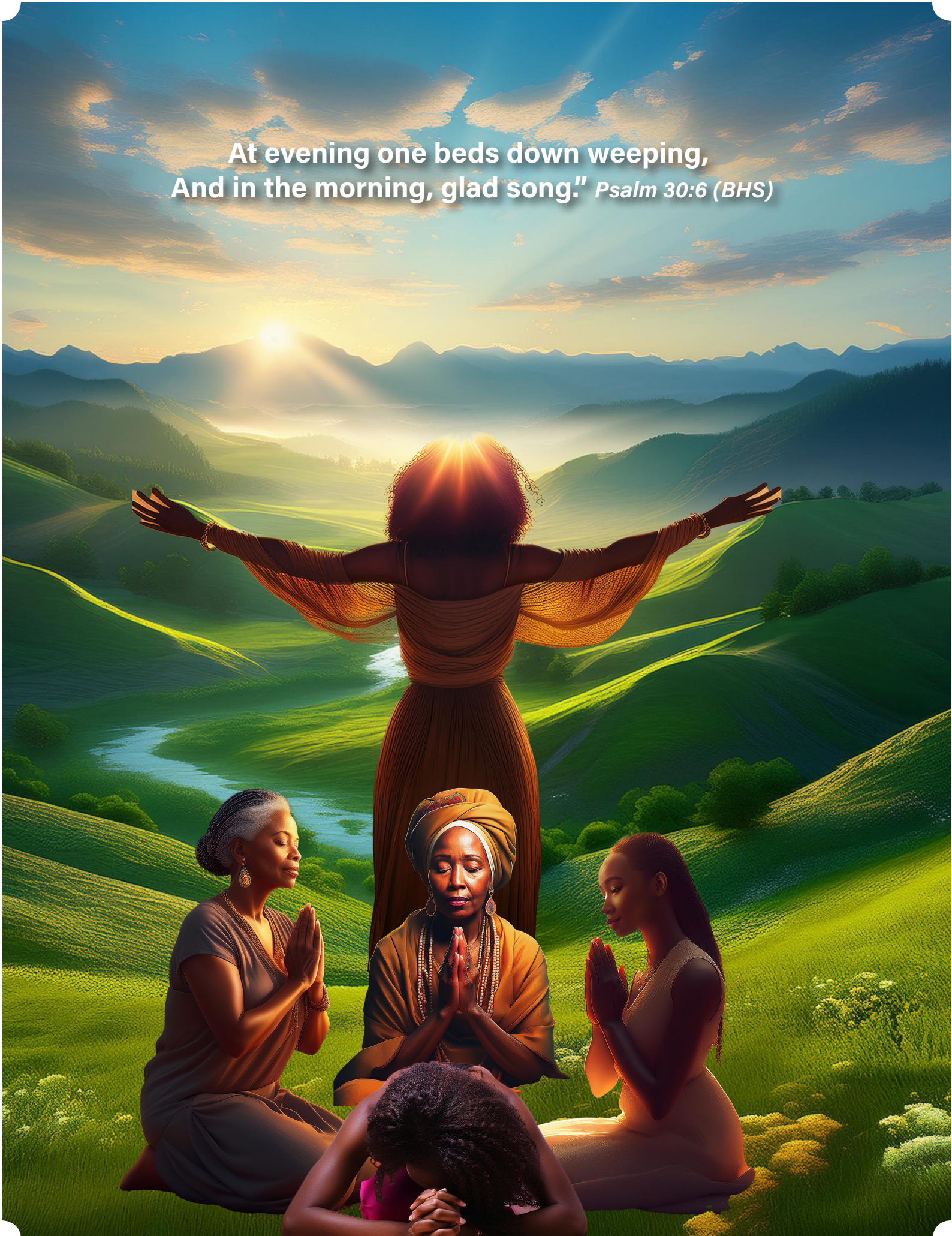
The Rev. Nicholas Genevieve -Tweed, Pastor

Streamed on YouTube: www.youtube.com/@st.paulameaudio2189

or Facebook: www.facebook.com/stpaulamebermuda/



At evening one beds down weeping,
And in the morning, glad song." *Psalms 30:6 (BHS)*





Rise up! Morning is Coming

St. Paul African Methodist Episcopal Church **Message From The Pastor**

Sunday, November 17th, 2024

“But a moment in His wrath,
Life in His pleasure.
At evening one beds down weeping,
And in the morning, glad song.” Psalm 30:6 (BHS)

Rise Up! Morning is Coming

I would like to extend greetings to the Women's Day 2024 team as we celebrate the culmination of this Women's Day season.

The theme for this year “Rise Up! Morning is Coming” is extracted from Psalm 30 which is understood to be a Song of Thanksgiving reflecting the experience of going from security and prosperity to near death only to be delivered by God. It is I suspect precisely this disruption to feelings of security and prosperity brought on by unanticipated challenges- in this case near death challenges- which induces in the life of the believer a sense of helplessness as one is confronted with the uncertainty of life and then to be delivered, healed, and restored that gives rise to feelings of thanksgiving and praise to God for deliverance and restoration which makes this Psalm resonate with the lived experience of those who share this experience.

It is the hope that this Women's Day has created a space in which each of us who have made, or who share in this journey will take the time and opportunity to contemplate our experience with a view toward deepening our faith. As we celebrate together despite the challenges we have faced, or perhaps continue to face, this Psalm and this time together will give us cause to pause and take a moment to thank God for deliverance, healing, restoration. If there are those still journeying through what may feel like an unending night of challenge, it is hoped that this shared moment will be a source that will renew hope, strengthen our faith, and create in us a living expectation in the fidelity of a God who will not abandon us but will journey with us through the night enabling us to reach the morning of renewed hope, deeper faith, and produce in us a transformed witness.

I pray for a powerfully renewing and life-transforming Women's Day experience that will cause us to Rise Up in anticipation of the Morning that will come.

Keep the Faith!

Rev. Nicholas Genevieve-Tweed

Rise up! Morning is Coming

Greetings From the Women's Day Committee 2024

Greetings to our St. Paul A.M.E. Church family, friends, and visitors on this Women's Day 2024.

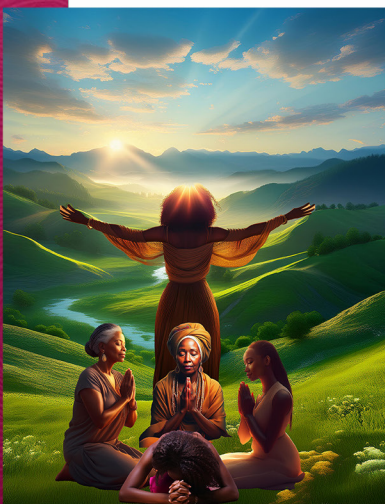
As we reflect on our theme "*Rise Up! Morning is Coming*" which was inspired by Psalm 30 verse 5^b, "Weeping may tarry for the night, but joy comes with the morning", let us remember that even though there is so much chaos in the world today, that even though we may face insurmountable challenges, God's Word promises us there are better days ahead. Celebrating women on this special day, helps us to refocus, refuel and empowers us to press on.

If you came here today overwhelmed by the circumstances of life, it is our prayer that you will be spiritually transformed by something said or done. We are overjoyed with your presence here today and pray this worship experience renews your soul, uplifts your spirits and gives you hope.

May you leave here encouraged, inspired and empowered to Rise Up to the joy of a new morning ahead of you.

May God Bless You!

The St. Paul A.M.E. Women's Day Committee



Stewards:

*Sis. Eunice Jones, Dr. The Hon. Neletha Butterfield,
Sis. Jeannaire Christopher- Peters, Sis. Paula Fray, Sis. Lynell Furbert,
Sis. Andrea Isaac, Sis. Nadine Lapsley-Dyer, Sis. Diane Outerbridge,
Sis. Charlene Tyrrell & Sis. Lanette Vassell*

Rise up! Morning is Coming

About the Speaker

Sis. Donna-Lee Chandler-Smith



Donna-Lee Chandler-Smith is a dedicated servant leader committed to meeting needs and advancing ministry. A lifelong member of the African Methodist Episcopal Church, she has served as a delegate to the General Conference, District Conference, Annual Conference, Connectional Lay Biennial, and District Annual and Mid-Year Conventions. Donna-Lee has held significant lay leadership roles at every level, including President, Director of Lay Activities, and Director of Public Relations within the Annual Conference. In the First Episcopal District, she has served as First Vice President and Director of Public Relations, and in the current administration, she has been appointed Chairperson of the Officers and Organization Effectiveness Committee. She has also contributed

to the Executive Board of the Frank C. Cummings Scholarship Committee as Secretary and remains an active member-at-large.

At the Connectional level, Donna-Lee has served on the Episcopal Committee, one of the denomination's most influential committees, responsible for assigning bishops to districts. She has also been part of the General Conference Commission of the AME Church. For the 52nd Quadrennial Session of the General Conference this past August, she chaired the Commission Daily Schedule Committee. Additionally, Donna-Lee is a member of the Board of Directors for First District Self-Help Inc., a 501(c)(3) nonprofit organization within the First Episcopal District of the AME Church.

In her professional career, Donna-Lee brings her leadership skills to her role as a Technical Operations Manager in the international business sector. She ensures effective process management within her Operations Team, oversees compliance reporting, supports audits, and maintains data quality and adherence to statutory requirements. Her key responsibilities include building strong relationships with stakeholders, delivering accurate and detail-oriented work, and driving operational excellence through process improvements and performance monitoring.

To deepen her commitment to organizational leadership and ministry, Donna-Lee holds a BA in Business with a concentration in Organizational Leadership and is certified in Non-Profit Management. Her dedication to service and her professional expertise fuel her impactful work within the A.M.E. Church and beyond.



“Let Us Worship the Lord with Reverence!”

The Twenty-Sixth Sunday After Pentecost

Season: After Pentecost

Color: **Green**

THE ORDER OF SERVICE

THE WORSHIP LEADER

Sis. Carmen Roberts

***THE GATHERING**

The St. Paul Ladies Praise Team

****THE INTROIT**

“Blessing Glory and Honor” (Women of Gospel)

***THE OPENING SONG**

“Again I Say Rejoice” (Houghton)

THE DOXOLOGY

#647 *“Praise God from Whom All Blessings Flow”* (Old 100)

****THE CALL TO WORSHIP**

Sis. Carmen Roberts

“Morning Does Come” ©NGT2024

L: Lord, we gather to exalt your Holy name, for you have gathered us up, and you have protected us from hurt, harm, and danger.

P: **We cried unto the Lord and You healed us.**

L: Lord, we gather to give thanks, for you have blessed us to journey through the night, and to be embraced by the morning.

P: **We cried unto the Lord and You delivered us.**

L: Lord, in Your Love You empowered us to be mountain strong, without the strength of Your presence we would not have endured through the night.

P: **We cried unto the Lord and You kept us from stumbling.**

ALL: **Let us give thanks for the night, because without the night we could not celebrate the gift and wonder of the morning, we lift our hearts, hands, and tongues in praise and thanksgiving, as we testify through worship—
MORNING DOES COME!**

***THE HYMN OF PRAISE**

#92 *“Praise Him! Praise Him!”* (Allen)

*****THE INVOCATION**

Rev. Judith Gardner

THE CHORAL RESPONSE

“Fill Me Up” (Cobbs)

***THE MINISTRY OF MUSIC**

St. Paul A.M.E. Women’s Day Choir

“A Little More Jesus” (Campbell)

*****THE SCRIPTURE**

Psalm 30

Sis. Nia Burt

****THE GLORIA PATRI**



THE WOMEN'S DAY LITANY

Sis. Jeannaire Christopher-Peters

Rise Up! Morning is Coming! ©NGT2024

Leader: We are assembled to stand as witnesses to God's sustaining Love as we Rise Up in praise and thanksgiving to a God who has kept us as we journeyed through the night.

People: We each have a testimony of how God has journeyed with us through many nights, as we faced many challenges in personal lives, our families, our places of work, that at times caused us to wonder if we could last through the night.

Leader: We as Sisters in the faith join in celebration as we look back at the many ways You, O Lord, empowered and equipped us to Rise Up- comforting us in moments of distress, healing us in moments of sickness, restoring us in moments of brokenness, and strengthening us in moments of weakness.

People: We take courage and inspiration from the lived witness of the Sheroes- our grandmothers, mothers, sisters- whose lives provide models that exemplify how Women of faith have journeyed through nights of adversity, kept the faith, and Risen to new mornings of victory and hope.

Leader: We give thanks, as we remember, mighty Women of God, who have left a legacy of unwavering faithfulness to God in service to families, service to church, and witness to our community.

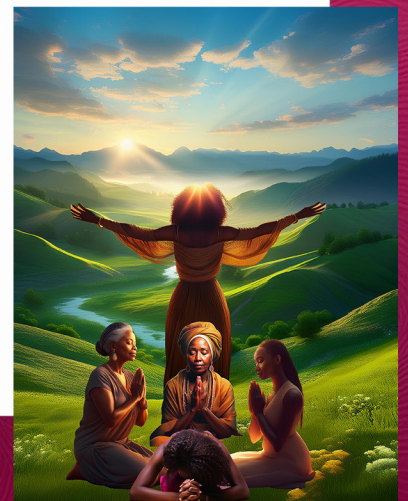
People: Continue to bless our faithfulness, as we Rise Up, having been strengthened by our having been tested, renewed by Your grace, filled with Your Love, fortified through Your mercy, as we encourage one another with our witness, and celebrate with one another as we anticipate the morning that will come.

Leader: We as Women, as people of faith let us prepare for the morning by working to strengthen our faith through a renewal of our prayer and devotional lives, fill us afresh with Your Holy Spirit, make Yourself manifest in our worship and witness, make us instruments to encourage, strengthen one another as we press toward the morning.

People: Help us O Lord, to continue to Rise Up in our relationships one with another, help us to Rise Up in our families, to Rise up in our church and communities, use the night to mold and shape us so that we may be strengthened not broken as journey toward our destiny as morning approaches.

Leader: Prepare us now, to embrace the morning with joy and thanksgiving, let us celebrate the journey we have taken to this place, not because it has been easy but because we have endured it, not because it has not had challenges but because we have overcome them, not because we have completed it but because it has prepared us to continue with determination and faithfulness, in celebration and praise trusting that as we Rise morning will come.

ALL: Come celebrate, for we stand as those who have risen, renew our faith, restore our strength, as we continue to prepare ourselves, trusting that the bitter challenges of the night will pass and we will be kissed by the fresh warmth of a new day, let us be encouraged by what we have overcome, let us continue to work, to pray, to witness as we declare to the heavens, "At evening one beds down weeping, And in the morning, glad song. As for me..." "Never will I stumble," for "Lord, in your pleasure You made us stand mountain strong," so
RISE UP, MORNING IS COMING!



THE WELCOME

Sis. Nadine Lapsley-Dyer
“What A Mighty God We Serve” (Women of Gospel)

THE MINISTRY OF STEWARDSHIP

Rev. Nicholas Genevieve-Tweed
“Running Over” (Pace)

****THE OFFERTORY**

“Give Thanks” (Moen)

*****THE MINISTRY OF MUSIC**

St. Paul A.M.E. Women’s Day Choir
“Amazing” (World Harvest Church)

*****THE SPECIAL PRAYER**

“I Give Myself Away” (Unknown)

Rev. Judith Gardener

*****THE PRAYER RESPONSE**

“God Is” (Cleveland)

THE INTRODUCTION OF SPEAKER

Sis. Ariana Caines

THE MINISTRY OF MUSIC

St. Paul Ladies Praise Team
“It Ain’t Over” (Brown-Clark)

******THE WOMEN’S DAY MESSAGE**

Sis. Donna-Lee Chandler-Smith

***THE INVITATION**

Rev. Judith Gardner
(Please do not leave during the invitation)

THE BENEDICTION & BLESSING OF THE FOOD

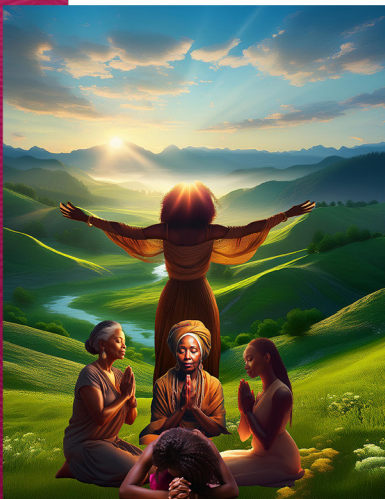
Rev. Judith Gardner

THE RECESSIONAL

St. Paul A.M.E. Women’s Day Choir
“A Little More Jesus” (Campbell)

Thank You

The Women’s Day Committee would like to thank everyone who helped to make the Women in the Arts Concert and the Women’s Day 2024 a great success.
“To God Be The Glory, Great Things He Has Done”



- * Worshipers may enter.
- ** The Congregation is to stand.
- *** No one should leave the Sanctuary or walk unless they are, either joining the church or assisting someone to join the church.
- **** No standing or walking

ANNOUNCEMENTS

The Women's Day Commitment is \$150.00

The Women's Day Luncheon will follow immediately after the Morning Worship Experience. Tickets are \$25.00

The Rose Bell WMS are accepting names for Christmas Hampers *via email only*. Requests should be submitted to rosebellwms@gmail.com

Advent Bible Study - a four week Advent Bible Study via Zoom will begin on Wednesday November 20th at 6:30pm. If you wish to participate, please contact the Church Office. **You do not have to be a member of St. Paul to join.**

REMINDER: *Rose Bell WMS* will be having their monthly meeting Monday, November 18th at 5:30 pm via zoom.

Save these Dates

The Bermuda Annual Conference Advent Service Thursday, December 5th at 7:00 pm at Bethel A.M.E. Church. Bishop Samuel L. Green will be the Advent Preacher.

St. Paul A.M.E. Annual Christmas Concert - Sunday, December 15th. Stay tuned for further information.

Additional Information

Tithes and Offering - please use the following guidelines for your contributions: Payments should be made to St. Paul A.M.E. Church **HSBC Account #010-369 007-002**.

Be sure to include your name, i.e., John Doe, and description and purpose of the funds: e.g., Tithes, Offering, alternatively you can drop your tithing envelopes at the church.

Direct Deposit for **Count Me In – St. Paul A.M.E. Church Clarien Bank A/C # 4710911505**. The office is open Monday, Tuesday, Wednesday and Friday from 11 a.m. to 2 p.m.

The Office is closed on Thursdays.

THE SICK AND SHUT-IN MEMBERS

Sis. Elvia Eve, Sis. Maybelline Fubler

THE MEMBERS IN NURSING HOMES/HOSPITAL

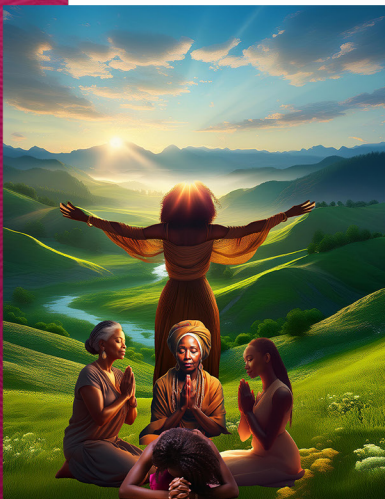
Sis. Ivy Woods, Sis. Sheila Looby- *C. C. KEMH*

Sis. Andrea Tucker - *MSWSR, Devonshire*

Sis. Beulah White – *Sylvia Richardson Care Facility*



WOMEN'S DAY MESSAGE POINTS

This image shows a blank sheet of white paper with horizontal ruling lines. The lines are evenly spaced and run across the width of the page. There are no margins, text, or other markings on the paper.

BOARDS ON DUTY

Officers:- (Nov. 17th):- Bro. Ed Dyer, Sis. Thelma Trott, Sis. Eunice Jones, Lynell Furbert, Paula Fray.

(Nov. 24th):- Bros. Ed. Dyer, Ted Darrell, Sis. Eunice Jones, Andrea Isaac, Charlene Tyrrell.

Ushers:- (Nov. 17th):- Sis. Ruby Walker, Kimberley Tweed, Doreen Gardner, Joan Ming, Janice Khan, Bro. Reginald Hewey.

(Nov. 24th):- Bro. Eugene Creighton, Sis. Lynell Furbert, Carolyn Cooper, June Pitt, Donna Joell, Marionette Furbert, Kharizmah Daniels.

OPPORTUNITIES FOR MINISTRY & STUDY

BIBLE STUDY (Via Zoom) Wednesdays 6:30 pm

S.U.R.G.E. Ages 4 -12 during morning worship

YPD- Mother Sunbeams & Allen Stars 6:30 - 8:30pm Fridays

A Woman's Worth

A Woman's worth is a treasure you see
It's not hard to explain
Though she was made from the rib of the man
She stands tall midst love or pain

A Woman's worth is a gem you see
She's not sent to toll in vain
With her hands to mold each little life
From that she won't refrain

A Woman's worth is loving and caring
Its hope and understanding too
And to be a woman is the most precious gift
That GOD has bestowed on you

A Woman's worth is eager to serve
No matter friend or foe
And still she chooses to serve the LORD
For what better path can she go?

By Joy Wilson-Tucker ©1979





59 Court Street
Hamilton, Bermuda HM 12
P: 292-0505
E-mail: stpaulamebda@gmail.com
Website: www.stpaulamechurch.org

Programs Designed & Printed by St. Paul A.M.E. Church, Bermuda ©