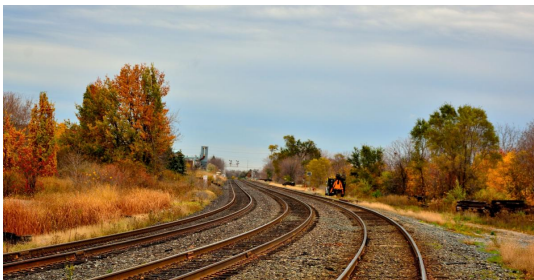




## KYTC: Monthly Updates and Insights

### December 2024



#### Gov. Beshear Announces \$7.5 Million Investment for 8 Railway Projects to Support Economic Growth

Today, Gov. Andy Beshear announced a \$7.5 million state investment for 8 Kentucky railway projects to maintain and enhance existing infrastructure. The projects were selected to retain and attract new business, bringing more economic opportunity to Kentuckians and the state.

[Read Full Article](#)



#### On the Front Lines: Influencing Construction Site Safety

No one has more influence on construction site safety than frontline supervisors, also known as foremen. Their impact on a project's overall success cannot be overstated—and that's particularly true for safety. But those responsibilities are a heavy burden given the dangers of working in our industry.

[Read Full Article](#)

## Construction Can Look to Gen Z and Technology to Sustain Talent Pipeline

With a documented labor shortage in construction and an abundance of construction projects, construction business leaders in need of growing their workforce have an opportunity to tap into Gen Z to help build and sustain their talent pipelines over the long term.

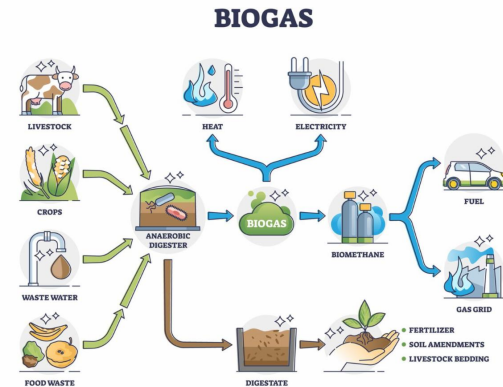
[Read Full Article](#)



## Biogas and Renewable Energy: A Growing Opportunity for the Construction Industry

As the global shift toward renewable energy intensifies, biogas is emerging as a powerful yet underutilized energy source. While wind and solar have dominated the renewable landscape, biogas offers unique benefits in addressing environmental concerns, particularly through its ability to repurpose waste into usable energy.

[Read Full Article](#)



## ABOUT CEI DBE SUPPORTIVE SERVICES

The goal of the DBE Supportive Services Program is to boost the presence of certified DBE contractors and consultants in KYTC projects, increasing the dollar percentage allocated to DBEs.

[CONTINUE READING](#)

CEI DBE SUPPORTIVE  
SERVICES

[SEND US A MESSAGE](#)



CONNECT WITH US!