

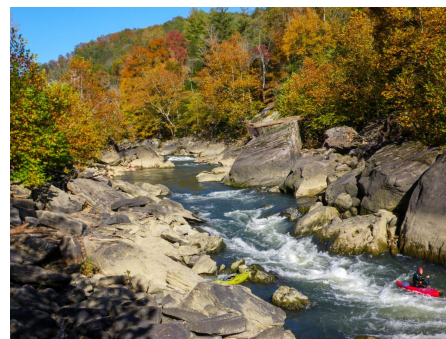


# KYTC Monthly Brief: News, Updates & Insights August 2025



## Team Kentucky Joins New Bridge Height Awareness Campaign: 'Check Your Height, Know It's Right'

## Multi-state safety effort aimed at helping drivers better navigate low bridges ...

[Read Read Full Article](#)

## Gov. Beshear Announces \$5.7 Million Investment for 15 Riverport Projects To Boost Kentucky's Waterway Economy

State funds target infrastructure improvements, job creation, and growth at public riverports... [Read Full Article](#)



## Construction Executive Free Webinars

Please click [REGISTER](#) or click on the links below to register:

[Aug. 20, 2025 - Droning On: What Will \(and Won't\) Fly for the Future of Drones in Construction](#)

[Sept. 10, 2025 - Grow Your Contractor Business With Modern Mobile Technology Strategies and Tools](#)

[Oct. 8, 2025 - Construction Executive's 2025 Q3 Construction Economic Update and Forecast](#)

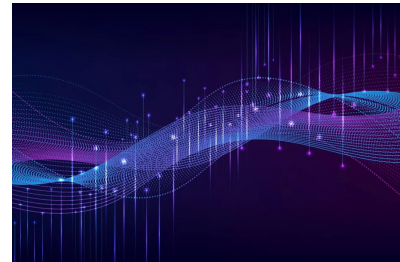
Disclaimer: The free webinars from Construction Executive are not affiliated with DOT or CEI DBE Support Services. They are shared for informational purposes only.

---

### Construction Hiring Remains Subdued in June

Contractors have been slow to lay workers off over the past six months, but they've also been slow to hire...

[Read Full Article](#)



### CEI DBE SUPPORTIVE SERVICES

The goal of the DBE Supportive Services Program is to boost the presence of certified DBE contractors and consultants in KYTC projects, increasing the dollar percentage allocated to DBEs.

[CONTINUE READING](#)

## CEI DBE SUPPORTIVE SERVICES

[SEND US A MESSAGE](#)

CEI | 399 S. Spring Ave Suite 108 | St. Louis, MO 63110 US

[Unsubscribe](#) | [Update Profile](#) | [Constant Contact Data Notice](#)