

Capability Statement



***“We Rise High
Above the Rest”***



Contact Us

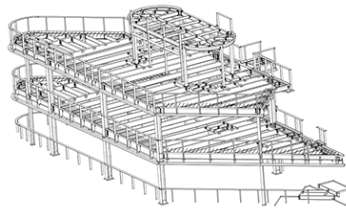
Lisa Cundiff, Treasurer
4558 Knopp Avenue
Louisville, KY 40213
Office: (502) 366-9133
Fax: (502) 366-9957
info@cundiffsteel.com
www.cundiffsteel.com

Company Overview

Cundiff Steel fabricates and erects structural and miscellaneous steel. The Company was started in 1994 by Pat Cundiff. The Company is a Woman-owned structural steel company that delivers a higher quality product. They are located in Louisville, Kentucky and service the contiguous 48 United States and Canada.

Services

- Process:
 - Design & Fabrication of Structural & Miscellaneous Steel
- Building/Tools
 - 5 ton overhead cranes
 - Angle master 2-axis punch with shear
 - 3-axis programmable CNC Beam Line
 - Multiple Saws
 - Temperature-controlled Paint Facility
 - 30,000sqft Manufacturing Facility
- Parts
 - Clip Angles
 - Columns
 - Handrails
 - Platforms
 - Stairs
 - Trusses
 - Grating
 - Beams
 - Misc Steel



Specialized Equipment

- Broderson Carry Deck Crane
- 32' Scissor Lifts
- Automated Beam Line
- Automated Angle Line
- Paint Booth
- High Definition Plasma CNC Burn Table
- CNC Lincoln Python Material Line



Past Projects

- UPS Worldport - 2000
- UPS Worldport Expansion - 2008
- KentuckyOne Health Medical Center Jewish South
- Louisville Collegiate School
- Owsley Park Track & Soccer Field
- Cabela's
- BassPro Shops
- Multiple Projects University of Louisville
- Commercial, Industrial, & Institutional Buildings
- Hospitals/Medical Complexes

Key Differentiators

- Follows American Welding Society (AWS) Guidelines
- AISC Certification
- Erectors & Fabricators average 15 years' experience

Codes & Certifications

DUNS: 929592376
NAICS: 238120, 331210,
332312, 423510



AISC
CERTIFIED
FABRICATOR



ACCREDITED
BUSINESS



certified
WBENC
WOMEN'S BUSINESS ENTERPRISE