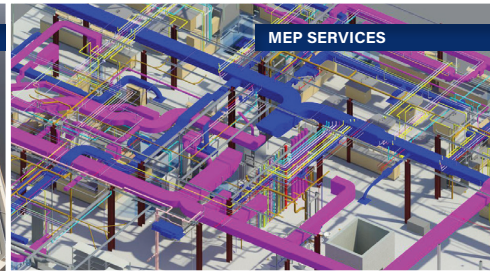


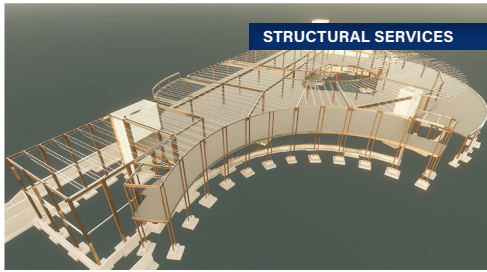
CAPABILITY STATEMENT



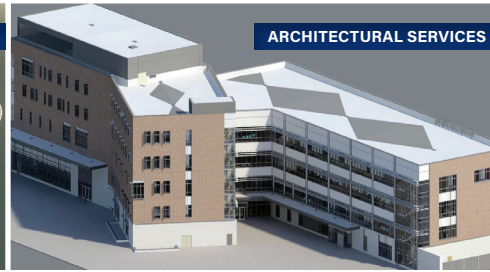
BIM SERVICES



MEP SERVICES



STRUCTURAL SERVICES



ARCHITECTURAL SERVICES

Austell A Engineering is a DBE certified engineering design solutions provider.

We help clients meet their Engineering objectives by providing the required resources to meet their short and long-term Engineering requirements related to:

- **BIM SERVICES**
- **ARCHITECTURAL SERVICES**
- **STRUCTURAL SERVICES**
- **MEP SERVICES**

CORE COMPETENCIES

- ✓ We are **AutoCAD** and **Revit** based for all of our engineering disciplines.
- ✓ We provide **dynamic, exceptionally intelligent** building information modeling (BIM) from our robust additions to the standard MEP content provided by Revit.
- ✓ Austell A Engineering's proprietary MEP content, along with its well-established architectural and structural modeling, provides clients with **extremely data rich 3D models** integrating all engineering design disciplines.
- ✓ Austell A Engineering employs BIM on **all new construction projects, additions, and renovations**.
- ✓ A dedicated Project Manager acts as a single source of contact to ensure **consistency and adherence to your company standards**.
- ✓ Austell A Engineering has partnered with a company abroad to allocate additional time to projects and **ensure timely project deliverables**.

PAST PERFORMANCES

- **GLOBAL EAGLE ENTERTAINMENT**
- **GLOBETROTTERS ENGINEERING**
- **GENERAL ELECTRIC (GE), CHICAGO, IL**
- **SRI TECHNOLOGIES, SCHAUMBURG, IL**
- **CUHACI & PETERSON ARCHITECTS INC., ORLANDO, FL**
- **INGENUITY ENGINEERS, ORLANDO, FL**
- **B&A CONSULTING ENGINEERS, DECATUR, GA**

COMPANY DATA

DBE CERTIFIED IN ALL 50 STATES
MBE CERTIFIED IN ILLINOIS
VOSB SBA CERTIFIED

NAICS CODES:

237310 - Highway, Street, & Bridge Construction
541340 - Drafting Services
541690 - Other Scientific & Technical Consulting

CAGE CODE: 9U569

INDUSTRIES SERVED

BUILDING CONSTRUCTION

- Hotels & Resorts
- Commercial Buildings
- Institutional Buildings
- Healthcare Buildings
- Retail Buildings

INFRASTRUCTURAL

- Airport Designs
- Roads & Highways
- Bridge Designs
- Rail Engineering

GOVERNMENT

- Eglin Airforce Base in Florida



DIFFERENTIATORS

Austell A Engineering has teamed up with a company in India to collaborate on projects worldwide and around the clock, to meet tight project deliverables and exceed client expectations.

CONTACT INFO

Austell A Engineering, LLC
Michael Austell, Owner | CEO
312.428.1833
austell.a.engineering@gmail.com