

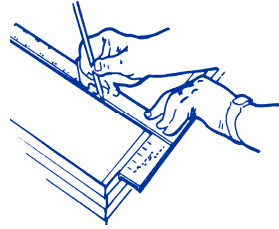
# Stud Hugger™ Edge-Grip Installation:

For Vinyl Pre-finished or Field Painted Square-edge Drywall

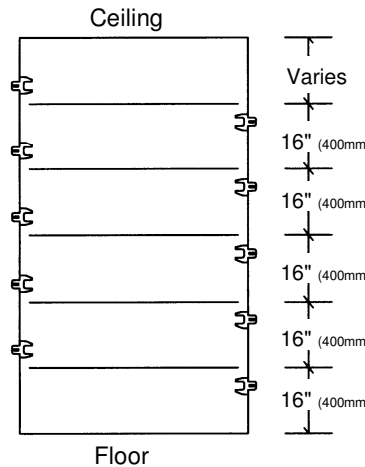


Millions in use!

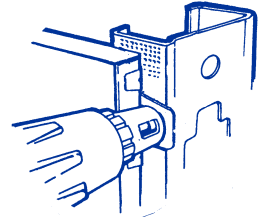
1



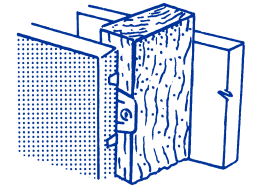
Trim Panel to proper height  
Layout back of panel by drawing Layout Lines at 16" (400mm) intervals  
(Lines can be carried down sides of Stacked panels with a chalk line)



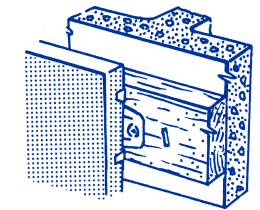
Locate **Stud Hugger** Edge Clips above the line on one side and below on the opposite side.  
(Staggered clip layout creates a tongue & groove panel joint)



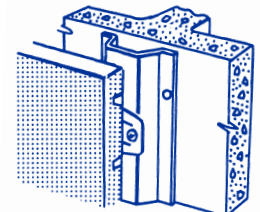
Steel Stud



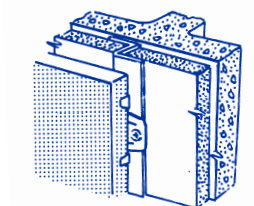
Wood Stud



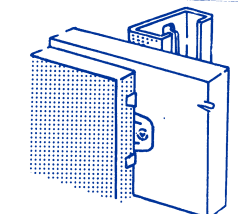
Wood Furring



Steel Furring

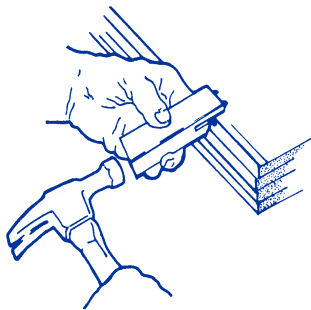


Z-Metal Furring



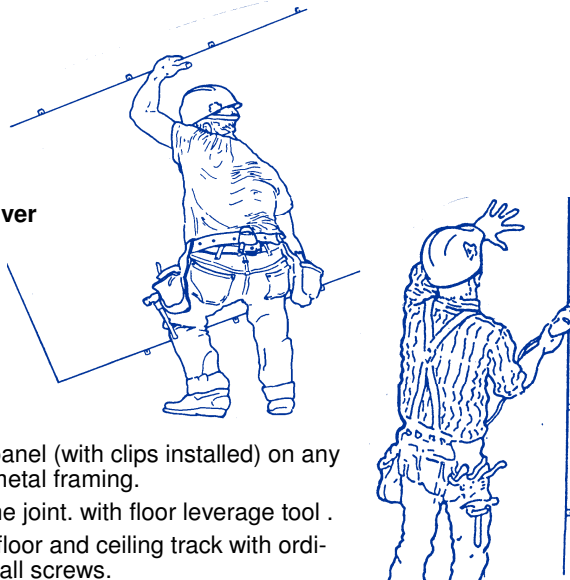
Double Wall

2



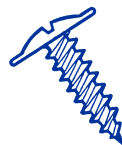
Seat the clips with the **Cymax Clip Driver**  
(Use care not to damage panel edge)

3



Position panel (with clips installed) on any wood or metal framing.  
Tighten the joint. with floor leverage tool .  
Screw to floor and ceiling track with ordinary drywall screws.

4



Use **Cymax Ultra-Thin** screws to secure one series of clips.  
(Only one series of clips is screwed to the framing)  
Clips on butting panel simply slide behind the fixed panel



**Leaf-Spring** flanges distort when clips are installed to guarantee rock solid partitions with "Lock-Washer" joints)

A few adhesive dabs on center studs can correct bowed panels and stiffen the wall.

Stagger joints on opposite sides of the wall when possible.

