

TSUBAKI GRIPPER CHAIN

For form, fill, and vacuum seal wrapping applications



**Lower maintenance costs
Increased uptime
Increased productivity**

A formidable new force has taken hold of wrapping operations.

Get a Grip on Truly Profitable Performance

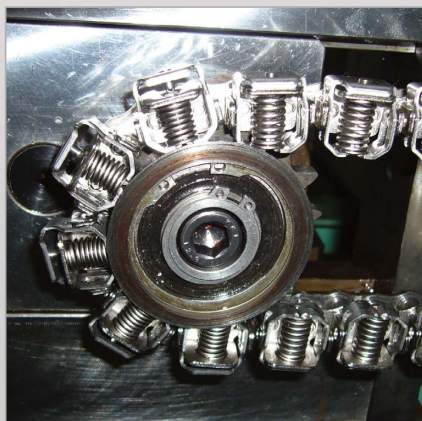
Discover the difference Tsubaki's high-quality base chain makes in your bottom line.

- Lower maintenance costs
- Increased uptime
- Increased productivity



All-Inclusive Sprocket Package

Precision-machined, specially surface coated sprockets with cam (assembled) for M Type gripper chain applications are available as design stock.



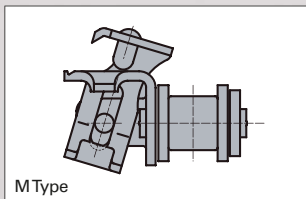
*Stainless steel chains are ideal on conveyors that are regularly washed down.



Our high-performance roller chain is now available with both conventional and innovative new side-swivel gripper attachments for form, fill, and vacuum seal applications.

M Type: Enhanced Operation

Tsubaki gripper attachments feature reliable clamping mechanisms to ensure precise positioning. High-performance springs are designed to last more than 10 million cycles, even at high speeds. Our M Type attachment's side-swivel design allows optimal material feed-through to ensure your lines run smoother.



High-quality S Type, L Type, and BU Type attachments, which open straight up and down, are also available.

Exclusive! Quickly Cut to Length (*S, L, and BU Types only)

Tsubaki is the only manufacturer to offer Gripper Chain with recessed riveted pins for easy chain length adjustment. Keep production rolling with less downtime.



Industry-leading Spring Design for Outstanding Grip Performance

Made possible by using the best combination of grip force, toughness, and accuracy.

Tsubaki Base Chain Options

Nickel Plated Chain

Nickel plating not only improves appearance but also gives the chain slight corrosion resistance. Therefore, it can be used in applications where there is exposure to water.

Nickel Plated Lambda Chain

Special oil-impregnated bushings deliver long life with no lubrication. The result is reduced labor maintenance, better operating environments, and greater productivity.

Stainless Steel Chain

All parts use Austenitic stainless steel for corrosion resistance. Ideal on conveyors that are regularly washed down.

Extended Service Life

Tsubaki original lubricant is applied at the factory following assembly to ensure uniform coverage and protection of each chain component.

The lower part of the clamps and the cams need to be regularly lubricated.

Quick, Uniform Start-up

Factory pre-loading minimizes initial chain elongation. Colored connecting links are easy to identify while in service and convenient to install with spring clips.



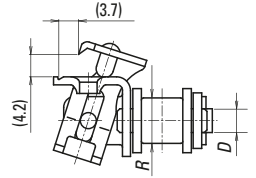
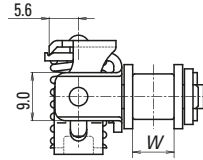
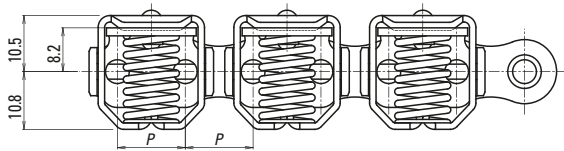
Applicable Industries

- Food: Ham, sausage, cheese, bread, etc.
- Electric: Electric wiring, light bulbs, etc.
- Medical: Syringes, medicine, etc.

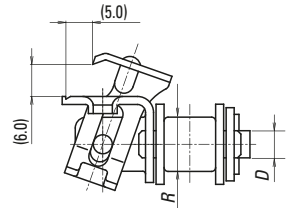
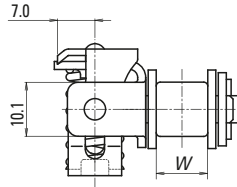
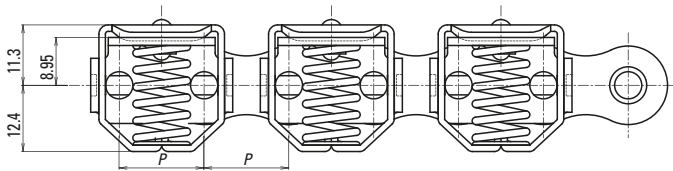


M Type GRIPPER CHAIN

RS08B-NP-KUM and RS08B-LM-NP-KUM

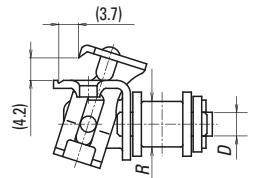
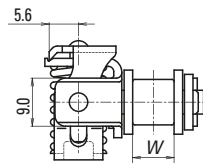
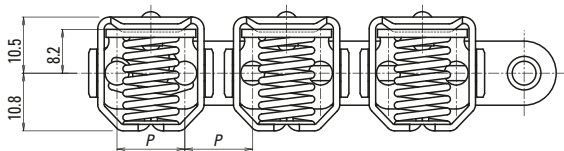


RS10B-NP-KUM and RS10B-LM-NP-KUM

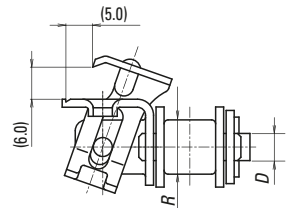
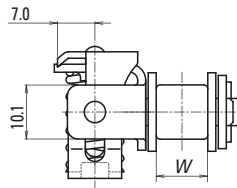
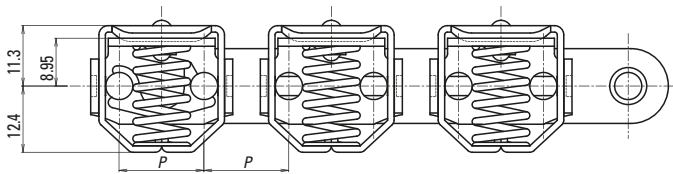


M Type-SS GRIPPER CHAIN

RS08B-SS-KUM



RS10B-SS-KUM



ISO Ref.	Tsubaki Chain Number	Connecting Link Number	Pitch		Roller Diameter		Inside Width		Clamp Type	Clamping Force	Materials		
			mm	Inches	mm	Inches	mm	Inches			N	Base Chain	Clamp
08B-1	RS08B-NP-KUM	RS08B-NP-KUM-CL	12.70	.500	8.51	.335	7.75	.305	M Type	50	NP	SS	SA
08B-1	RS08B-LM-NP-KUM	RS08B-LM-NP-KUM-CL	12.70	.500	8.51	.335	7.75	.305	M Type	50	NP Lambda	SS	SA
08B-1	RS08B-SS-KUM	RS08B-SS-KUM-CL	12.70	.500	8.51	.335	7.75	.305	M Type	50	SS	SS	SS
10B-1	RS10B-NP-KUM	RS10B-NP-KUM-CL	15.875	.625	10.16	.400	9.65	.380	M Type	55	NP	SS	SA
10B-1	RS10B-LM-NP-KUM	RS10B-LM-NP-KUM-CL	15.875	.625	10.16	.400	9.65	.380	M Type	55	NP Lambda	SS	SA
10B-1	RS10B-SS-KUM	RS10B-SS-KUM-CL	15.875	.625	10.16	.400	9.65	.380	M Type	55	SS	SS	SS

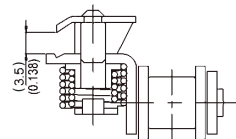
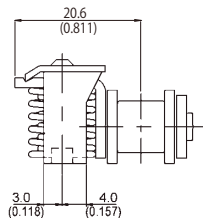
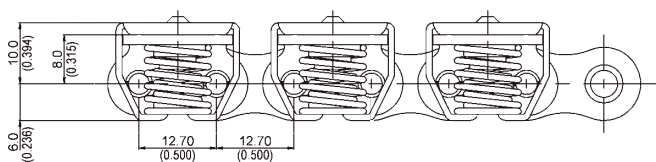
NP = Nickel Plated Steel SS = Stainless Steel SA = Special Alloy Note: Do not twist chain. Use care not to damage attachments when unwinding chain from reel.



S Type

GRIPPER CHAIN

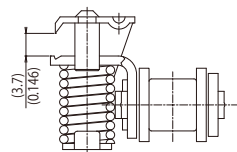
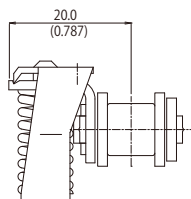
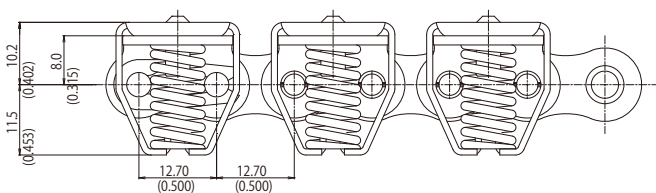
RS08B-NP-KUS and RS08B-LM-NP-KUS



L Type

GRIPPER CHAIN

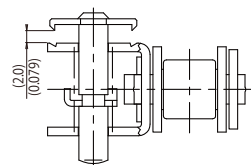
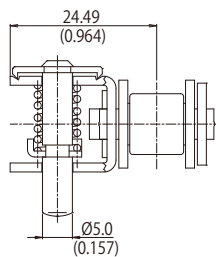
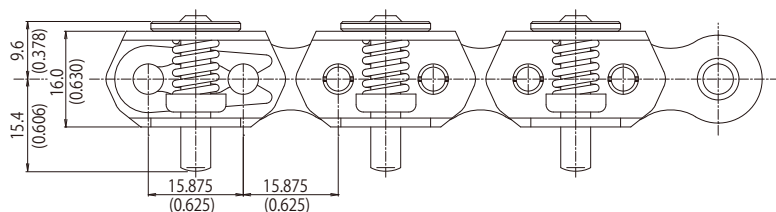
RS08B-NP-KUL and RS08B-LM-NP-KUL



BU Type

GRIPPER CHAIN

RS10B-NP-KU-BU and RS10B-LM-NP-KU-BU



ISO Ref.	Tsubaki Chain Number	Connecting Link Number	Pitch		Roller Diameter		Inside Width		Clamp Type	Clamping Force	Materials		
			mm	Inches	mm	Inches	mm	Inches			N	Base Chain	Clamp
08B-1	RS08B-NP-KUS	RS08B-NP-KUS-CL	12.70	.500	8.51	.335	7.75	.305	S Type	55	NP	SS	SA
08B-1	RS08B-LM-NP-KUS	RS08B-LM-NP-KUS-CL	12.70	.500	8.51	.335	7.75	.305	S Type	55	NP Lambda	SS	SA
08B-1	RS08B-NP-KUL	RS08B-NP-KUL-CL	12.70	.500	8.51	.335	7.75	.305	L Type	80	NP	SS	SA
08B-1	RS08B-LM-NP-KUL	RS08B-LM-NP-KUL-CL	12.70	.500	8.51	.335	7.75	.305	L Type	80	NP Lambda	SS	SA
10B-1	RS10B-NP-KU-BU	RS10B-NP-KU-BU-CL	15.875	.625	10.16	.400	9.65	.380	BU Type	60	NP	—	SS
10B-1	RS10B-LM-NP-KU-BU	RS10B-LM-NP-KU-BU-CL	15.875	.625	10.16	.400	9.65	.380	BU Type	60	NP Lambda	—	SS

NP = Nickel Plated Steel SS = Stainless Steel SA = Special Alloy Note: Do not twist chain. Use care not to damage attachments when unwinding chain from reel.



TSUBAKIMOTO CHAIN CO.

Japan	Headquarters	+81 6-6441-0011	http://tsubakimoto.com
-------	--------------	-----------------	---

Global Group Companies

AMERICAS

United States of America	U.S. TSUBAKI POWER TRANSMISSION, LLC	+1 847-459-9500	http://www.ustsubaki.com/
Brazil	TSUBAKI BRASIL EQUIPAMENTOS INDUSTRIAIS LTDA.	+55 11-3253-5656	http://tsubaki.ind.br/
Canada	TSUBAKI of CANADA LIMITED	+1 905-676-0400	http://tsubaki.ca/

EUROPE

Netherlands	TSUBAKI EUROPE B.V.	+31 78-6204000	http://tsubaki.eu/
France	KABELSCHLEPP FRANCE S.A.R.L.	+33 1-34846365	http://kabelschlepp.fr/
Germany	TSUBAKI DEUTSCHLAND GmbH	+49 8105-7307100	http://tsubaki.de/
	TSUBAKI KABELSCHLEPP GmbH	+49 2762-4003-0	http://kabelschlepp.de/
Italy	KABELSCHLEPP ITALIA S.R.L.	+39 0331-350962	http://kabelschlepp.it/
Russia	OOO TSUBAKI KABELSCHLEPP	+7 499-4180212	http://kabelschlepp.ru/
United Kingdom	TSUBAKIMOTO U.K. LTD.	+44 1623-688-700	http://tsubaki.eu/

INDIAN OCEAN RIM

Singapore	TSUBAKIMOTO SINGAPORE PTE. LTD.	+65 6861-0422/3/4	http://tsubaki.sg/
Australia	TSUBAKI AUSTRALIA PTY. LTD.	+61 2-9704-2500	http://tsubaki.com.au/
India	TSUBAKI INDIA POWER TRANSMISSION PTE. LTD.	+91 44-4231-5251	http://tsubaki.sg/
Indonesia	PT. TSUBAKI INDONESIA TRADING	+62 21-571-4230/1	http://tsubakimoto.co.id/
Malaysia	TSUBAKI POWER TRANSMISSION (MALAYSIA) SDN. BHD.	+60 3-7859-8585	http://tsubaki.sg/
New Zealand	TSUBAKI AUSTRALIA PTY LIMITED - NEW ZEALAND BRANCH	+64 275-082-726	http://tsubaki.com.au/
Philippines	TSUBAKIMOTO SINGAPORE PTE. LTD. - PHILIPPINES REPRESENTATIVE OFFICE	+63 2-464-7129	http://tsubaki.ph/
Thailand	TSUBAKIMOTO (THAILAND) CO., LTD.	+66 2-262-0667	http://tsubaki.co.th/
Vietnam	TSUBAKIMOTO SINGAPORE PTE. LTD. - VIETNAM REPRESENTATIVE OFFICE	+84 8-3999-0131/2	http://tsubaki.net.vn/

EAST ASIA

Korea	TSUBAKIMOTO KOREA CO., LTD.	+82 2-2183-0311	http://tsubakimoto-tck.co.kr/
Taiwan	TAIWAN TSUBAKIMOTO CO.	+886 33-293827/8/9	http://tsubakimoto.com.tw/

CHINA

China	TSUBAKIMOTO CHAIN (SHANGHAI) CO., LTD.	+86 215396-6651/2	http://tsubaki.cn/
-------	--	-------------------	---