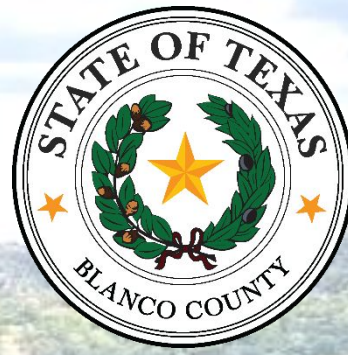




**STAR *Flight***

**Blanco County Base**

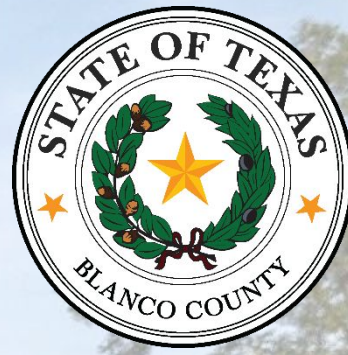




# Current Problem

- Currently in Texas, 72% of counties have a hospital in their County.
- Blanco County is one of 71 counties in Texas with no hospital.
- LBJ Memorial Hospital, the hospital of Blanco County, closed its doors 38 years ago, as critical patients were best served by “larger, better-equipped hospitals in Austin”
- Critically ill/injured patients are far away from the closest Level I Trauma Center, excluding EMS Response & Scene Time
  - Center of County to DSMC@UT = 44.6 miles / 52 minutes
  - Furthest Points to DSMC@UT = 70 miles / 85 minutes
- Rural patients are disadvantaged due to distance from comprehensive facilities





# Mitigation

- High Performance Emergency Medical Services (EMS) System
  - Started in Blanco County 50 Years Ago
  - Now provided by Blanco County ESD 1 and ESD 2
  - Full-time Mobile Intensive Care Unit (MICU) Coverage
  - Enhanced scope of practice
  - Prevention efforts
- Need for rapid transport of critically ill and injured patients with time sensitive conditions to comprehensive receiving facilities





# Helicopter Emergency Medical Services (HEMS)

- Efficient method to rapidly move critical patients to comprehensive facilities, which has been in use since WWII, significantly reduced morbidity and mortality.
- Helicopters staffed with a Pilot, Flight Nurse and Flight Paramedic transport patients in the aircraft to the hospital.
- Locally, this results in a significant reduction in transport time to Level I Trauma Center:

Location	Avg Ground Transport	Avg Air Transport
Center of County	52 Minutes	13 Minutes
Furthest Points	85 Minutes	18 Minutes

**Average Reduction of Transport Time = ~75%**



***A natural partnership to best serve our community...***



**Blanco County ESD 1**  
North Blanco County EMS



**Travis County *STAR* Flight**  
Blanco County HEMS Provider



**Blanco County ESD 2**  
Blanco County Fire/EMS



# Disadvantages – Current Model

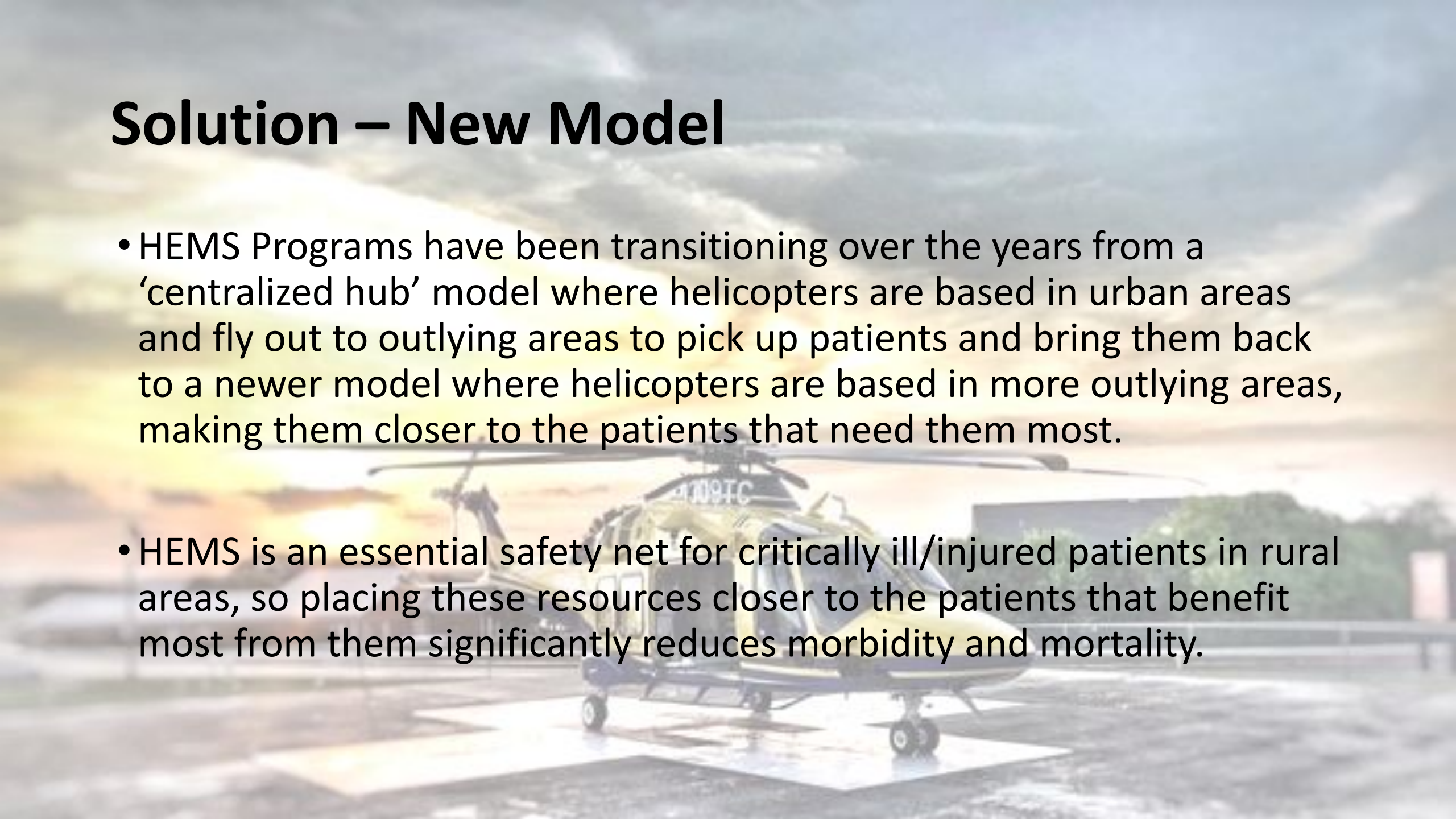


- Benefits of HEMS Transport constrained by HEMS Response Times
- HEMS Total Response & Transport Time =  
Activation Time + Flight Time to Scene + Scene Time + Transport Time
- Currently:
  - Average Activation/Flight Time to Scene for Center of County = 26 min
- Local EMS Providers must carefully evaluate each incident for the benefit of HEMS transport
- Critically ill/injured patients currently experience prolonged transport times by ground when HEMS Response Times negate benefit
- Prolonged transport times = Worse outcomes for critically ill/injured patients



# Solution – New Model

- HEMS Programs have been transitioning over the years from a 'centralized hub' model where helicopters are based in urban areas and fly out to outlying areas to pick up patients and bring them back to a newer model where helicopters are based in more outlying areas, making them closer to the patients that need them most.
- HEMS is an essential safety net for critically ill/injured patients in rural areas, so placing these resources closer to the patients that benefit most from them significantly reduces morbidity and mortality.



# The Solution





# Proposed Project



- Construction of a Station/Base in Northern Blanco County which would serve as a Helicopter Fixed Base of Operations as well as an EMS Station
- The facility would be constructed to house the following:
  - Travis County **STAR** Flight Aircraft and Personnel
  - Blanco County ESD 1 EMS Apparatus and Personnel

BLANCO COUNTY





# Travis County **STAR** Flight: Profile

- Multi-Mission Public Safety Helicopter Program serving Travis County and the 17 Surrounding Counties of Central Texas
  - Helicopter Air Ambulance
    - 911 Scene Response
    - Critical Care Interfacility transport
  - Search and Rescue/Hoist Operations
  - Airborne Fire Recon and Suppression
  - Law Enforcement Support
  - Specialty Team Transport
- Third oldest flight program in the state of Texas.
- Started in 1985, 37 years of service to the community
- Only CAMTS accredited Public Safety flight program in the United States







# Site Selection

- Round Mountain mutually selected as ideal site for program
- Benefits of Site:
  - Sufficient publicly owned land available (Currently owned by ESD1)
  - Close proximity to Western Travis County
  - Close proximity to common rescue locations
    - Lake Travis
    - Pedernales Falls
    - Enchanted Rock
- Due to aircraft cruise speeds, actual base location within County not significant
- All of Blanco County has an average flight time of 10 minutes or less





# Project Scope

- The proposed project would include the following:
  - Helipad in compliance with FAA Regulations to safely land Leonardo AW169 in Single-Pilot Instrument Flight Rules (SPIFR) conditions
  - Aviation Fuel Tank with 10,000 Gallon Capacity of Jet A Fuel
  - Hangar capable of storing (1) Leonardo AW169 Aircraft and (1) Ambulance
- Station capable of housing (6) Personnel:
  - (3) HEMS Personnel - Dedicated
  - (2) EMS Personnel - Dedicated
  - (1) HEMS or EMS Person





# Project Scope

- Station capable of housing (6) personnel
  - Operations Office for Aviation and Ground Operations
  - Crew Quarters (Bedrooms)
  - Day Room
  - Bathrooms/Showers (2)
  - Kitchen
  - Medical Supply Rooms for Aviation and Ground Operations
  - Tool Room
  - Decontamination Room
- Estimated Size of Facility = 8,900 ft<sup>2</sup>
  - Hangar / Apparatus Area = 4,400 ft<sup>2</sup>
  - Conditions Space = 4,500 ft<sup>2</sup>

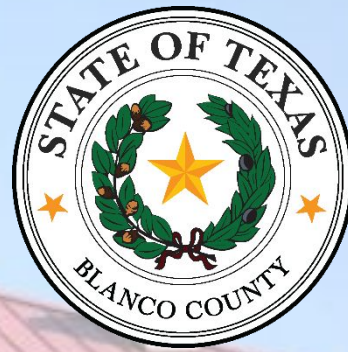


# Facility Staffing Plan

- Initial staffing plan concepts, subject to approval of respective management authorities:
  - Travis County **STAR** Flight
    - 12-Hour Daytime Aircraft (1 Pilot, 1 Flight Nurse, 1 Flight Paramedic)
    - Occasional overnight shifts
    - Expanded coverage based on needs identified and resource/budget availability
  - Blanco County ESD 1
    - 24-Hour Coverage with Single Paramedic Response Unit (“Squad”)
    - Provides ALS First Response to Local Area (Round Mountain)
    - Ensures ALS availability to all of Blanco County when EMS is at ‘Level 0’
    - Provides supplemental ALS coverage (countywide) for high priority incidents
    - Transition to 24-Hour MICU based on needs identified and resource/budget availability



# Benefits: Blanco County

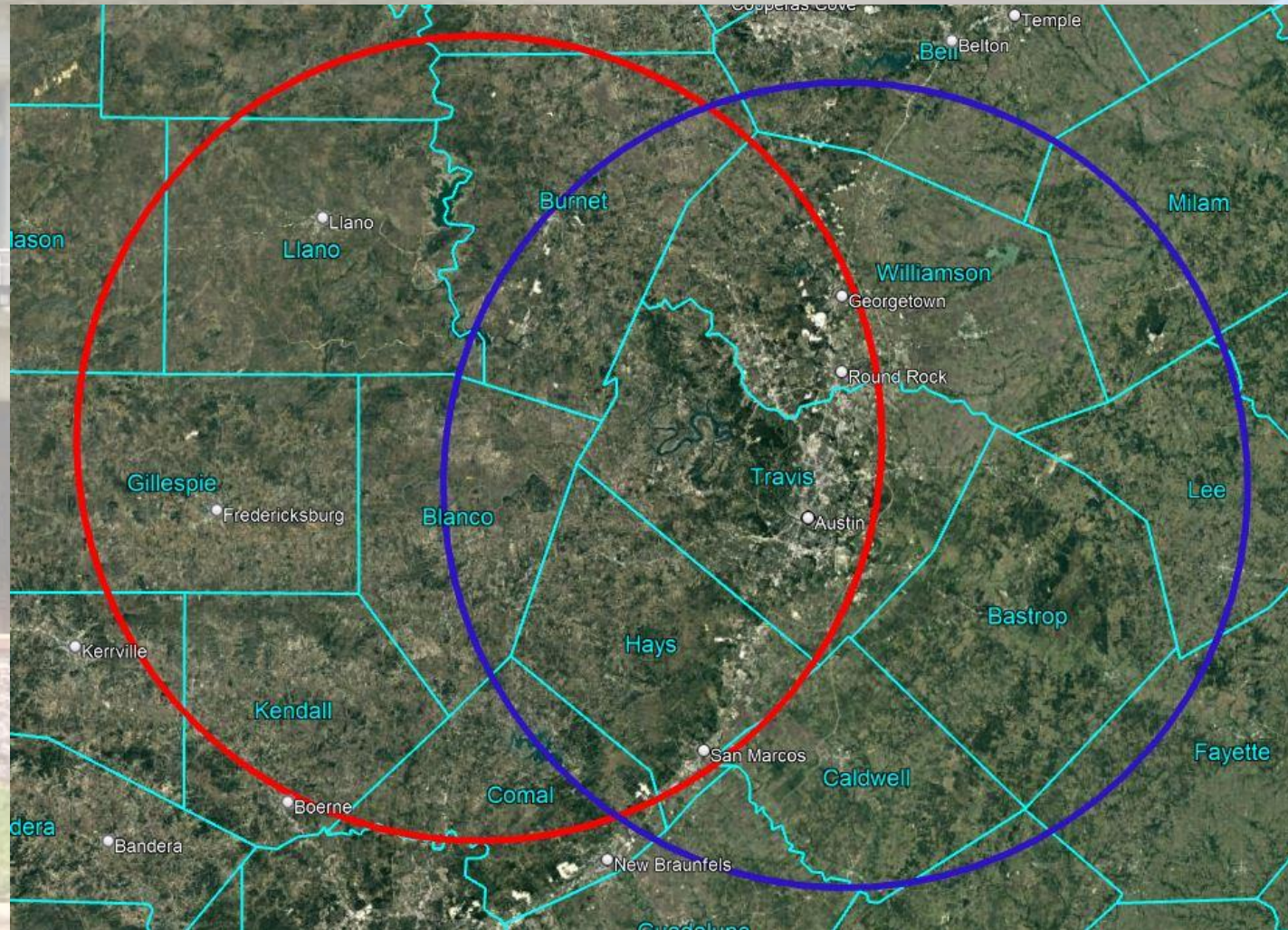


**Blue Circle-** 15 min flight time coverage from **STAR Flight** hangar (Current model)

**Red Circle-** 15 min flight time coverage from proposed Blanco County hangar

Location	STAR Flight Hangar	Blanco County Hangar
Blanco	15 minutes	6 minutes
Johnson City	14 minutes	4 minutes
Round Mountain	13 minutes	0 minutes
Pedernales Falls	11.5 minutes	2 minutes

**79% Average Reduction in Flight Times**





# Benefits: Travis County

- The creation of a western base of operations provides STAR Flight with faster, closer access to areas that generate significant utilization of the program.
  - The ability to position a helicopter in this major service area shortens the flight-time required to reach patients.
  - In addition, this western service area is typically busy during fire season. Having an airborne fire-fighting resource closer to these areas of need makes good sense
- Moving a STAR Flight aircraft West provides decreased response time to our most frequent out of county response areas, while providing better or equal coverage to Travis County residents.
  - Currently both STAR Flight aircraft are placed within 3 nautical miles from each other. Placing one aircraft further West significantly expands the reach of the STAR Flight program.
- Blanco County has long been a valued customer of the STAR Flight program, keeping STAR Flight at the top of its emergency-call list for all air-ambulance needs.



# Benefits: Texas Hill Country

- Travis County STAR Flight serves more than just Travis and Blanco counties
- STAR Flight serves Travis County and the surrounding 17 counties of Central Texas
- Project brings this critical asset closer to several of our neighbors, bringing the same benefits to them:
  - Burnet County
  - Llano County
  - San Saba County
  - Lampasas County
  - Gillespie County
  - Hays County
  - Comal County





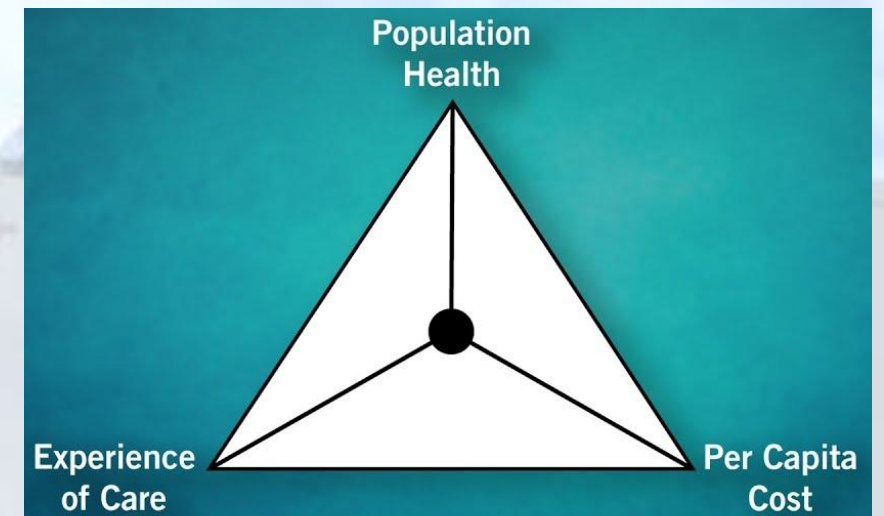
# Interlocal Agreement Contingencies

- This interlocal agreement has two important requirements which the ILA is contingent upon:
  - Blanco County obtaining adequate financing on acceptable terms and conditions for the Project no later than December 31, 2022
  - Blanco County obtaining title in fee simple to the Property no later than December 31, 2022
- If both of these requirements are not met by the deadline, the ILA will be terminated as of January 1, 2023



# Summary: IHI Triple Aim

- The IHI Triple Aim is a framework developed by the Institute for Healthcare Improvement that describes an approach to optimizing health system performance. New designs must be developed to simultaneously pursue three dimensions, which is called the “Triple Aim”:
  - Improving the patient experience of care (including quality and satisfaction);
  - Improving the health of populations; and
  - Reducing the per capita cost of health care.





# Summary: IHI Triple Aim

- Population Health
  - Reduces morbidity/mortality
  - Reduces disparity – rural patients can access comprehensive healthcare in the same amount of time as an urban patient could
- Experience of Care
  - Reduced transport times greatly improves patient satisfaction
  - Provides added comfort to consumers
- Per Capita Cost
  - Partnership is a cost-effective solution compared to other solutions
  - Provides access to a governmental/public air medical provider, which delivers service at a fraction of the cost of the private air medical industry, with much more advantageous billing methodologies, reducing consumer cost



# Questions?

