

# Jewelry of NM Artisan Tour

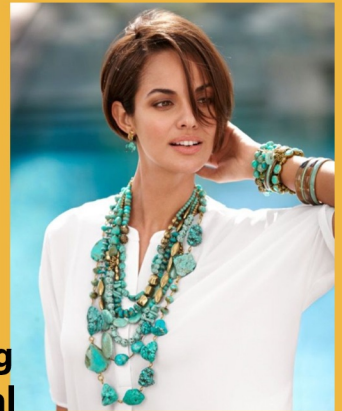
## Concierge New Mexico 2023 Tour Schedule



# The Magic begins with Turquoise!

Have you ever wondered what it takes to get behind the scenes.

Inspiring both artists and mystics from Albuquerque to Santa fe, the turquoise trail covers a scenic 65 mile stretch along NM 14 through a world of mining and jewelry-making artisans that has changed little since Puebloan Miners chiseled turquoise from shallow digs.



Exclusive to NM Black Car for our Premier Clients is a customizable and behind the scenes purchasing opportunity for a select individual or group that wants to go directly to the source for a private jewelry shopping opportunity at wholesale direct to you shopping experience!

The Turquoise Trail is historic and synonymous with Native American spirituality, Spanish explorers, adventurous mining and brave pioneers and as intergal to history as the new settlers crossed across the American landscape headed west in search for

gold. We will take you through the historic highway and the little mining towns as we head to a "By invitation only" buyers showroom where you will be able to shop and purchase Southwestern Jewelry directly from one of New Mexico's leading Artisan craft showrooms direct!

Every year thousands of visitors come to Santa Fe from around the world to relax and take in the art and culture of the Southwest! But, we know that it's not always about art, food and hidden valleys of aspen trees!! Jewelry is a huge part of that and we have a one of a kind opportunity to make that happen for you!

