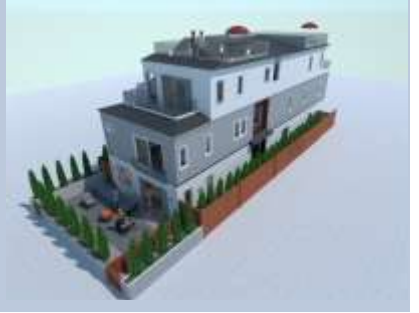


# Two Beautiful Condos in Mission Beach

- 805 Ormond Ct., 3 Bedrooms, 2.5 Bath, 1500 SqFt, Roof Deck, 2 car Tandem garage
- 807 Ormond Ct., 3 Bedrooms, 2.5 Bath, 1300 SqFt, Roof Deck, private Front Yard, 2 car Tandem garage
- Walk 1 minute west to Ocean, surfing, beach, and swimming. Walk 1 minute east to bay, picnic, relax, sail, windsurfing.



Two beautiful condos steps to mission bay and Pacific Ocean. Architected by well-known Golba Architecture, engineered by Patterson Engineering, and Built by Zimbolo team with more than 30 years' experience. Enjoy view of the Bay and ocean from the roof decks and some rooms.

Walk to bay, beach, neighborhood eateries, and coffee shops. Sitting in center of Mission Beach, a popular spot in San Diego for surfing, shopping, dining and other outdoor activities, including iconic Belmont Park. Live between the beach and the bay at this incredible neighborhood which allows a one-of-a-kind lifestyle to swim, surf, fish, boat, or just bask in the year-round San Diego sun.

## Features

<b>View</b>	<ul style="list-style-type: none"> <li>• Roof Deck with Glass handrails and fire pit</li> <li>• Bay view and Ocean view from roof deck and some rooms</li> </ul>
<b>Efficiency</b>	<ul style="list-style-type: none"> <li>• Tankless water heater</li> <li>• Energy-saving LED light bulbs</li> <li>• Efficient, In-wall, Ductless AC units and individual control in each room</li> <li>• Energy-efficient gas heating system</li> <li>• Low-energy dual-pane vinyl windows</li> </ul>
<b>Connectivity</b>	<ul style="list-style-type: none"> <li>• Great Room surround sound with Built-in Speakers</li> <li>• App controlled garage door openers</li> <li>• App controlled Security camera for side yards</li> <li>• Smart lock, with remote control</li> <li>• Ring® Video Doorbell</li> <li>• Cable &amp; Data outlets in all rooms</li> <li>• Fan/light prewire at all bedrooms</li> </ul>
<b>Kitchen</b>	<ul style="list-style-type: none"> <li>• Large Island with quartz countertop and seating area</li> <li>• ENERGY STAR® stainless steel side-by-side refrigerator</li> <li>• 5 burner cooktop</li> <li>• Stainless steel microwave</li> </ul>

# Two Beautiful Condos in Mission Beach

	<ul style="list-style-type: none"><li>• Stainless steel Dishwasher</li><li>• Hi arc pulldown faucet</li><li>• Contemporary single basin under-mount stainless steel sink</li><li>• Designer-selected cabinetry in white Shaker-style</li><li>• Hanging pendant at island</li><li>• Convenient roll-out shelf for recycling, trash</li></ul>
<b>Bedrooms</b>	<ul style="list-style-type: none"><li>• Walking closets some rooms, mirrored closets other rooms</li><li>• Cable and Internet wiring in all rooms</li><li>• Full of lights, ocean and bay view in some rooms</li></ul>
<b>Bathrooms</b>	<ul style="list-style-type: none"><li>• Under-mount sinks</li><li>• Designer Kohler® faucets</li><li>• Custom Shower with glass doors</li><li>• Custom Quartz Countertops</li><li>• Designer-selected Shaker-style cabinetry packages in white</li><li>• Designer selected framed mirror(s)</li></ul>
<b>Laundry Room</b>	<ul style="list-style-type: none"><li>• Custom Cabinets with ENERGY STAR® side-by-side washer and dryer in white</li></ul>
<b>Interior</b>	<ul style="list-style-type: none"><li>• Therma-Tru® Smooth-Star® paint-grade 8' entry door</li><li>• High quality Laminate &amp; Tile Flooring</li><li>• Shaker Style Interior doors</li><li>• Beautiful Glass Handrails</li><li>• Contemporary Kwikset® handles &amp; locks</li><li>• Fire sprinklers throughout</li></ul>
<b>Exterior</b>	<ul style="list-style-type: none"><li>• Arcylic Stucco, 2 tone, cracks less than standard stucco</li><li>• Built-In barbecue</li><li>• Fire pit</li><li>• Roof deck with bay and ocean View</li><li>• Front yard with beautiful deck, 807 Ormond Ct.</li><li>• Personal Outdoor shower with Hot &amp; Cold water</li><li>• Insulated garage doors with quiet belt drive openers</li><li>• Fire-rated garage entry door</li><li>• Deadbolt locks on garage entry doors</li><li>• Harmonizing color schemes</li><li>• Fire-resistant roof tiles</li><li>• Exterior waterproof electrical outlets</li></ul>
<b>Sqft Area-805 Ormond:</b>	<ul style="list-style-type: none"><li>• Inside Floor: 1514, Deck &amp; Balcony: 581, Garage: 341</li><li>• TOTAL for everything: <math>1514+581+341=2436</math></li></ul>
<b>Sqft Area-807 Ormond:</b>	<ul style="list-style-type: none"><li>• Inside Floor: 1287, Deck &amp; Balcony: 388, Garage: 341, Front Yard: 375</li><li>• TOTAL for everything: <math>1287+388+341+375= 2391</math></li></ul>