



Lakeside

891 E Lake Samish Dr. Bellingham, WA

4 bedrooms, 4 bathrooms, on the sunny side of Lake Samish
2,434* square feet (+ 550* square foot Guest House)

*Tax Records

LakesideLakeSamish.com

Architecturally designed with superior craftsmanship
throughout this exceptional home in a spectacular setting.

Designed by AIA Architect Jeff McClure, built by Emerald Builders

Waterfront Living

- *LAKESIDE* is set on one of two waterfront lots, each with its own water right.
- Strategically placed to face south, to ensure maximum sun exposure.
- Pristine, warm Lake Samish waters (no effluent), with less wave-action.
- Waterside upper trex deck runs the length of the main level of the home, with doorways leading from the kitchen and primary bedroom.
- Abundant windows brighten living space & beckons you to views of Lake Samish, the woods, gardens and wildlife; numerous opening windows brings in birdsong + "lapping lakeside" sound.
- Commercial-design floating dock manufactured by Bellingham Marine.
- Boat lift.
- New hot tub, to soak in the sunset.
- Glamping tent with electricity: the ultimate lakeside spot to take in the sights & sounds of Lake Samish, while you drift to sleep.
- Outdoor shower with warm water, draped in Wisteria - no need to head indoors to rinse off.
- Outdoor fire pit - S'mores Central!
- Lush landscaping designed by Bearcreek Nursery.

Finishes

- Custom clear vertical grain fir and maple woodwork throughout the home & guest house.
- Wood flooring throughout + wall-to-wall carpeting in most bedrooms + concrete laundry floor + ceramic tile.
- Custom fir storage built-ins throughout the home + guest house.
- Metal roofs.

KATIE MUNDELL

KatieM@kw.com

360.303.4352

KatieMundell.com

kw WESTERN
KELLER WILLIAMS REALTY

Independently Owned & Operated



Floor Plan

- Lake Samish views greet you at the main/guest entrance to *LAKESIDE*, and throughout the main level.
- Primary bedroom with ensuite bathroom & home office (or reading area? craft room? nursery?), den, living room, dining room, kitchen, laundry and guest bathroom all on the main level.
- Upper level includes three bedrooms and a full bathroom.
- Intimate family areas and generous entertainment spaces.
- Primary bedroom includes large walk-in closet with built-in cabinetry, walk-in shower, freestanding bathtub, and deluxe toilet with smart technology.
- Basement is a great storage space for water toys, gardening supplies + 2nd freezer.
- Basement also houses a 500+ bottle wine cellar.
- Guest House accommodates extended-stay house guests.

Kitchen + Butler's Kitchen

- Cook's open kitchen with custom solid maple cabinetry, Pental stone slab countertops + Ann Saks tile backsplash.
- Gourmet appliances: Sub-Zero Refer, Miele Dishwasher, Built-in GE Oven + Microwave.
- Casual eating area with countertop-height stools - a great place for guests to socialize with the chef.
- Large pantry closet and generous kitchen storage.

Butler's Kitchen/Laundry Room

- Butler's kitchen is tucked behind the primary kitchen: functional workspace that elevates entertaining, with versatility. Beverage center, sink + counter space adds convenient and discreet workspace, or a designated wet bar.
- Laundry Room situated away from bedrooms.
- Newer front-loading washer & dryer.
- Plenty of counter space for folding and stacking clothes.
- Laundry sink, for dealing with messy projects.

Home Gym

- Tucked discreetly outside *LAKESIDE*'s main entrance.



Guest House

- Nestled in the landscape, *LAKE SIDE*'s 550sf Guest House accommodates extended-stay house guests.
- Designed as a retreat, with its own 3/4 bathroom with stone finishes, separate bedroom, kitchenette with eating space and living room.

Pump + Storage House

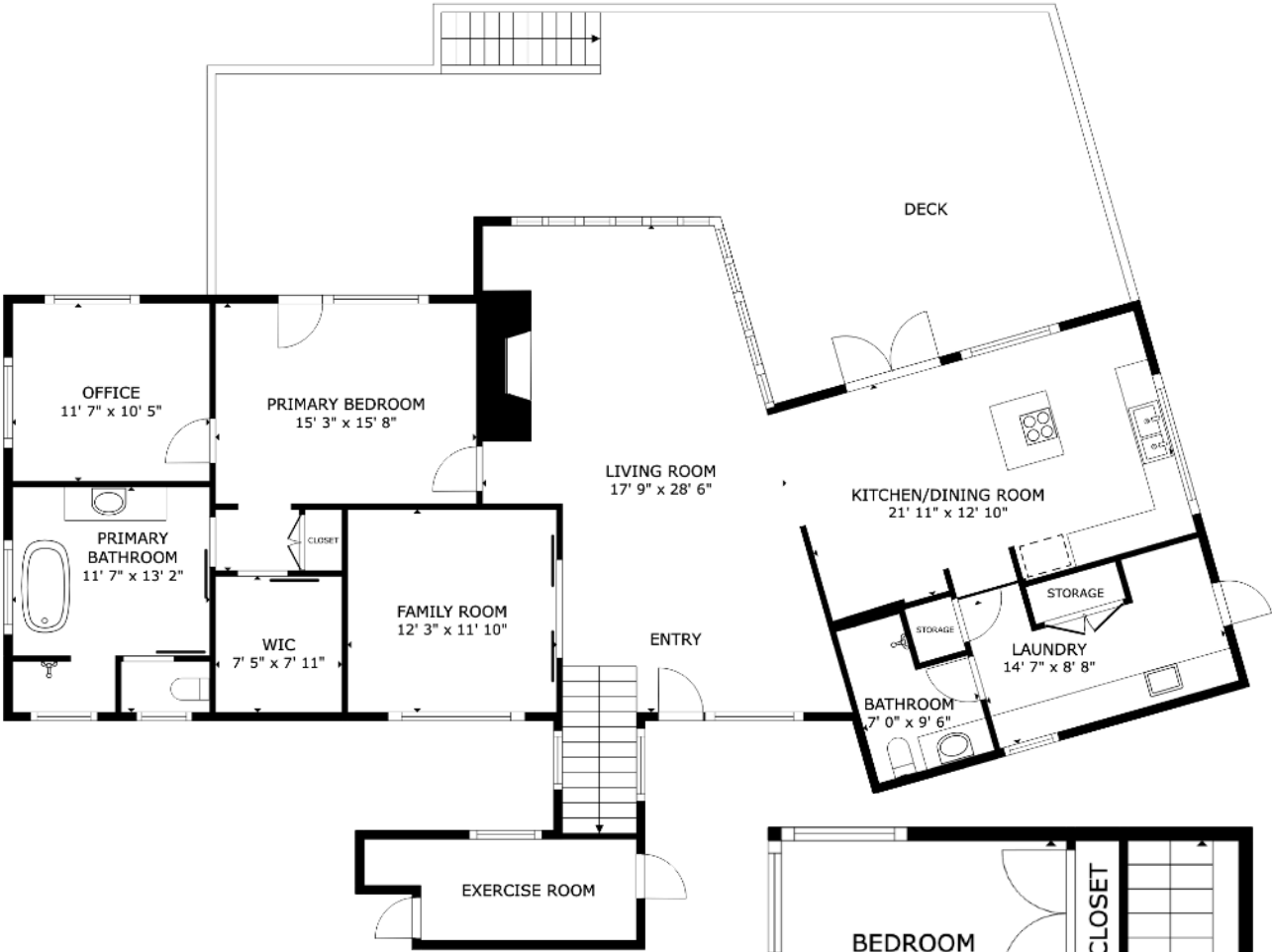
- Pump house provides constant, clean supply of water, sourced by Lake Samish.
- Serviced annually.
- Generous storage for less-used household items.

Systems

- Primary Suite + Den: propane forced-air and instant hot-water
- Remainder of the Home: In-floor radiant heat, powered by propane water boiler
- Guest house has ductless HP mini split with A/C
- Two propane water heaters: 1 for house, 1 for guest house
- Generator auto-on if detects a power outage, powering heating + lights + water-pump
- Wood-burning fireplace with integrated propane log-lighter
- Electric dryer, propane stove, electric oven
- Water pumped from Lake Samish, cleaning system in Pump House
- Samish Sewer District, Puget Sound Energy, Comcast XFINITY for cable + internet



FLOORPLANS



LEVEL 1 + LEVEL 2

GUEST HOUSE

