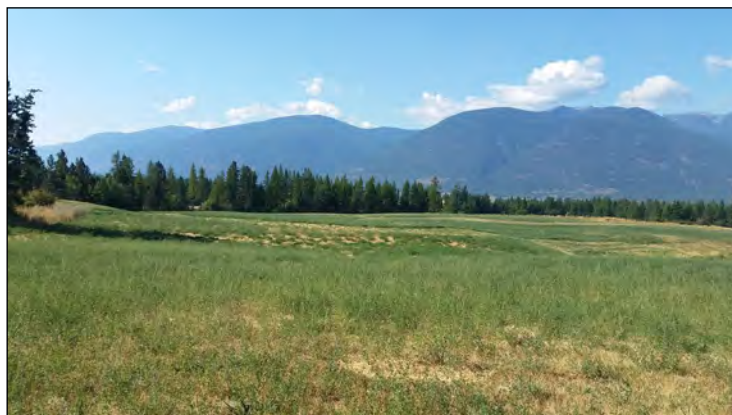
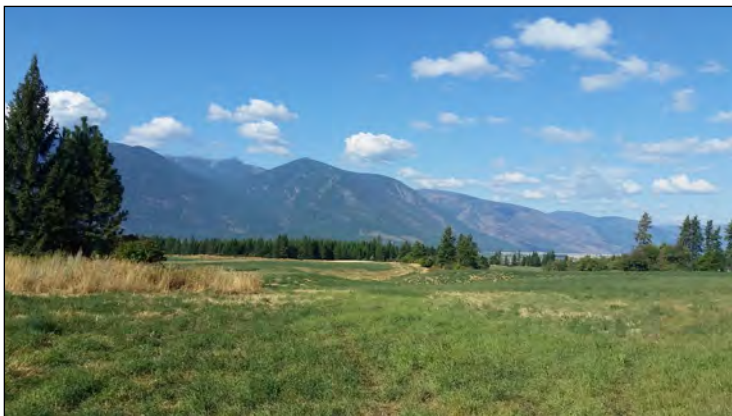




Dinning Real Estate 6422 Kootenai Street PO BOX 653 Bonners Ferry, ID 83805 Phone: (208) 267-7953 www.dinningrealestate.com



## PYWELL ROAD

Beautiful land in a great location north of Bonners Ferry. Approx. 90 acres (60 in cropland, balance in marketable timber). Plenty to build your own log home. Great access directly off Hwy 1 and Pywell Road (a dead end county maintained road). You can grow a wide variety of crops, alfalfa, grains, fruit trees, nut trees and berries. There is an old orchard of apple and pear trees. Mission Creek Water System hookup is available for \$3,500.00 (connection on site). Wells common in the area. A spring breaks out on the property which could be gravity flow irrigation. Plenty of room for livestock. Mt. Hall Grade School close by. Rural location and peaceful. Places like this do not come along very often.

### \$728,000

**Directions:** North from Bonners Ferry 14 miles to junction of Hwy 95 and State Hwy 1. Left on to Hwy 1. Then 3/4 mile to Pywell Road and property on left.



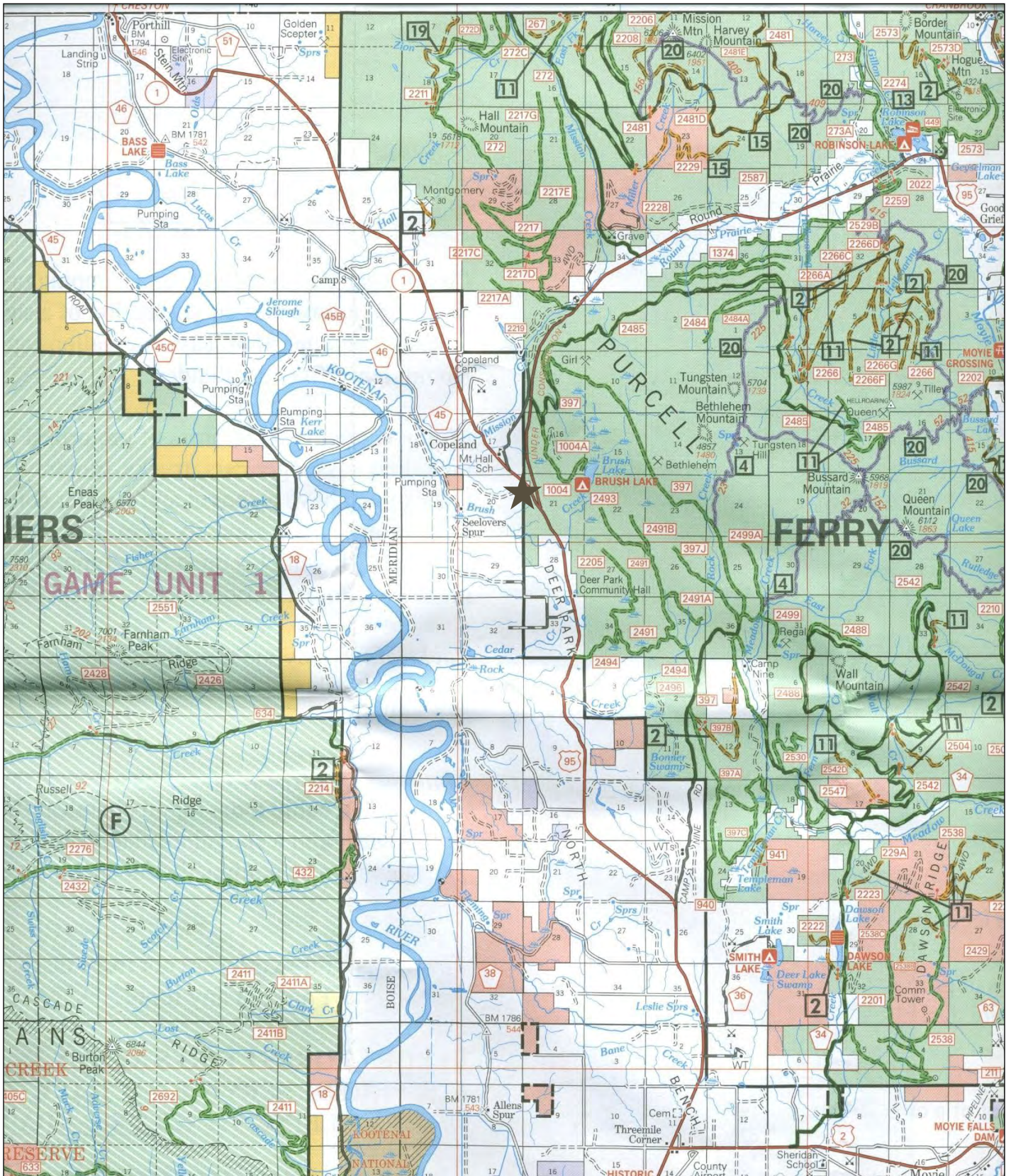




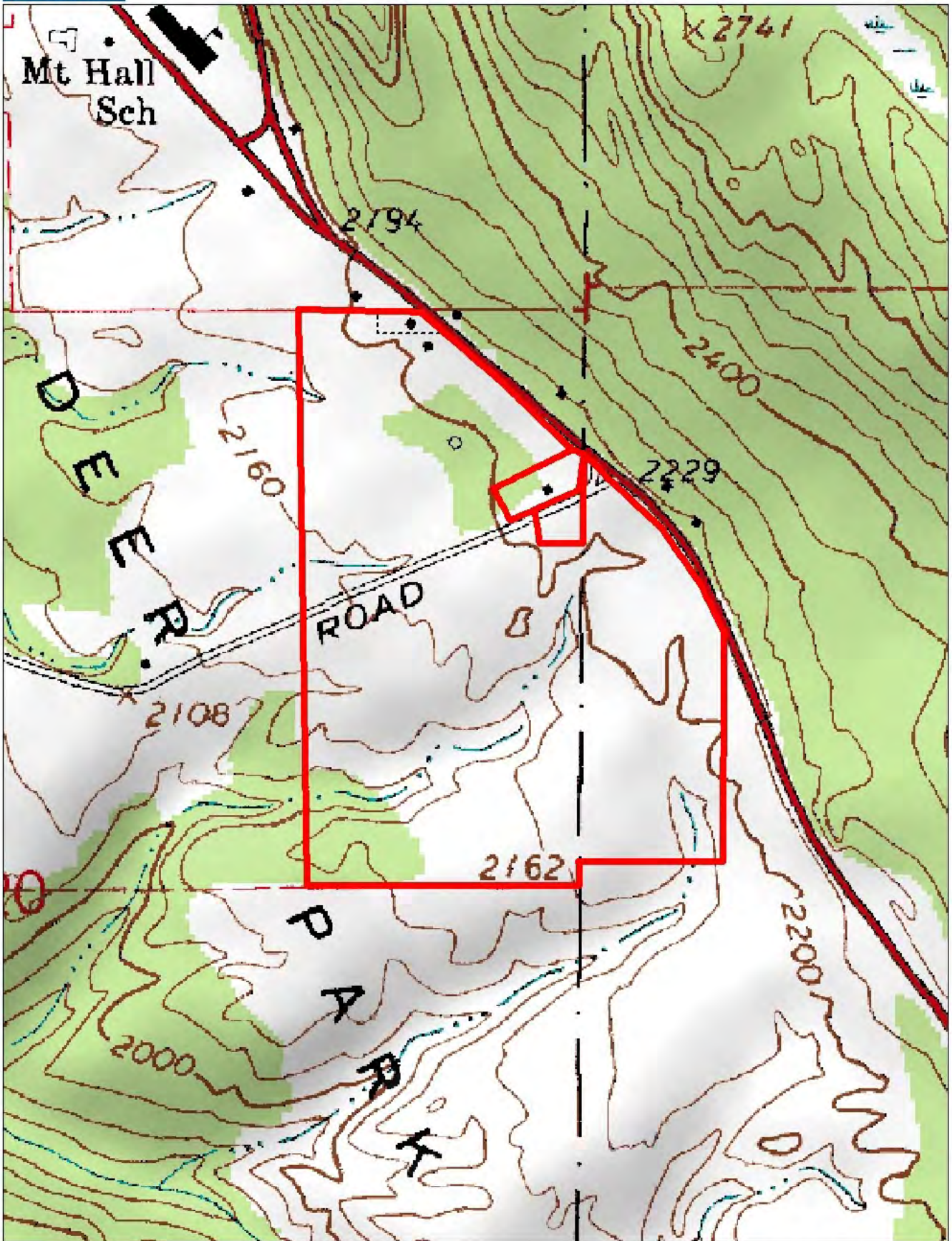


# Directions:

North from Bonners Ferry 14 miles to junction of Hwy 95 and State Hwy 1. Left on to Hwy 1. Then 3/4 mile to Pywell Road and property on left.



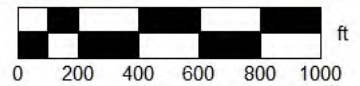




Data use subject to license.

© DeLorme. XMap® 6.

www.delorme.com



Data Zoom 14-7