

# DINNING REAL ESTATE

....OWN your dream



**DINNING REAL ESTATE** has a unique inventory of recreational, remote and rural property for sale to accommodate a variety of interests. Check out our properties to see if we have the perfect one for you.

If you find something that piques your interest, we have more information to send you. We are always happy to visit and answer any questions you might have.

If you do not find what you are looking for, tell us what your dream property looks like. We will let you know if any come available that might suit. We want to make buying real estate a pleasurable experience for you.

## SAVAGE LAKE, TROY, MT



**NEWLY REMODELED LAKE FRONT HOME!**

1,744 Sq. ft 3 bedroom, 2 bathroom house on Savage Lake. It is gated and at the end of the paved road.

Brand new well, septic, and roof. Private dock and a large deck. **\$750,000.00**



# ENCHANTED VALLEY



**Enchanted Lane #3**

10 Acres affords unparalleled views of the Purcell Mountains! Plenty of level ground to build a home, gardens or orchards. **\$250,000.00**

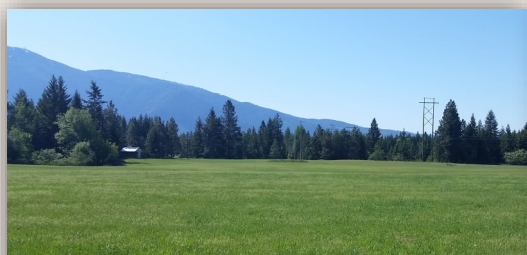


**Enchanted Lane #5**

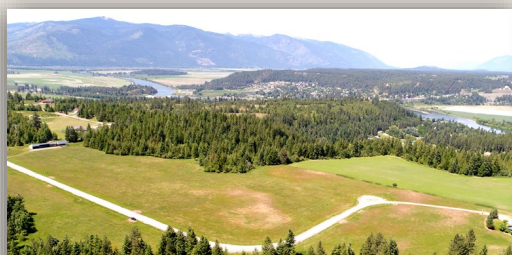
Timbered 40 Acres Parcel to build your dream on. Underground power nearby & wells on neighboring property. Private at the End of the road. **\$1,200,000**

## PARADISE VALLEY—STELLAR JAY ROAD

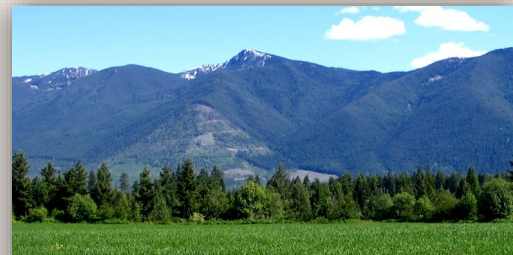
Three Lots Ready to Build on. Each includes Underground City of Bonners Ferry Power, Natural Gas, Telephone and Membership/Hook up to Cabinet Mountain Water.



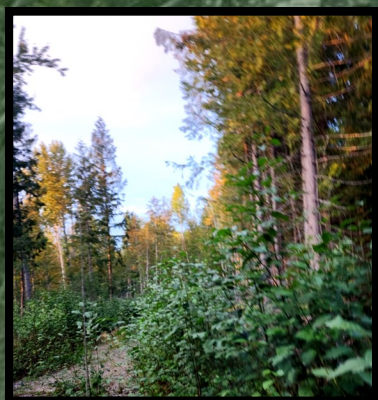
**350 Stellar Jay-6.22 Ac**  
5 minutes from Town



**485 Stellar Jay 5.59 Ac**  
Highest point in the neighborhood



**600 Stellar Jay 8+ Ac**  
Mostly timbered with Stellar views



**Cross Mountain Road 10 Acres—\$140,000** NE of Sandpoint you'll find this 10 Acres. Perfect if you are looking for off-grid, remote and self-sustainable living! Plenty of trees and level ground to build a home, or a place to bring your family for recreation. Borders 1,000's of Acres of State Land.





## TRACT F SMUGGLERS LANE

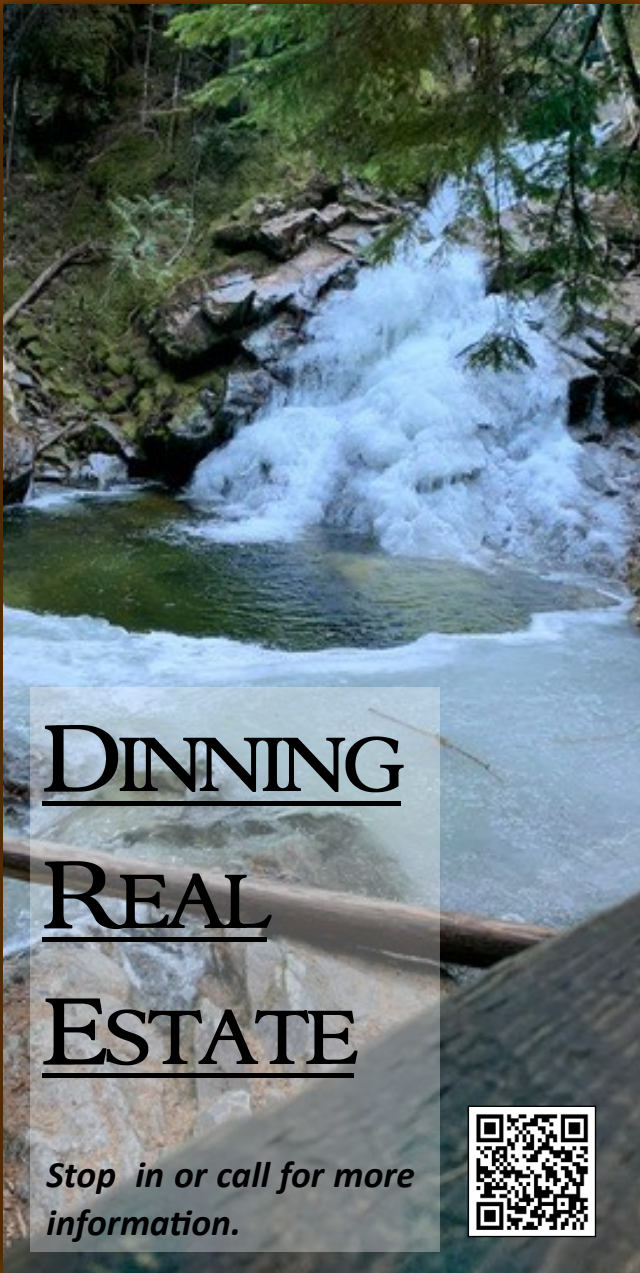
Private 20+ Acres on a private road with views for days no matter what the season!

**BUILD YOUR DREAM.**

**Underground Power & Phone.**

**1 mile from Canada, Public Boat Launch on the Kootenai River and Eckhart International Air Strip.**

**\$700,000.00**



# DINNING REAL ESTATE

*Stop in or call for more information.*



**FALCON RIDGE** is a 13-Tract Project up on a high plateau 15 minutes south of Bonners Ferry. There is a picturesque vista overlooking Deep Creek and Kootenai Valleys all the way to Canada! Nestled next to the Selkirk Mountains you'll have views of both the Cabinets and the Purcell Mountains .

**TRACT 6 IS 10.33 ACRES -\$650,000.00**

There is an excellent private gravel road that winds up to your dream home site. Across the road on the adjacent tract is a 25 gpm well and an opportunity to share it. Electricity is along the road.