

Dinning Real Estate 6422 Kootenai Street PO BOX 653 Bonners Ferry, ID 83805 Phone: (208) 267-7953 www.dinningrealestate.com

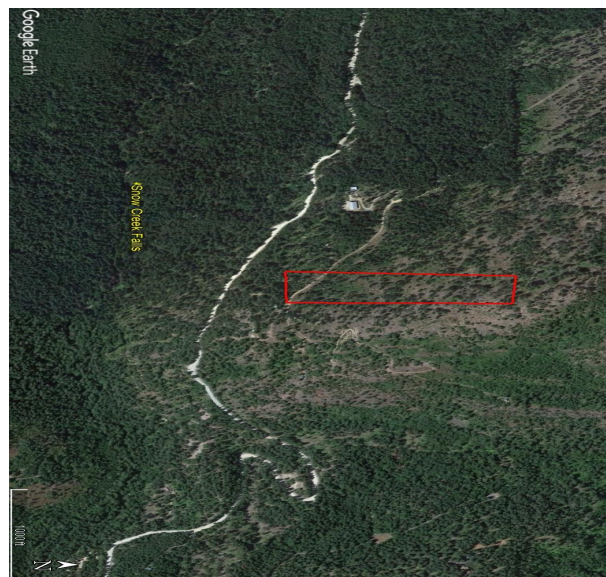
Snow Creek Tract 4

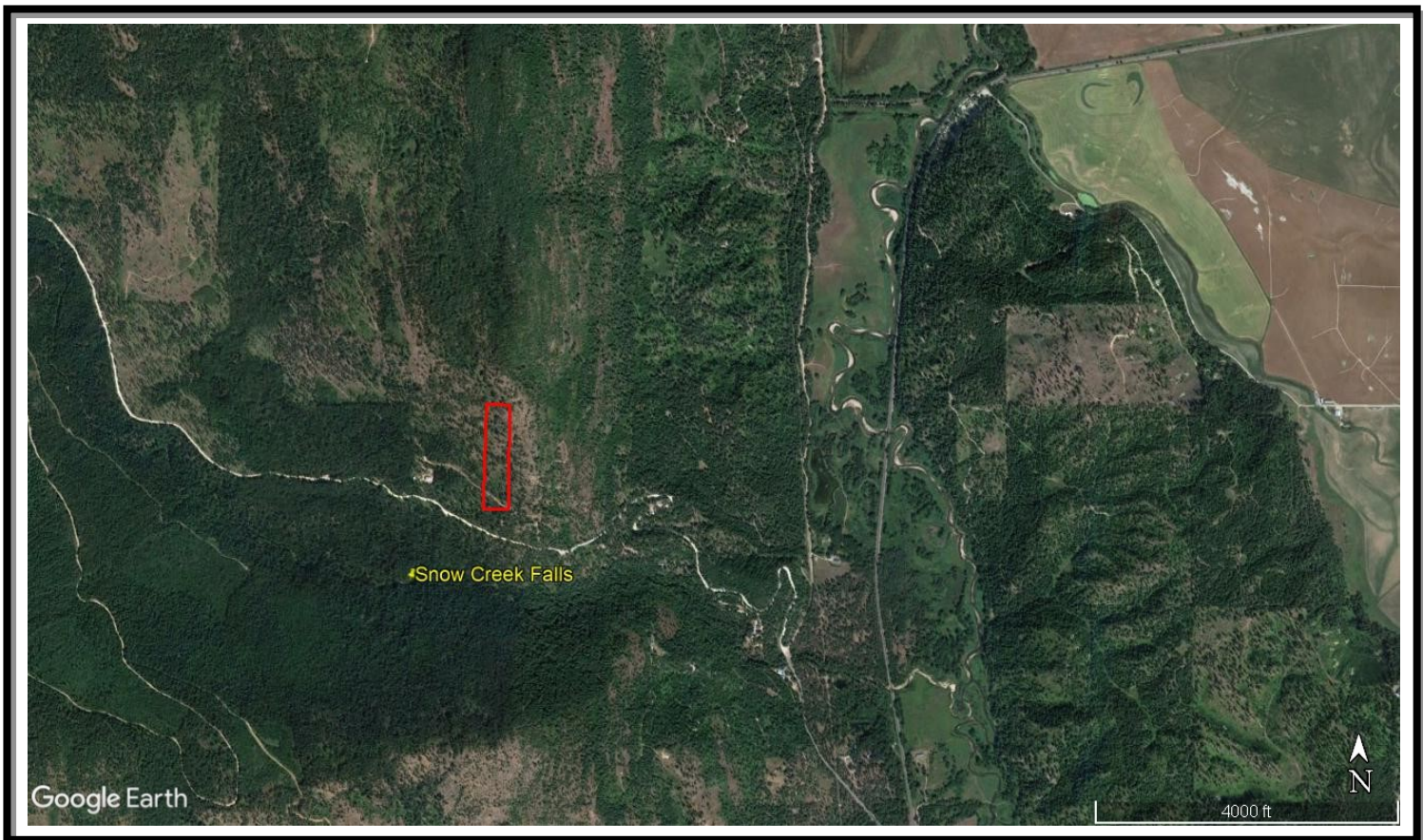
Off Grid 10 acres near Snow Creek in Boundary County. Borders National Forest and access to thousands of acres of public land in the Selkirk Mountains. Part of a small group of private properties accessed by a dead end road through National Forest. Hike from this land to the Snow Creek Falls for a spectacular view.

\$135,000

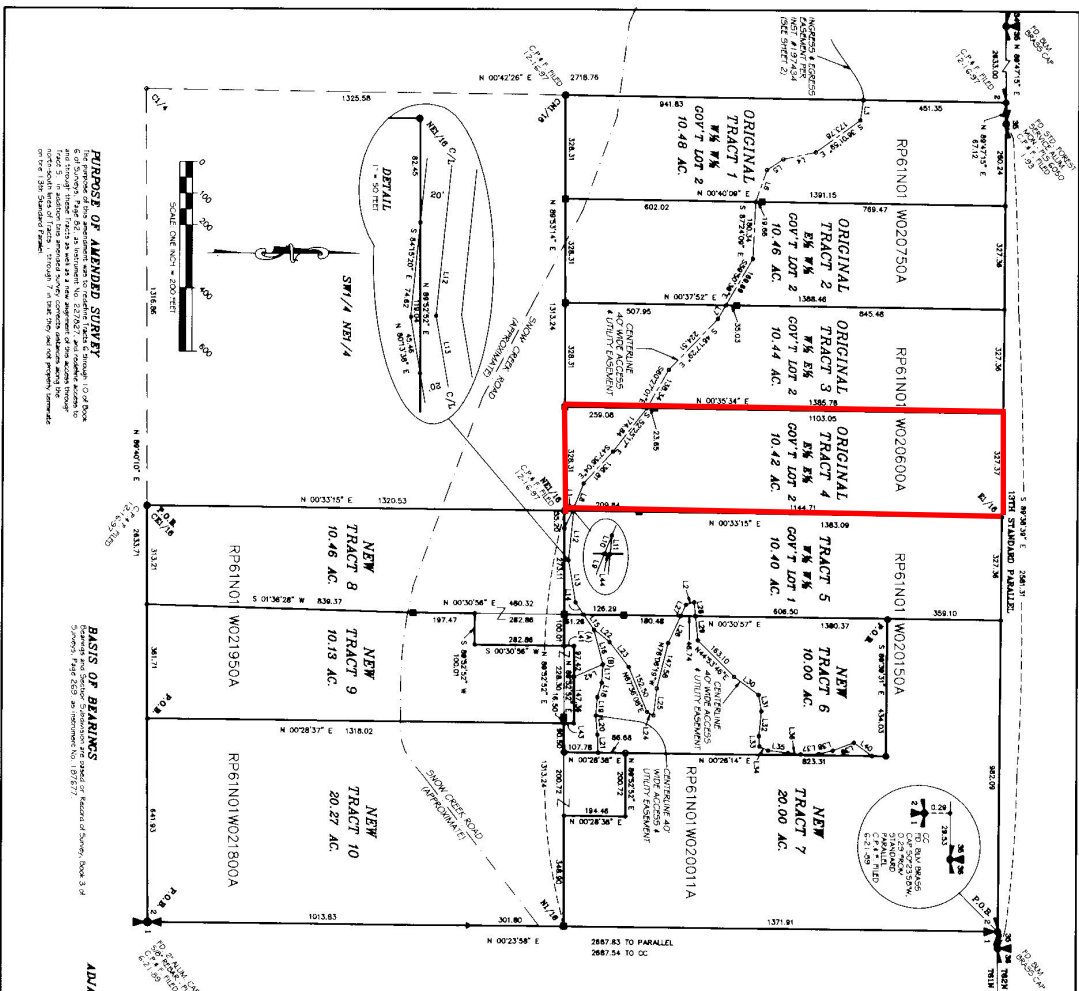
Directions: US 95 turn R on Deep Crk Loop (at Mirror Lk Golf Course) go 3 mi & turn R on Lions Den Rd, go 2.1 mi & turn L on Snow Crk Rd, go approx 1.2 mi to TR 10. Go 0.7 mi & turn R on access rd. Go .25 mi to private rd on R, go thru gate.

Must be accompanied by an agent





**AMENDED
RECORD OF SURVEY**
IN
**GOV'T LOTS 1 AND 2 AND SE1/4 NE1/4
SECTION 2, T61N, R17W, B.M.
BOUNDARY COUNTY, IDAHO**
FOR
BACK COUNTRY DEVELOPMENT CORP.
SHEET 1 OF 2



PURPOSE OF AMENDED SURVEY
This Amended Record of Survey is being prepared to show the location of the boundaries of the original and new tracts as shown on the attached plat. The original and new tracts are shown on the attached plat. The original and new tracts are shown on the attached plat. The original and new tracts are shown on the attached plat.

BASIS OF BEARINGS
Bearings and distances were obtained from the State of Idaho, Bureau of Survey and Mapping, Boise, Idaho. The bearings and distances were obtained from the State of Idaho, Bureau of Survey and Mapping, Boise, Idaho.

ADJACENT SURVEYS OF RECORD
None shown.

LINE TABLE

LINE	BEARING	DISTANCE
1	N 89°17'00" E	25.81
2	N 89°17'00" E	25.81
3	S 81°46'28" E	64.51
4	S 81°46'28" E	64.51
5	S 79°02'42" E	61.30
6	S 79°02'42" E	101.20
7	S 89°02'42" E	70.80
8	S 89°02'42" E	62.20
9	S 89°02'42" E	62.20
10	S 89°02'42" E	62.20
11	S 89°02'42" E	116.50
12	S 89°02'42" E	108.50
13	N 89°17'00" E	148.51
14	N 89°17'00" E	148.51
15	N 89°17'00" E	116.50
16	N 89°17'00" E	116.50
17	N 89°17'00" E	64.51
18	N 89°17'00" E	64.51
19	N 89°17'00" E	64.51
20	N 89°17'00" E	64.51
21	N 89°17'00" E	64.51
22	N 89°17'00" E	64.51

LINE	BEARING	DISTANCE
123	N 89°17'00" E	25.81
124	N 89°17'00" E	25.81
125	N 89°17'00" E	64.51
126	N 89°17'00" E	64.51
127	N 89°17'00" E	61.30
128	N 89°17'00" E	101.20
129	N 89°17'00" E	70.80
130	N 89°17'00" E	62.20
131	N 89°17'00" E	62.20
132	N 89°17'00" E	62.20
133	N 89°17'00" E	116.50
134	N 89°17'00" E	108.50
135	N 89°17'00" E	148.51
136	N 89°17'00" E	148.51
137	N 89°17'00" E	116.50
138	N 89°17'00" E	116.50
139	N 89°17'00" E	64.51
140	N 89°17'00" E	64.51
141	N 89°17'00" E	64.51
142	N 89°17'00" E	64.51
143	N 89°17'00" E	64.51
144	N 89°17'00" E	64.51

SURVEYOR'S CERTIFICATION
I, **Clayton Peterson**, Idaho Land Surveyor No. 7877, do hereby certify that the foregoing is a true and correct copy of the original and amended record of survey as shown on the attached plat. The original and amended record of survey as shown on the attached plat. The original and amended record of survey as shown on the attached plat.

COUNTY RECORDER
This Record of Survey was filed for record in the office of the Recorder of Boundary County, Idaho, on the 15th day of July, 2006. The original and amended record of survey as shown on the attached plat. The original and amended record of survey as shown on the attached plat.

Clayton Peterson
Idaho Land Surveyor
Boundary County, Idaho

J.R.S. SURVEYING, INC.
PO BOX 3009 - 67th MAIN
BONNERS FERRY, ID 83805
(208) 287-7555

AMENDED RECORD OF SURVEY
FILED FOR RECORD IN 2006 JUL 15 10:14 AM
BOUNDARY COUNTY, IDAHO