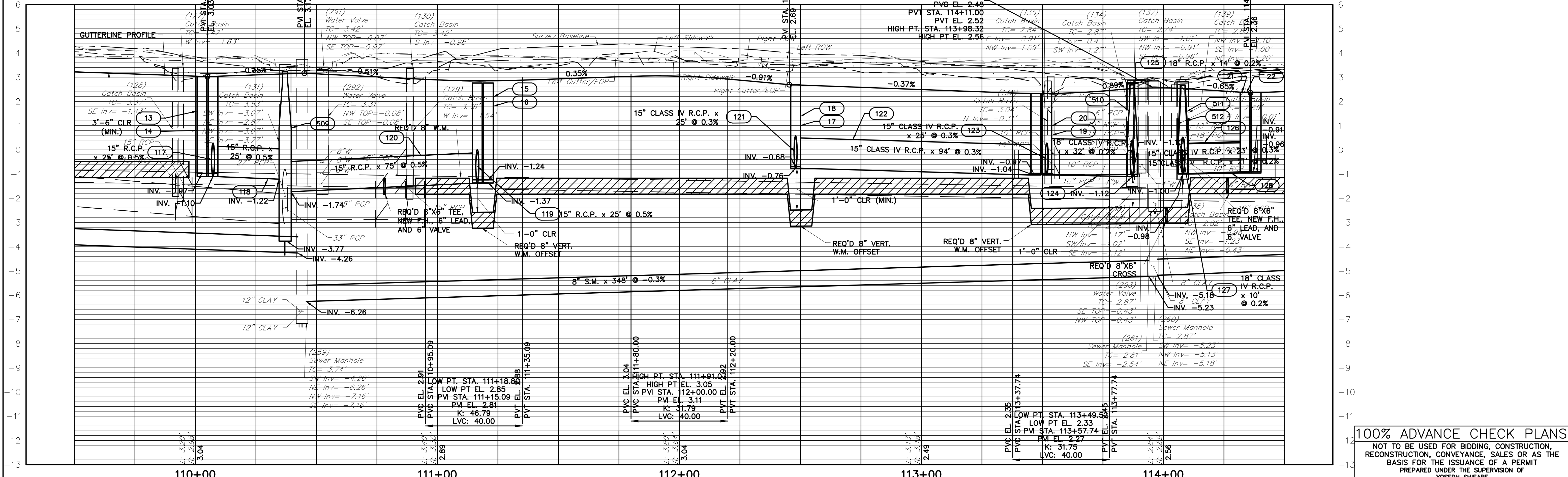
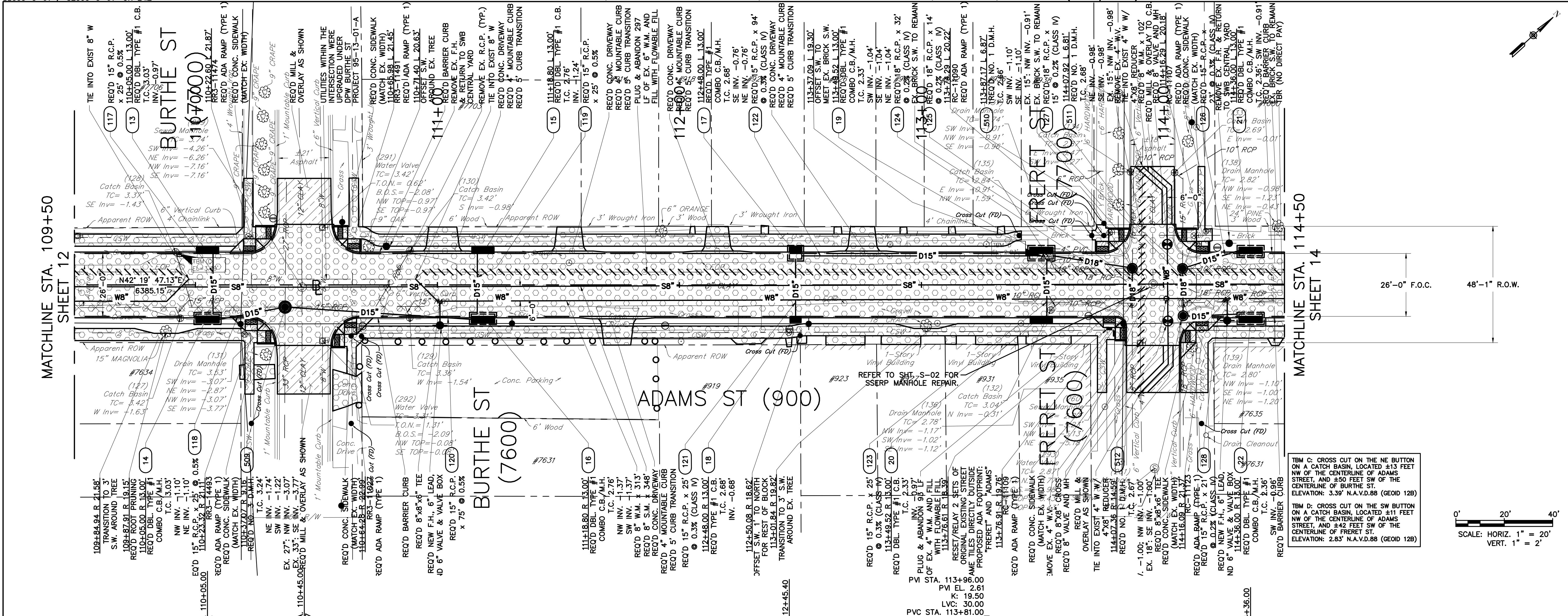
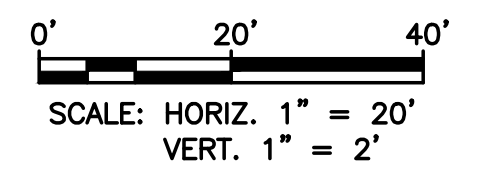


MATCHLINE STA. 109+50
SHEET 12

MATCHLINE STA. 114+50
SHEET 14



100% ADVANCE CHECK PLANS
 NOT TO BE USED FOR BIDDING, CONSTRUCTION, RECONSTRUCTION, CONVEYANCE, SALES OR AS THE BASIS FOR THE ISSUANCE OF A PERMIT
 PREPARED UNDER THE SUPERVISION OF
 YOSEPH SHIFARE
 LOUISIANA P.E. LIC. NO. 42747
 PIVOTAL ENGINEERING, LLC



SHEET NUMBER		13	
DESIGNED	CHECKED	DATE	SHEET
Y.S.	Y.S.	07/15/2022	13
PIVOTAL ENGINEERING, LLC 1515 PONDRAV ST., STE. 1875, NEW ORLEANS, LA 70112		CITY OF NEW ORLEANS, LOUISIANA DEPARTMENT OF PUBLIC WORKS PROJECT NO. RR034 RR216 - EAST CARROLLTON GROUP B & C	
PIVOTAL ENGINEERING, LLC A Full Service MEP, Civil and Environmental Firm		PLAN & PROFILE - STA. 109+50 TO 114+50	
NO.	DATE	REVISION DESCRIPTION	BY

