

The Juniper

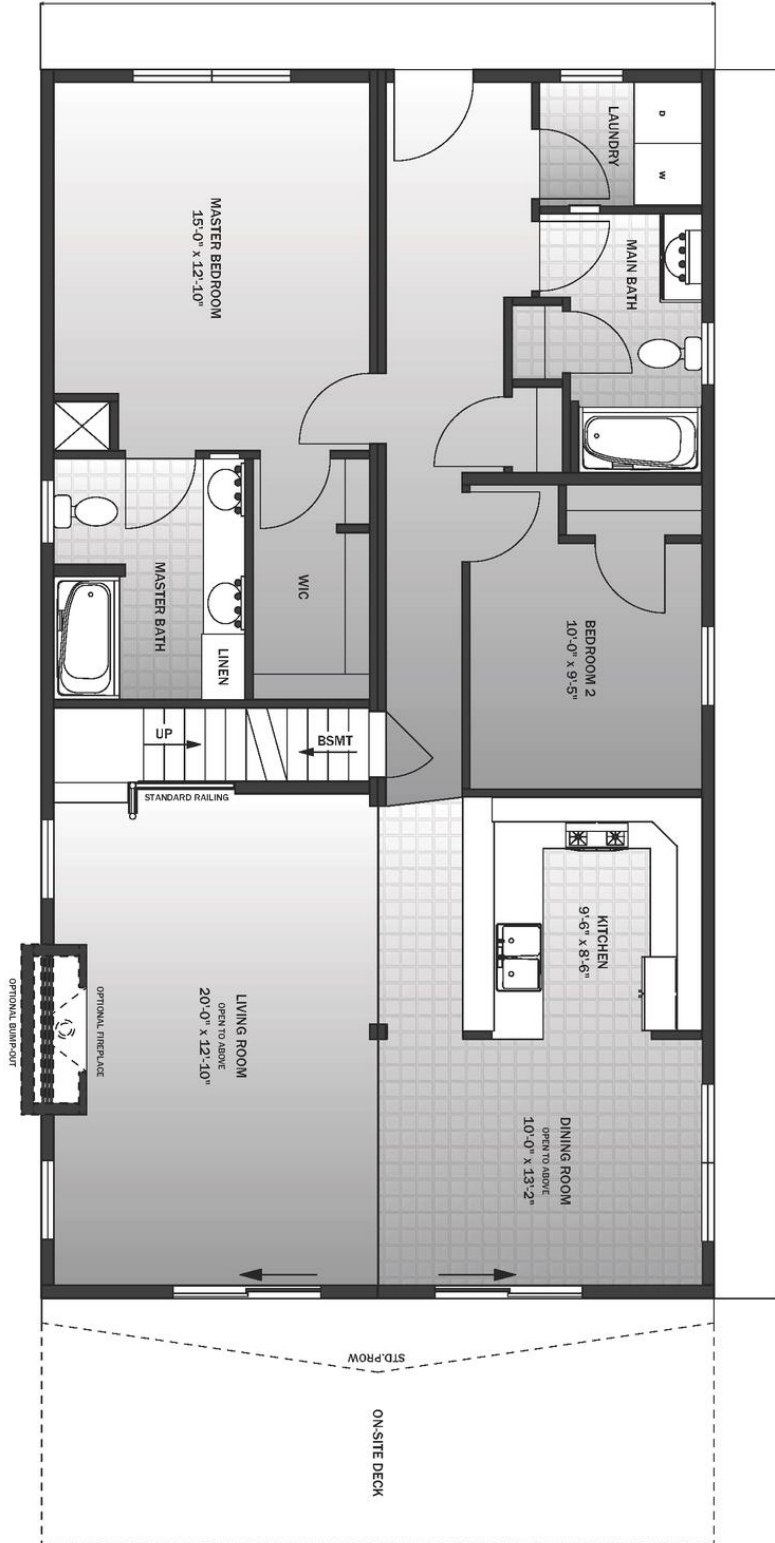


Designed to accommodate both a front entrance and a rear view (shown), The Juniper boasts two bedrooms, each with private bathrooms, in its 1,371 square feet of finished living space. Upstairs, the plan accommodates an additional bedroom and bathroom.

2 Bedrooms | 2 Baths | 1,371 sq. ft.
Available Second Floor (460 sq. ft.)

First Floor

27'-5"



50'-0"

Second Floor - Optional

