

The Nordmann



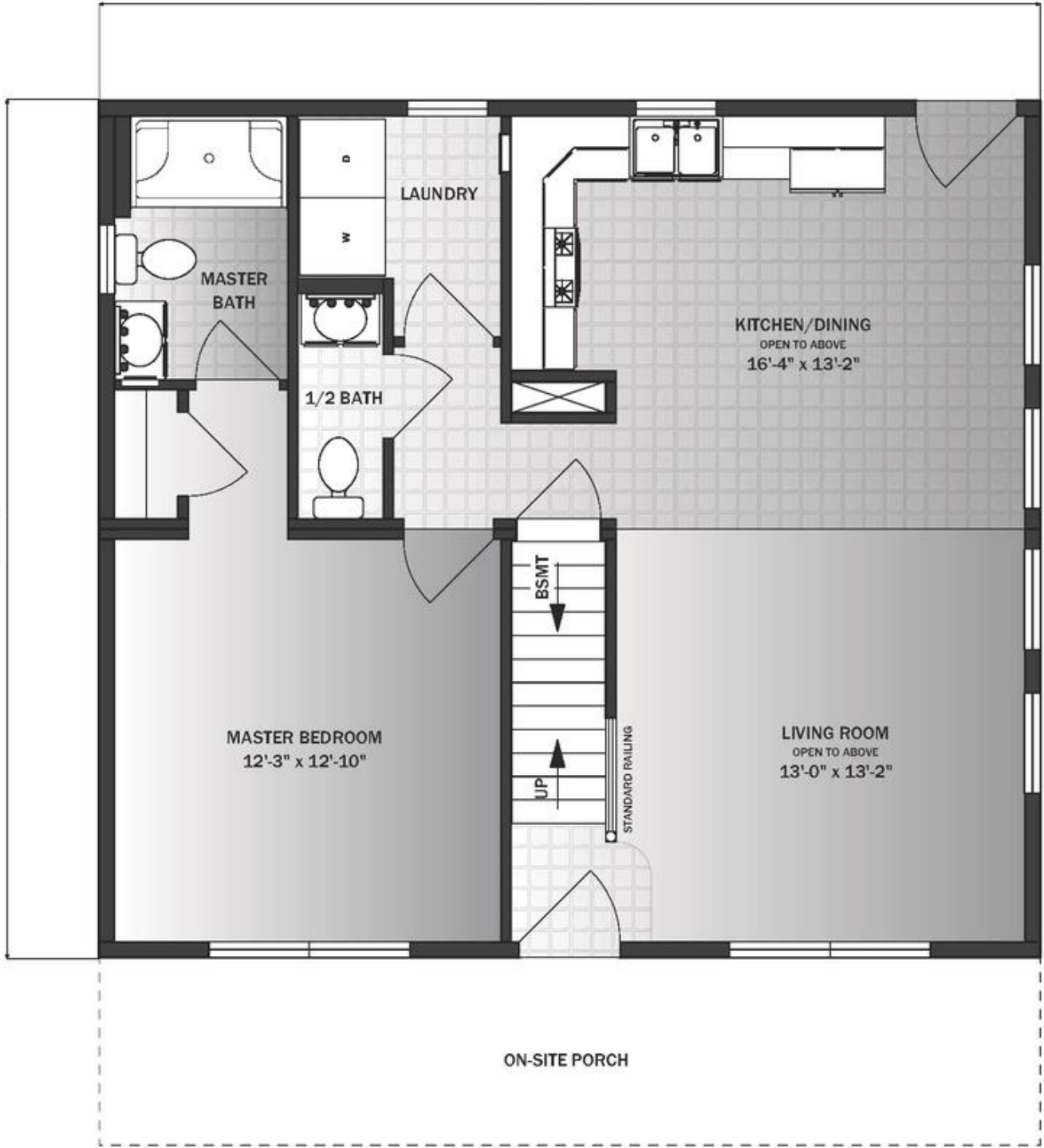
The perfect cabin for your waterfront retreat, the Nordmann features a vaulted living room and kitchen/dining area along with a bedroom and one full and one half bathroom. The site-finished second floor is shown with an additional bedroom and bathroom to the left of a stair landing that overlooks the living and dining areas. Shown here with optional western red cedar lap siding, two dormers and a site-built, full-length porch, the Nordmann packs everything you need into a small footprint.

1 Bedrooms | 1.5 Baths | 823 sq. ft.
Available Second Floor (260 sq. ft.)

First Floor

30'-0"

27'-5"



ON-SITE PORCH

Second Floor - Optional

